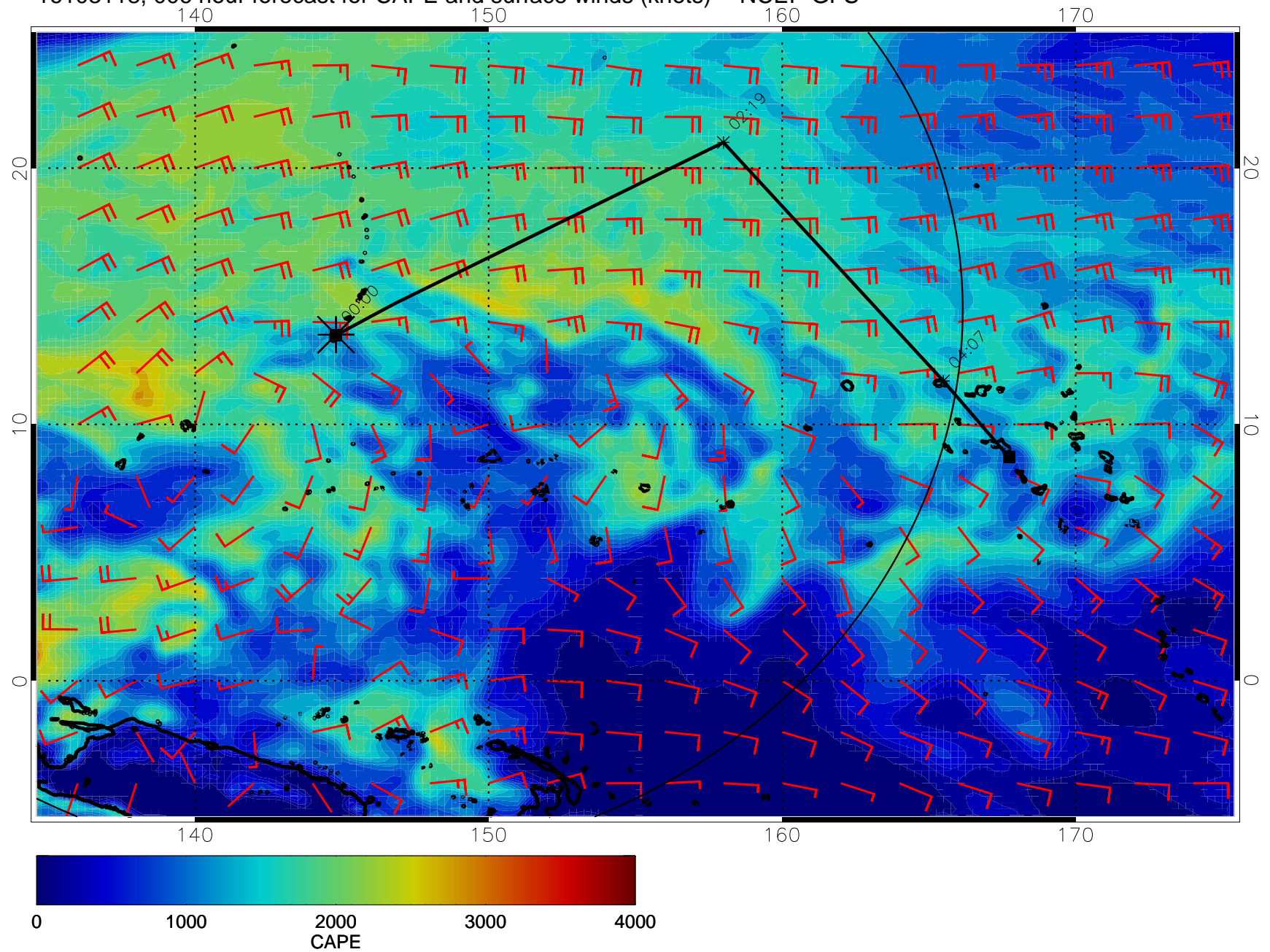
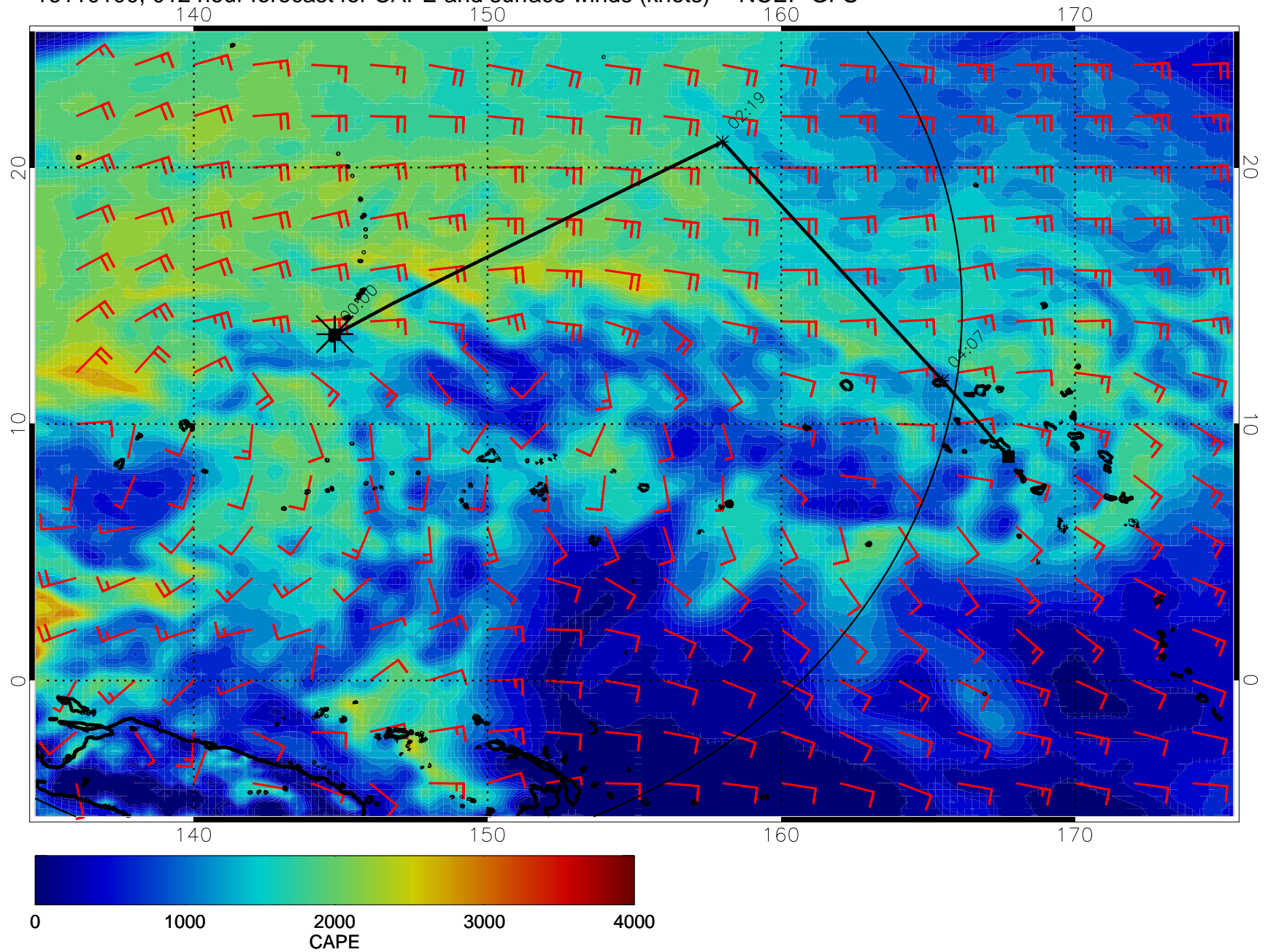


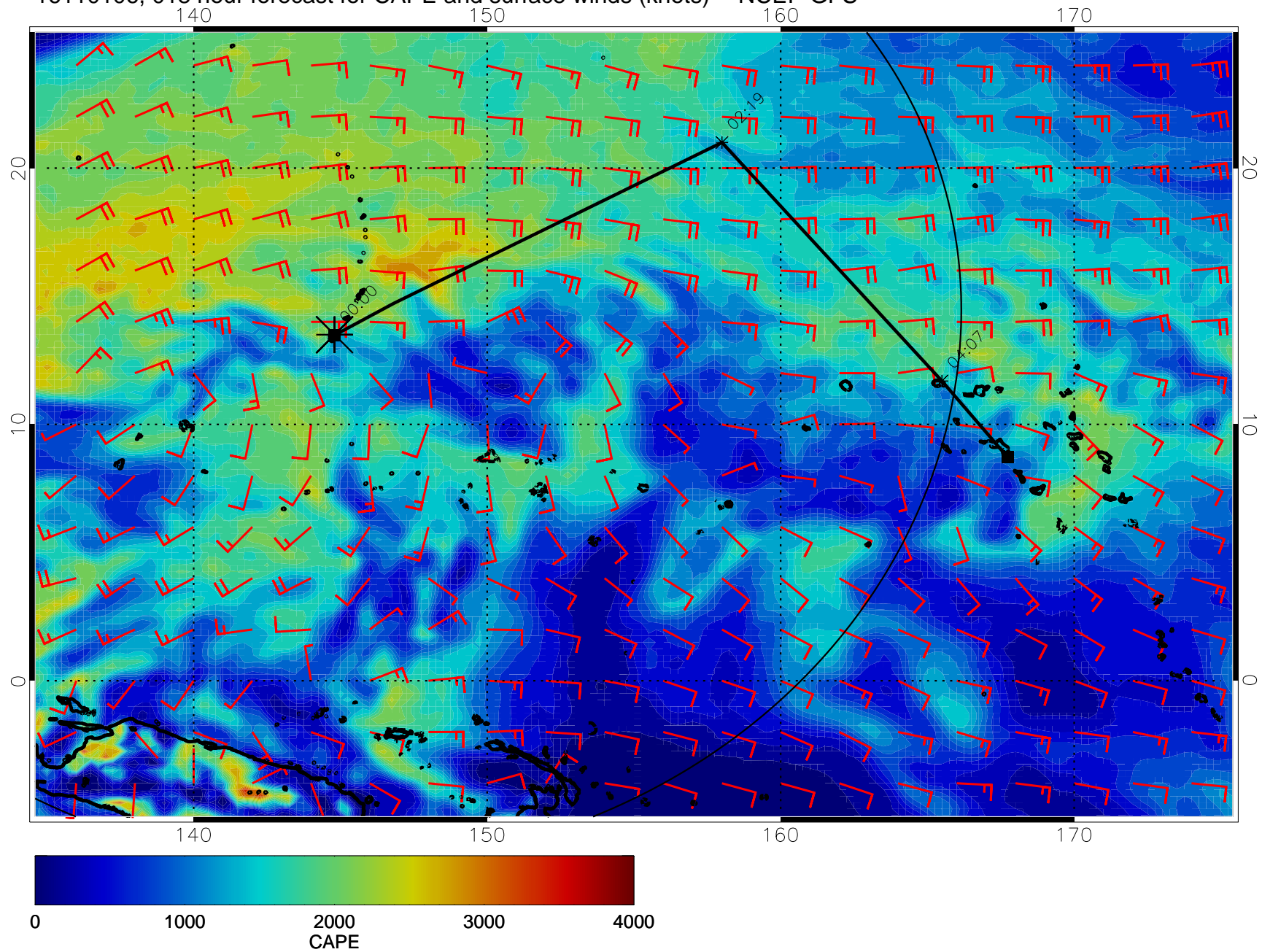
16103118, 006 hour forecast for CAPE and surface winds (knots) -- NCEP GFS



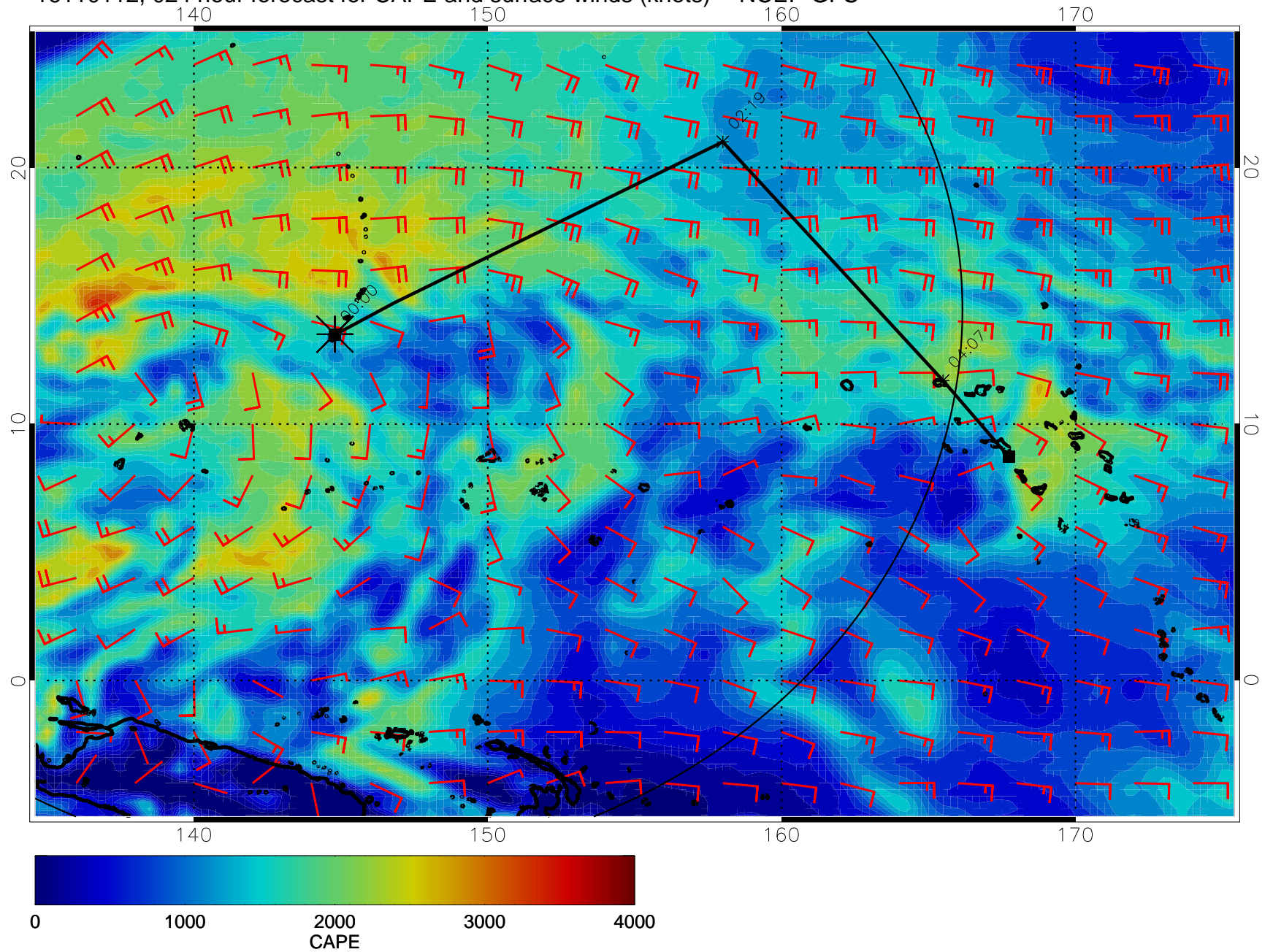
16110100, 012 hour forecast for CAPE and surface winds (knots) -- NCEP GFS



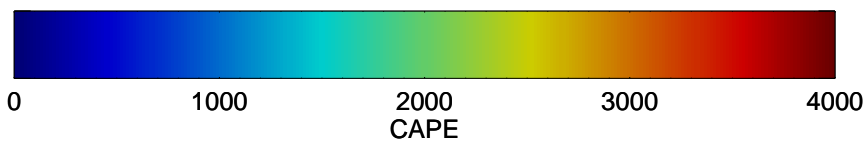
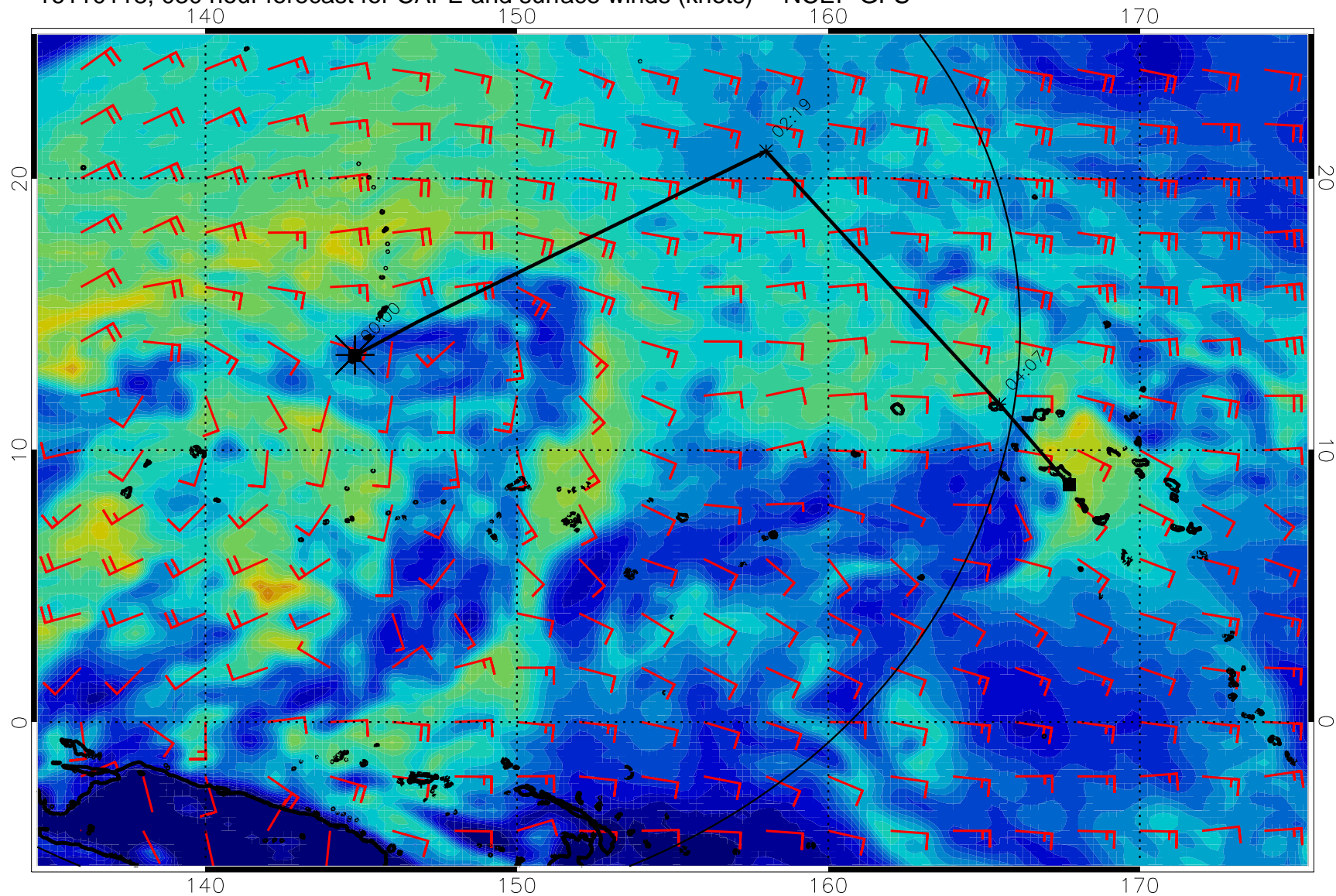
16110106, 018 hour forecast for CAPE and surface winds (knots) -- NCEP GFS



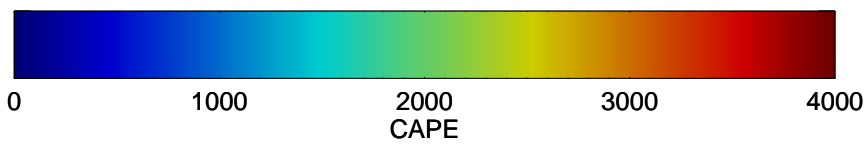
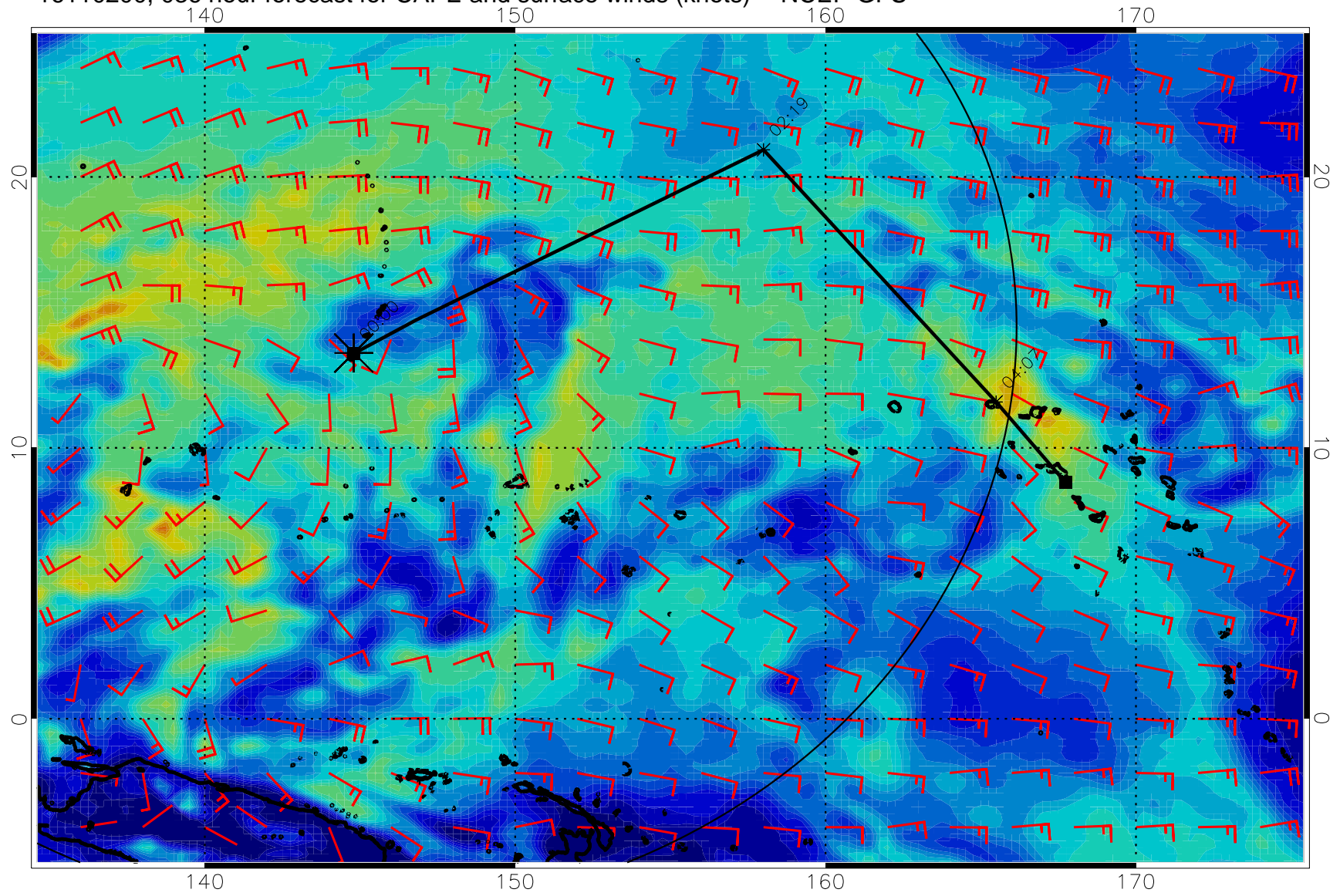
16110112, 024 hour forecast for CAPE and surface winds (knots) -- NCEP GFS



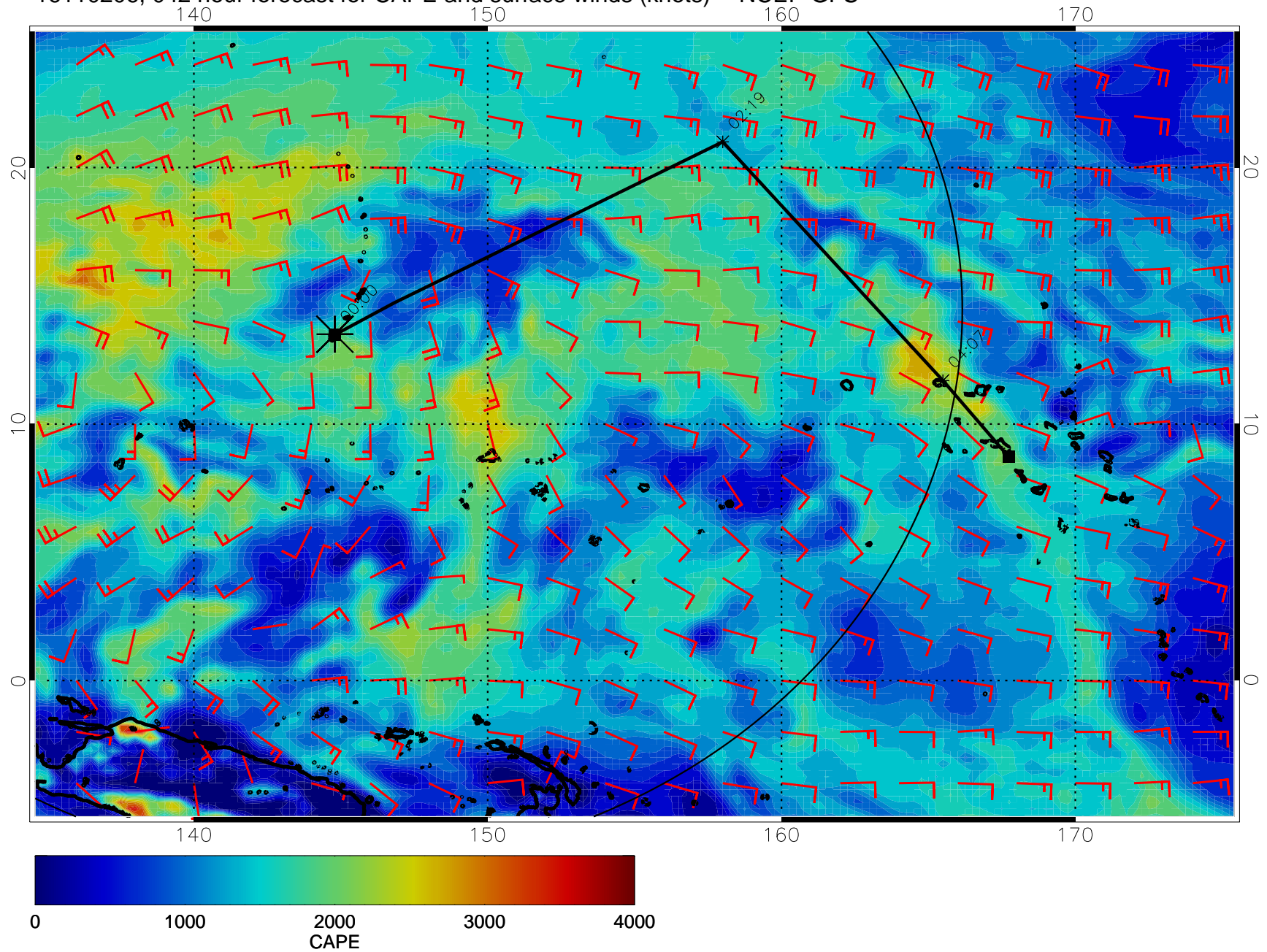
16110118, 0300 hour forecast for CAPE and surface winds (knots) -- NCEP GFS



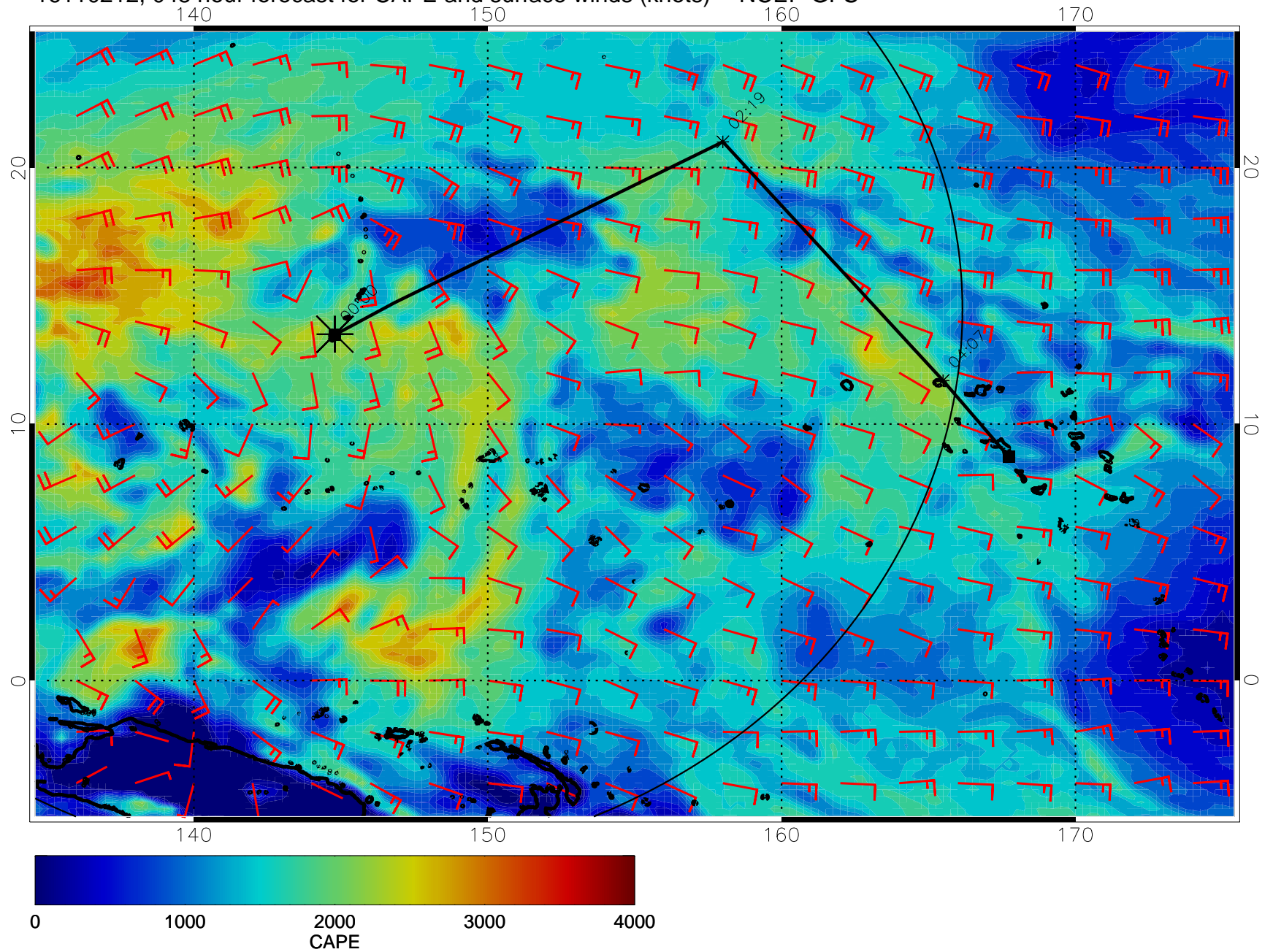
16110200, 036 hour forecast for CAPE and surface winds (knots) -- NCEP GFS



16110206, 042 hour forecast for CAPE and surface winds (knots) -- NCEP GFS

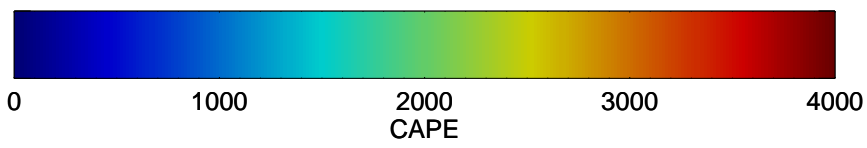
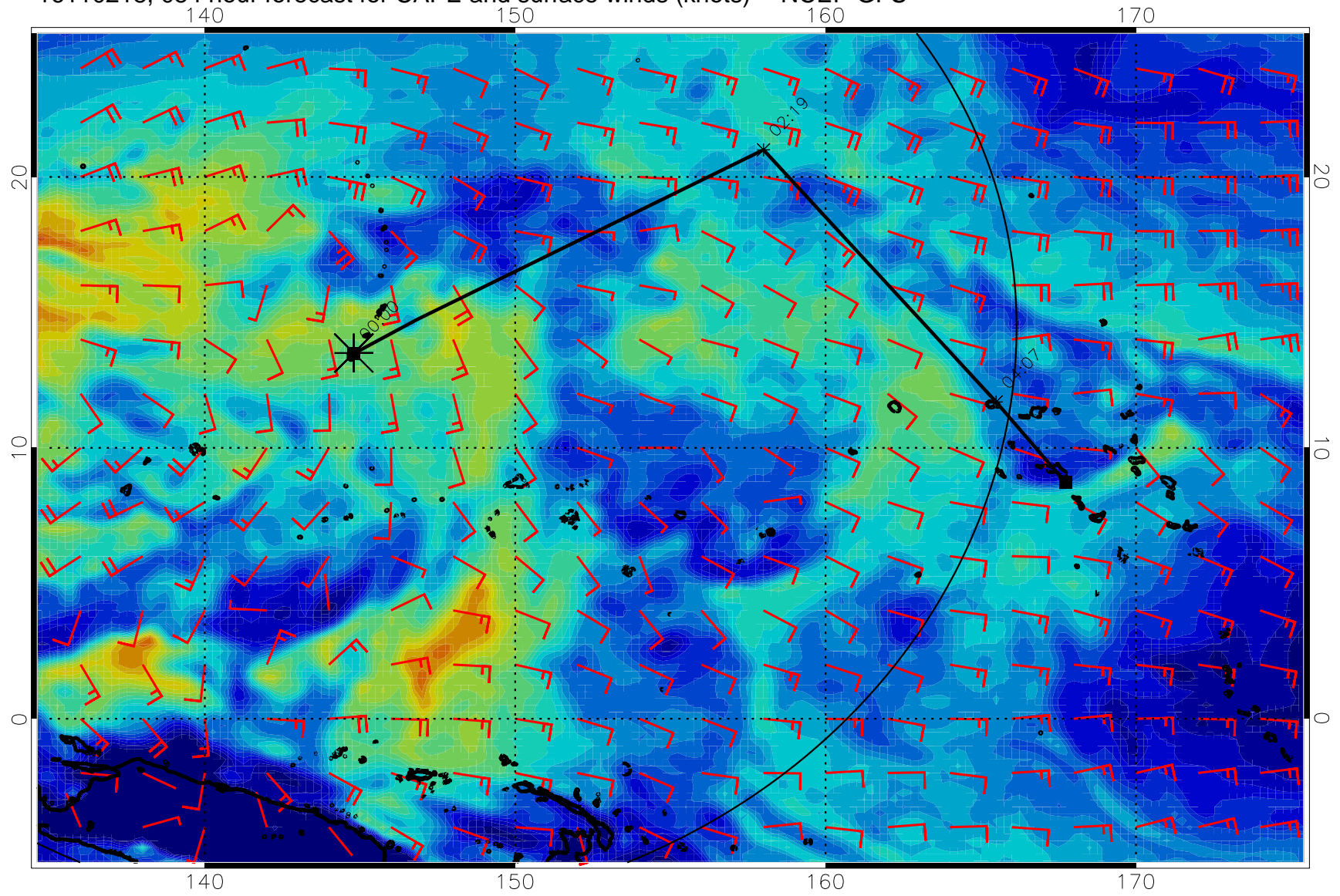


16110212, 048 hour forecast for CAPE and surface winds (knots) -- NCEP GFS

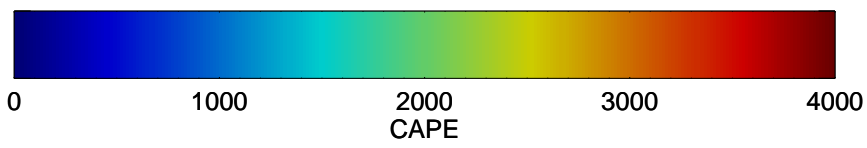
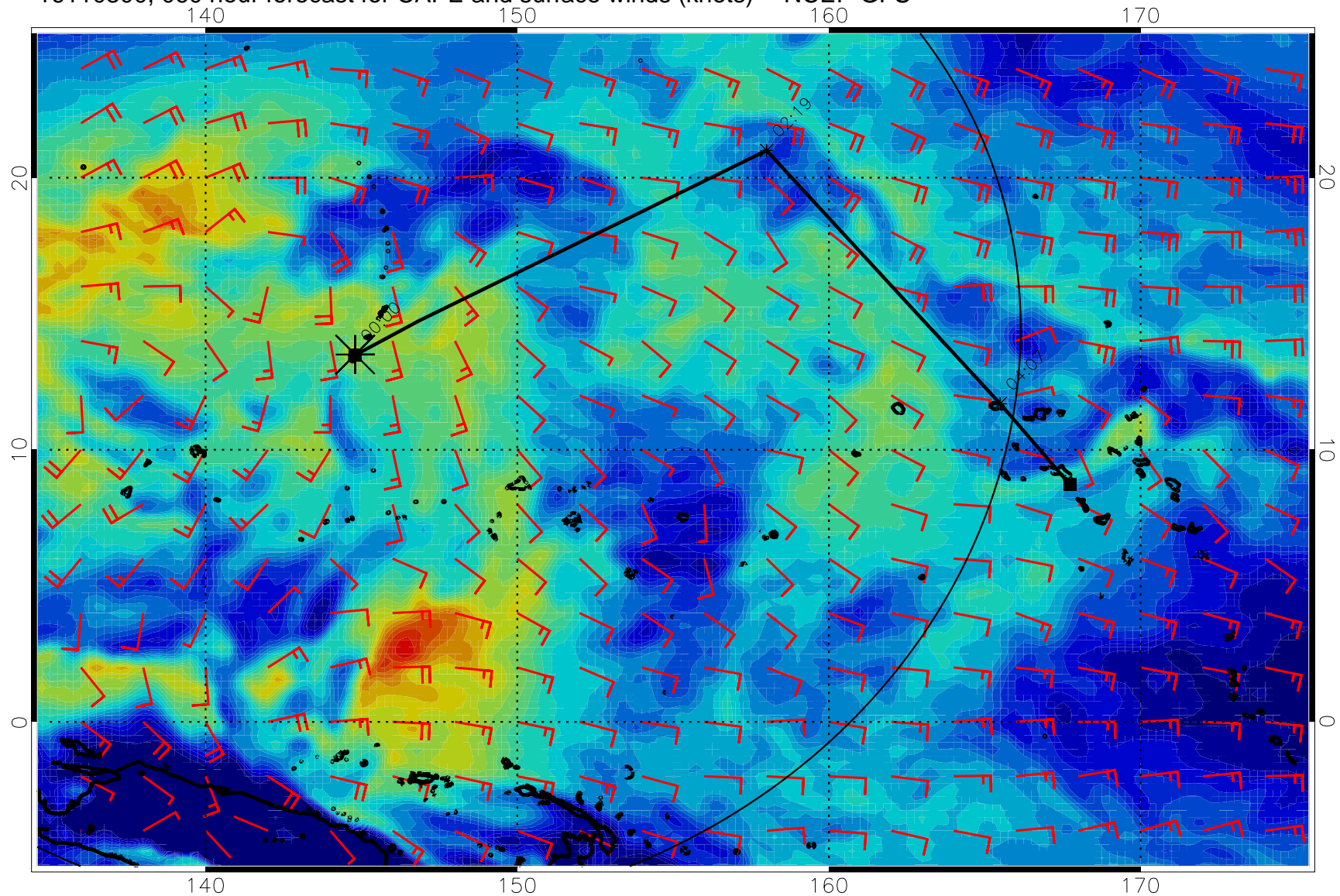




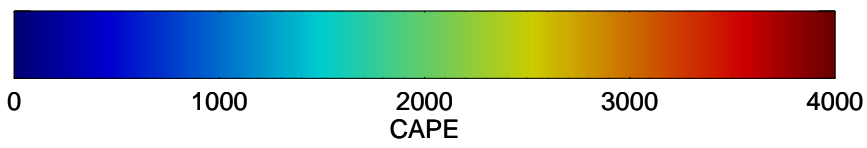
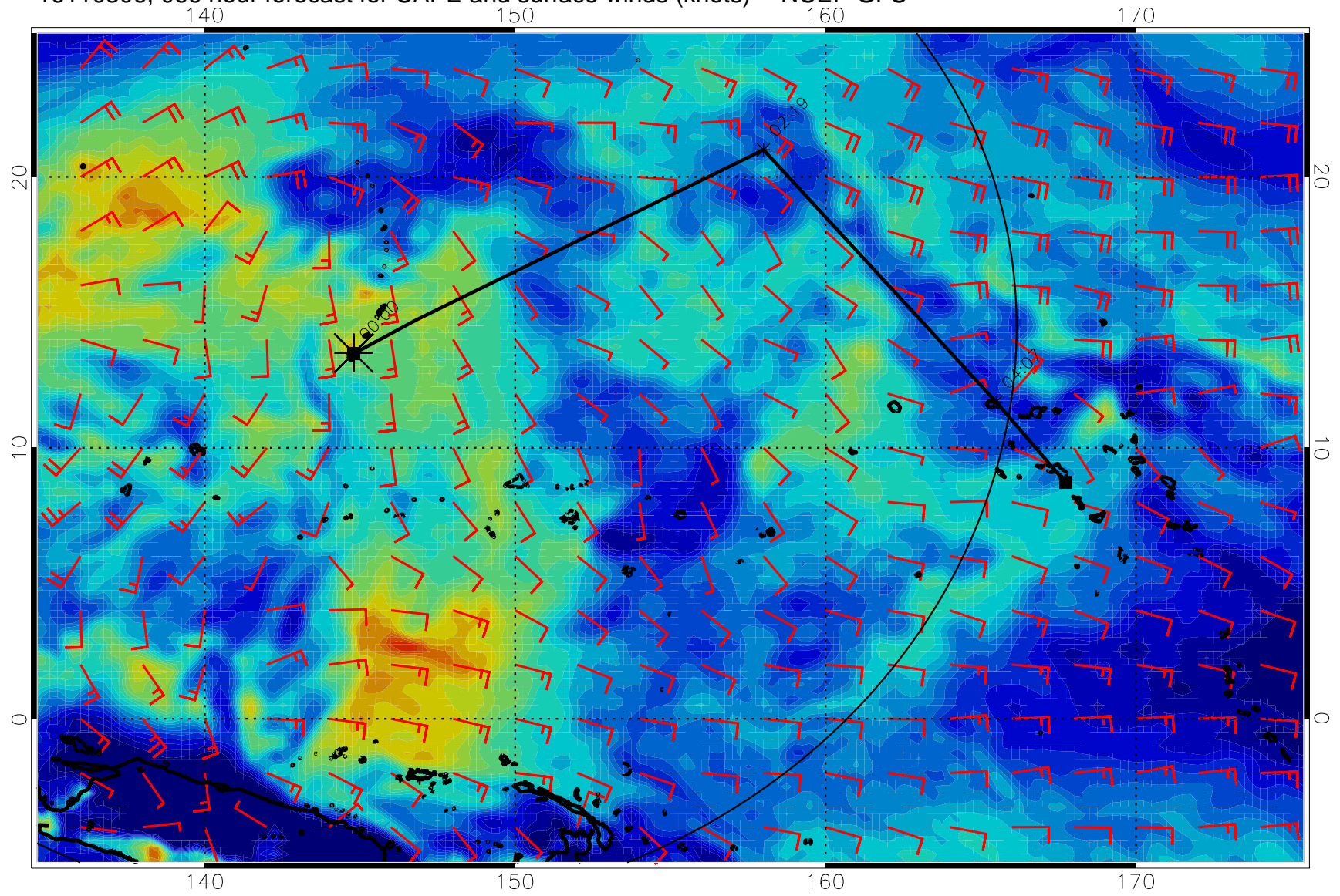
16110218, 054 hour forecast for CAPE and surface winds (knots) -- NCEP GFS



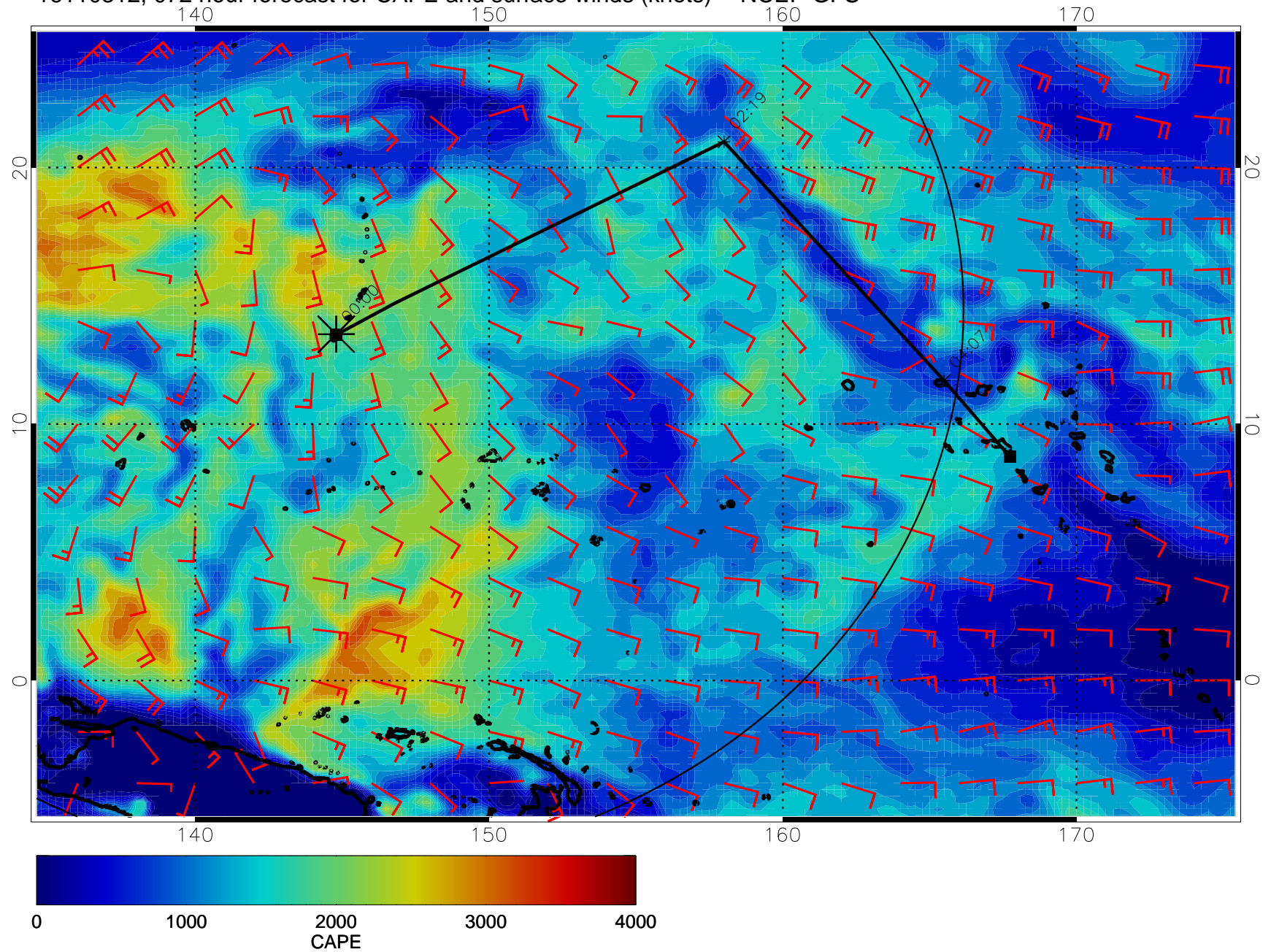
16110300, 060 hour forecast for CAPE and surface winds (knots) -- NCEP GFS



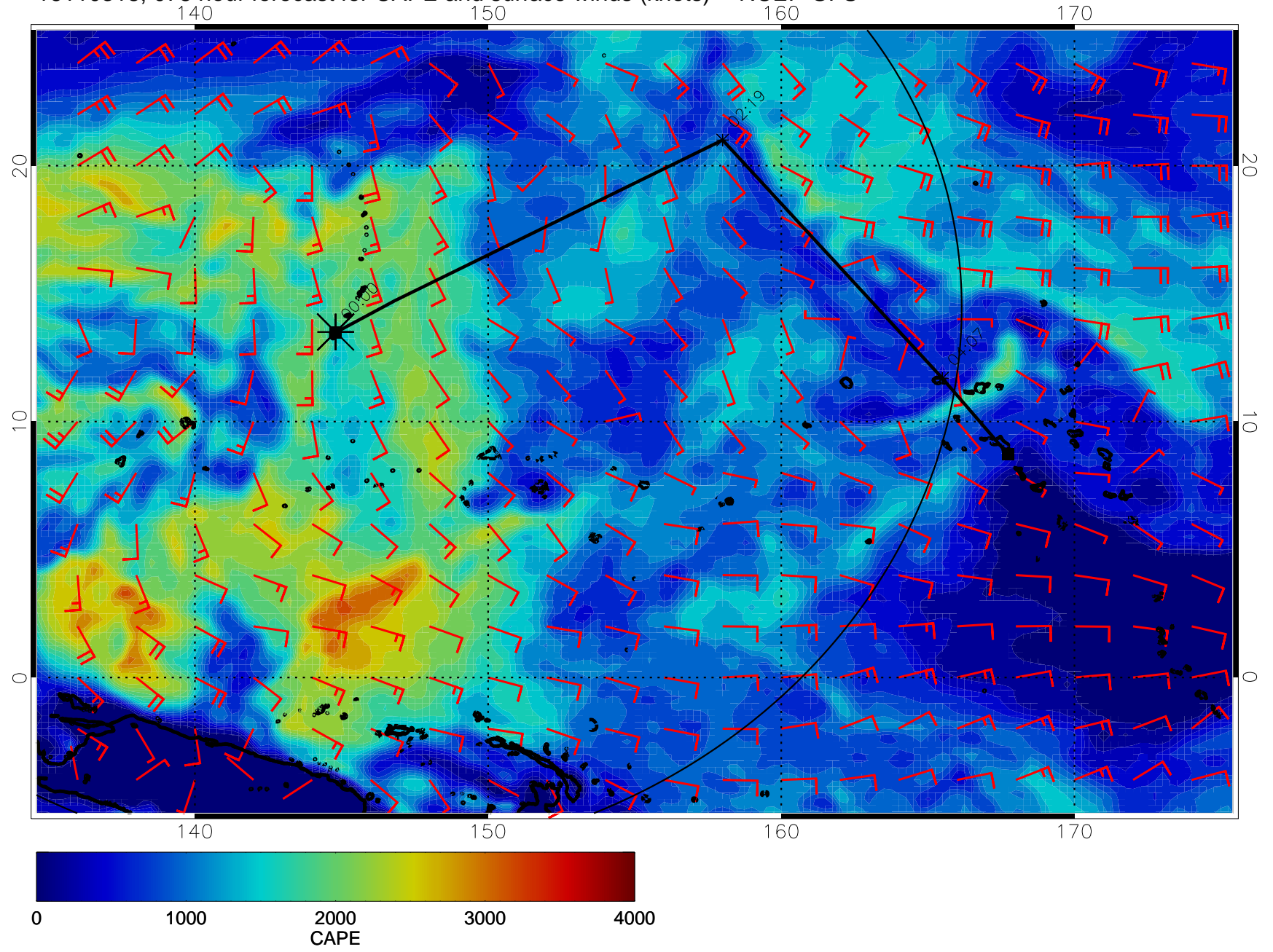
16110306, 066 hour forecast for CAPE and surface winds (knots) -- NCEP GFS



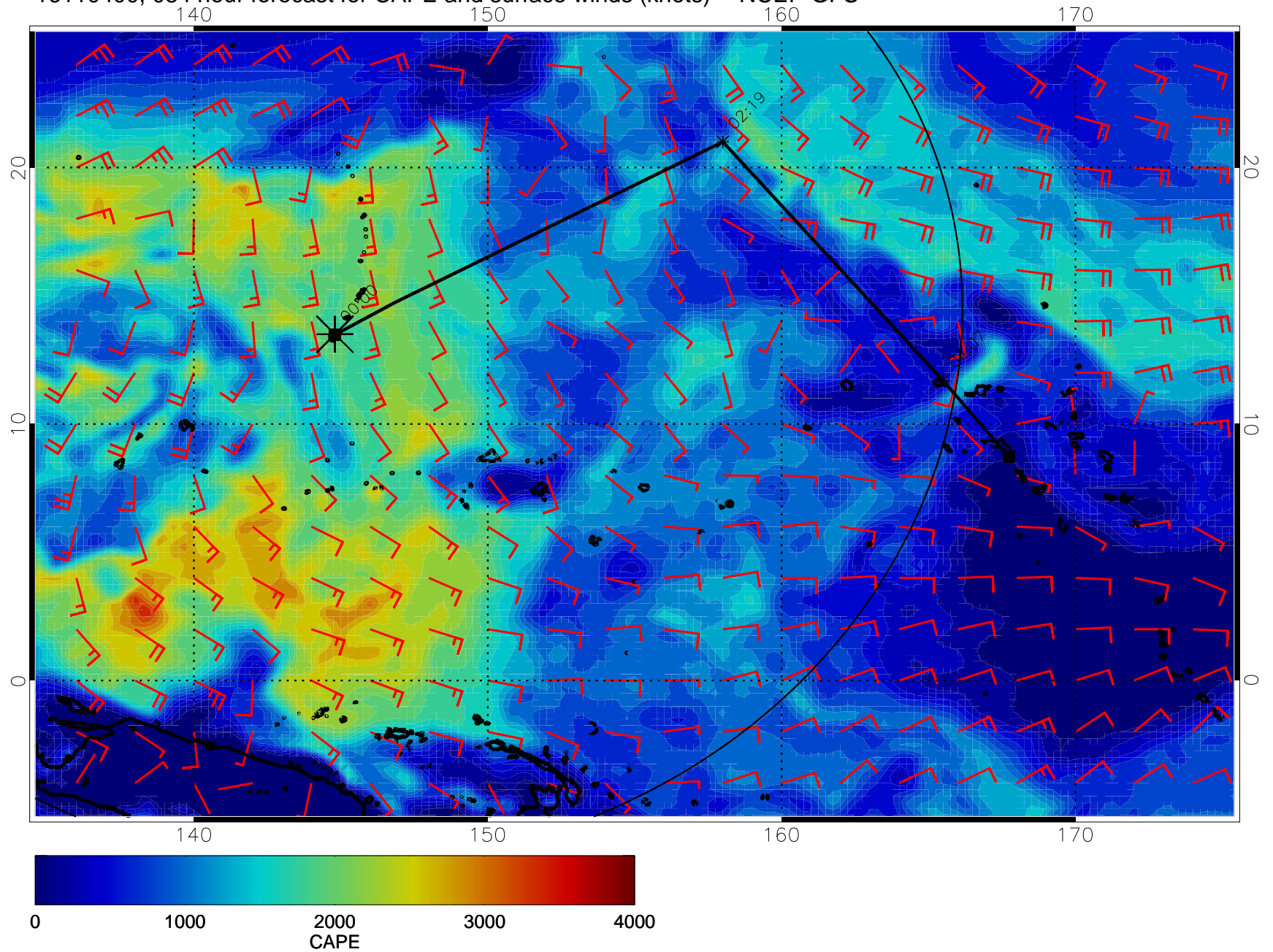
16110312, 072 hour forecast for CAPE and surface winds (knots) -- NCEP GFS



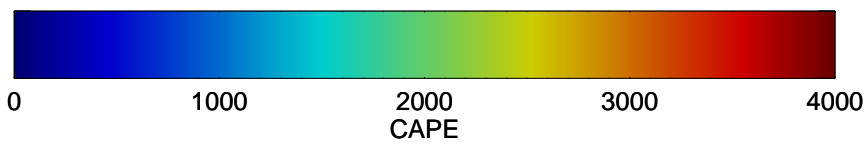
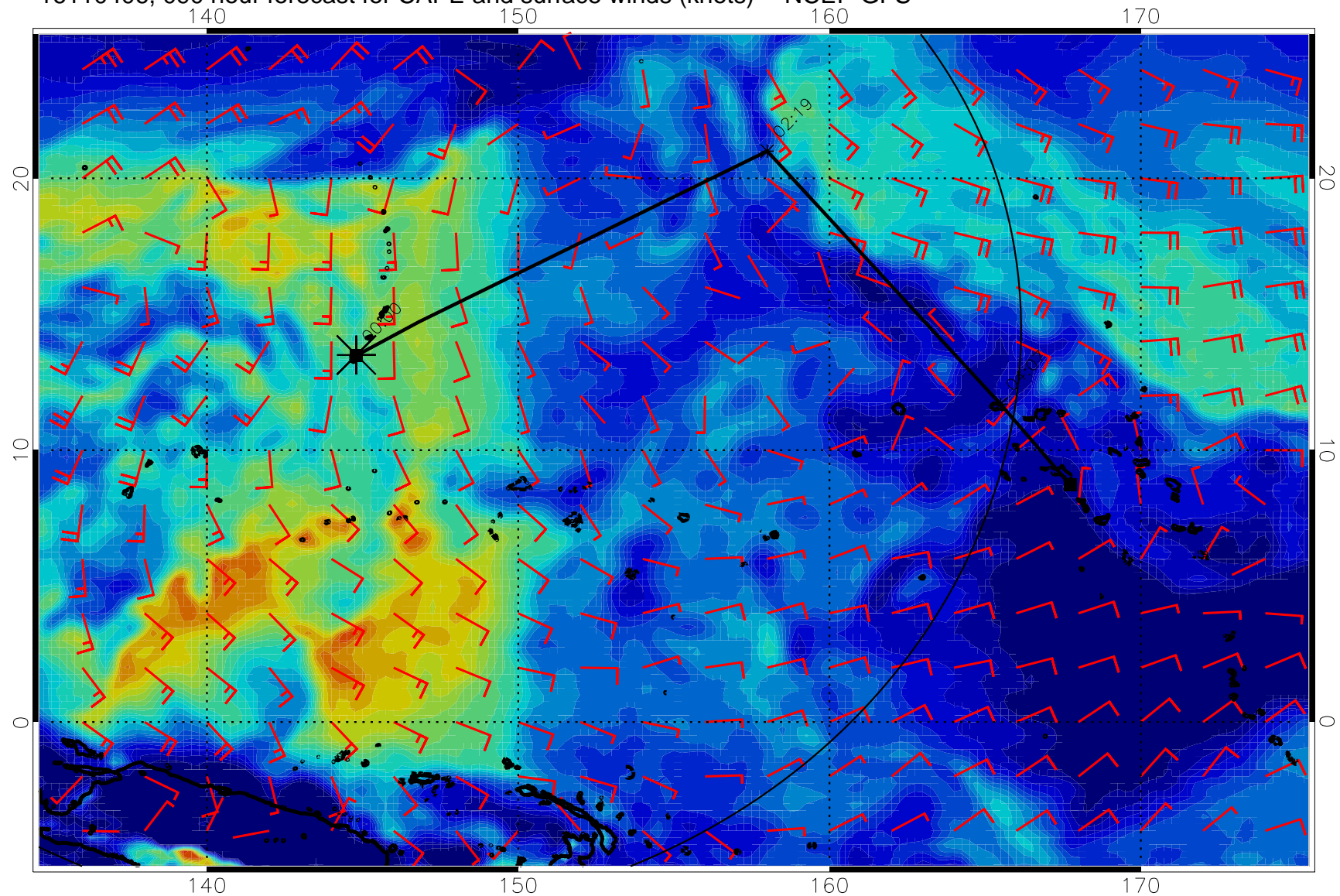
16110318, 078 hour forecast for CAPE and surface winds (knots) -- NCEP GFS



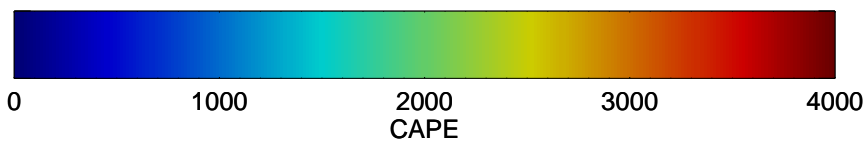
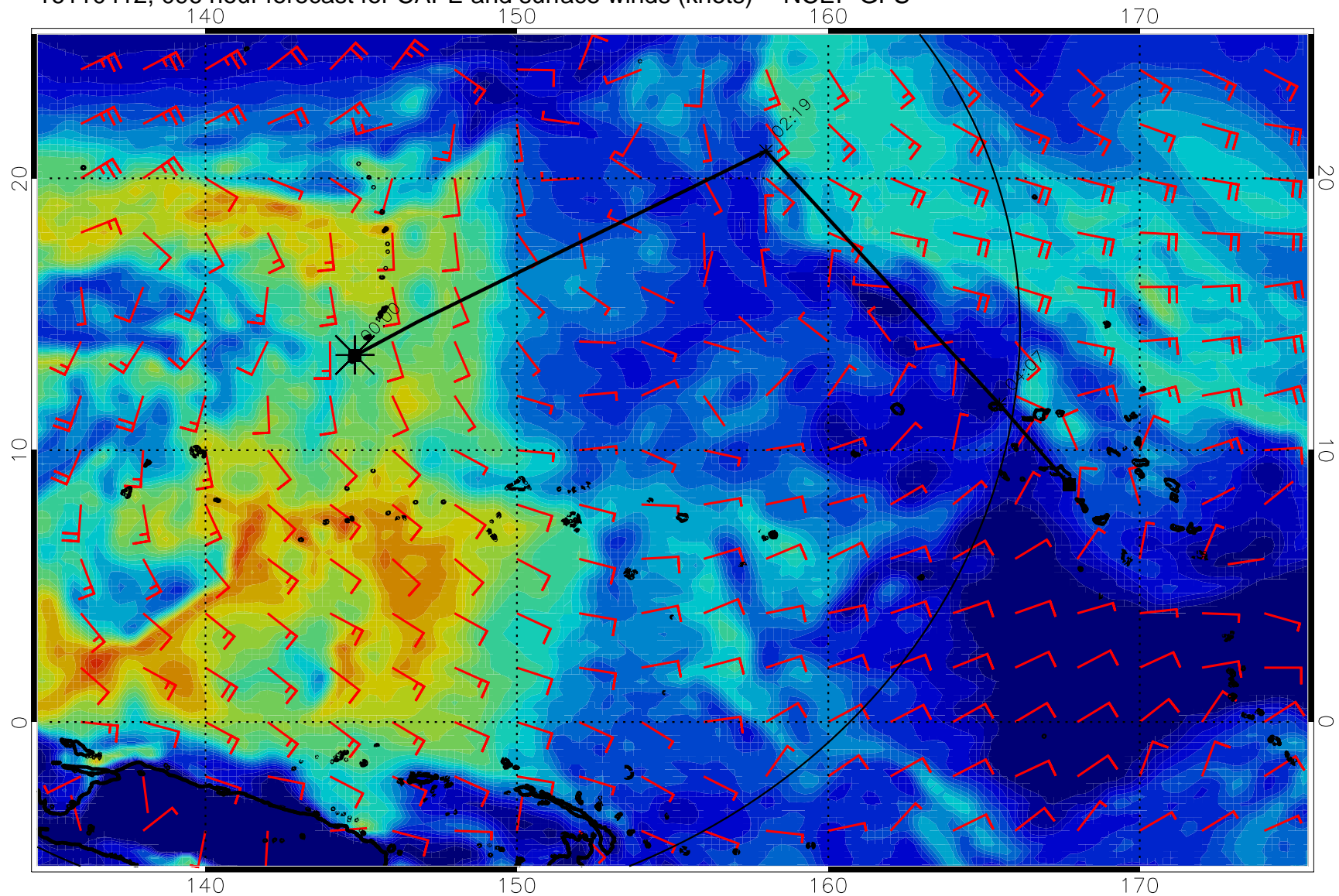
16110400, 084 hour forecast for CAPE and surface winds (knots) -- NCEP GFS



16110406, 090 hour forecast for CAPE and surface winds (knots) -- NCEP GFS

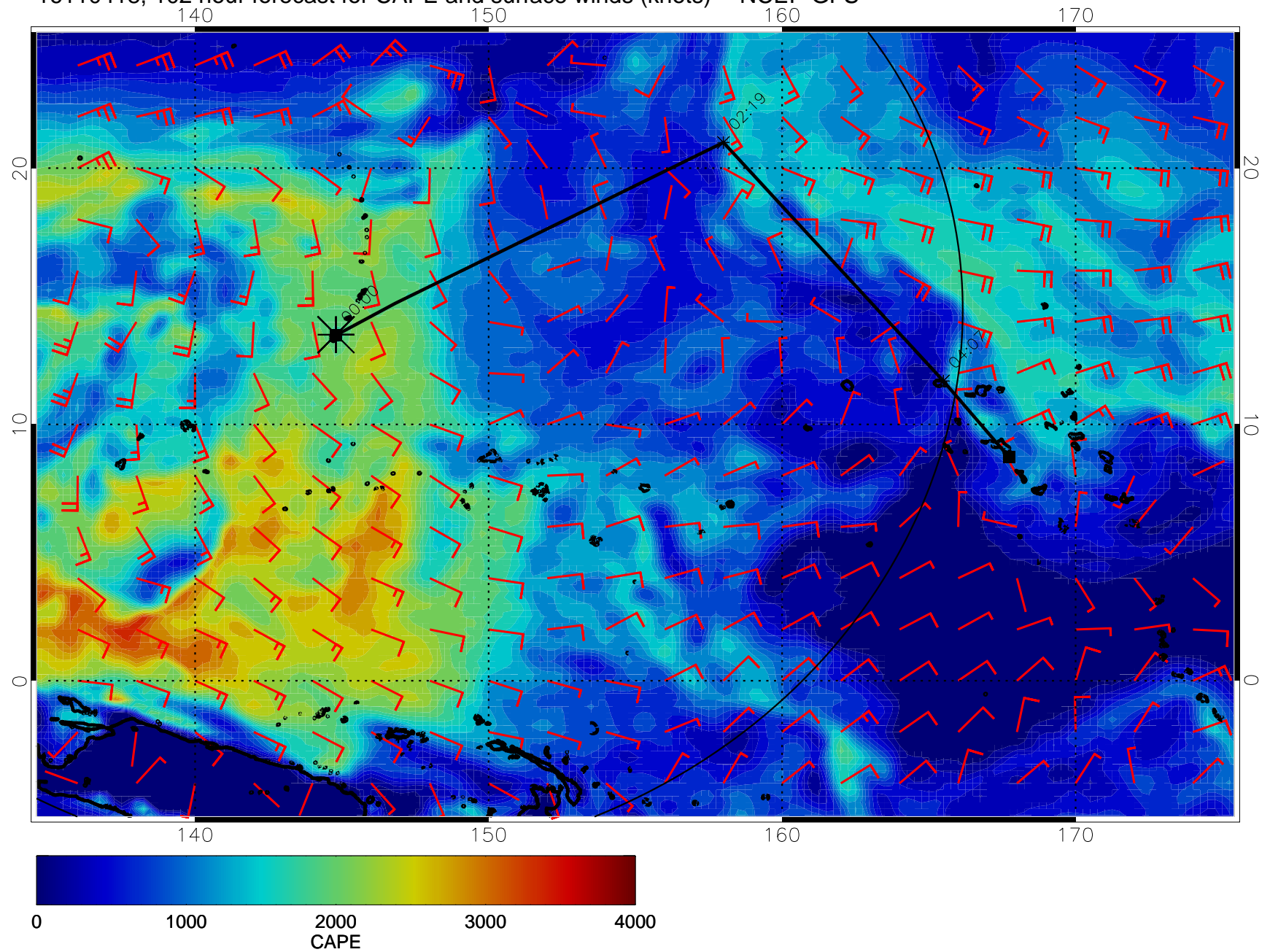


16110412, 096 hour forecast for CAPE and surface winds (knots) -- NCEP GFS

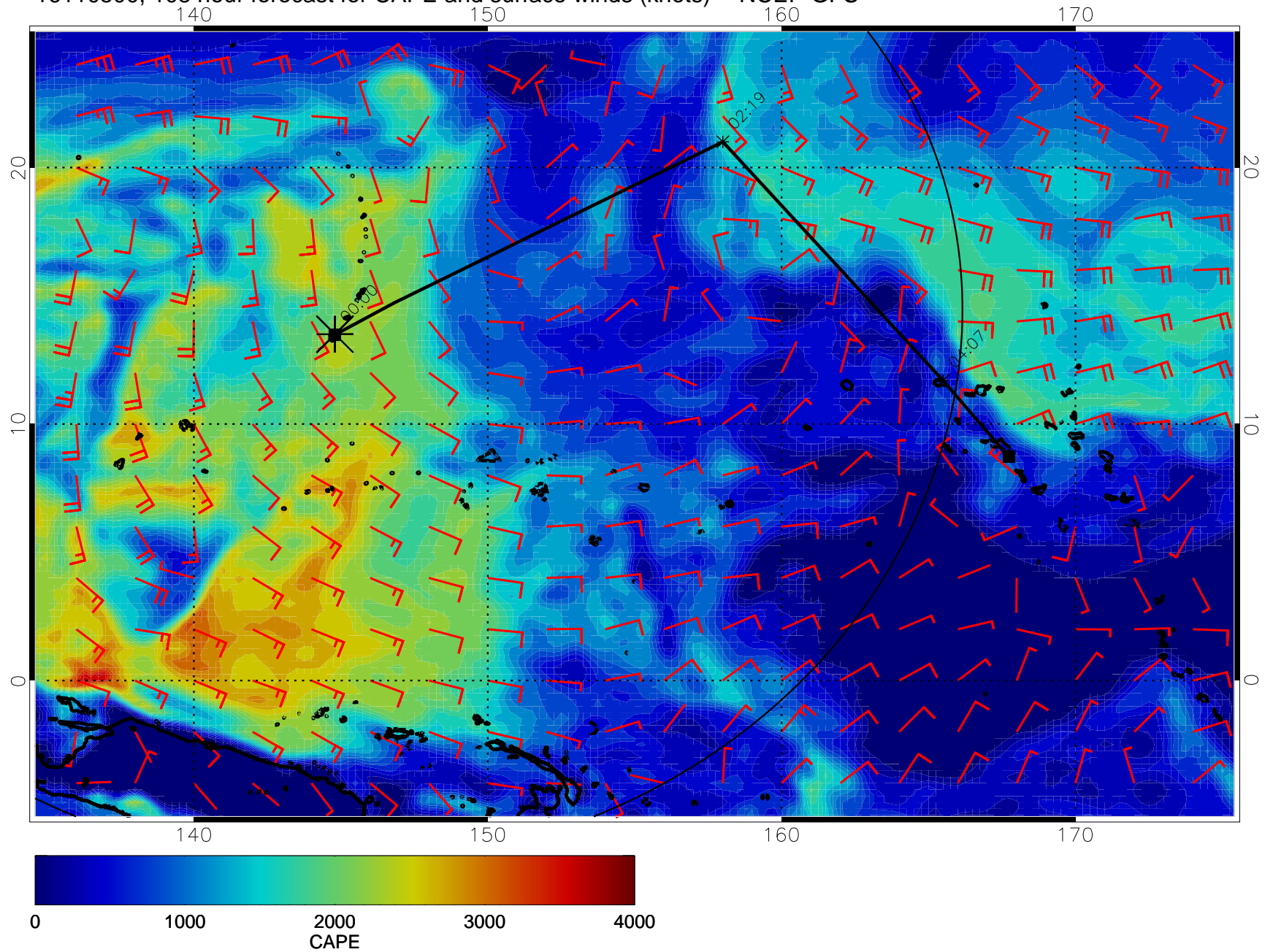




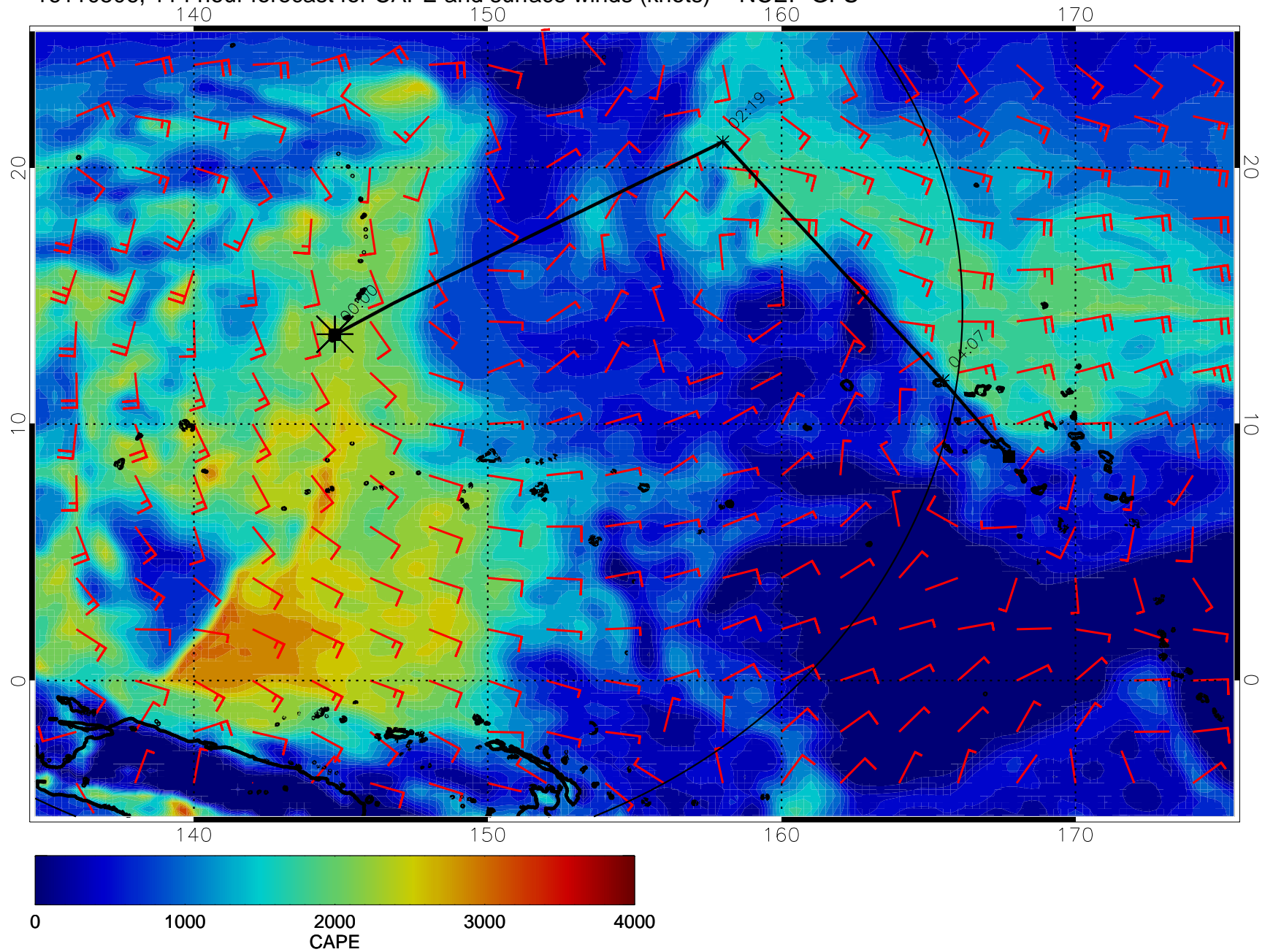
16110418, 102 hour forecast for CAPE and surface winds (knots) -- NCEP GFS



16110500, 108 hour forecast for CAPE and surface winds (knots) -- NCEP GFS



16110506, 114 hour forecast for CAPE and surface winds (knots) -- NCEP GFS



16110512, 120 hour forecast for CAPE and surface winds (knots) -- NCEP GFS

