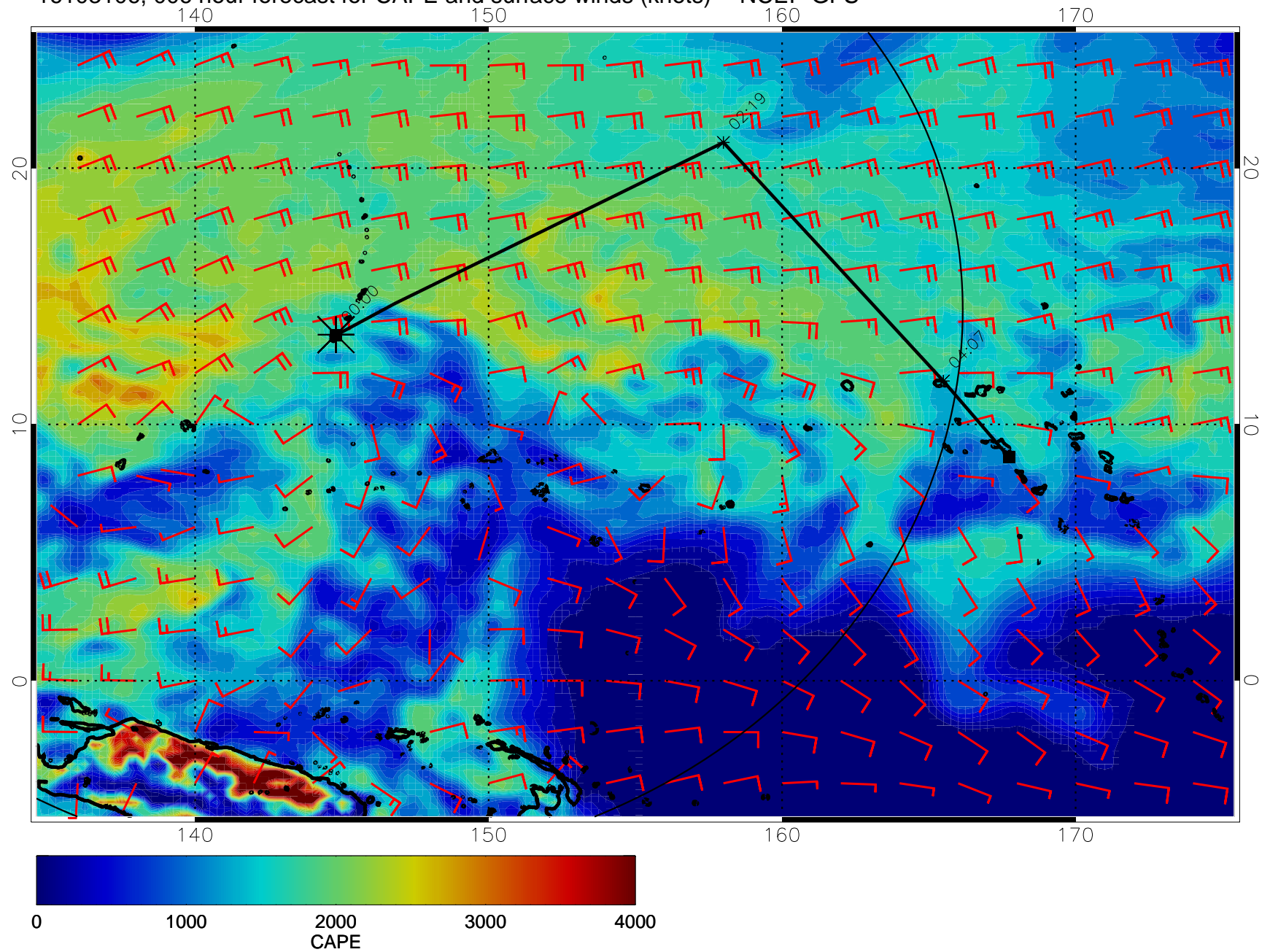
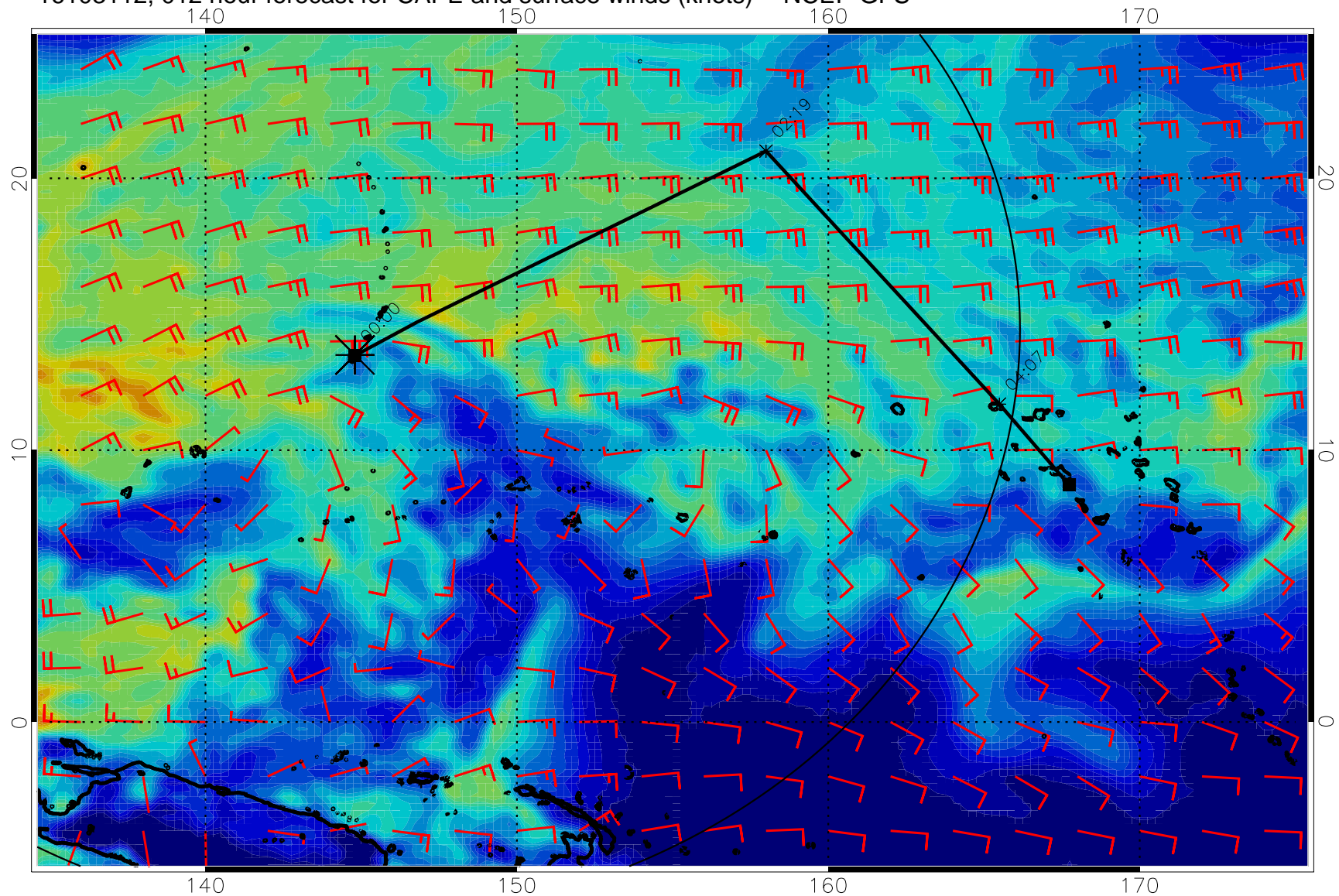


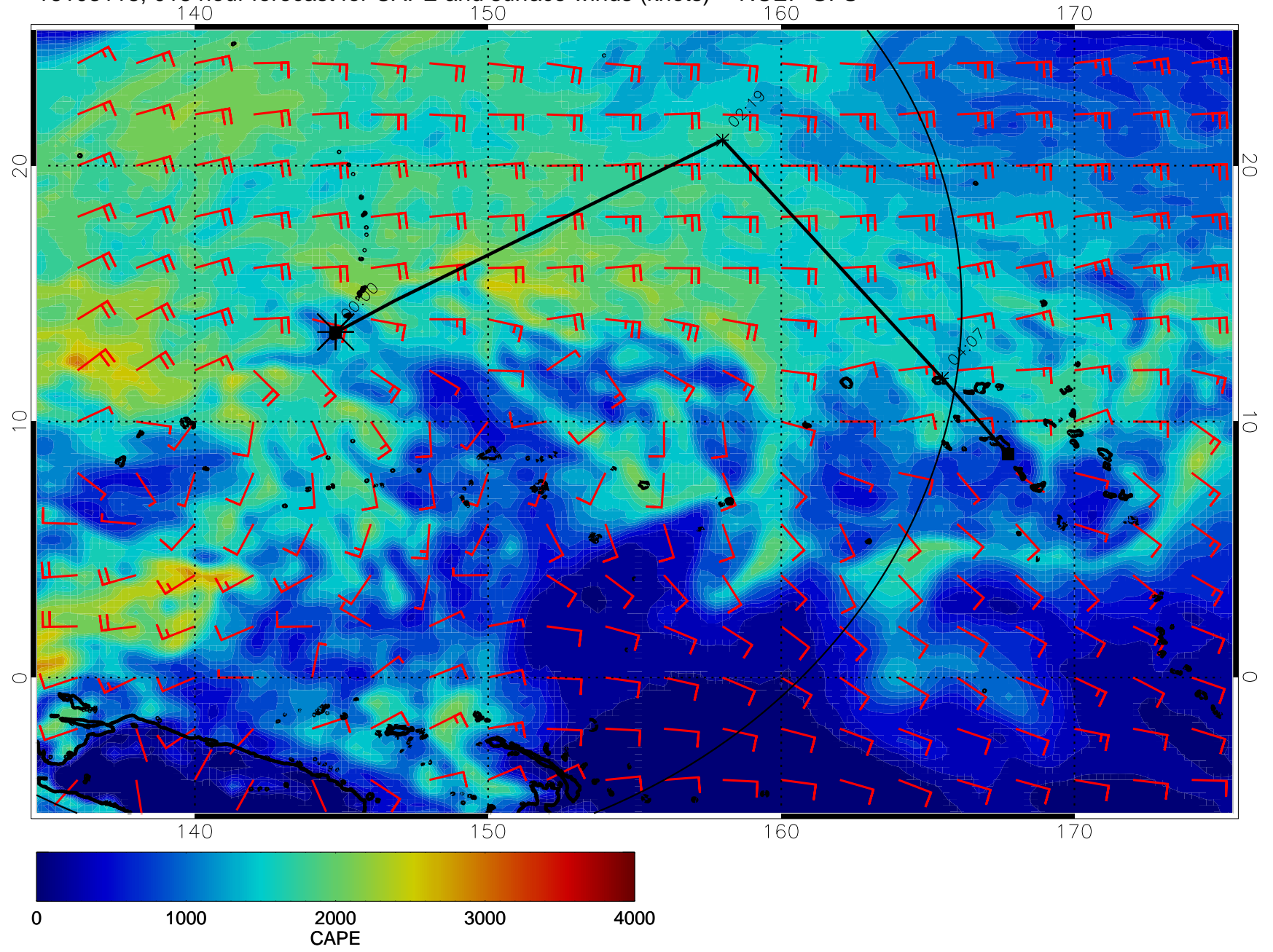
16103106, 006 hour forecast for CAPE and surface winds (knots) -- NCEP GFS



16103112, 012 hour forecast for CAPE and surface winds (knots) -- NCEP GFS

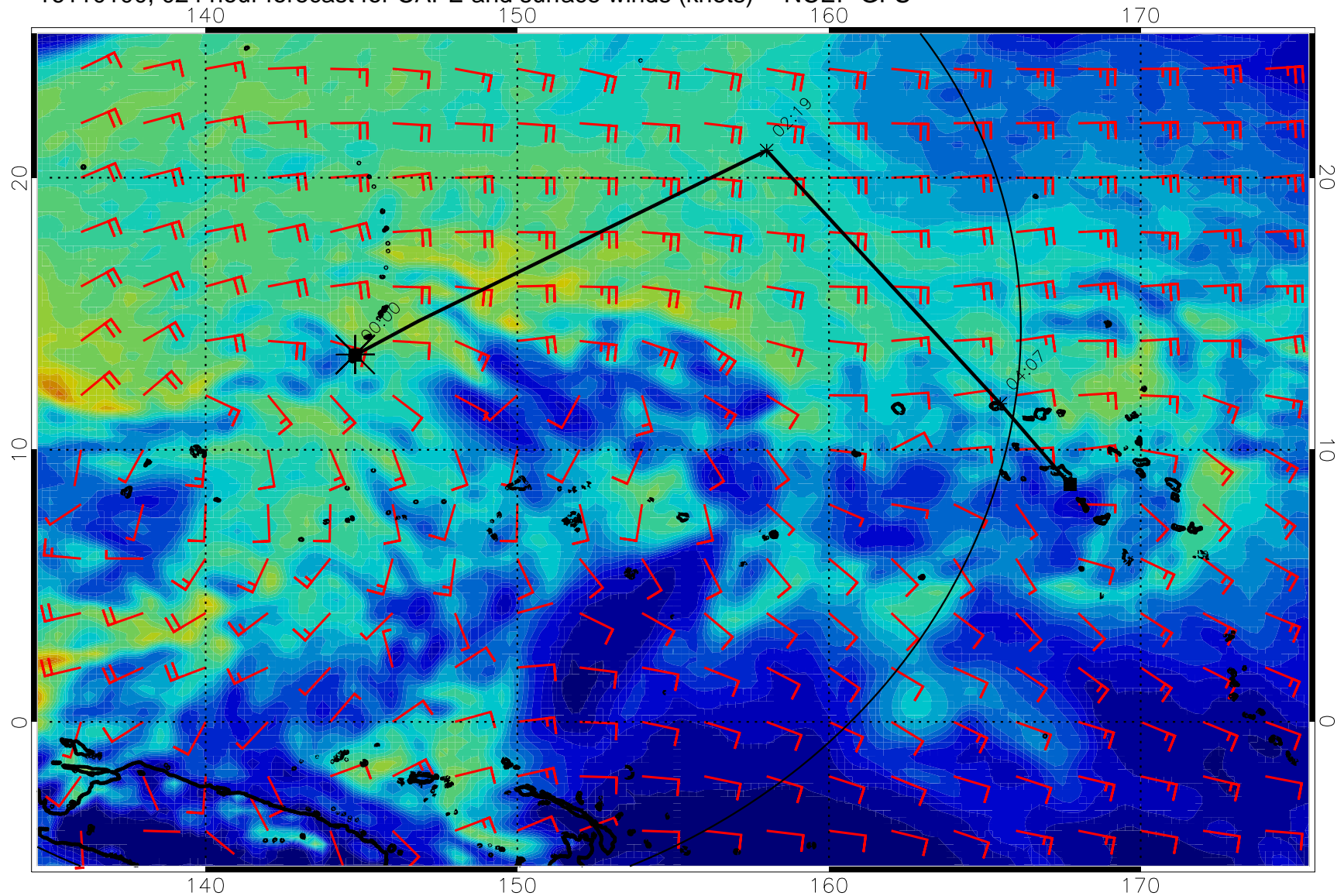


16103118, 018 hour forecast for CAPE and surface winds (knots) -- NCEP GFS



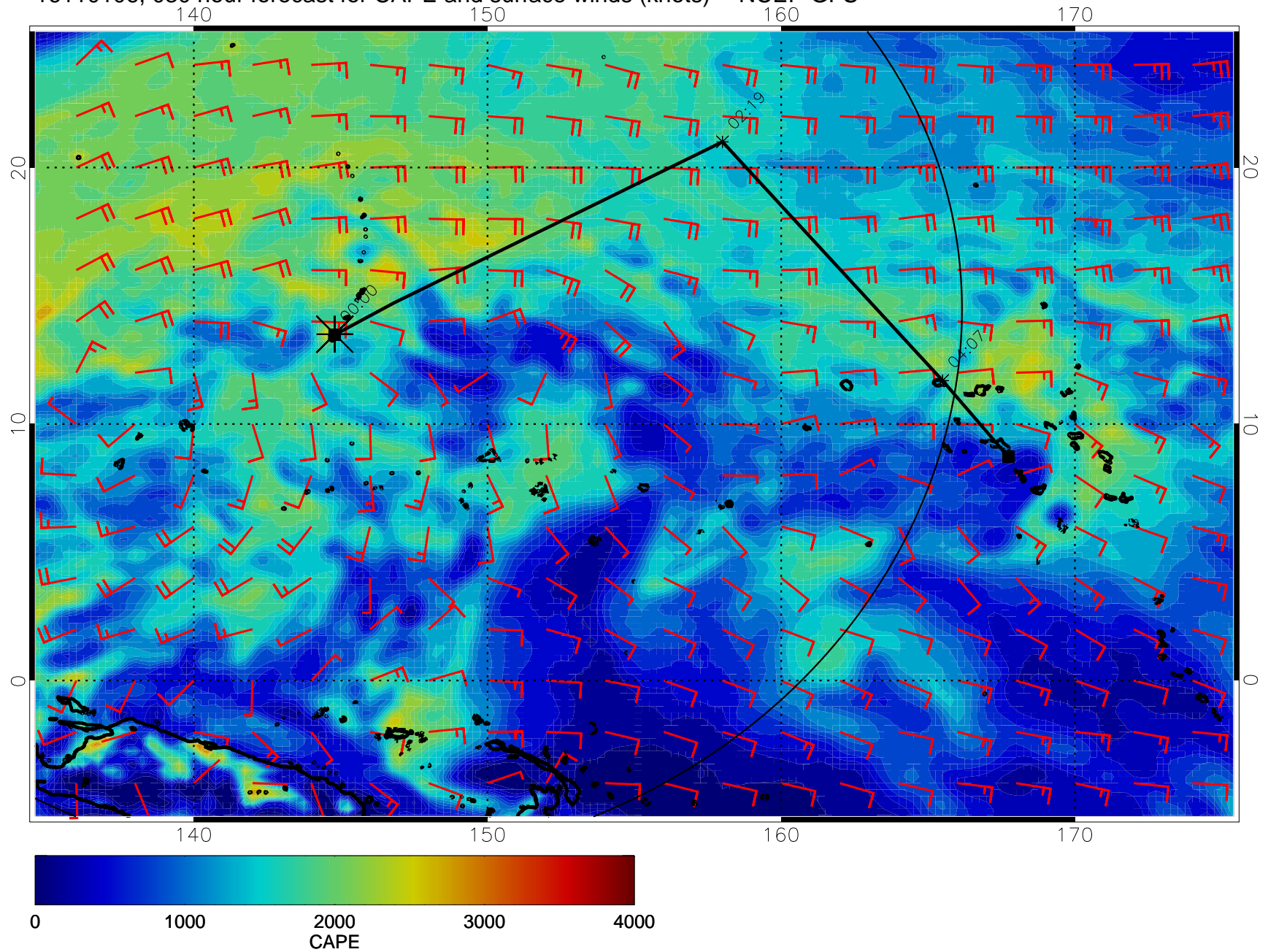


16110100, 024 hour forecast for CAPE and surface winds (knots) -- NCEP GFS

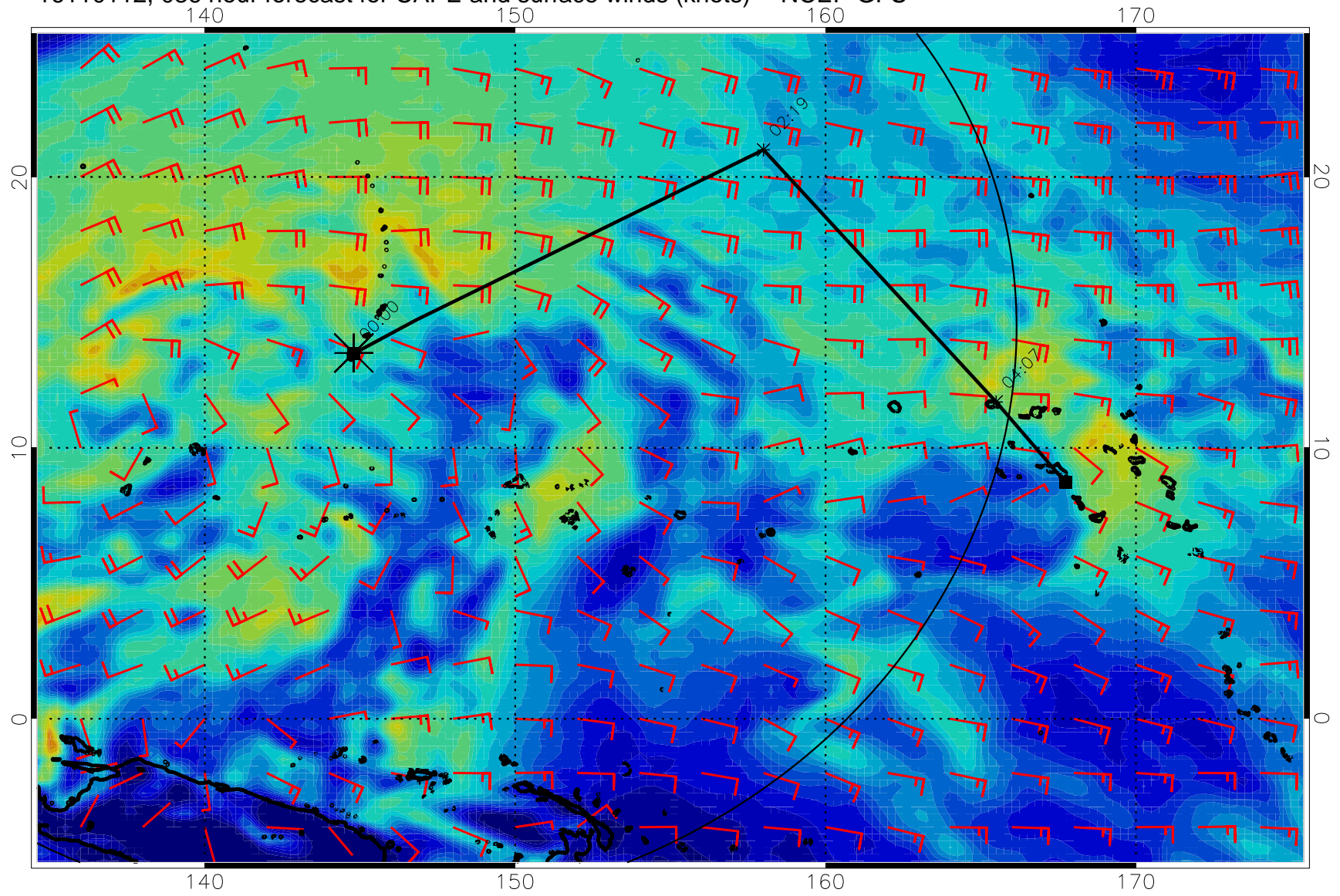




16110106, 0300 hour forecast for CAPE and surface winds (knots) -- NCEP GFS

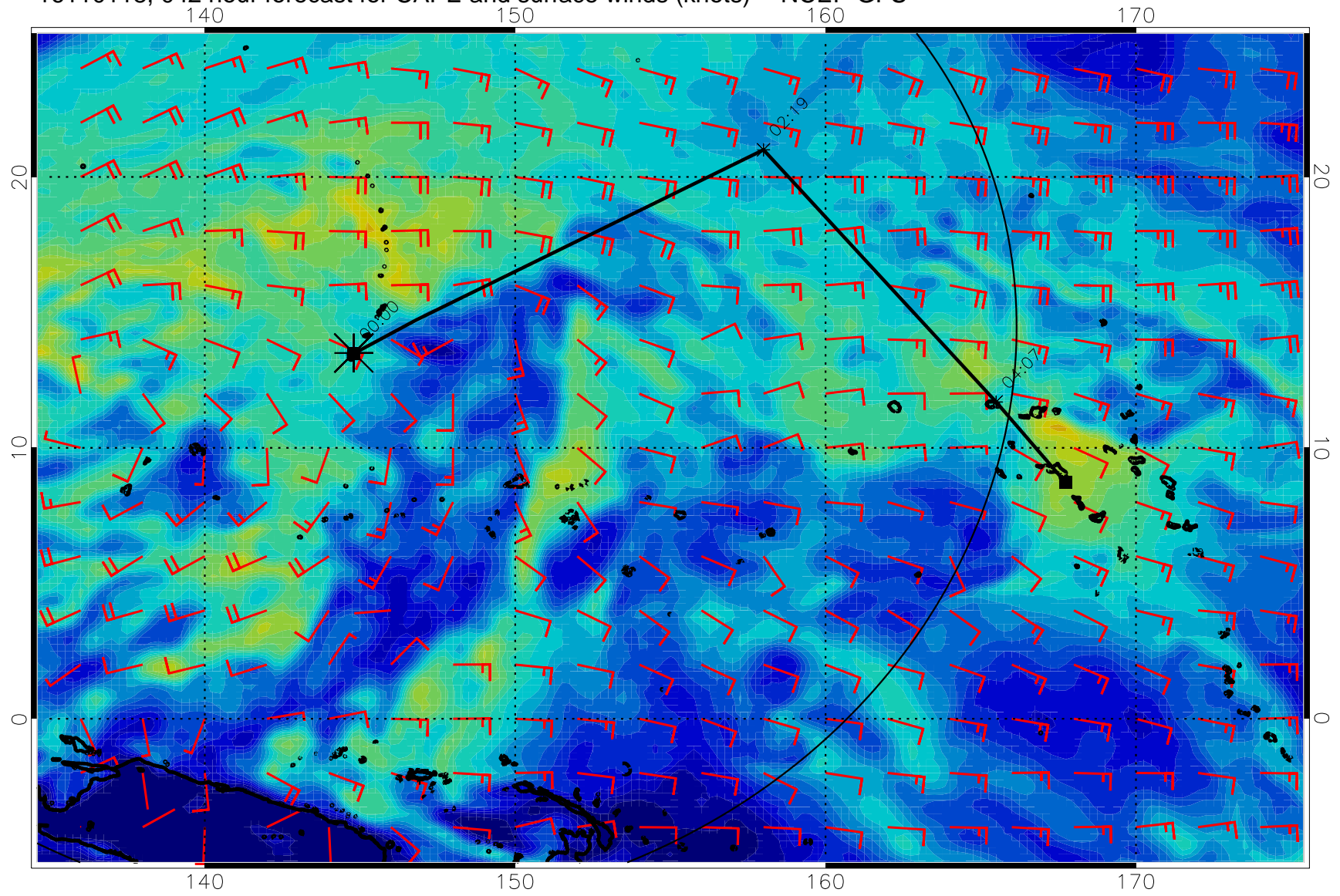


16110112, 036 hour forecast for CAPE and surface winds (knots) -- NCEP GFS



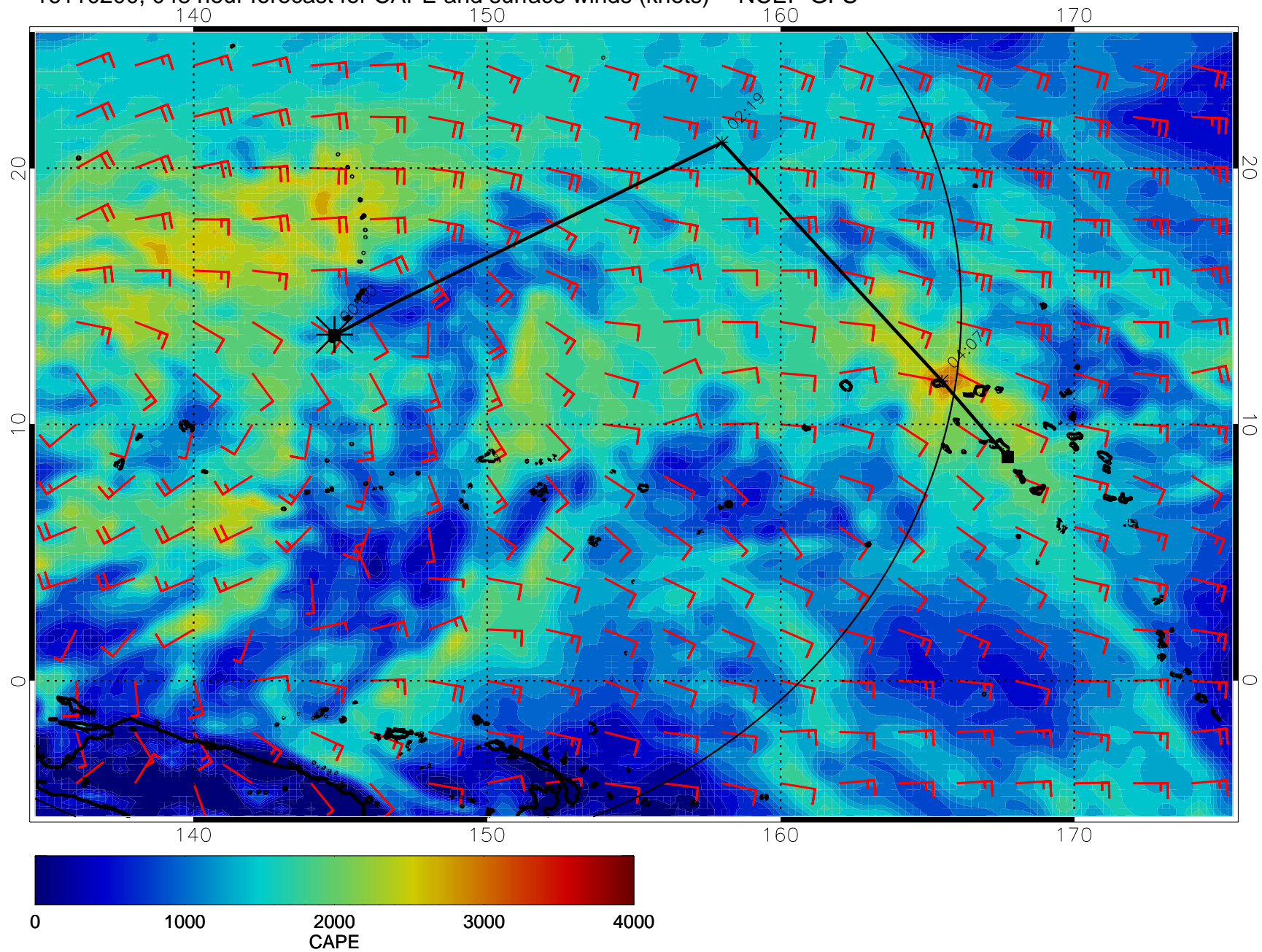


16110118, 042 hour forecast for CAPE and surface winds (knots) -- NCEP GFS

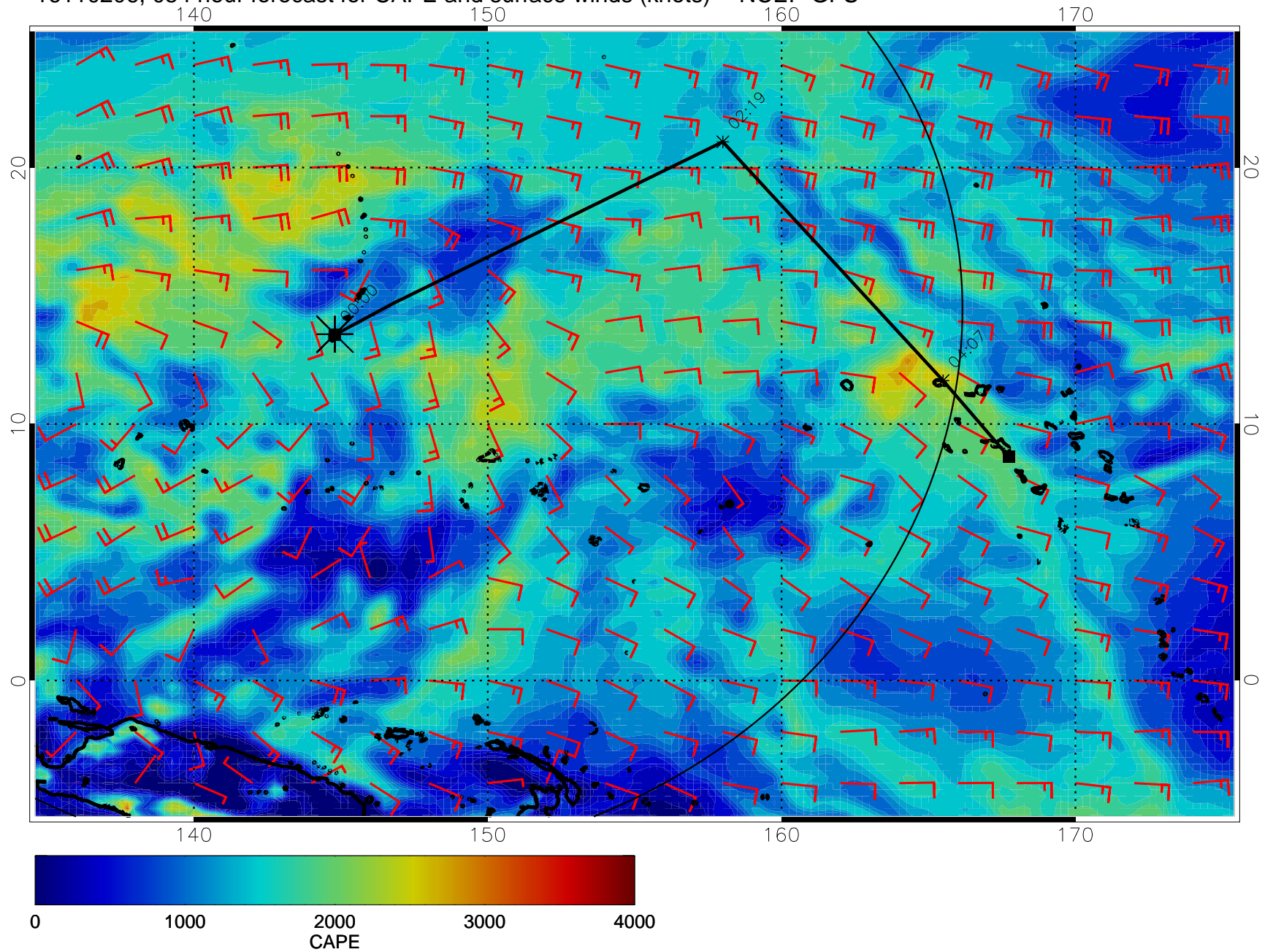




16110200, 048 hour forecast for CAPE and surface winds (knots) -- NCEP GFS

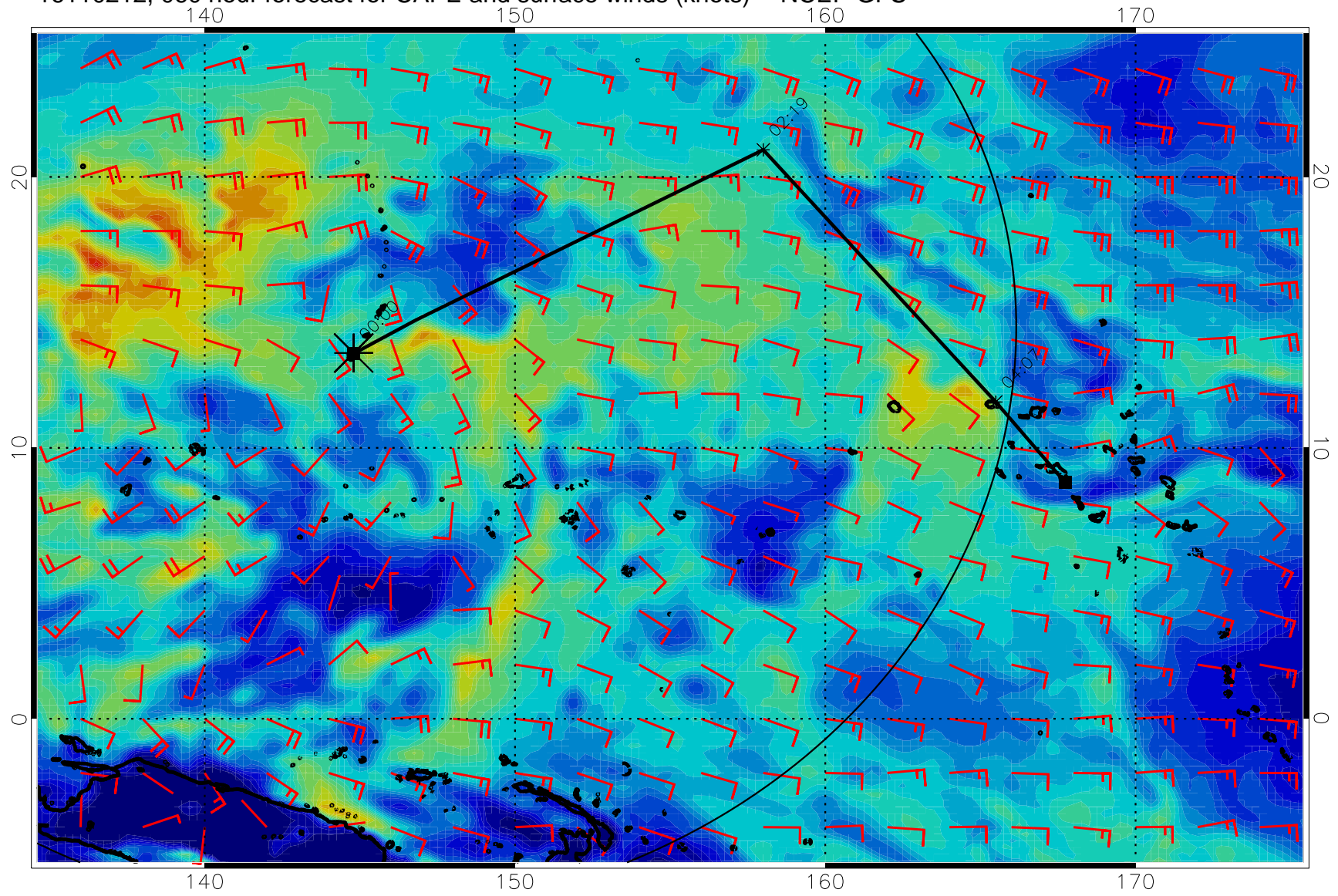


16110206, 054 hour forecast for CAPE and surface winds (knots) -- NCEP GFS



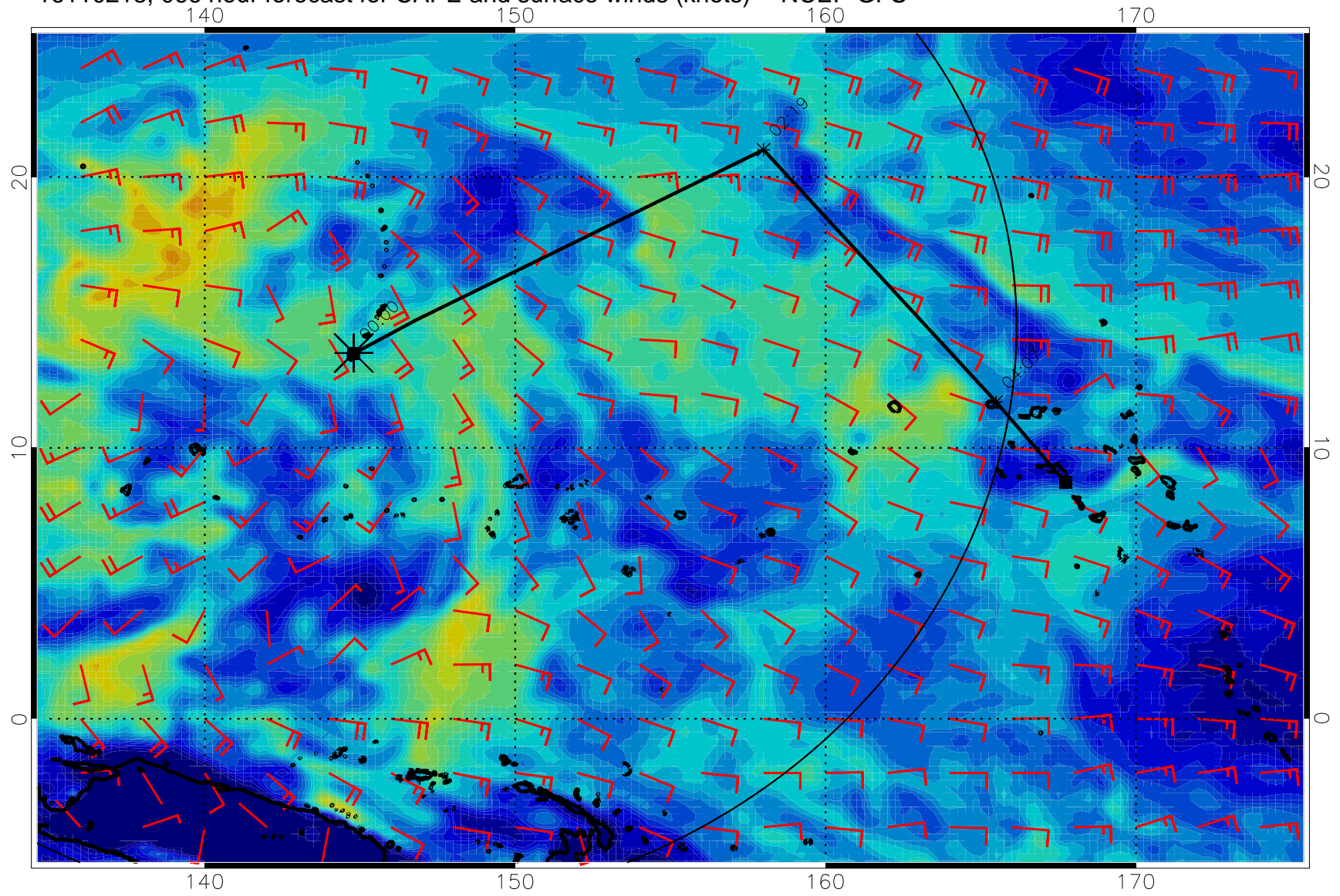


16110212, 0600 hour forecast for CAPE and surface winds (knots) -- NCEP GFS

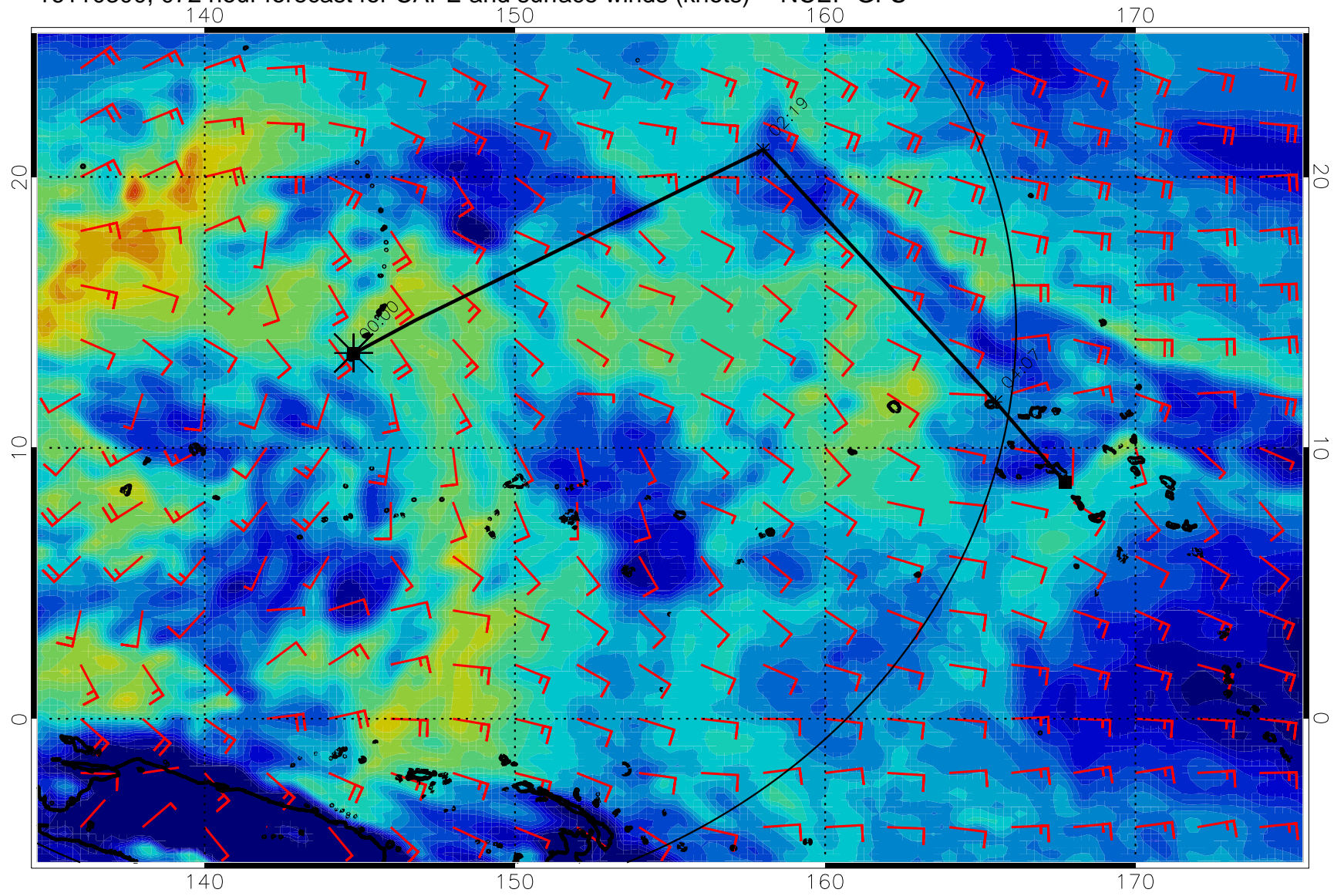




16110218, 066 hour forecast for CAPE and surface winds (knots) -- NCEP GFS

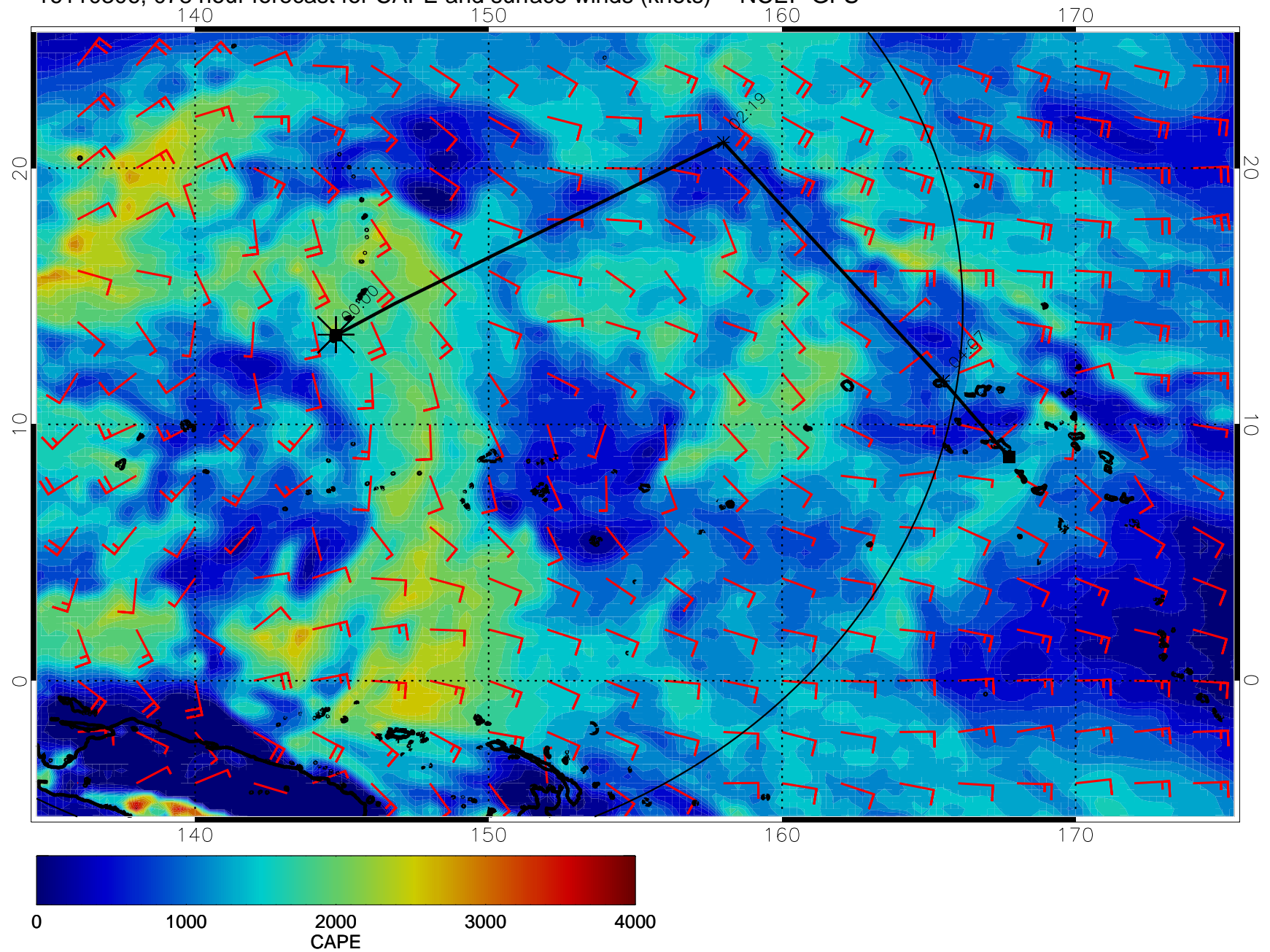


16110300, 072 hour forecast for CAPE and surface winds (knots) -- NCEP GFS



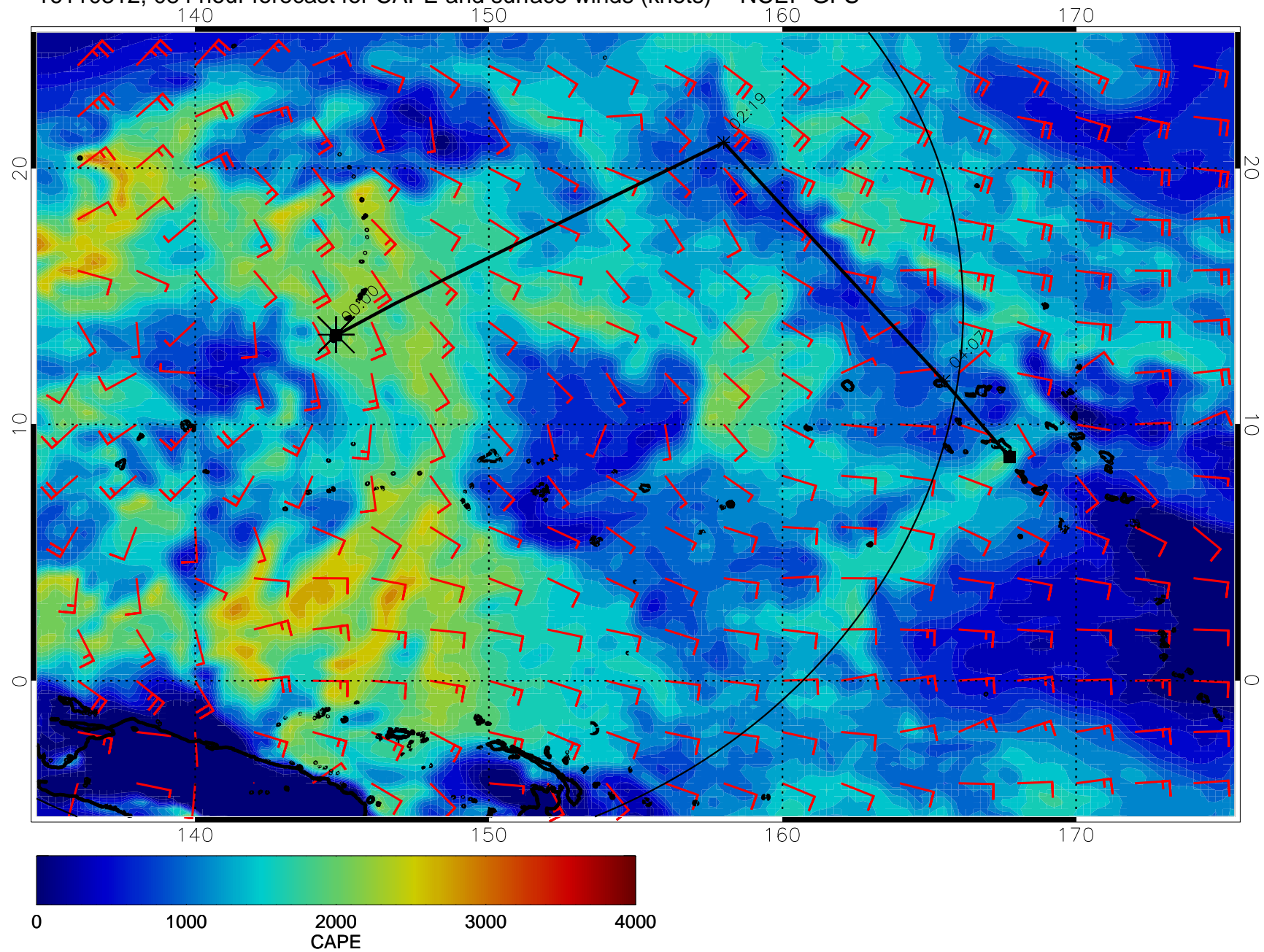


16110306, 078 hour forecast for CAPE and surface winds (knots) -- NCEP GFS

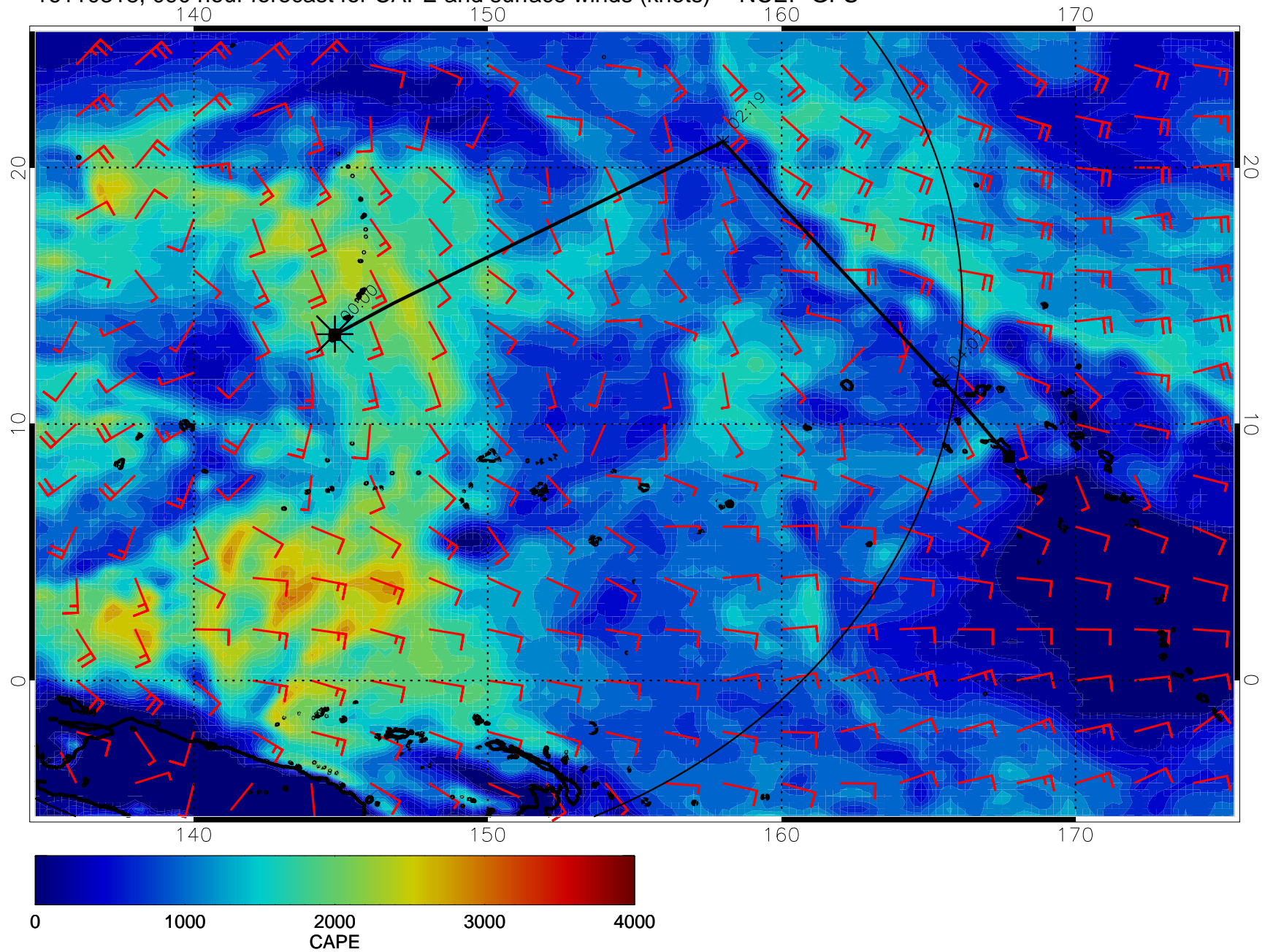




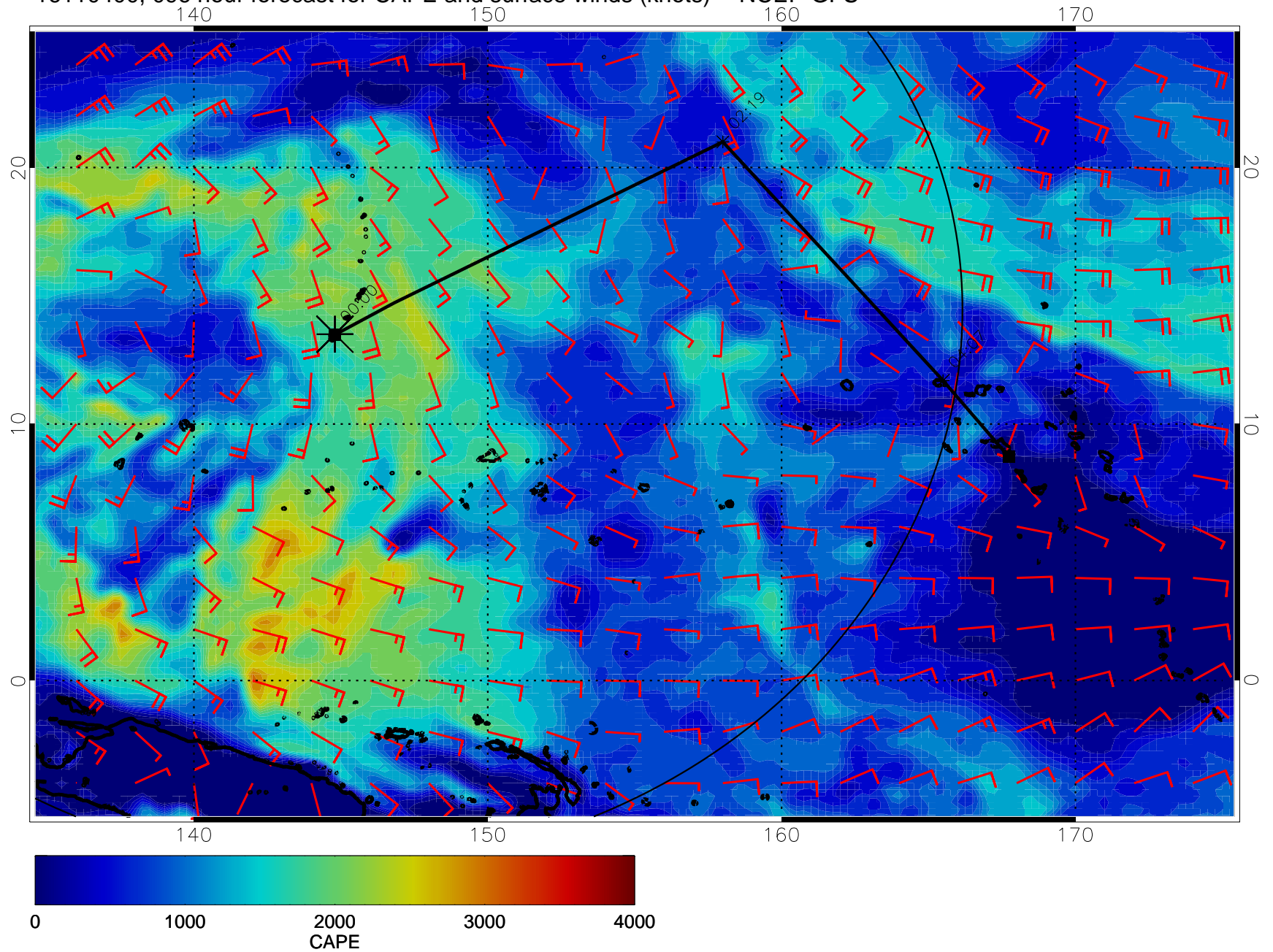
16110312, 084 hour forecast for CAPE and surface winds (knots) -- NCEP GFS



16110318, 0900 hour forecast for CAPE and surface winds (knots) -- NCEP GFS

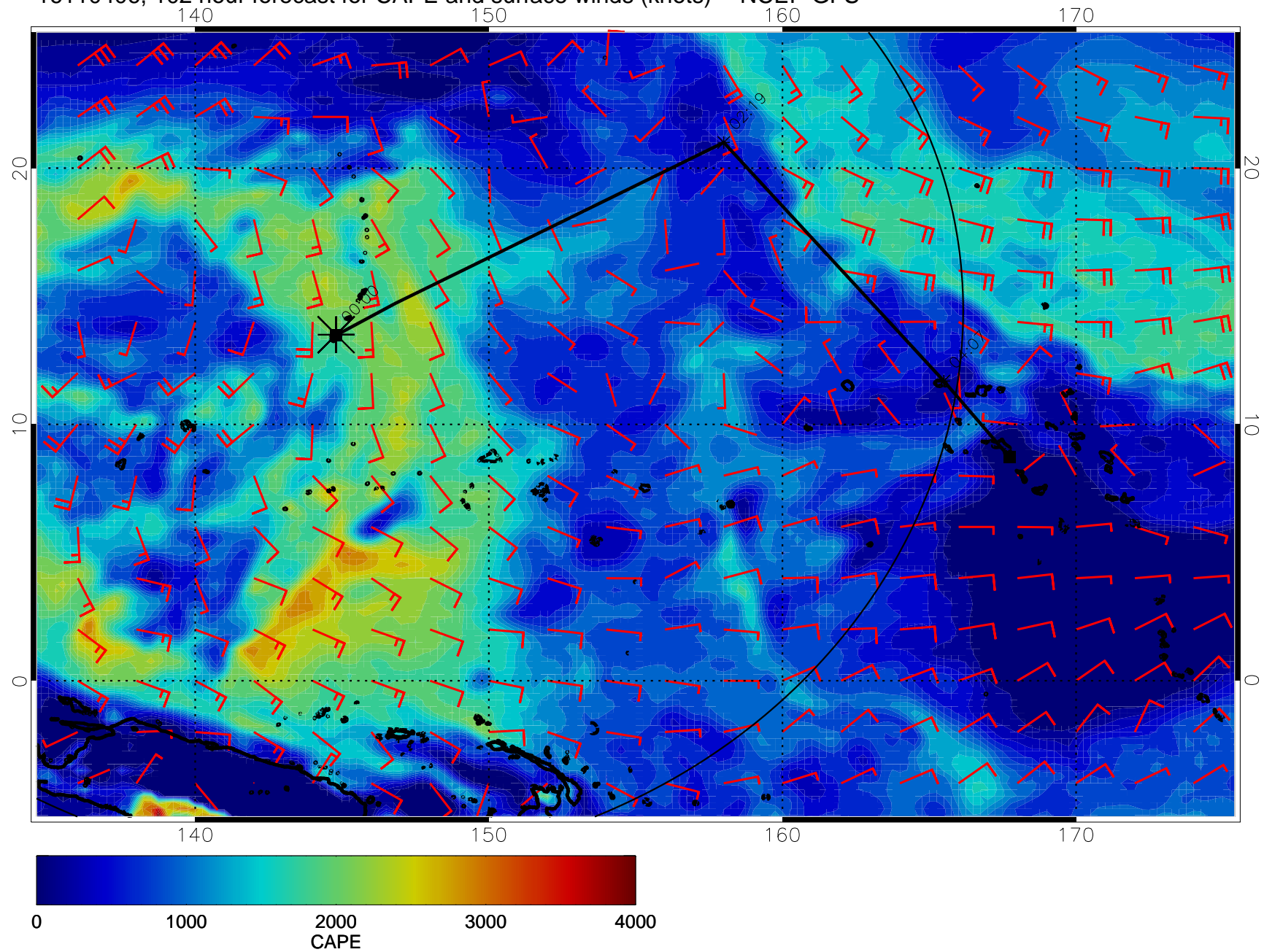


16110400, 096 hour forecast for CAPE and surface winds (knots) -- NCEP GFS

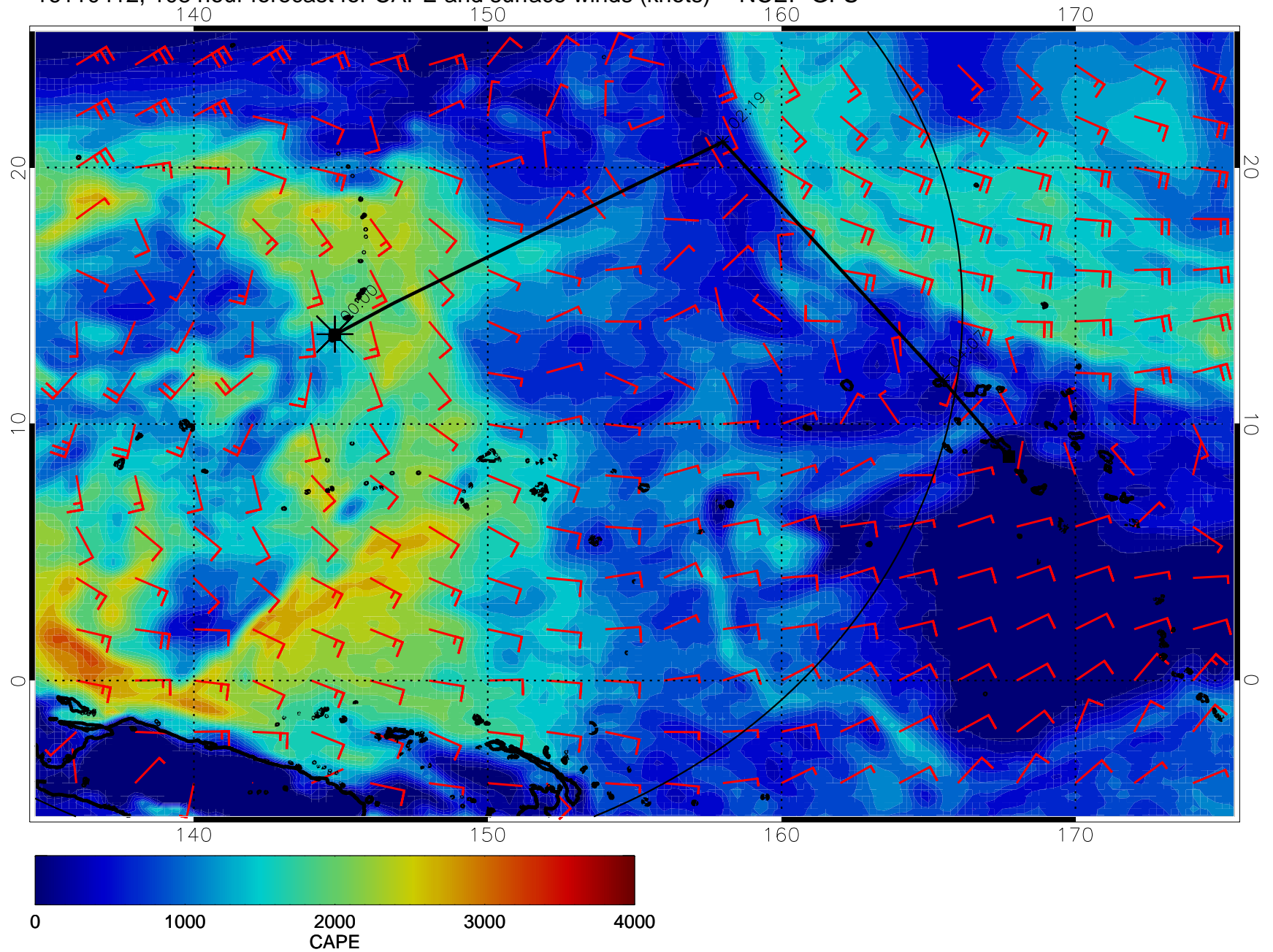




16110406, 102 hour forecast for CAPE and surface winds (knots) -- NCEP GFS

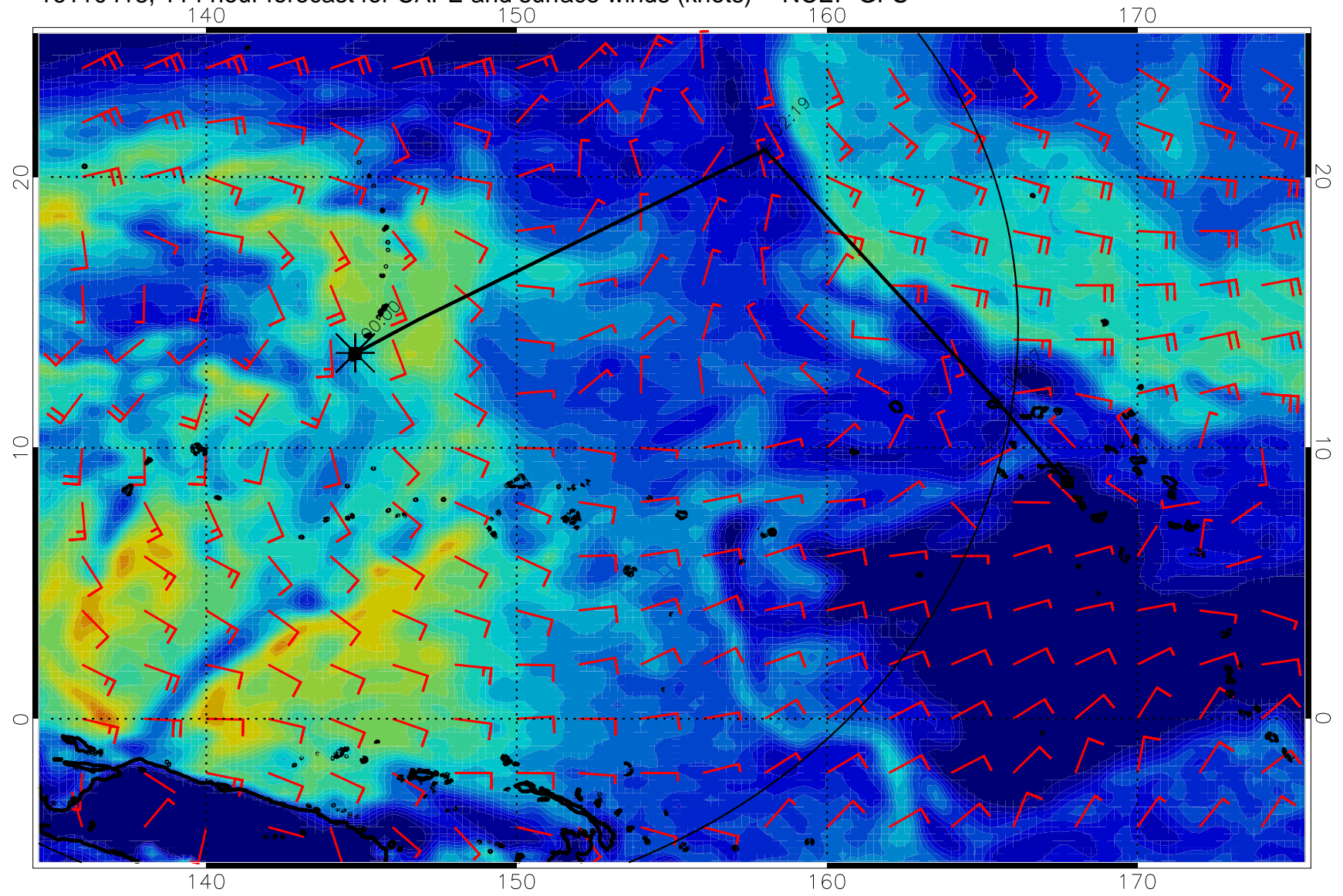


16110412, 108 hour forecast for CAPE and surface winds (knots) -- NCEP GFS





16110418, 114 hour forecast for CAPE and surface winds (knots) -- NCEP GFS



16110500, 120 hour forecast for CAPE and surface winds (knots) -- NCEP GFS

