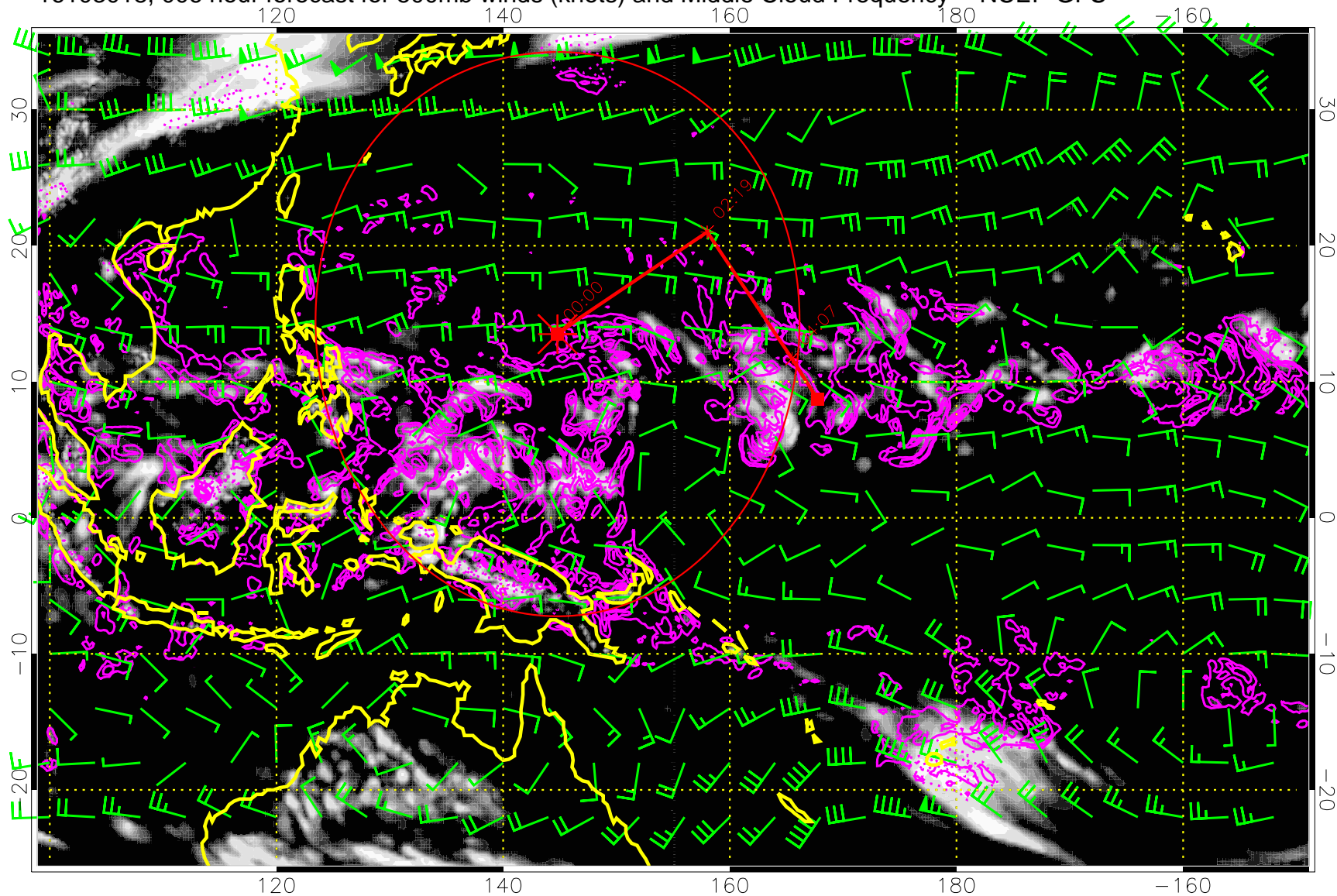


16103018, 006 hour forecast for 500mb winds (knots) and Middle Cloud Frequency -- NCEP GFS

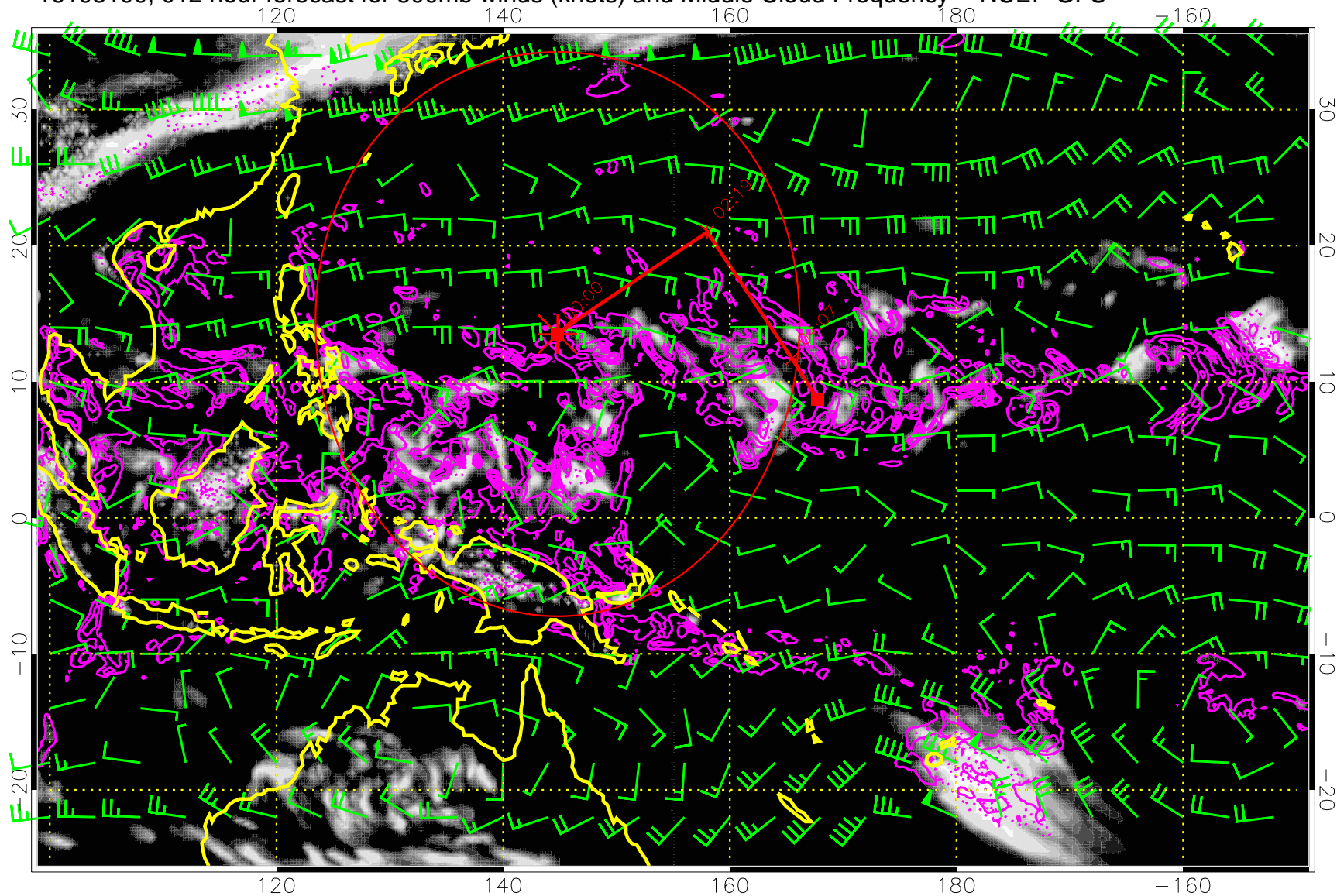


Middle Cloud Frequency

Precip (tot dot, conv sol) mm/day 40 mm/day contours, min 20

Range ring of 2304 km

16103100, 012 hour forecast for 500mb winds (knots) and Middle Cloud Frequency -- NCEP GFS

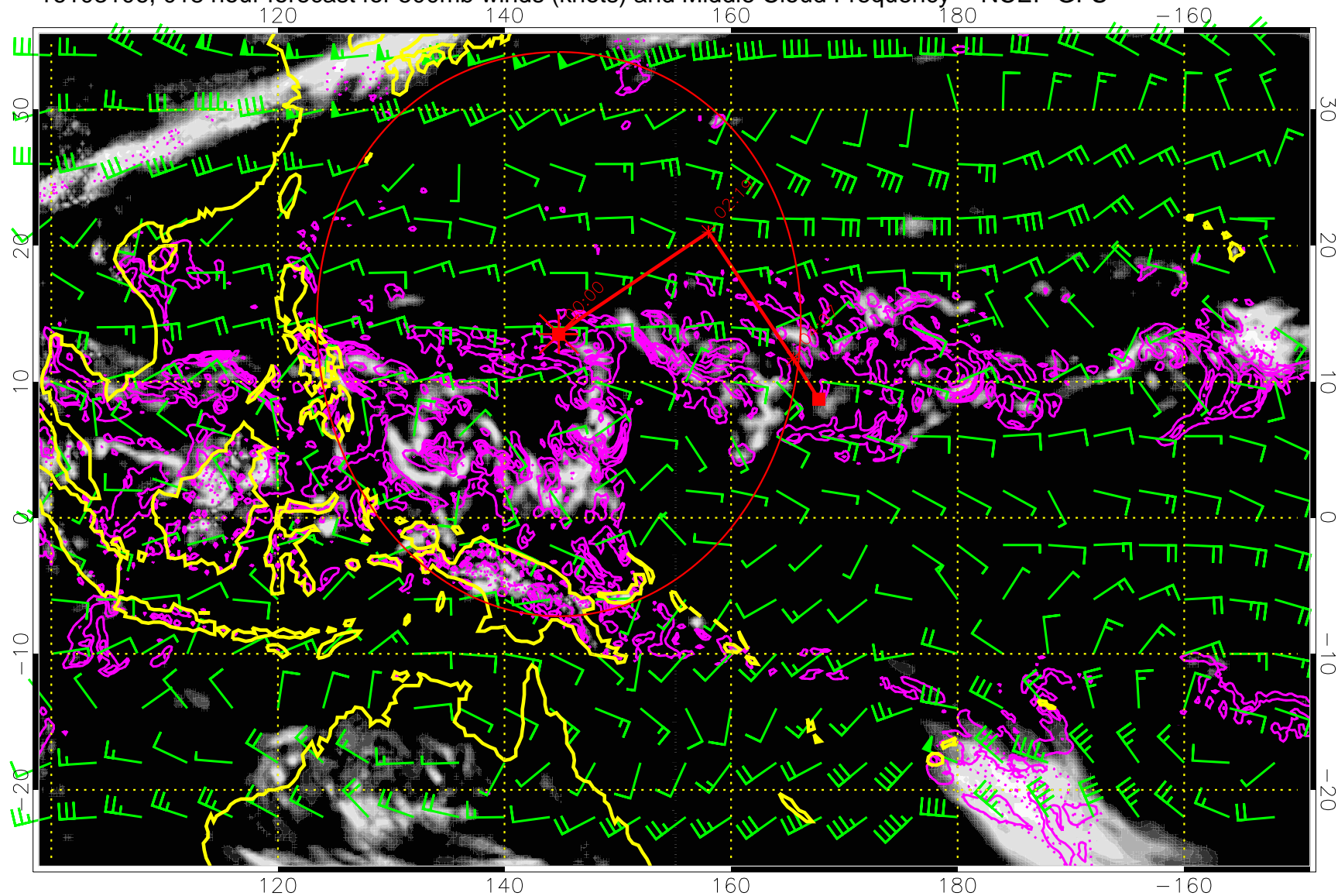


0.0 0.2 0.4 0.6 0.8 1.0
Middle Cloud Frequency

Precip (tot dot, conv sol) mm/day 40 mm/day contours, min 20

Range ring of 2304 km

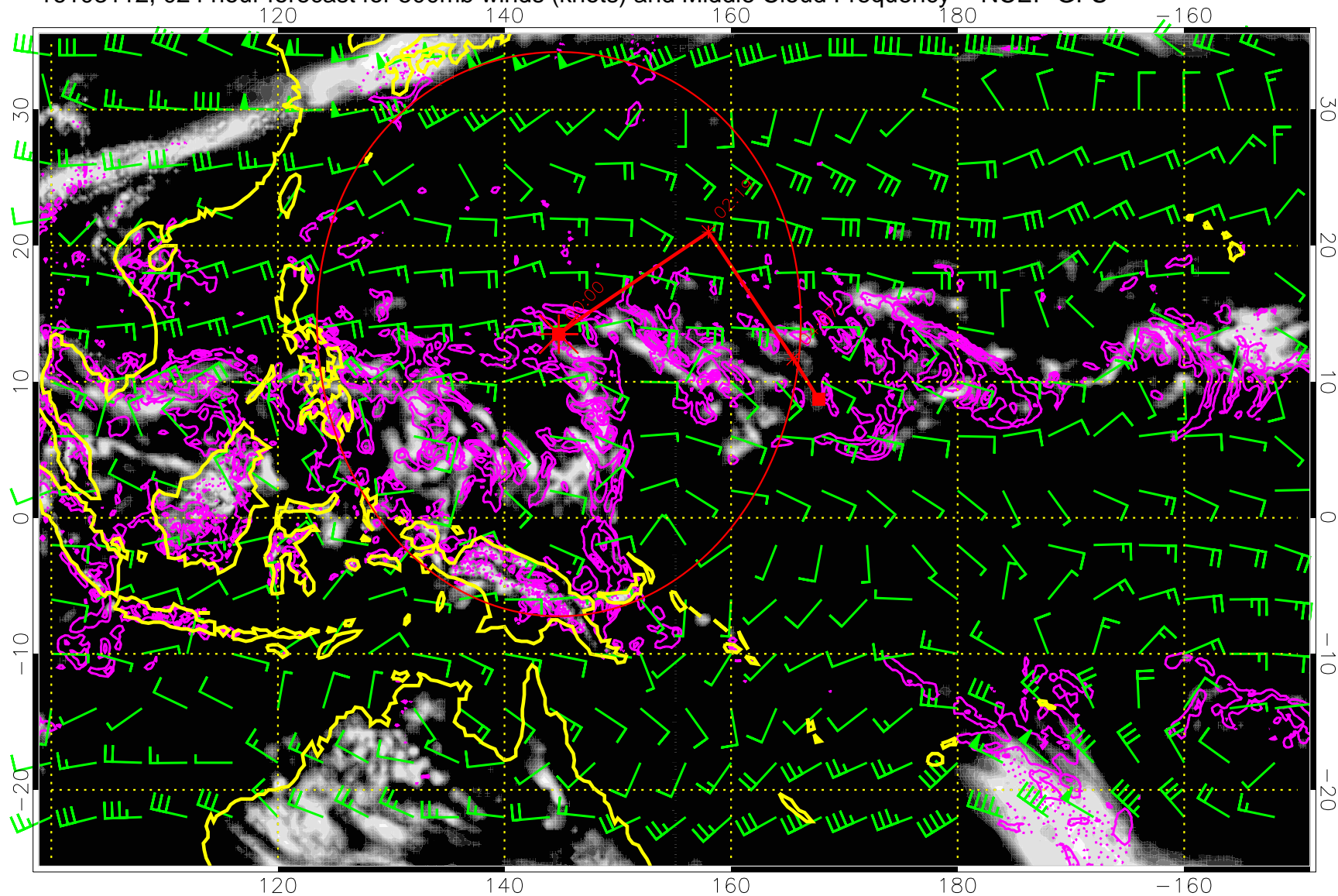
16103106, 018 hour forecast for 500mb winds (knots) and Middle Cloud Frequency -- NCEP GFS



Precip (tot dot, conv sol) mm/day 40 mm/day contours, min 20

Range ring of 2304 km

16103112, 024 hour forecast for 500mb winds (knots) and Middle Cloud Frequency -- NCEP GFS

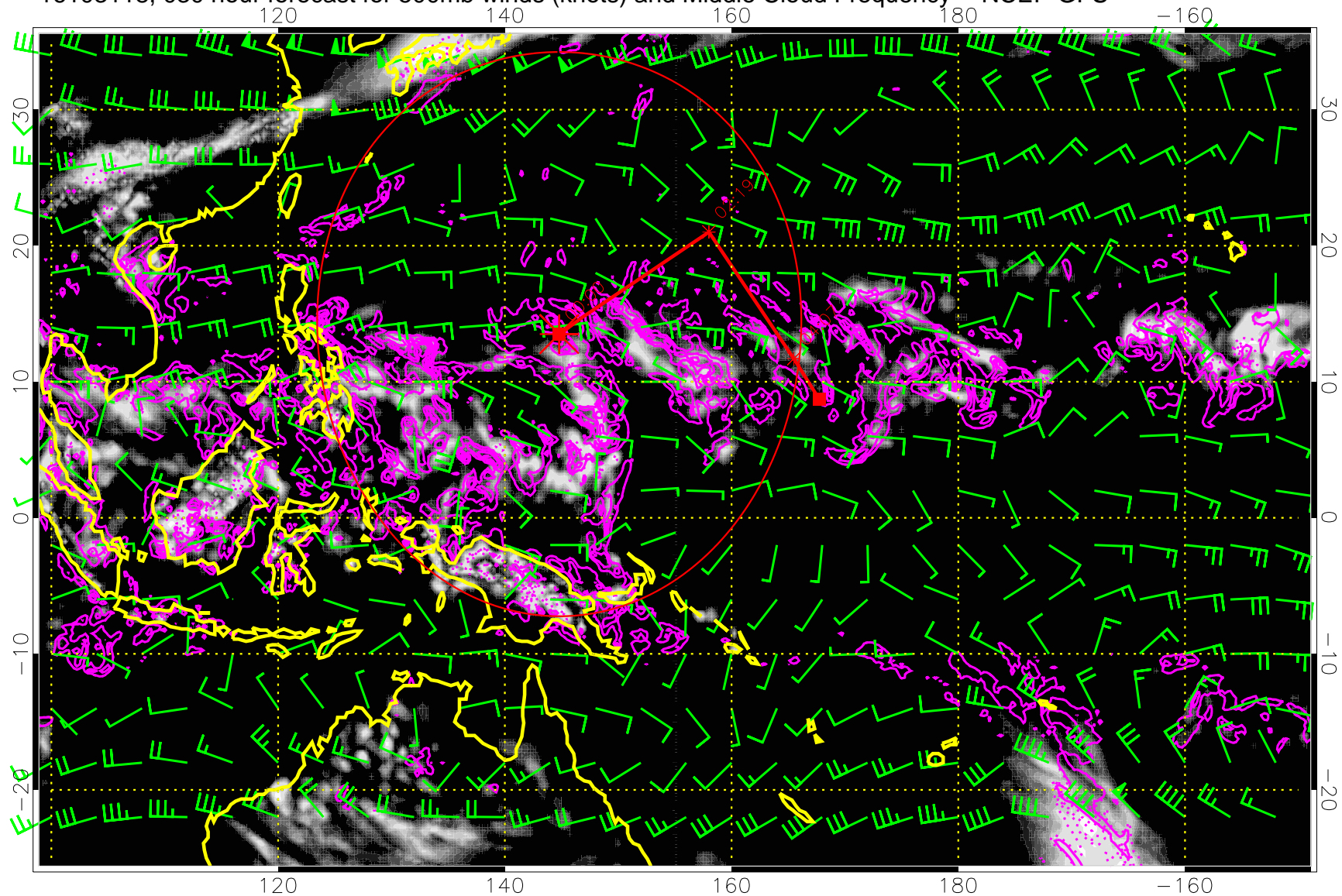


Middle Cloud Frequency

Precip (tot dot, conv sol) mm/day 40 mm/day contours, min 20

Range ring of 2304 km

16103118, 030 hour forecast for 500mb winds (knots) and Middle Cloud Frequency -- NCEP GFS

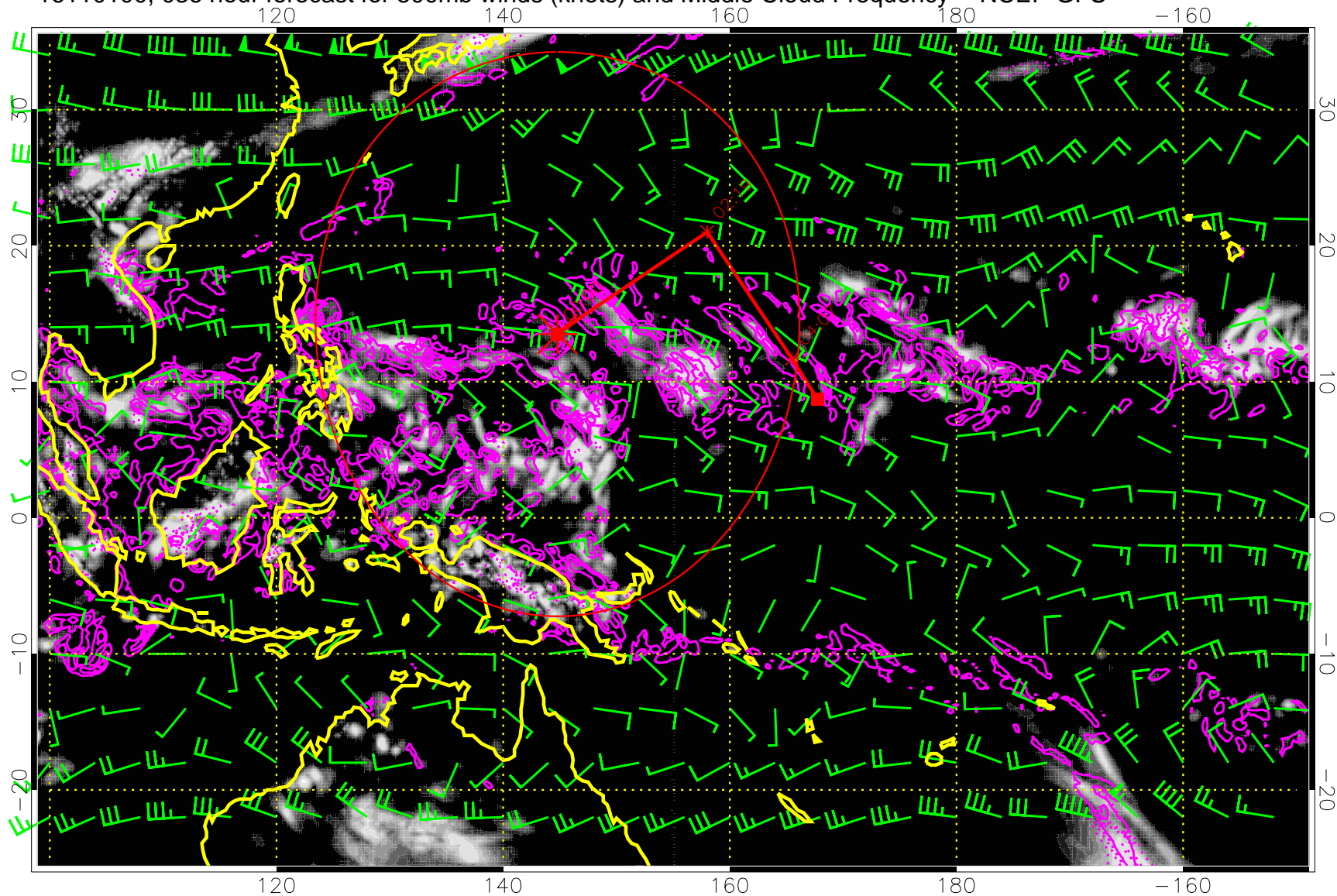


Middle Cloud Frequency

Precip (tot dot, conv sol) mm/day 40 mm/day contours, min 20

Range ring of 2304 km

16110100, 036 hour forecast for 500mb winds (knots) and Middle Cloud Frequency -- NCEP GFS

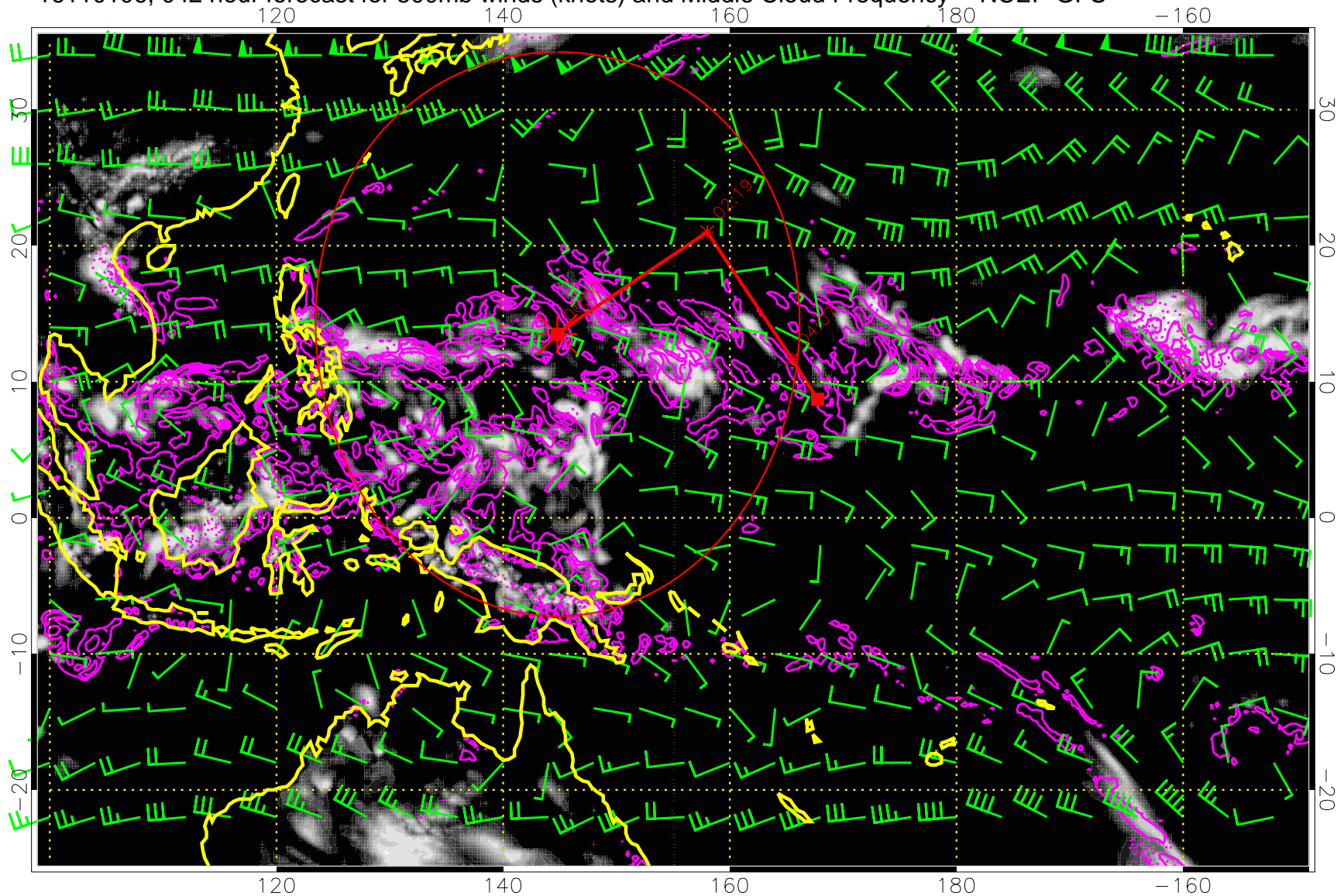


Middle Cloud Frequency

Precip (tot dot, conv sol) mm/day 40 mm/day contours, min 20

Range ring of 2304 km

16110106, 042 hour forecast for 500mb winds (knots) and Middle Cloud Frequency -- NCEP GFS

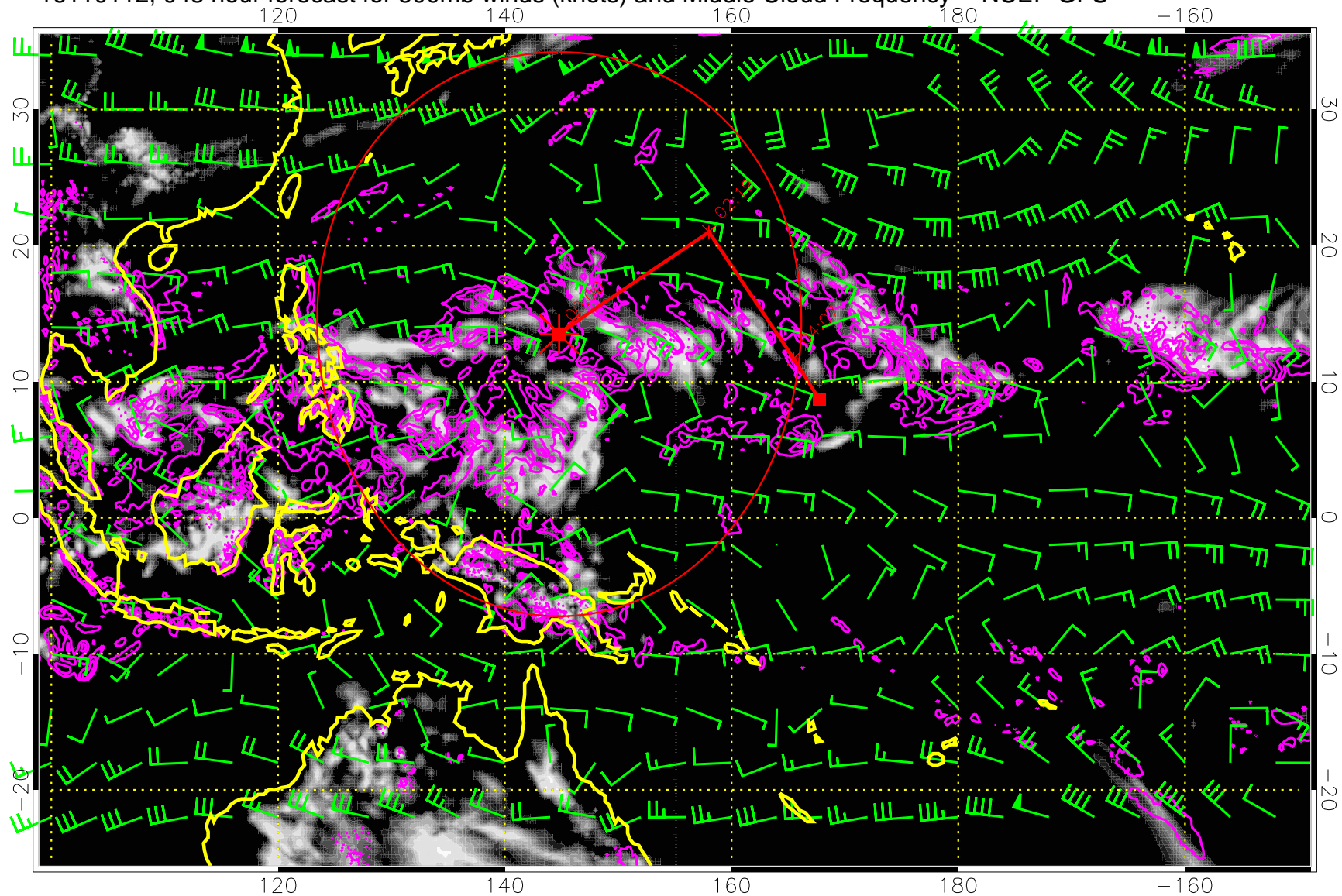


Middle Cloud Frequency

Precip (tot dot, conv sol) mm/day 40 mm/day contours, min 20

Range ring of 2304 km

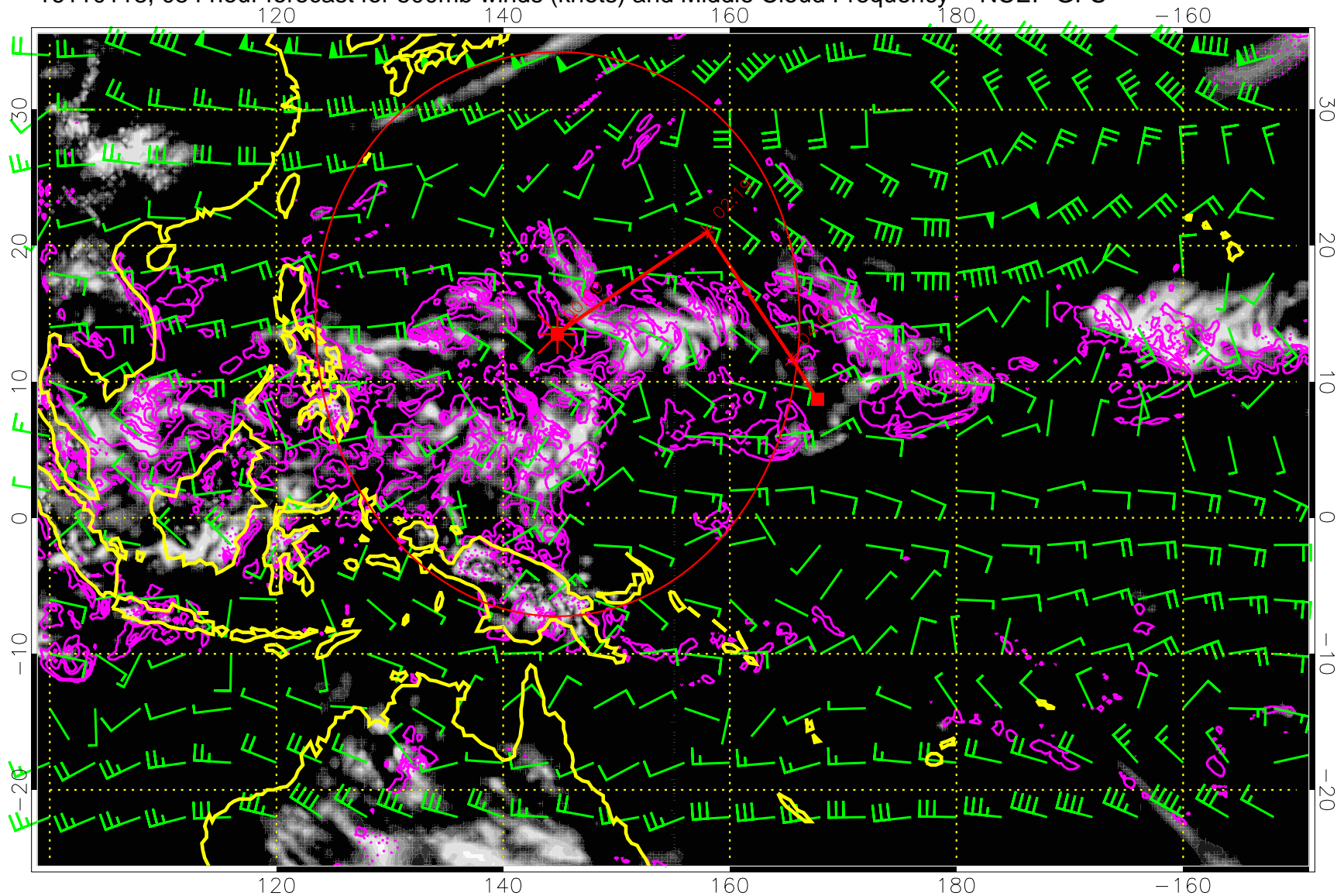
16110112, 048 hour forecast for 500mb winds (knots) and Middle Cloud Frequency -- NCEP GFS



Precip (tot dot, conv sol) mm/day 40 mm/day contours, min 20

Range ring of 2304 km

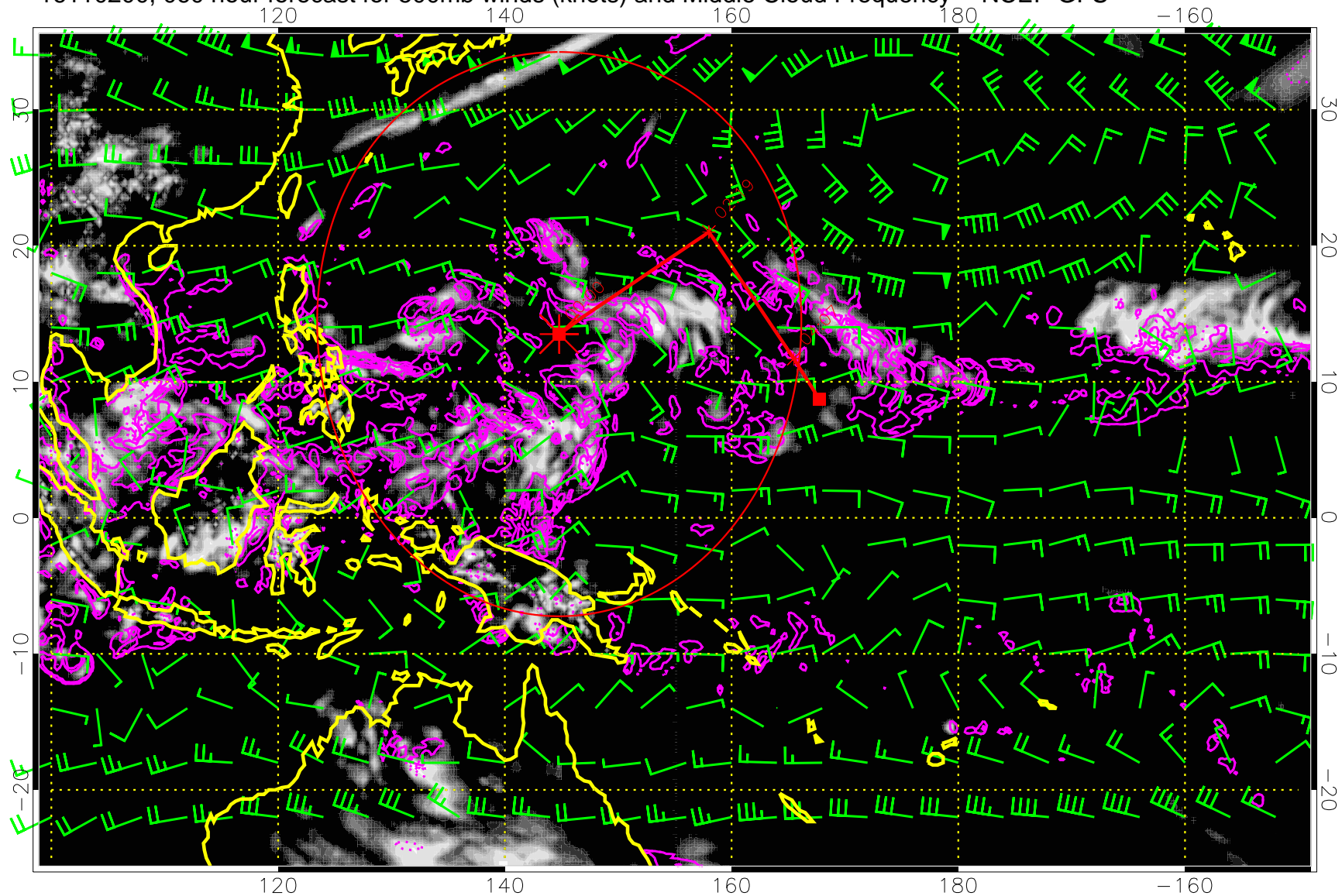
16110118, 054 hour forecast for 500mb winds (knots) and Middle Cloud Frequency -- NCEP GFS



Precip (tot dot, conv sol) mm/day 40 mm/day contours, min 20

Range ring of 2304 km

16110200, 060 hour forecast for 500mb winds (knots) and Middle Cloud Frequency -- NCEP GFS

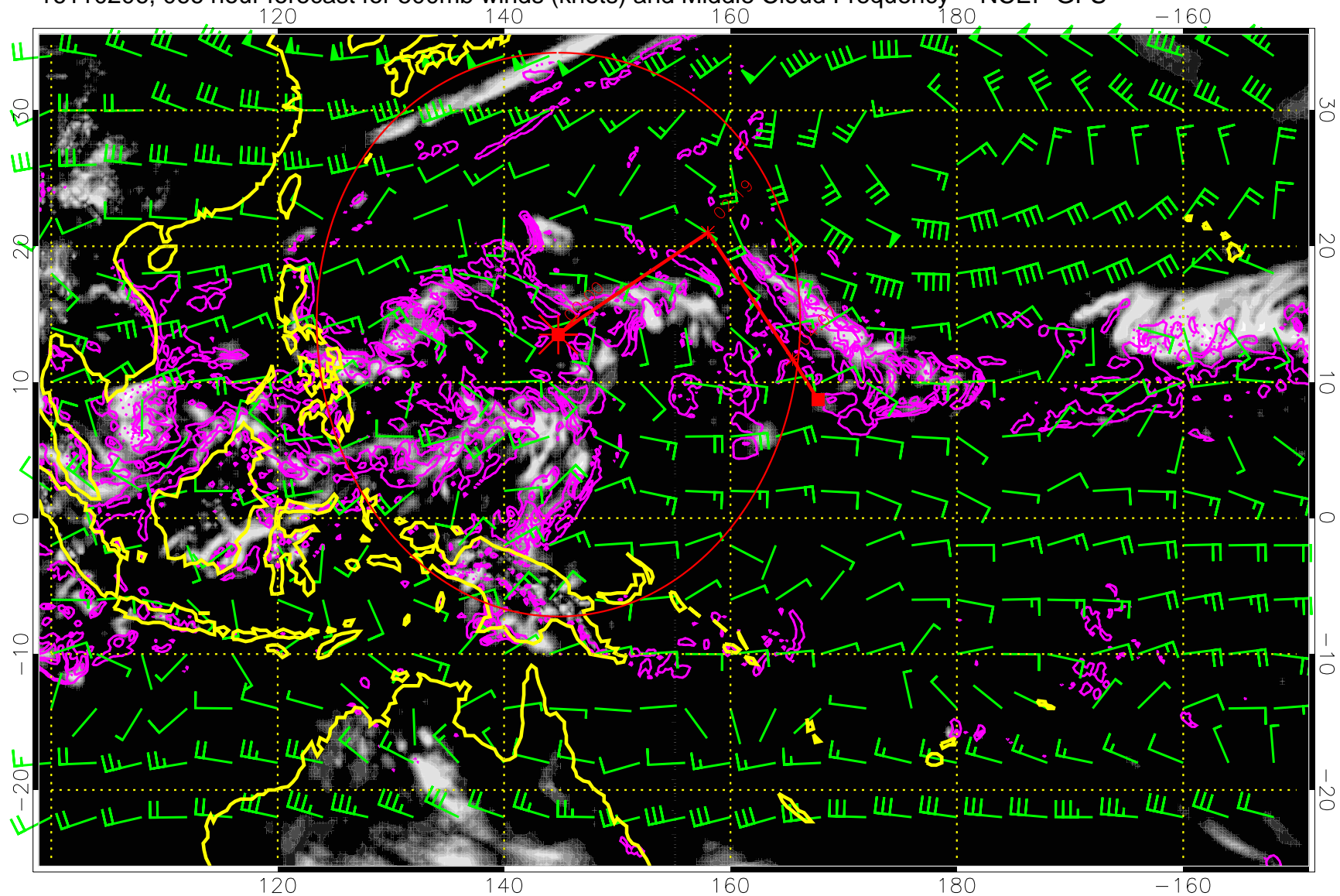


0.0 0.2 0.4 0.6 0.8 1.0
Middle Cloud Frequency

Precip (tot dot, conv sol) mm/day 40 mm/day contours, min 20

Range ring of 2304 km

16110206, 066 hour forecast for 500mb winds (knots) and Middle Cloud Frequency -- NCEP GFS

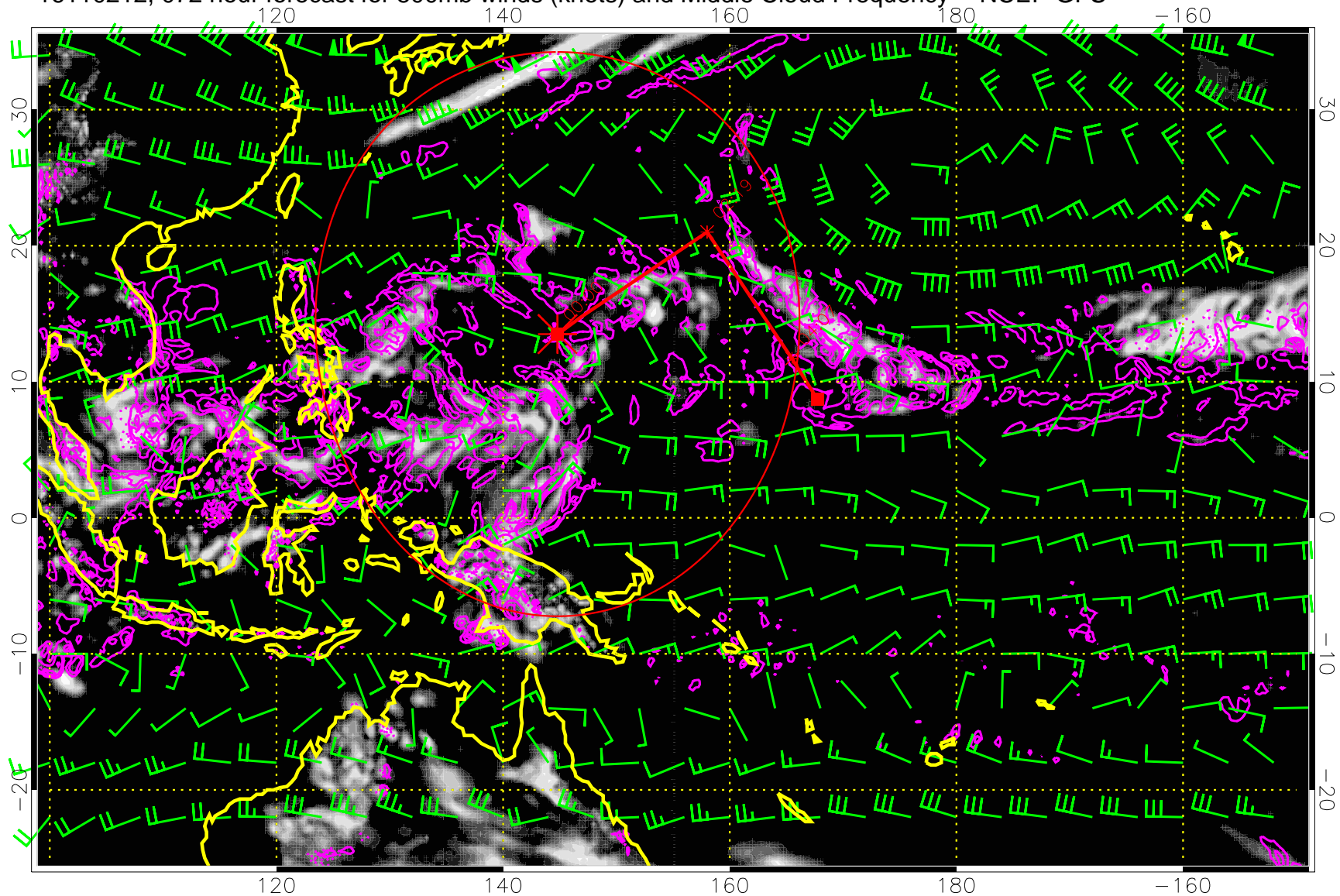


0.0 0.2 0.4 0.6 0.8 1.0
Middle Cloud Frequency

Precip (tot dot, conv sol) mm/day 40 mm/day contours, min 20

Range ring of 2304 km

16110212, 072 hour forecast for 500mb winds (knots) and Middle Cloud Frequency -- NCEP GFS

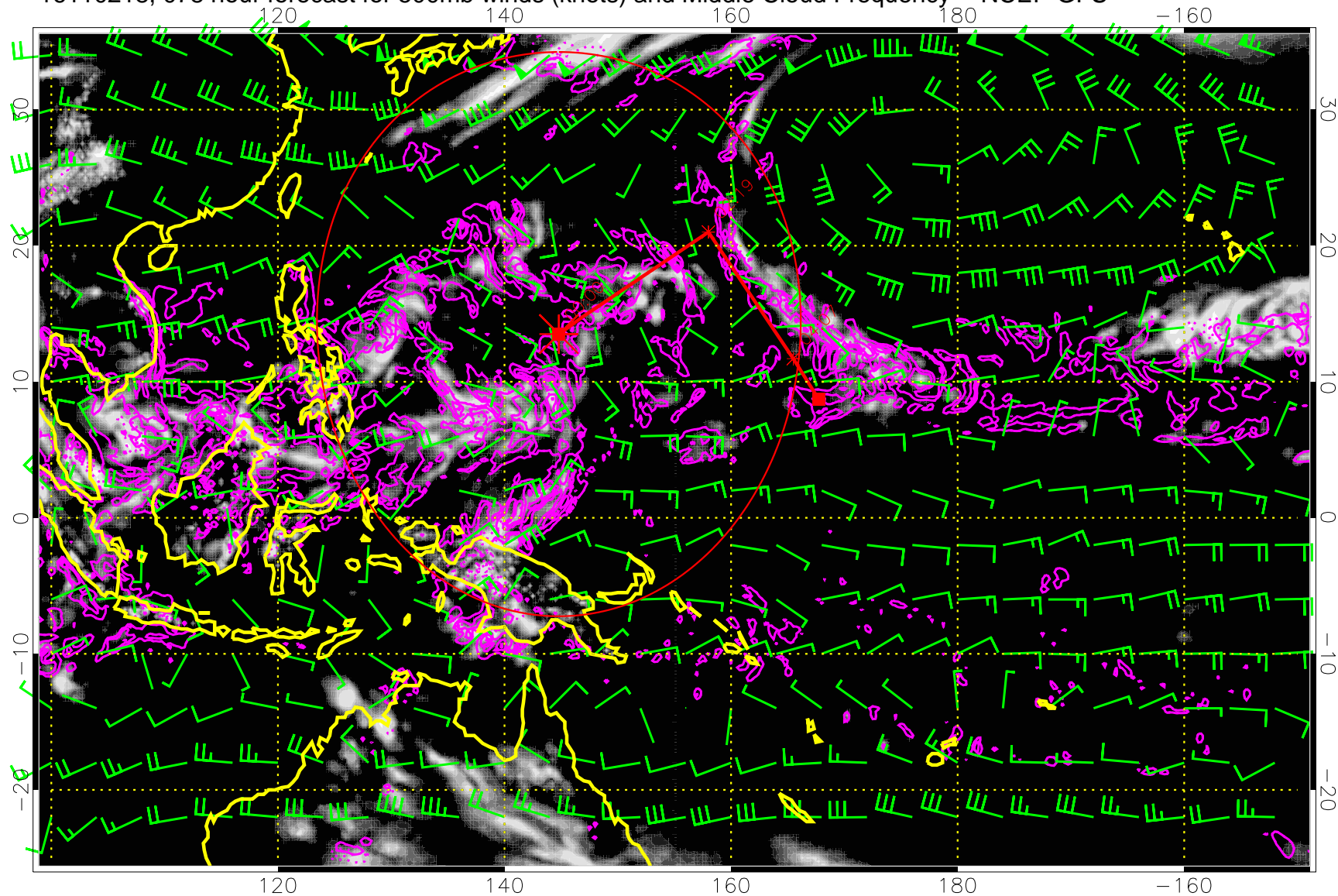


Middle Cloud Frequency

Precip (tot dot, conv sol) mm/day 40 mm/day contours, min 20

Range ring of 2304 km

16110218, 078 hour forecast for 500mb winds (knots) and Middle Cloud Frequency -- NCEP GFS

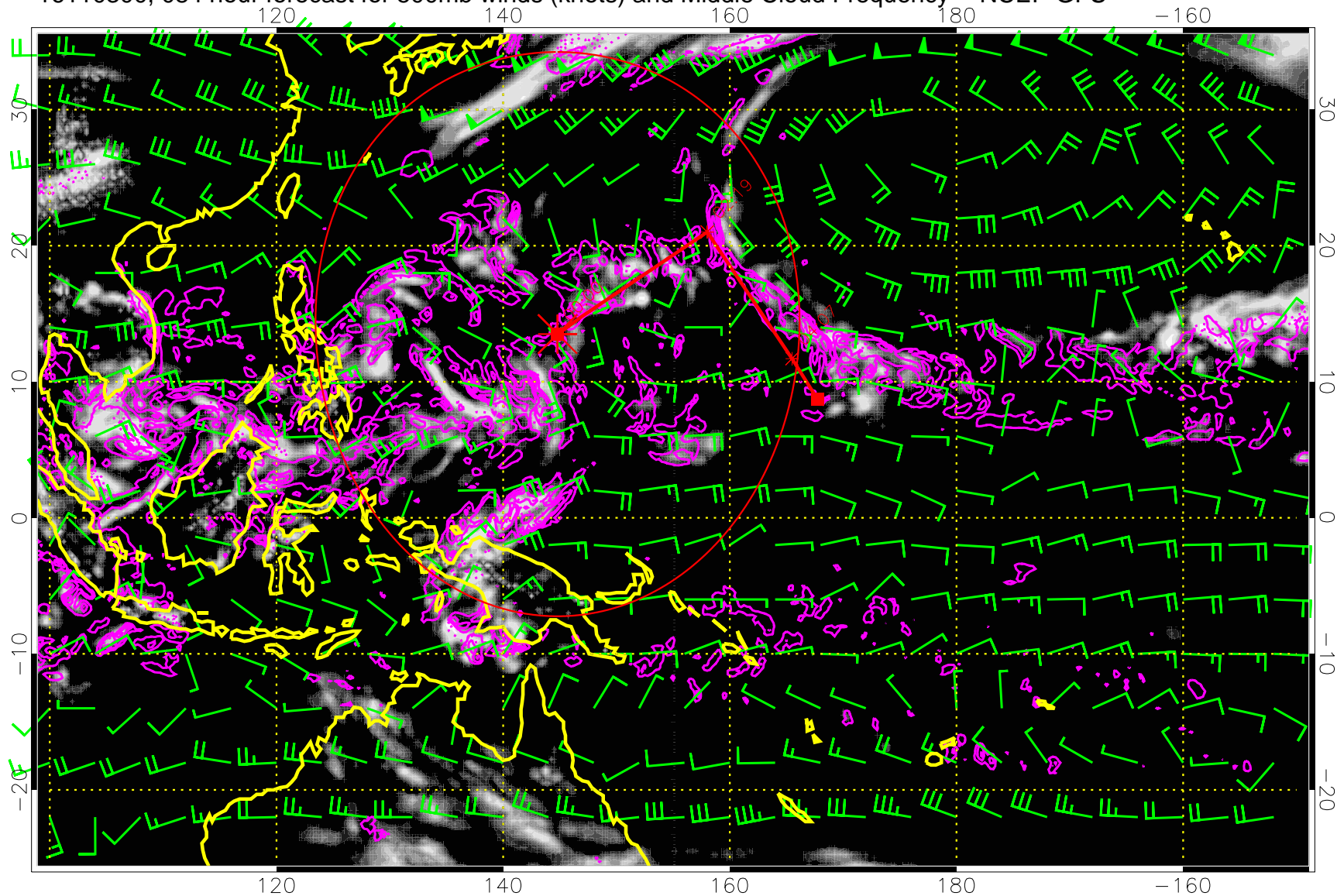


0.0 0.2 0.4 0.6 0.8 1.0
Middle Cloud Frequency

Precip (tot dot, conv sol) mm/day 40 mm/day contours, min 20

Range ring of 2304 km

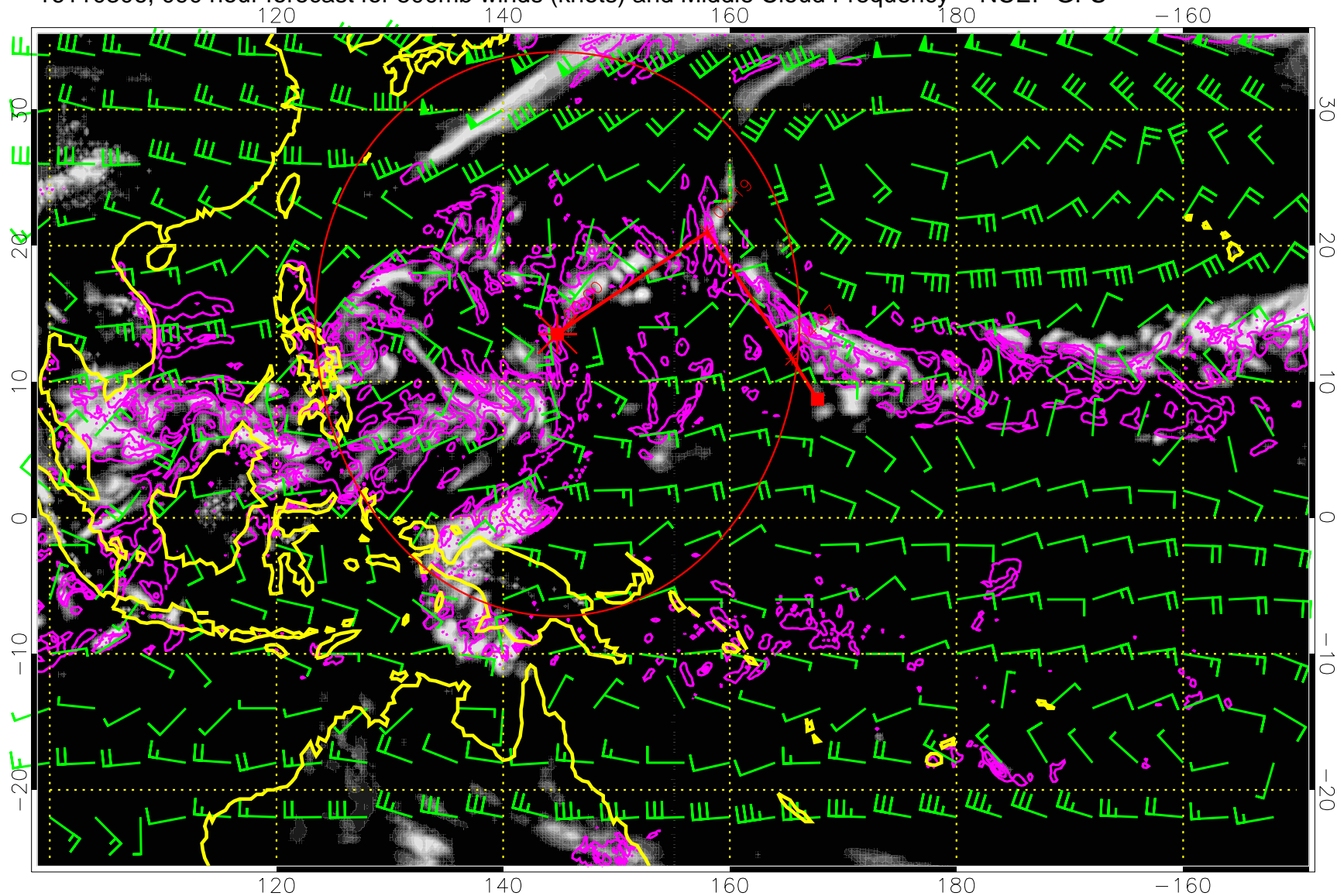
16110300, 084 hour forecast for 500mb winds (knots) and Middle Cloud Frequency -- NCEP GFS



Precip (tot dot, conv sol) mm/day 40 mm/day contours, min 20

Range ring of 2304 km

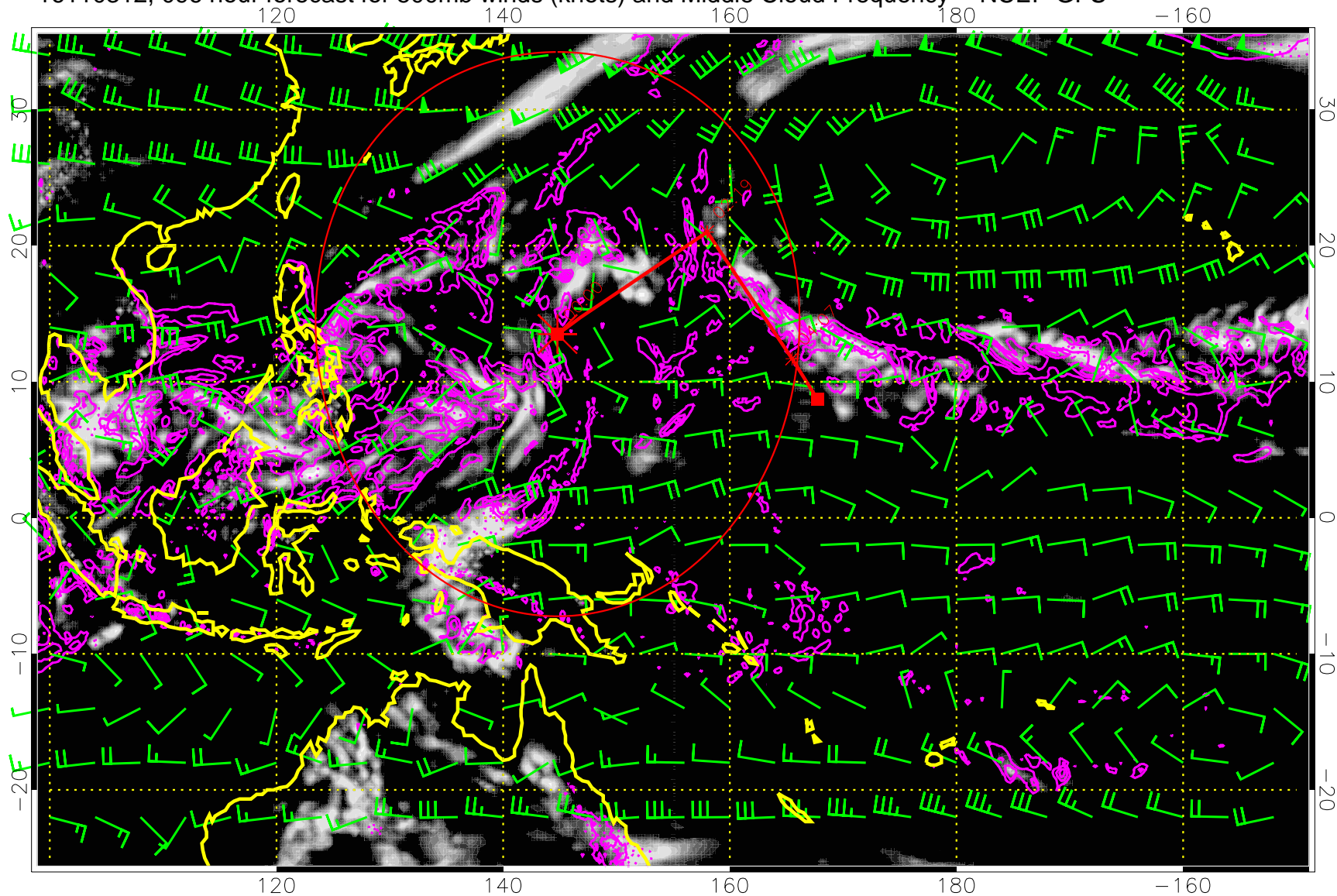
16110306, 090 hour forecast for 500mb winds (knots) and Middle Cloud Frequency -- NCEP GFS



Precip (tot dot, conv sol) mm/day 40 mm/day contours, min 20

Range ring of 2304 km

16110312, 096 hour forecast for 500mb winds (knots) and Middle Cloud Frequency -- NCEP GFS

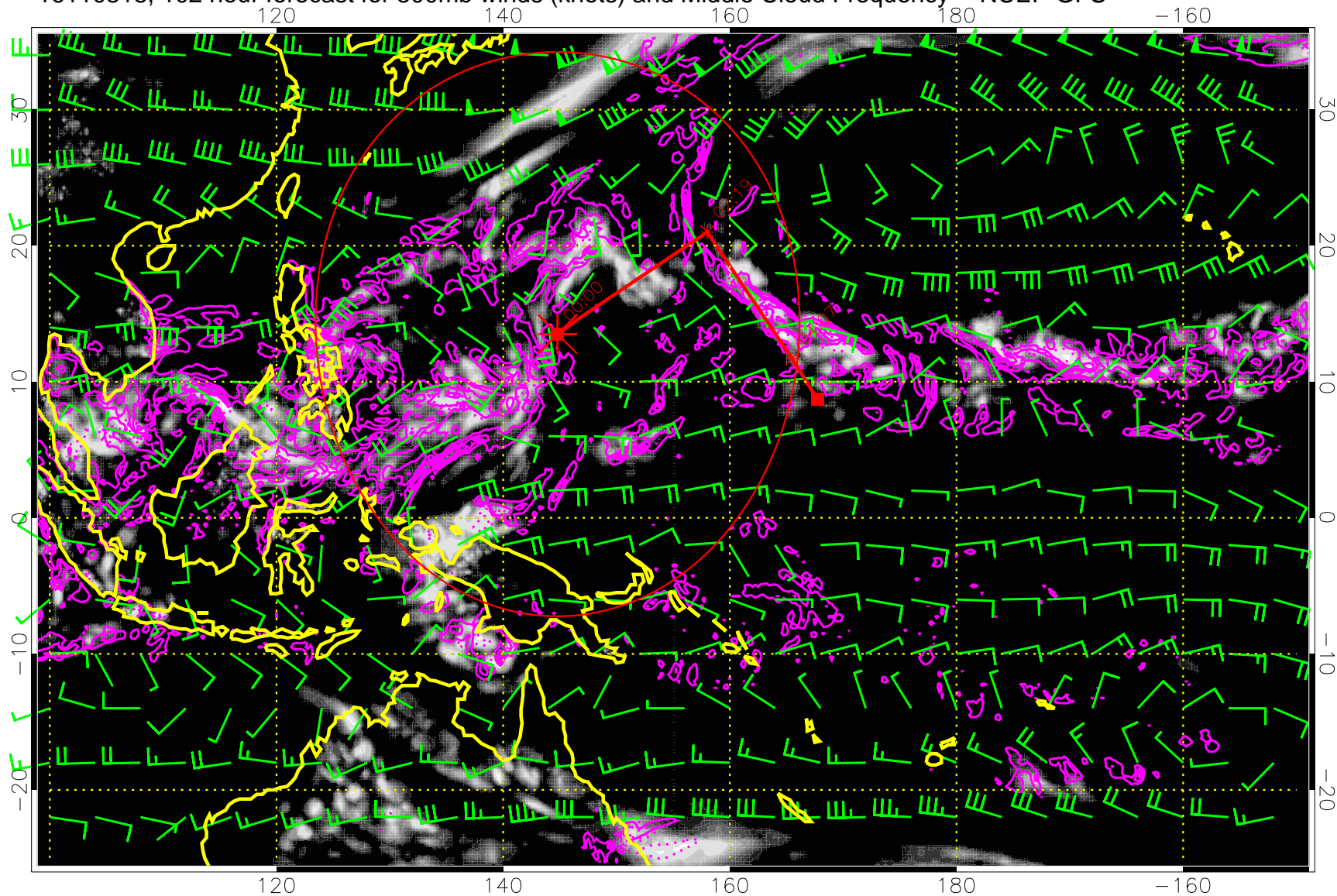


Middle Cloud Frequency

Precip (tot dot, conv sol) mm/day 40 mm/day contours, min 20

Range ring of 2304 km

16110318, 102 hour forecast for 500mb winds (knots) and Middle Cloud Frequency -- NCEP GFS

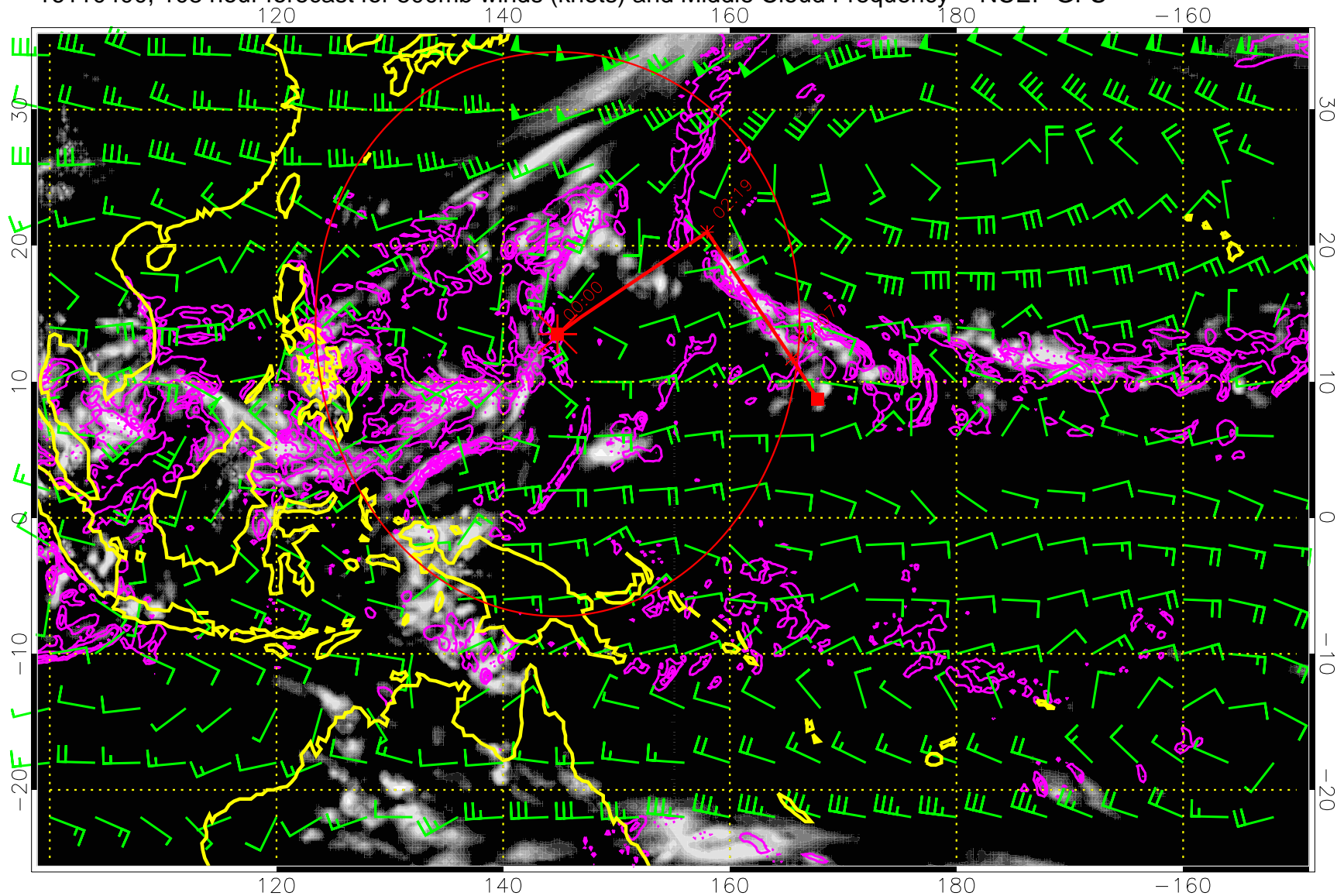


0.0 0.2 0.4 0.6 0.8 1.0
Middle Cloud Frequency

Precip (tot dot, conv sol) mm/day 40 mm/day contours, min 20

Range ring of 2304 km

16110400, 108 hour forecast for 500mb winds (knots) and Middle Cloud Frequency -- NCEP GFS

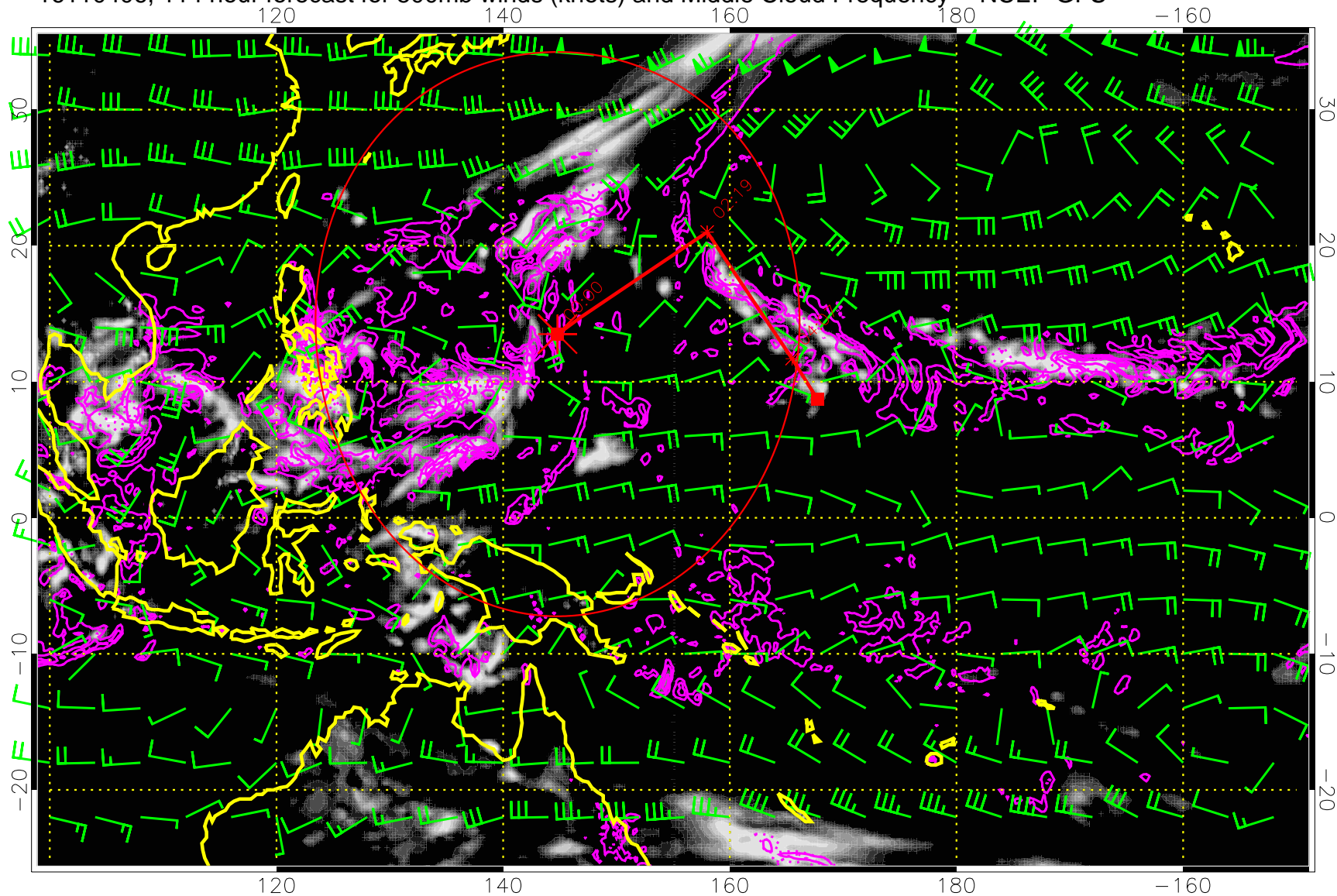


0.0 0.2 0.4 0.6 0.8 1.0
Middle Cloud Frequency

Precip (tot dot, conv sol) mm/day 40 mm/day contours, min 20

Range ring of 2304 km

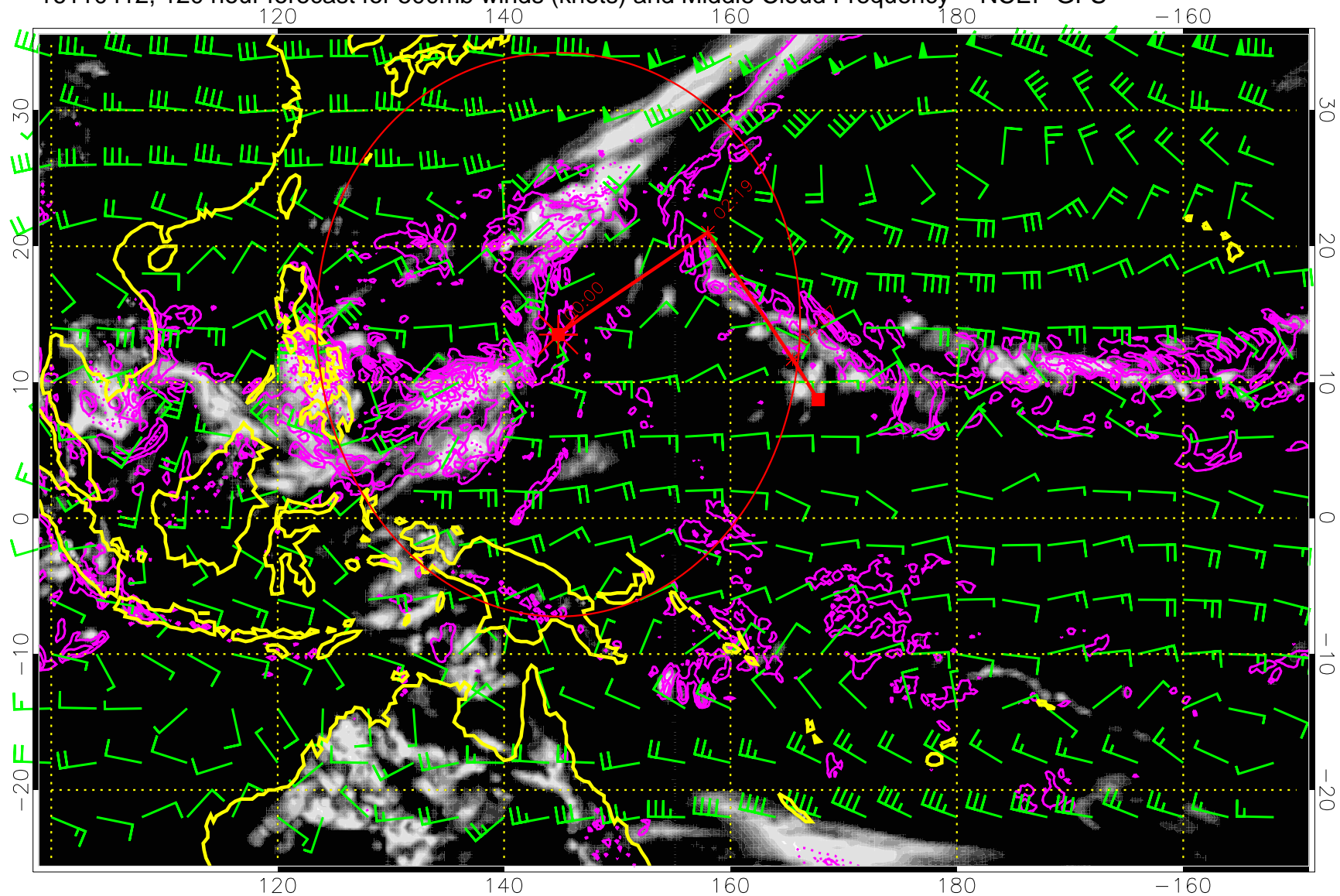
16110406, 114 hour forecast for 500mb winds (knots) and Middle Cloud Frequency -- NCEP GFS



Precip (tot dot, conv sol) mm/day 40 mm/day contours, min 20

Range ring of 2304 km

16110412, 120 hour forecast for 500mb winds (knots) and Middle Cloud Frequency -- NCEP GFS



0.0 0.2 0.4 0.6 0.8 1.0
Middle Cloud Frequency

Precip (tot dot, conv sol) mm/day 40 mm/day contours, min 20

Range ring of 2304 km