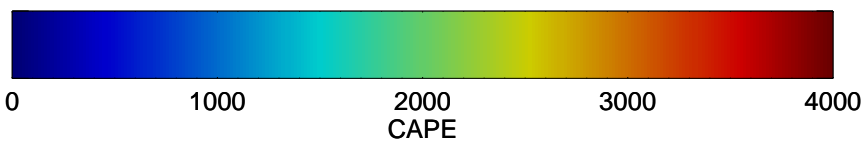
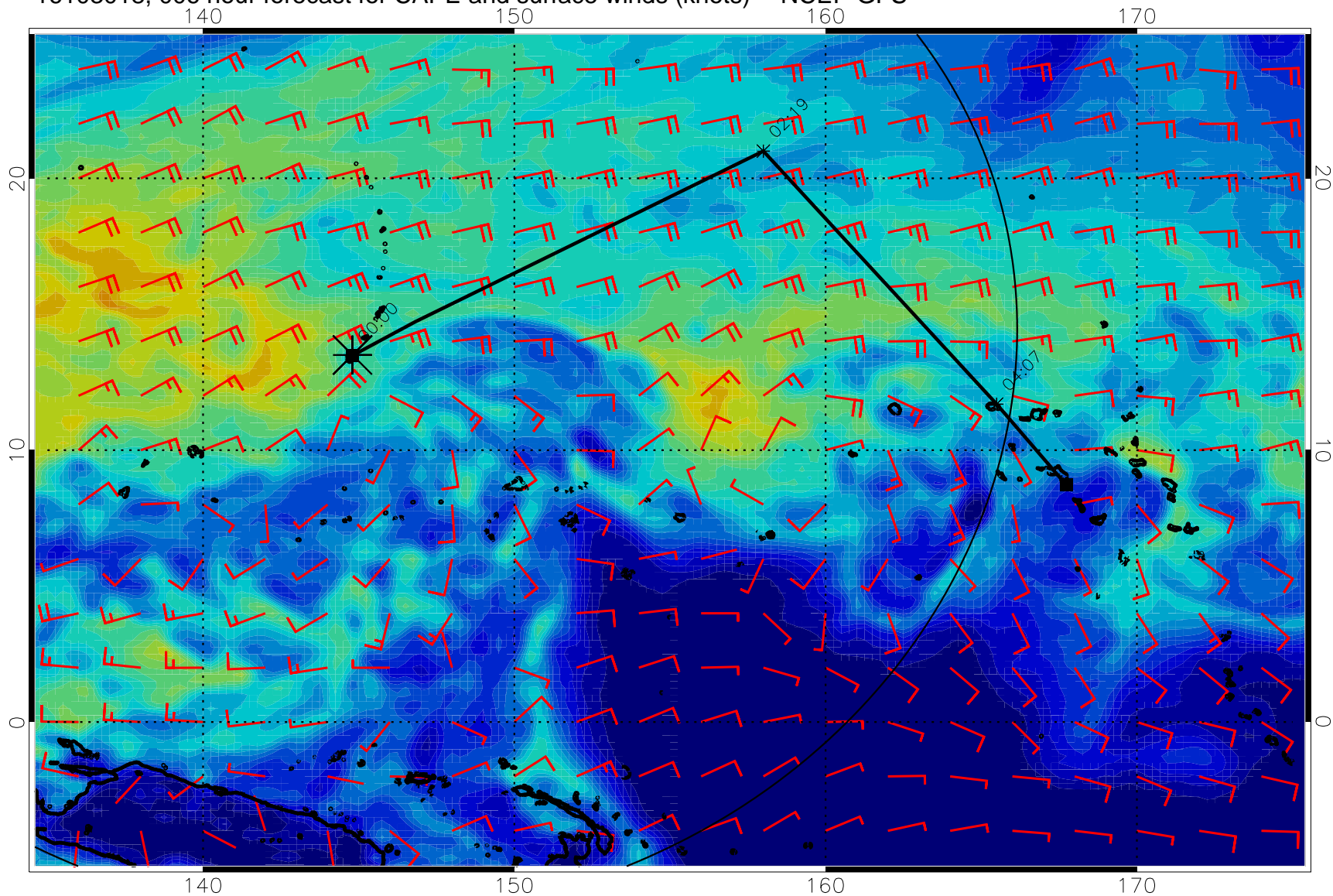
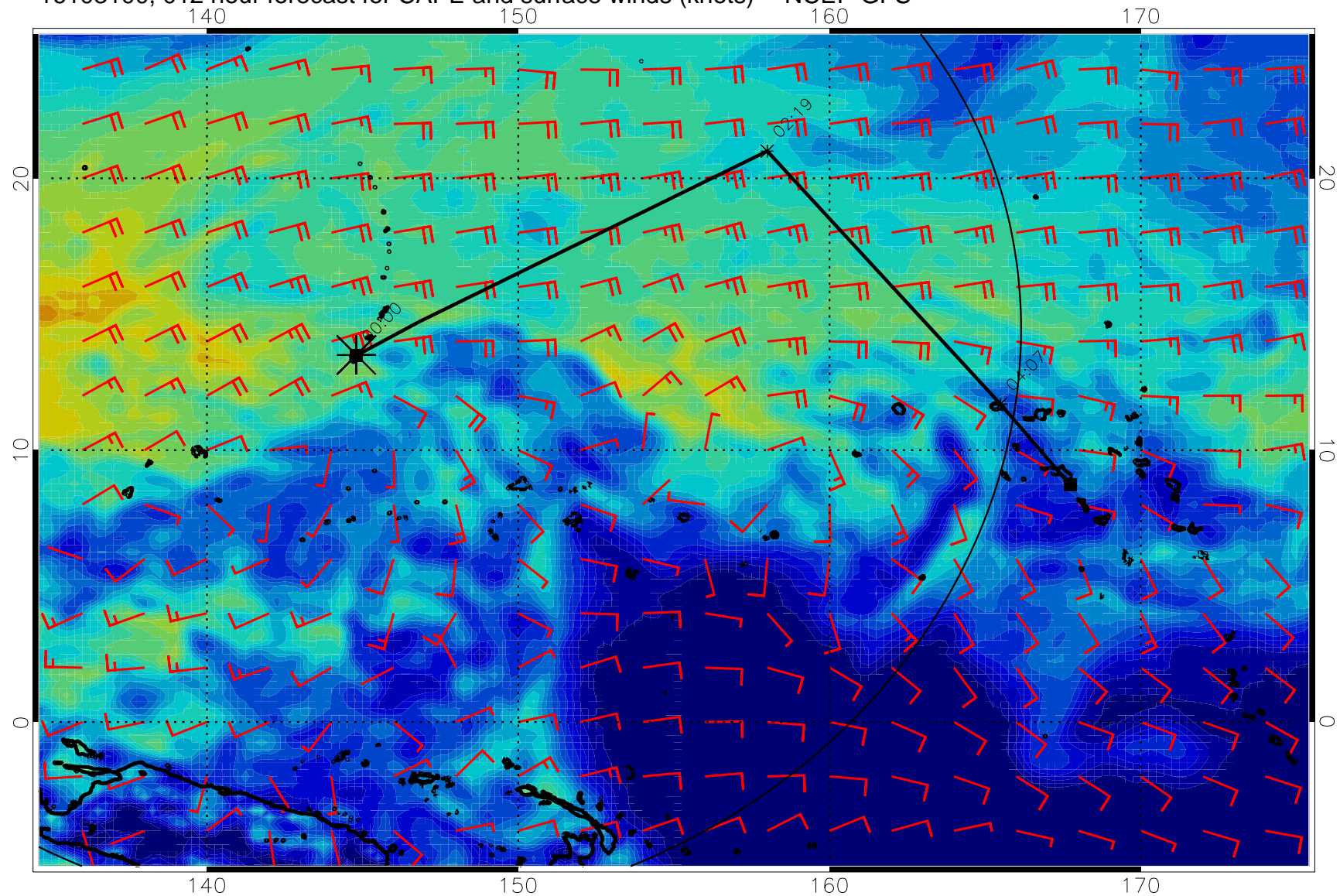


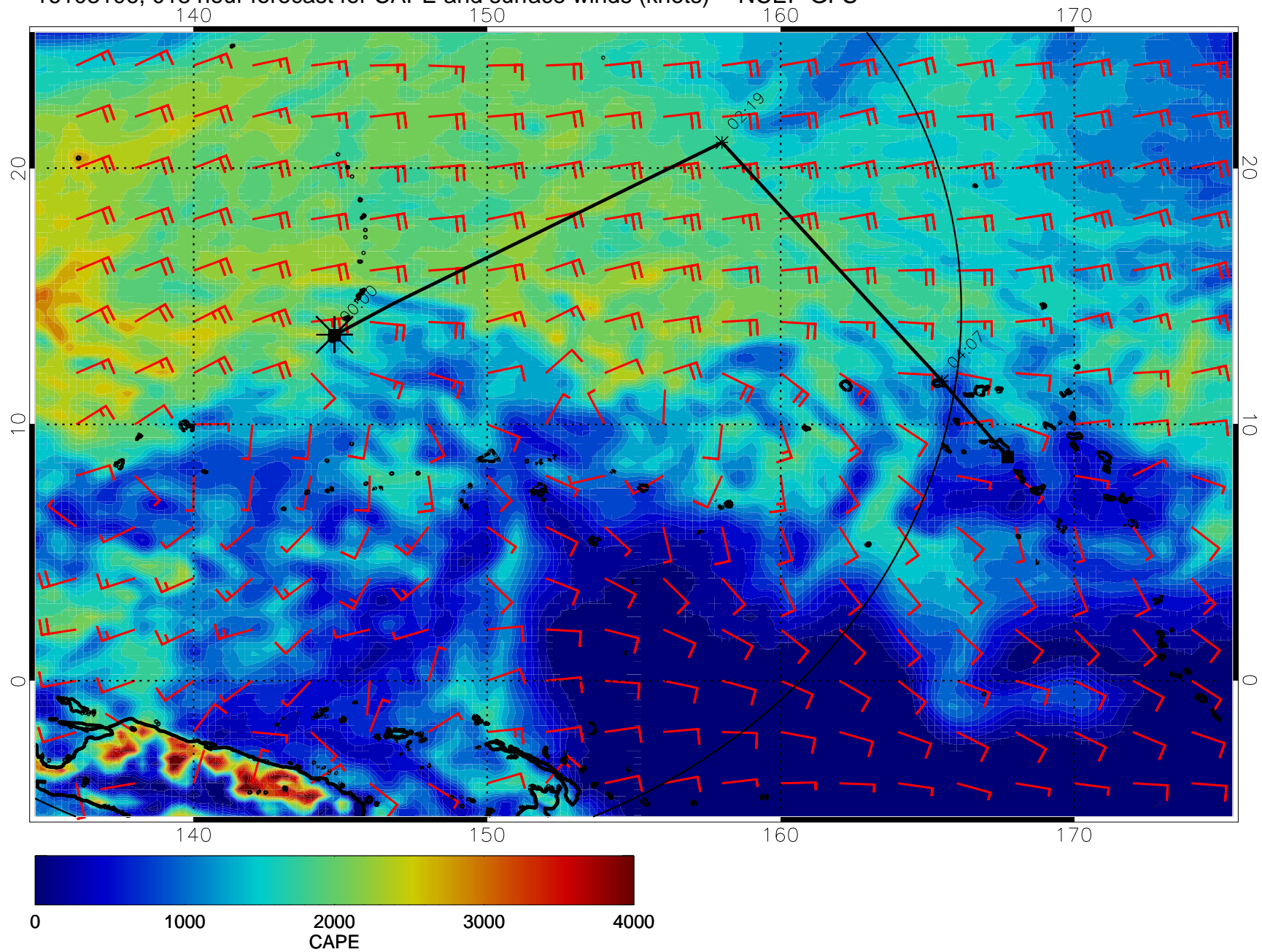
16103018, 006 hour forecast for CAPE and surface winds (knots) -- NCEP GFS



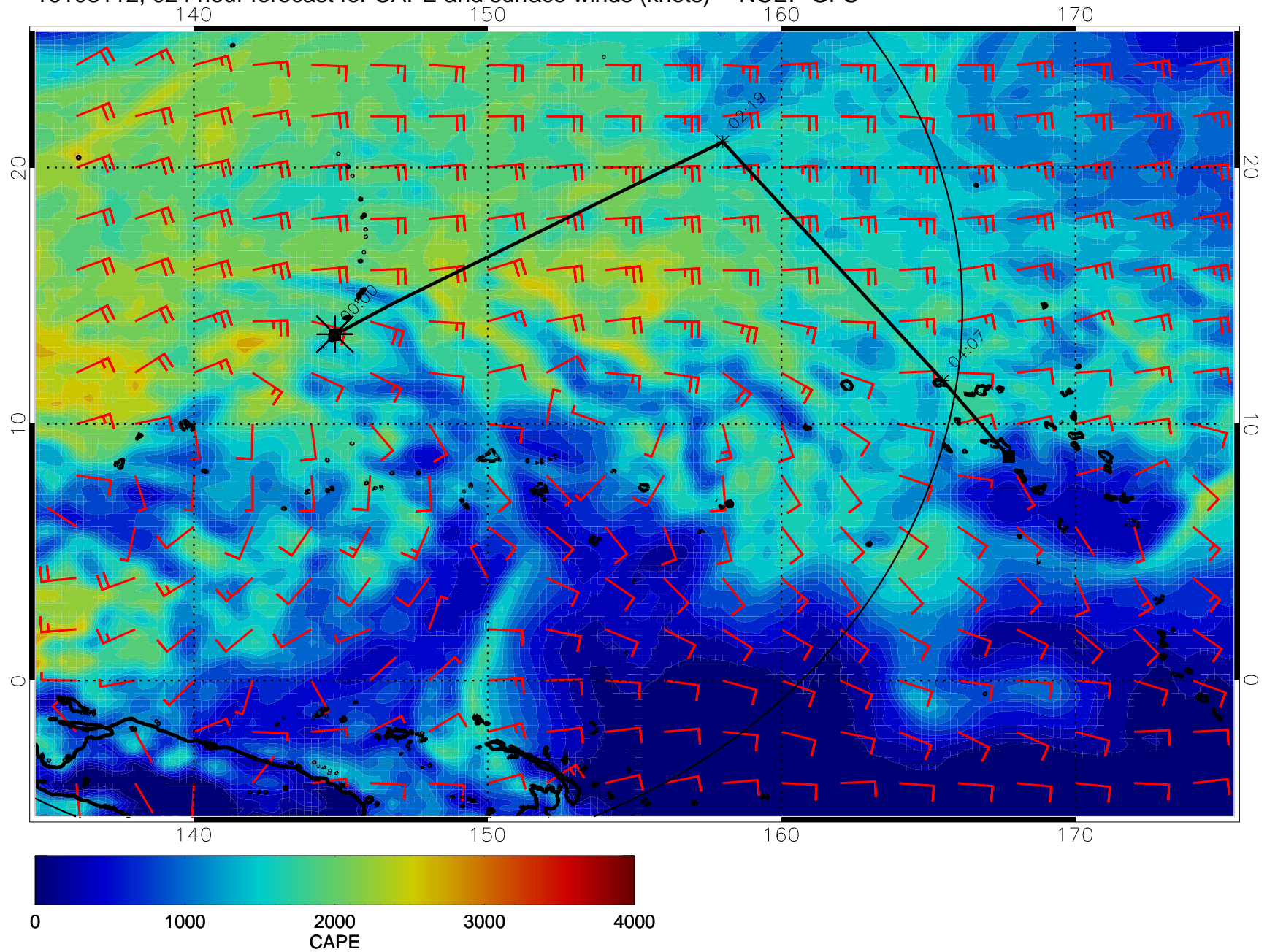
16103100, 012 hour forecast for CAPE and surface winds (knots) -- NCEP GFS



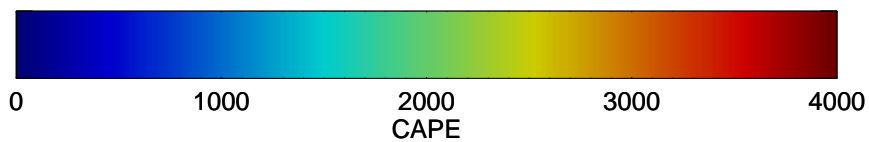
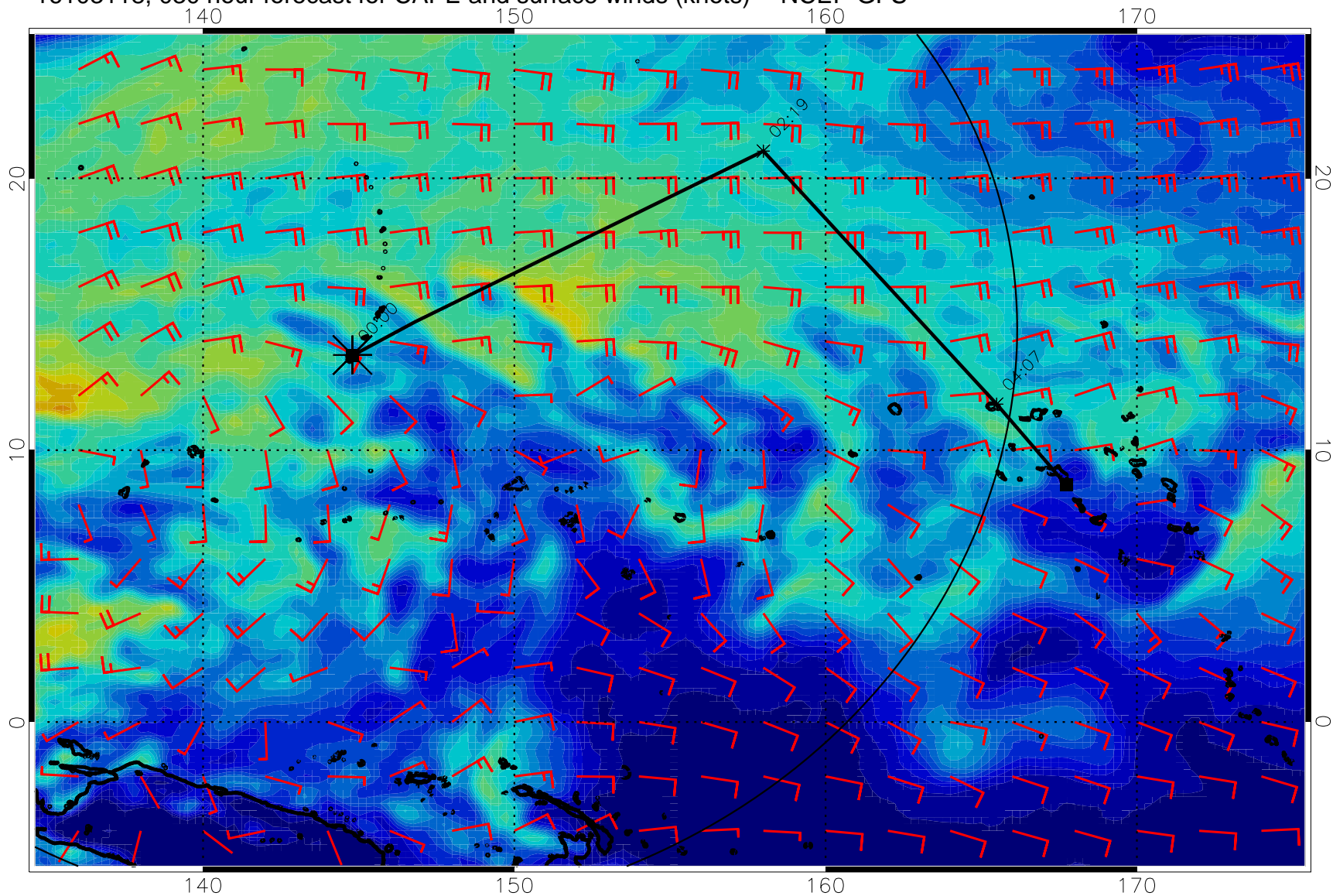
16103106, 018 hour forecast for CAPE and surface winds (knots) -- NCEP GFS



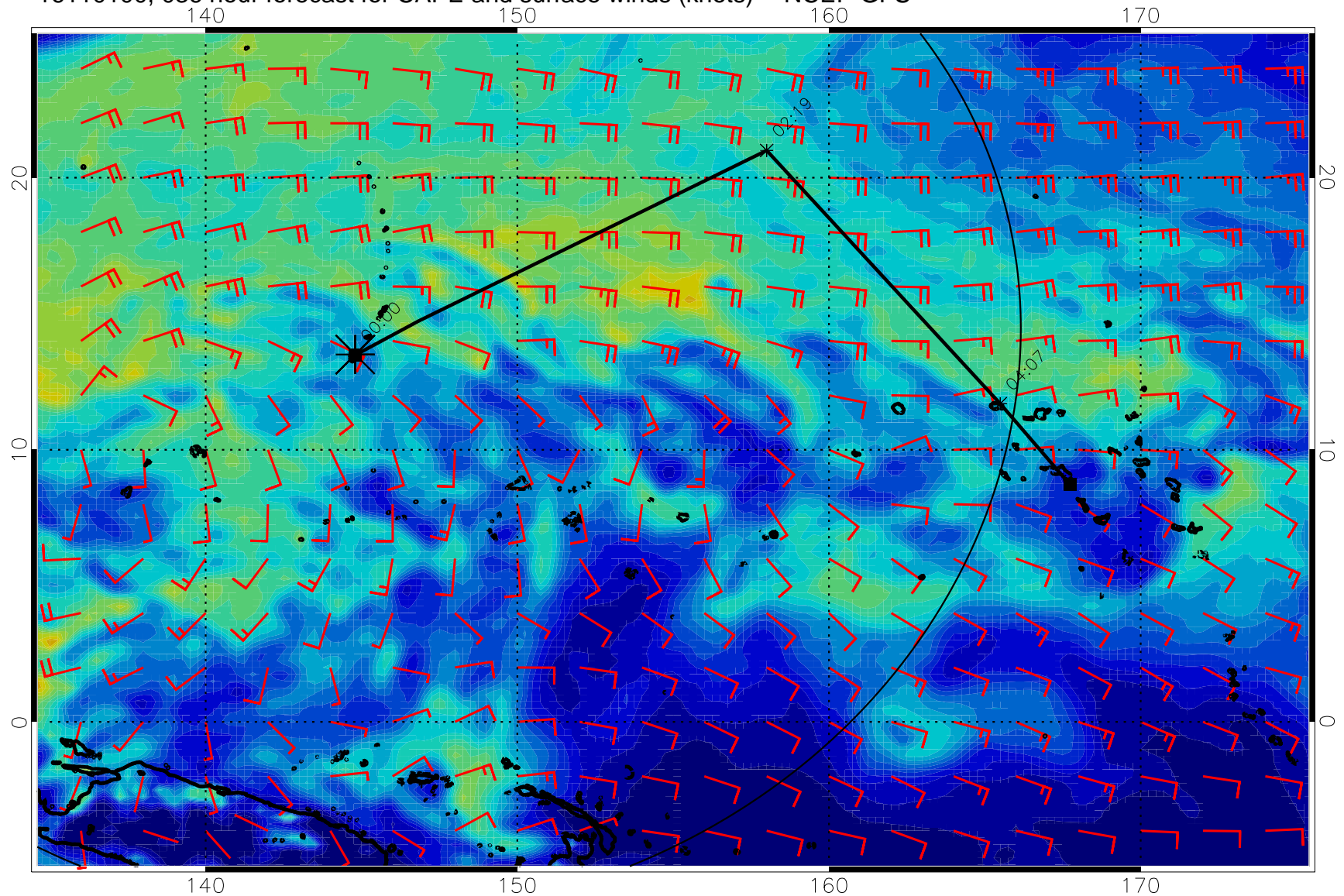
16103112, 024 hour forecast for CAPE and surface winds (knots) -- NCEP GFS



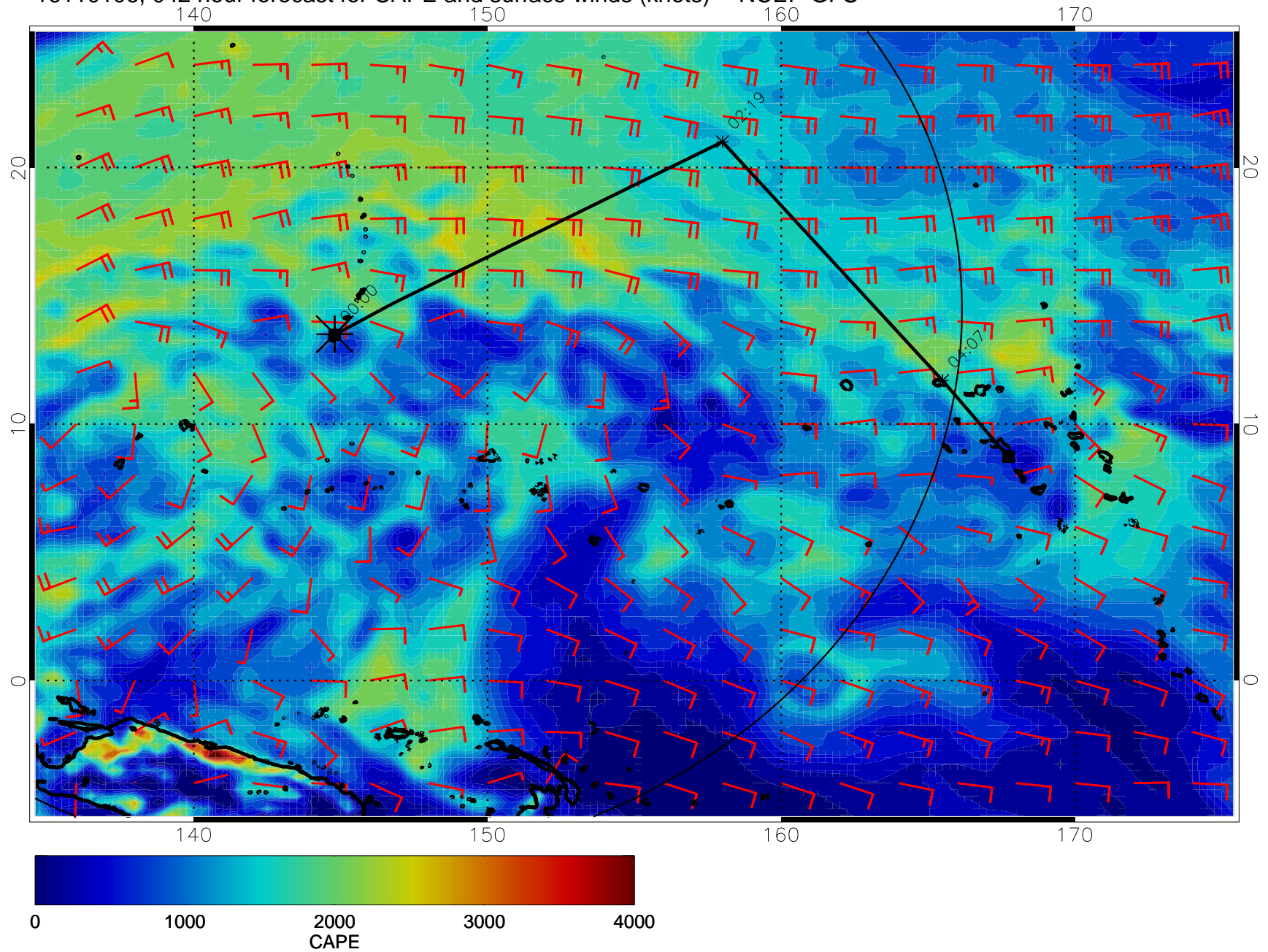
16103118, 030 hour forecast for CAPE and surface winds (knots) -- NCEP GFS



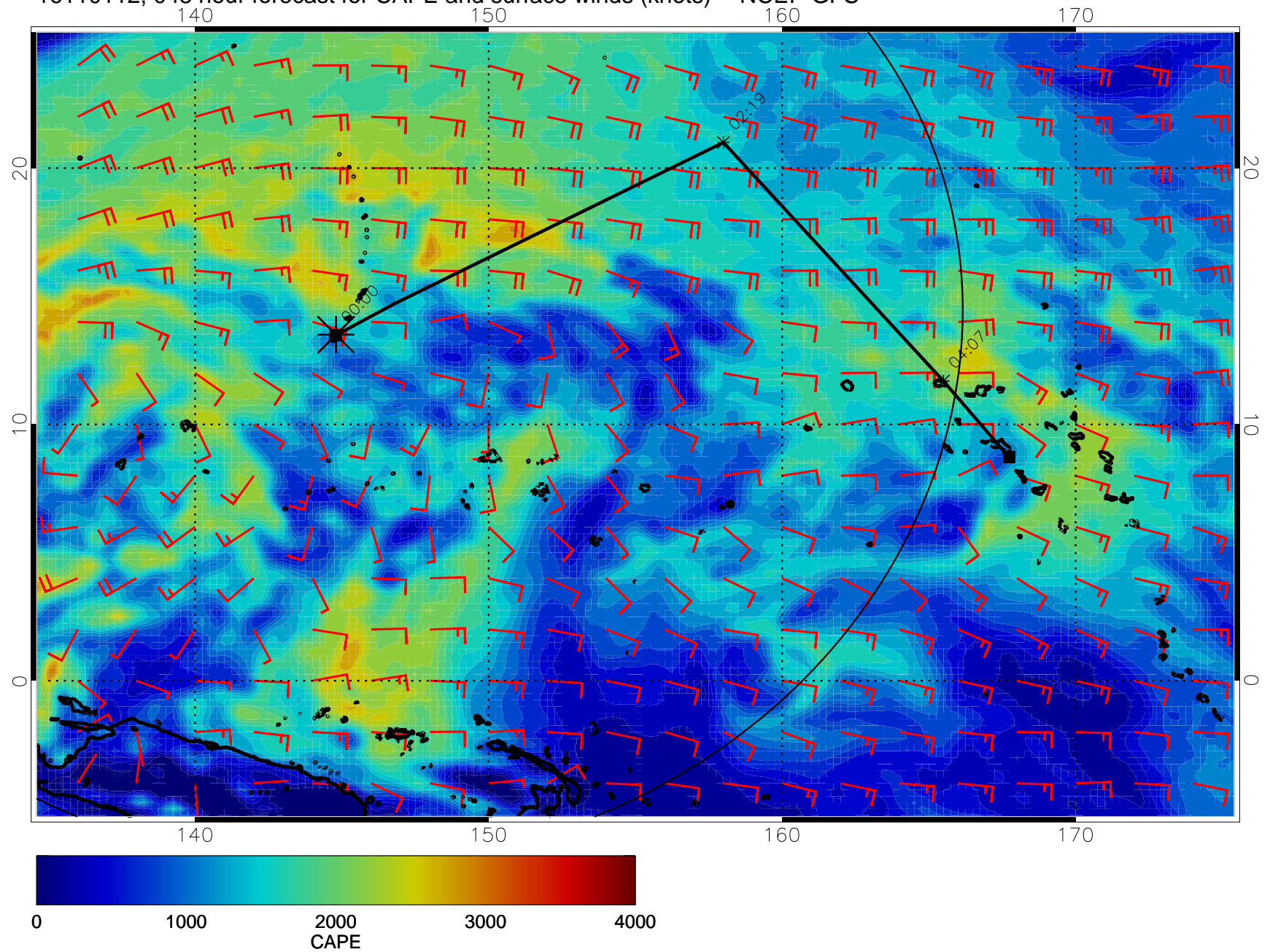
16110100, 036 hour forecast for CAPE and surface winds (knots) -- NCEP GFS



16110106, 042 hour forecast for CAPE and surface winds (knots) -- NCEP GFS

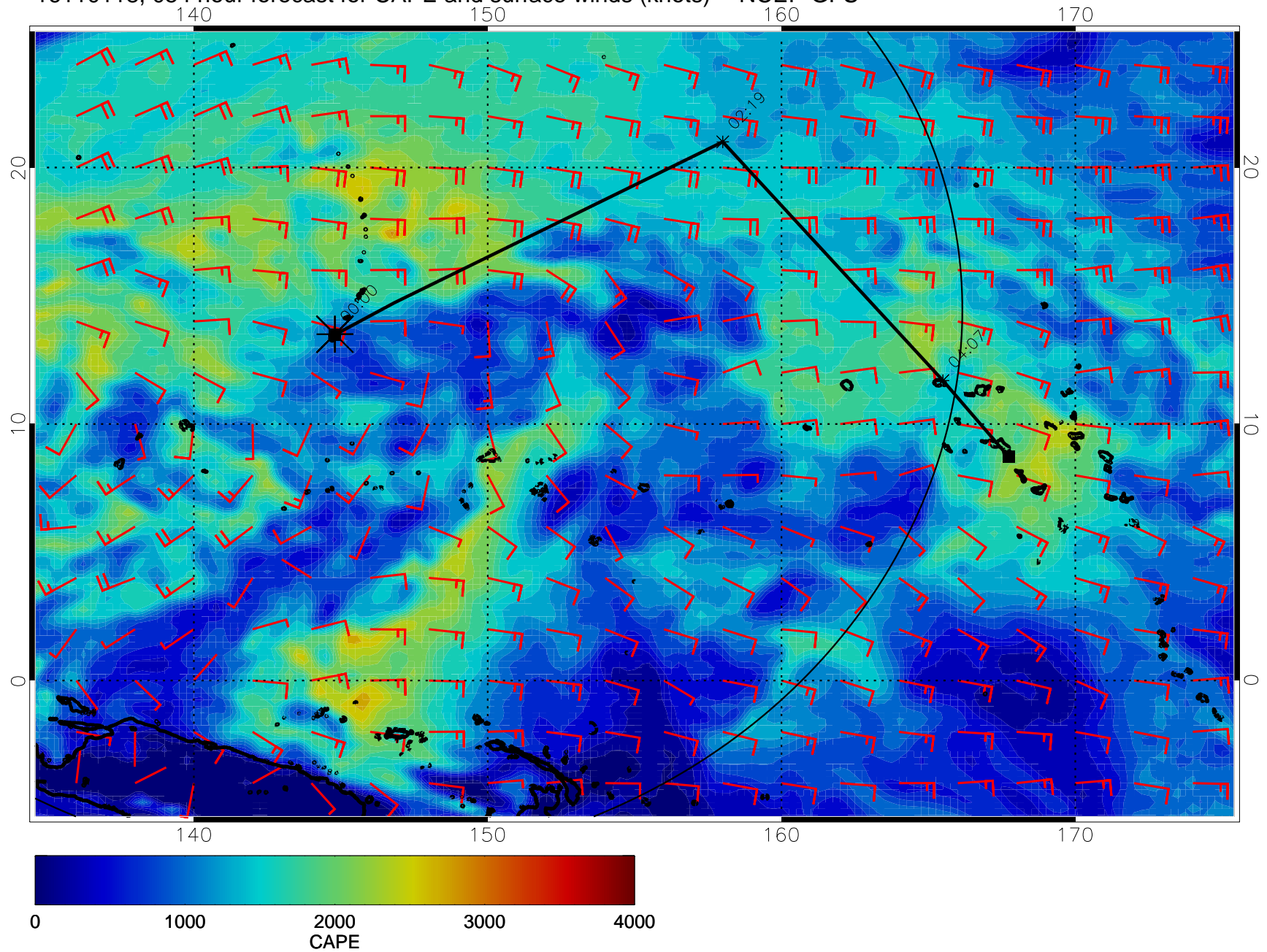


16110112, 048 hour forecast for CAPE and surface winds (knots) -- NCEP GFS

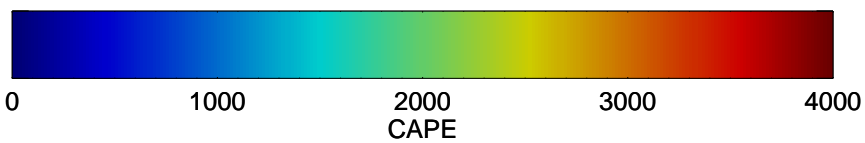
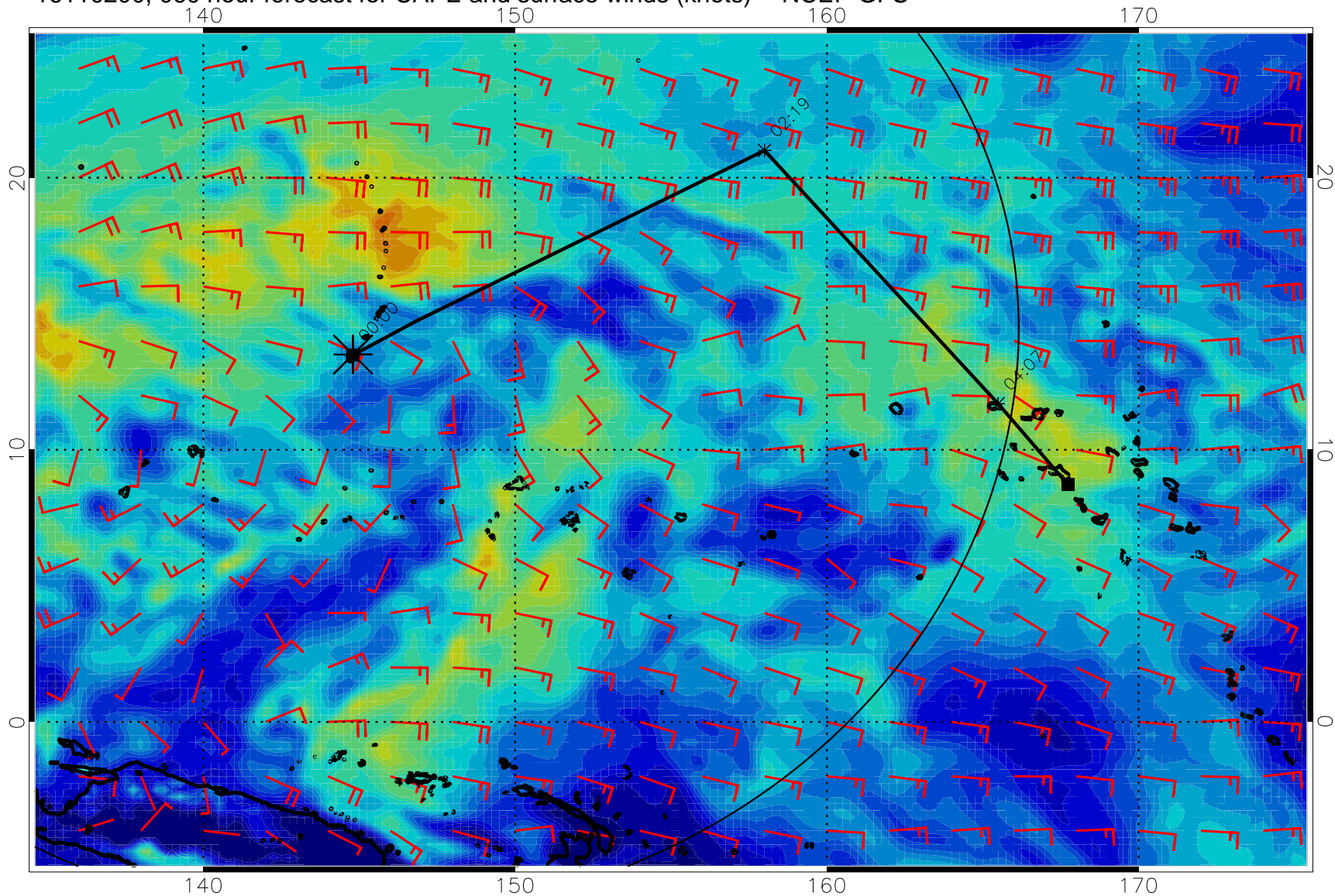




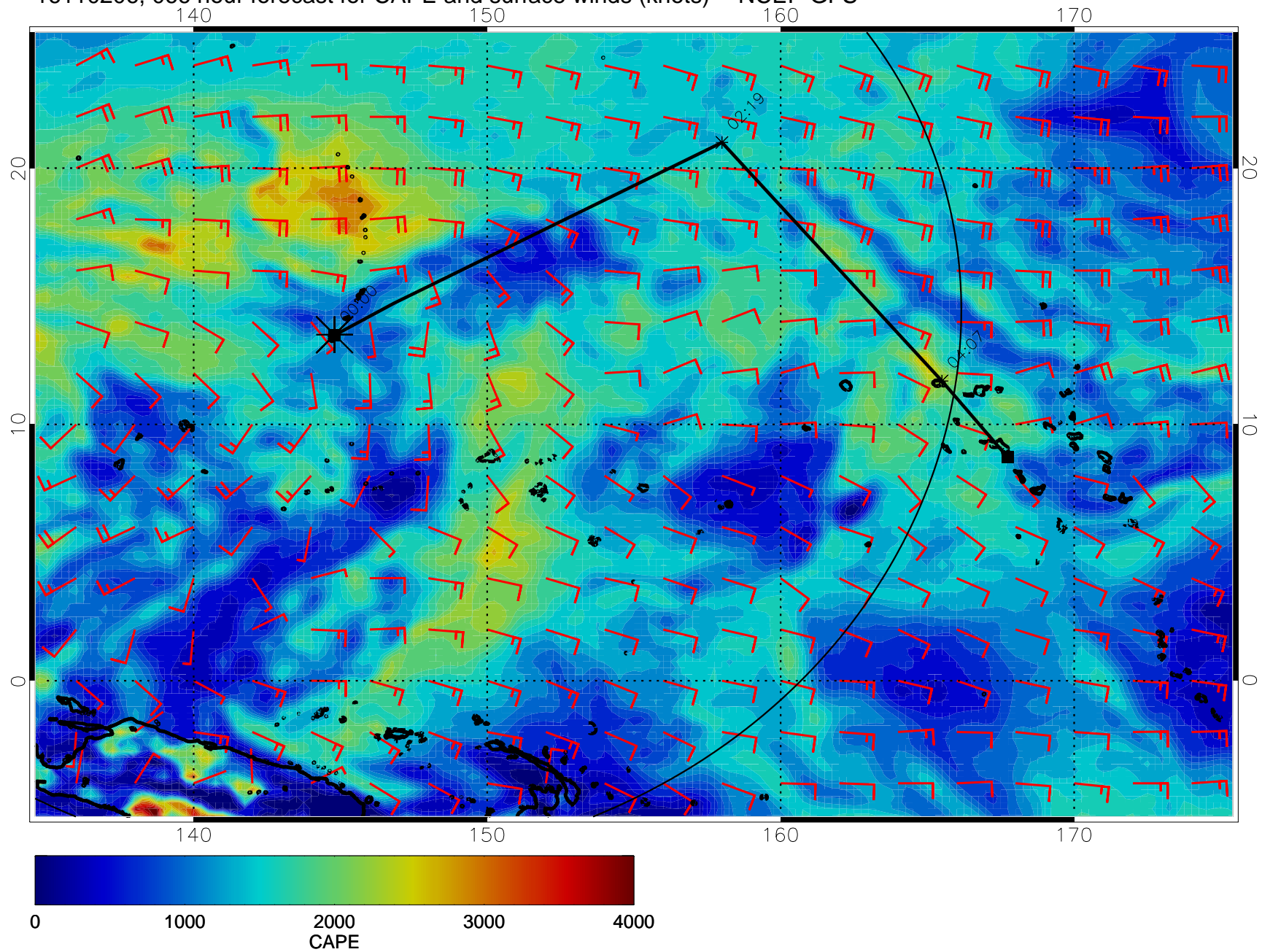
16110118, 054 hour forecast for CAPE and surface winds (knots) -- NCEP GFS



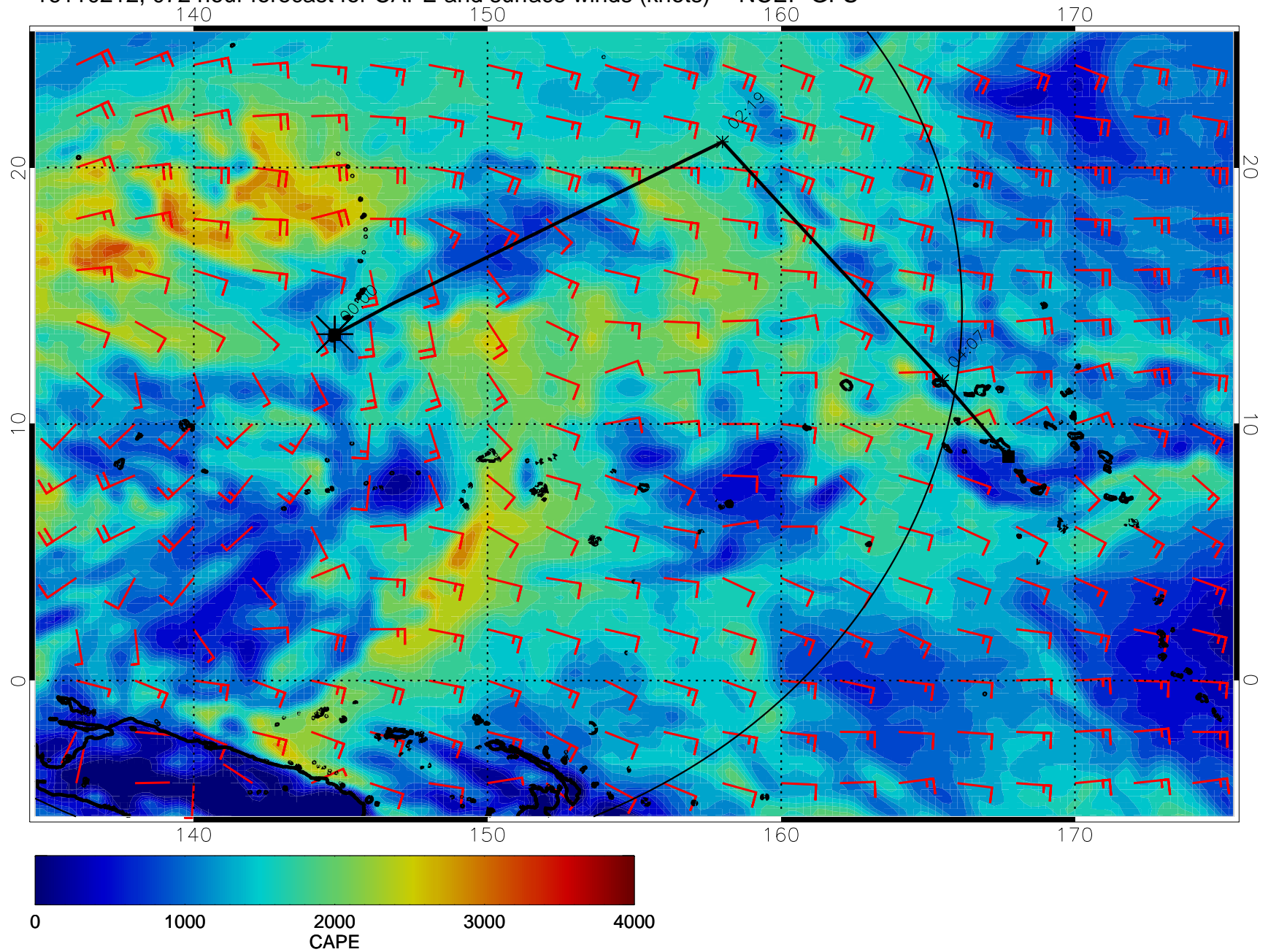
16110200, 060 hour forecast for CAPE and surface winds (knots) -- NCEP GFS



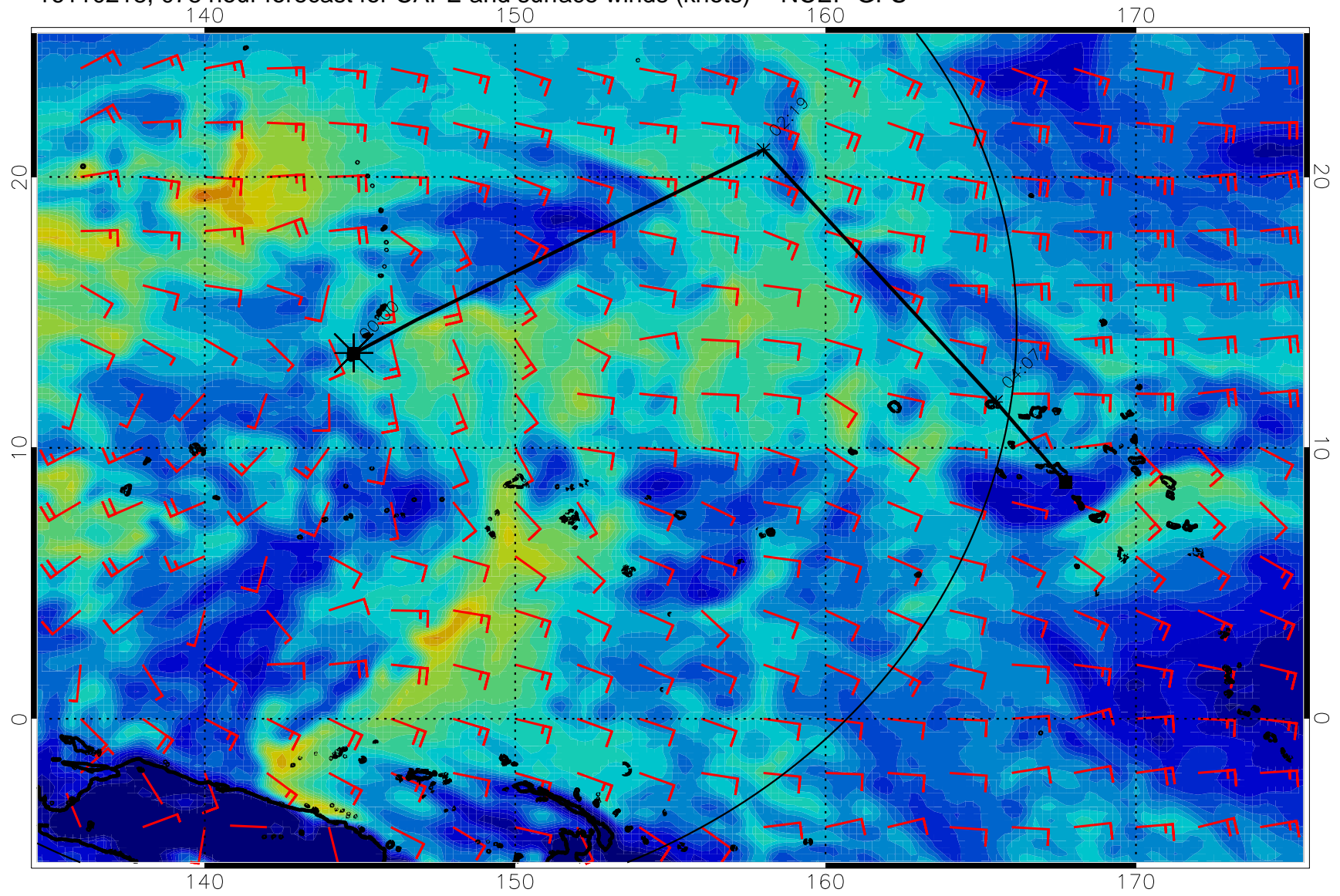
16110206, 066 hour forecast for CAPE and surface winds (knots) -- NCEP GFS



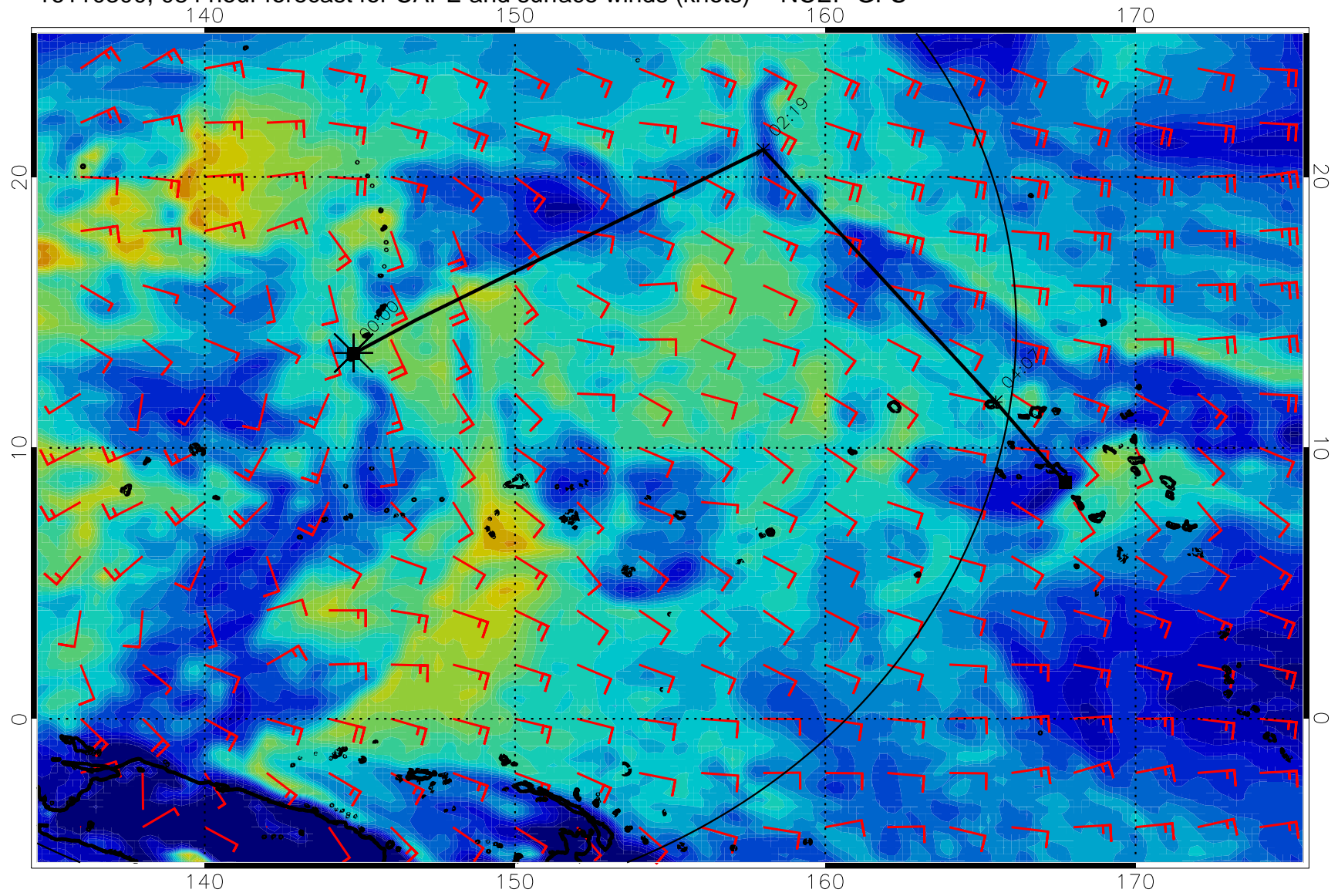
16110212, 072 hour forecast for CAPE and surface winds (knots) -- NCEP GFS



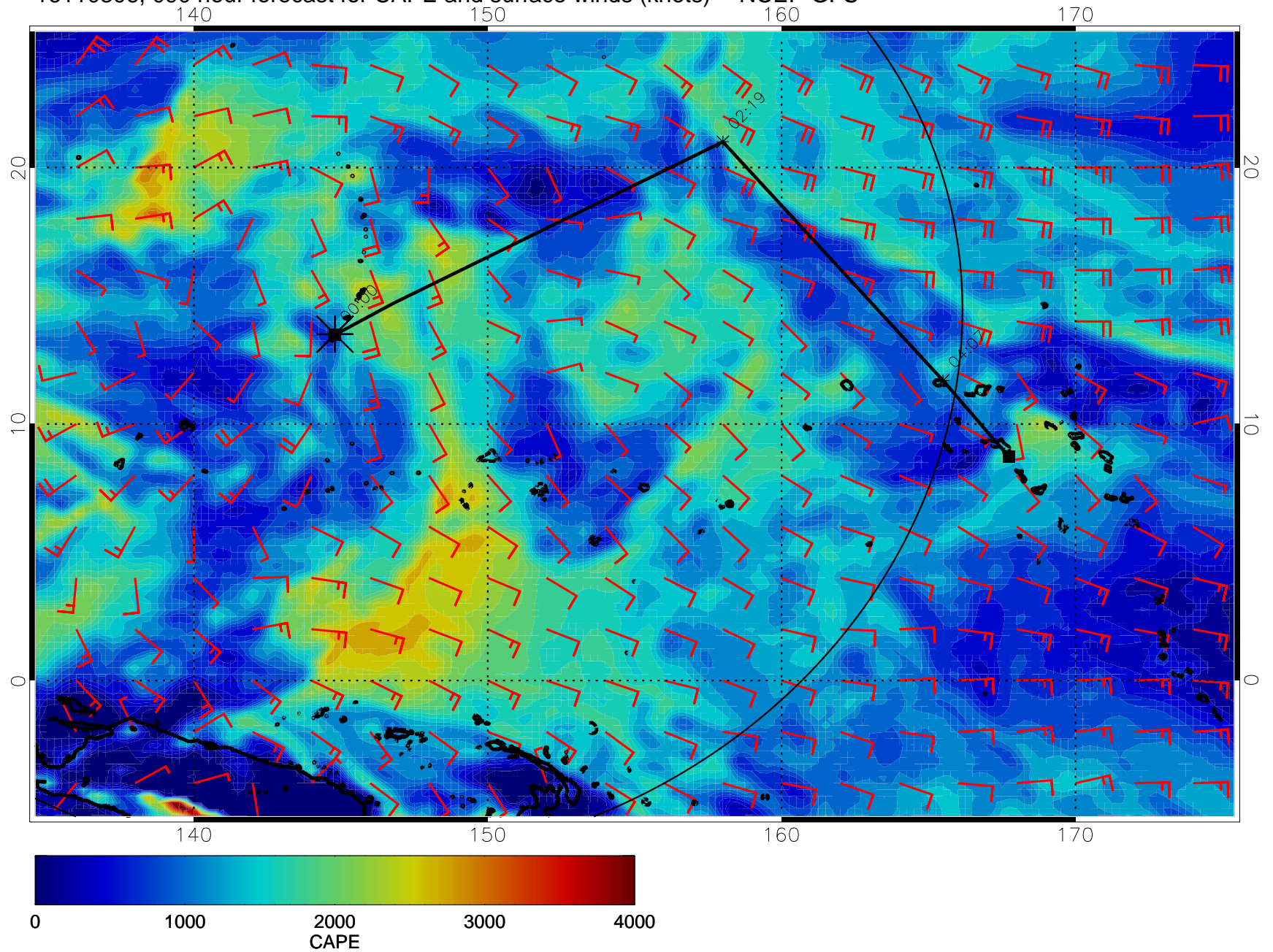
16110218, 078 hour forecast for CAPE and surface winds (knots) -- NCEP GFS



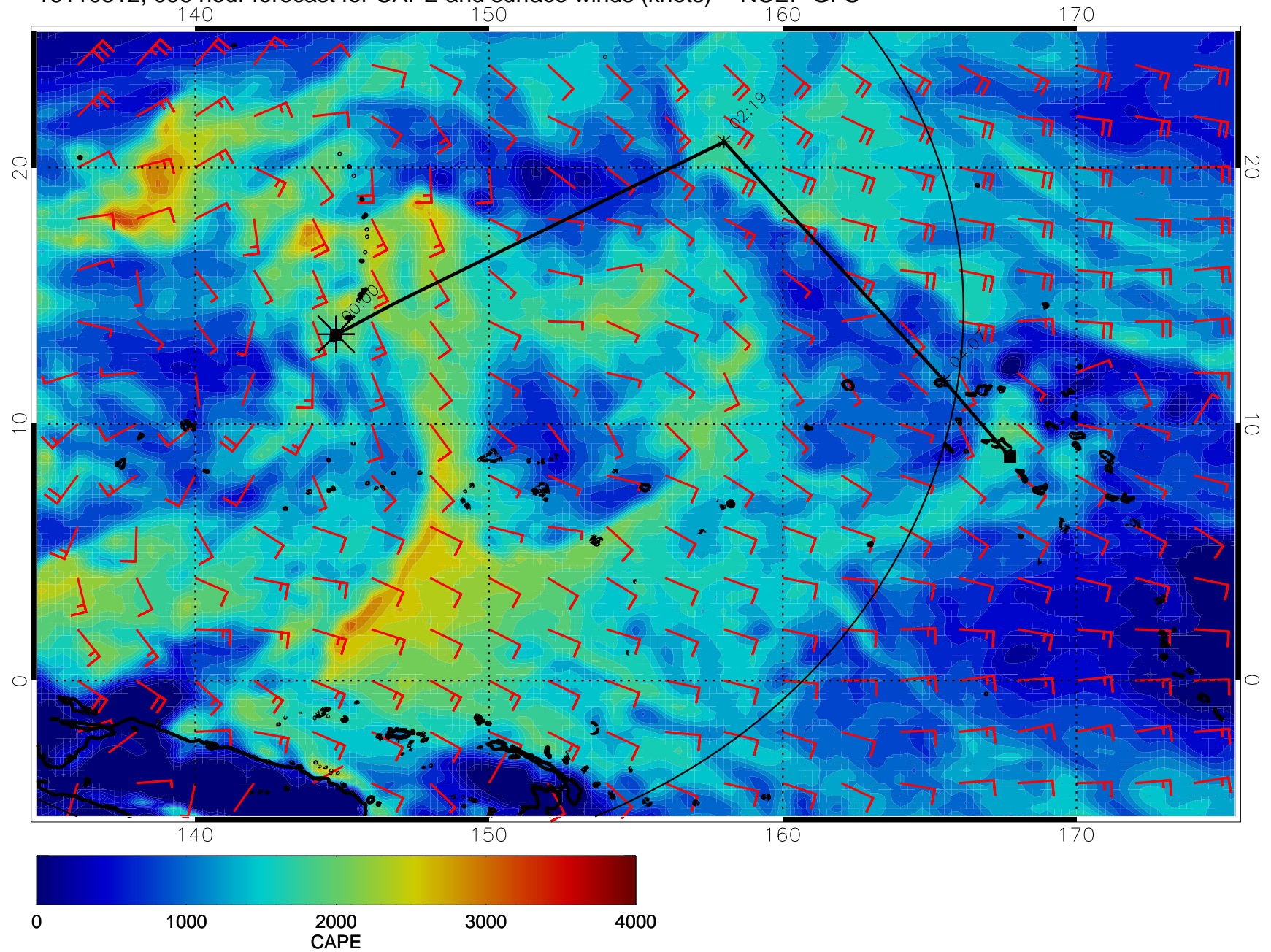
16110300, 084 hour forecast for CAPE and surface winds (knots) -- NCEP GFS



16110306, 090 hour forecast for CAPE and surface winds (knots) -- NCEP GFS

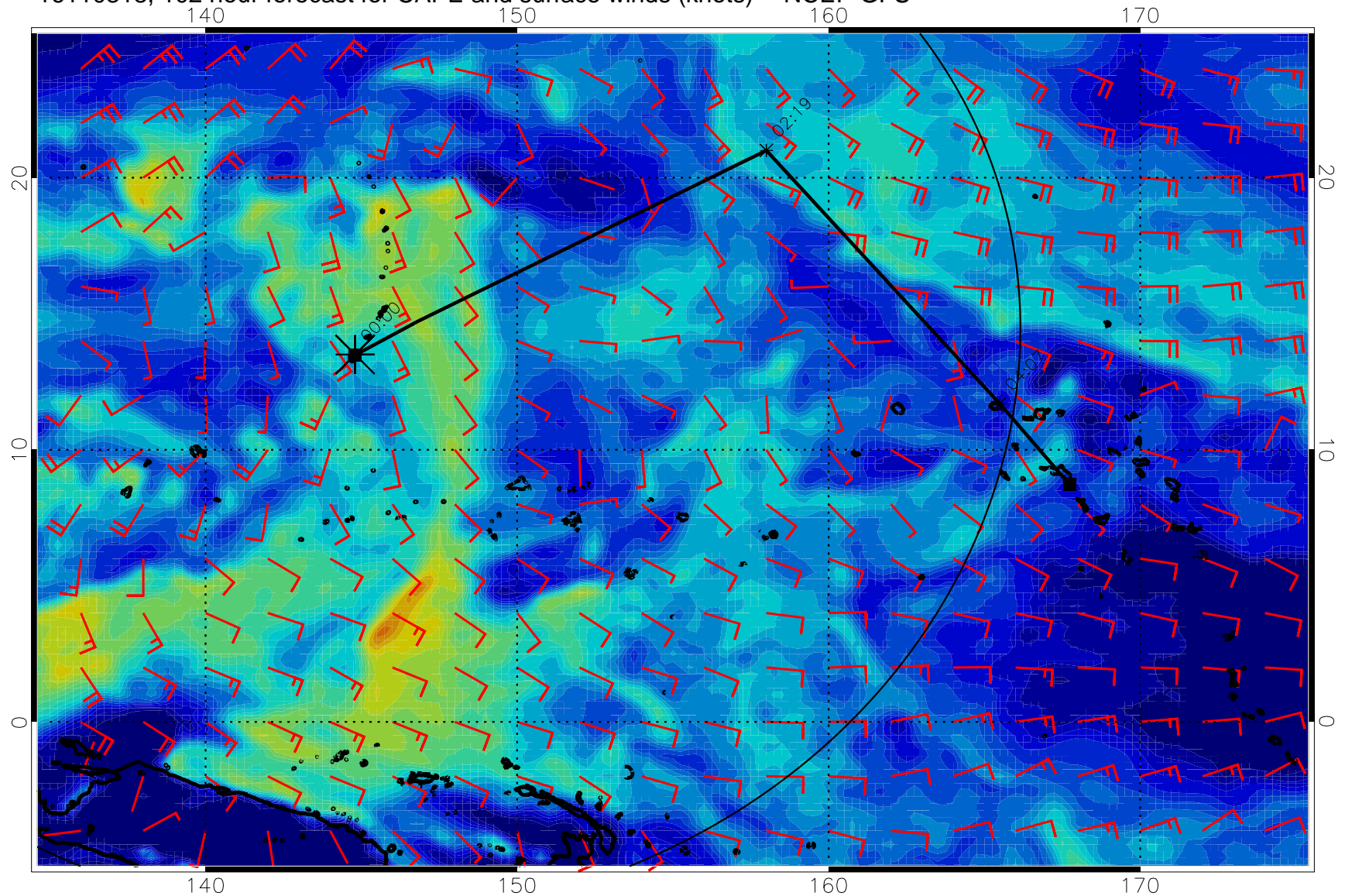


16110312, 096 hour forecast for CAPE and surface winds (knots) -- NCEP GFS

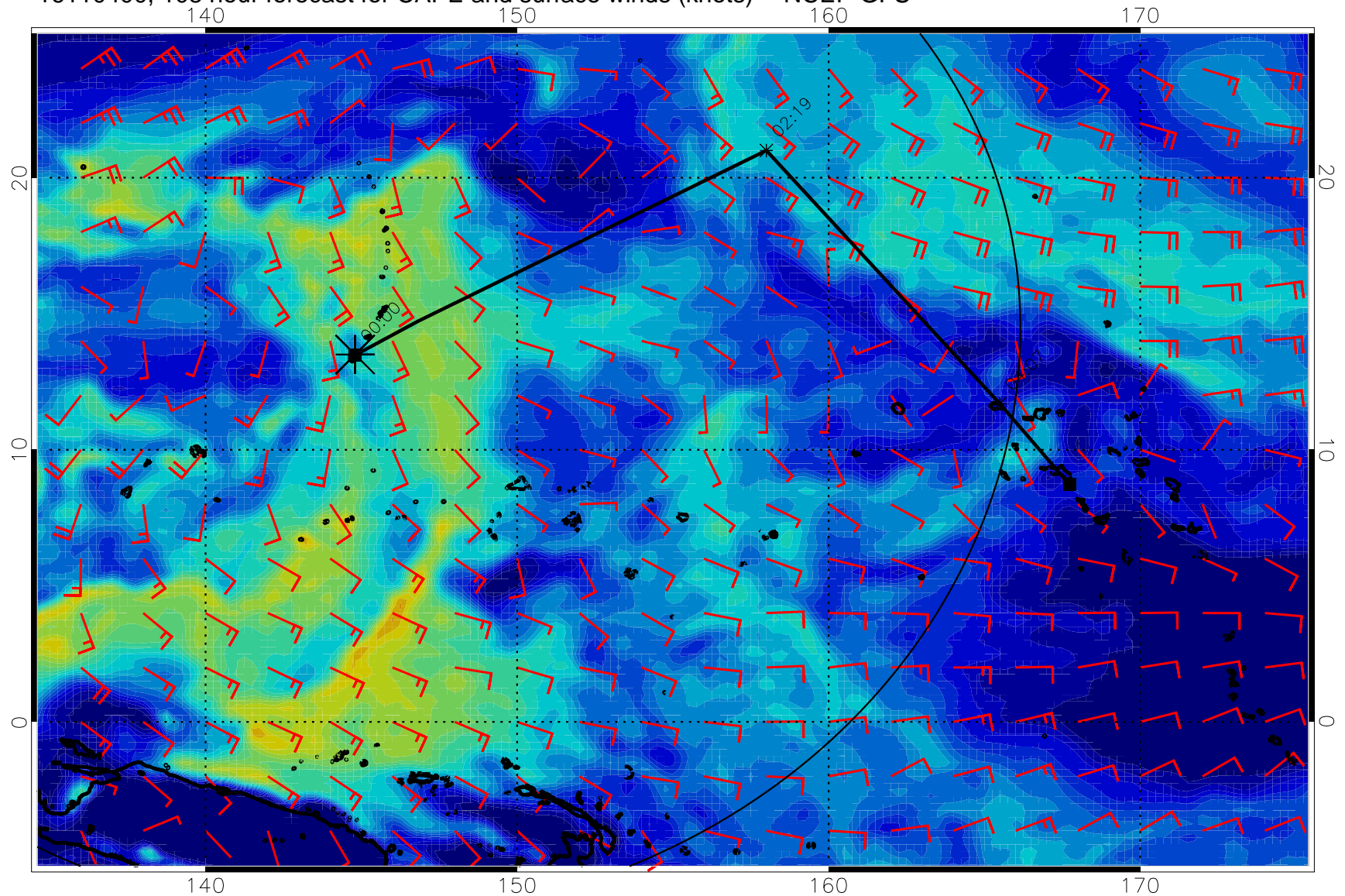




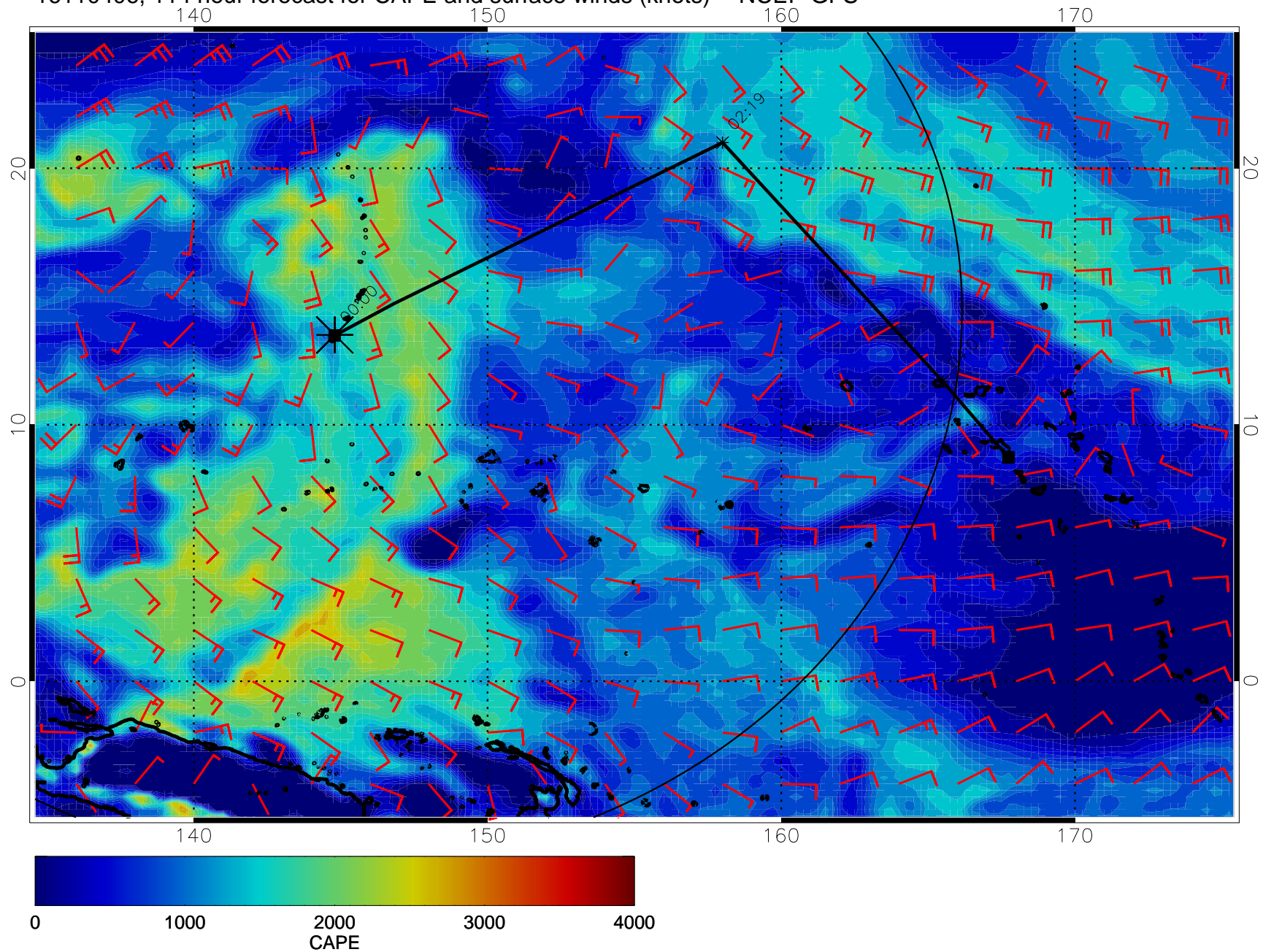
16110318, 102 hour forecast for CAPE and surface winds (knots) -- NCEP GFS



16110400, 108 hour forecast for CAPE and surface winds (knots) -- NCEP GFS



16110406, 114 hour forecast for CAPE and surface winds (knots) -- NCEP GFS



16110412, 120 hour forecast for CAPE and surface winds (knots) -- NCEP GFS

