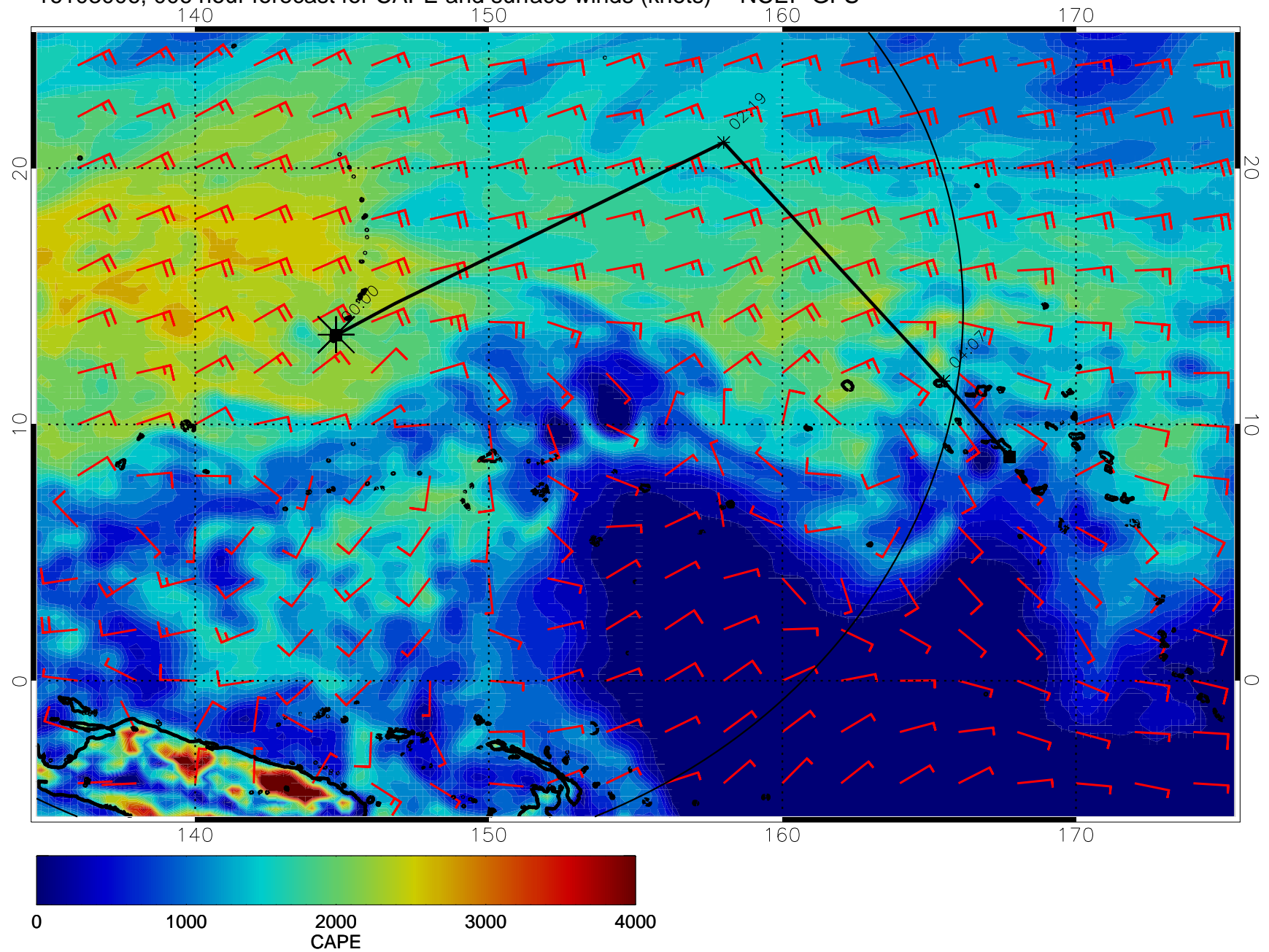
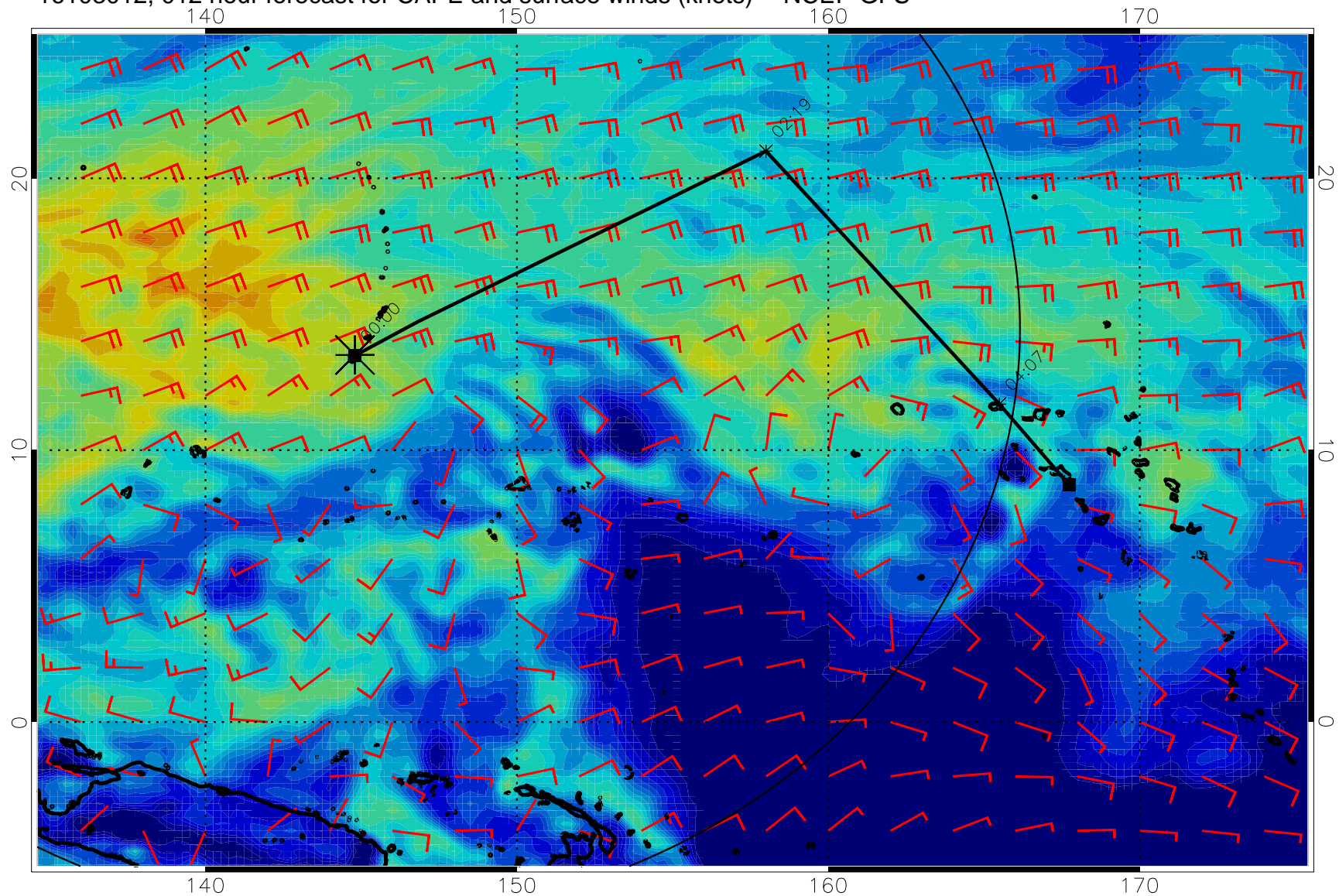


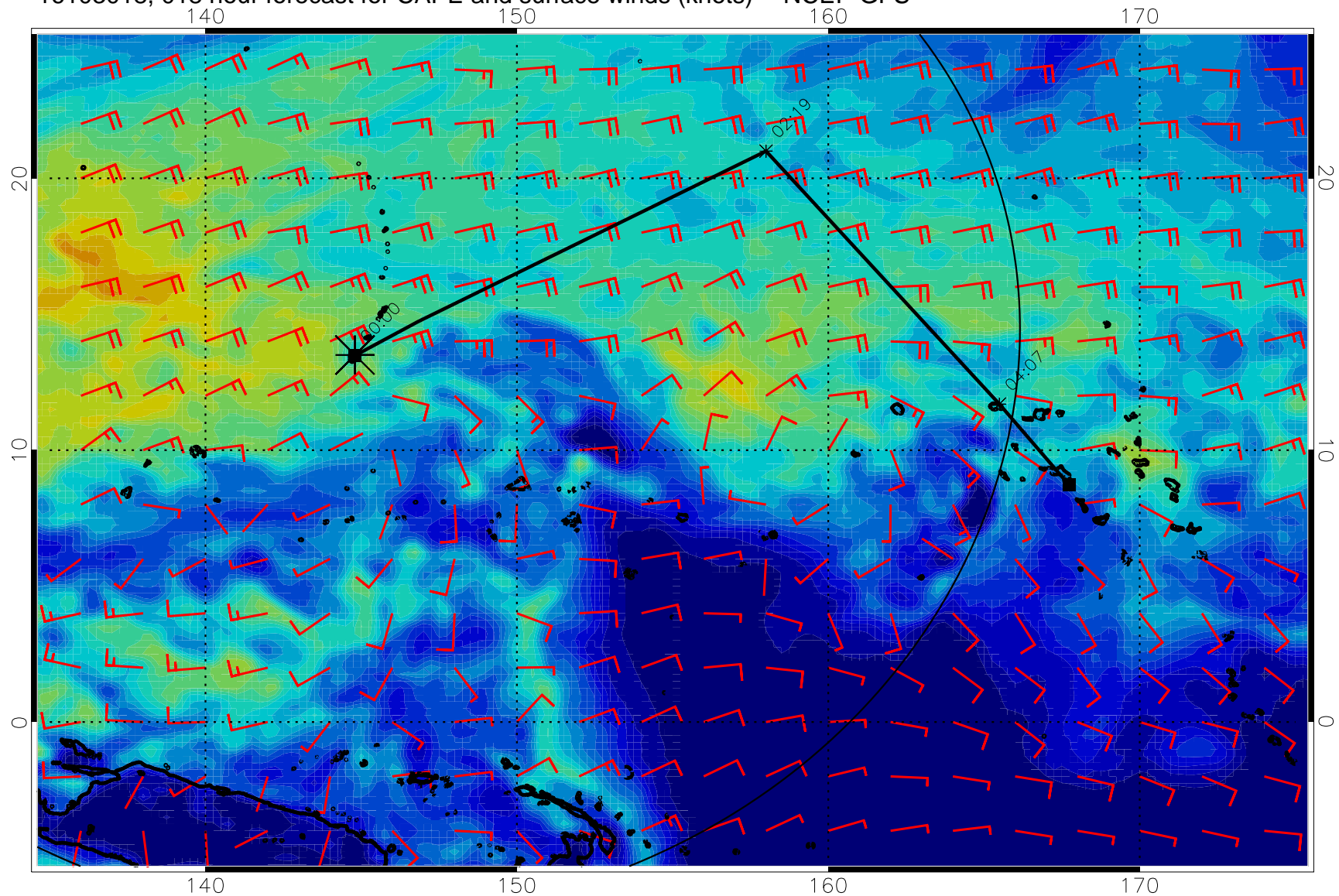
16103006, 006 hour forecast for CAPE and surface winds (knots) -- NCEP GFS



16103012, 012 hour forecast for CAPE and surface winds (knots) -- NCEP GFS

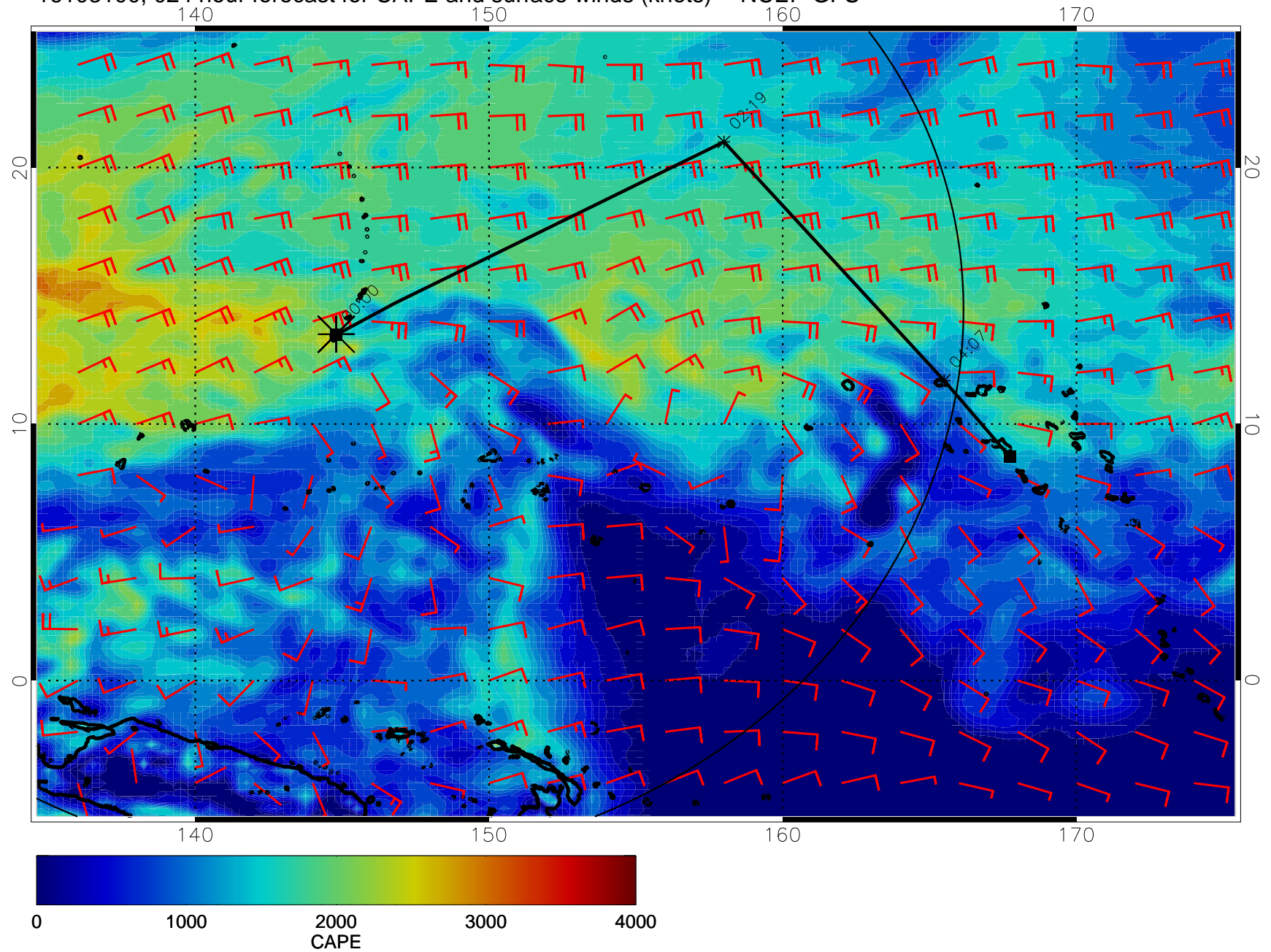


16103018, 018 hour forecast for CAPE and surface winds (knots) -- NCEP GFS



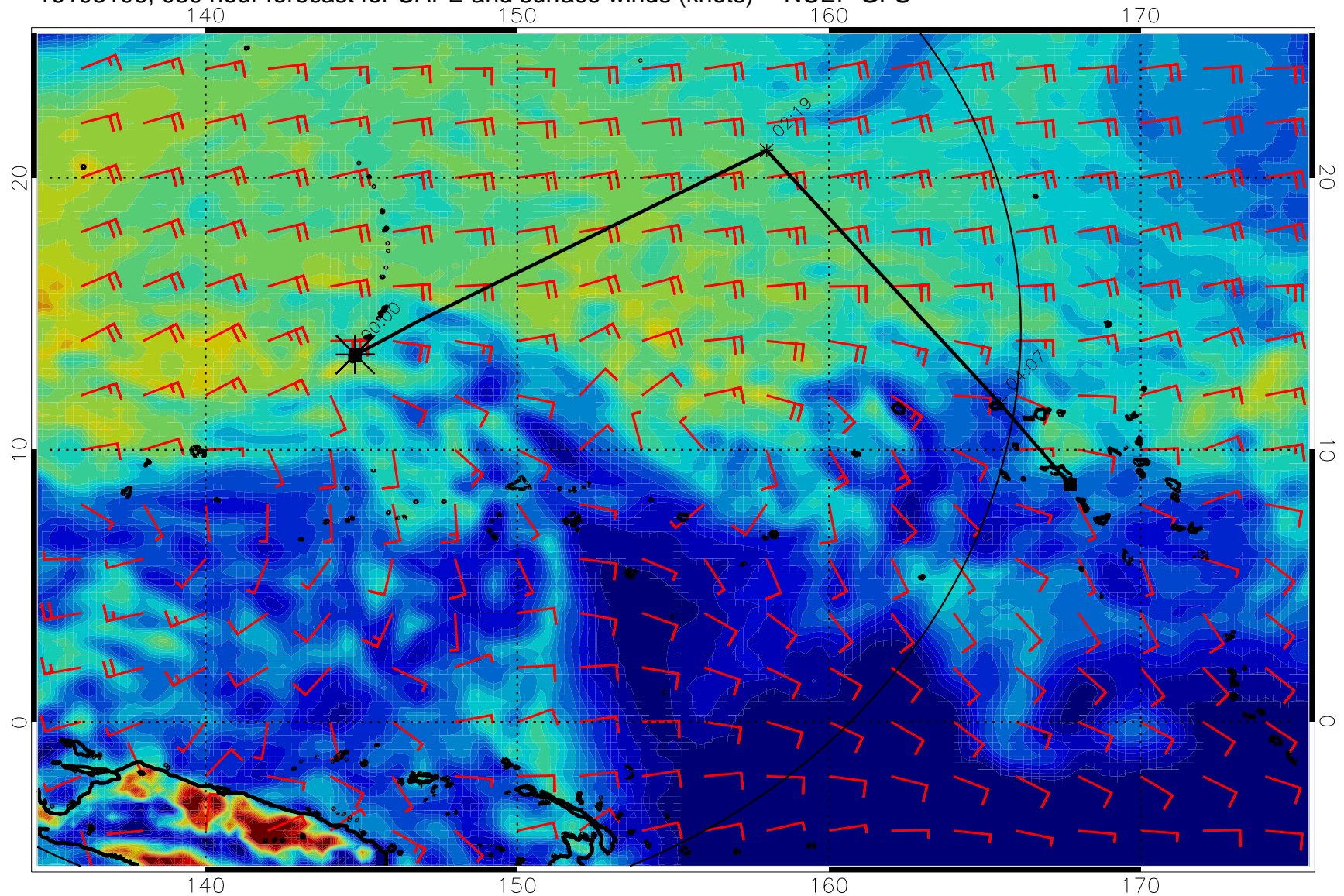


16103100, 024 hour forecast for CAPE and surface winds (knots) -- NCEP GFS

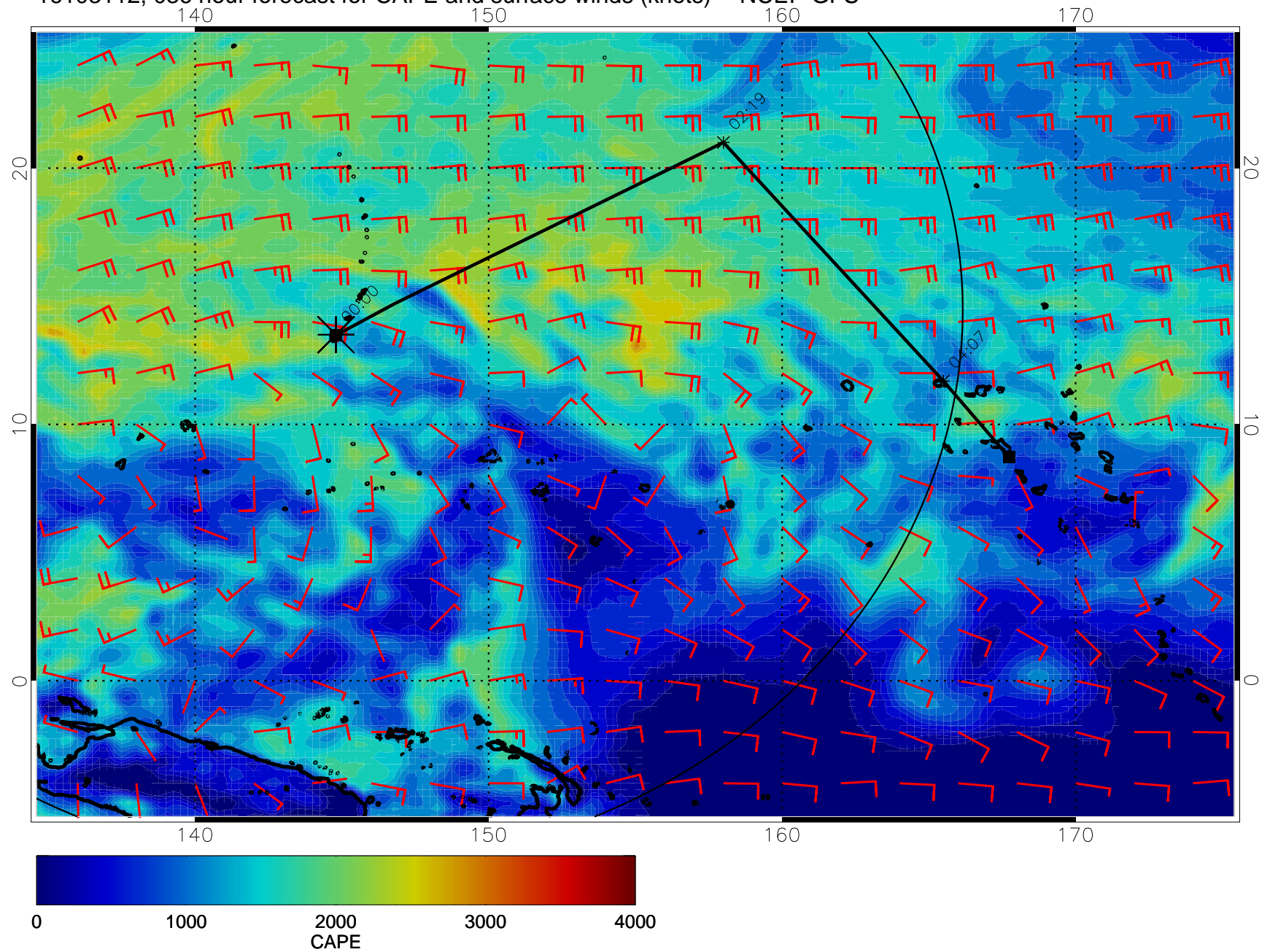




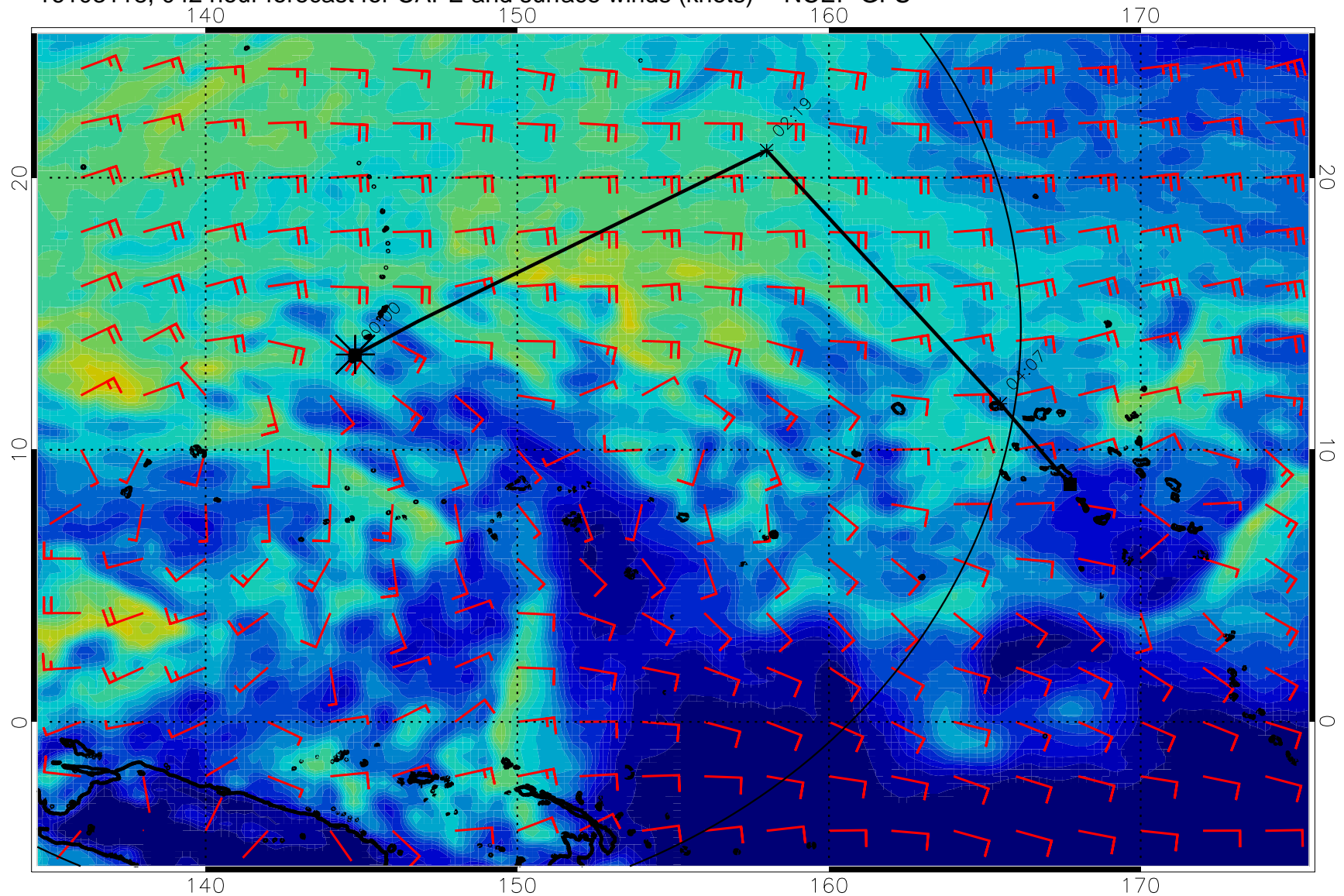
16103106, 030 hour forecast for CAPE and surface winds (knots) -- NCEP GFS



16103112, 036 hour forecast for CAPE and surface winds (knots) -- NCEP GFS

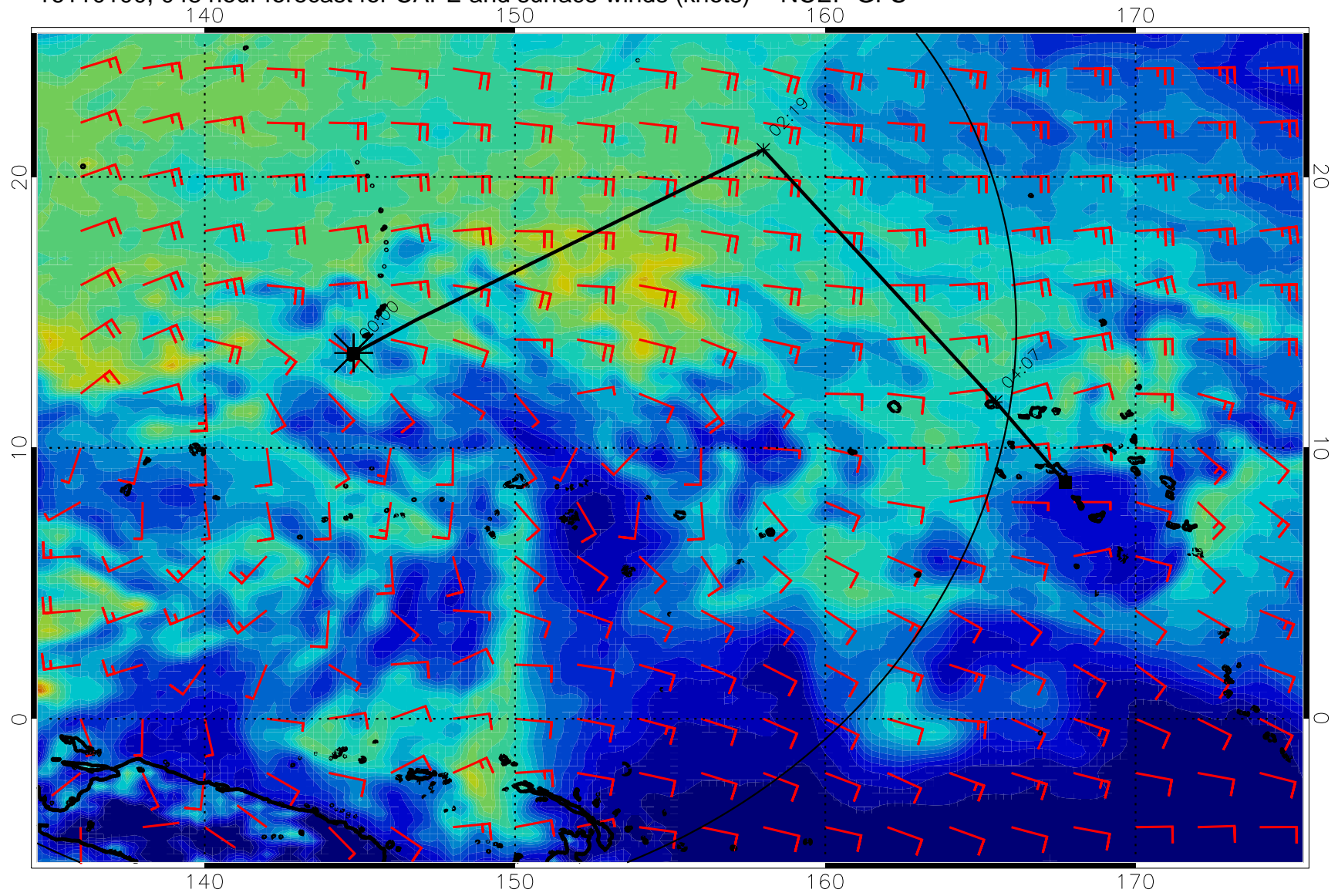


16103118, 042 hour forecast for CAPE and surface winds (knots) -- NCEP GFS

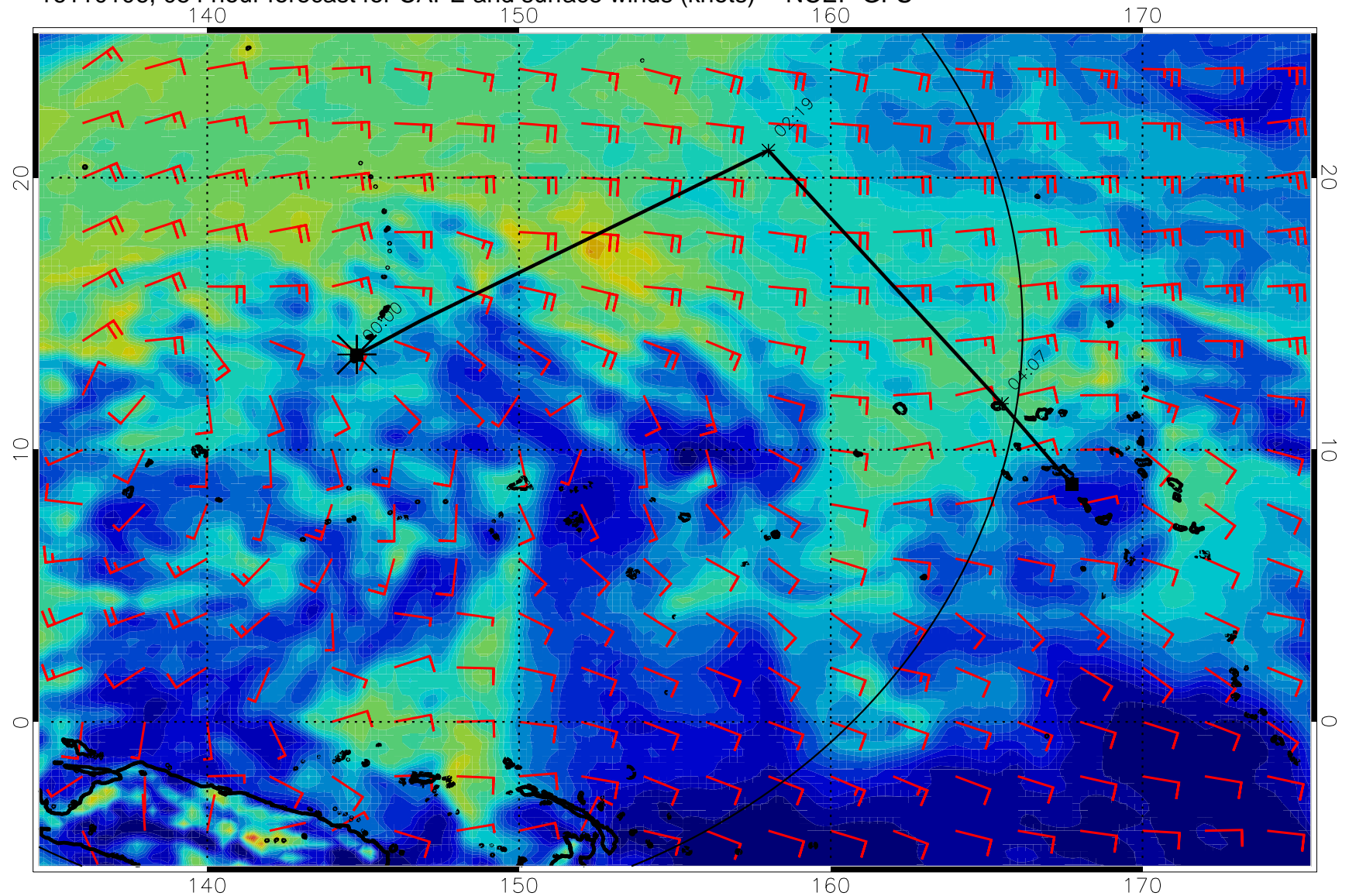




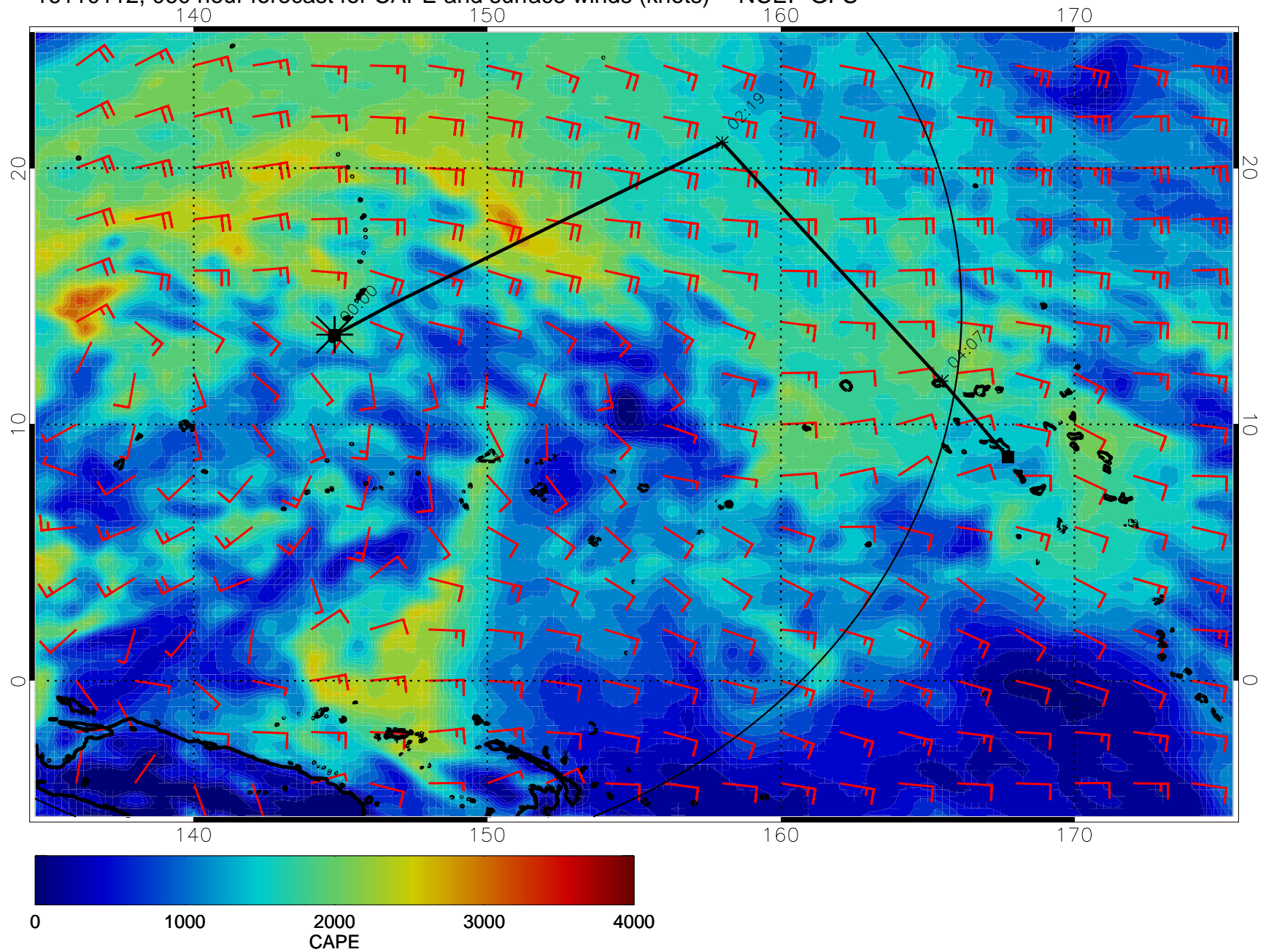
16110100, 048 hour forecast for CAPE and surface winds (knots) -- NCEP GFS



16110106, 054 hour forecast for CAPE and surface winds (knots) -- NCEP GFS

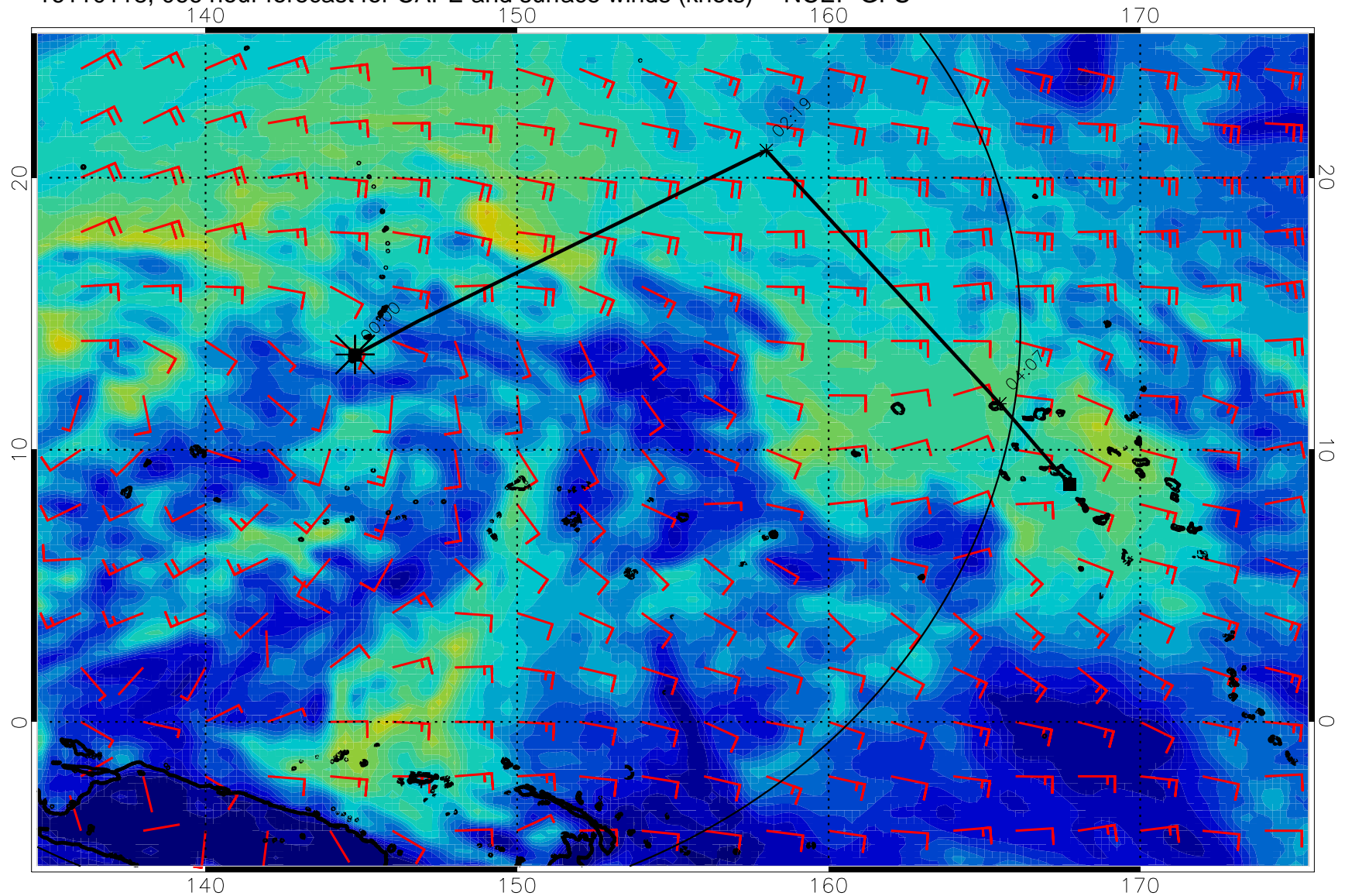


16110112, 060 hour forecast for CAPE and surface winds (knots) -- NCEP GFS

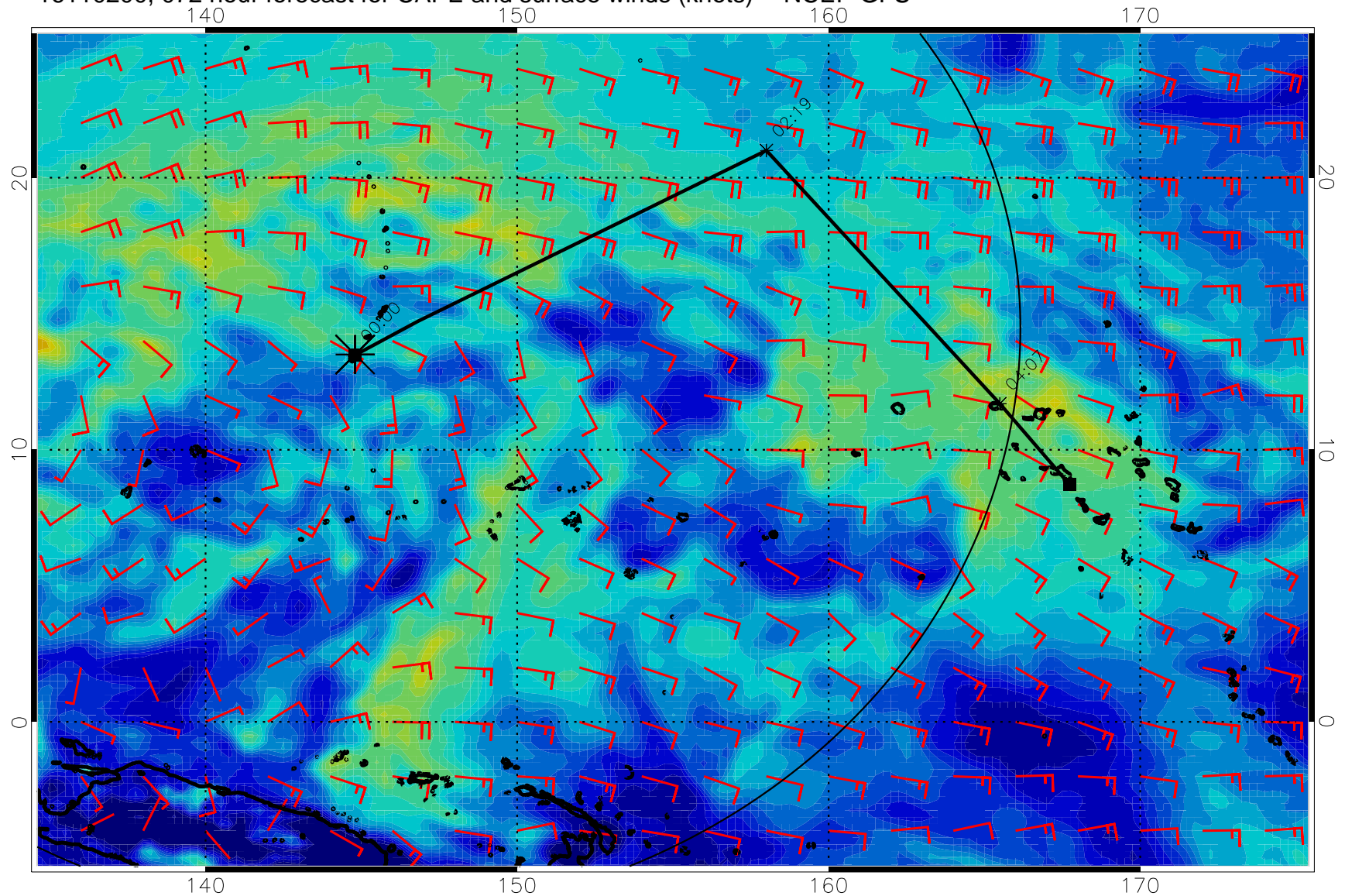




16110118, 066 hour forecast for CAPE and surface winds (knots) -- NCEP GFS

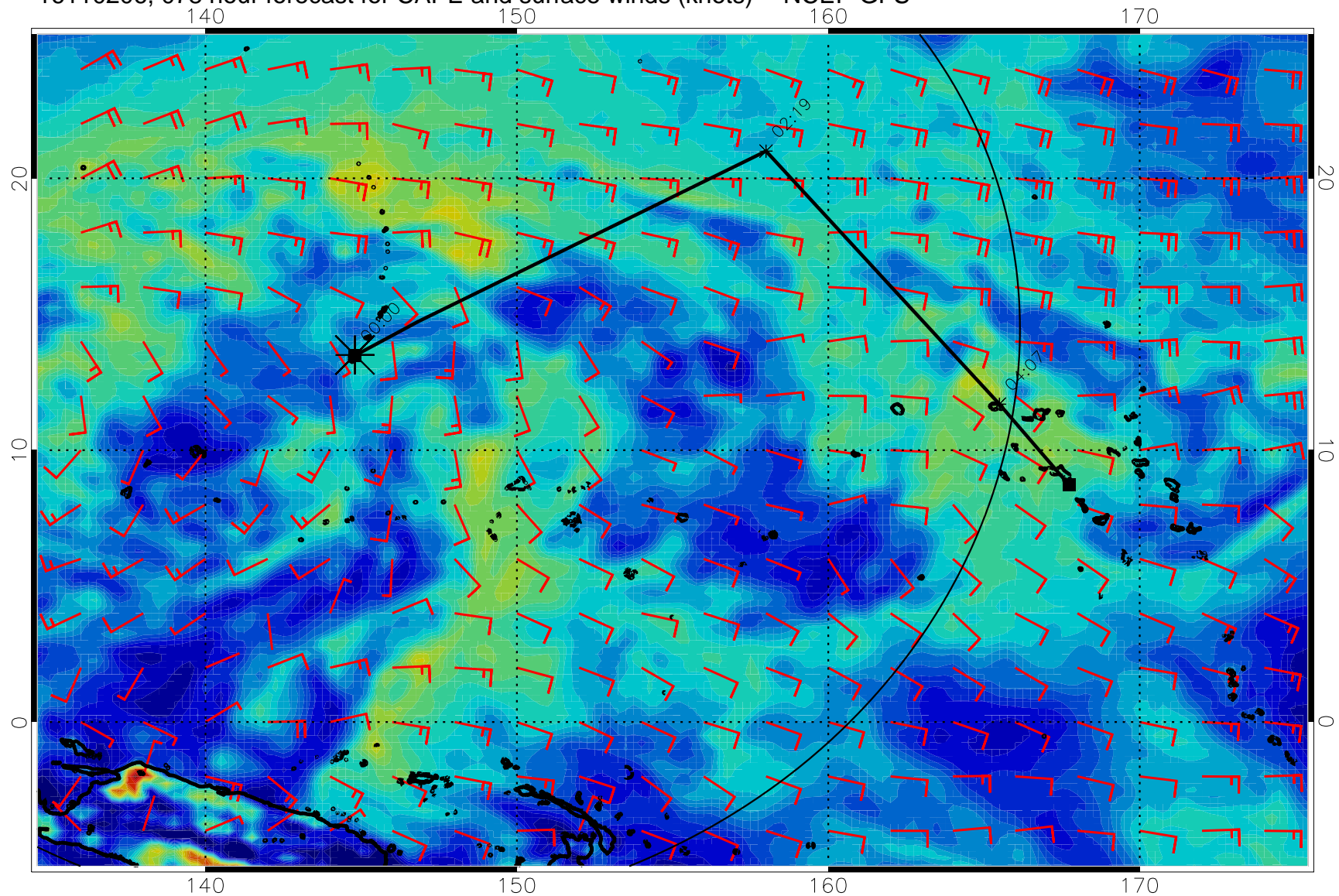


16110200, 072 hour forecast for CAPE and surface winds (knots) -- NCEP GFS



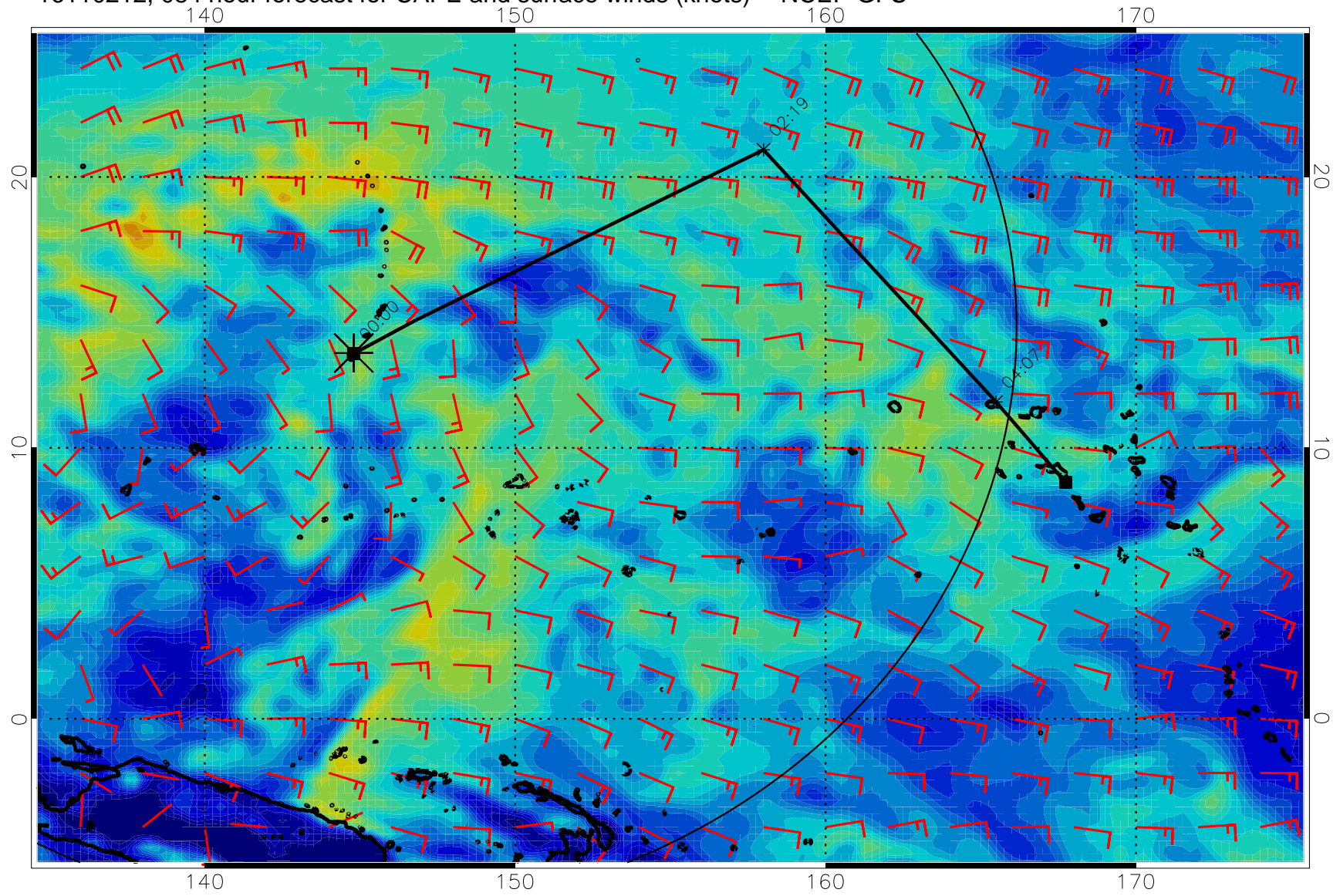


16110206, 078 hour forecast for CAPE and surface winds (knots) -- NCEP GFS

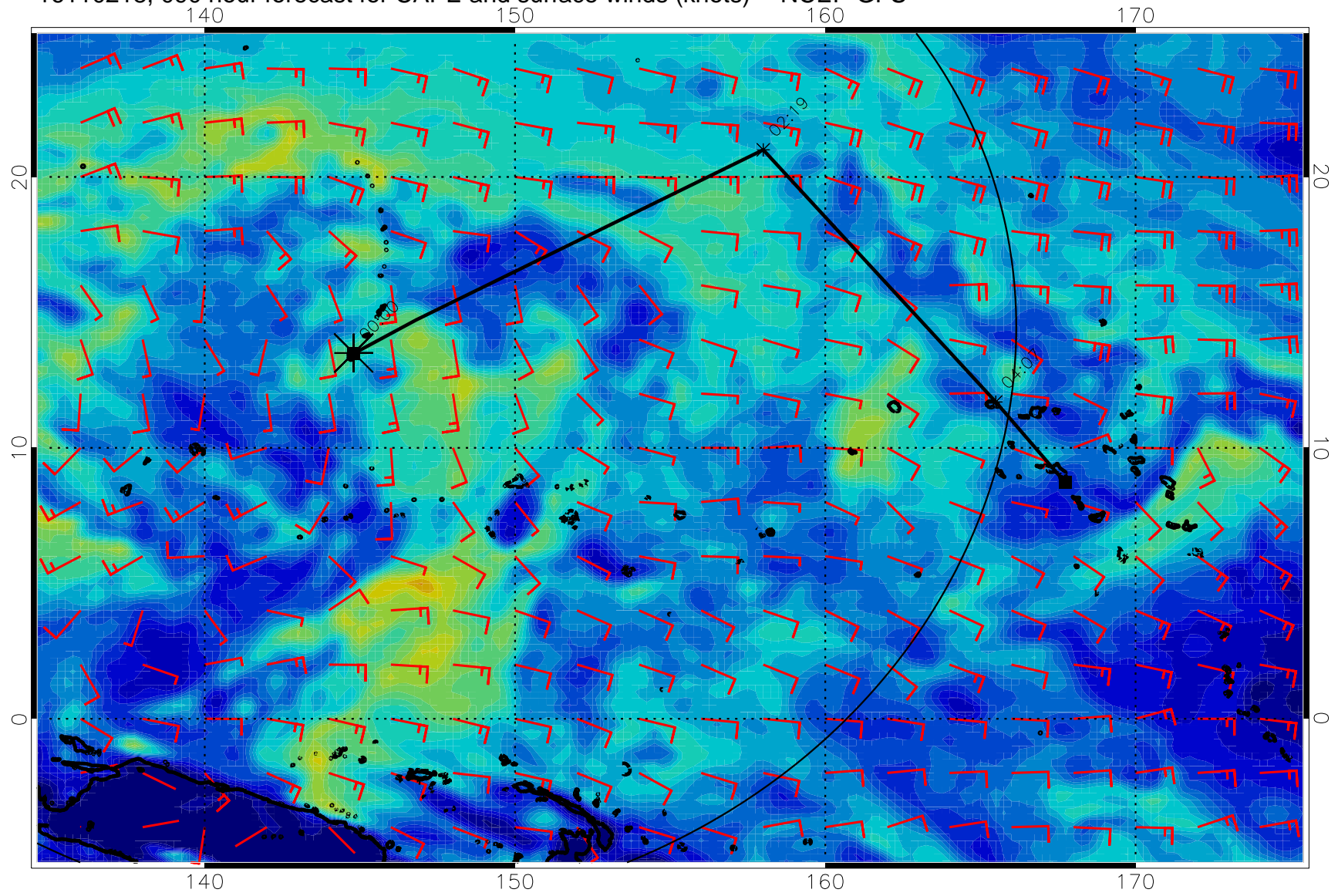




16110212, 084 hour forecast for CAPE and surface winds (knots) -- NCEP GFS

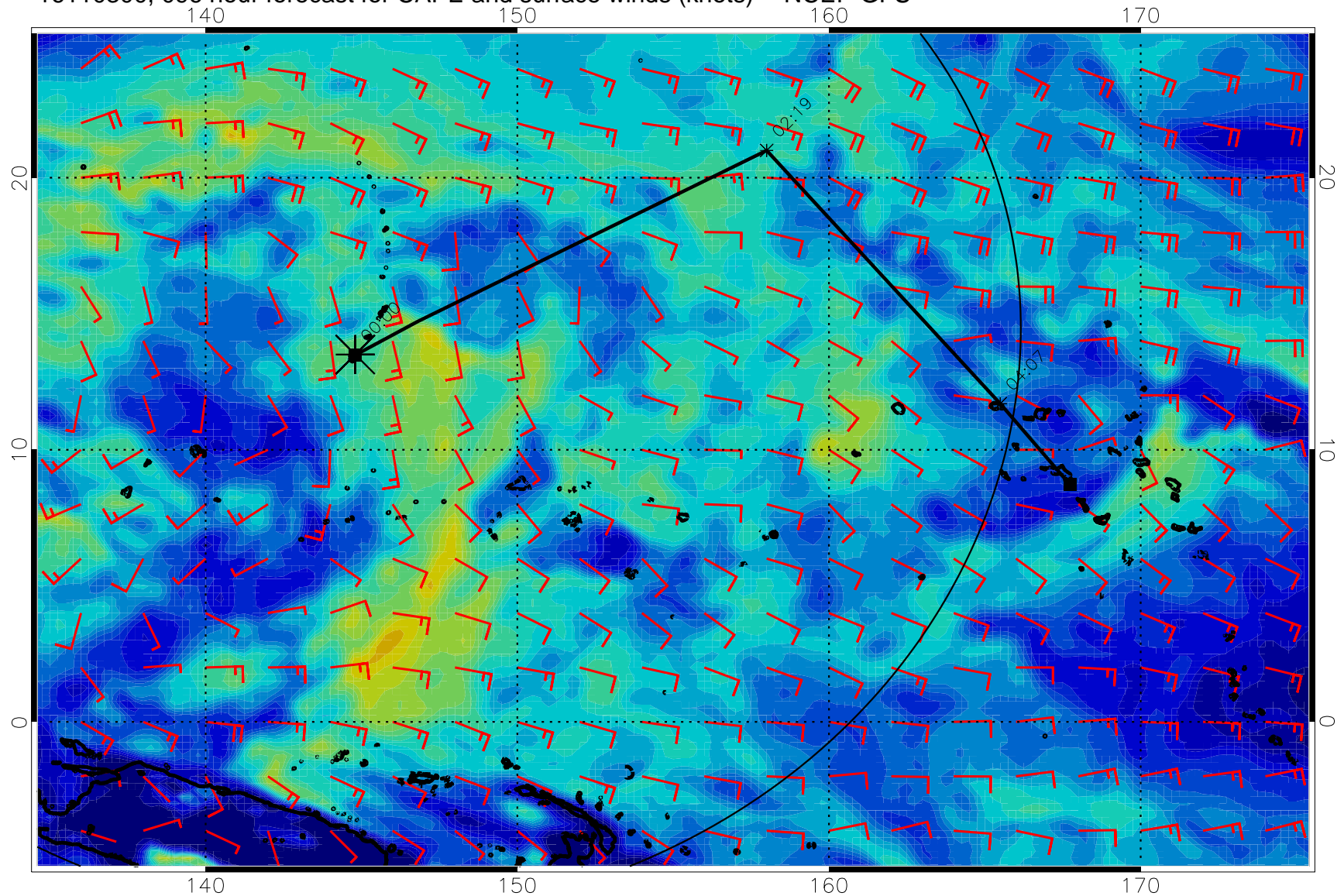


16110218, 0900 hour forecast for CAPE and surface winds (knots) -- NCEP GFS



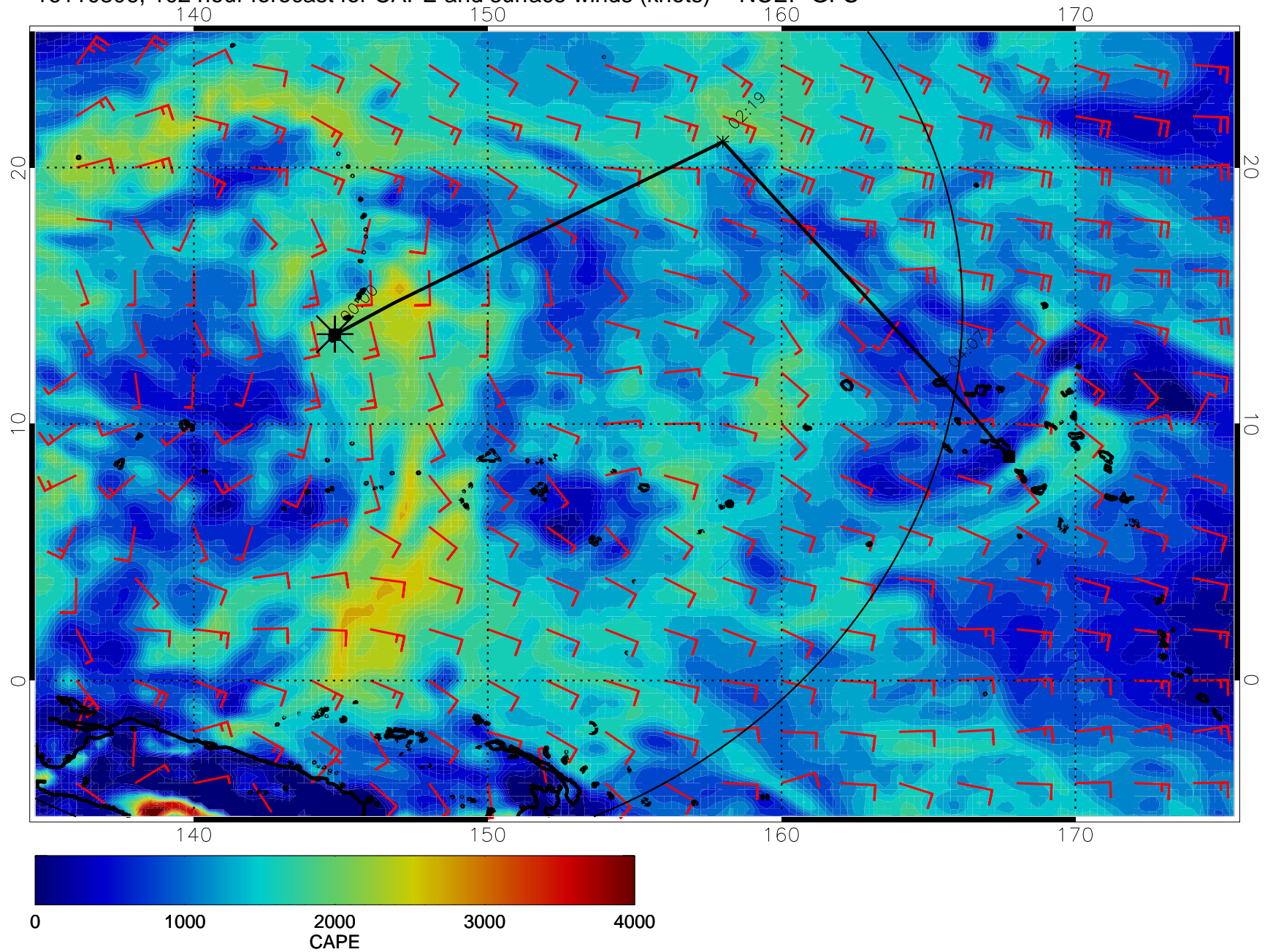


16110300, 096 hour forecast for CAPE and surface winds (knots) -- NCEP GFS

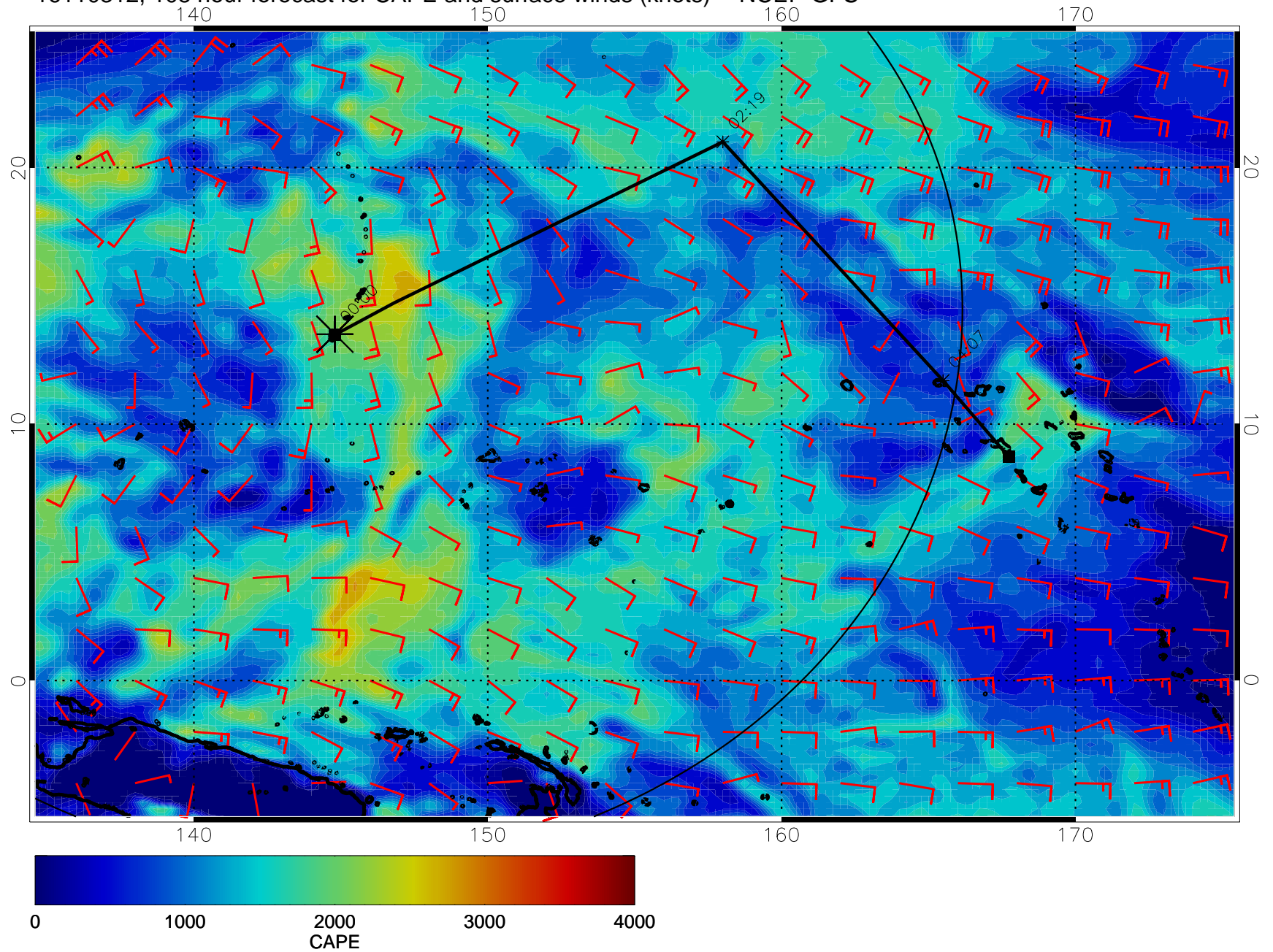




16110306, 102 hour forecast for CAPE and surface winds (knots) -- NCEP GFS

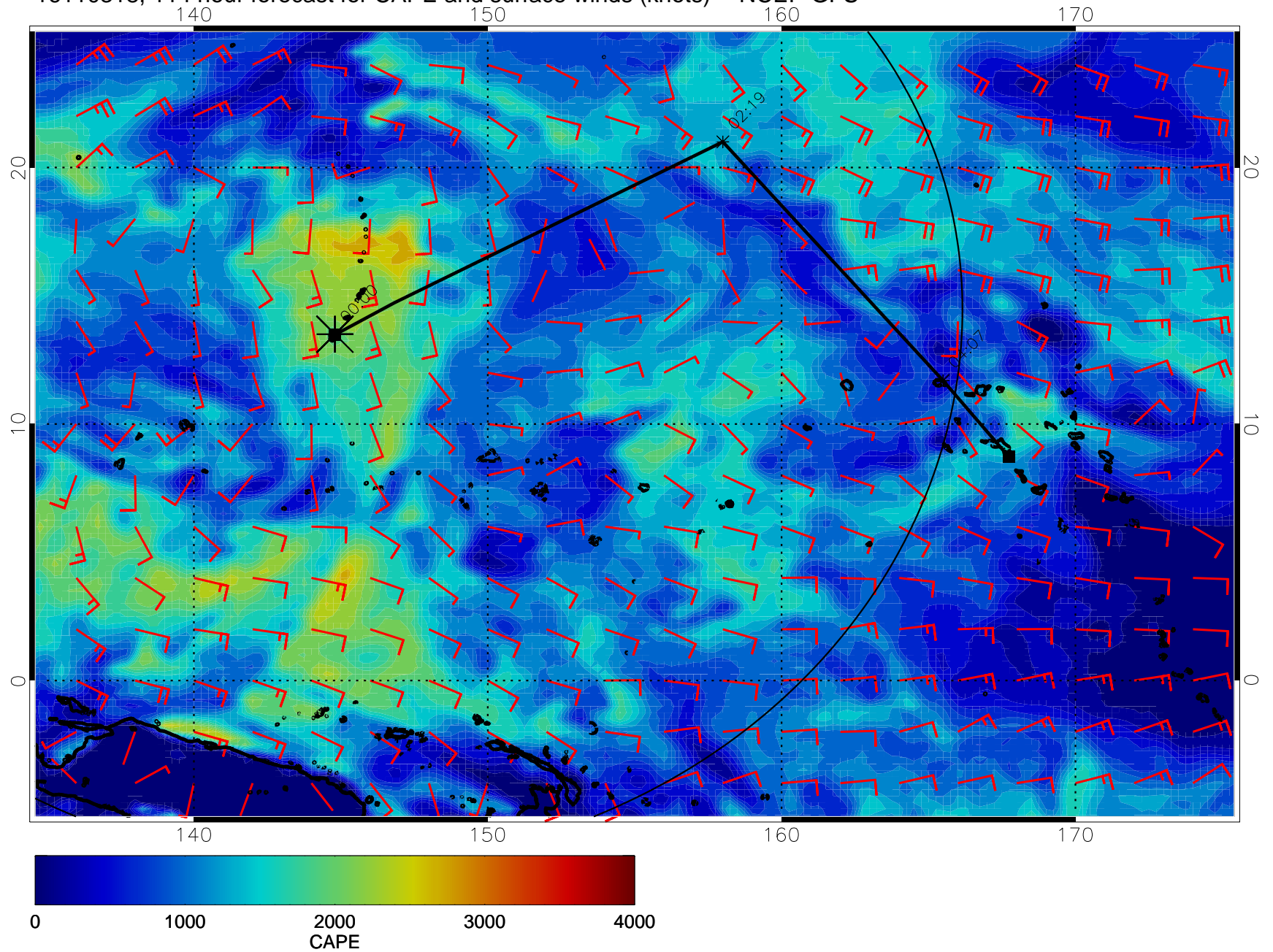


16110312, 108 hour forecast for CAPE and surface winds (knots) -- NCEP GFS





16110318, 114 hour forecast for CAPE and surface winds (knots) -- NCEP GFS





16110400, 120 hour forecast for CAPE and surface winds (knots) -- NCEP GFS

