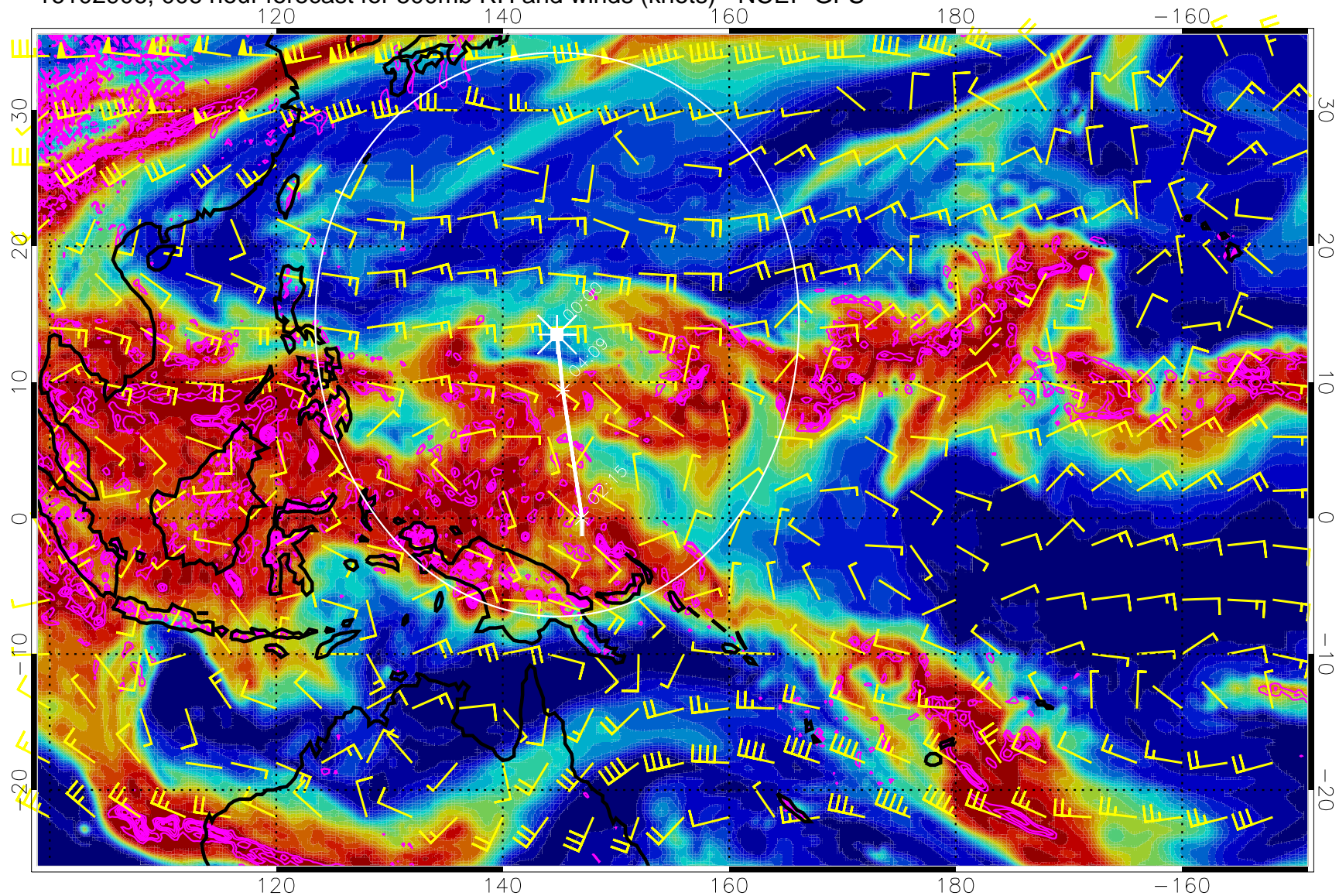


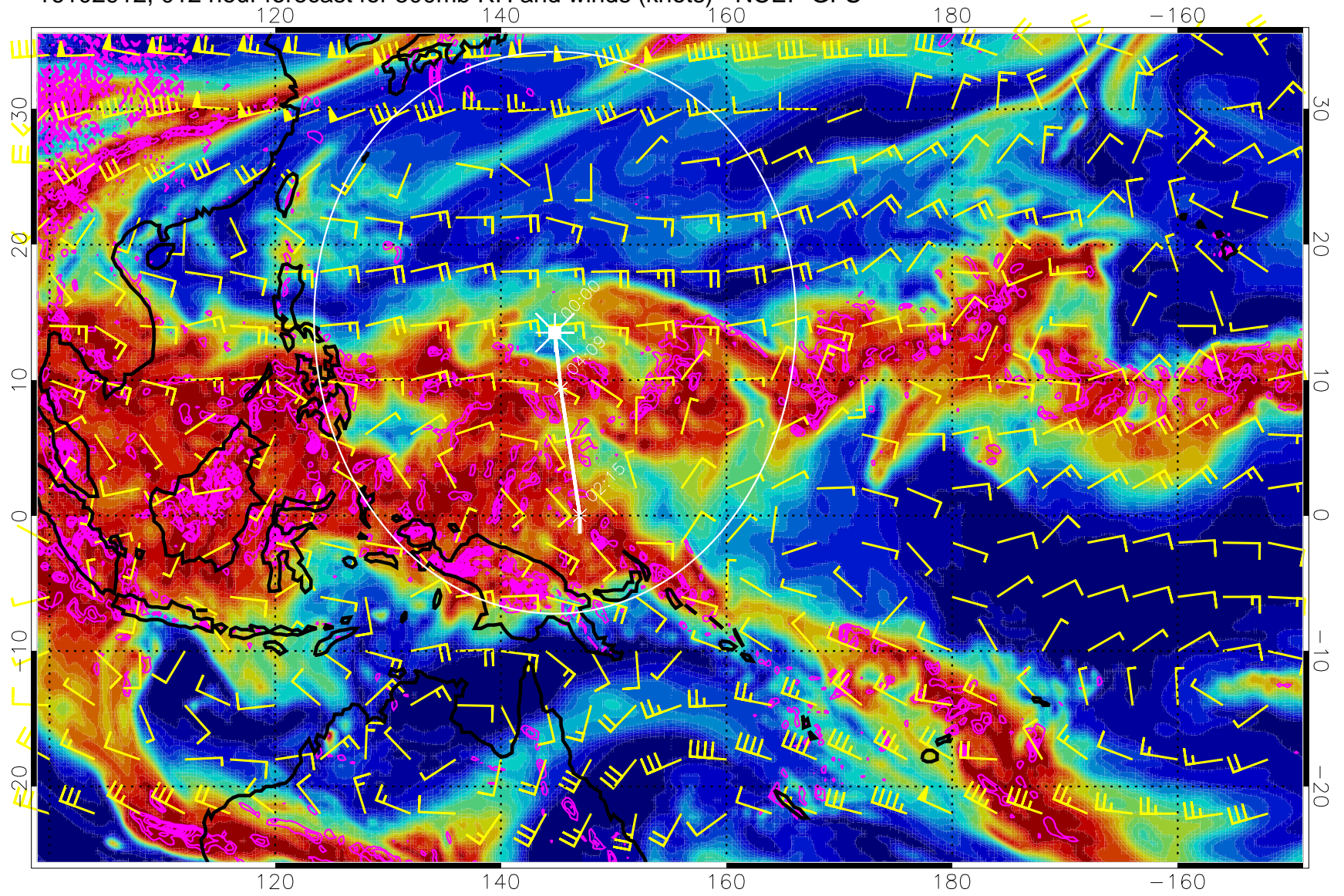
16102906, 006 hour forecast for 500mb RH and winds (knots) - NCEP GFS



Negative Omegas less than  $-0.3$ , contours of  $0.3$  Pa/s

Range ring of 2304 km

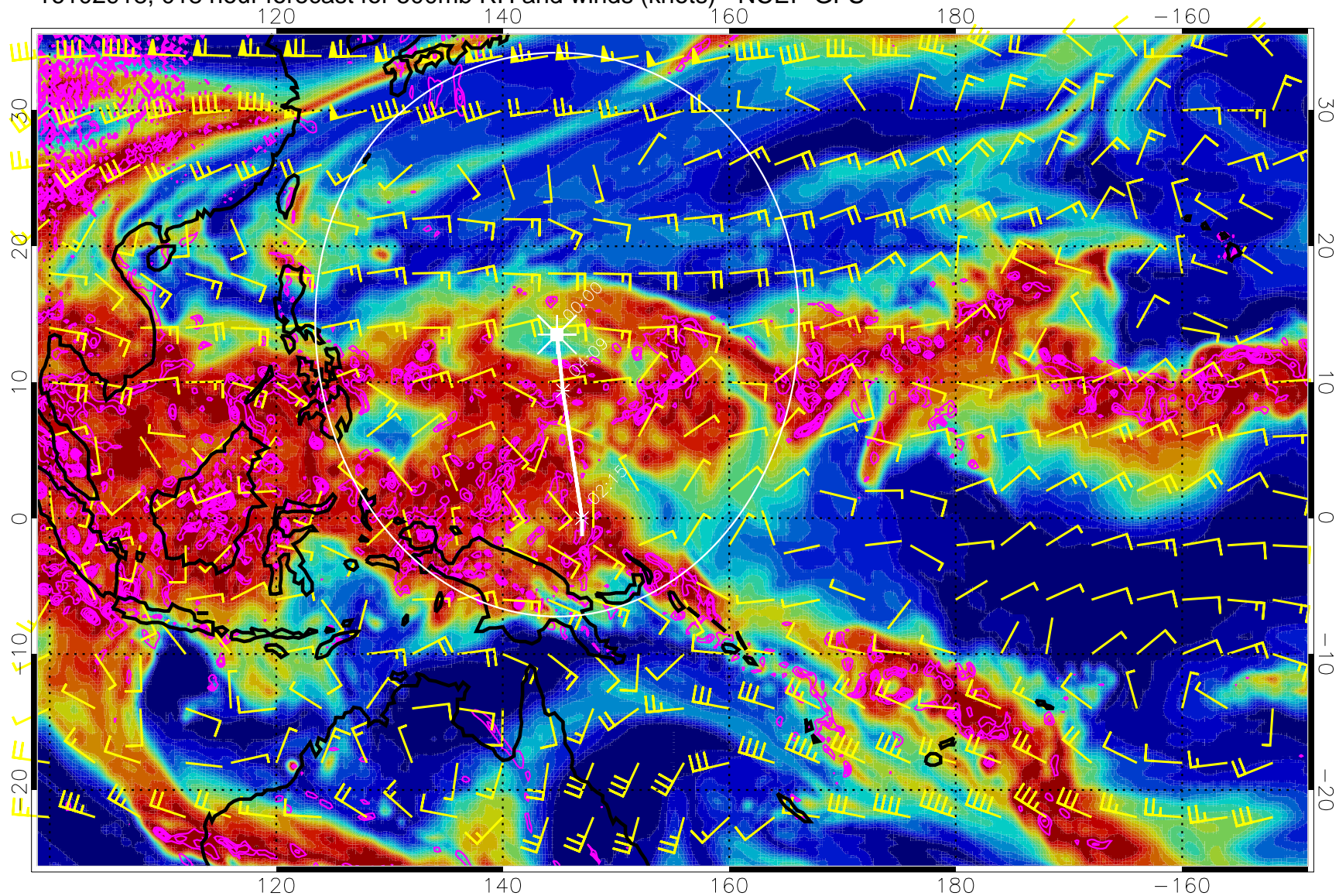
16102912, 012 hour forecast for 500mb RH and winds (knots) - NCEP GFS



Negative Omegas less than  $-0.3$ , contours of  $0.3$  Pa/s

Range ring of 2304 km

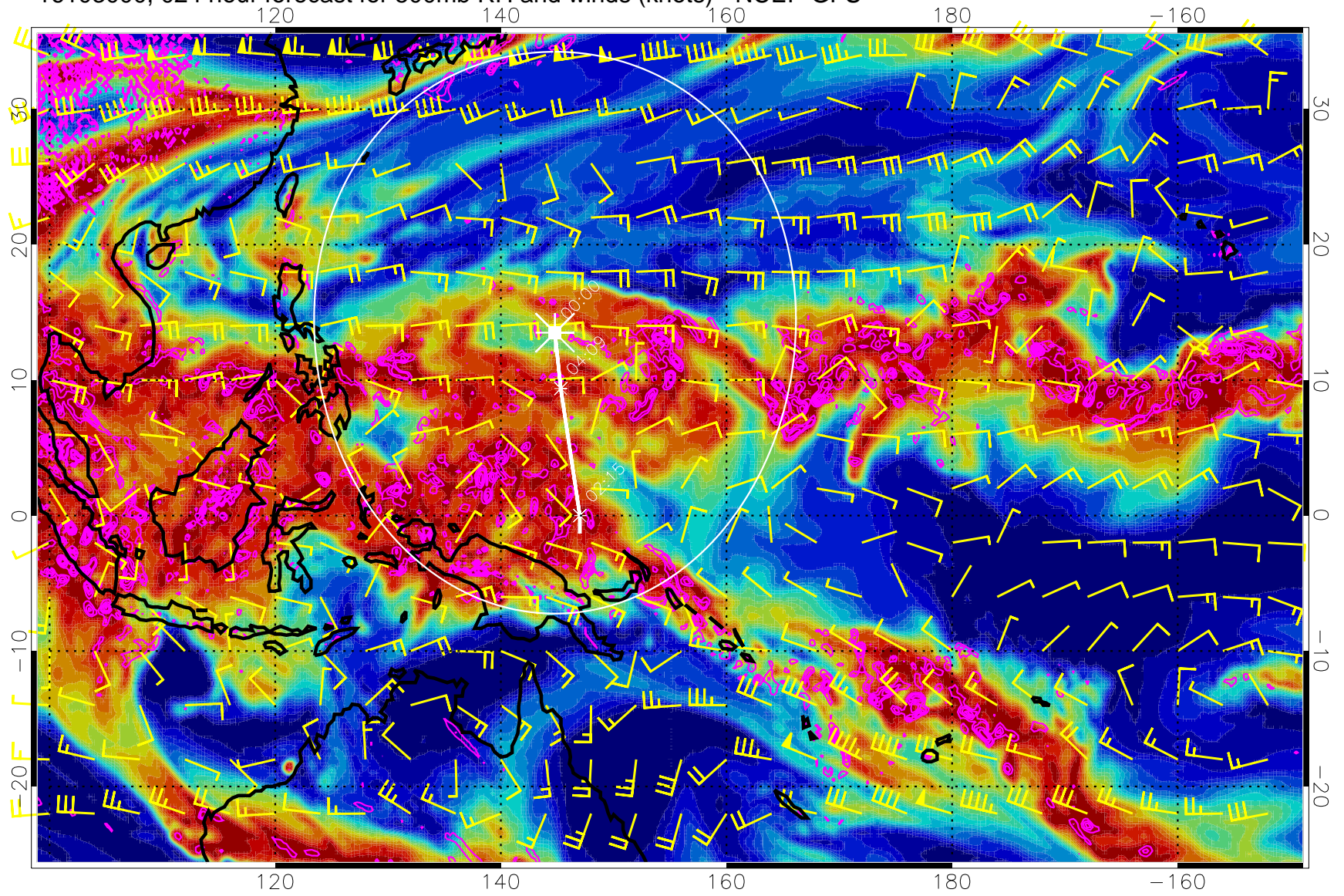
16102918, 018 hour forecast for 500mb RH and winds (knots) - NCEP GFS



Negative Omegas less than  $-0.3$ , contours of  $0.3$  Pa/s

Range ring of 2304 km

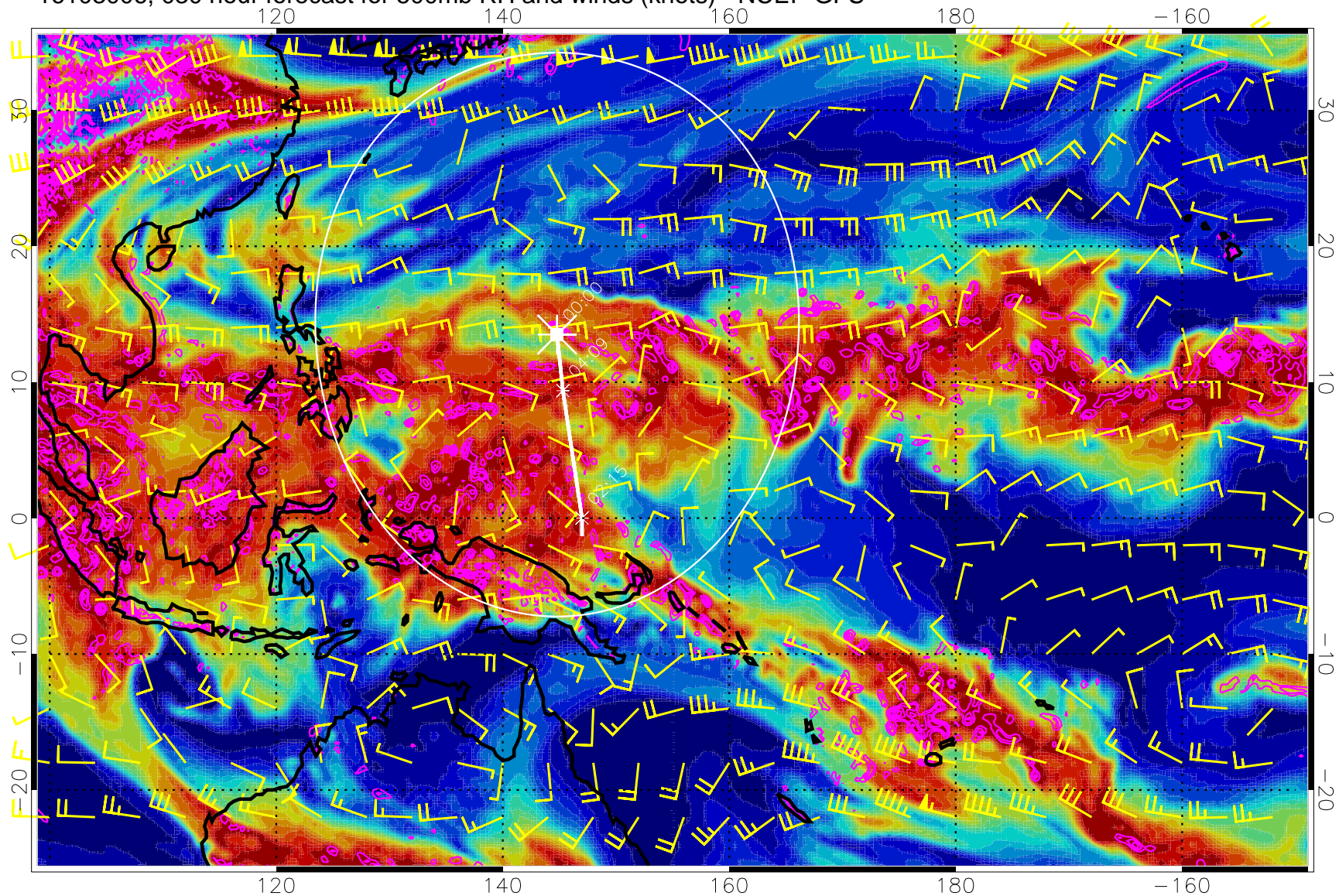
16103000, 024 hour forecast for 500mb RH and winds (knots) - NCEP GFS



Negative Omegas less than  $-0.3$ , contours of  $0.3$  Pa/s

Range ring of 2304 km

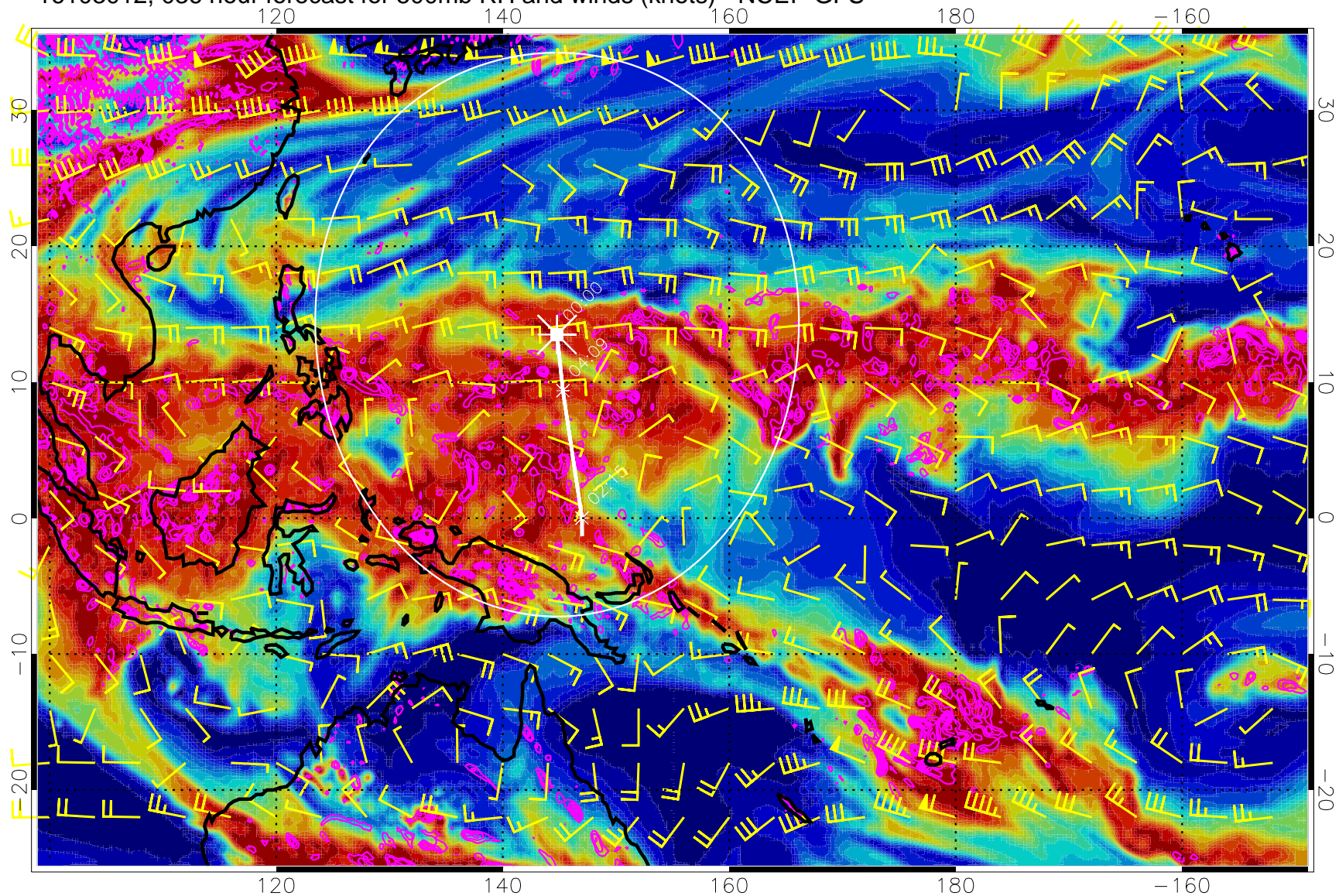
16103006, 030 hour forecast for 500mb RH and winds (knots) - NCEP GFS



Negative Omegas less than  $-0.3$ , contours of  $0.3$  Pa/s

Range ring of 2304 km

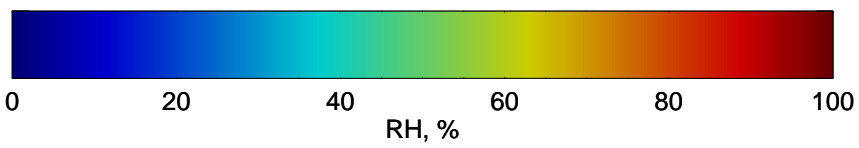
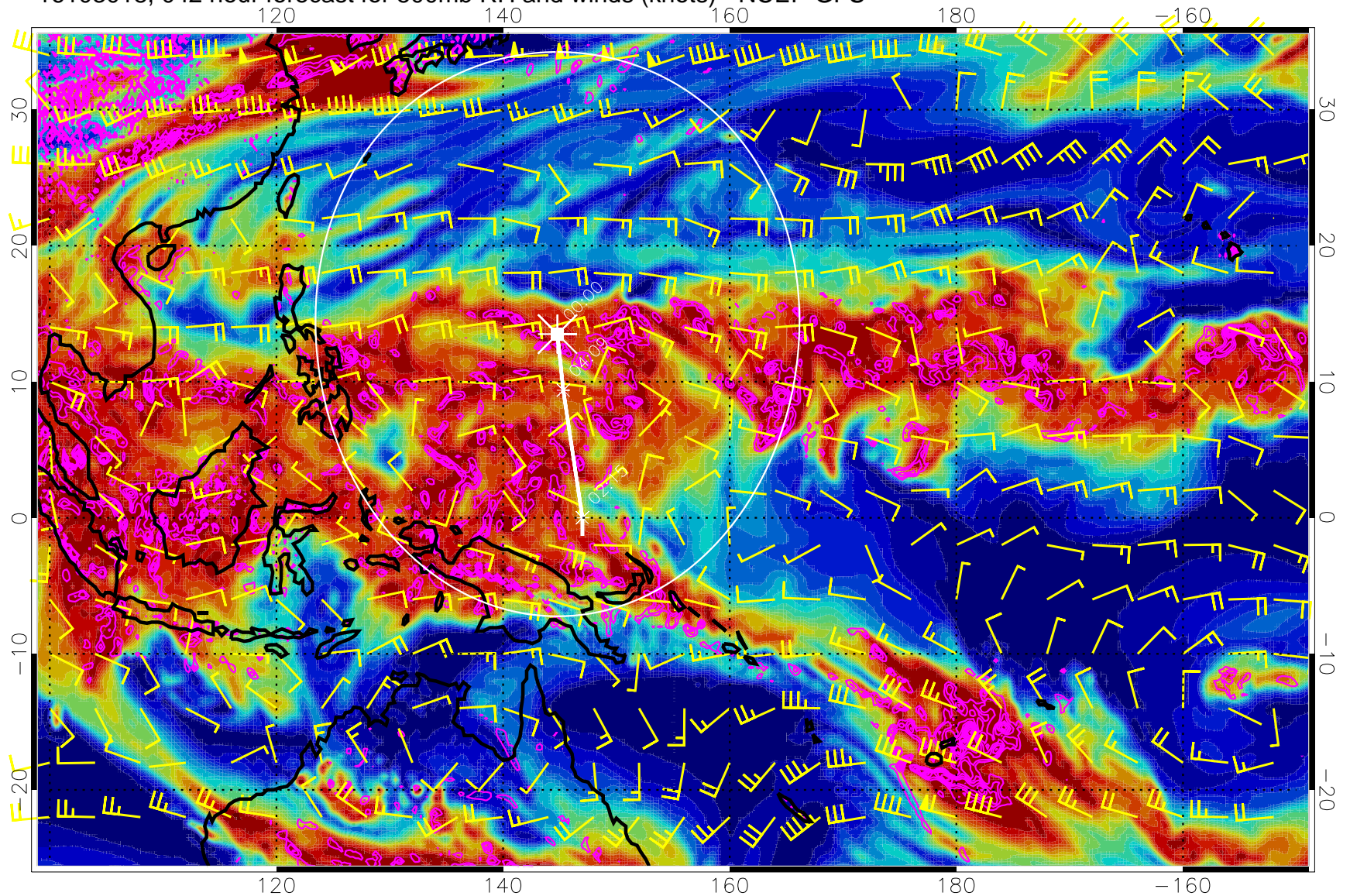
16103012, 036 hour forecast for 500mb RH and winds (knots) - NCEP GFS



Negative Omegas less than  $-0.3$ , contours of  $0.3$  Pa/s

Range ring of 2304 km

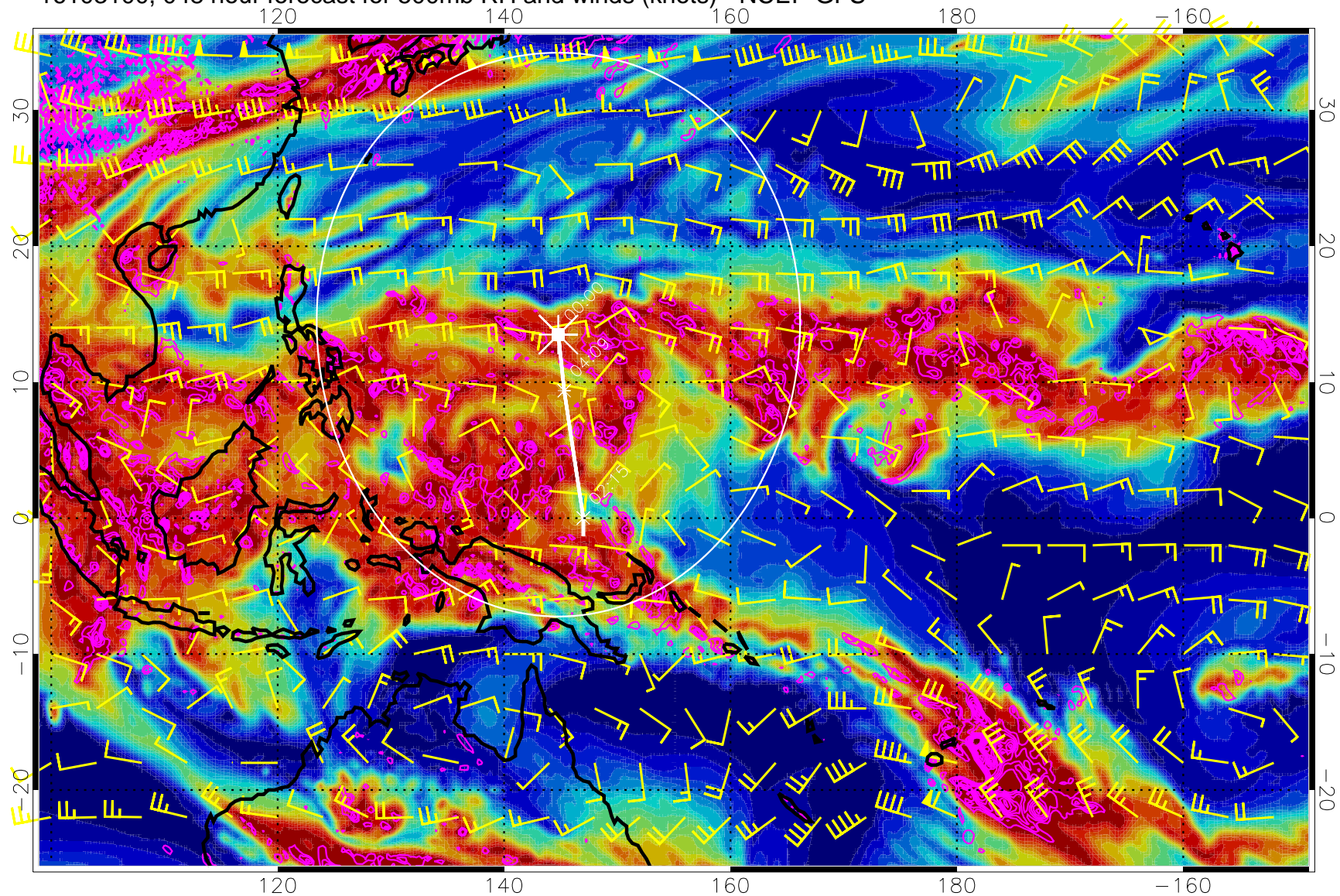
16103018, 042 hour forecast for 500mb RH and winds (knots) - NCEP GFS



Negative Omegas less than  $-0.3$ , contours of  $0.3$  Pa/s

Range ring of 2304 km

16103100, 048 hour forecast for 500mb RH and winds (knots) - NCEP GFS

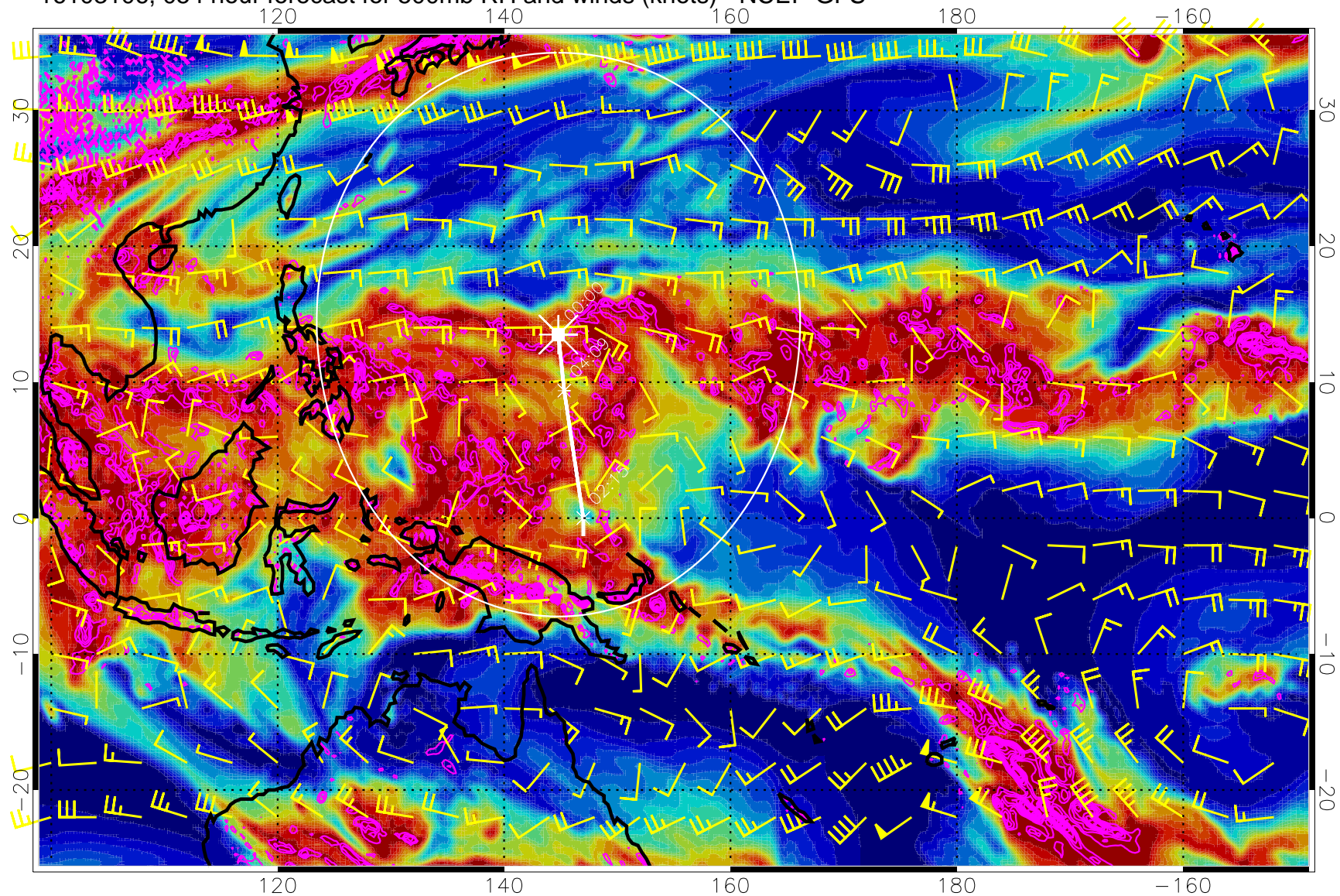


Negative Omegas less than  $-0.3$ , contours of  $0.3$  Pa/s

Range ring of 2304 km



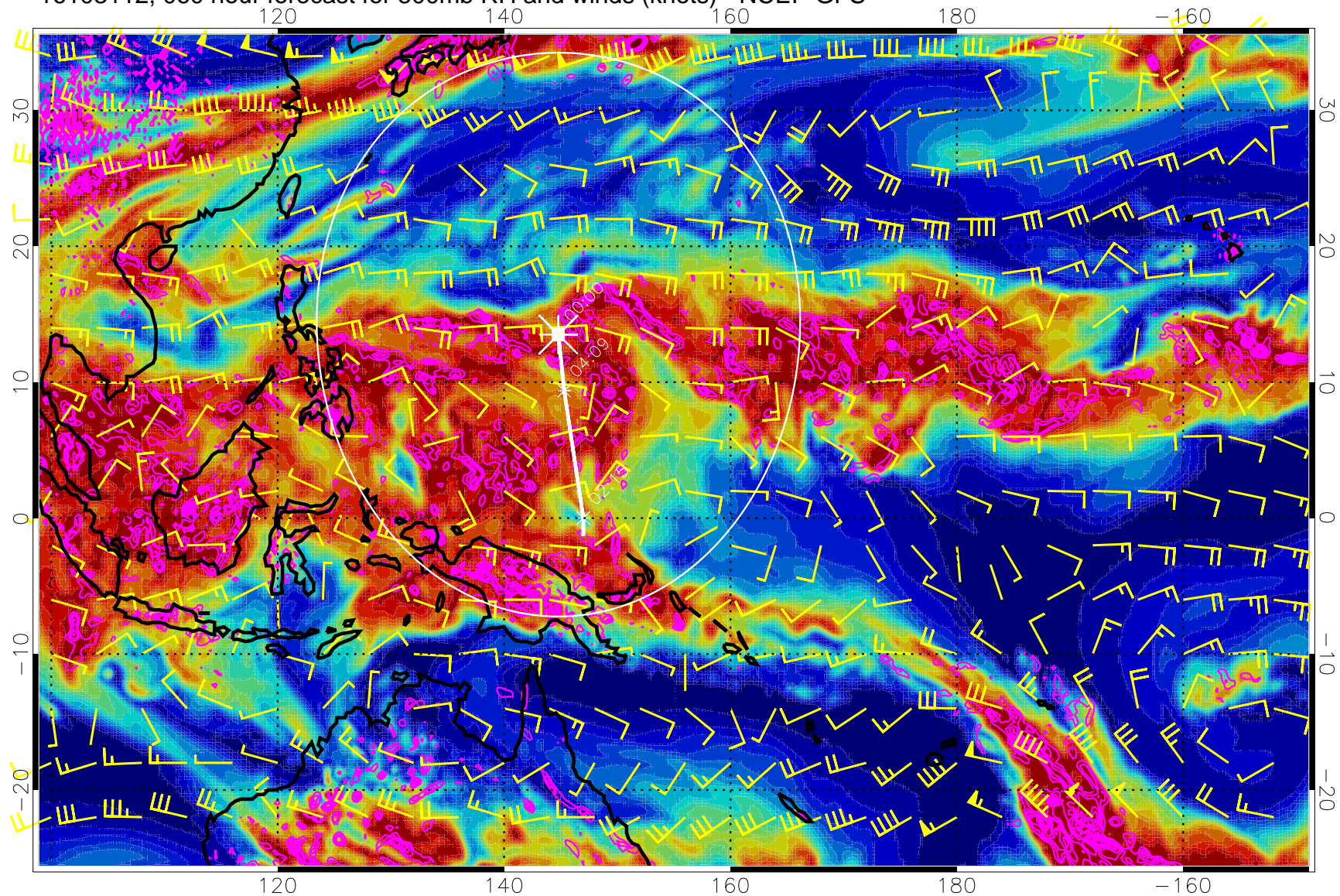
16103106, 054 hour forecast for 500mb RH and winds (knots) - NCEP GFS



Negative Omegas less than  $-0.3$ , contours of  $0.3$  Pa/s

Range ring of 2304 km

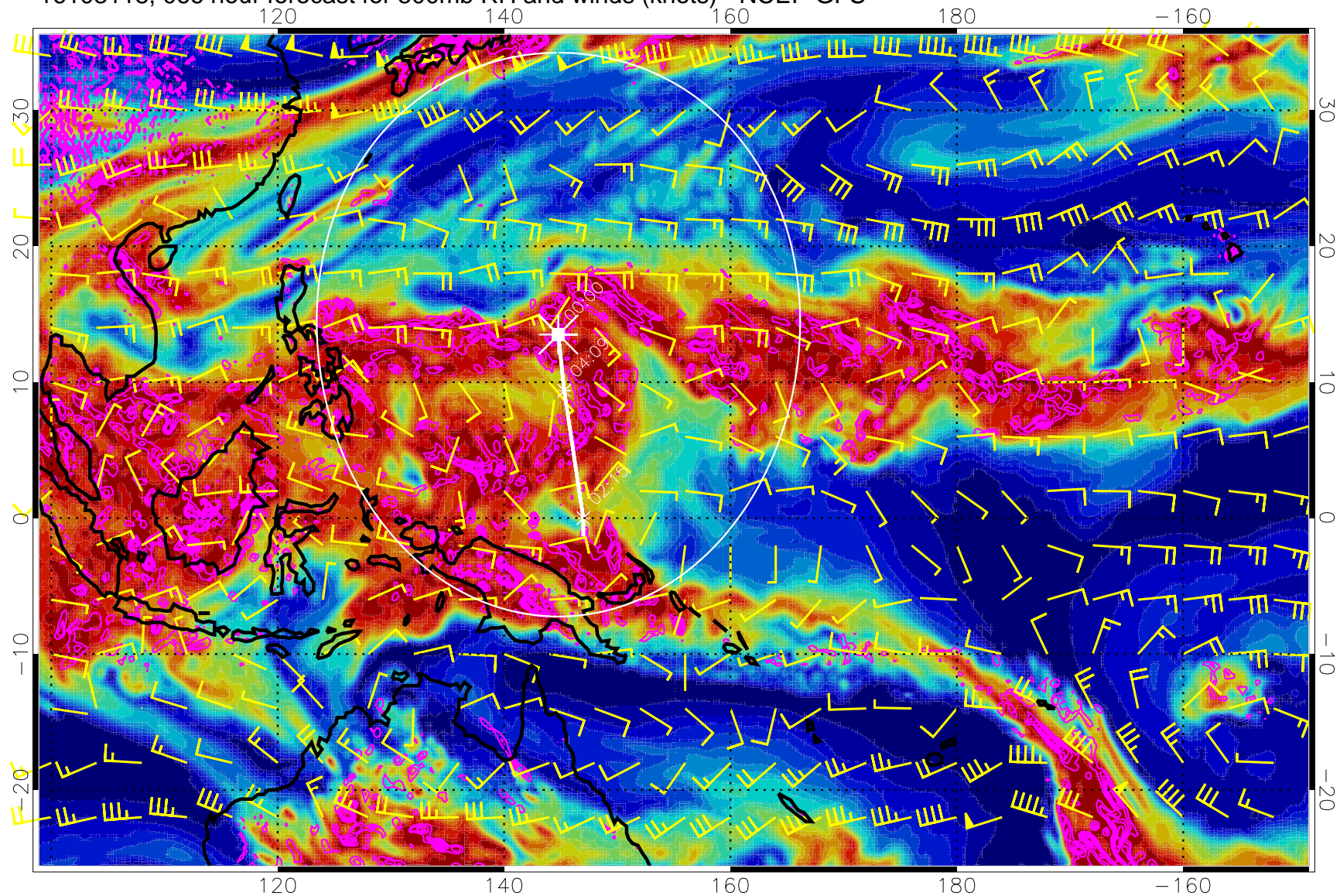
16103112, 060 hour forecast for 500mb RH and winds (knots) - NCEP GFS



Negative Omegas less than  $-0.3$ , contours of  $0.3$  Pa/s

Range ring of 2304 km

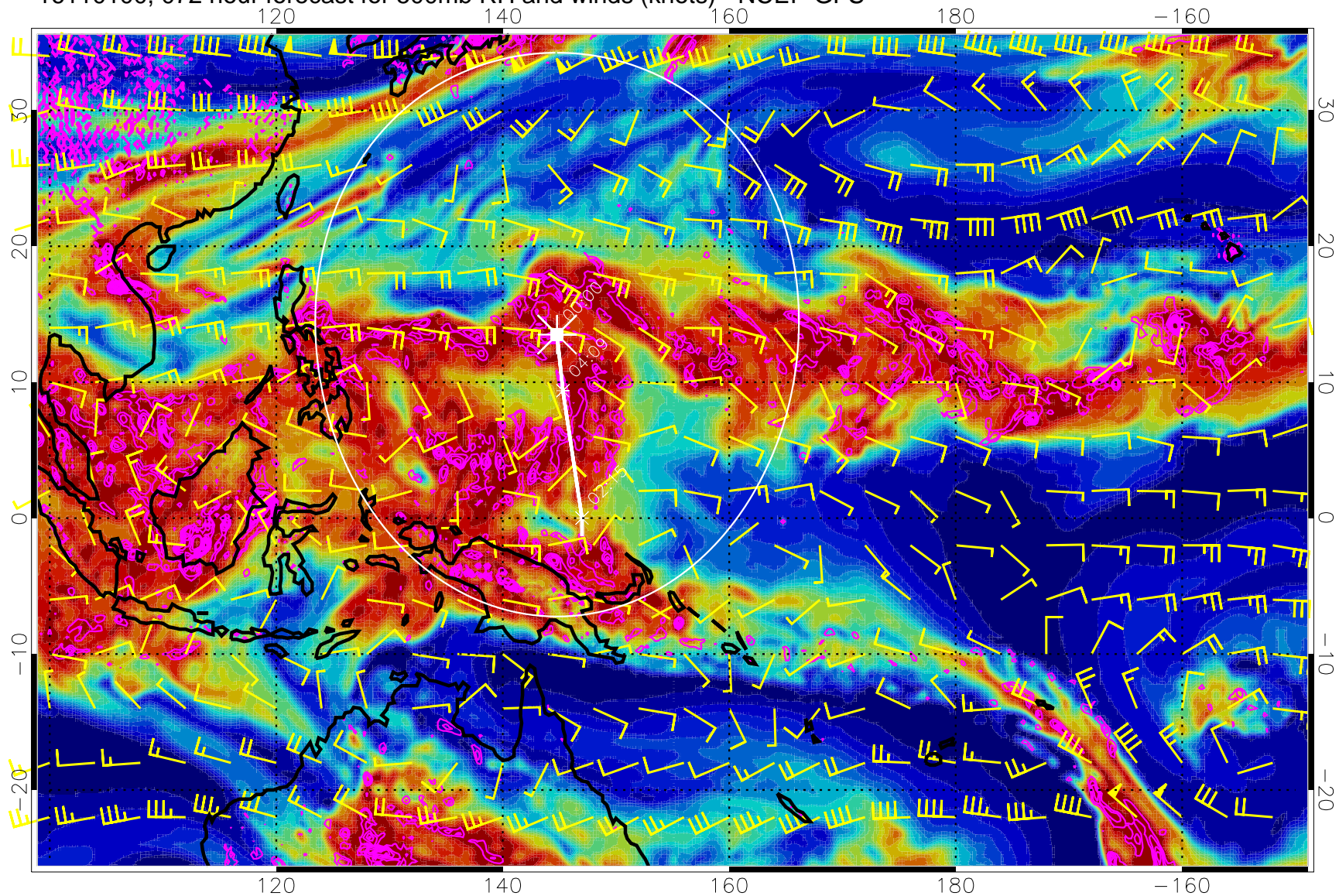
16103118, 066 hour forecast for 500mb RH and winds (knots) - NCEP GFS



Negative Omegas less than  $-0.3$ , contours of  $0.3$  Pa/s

Range ring of 2304 km

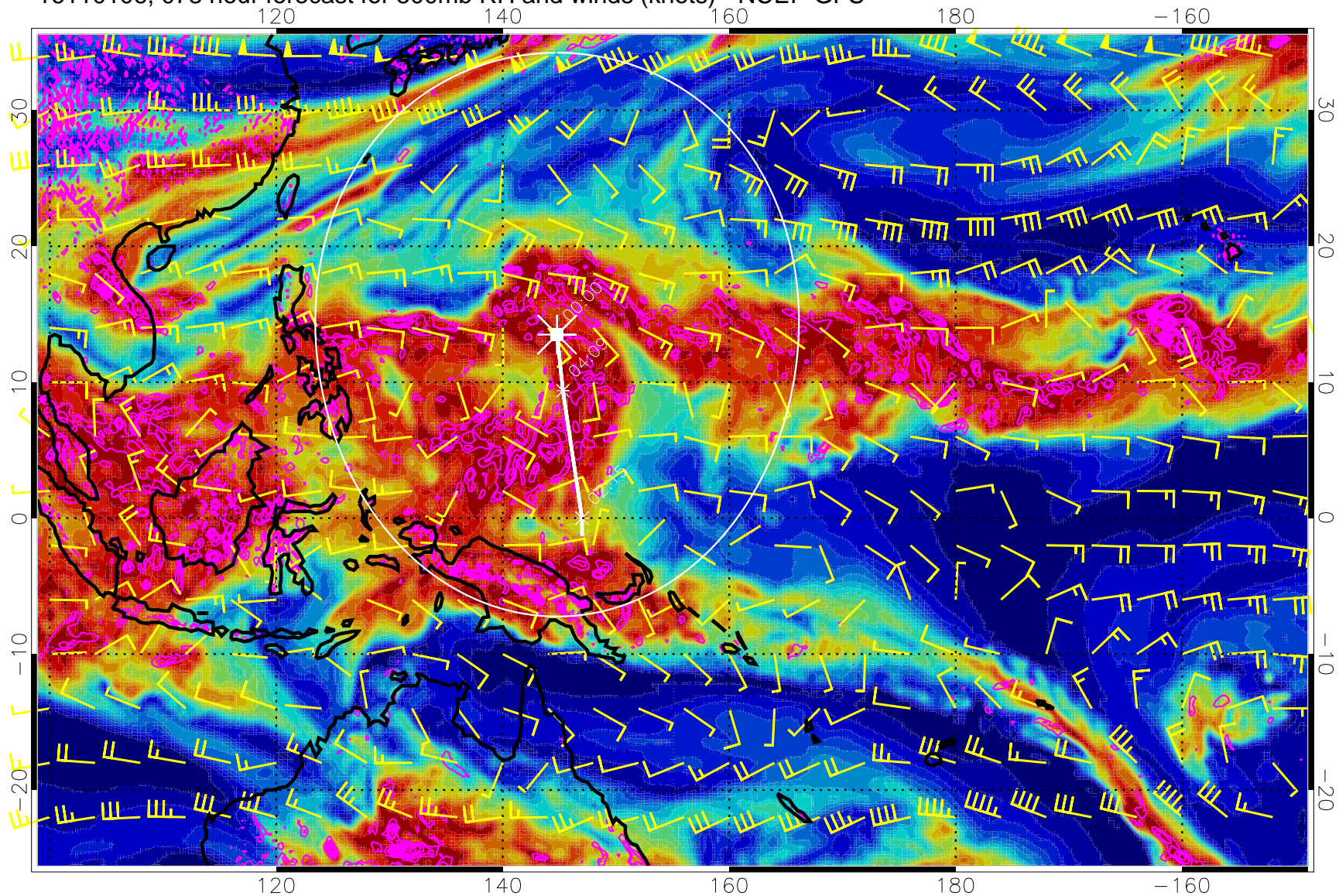
16110100, 072 hour forecast for 500mb RH and winds (knots) - NCEP GFS



Negative Omegas less than  $-0.3$ , contours of  $0.3$  Pa/s

Range ring of 2304 km

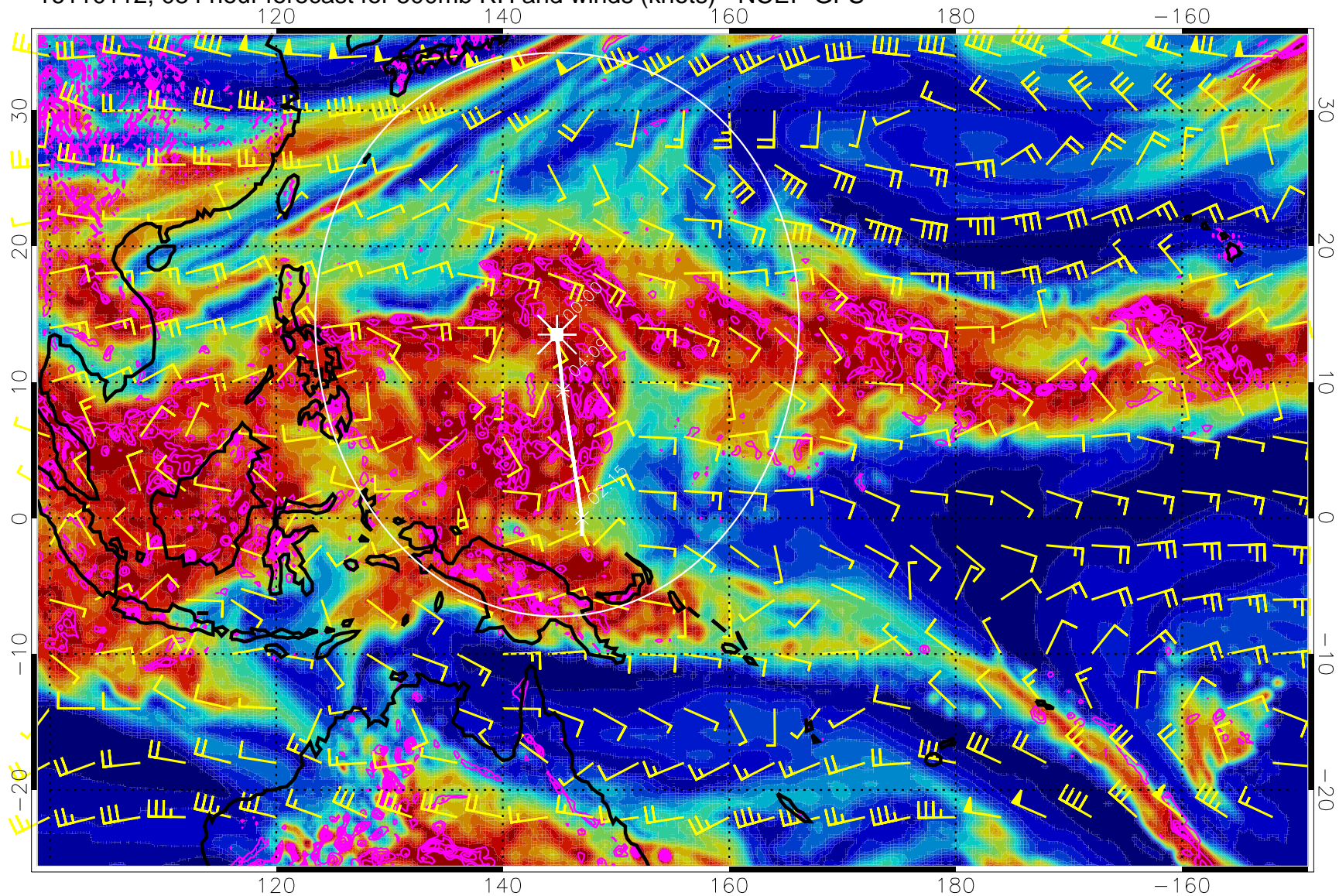
16110106, 078 hour forecast for 500mb RH and winds (knots) - NCEP GFS



Negative Omegas less than  $-0.3$ , contours of  $0.3$  Pa/s

Range ring of 2304 km

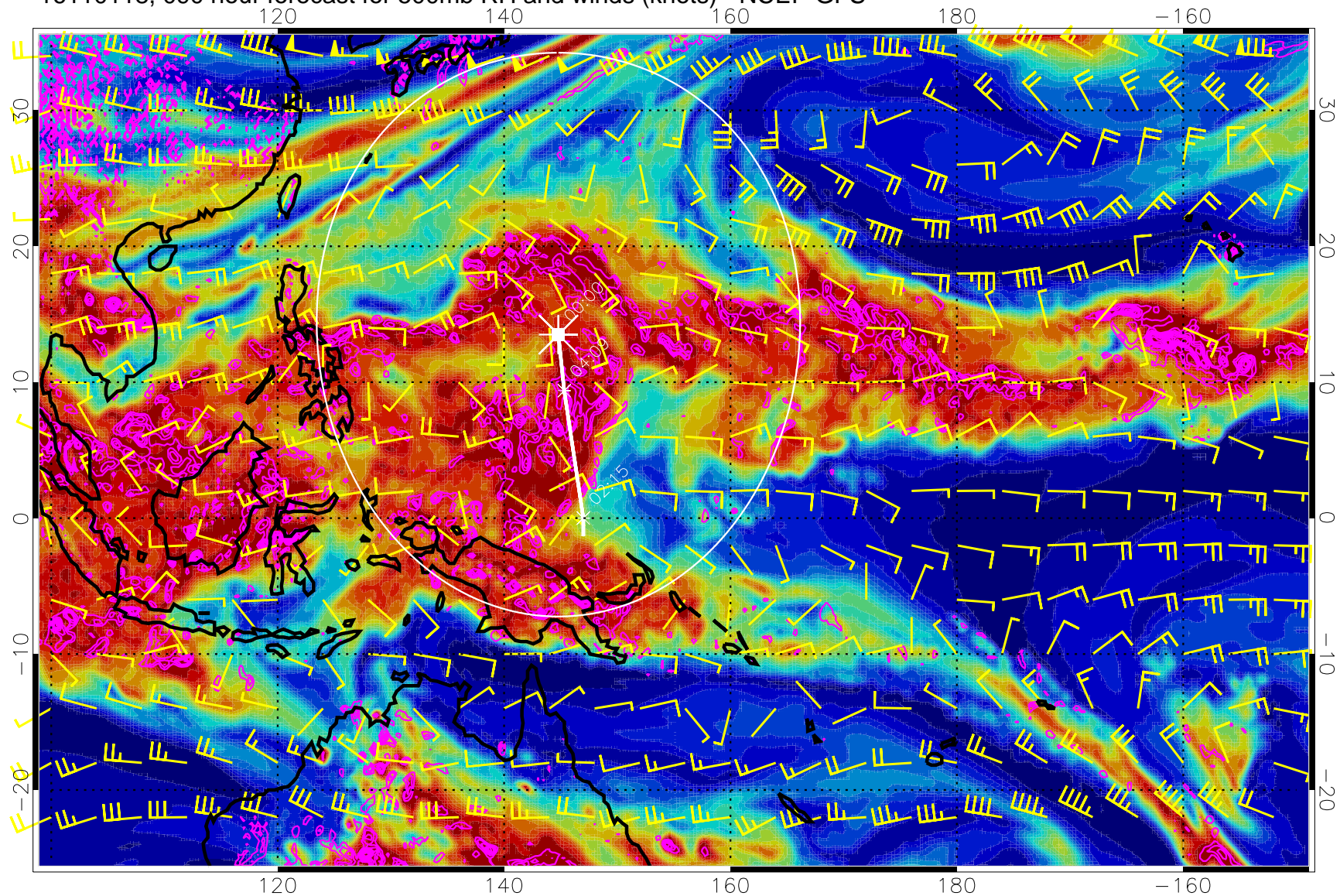
16110112, 084 hour forecast for 500mb RH and winds (knots) - NCEP GFS



Negative Omegas less than  $-0.3$ , contours of  $0.3$  Pa/s

Range ring of 2304 km

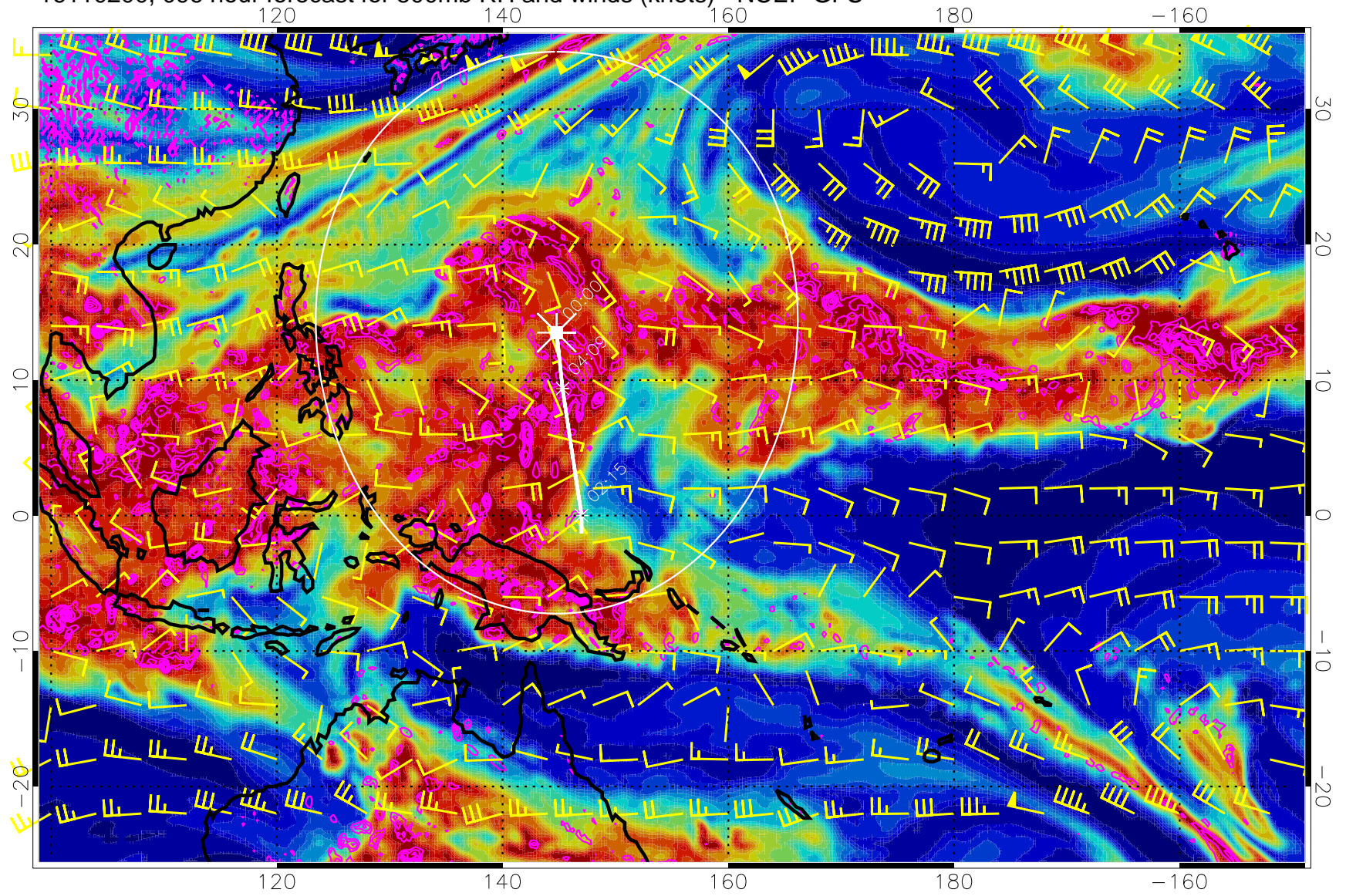
16110118, 090 hour forecast for 500mb RH and winds (knots) - NCEP GFS



Negative Omegas less than  $-0.3$ , contours of  $0.3$  Pa/s

Range ring of 2304 km

16110200, 096 hour forecast for 500mb RH and winds (knots) - NCEP GFS

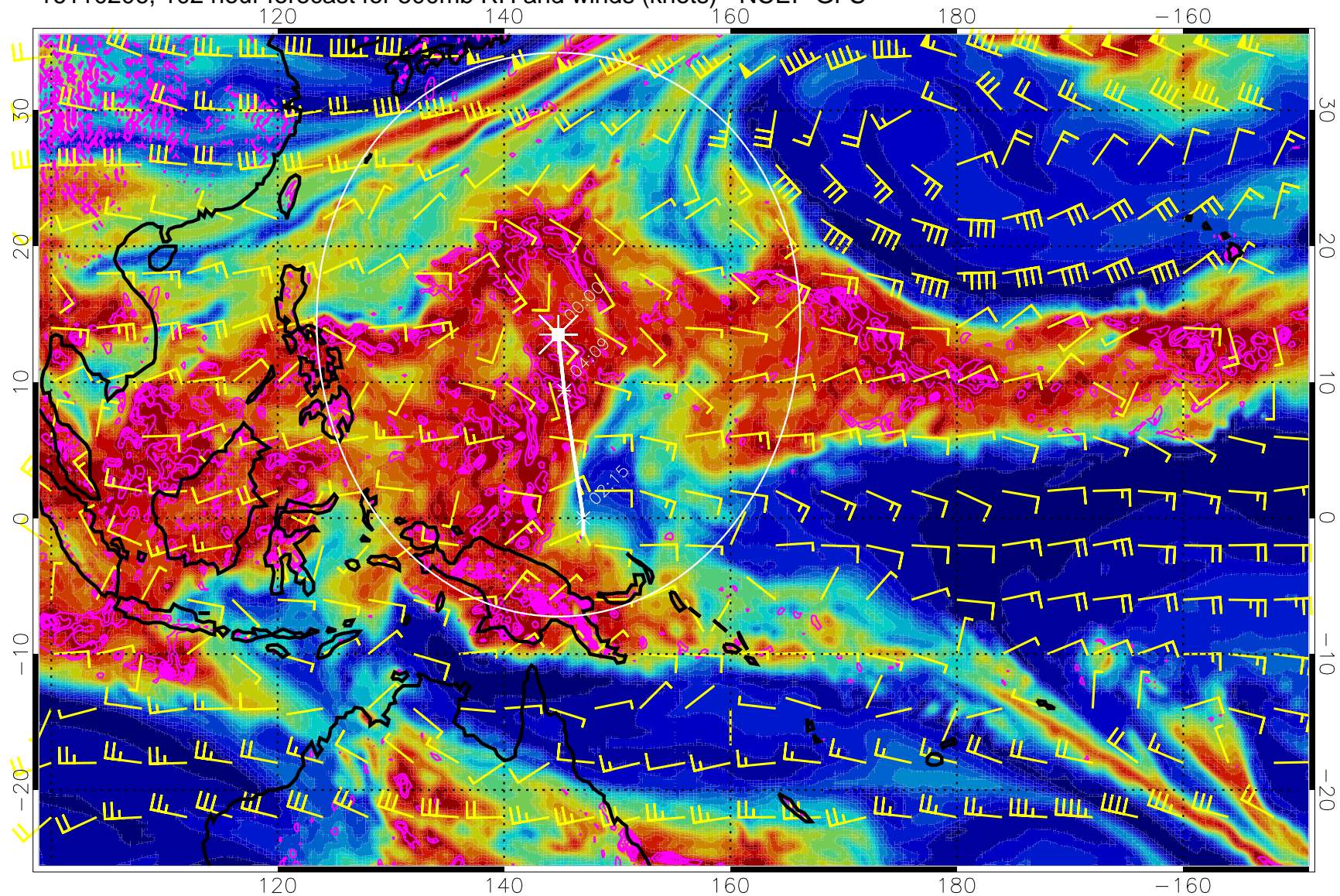


Negative Omegas less than  $-0.3$ , contours of  $0.3$  Pa/s

Range ring of 2304 km



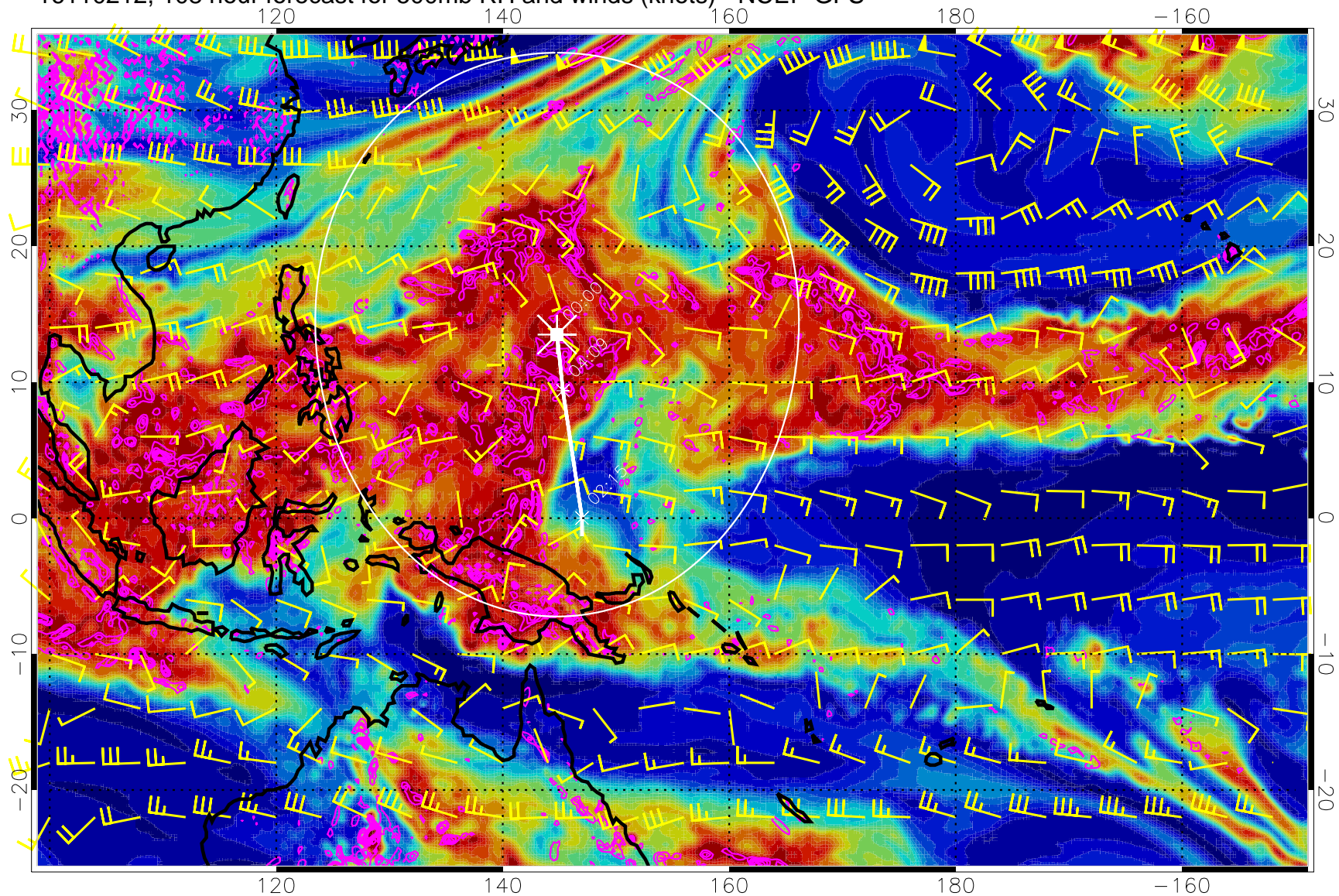
16110206, 102 hour forecast for 500mb RH and winds (knots) - NCEP GFS



Negative Omegas less than  $-0.3$ , contours of  $0.3$  Pa/s

Range ring of 2304 km

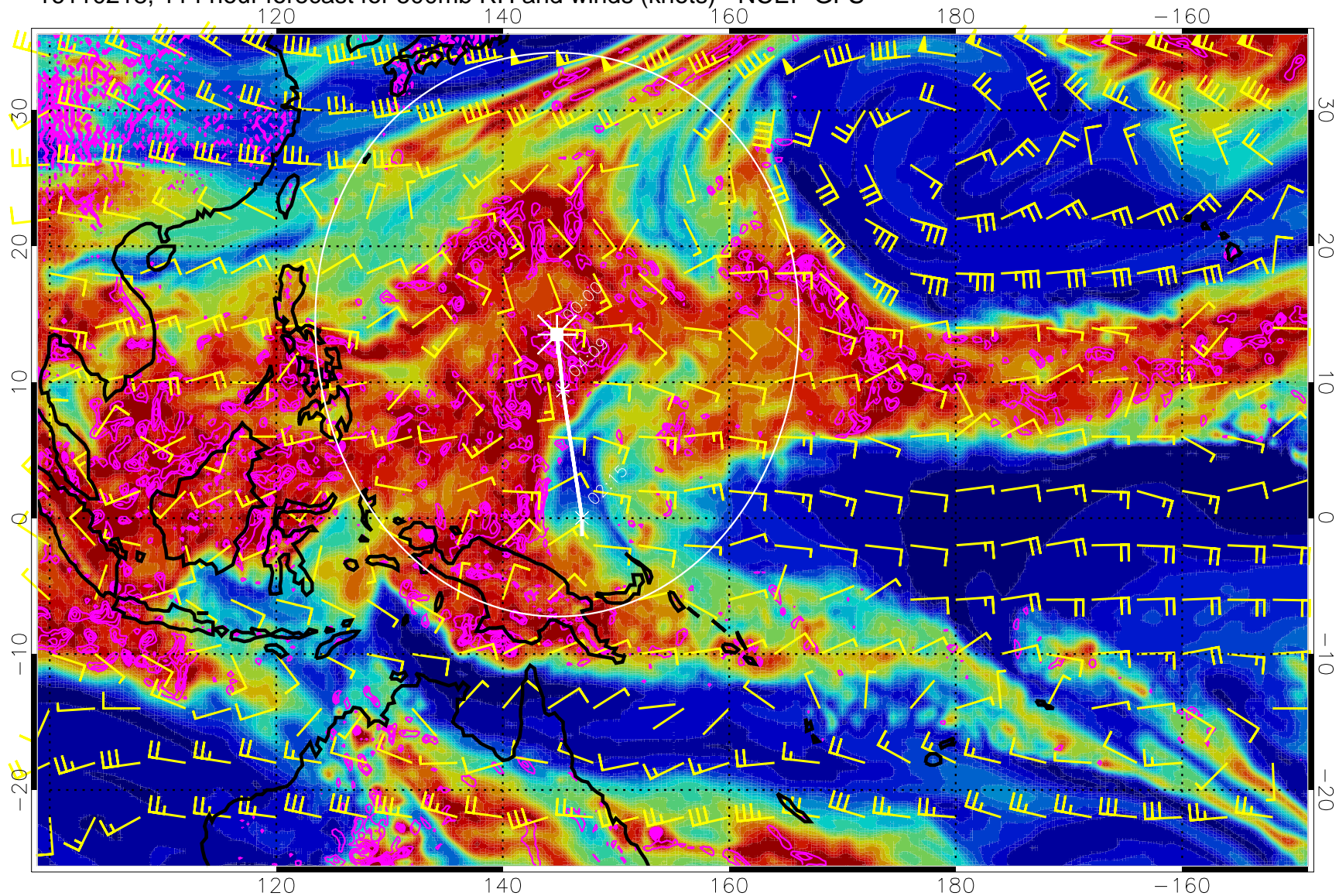
16110212, 108 hour forecast for 500mb RH and winds (knots) - NCEP GFS



Negative Omegas less than  $-0.3$ , contours of  $0.3 \text{ Pa/s}$

Range ring of 2304 km

16110218, 114 hour forecast for 500mb RH and winds (knots) - NCEP GFS

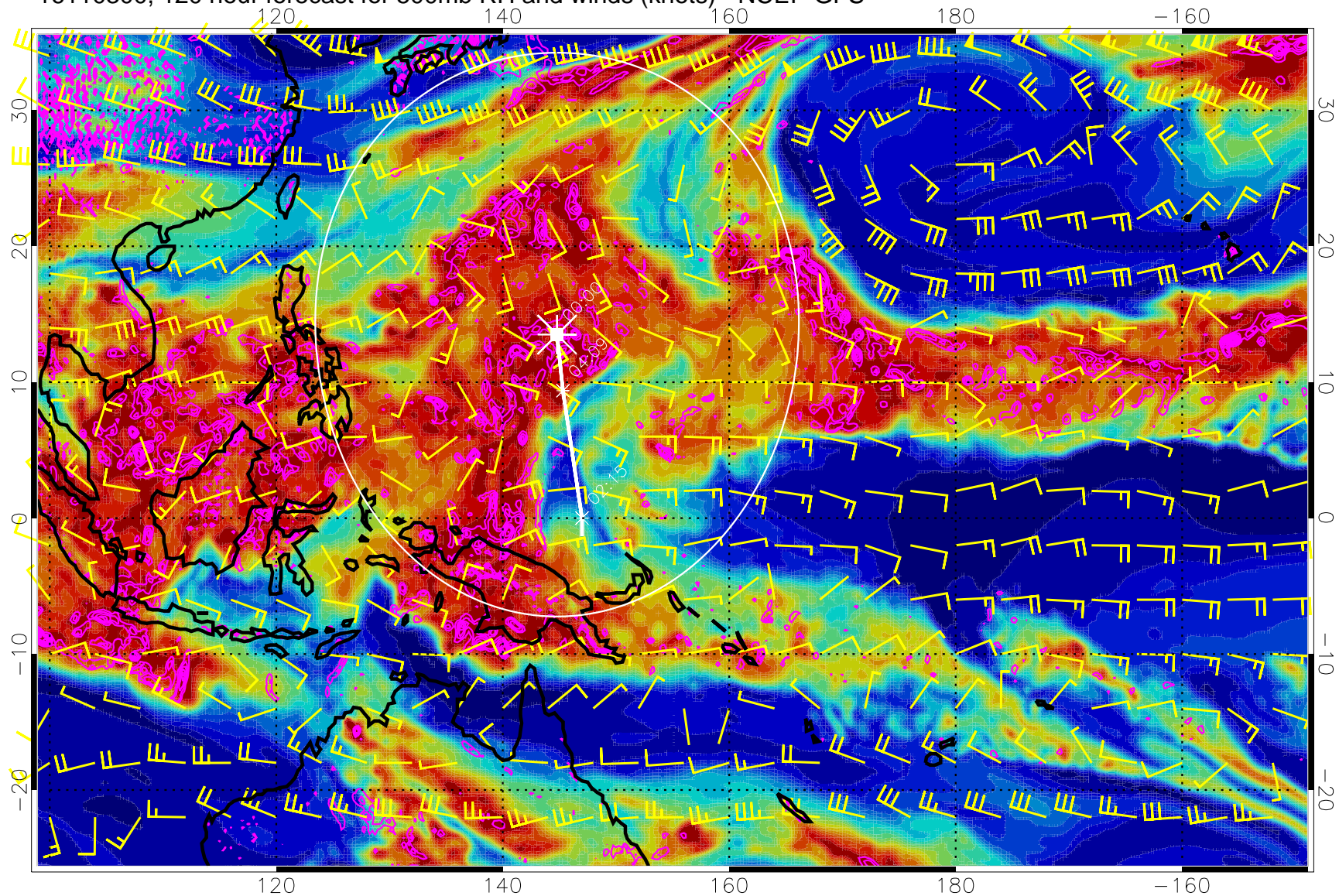


0 20 40 60 80 100  
RH, %

Negative Omegas less than  $-0.3$ , contours of  $0.3$  Pa/s

Range ring of 2304 km

16110300, 120 hour forecast for 500mb RH and winds (knots) - NCEP GFS



Negative Omegas less than  $-0.3$ , contours of  $0.3$  Pa/s

Range ring of 2304 km