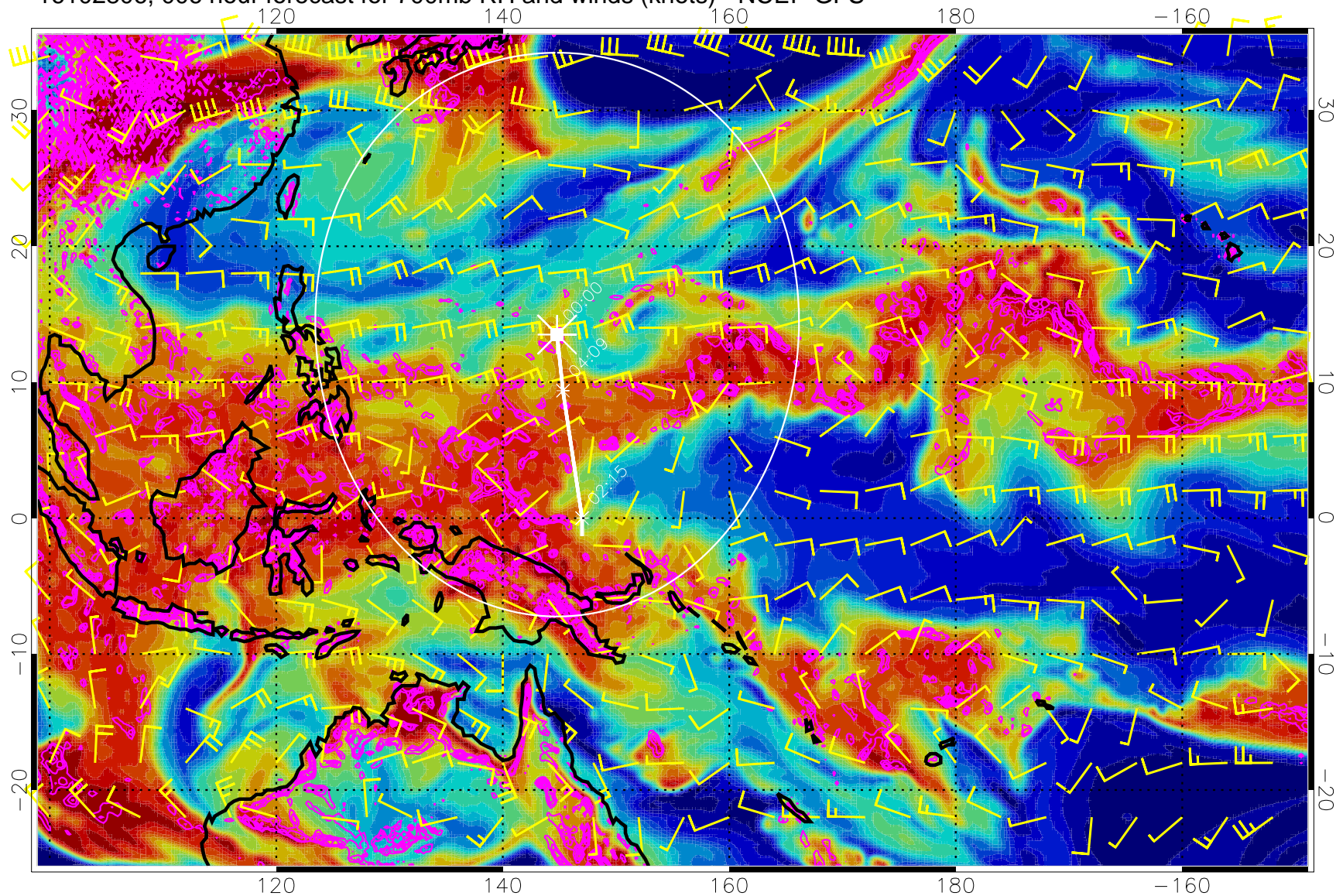


16102806, 006 hour forecast for 700mb RH and winds (knots) - NCEP GFS

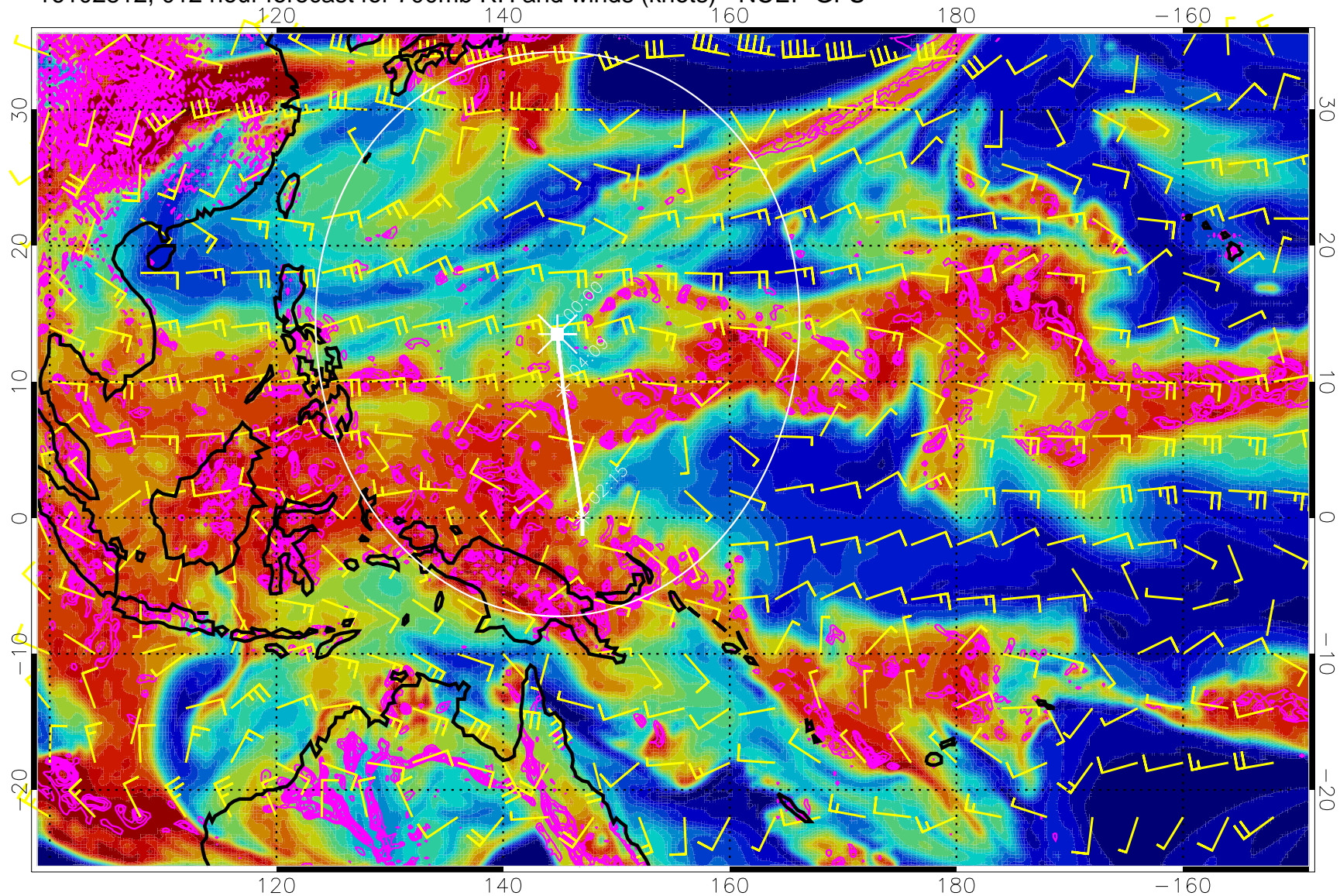


Negative Omegas less than  $-0.3$ , contours of  $0.3$  Pa/s

Range ring of 2304 km



16102812, 012 hour forecast for 700mb RH and winds (knots) - NCEP GFS

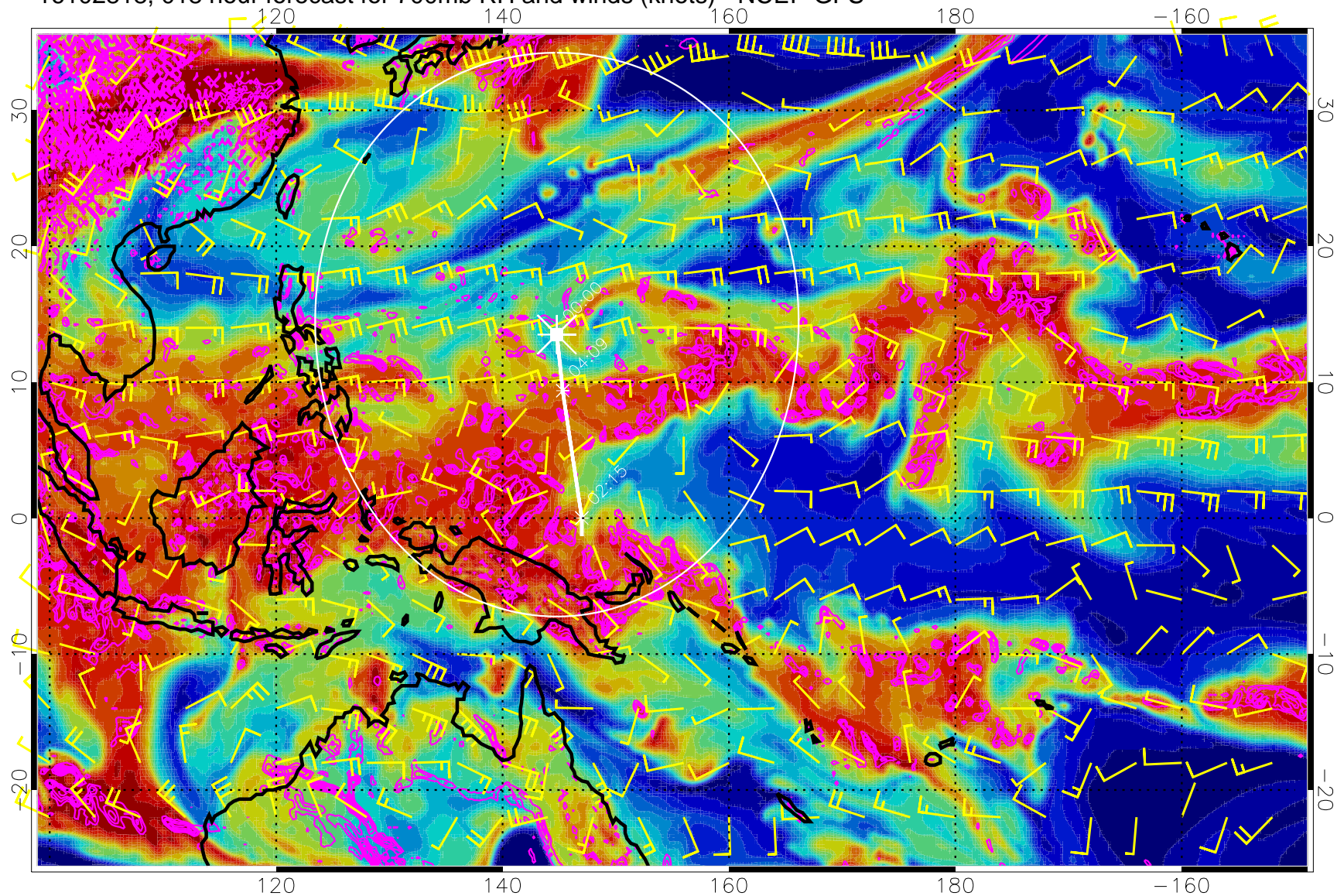


Negative Omegas less than  $-0.3$ , contours of  $0.3$  Pa/s

Range ring of 2304 km



16102818, 018 hour forecast for 700mb RH and winds (knots) - NCEP GFS

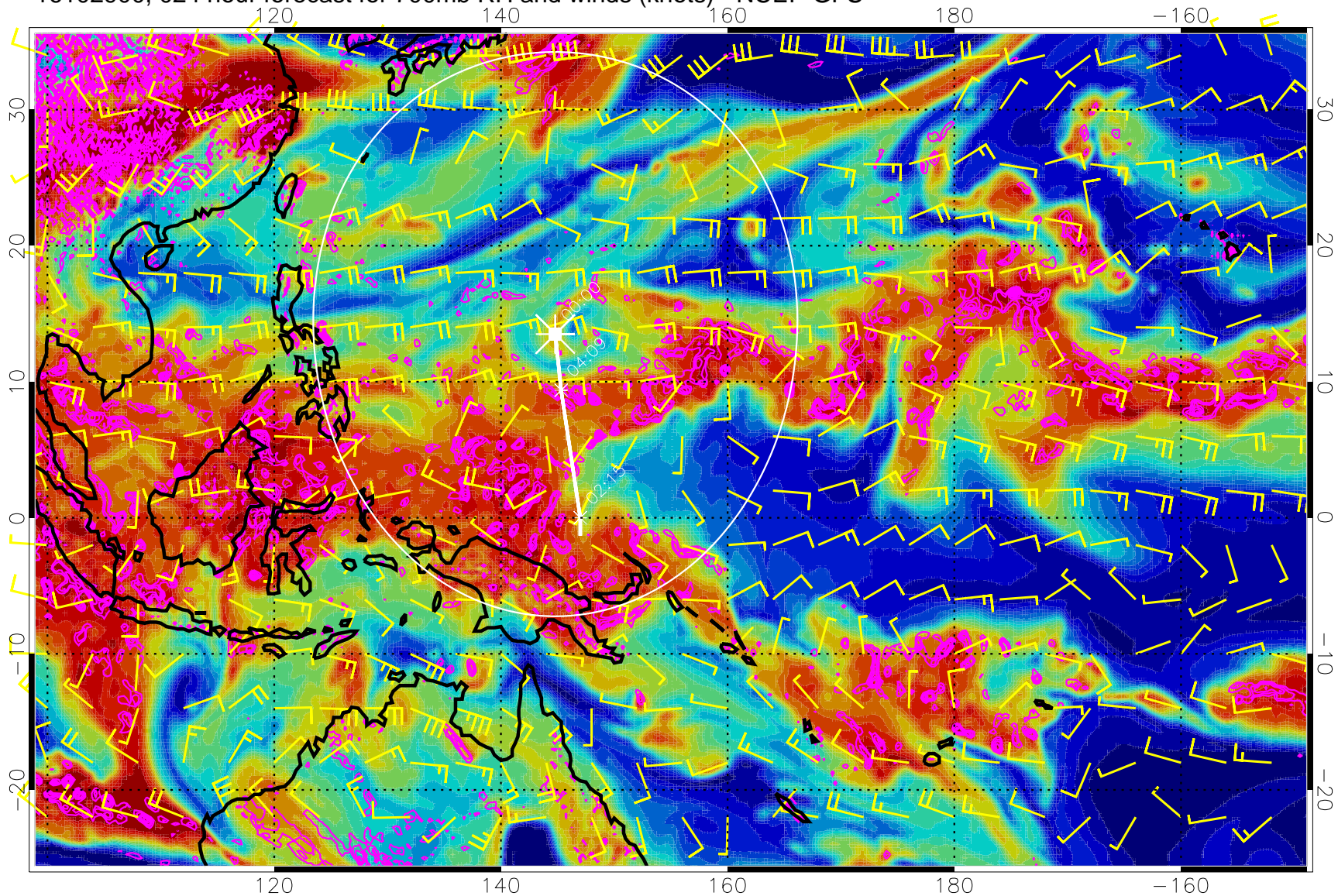


Negative Omegas less than  $-.3$ , contours of  $.3$  Pa/s

Range ring of 2304 km



16102900, 024 hour forecast for 700mb RH and winds (knots) - NCEP GFS



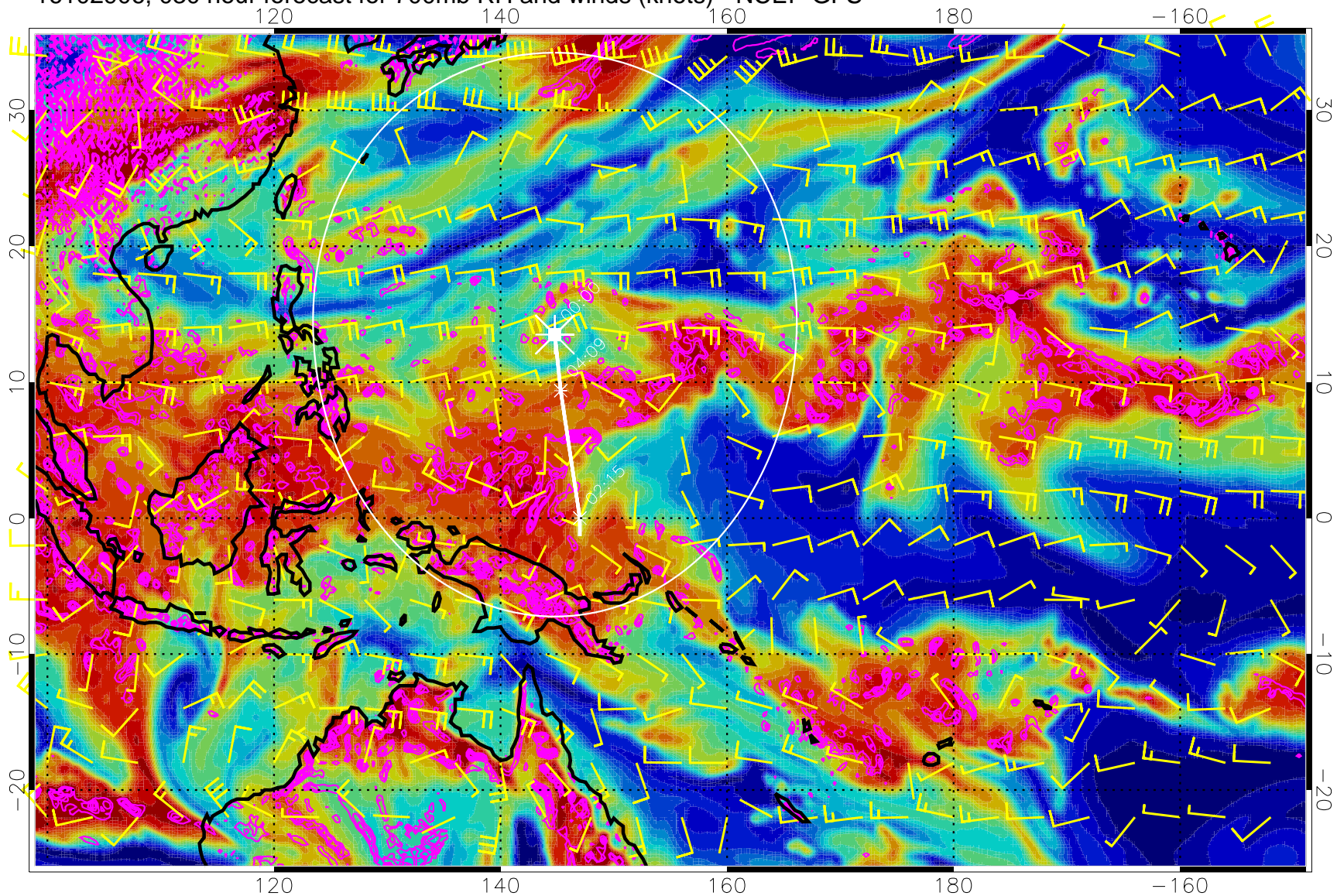
0 20 40 60 80 100  
RH, %

Negative Omegas less than  $-0.3$ , contours of  $0.3$  Pa/s

Range ring of 2304 km



16102906, 030 hour forecast for 700mb RH and winds (knots) - NCEP GFS



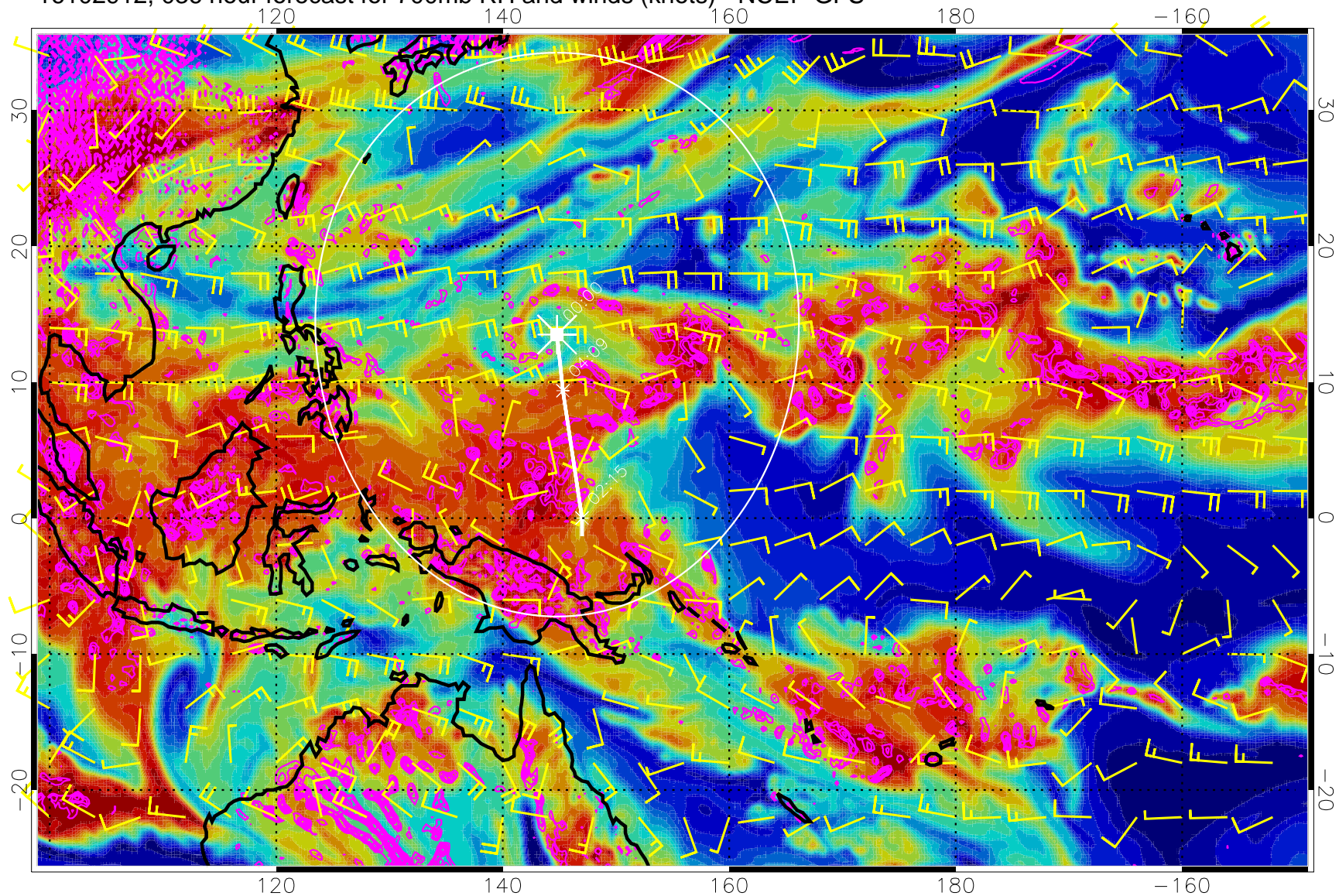
0 20 40 60 80 100  
RH, %

Negative Omegas less than  $-0.3$ , contours of  $0.3$  Pa/s

Range ring of 2304 km

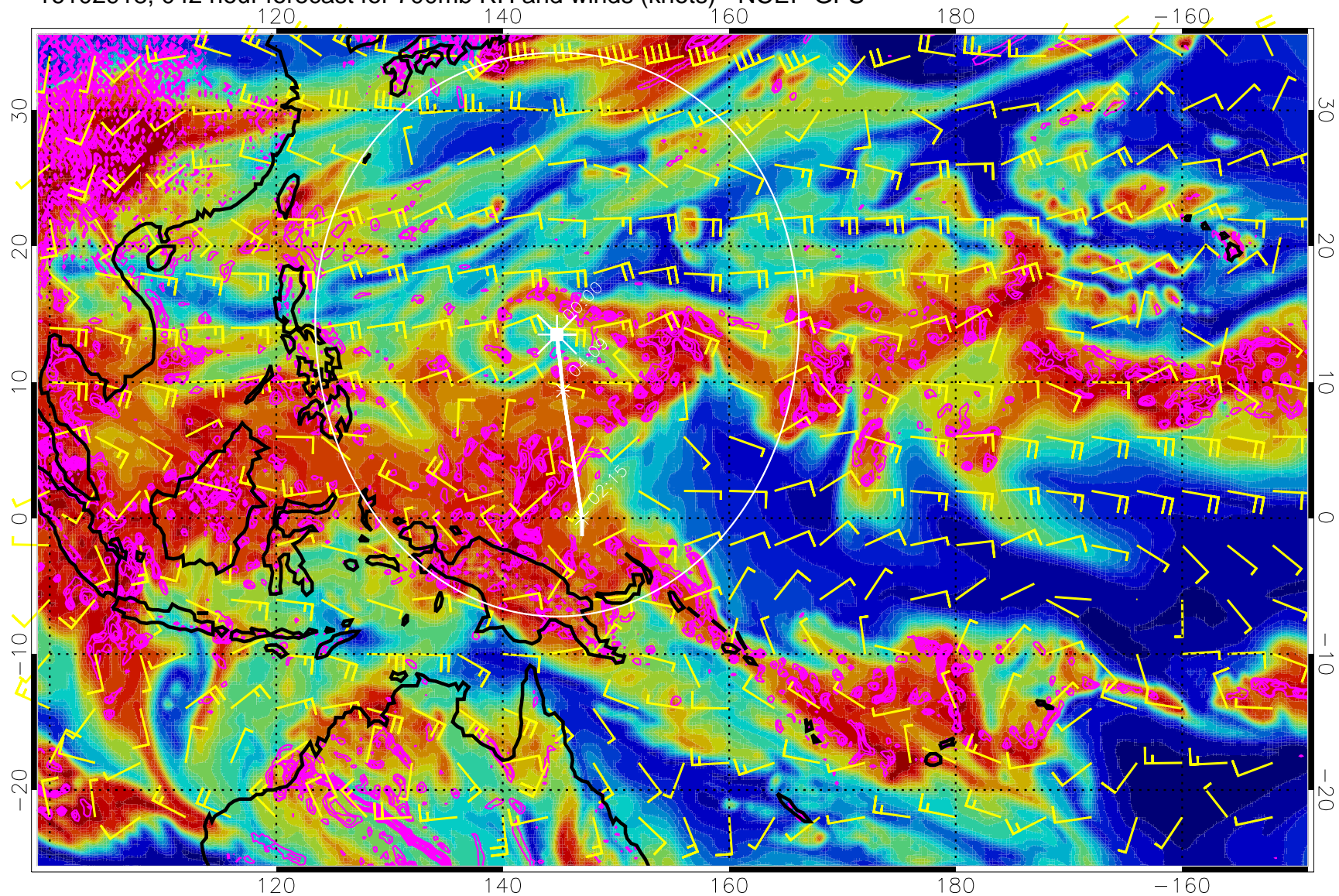


16102912, 036 hour forecast for 700mb RH and winds (knots) - NCEP GFS





16102918, 042 hour forecast for 700mb RH and winds (knots) - NCEP GFS

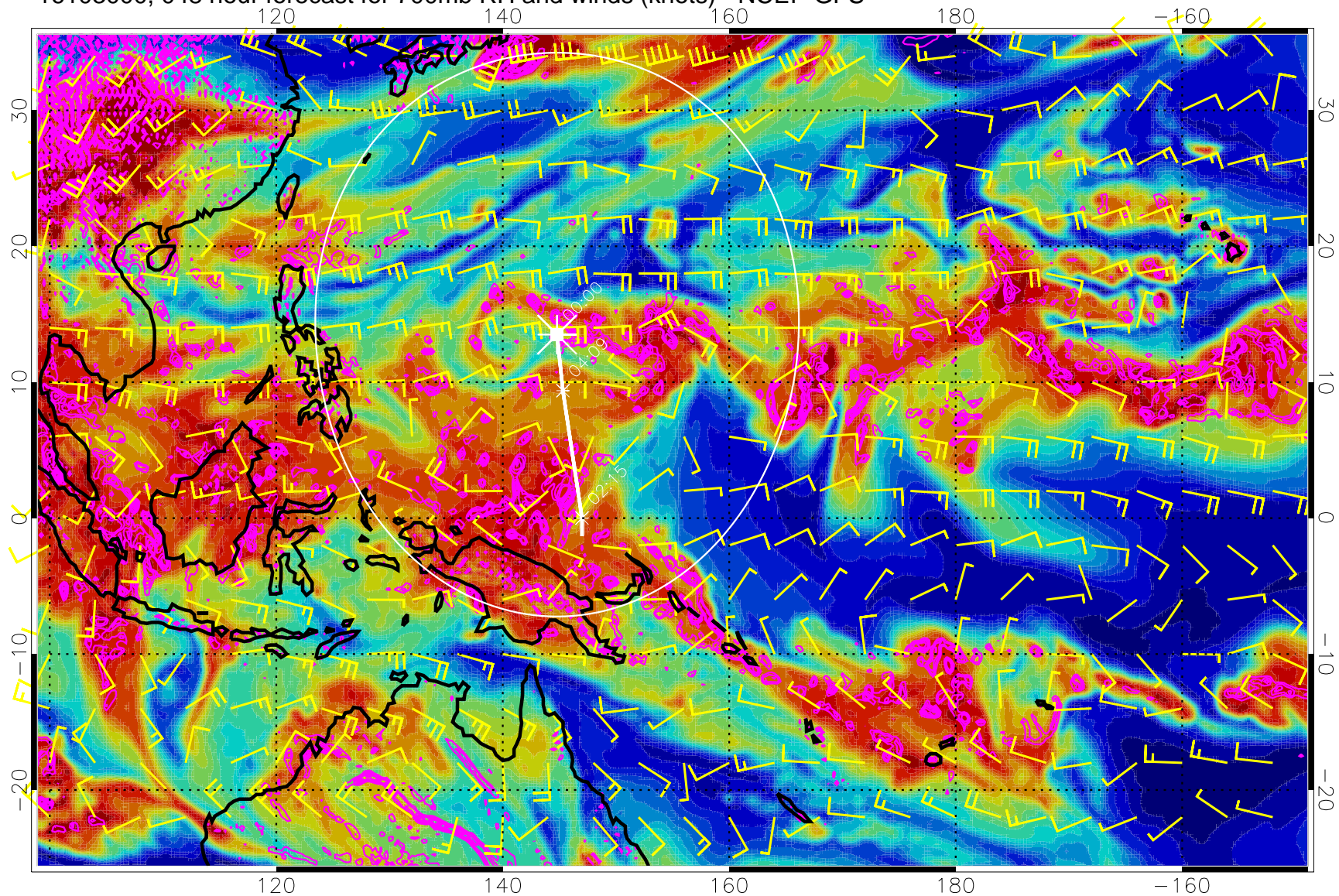


Negative Omegas less than  $-0.3$ , contours of  $0.3$  Pa/s

Range ring of 2304 km



16103000, 048 hour forecast for 700mb RH and winds (knots) - NCEP GFS



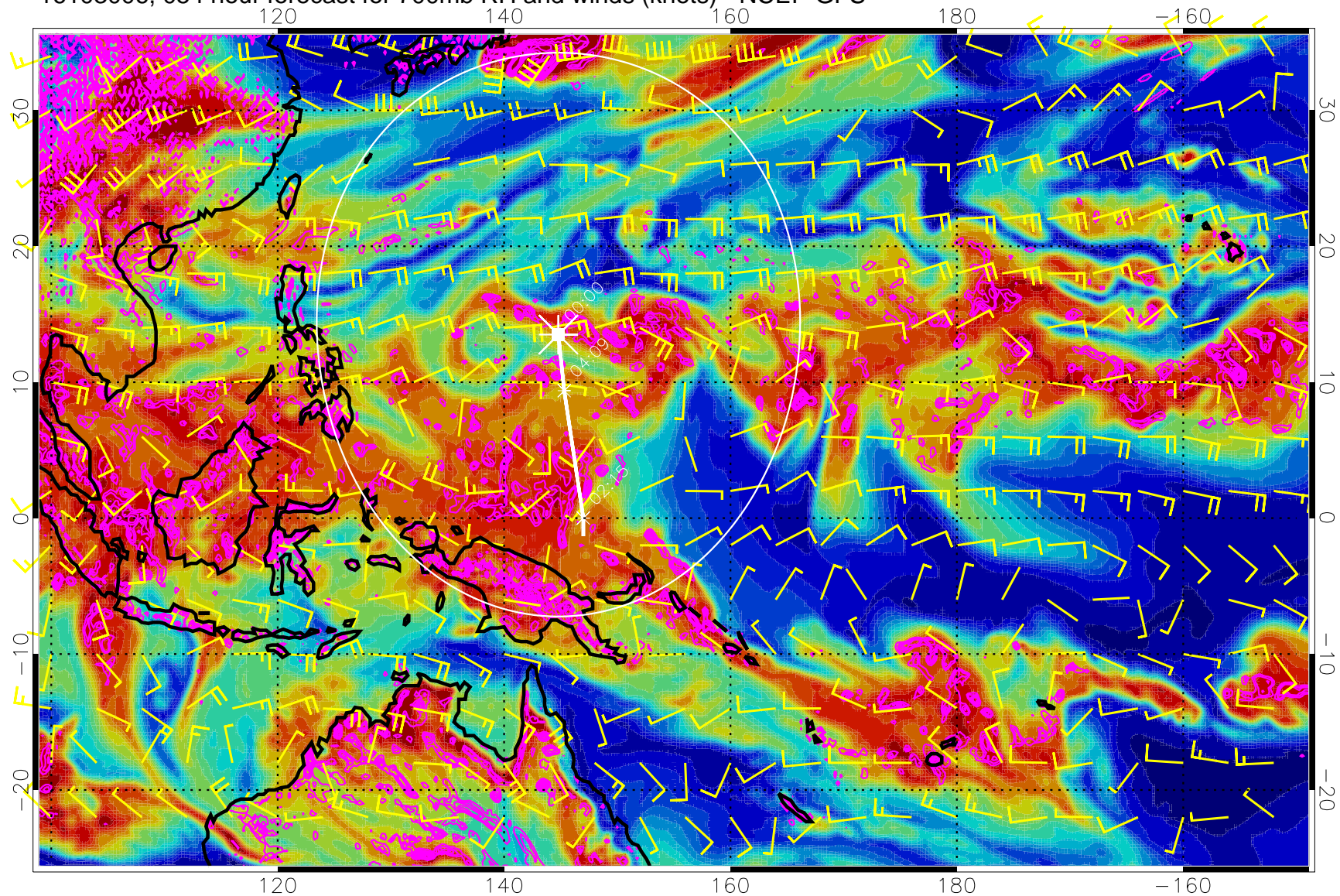
0 20 40 60 80 100  
RH, %

Negative Omegas less than  $-0.3$ , contours of  $0.3$  Pa/s

Range ring of 2304 km



16103006, 054 hour forecast for 700mb RH and winds (knots) - NCEP GFS



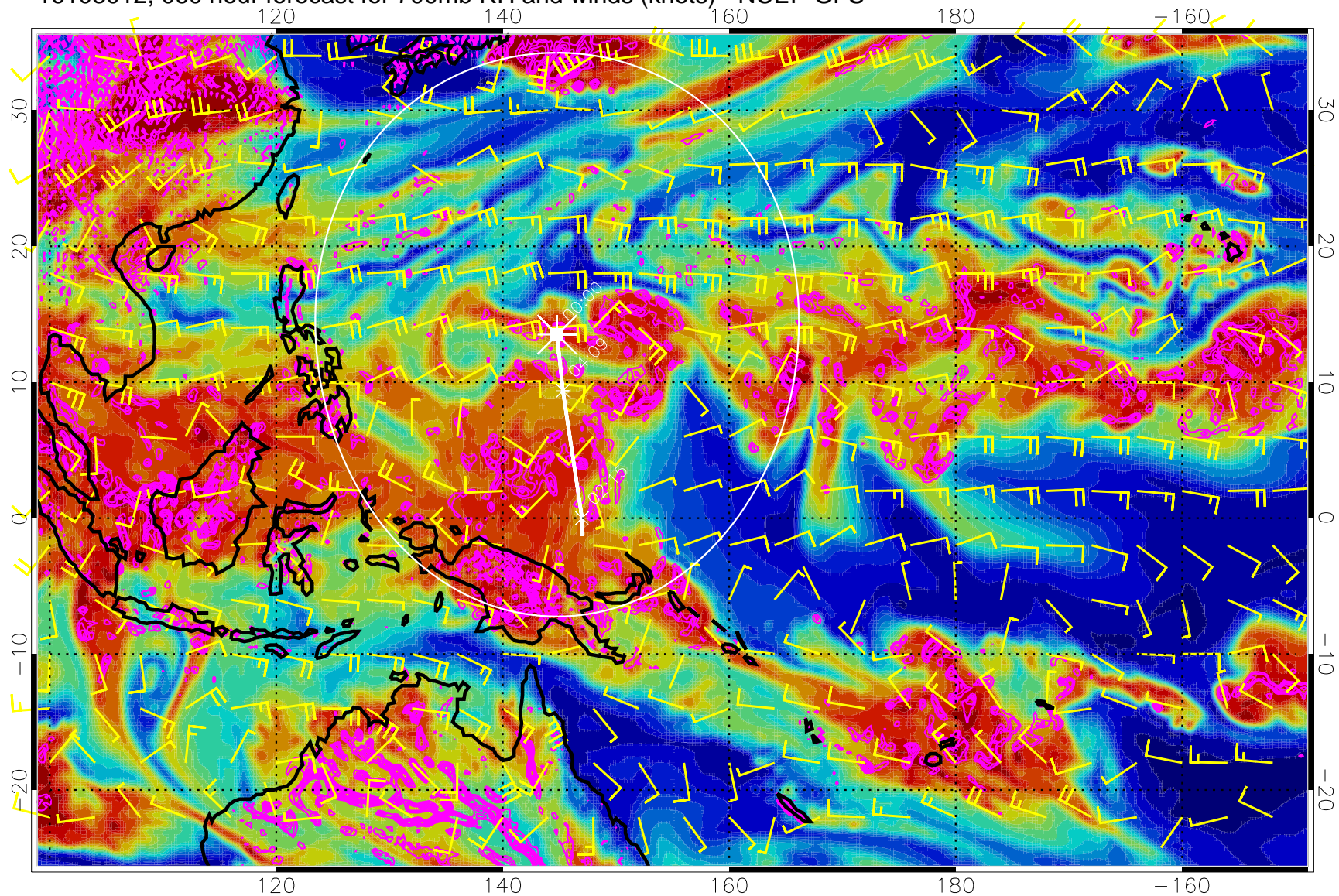
0 20 40 60 80 100  
RH, %

Negative Omegas less than  $-0.3$ , contours of  $0.3$  Pa/s

Range ring of 2304 km



16103012, 060 hour forecast for 700mb RH and winds (knots) - NCEP GFS

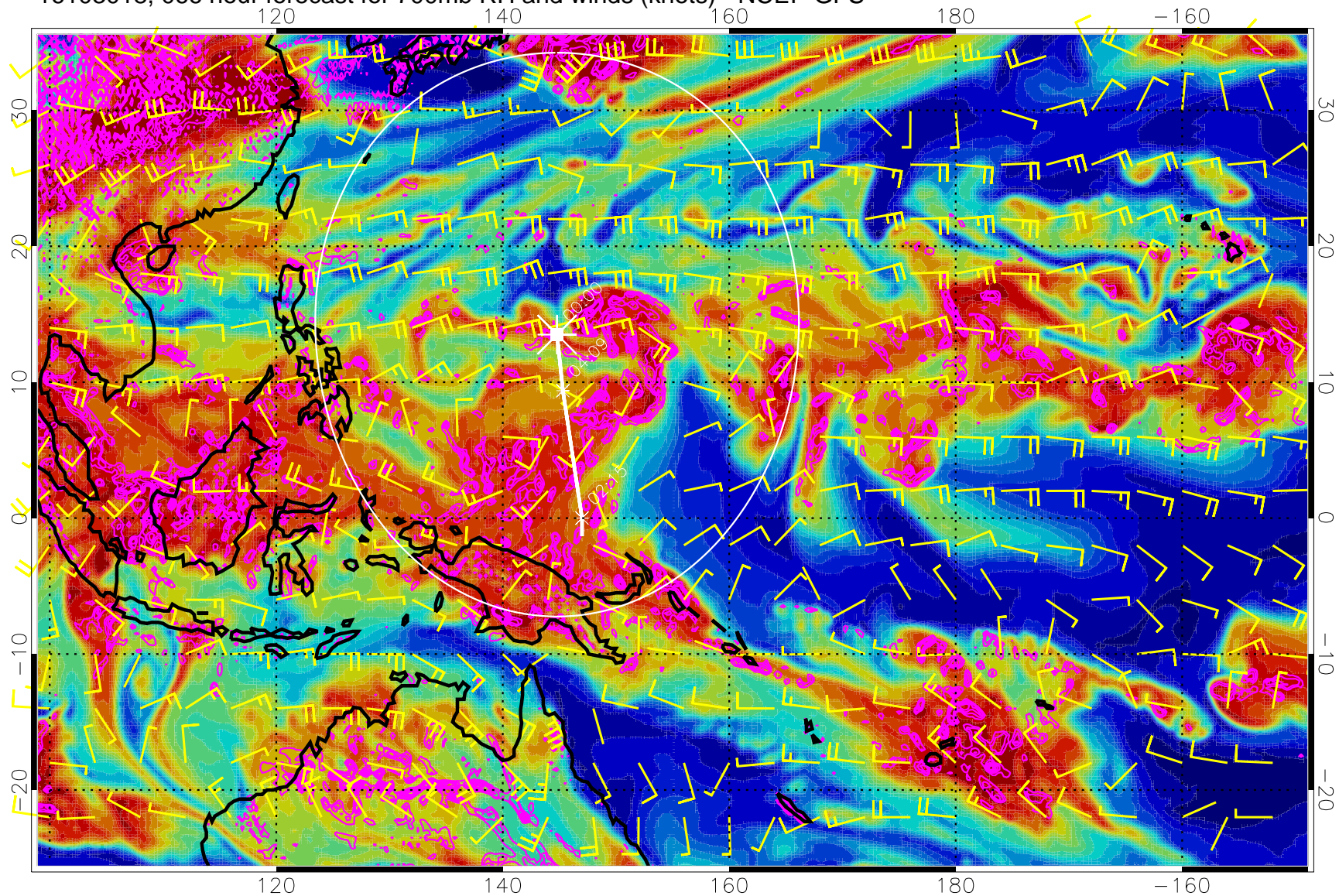


Negative Omegas less than  $-0.3$ , contours of  $0.3$  Pa/s

Range ring of 2304 km



16103018, 066 hour forecast for 700mb RH and winds (knots) - NCEP GFS

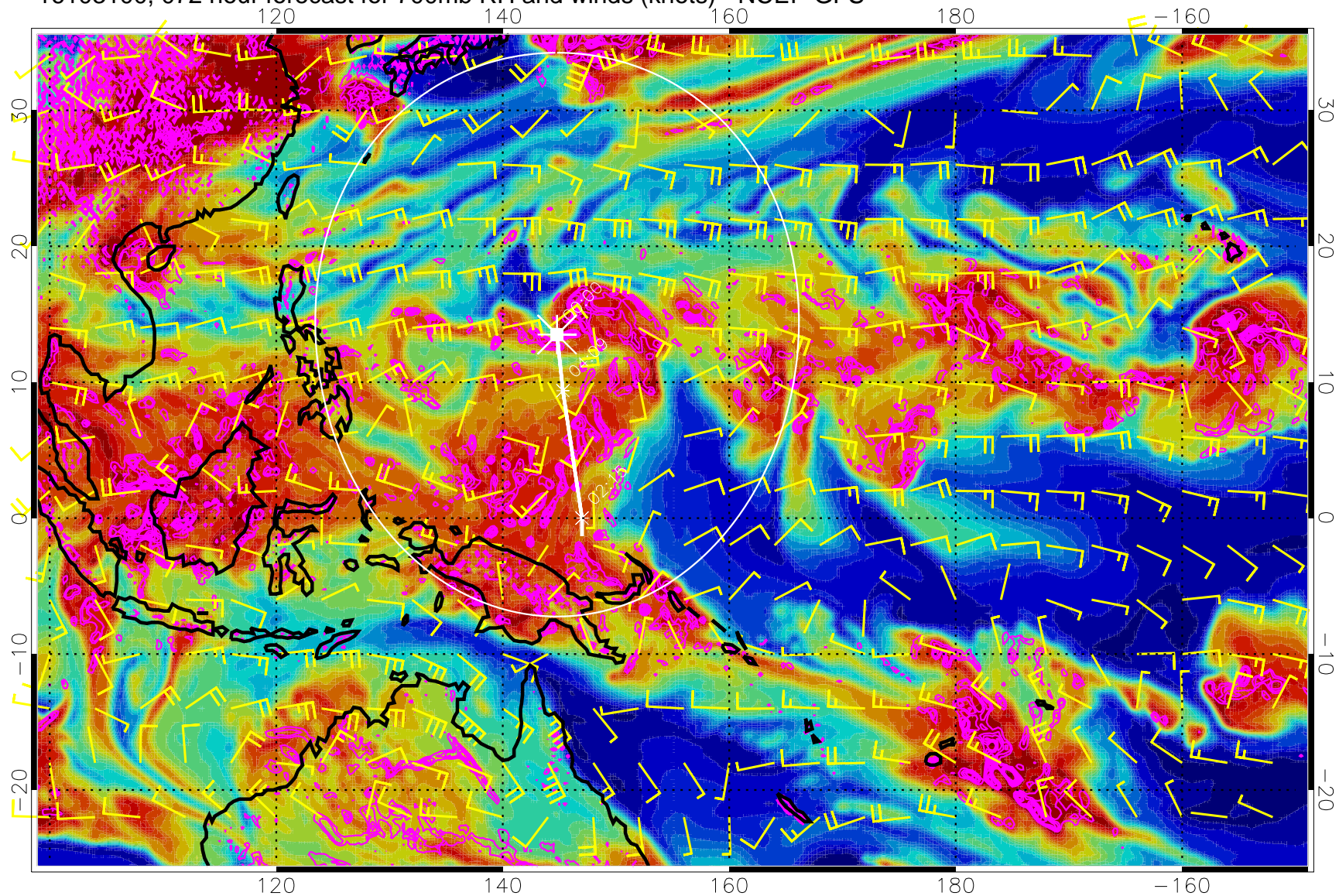


Negative Omegas less than  $-0.3$ , contours of  $0.3 \text{ Pa/s}$

Range ring of 2304 km



16103100, 072 hour forecast for 700mb RH and winds (knots) - NCEP GFS

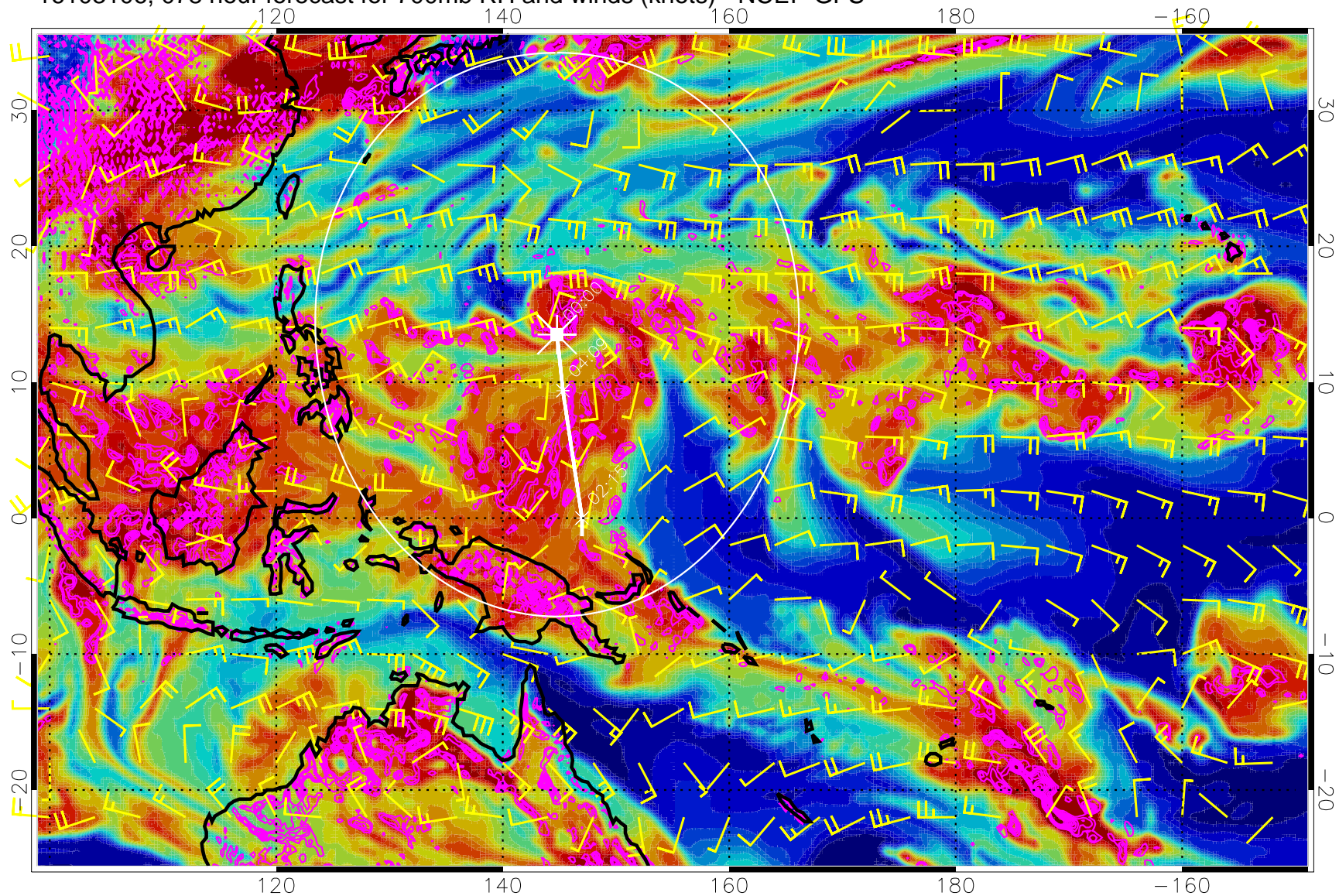


Negative Omegas less than  $-0.3$ , contours of  $0.3$  Pa/s

Range ring of 2304 km



16103106, 078 hour forecast for 700mb RH and winds (knots) - NCEP GFS

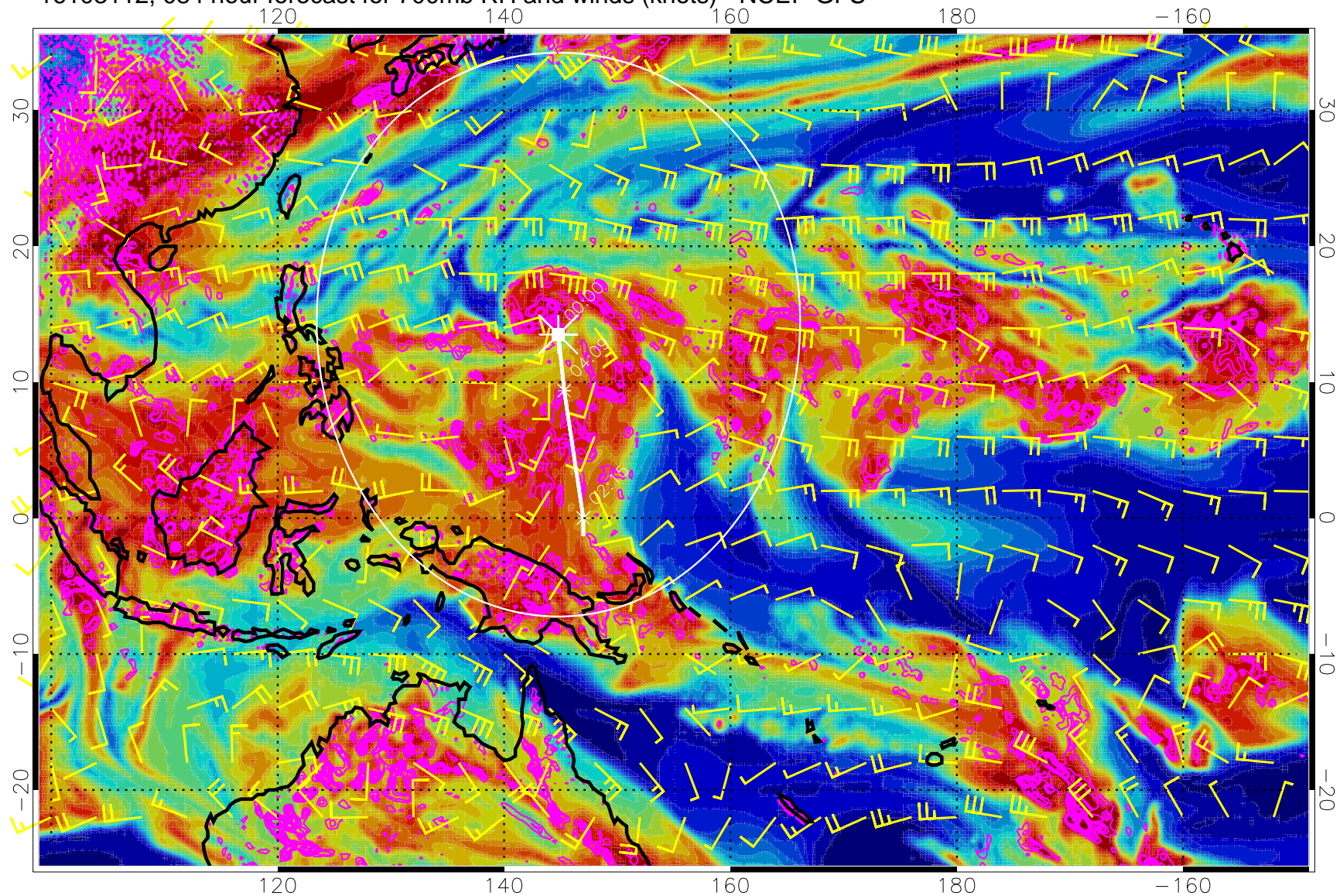


Negative Omegas less than  $-0.3$ , contours of  $0.3$  Pa/s

Range ring of 2304 km



16103112, 084 hour forecast for 700mb RH and winds (knots) - NCEP GFS

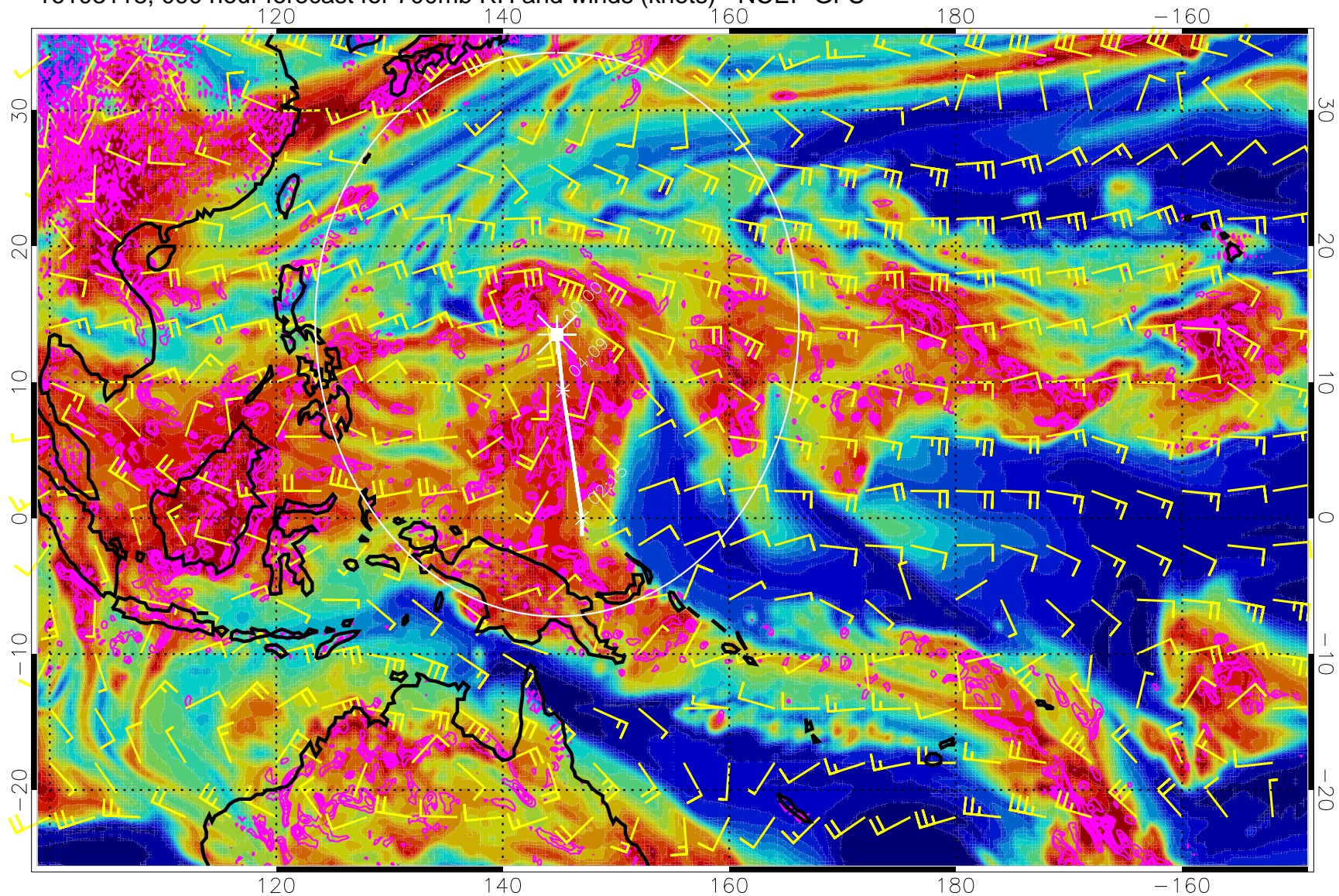


Negative Omegas less than  $-0.3$ , contours of  $0.3$  Pa/s

Range ring of 2304 km



16103118, 090 hour forecast for 700mb RH and winds (knots) - NCEP GFS



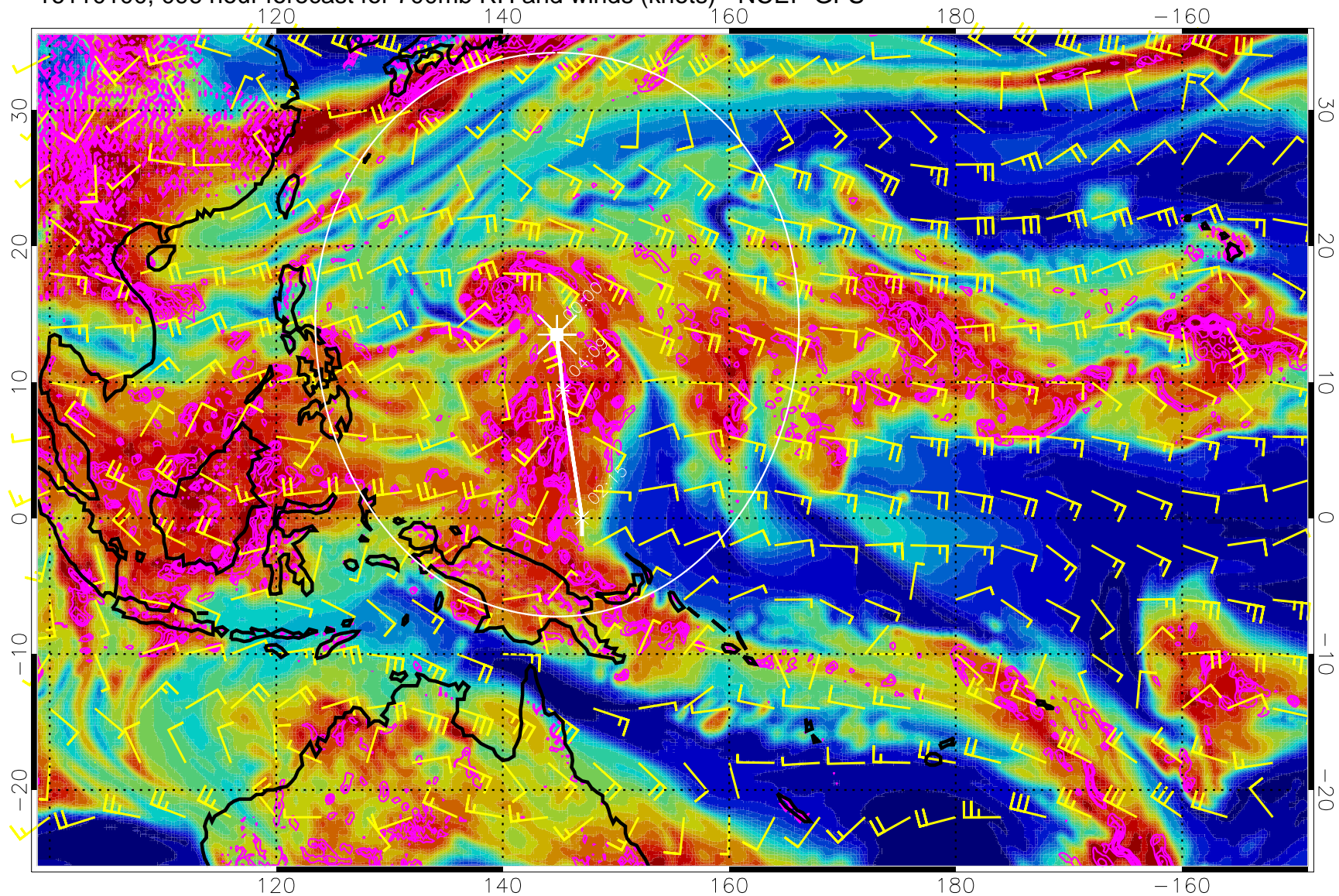
0 20 40 60 80 100  
RH, %

Negative Omegas less than  $-0.3$ , contours of  $0.3$  Pa/s

Range ring of 2304 km



16110100, 096 hour forecast for 700mb RH and winds (knots) - NCEP GFS

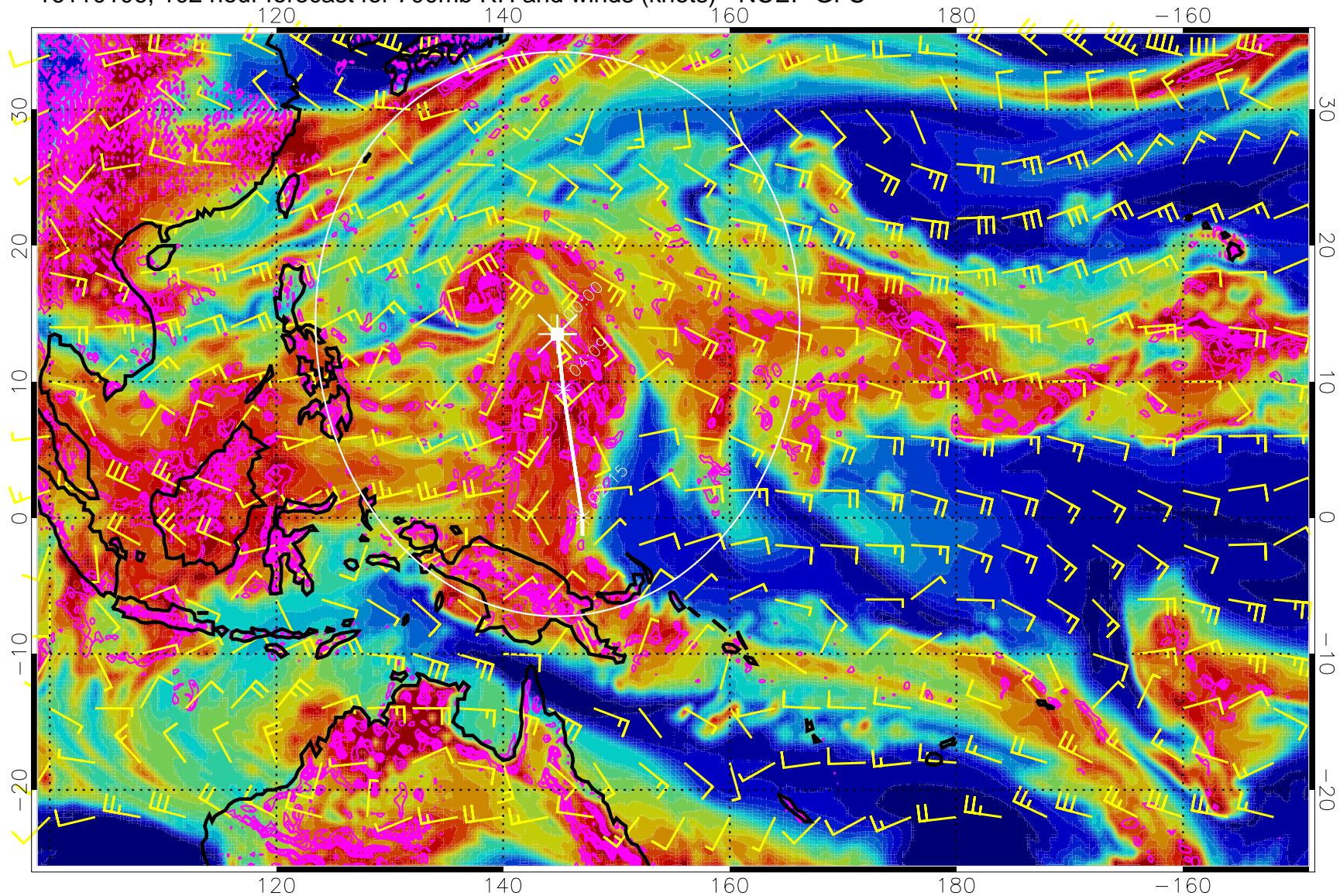


Negative Omegas less than  $-0.3$ , contours of  $0.3$  Pa/s

Range ring of 2304 km



16110106, 102 hour forecast for 700mb RH and winds (knots) - NCEP GFS



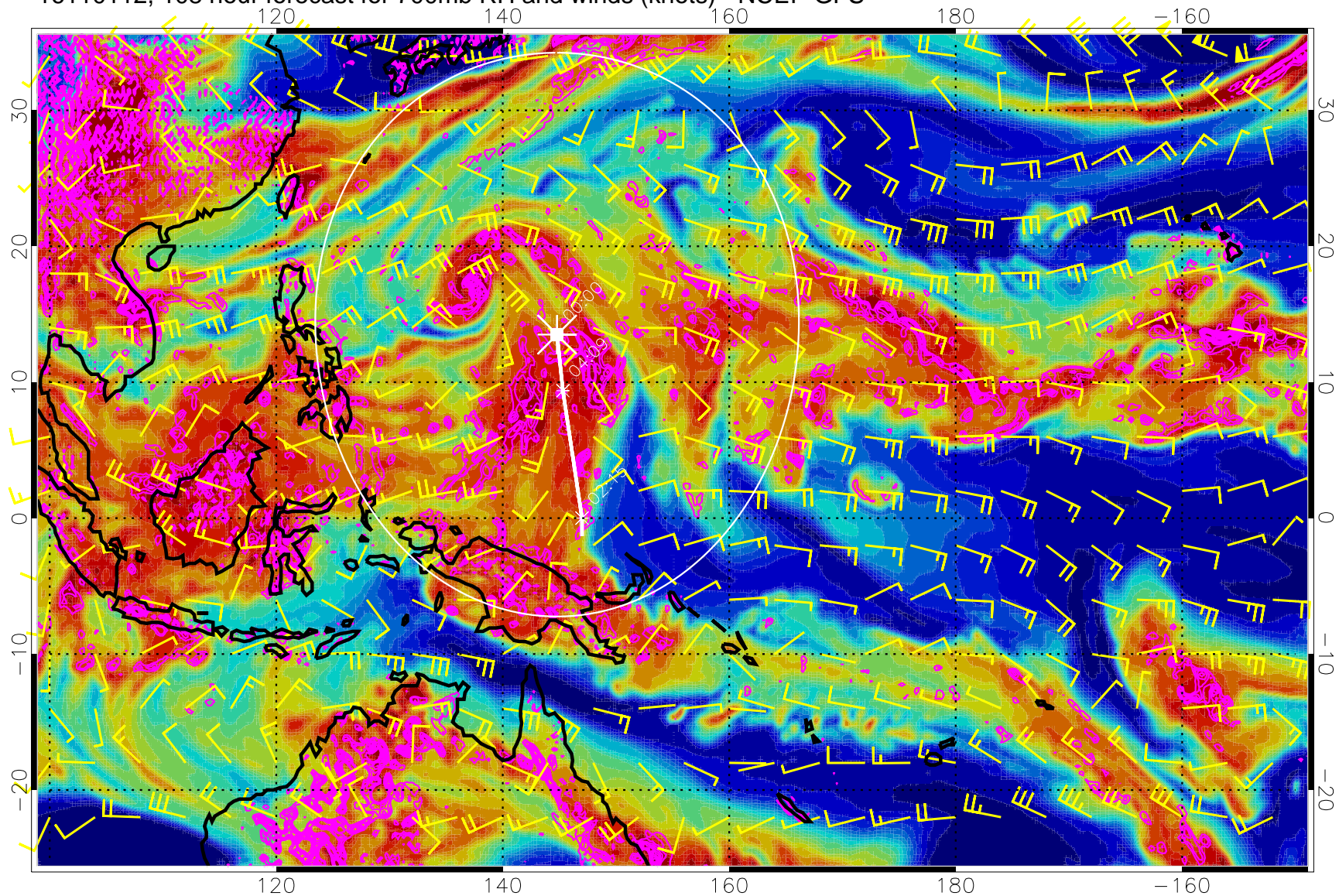
Negative Omegas less than  $-0.3$ , contours of  $0.3$  Pa/s



Range ring of 2304 km



16110112, 108 hour forecast for 700mb RH and winds (knots) - NCEP GFS

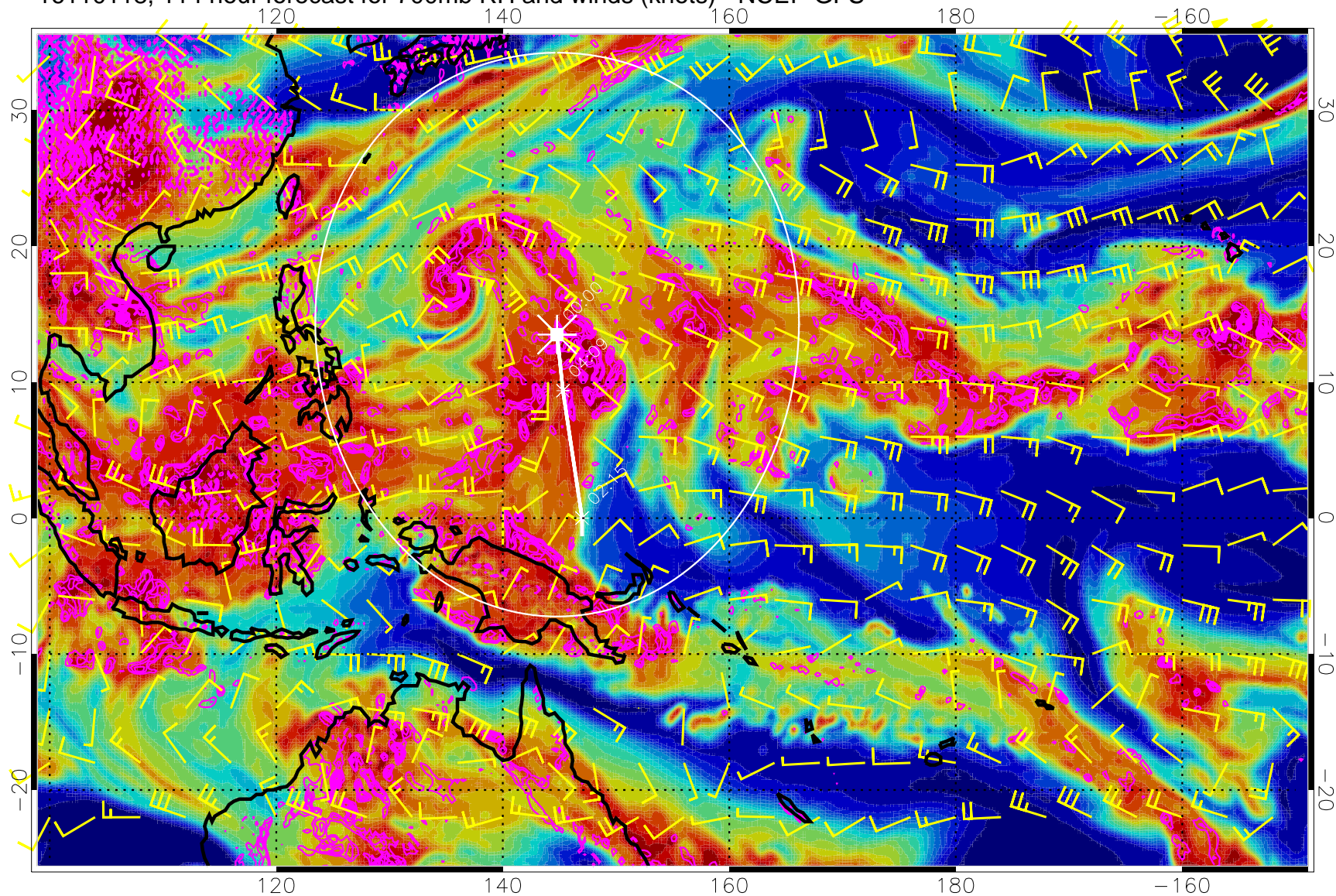


Negative Omegas less than  $-0.3$ , contours of  $0.3$  Pa/s

Range ring of 2304 km



16110118, 114 hour forecast for 700mb RH and winds (knots) - NCEP GFS



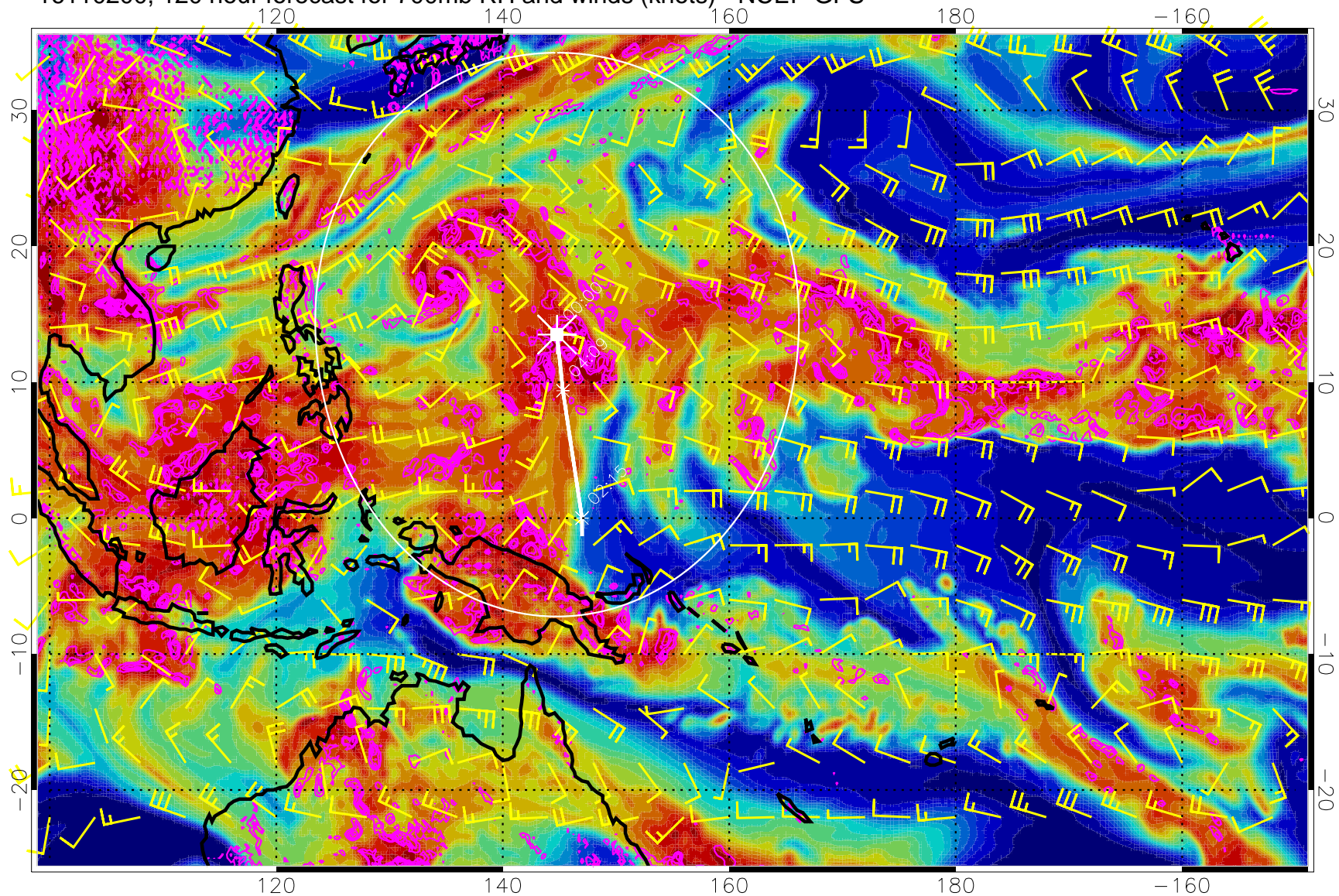
0 20 40 60 80 100  
RH, %

Negative Omegas less than  $-0.3$ , contours of  $0.3$  Pa/s

Range ring of 2304 km



16110200, 120 hour forecast for 700mb RH and winds (knots) - NCEP GFS



Negative Omegas less than  $-0.3$ , contours of  $0.3 \text{ Pa/s}$

Range ring of 2304 km