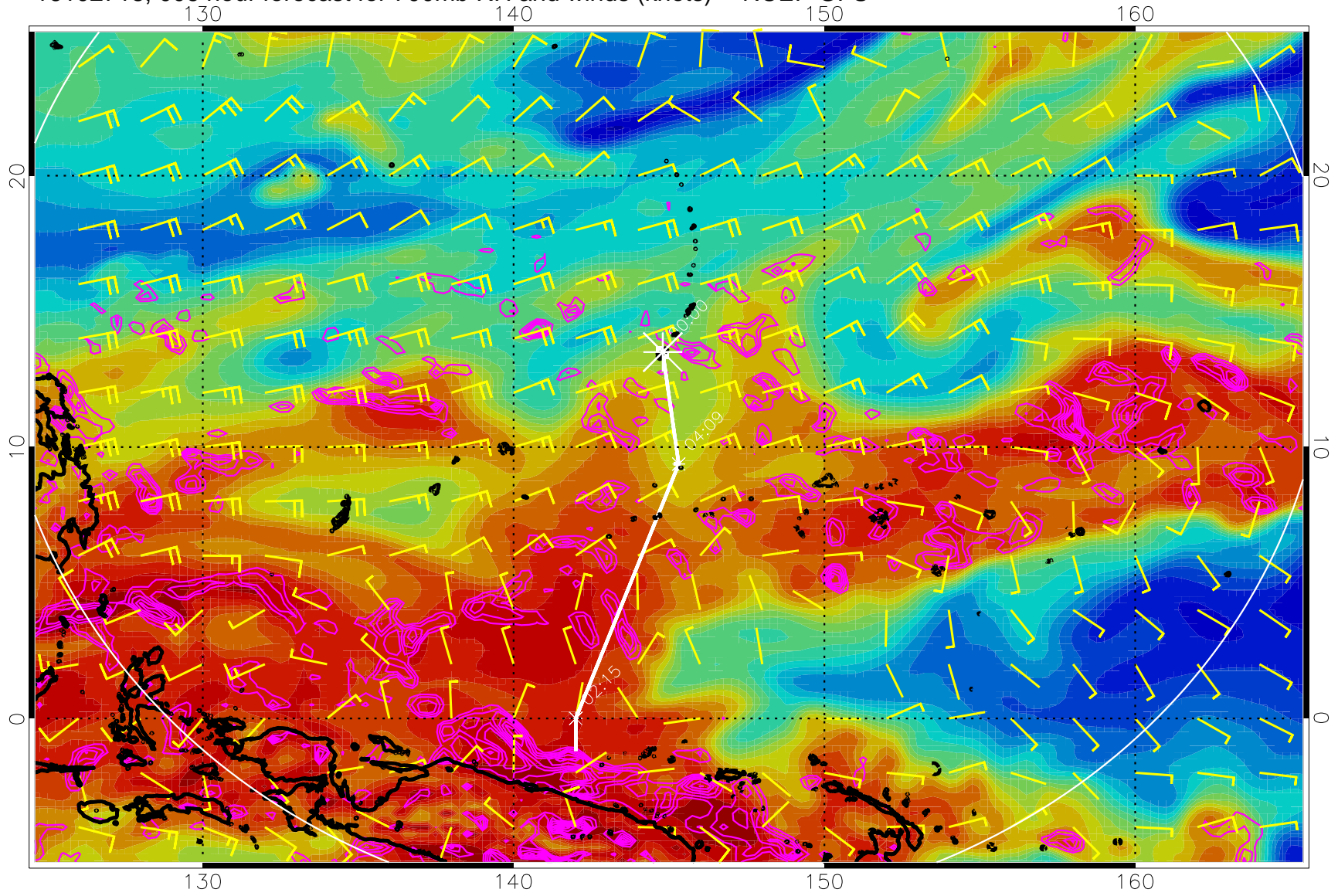
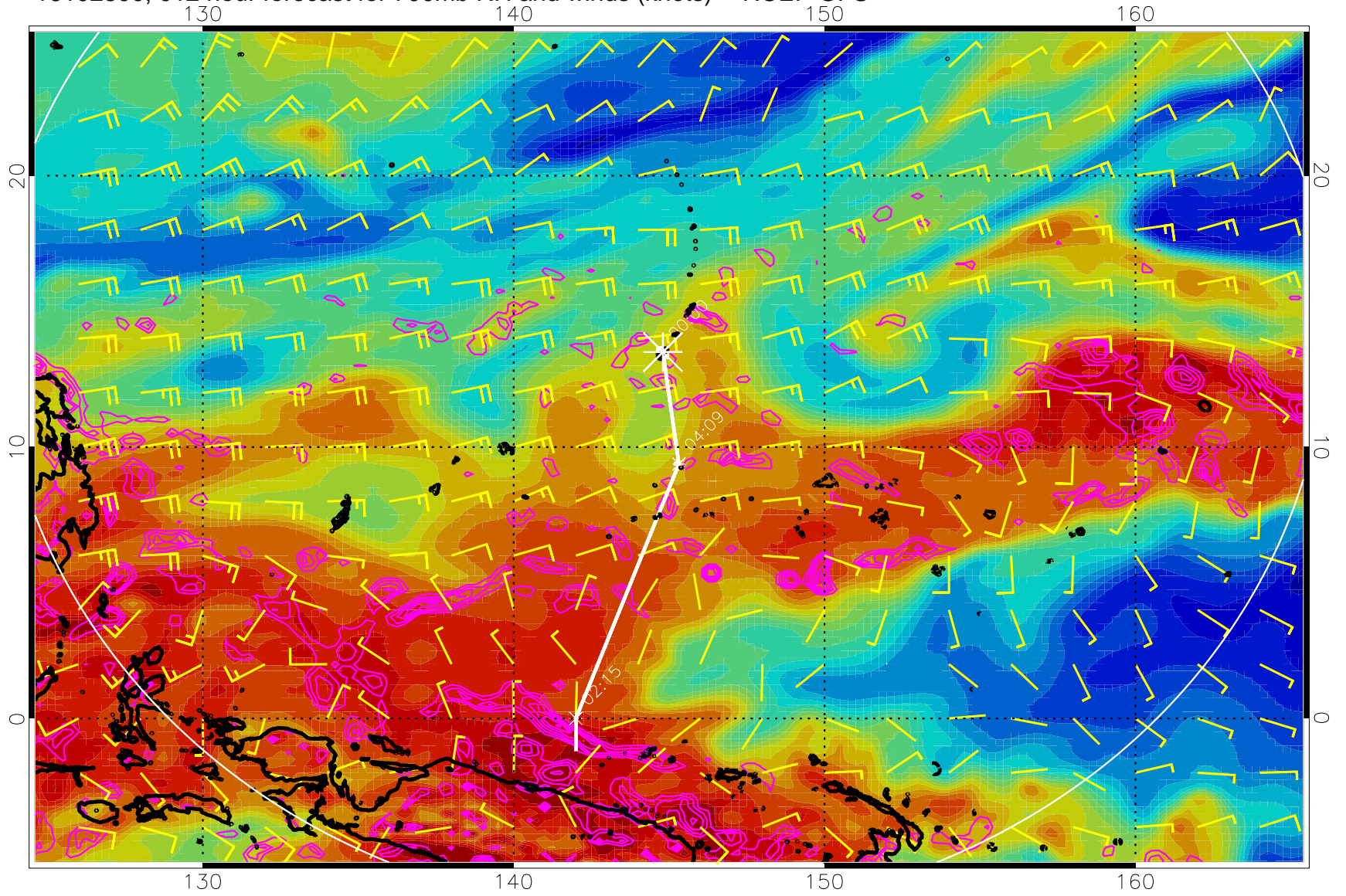


16102718, 006 hour forecast for 700mb RH and winds (knots) -- NCEP GFS



Negative Omegas less than  $-0.3$ , contours of  $0.3$  Pa/s

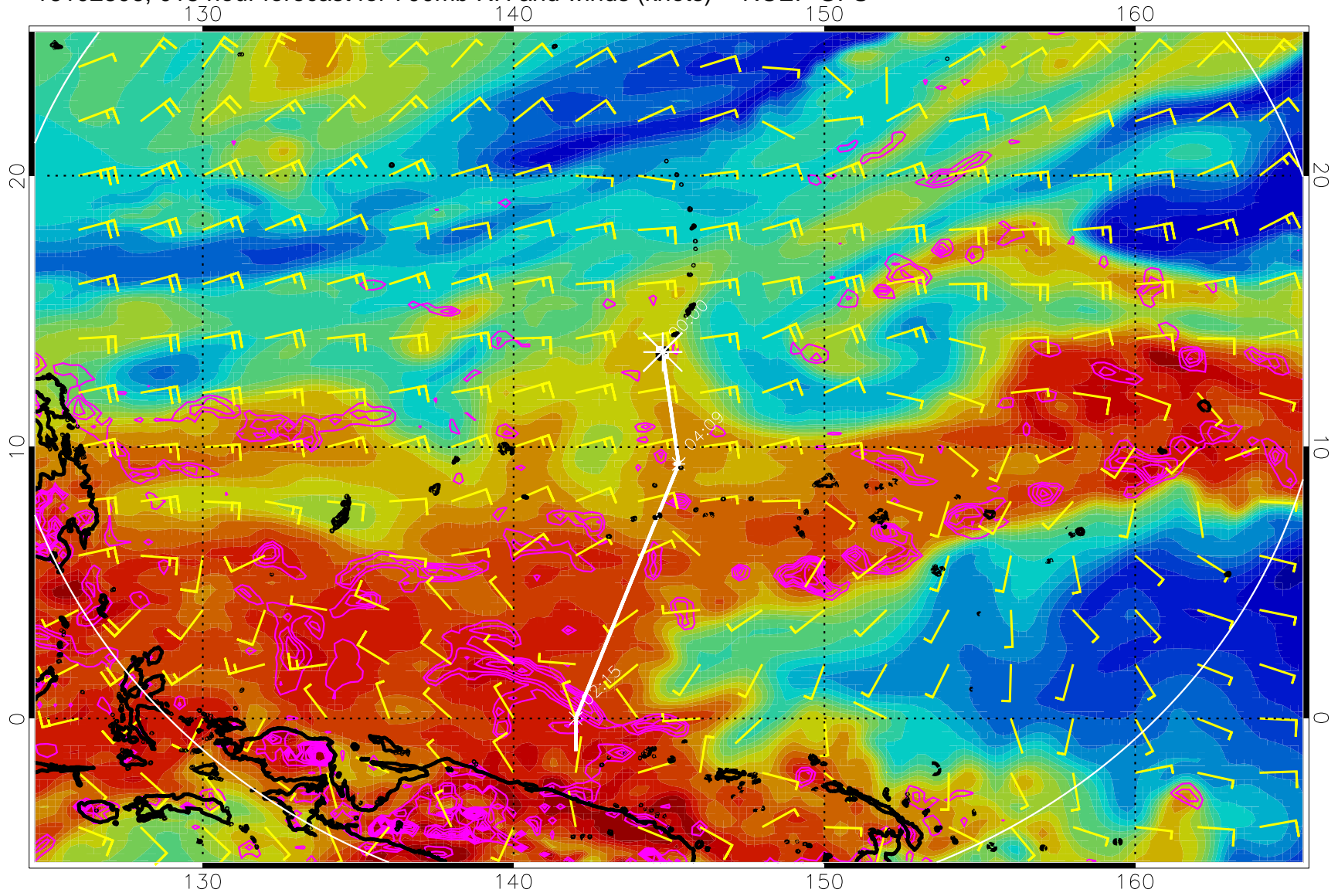
16102800, 012 hour forecast for 700mb RH and winds (knots) -- NCEP GFS



Negative Omegas less than  $-0.3$ , contours of  $0.3$  Pa/s

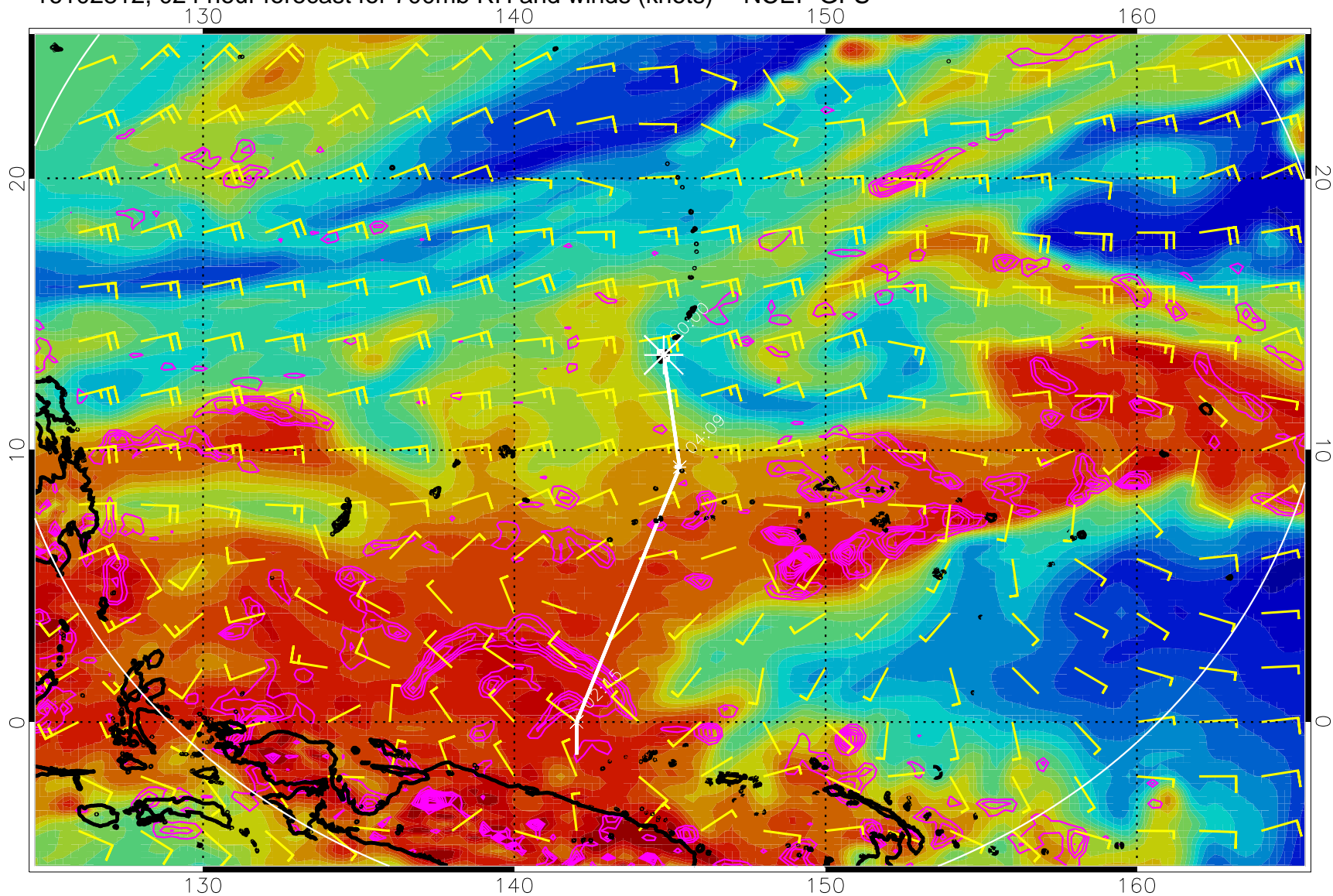


16102806, 018 hour forecast for 700mb RH and winds (knots) -- NCEP GFS



Negative Omegas less than -.3, contours of .3 Pa/s

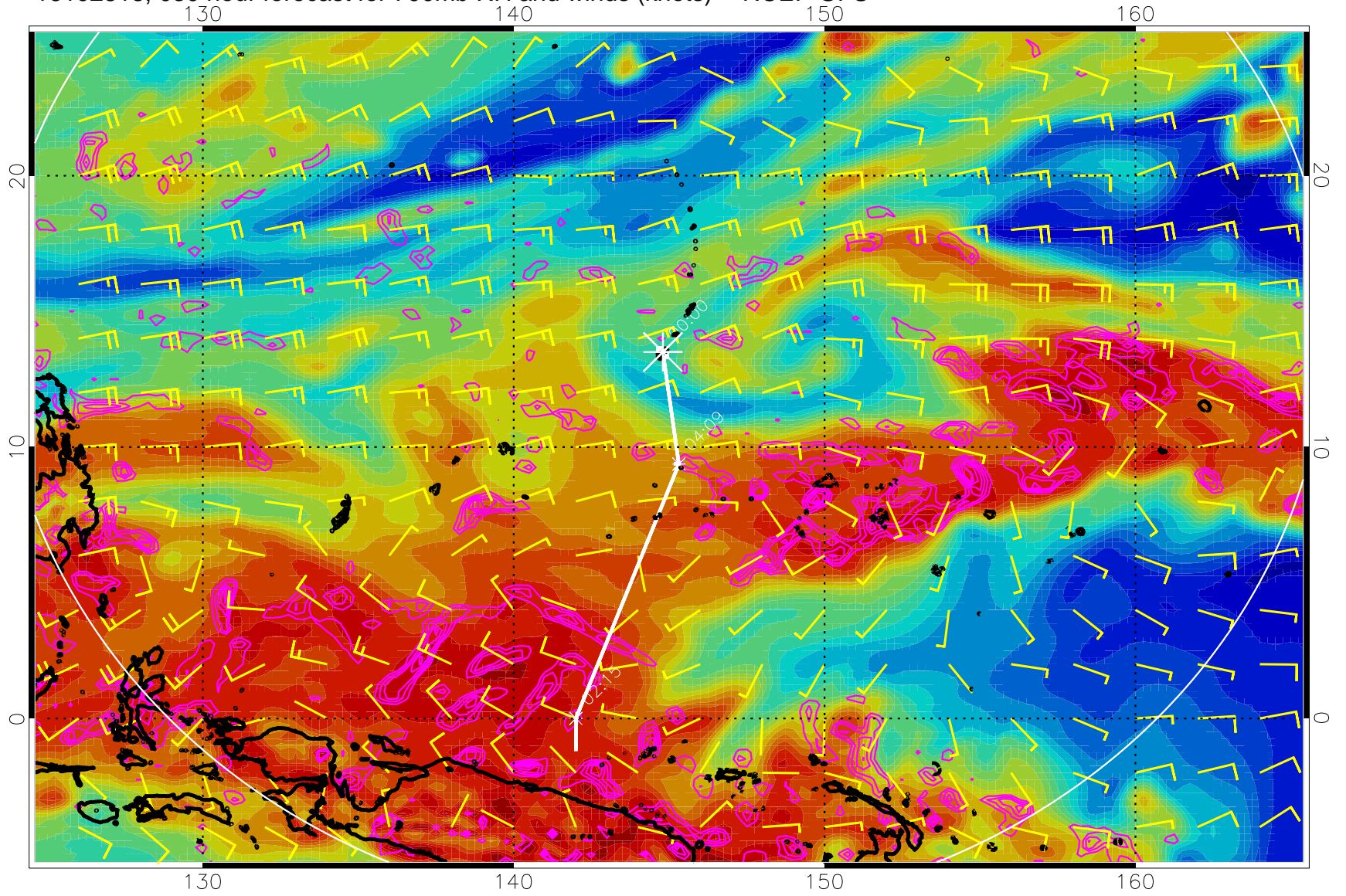
16102812, 024 hour forecast for 700mb RH and winds (knots) -- NCEP GFS



Negative Omegas less than  $-0.3$ , contours of  $0.3$  Pa/s

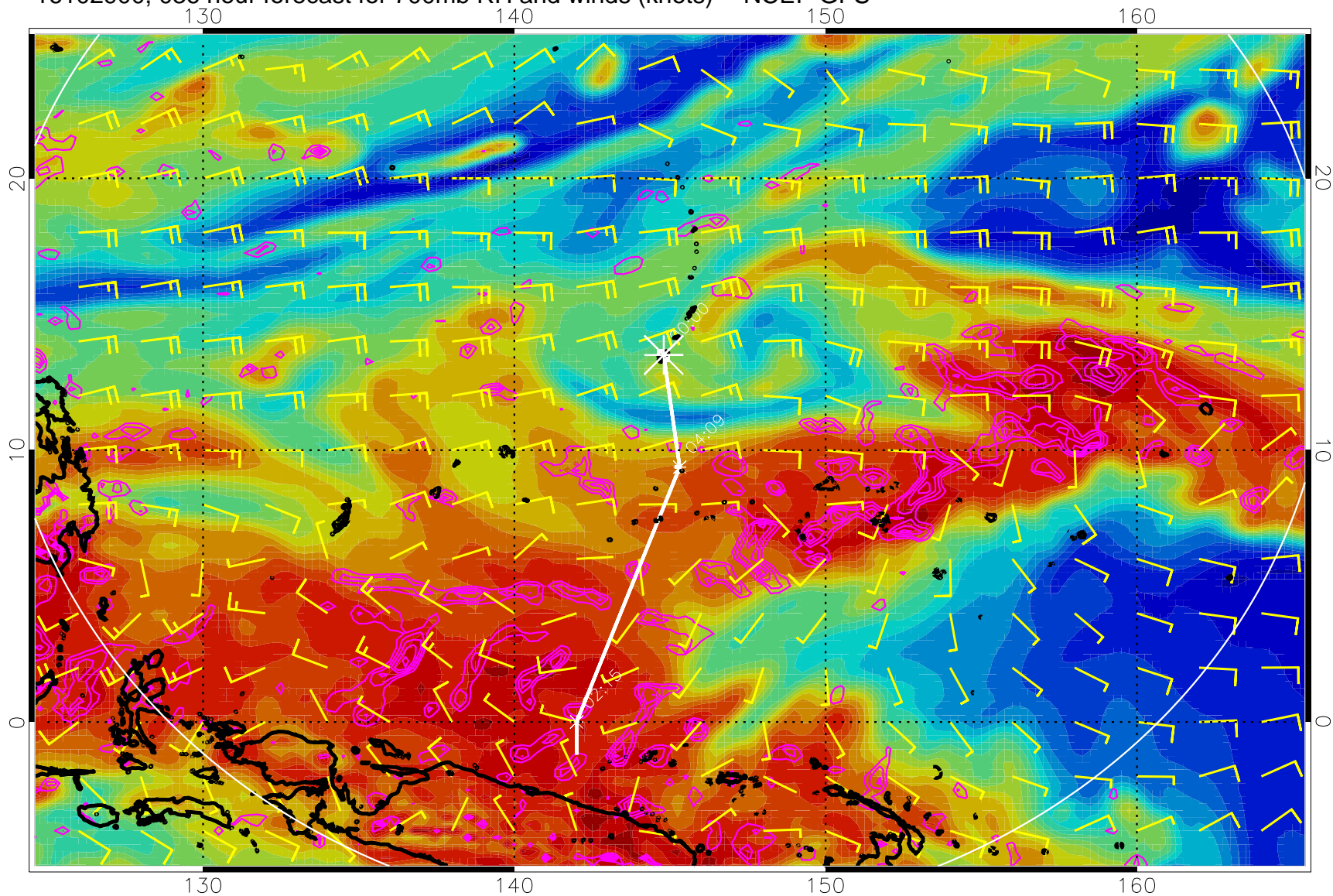


16102818, 030 hour forecast for 700mb RH and winds (knots) -- NCEP GFS



Negative Omegas less than  $-0.3$ , contours of  $0.3$  Pa/s

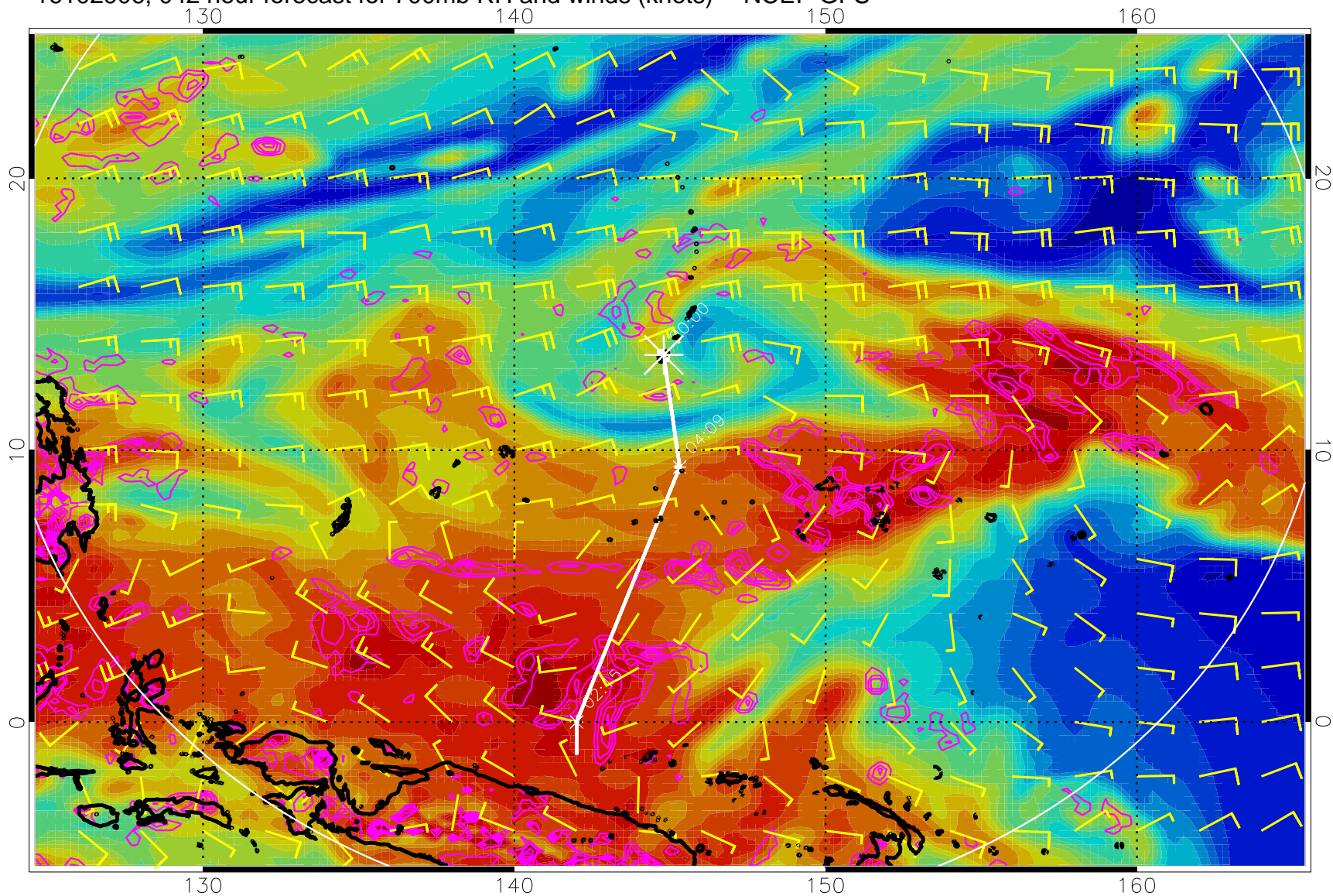
16102900, 036 hour forecast for 700mb RH and winds (knots) -- NCEP GFS



Negative Omegas less than  $-0.3$ , contours of  $0.3$  Pa/s



16102906, 042 hour forecast for 700mb RH and winds (knots) -- NCEP GFS

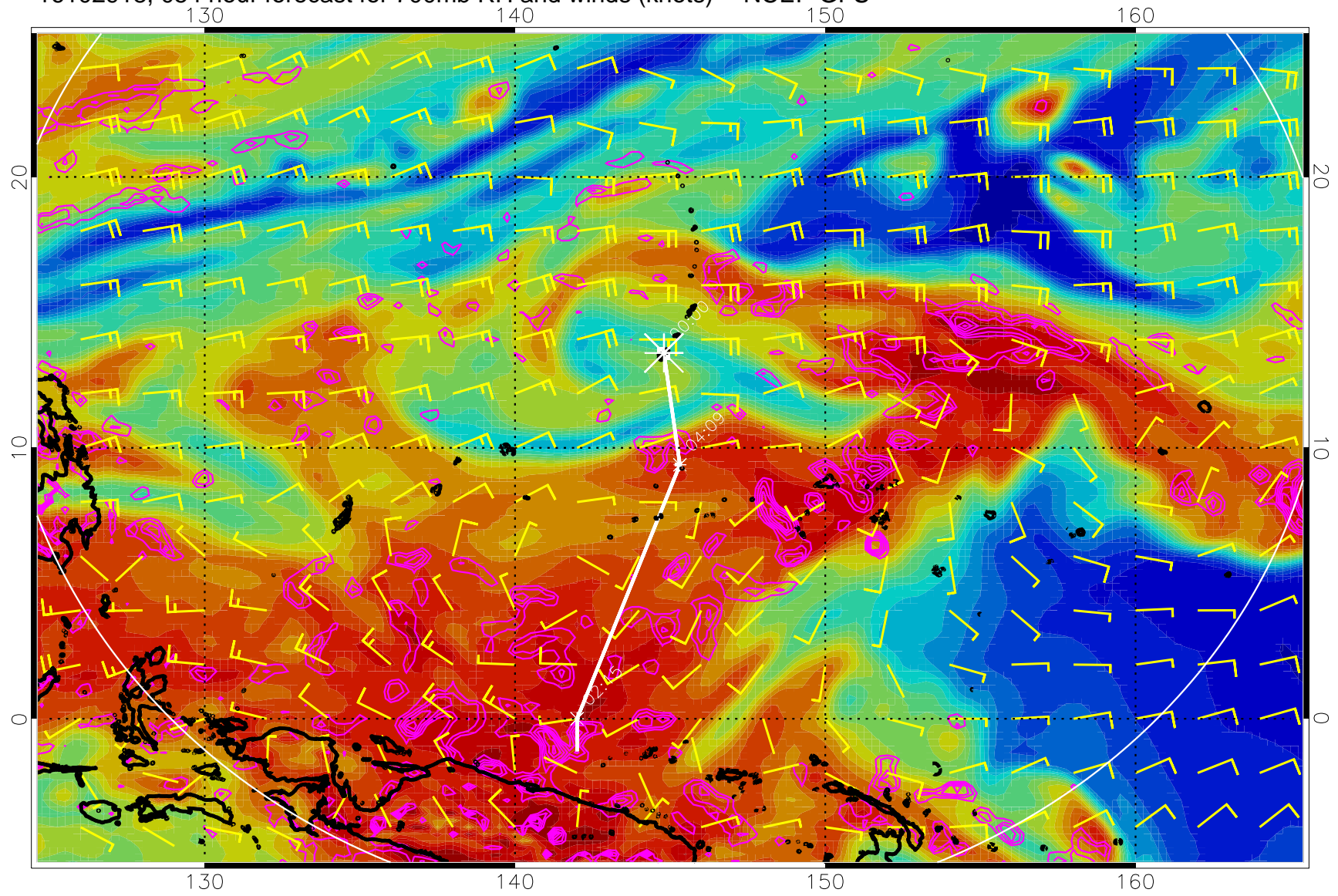


Negative Omegas less than  $-0.3$ , contours of  $0.3$  Pa/s



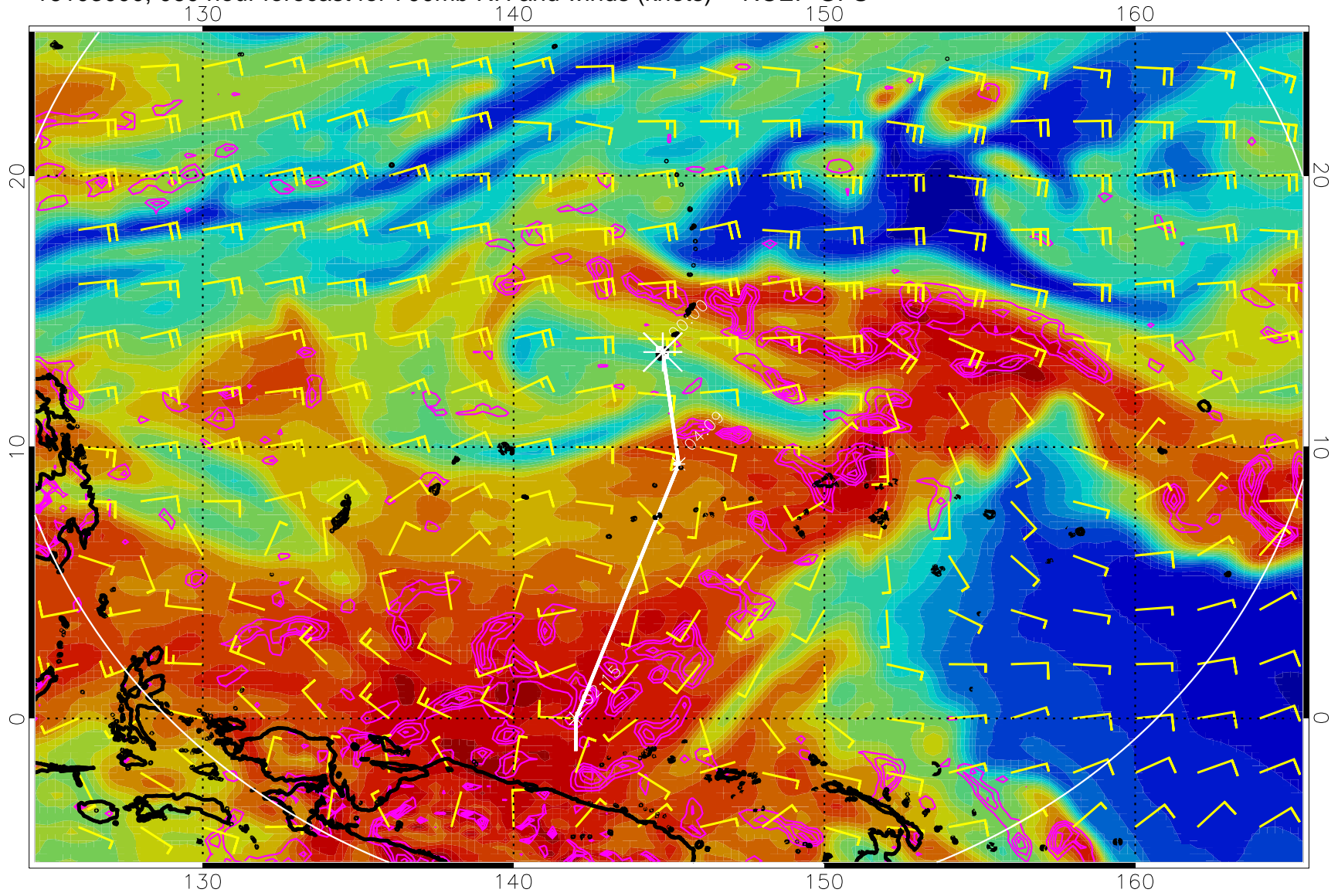


16102918, 054 hour forecast for 700mb RH and winds (knots) -- NCEP GFS



Negative Omegas less than  $-0.3$ , contours of  $0.3$  Pa/s

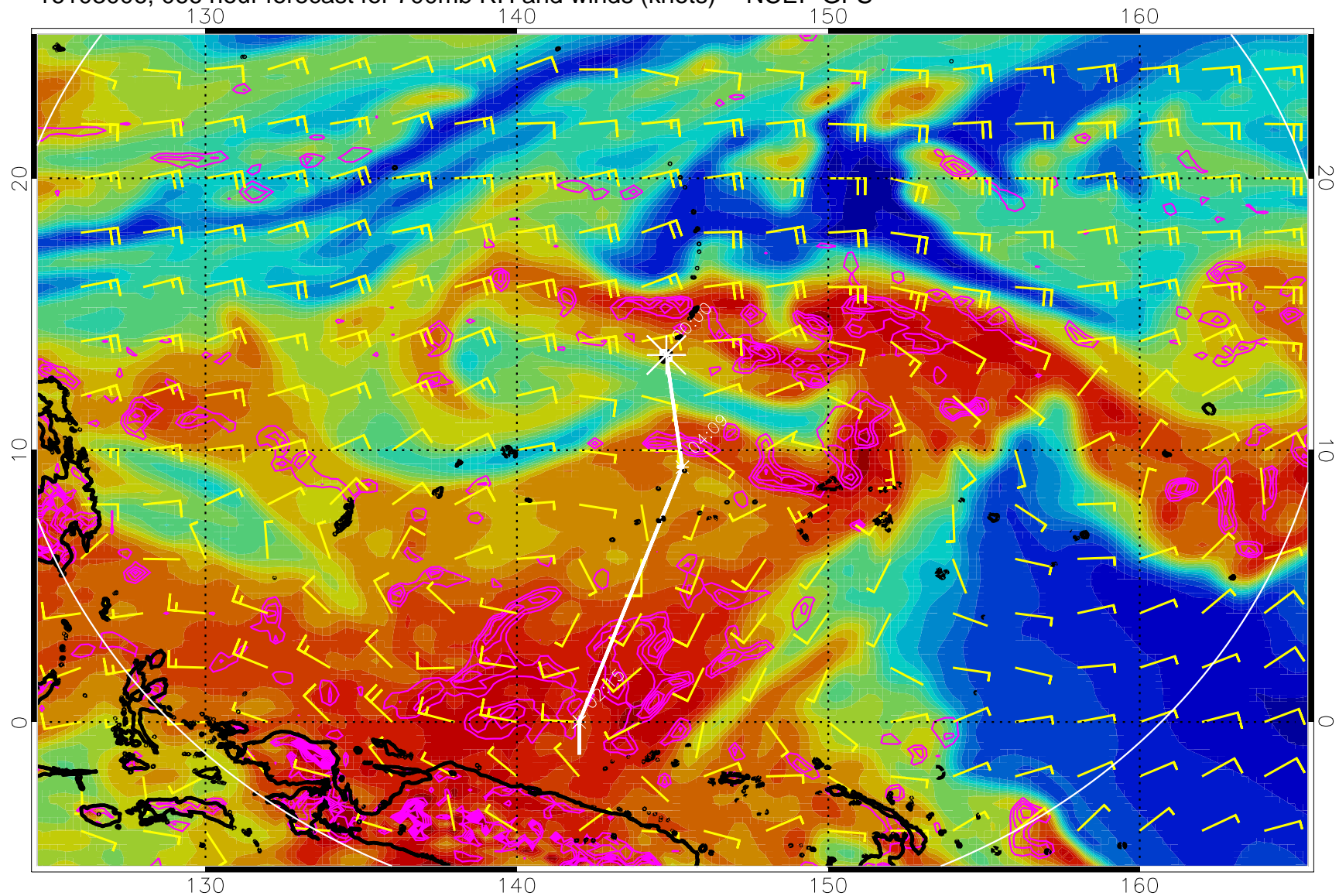
16103000, 060 hour forecast for 700mb RH and winds (knots) -- NCEP GFS



Negative Omegas less than  $-0.3$ , contours of  $0.3$  Pa/s

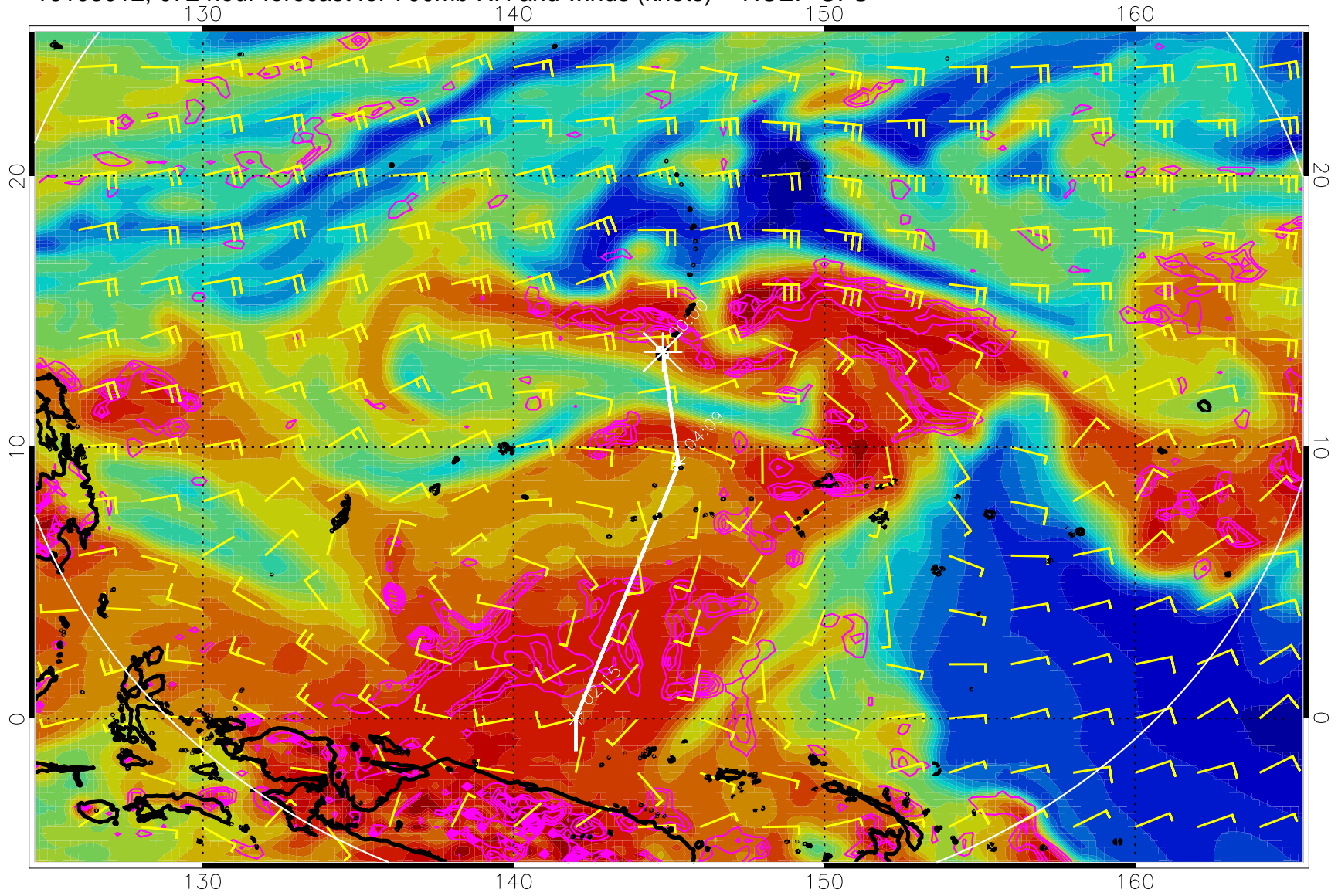


16103006, 066 hour forecast for 700mb RH and winds (knots) -- NCEP GFS



Negative Omegas less than  $-0.3$ , contours of  $0.3$  Pa/s

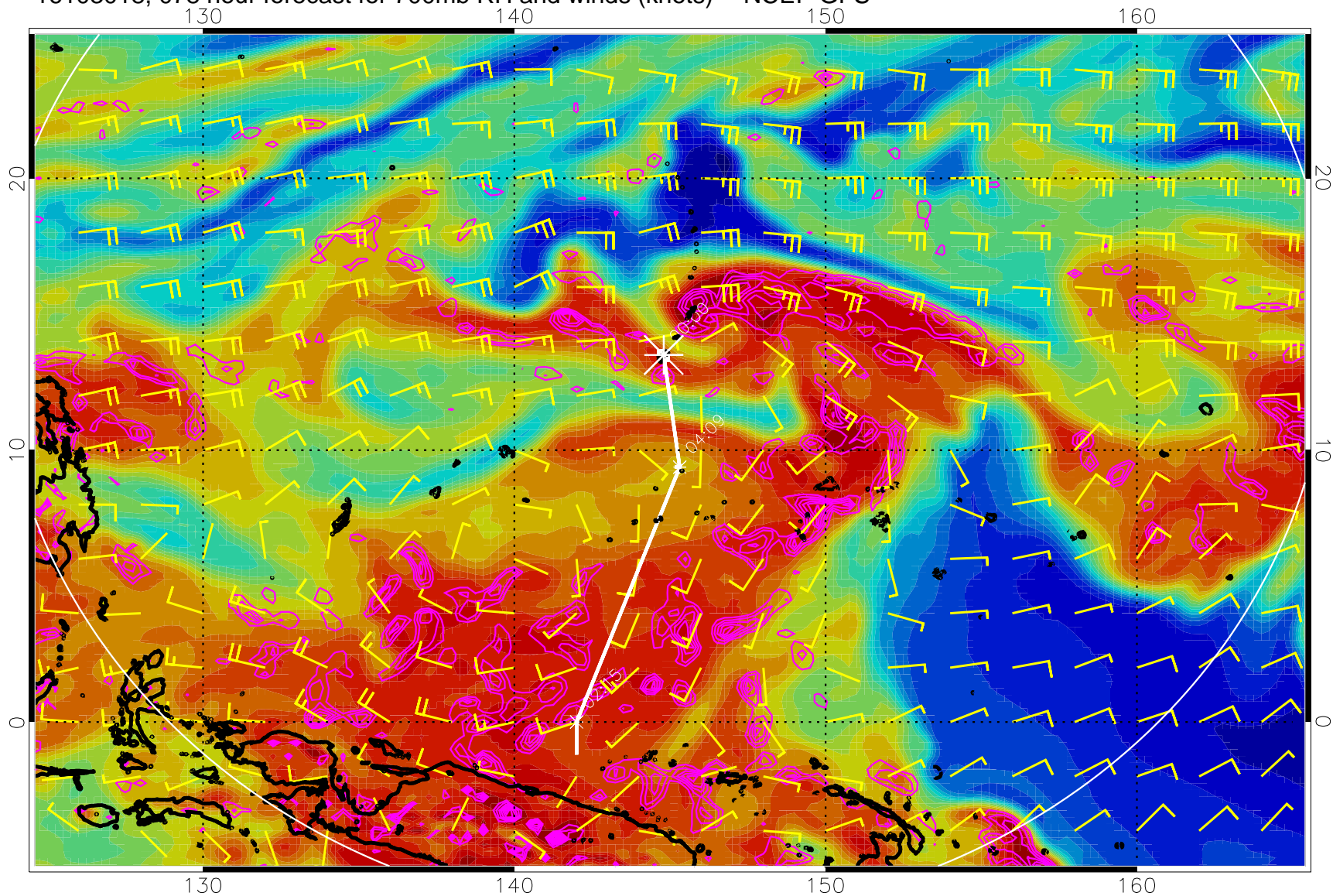
16103012, 072 hour forecast for 700mb RH and winds (knots) -- NCEP GFS



Negative Omegas less than -.3, contours of .3 Pa/s



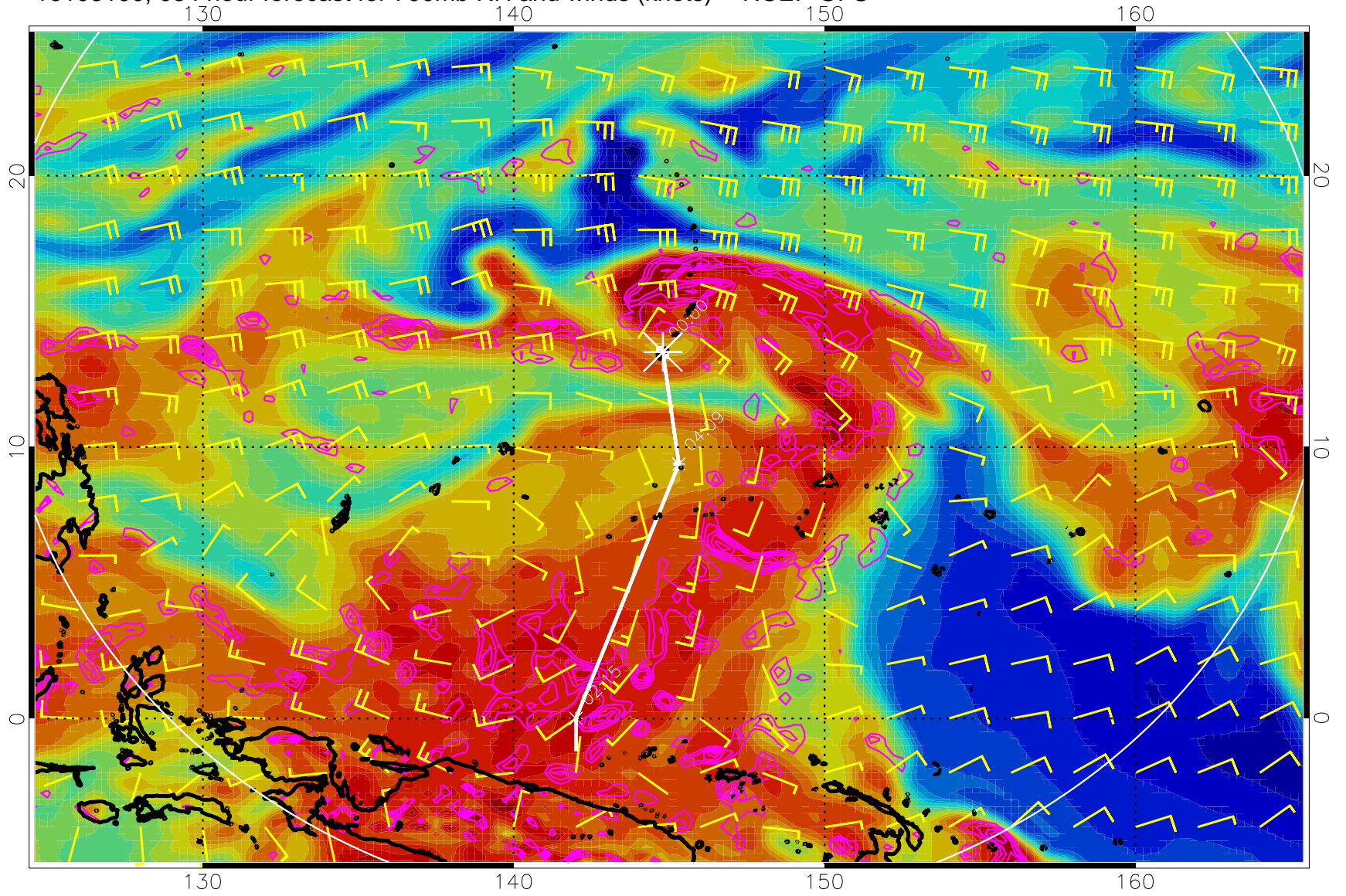
16103018, 078 hour forecast for 700mb RH and winds (knots) -- NCEP GFS



0 20 40 60 80 100  
RH, %

Negative Omegas less than  $-0.3$ , contours of  $0.3$  Pa/s

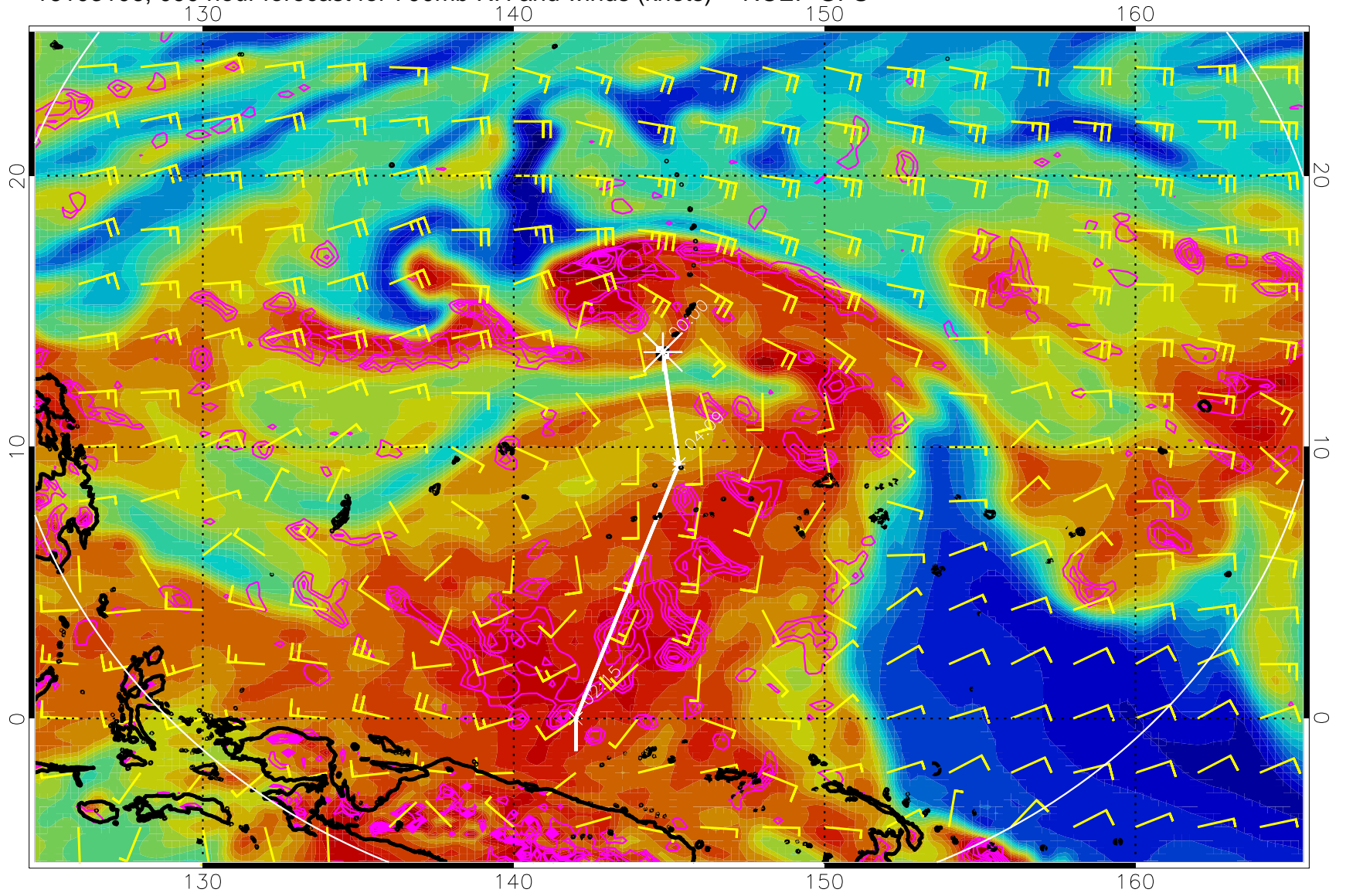
16103100, 084 hour forecast for 700mb RH and winds (knots) -- NCEP GFS



Negative Omegas less than  $-0.3$ , contours of  $0.3$  Pa/s

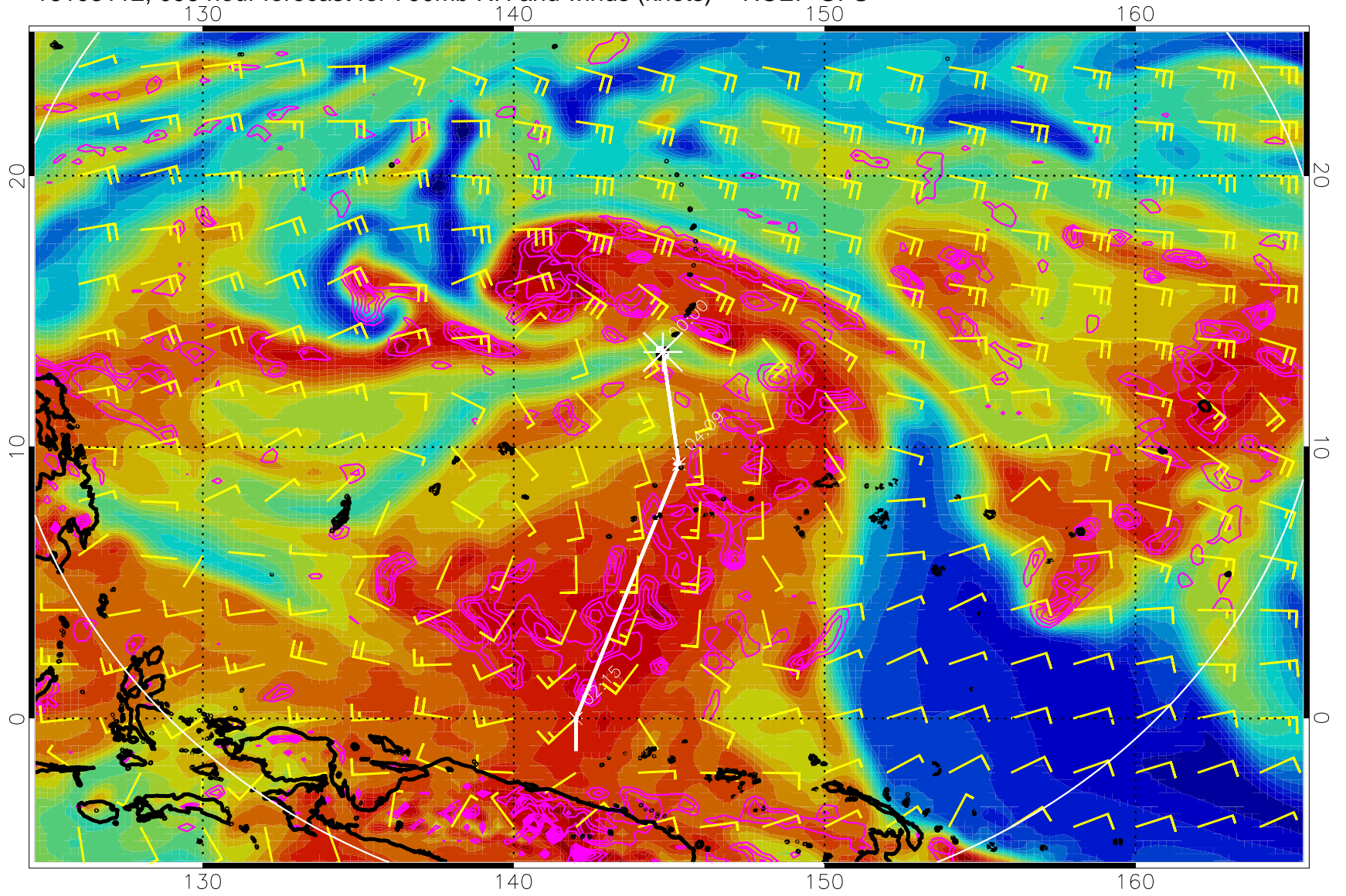


16103106, 090 hour forecast for 700mb RH and winds (knots) -- NCEP GFS



Negative Omegas less than  $-0.3$ , contours of  $0.3$  Pa/s

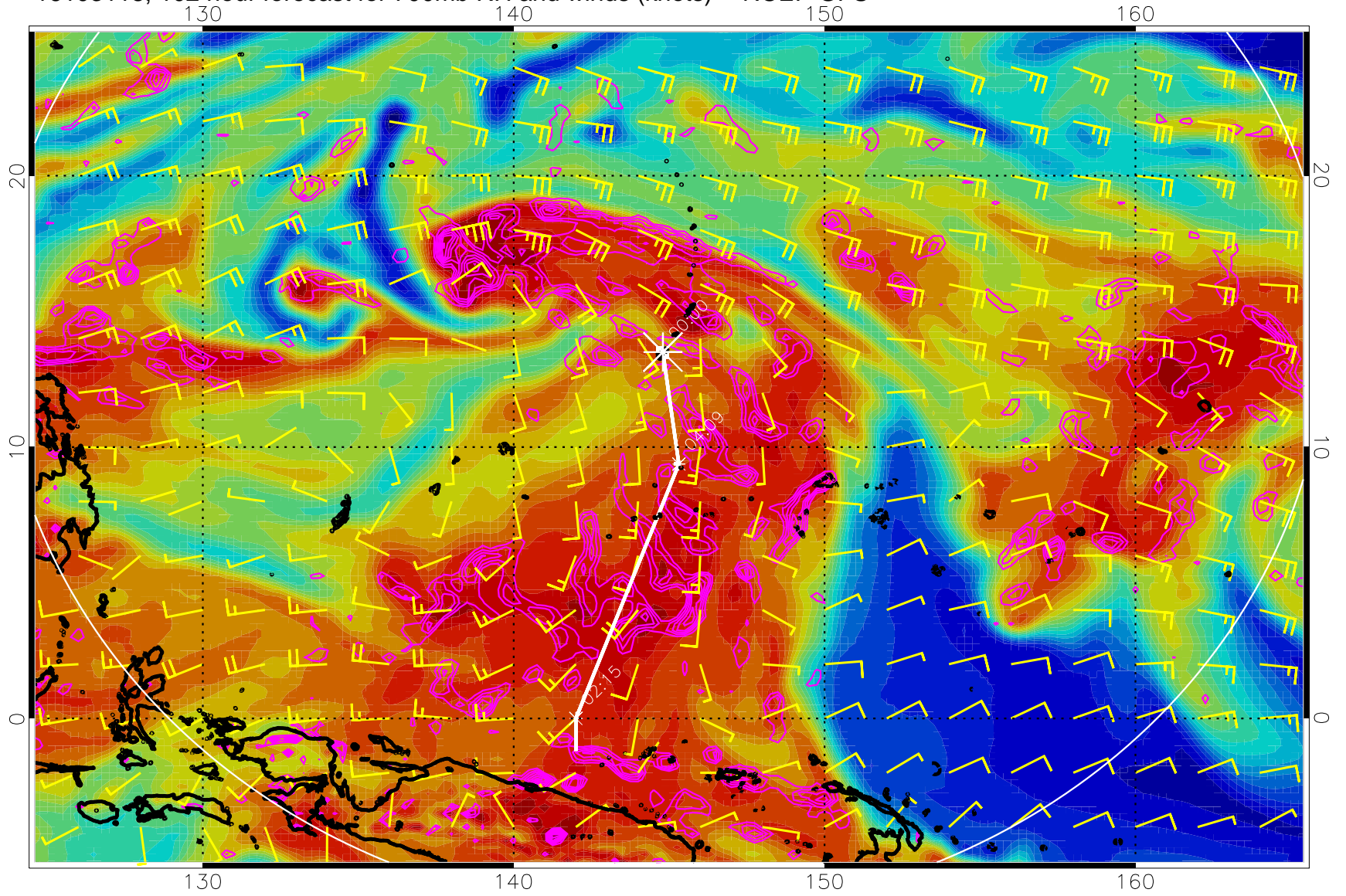
16103112, 096 hour forecast for 700mb RH and winds (knots) -- NCEP GFS



Negative Omegas less than -.3, contours of .3 Pa/s

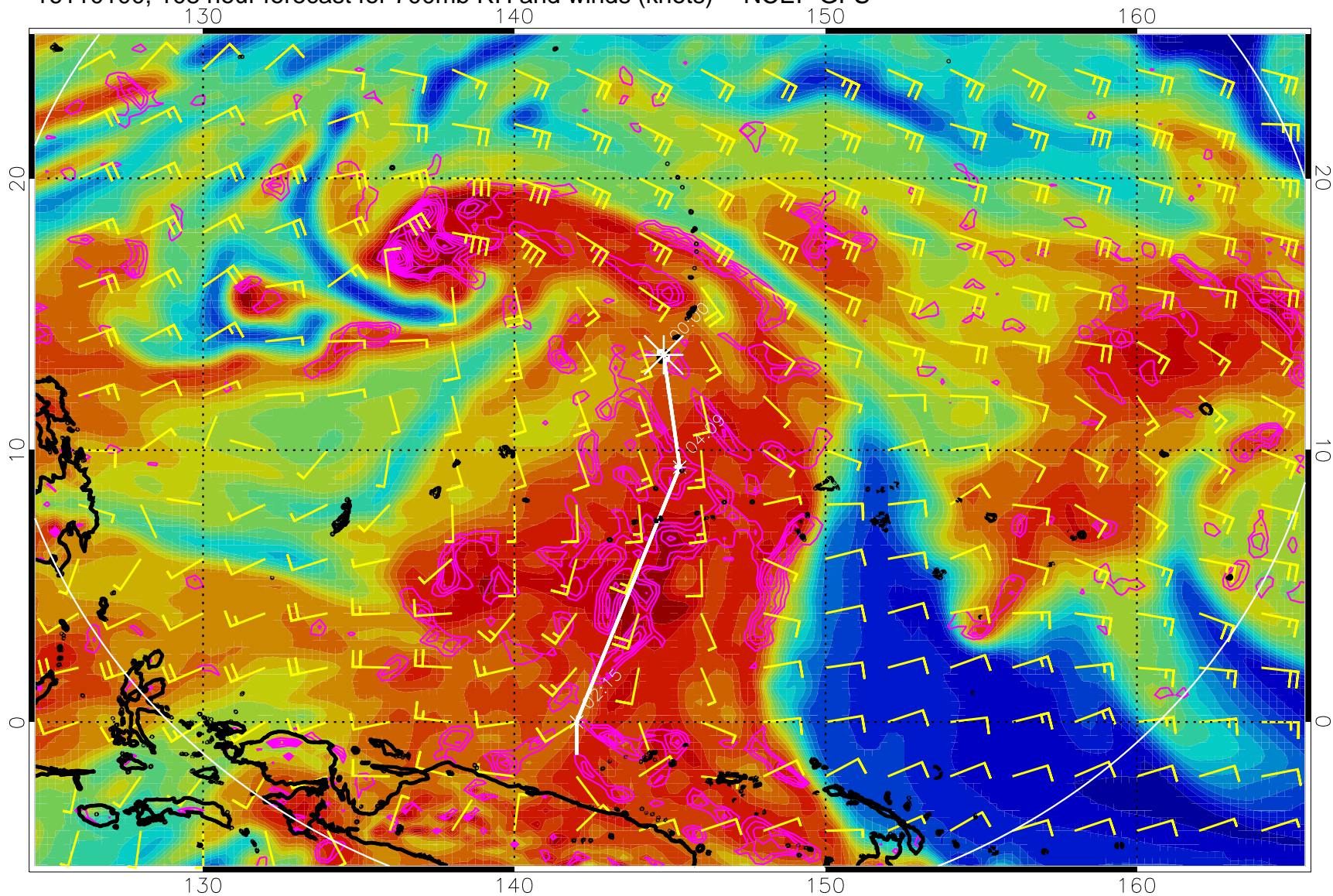


16103118, 102 hour forecast for 700mb RH and winds (knots) -- NCEP GFS



Negative Omegas less than  $-0.3$ , contours of  $0.3$  Pa/s

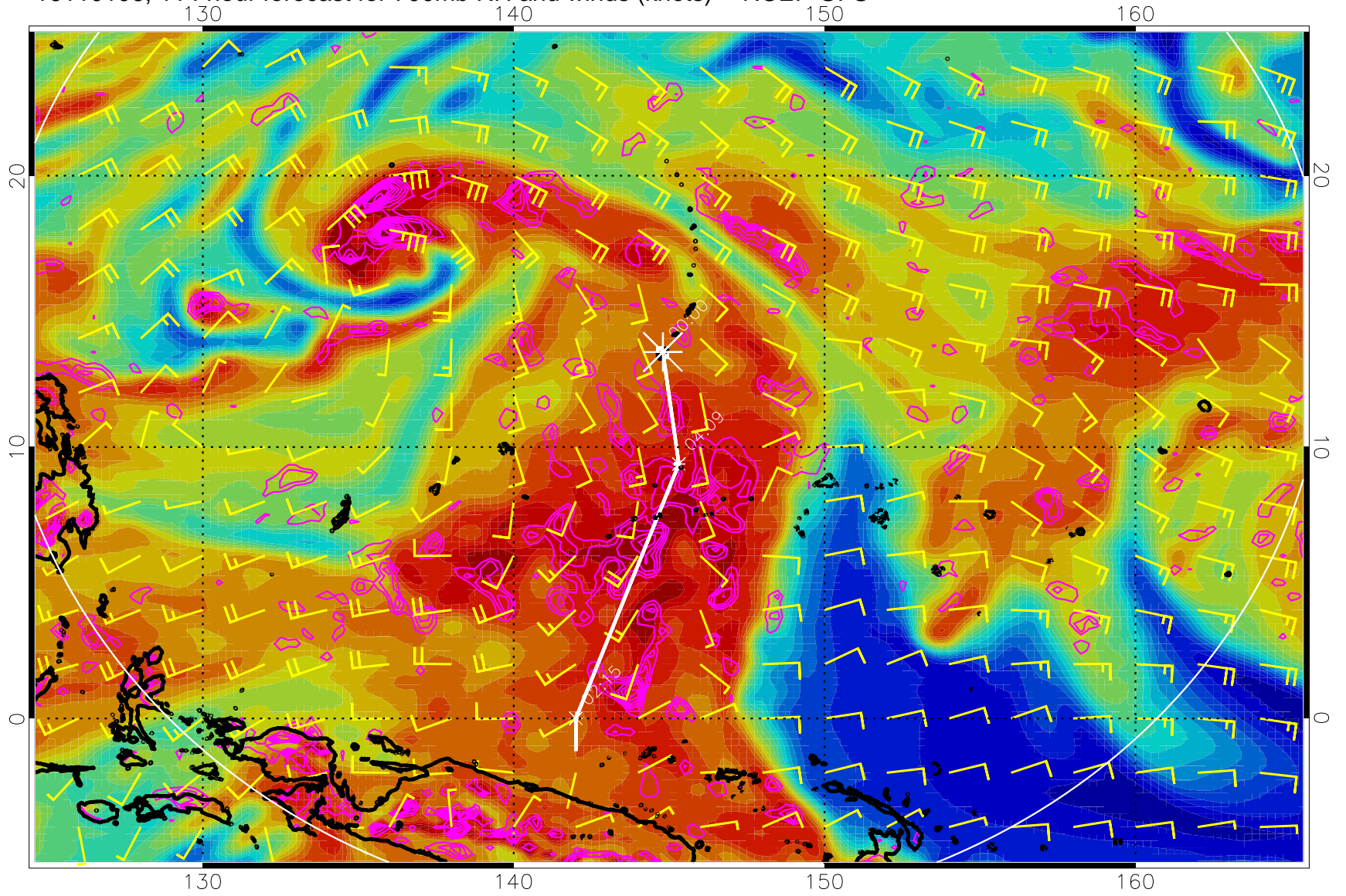
16110100, 108 hour forecast for 700mb RH and winds (knots) -- NCEP GFS



Negative Omegas less than  $-0.3$ , contours of  $0.3$  Pa/s

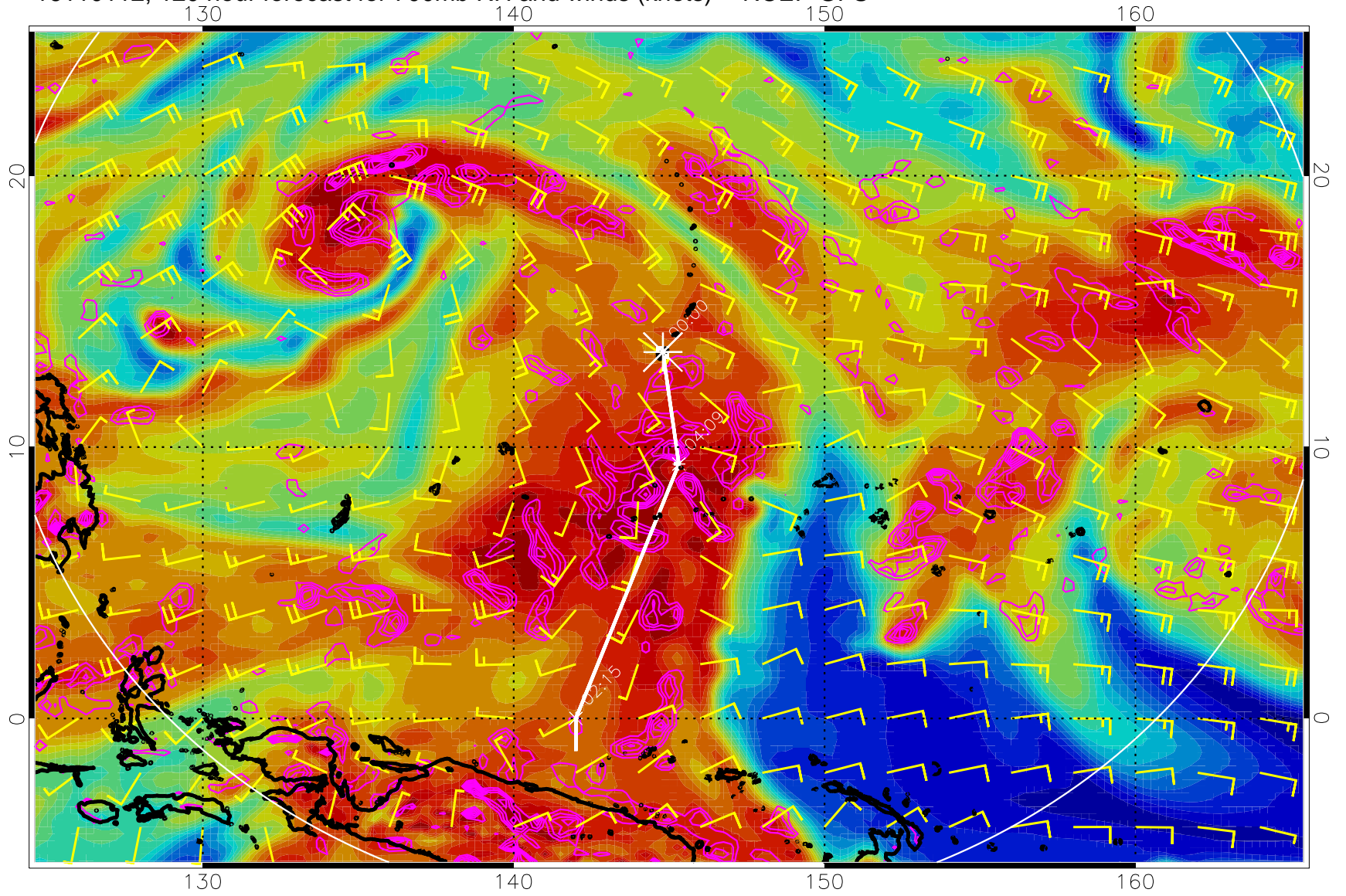


16110106, 114 hour forecast for 700mb RH and winds (knots) -- NCEP GFS



Negative Omegas less than  $-0.3$ , contours of  $0.3$  Pa/s

16110112, 120 hour forecast for 700mb RH and winds (knots) -- NCEP GFS



Negative Omegas less than  $-0.3$ , contours of  $0.3$  Pa/s