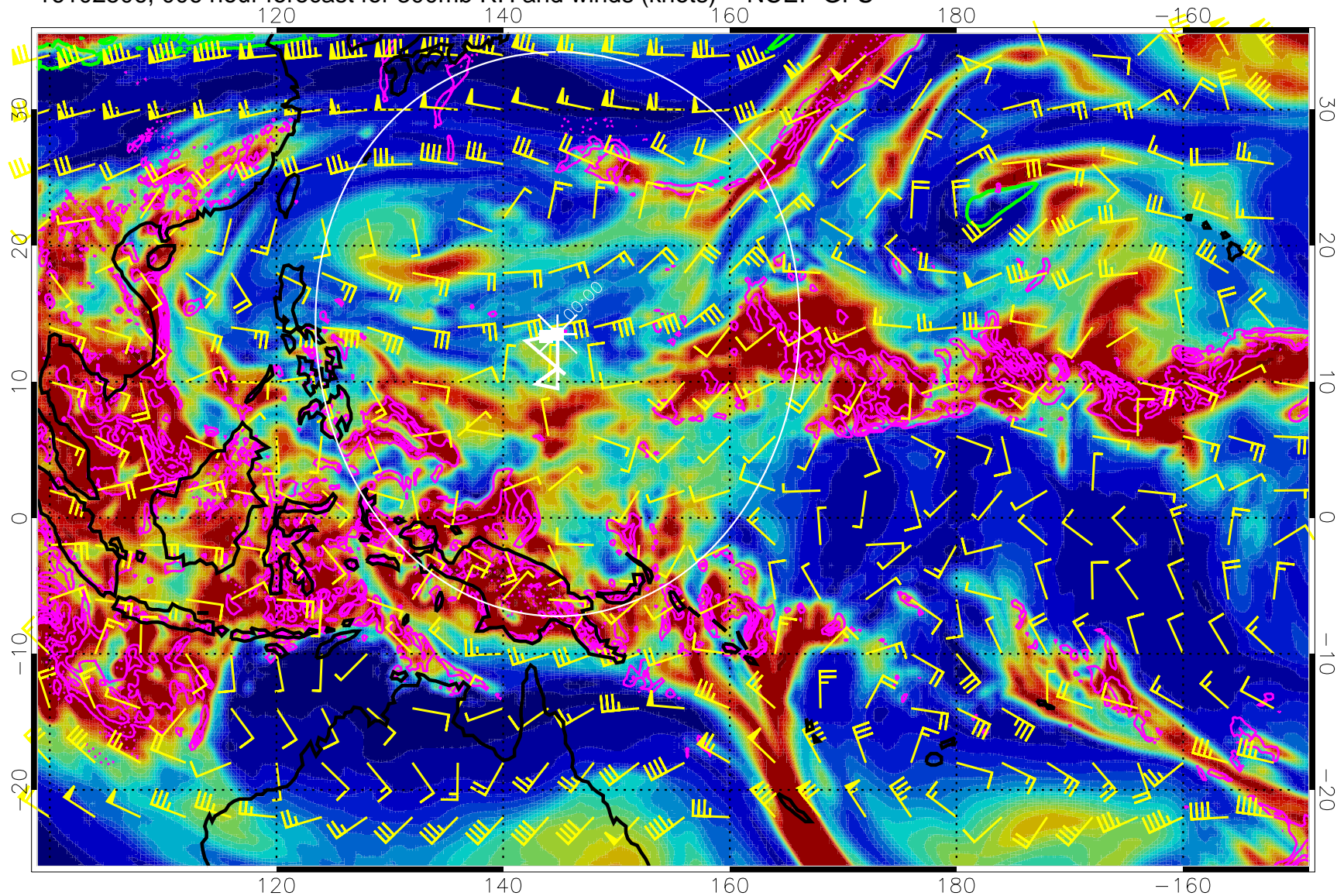


16102506, 006 hour forecast for 300mb RH and winds (knots) -- NCEP GFS

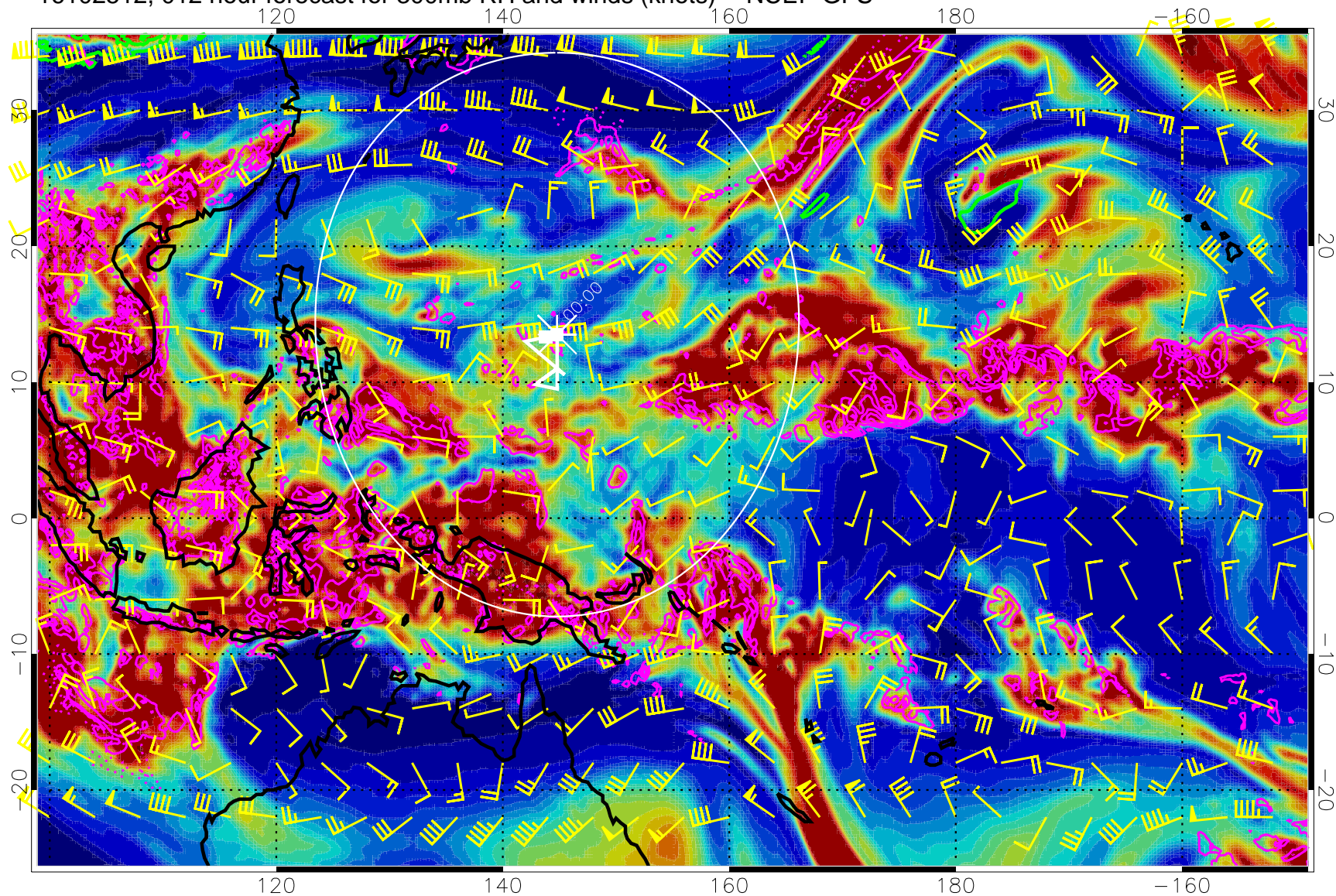


Precip (tot dot, conv sol) mm/day 40 mm/day contours, min 20

EPV Tropopause (2 PVU) Position

Range ring of 2304 km

16102512, 012 hour forecast for 300mb RH and winds (knots) -- NCEP GFS

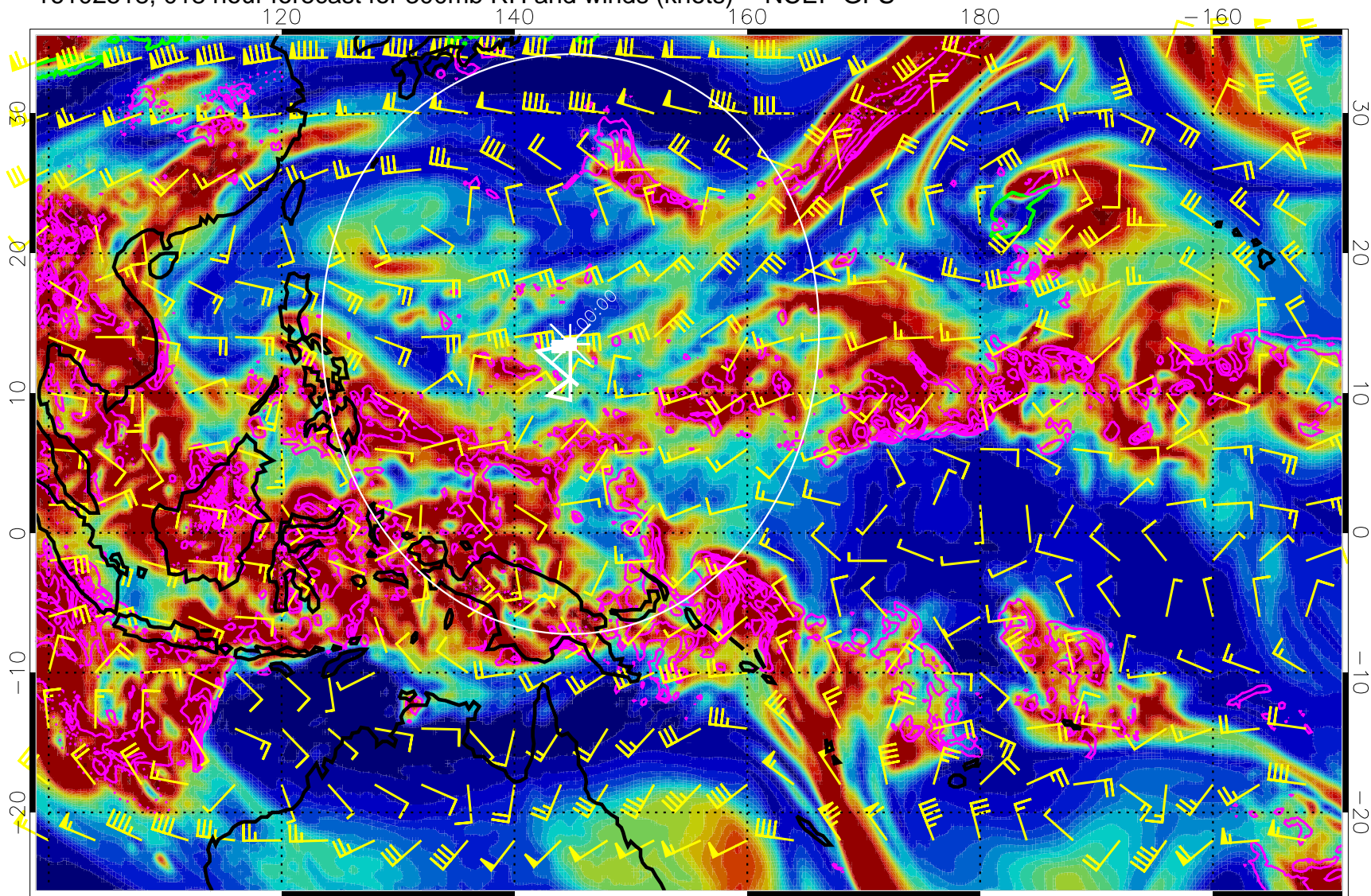


Precip (tot dot, conv sol) mm/day 40 mm/day contours, min 20

EPV Tropopause (2 PVU) Position

Range ring of 2304 km

16102518, 018 hour forecast for 300mb RH and winds (knots) -- NCEP GFS

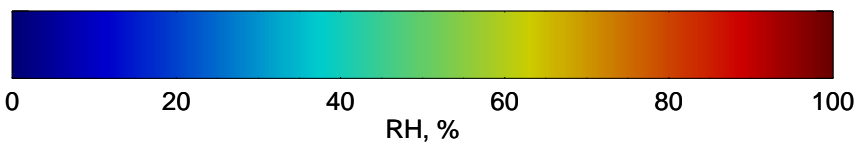
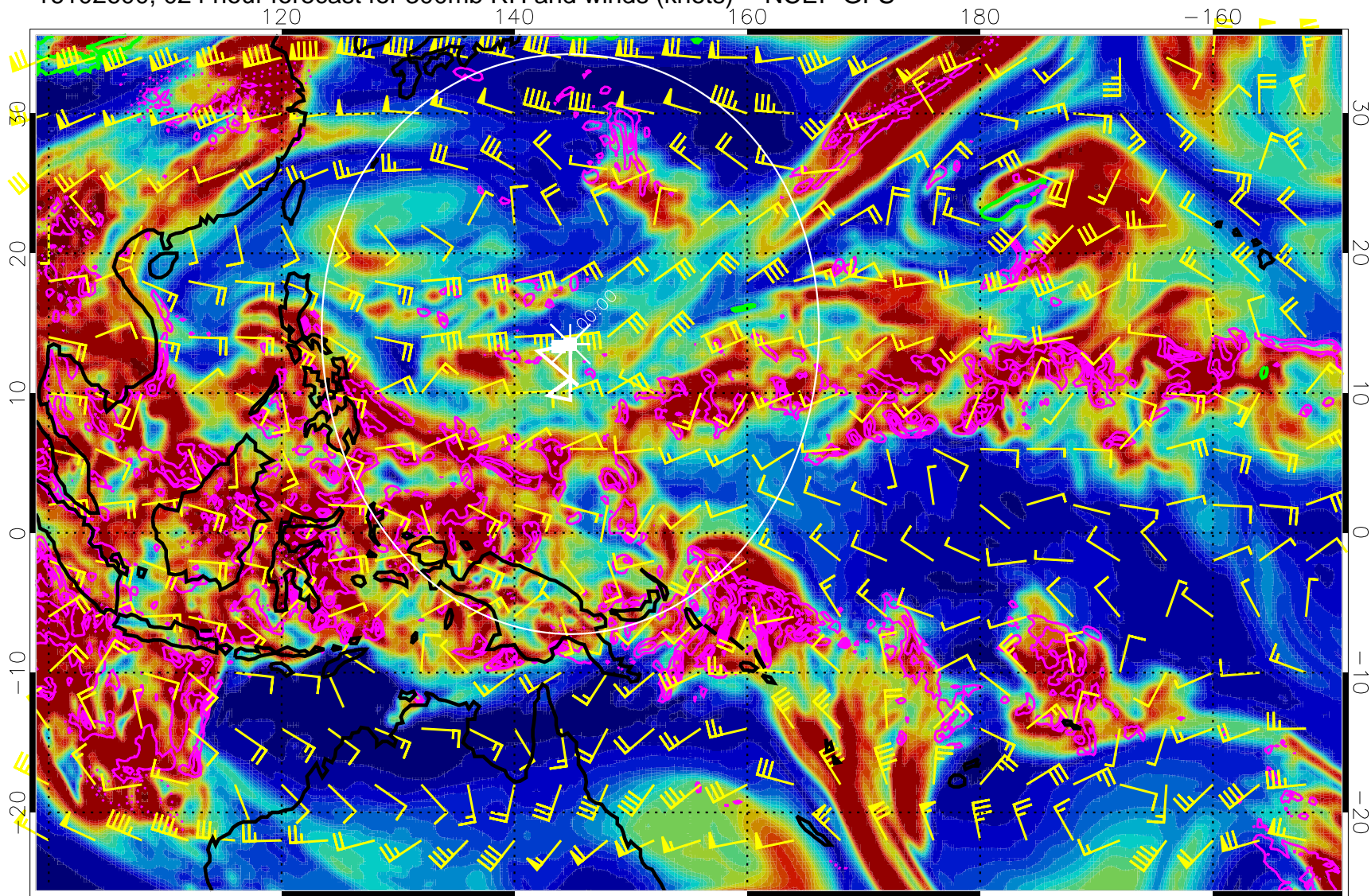


Precip (tot dot, conv sol) mm/day 40 mm/day contours, min 20

EPV Tropopause (2 PVU) Position

Range ring of 2304 km

16102600, 024 hour forecast for 300mb RH and winds (knots) -- NCEP GFS

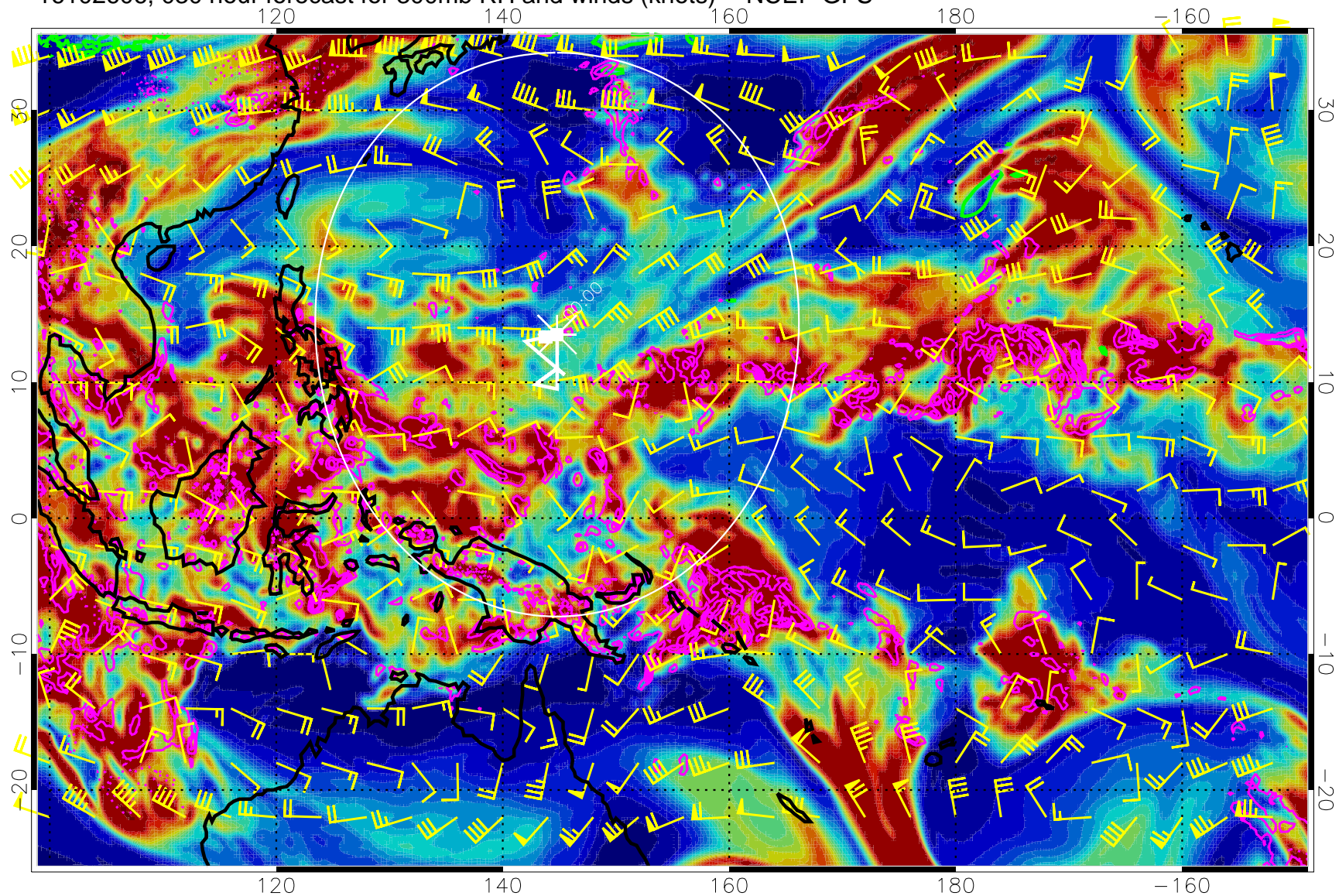


Precip (tot dot, conv sol) mm/day 40 mm/day contours, min 20

EPV Tropopause (2 PVU) Position

Range ring of 2304 km

16102606, 030 hour forecast for 300mb RH and winds (knots) -- NCEP GFS

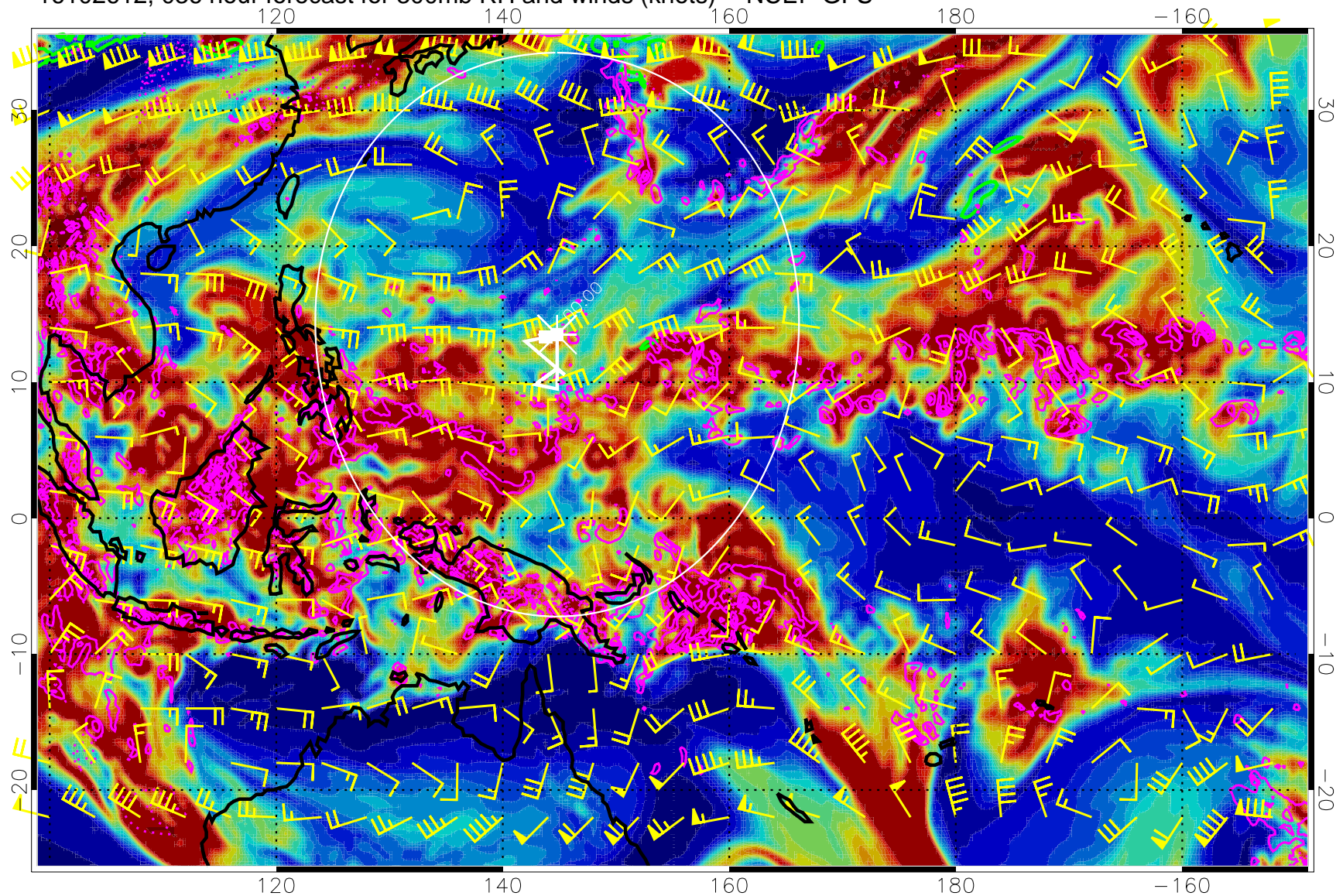


Precip (tot dot, conv sol) mm/day 40 mm/day contours, min 20

EPV Tropopause (2 PVU) Position

Range ring of 2304 km

16102612, 036 hour forecast for 300mb RH and winds (knots) -- NCEP GFS



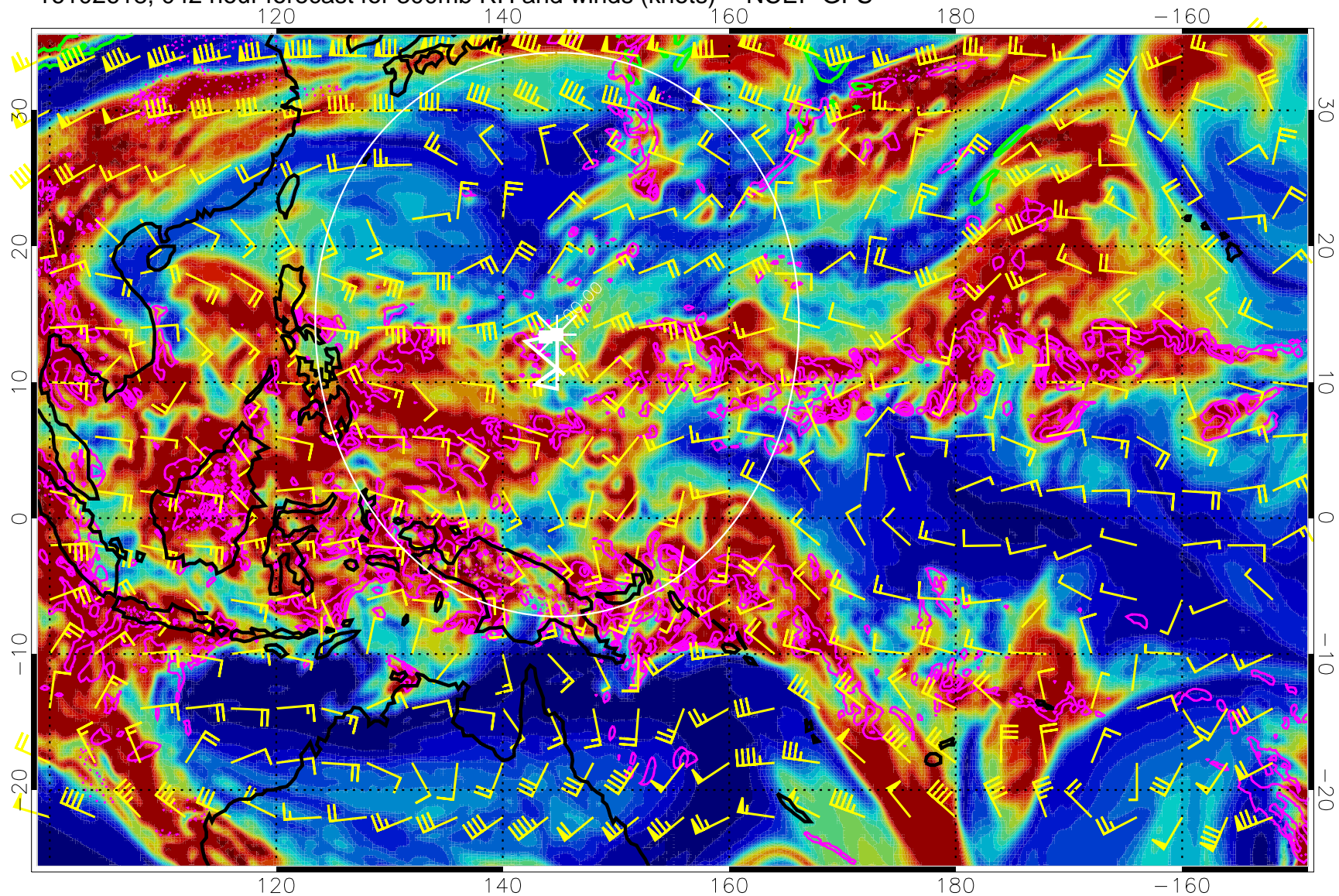
0 20 40 60 80 100
RH, %

Precip (tot dot, conv sol) mm/day 40 mm/day contours, min 20

EPV Tropopause (2 PVU) Position

Range ring of 2304 km

16102618, 042 hour forecast for 300mb RH and winds (knots) -- NCEP GFS

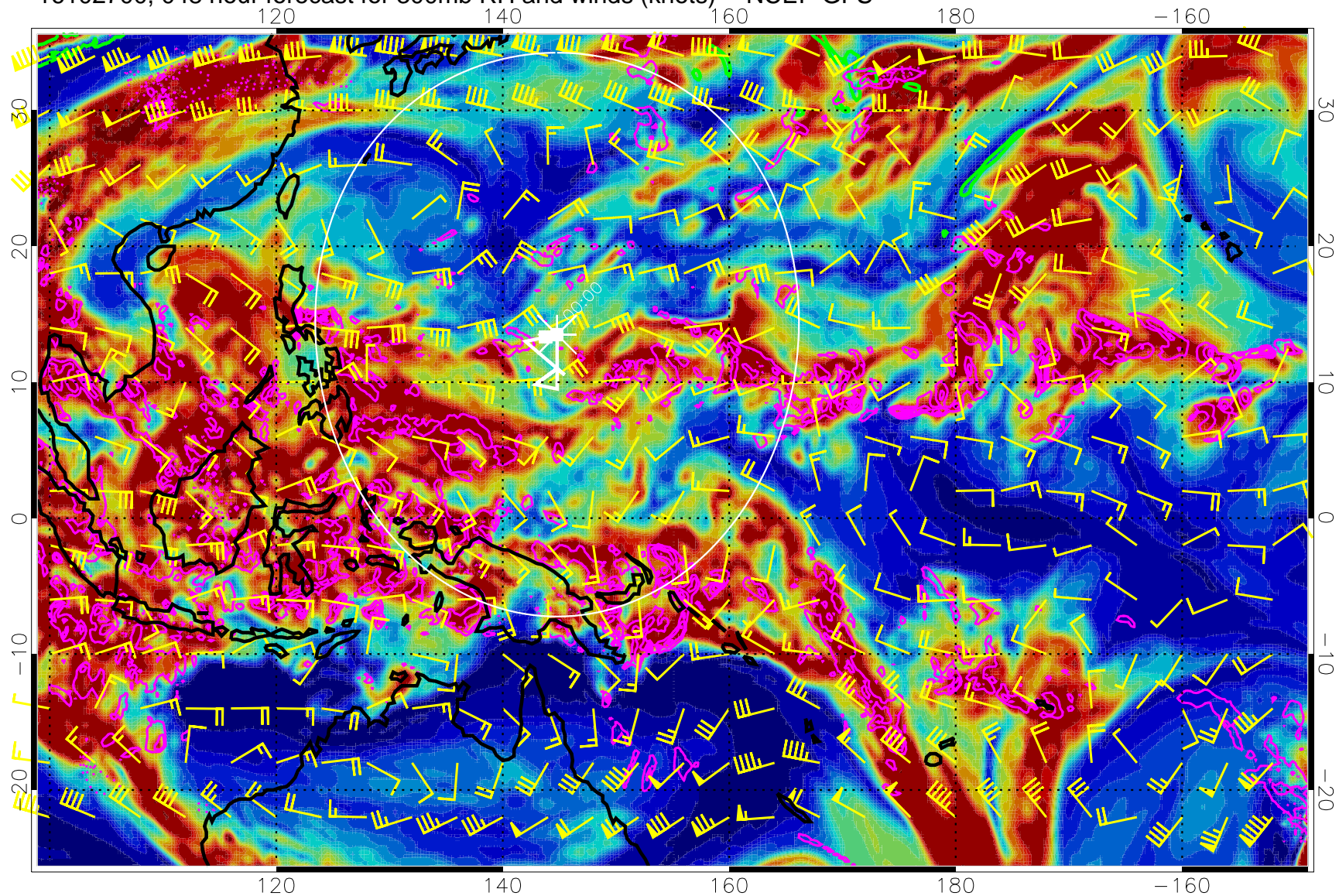


Precip (tot dot, conv sol) mm/day 40 mm/day contours, min 20

EPV Tropopause (2 PVU) Position

Range ring of 2304 km

16102700, 048 hour forecast for 300mb RH and winds (knots) -- NCEP GFS

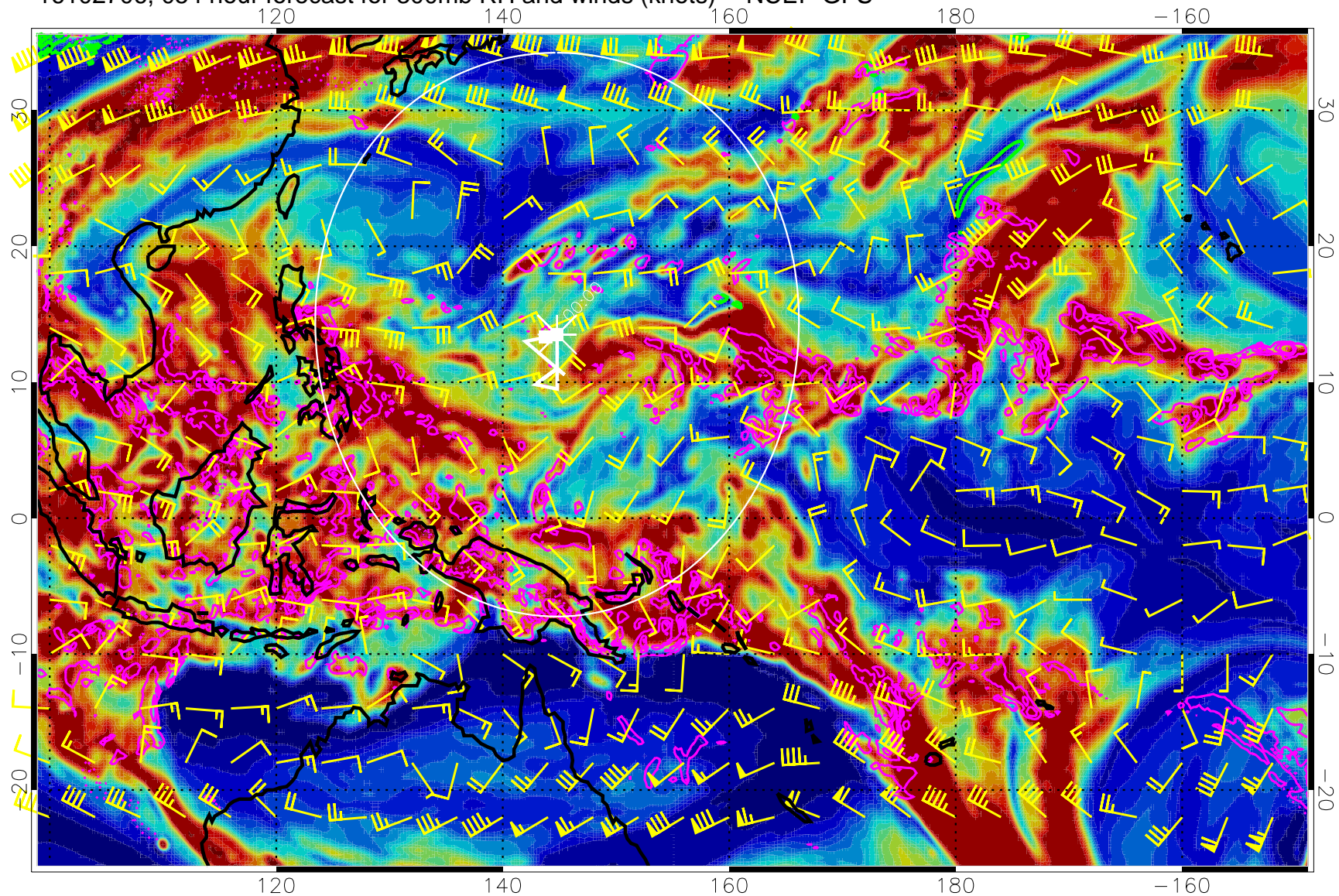


Precip (tot dot, conv sol) mm/day 40 mm/day contours, min 20

EPV Tropopause (2 PVU) Position

Range ring of 2304 km

16102706, 054 hour forecast for 300mb RH and winds (knots) -- NCEP GFS

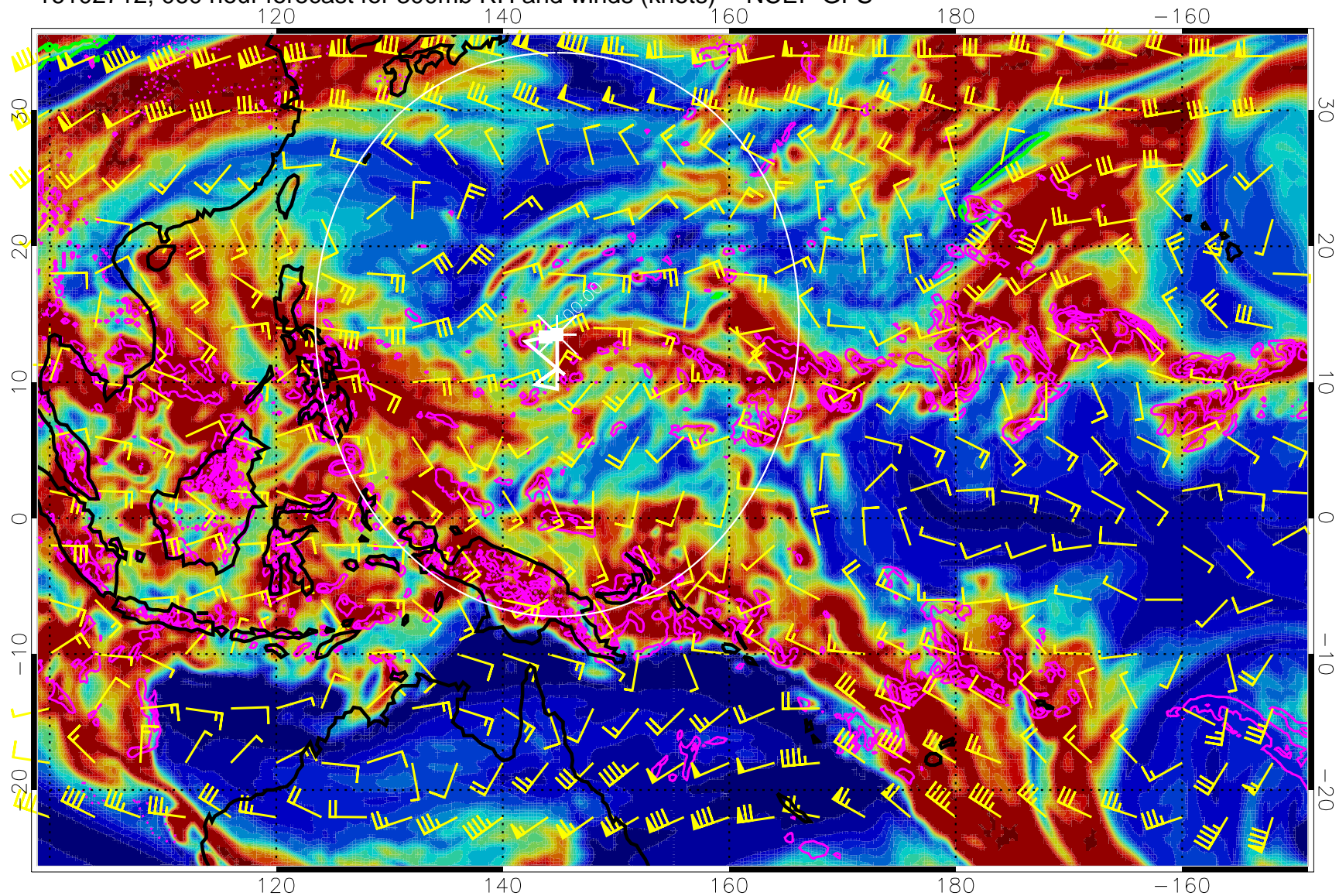


Precip (tot dot, conv sol) mm/day 40 mm/day contours, min 20

EPV Tropopause (2 PVU) Position

Range ring of 2304 km

16102712, 060 hour forecast for 300mb RH and winds (knots) -- NCEP GFS

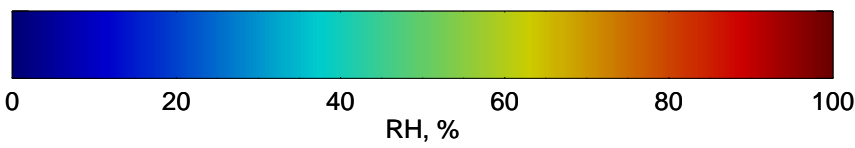
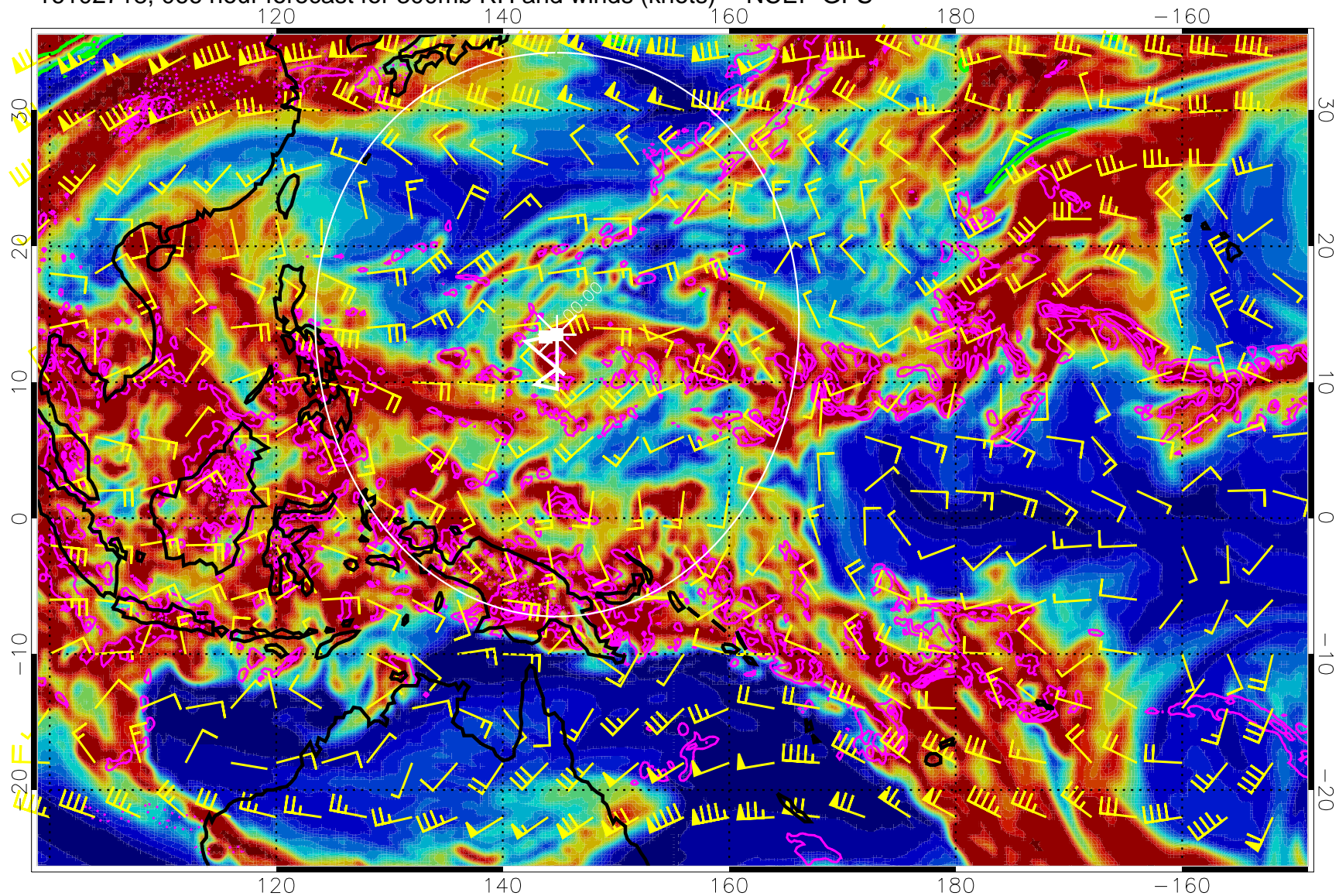


Precip (tot dot, conv sol) mm/day 40 mm/day contours, min 20

EPV Tropopause (2 PVU) Position

Range ring of 2304 km

16102718, 066 hour forecast for 300mb RH and winds (knots) -- NCEP GFS

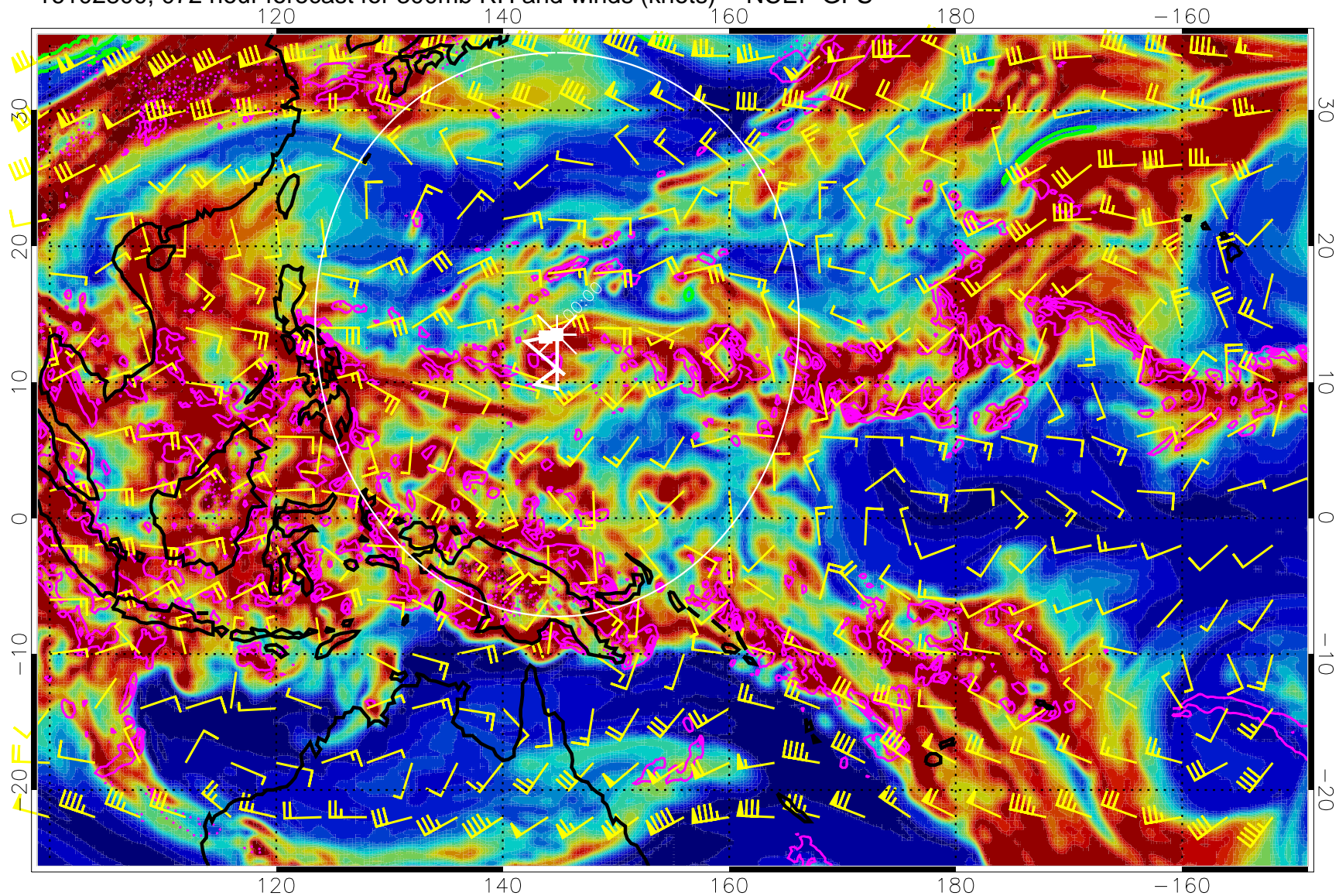


Precip (tot dot, conv sol) mm/day 40 mm/day contours, min 20

EPV Tropopause (2 PVU) Position

Range ring of 2304 km

16102800, 072 hour forecast for 300mb RH and winds (knots) -- NCEP GFS

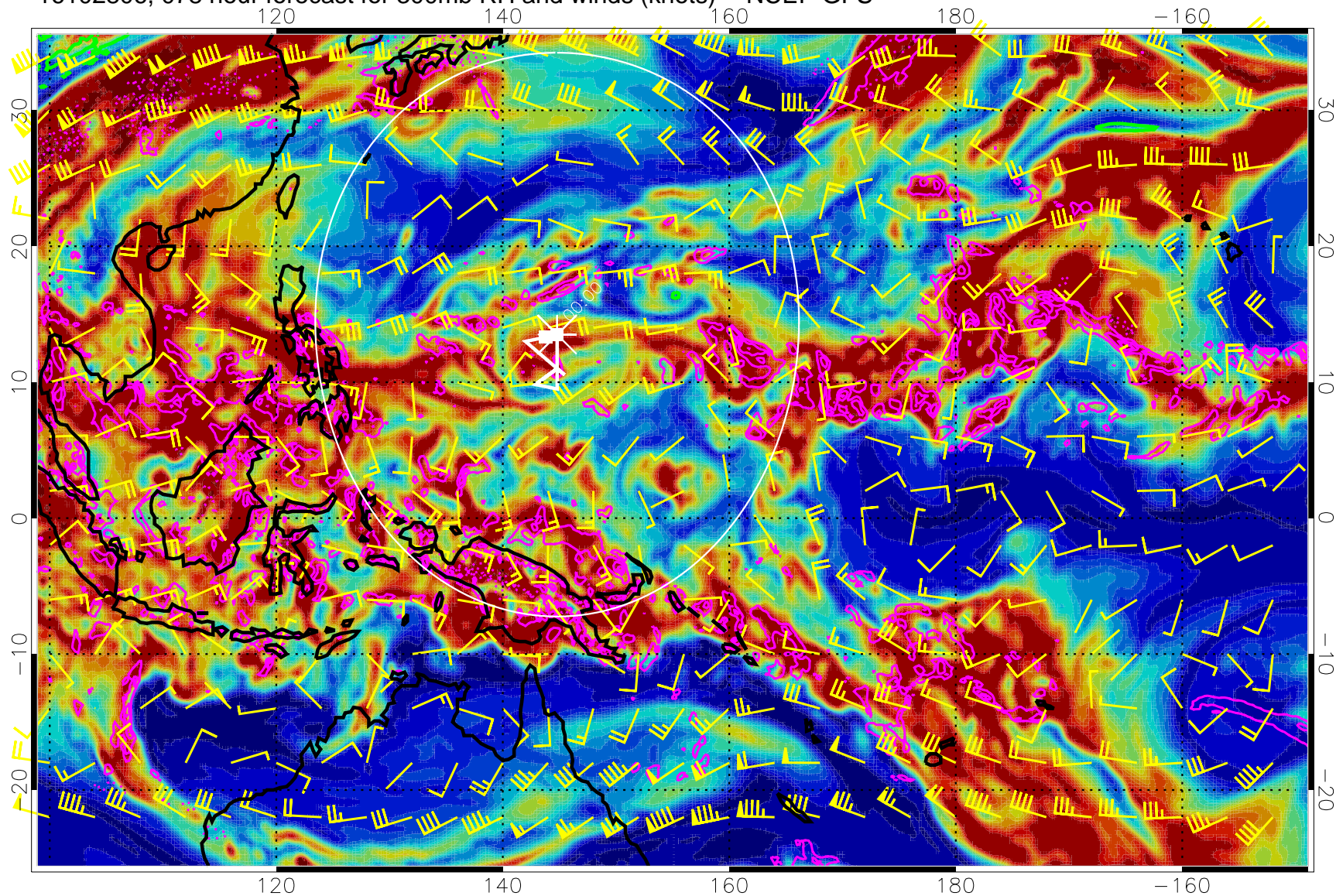


Precip (tot dot, conv sol) mm/day 40 mm/day contours, min 20

EPV Tropopause (2 PVU) Position

Range ring of 2304 km

16102806, 078 hour forecast for 300mb RH and winds (knots) -- NCEP GFS

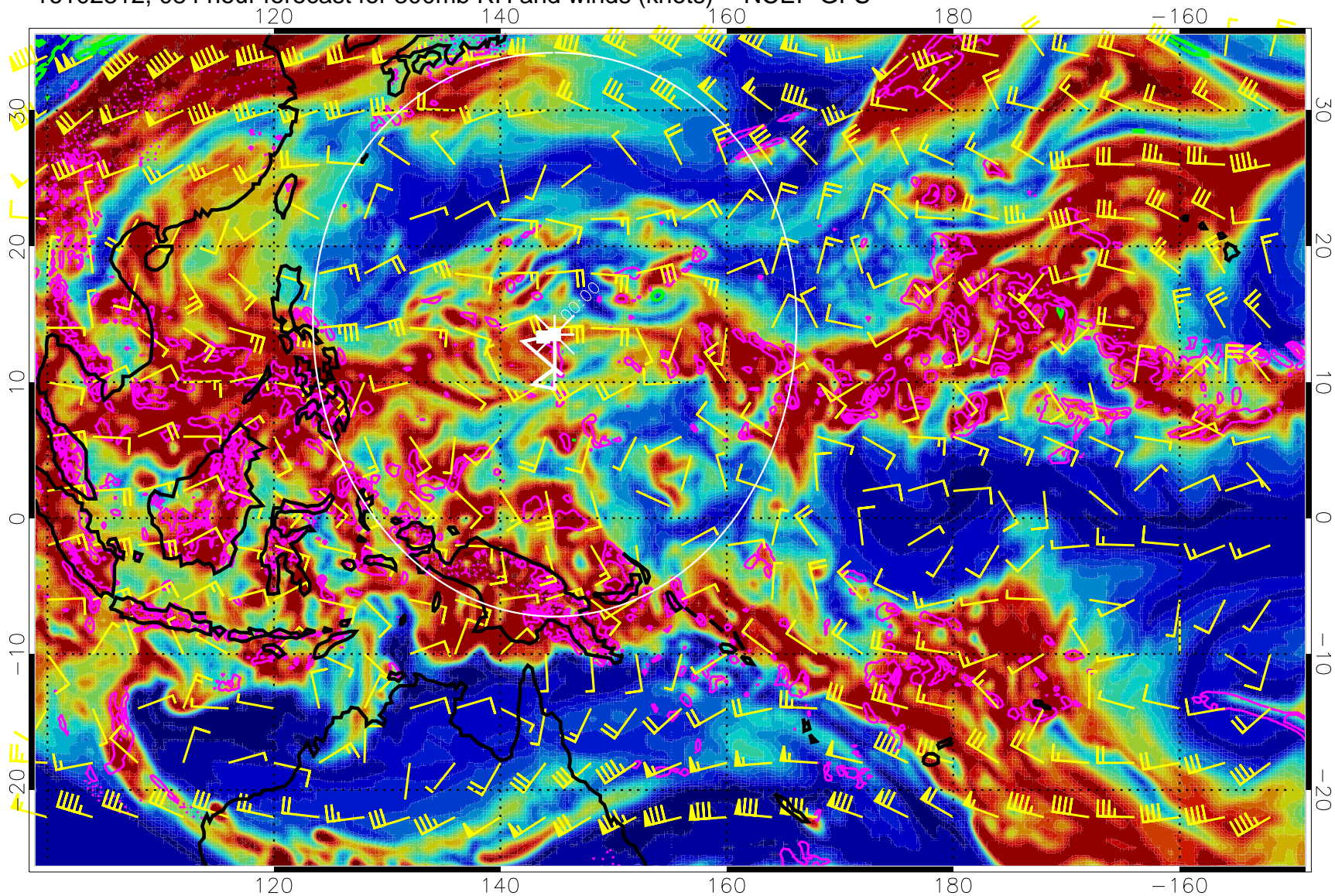


Precip (tot dot, conv sol) mm/day 40 mm/day contours, min 20

EPV Tropopause (2 PVU) Position

Range ring of 2304 km

16102812, 084 hour forecast for 300mb RH and winds (knots) -- NCEP GFS

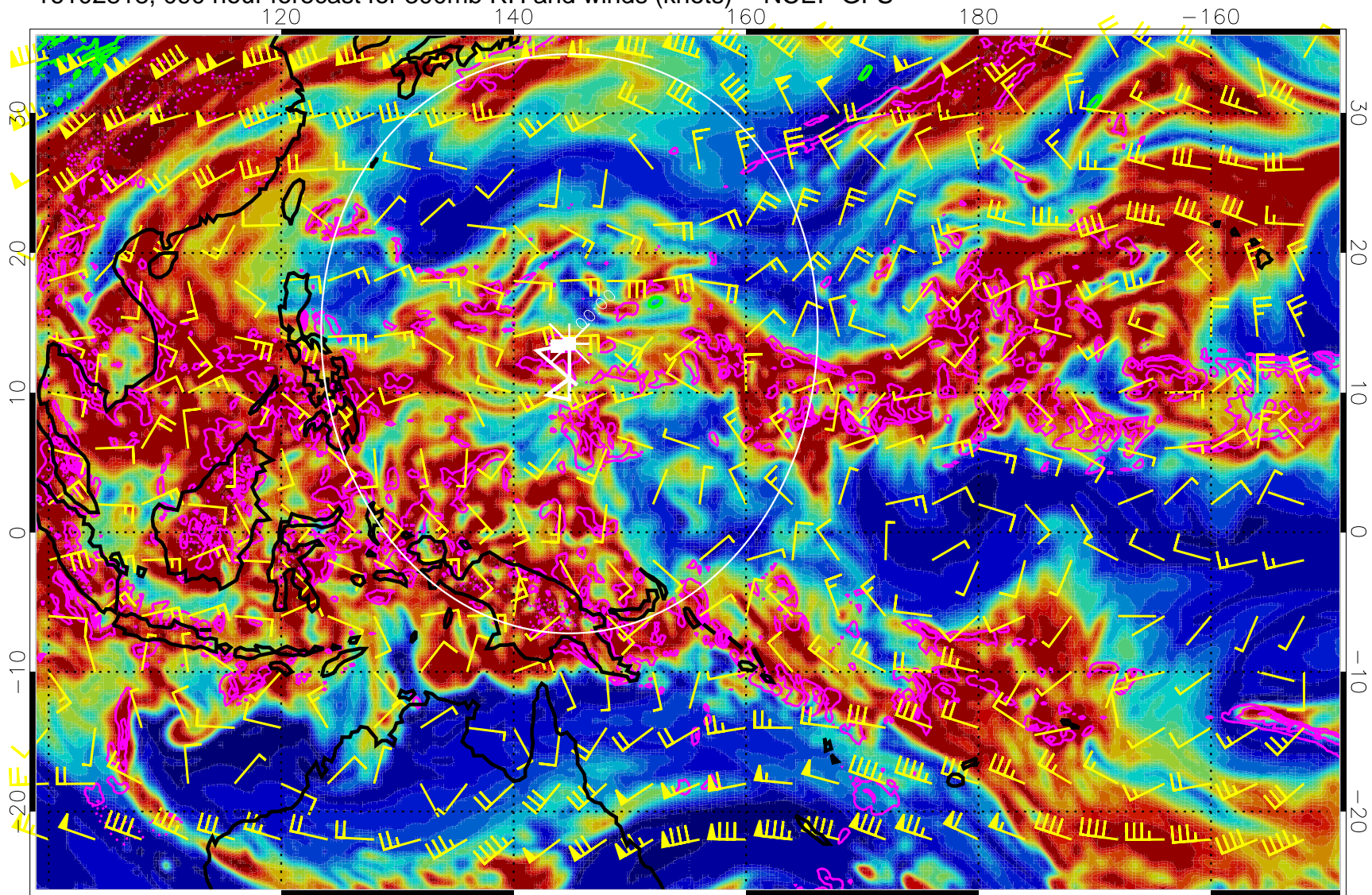


Precip (tot dot, conv sol) mm/day 40 mm/day contours, min 20

EPV Tropopause (2 PVU) Position

Range ring of 2304 km

16102818, 090 hour forecast for 300mb RH and winds (knots) -- NCEP GFS

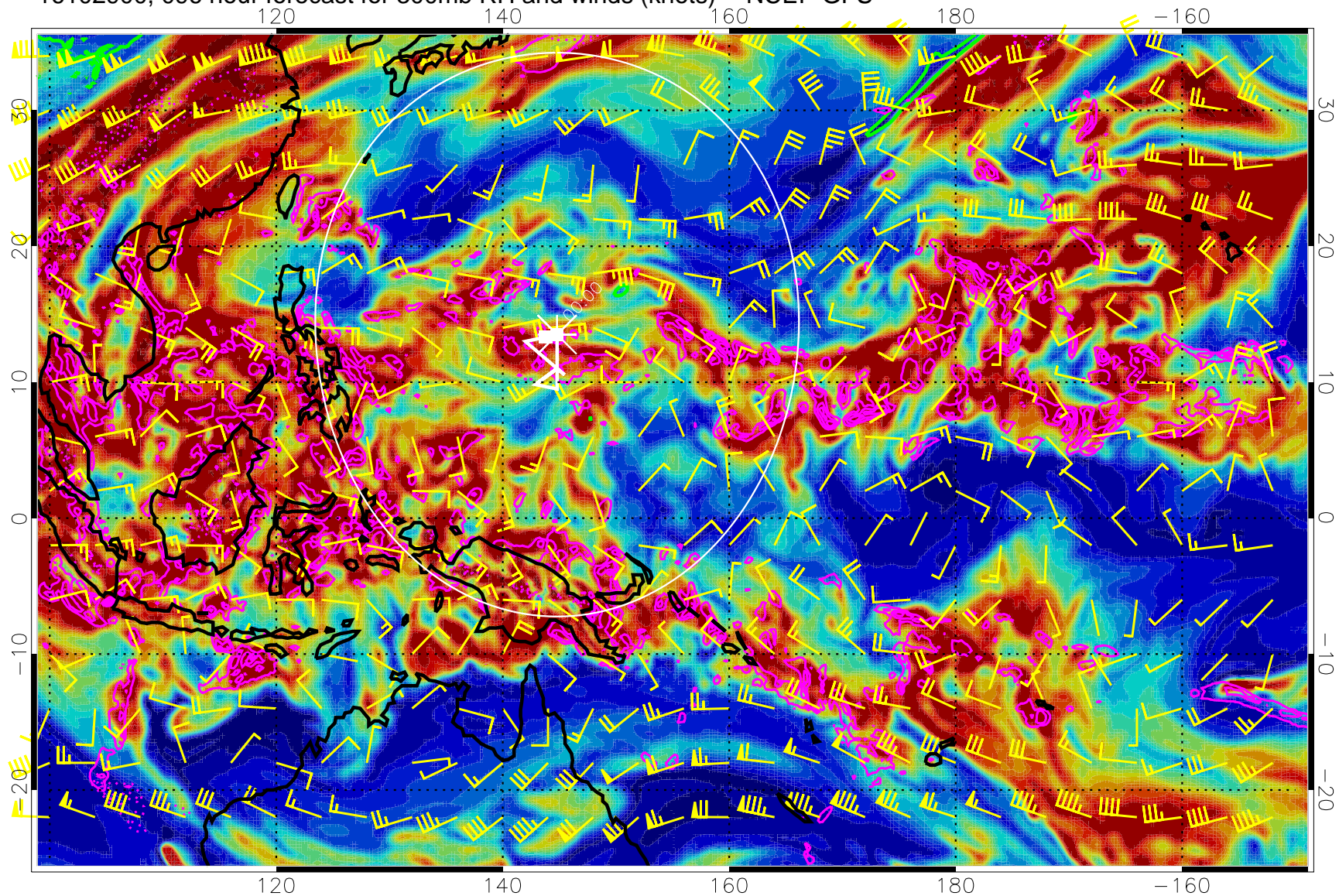


Precip (tot dot, conv sol) mm/day 40 mm/day contours, min 20

EPV Tropopause (2 PVU) Position

Range ring of 2304 km

16102900, 096 hour forecast for 300mb RH and winds (knots) -- NCEP GFS

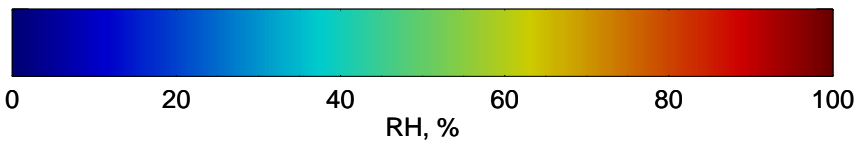
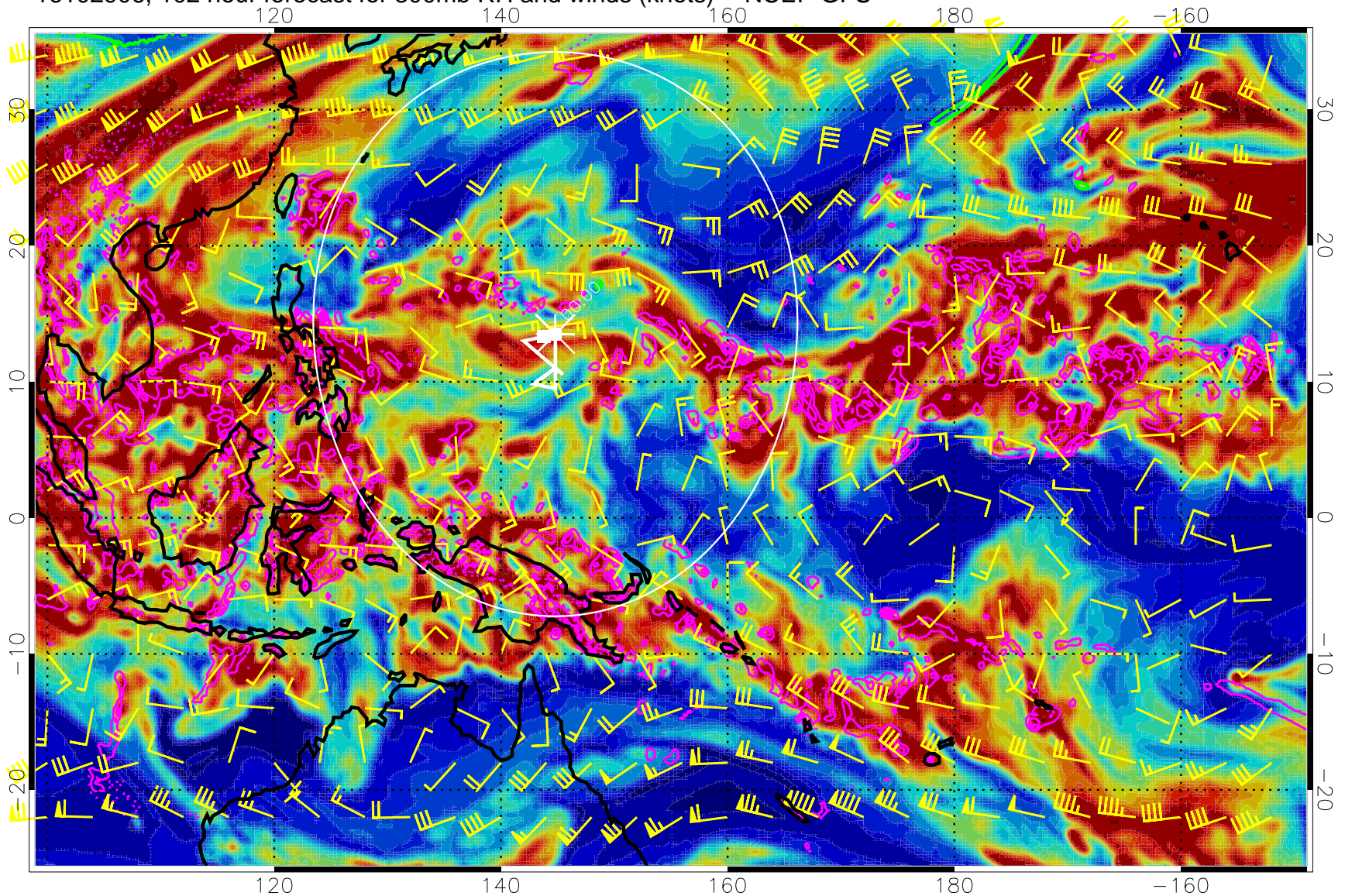


Precip (tot dot, conv sol) mm/day 40 mm/day contours, min 20

EPV Tropopause (2 PVU) Position

Range ring of 2304 km

16102906, 102 hour forecast for 300mb RH and winds (knots) -- NCEP GFS

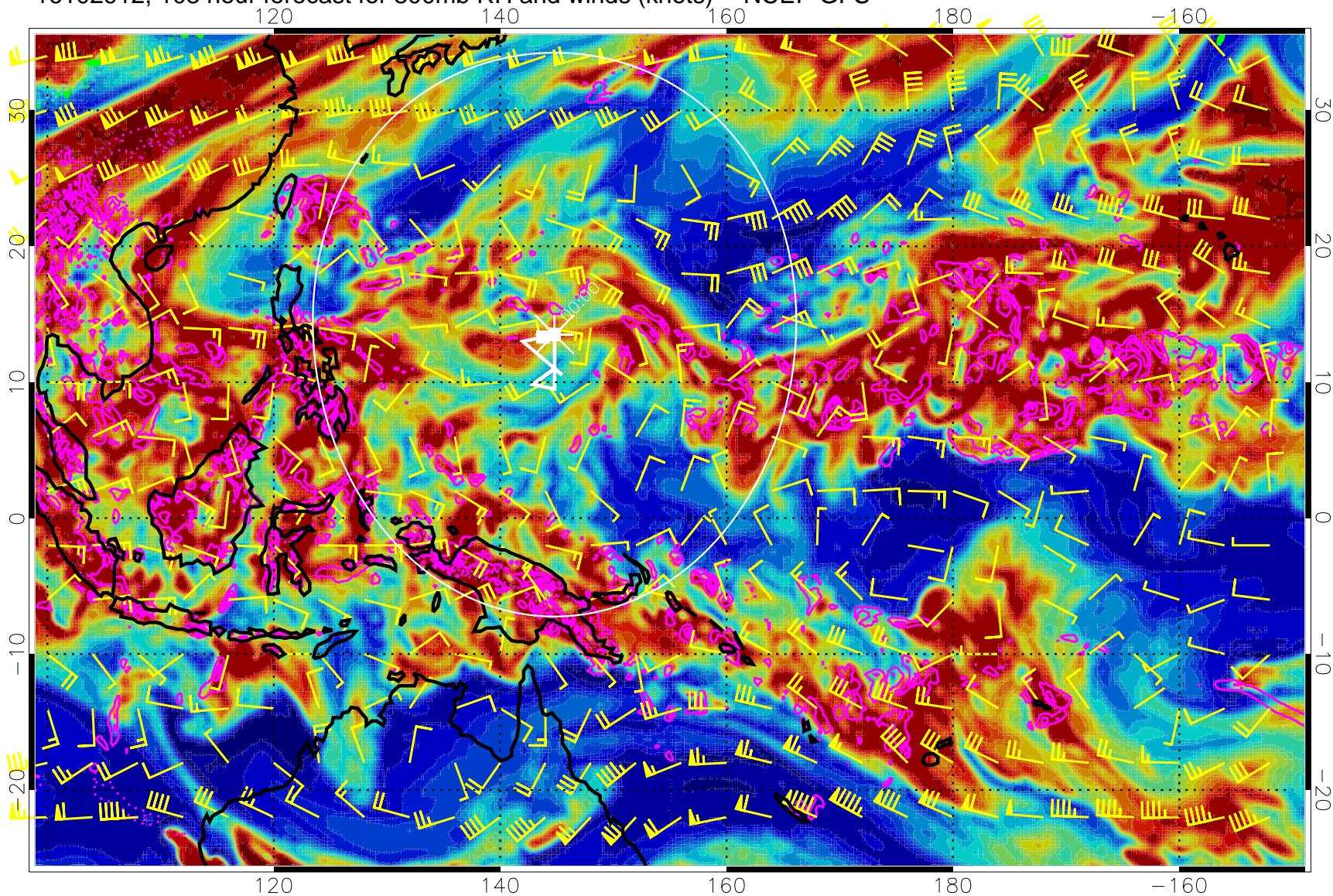


Precip (tot dot, conv sol) mm/day 40 mm/day contours, min 20

EPV Tropopause (2 PVU) Position

Range ring of 2304 km

16102912, 108 hour forecast for 300mb RH and winds (knots) -- NCEP GFS

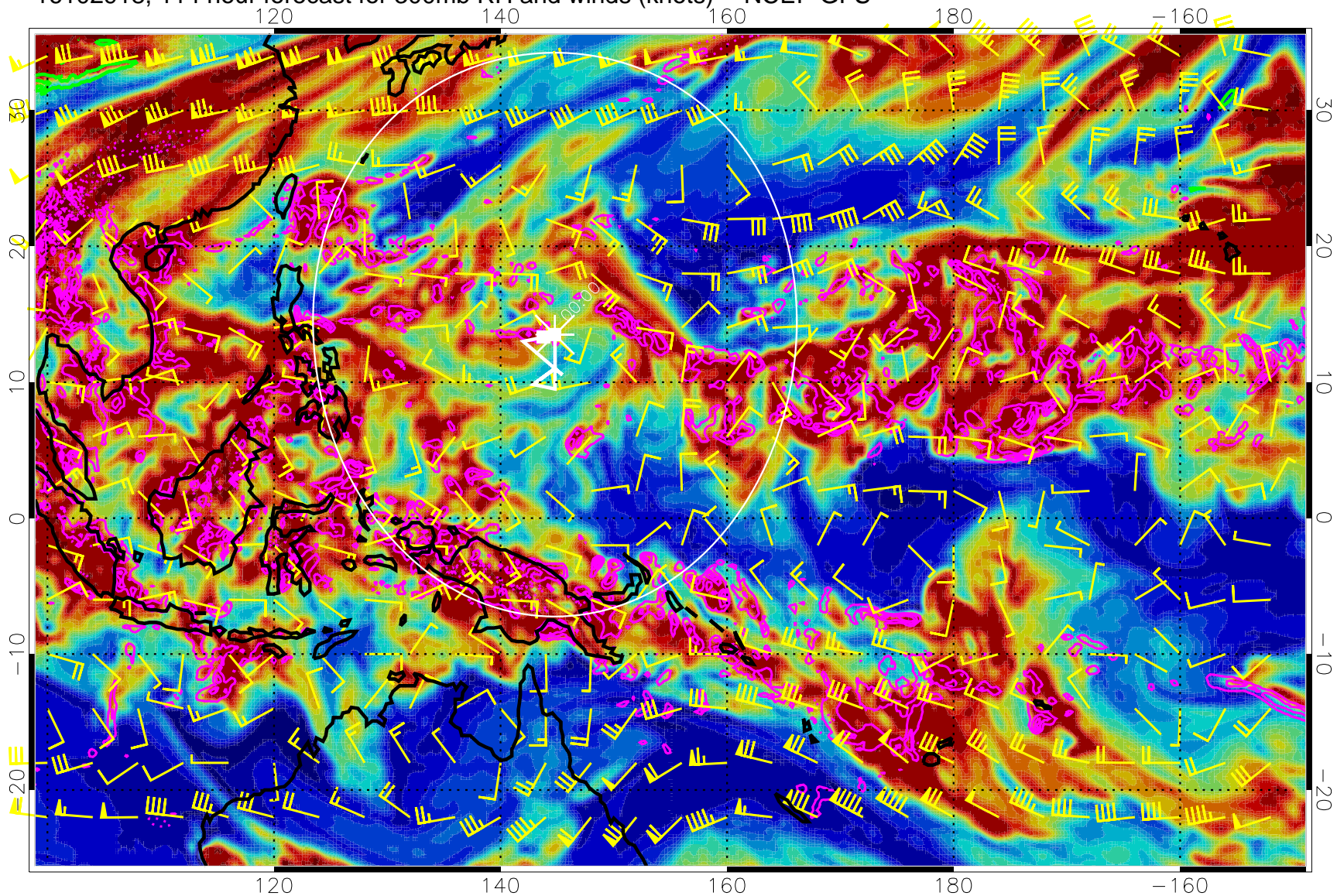


Precip (tot dot, conv sol) mm/day 40 mm/day contours, min 20

EPV Tropopause (2 PVU) Position

Range ring of 2304 km

16102918, 114 hour forecast for 300mb RH and winds (knots) -- NCEP GFS

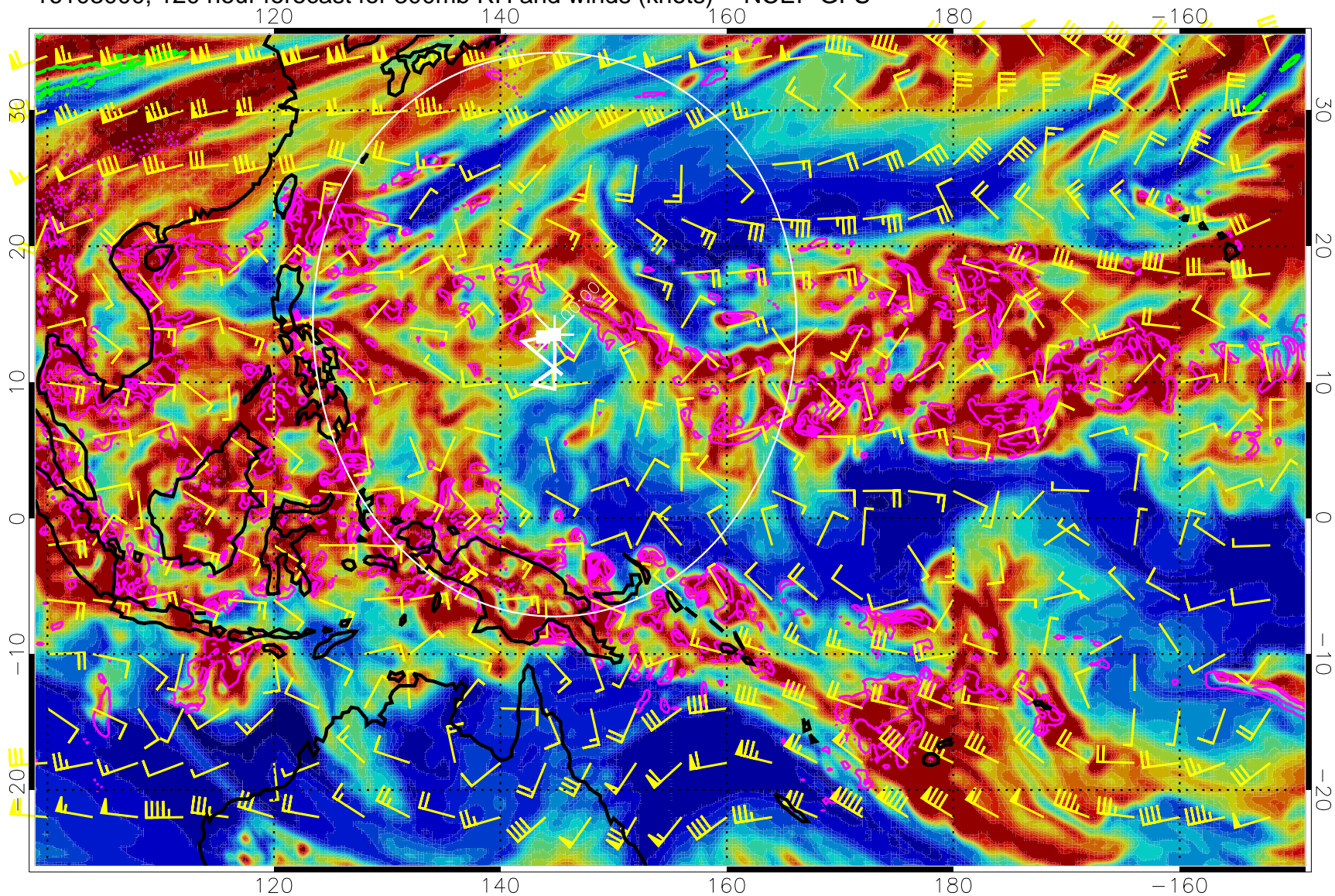


Precip (tot dot, conv sol) mm/day 40 mm/day contours, min 20

EPV Tropopause (2 PVU) Position

Range ring of 2304 km

16103000, 120 hour forecast for 300mb RH and winds (knots) -- NCEP GFS



Precip (tot dot, conv sol) mm/day 40 mm/day contours, min 20

EPV Tropopause (2 PVU) Position

Range ring of 2304 km