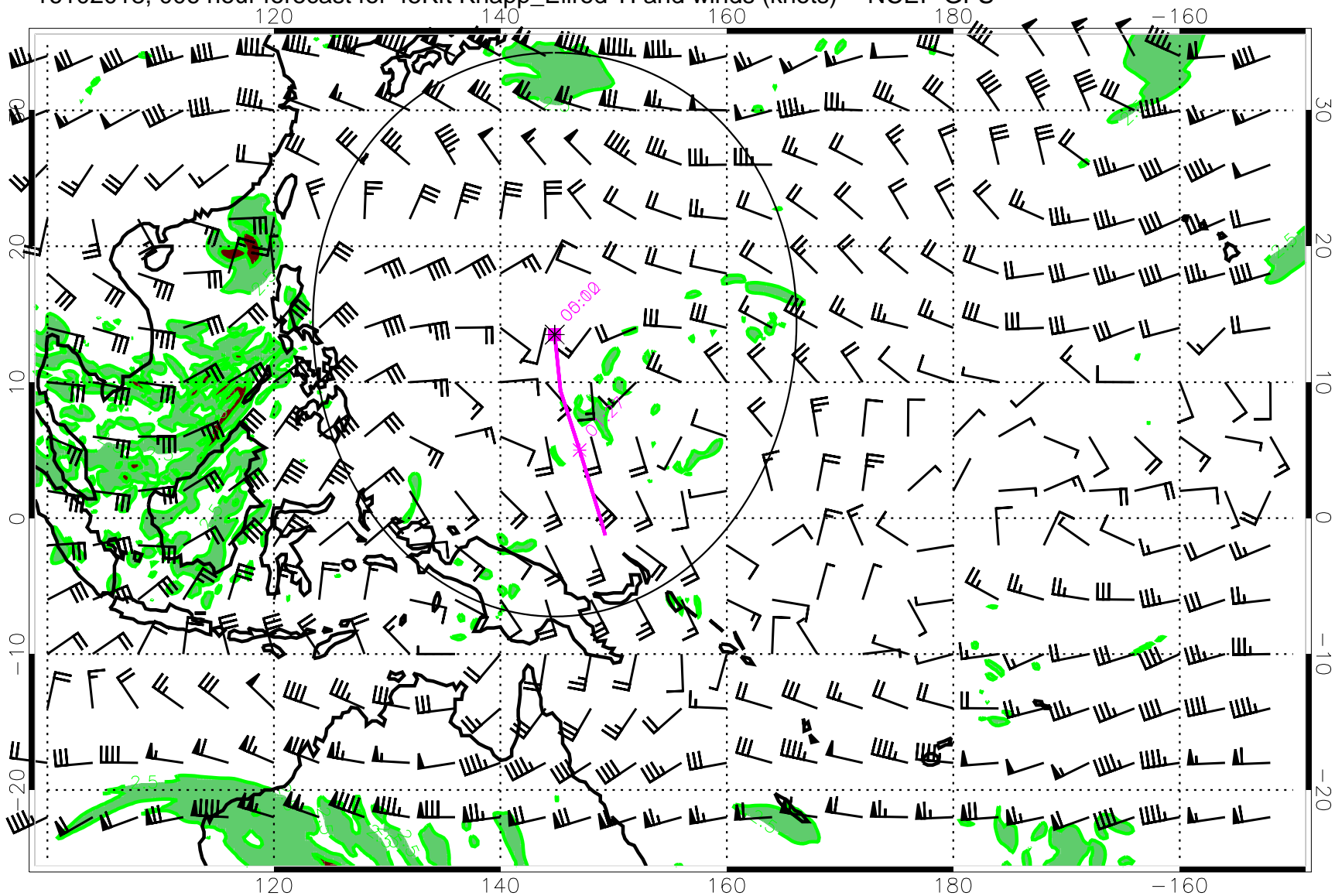
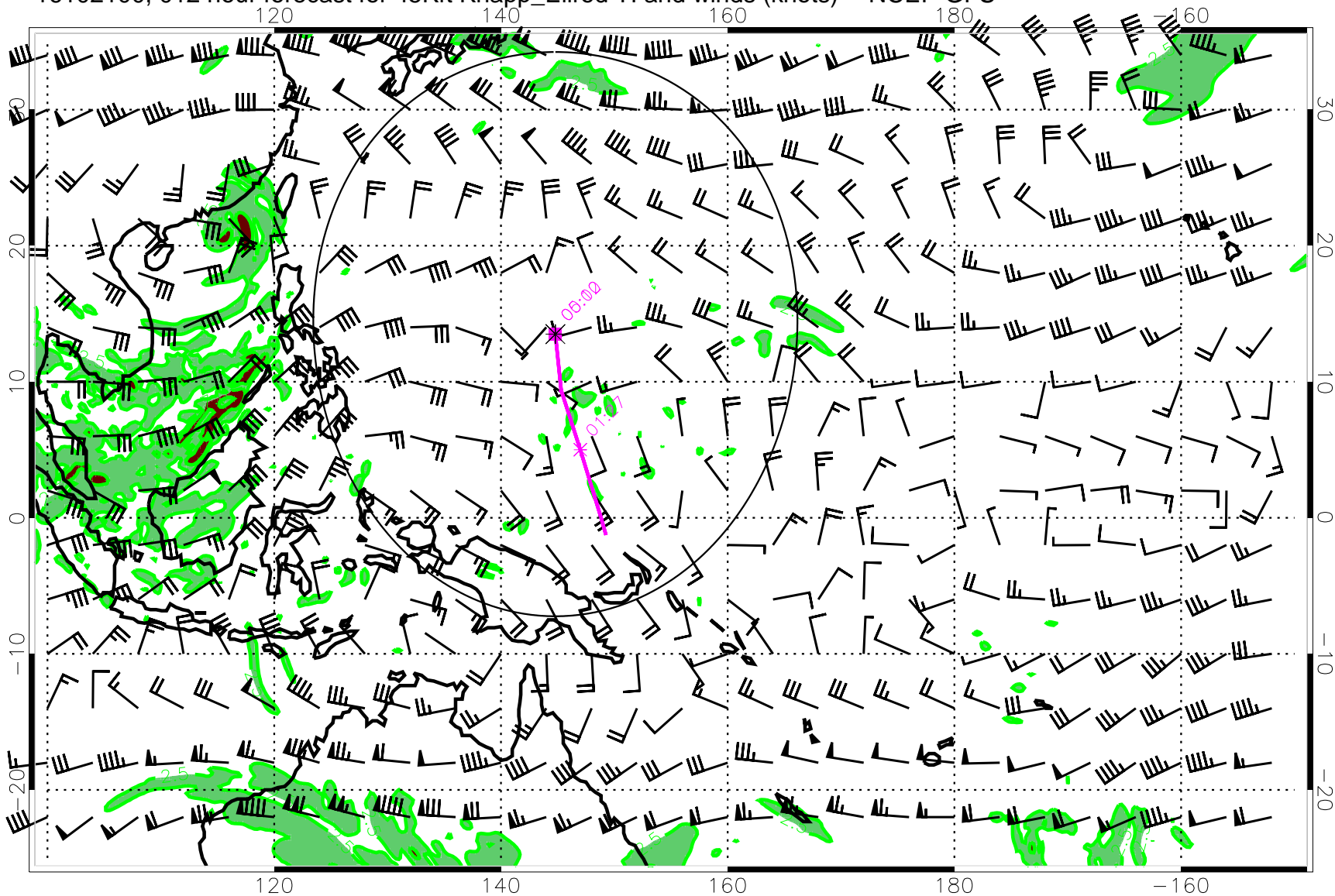


16102018, 006 hour forecast for 45Kft Knapp_Ellrod TI and winds (knots) -- NCEP GFS



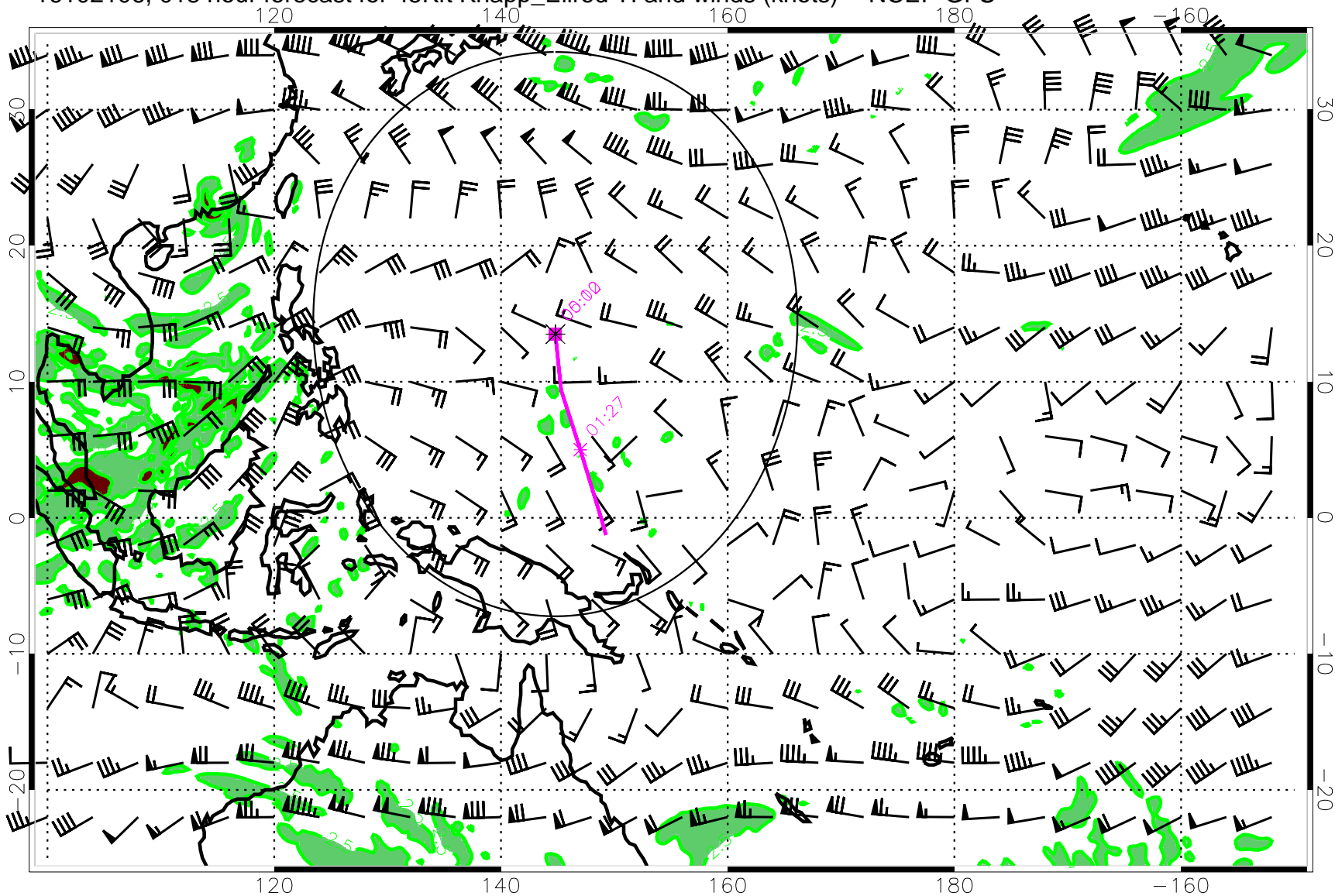
Turb value = 7 Turb value = 2.5

16102100, 012 hour forecast for 45Kft Knapp_Ellrod TI and winds (knots) -- NCEP GFS



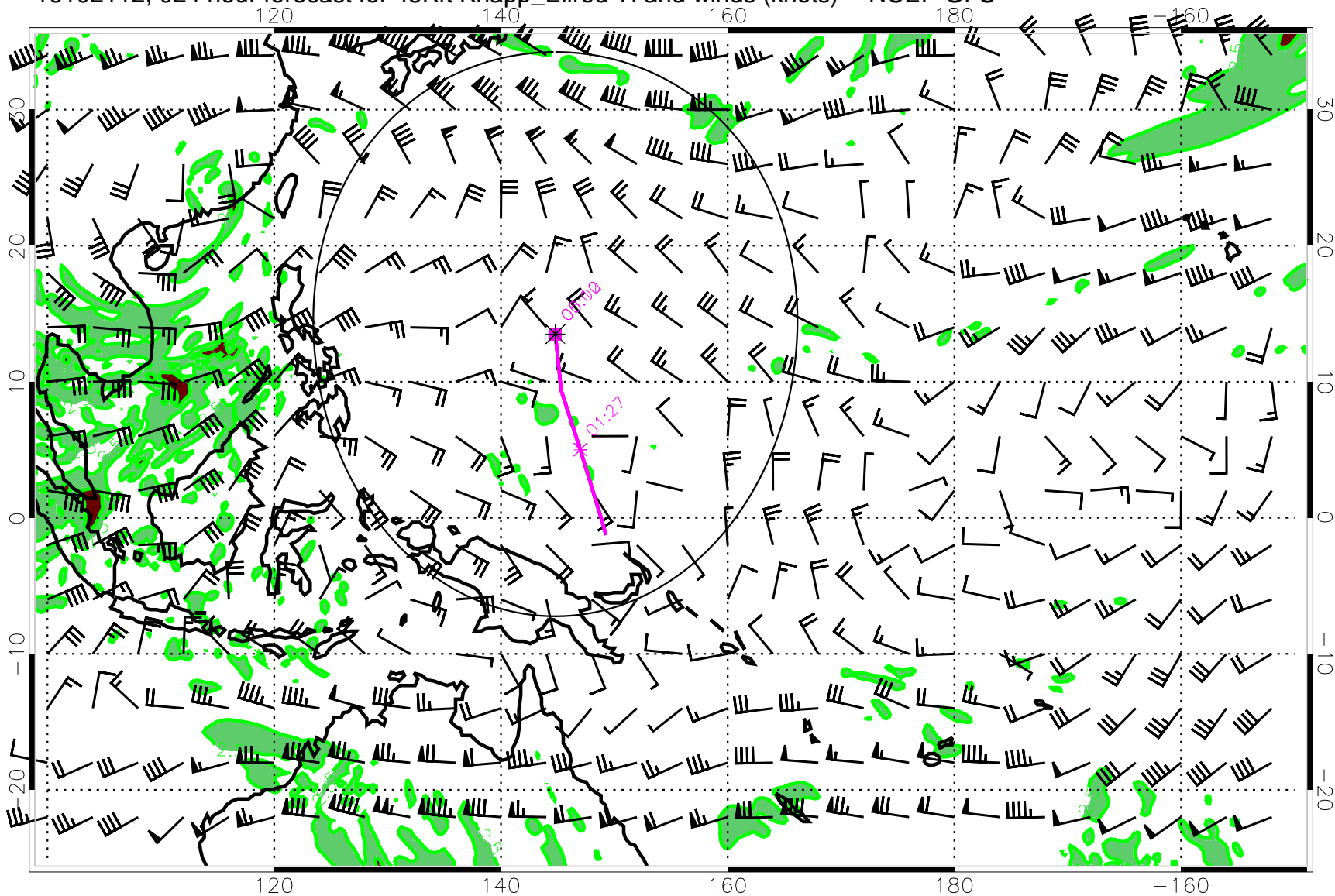
Turb value = 7 Turb value = 2.5

16102106, 018 hour forecast for 45Kft Knapp_Ellrod TI and winds (knots) -- NCEP GFS



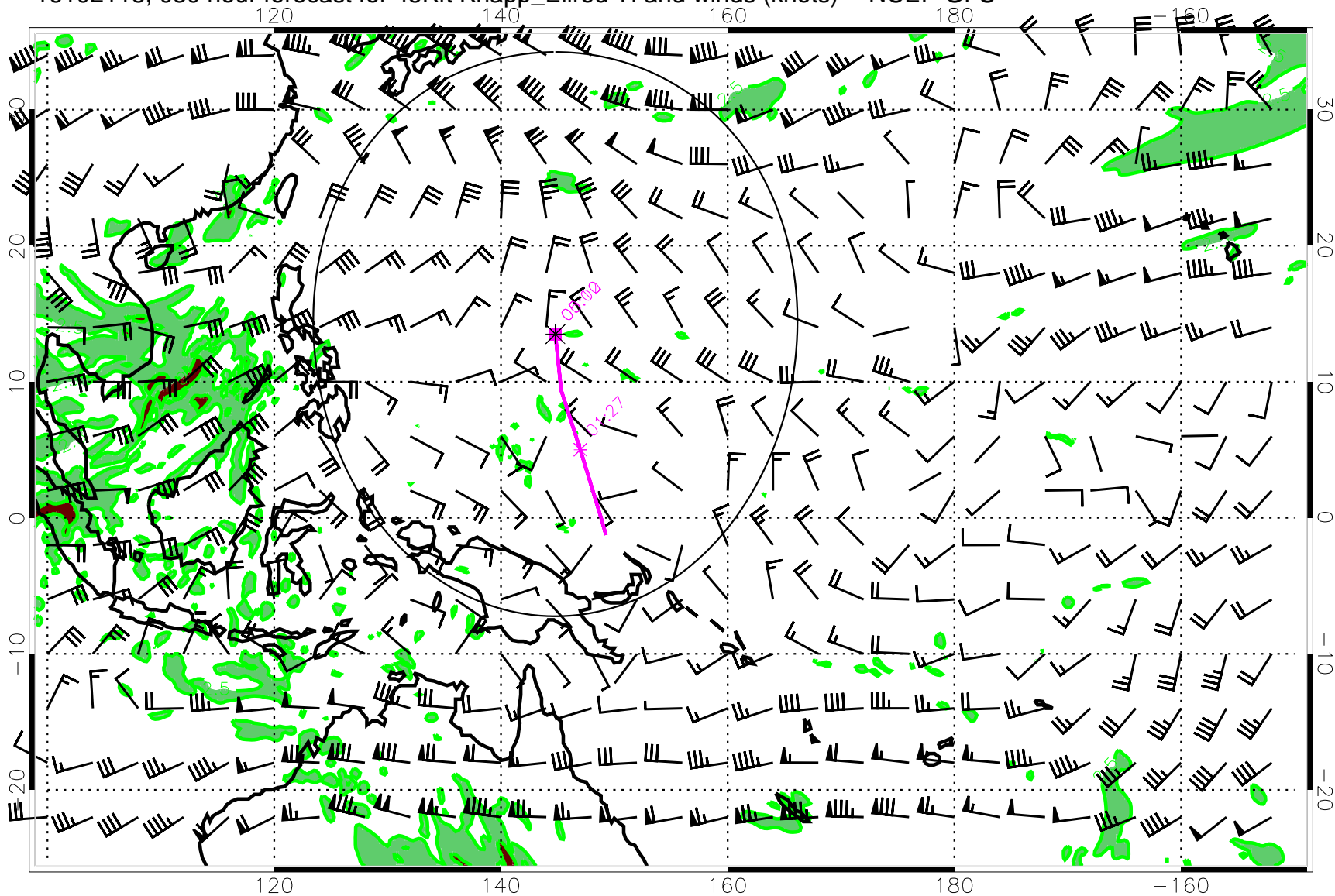
Turb value = 7 Turb value = 2.5

16102112, 024 hour forecast for 45Kft Knapp_Ellrod TI and winds (knots) -- NCEP GFS



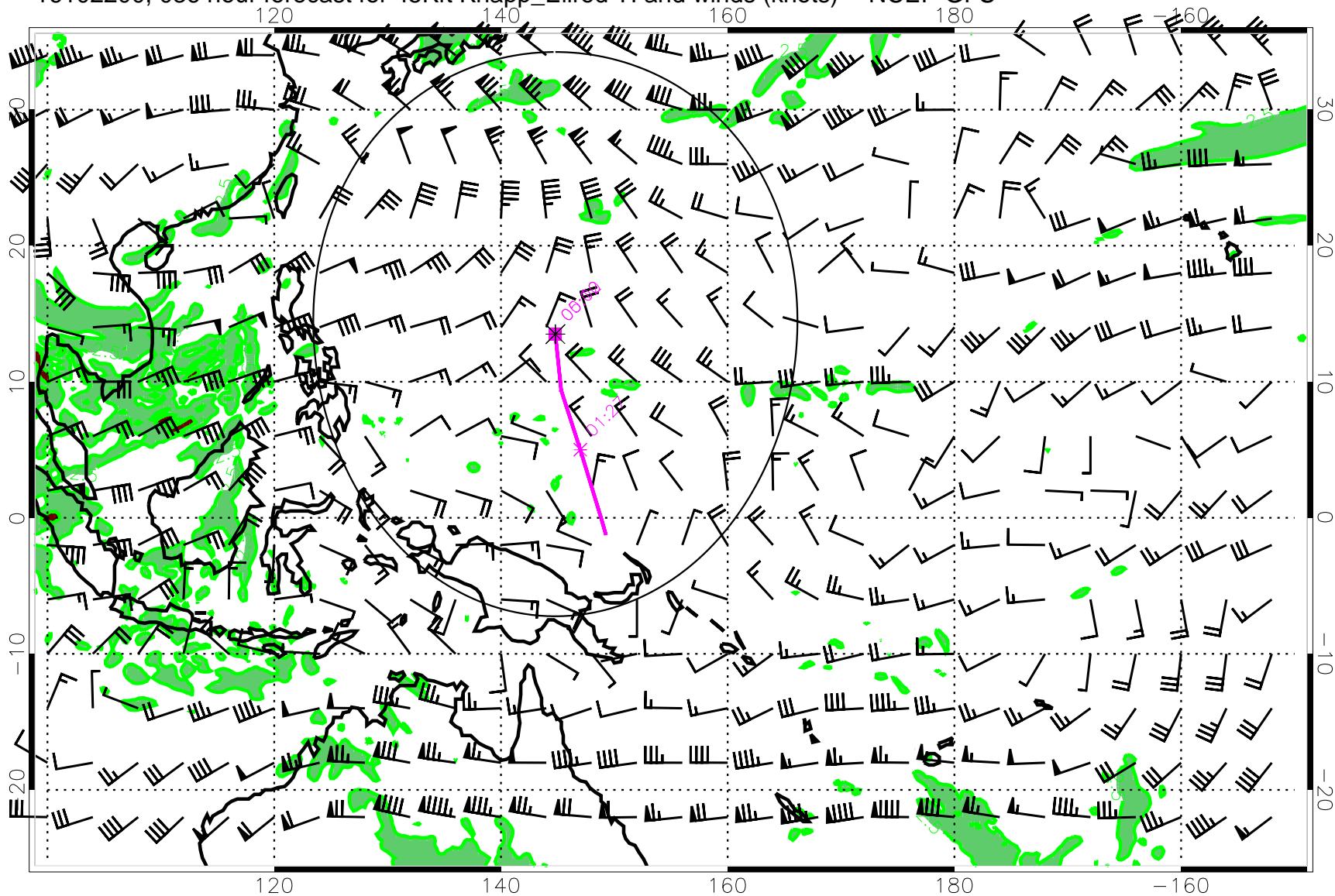
Turb value = 7 Turb value = 2.5

16102118, 030 hour forecast for 45Kft Knapp_Ellrod TI and winds (knots) -- NCEP GFS



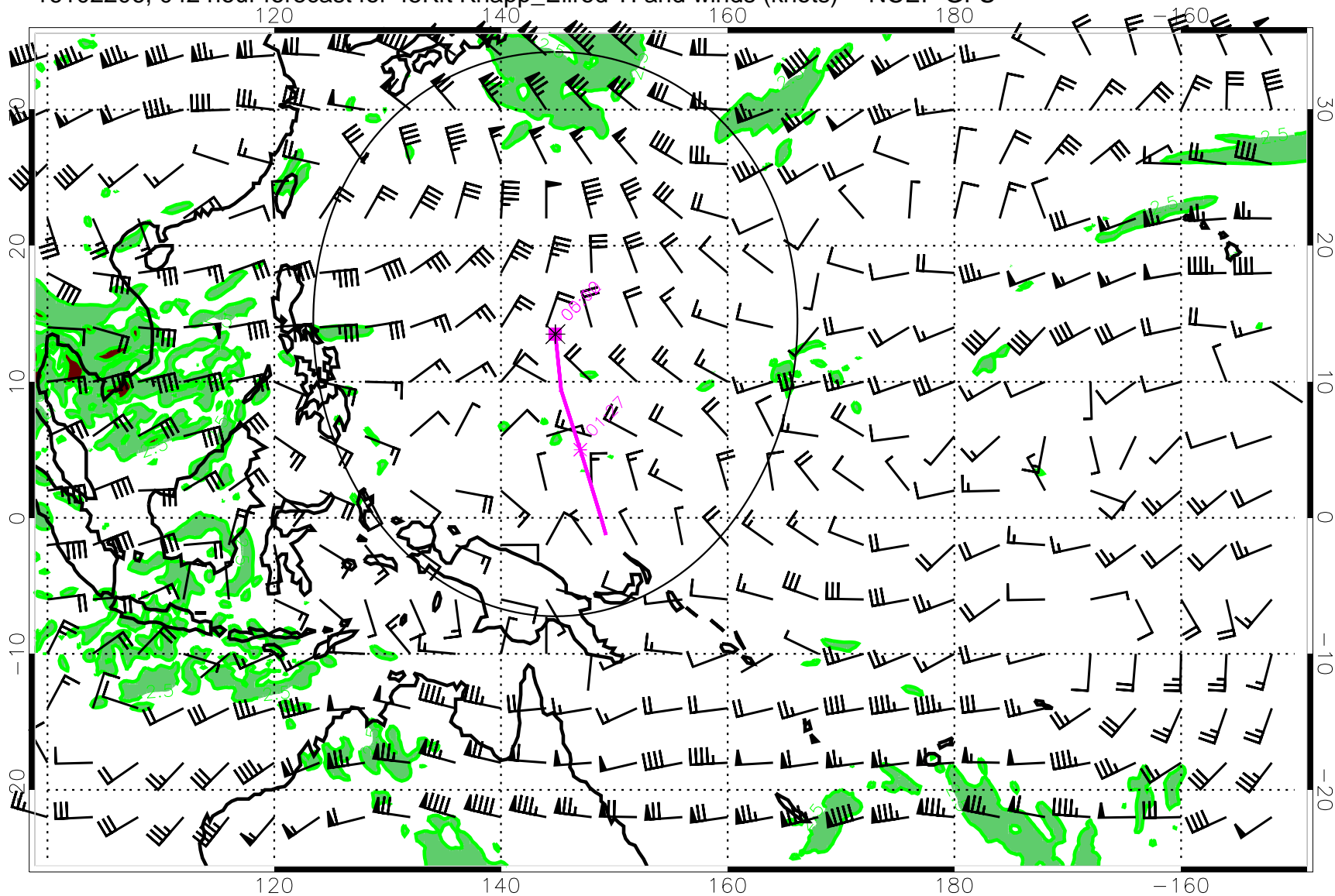
Turb value = 7 Turb value = 2.5

16102200, 036 hour forecast for 45Kft Knapp_Ellrod TI and winds (knots) -- NCEP GFS



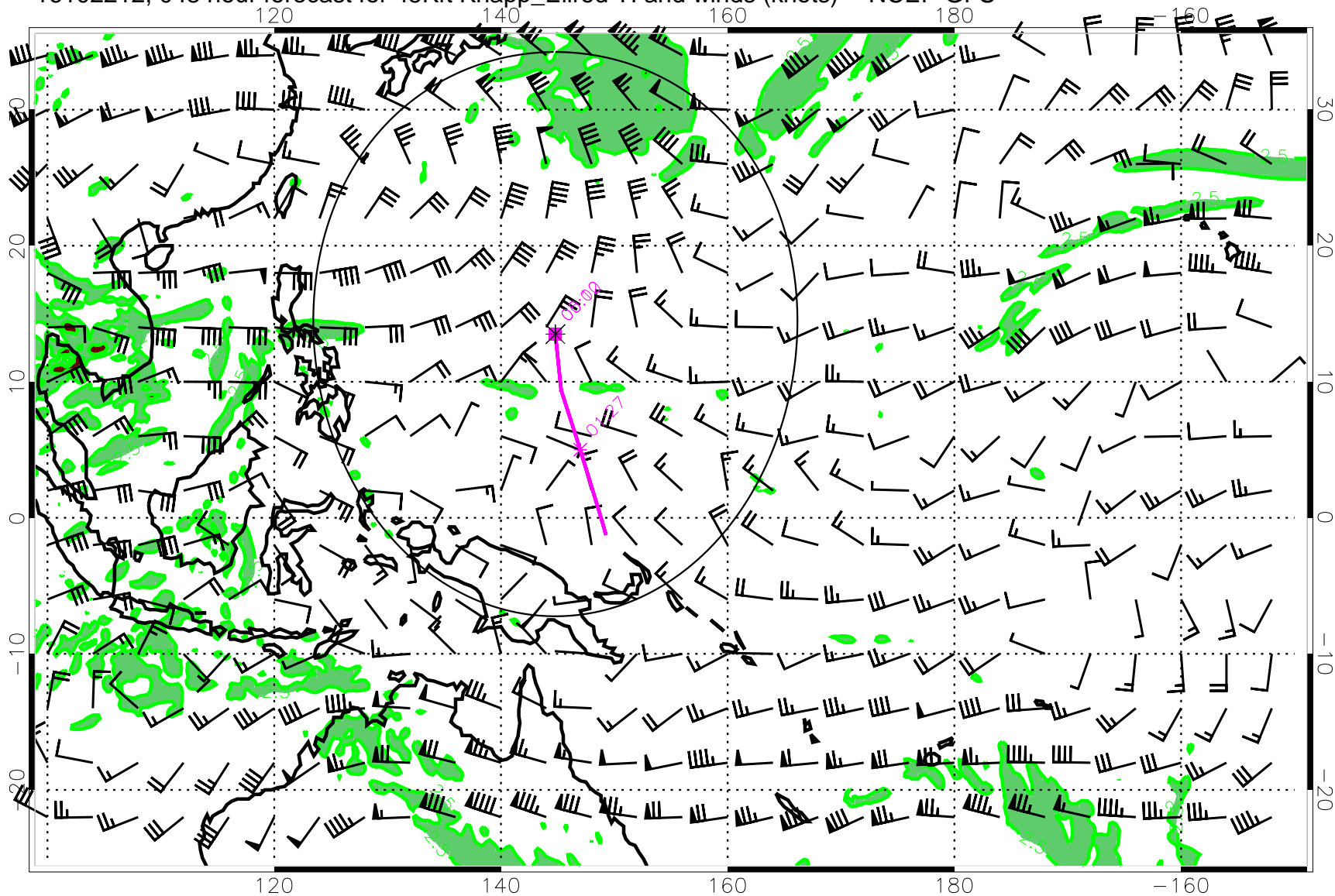
Turb value = 7 Turb value = 2.5

16102206, 042 hour forecast for 45Kft Knapp_Ellrod TI and winds (knots) -- NCEP GFS



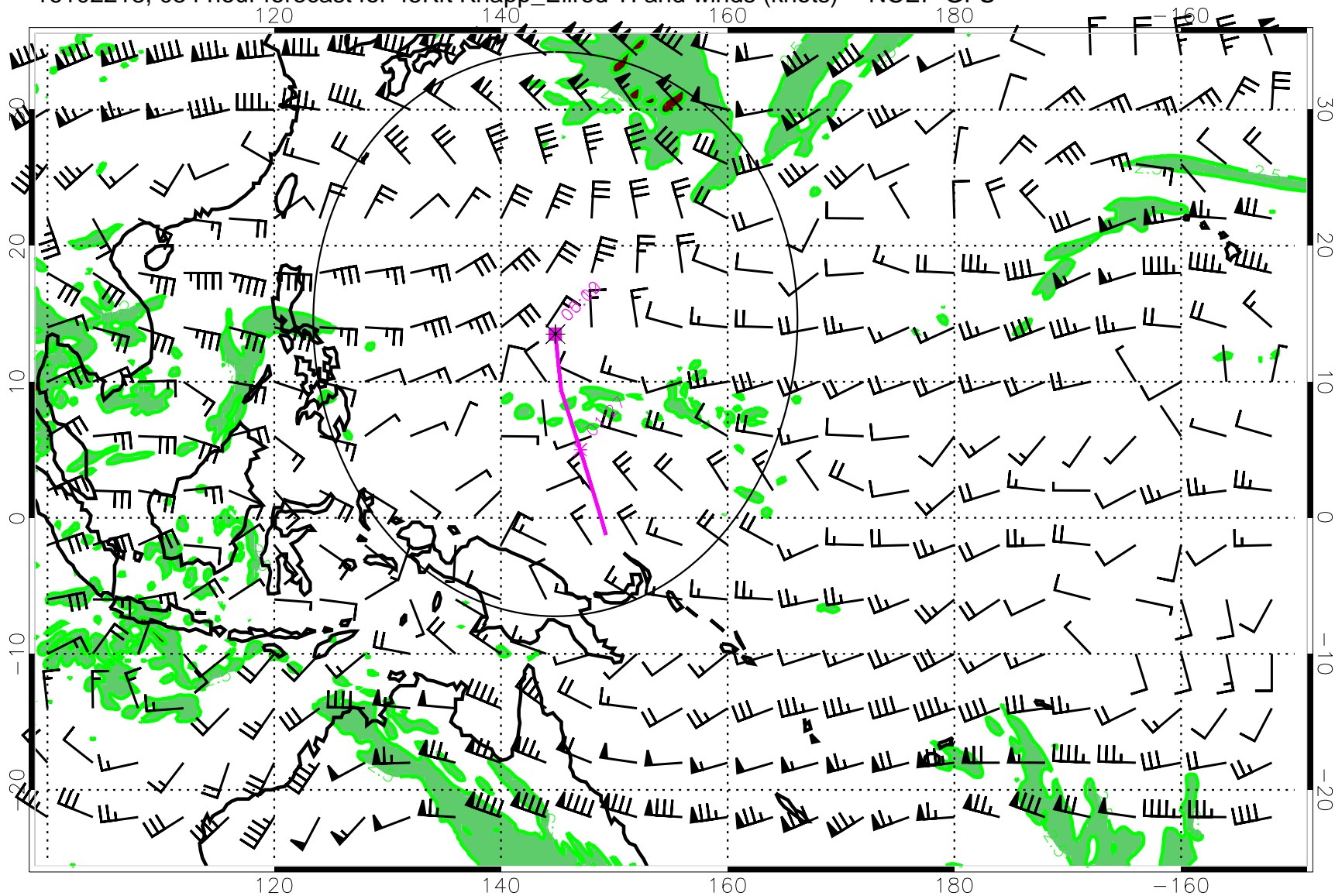
Turb value = 7 Turb value = 2.5

16102212, 048 hour forecast for 45Kft Knapp_Ellrod TI and winds (knots) -- NCEP GFS



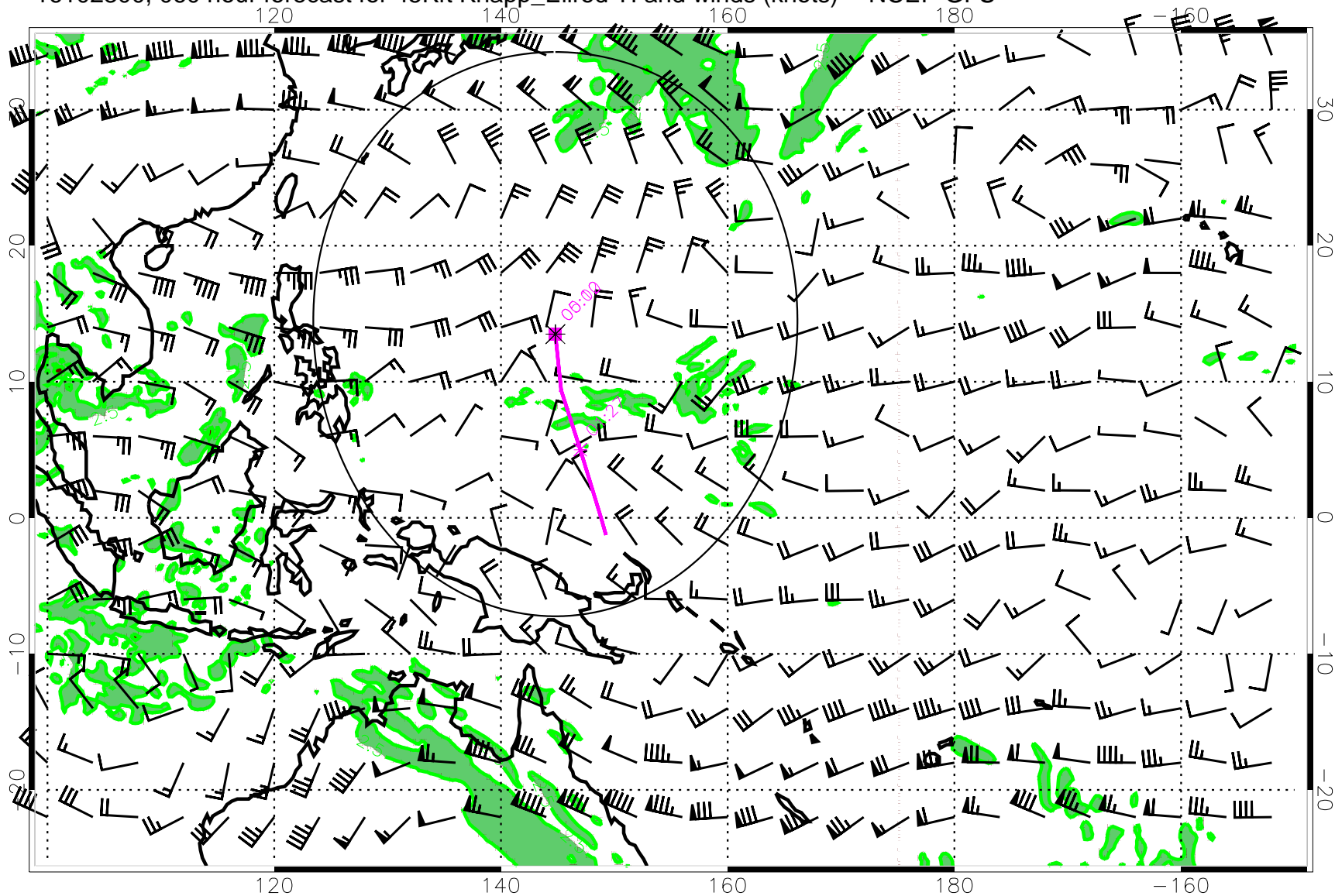
Turb value = 7 Turb value = 2.5

16102218, 054 hour forecast for 45Kft Knapp_Ellrod TI and winds (knots) -- NCEP GFS



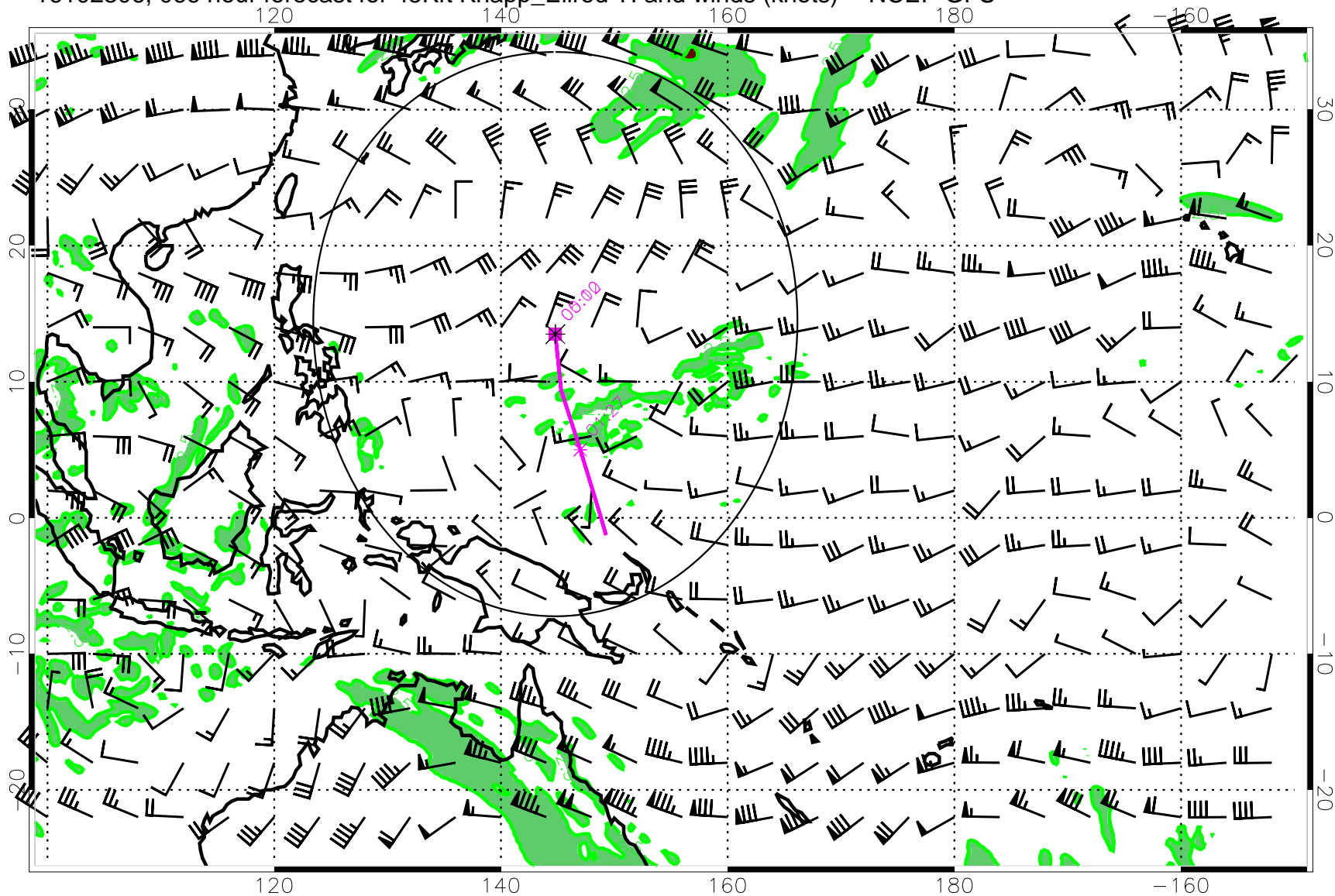
Turb value = 7 Turb value = 2.5

16102300, 060 hour forecast for 45Kft Knapp_Ellrod TI and winds (knots) -- NCEP GFS



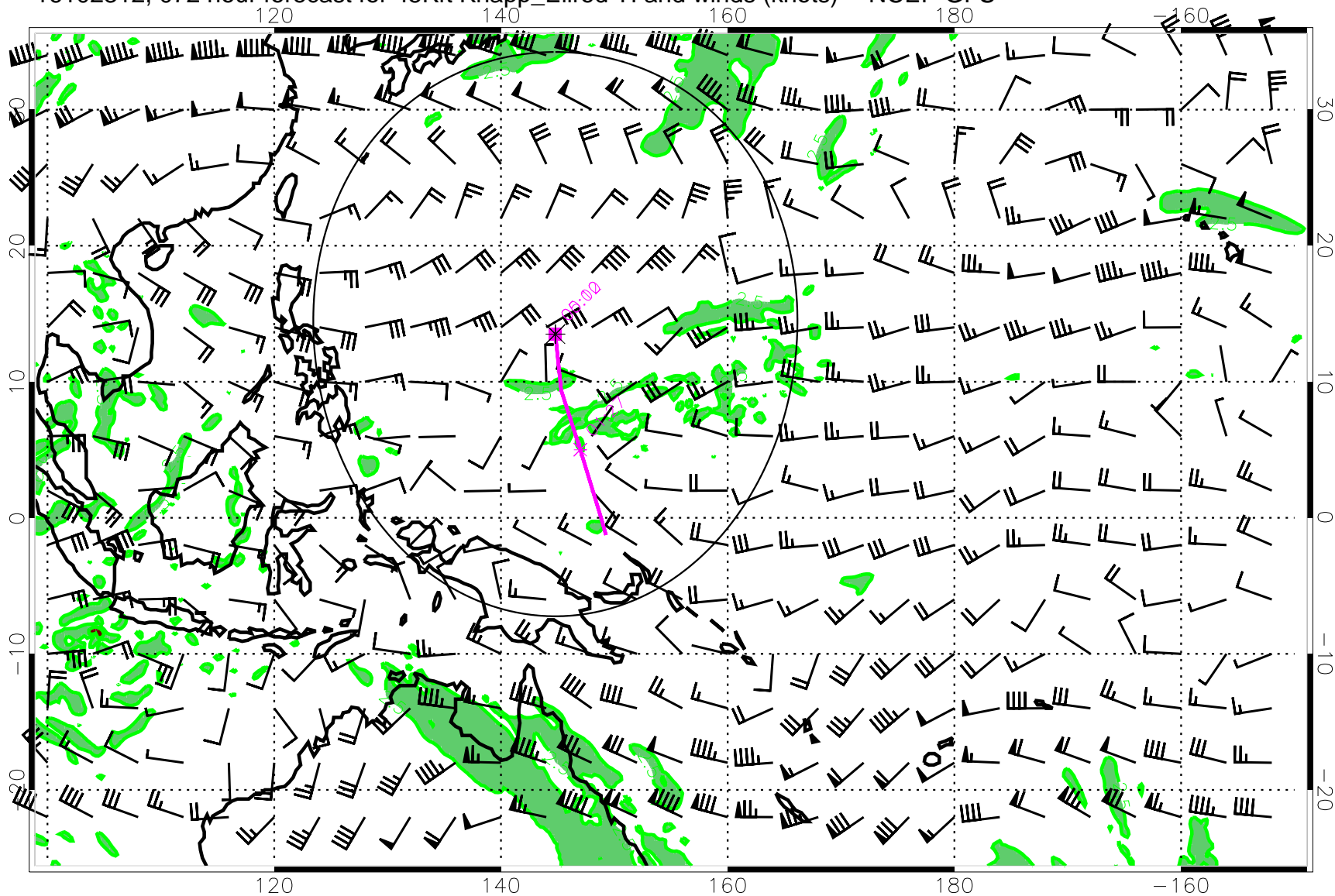
Turb value = 7 Turb value = 2.5

16102306, 066 hour forecast for 45Kft Knapp_Ellrod TI and winds (knots) -- NCEP GFS



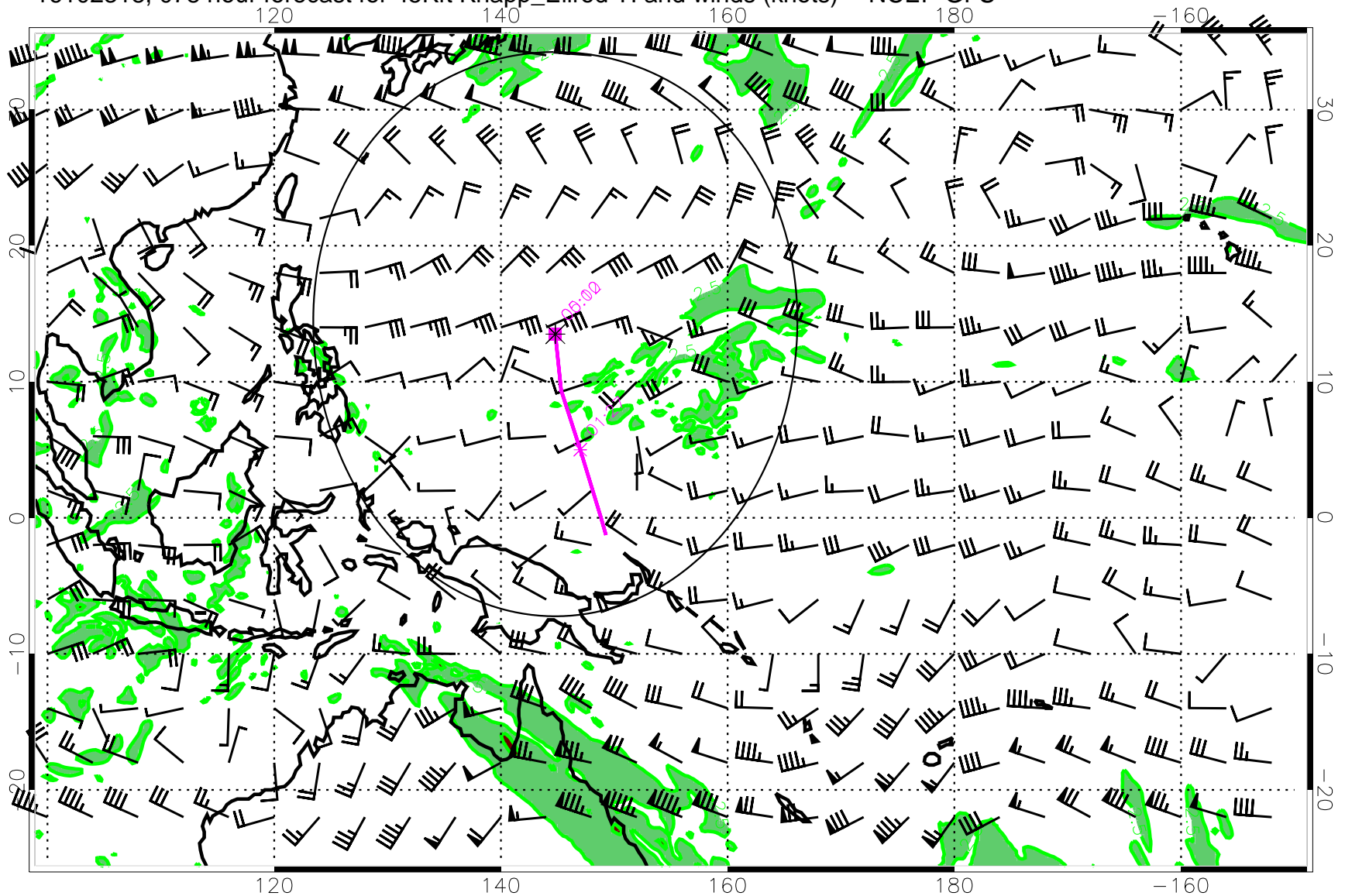
Turb value = 7 Turb value = 2.5

16102312, 072 hour forecast for 45Kft Knapp_Ellrod TI and winds (knots) -- NCEP GFS



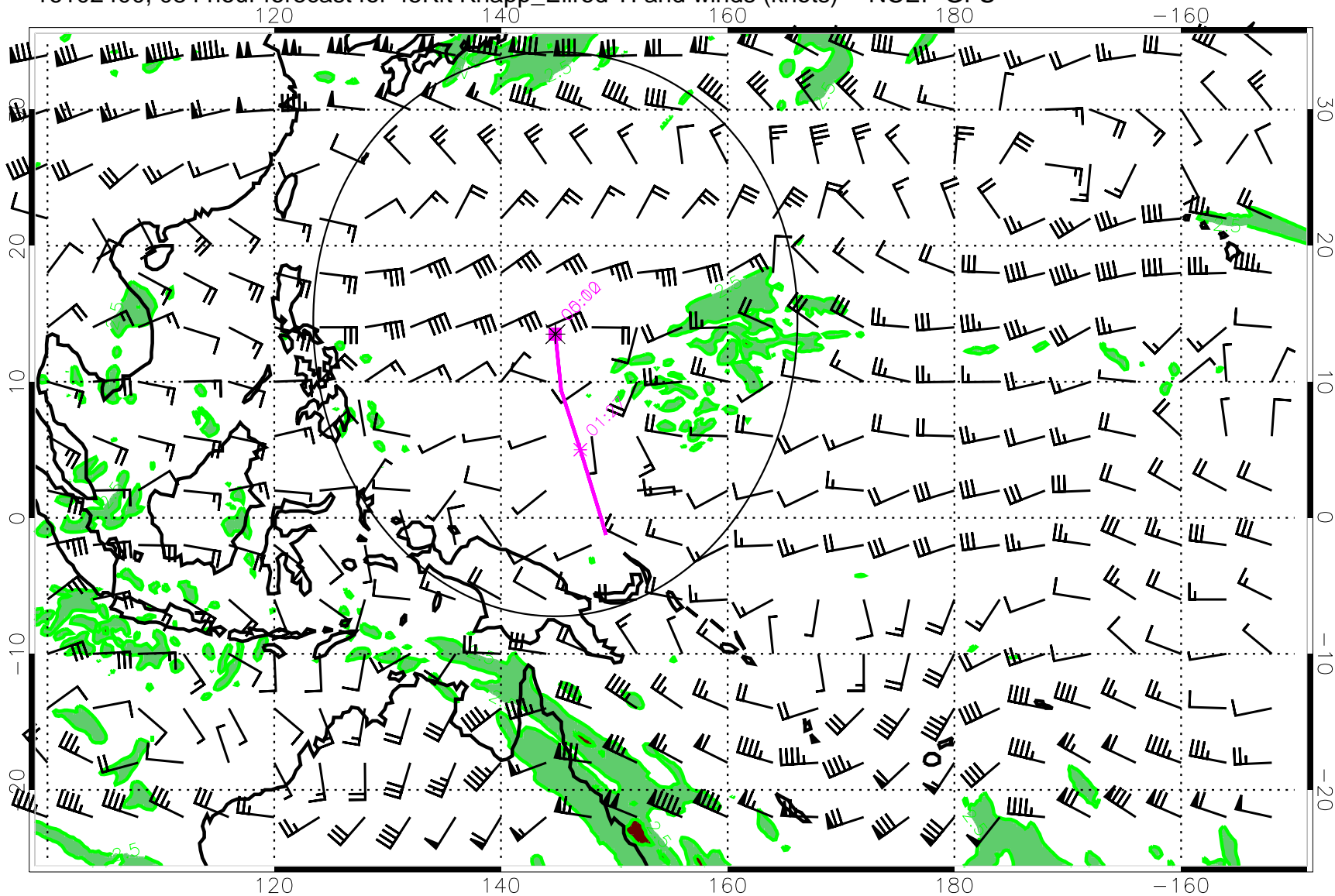
Turb value = 7 Turb value = 2.5

16102318, 078 hour forecast for 45Kft Knapp_Ellrod TI and winds (knots) -- NCEP GFS



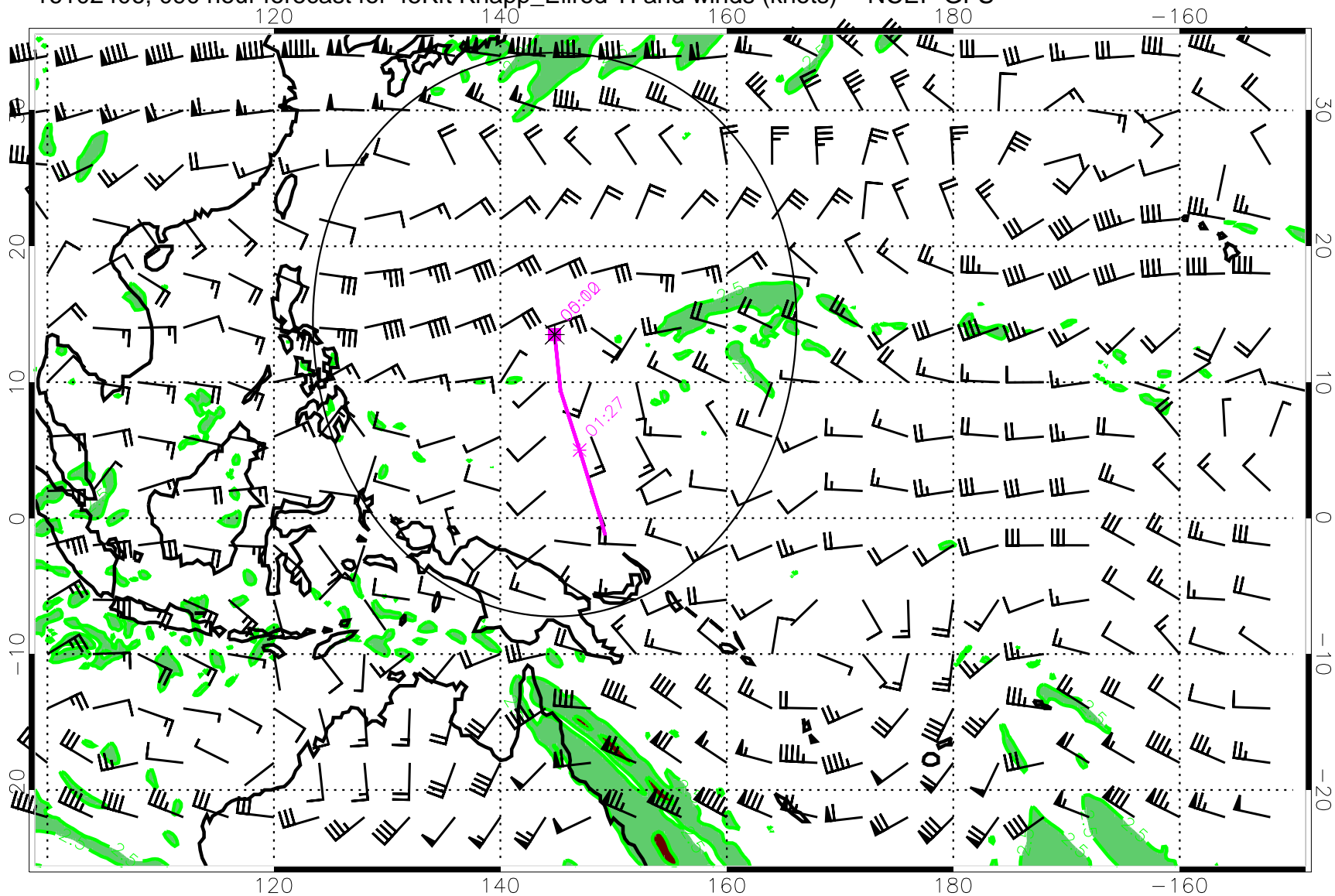
Turb value = 7 Turb value = 2.5

16102400, 084 hour forecast for 45Kft Knapp_Ellrod TI and winds (knots) -- NCEP GFS



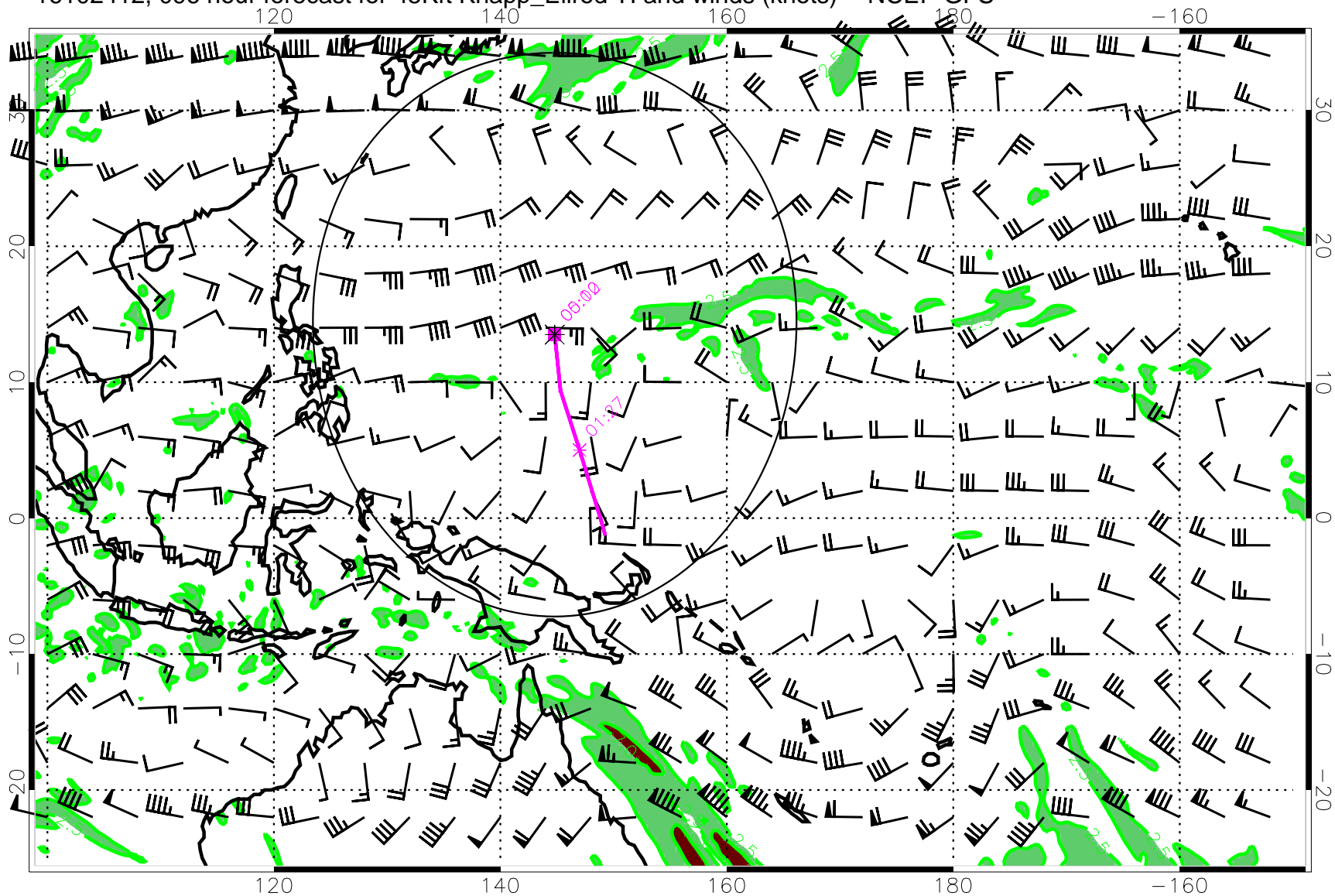
Turb value = 7 Turb value = 2.5

16102406, 090 hour forecast for 45Kft Knapp_Ellrod TI and winds (knots) -- NCEP GFS



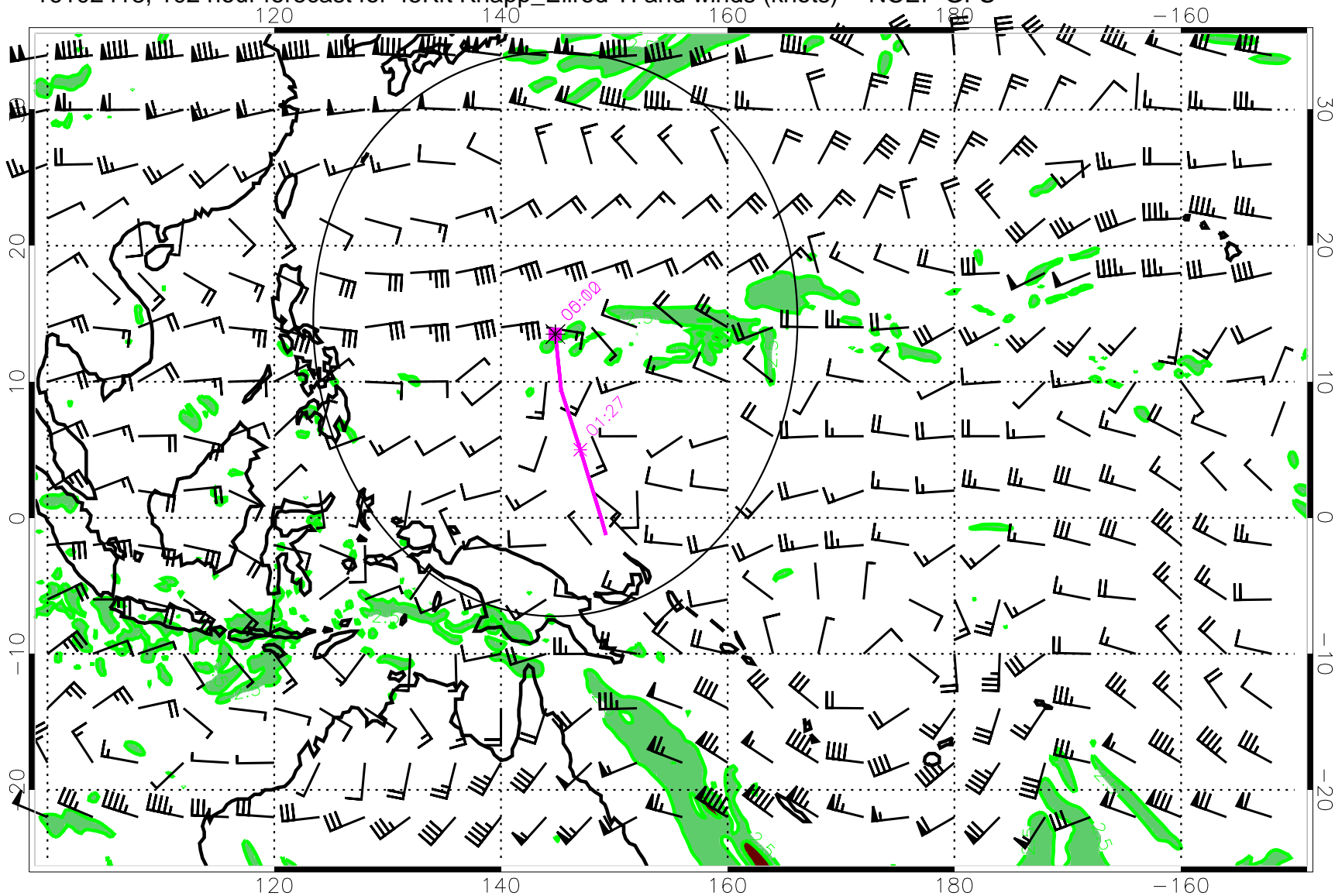
Turb value = 7 Turb value = 2.5

16102412, 096 hour forecast for 45Kft Knapp_Ellrod TI and winds (knots) -- NCEP GFS



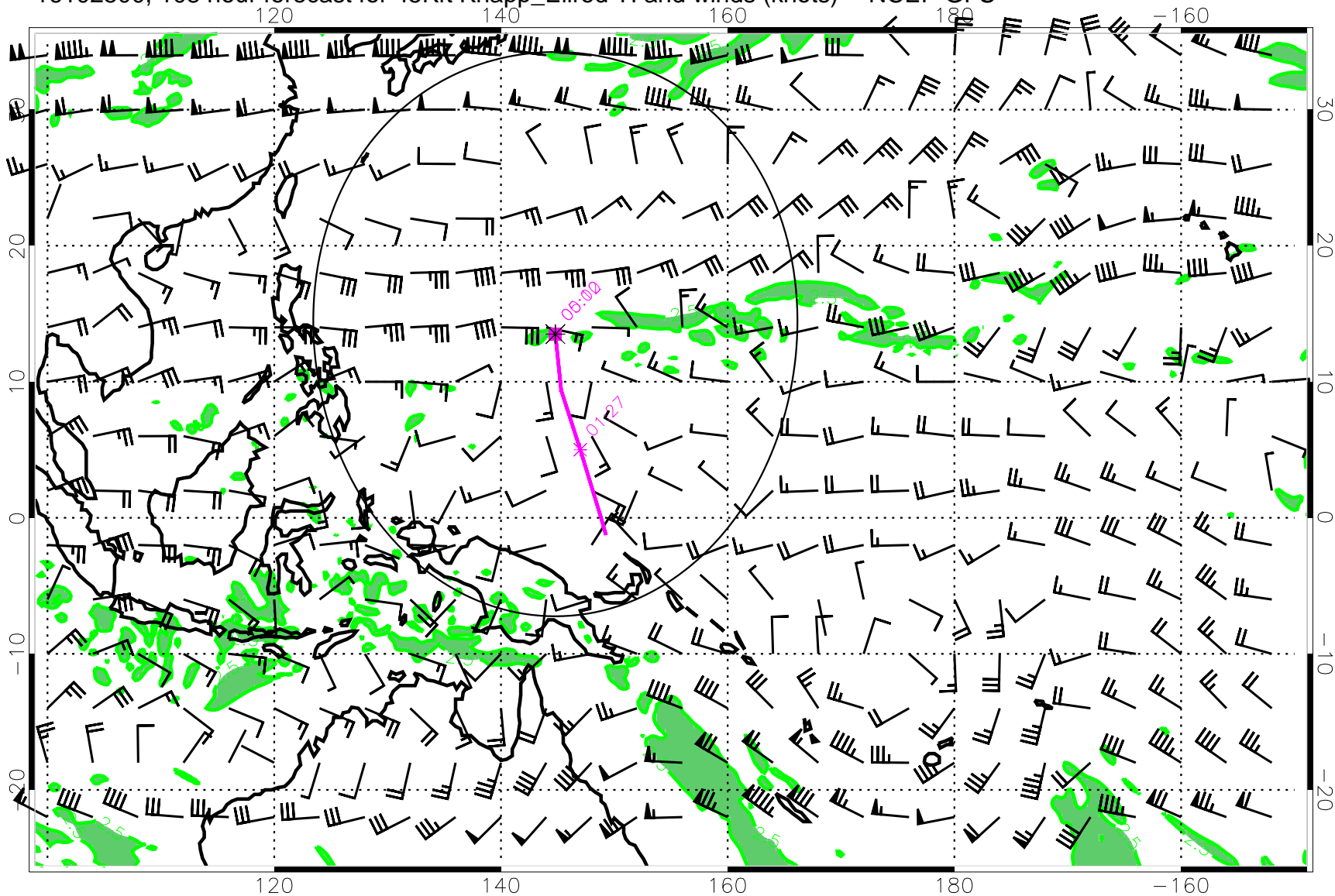
Turb value = 7 Turb value = 2.5

16102418, 102 hour forecast for 45Kft Knapp_Ellrod TI and winds (knots) -- NCEP GFS



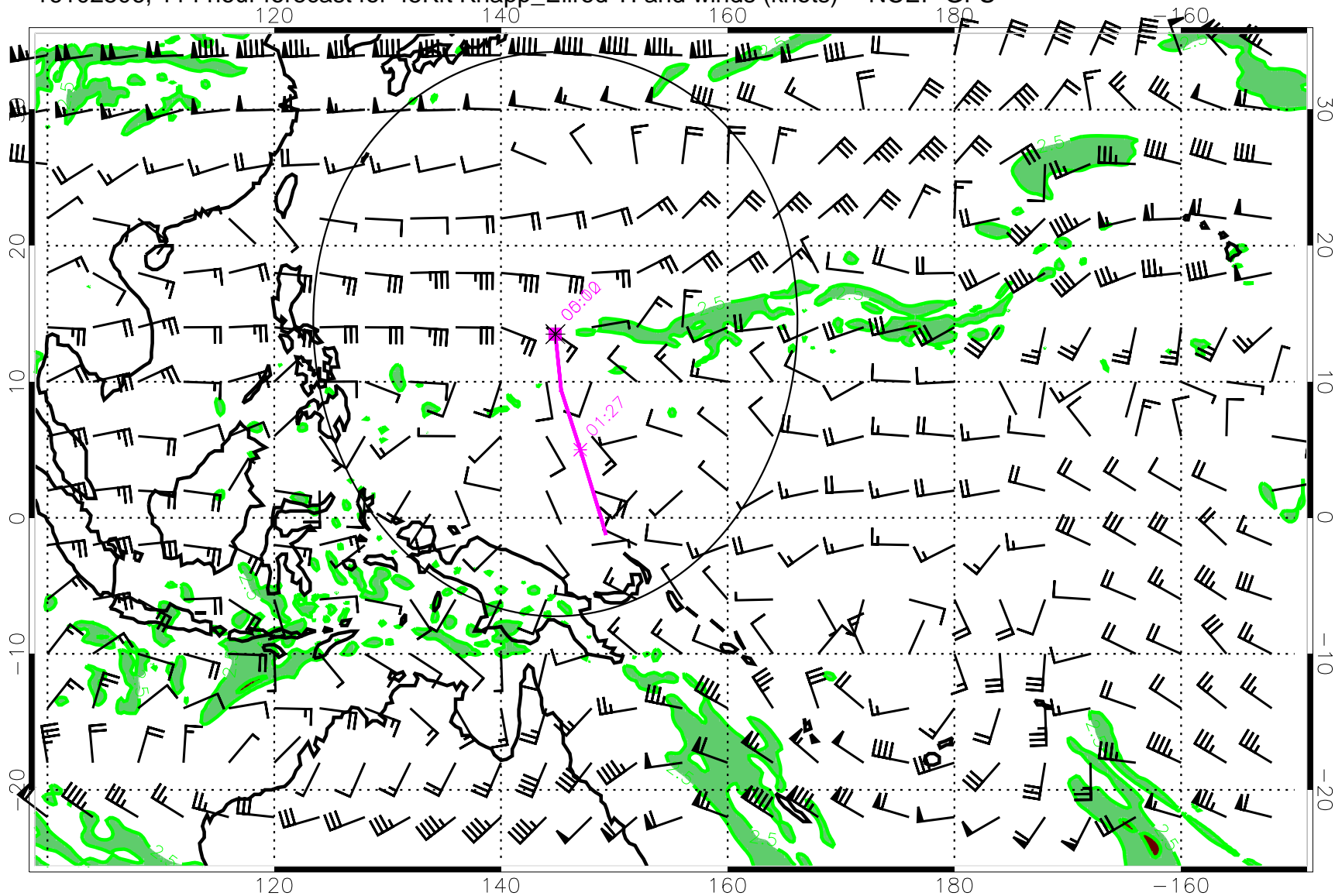
Turb value = 7 Turb value = 2.5

16102500, 108 hour forecast for 45Kft Knapp_Ellrod TI and winds (knots) -- NCEP GFS



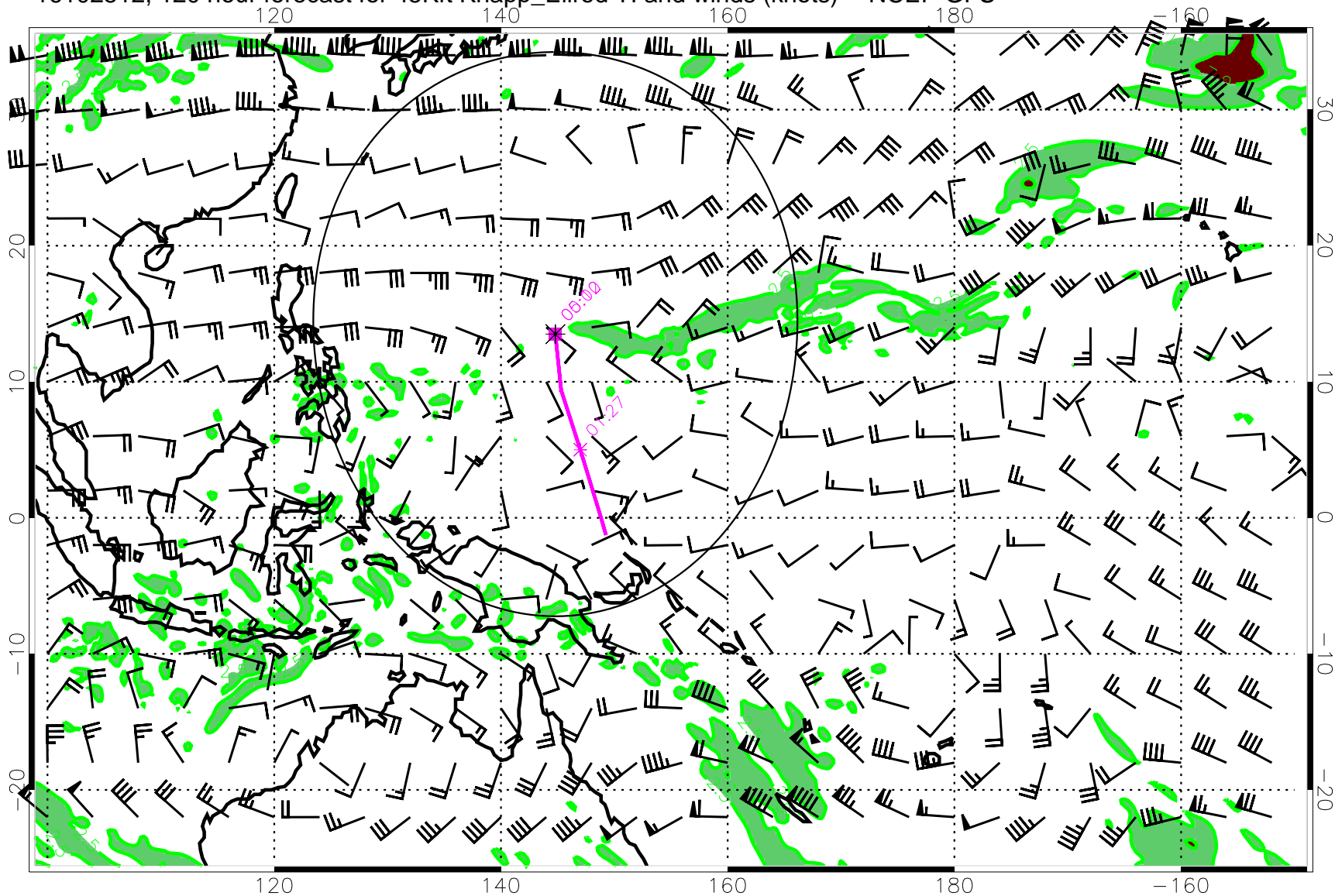
Turb value = 7 Turb value = 2.5

16102506, 114 hour forecast for 45Kft Knapp_Ellrod TI and winds (knots) -- NCEP GFS



Turb value = 7 Turb value = 2.5

16102512, 120 hour forecast for 45Kft Knapp_Ellrod TI and winds (knots) -- NCEP GFS



Turb value = 7 Turb value = 2.5