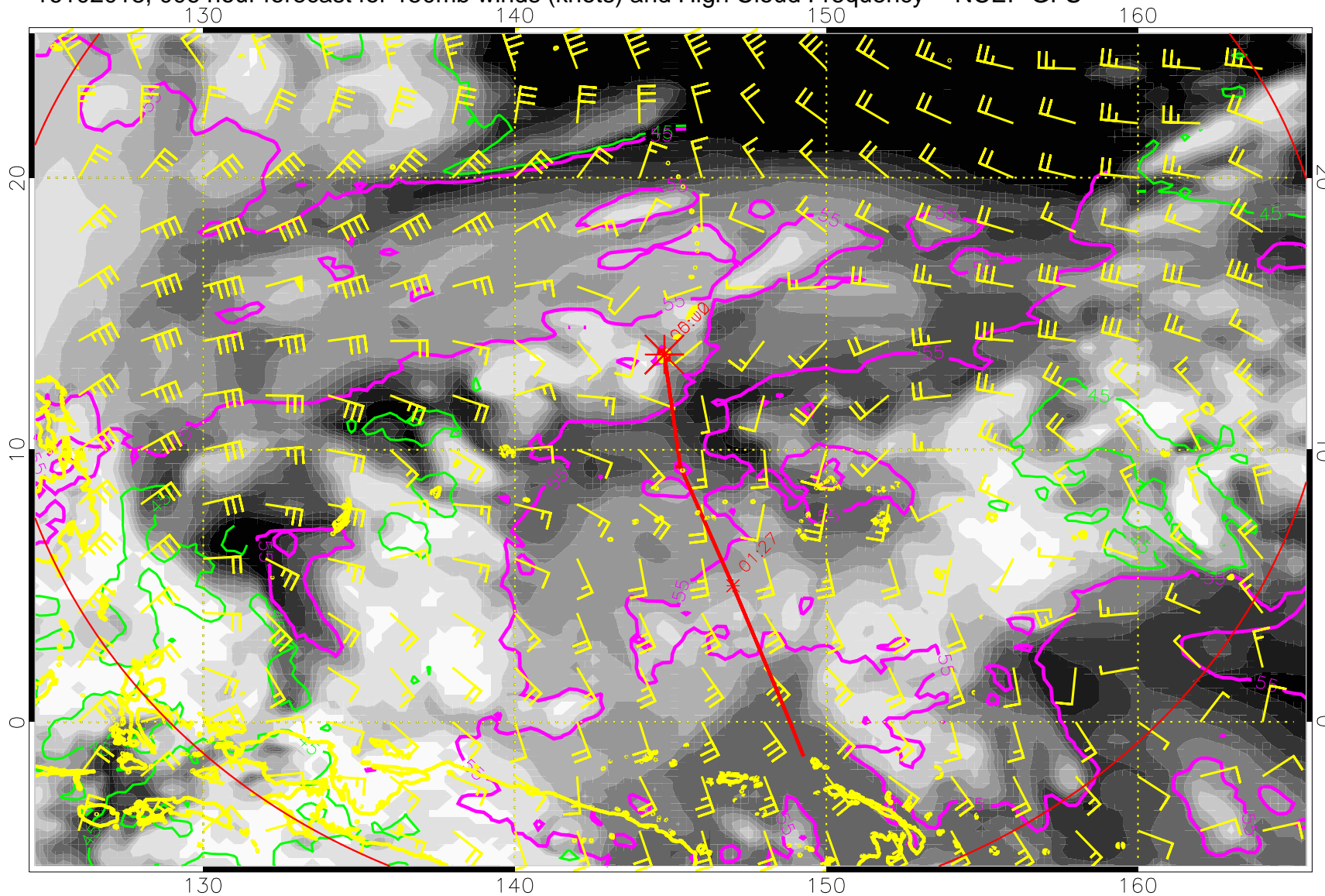
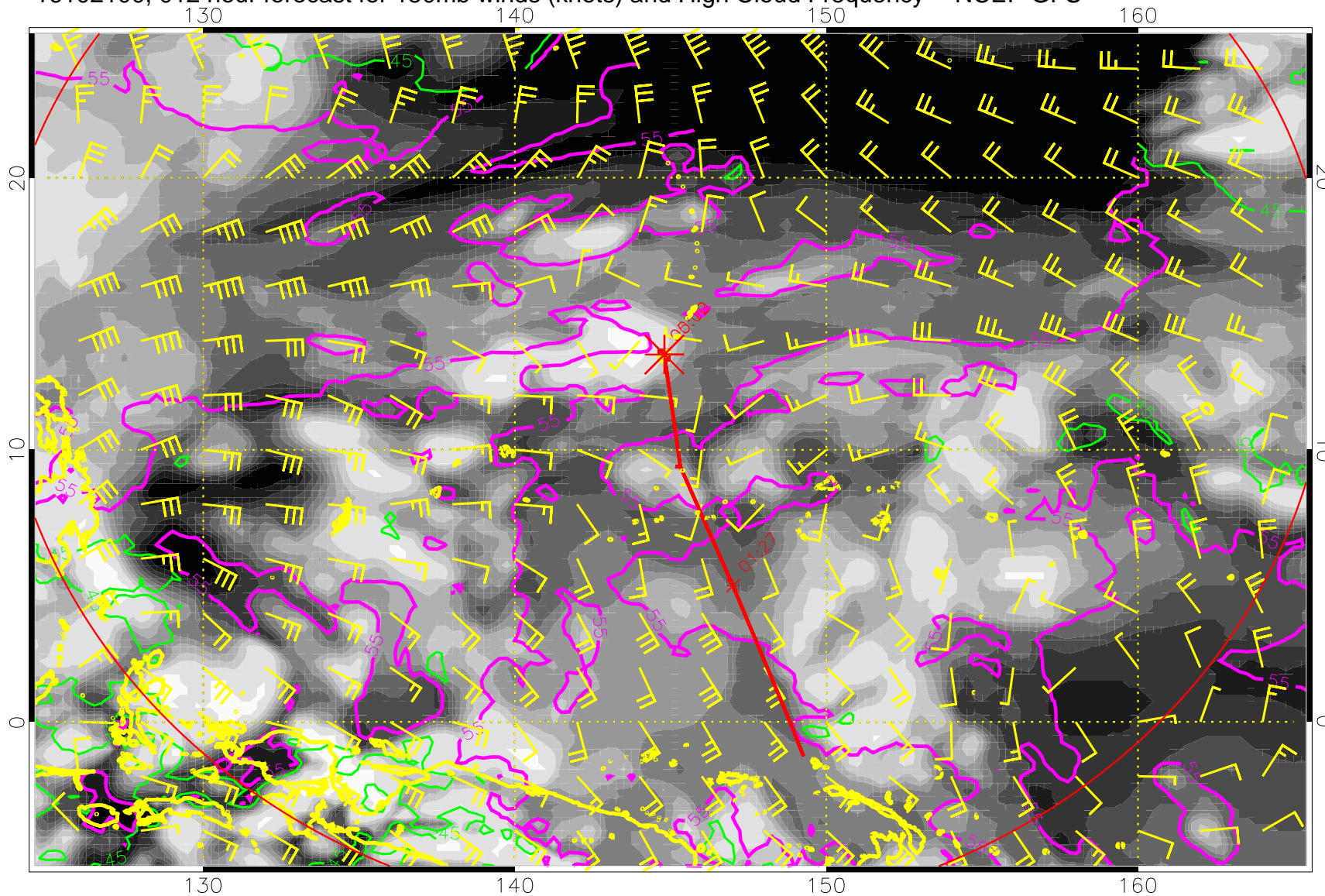


16102018, 006 hour forecast for 150mb winds (knots) and High Cloud Frequency -- NCEP GFS



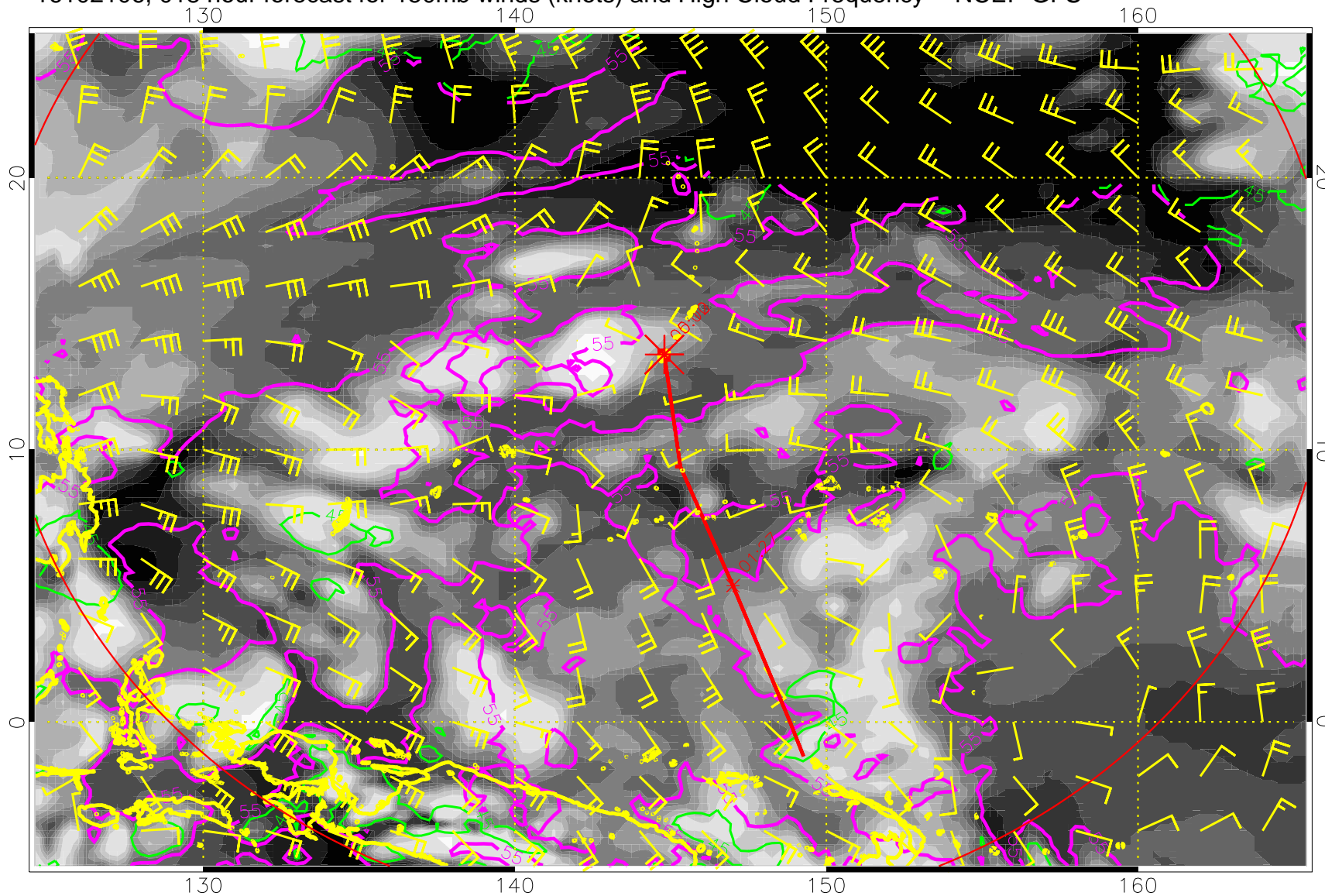
55 kft 45 kft

16102100, 012 hour forecast for 150mb winds (knots) and High Cloud Frequency -- NCEP GFS



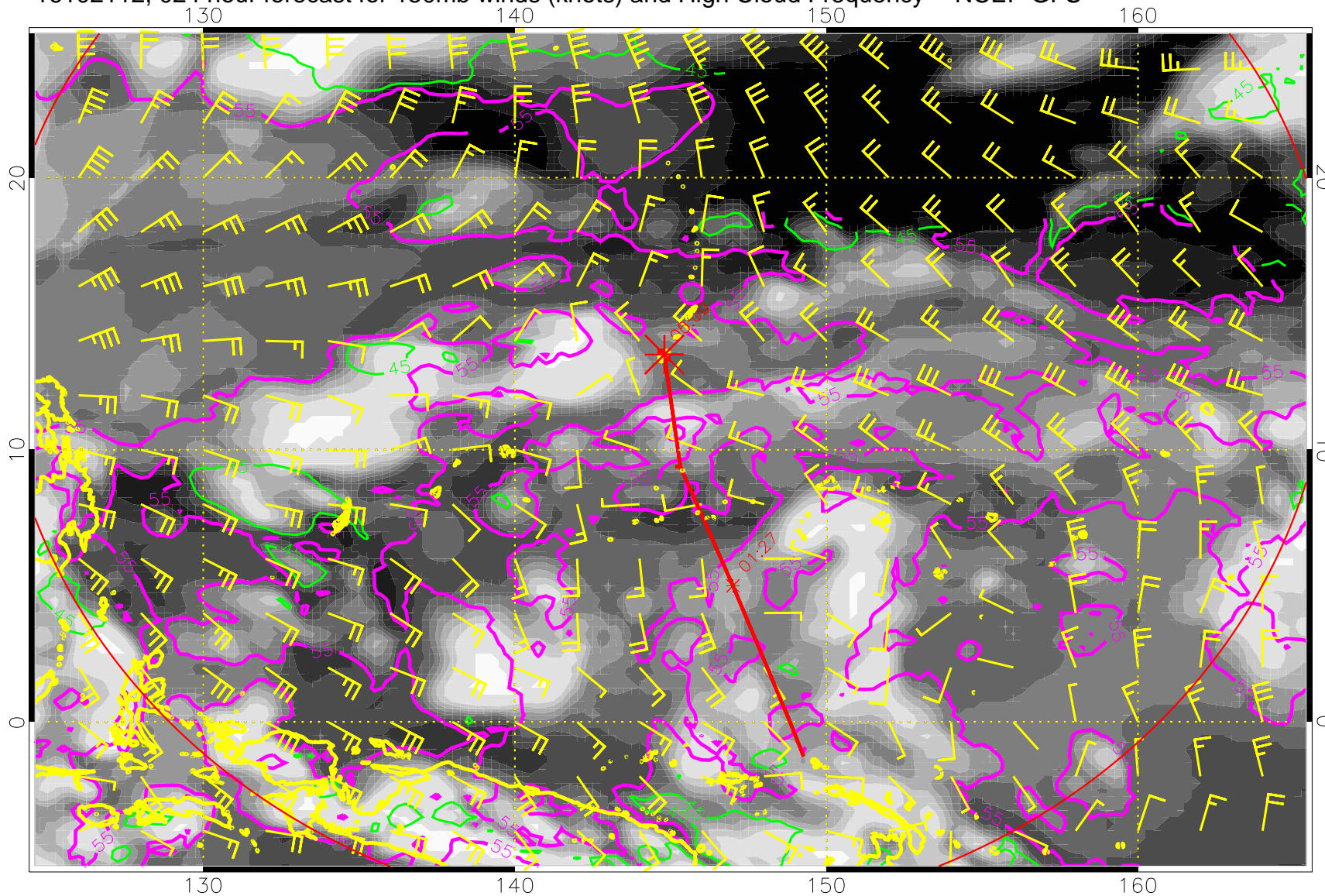
55 kft
45 kft

16102106, 018 hour forecast for 150mb winds (knots) and High Cloud Frequency -- NCEP GFS



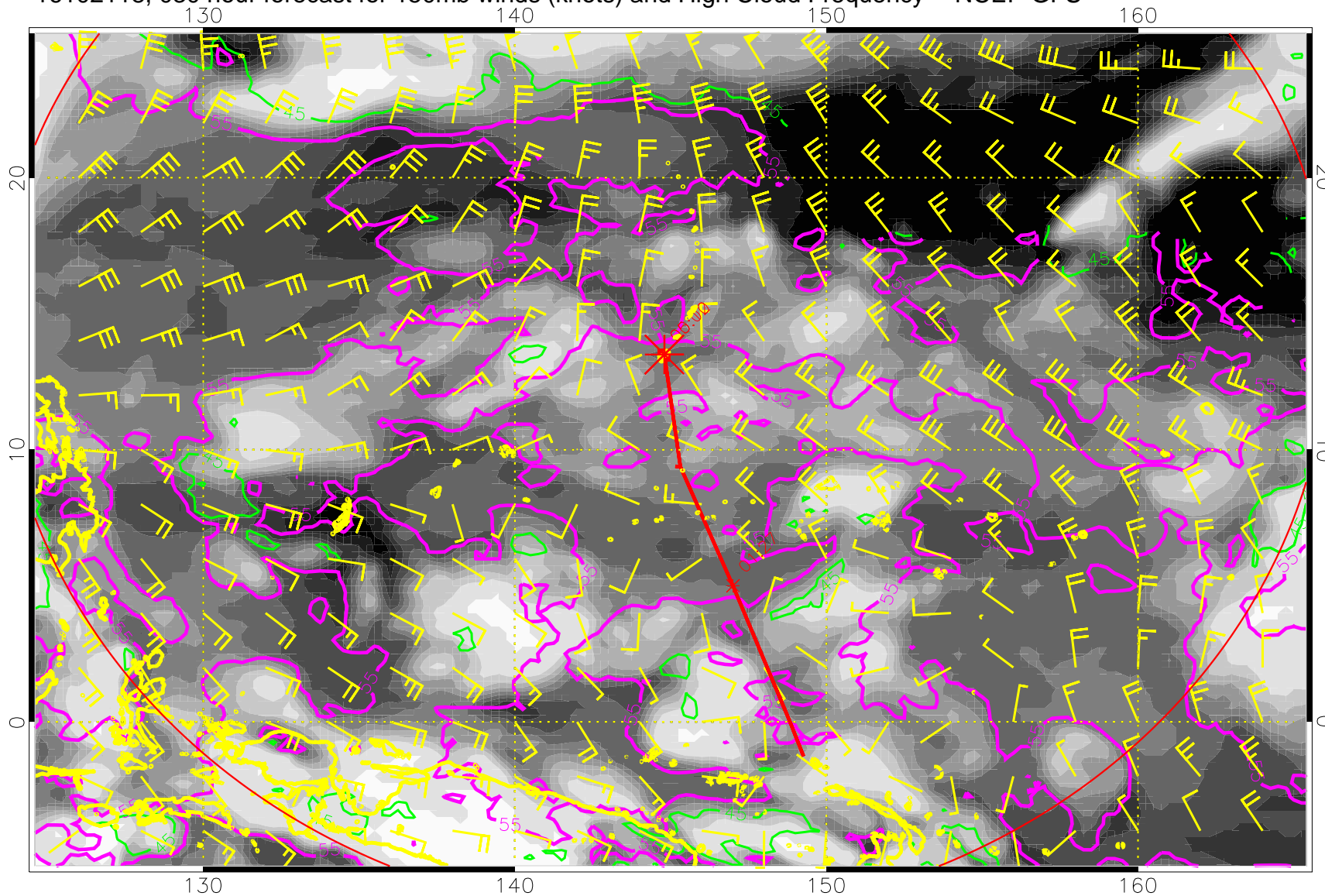
55 kft 45 kft

16102112, 024 hour forecast for 150mb winds (knots) and High Cloud Frequency -- NCEP GFS



55 kft 45 kft

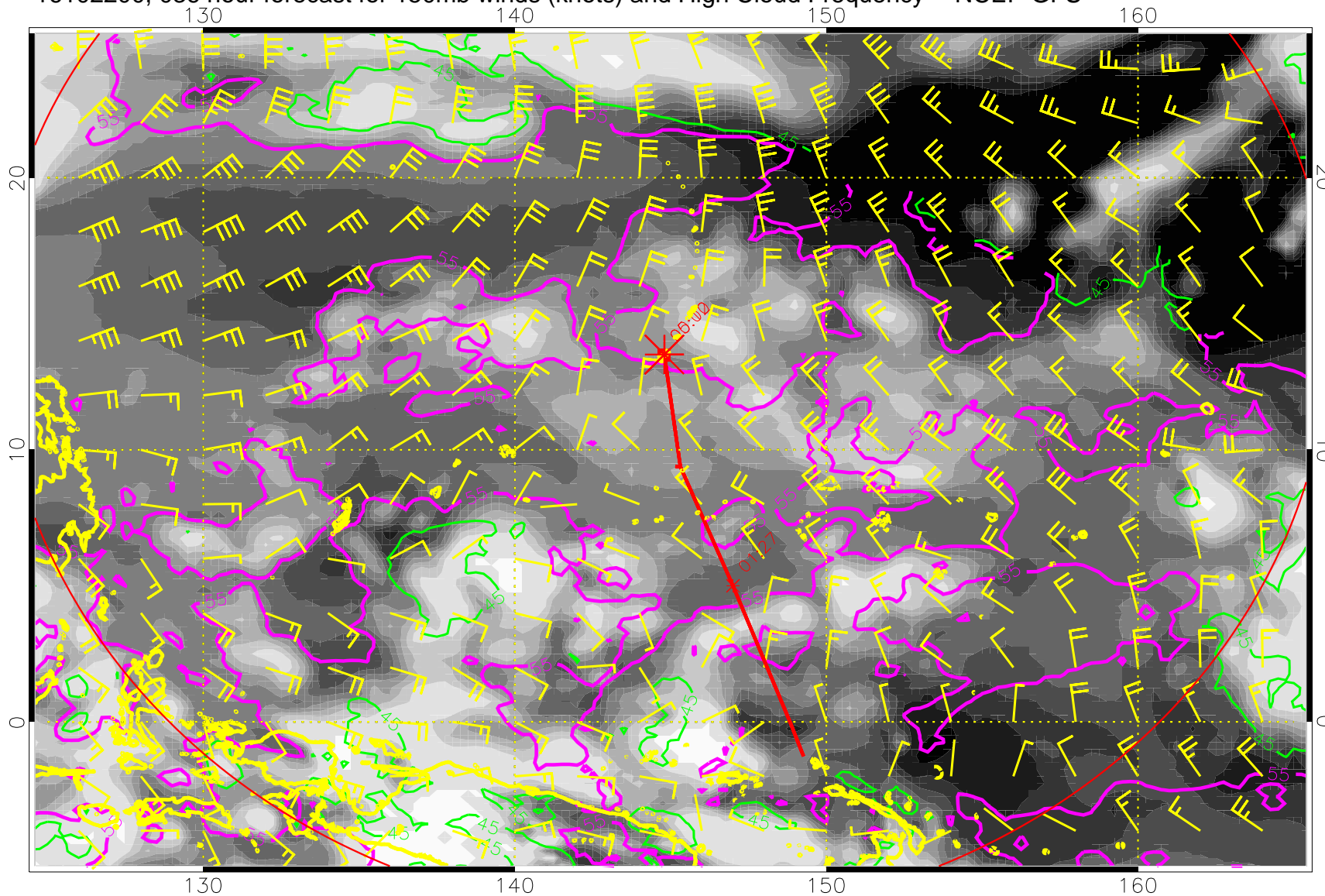
16102118, 030 hour forecast for 150mb winds (knots) and High Cloud Frequency -- NCEP GFS



0.0 0.2 0.4 0.6 0.8 1.0
High Cloud Frequency

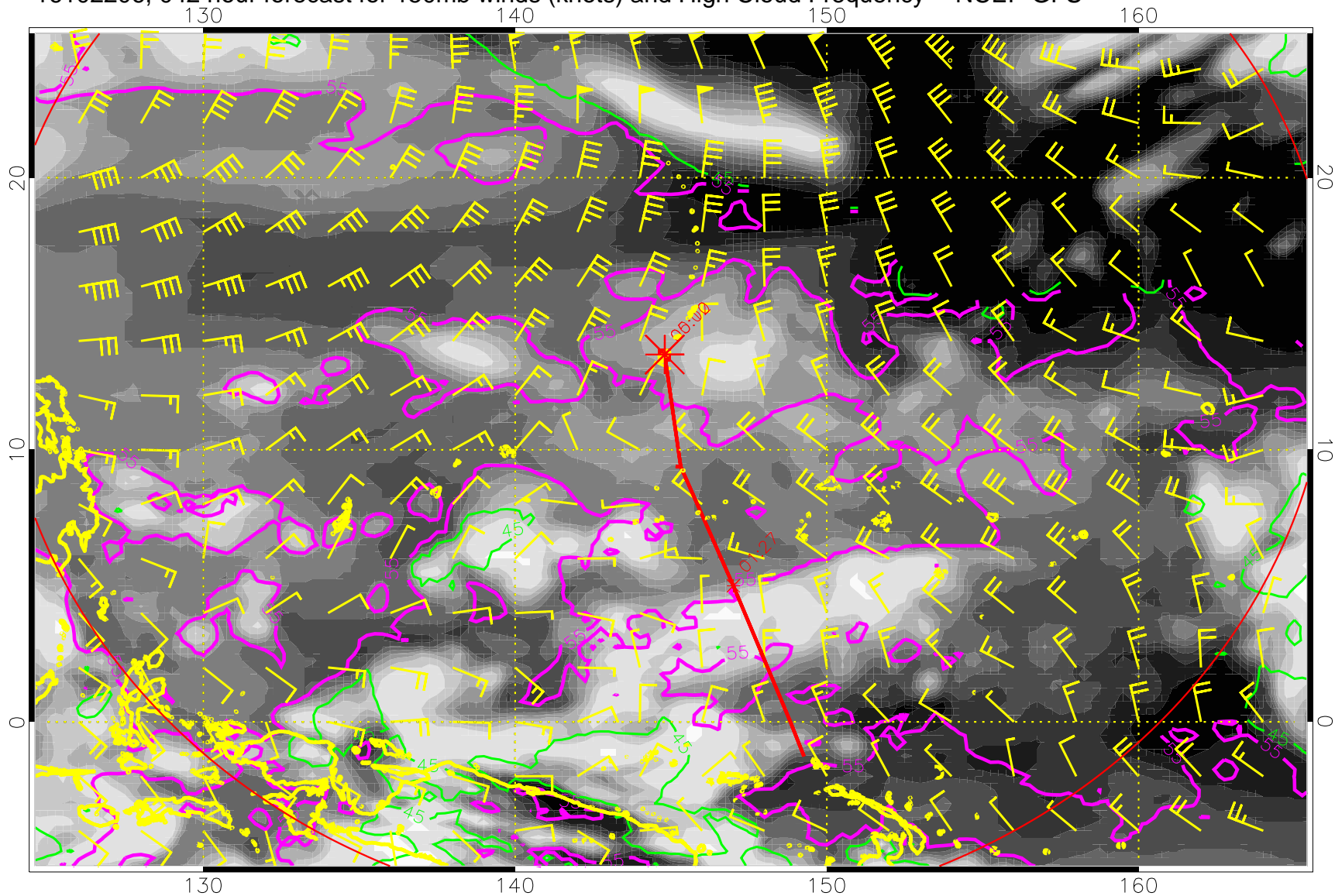
55 kft 45 kft

16102200, 036 hour forecast for 150mb winds (knots) and High Cloud Frequency -- NCEP GFS



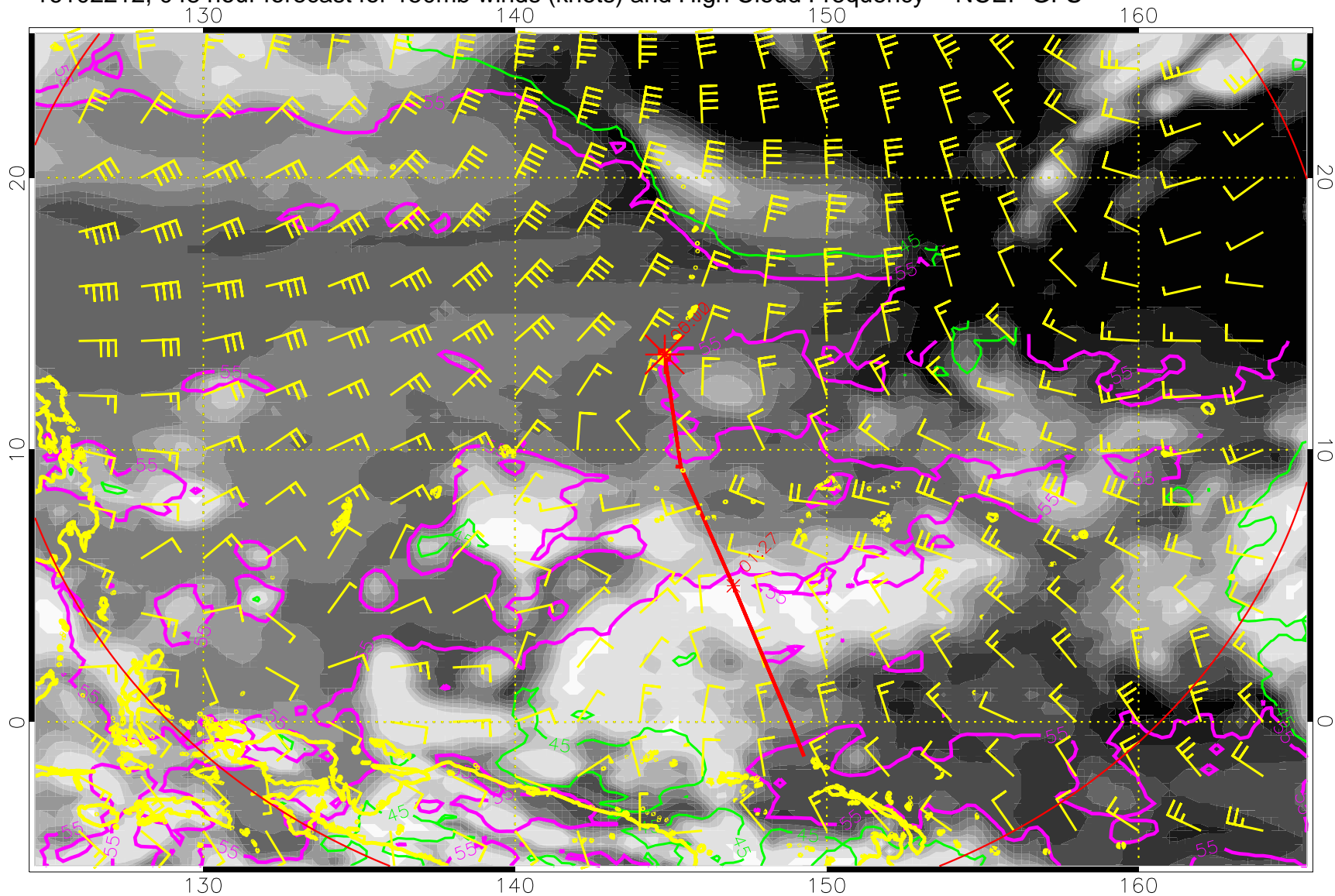
55 kft
45 kft

16102206, 042 hour forecast for 150mb winds (knots) and High Cloud Frequency -- NCEP GFS



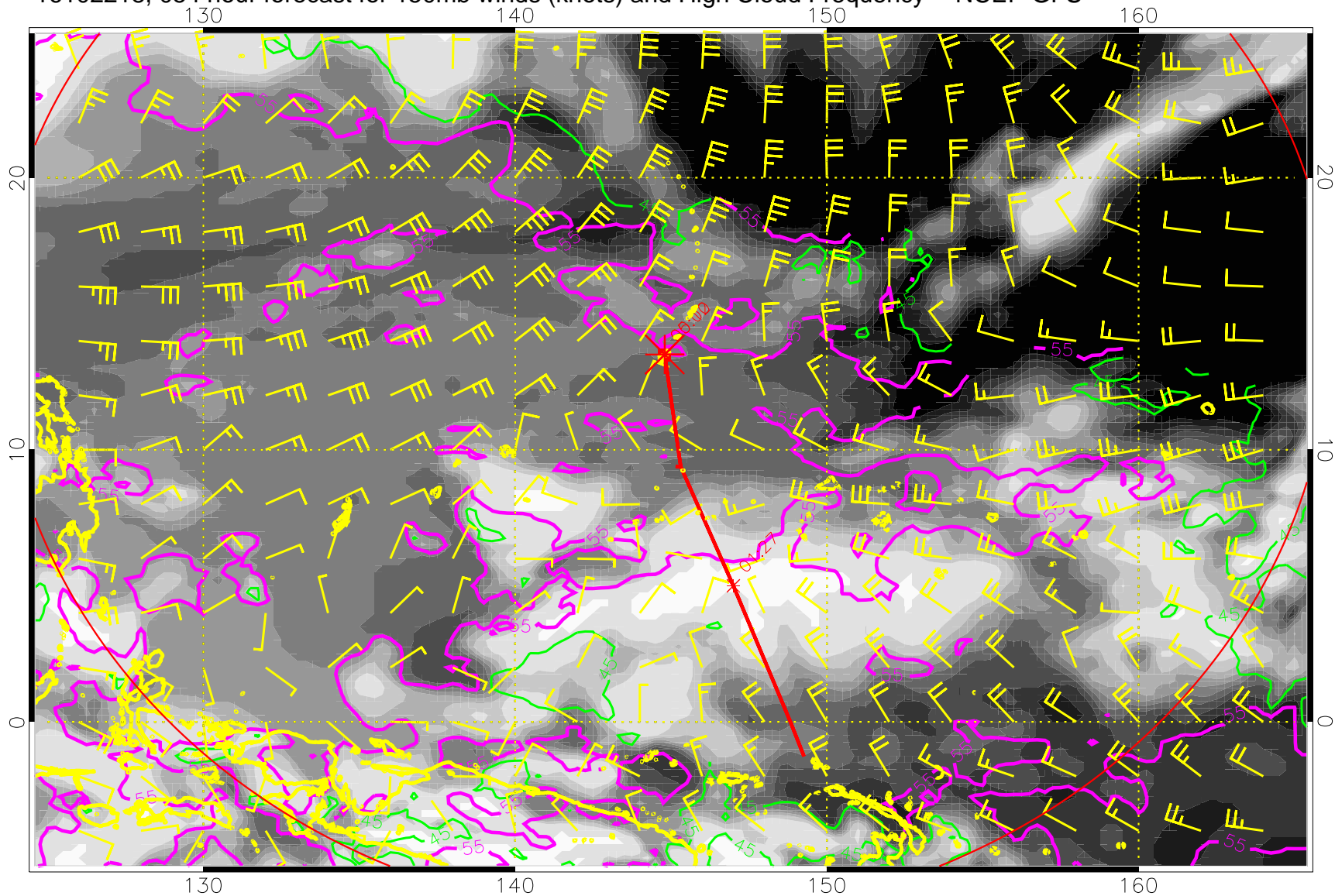
55 kft 45 kft

16102212, 048 hour forecast for 150mb winds (knots) and High Cloud Frequency -- NCEP GFS



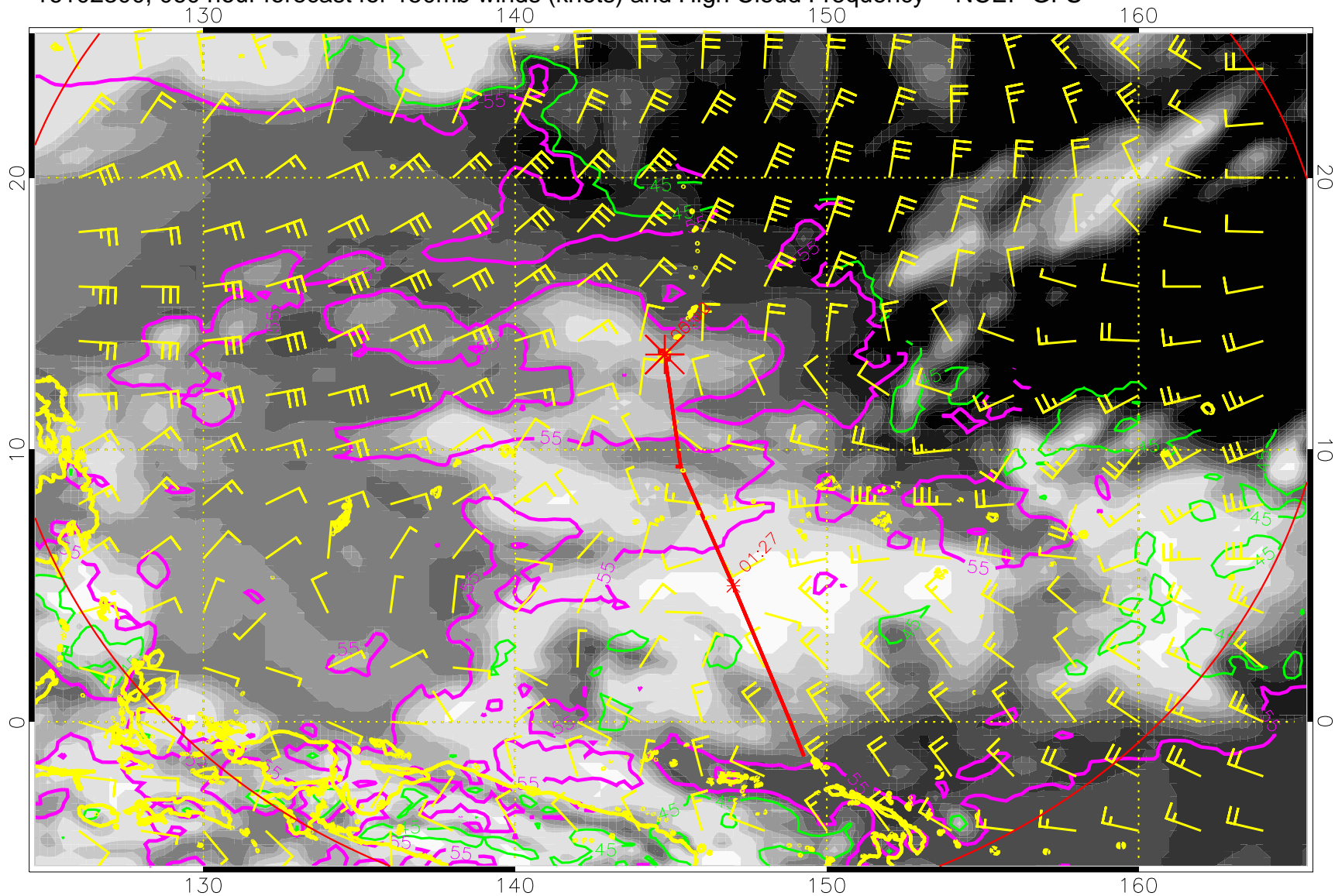
55 kft 45 kft

16102218, 054 hour forecast for 150mb winds (knots) and High Cloud Frequency -- NCEP GFS



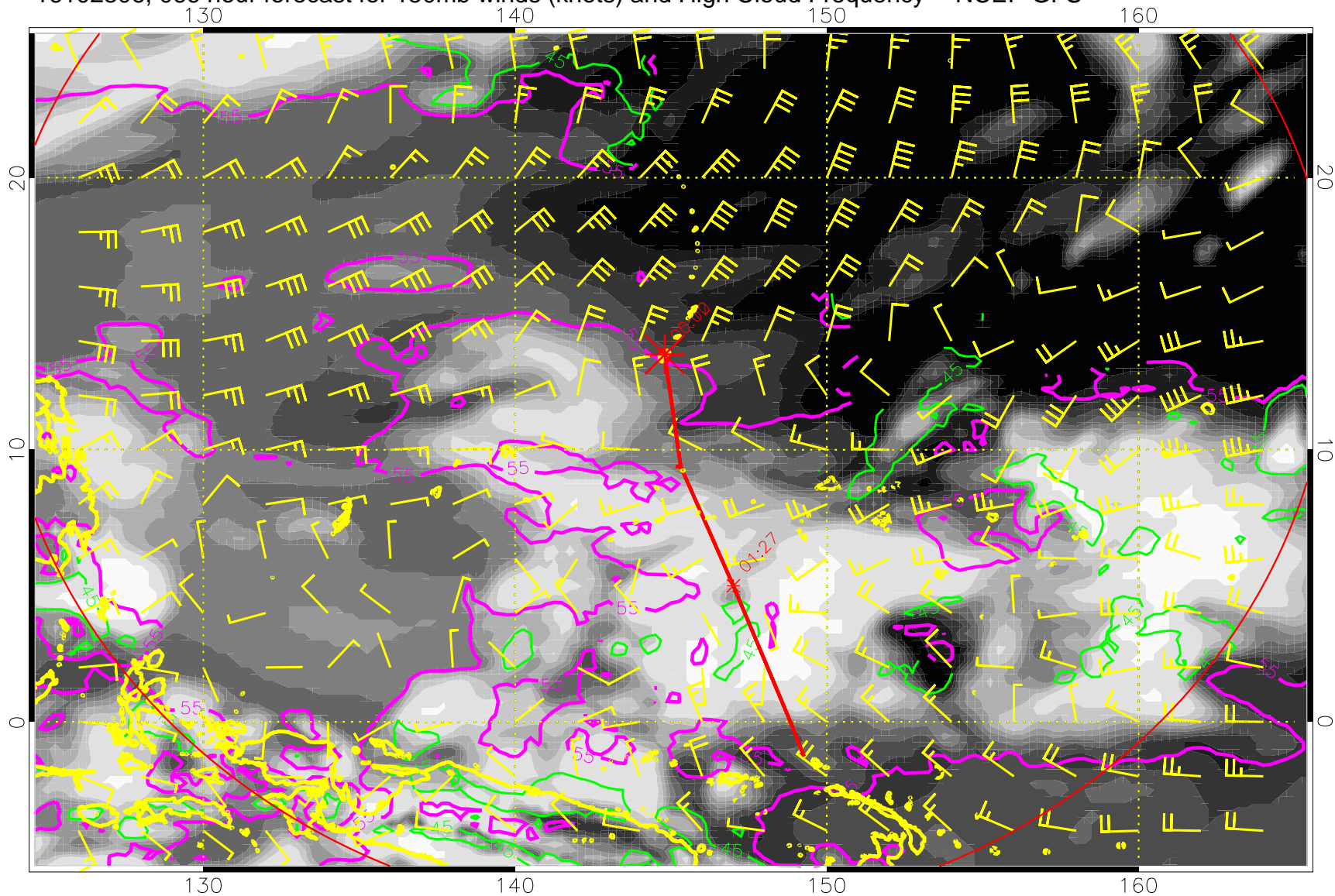
55 kft 45 kft

16102300, 060 hour forecast for 150mb winds (knots) and High Cloud Frequency -- NCEP GFS



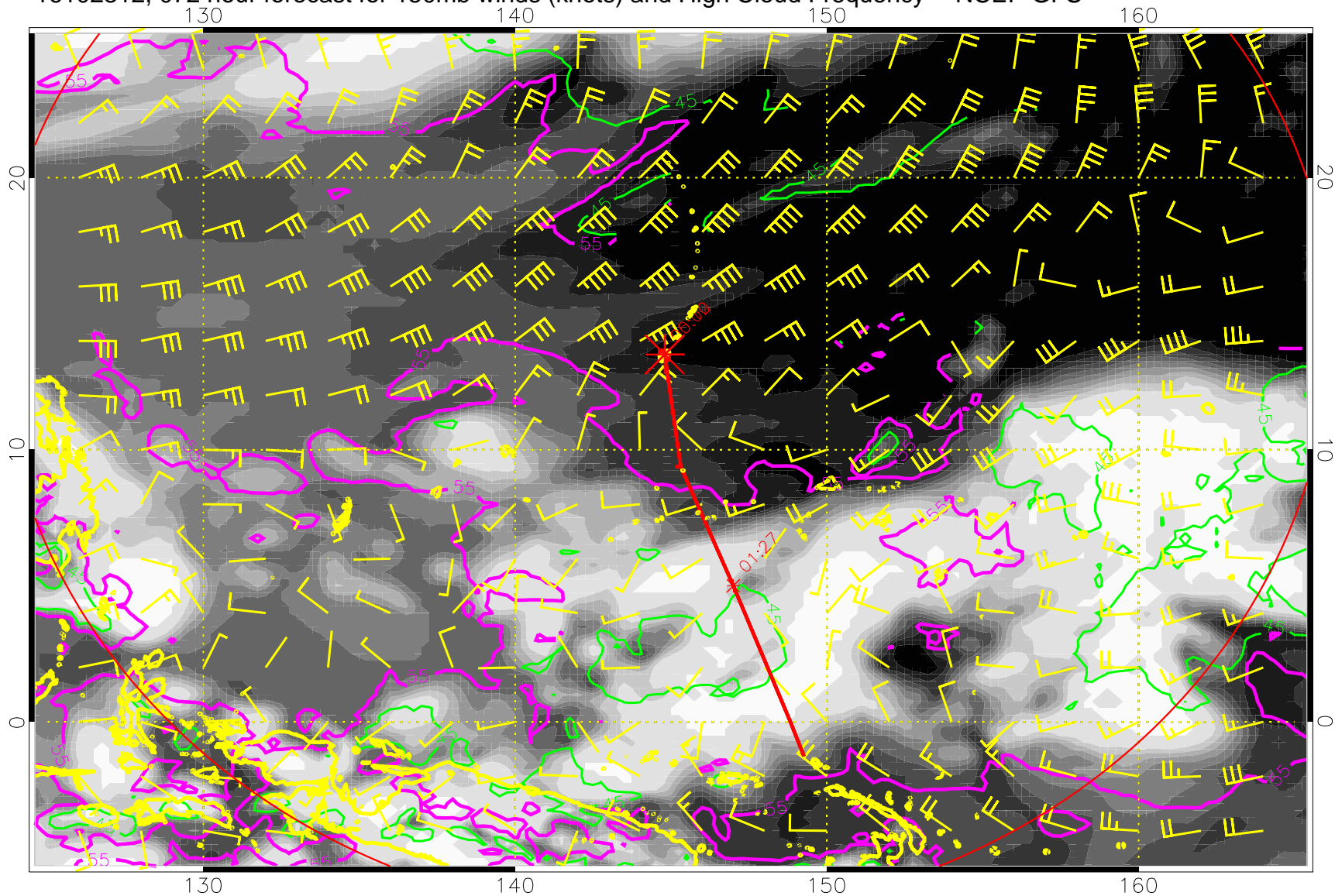
55 kft 45 kft

16102306, 066 hour forecast for 150mb winds (knots) and High Cloud Frequency -- NCEP GFS



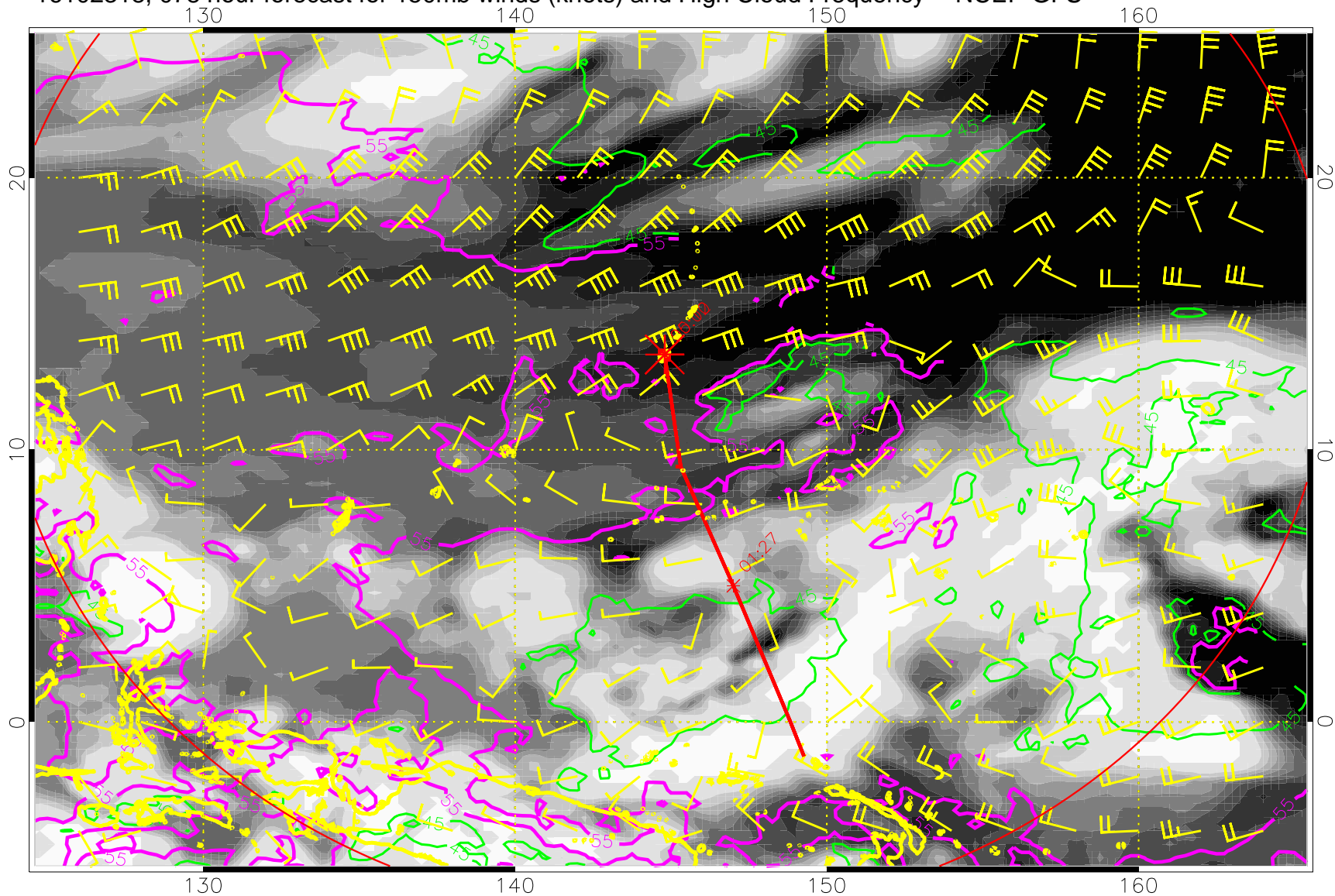
55 kft
45 kft

16102312, 072 hour forecast for 150mb winds (knots) and High Cloud Frequency -- NCEP GFS



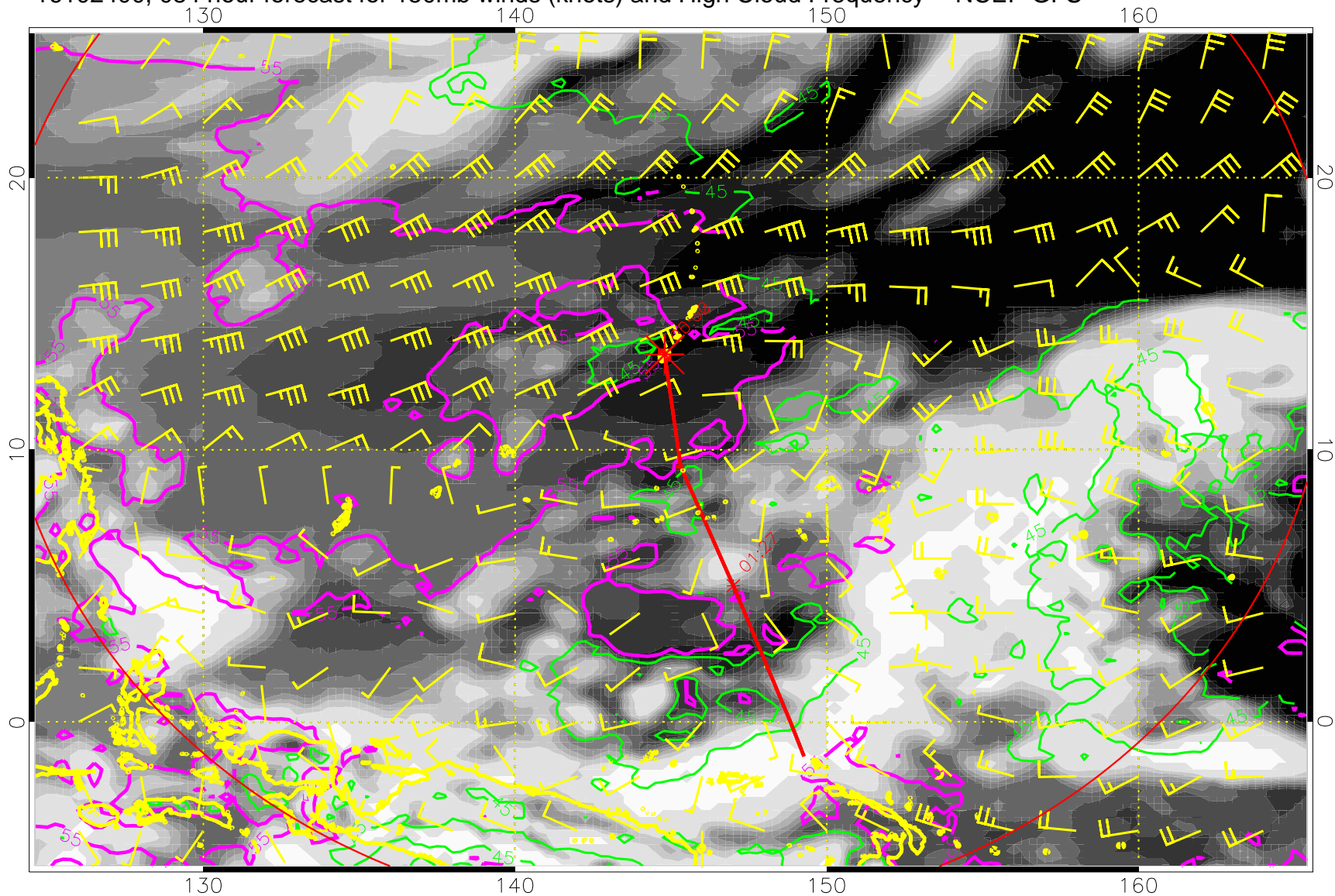
55 kft 45 kft

16102318, 078 hour forecast for 150mb winds (knots) and High Cloud Frequency -- NCEP GFS



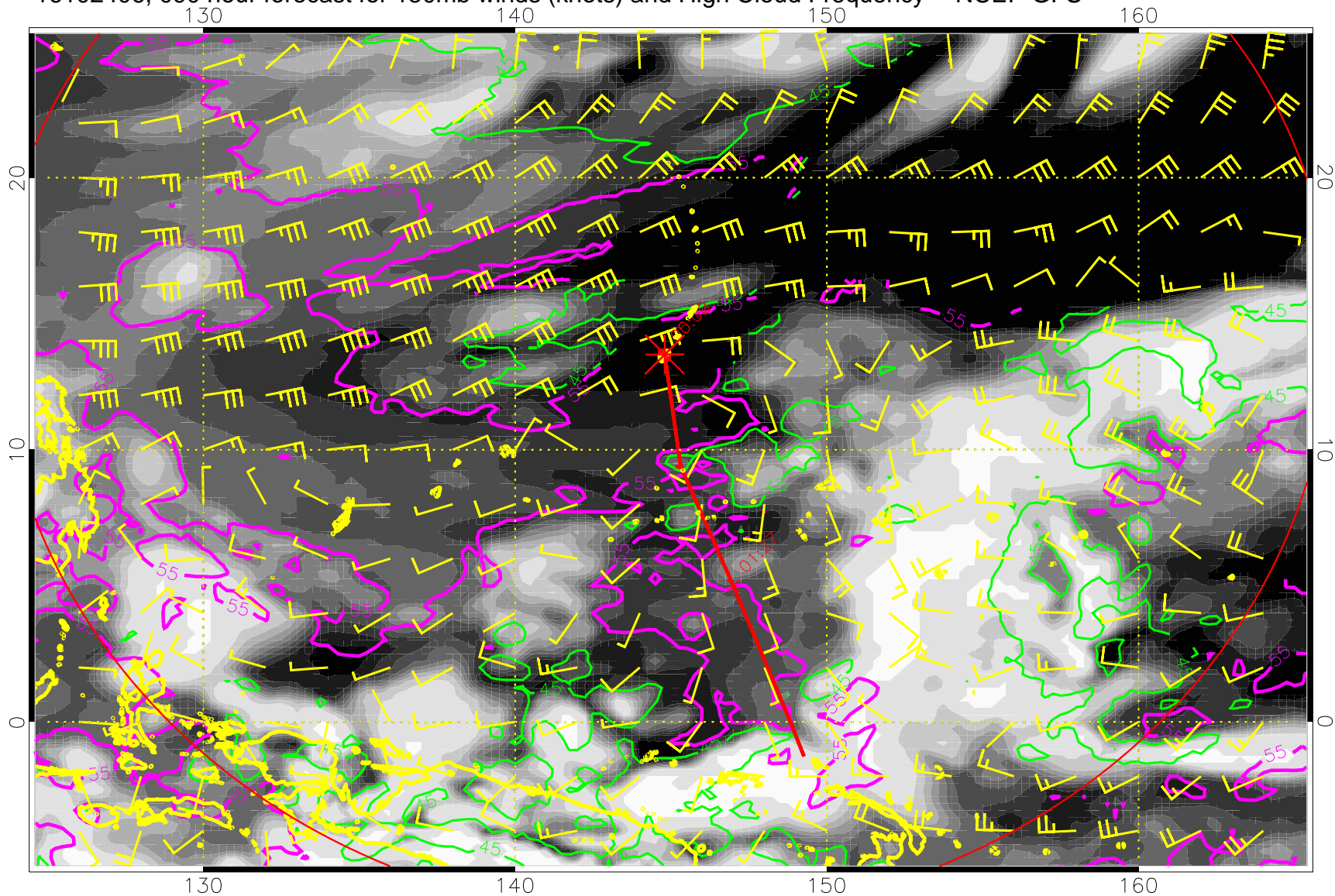
55 kft 45 kft

16102400, 084 hour forecast for 150mb winds (knots) and High Cloud Frequency -- NCEP GFS



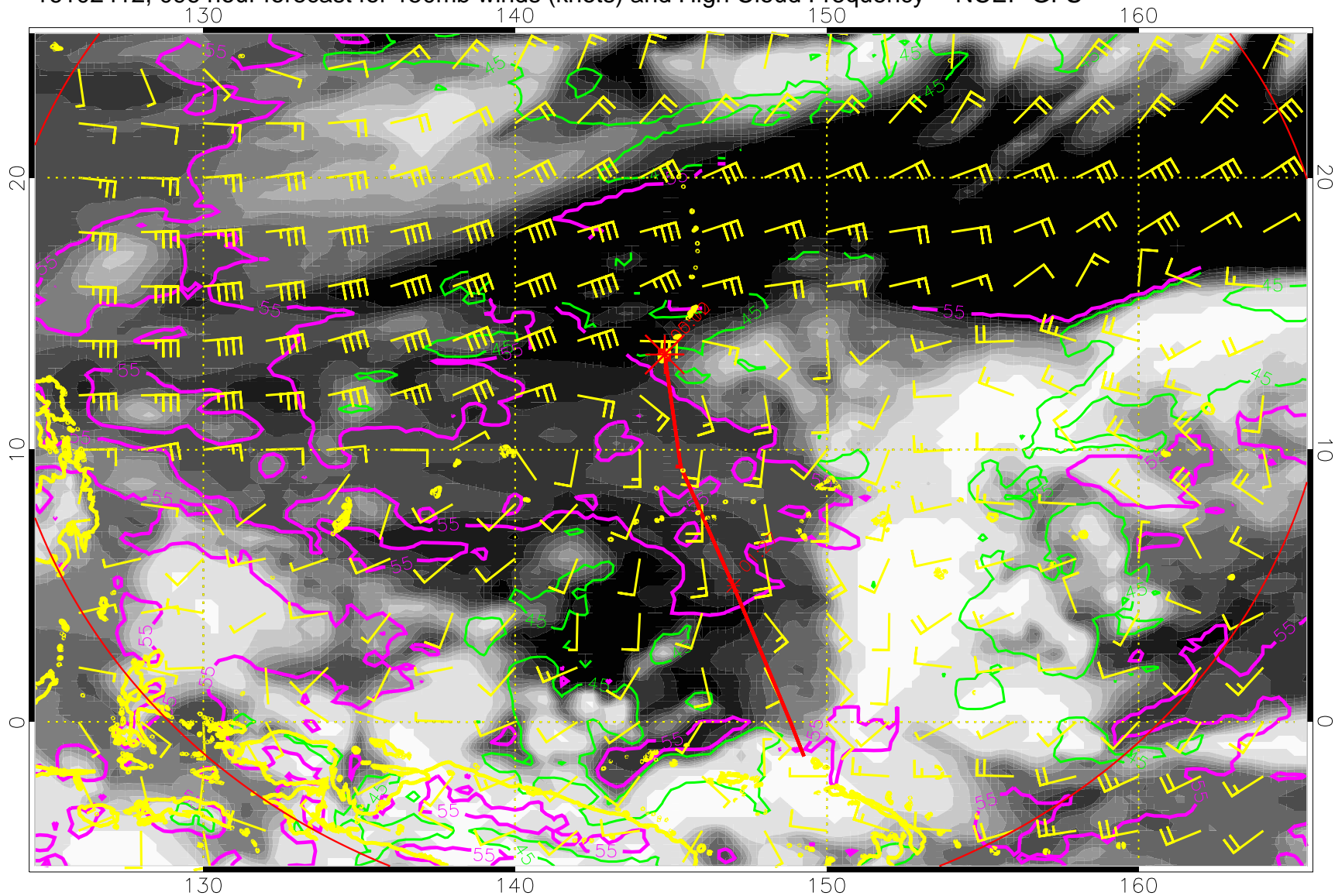
55 kft 45 kft

16102406, 090 hour forecast for 150mb winds (knots) and High Cloud Frequency -- NCEP GFS



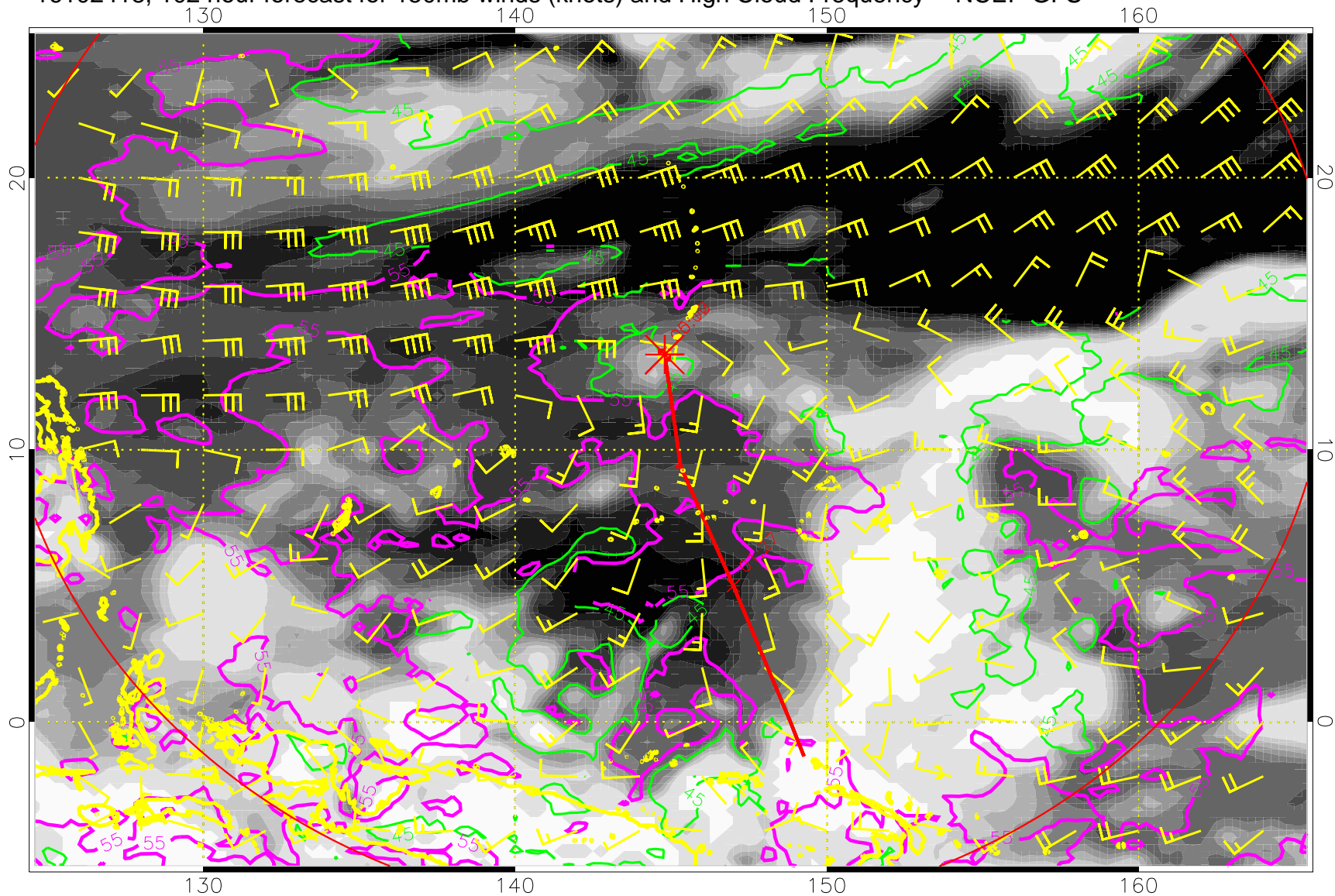
55 kft
45 kft

16102412, 096 hour forecast for 150mb winds (knots) and High Cloud Frequency -- NCEP GFS



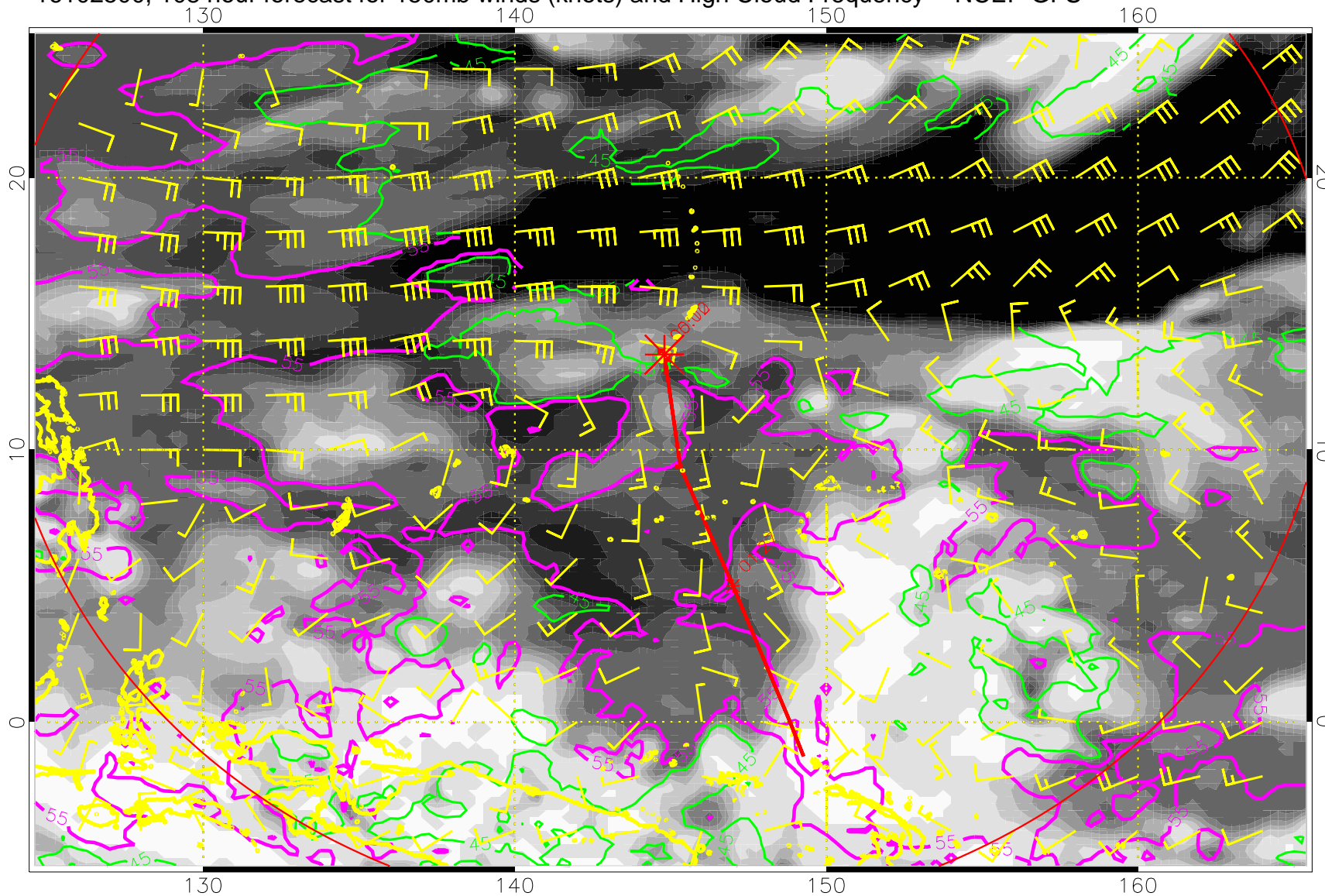
55 kft 45 kft

16102418, 102 hour forecast for 150mb winds (knots) and High Cloud Frequency -- NCEP GFS



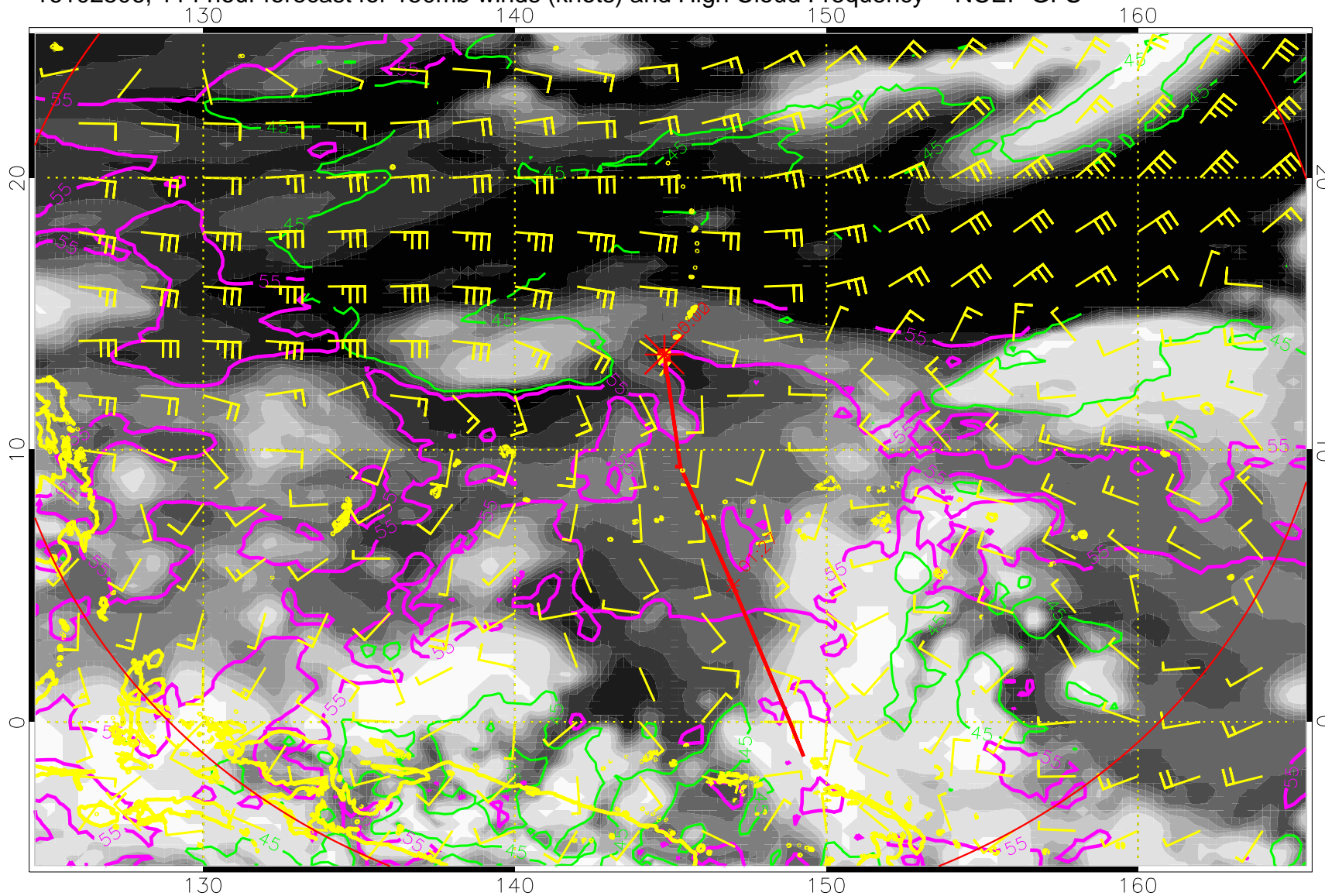
55 kft 45 kft

16102500, 108 hour forecast for 150mb winds (knots) and High Cloud Frequency -- NCEP GFS



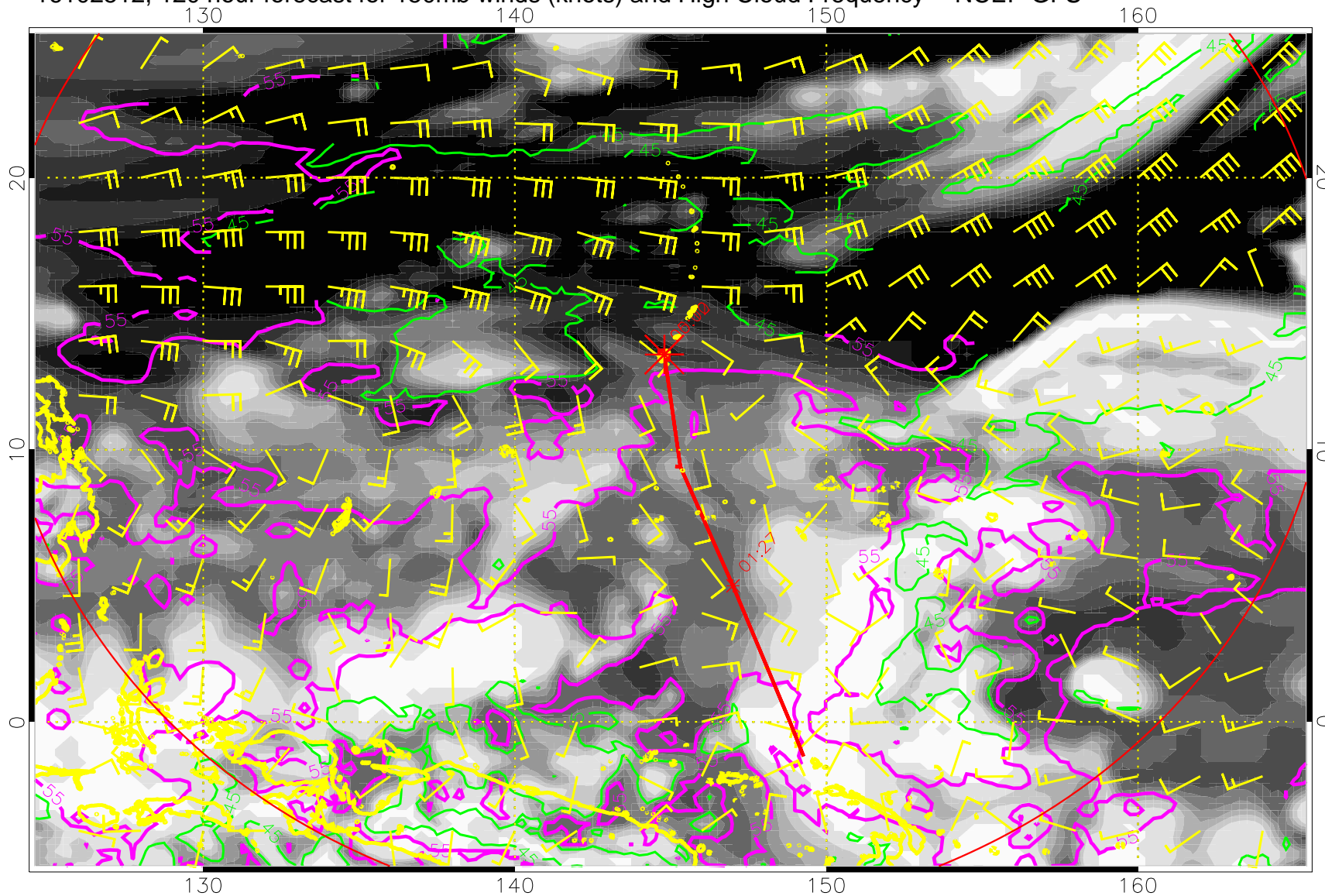
55 kft
45 kft

16102506, 114 hour forecast for 150mb winds (knots) and High Cloud Frequency -- NCEP GFS



55 kft
45 kft

16102512, 120 hour forecast for 150mb winds (knots) and High Cloud Frequency -- NCEP GFS



0.0 0.2 0.4 0.6 0.8 1.0
High Cloud Frequency

55 kft 45 kft