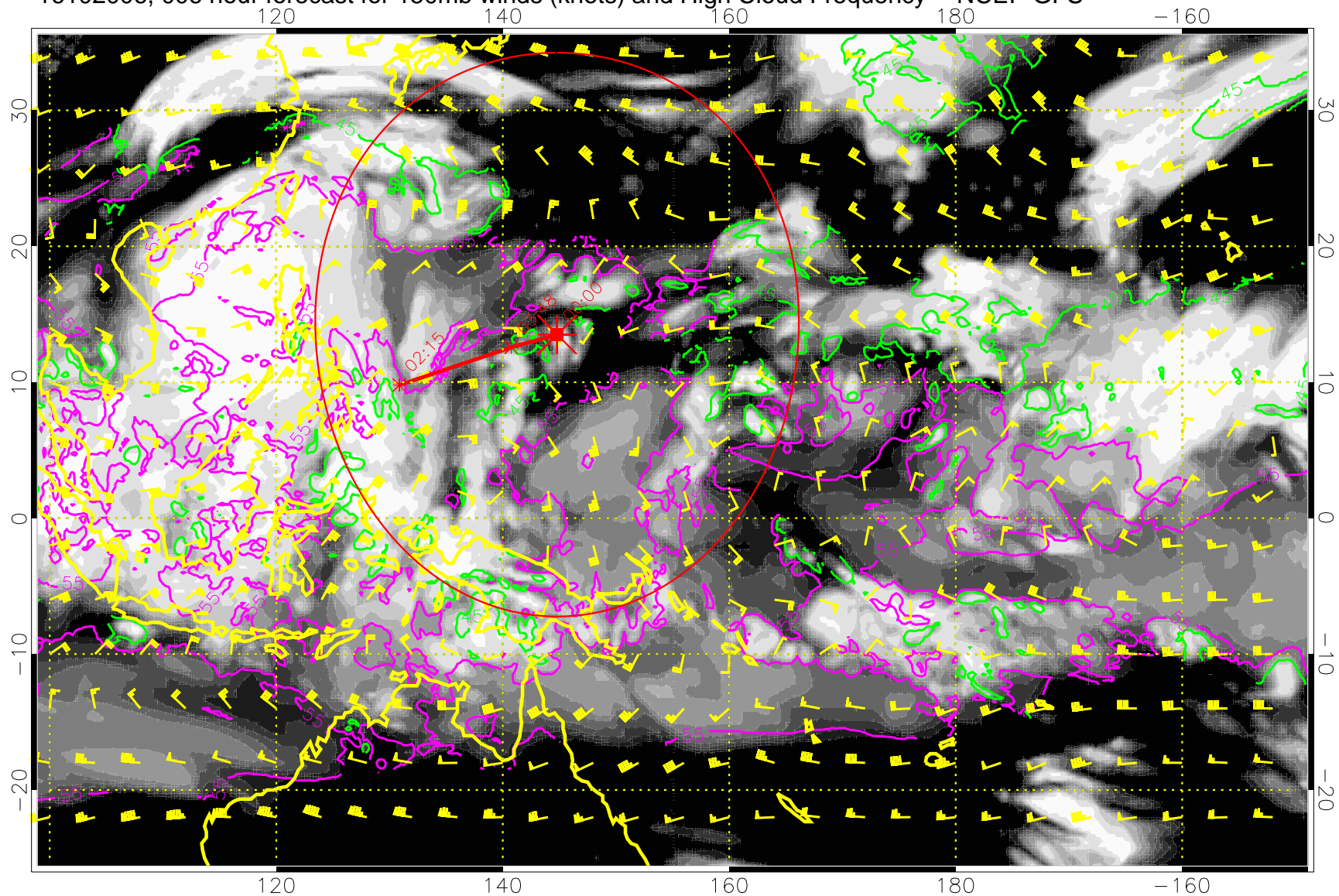


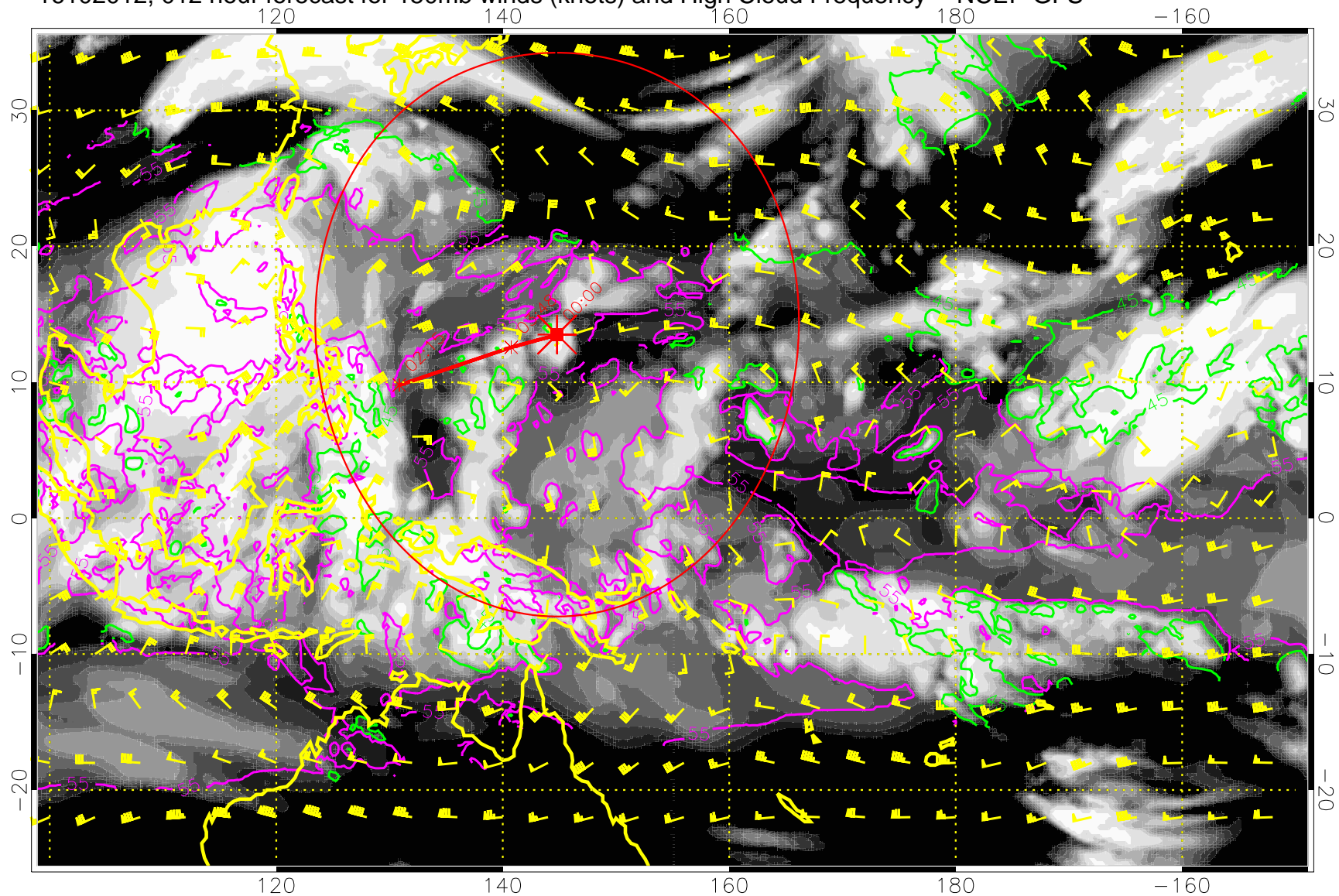
16102006, 006 hour forecast for 150mb winds (knots) and High Cloud Frequency -- NCEP GFS



45 kft
55 kft

Range ring of 2304 km

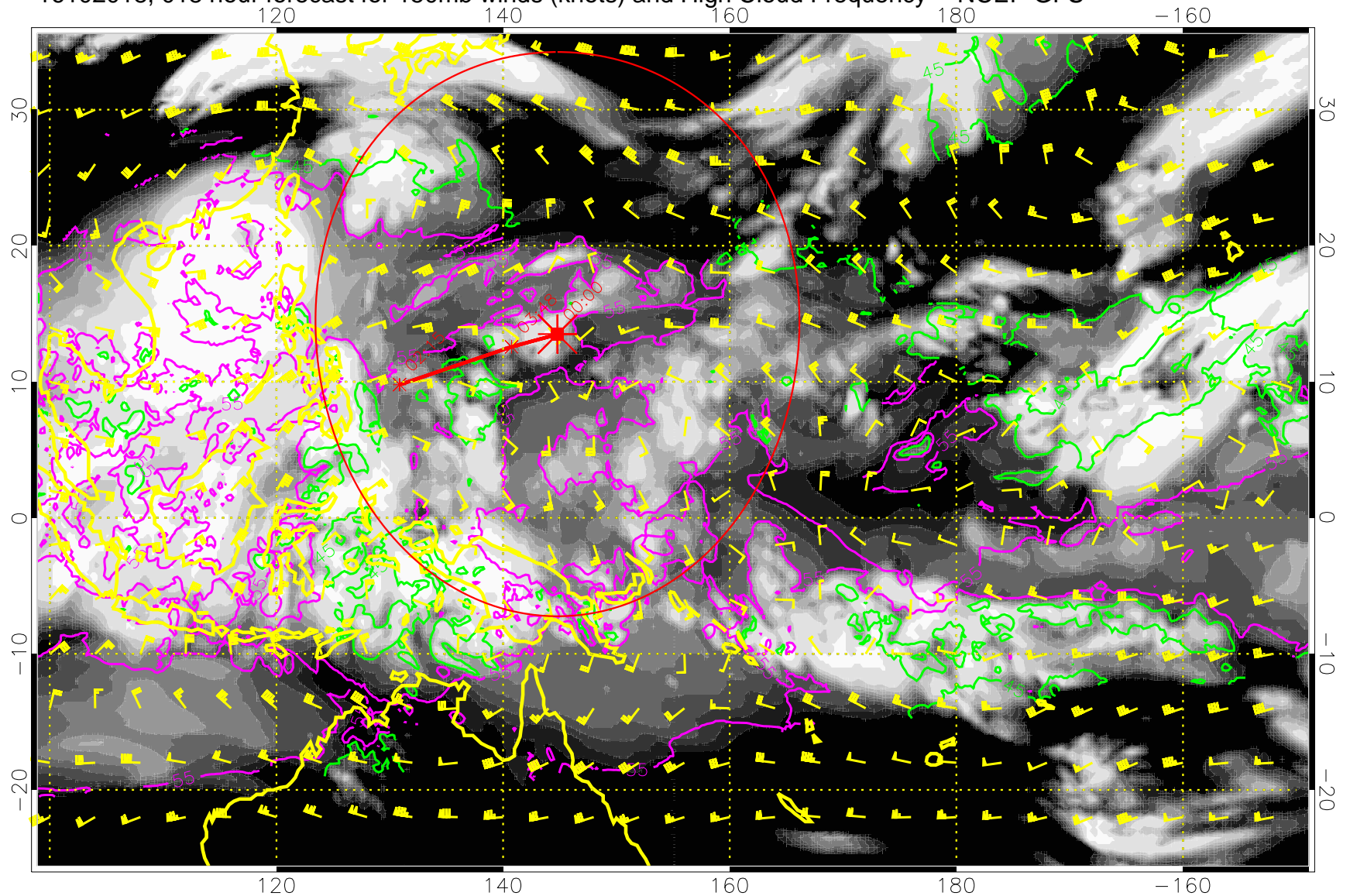
16102012, 012 hour forecast for 150mb winds (knots) and High Cloud Frequency -- NCEP GFS



45 kft
55 kft

Range ring of 2304 km

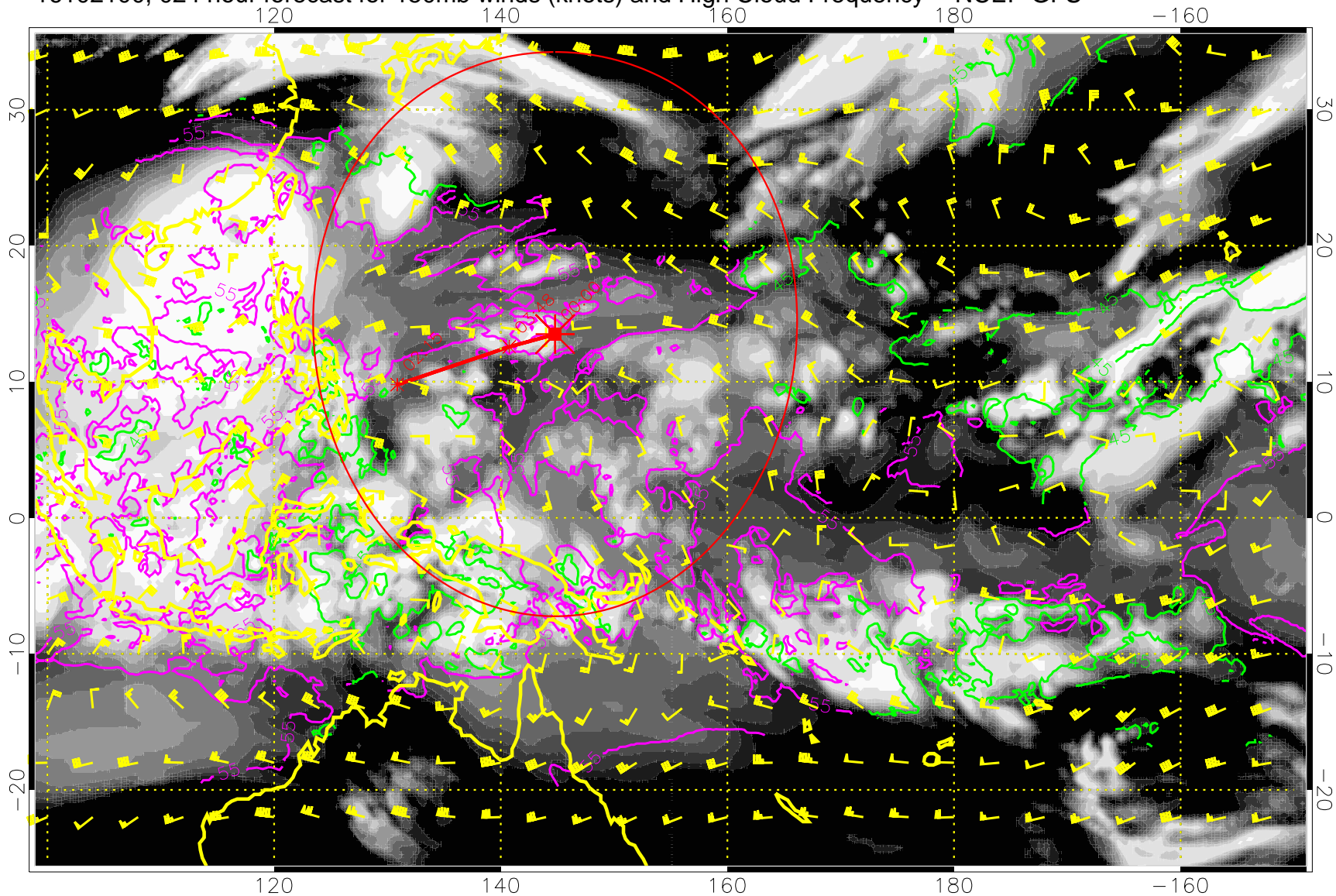
16102018, 018 hour forecast for 150mb winds (knots) and High Cloud Frequency -- NCEP GFS



45 kft
55 kft

Range ring of 2304 km

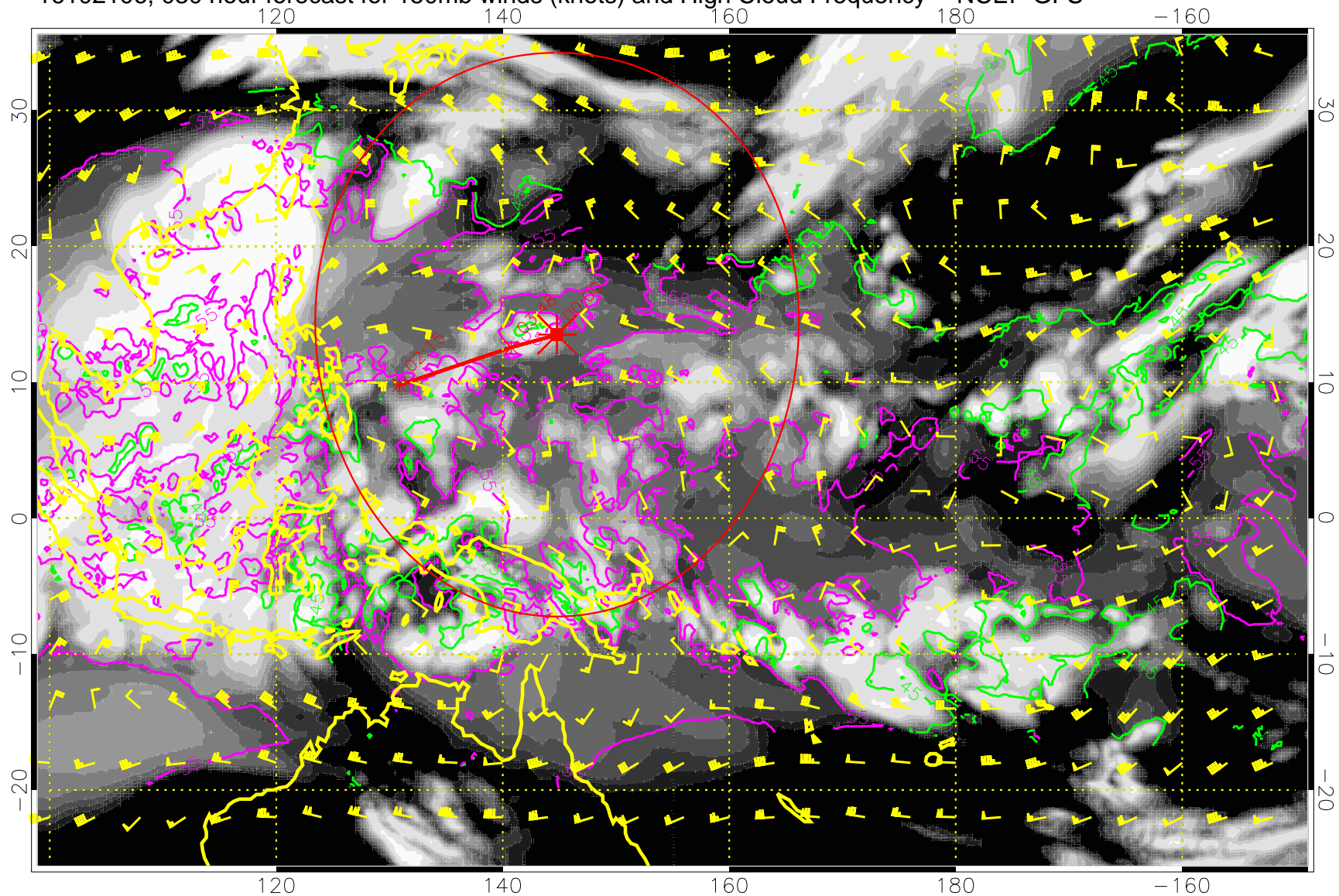
16102100, 024 hour forecast for 150mb winds (knots) and High Cloud Frequency -- NCEP GFS



45 kft
55 kft

Range ring of 2304 km

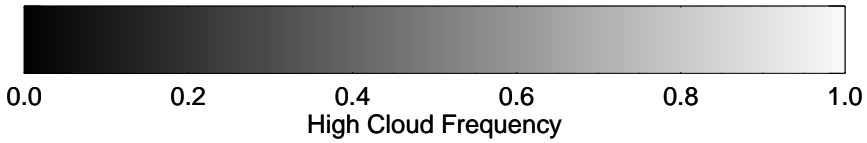
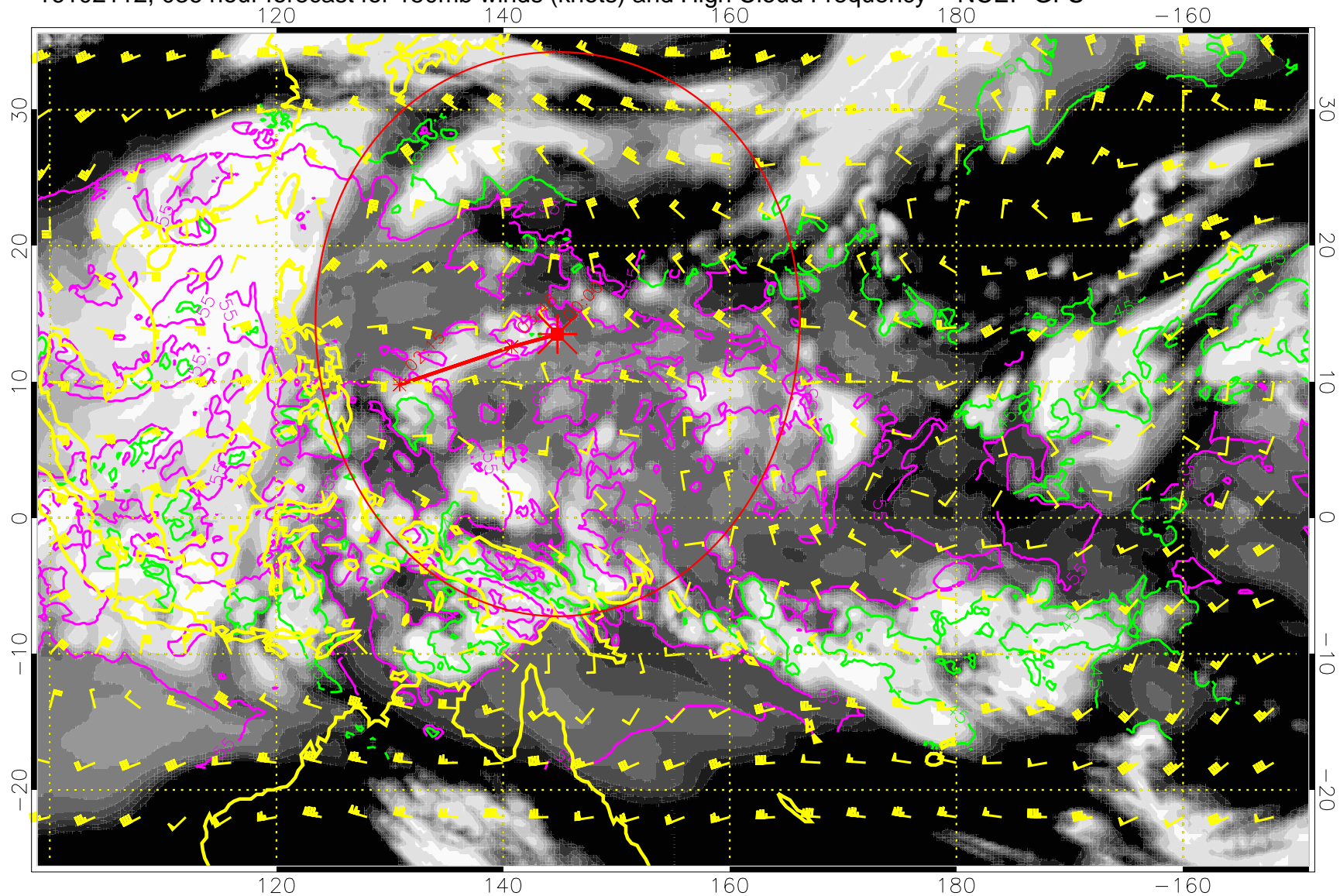
16102106, 030 hour forecast for 150mb winds (knots) and High Cloud Frequency -- NCEP GFS



45 kft
55 kft

Range ring of 2304 km

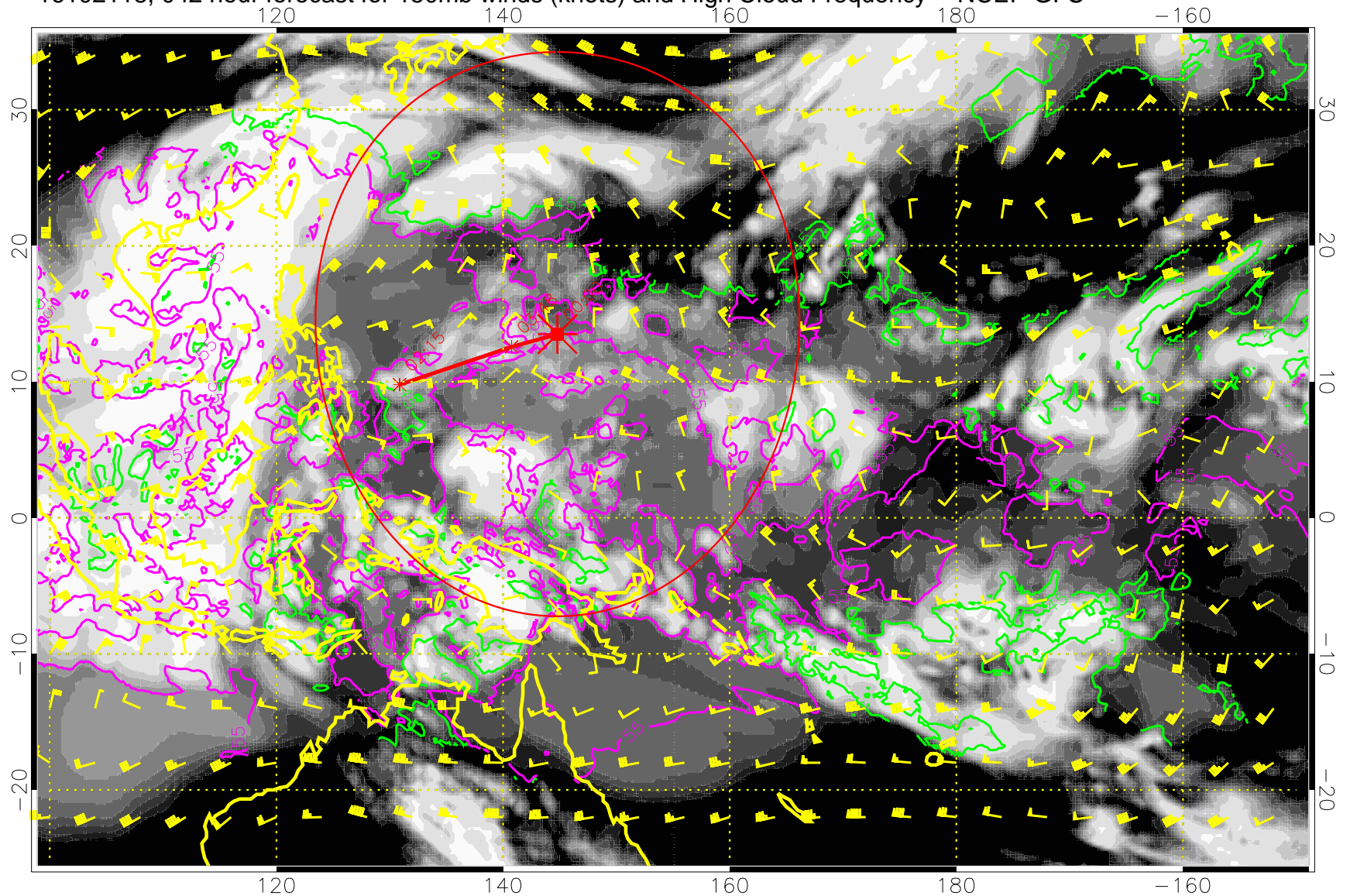
16102112, 036 hour forecast for 150mb winds (knots) and High Cloud Frequency -- NCEP GFS



45 kft
55 kft

Range ring of 2304 km

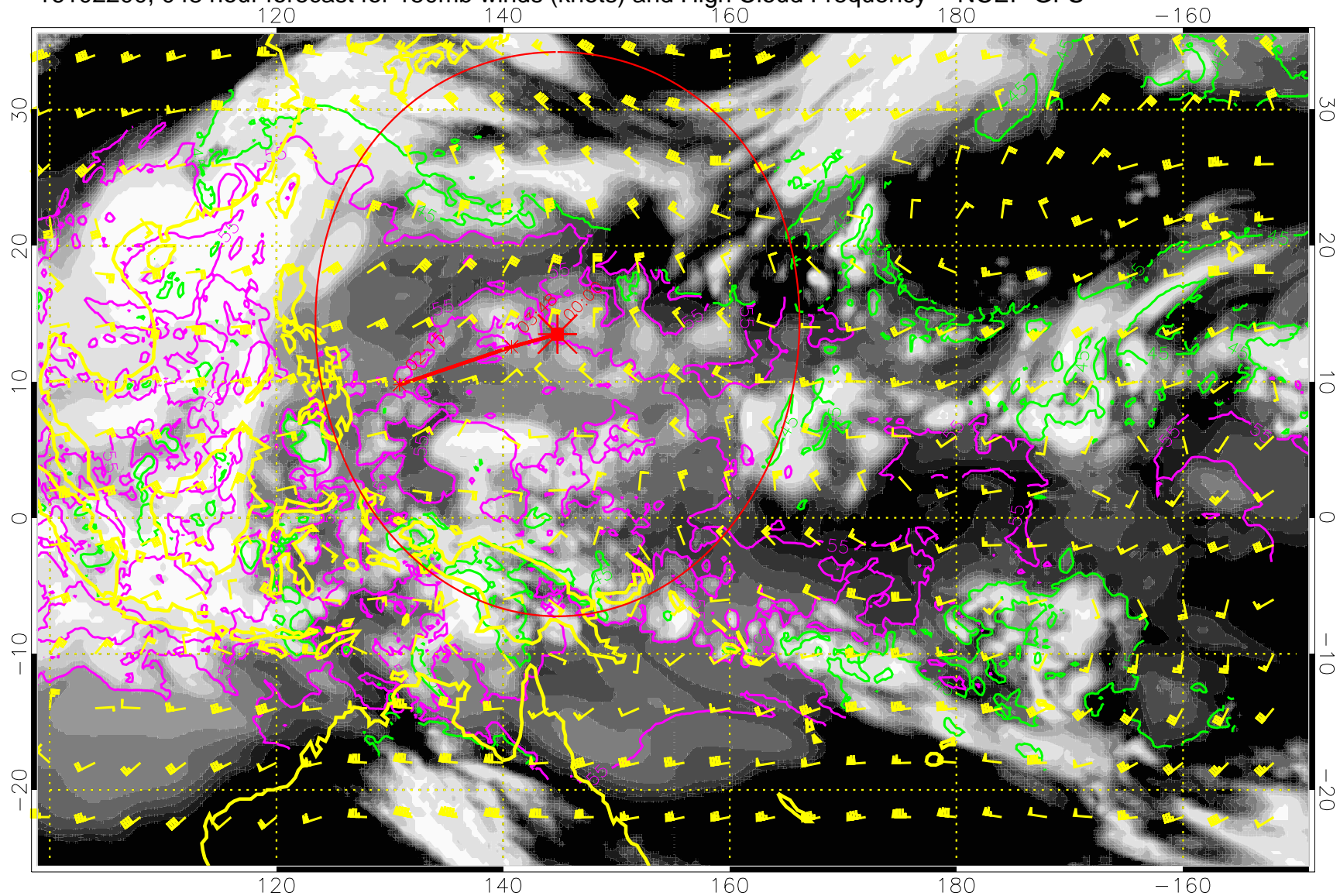
16102118, 042 hour forecast for 150mb winds (knots) and High Cloud Frequency -- NCEP GFS



45 kft
55 kft

Range ring of 2304 km

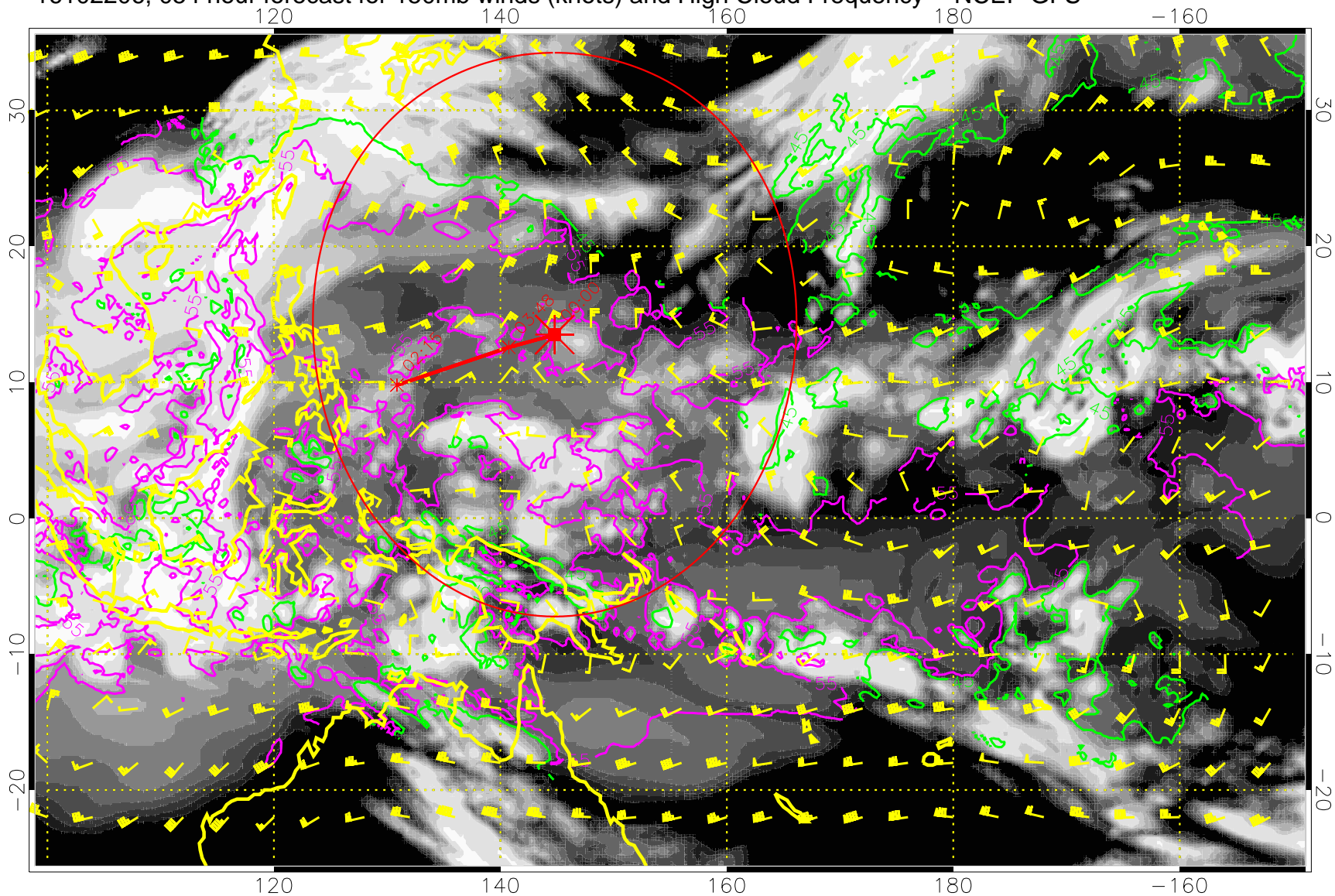
16102200, 048 hour forecast for 150mb winds (knots) and High Cloud Frequency -- NCEP GFS



45 kft
55 kft

Range ring of 2304 km

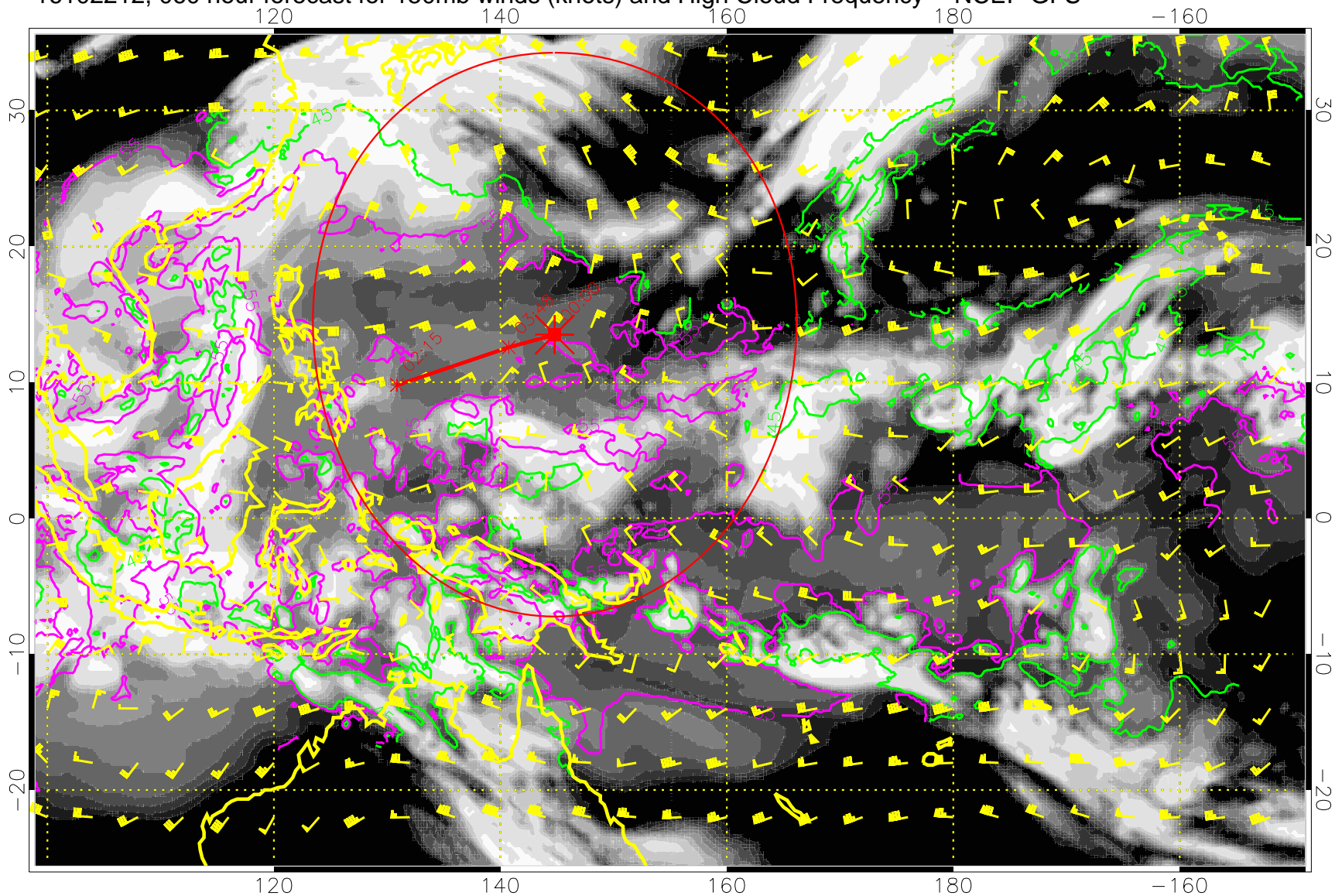
16102206, 054 hour forecast for 150mb winds (knots) and High Cloud Frequency -- NCEP GFS



45 kft
55 kft

Range ring of 2304 km

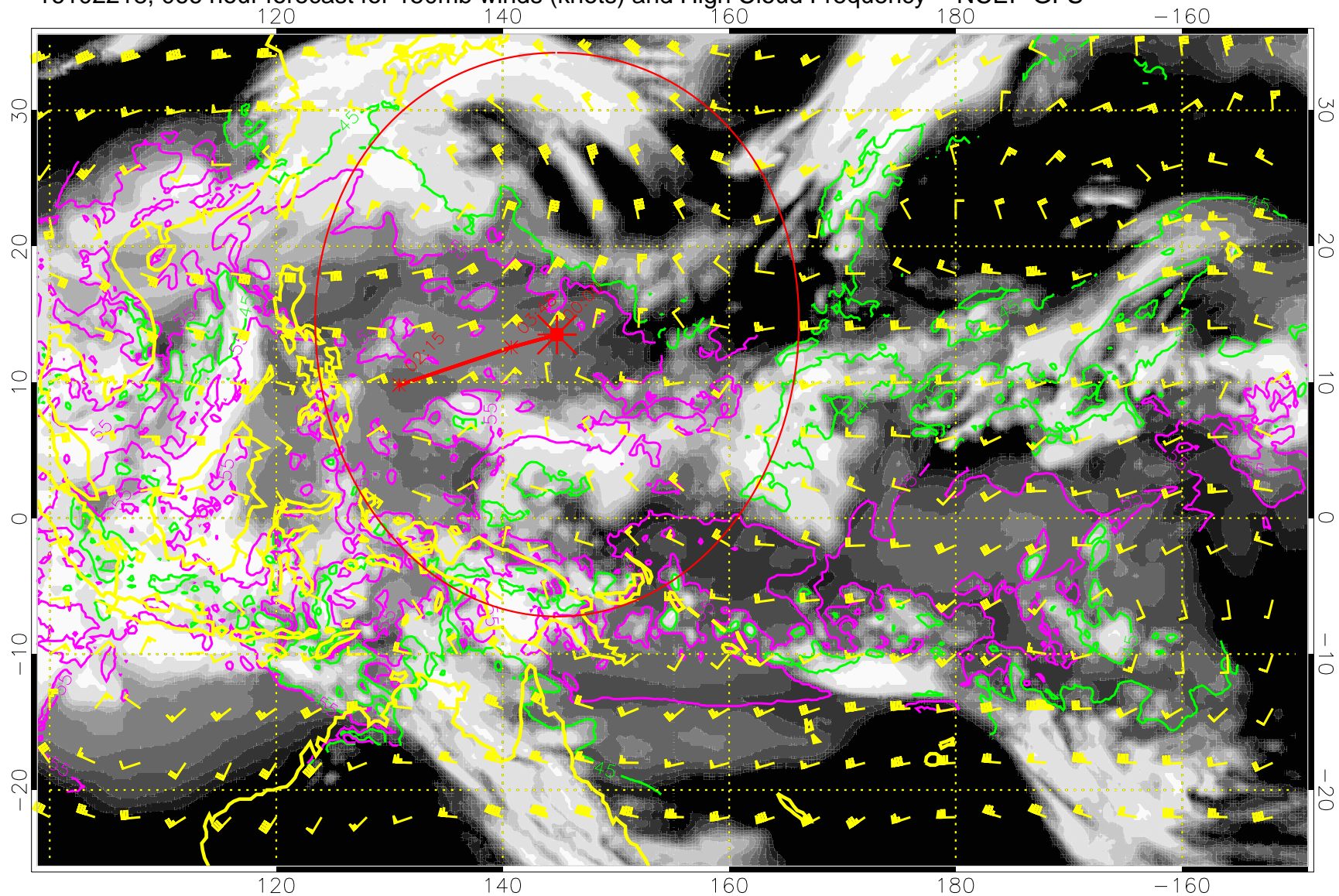
16102212, 060 hour forecast for 150mb winds (knots) and High Cloud Frequency -- NCEP GFS



45 kft
55 kft

Range ring of 2304 km

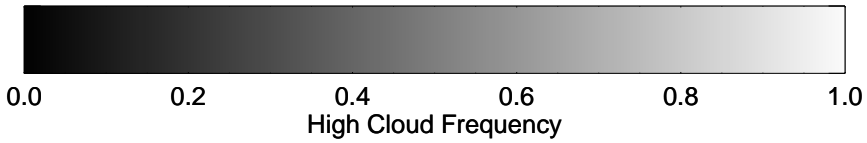
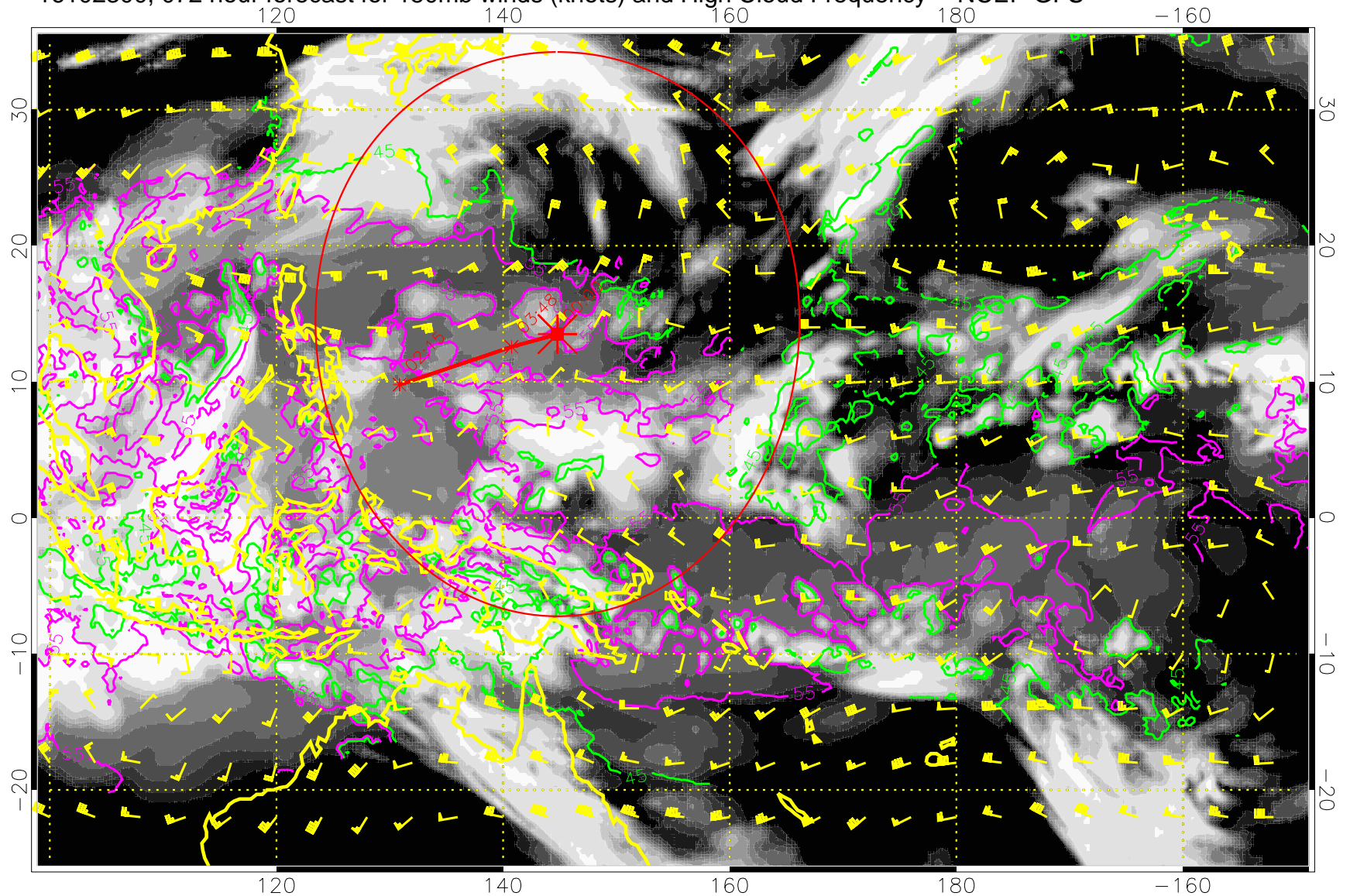
16102218, 066 hour forecast for 150mb winds (knots) and High Cloud Frequency -- NCEP GFS



45 kft
55 kft

Range ring of 2304 km

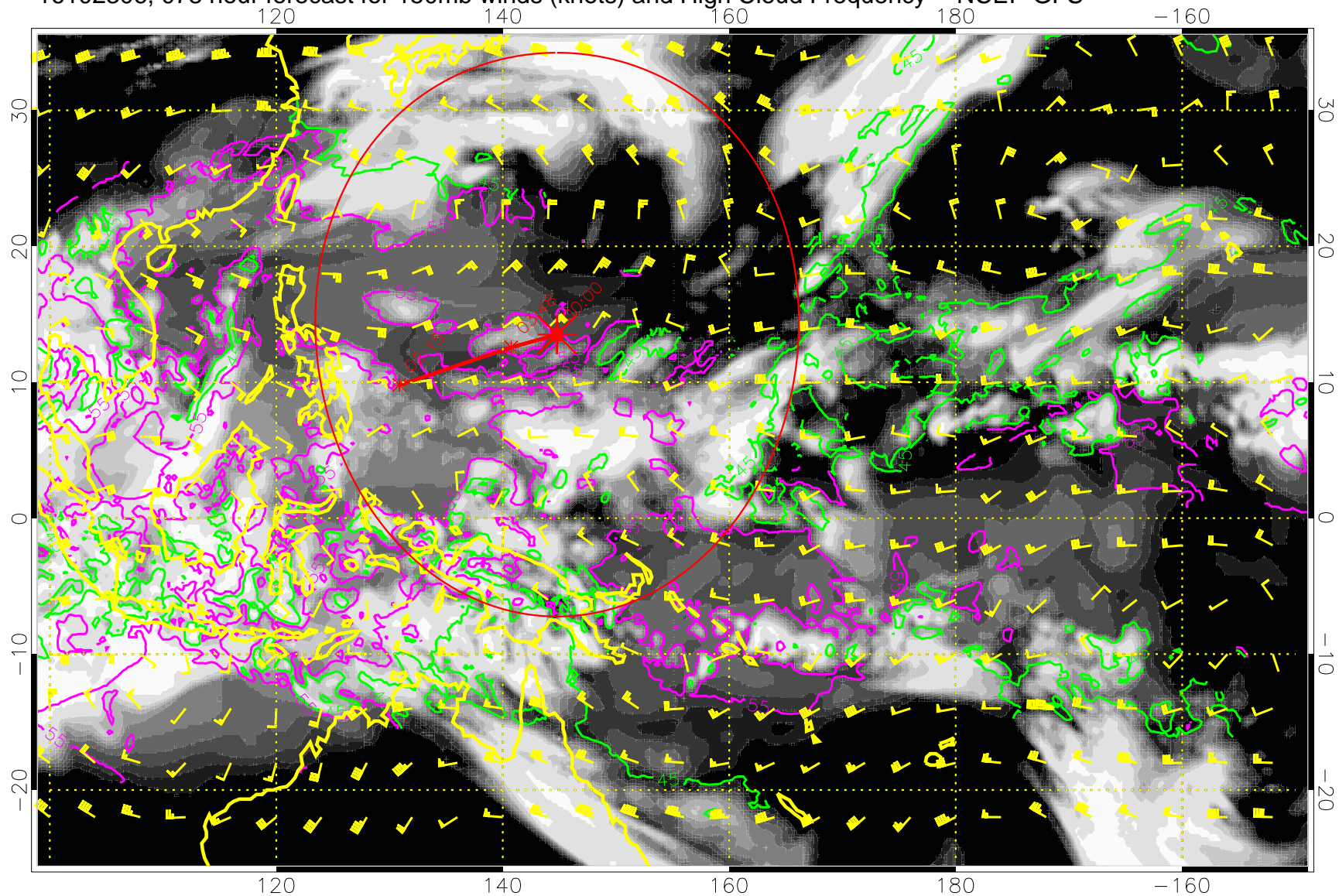
16102300, 072 hour forecast for 150mb winds (knots) and High Cloud Frequency -- NCEP GFS



45 kft
55 kft

Range ring of 2304 km

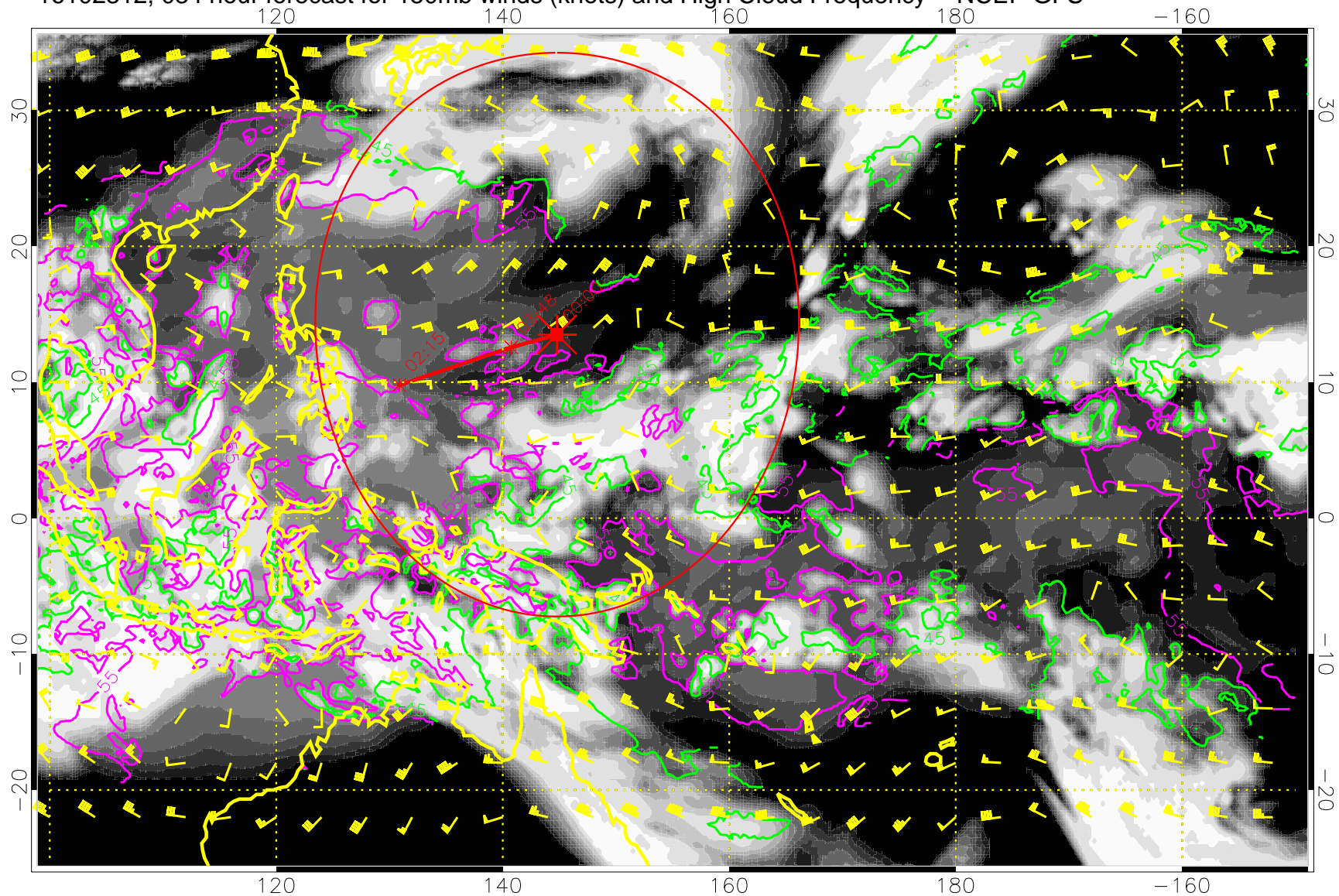
16102306, 078 hour forecast for 150mb winds (knots) and High Cloud Frequency -- NCEP GFS



45 kft
55 kft

Range ring of 2304 km

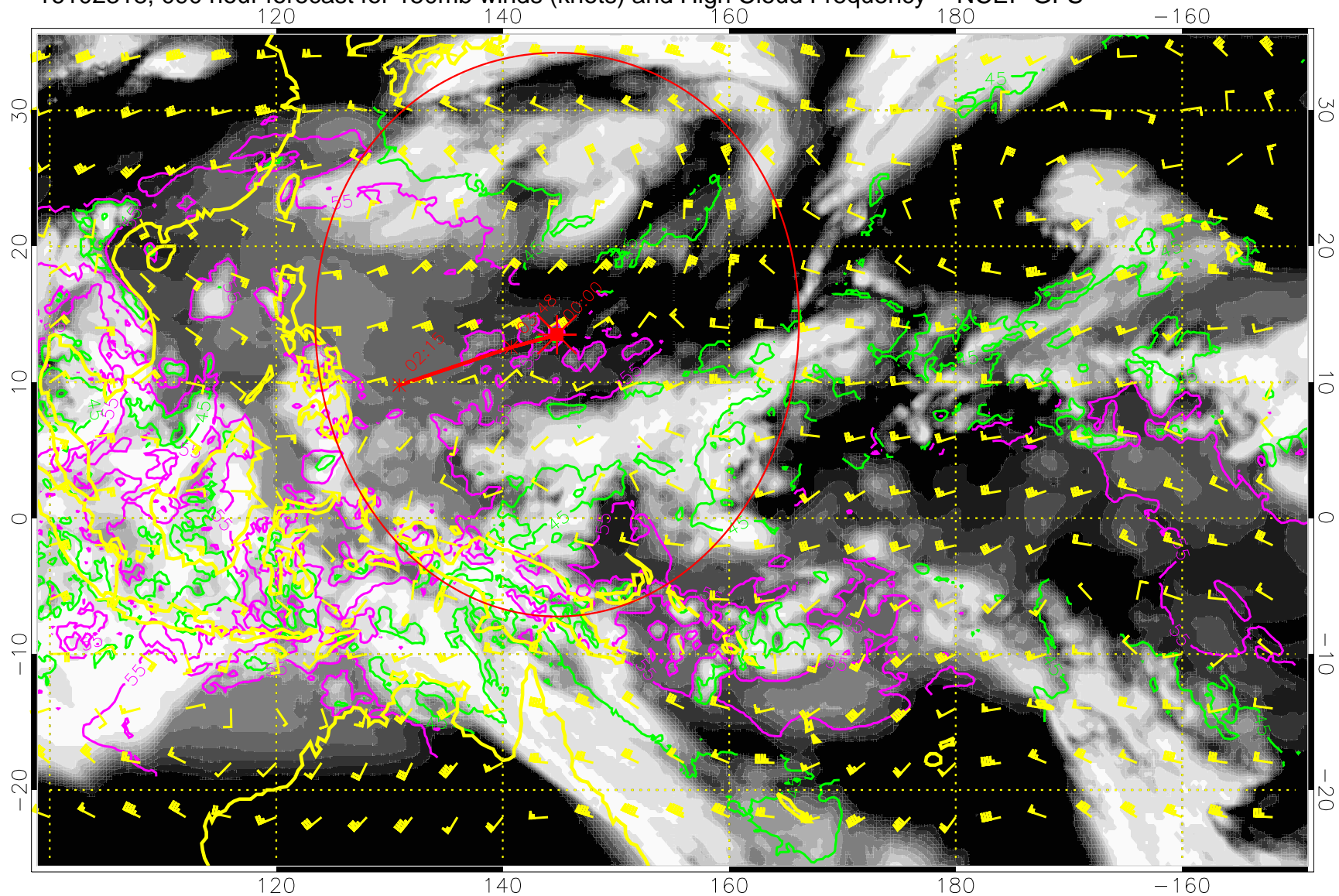
16102312, 084 hour forecast for 150mb winds (knots) and High Cloud Frequency -- NCEP GFS



45 kft
55 kft

Range ring of 2304 km

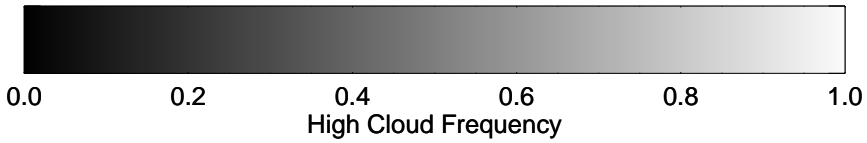
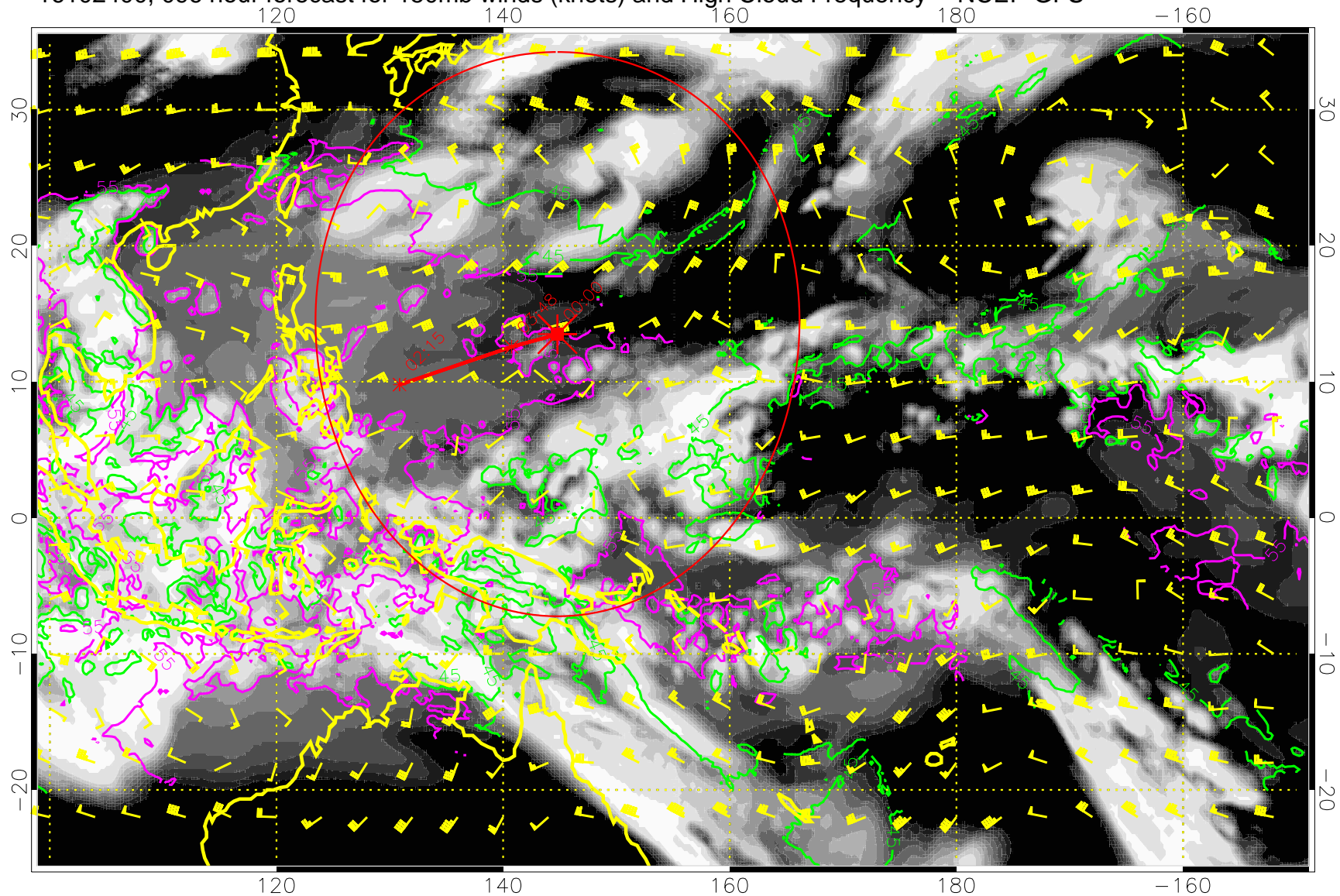
16102318, 090 hour forecast for 150mb winds (knots) and High Cloud Frequency -- NCEP GFS



45 kft
55 kft

Range ring of 2304 km

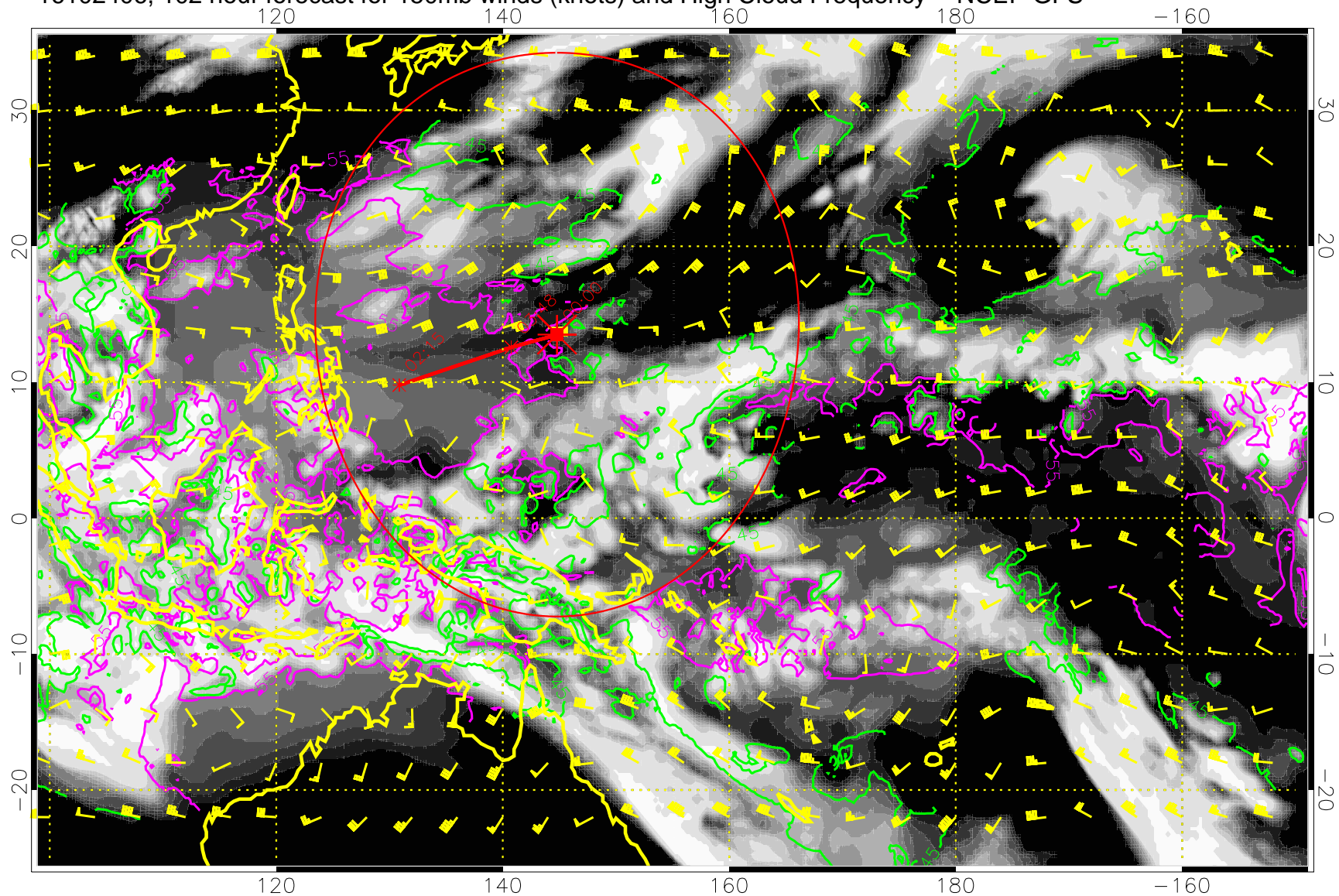
16102400, 096 hour forecast for 150mb winds (knots) and High Cloud Frequency -- NCEP GFS



45 kft
55 kft

Range ring of 2304 km

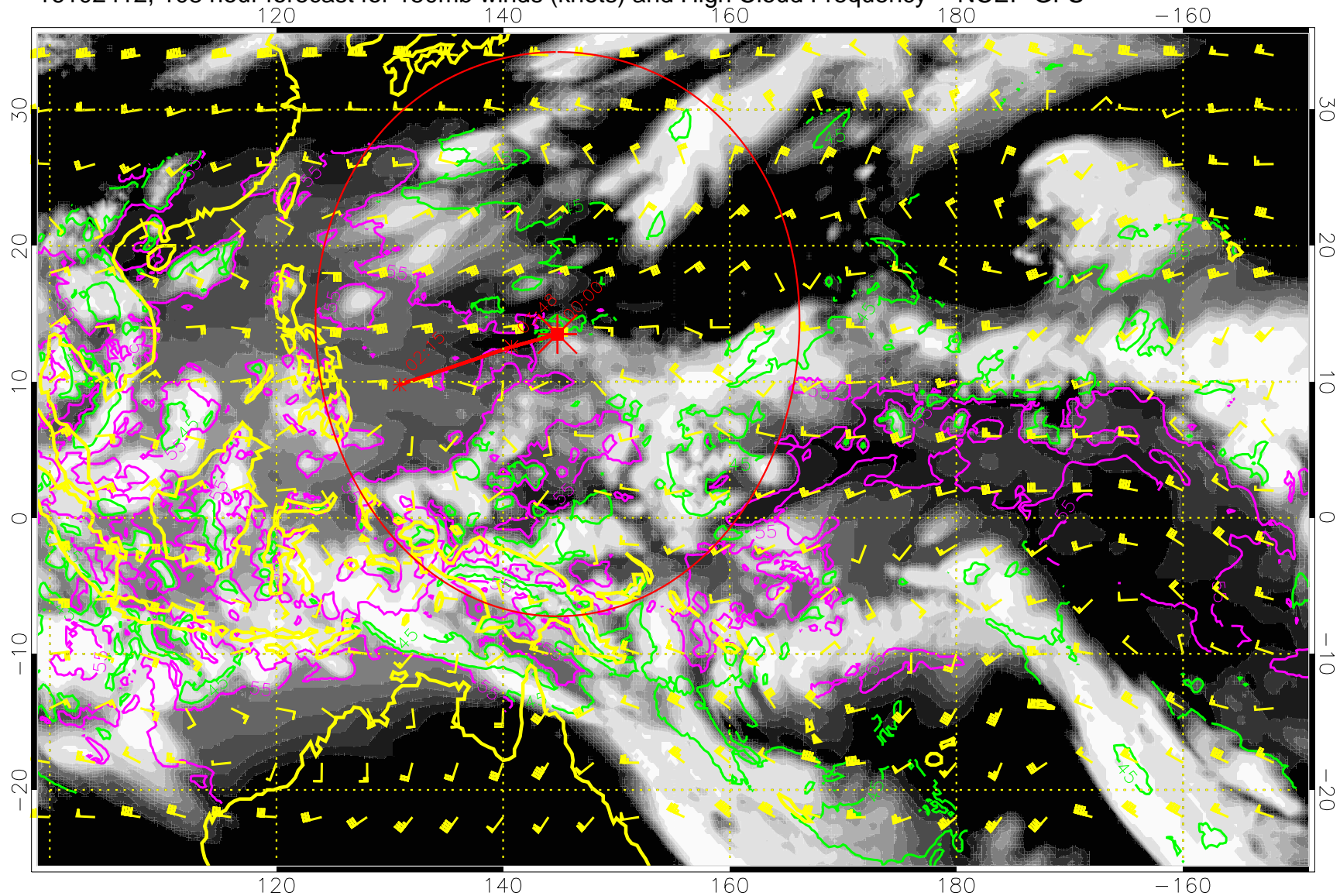
16102406, 102 hour forecast for 150mb winds (knots) and High Cloud Frequency -- NCEP GFS



45 kft
55 kft

Range ring of 2304 km

16102412, 108 hour forecast for 150mb winds (knots) and High Cloud Frequency -- NCEP GFS

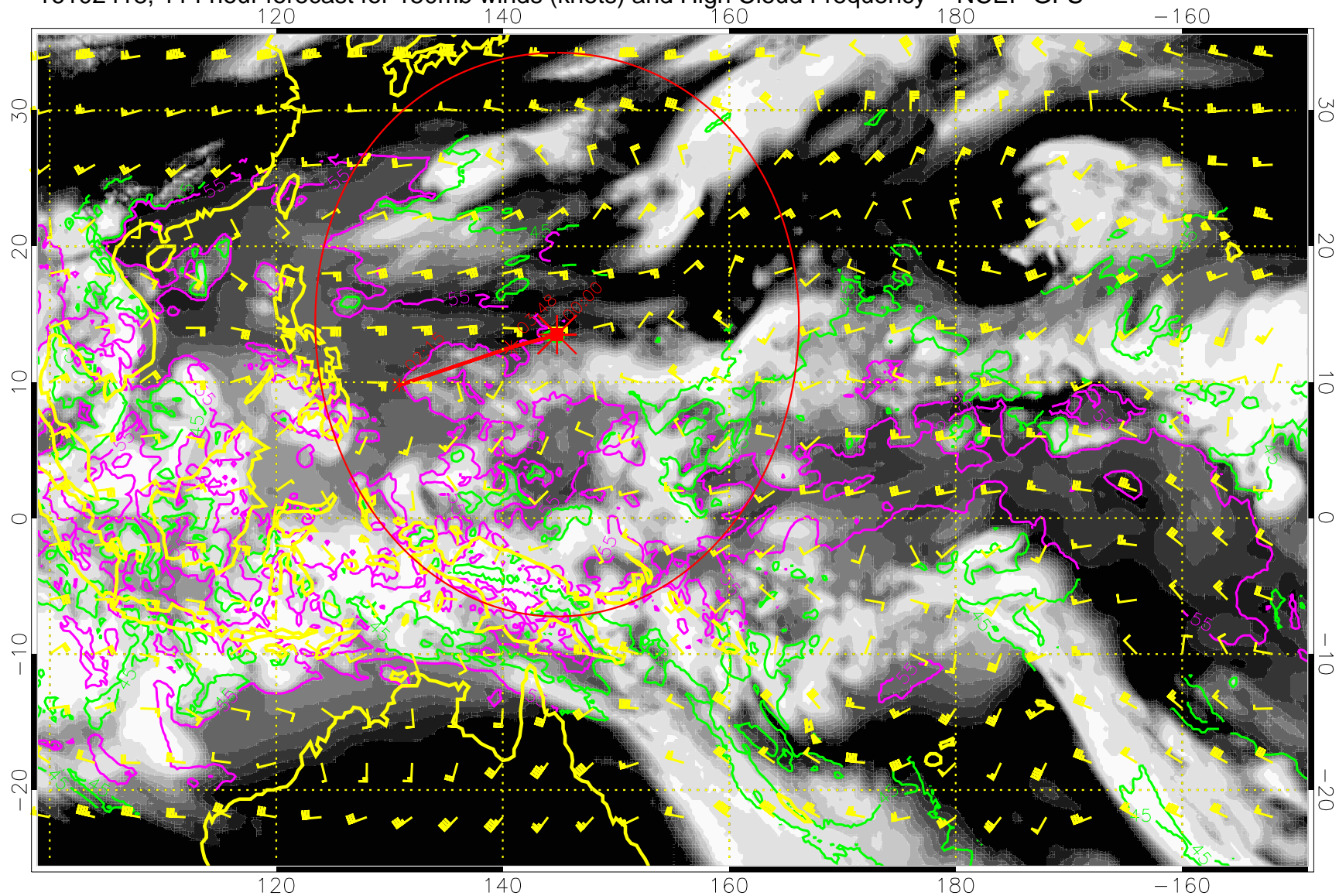


0.0 0.2 0.4 0.6 0.8 1.0
High Cloud Frequency

45 kft
55 kft

Range ring of 2304 km

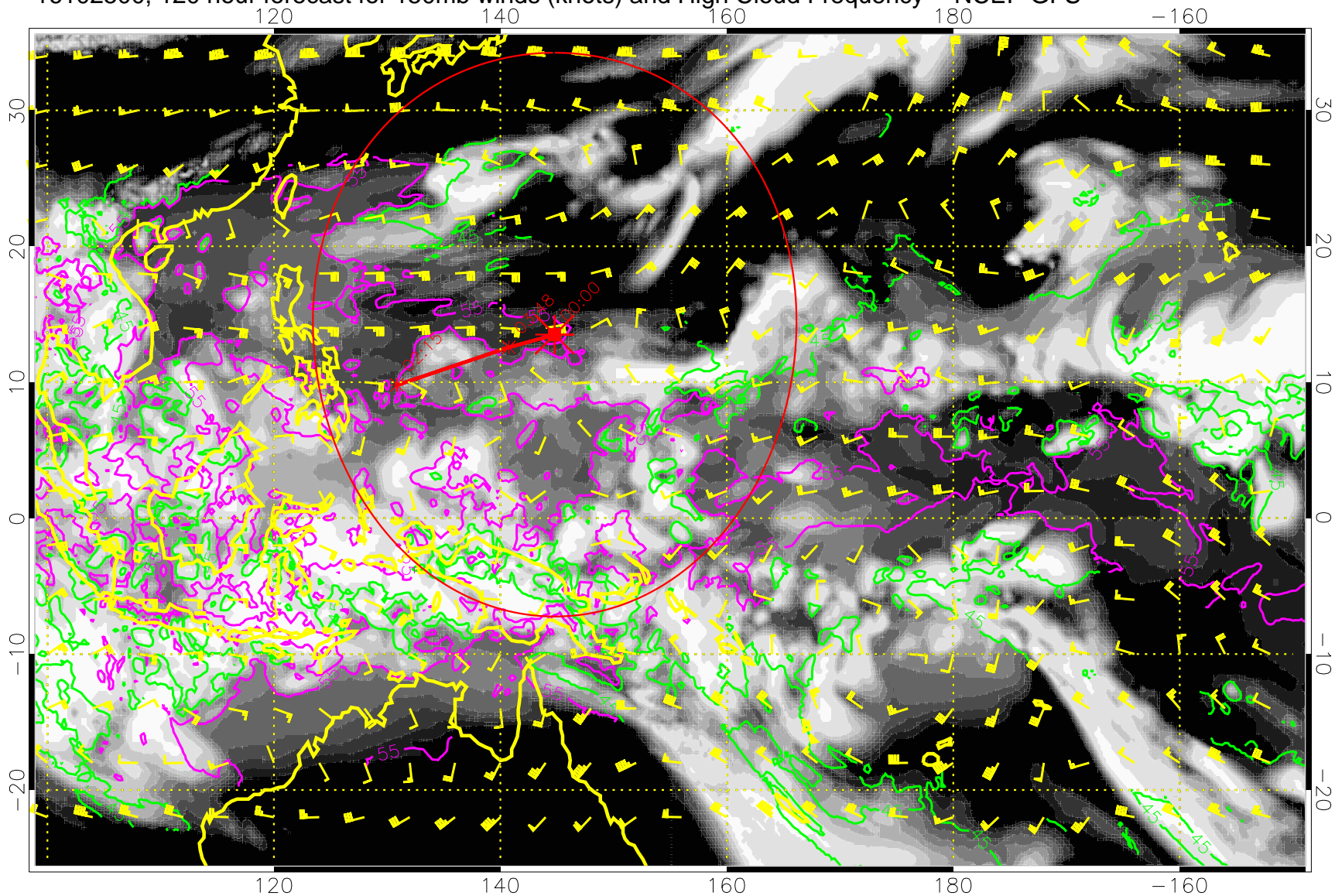
16102418, 114 hour forecast for 150mb winds (knots) and High Cloud Frequency -- NCEP GFS



45 kft
55 kft

Range ring of 2304 km

16102500, 120 hour forecast for 150mb winds (knots) and High Cloud Frequency -- NCEP GFS



45 kft
55 kft

Range ring of 2304 km