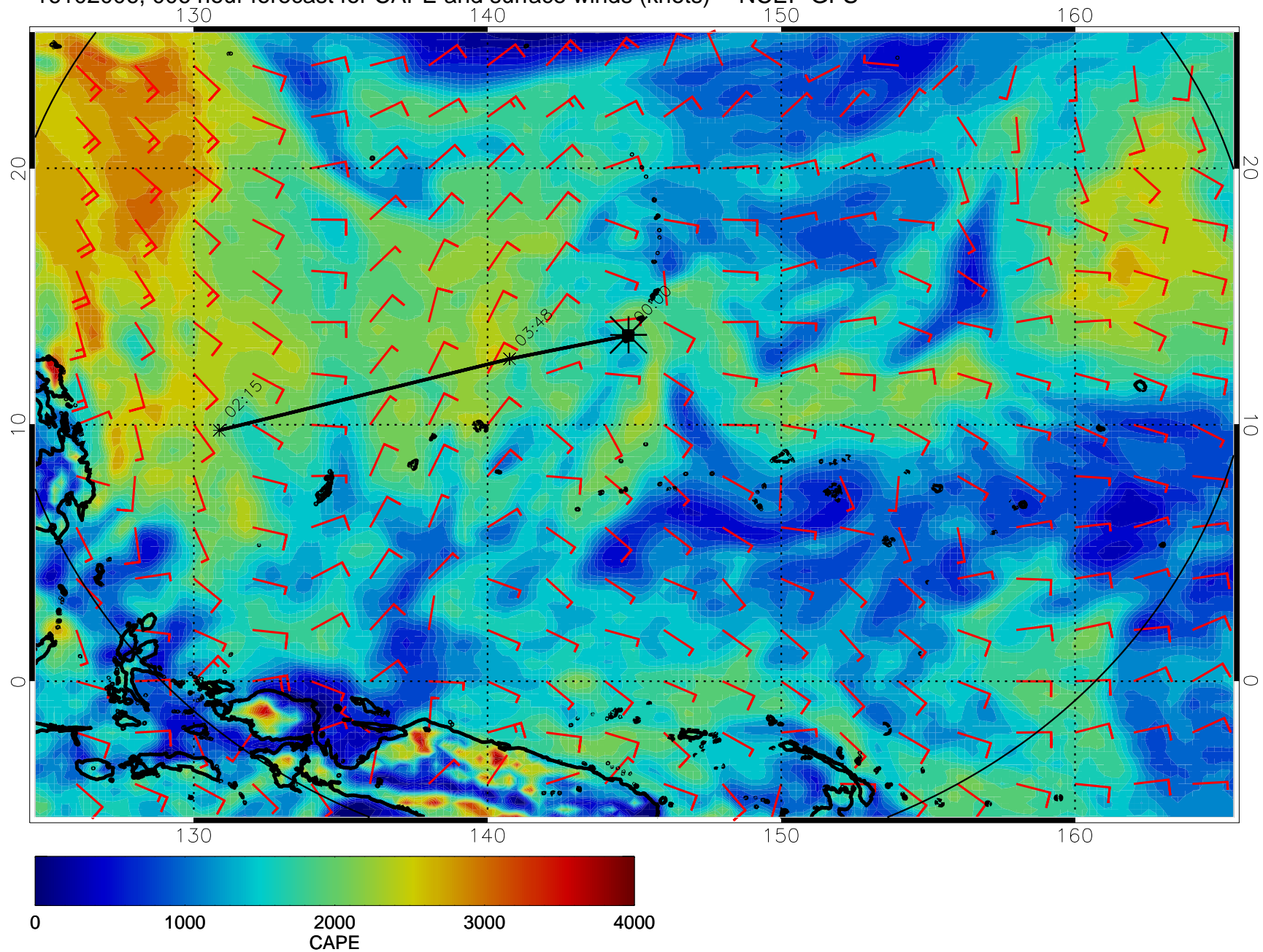
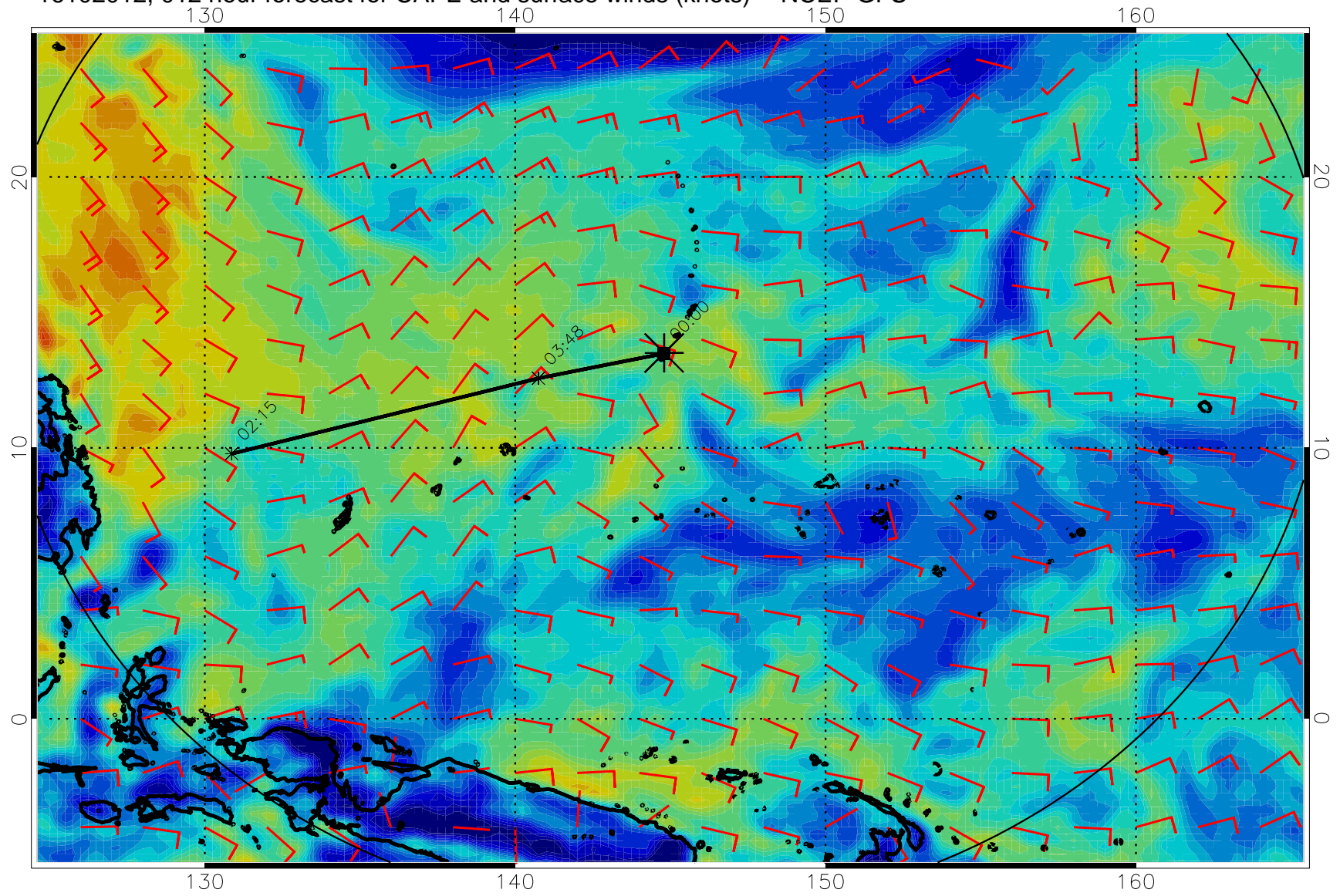


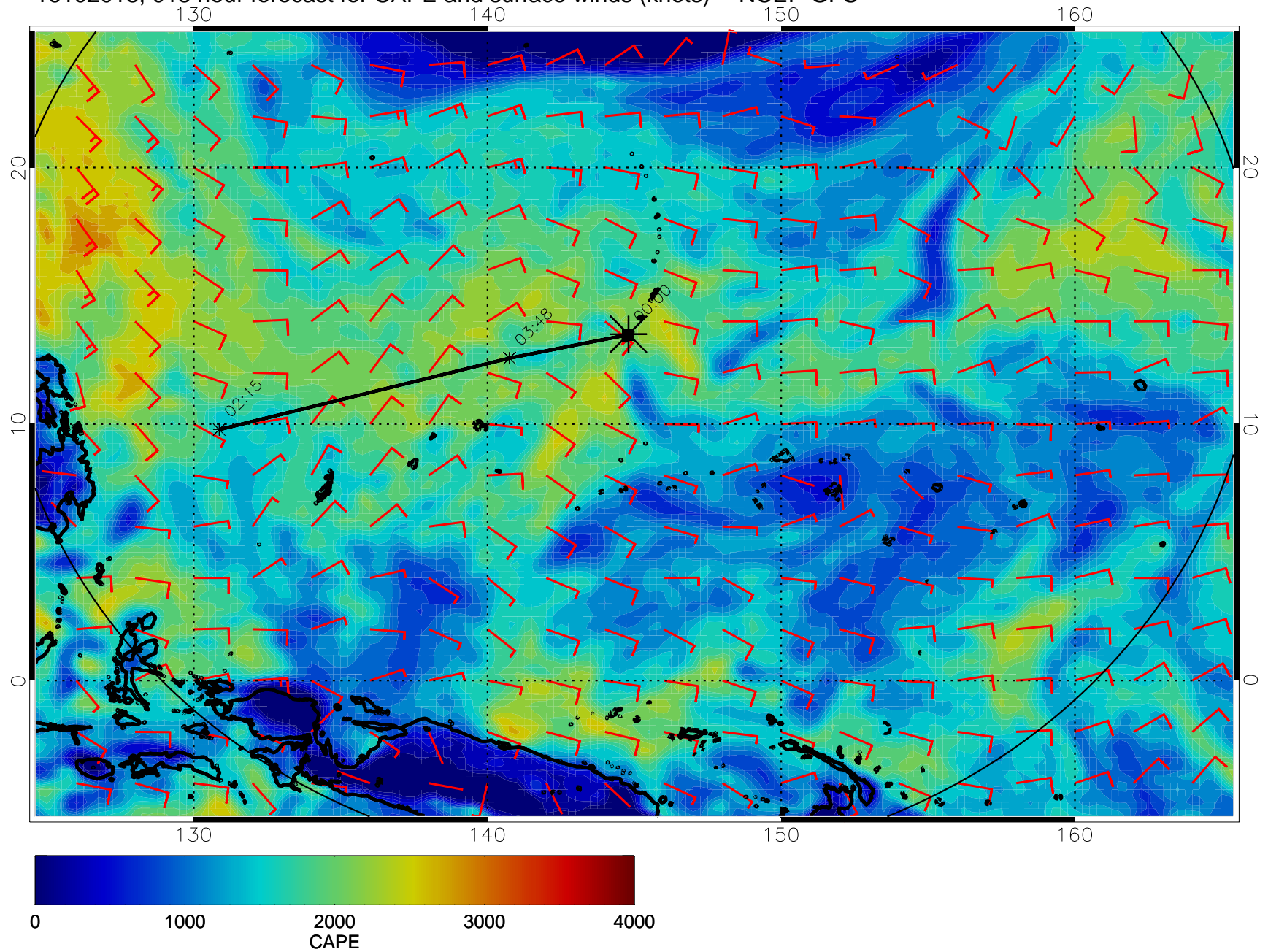
16102006, 006 hour forecast for CAPE and surface winds (knots) -- NCEP GFS



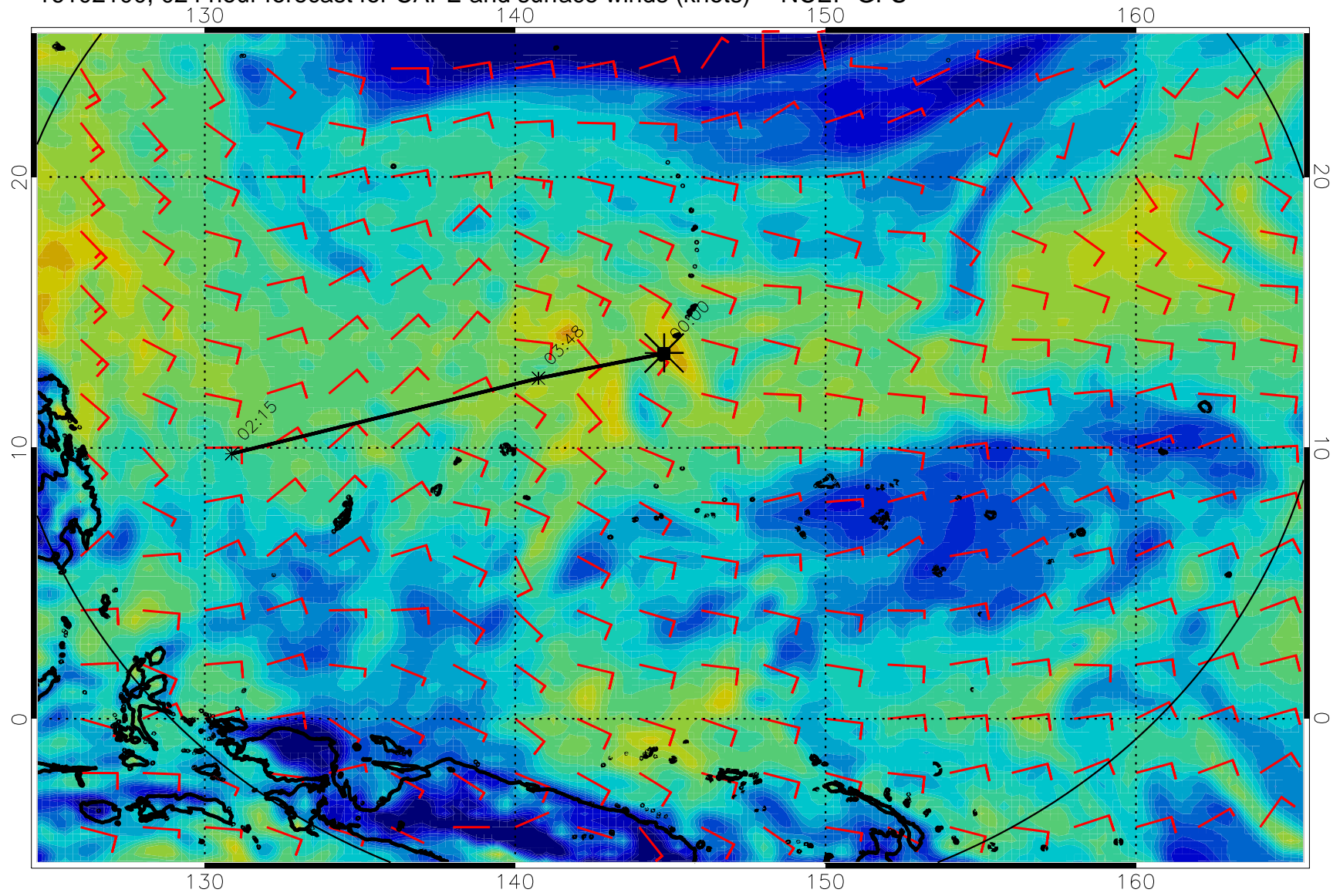
16102012, 012 hour forecast for CAPE and surface winds (knots) -- NCEP GFS



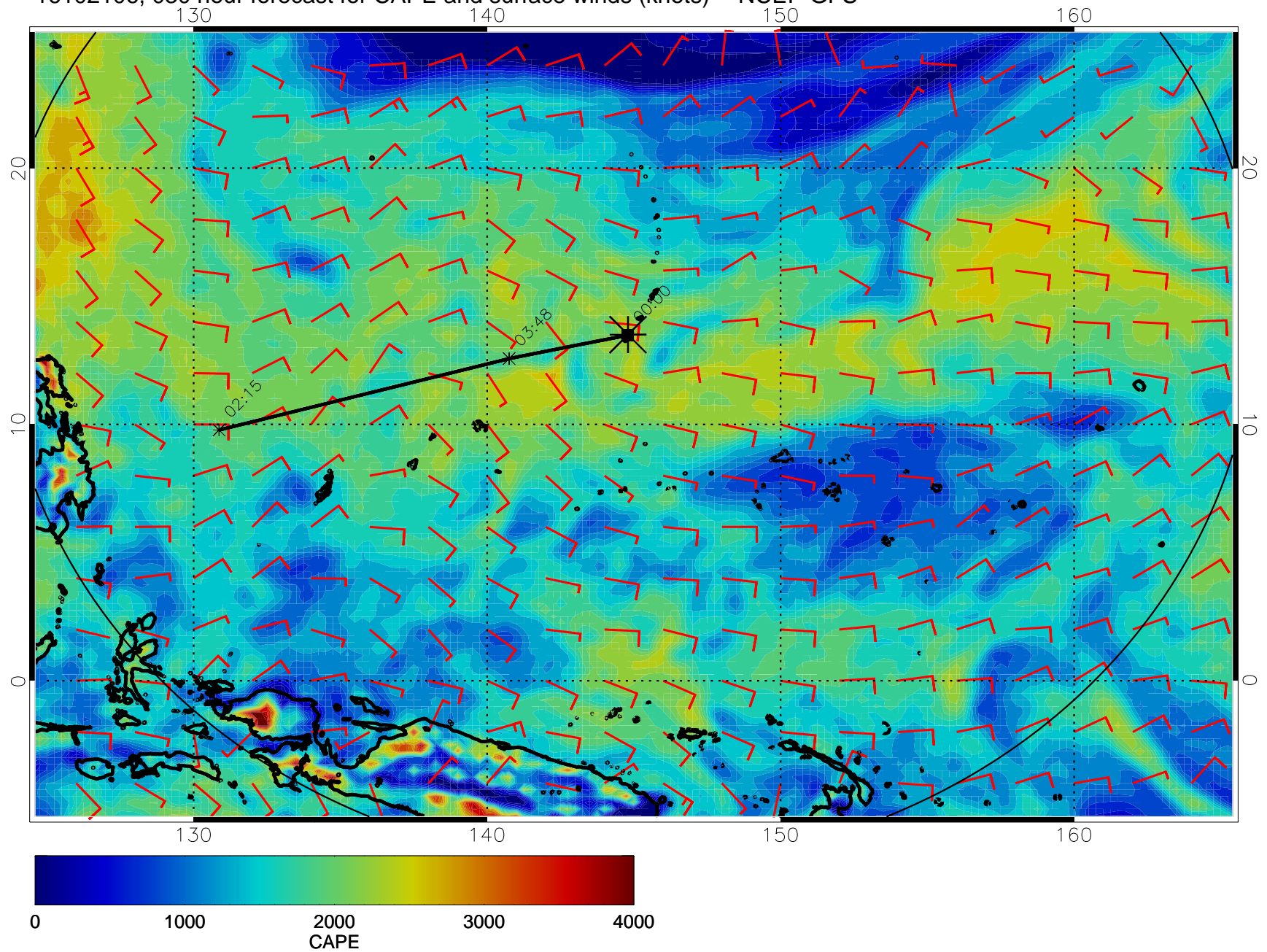
16102018, 018 hour forecast for CAPE and surface winds (knots) -- NCEP GFS



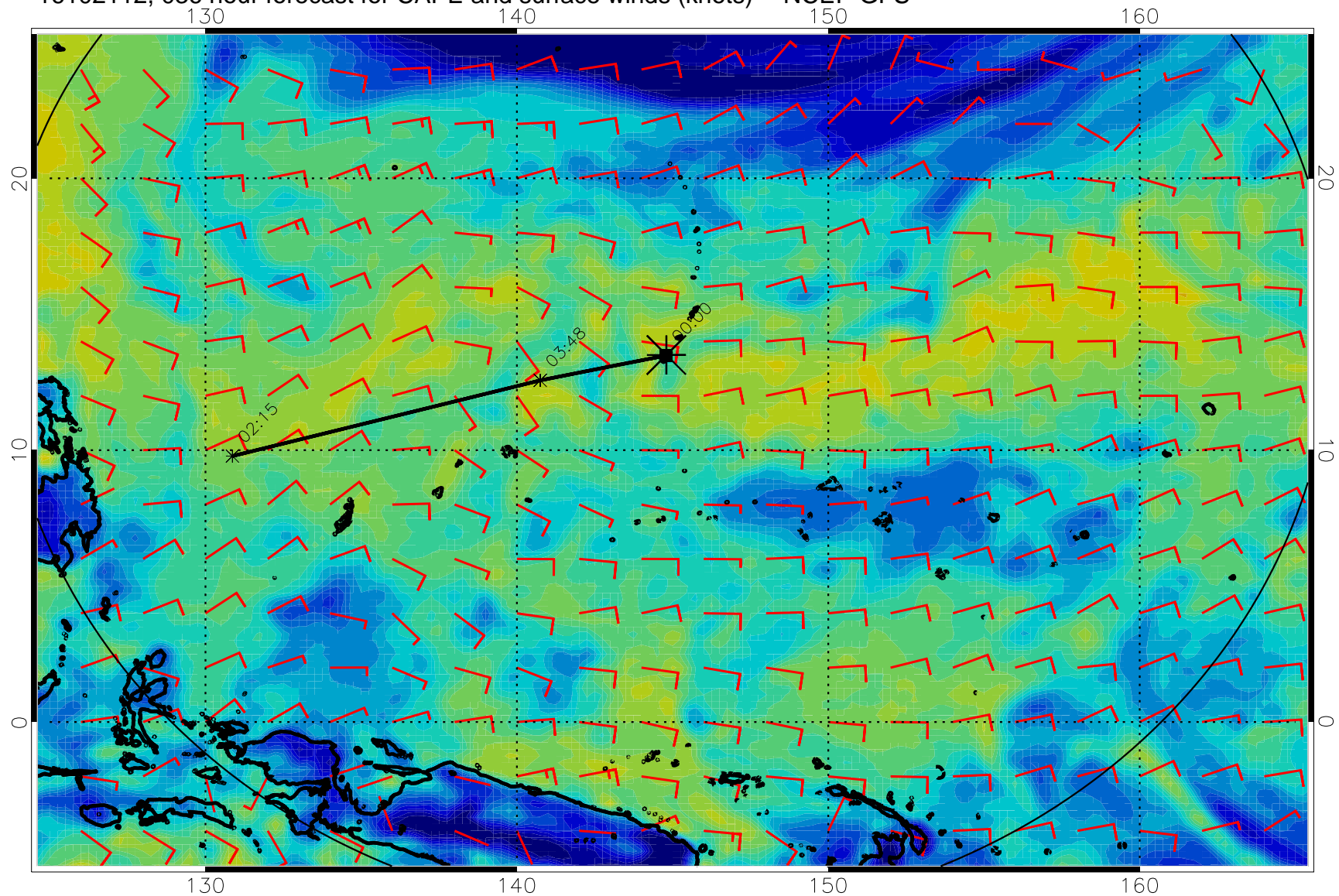
16102100, 024 hour forecast for CAPE and surface winds (knots) -- NCEP GFS



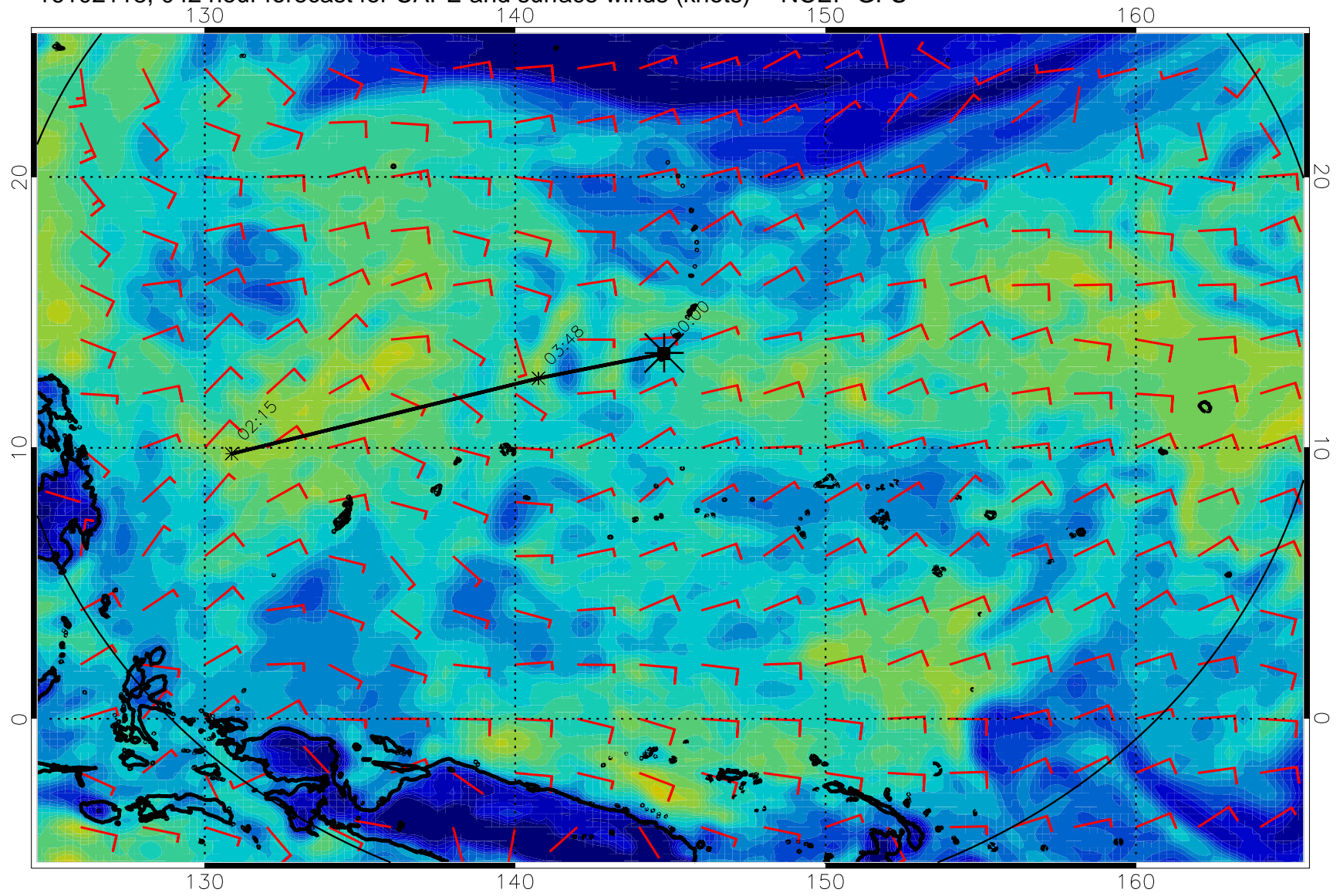
16102106, 030 hour forecast for CAPE and surface winds (knots) -- NCEP GFS



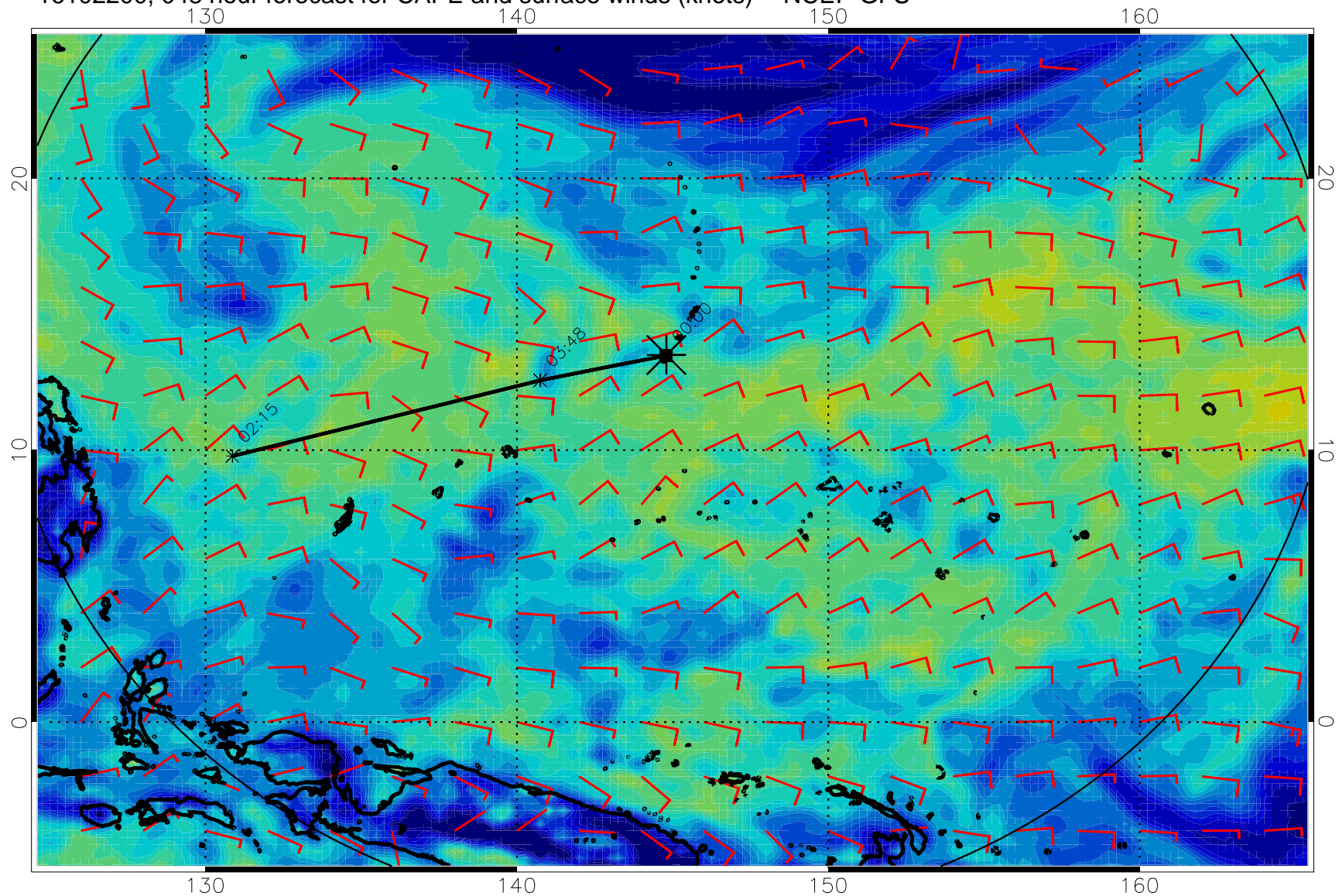
16102112, 036 hour forecast for CAPE and surface winds (knots) -- NCEP GFS



16102118, 042 hour forecast for CAPE and surface winds (knots) -- NCEP GFS

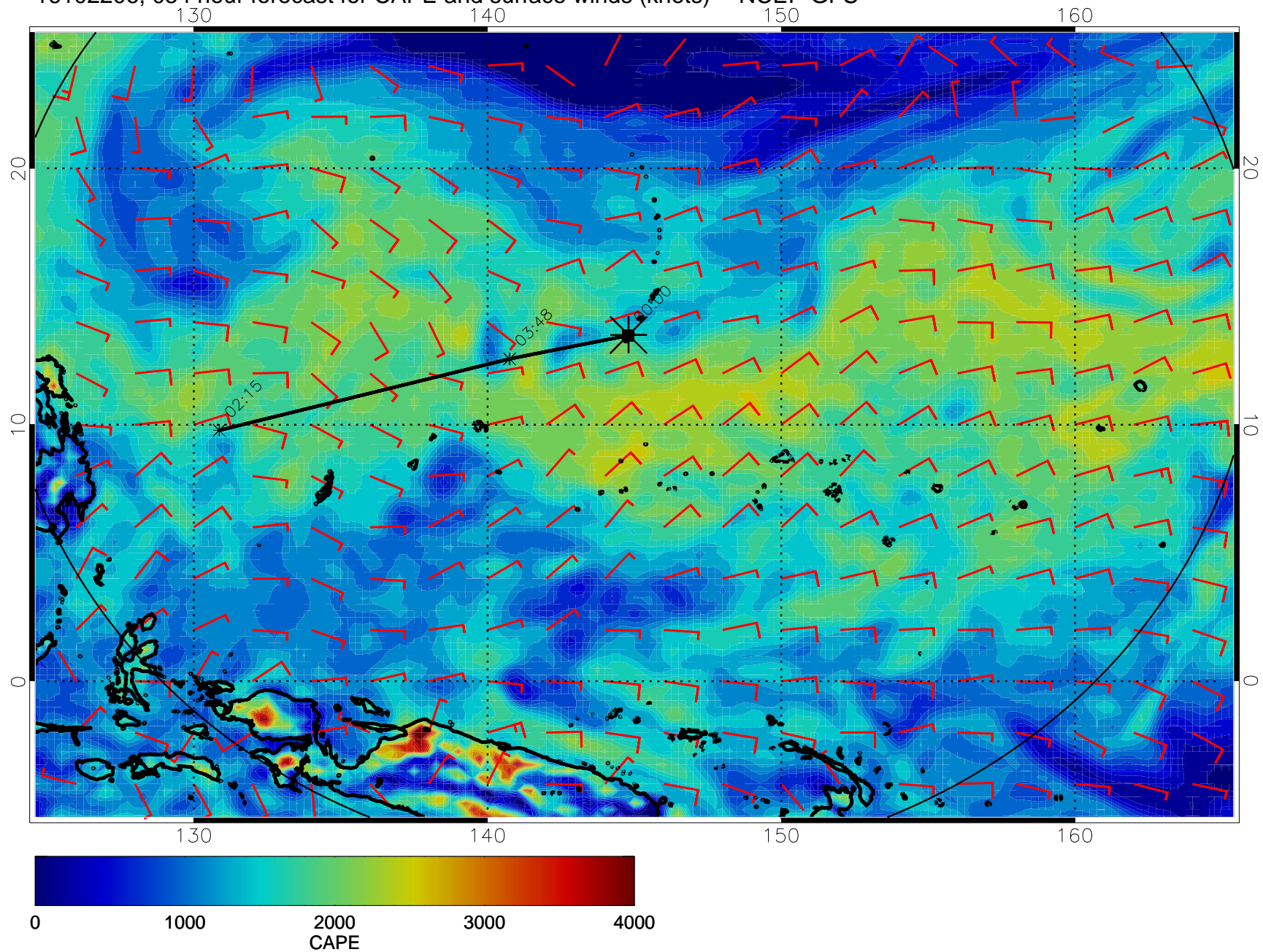


16102200, 048 hour forecast for CAPE and surface winds (knots) -- NCEP GFS

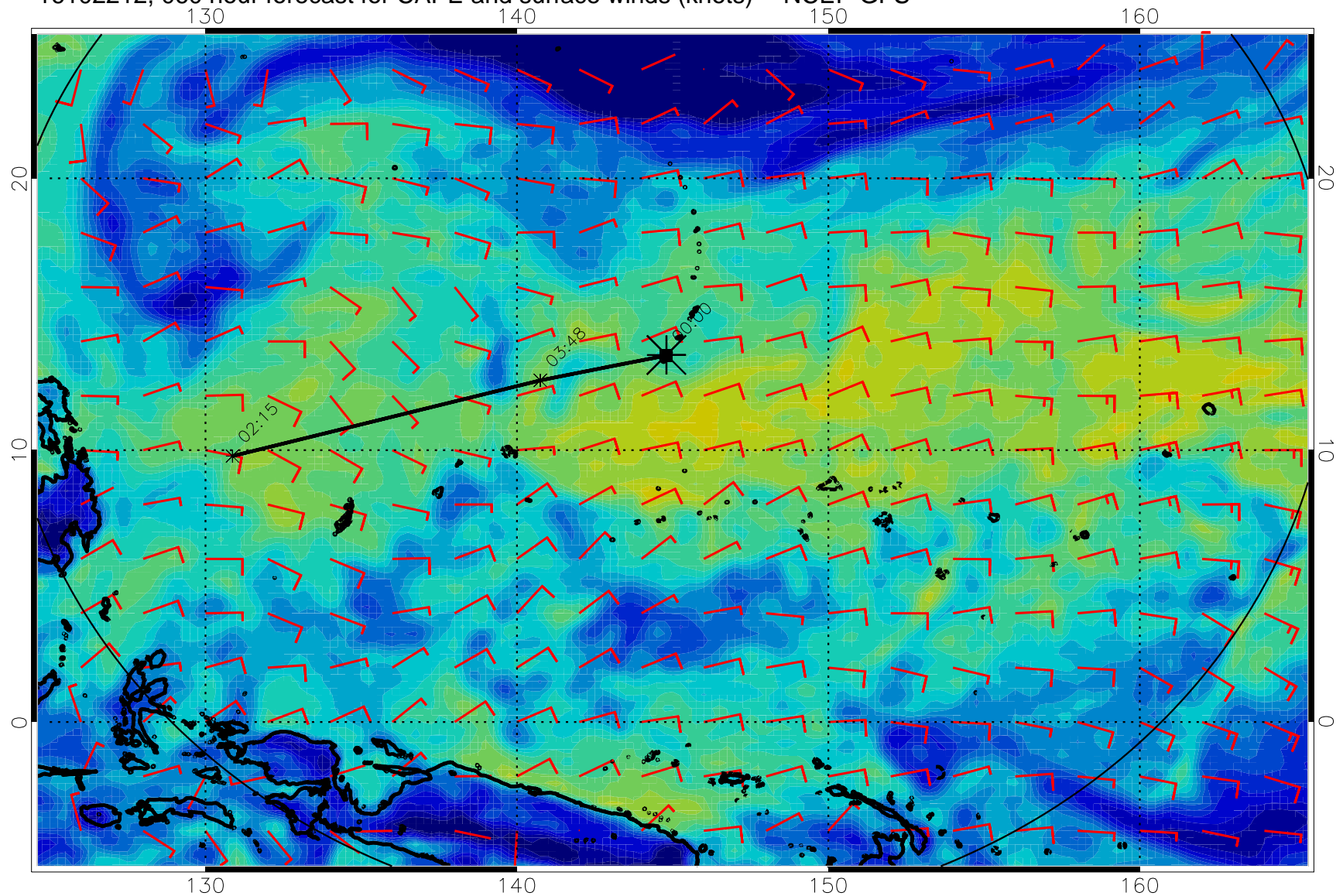




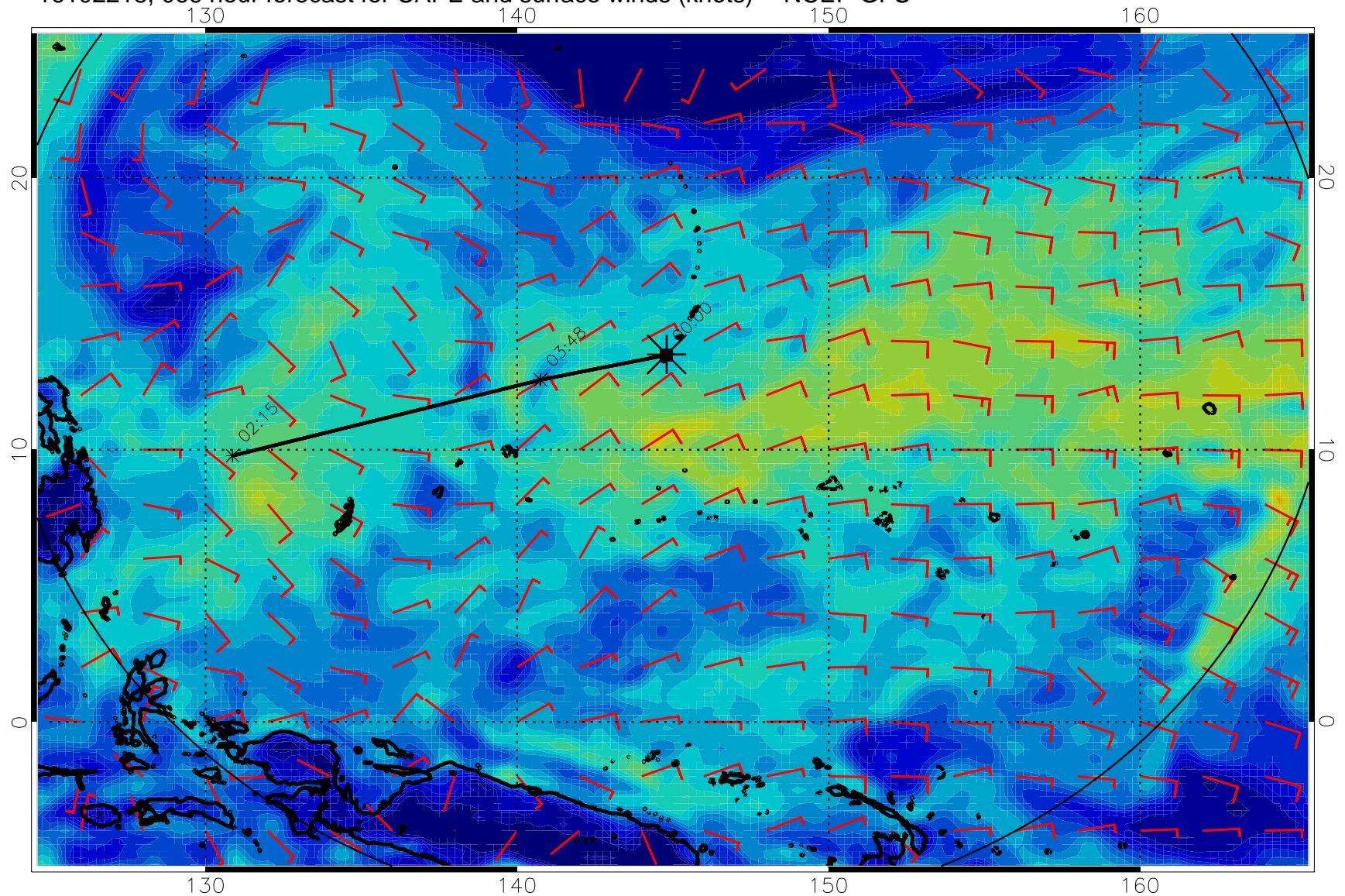
16102206, 054 hour forecast for CAPE and surface winds (knots) -- NCEP GFS



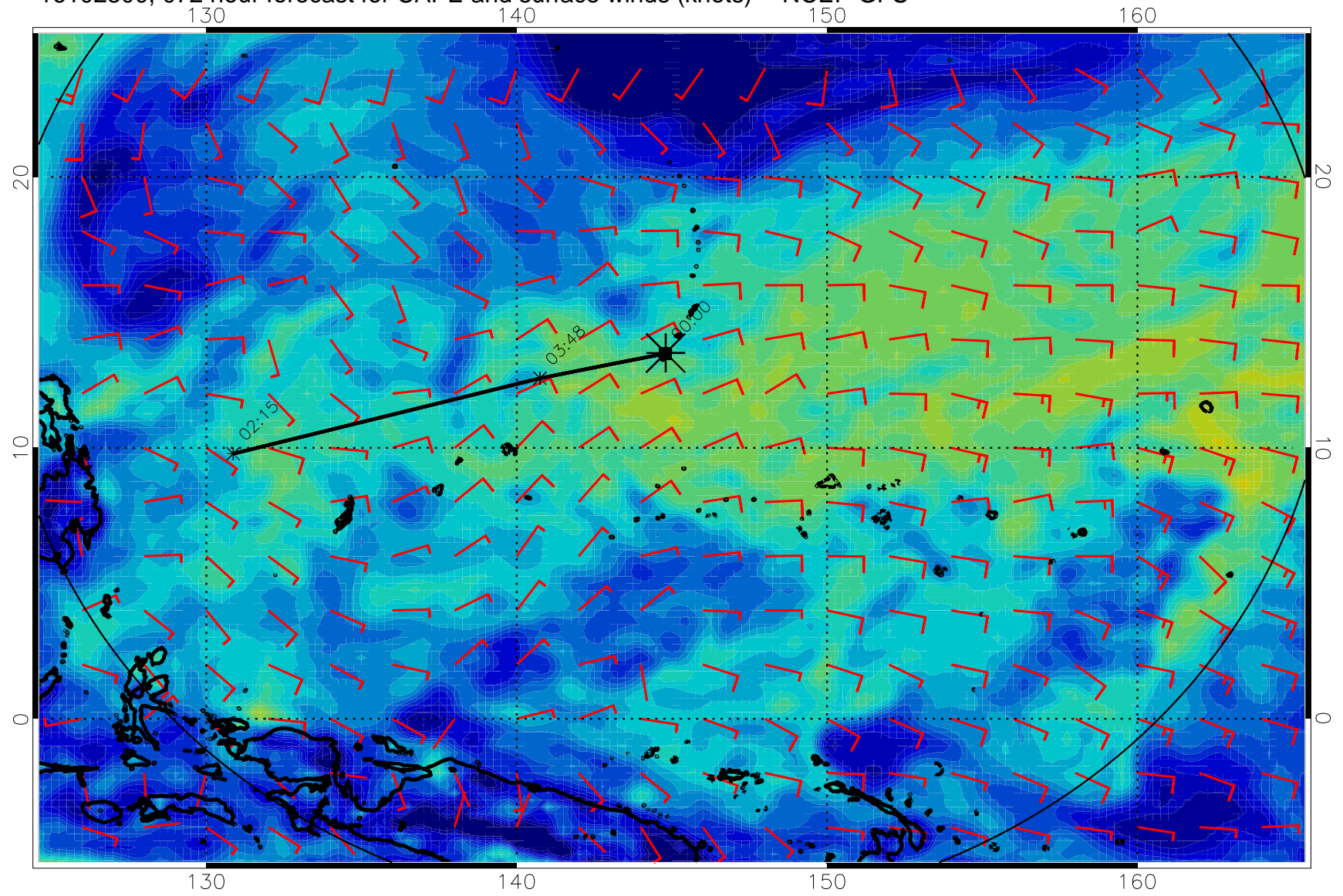
16102212, 060 hour forecast for CAPE and surface winds (knots) -- NCEP GFS



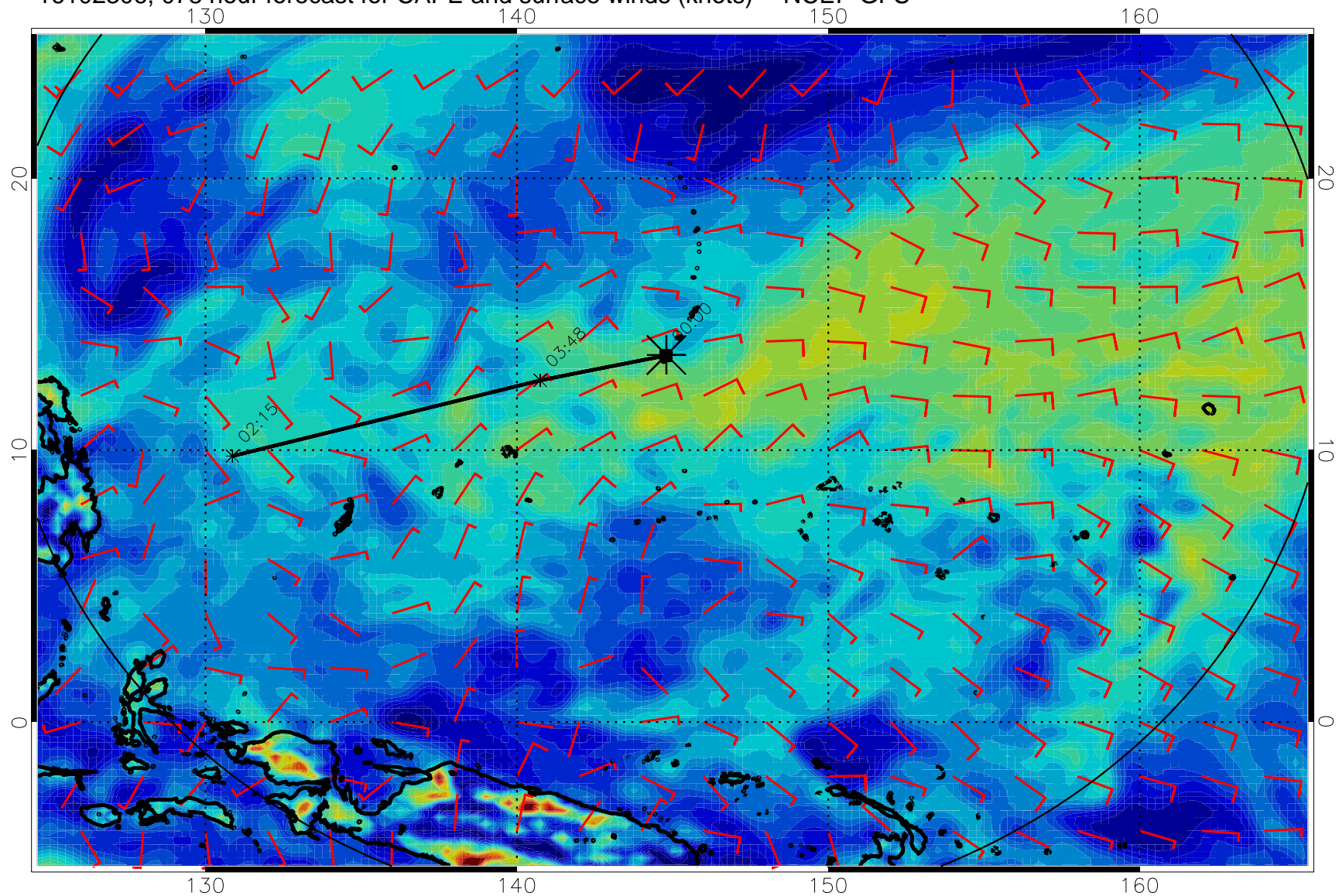
16102218, 066 hour forecast for CAPE and surface winds (knots) -- NCEP GFS



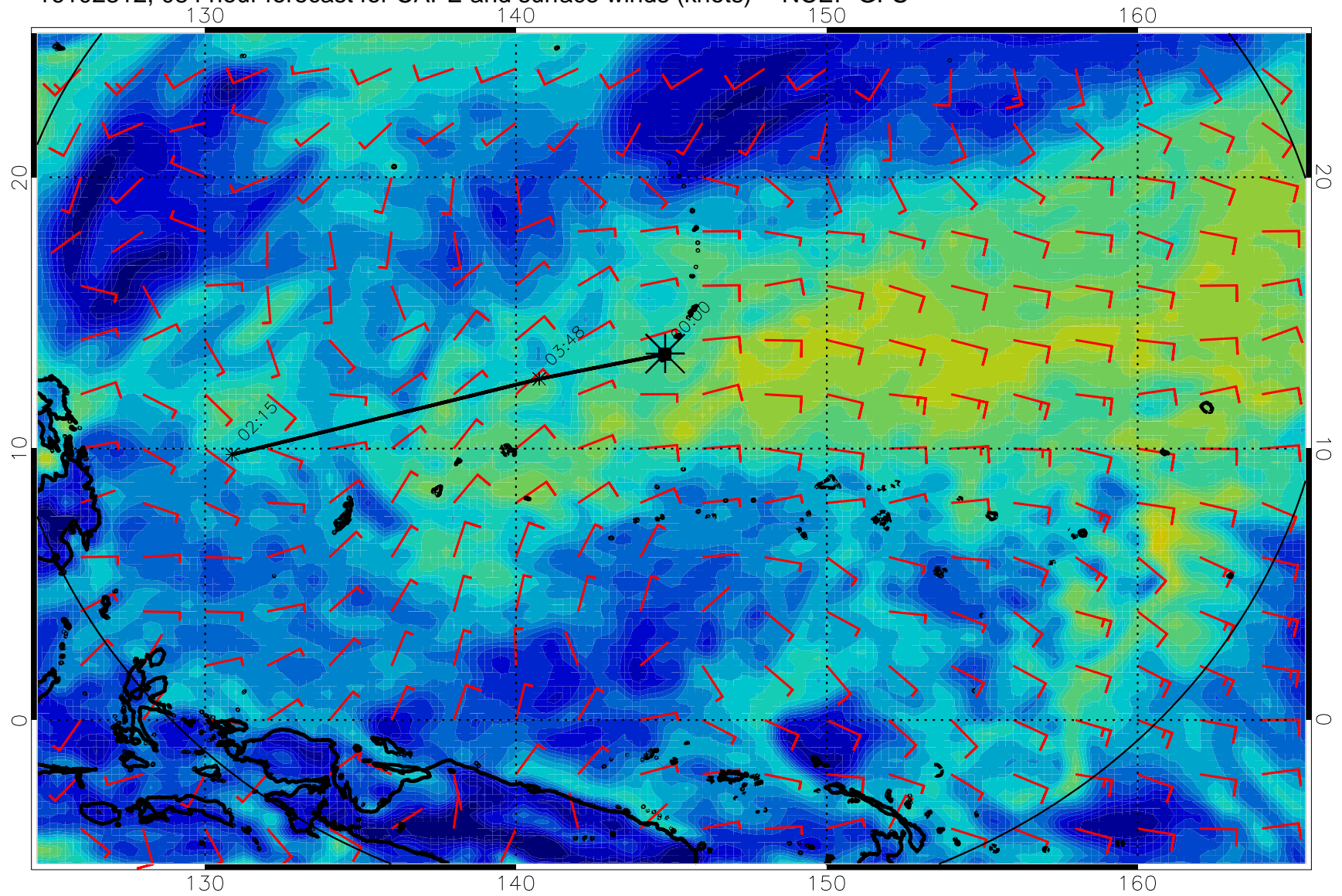
16102300, 072 hour forecast for CAPE and surface winds (knots) -- NCEP GFS



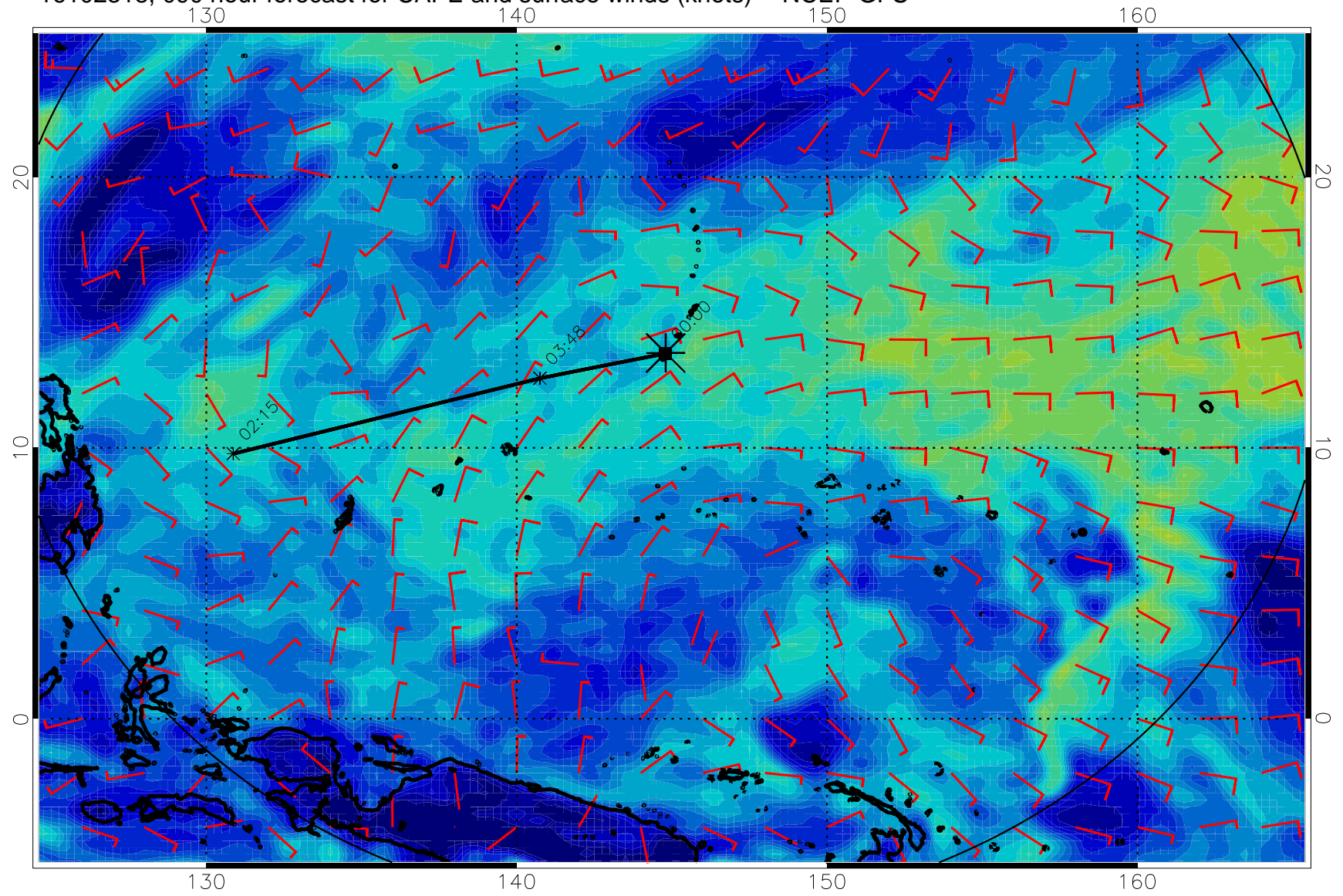
16102306, 078 hour forecast for CAPE and surface winds (knots) -- NCEP GFS



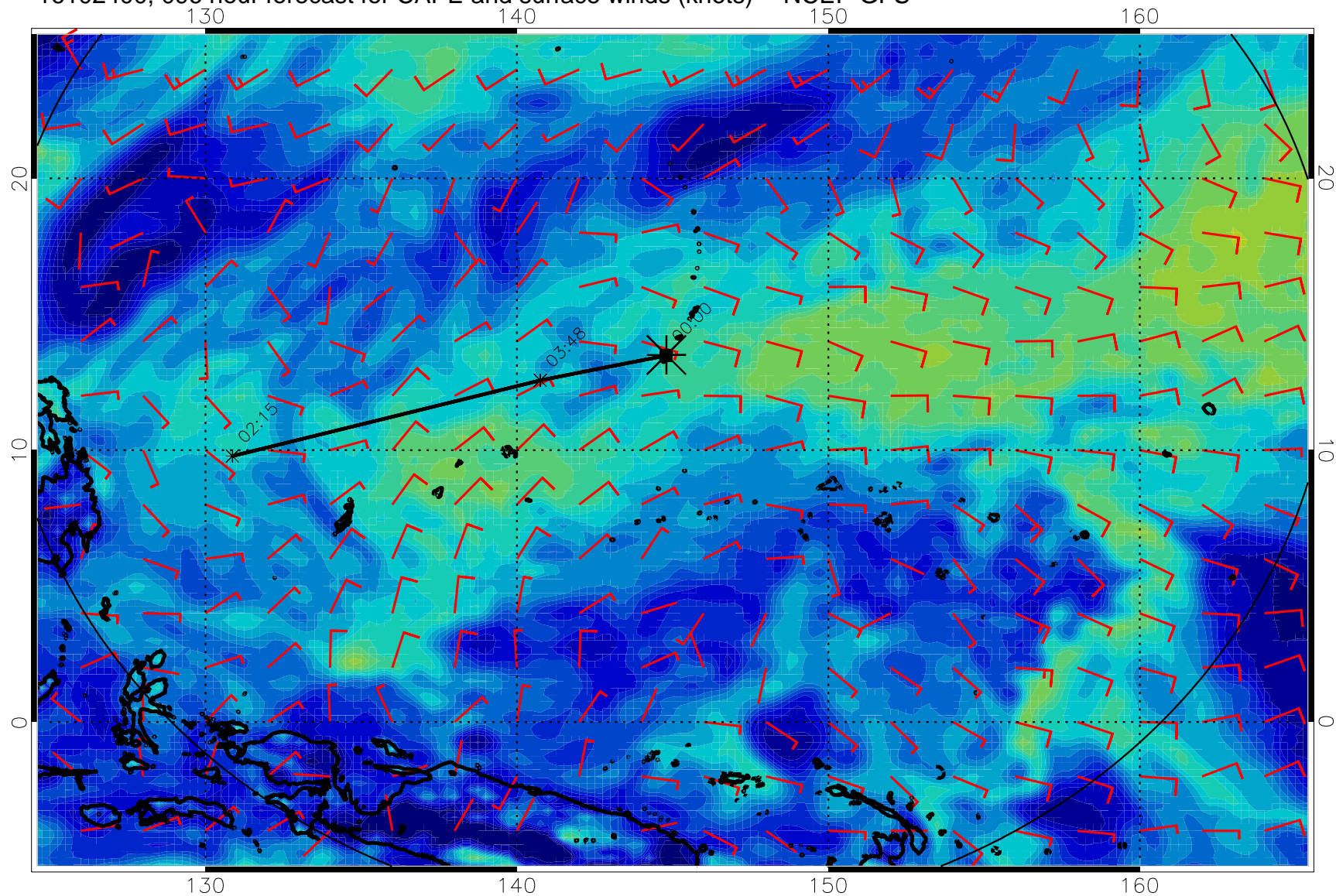
16102312, 084 hour forecast for CAPE and surface winds (knots) -- NCEP GFS



16102318, 090 hour forecast for CAPE and surface winds (knots) -- NCEP GFS

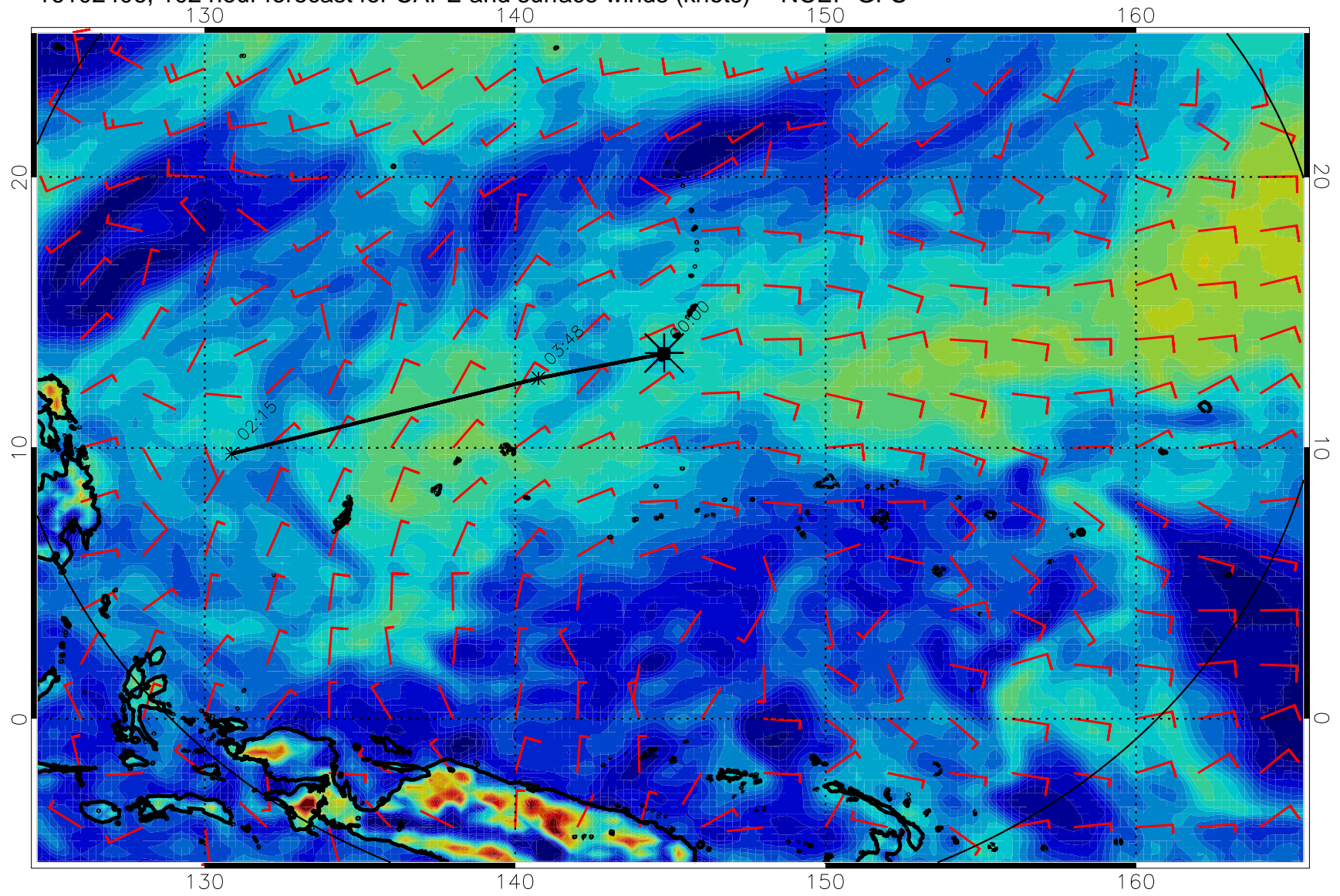


16102400, 096 hour forecast for CAPE and surface winds (knots) -- NCEP GFS

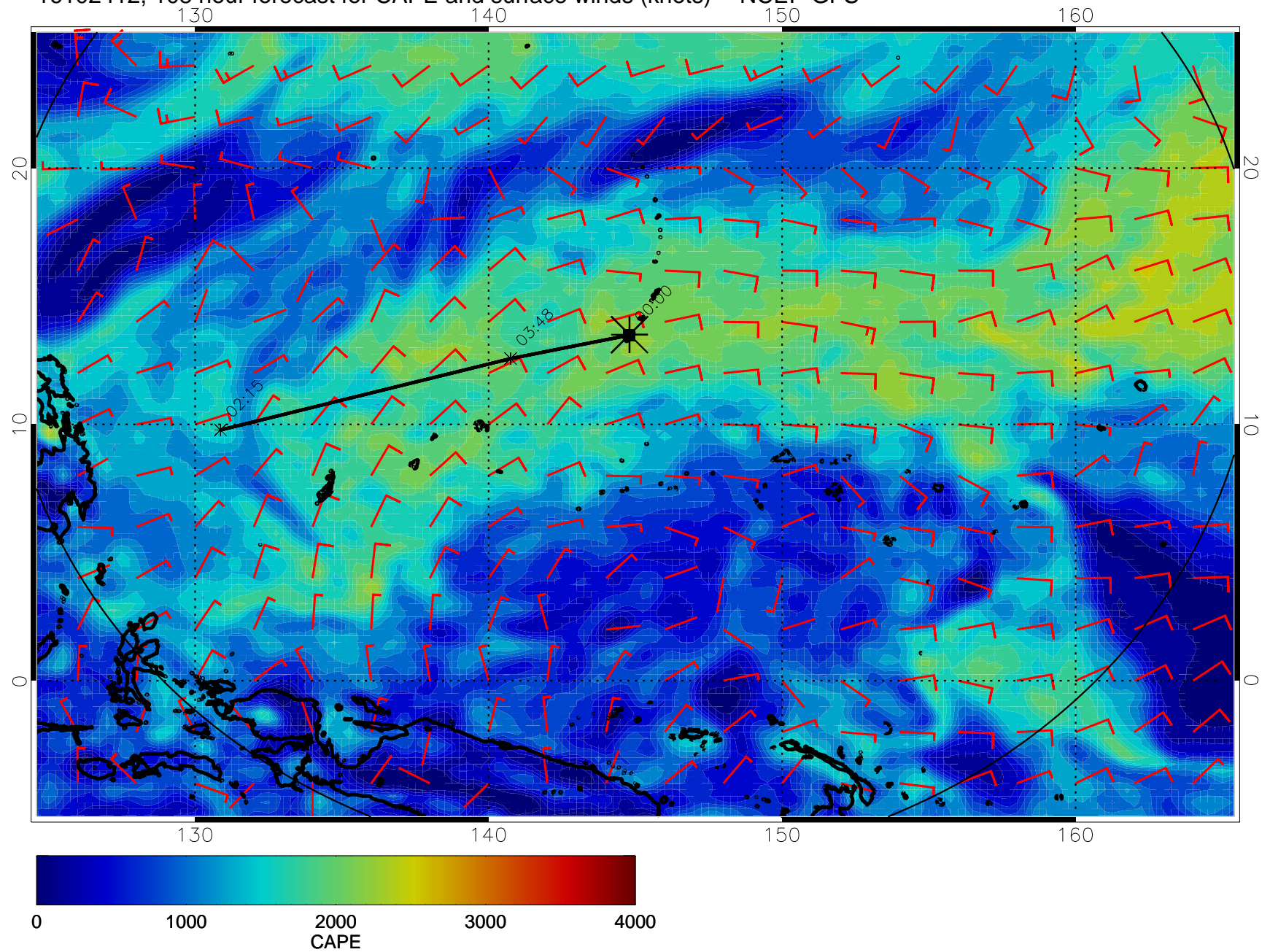




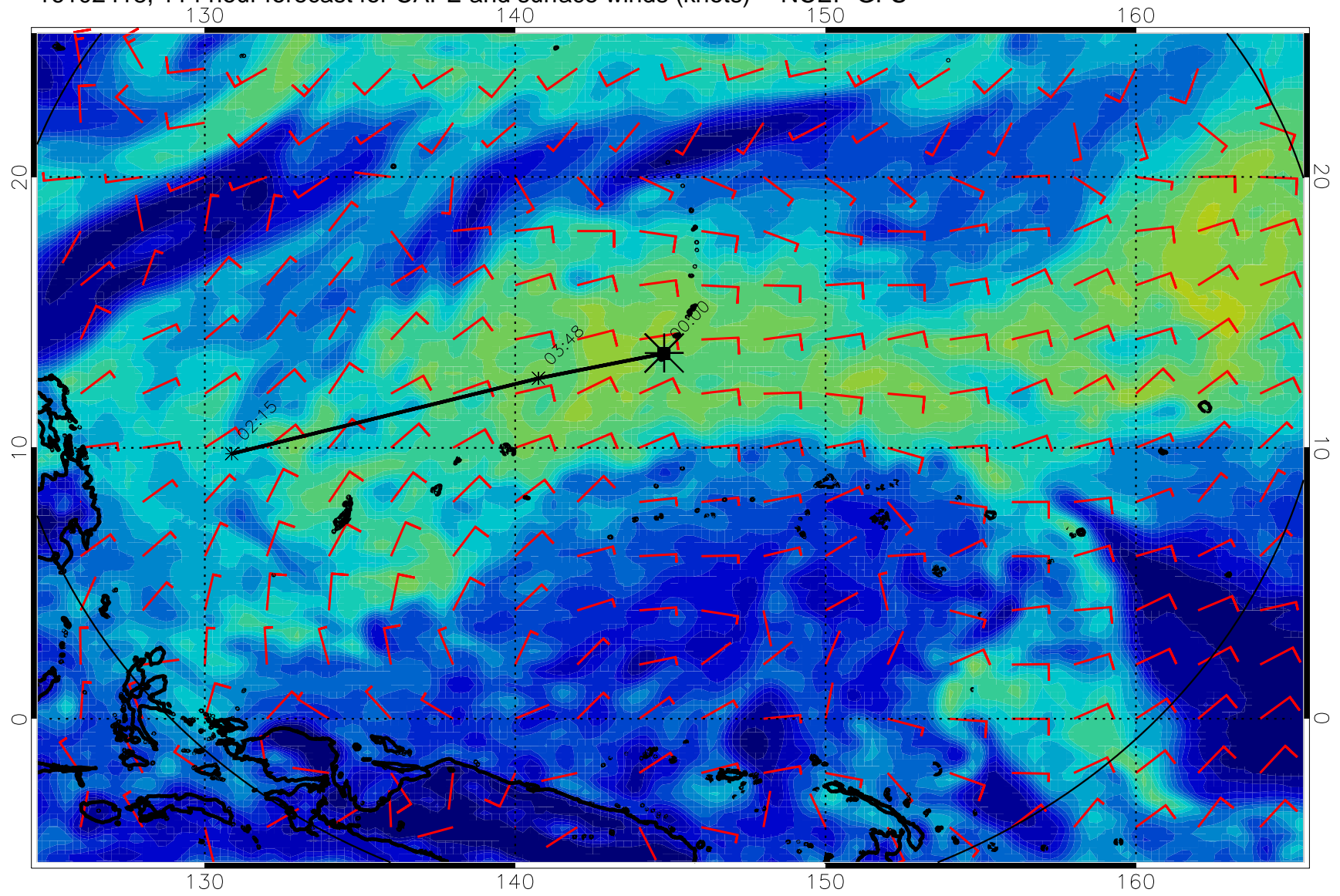
16102406, 102 hour forecast for CAPE and surface winds (knots) -- NCEP GFS



16102412, 108 hour forecast for CAPE and surface winds (knots) -- NCEP GFS



16102418, 114 hour forecast for CAPE and surface winds (knots) -- NCEP GFS



16102500, 120 hour forecast for CAPE and surface winds (knots) -- NCEP GFS

