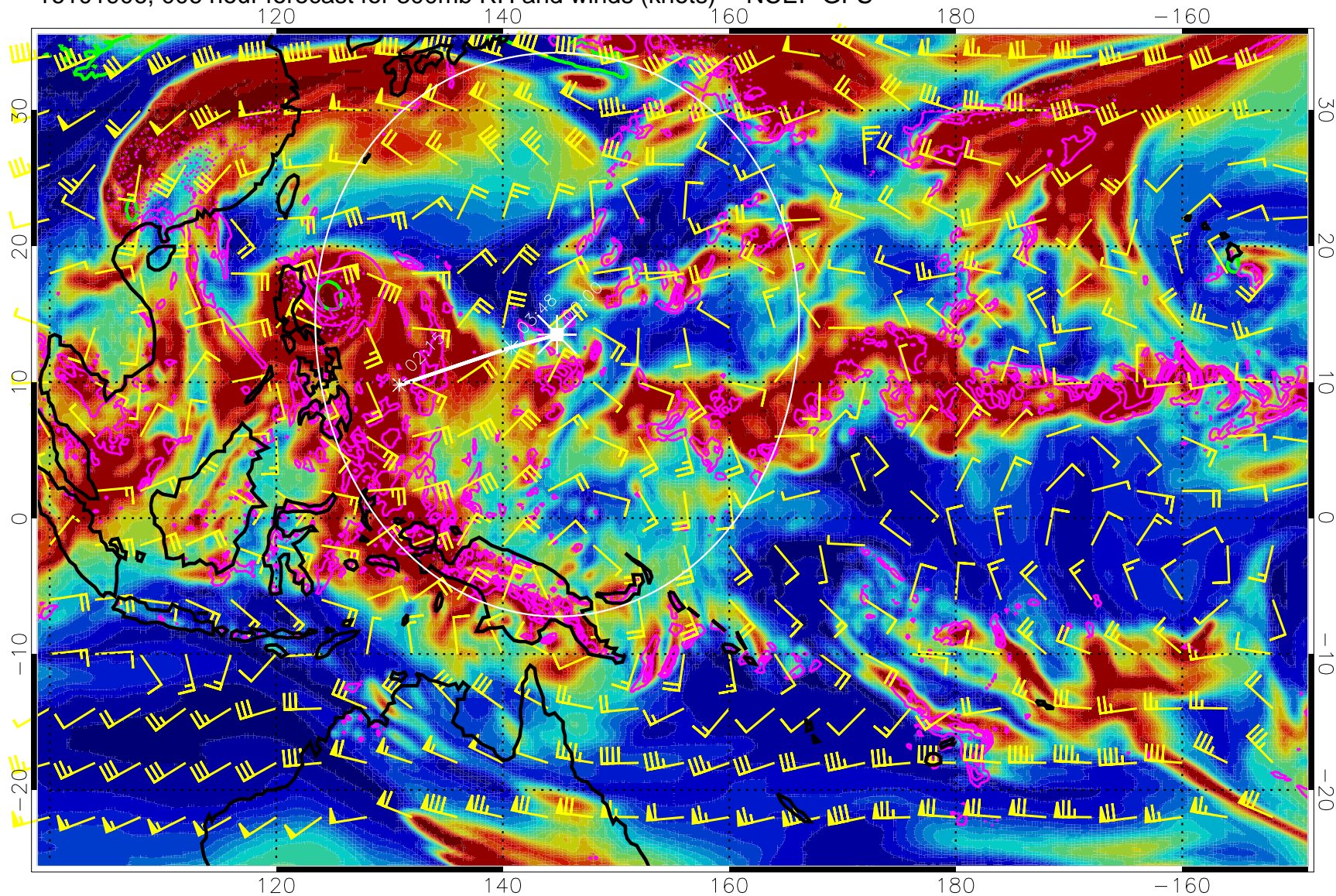


16101906, 006 hour forecast for 300mb RH and winds (knots) -- NCEP GFS

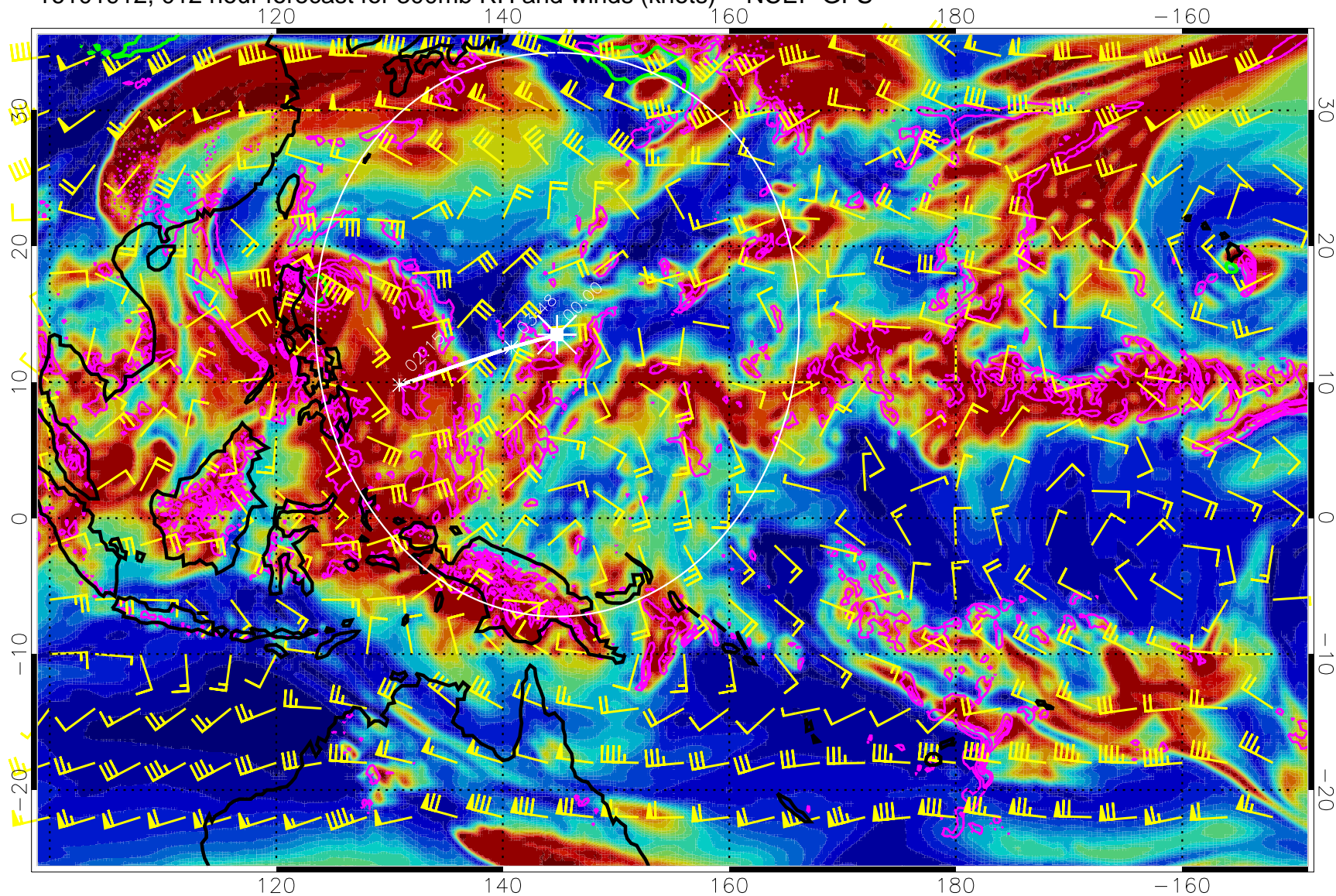


Precip (tot dot, conv sol) mm/day 40 mm/day contours, min 20

EPV Tropopause (2 PVU) Position

Range ring of 2304 km

16101912, 012 hour forecast for 300mb RH and winds (knots) -- NCEP GFS

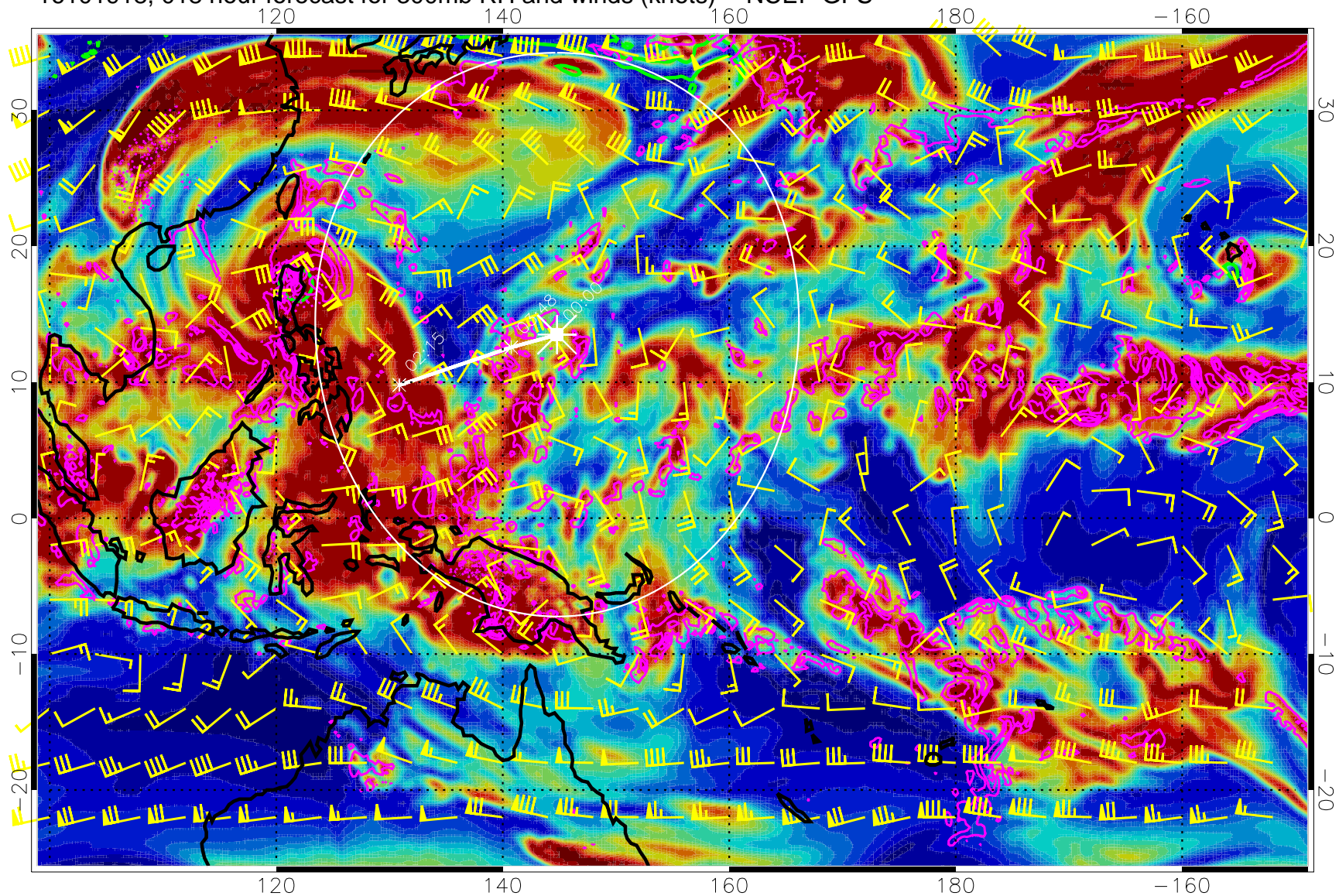


Precip (tot dot, conv sol) mm/day 40 mm/day contours, min 20

EPV Tropopause (2 PVU) Position

Range ring of 2304 km

16101918, 018 hour forecast for 300mb RH and winds (knots) -- NCEP GFS

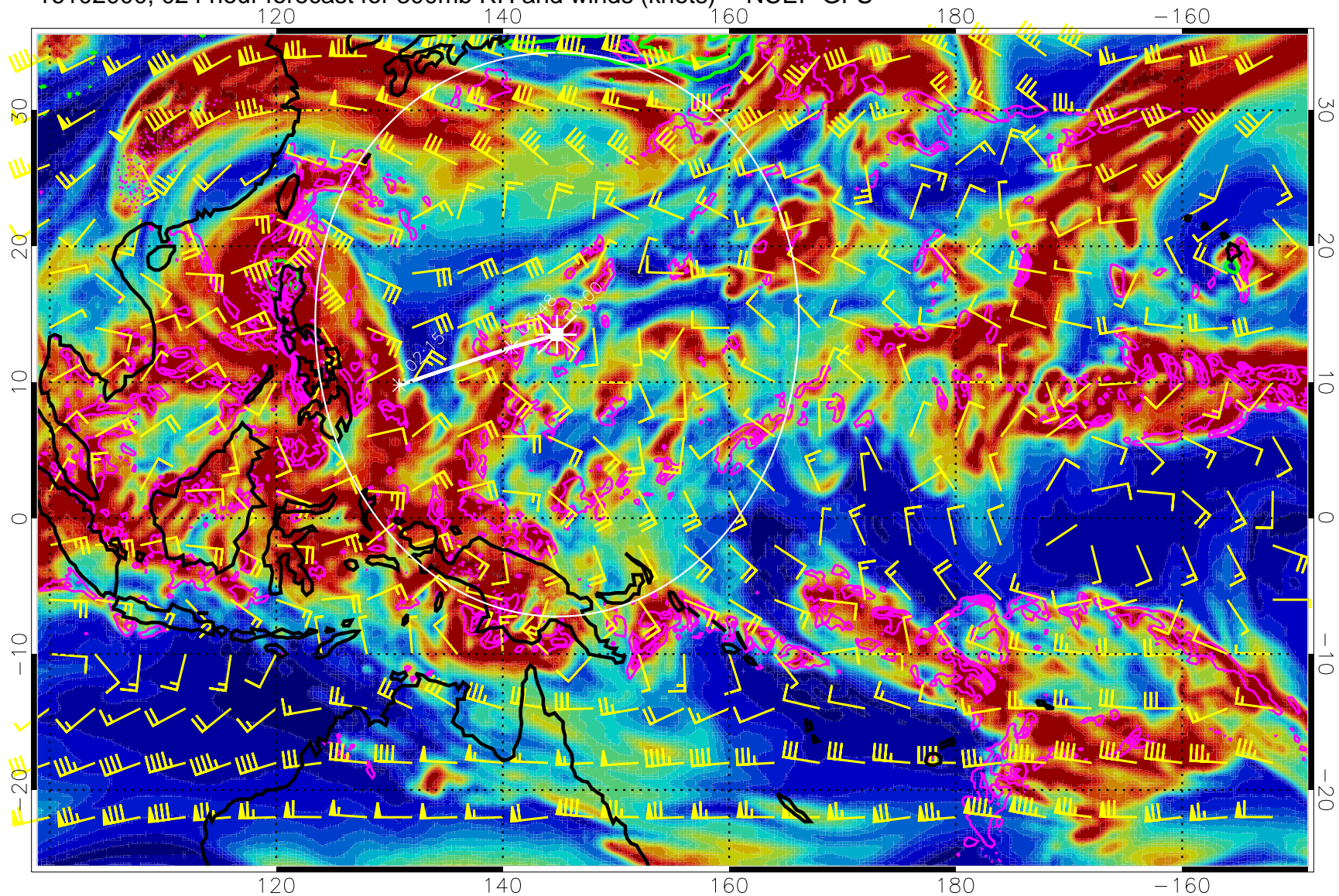


Precip (tot dot, conv sol) mm/day 40 mm/day contours, min 20

EPV Tropopause (2 PVU) Position

Range ring of 2304 km

16102000, 024 hour forecast for 300mb RH and winds (knots) -- NCEP GFS

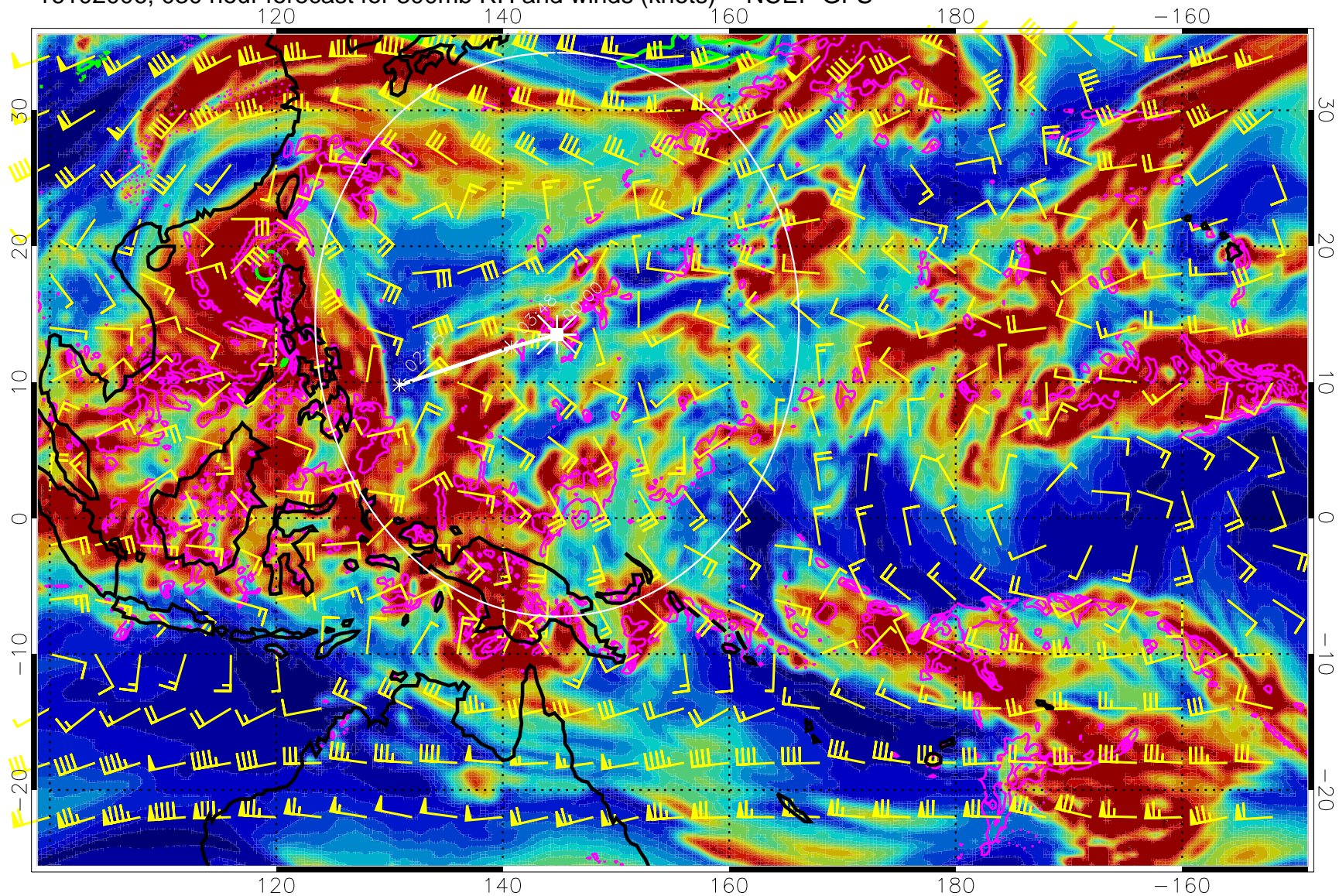


Precip (tot dot, conv sol) mm/day 40 mm/day contours, min 20

EPV Tropopause (2 PVU) Position

Range ring of 2304 km

16102006, 030 hour forecast for 300mb RH and winds (knots) -- NCEP GFS

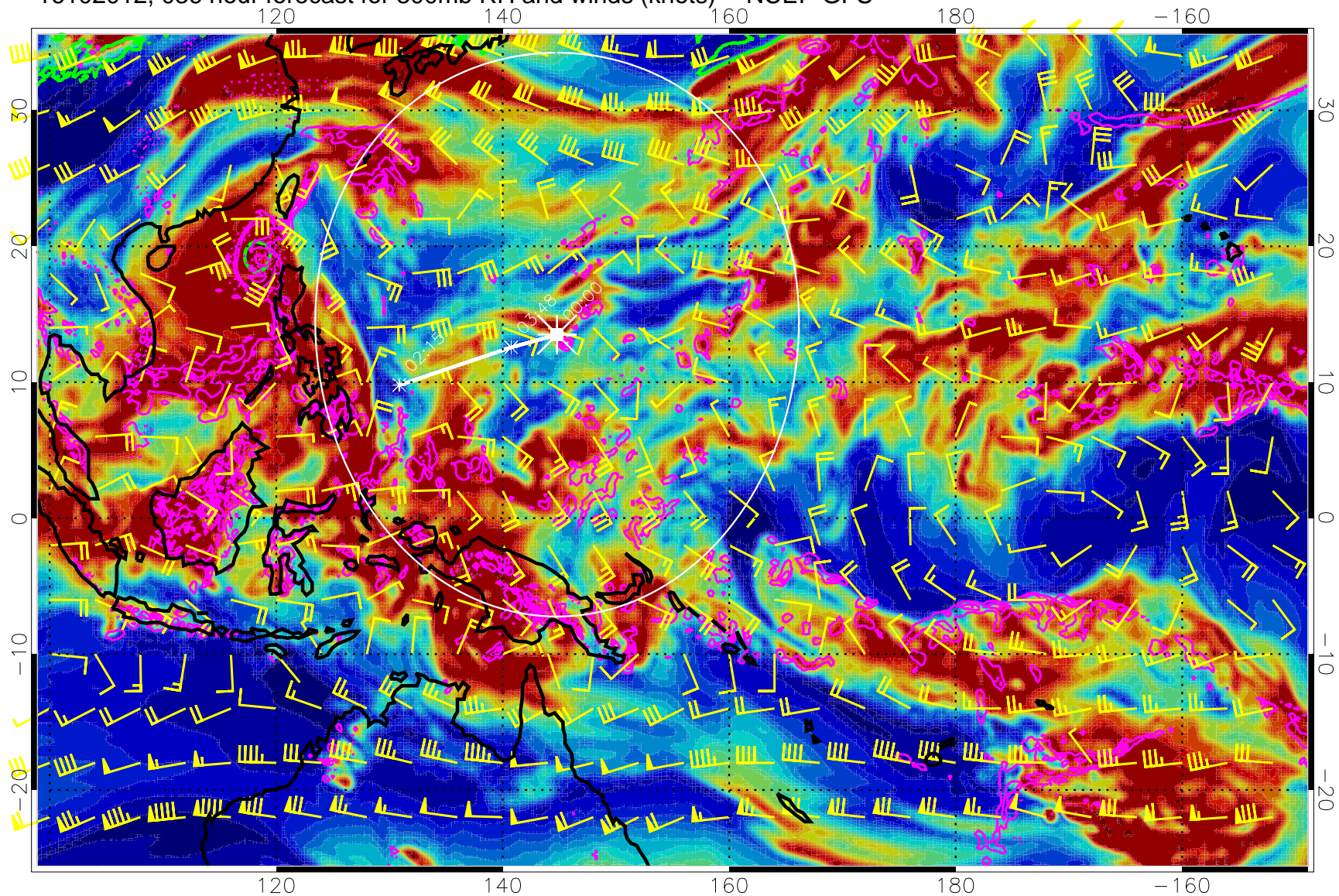


Precip (tot dot, conv sol) mm/day 40 mm/day contours, min 20

EPV Tropopause (2 PVU) Position

Range ring of 2304 km

16102012, 036 hour forecast for 300mb RH and winds (knots) -- NCEP GFS

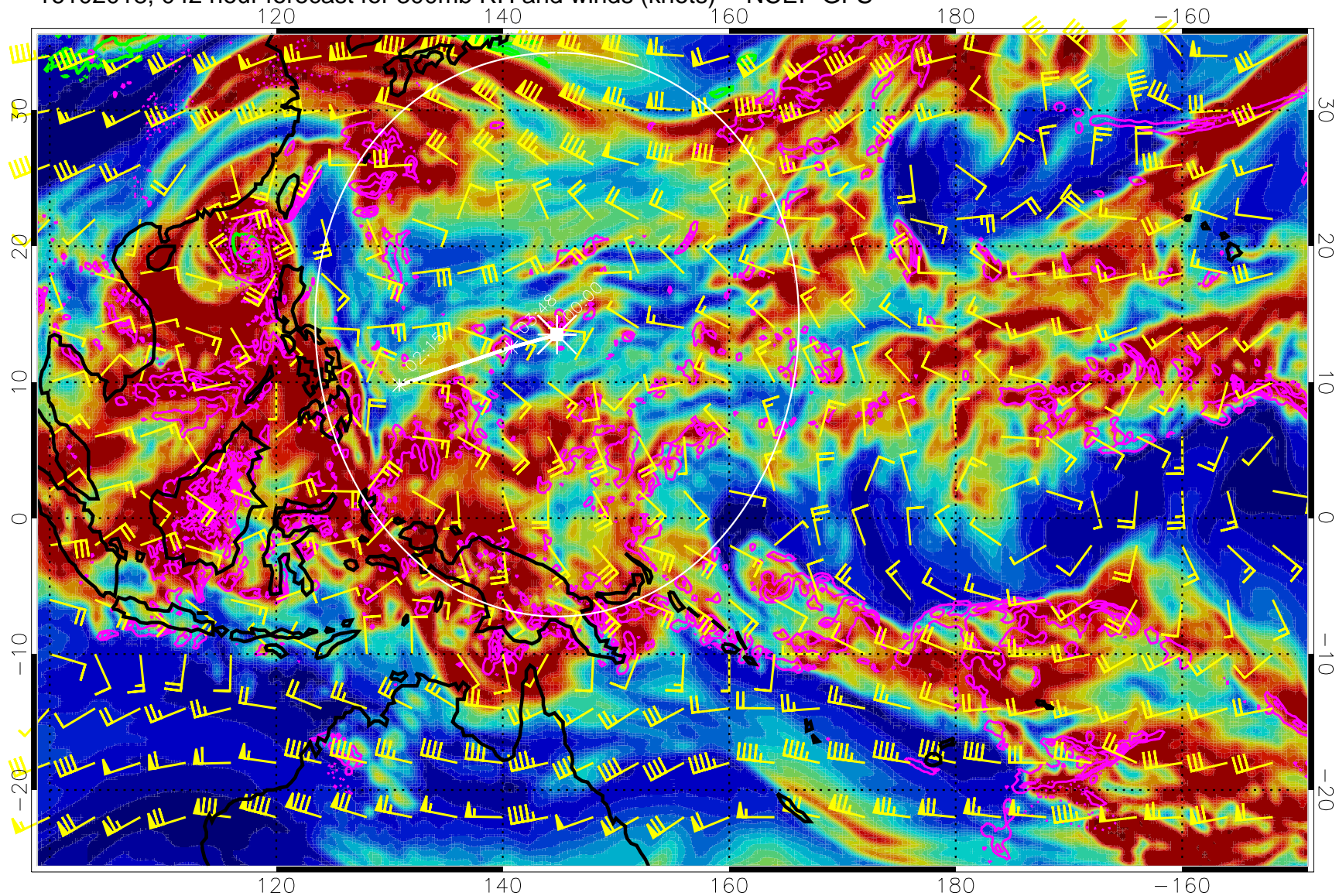


Precip (tot dot, conv sol) mm/day 40 mm/day contours, min 20

EPV Tropopause (2 PVU) Position

Range ring of 2304 km

16102018, 042 hour forecast for 300mb RH and winds (knots) -- NCEP GFS

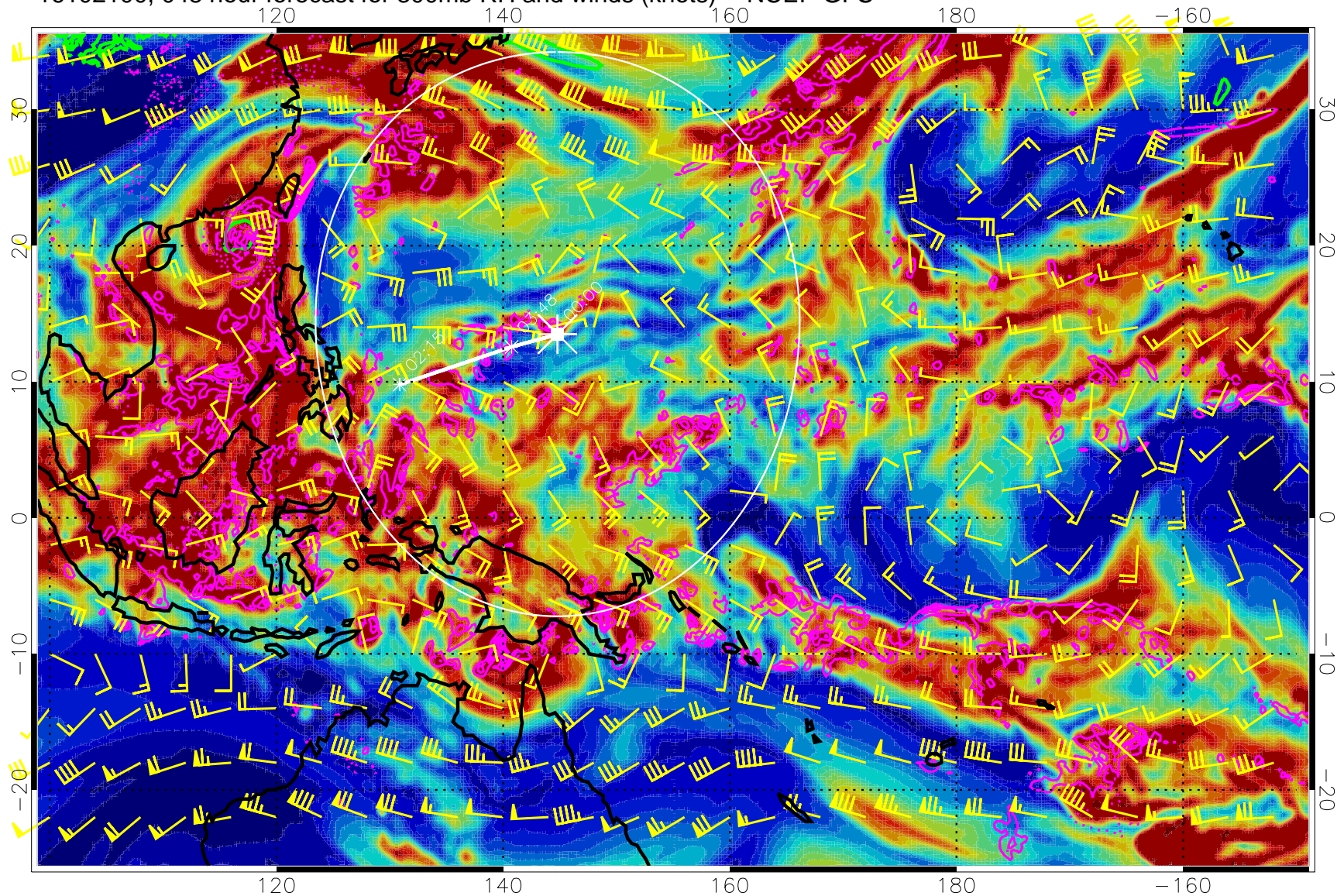


Precip (tot dot, conv sol) mm/day 40 mm/day contours, min 20

EPV Tropopause (2 PVU) Position

Range ring of 2304 km

16102100, 048 hour forecast for 300mb RH and winds (knots) -- NCEP GFS

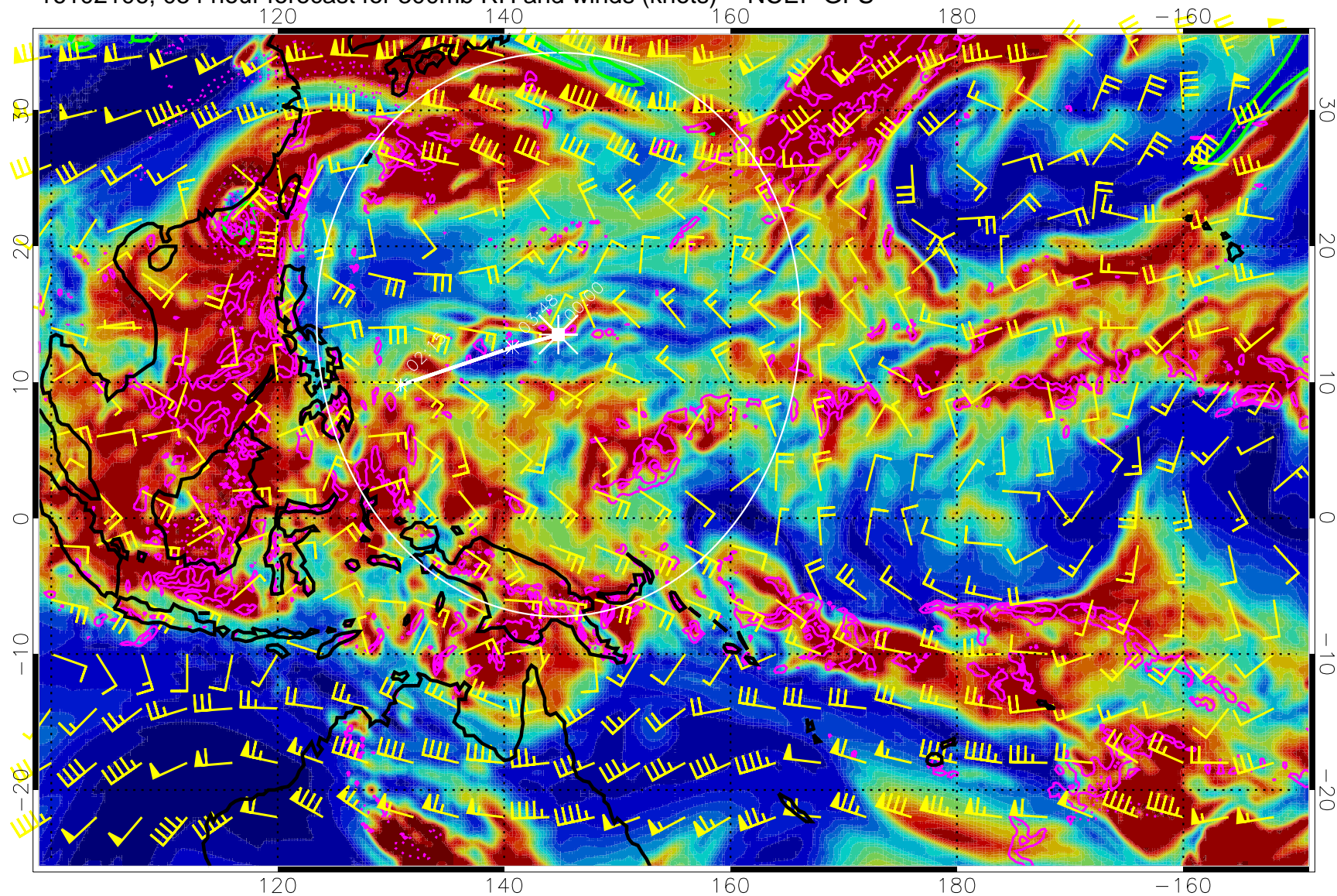


Precip (tot dot, conv sol) mm/day 40 mm/day contours, min 20

EPV Tropopause (2 PVU) Position

Range ring of 2304 km

16102106, 054 hour forecast for 300mb RH and winds (knots) -- NCEP GFS

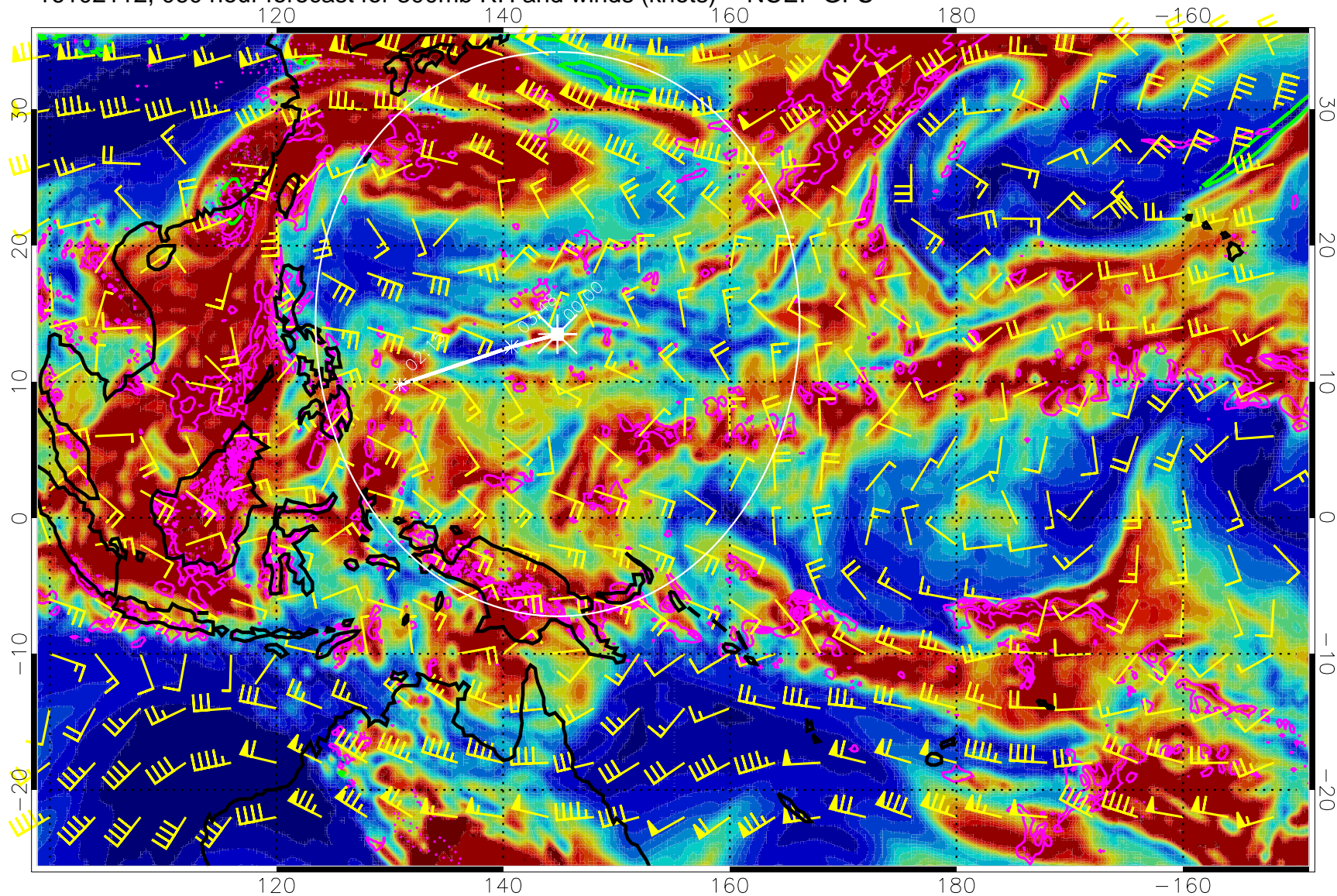


Precip (tot dot, conv sol) mm/day 40 mm/day contours, min 20

EPV Tropopause (2 PVU) Position

Range ring of 2304 km

16102112, 060 hour forecast for 300mb RH and winds (knots) -- NCEP GFS

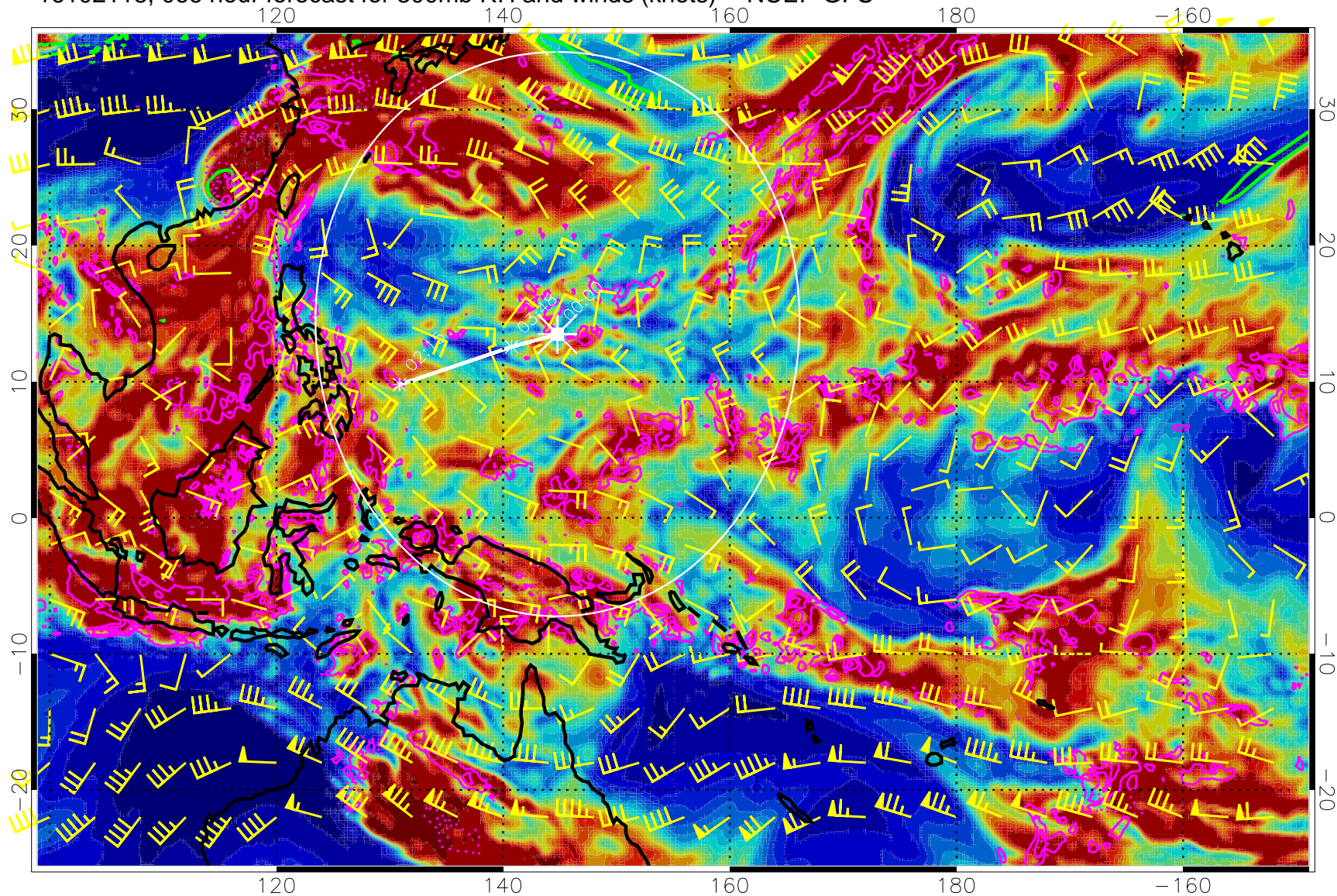


Precip (tot dot, conv sol) mm/day 40 mm/day contours, min 20

EPV Tropopause (2 PVU) Position

Range ring of 2304 km

16102118, 066 hour forecast for 300mb RH and winds (knots) -- NCEP GFS

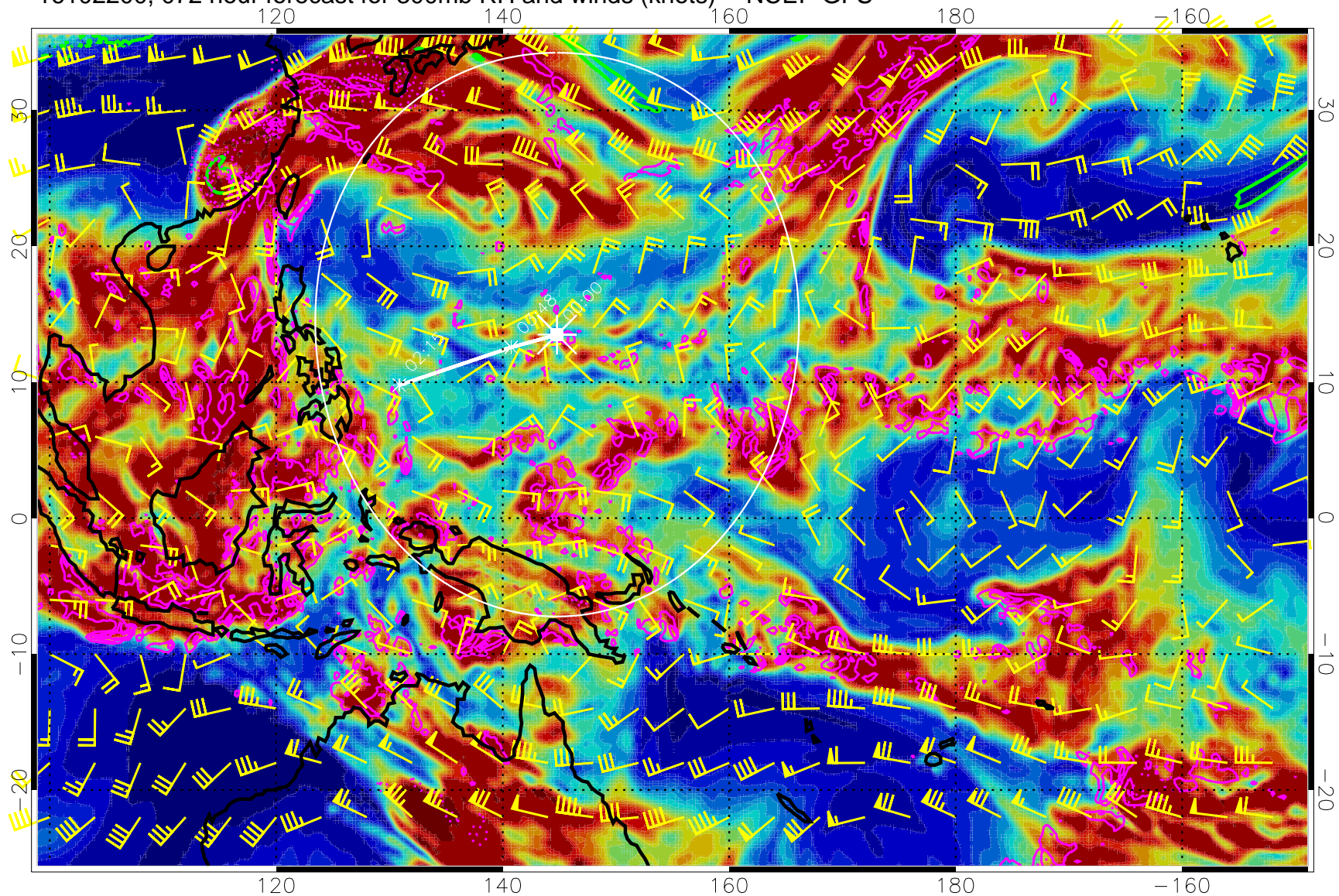


Precip (tot dot, conv sol) mm/day 40 mm/day contours, min 20

EPV Tropopause (2 PVU) Position

Range ring of 2304 km

16102200, 072 hour forecast for 300mb RH and winds (knots) -- NCEP GFS

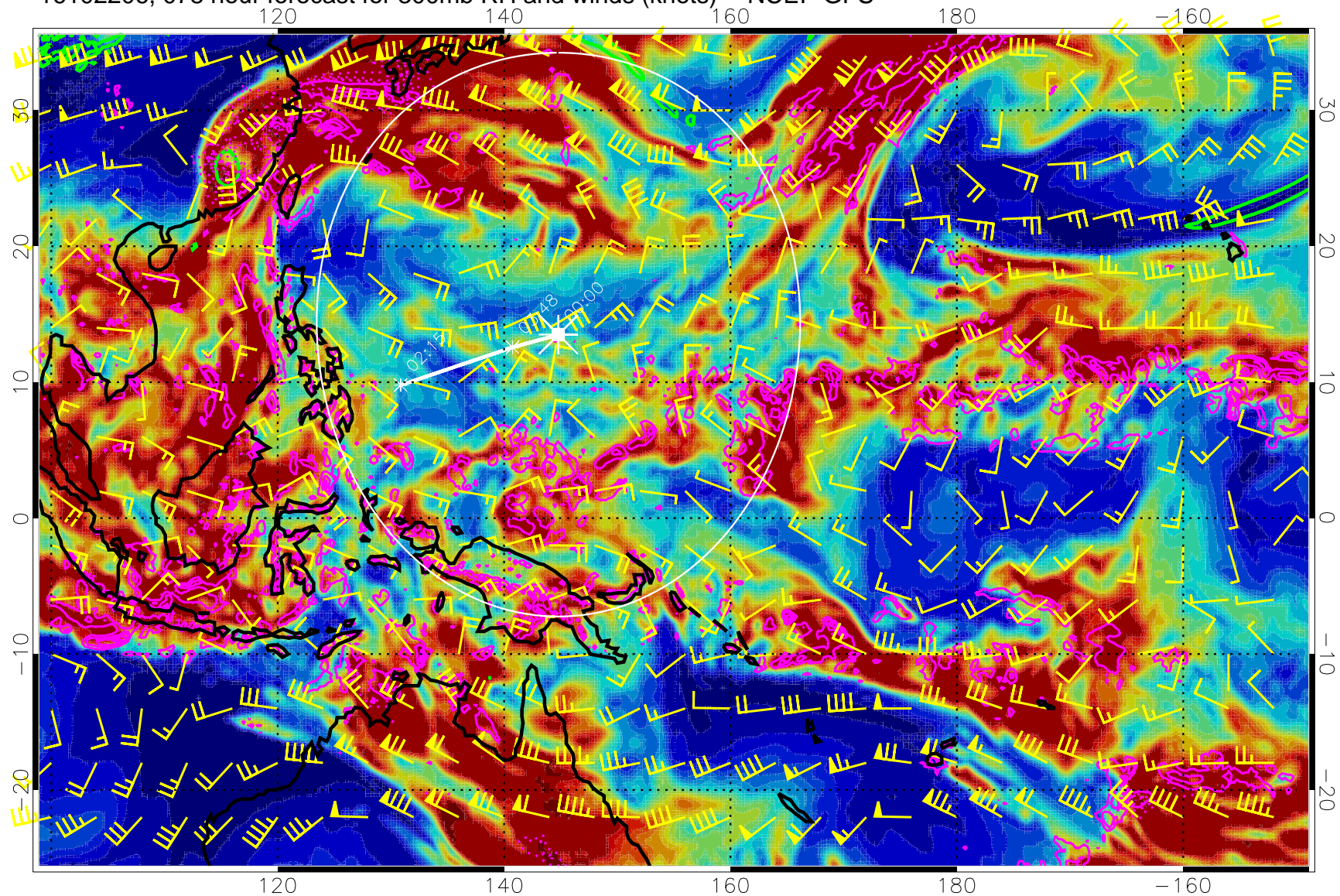


Precip (tot dot, conv sol) mm/day 40 mm/day contours, min 20

EPV Tropopause (2 PVU) Position

Range ring of 2304 km

16102206, 078 hour forecast for 300mb RH and winds (knots) -- NCEP GFS

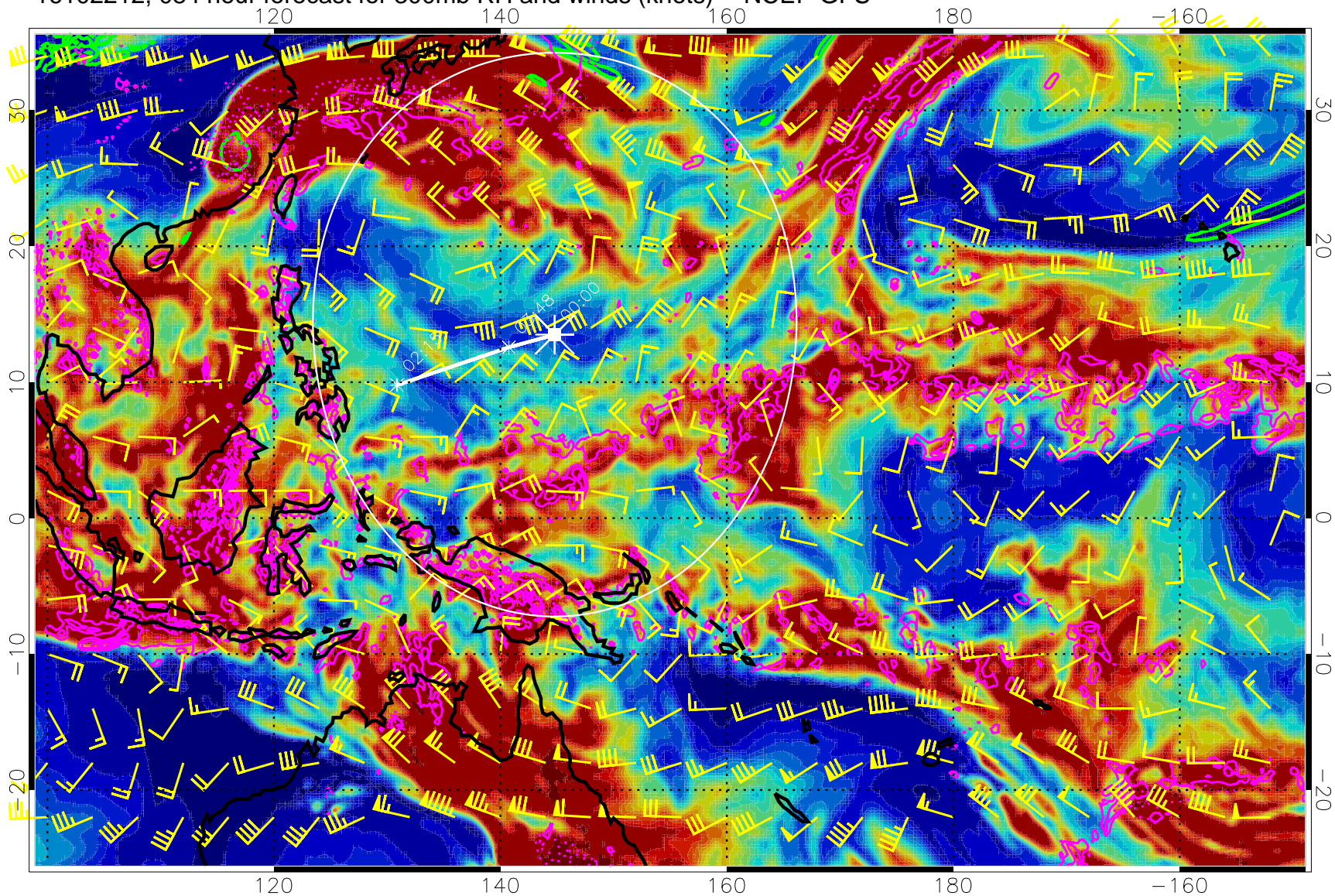


Precip (tot dot, conv sol) mm/day 40 mm/day contours, min 20

EPV Tropopause (2 PVU) Position

Range ring of 2304 km

16102212, 084 hour forecast for 300mb RH and winds (knots) -- NCEP GFS



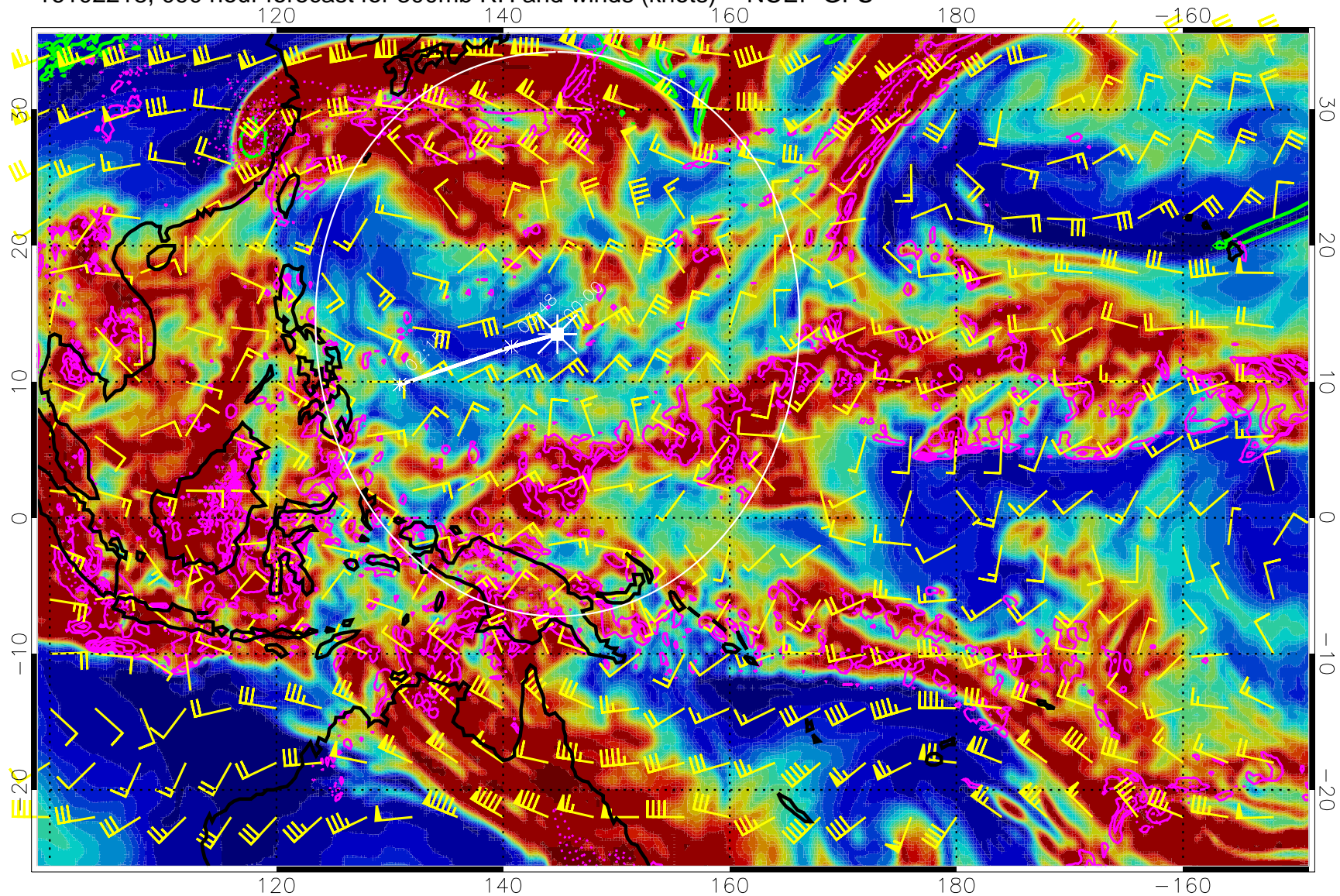
0 20 40 60 80 100
RH, %

Precip (tot dot, conv sol) mm/day 40 mm/day contours, min 20

EPV Tropopause (2 PVU) Position

Range ring of 2304 km

16102218, 090 hour forecast for 300mb RH and winds (knots) -- NCEP GFS

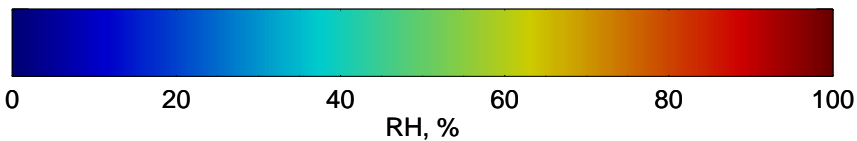
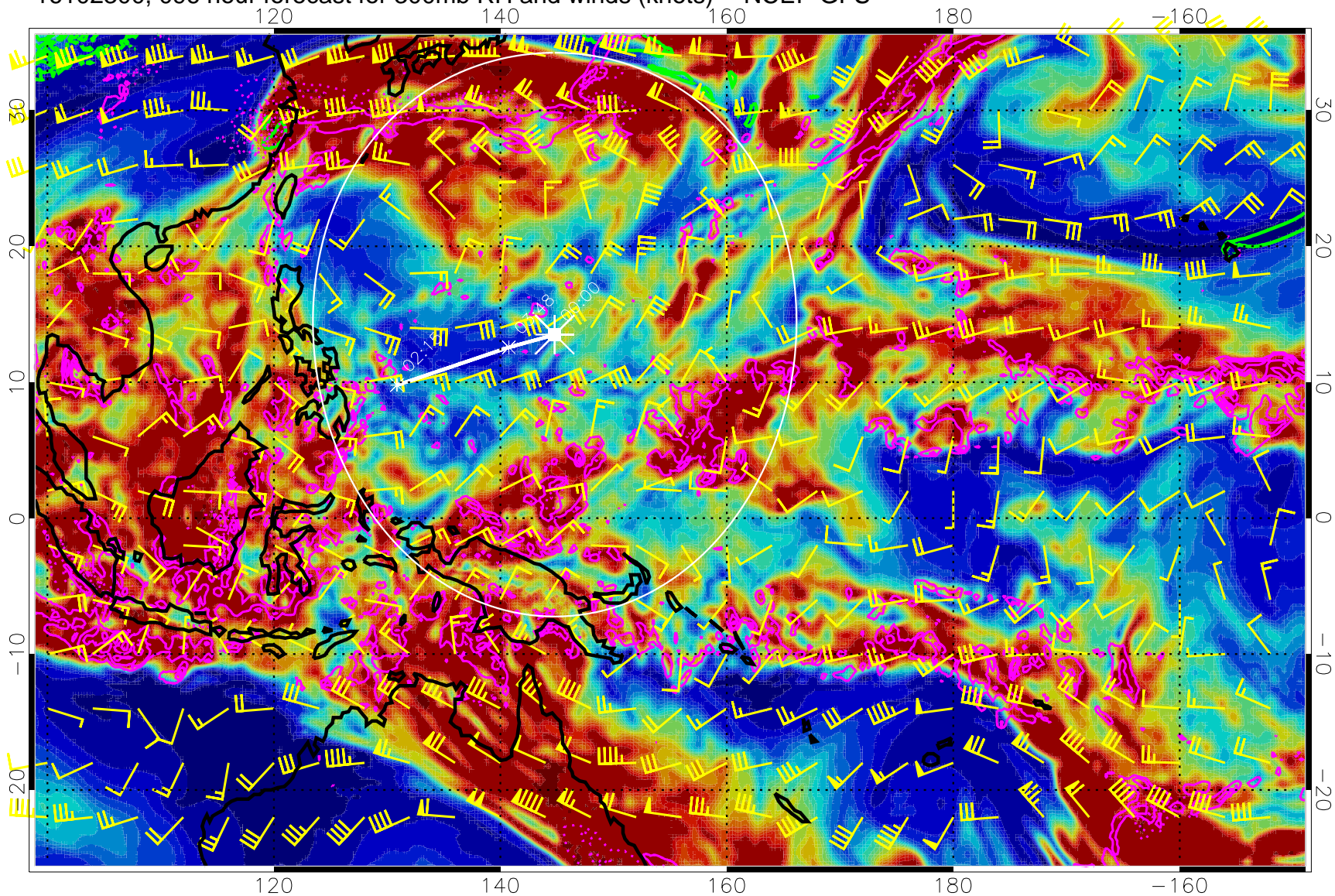


Precip (tot dot, conv sol) mm/day 40 mm/day contours, min 20

EPV Tropopause (2 PVU) Position

Range ring of 2304 km

16102300, 096 hour forecast for 300mb RH and winds (knots) -- NCEP GFS

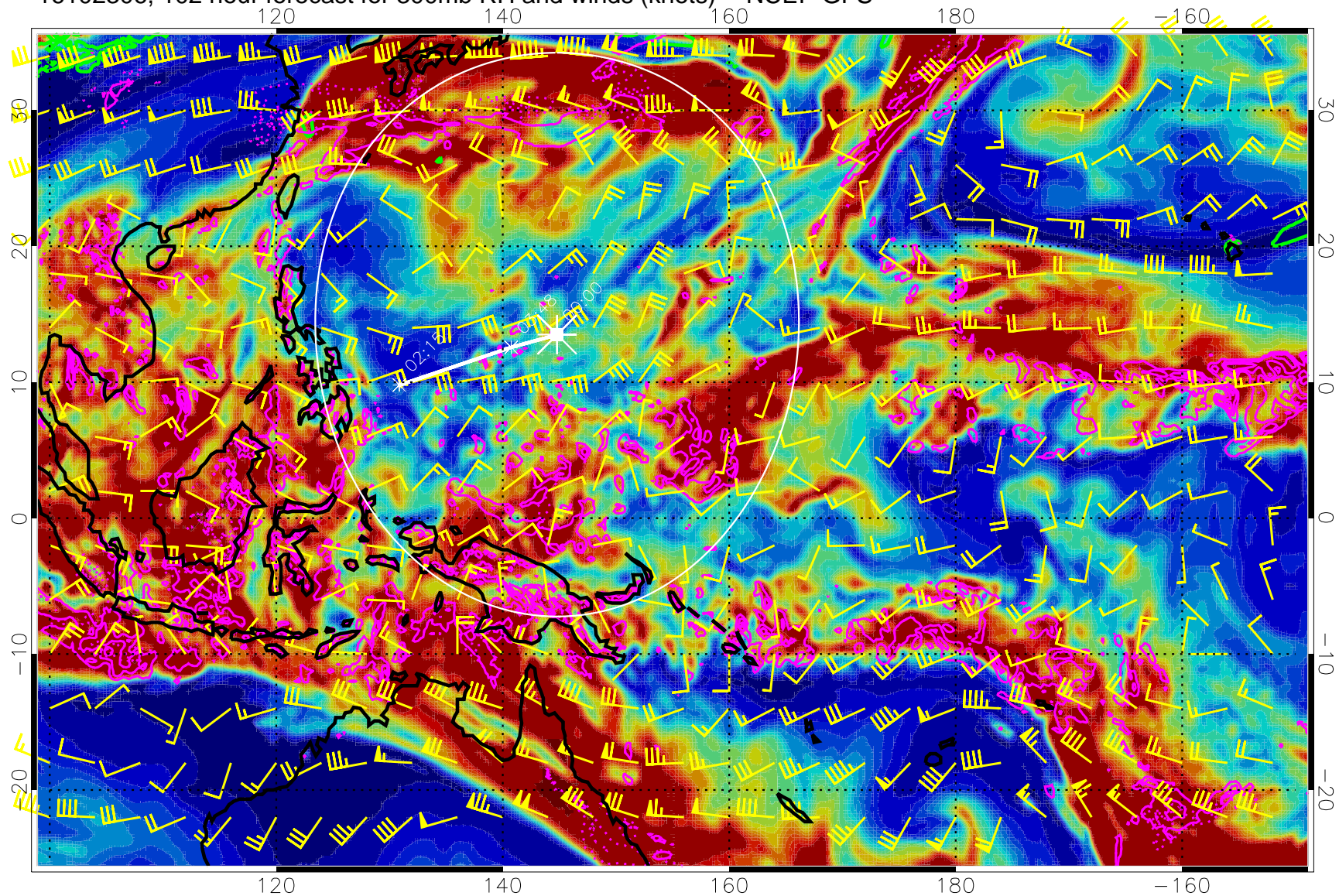


Precip (tot dot, conv sol) mm/day 40 mm/day contours, min 20

EPV Tropopause (2 PVU) Position

Range ring of 2304 km

16102306, 102 hour forecast for 300mb RH and winds (knots) -- NCEP GFS

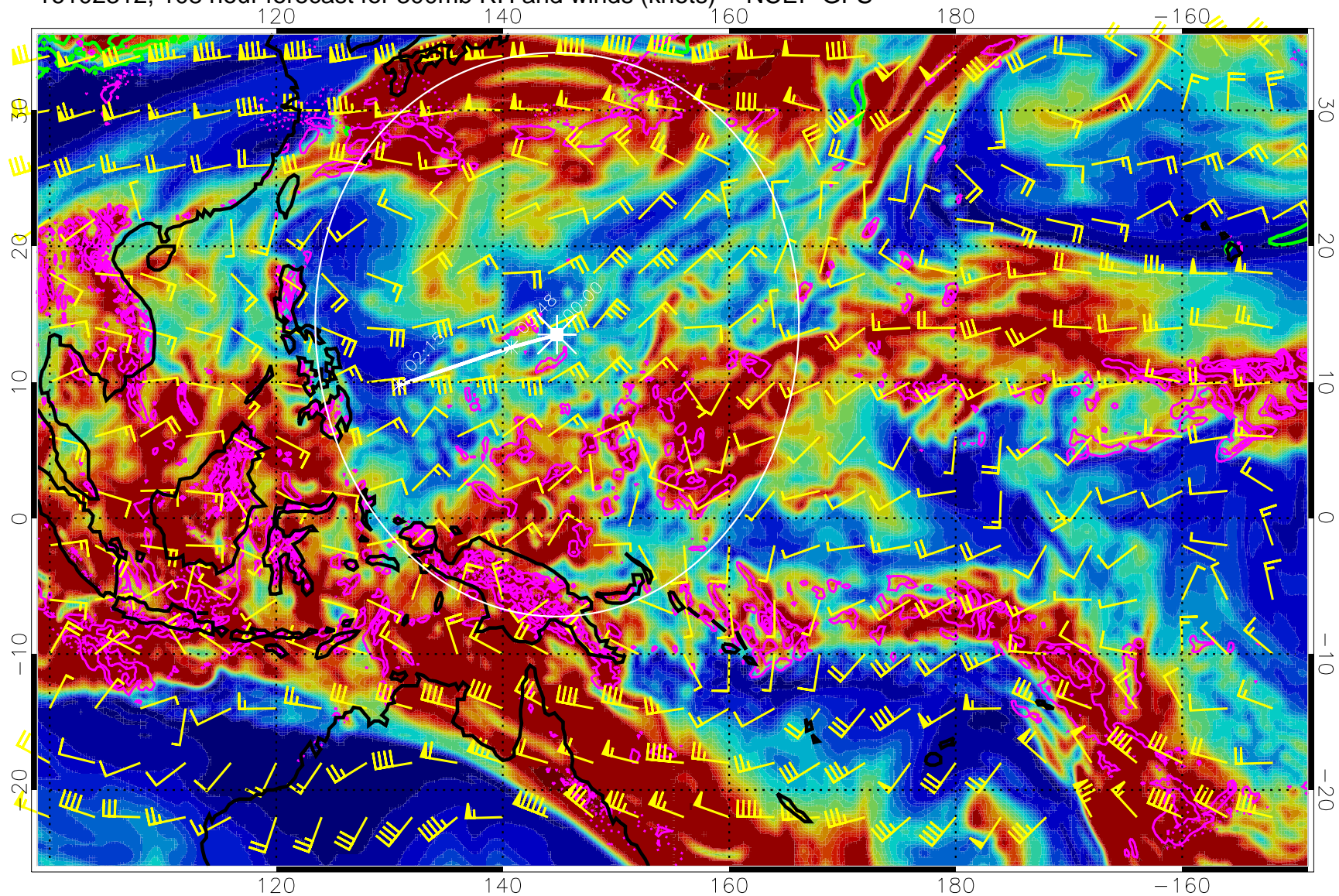


Precip (tot dot, conv sol) mm/day 40 mm/day contours, min 20

EPV Tropopause (2 PVU) Position

Range ring of 2304 km

16102312, 108 hour forecast for 300mb RH and winds (knots) -- NCEP GFS

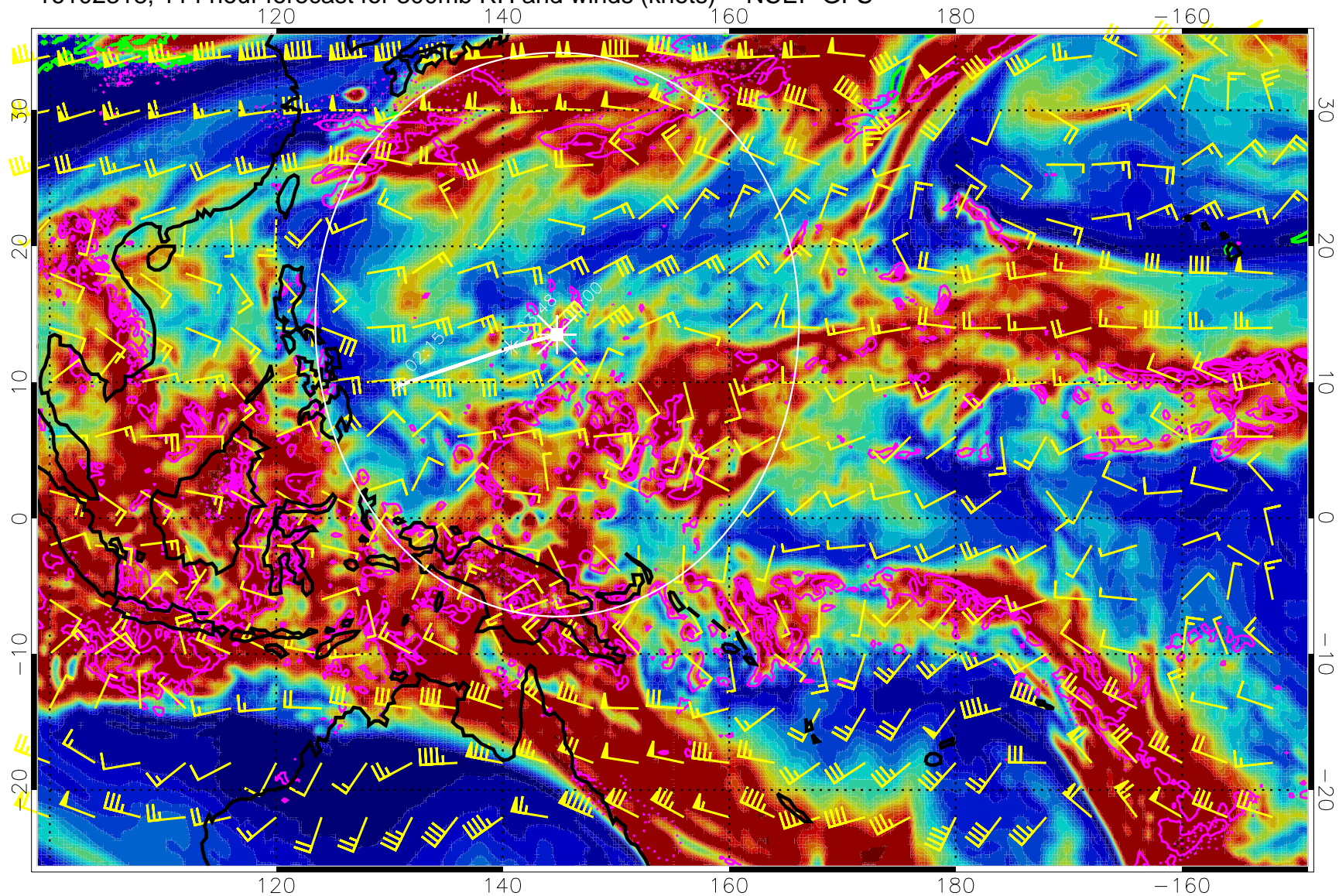


Precip (tot dot, conv sol) mm/day 40 mm/day contours, min 20

EPV Tropopause (2 PVU) Position

Range ring of 2304 km

16102318, 114 hour forecast for 300mb RH and winds (knots) -- NCEP GFS

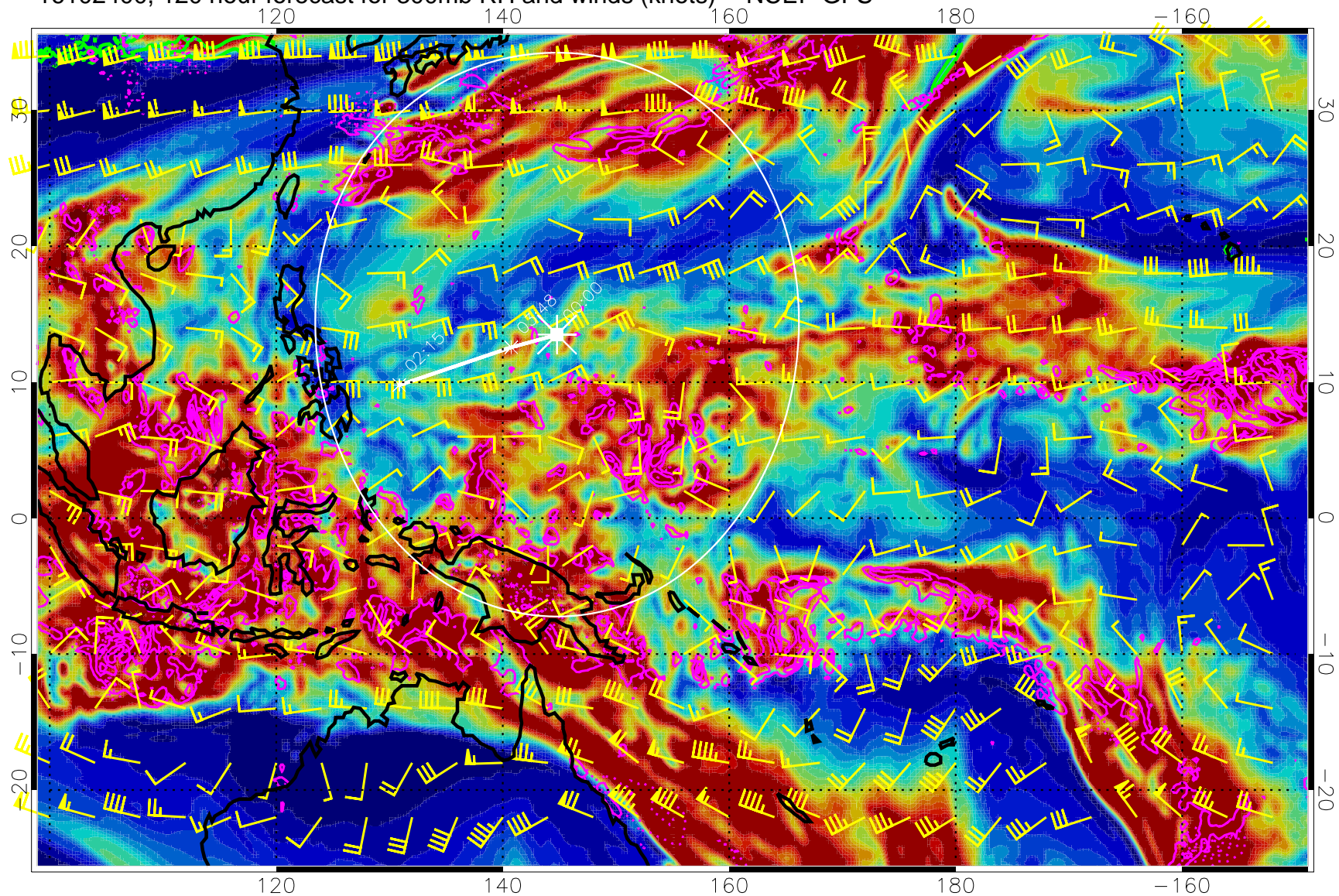


Precip (tot dot, conv sol) mm/day 40 mm/day contours, min 20

EPV Tropopause (2 PVU) Position

Range ring of 2304 km

16102400, 120 hour forecast for 300mb RH and winds (knots) -- NCEP GFS



Precip (tot dot, conv sol) mm/day 40 mm/day contours, min 20

EPV Tropopause (2 PVU) Position

Range ring of 2304 km