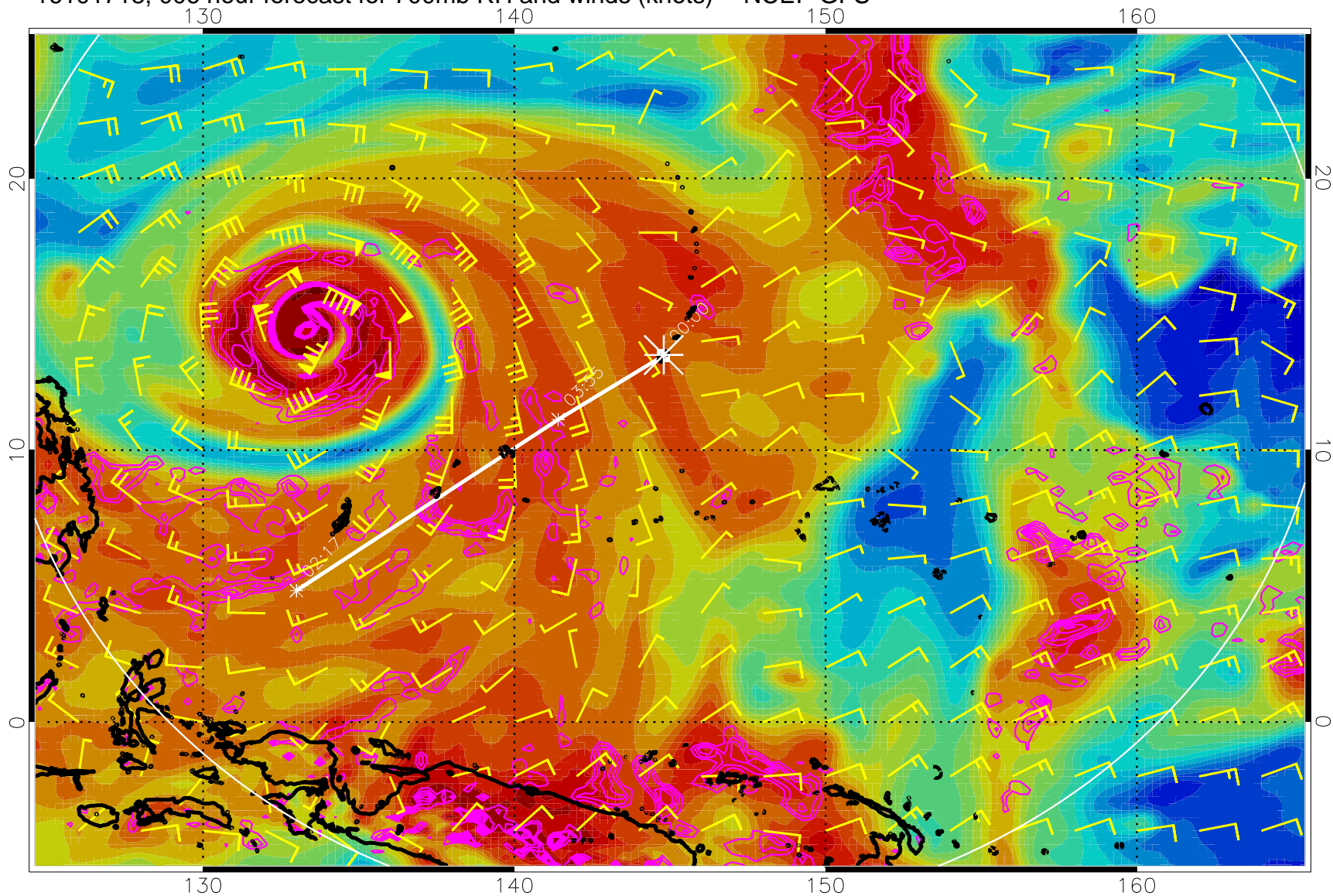
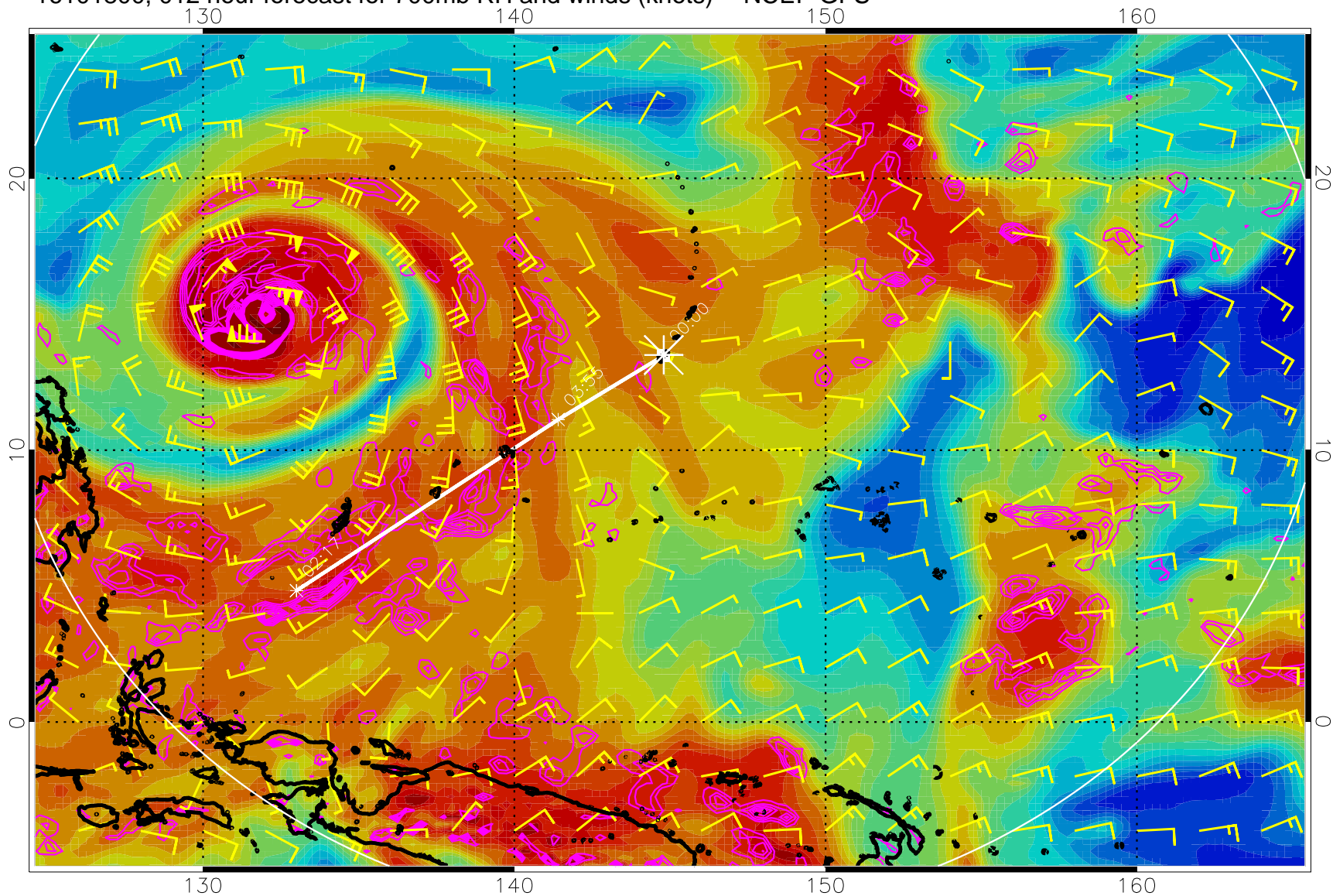


16101718, 006 hour forecast for 700mb RH and winds (knots) -- NCEP GFS



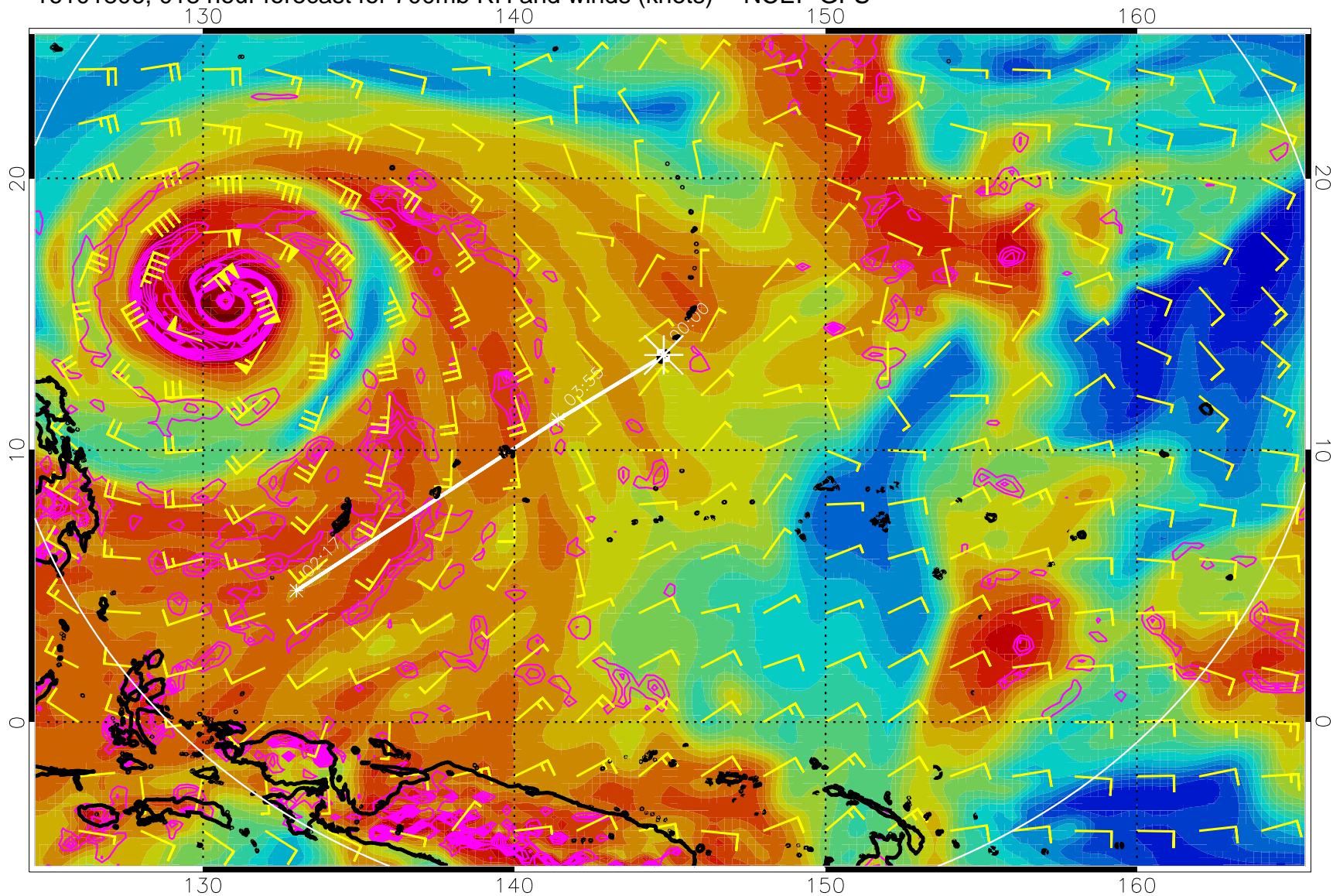
Negative Omegas less than -0.3 , contours of 0.3 Pa/s

16101800, 012 hour forecast for 700mb RH and winds (knots) -- NCEP GFS



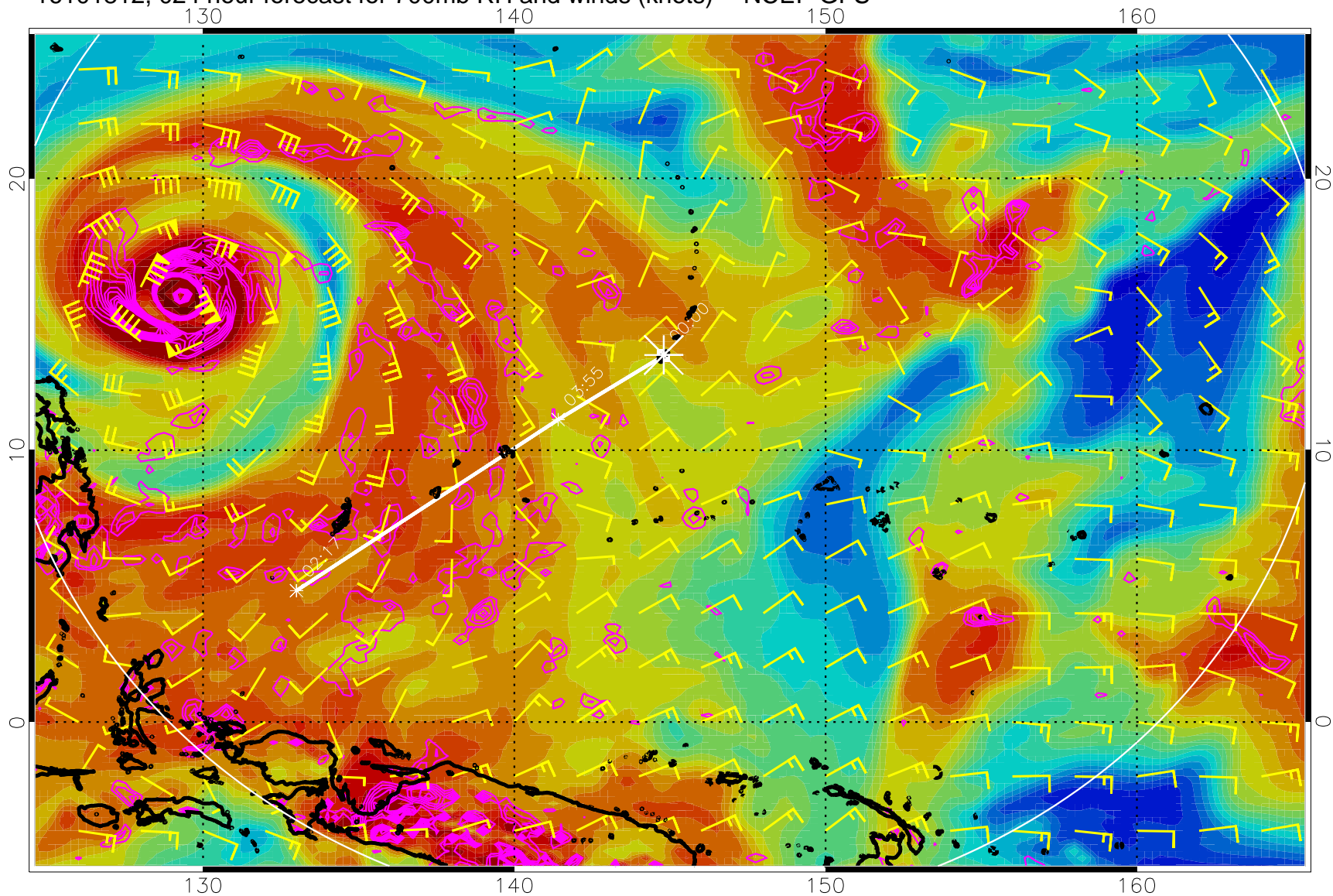
Negative Omegas less than -0.3 , contours of 0.3 Pa/s

16101806, 018 hour forecast for 700mb RH and winds (knots) -- NCEP GFS



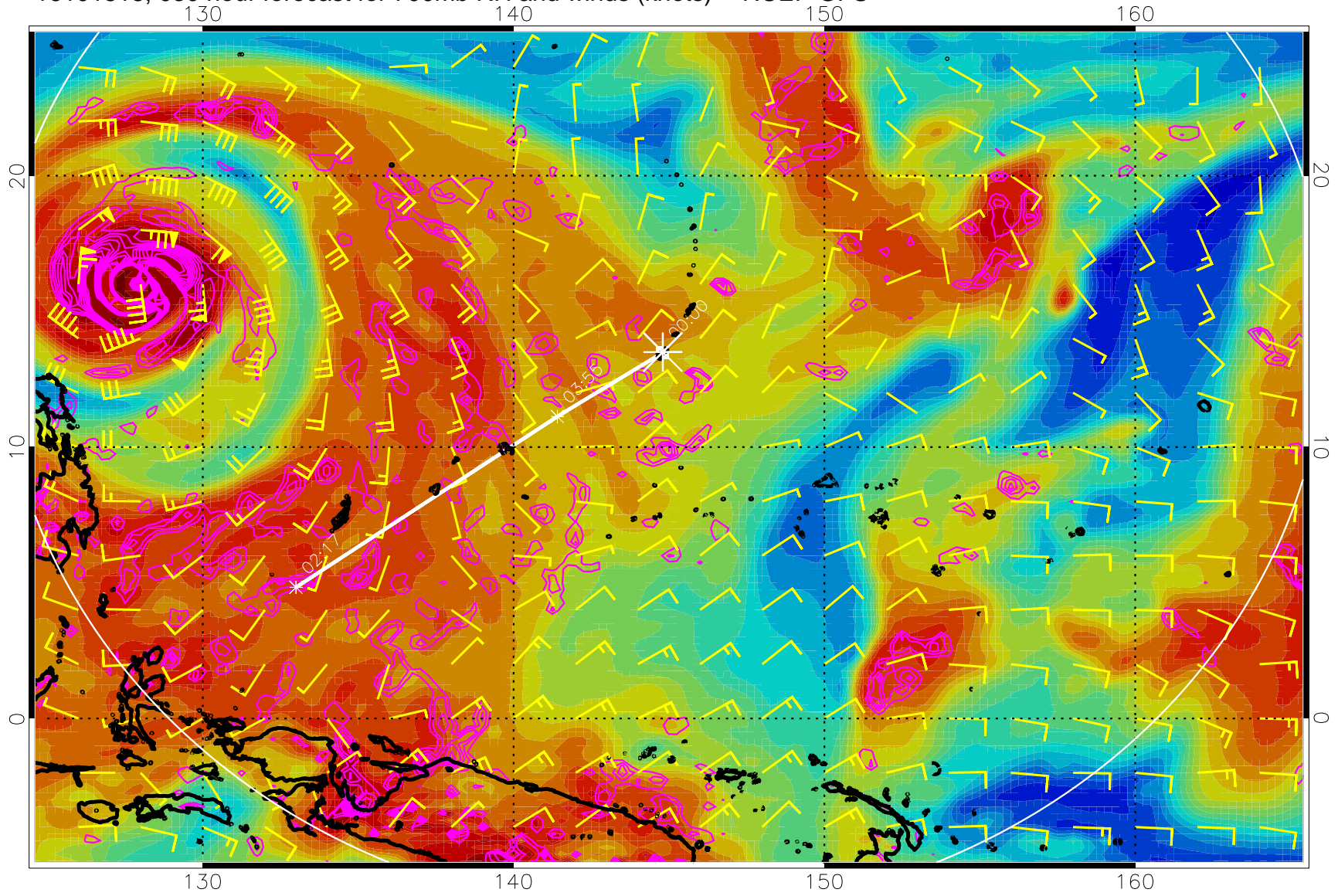
Negative Omegas less than -0.3 , contours of 0.3 Pa/s

16101812, 024 hour forecast for 700mb RH and winds (knots) -- NCEP GFS



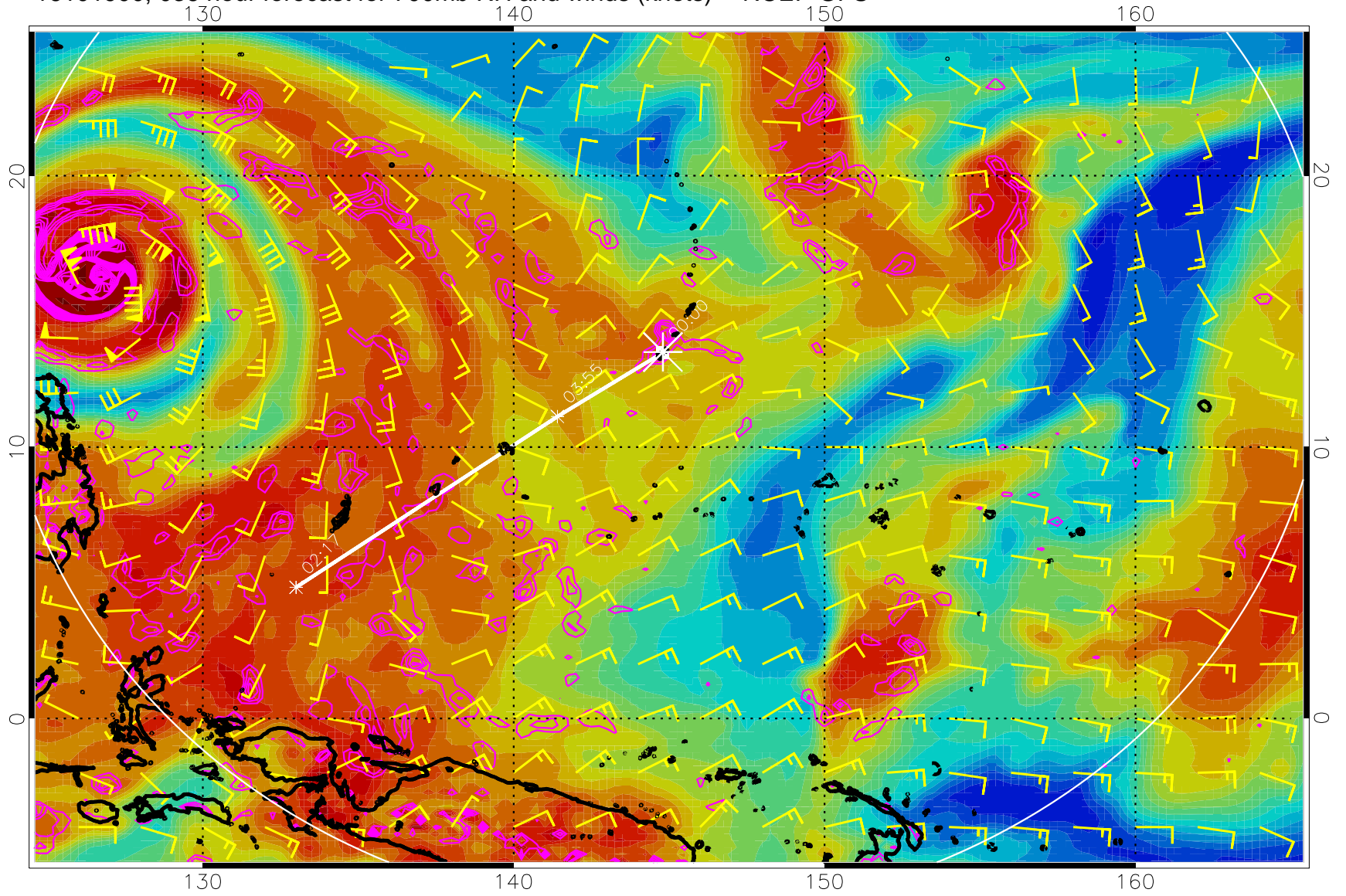
Negative Omegas less than -0.3 , contours of 0.3 Pa/s

16101818, 030 hour forecast for 700mb RH and winds (knots) -- NCEP GFS



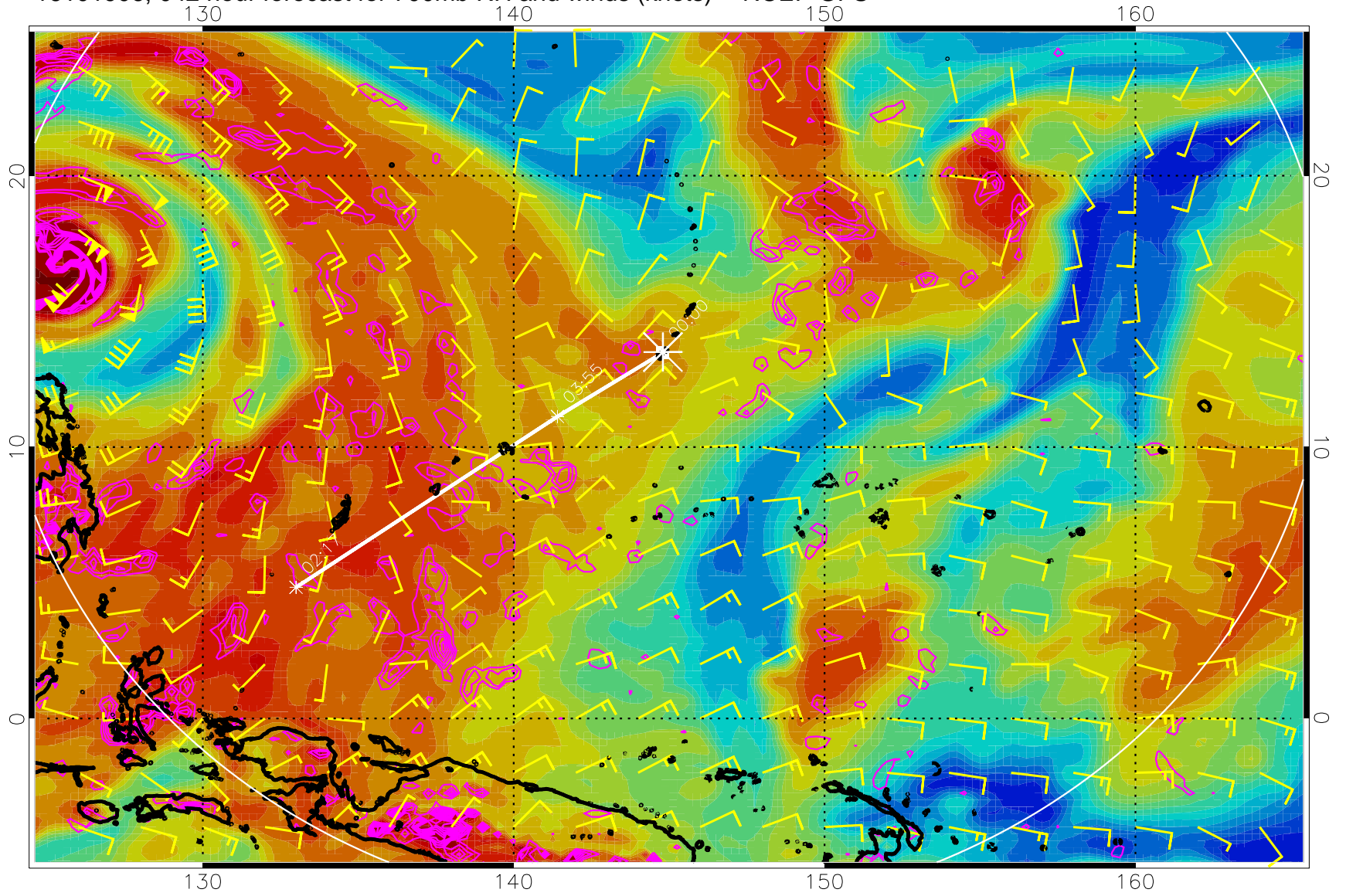
Negative Omegas less than -0.3 , contours of 0.3 Pa/s

16101900, 036 hour forecast for 700mb RH and winds (knots) -- NCEP GFS



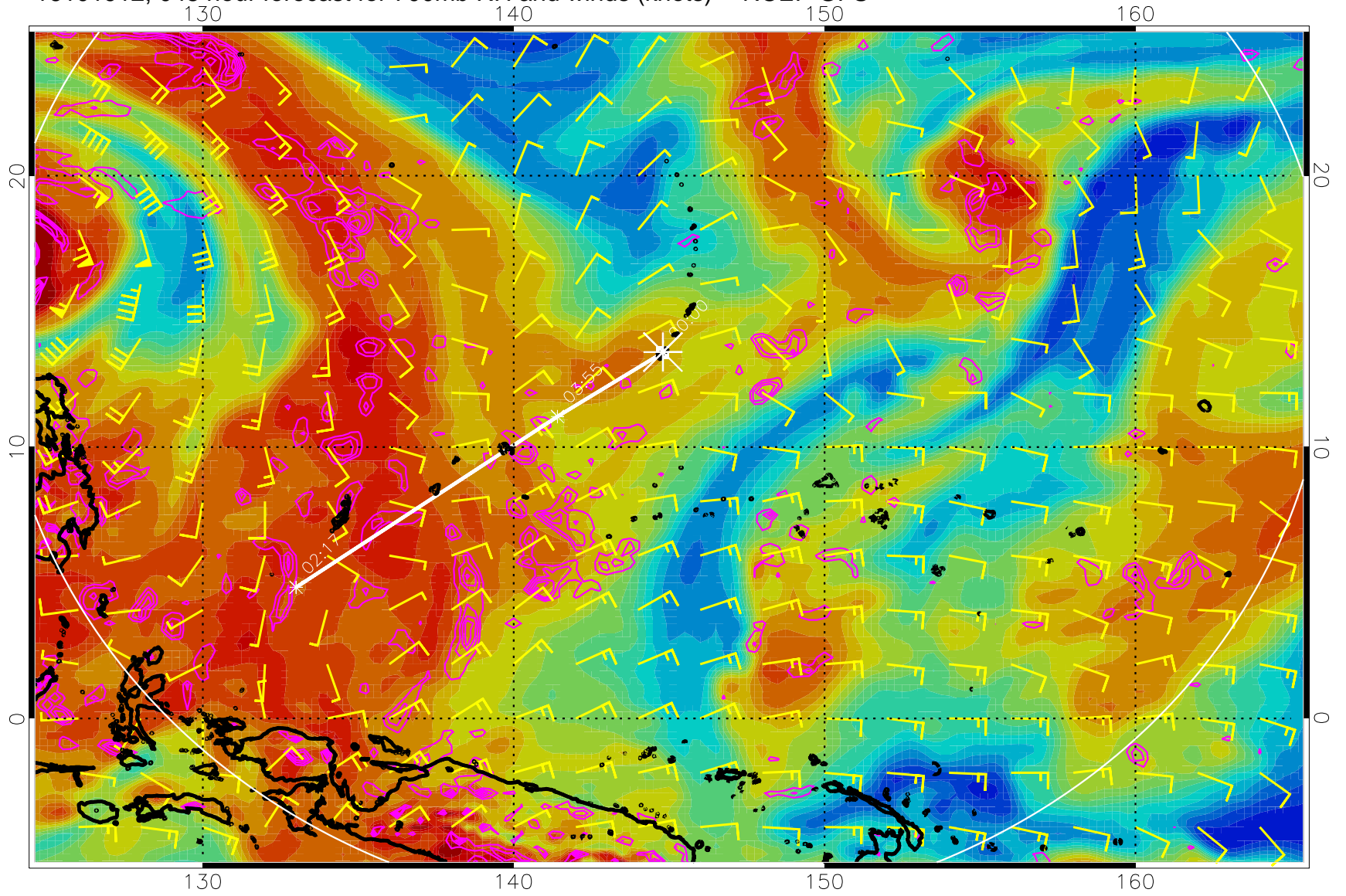
Negative Omegas less than -0.3 , contours of 0.3 Pa/s

16101906, 042 hour forecast for 700mb RH and winds (knots) -- NCEP GFS

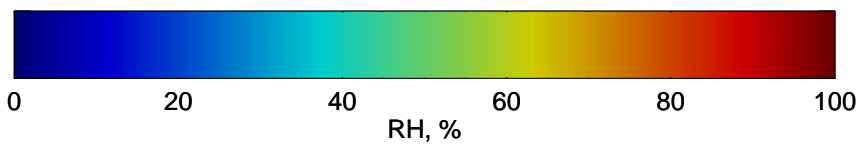


Negative Omegas less than -0.3 , contours of 0.3 Pa/s

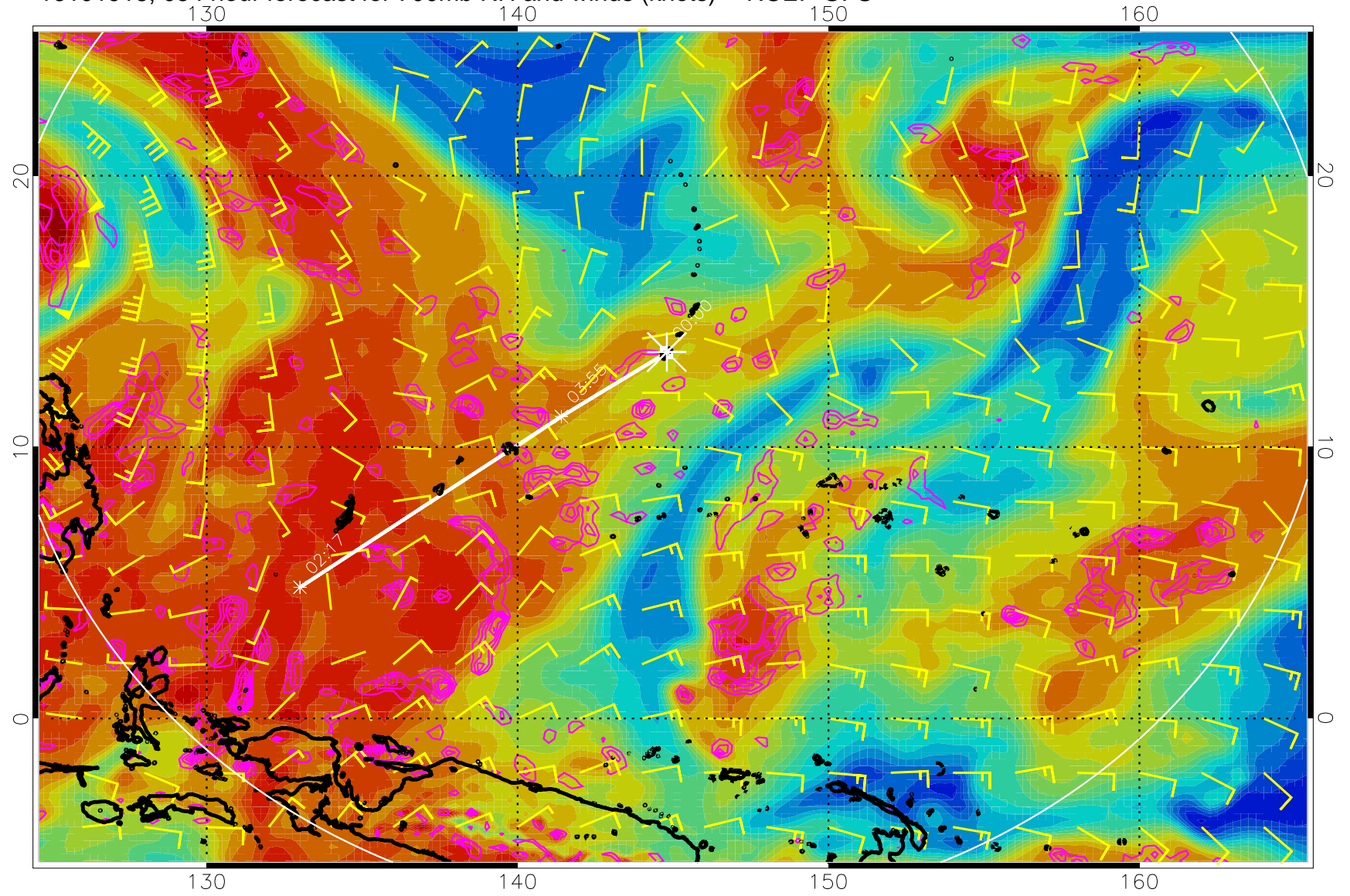
16101912, 048 hour forecast for 700mb RH and winds (knots) -- NCEP GFS



Negative Omegas less than -0.3 , contours of 0.3 Pa/s

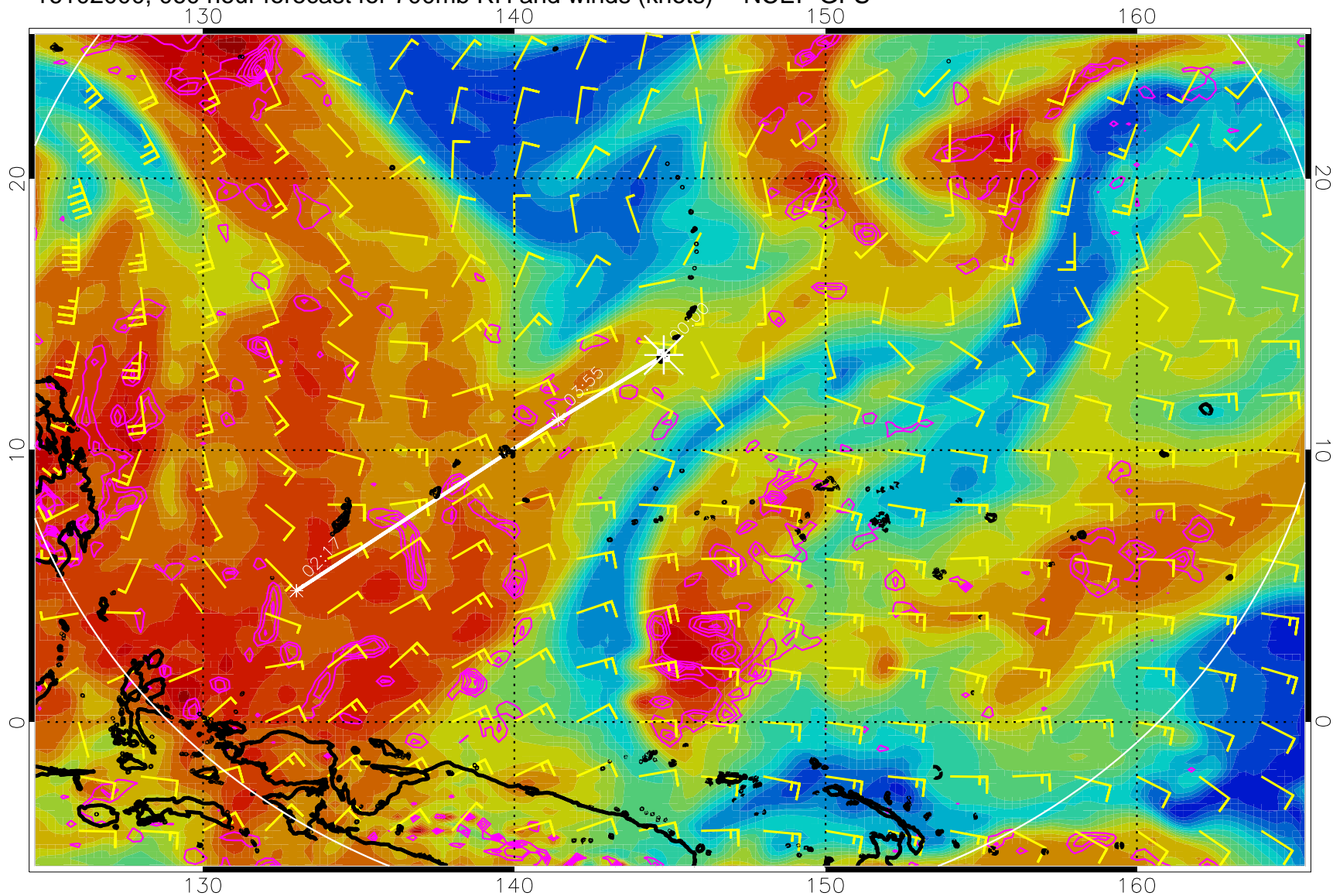


16101918, 054 hour forecast for 700mb RH and winds (knots) -- NCEP GFS



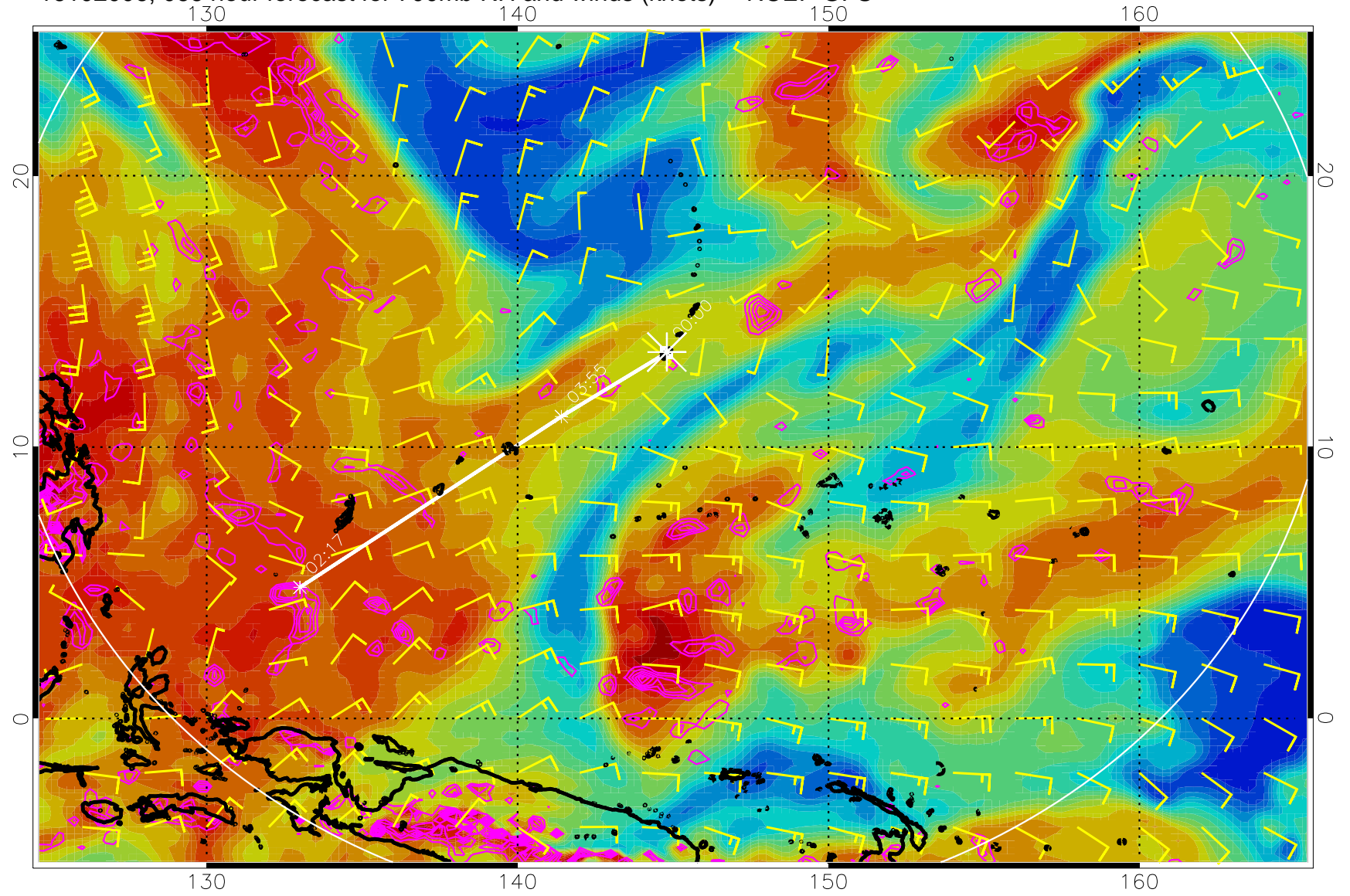
Negative Omegas less than $-.3$, contours of $.3$ Pa/s

16102000, 060 hour forecast for 700mb RH and winds (knots) -- NCEP GFS



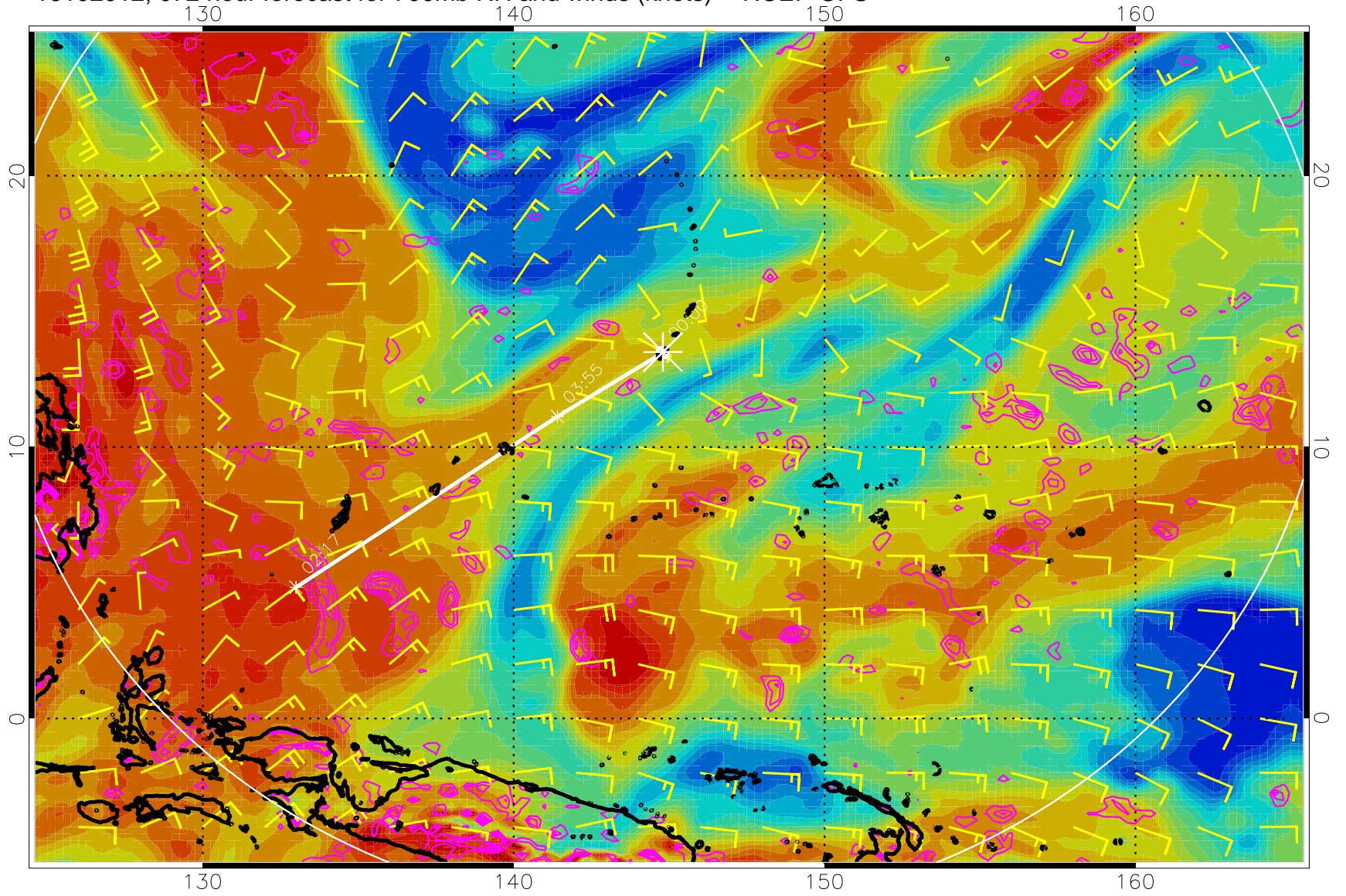
Negative Omegas less than -0.3 , contours of 0.3 Pa/s

16102006, 066 hour forecast for 700mb RH and winds (knots) -- NCEP GFS



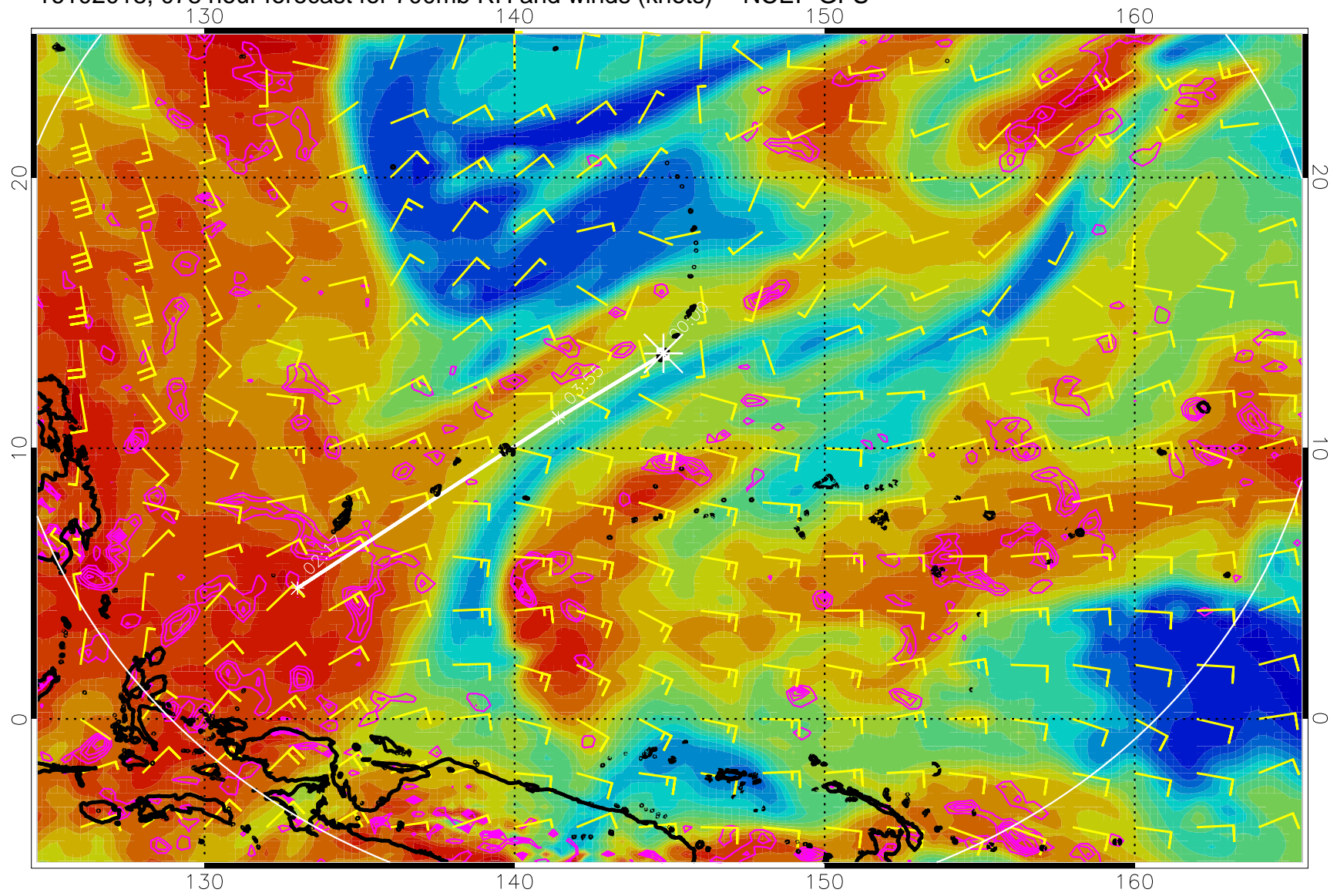
Negative Omegas less than -.3, contours of .3 Pa/s

16102012, 072 hour forecast for 700mb RH and winds (knots) -- NCEP GFS



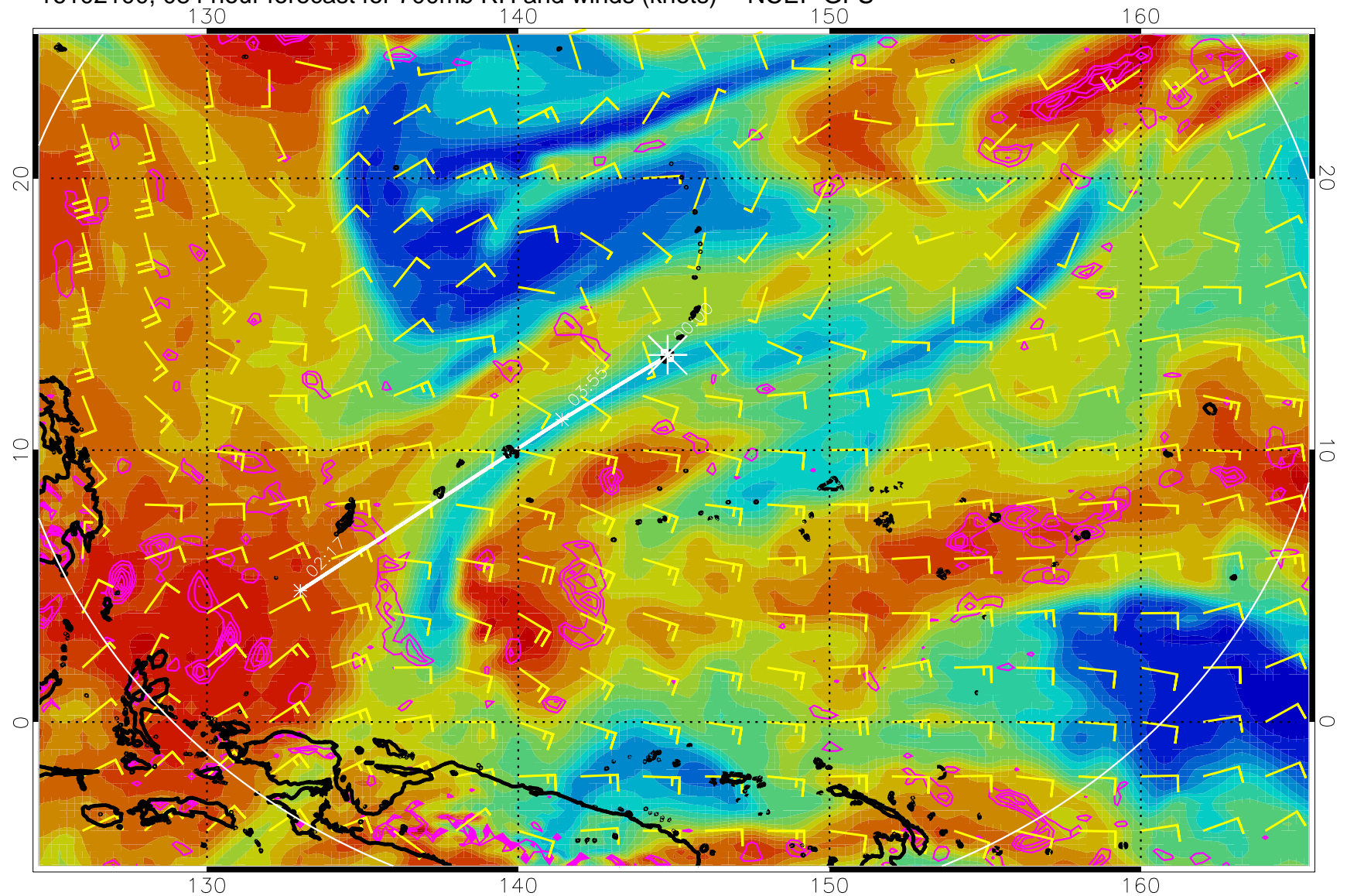
Negative Omegas less than -.3, contours of .3 Pa/s

16102018, 078 hour forecast for 700mb RH and winds (knots) -- NCEP GFS



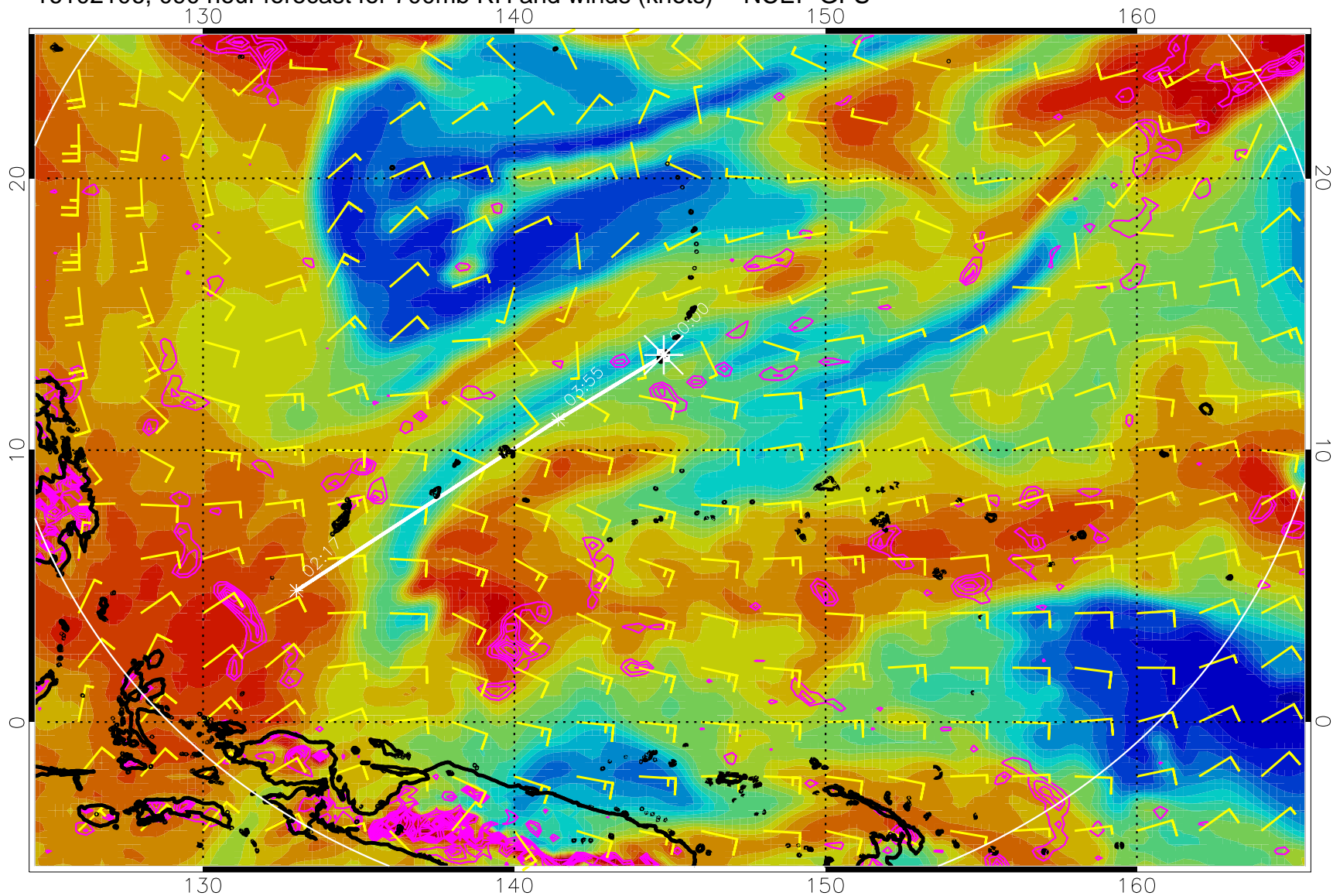
Negative Omegas less than $-.3$, contours of $.3$ Pa/s

16102100, 084 hour forecast for 700mb RH and winds (knots) -- NCEP GFS



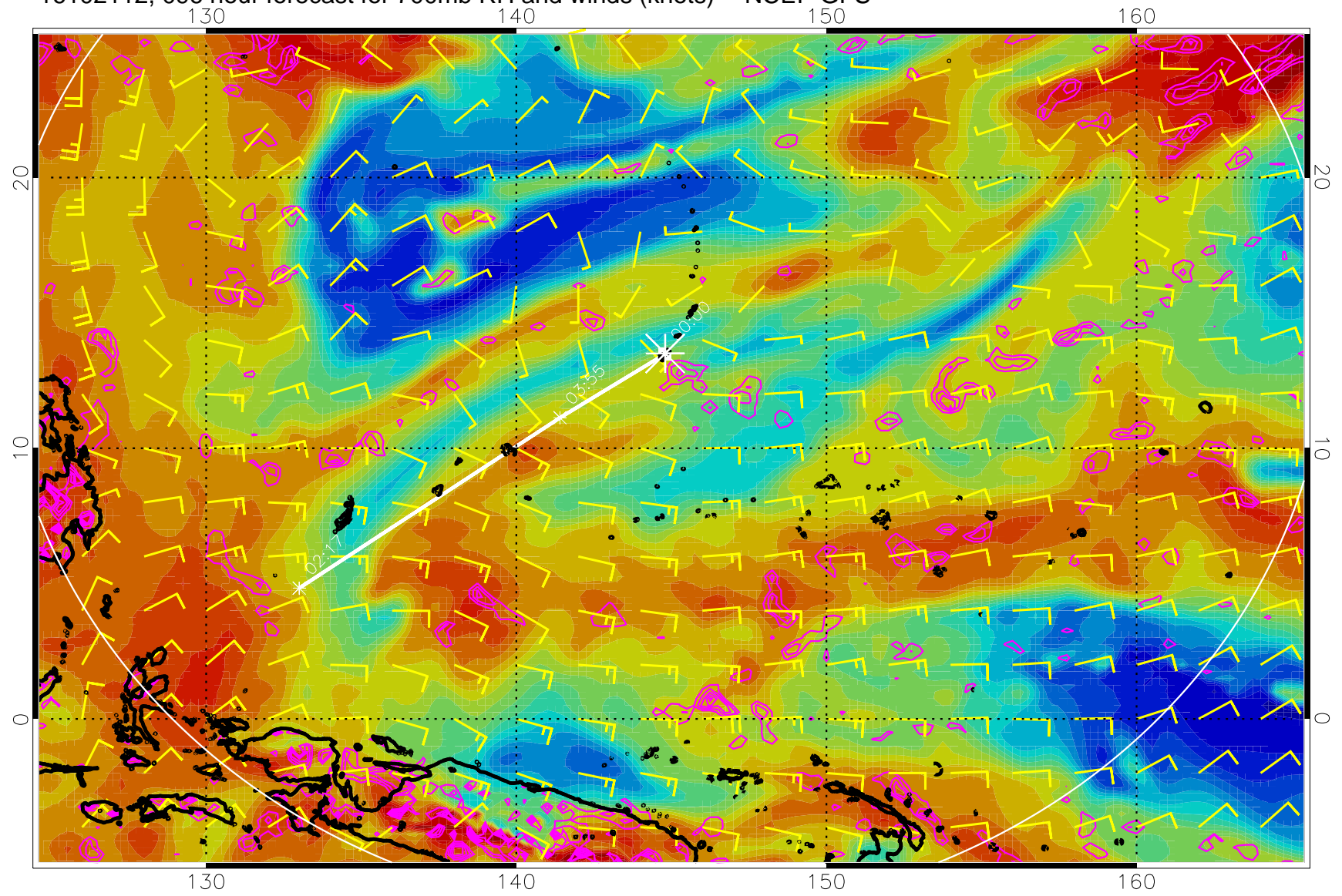
Negative Omegas less than -0.3, contours of 0.3 Pa/s

16102106, 090 hour forecast for 700mb RH and winds (knots) -- NCEP GFS



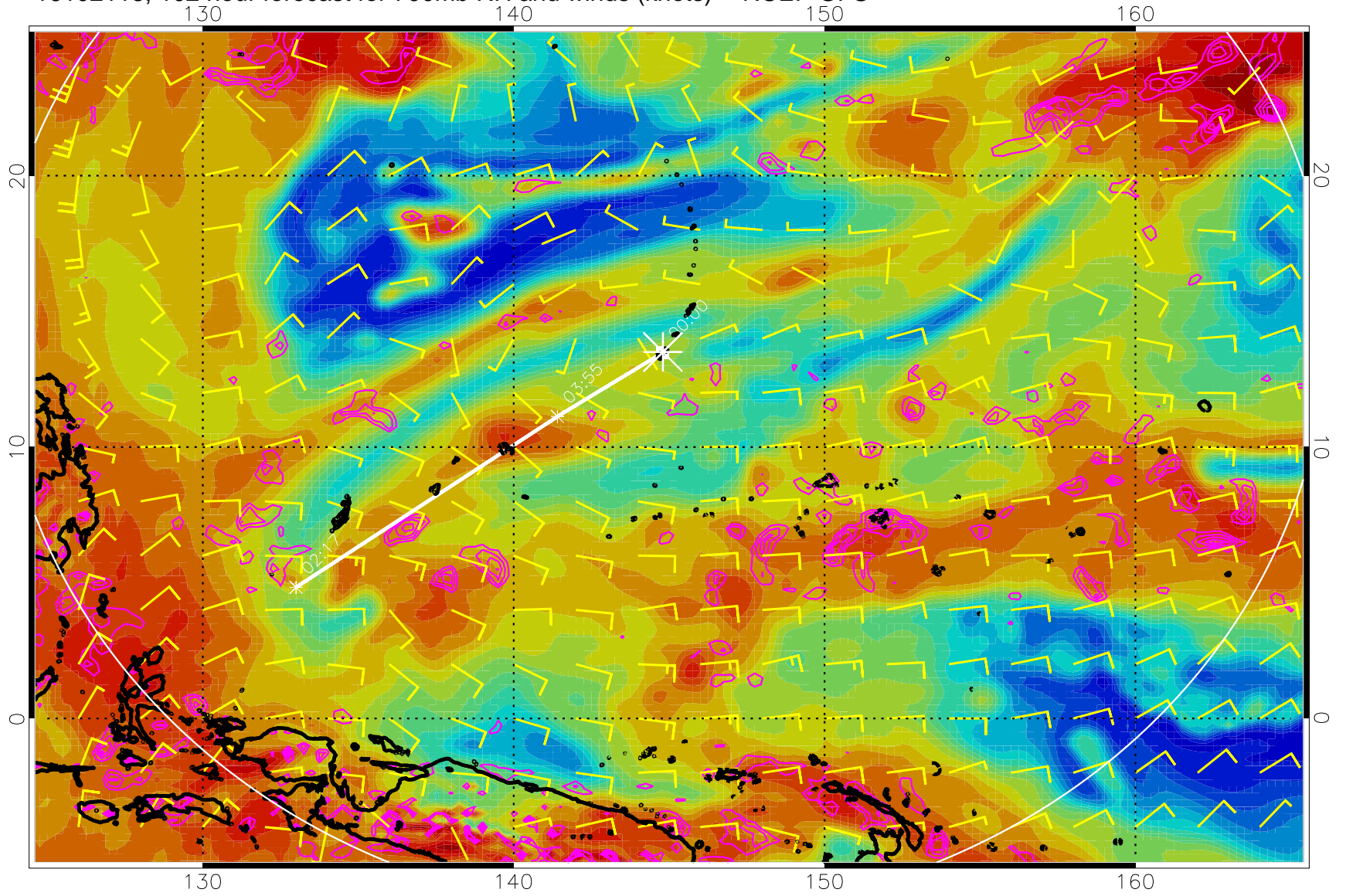
Negative Omegas less than -0.3, contours of 0.3 Pa/s

16102112, 096 hour forecast for 700mb RH and winds (knots) -- NCEP GFS



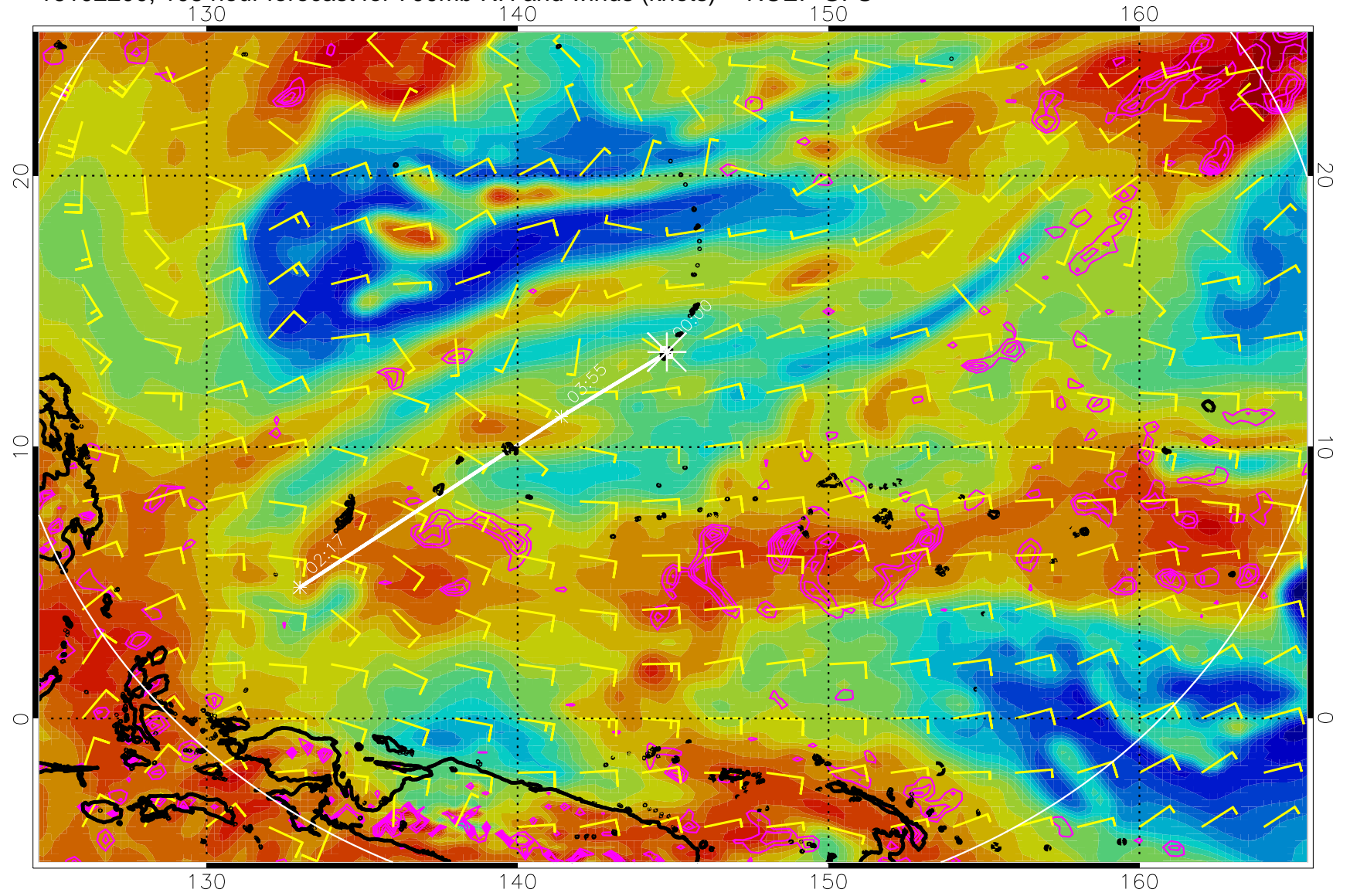
Negative Omegas less than -0.3 , contours of 0.3 Pa/s

16102118, 102 hour forecast for 700mb RH and winds (knots) -- NCEP GFS



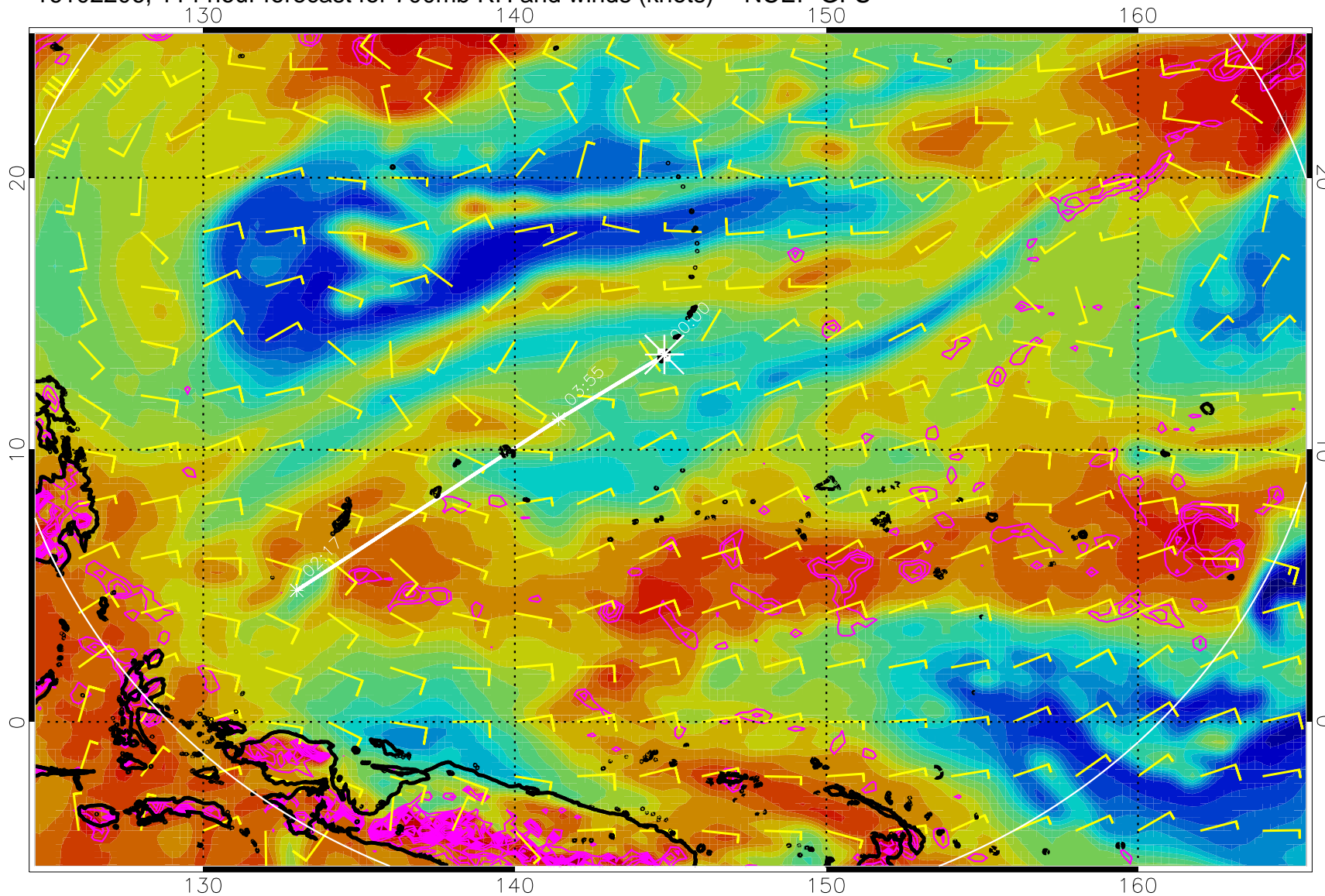
Negative Omegas less than -0.3 , contours of 0.3 Pa/s

16102200, 108 hour forecast for 700mb RH and winds (knots) -- NCEP GFS



Negative Omegas less than -.3, contours of .3 Pa/s

16102206, 114 hour forecast for 700mb RH and winds (knots) -- NCEP GFS



Negative Omegas less than -0.3 , contours of 0.3 Pa/s

16102212, 120 hour forecast for 700mb RH and winds (knots) -- NCEP GFS

