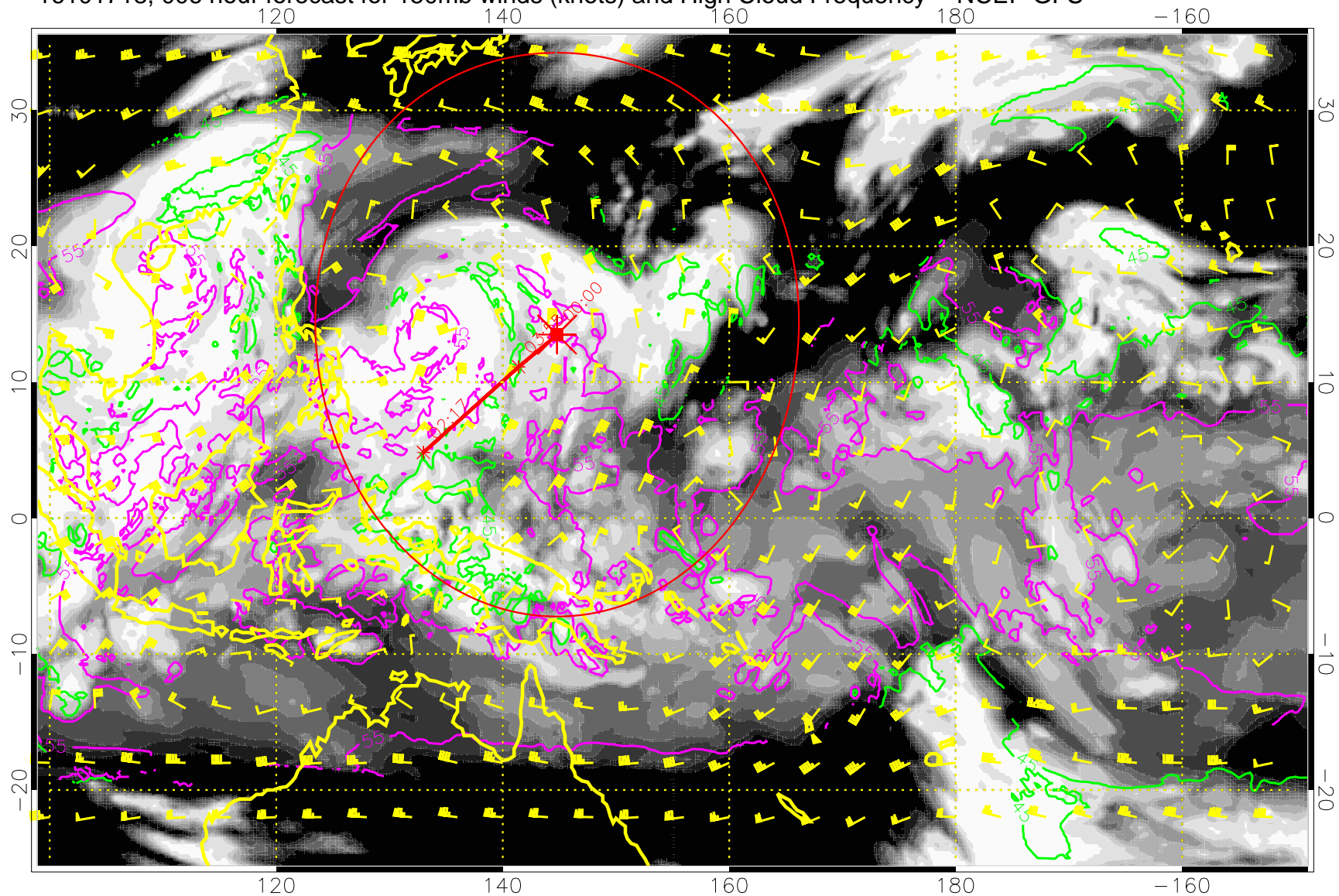


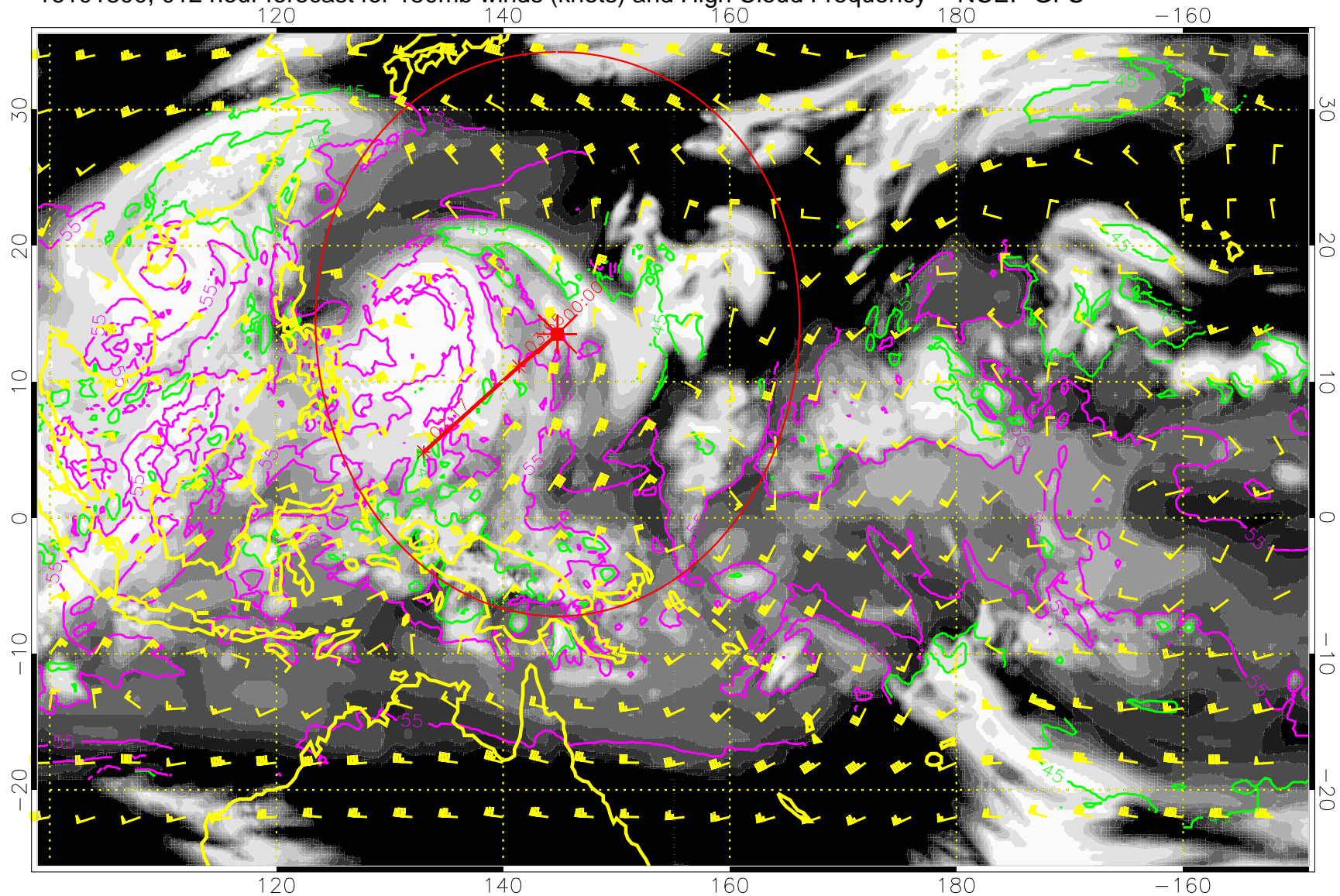
16101718, 006 hour forecast for 150mb winds (knots) and High Cloud Frequency -- NCEP GFS



45 kft
55 kft

Range ring of 2304 km

16101800, 012 hour forecast for 150mb winds (knots) and High Cloud Frequency -- NCEP GFS

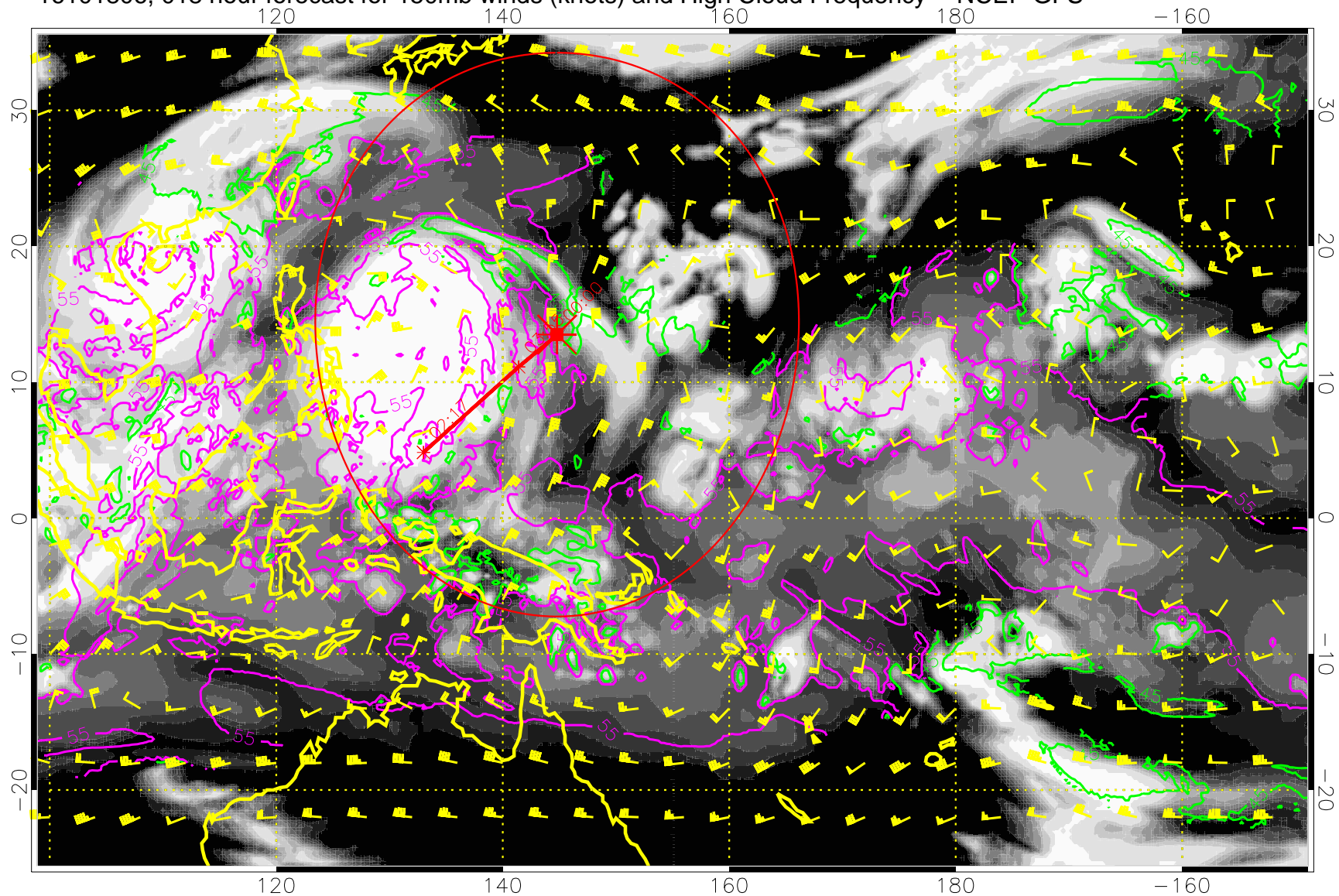


0.0 0.2 0.4 0.6 0.8 1.0
High Cloud Frequency

45 kft
55 kft

Range ring of 2304 km

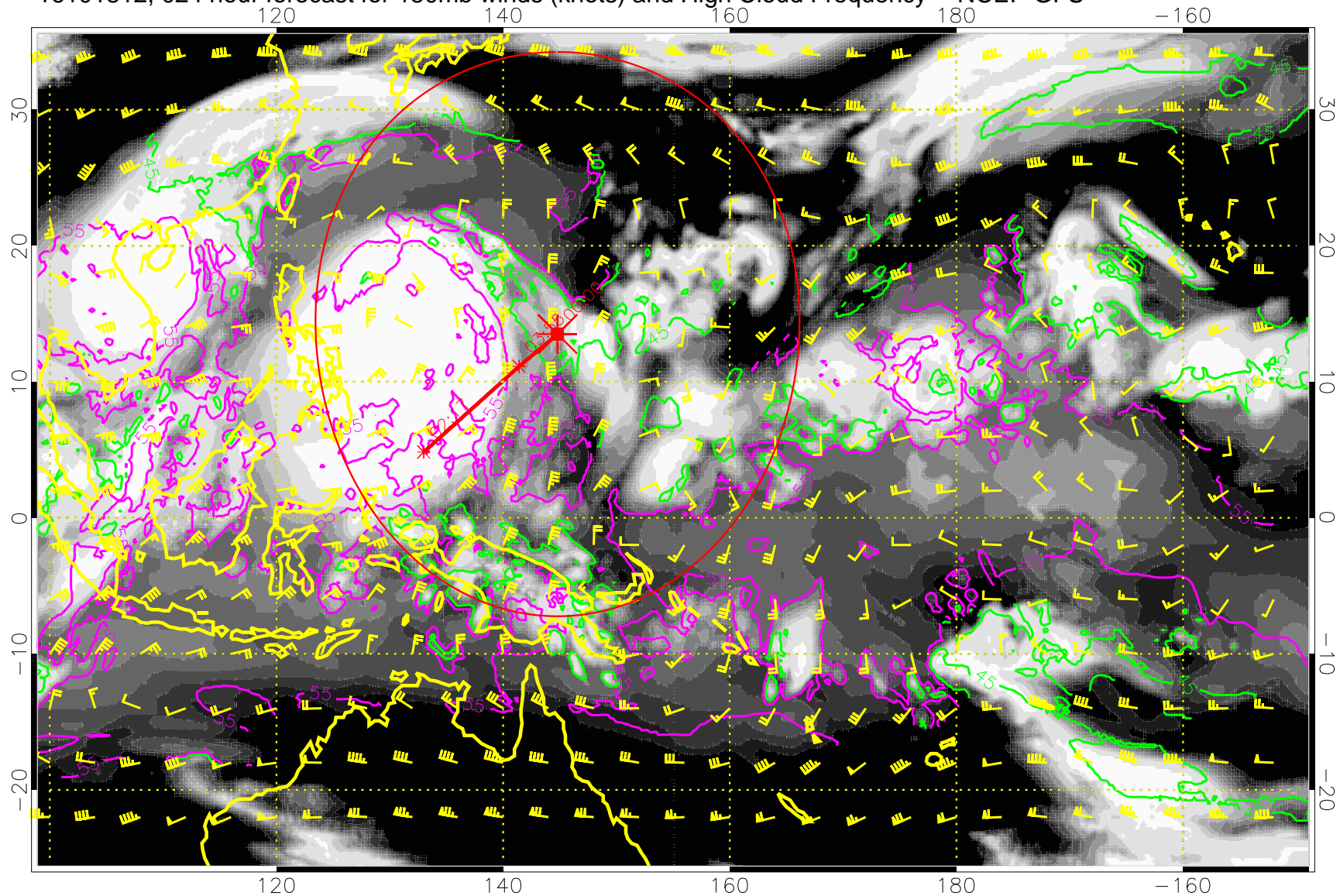
16101806, 018 hour forecast for 150mb winds (knots) and High Cloud Frequency -- NCEP GFS



45 kft
55 kft

Range ring of 2304 km

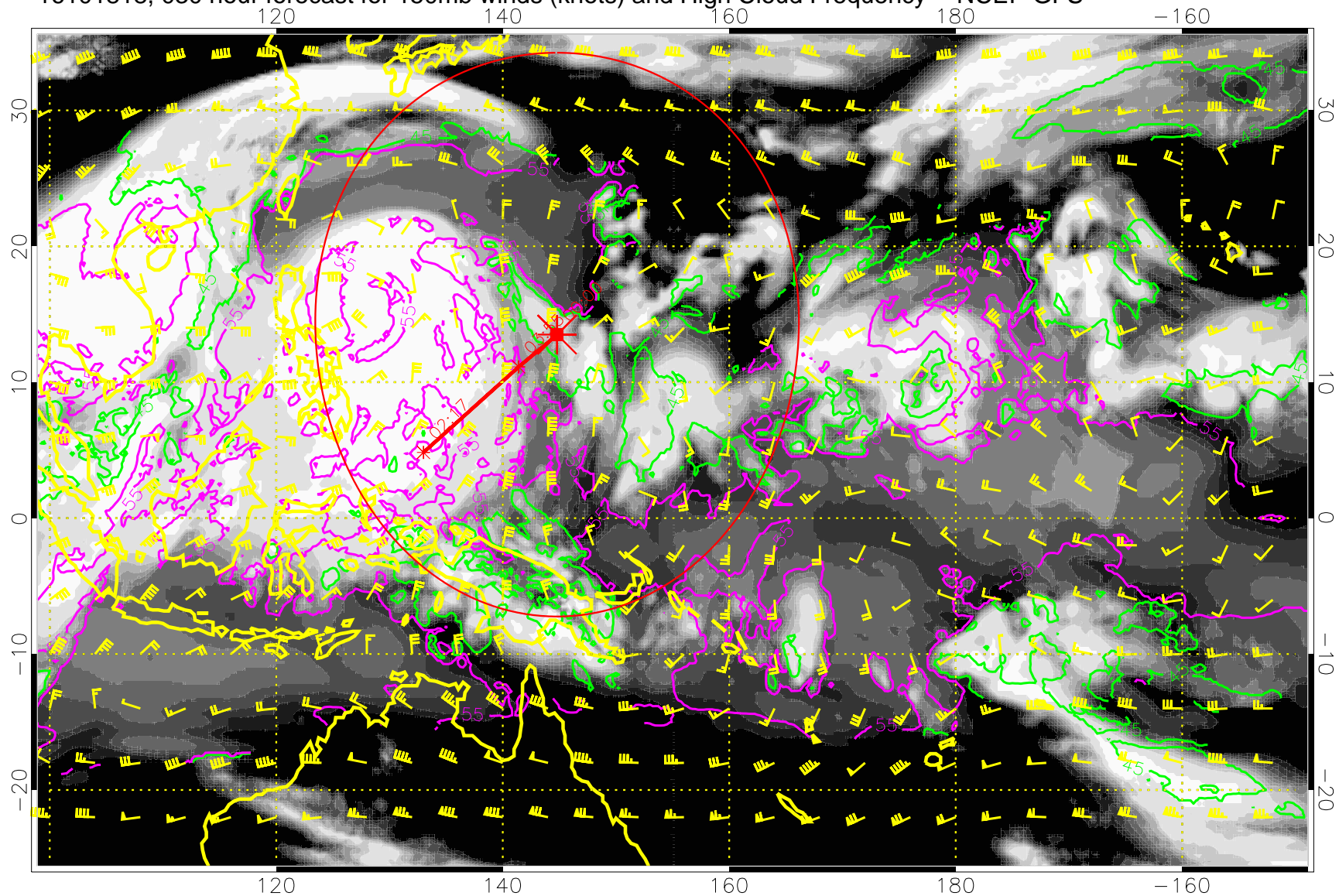
16101812, 024 hour forecast for 150mb winds (knots) and High Cloud Frequency -- NCEP GFS



45 kft
55 kft

Range ring of 2304 km

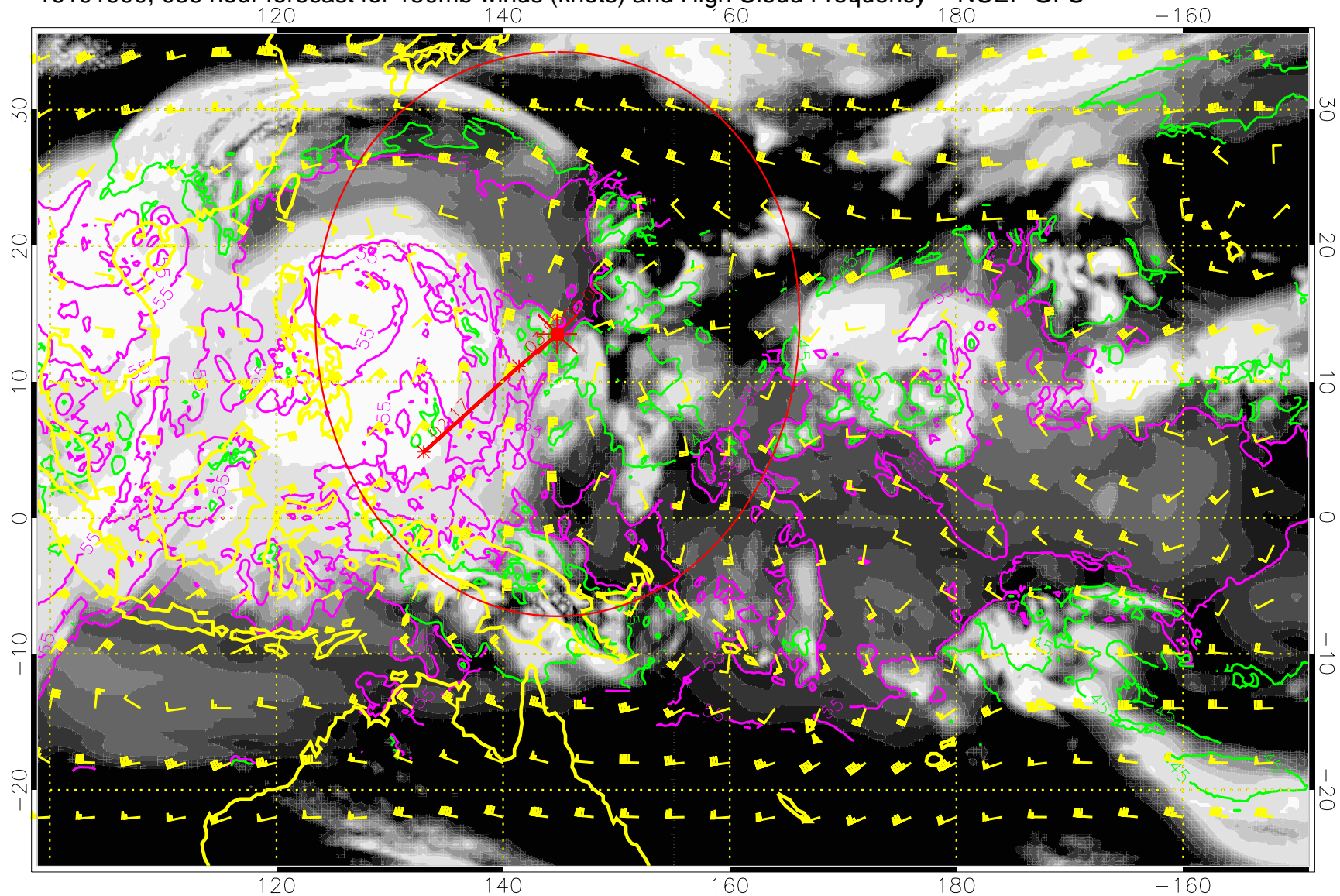
16101818, 030 hour forecast for 150mb winds (knots) and High Cloud Frequency -- NCEP GFS



45 kft
55 kft

Range ring of 2304 km

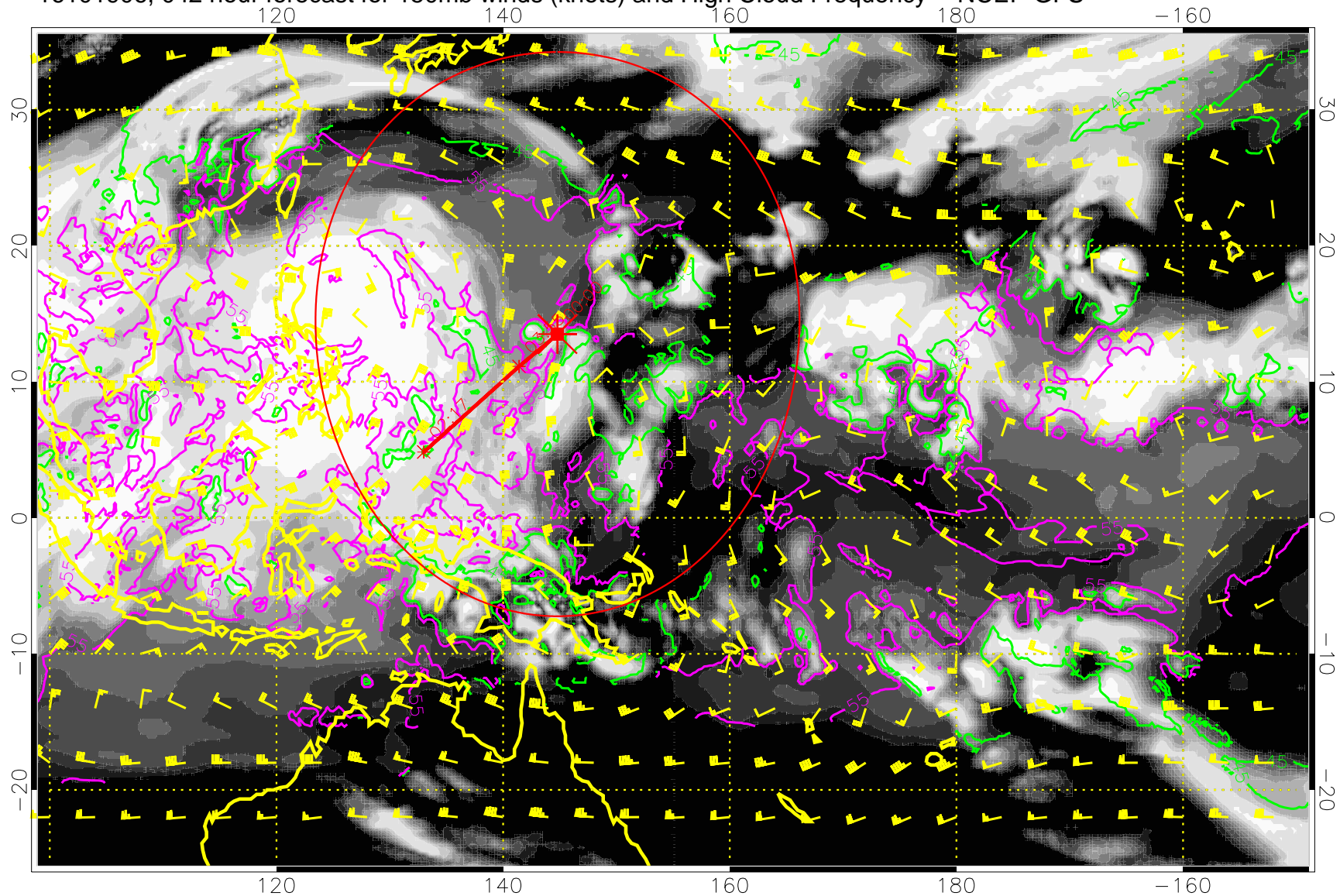
16101900, 036 hour forecast for 150mb winds (knots) and High Cloud Frequency -- NCEP GFS



45 kft
55 kft

Range ring of 2304 km

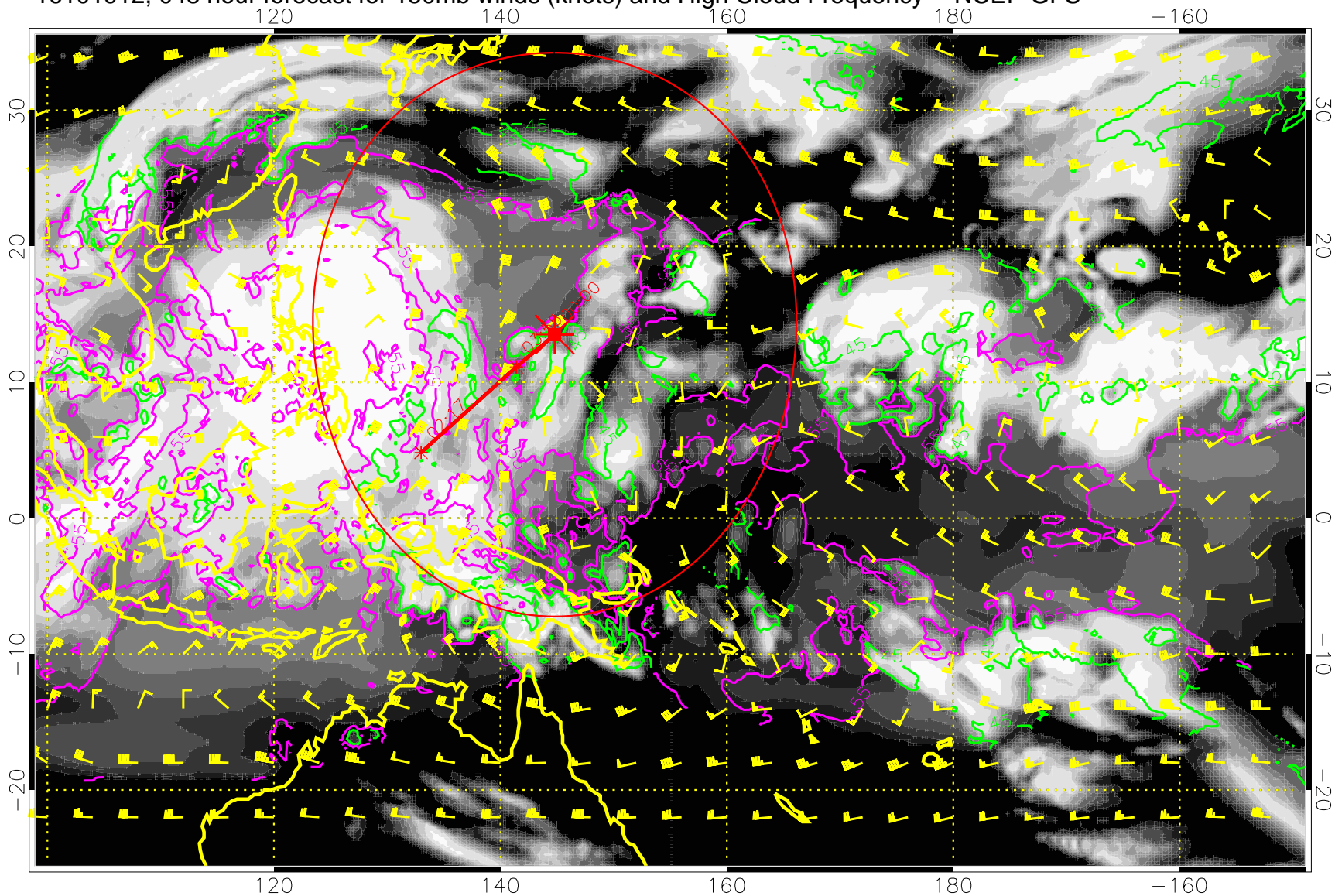
16101906, 042 hour forecast for 150mb winds (knots) and High Cloud Frequency -- NCEP GFS



45 kft
55 kft

Range ring of 2304 km

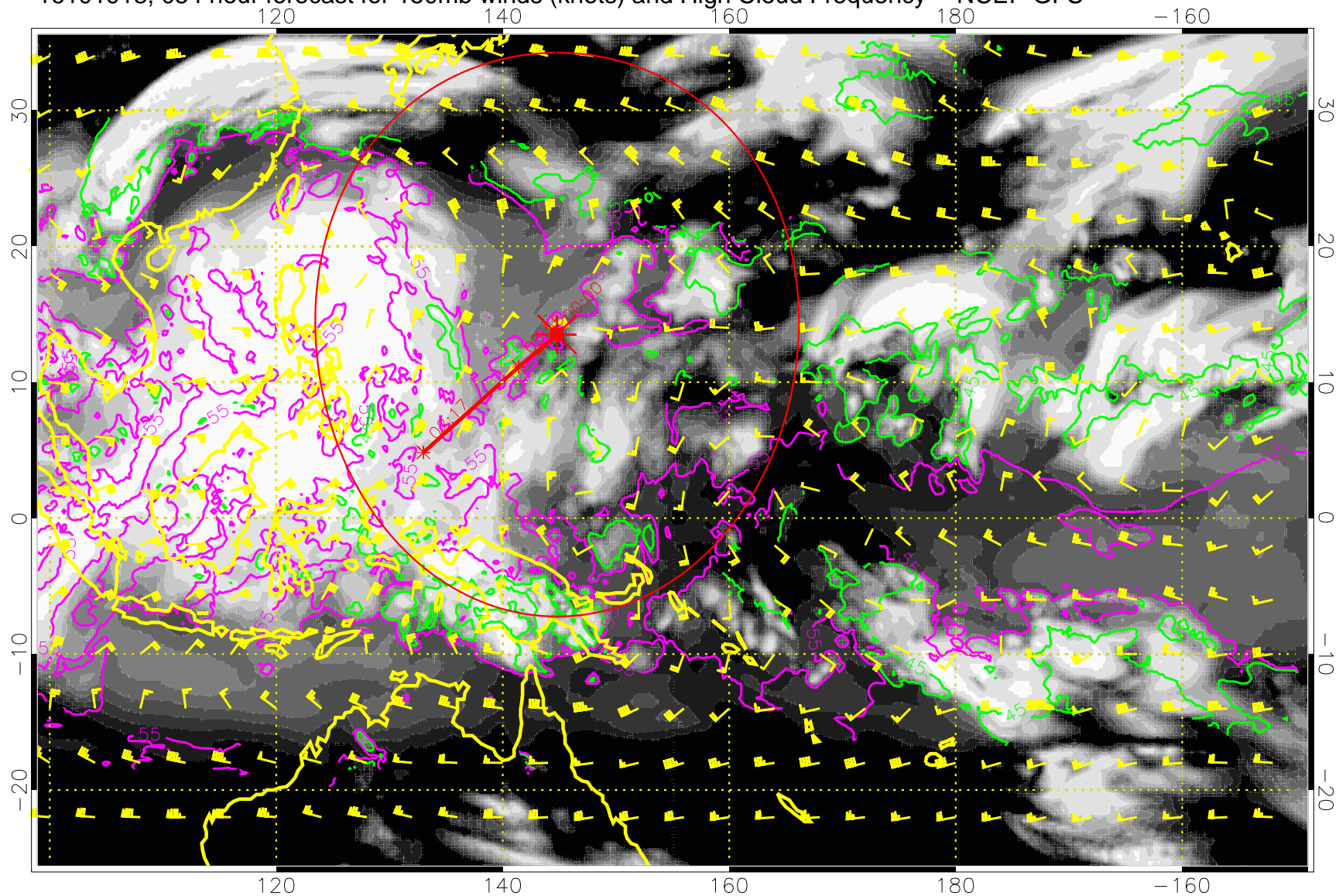
16101912, 048 hour forecast for 150mb winds (knots) and High Cloud Frequency -- NCEP GFS



45 kft
55 kft

Range ring of 2304 km

16101918, 054 hour forecast for 150mb winds (knots) and High Cloud Frequency -- NCEP GFS

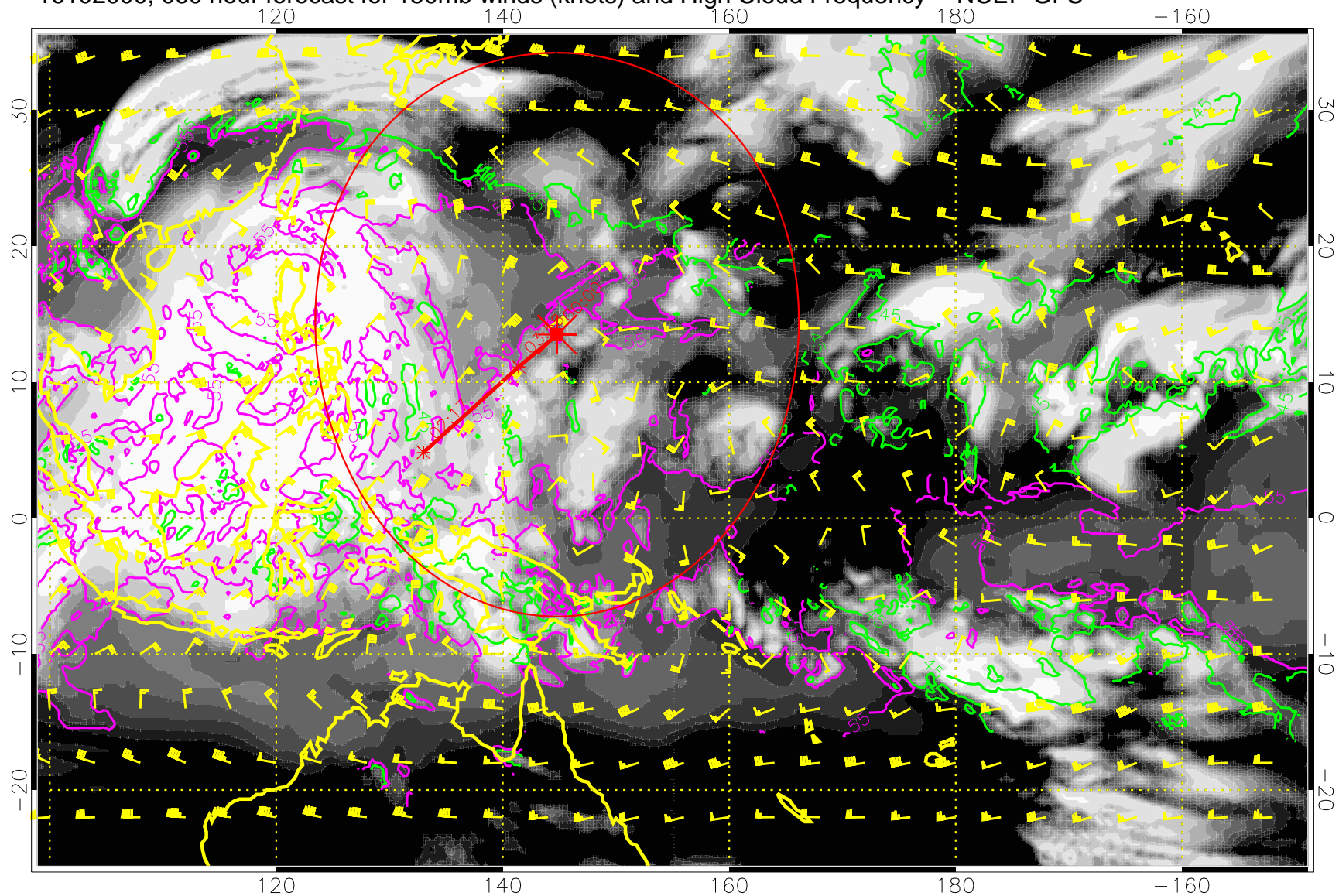


0.0 0.2 0.4 0.6 0.8 1.0
High Cloud Frequency

45 kft
55 kft

Range ring of 2304 km

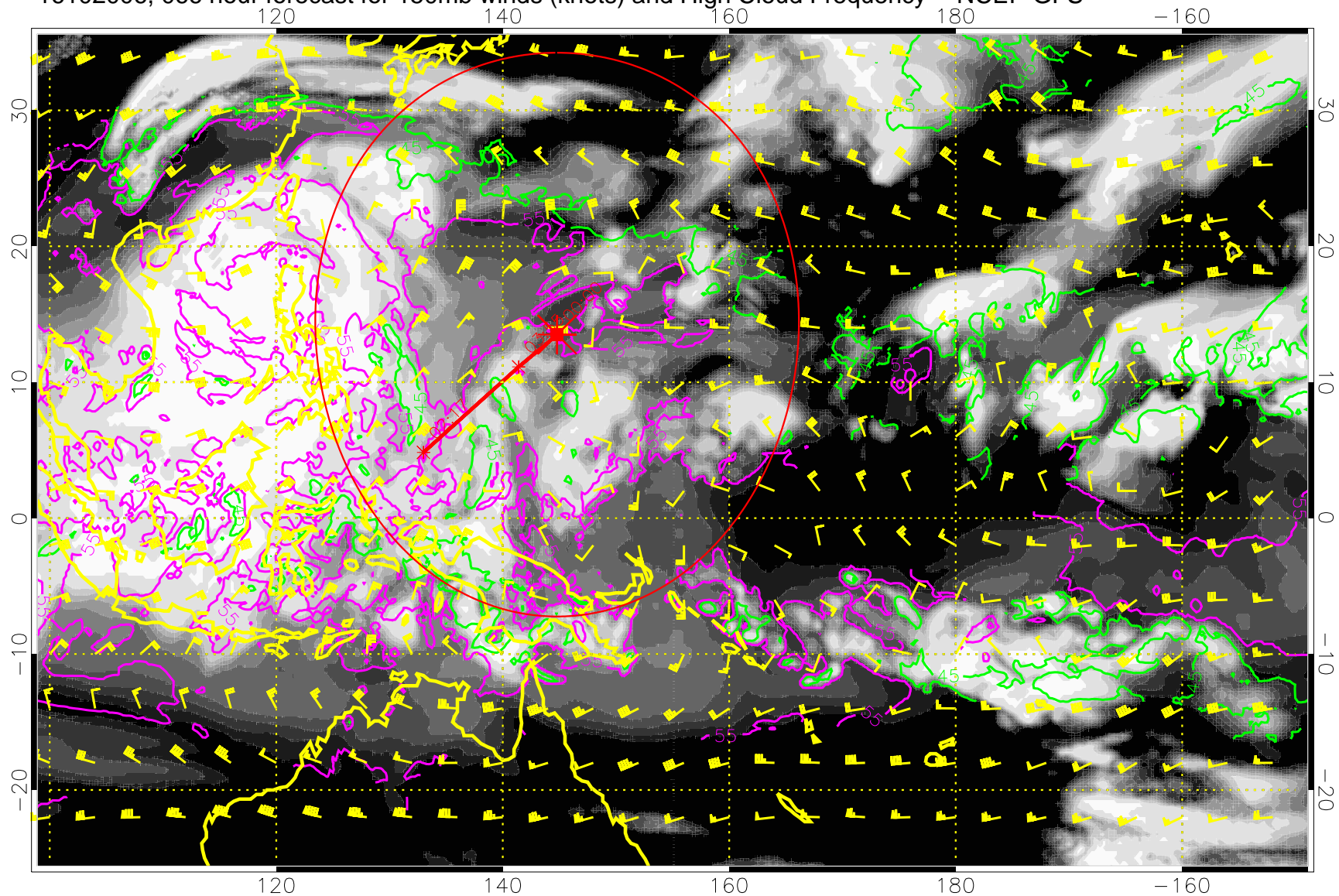
16102000, 060 hour forecast for 150mb winds (knots) and High Cloud Frequency -- NCEP GFS



45 kft
55 kft

Range ring of 2304 km

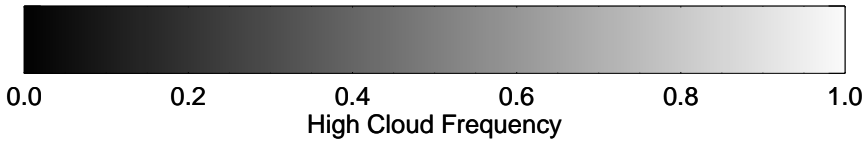
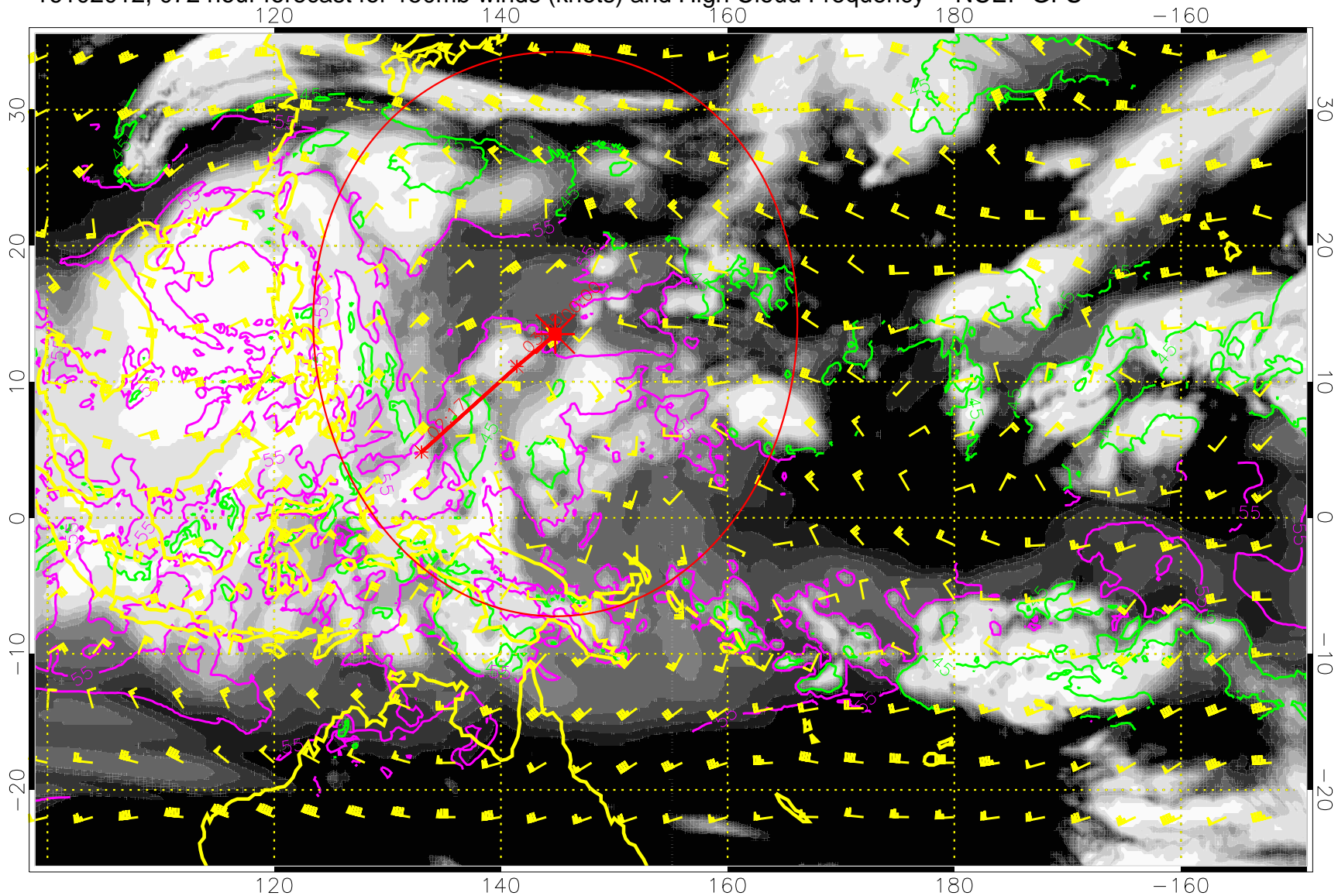
16102006, 066 hour forecast for 150mb winds (knots) and High Cloud Frequency -- NCEP GFS



45 kft
55 kft

Range ring of 2304 km

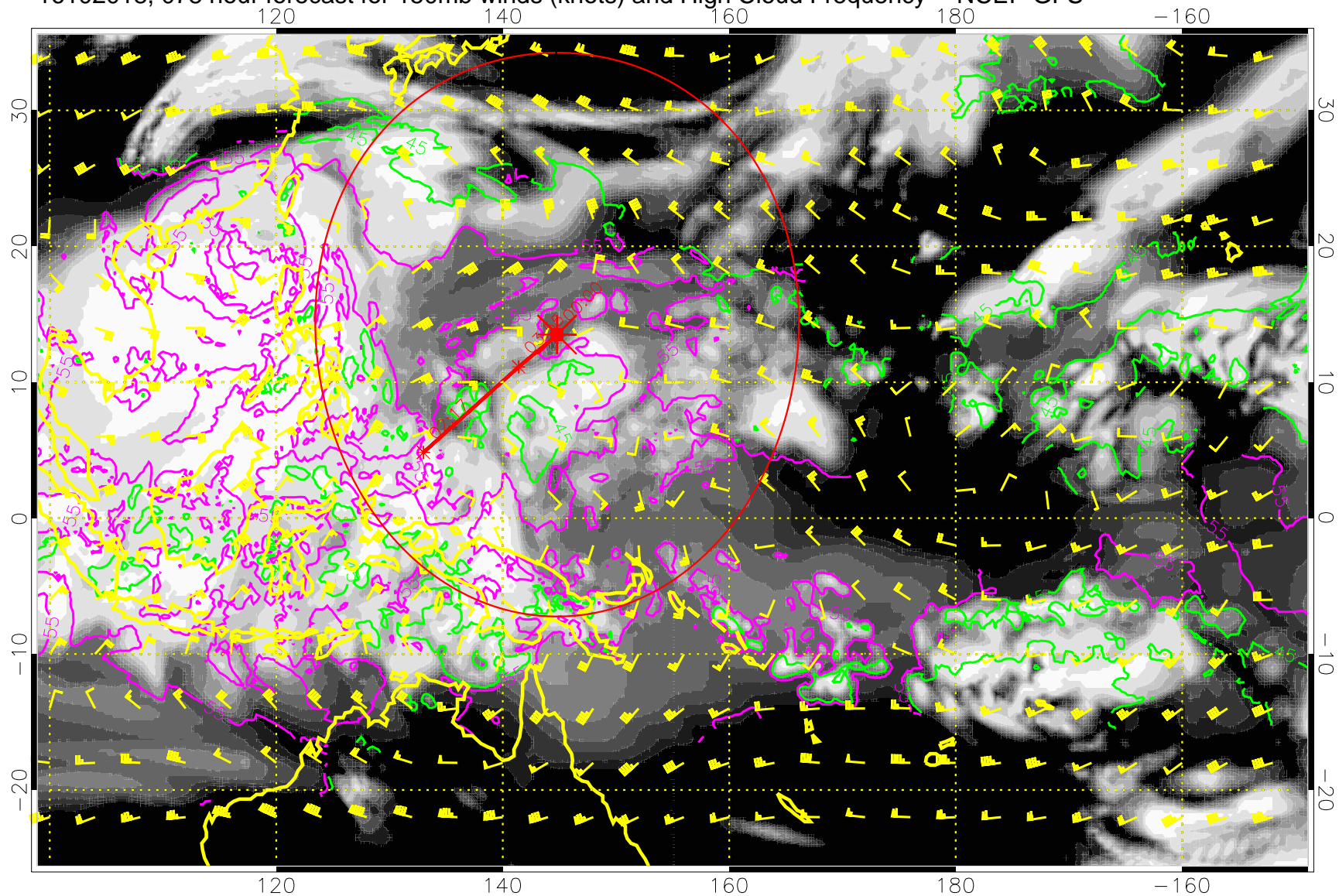
16102012, 072 hour forecast for 150mb winds (knots) and High Cloud Frequency -- NCEP GFS



45 kft
55 kft

Range ring of 2304 km

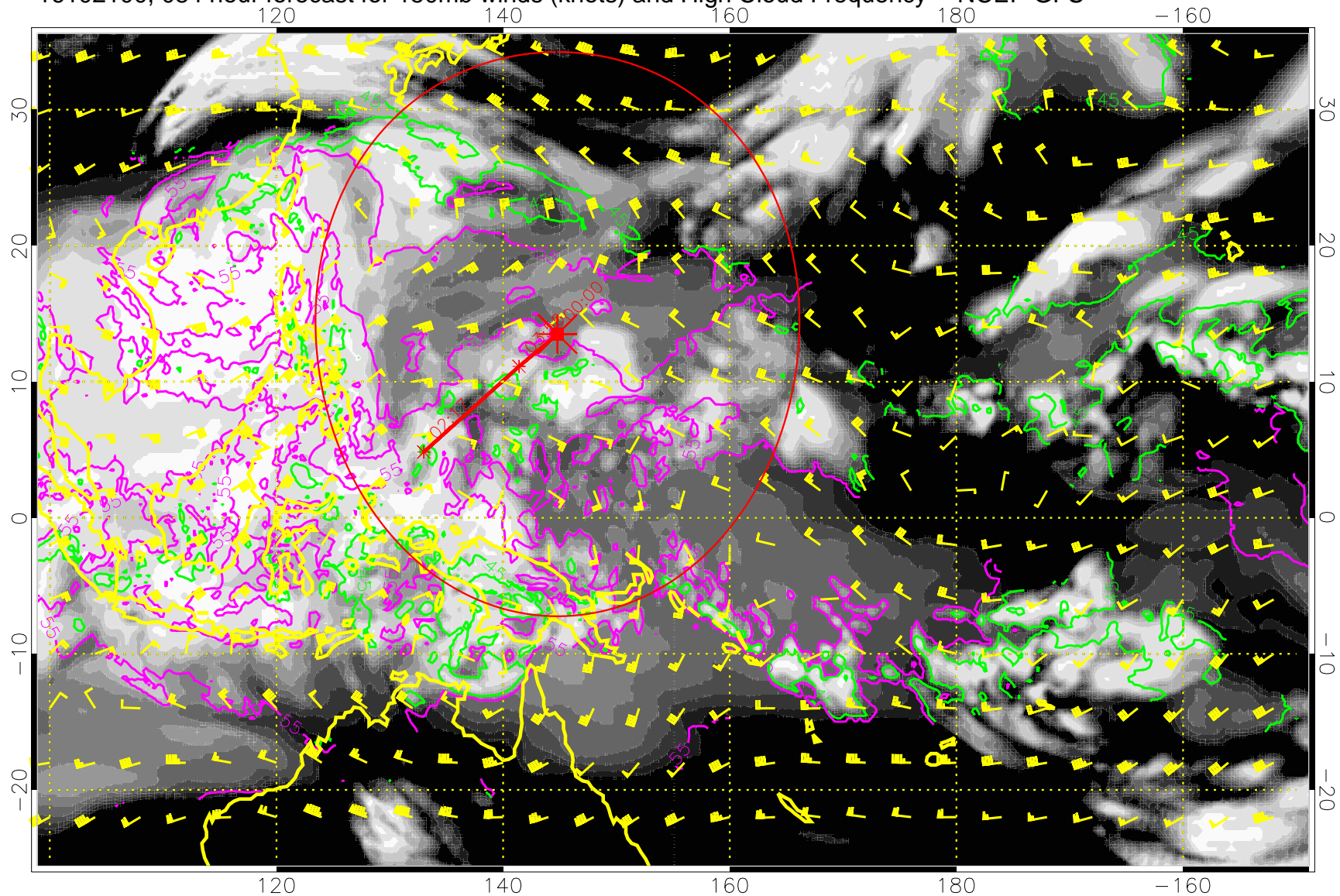
16102018, 078 hour forecast for 150mb winds (knots) and High Cloud Frequency -- NCEP GFS



45 kft
55 kft

Range ring of 2304 km

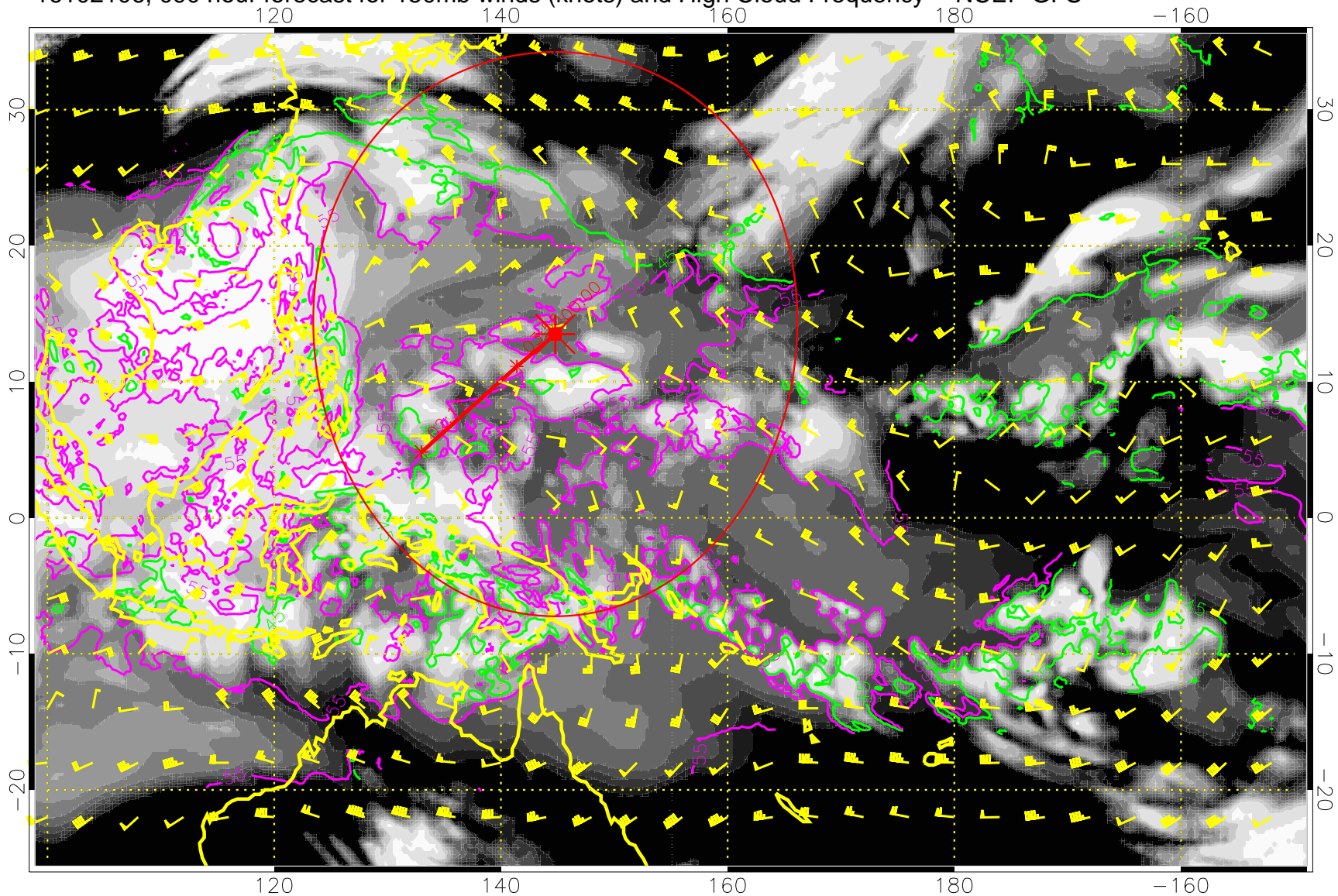
16102100, 084 hour forecast for 150mb winds (knots) and High Cloud Frequency -- NCEP GFS



45 kft
55 kft

Range ring of 2304 km

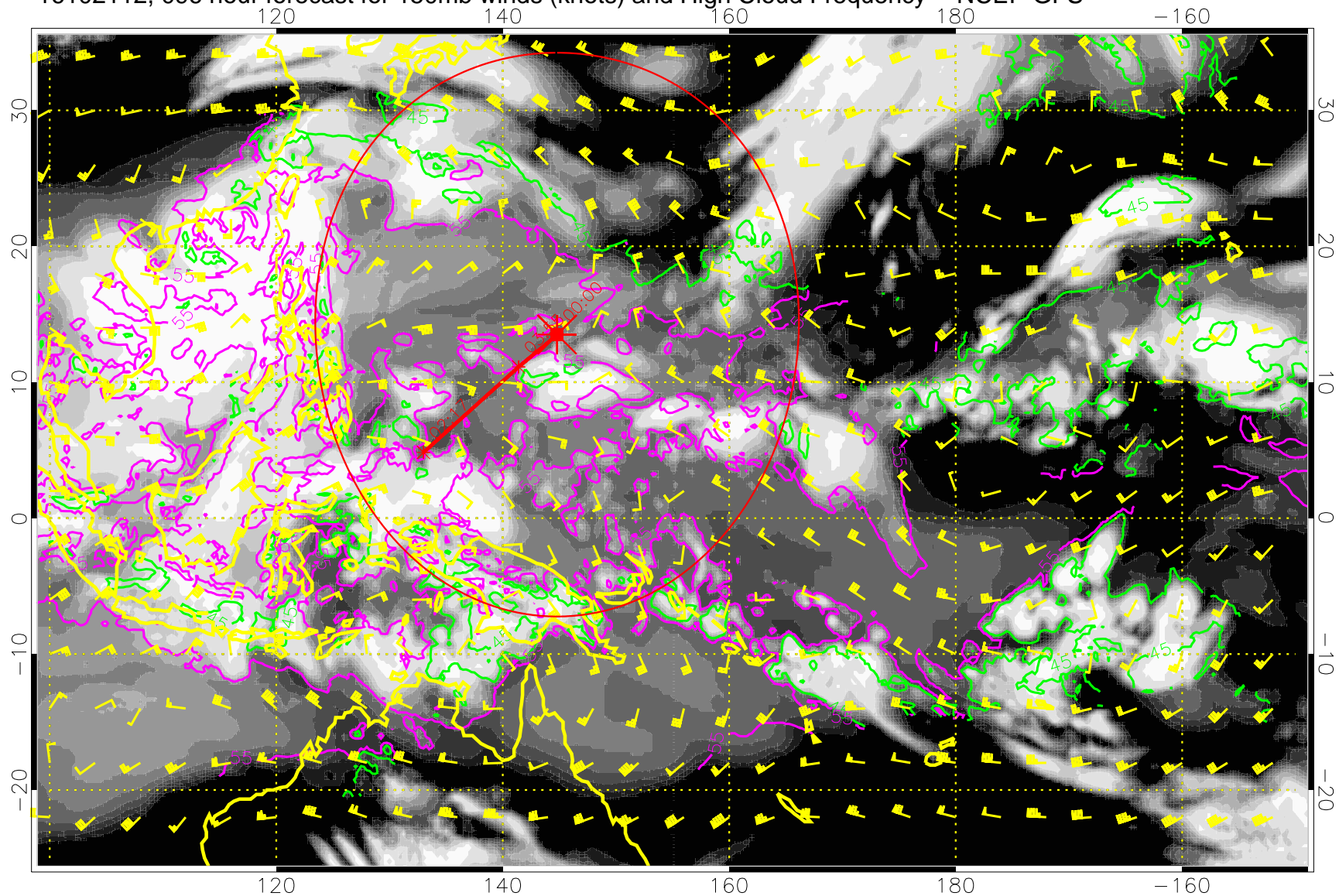
16102106, 090 hour forecast for 150mb winds (knots) and High Cloud Frequency -- NCEP GFS



45 kft
55 kft

Range ring of 2304 km

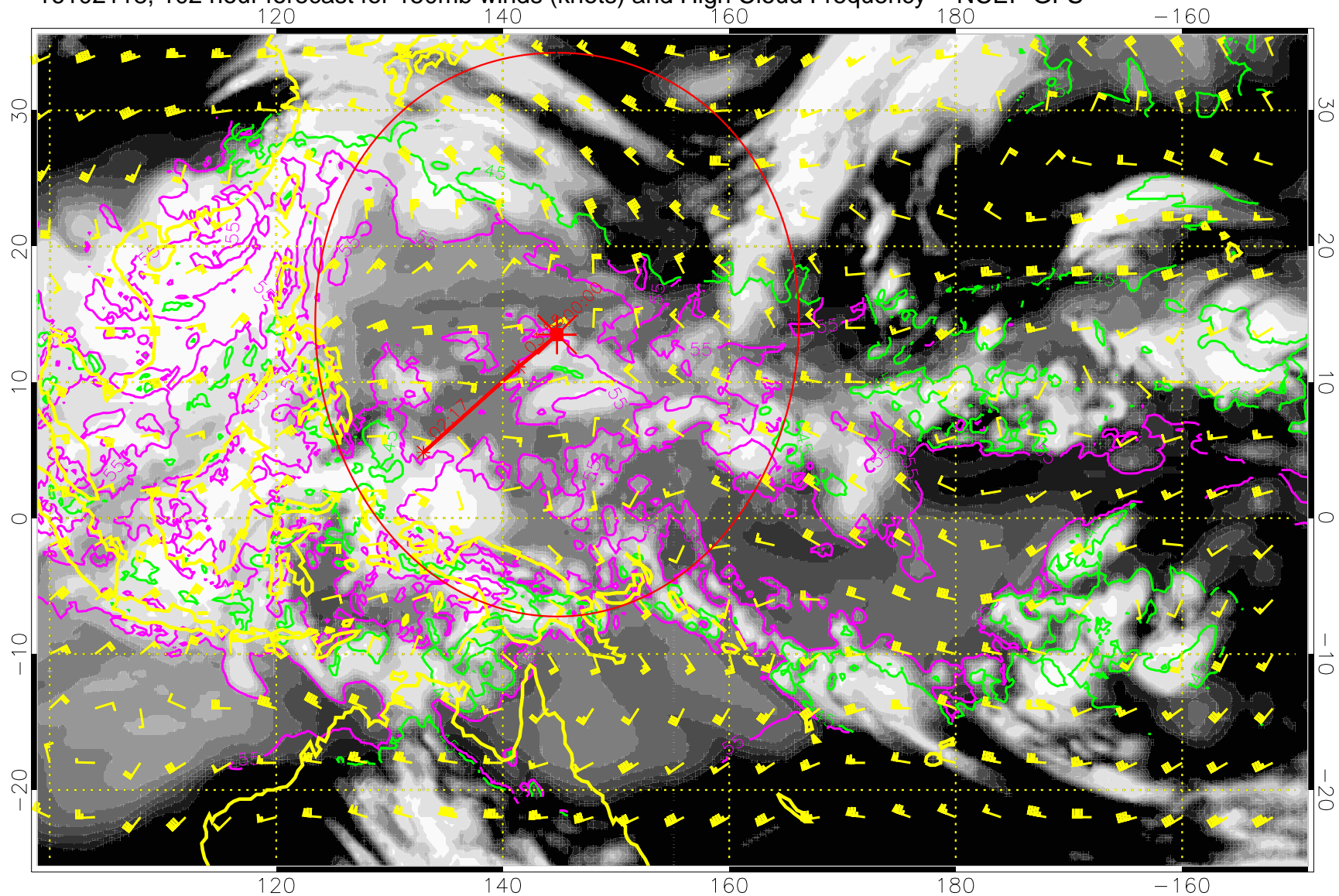
16102112, 096 hour forecast for 150mb winds (knots) and High Cloud Frequency -- NCEP GFS



45 kft
55 kft

Range ring of 2304 km

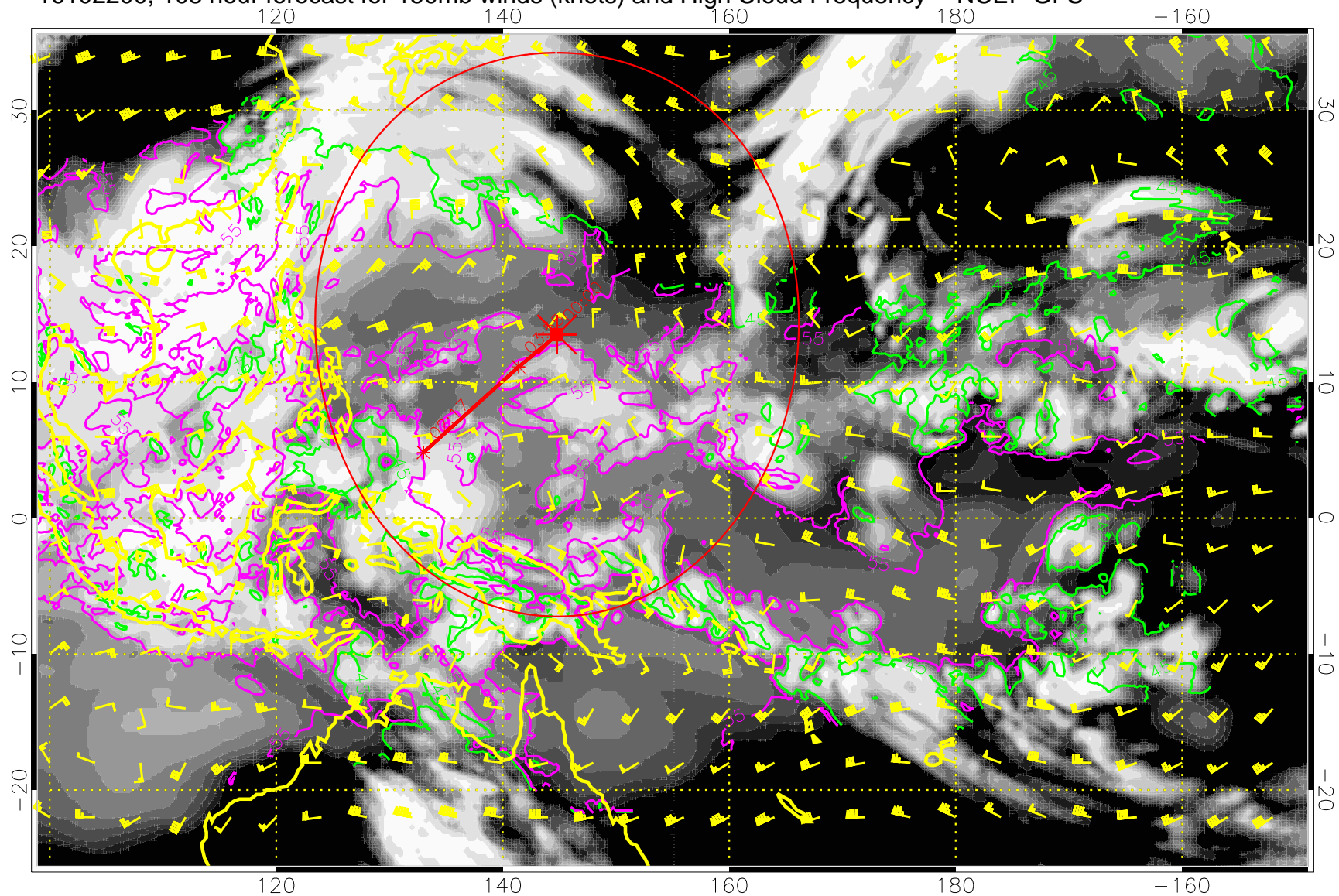
16102118, 102 hour forecast for 150mb winds (knots) and High Cloud Frequency -- NCEP GFS



45 kft
55 kft

Range ring of 2304 km

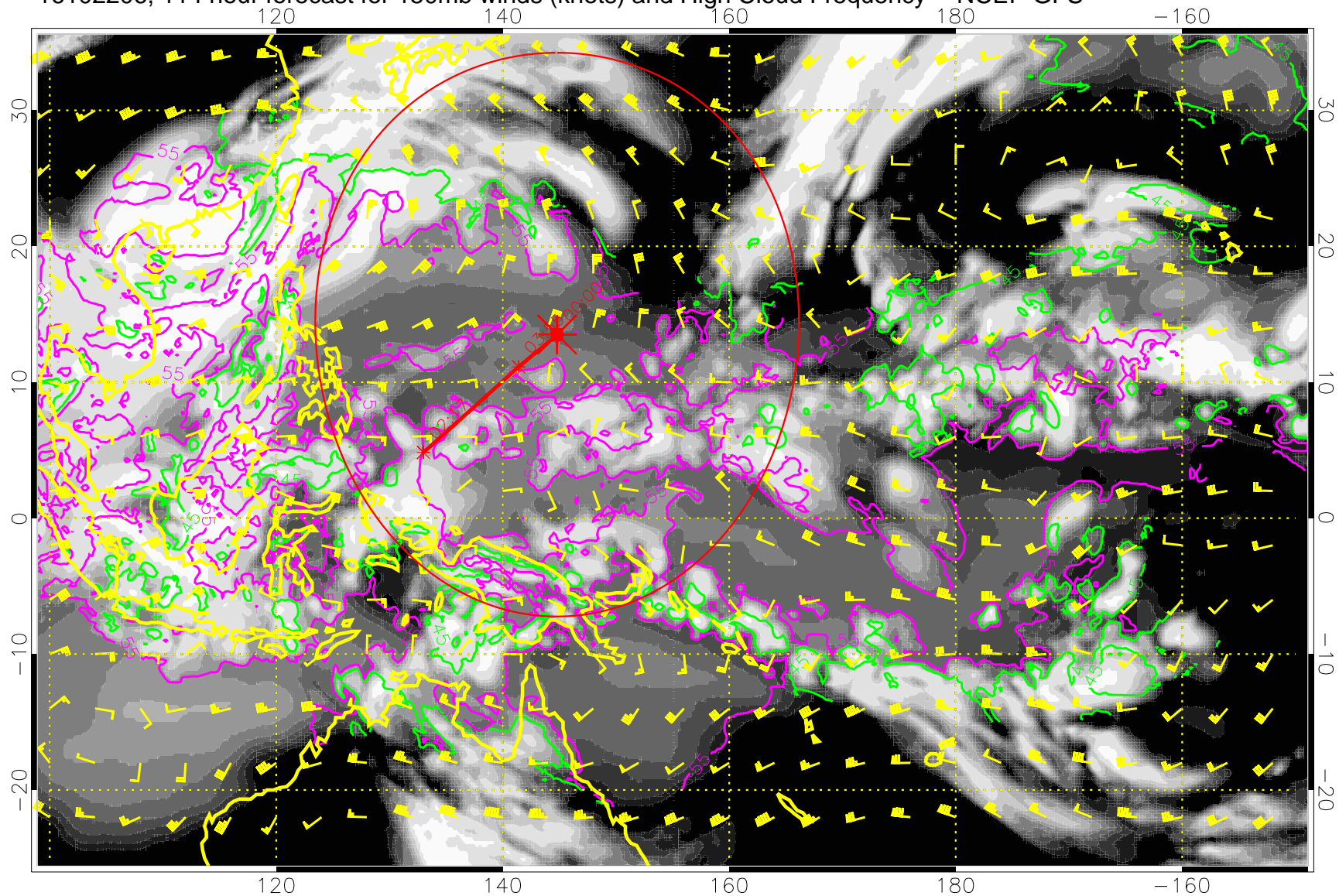
16102200, 108 hour forecast for 150mb winds (knots) and High Cloud Frequency -- NCEP GFS



45 kft
55 kft

Range ring of 2304 km

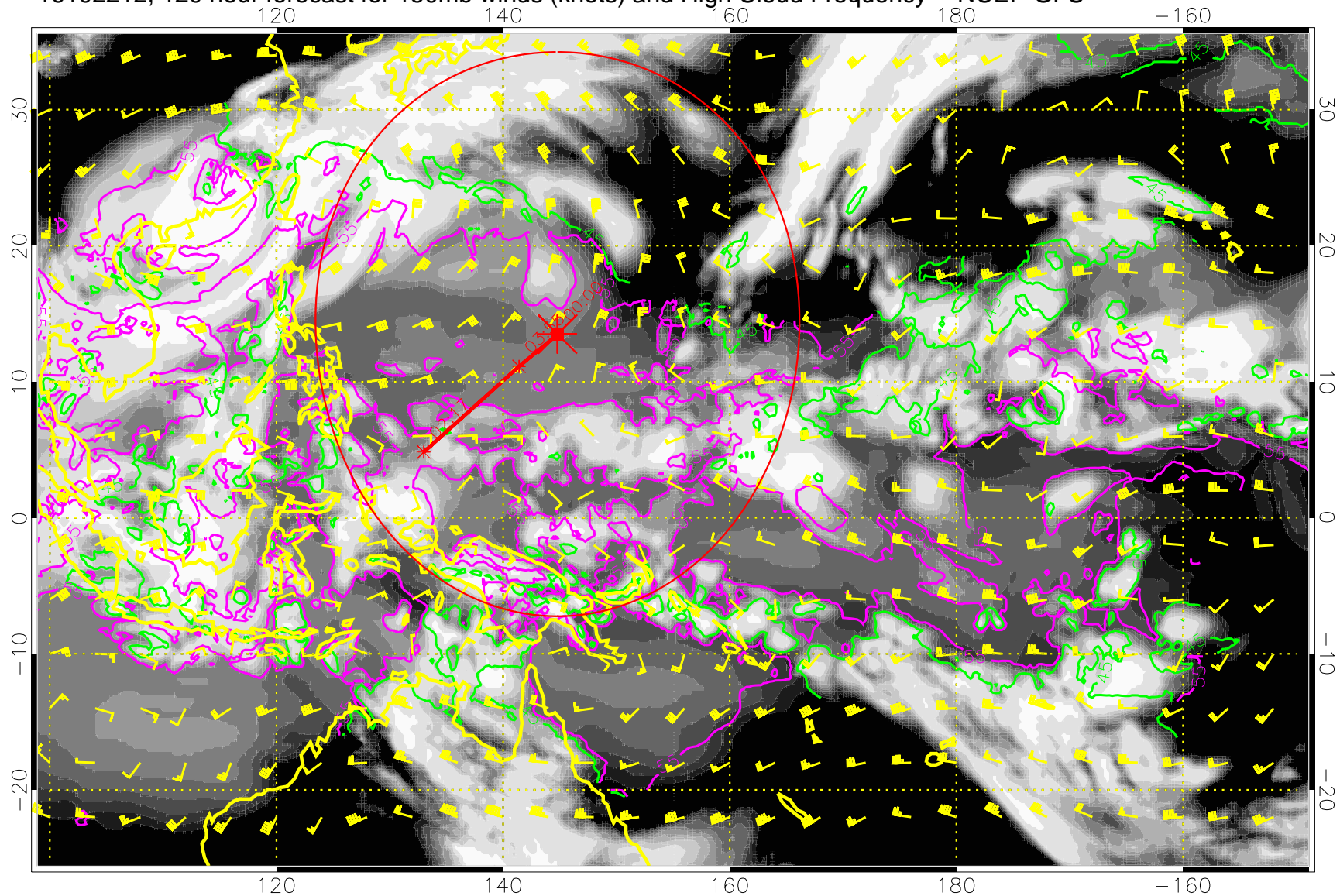
16102206, 114 hour forecast for 150mb winds (knots) and High Cloud Frequency -- NCEP GFS



45 kft
55 kft

Range ring of 2304 km

16102212, 120 hour forecast for 150mb winds (knots) and High Cloud Frequency -- NCEP GFS



45 kft
55 kft

Range ring of 2304 km