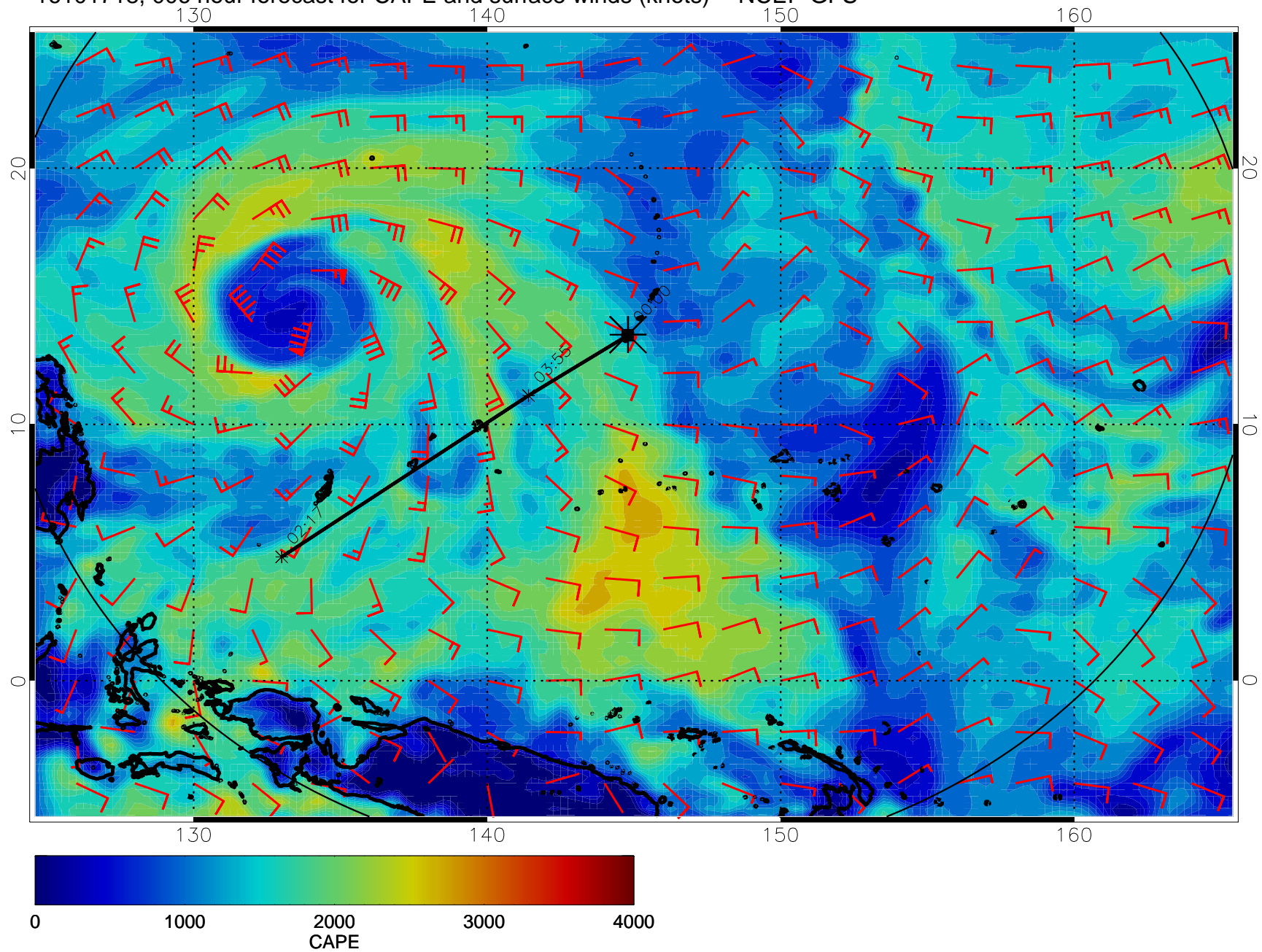
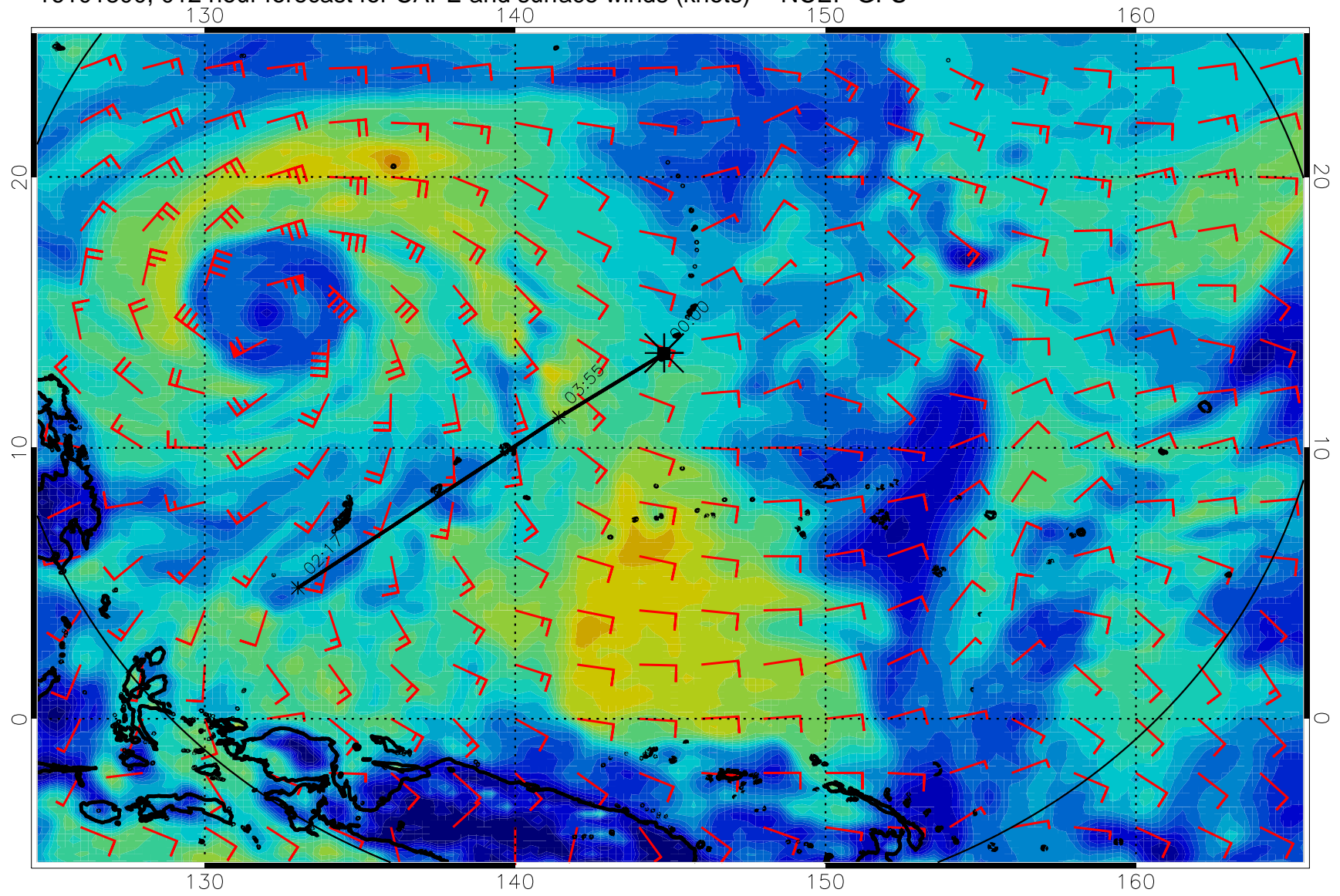


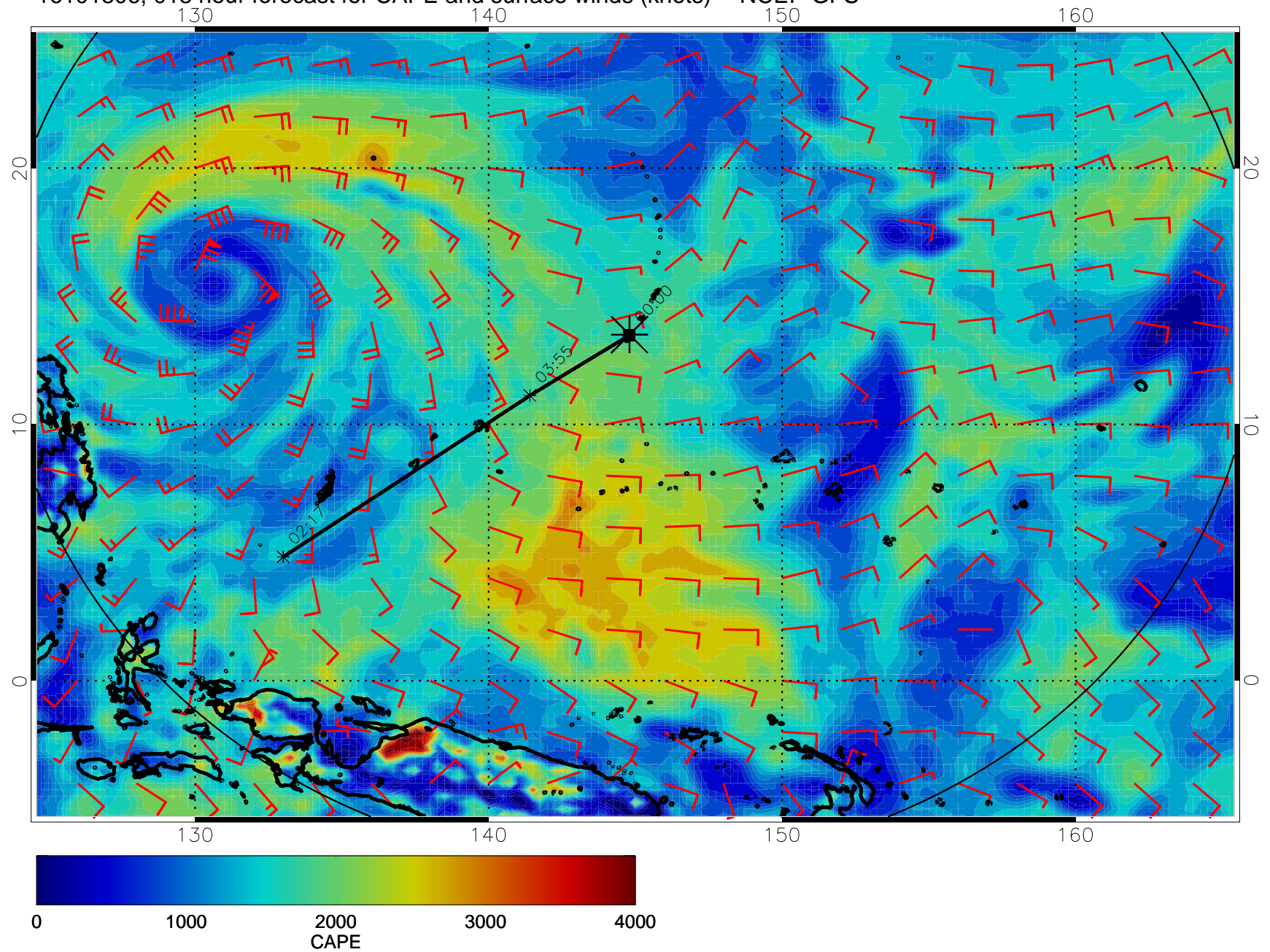
16101718, 006 hour forecast for CAPE and surface winds (knots) -- NCEP GFS



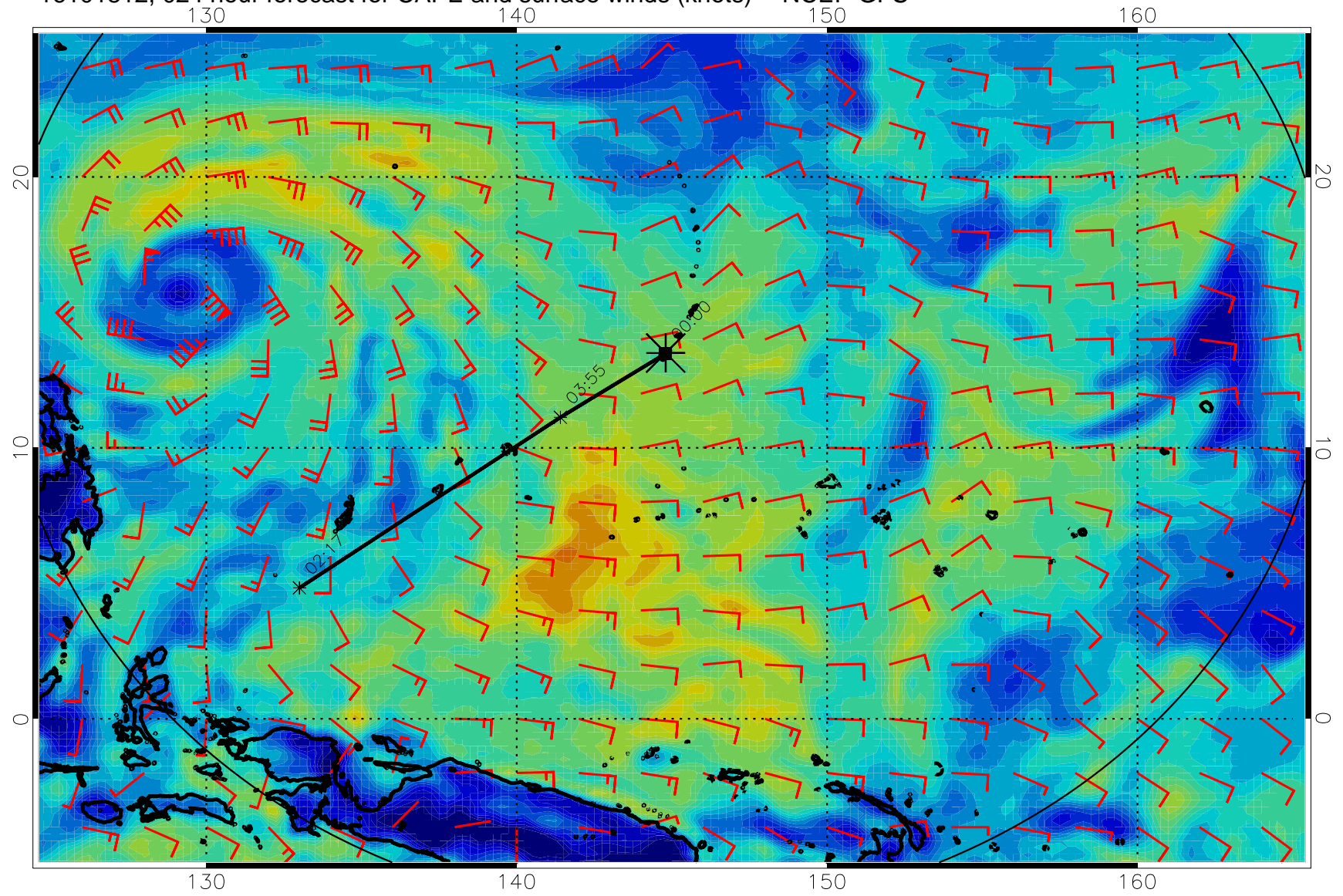
16101800, 012 hour forecast for CAPE and surface winds (knots) -- NCEP GFS



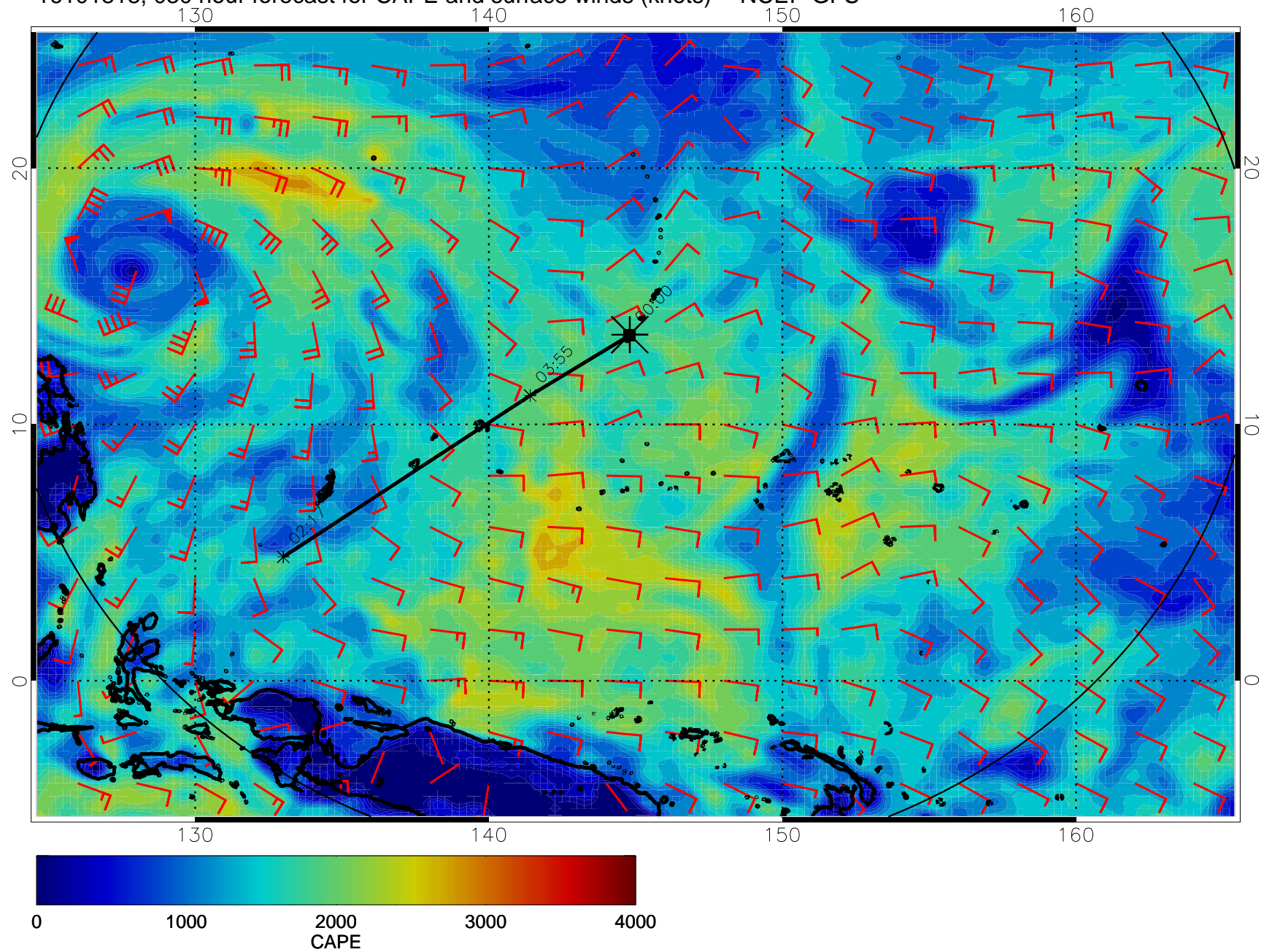
16101806, 018 hour forecast for CAPE and surface winds (knots) -- NCEP GFS



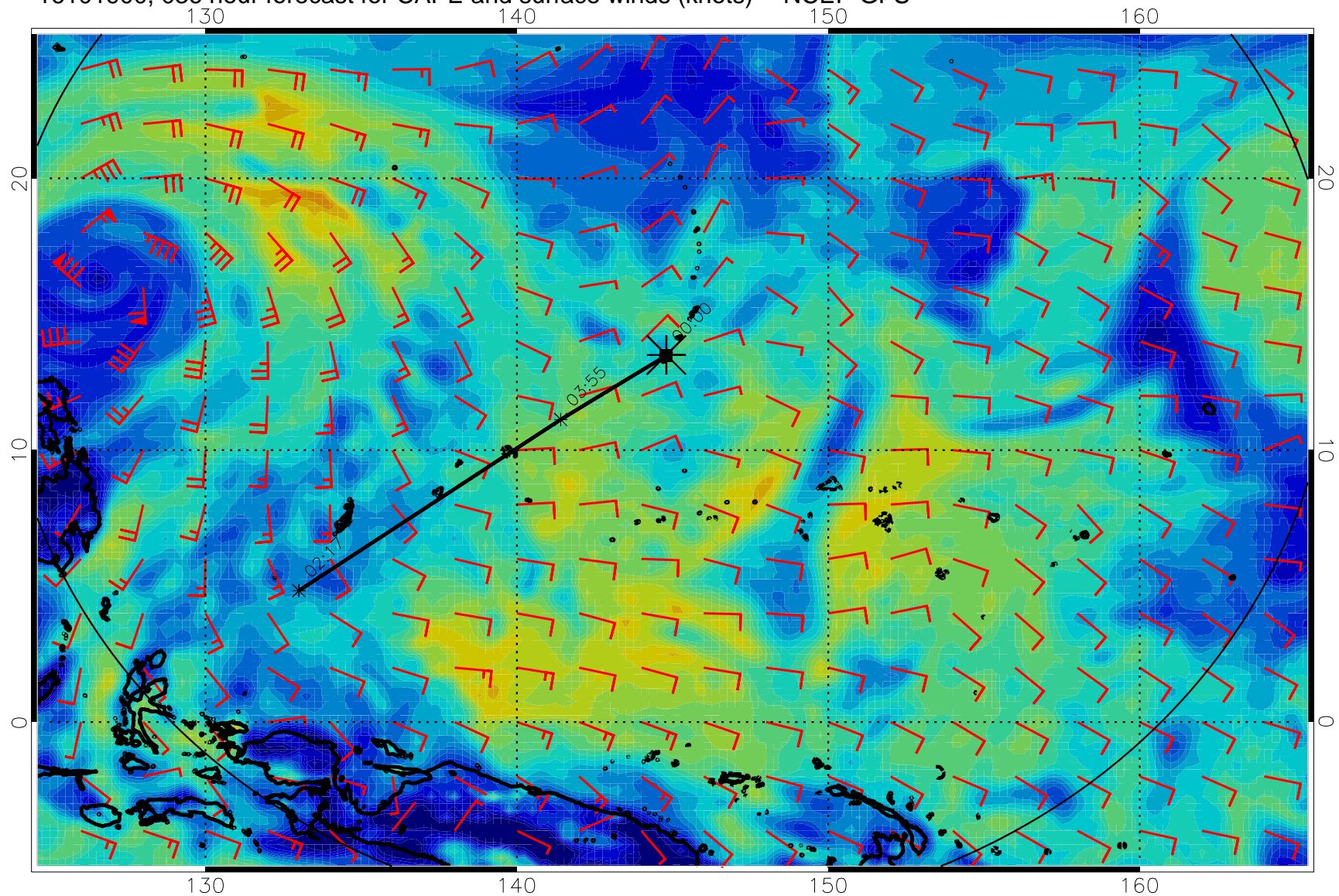
16101812, 024 hour forecast for CAPE and surface winds (knots) -- NCEP GFS



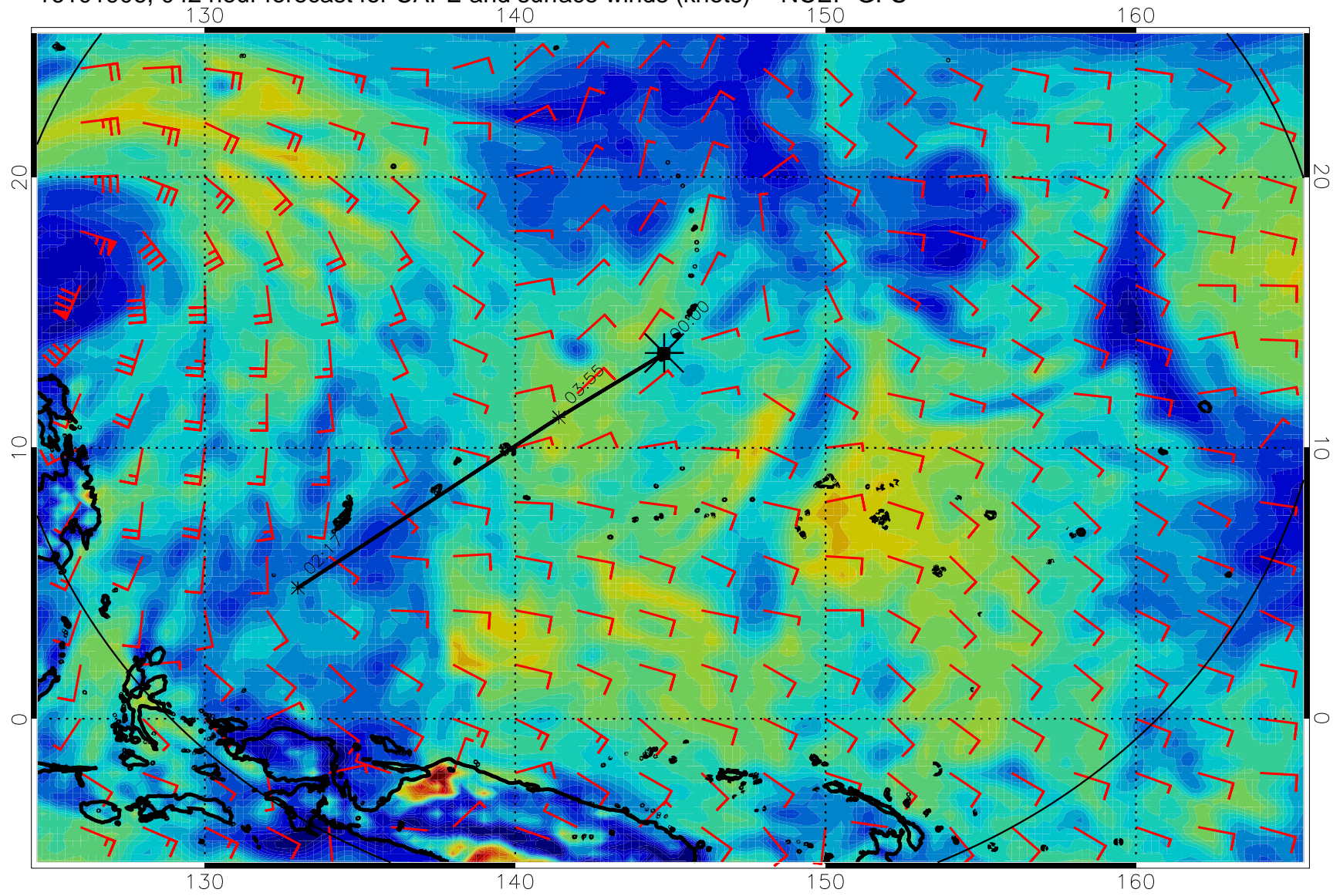
16101818, 030 hour forecast for CAPE and surface winds (knots) -- NCEP GFS



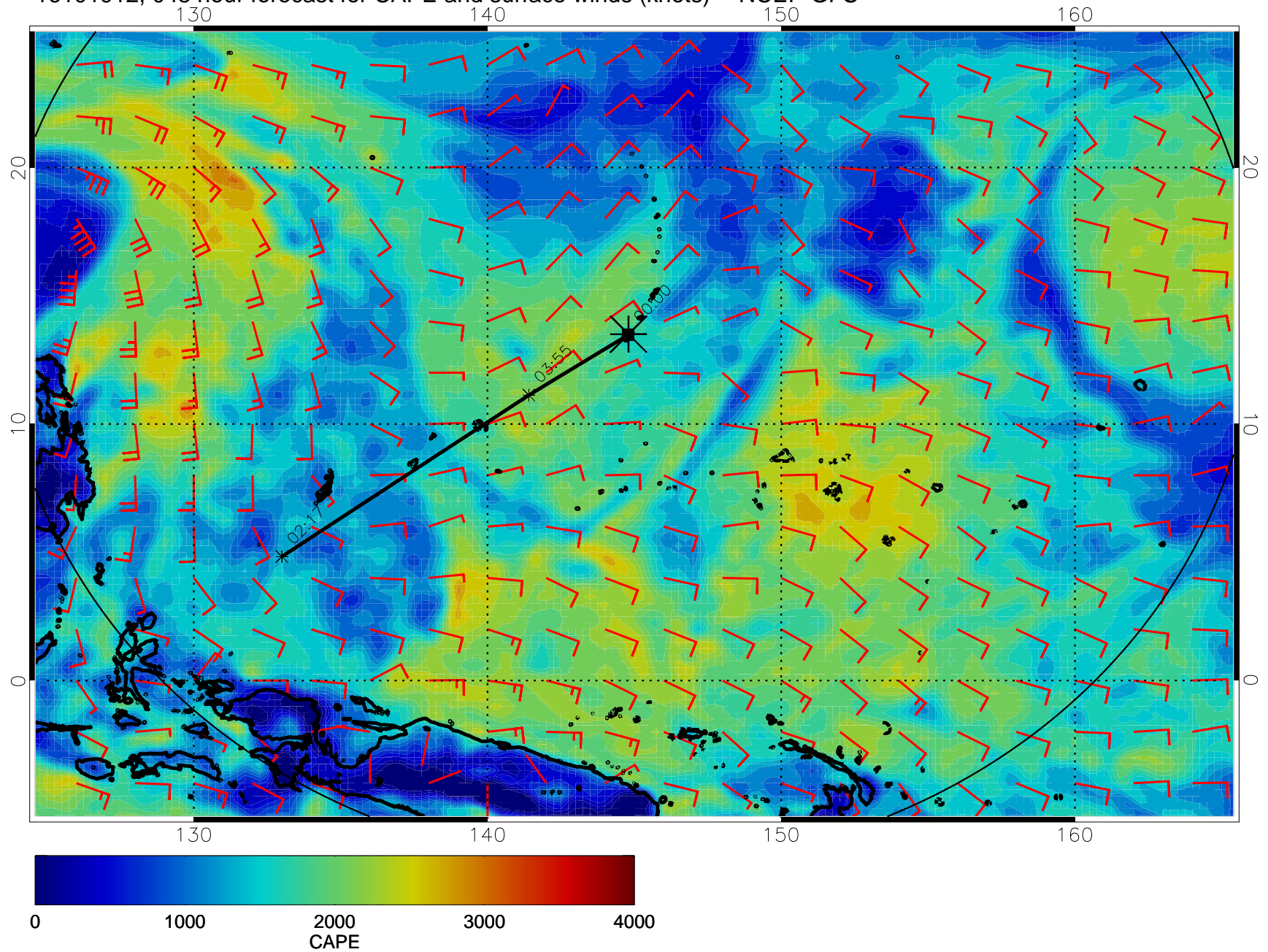
16101900, 036 hour forecast for CAPE and surface winds (knots) -- NCEP GFS



16101906, 042 hour forecast for CAPE and surface winds (knots) -- NCEP GFS

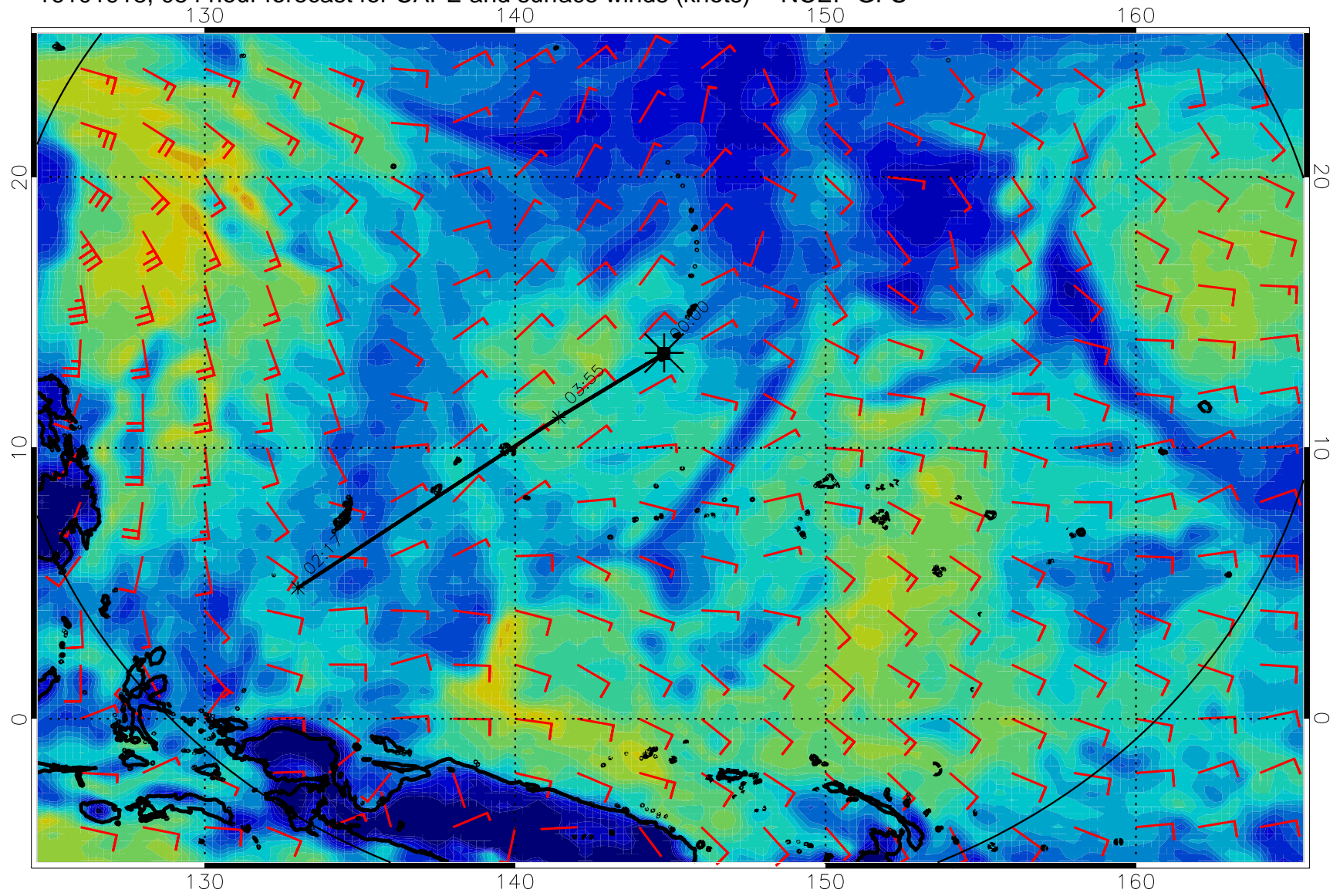


16101912, 048 hour forecast for CAPE and surface winds (knots) -- NCEP GFS

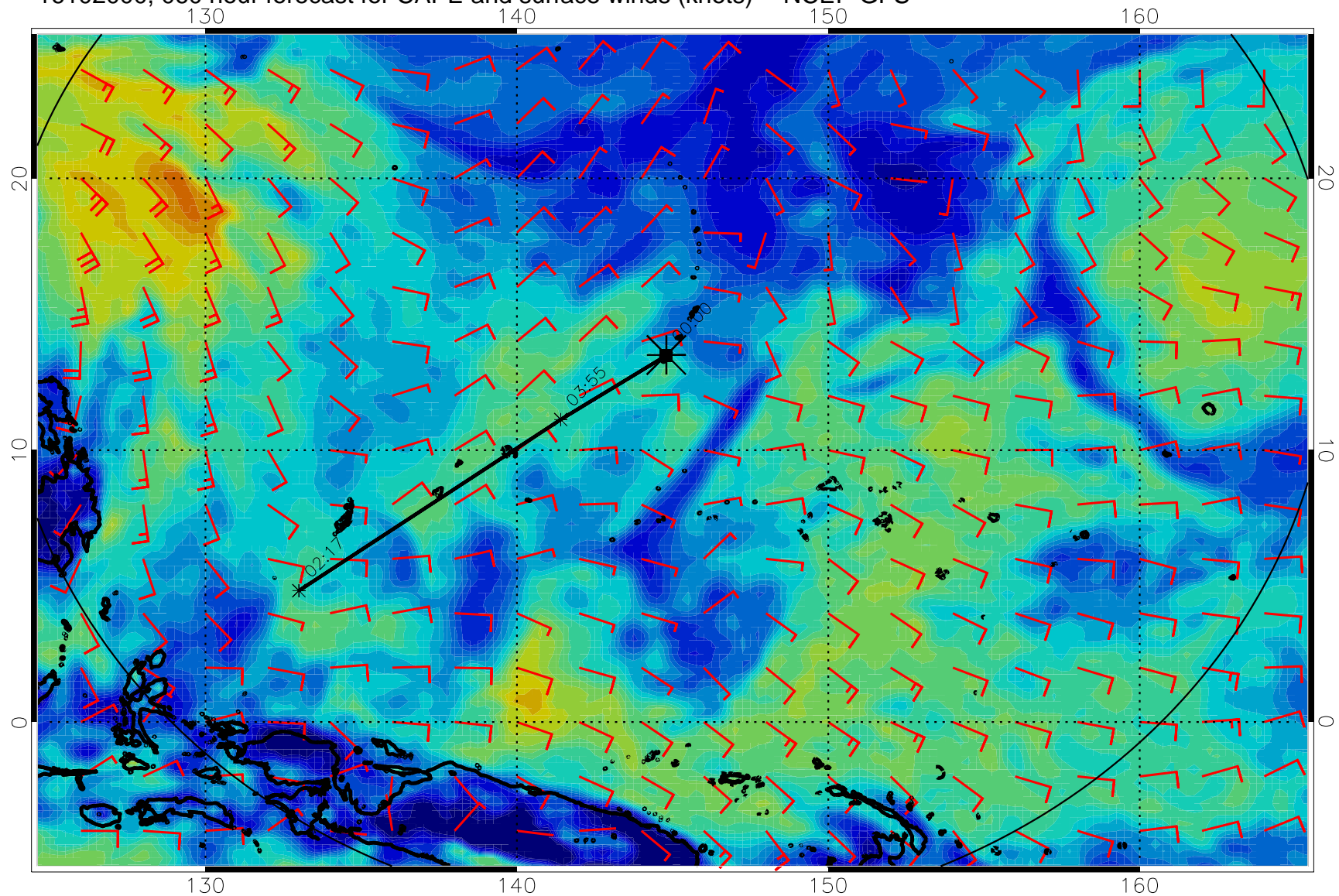




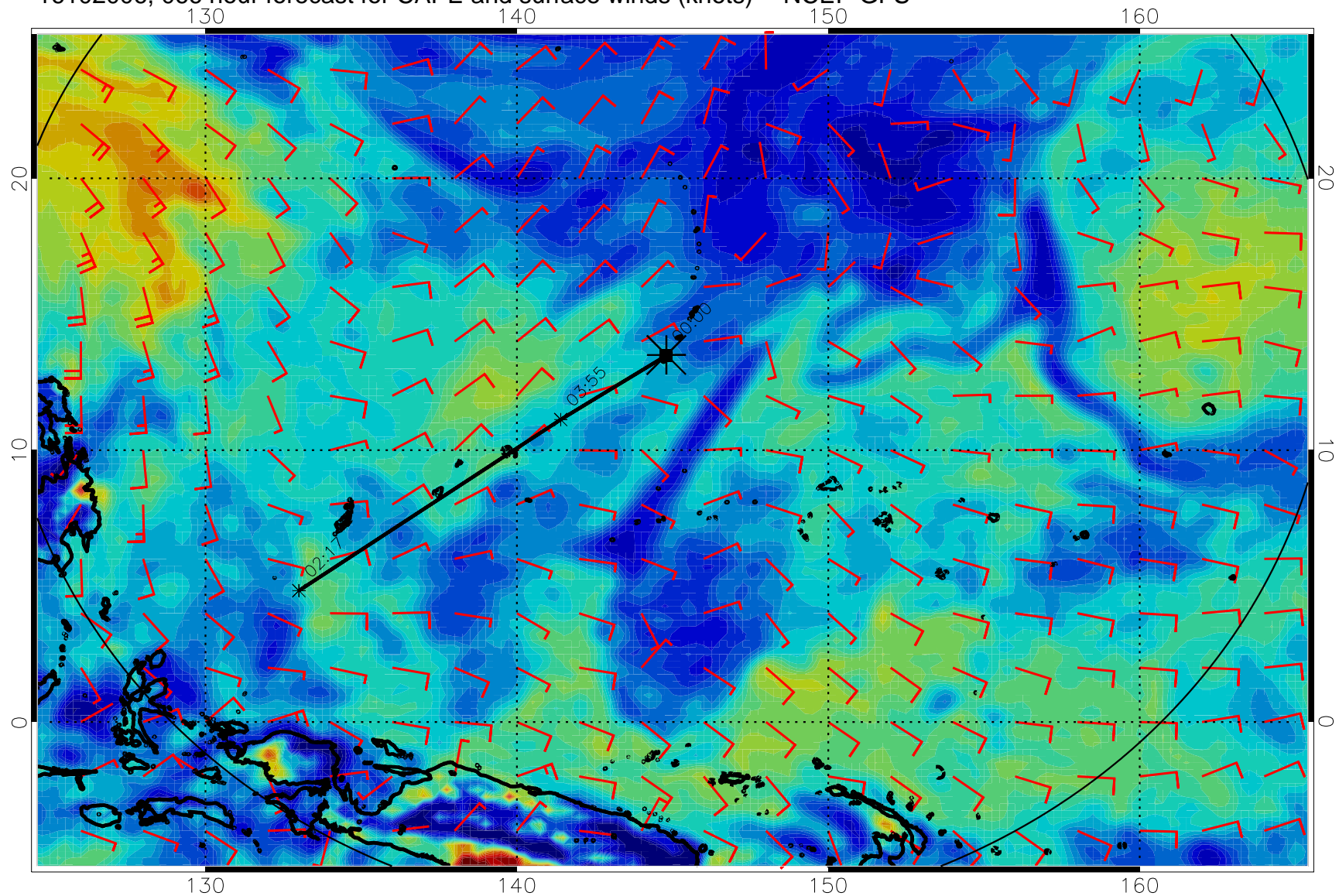
16101918, 054 hour forecast for CAPE and surface winds (knots) -- NCEP GFS



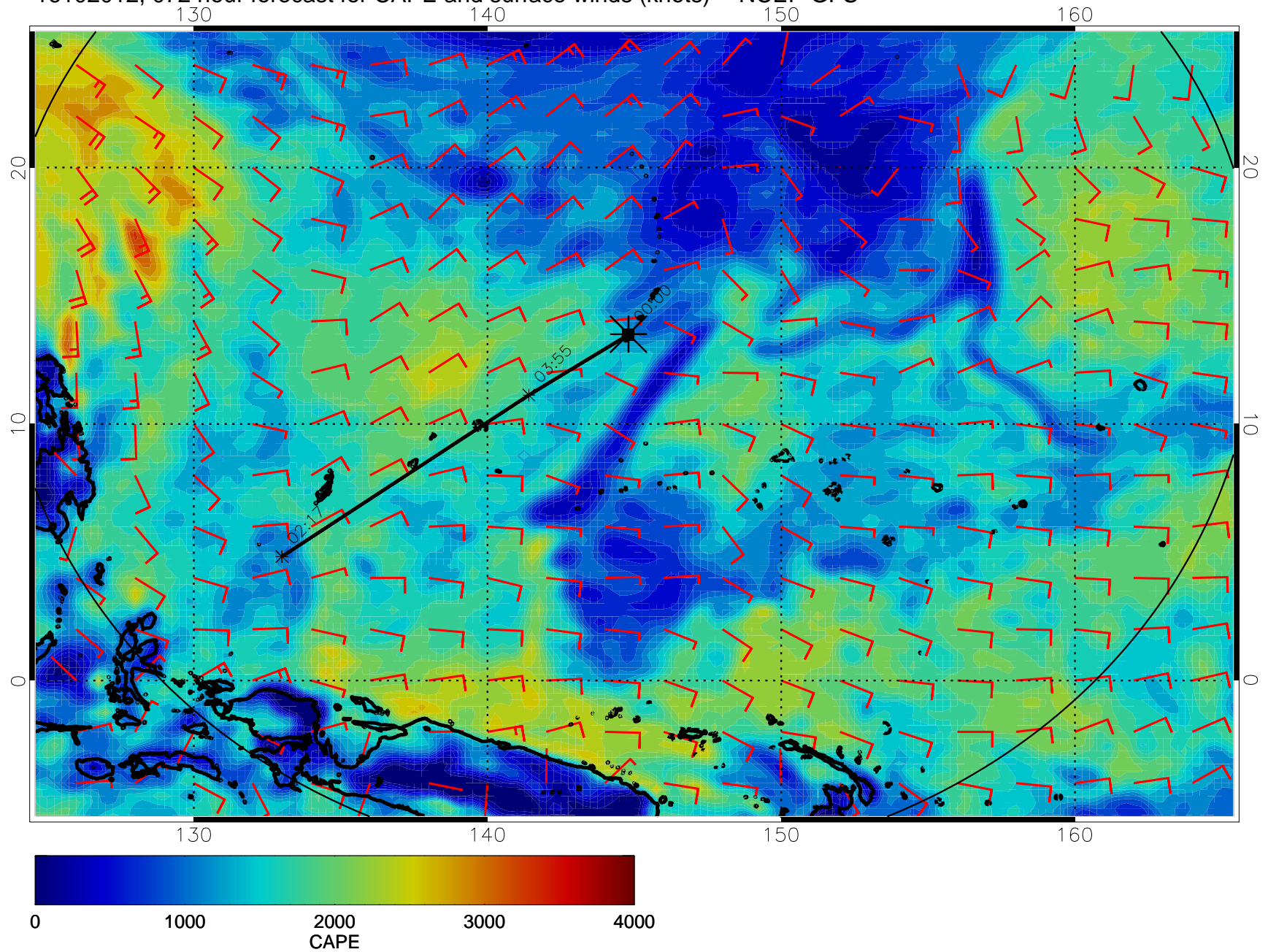
16102000, 060 hour forecast for CAPE and surface winds (knots) -- NCEP GFS



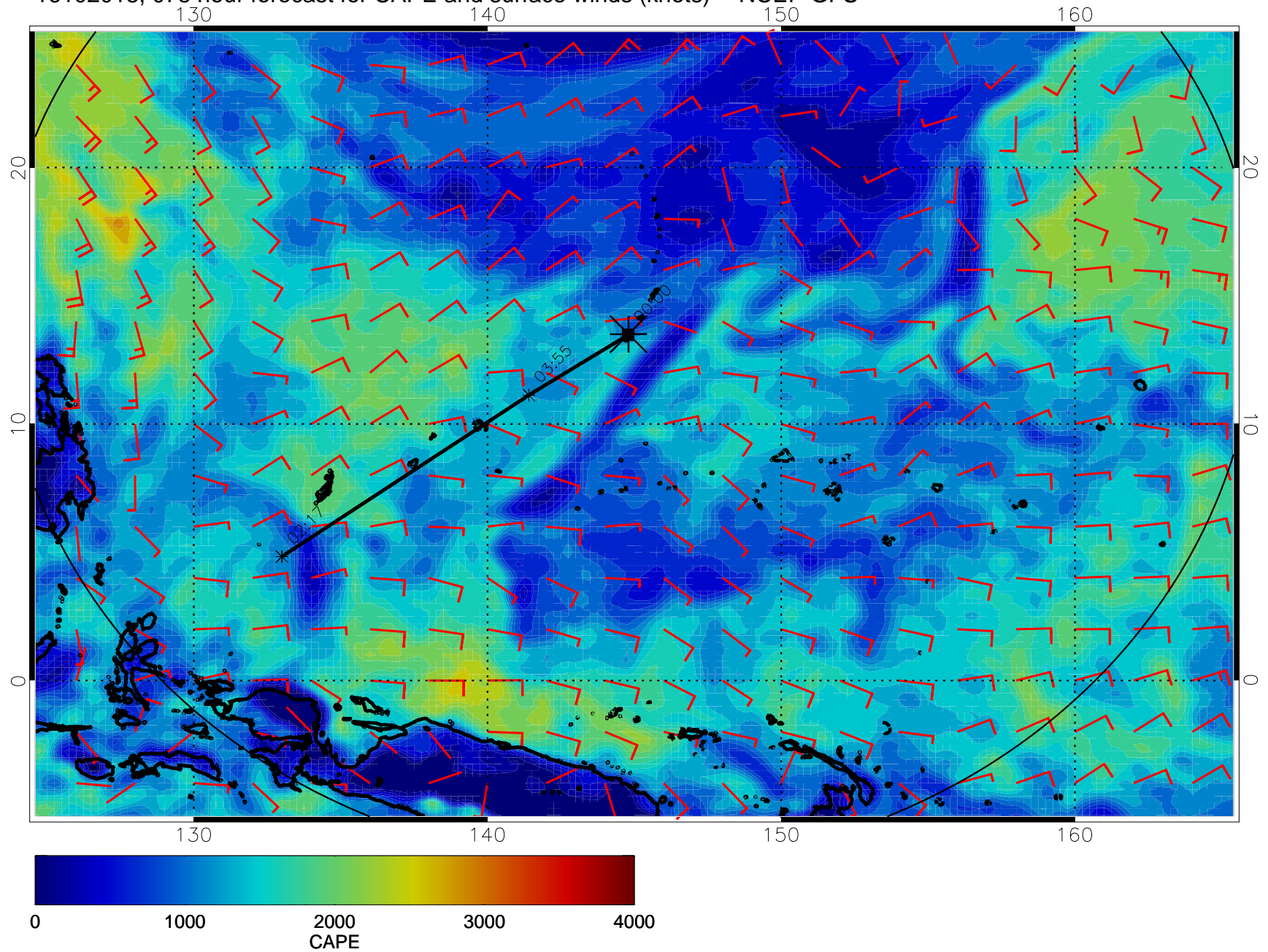
16102006, 066 hour forecast for CAPE and surface winds (knots) -- NCEP GFS



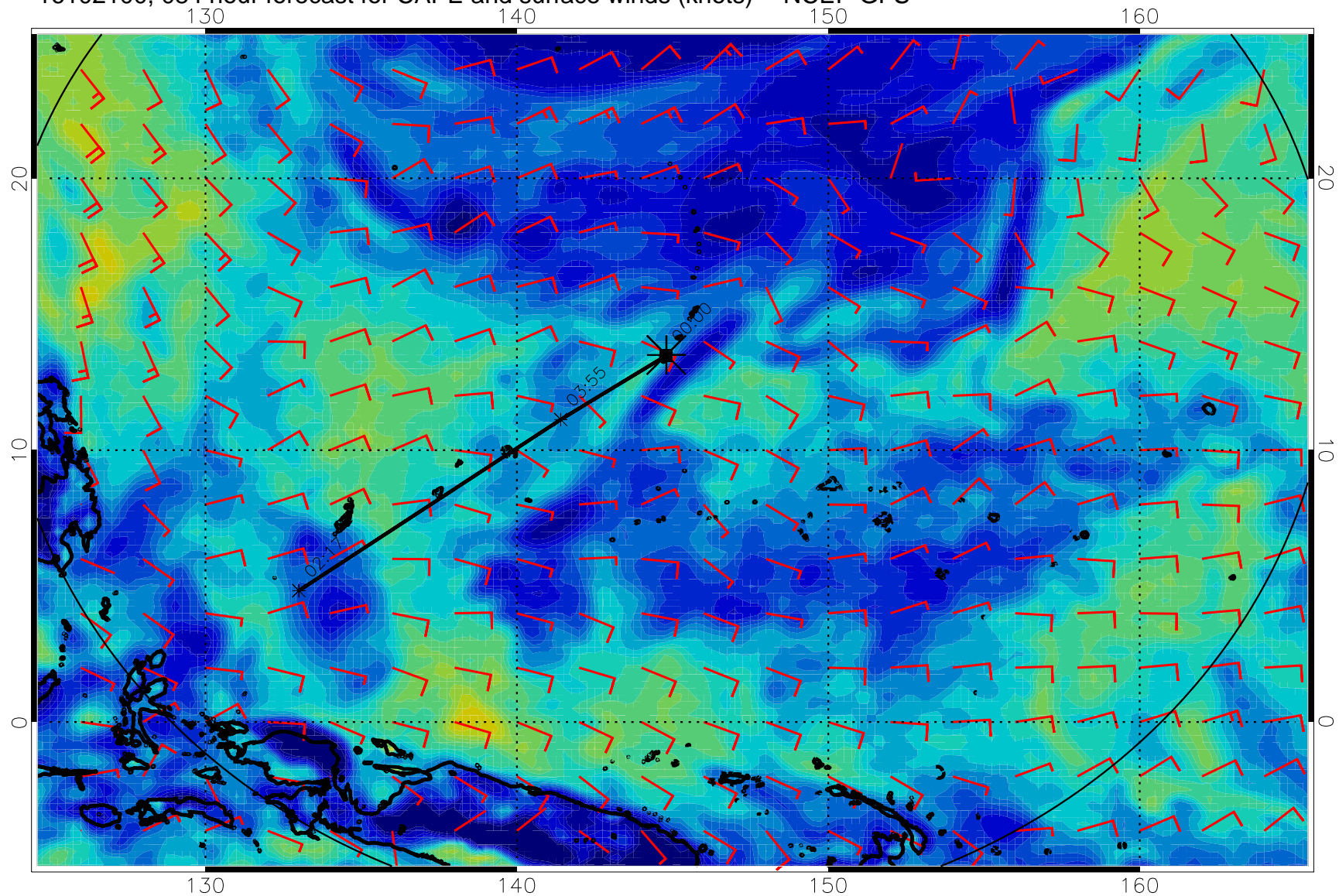
16102012, 072 hour forecast for CAPE and surface winds (knots) -- NCEP GFS



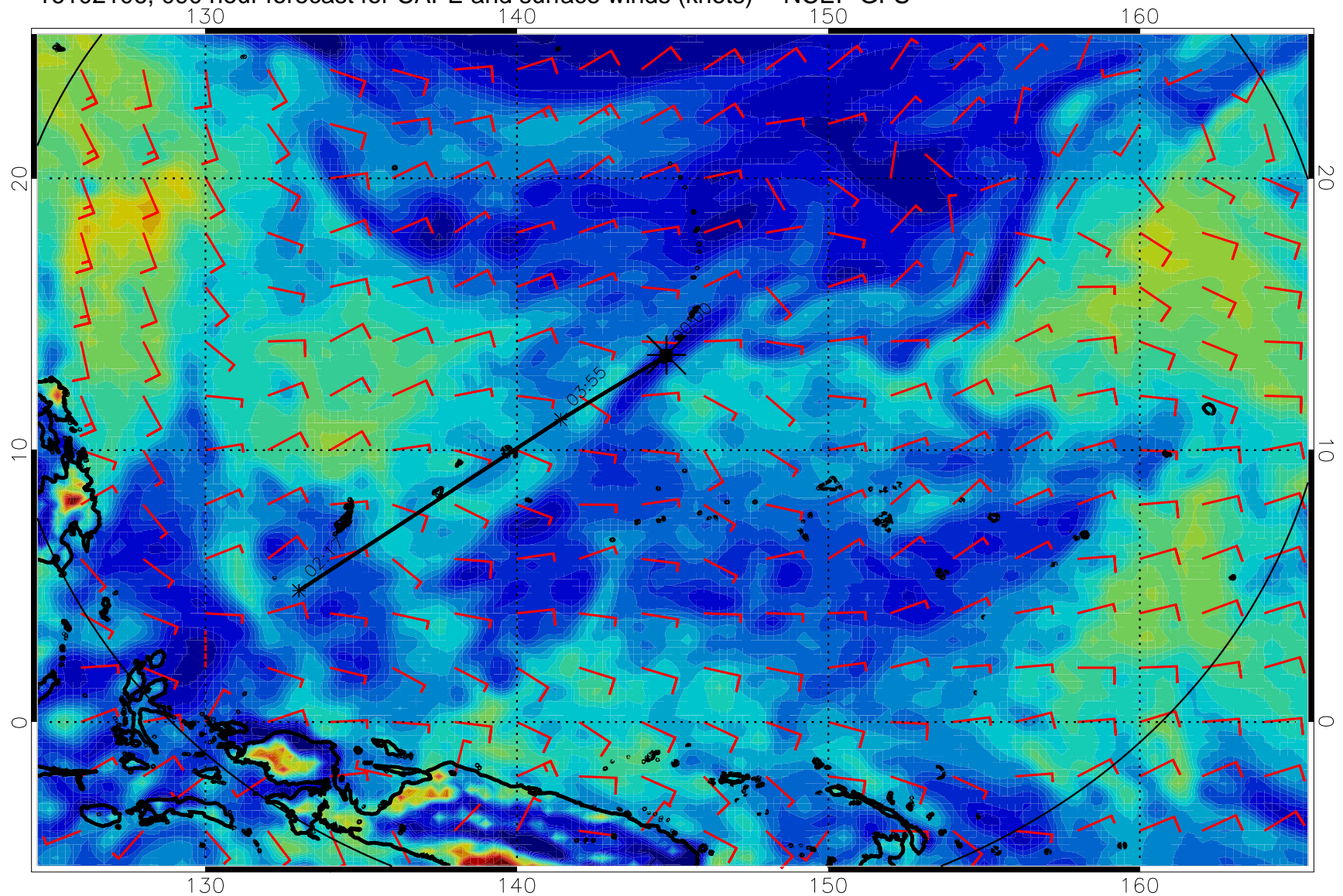
16102018, 078 hour forecast for CAPE and surface winds (knots) -- NCEP GFS



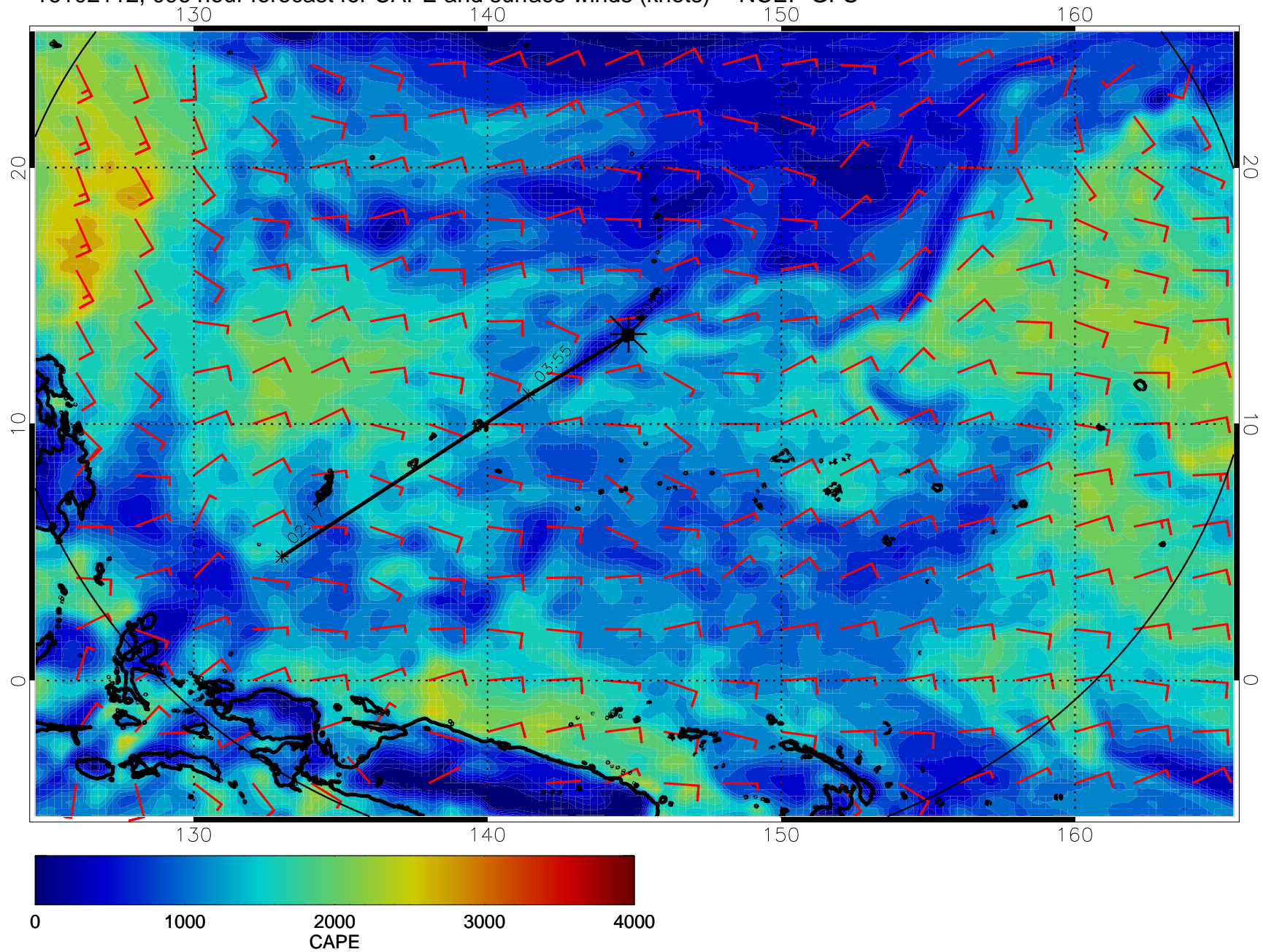
16102100, 084 hour forecast for CAPE and surface winds (knots) -- NCEP GFS



16102106, 090 hour forecast for CAPE and surface winds (knots) -- NCEP GFS

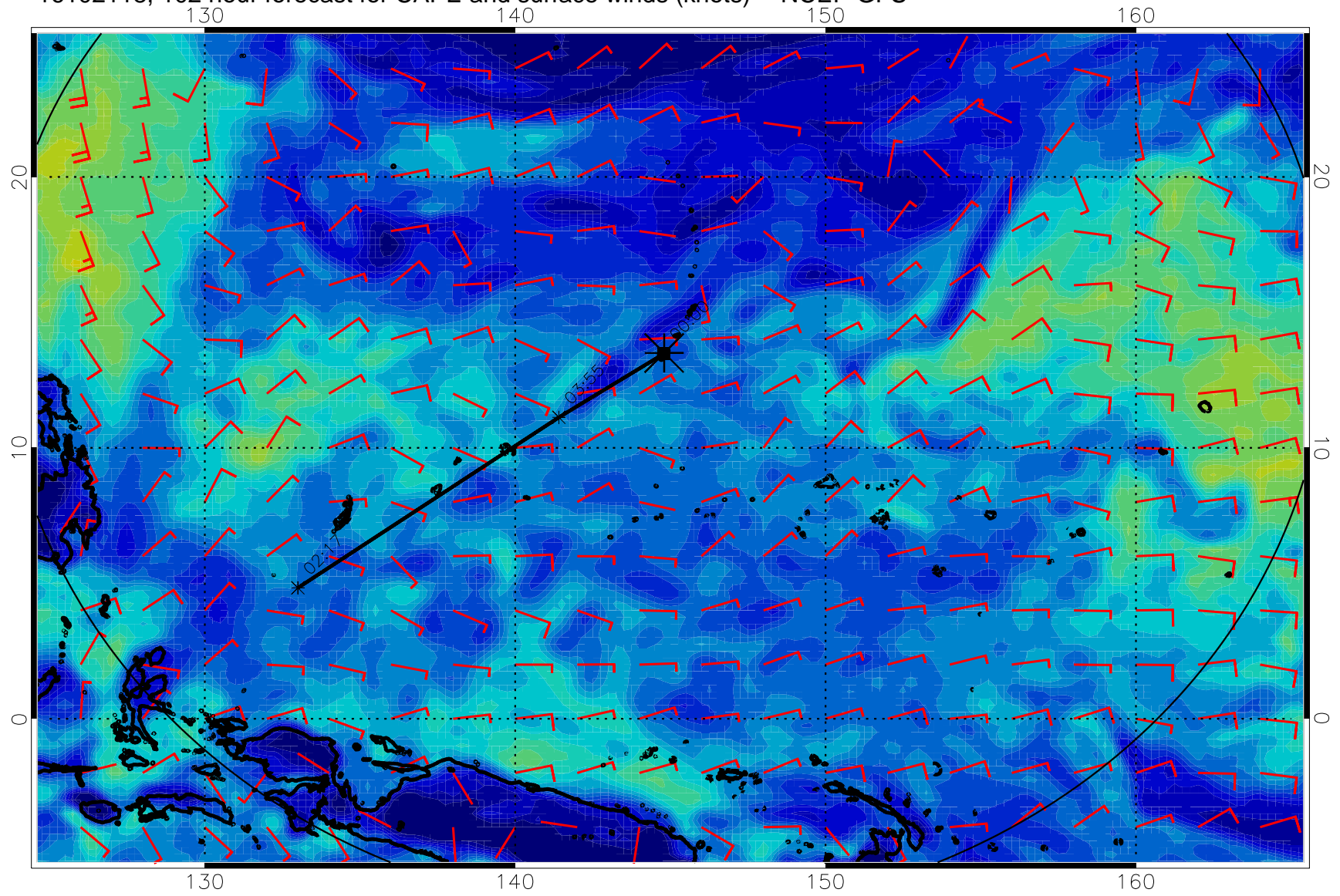


16102112, 096 hour forecast for CAPE and surface winds (knots) -- NCEP GFS

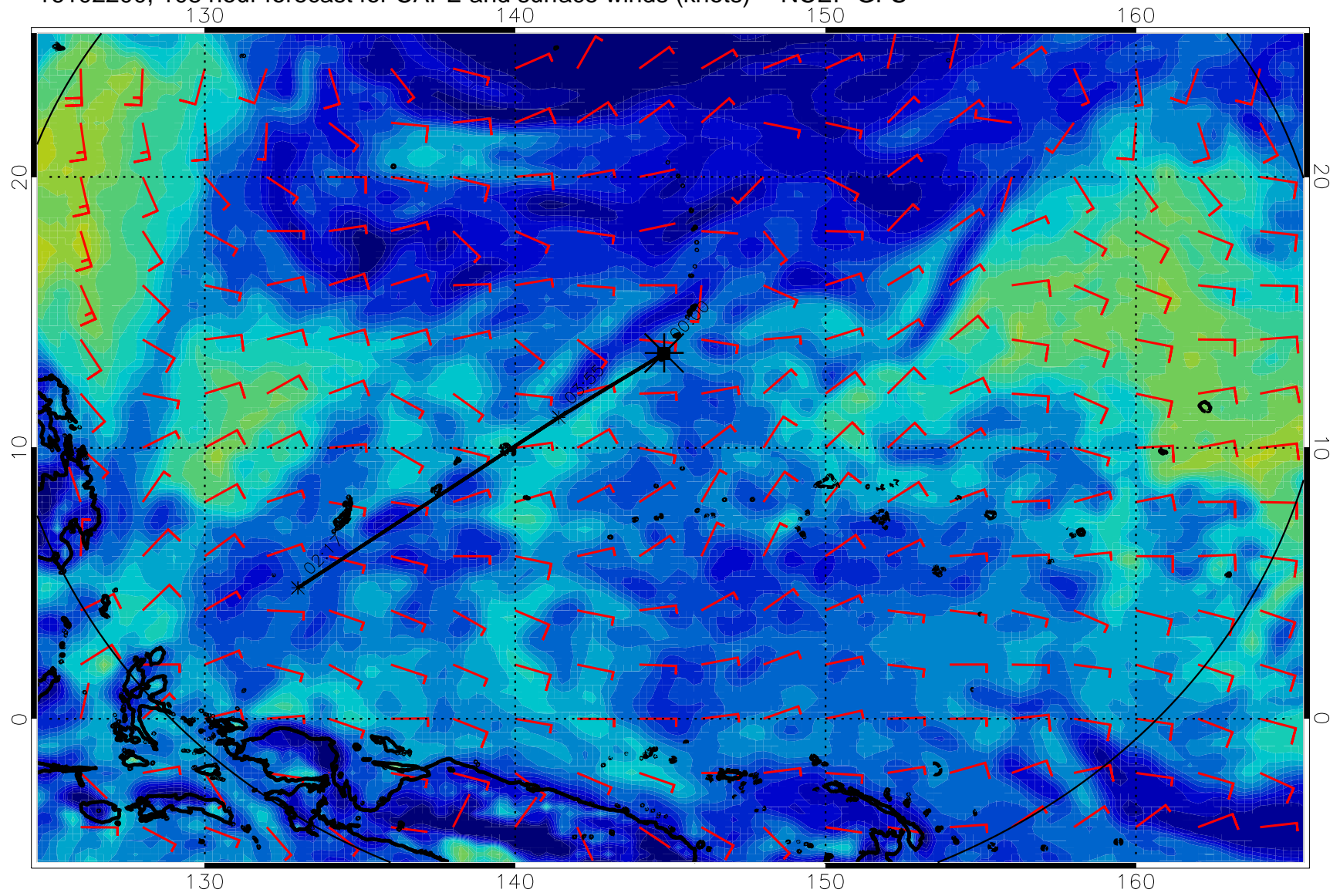




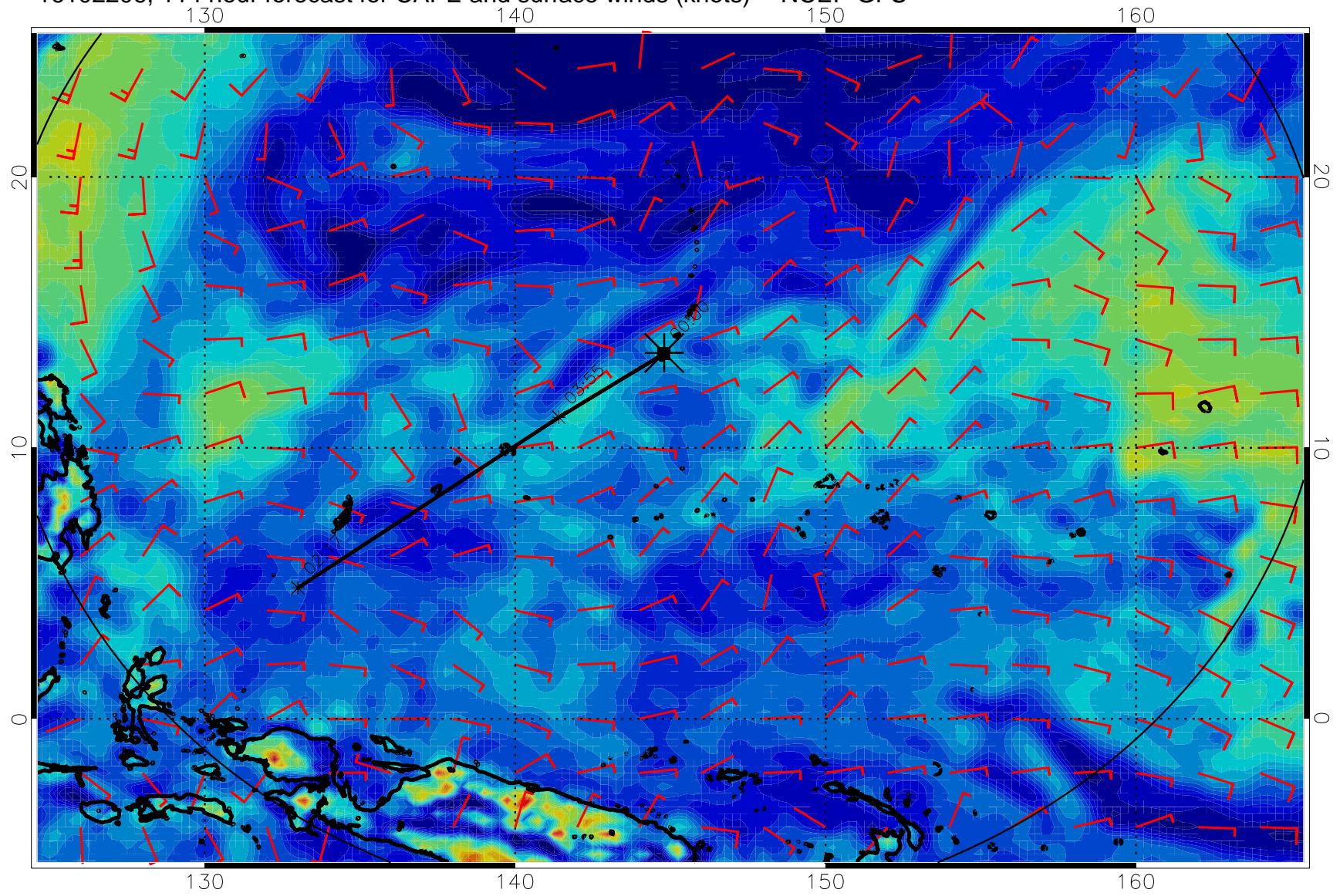
16102118, 102 hour forecast for CAPE and surface winds (knots) -- NCEP GFS



16102200, 108 hour forecast for CAPE and surface winds (knots) -- NCEP GFS



16102206, 114 hour forecast for CAPE and surface winds (knots) -- NCEP GFS



16102212, 120 hour forecast for CAPE and surface winds (knots) -- NCEP GFS

