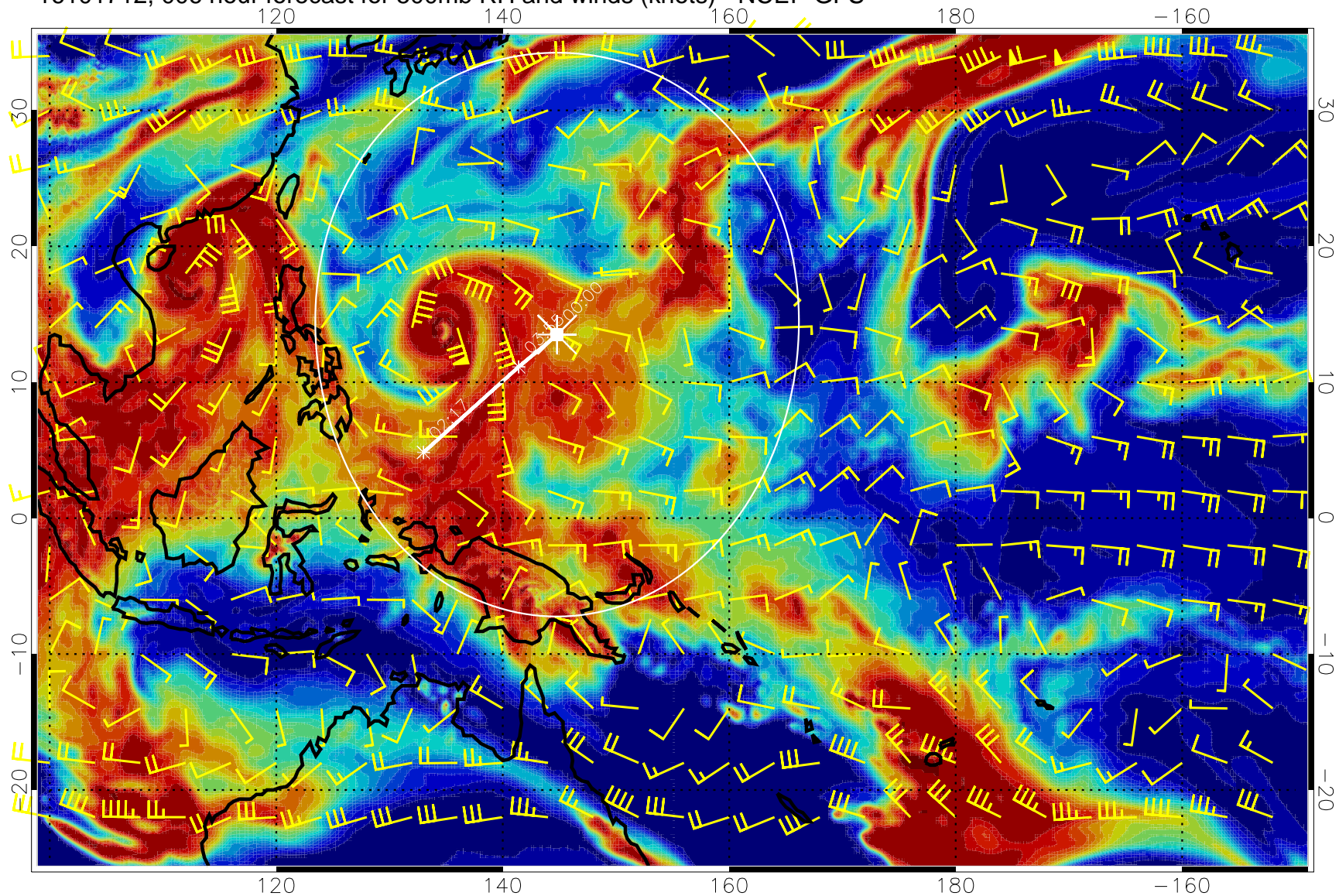


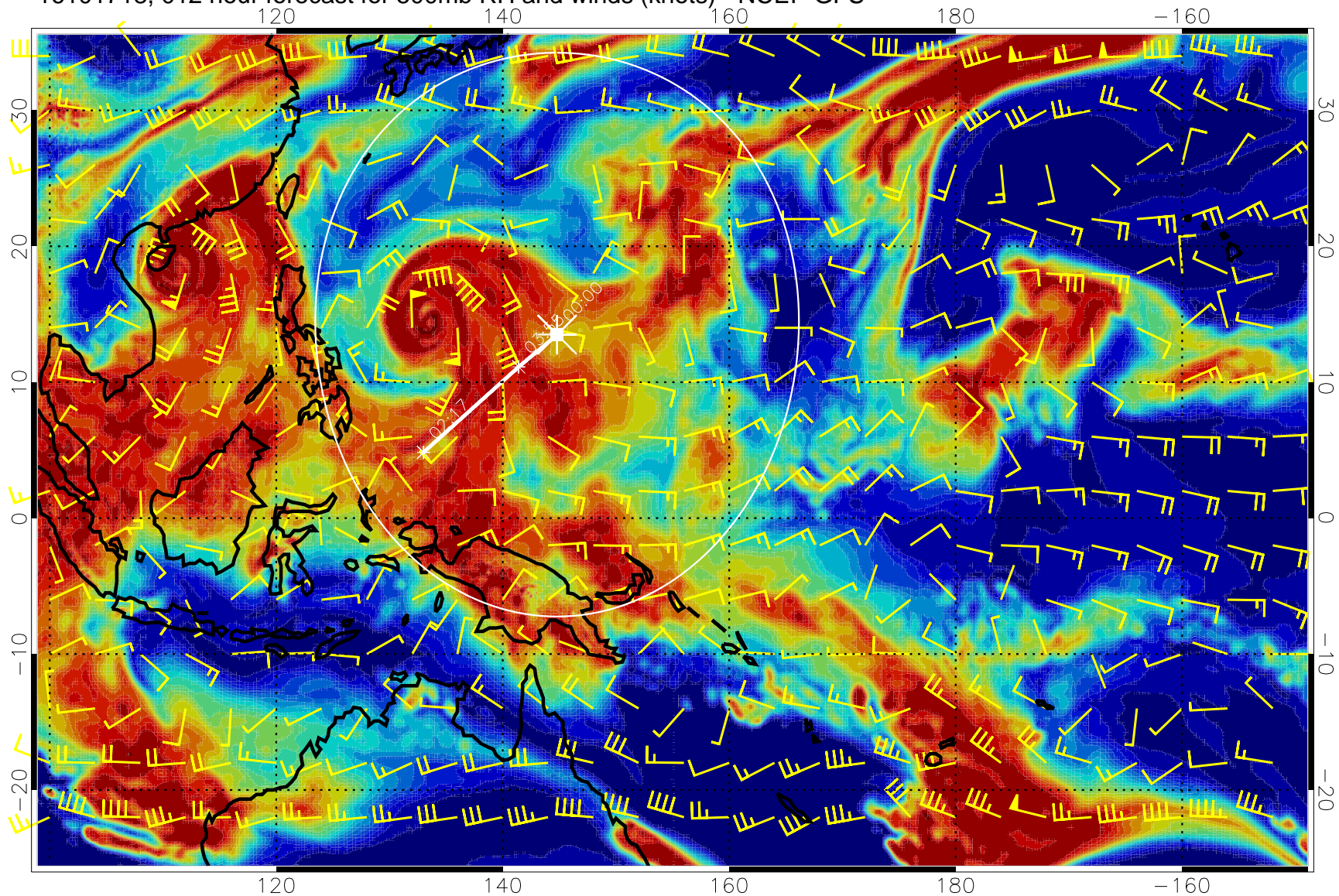
16101712, 006 hour forecast for 500mb RH and winds (knots) - NCEP GFS



0 20 40 60 80 100
RH, %

Range ring of 2304 km

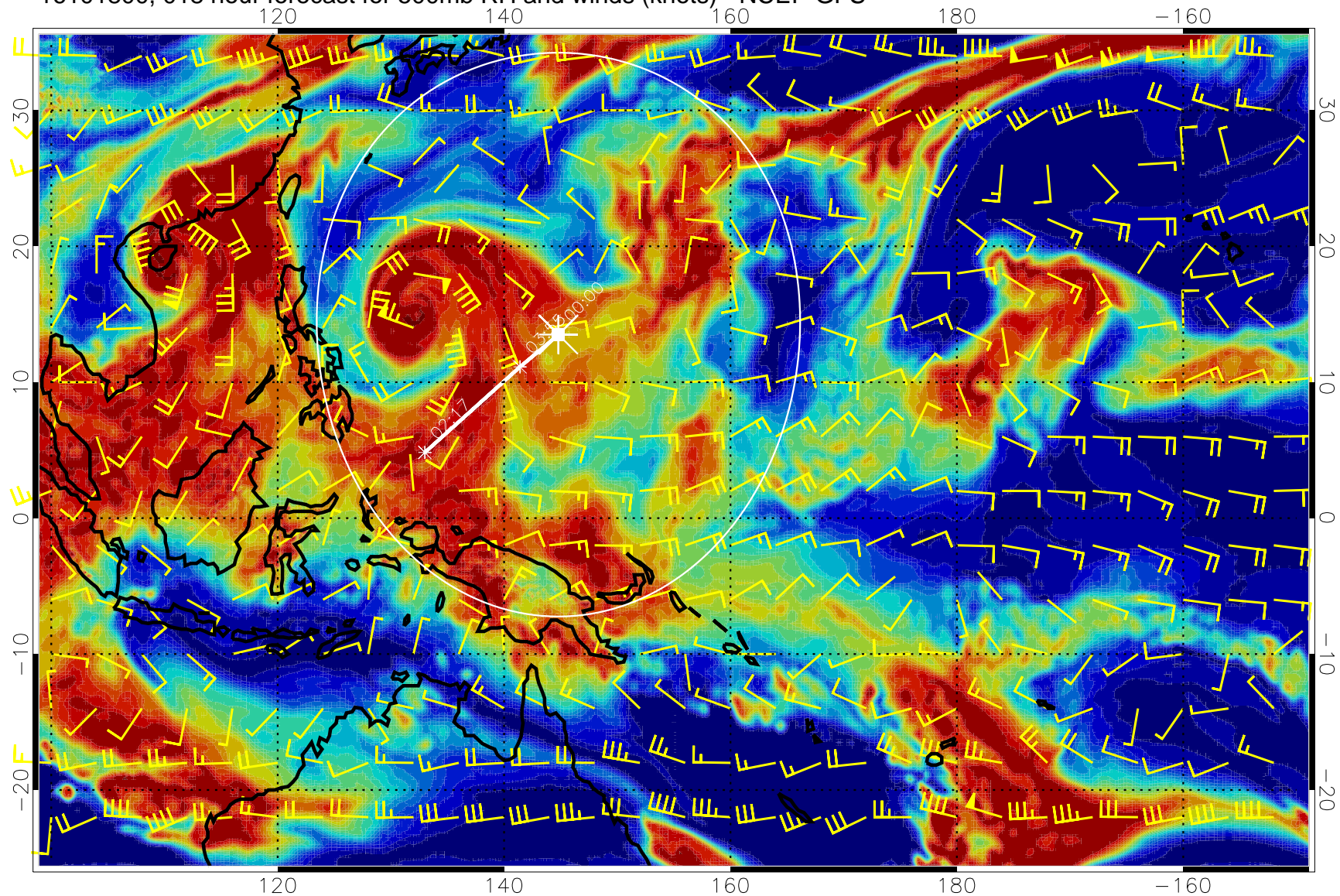
16101718, 012 hour forecast for 500mb RH and winds (knots) - NCEP GFS



0 20 40 60 80 100
RH, %

Range ring of 2304 km

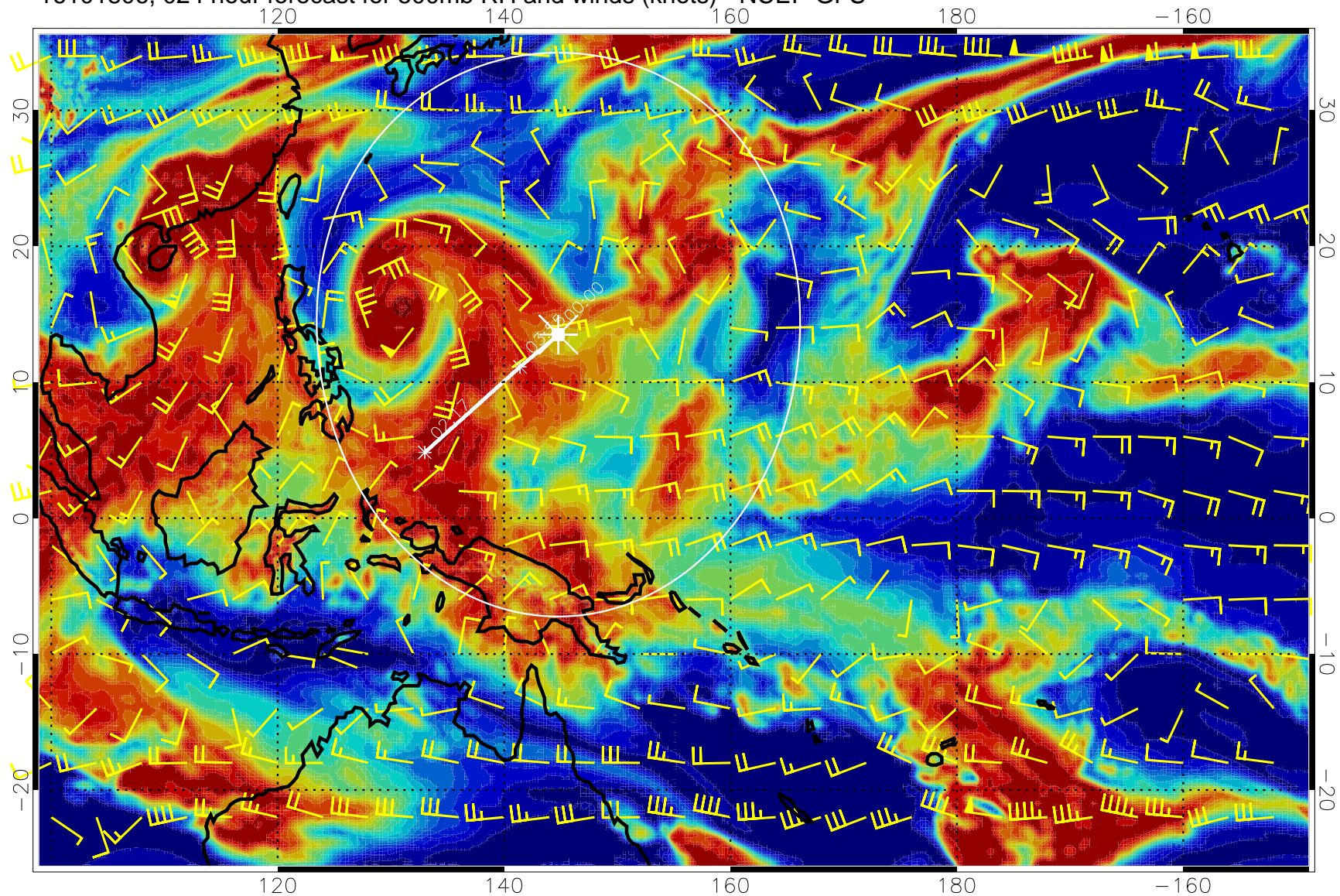
16101800, 018 hour forecast for 500mb RH and winds (knots) - NCEP GFS



0 20 40 60 80 100
RH, %

Range ring of 2304 km

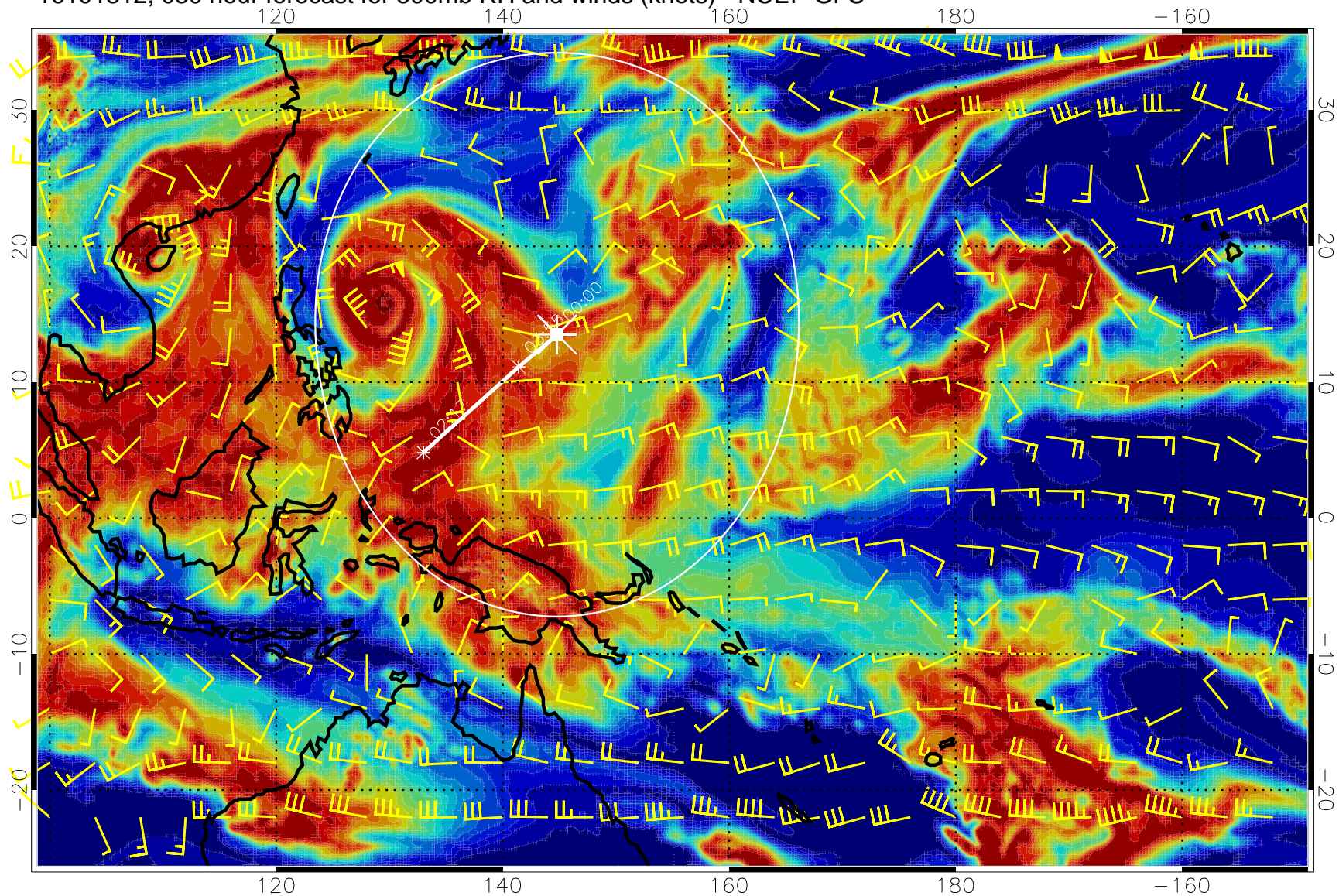
16101806, 024 hour forecast for 500mb RH and winds (knots) - NCEP GFS



0 20 40 60 80 100
RH, %

Range ring of 2304 km

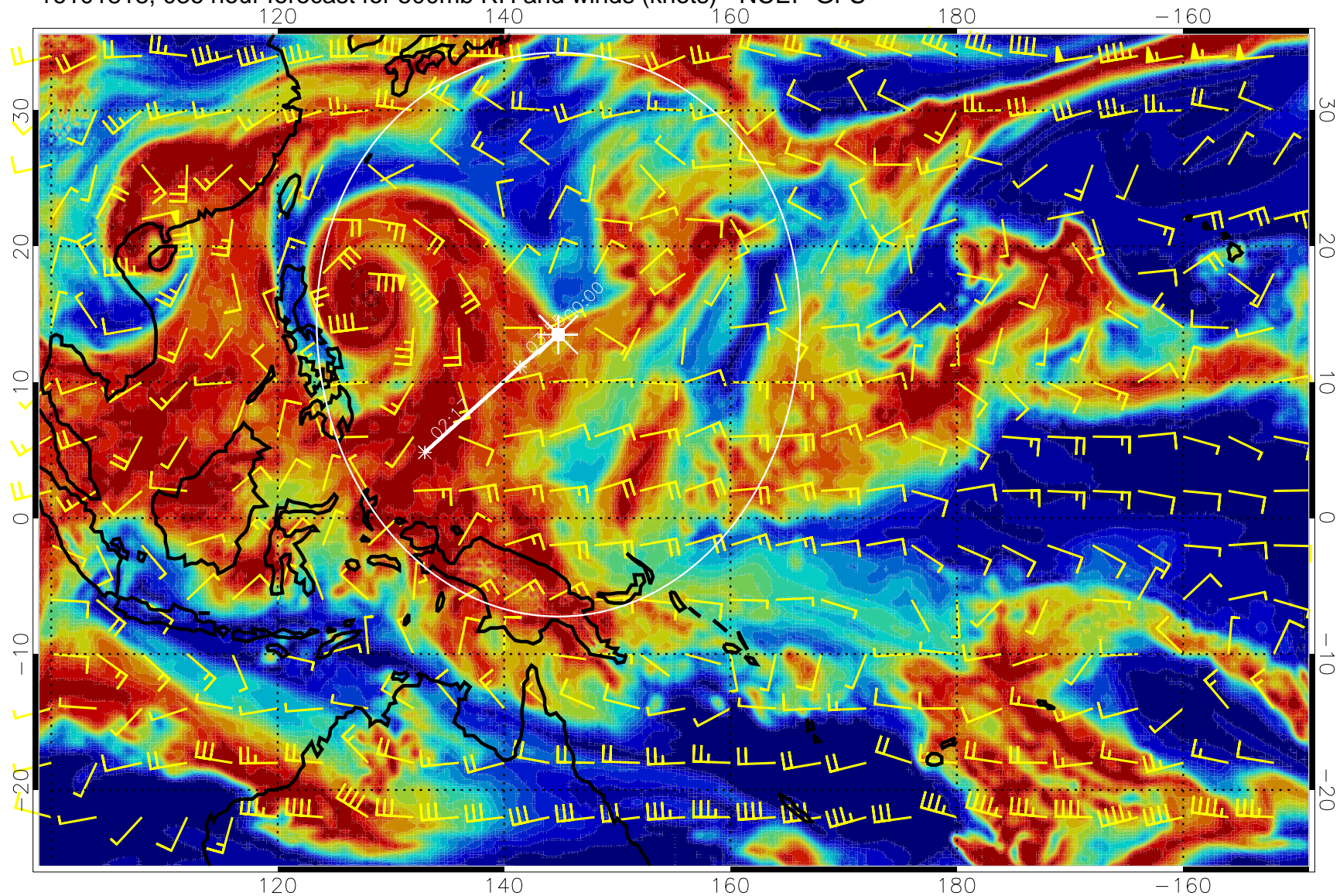
16101812, 030 hour forecast for 500mb RH and winds (knots) - NCEP GFS



0 20 40 60 80 100
RH, %

Range ring of 2304 km

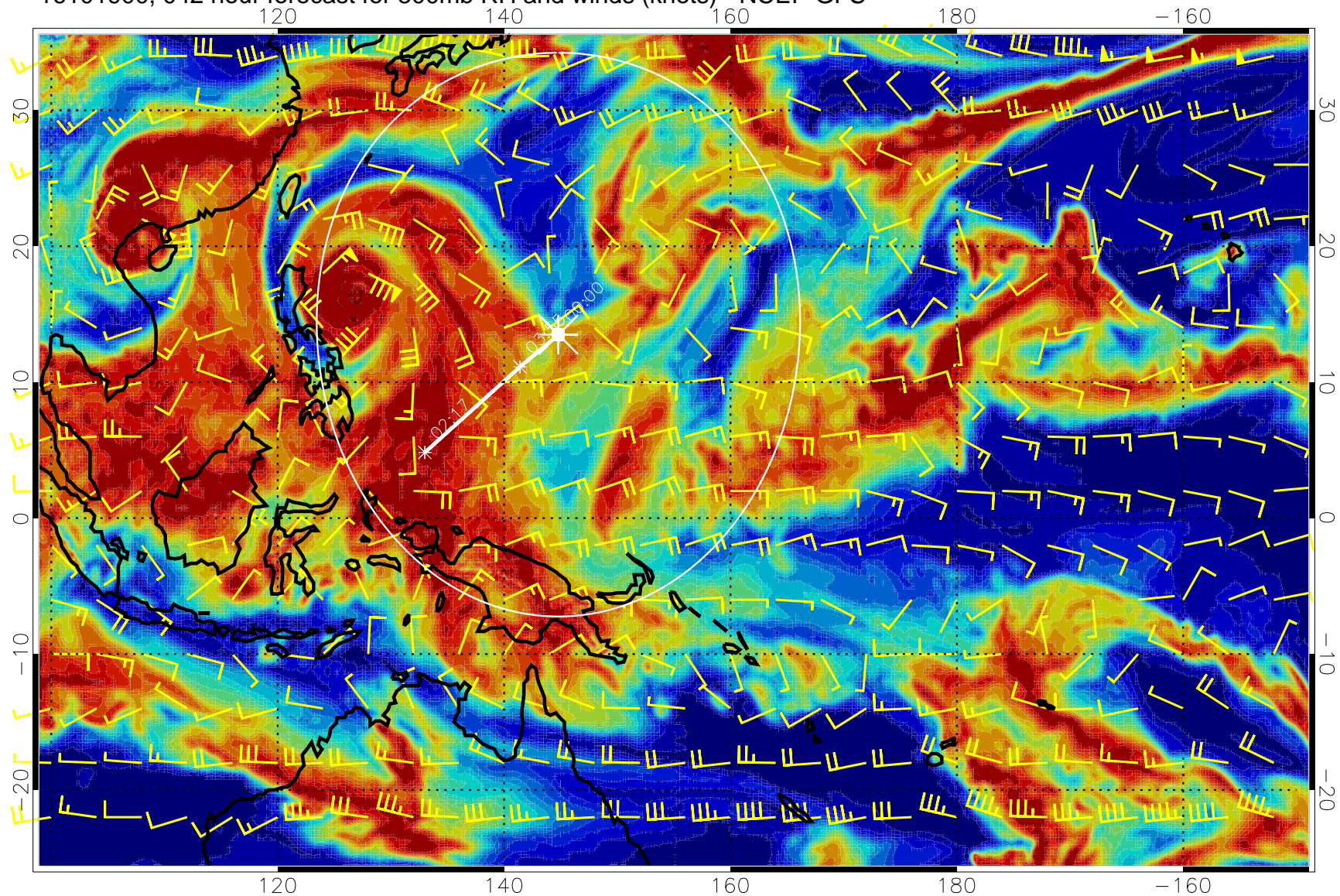
16101818, 036 hour forecast for 500mb RH and winds (knots) - NCEP GFS



0 20 40 60 80 100
RH, %

Range ring of 2304 km

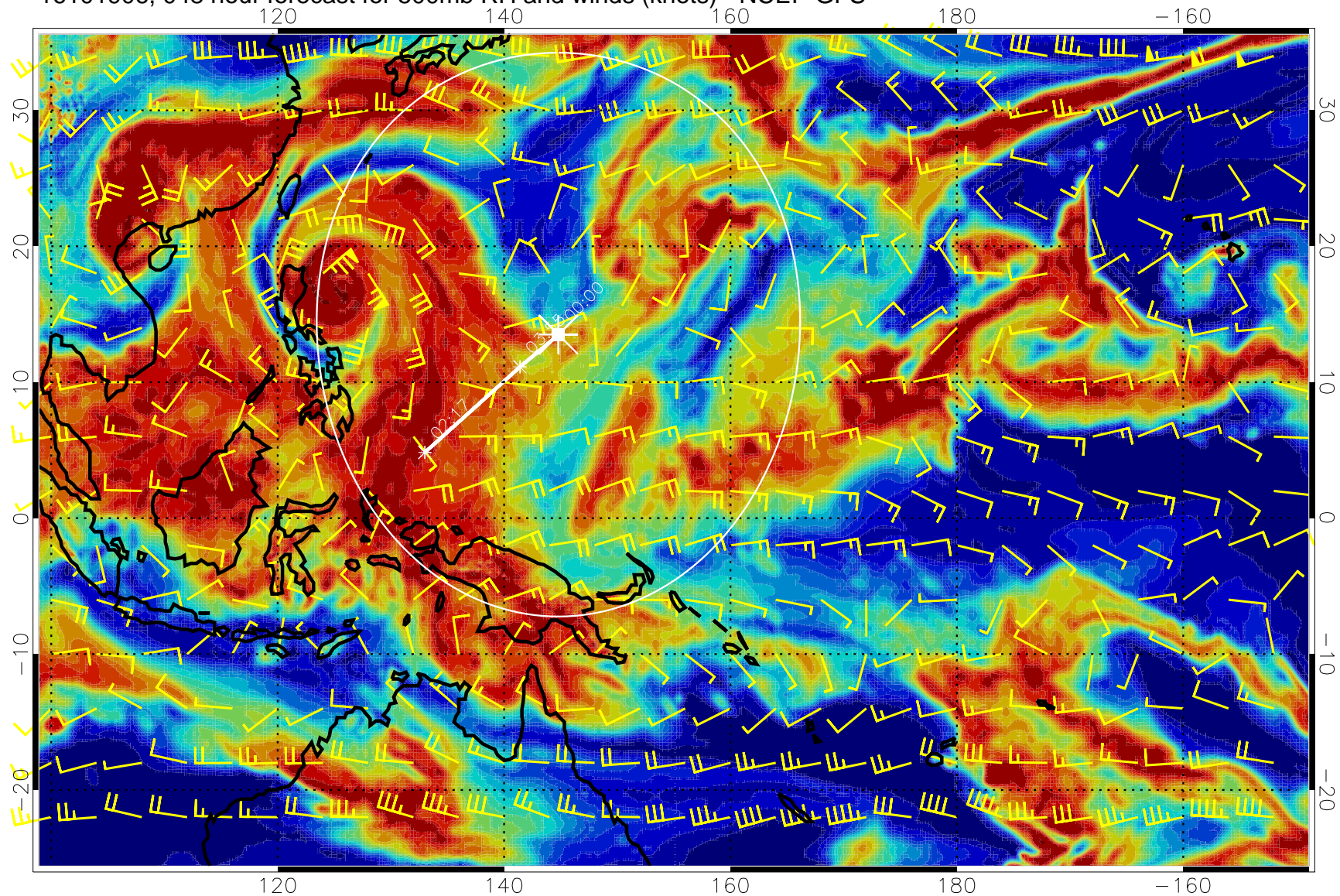
16101900, 042 hour forecast for 500mb RH and winds (knots) - NCEP GFS



0 20 40 60 80 100
RH, %

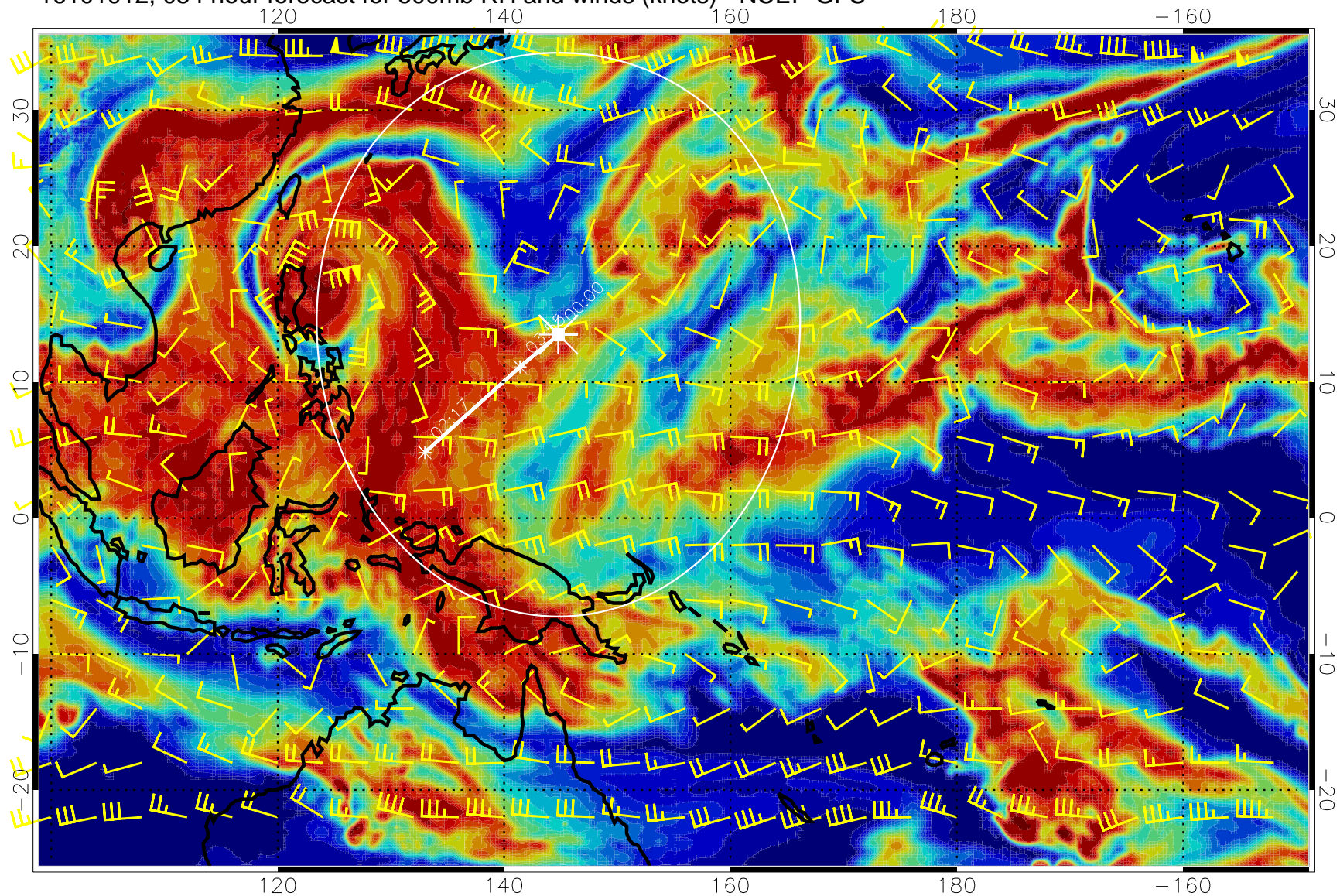
Range ring of 2304 km

16101906, 048 hour forecast for 500mb RH and winds (knots) - NCEP GFS



Range ring of 2304 km

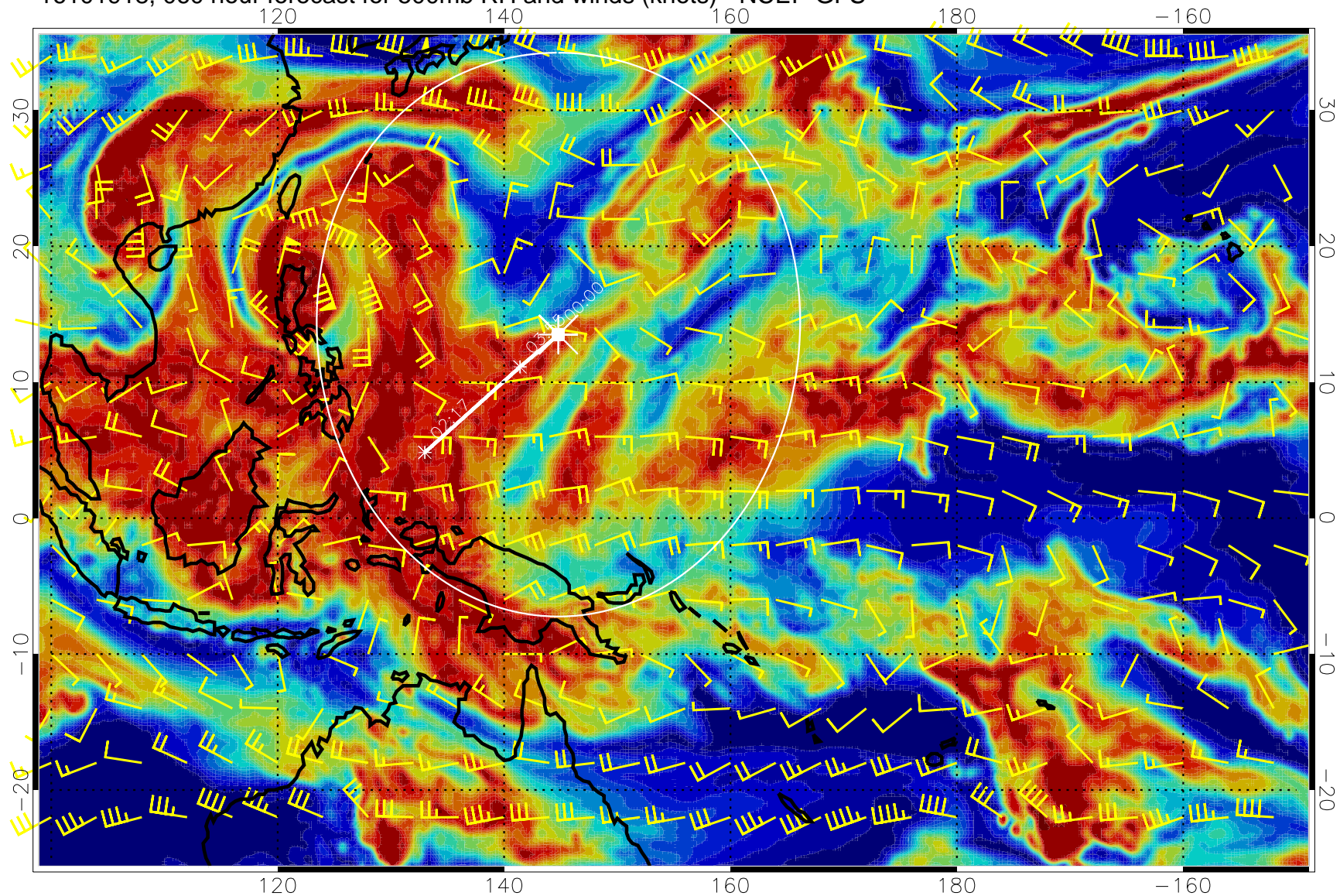
16101912, 054 hour forecast for 500mb RH and winds (knots) - NCEP GFS



0 20 40 60 80 100
RH, %

Range ring of 2304 km

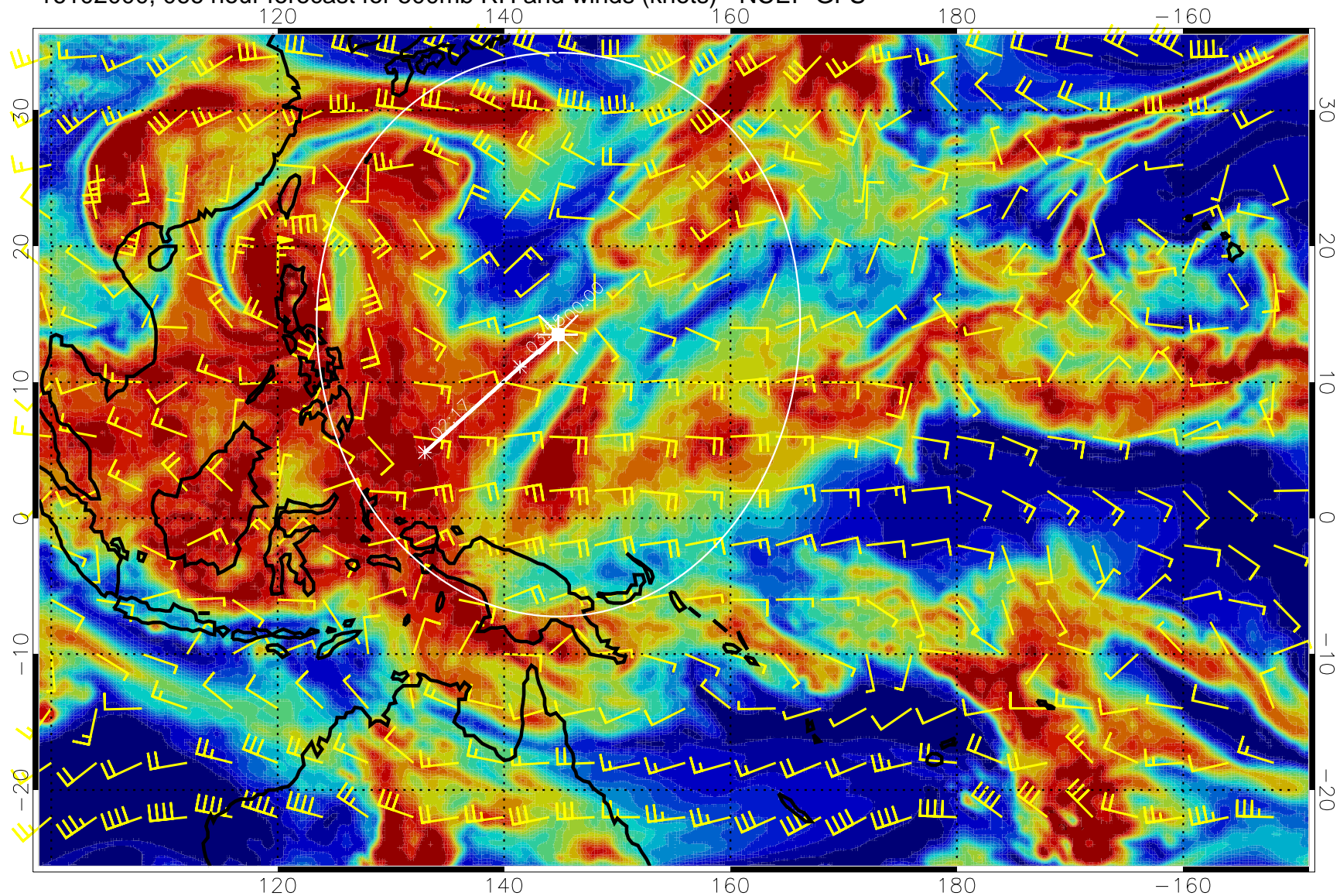
16101918, 060 hour forecast for 500mb RH and winds (knots) - NCEP GFS



0 20 40 60 80 100
RH, %

Range ring of 2304 km

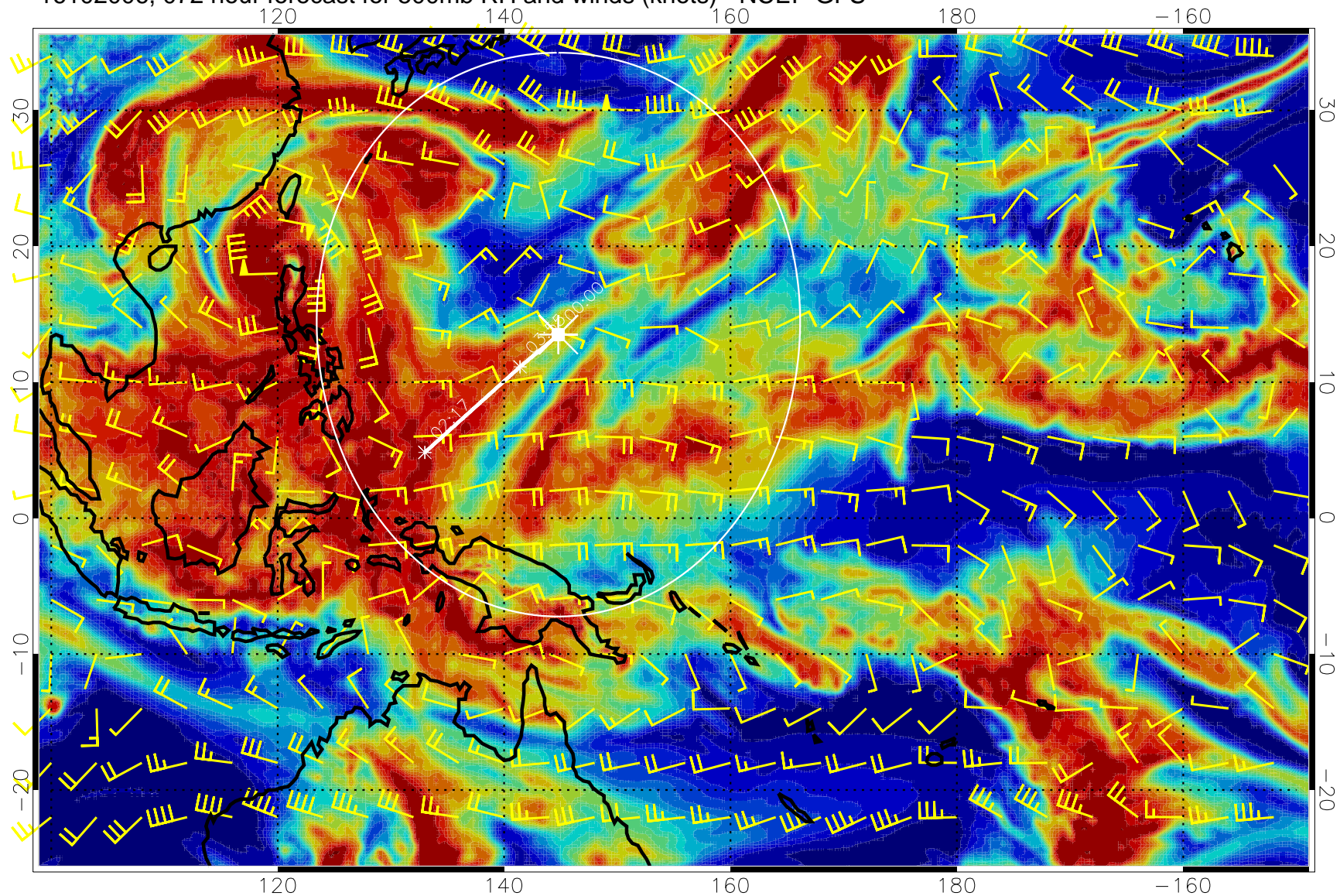
16102000, 066 hour forecast for 500mb RH and winds (knots) - NCEP GFS



0 20 40 60 80 100
RH, %

Range ring of 2304 km

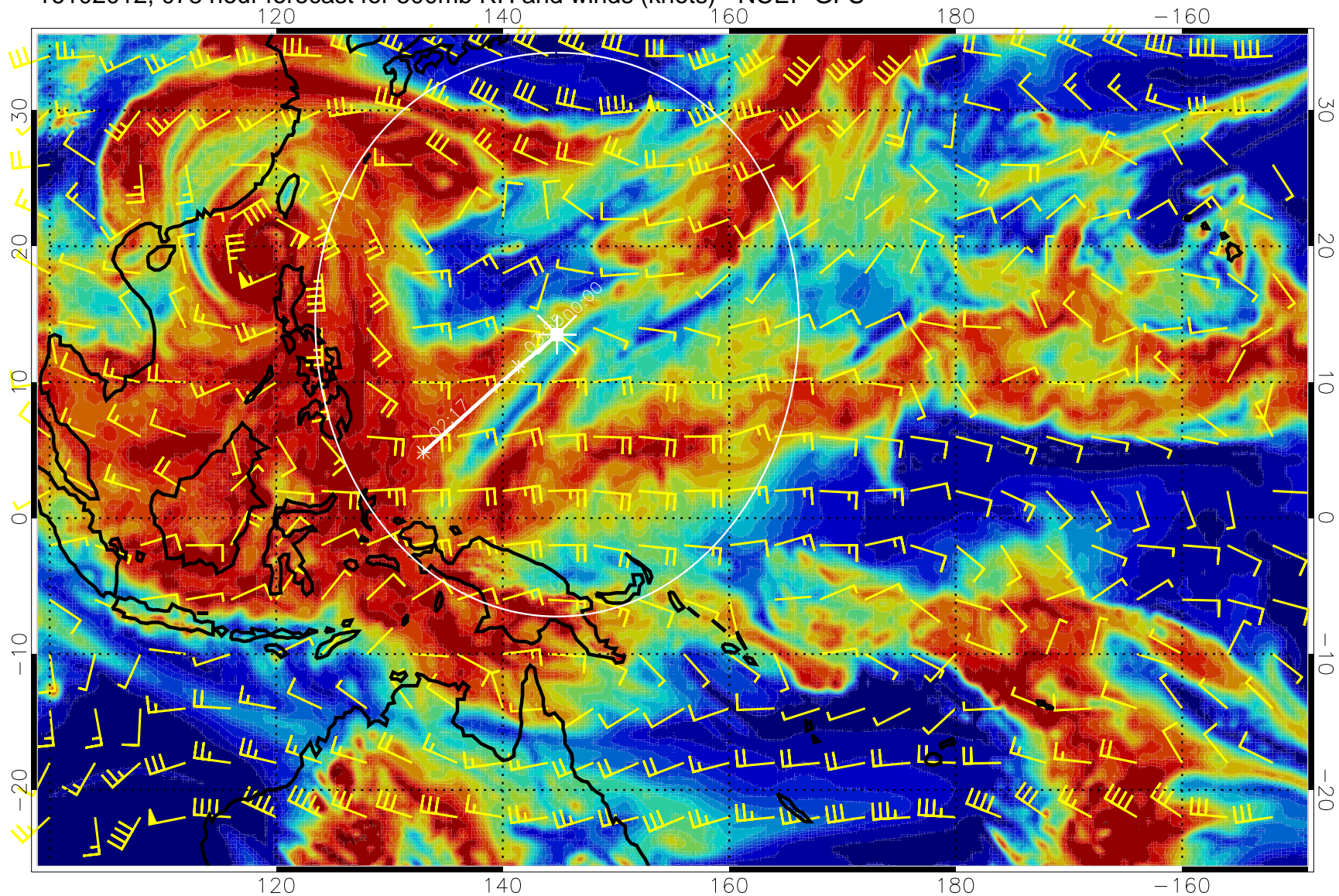
16102006, 072 hour forecast for 500mb RH and winds (knots) - NCEP GFS



0 20 40 60 80 100
RH, %

Range ring of 2304 km

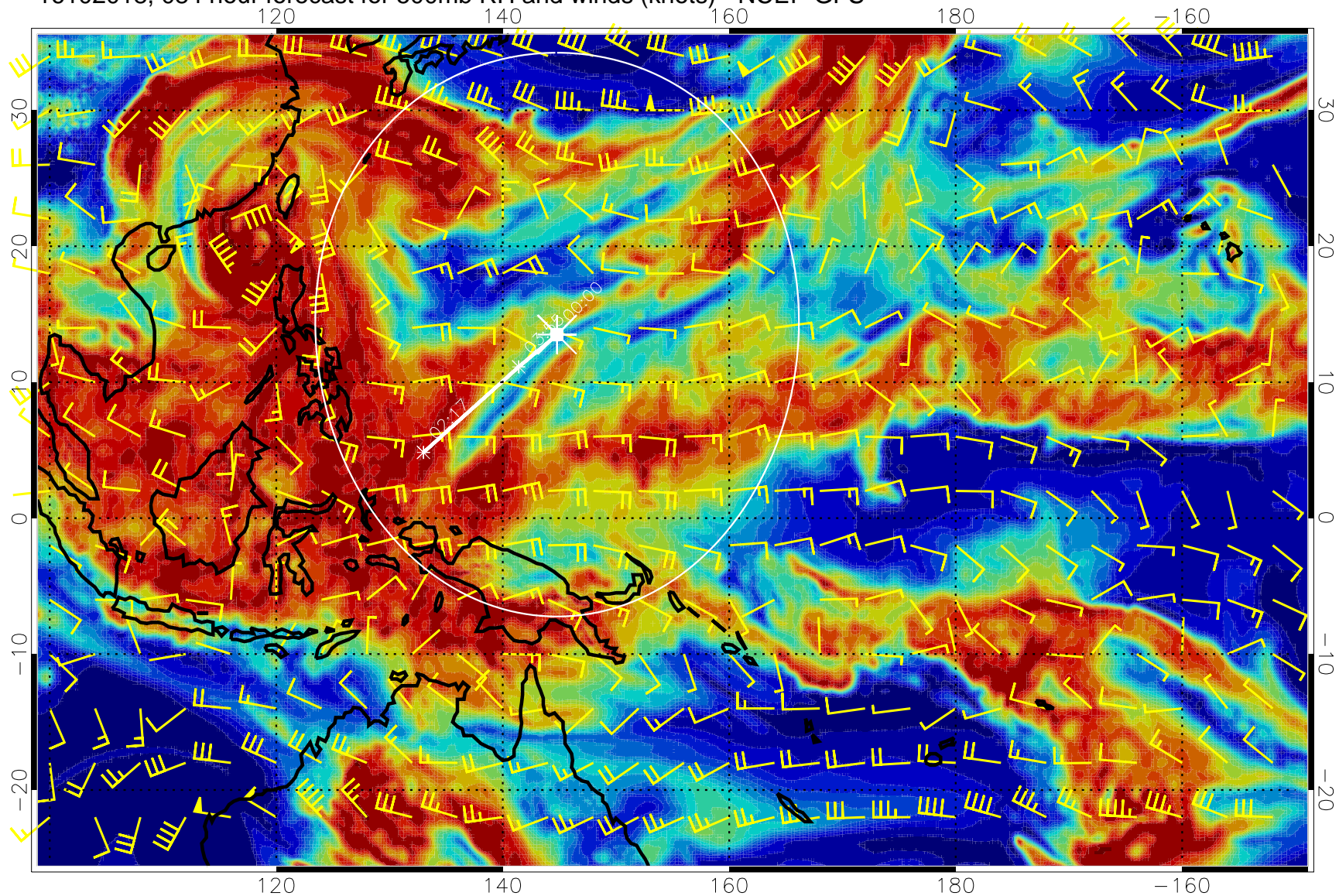
16102012, 078 hour forecast for 500mb RH and winds (knots) - NCEP GFS



0 20 40 60 80 100
RH, %

Range ring of 2304 km

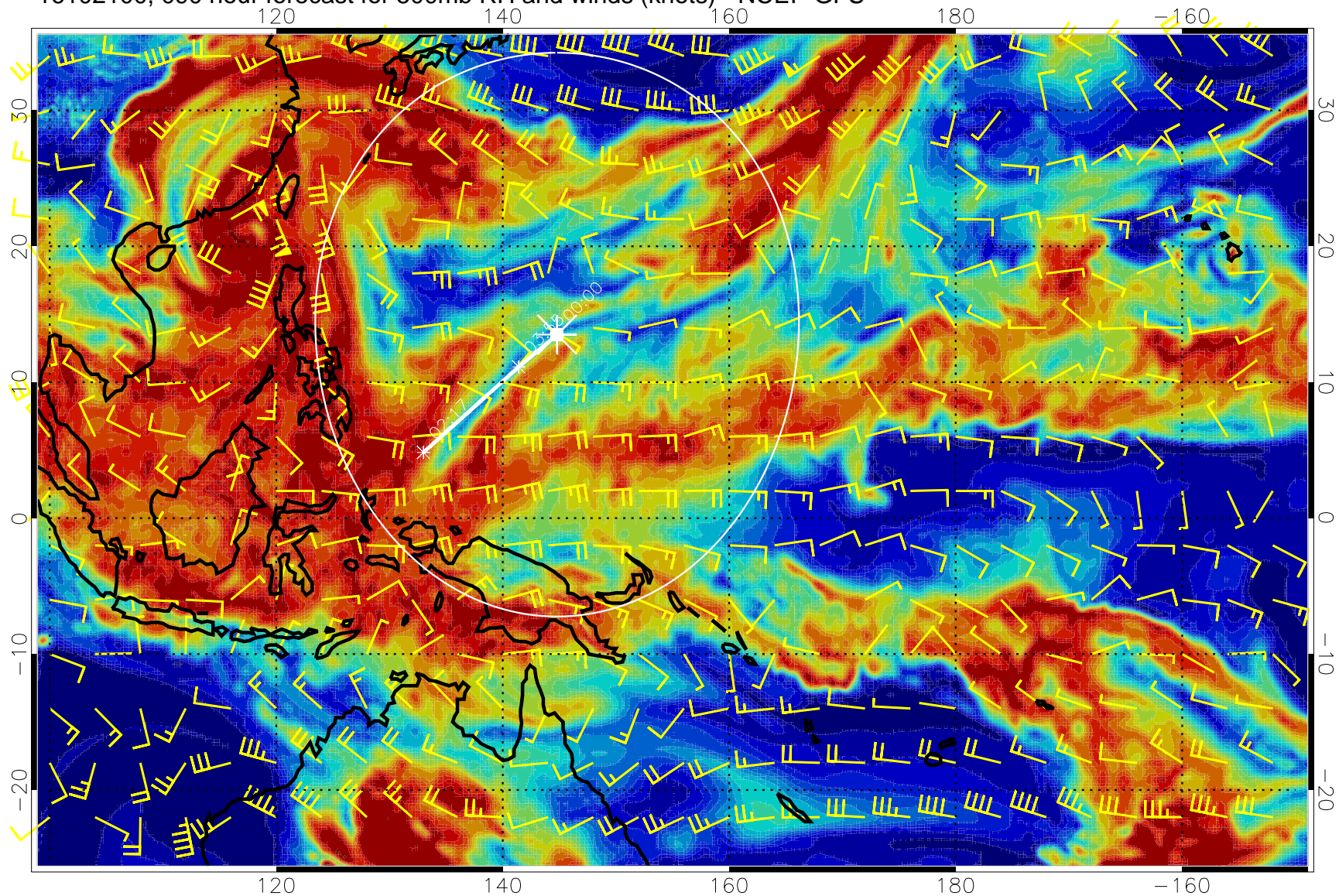
16102018, 084 hour forecast for 500mb RH and winds (knots) - NCEP GFS



0 20 40 60 80 100
RH, %

Range ring of 2304 km

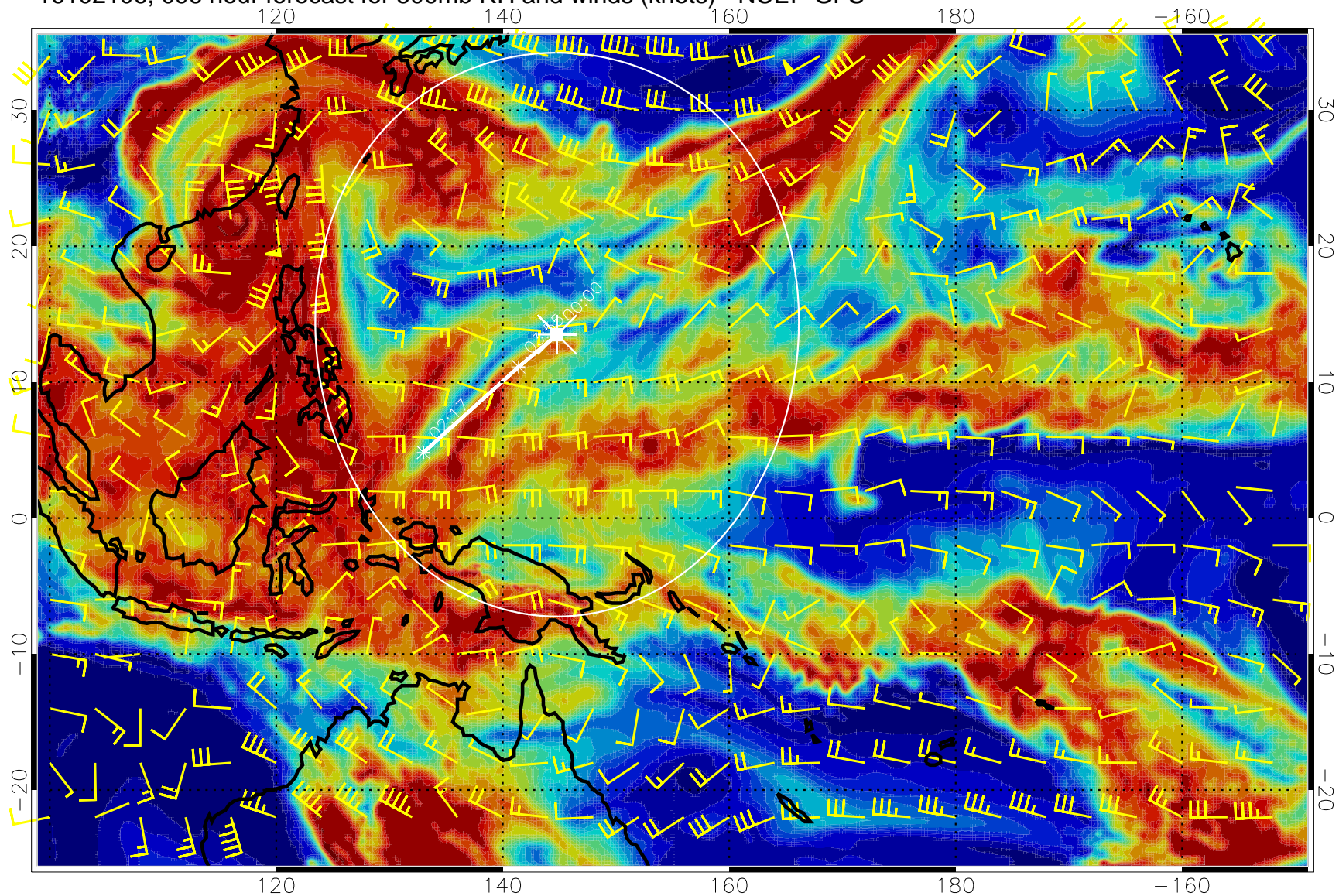
16102100, 090 hour forecast for 500mb RH and winds (knots) - NCEP GFS



0 20 40 60 80 100
RH, %

Range ring of 2304 km

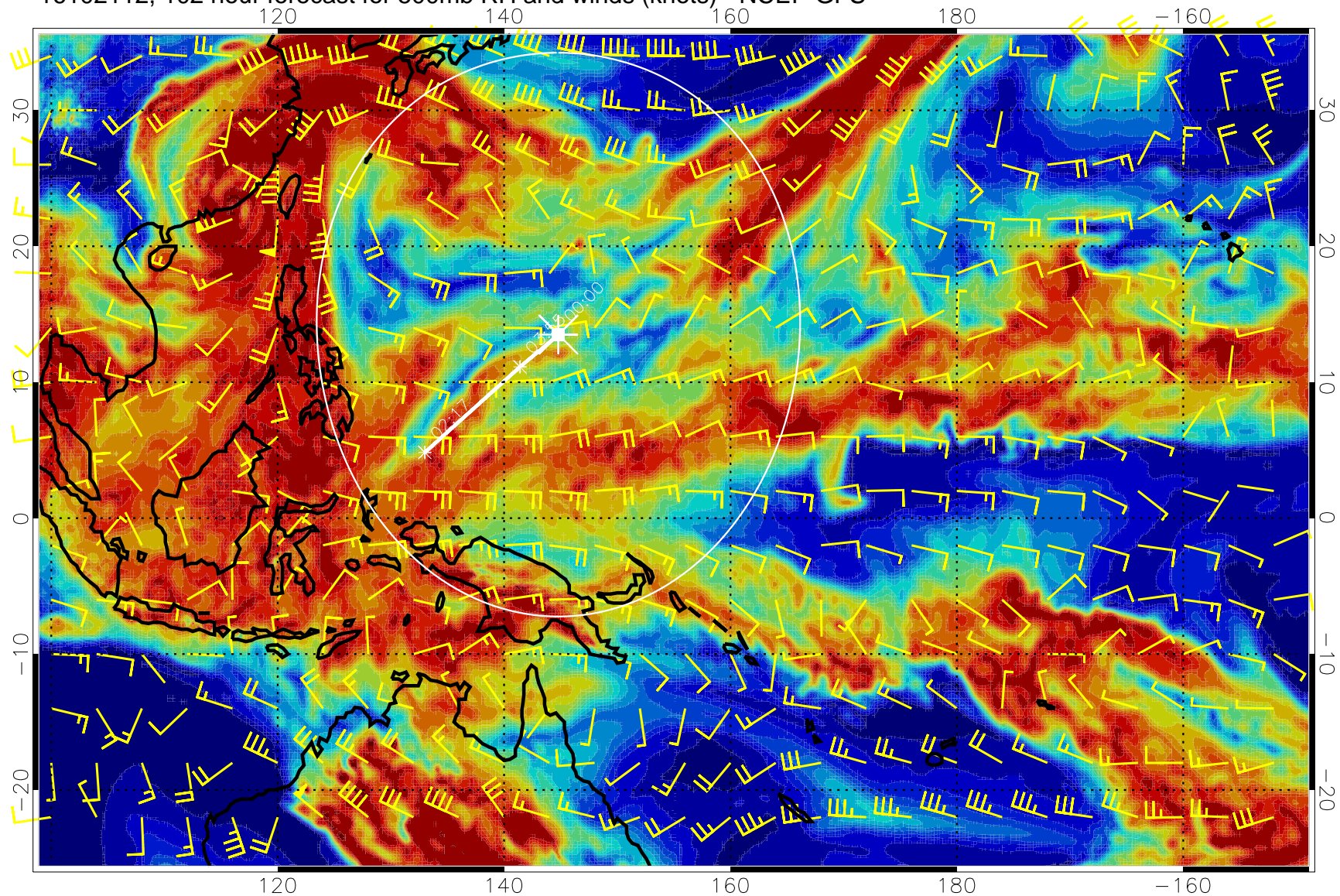
16102106, 096 hour forecast for 500mb RH and winds (knots) - NCEP GFS



0 20 40 60 80 100
RH, %

Range ring of 2304 km

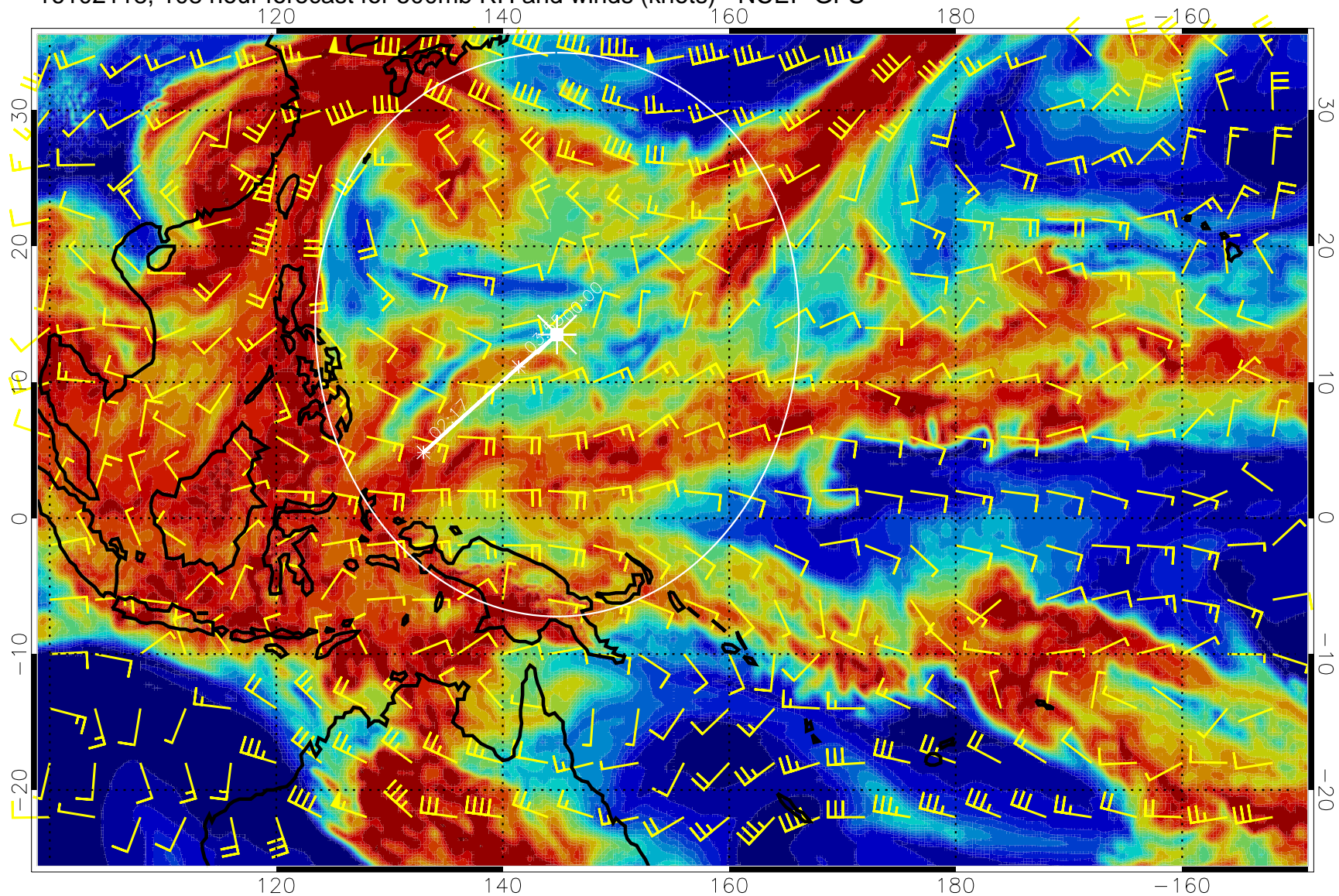
16102112, 102 hour forecast for 500mb RH and winds (knots) - NCEP GFS



0 20 40 60 80 100
RH, %

Range ring of 2304 km

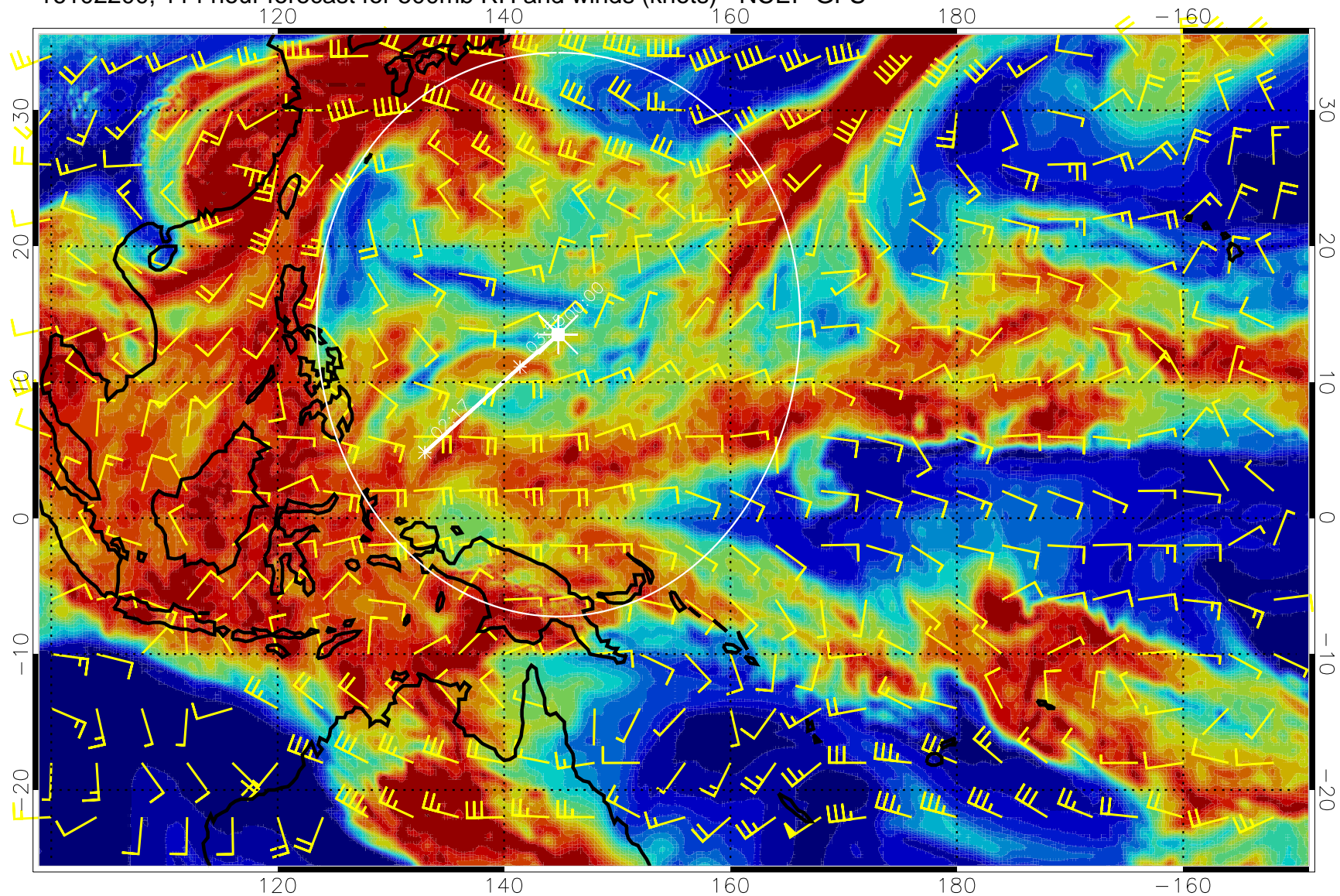
16102118, 108 hour forecast for 500mb RH and winds (knots) - NCEP GFS



0 20 40 60 80 100
RH, %

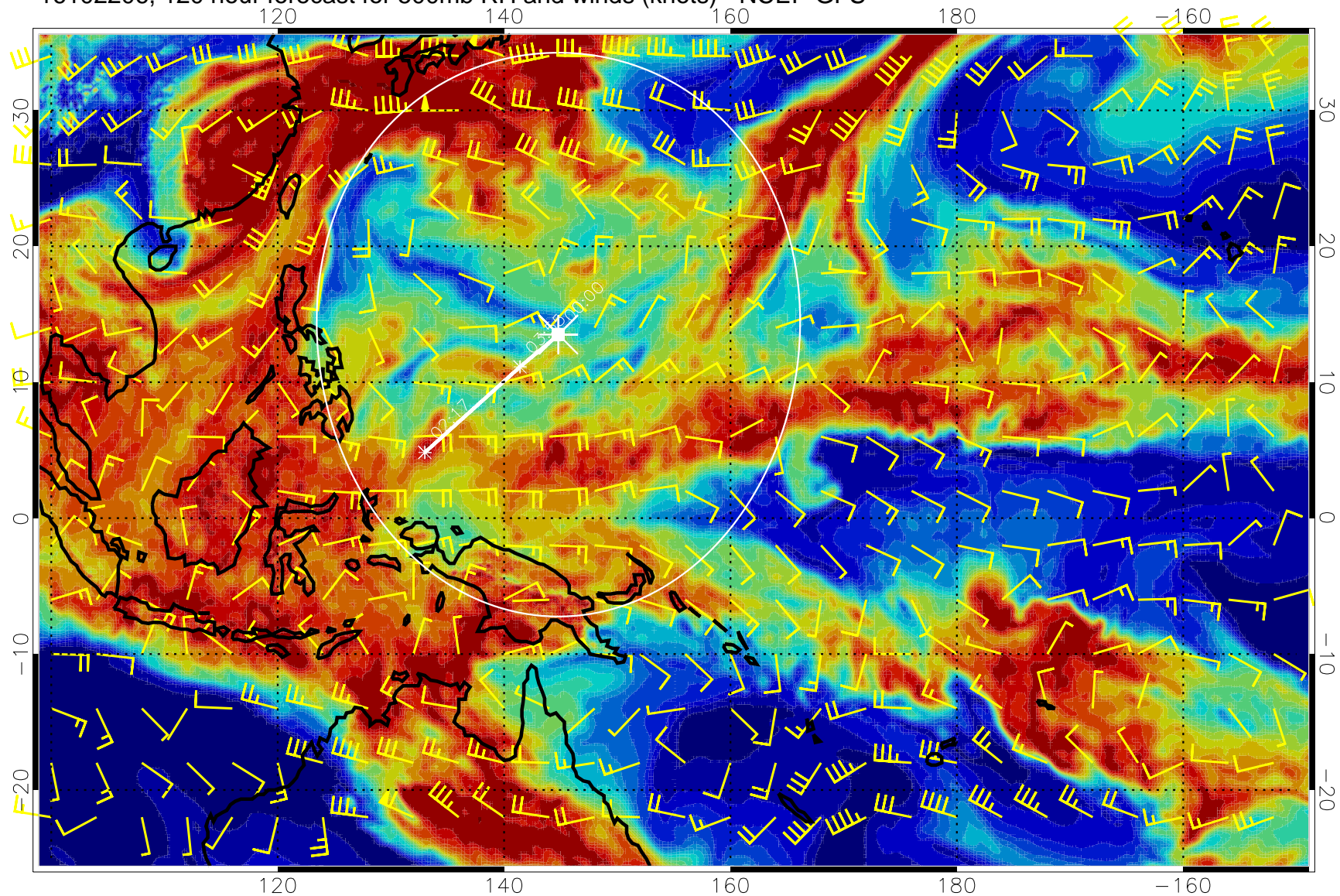
Range ring of 2304 km

16102200, 114 hour forecast for 500mb RH and winds (knots) - NCEP GFS



Range ring of 2304 km

16102206, 120 hour forecast for 500mb RH and winds (knots) - NCEP GFS



0 20 40 60 80 100
RH, %

Range ring of 2304 km