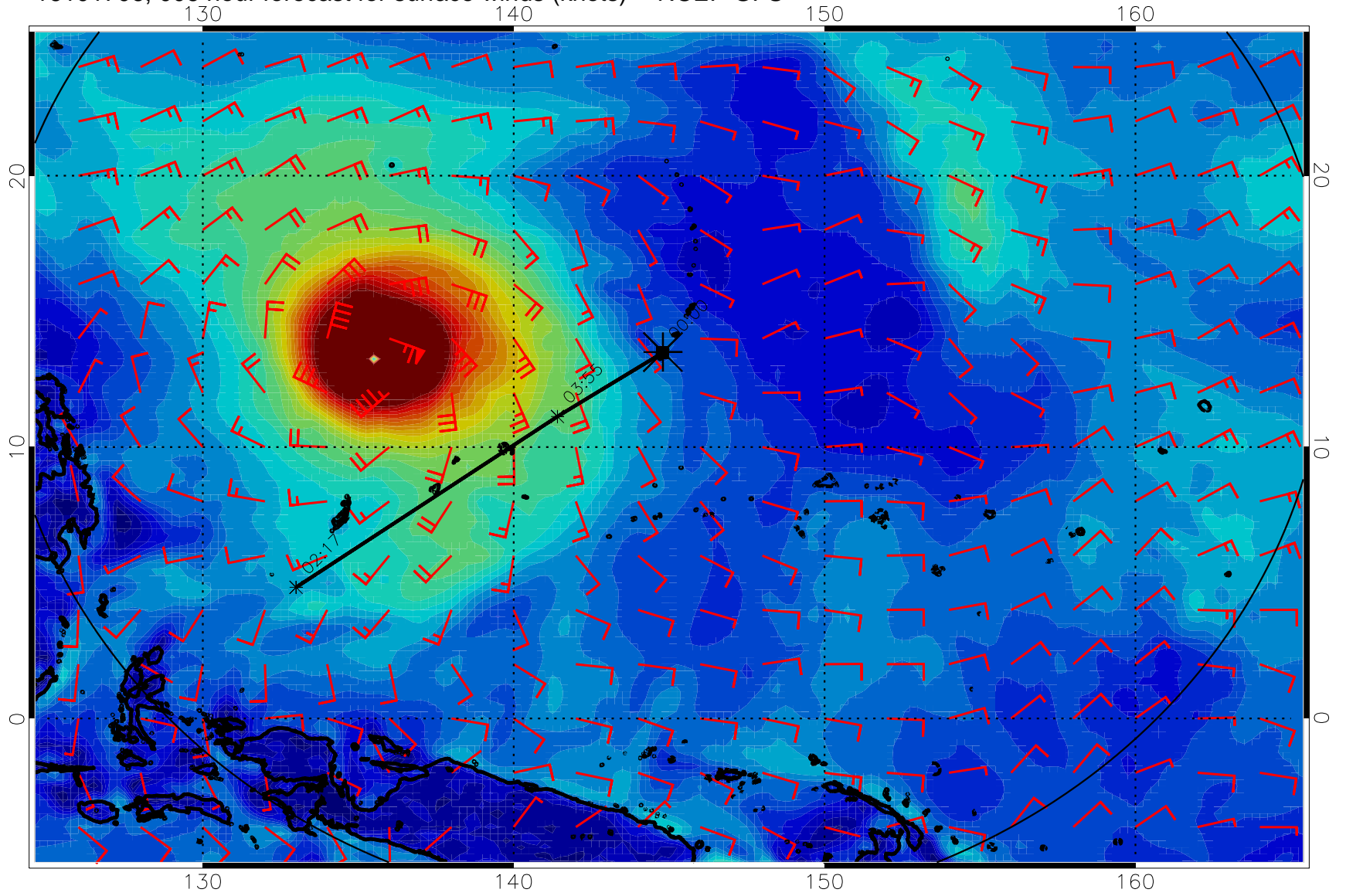
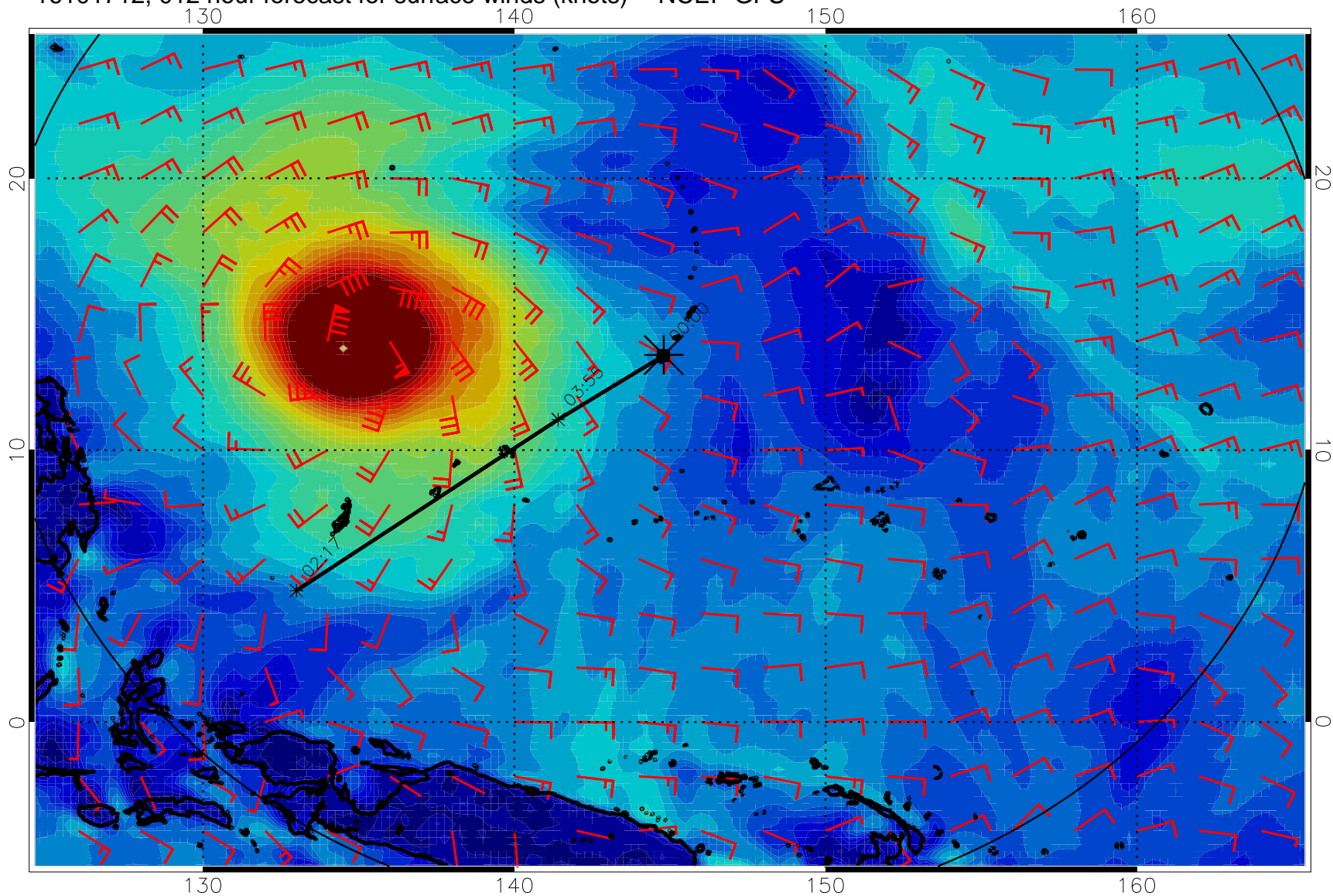


16101706, 006 hour forecast for surface winds (knots) -- NCEP GFS



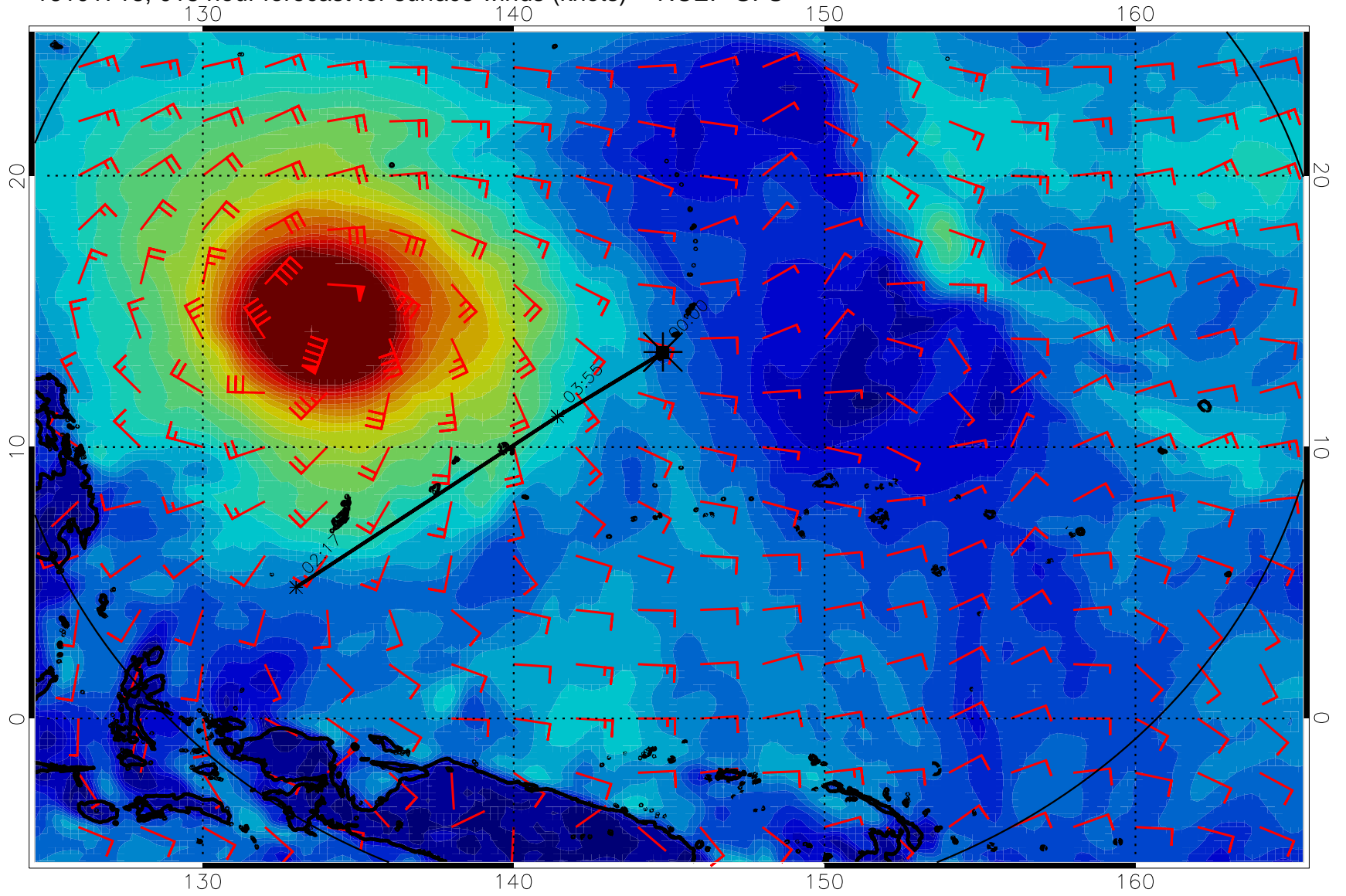
0 10 20 30  
Surface Wind Speed, knots

16101712, 012 hour forecast for surface winds (knots) -- NCEP GFS



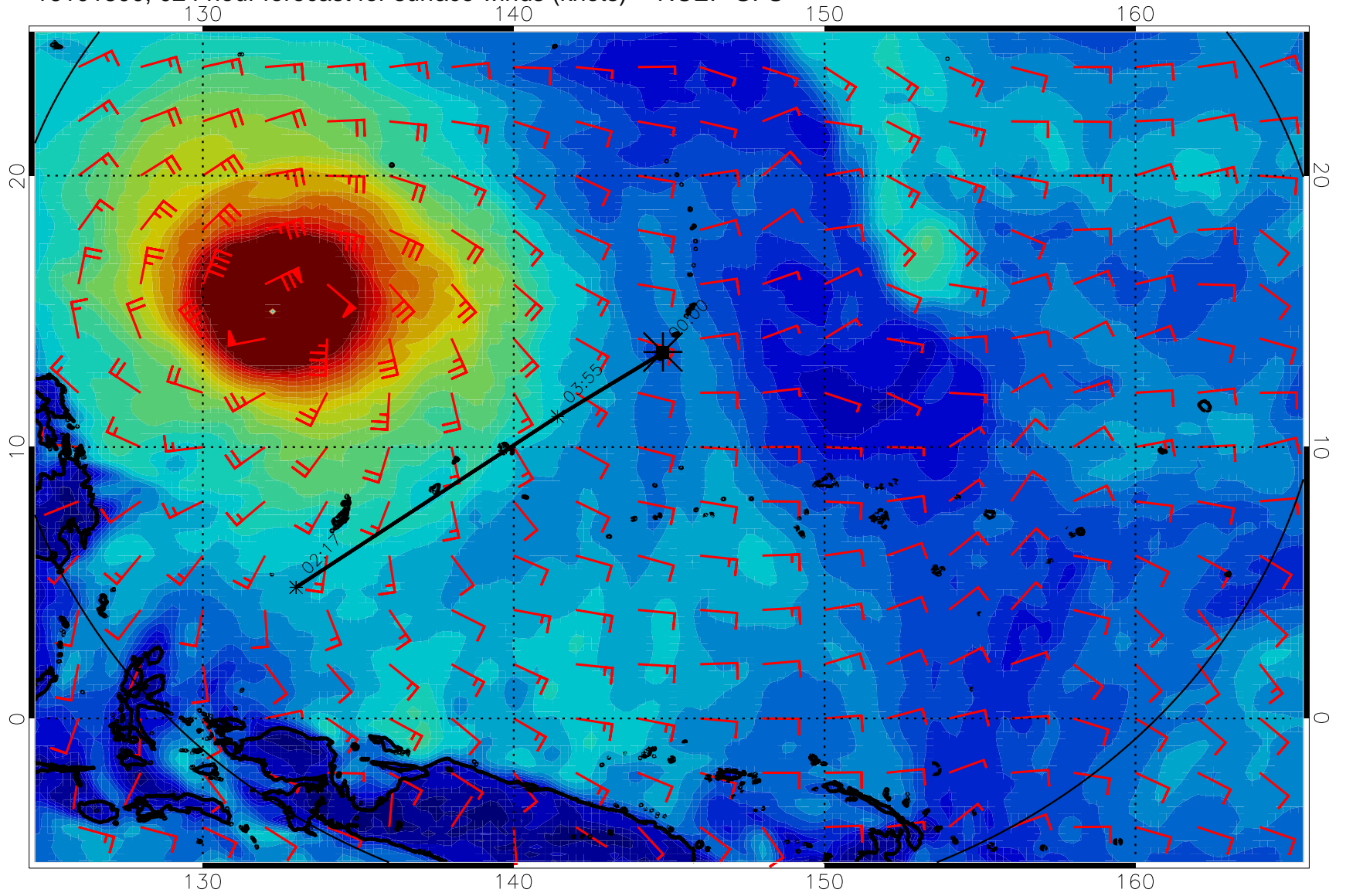
0 10 20 30  
Surface Wind Speed, knots

16101718, 018 hour forecast for surface winds (knots) -- NCEP GFS



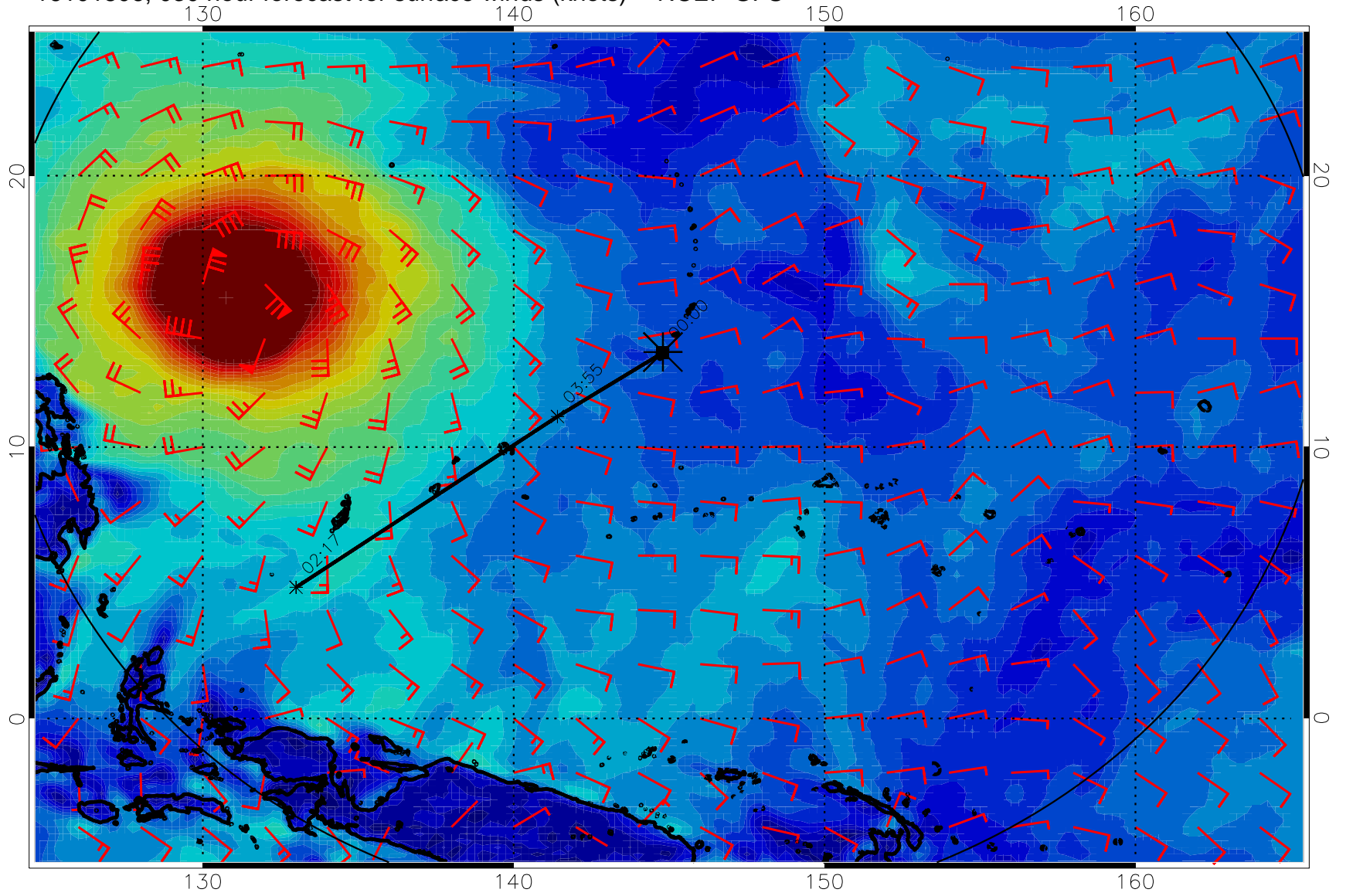
0      10      20      30  
Surface Wind Speed, knots

16101800, 024 hour forecast for surface winds (knots) -- NCEP GFS



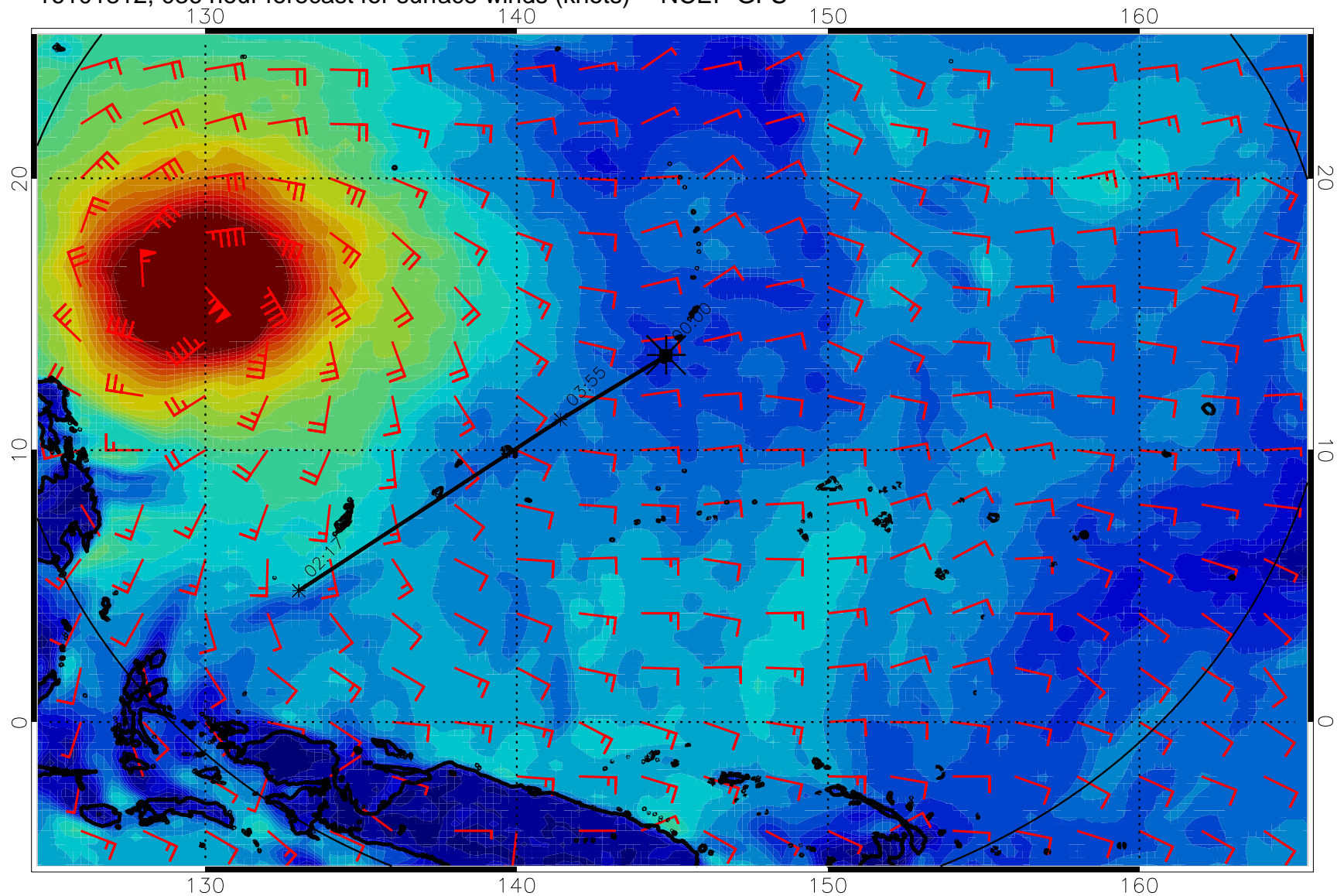
0 10 20 30  
Surface Wind Speed, knots

16101806, 030 hour forecast for surface winds (knots) -- NCEP GFS



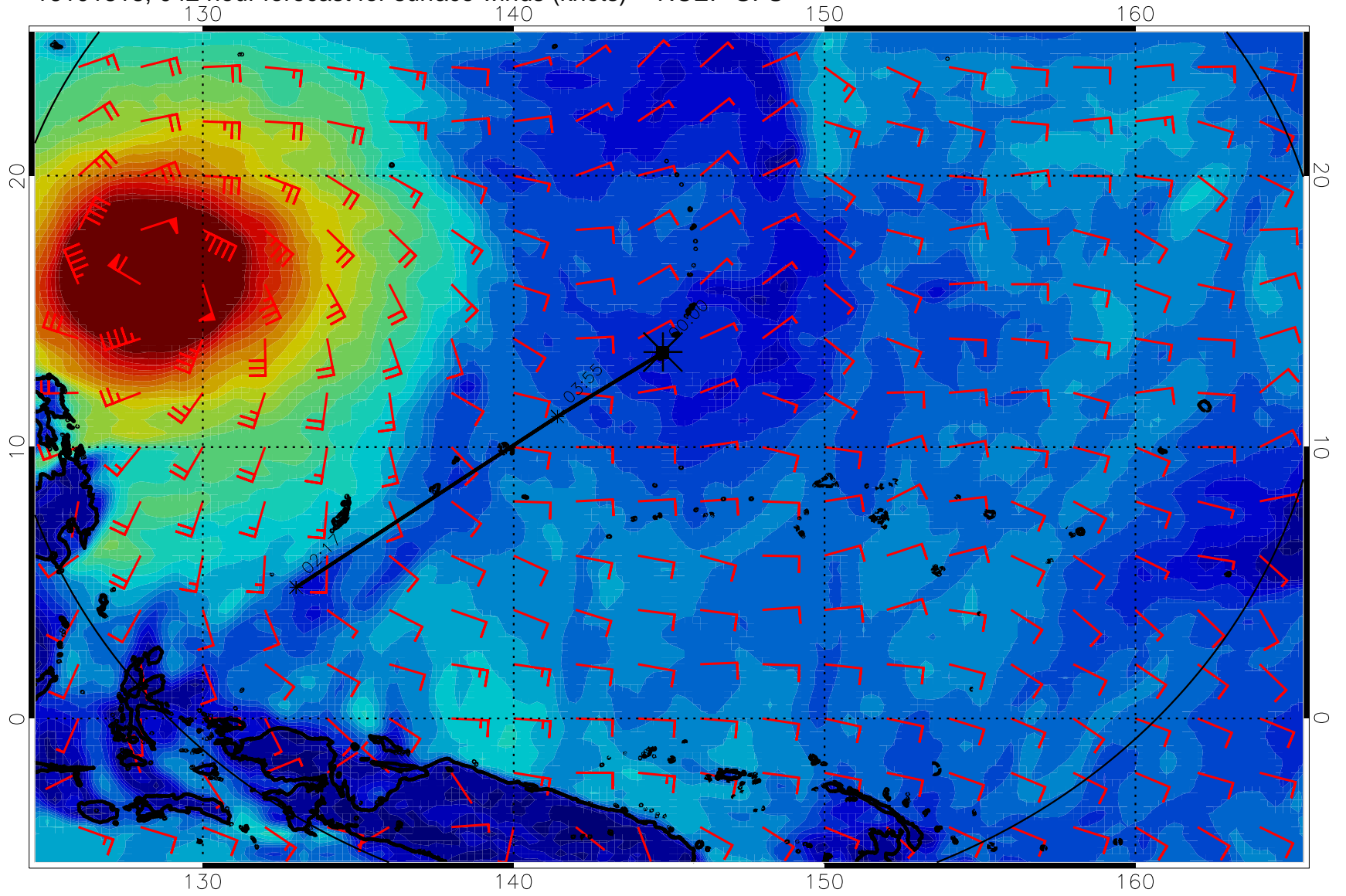
0      10      20      30  
Surface Wind Speed, knots

16101812, 036 hour forecast for surface winds (knots) -- NCEP GFS



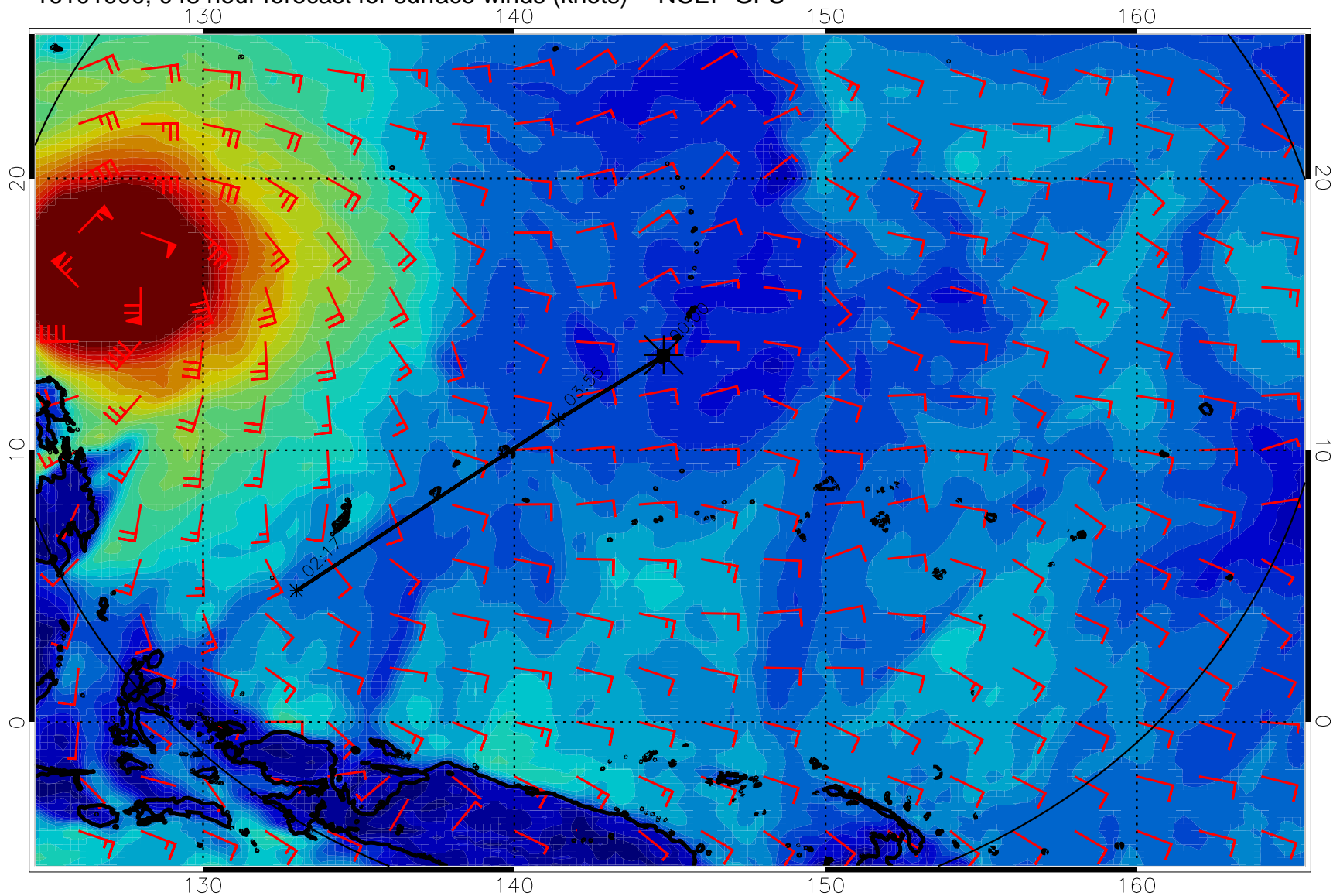
0      10      20      30  
Surface Wind Speed, knots

16101818, 042 hour forecast for surface winds (knots) -- NCEP GFS



0 10 20 30  
Surface Wind Speed, knots

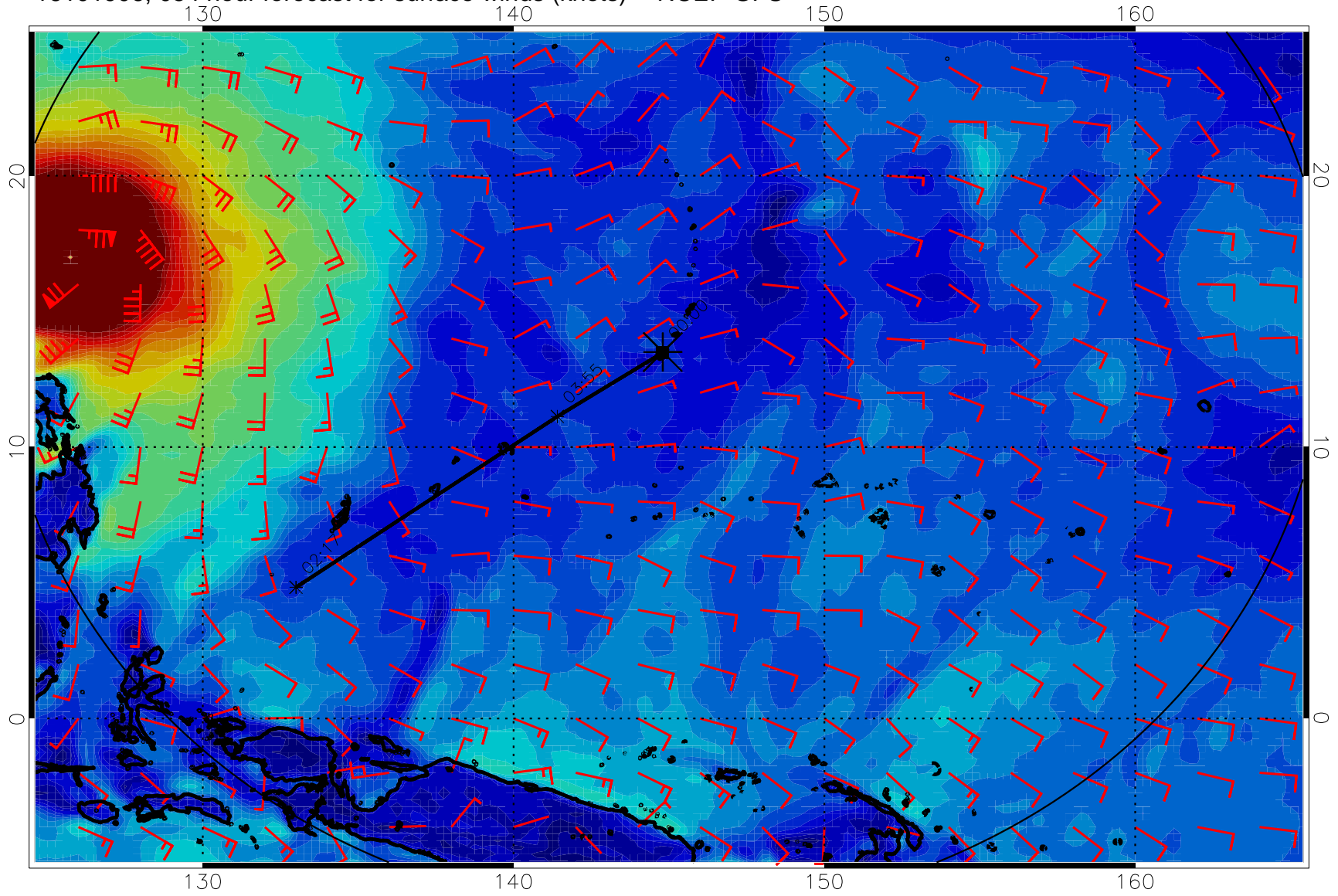
16101900, 048 hour forecast for surface winds (knots) -- NCEP GFS



0 10 20 30  
Surface Wind Speed, knots

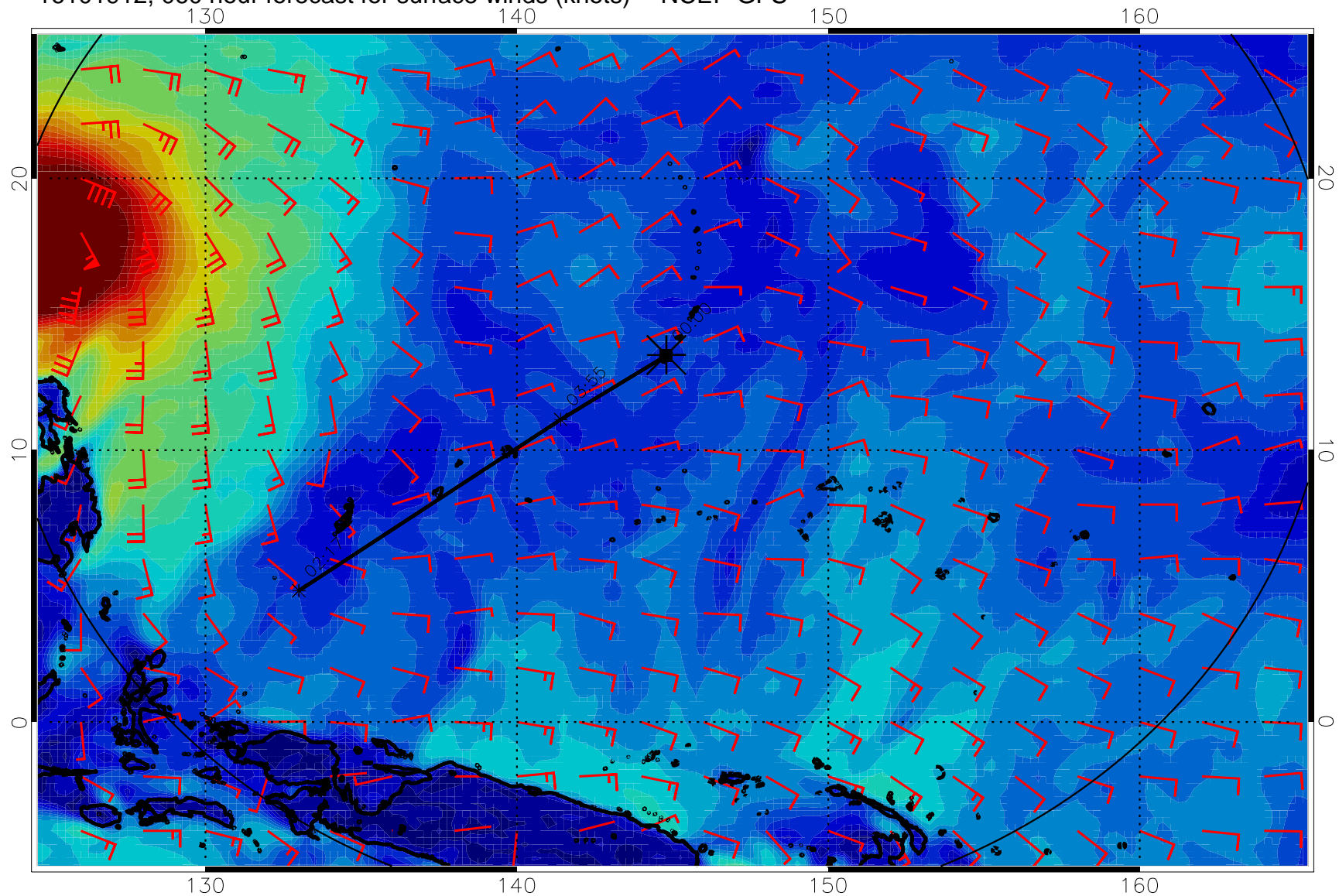


16101906, 054 hour forecast for surface winds (knots) -- NCEP GFS



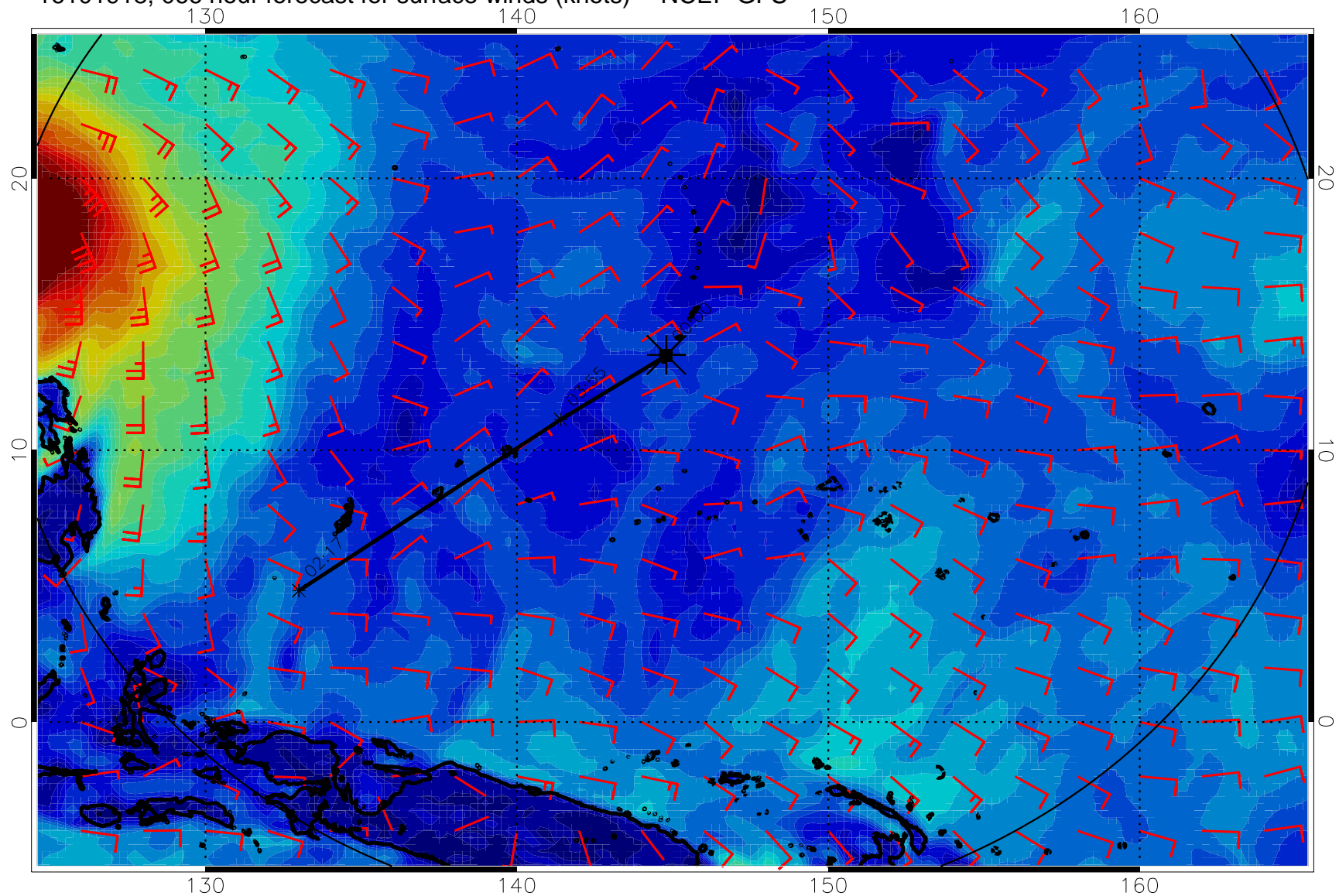
0 10 20 30  
Surface Wind Speed, knots

16101912, 060 hour forecast for surface winds (knots) -- NCEP GFS



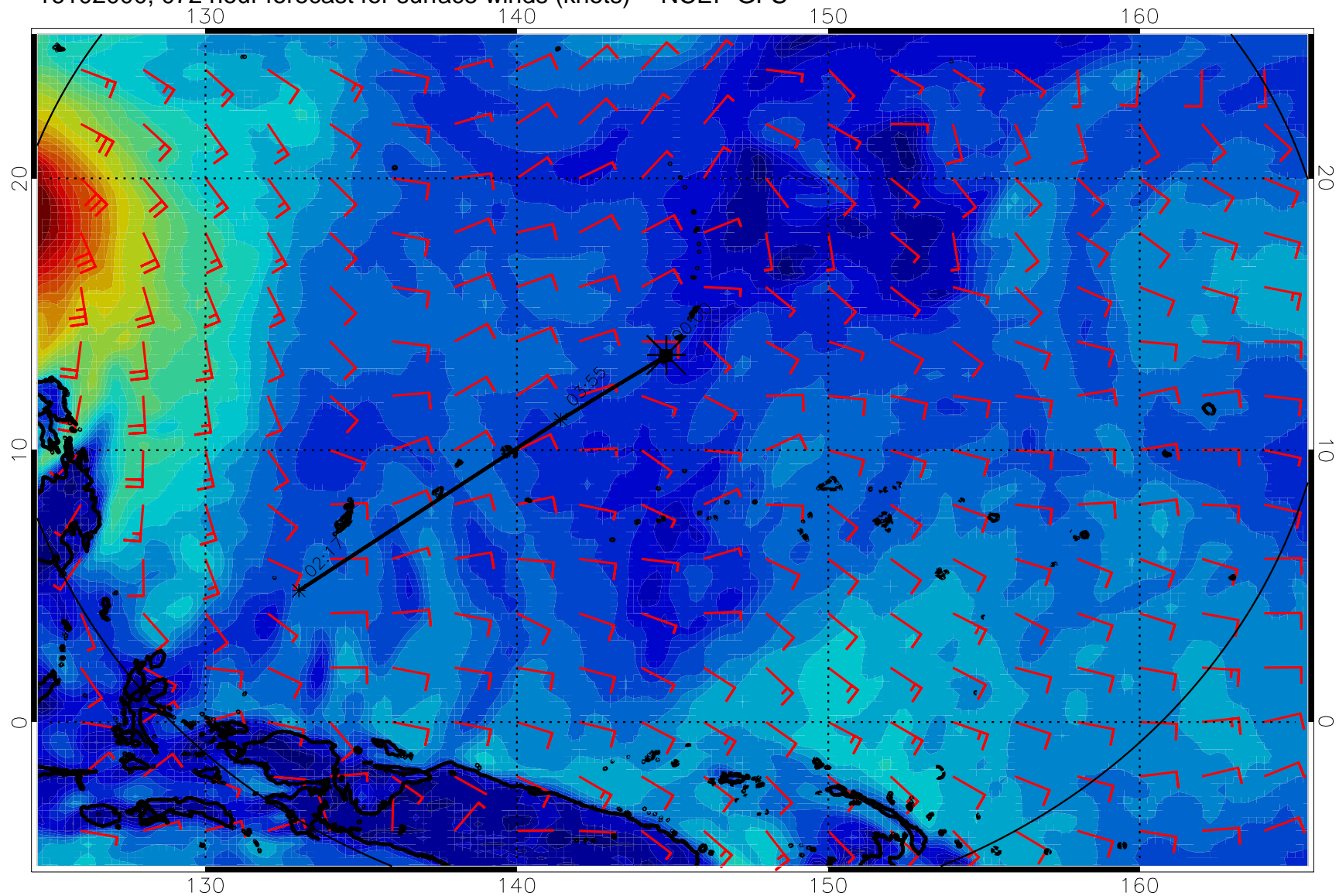
0 10 20 30  
Surface Wind Speed, knots

16101918, 066 hour forecast for surface winds (knots) -- NCEP GFS



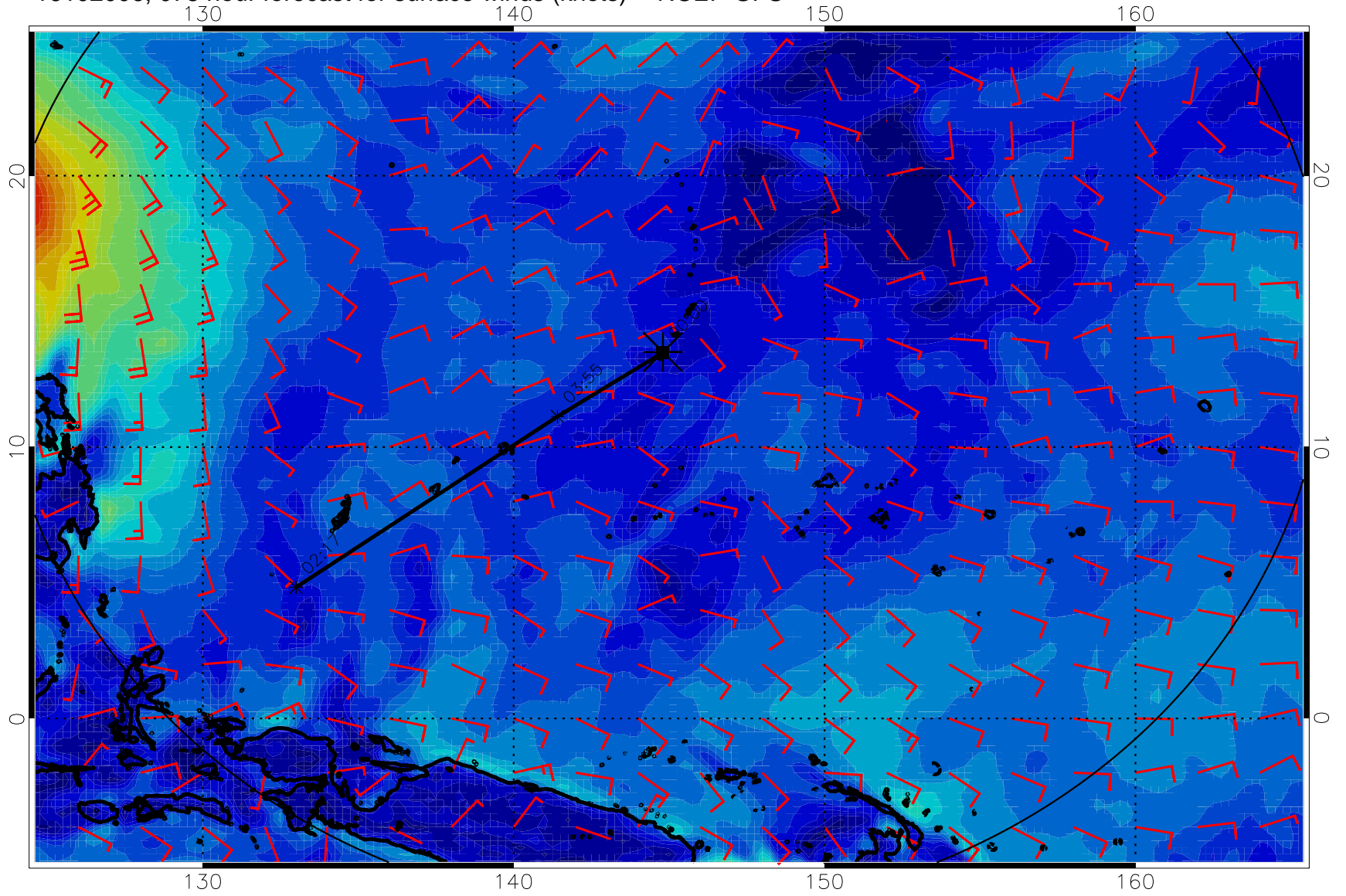
0 10 20 30  
Surface Wind Speed, knots

16102000, 072 hour forecast for surface winds (knots) -- NCEP GFS



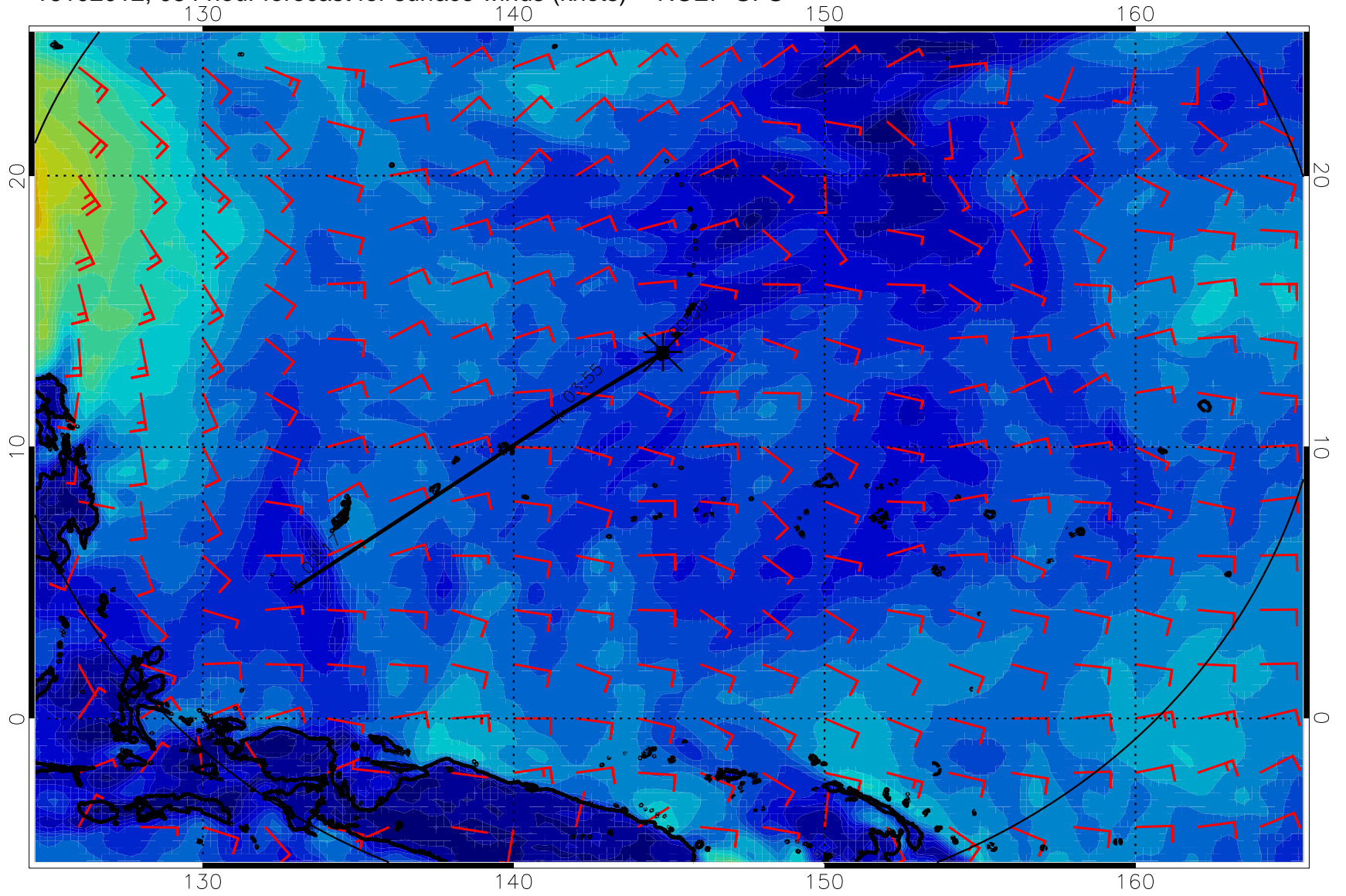
Surface Wind Speed, knots

16102006, 078 hour forecast for surface winds (knots) -- NCEP GFS



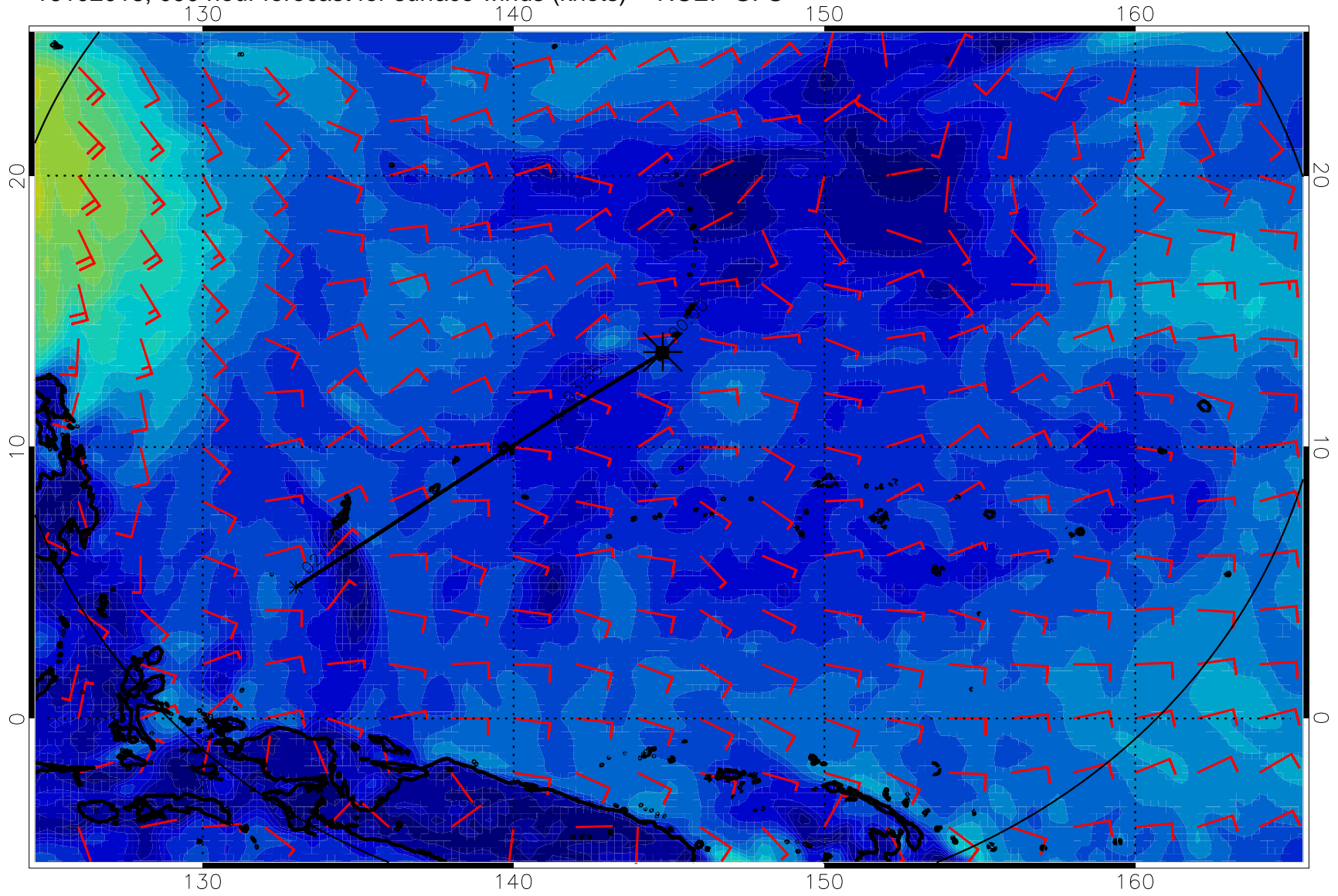
0 10 20 30  
Surface Wind Speed, knots

16102012, 084 hour forecast for surface winds (knots) -- NCEP GFS



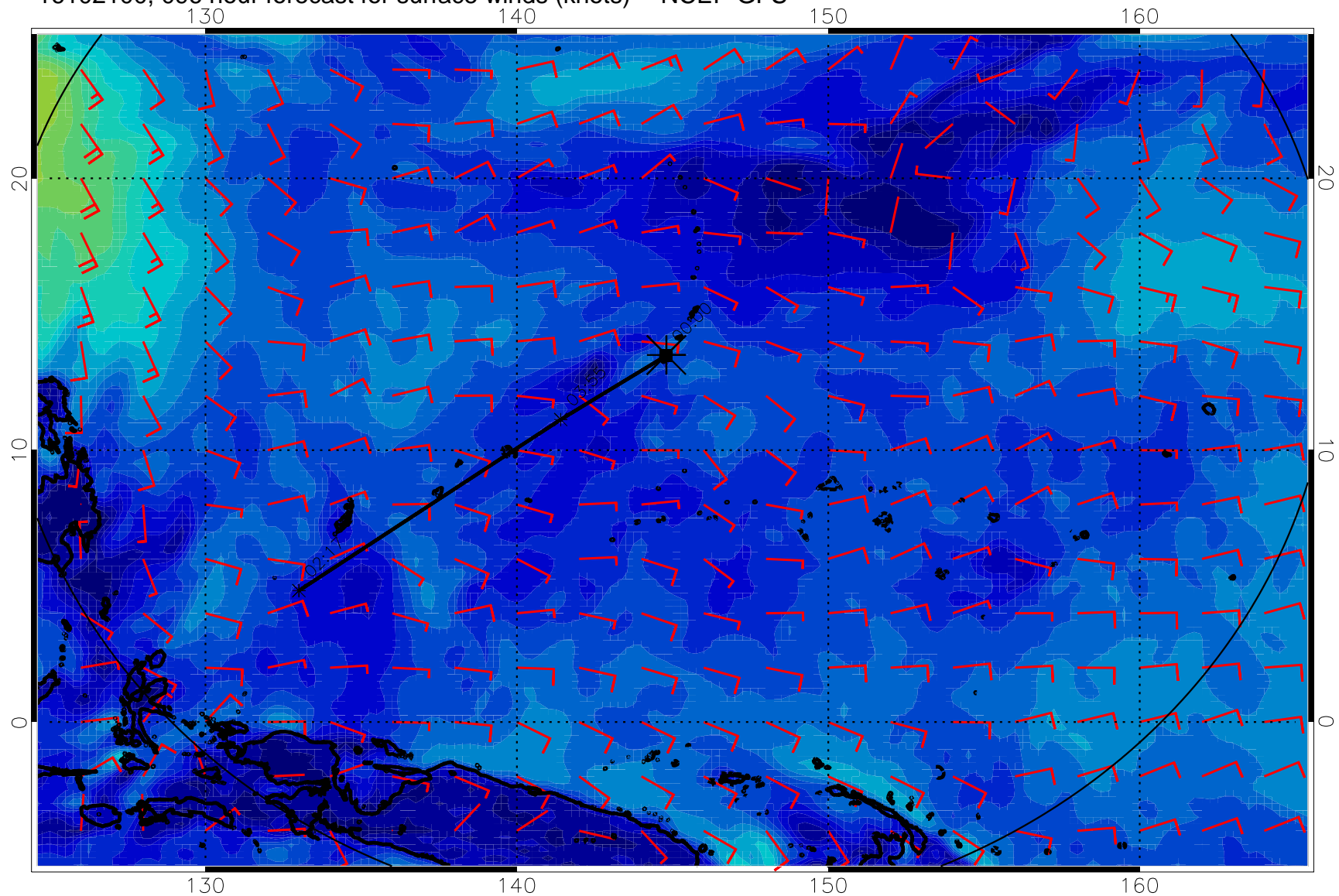
0 10 20 30  
Surface Wind Speed, knots

16102018, 090 hour forecast for surface winds (knots) -- NCEP GFS



0 10 20 30  
Surface Wind Speed, knots

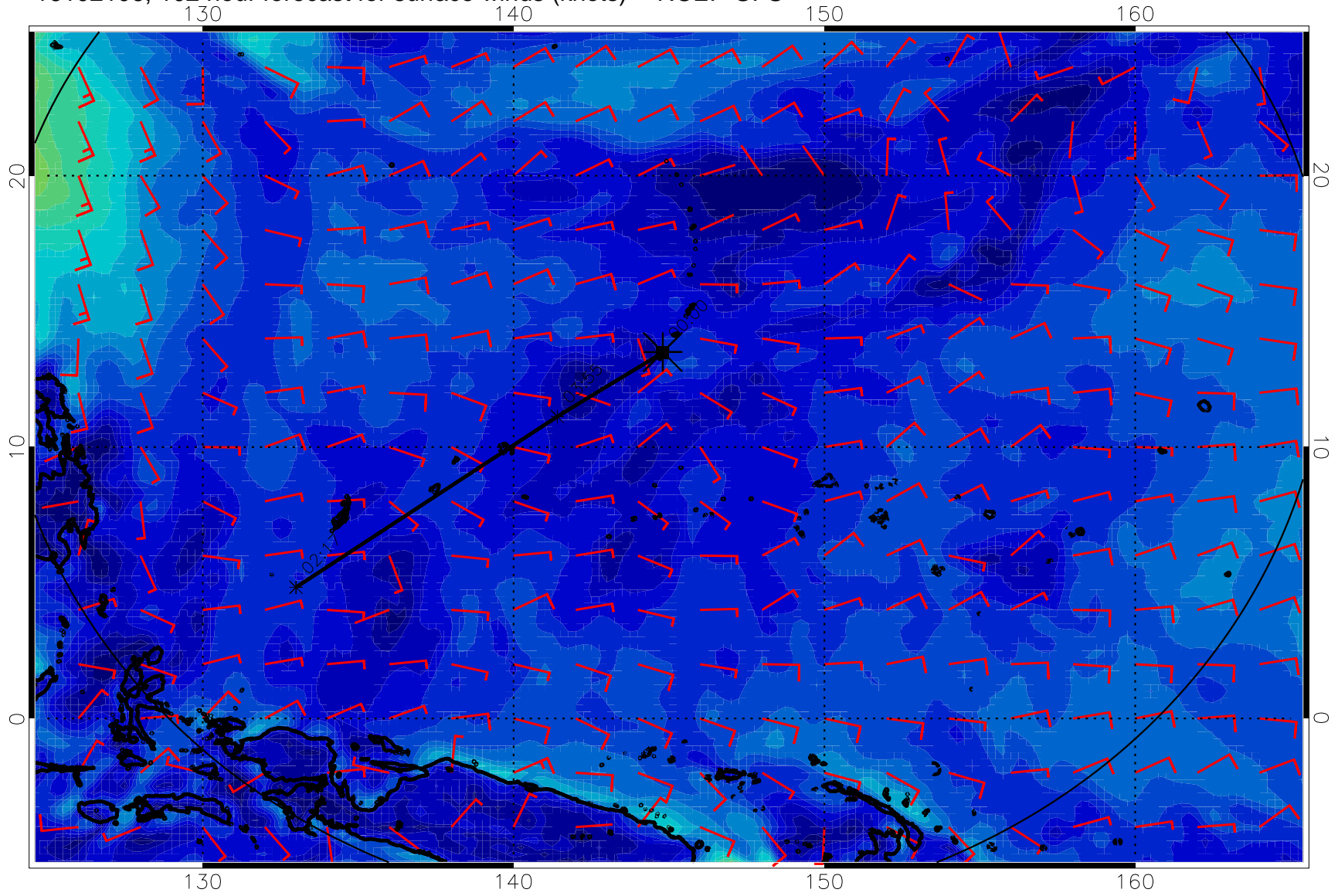
16102100, 096 hour forecast for surface winds (knots) -- NCEP GFS



0 10 20 30  
Surface Wind Speed, knots

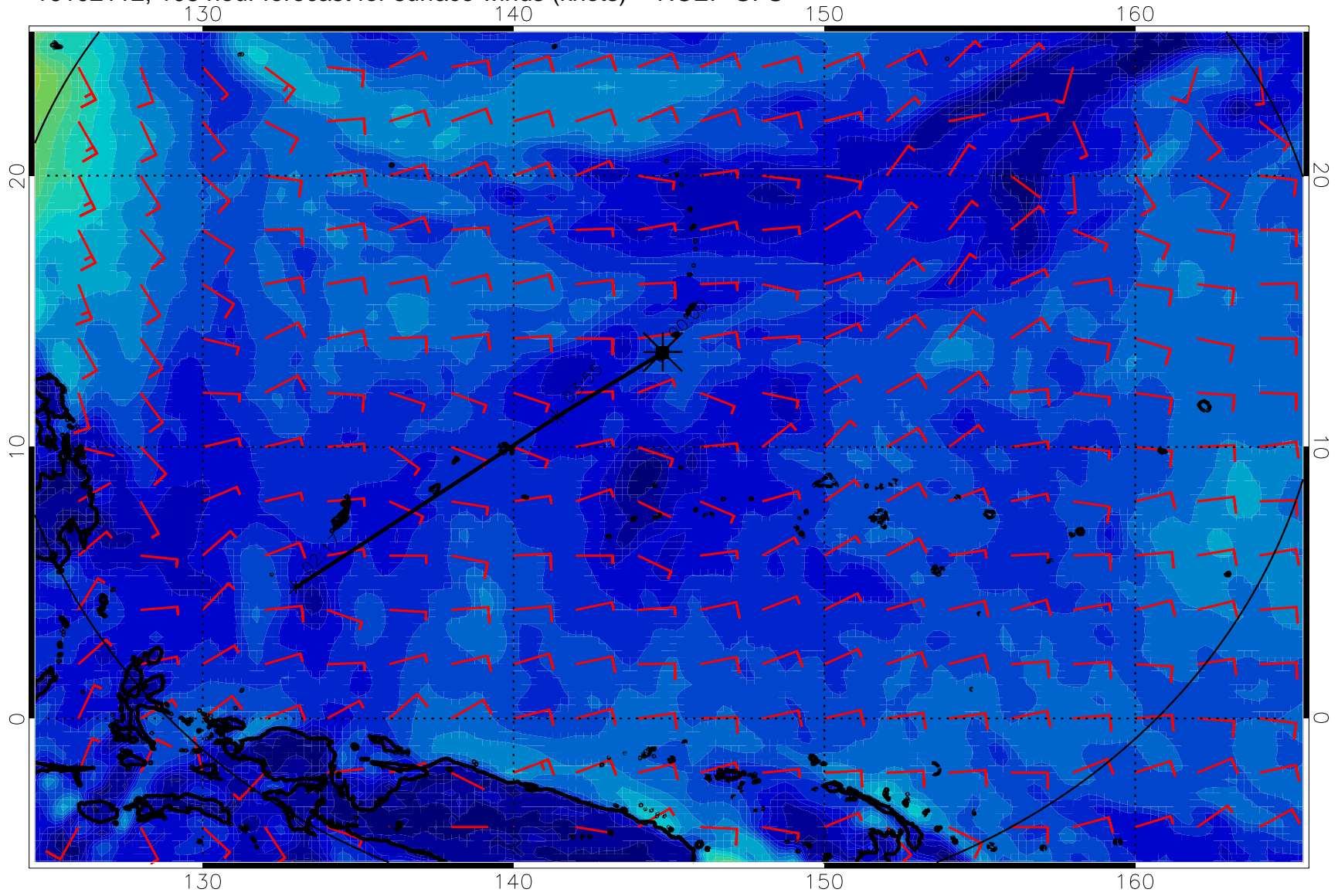


16102106, 102 hour forecast for surface winds (knots) -- NCEP GFS



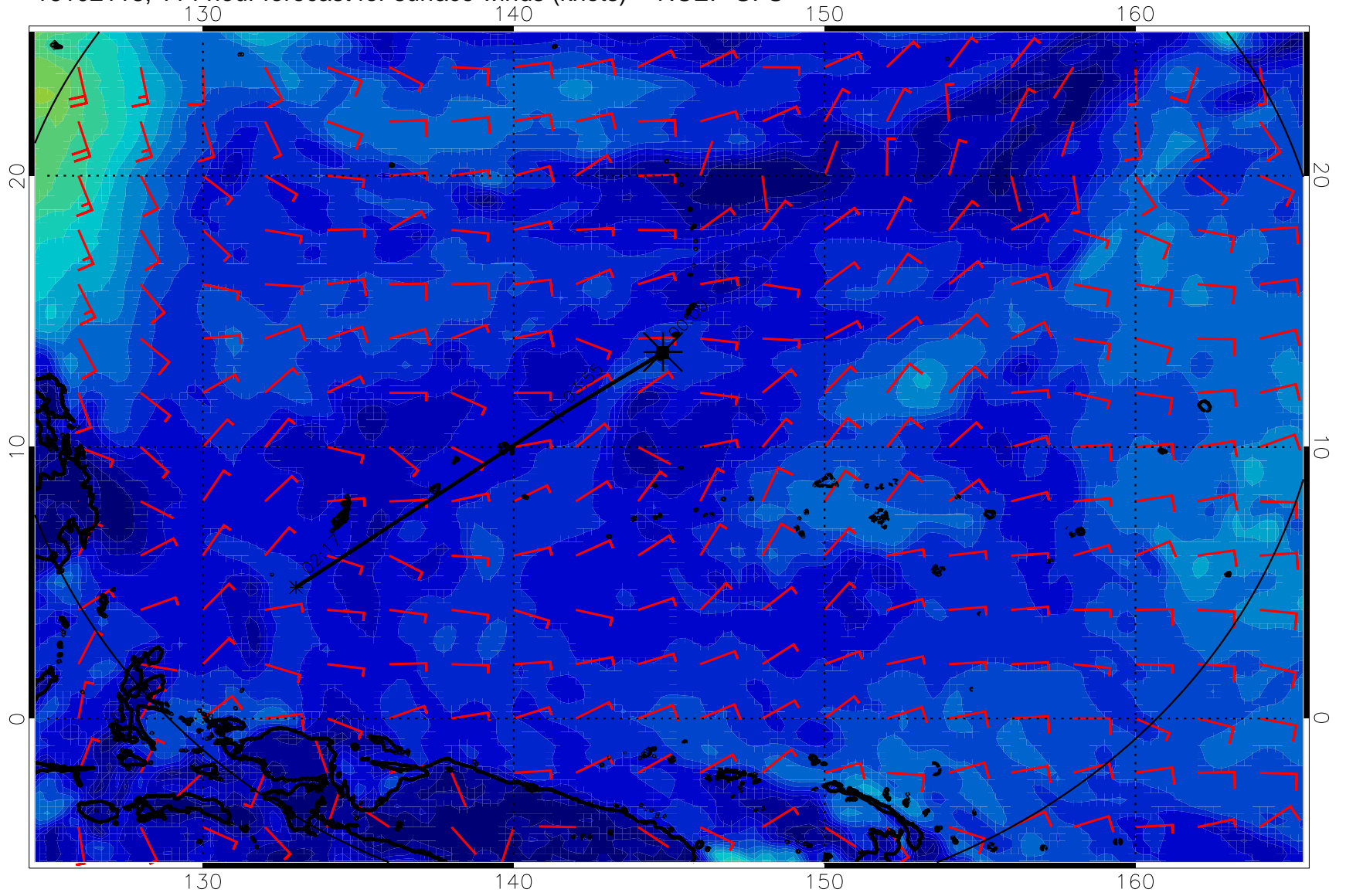
0      10      20      30  
Surface Wind Speed, knots

16102112, 108 hour forecast for surface winds (knots) -- NCEP GFS



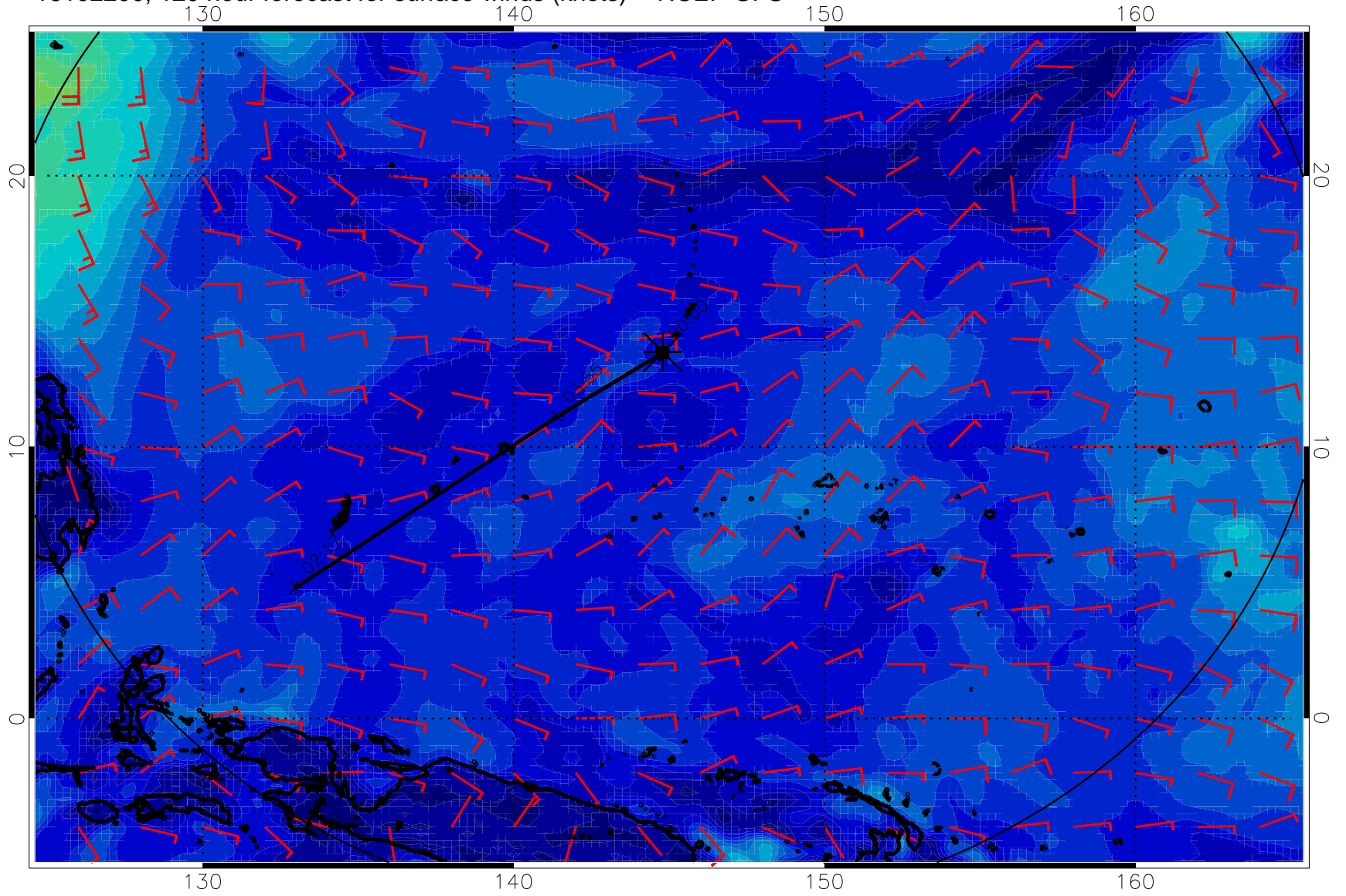
0      10      20      30  
Surface Wind Speed, knots

16102118, 114 hour forecast for surface winds (knots) -- NCEP GFS



0 10 20 30  
Surface Wind Speed, knots

16102200, 120 hour forecast for surface winds (knots) -- NCEP GFS



0      10      20      30  
Surface Wind Speed, knots