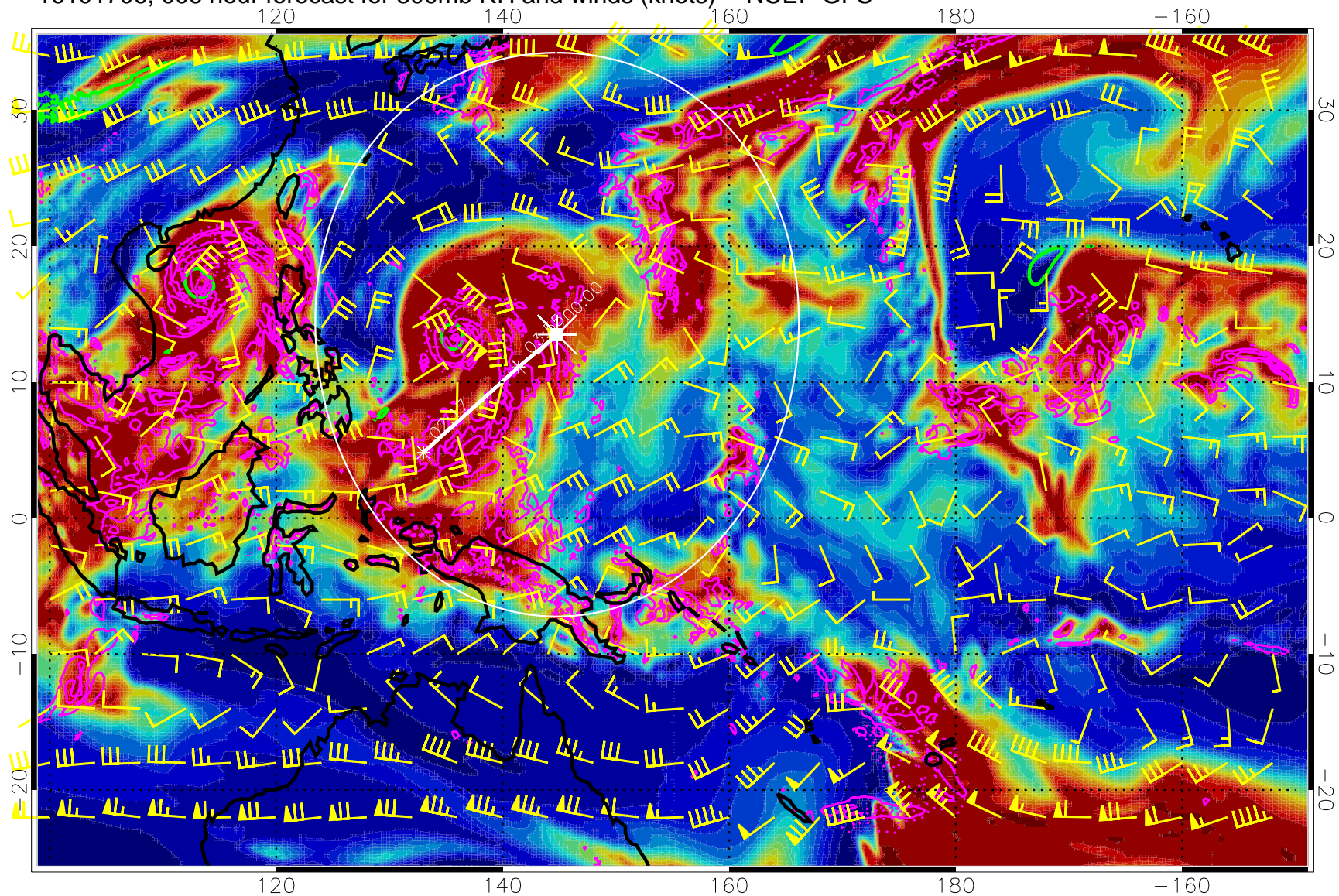


16101706, 006 hour forecast for 300mb RH and winds (knots) -- NCEP GFS



0 20 40 60 80 100  
RH, %

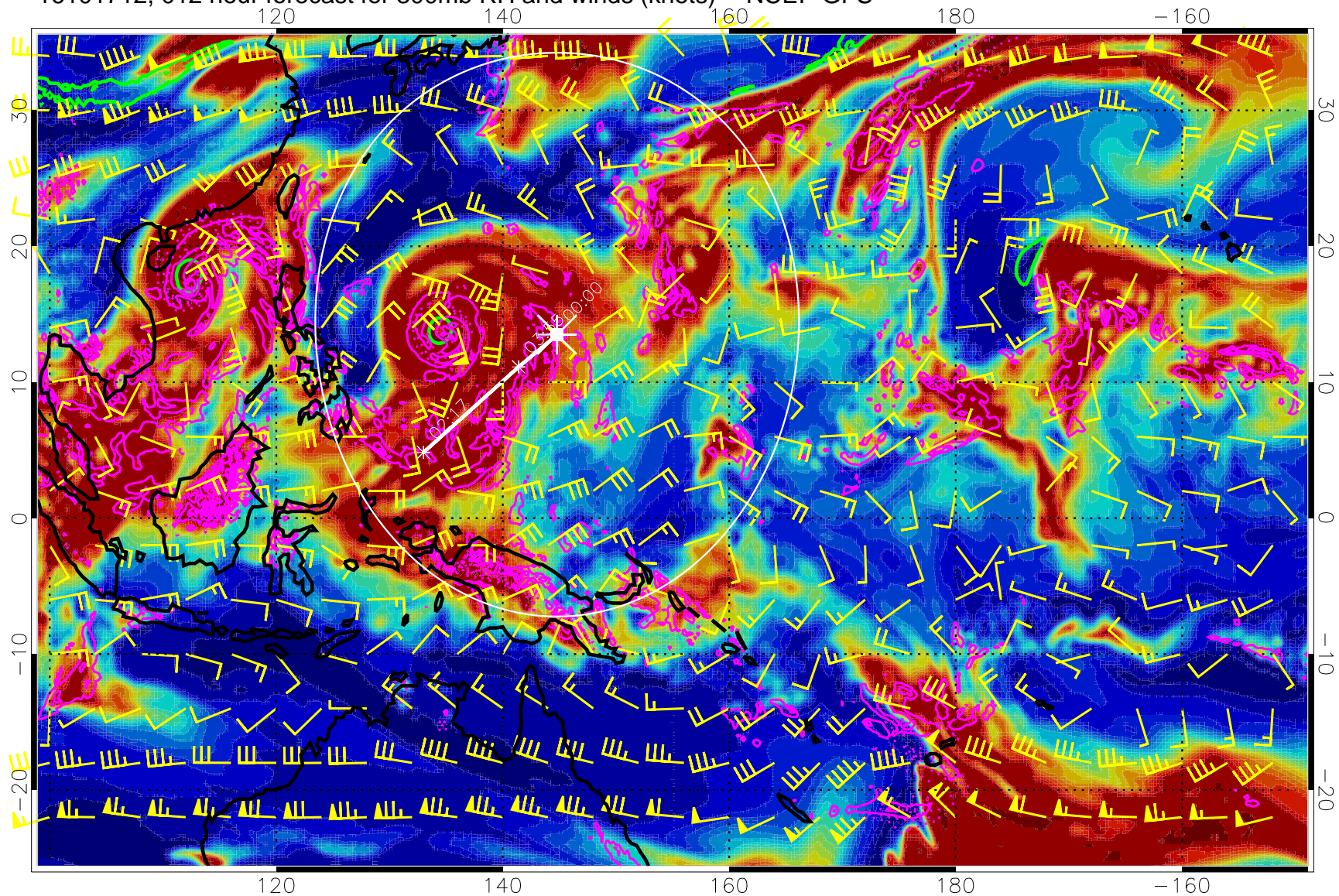
Precip (tot dot, conv sol) mm/day 40 mm/day contours, min 20

EPV Tropopause (2 PVU) Position

Range ring of 2304 km



16101712, 012 hour forecast for 300mb RH and winds (knots) -- NCEP GFS



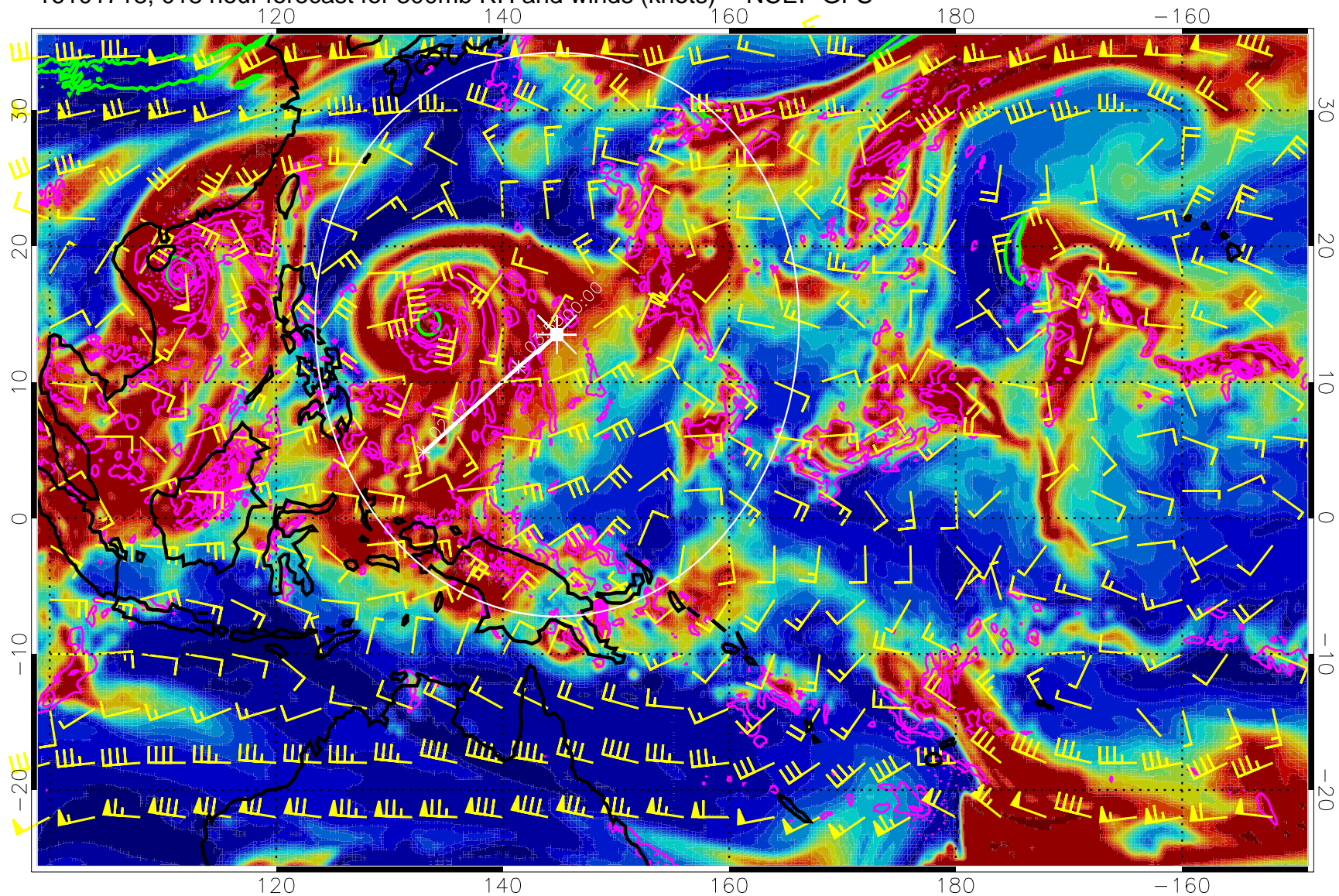
Precip (tot dot, conv sol) mm/day 40 mm/day contours, min 20

EPV Tropopause (2 PVU) Position

Range ring of 2304 km



16101718, 018 hour forecast for 300mb RH and winds (knots) -- NCEP GFS



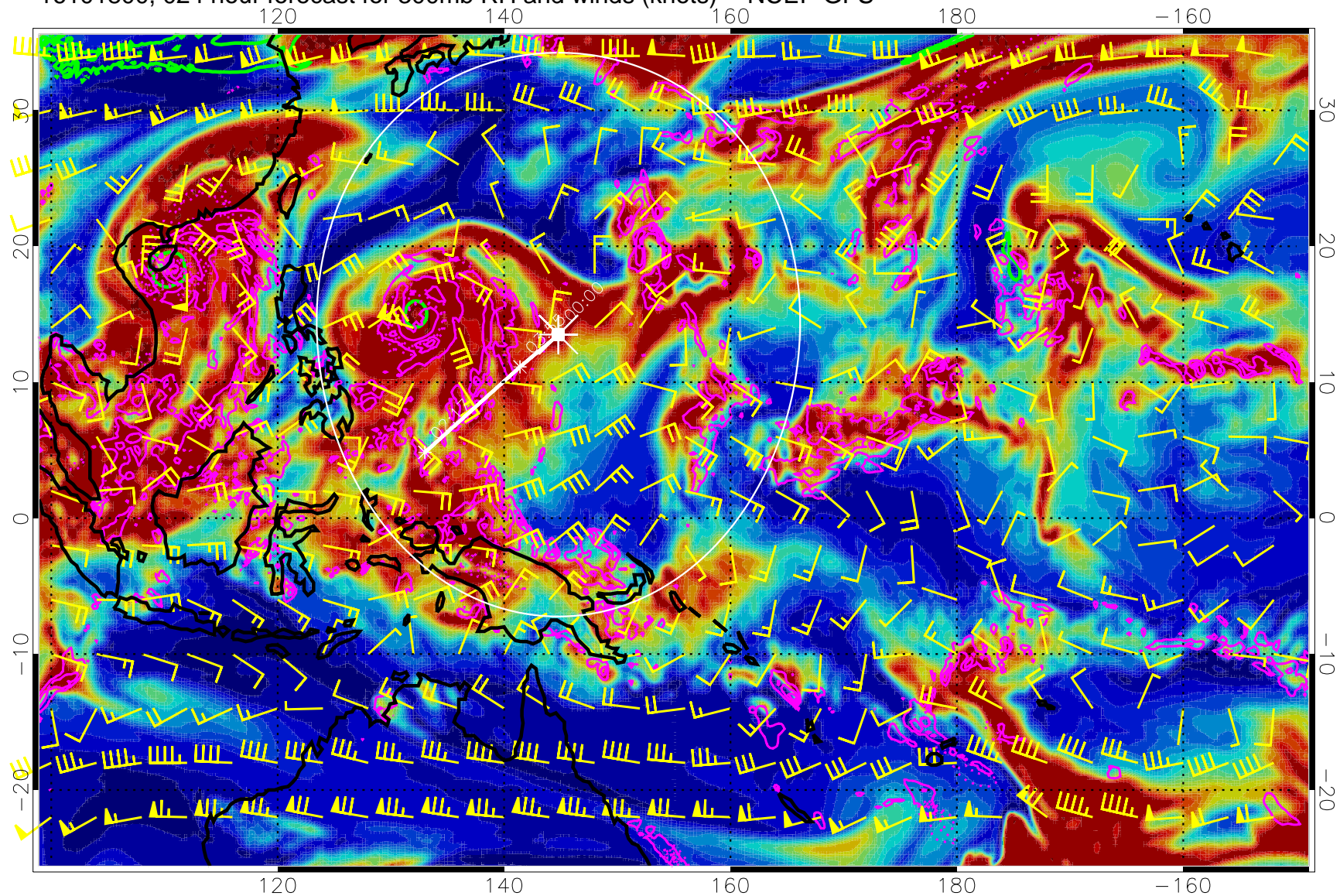
Precip (tot dot, conv sol) mm/day 40 mm/day contours, min 20

EPV Tropopause (2 PVU) Position

Range ring of 2304 km



16101800, 024 hour forecast for 300mb RH and winds (knots) -- NCEP GFS



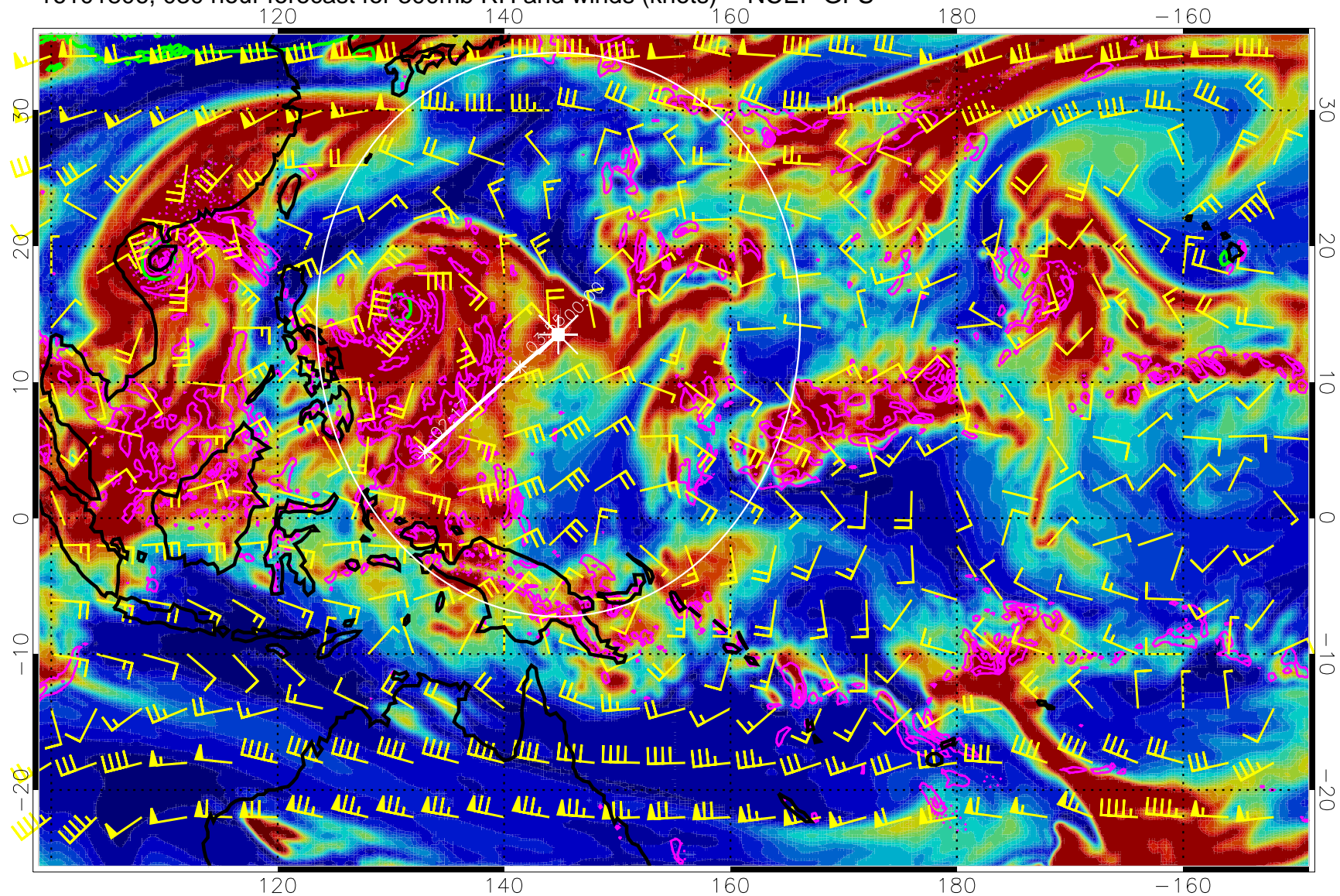
Precip (tot dot, conv sol) mm/day 40 mm/day contours, min 20

EPV Tropopause (2 PVU) Position

Range ring of 2304 km



16101806, 030 hour forecast for 300mb RH and winds (knots) -- NCEP GFS



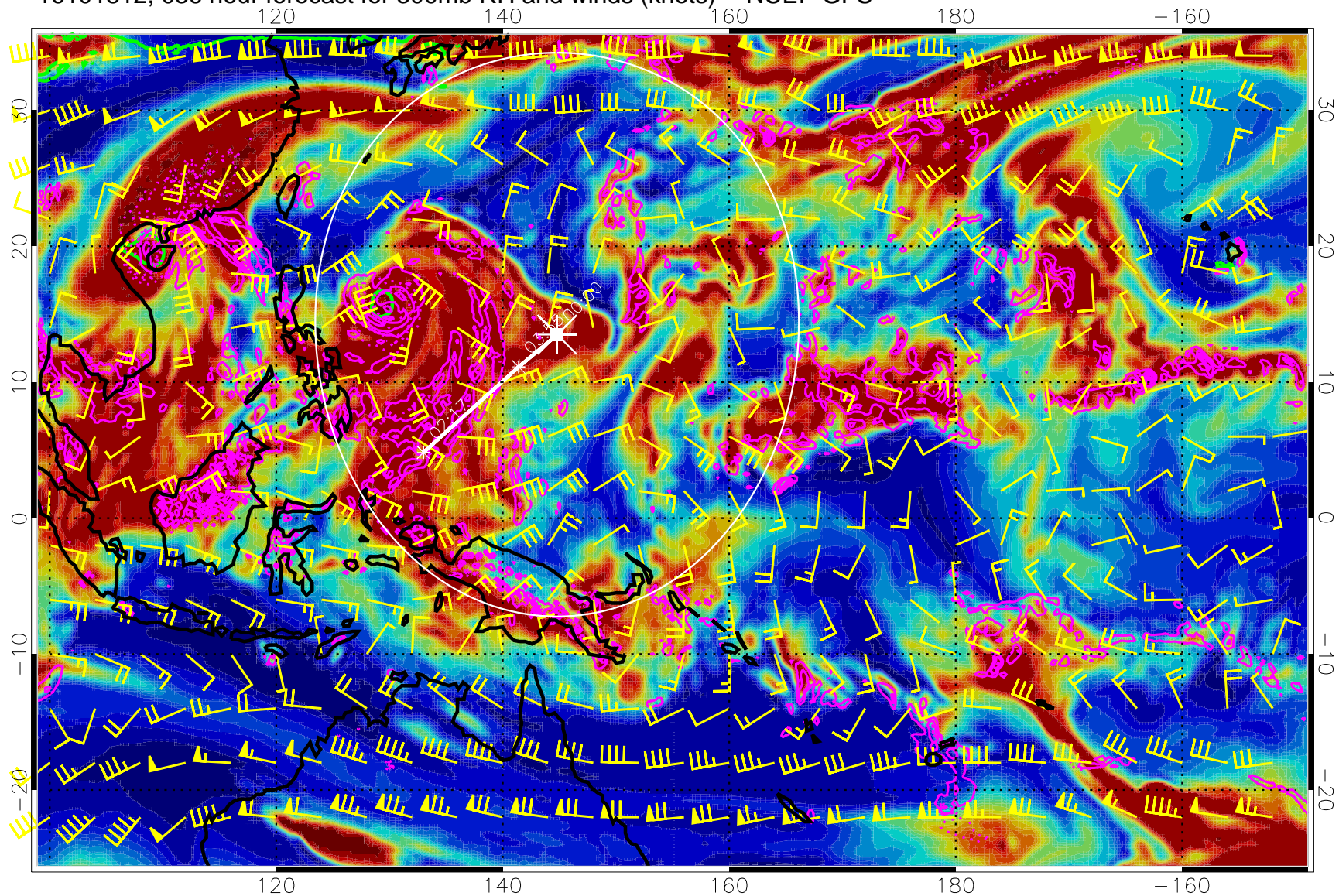
Precip (tot dot, conv sol) mm/day 40 mm/day contours, min 20

EPV Tropopause (2 PVU) Position

Range ring of 2304 km



16101812, 036 hour forecast for 300mb RH and winds (knots) -- NCEP GFS



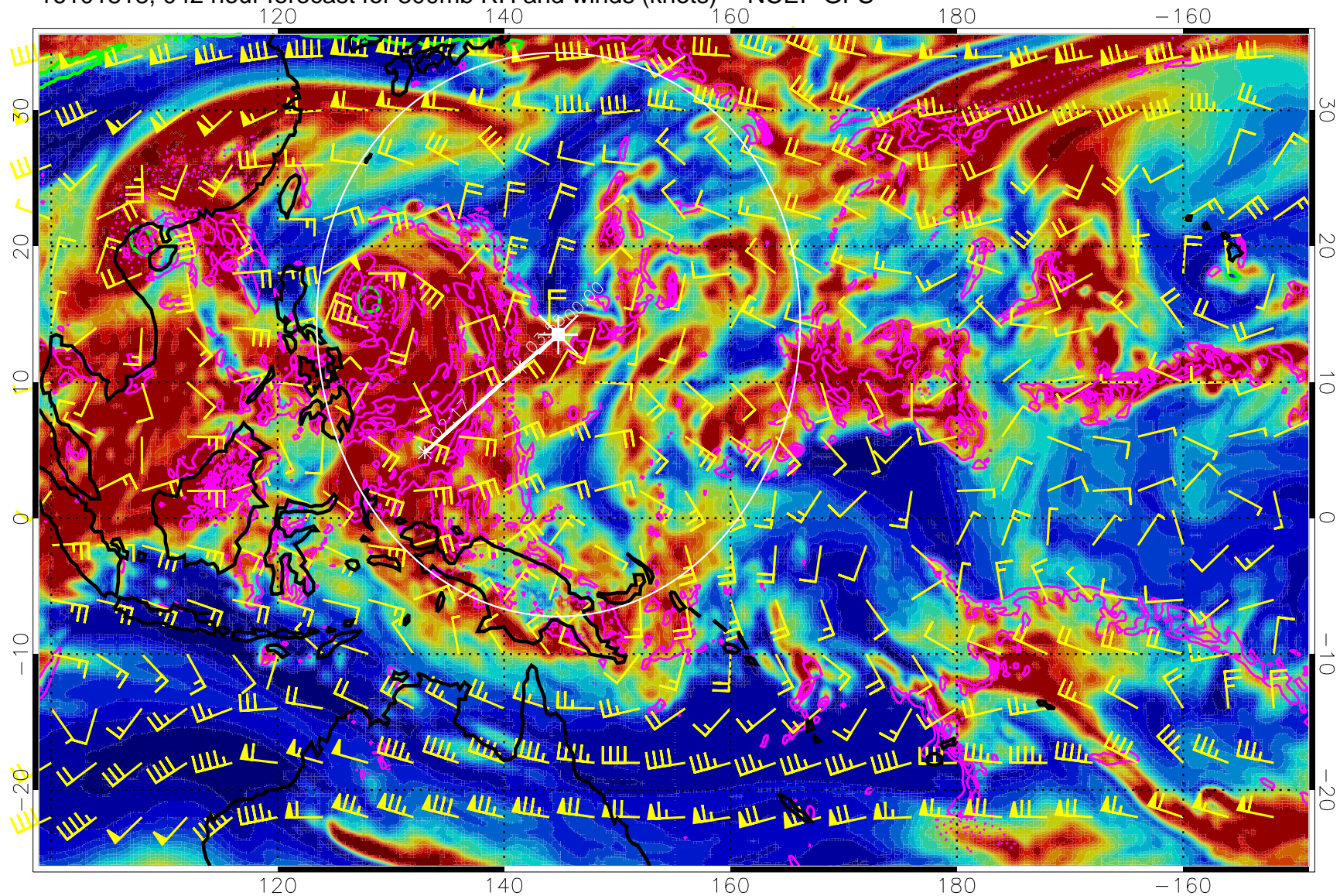
Precip (tot dot, conv sol) mm/day 40 mm/day contours, min 20

EPV Tropopause (2 PVU) Position

Range ring of 2304 km



16101818, 042 hour forecast for 300mb RH and winds (knots) -- NCEP GFS



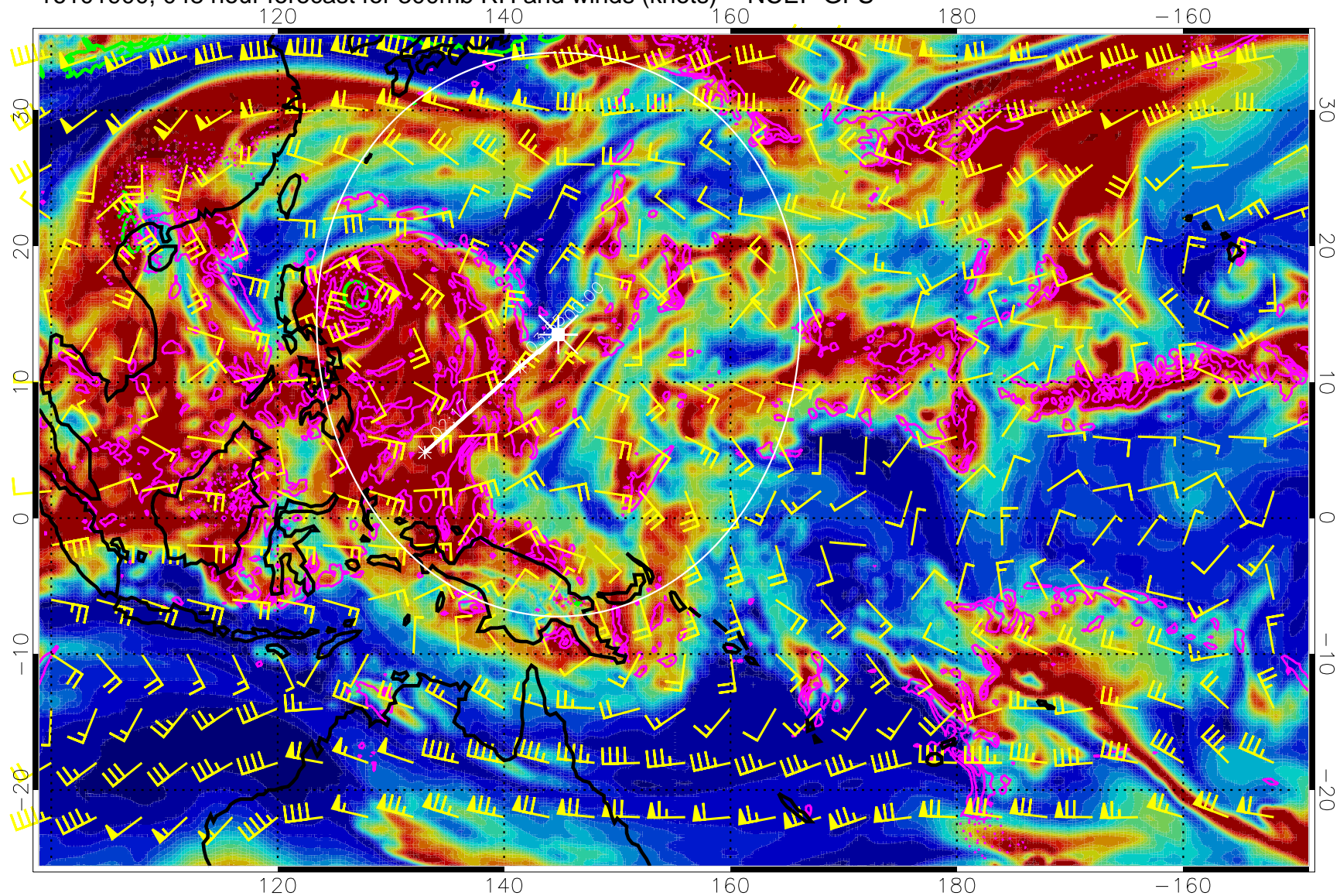
Precip (tot dot, conv sol) mm/day 40 mm/day contours, min 20

EPV Tropopause (2 PVU) Position

Range ring of 2304 km



16101900, 048 hour forecast for 300mb RH and winds (knots) -- NCEP GFS



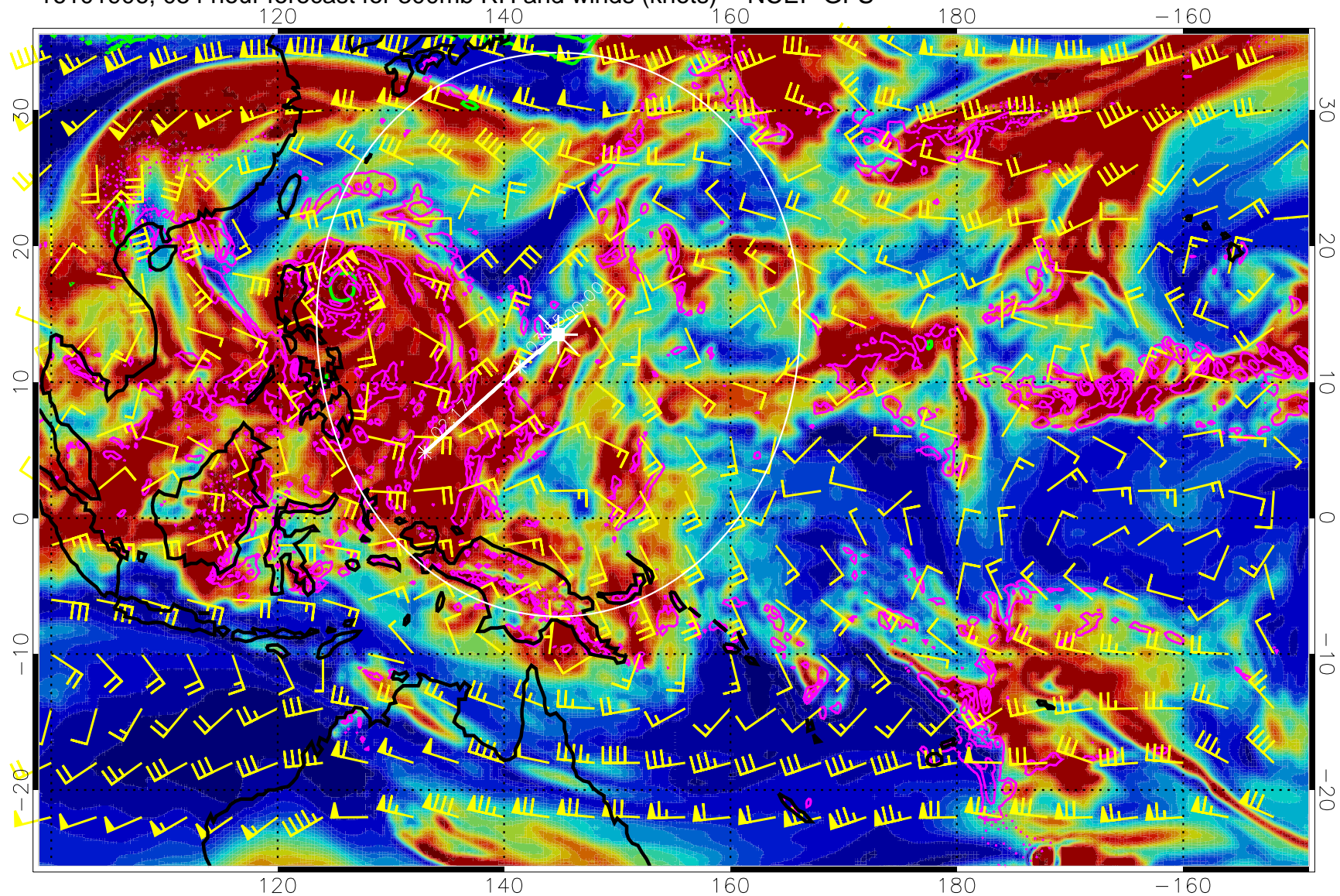
Precip (tot dot, conv sol) mm/day 40 mm/day contours, min 20

EPV Tropopause (2 PVU) Position

Range ring of 2304 km



16101906, 054 hour forecast for 300mb RH and winds (knots) -- NCEP GFS



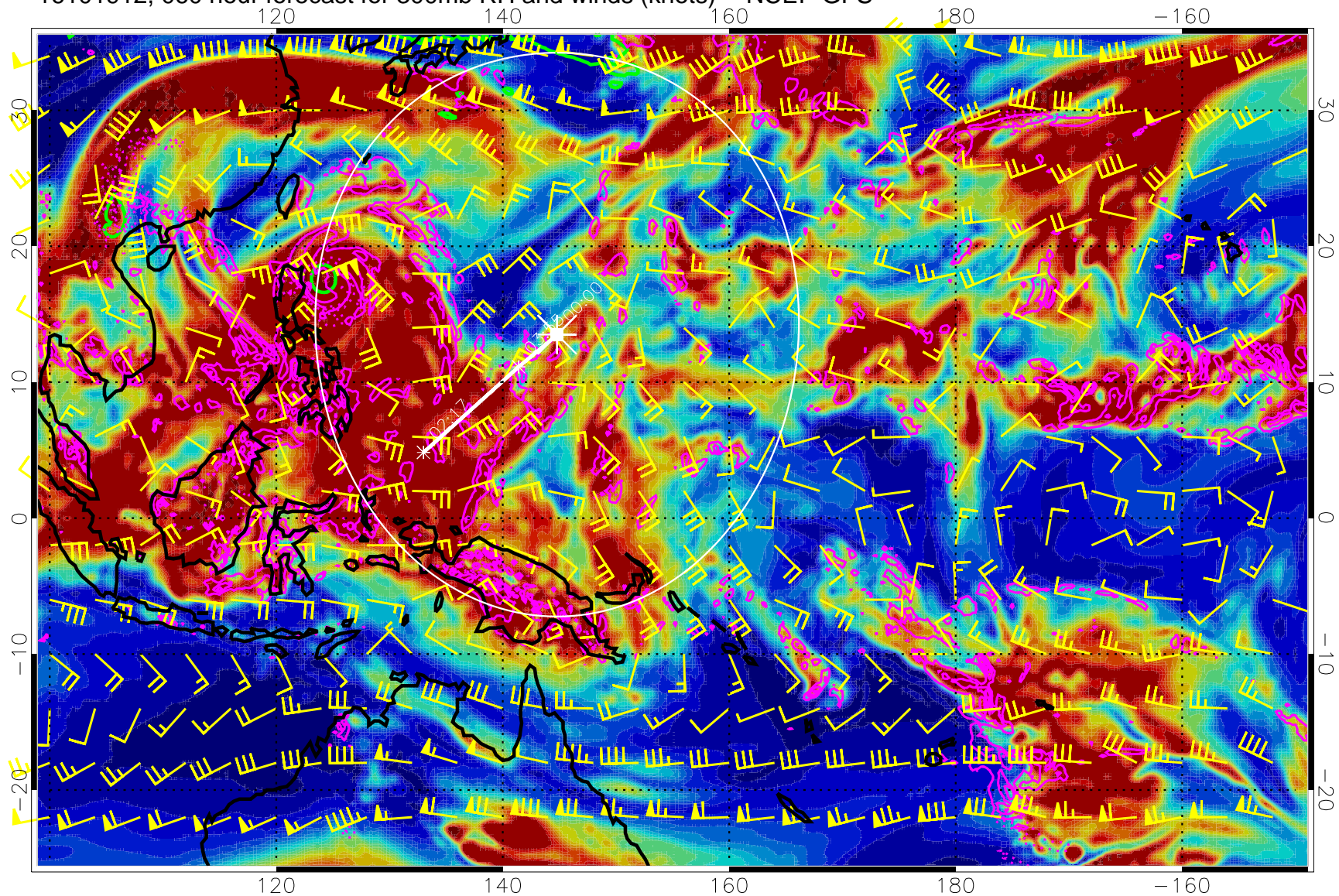
Precip (tot dot, conv sol) mm/day 40 mm/day contours, min 20

EPV Tropopause (2 PVU) Position

Range ring of 2304 km



16101912, 060 hour forecast for 300mb RH and winds (knots) -- NCEP GFS



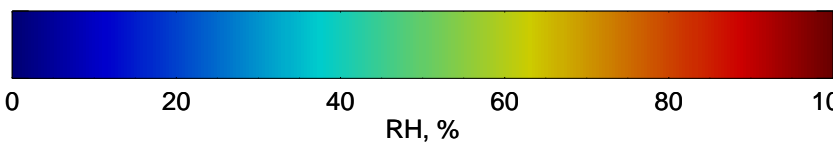
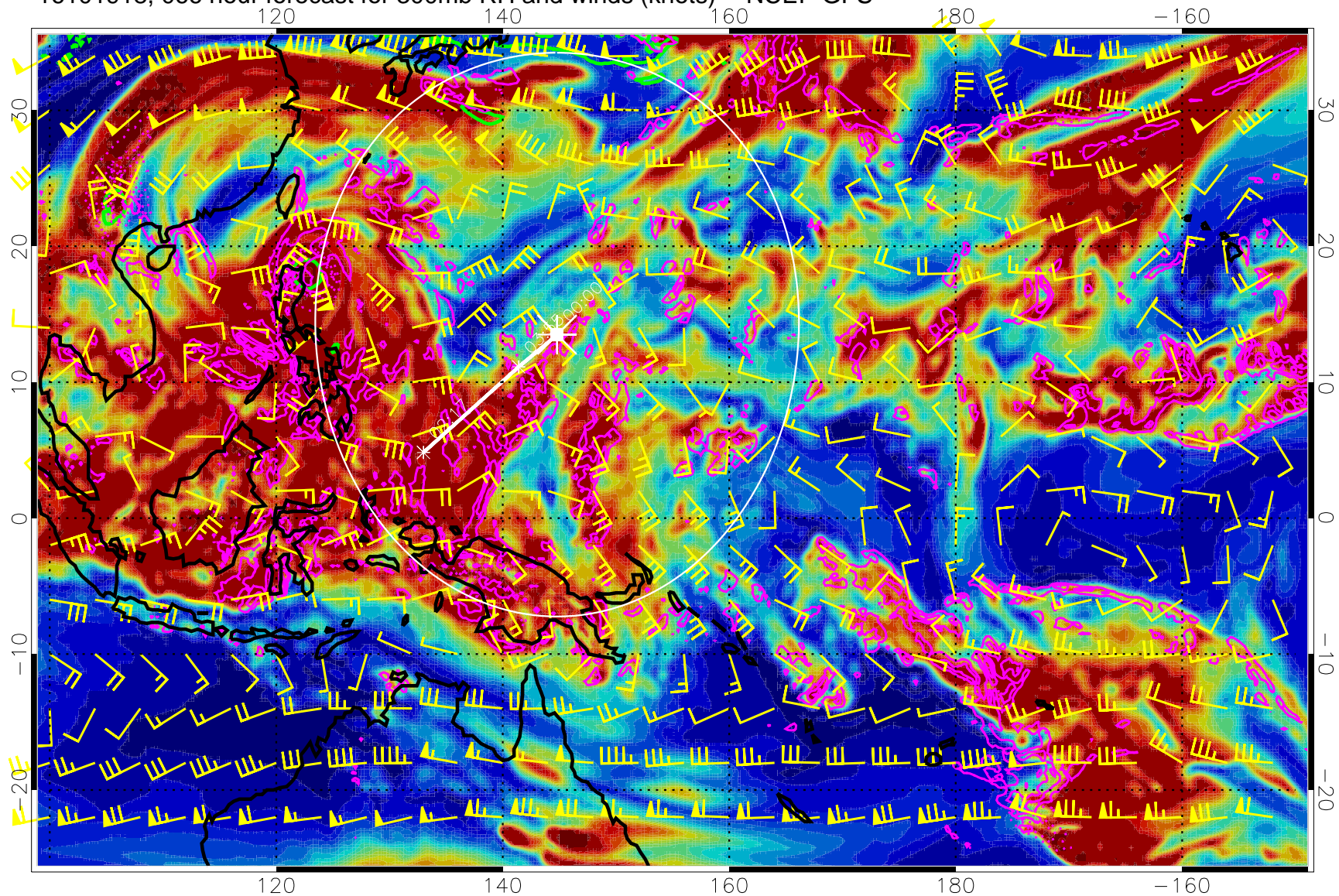
Precip (tot dot, conv sol) mm/day 40 mm/day contours, min 20

EPV Tropopause (2 PVU) Position

Range ring of 2304 km



16101918, 066 hour forecast for 300mb RH and winds (knots) -- NCEP GFS



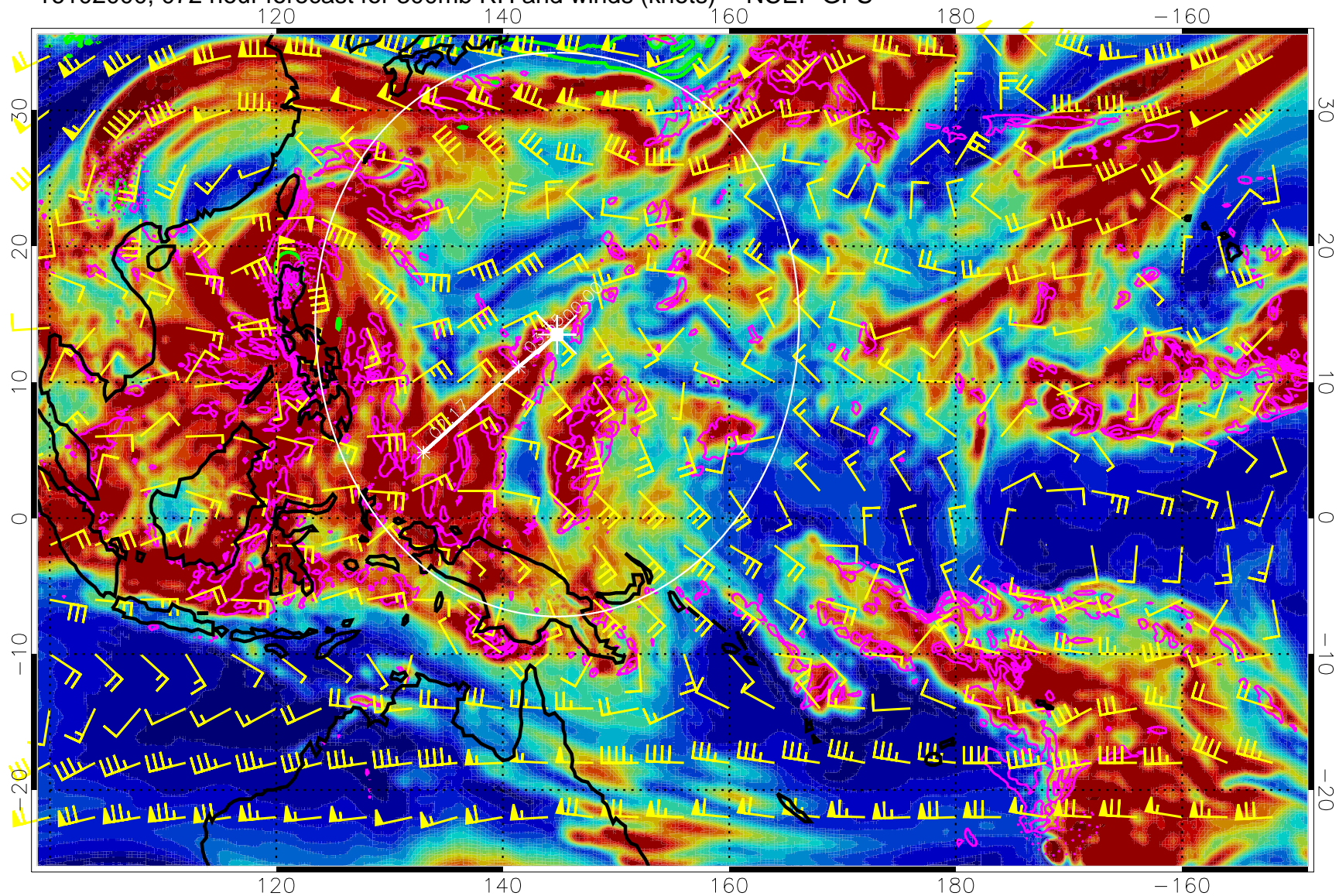
Precip (tot dot, conv sol) mm/day 40 mm/day contours, min 20

EPV Tropopause (2 PVU) Position

Range ring of 2304 km



16102000, 072 hour forecast for 300mb RH and winds (knots) -- NCEP GFS



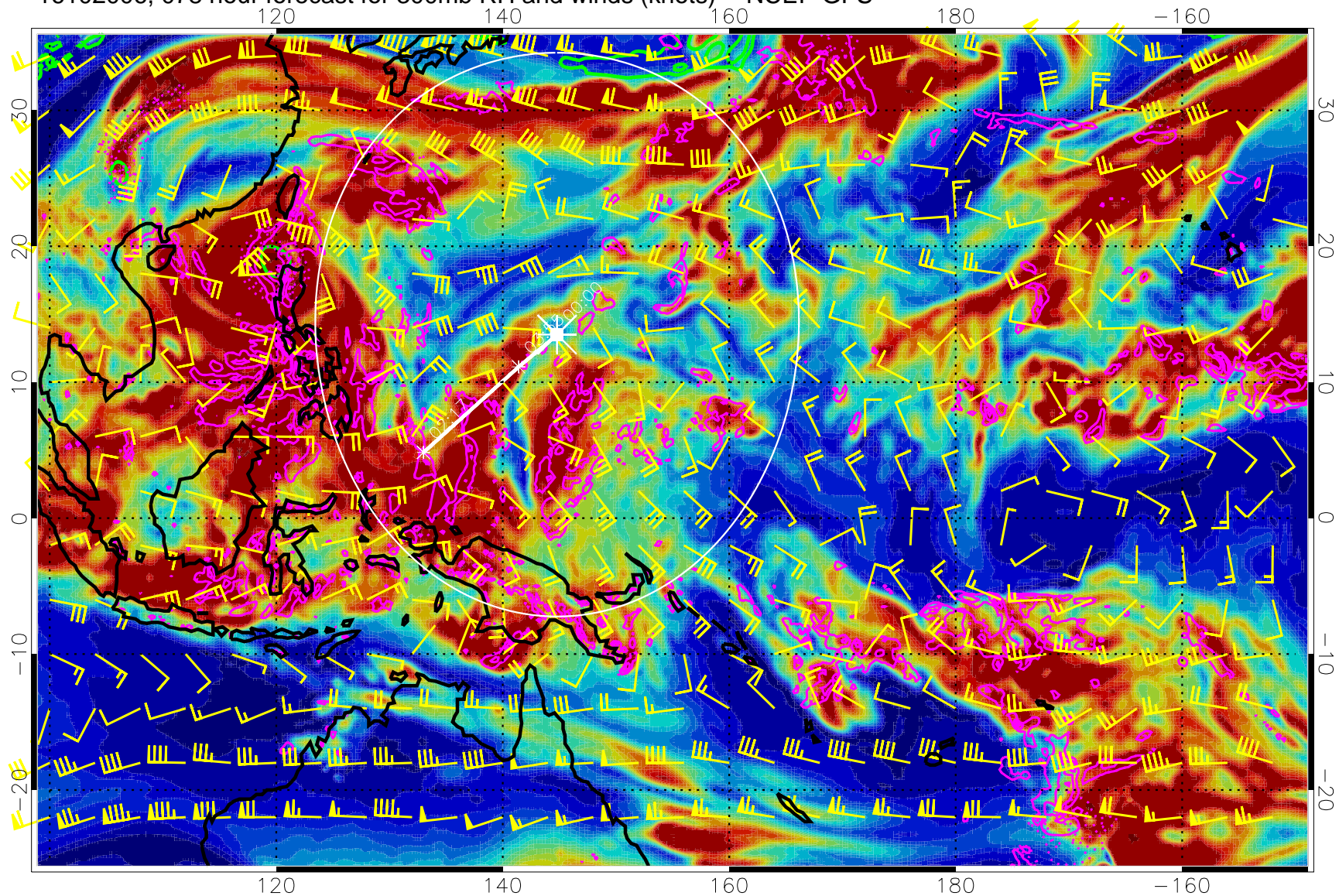
Precip (tot dot, conv sol) mm/day 40 mm/day contours, min 20

EPV Tropopause (2 PVU) Position

Range ring of 2304 km



16102006, 078 hour forecast for 300mb RH and winds (knots) -- NCEP GFS



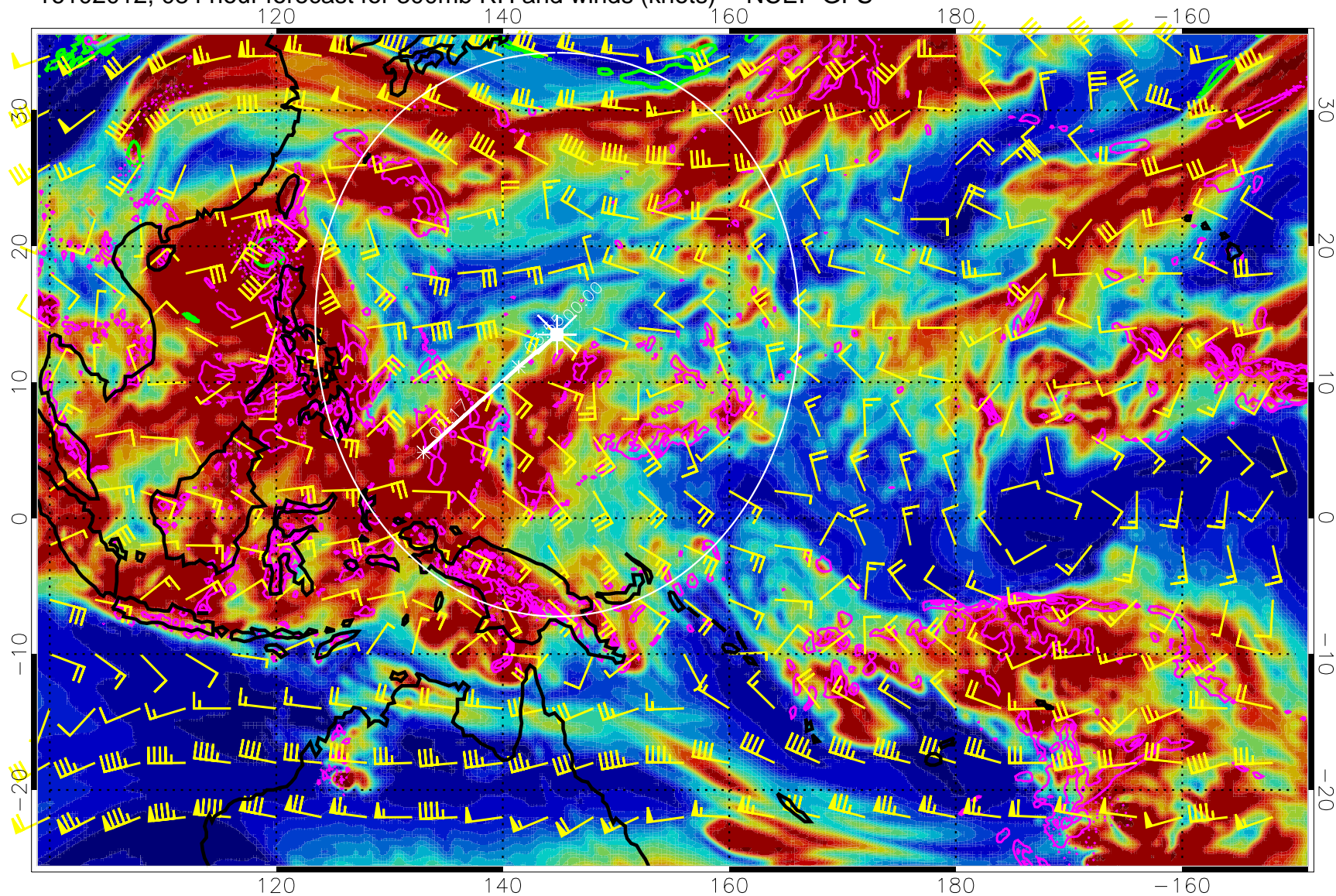
Precip (tot dot, conv sol) mm/day 40 mm/day contours, min 20

EPV Tropopause (2 PVU) Position

Range ring of 2304 km



16102012, 084 hour forecast for 300mb RH and winds (knots) -- NCEP GFS



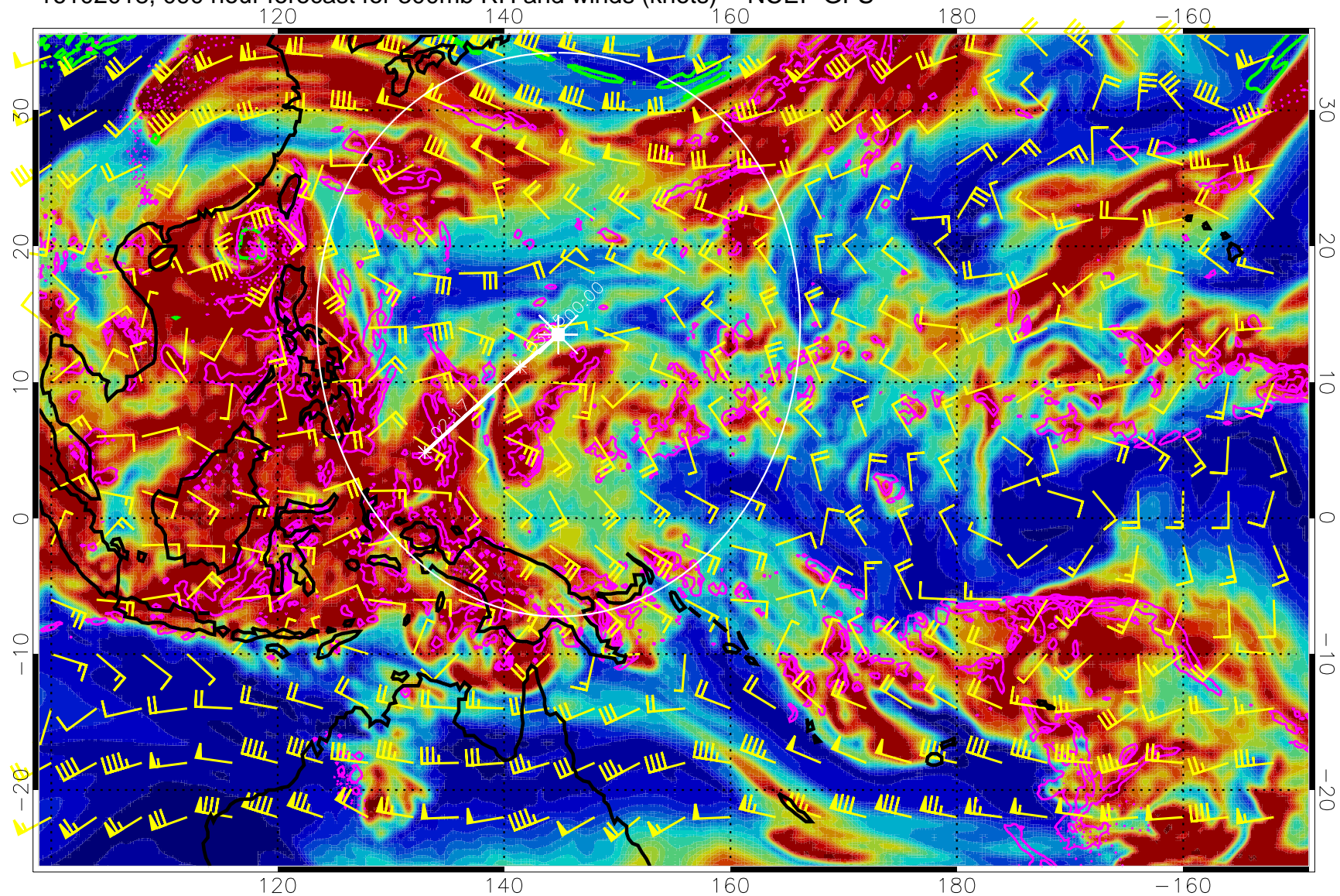
Precip (tot dot, conv sol) mm/day 40 mm/day contours, min 20

EPV Tropopause (2 PVU) Position

Range ring of 2304 km



16102018, 090 hour forecast for 300mb RH and winds (knots) -- NCEP GFS



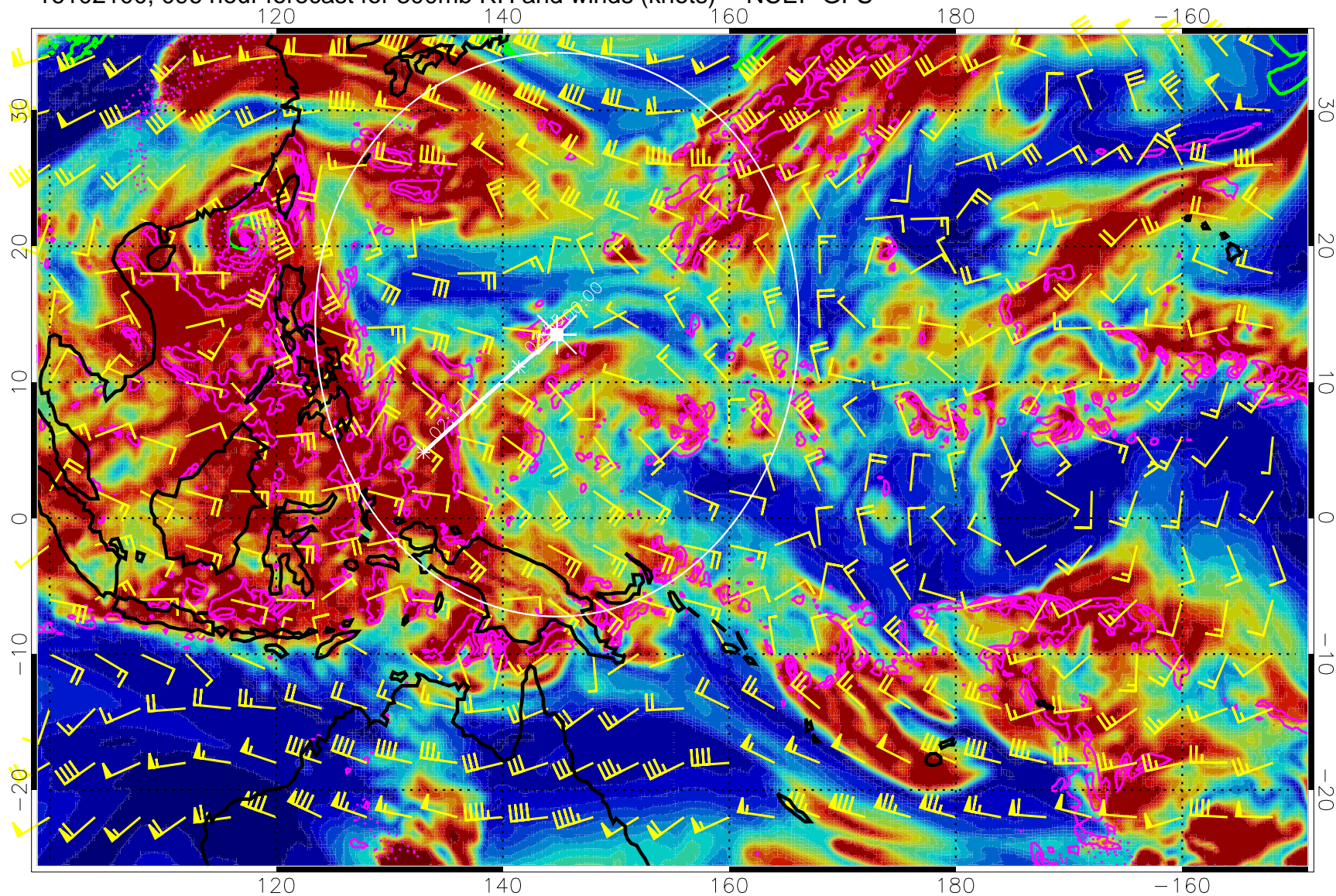
Precip (tot dot, conv sol) mm/day 40 mm/day contours, min 20

EPV Tropopause (2 PVU) Position

Range ring of 2304 km



16102100, 096 hour forecast for 300mb RH and winds (knots) -- NCEP GFS



Precip (tot dot, conv sol) mm/day 40 mm/day contours, min 20

EPV Tropopause (2 PVU) Position

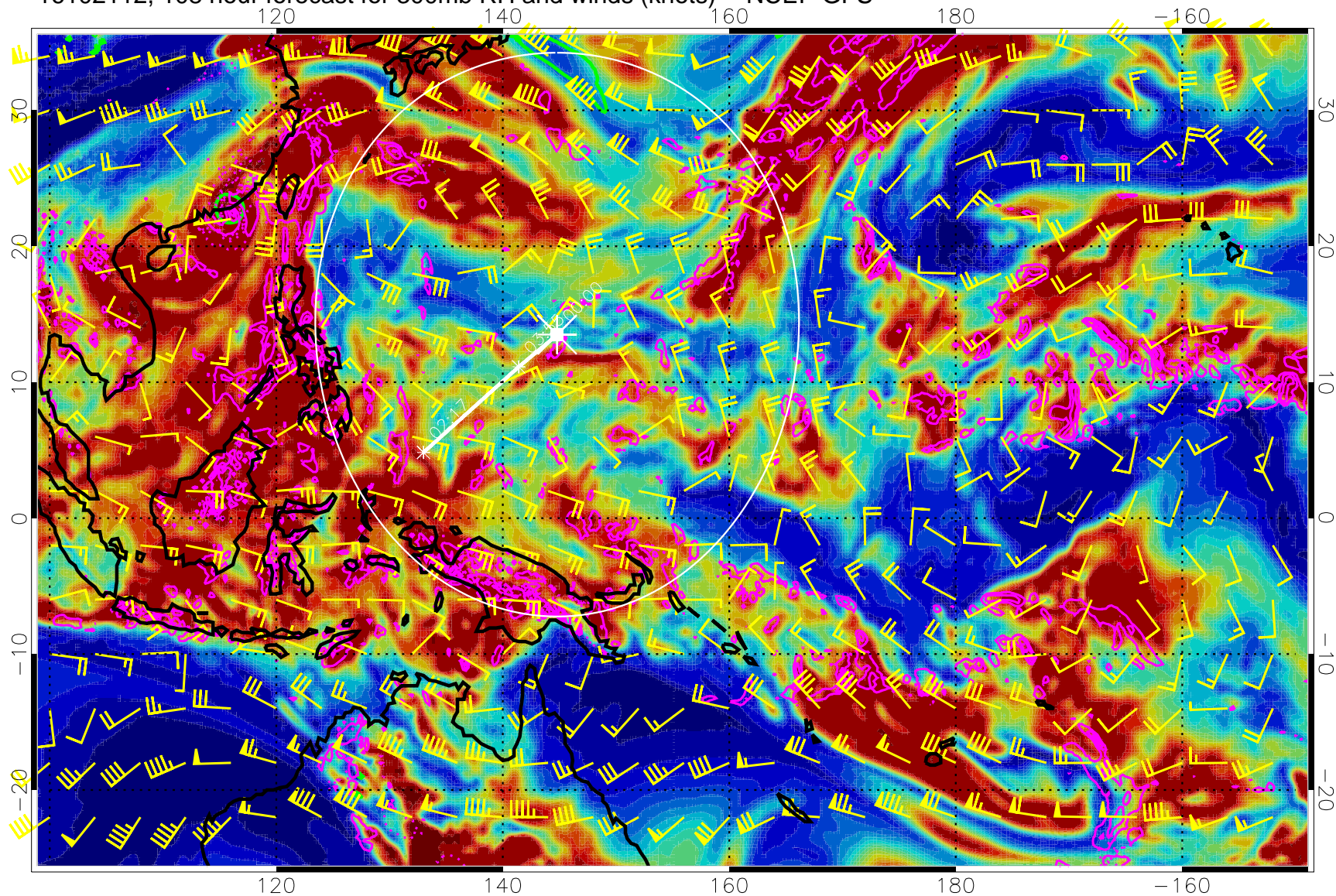
Range ring of 2304 km







16102112, 108 hour forecast for 300mb RH and winds (knots) -- NCEP GFS



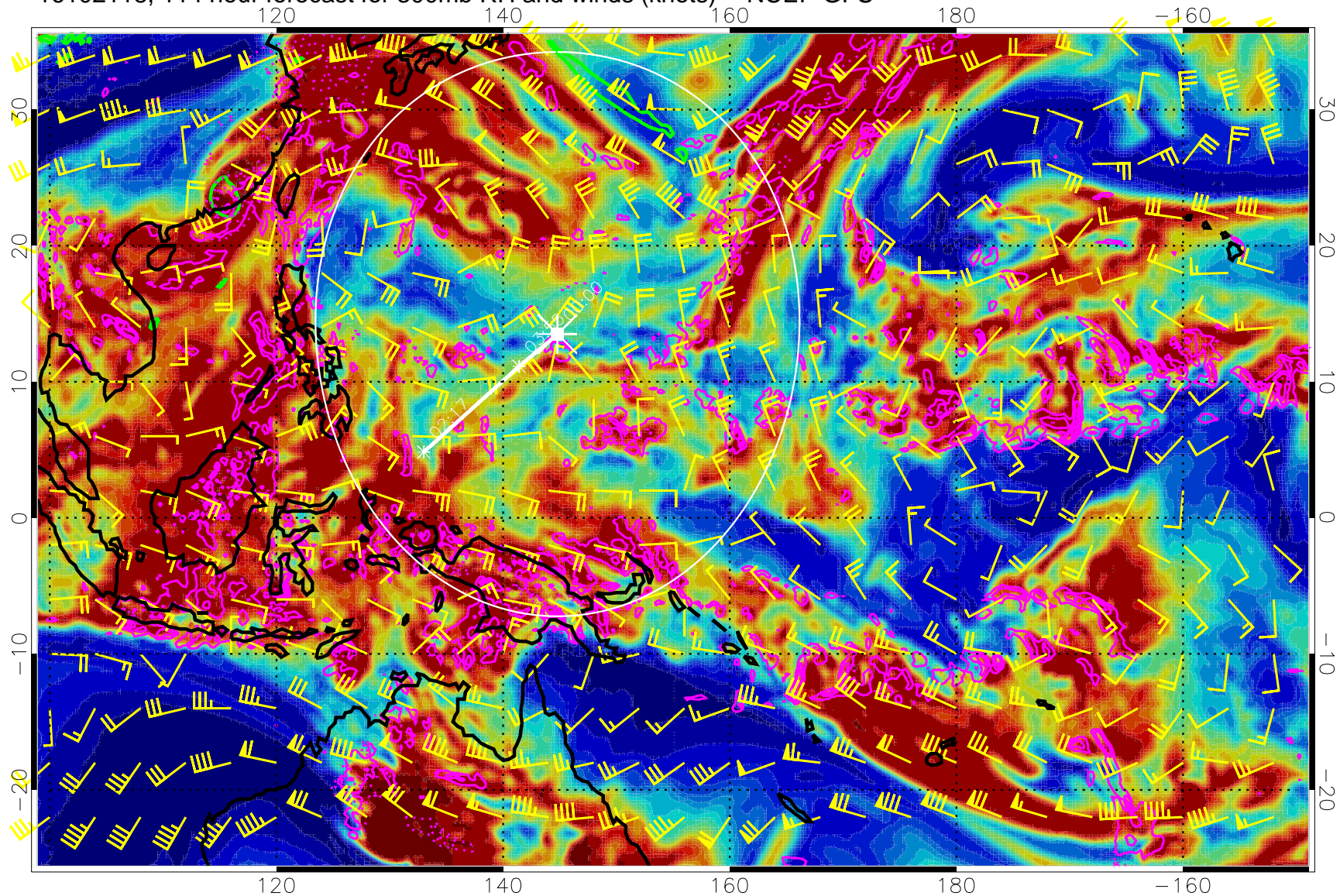
Precip (tot dot, conv sol) mm/day 40 mm/day contours, min 20

EPV Tropopause (2 PVU) Position

Range ring of 2304 km



16102118, 114 hour forecast for 300mb RH and winds (knots) -- NCEP GFS



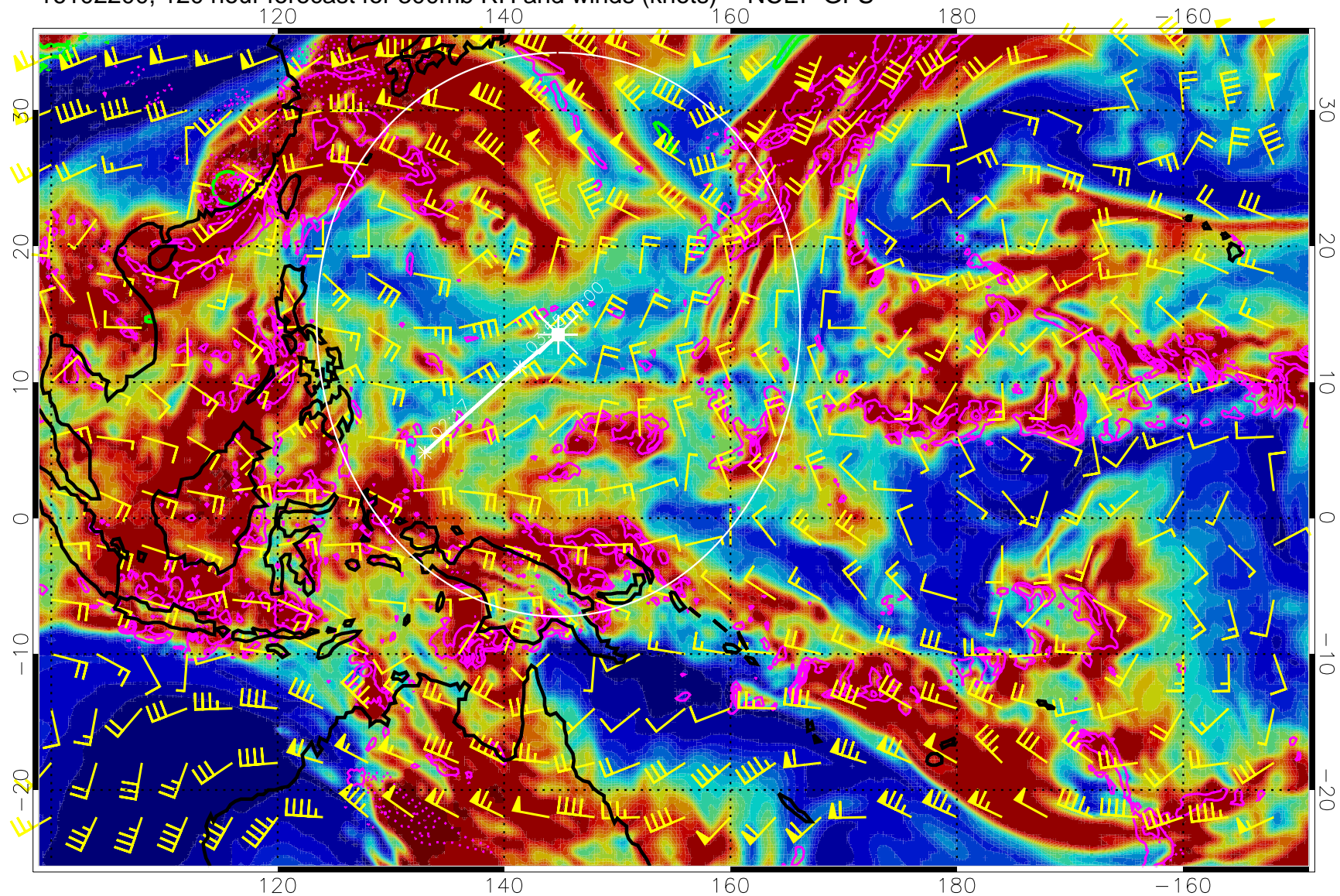
Precip (tot dot, conv sol) mm/day 40 mm/day contours, min 20

EPV Tropopause (2 PVU) Position

Range ring of 2304 km



16102200, 120 hour forecast for 300mb RH and winds (knots) -- NCEP GFS



Precip (tot dot, conv sol) mm/day 40 mm/day contours, min 20

EPV Tropopause (2 PVU) Position

Range ring of 2304 km