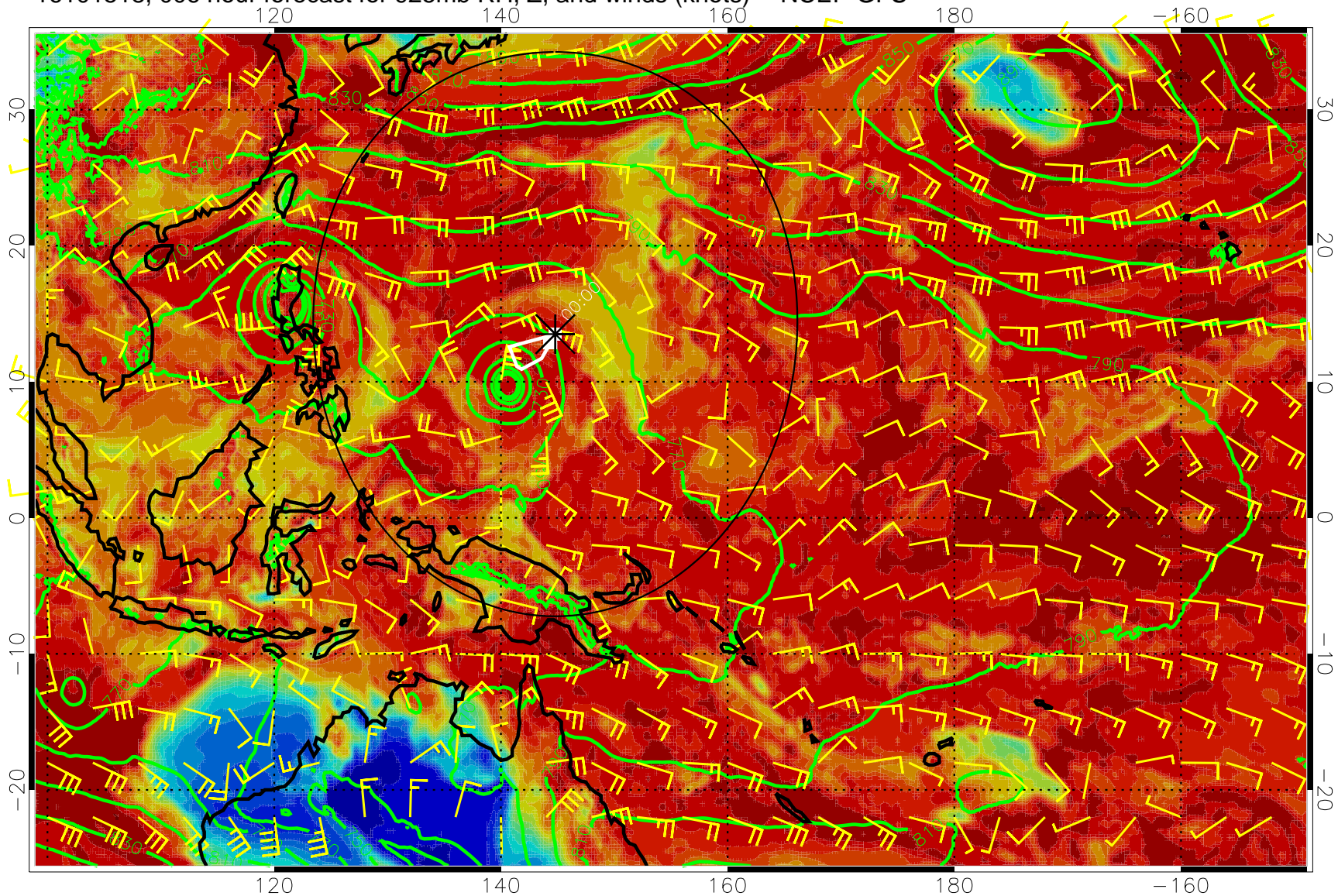
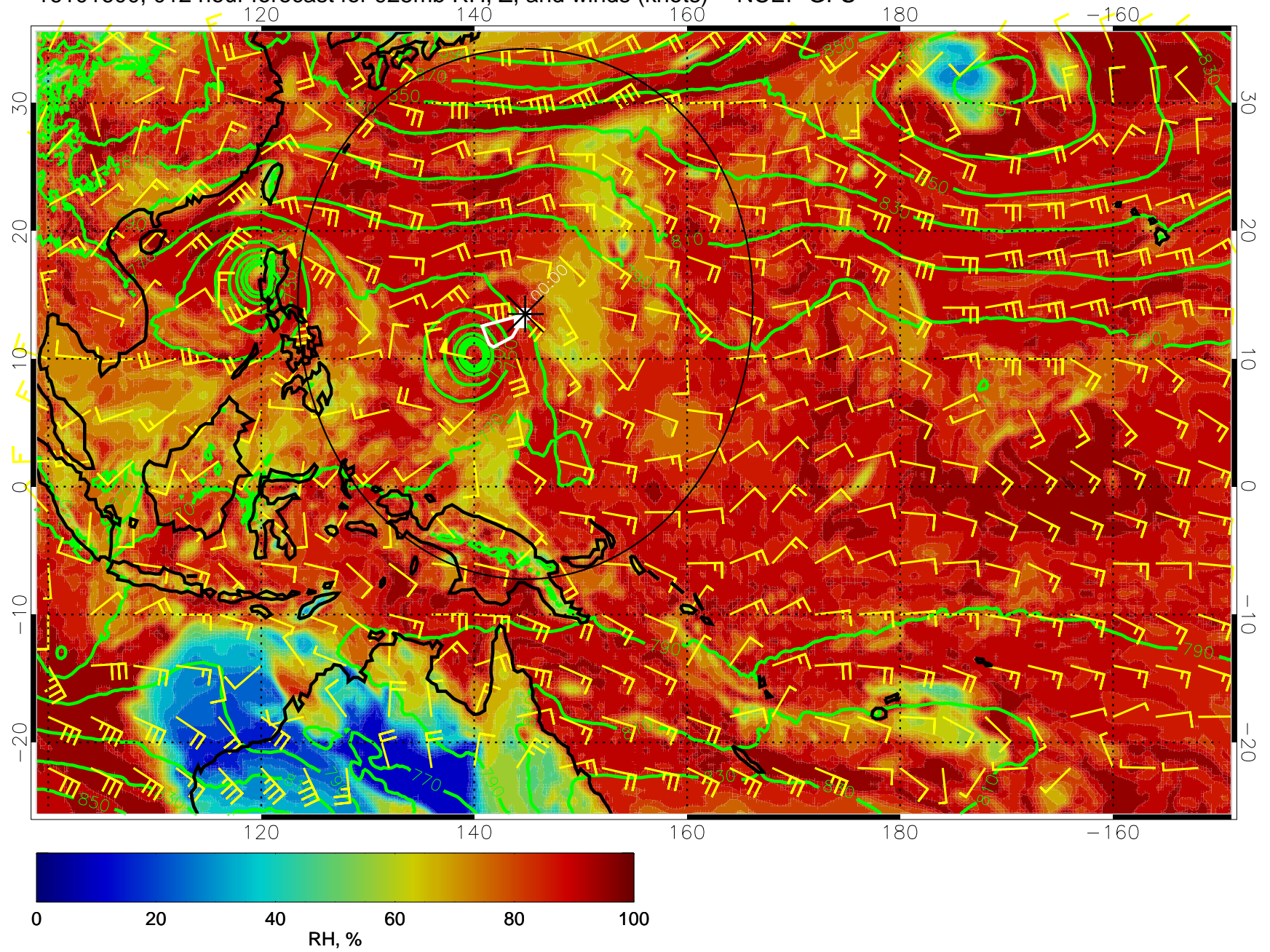


16101518, 006 hour forecast for 925mb RH, Z, and winds (knots) -- NCEP GFS

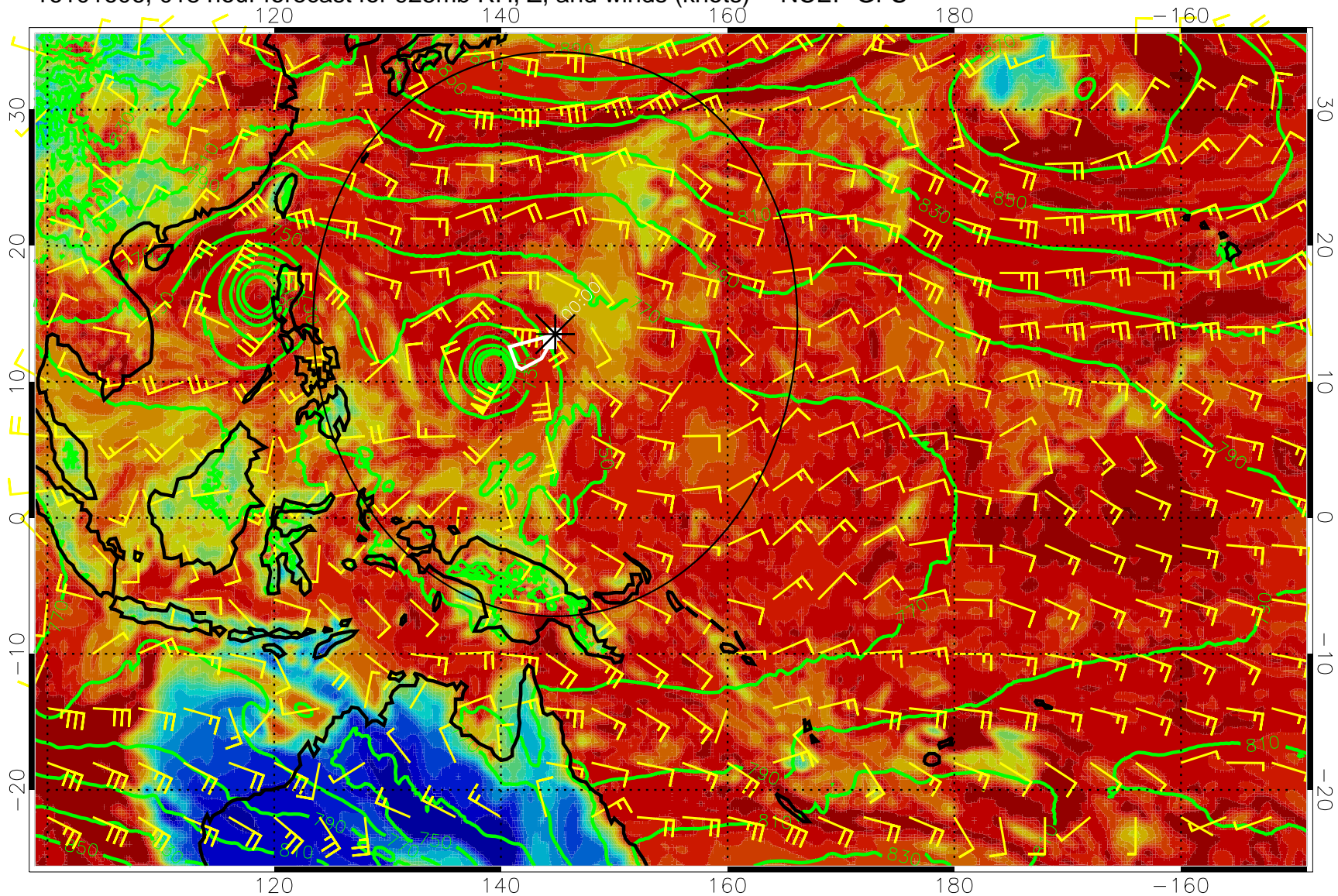


16101600, 012 hour forecast for 925mb RH, Z, and winds (knots) -- NCEP GFS



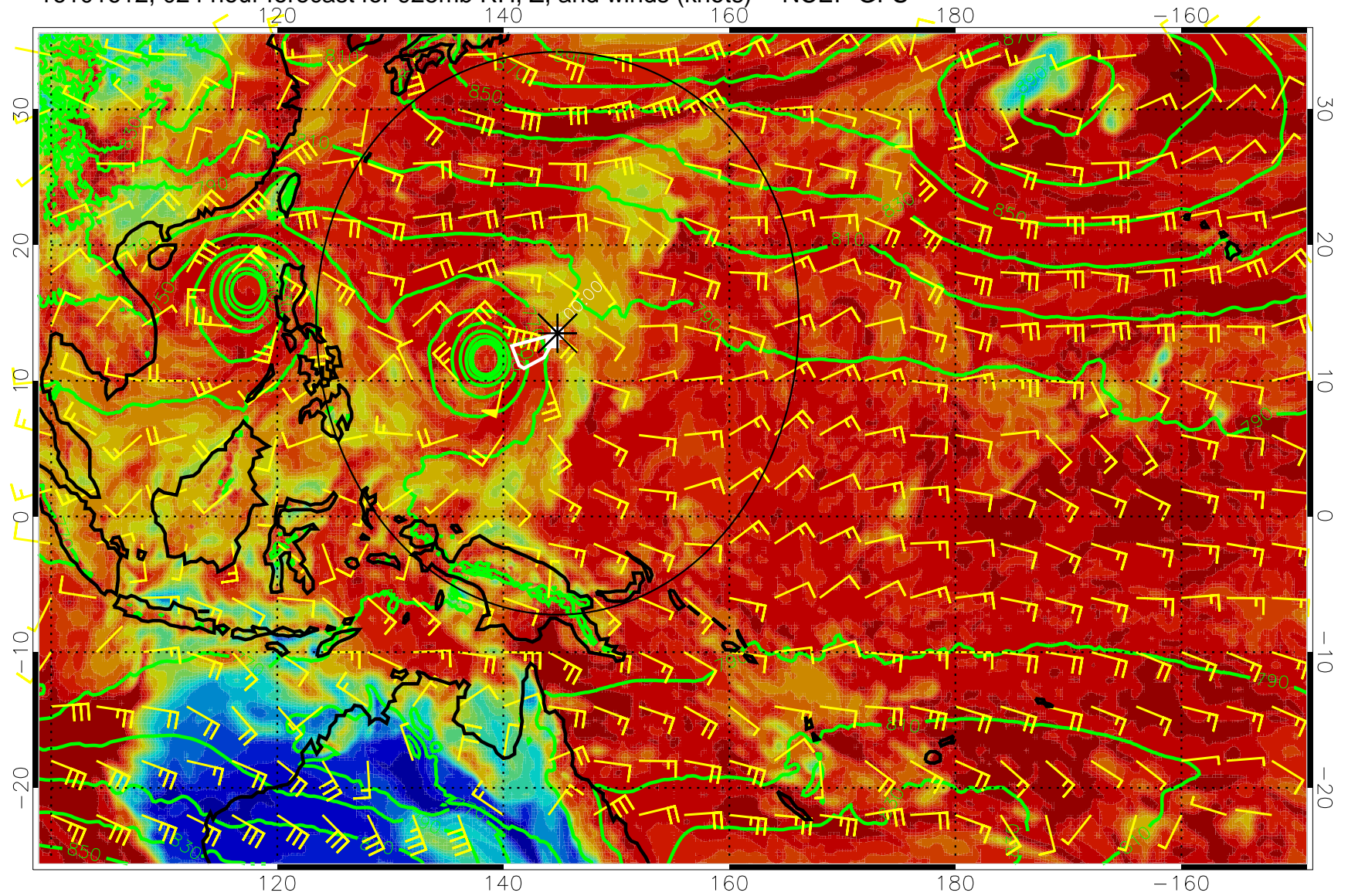


16101606, 018 hour forecast for 925mb RH, Z, and winds (knots) -- NCEP GFS



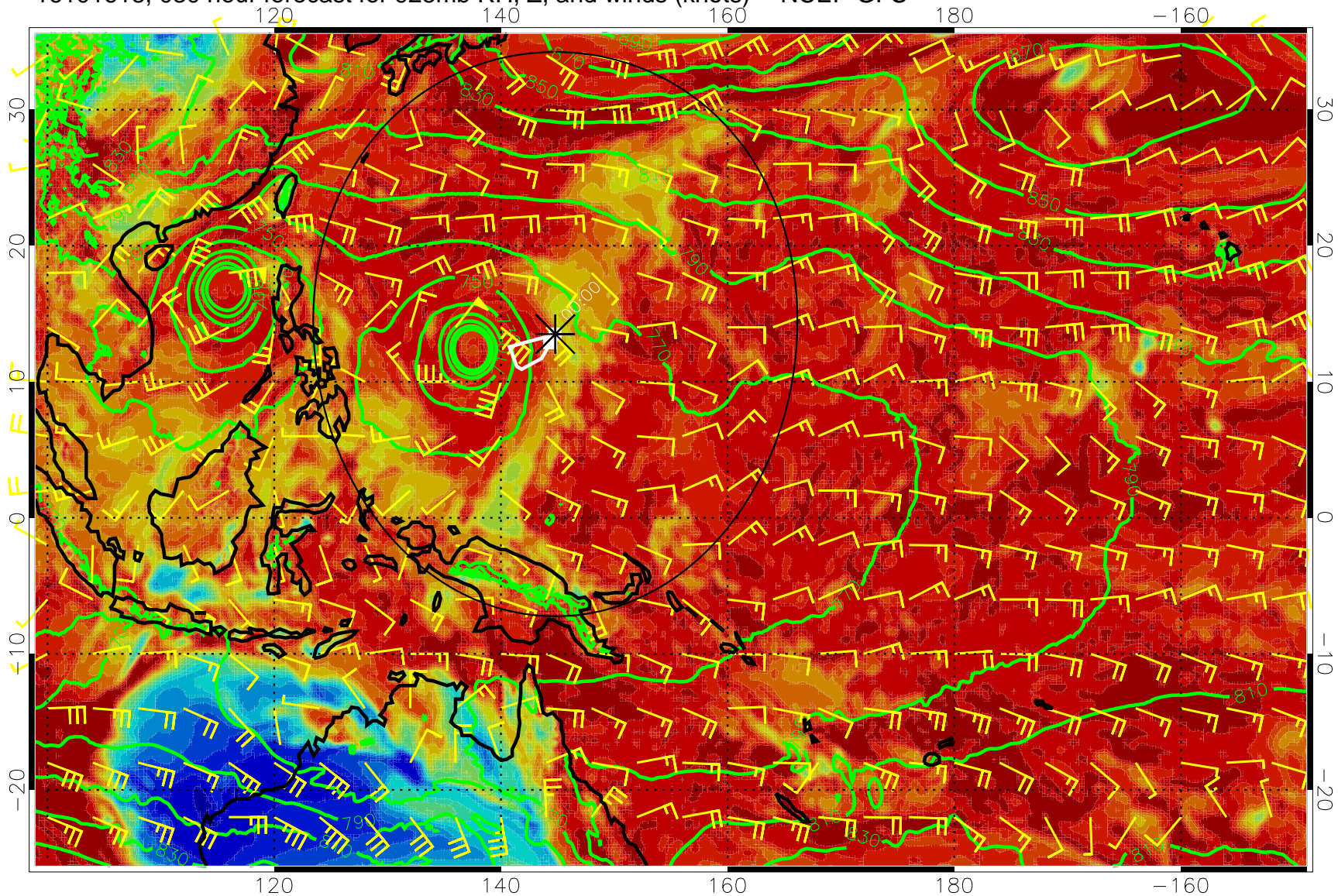


16101612, 024 hour forecast for 925mb RH, Z, and winds (knots) -- NCEP GFS



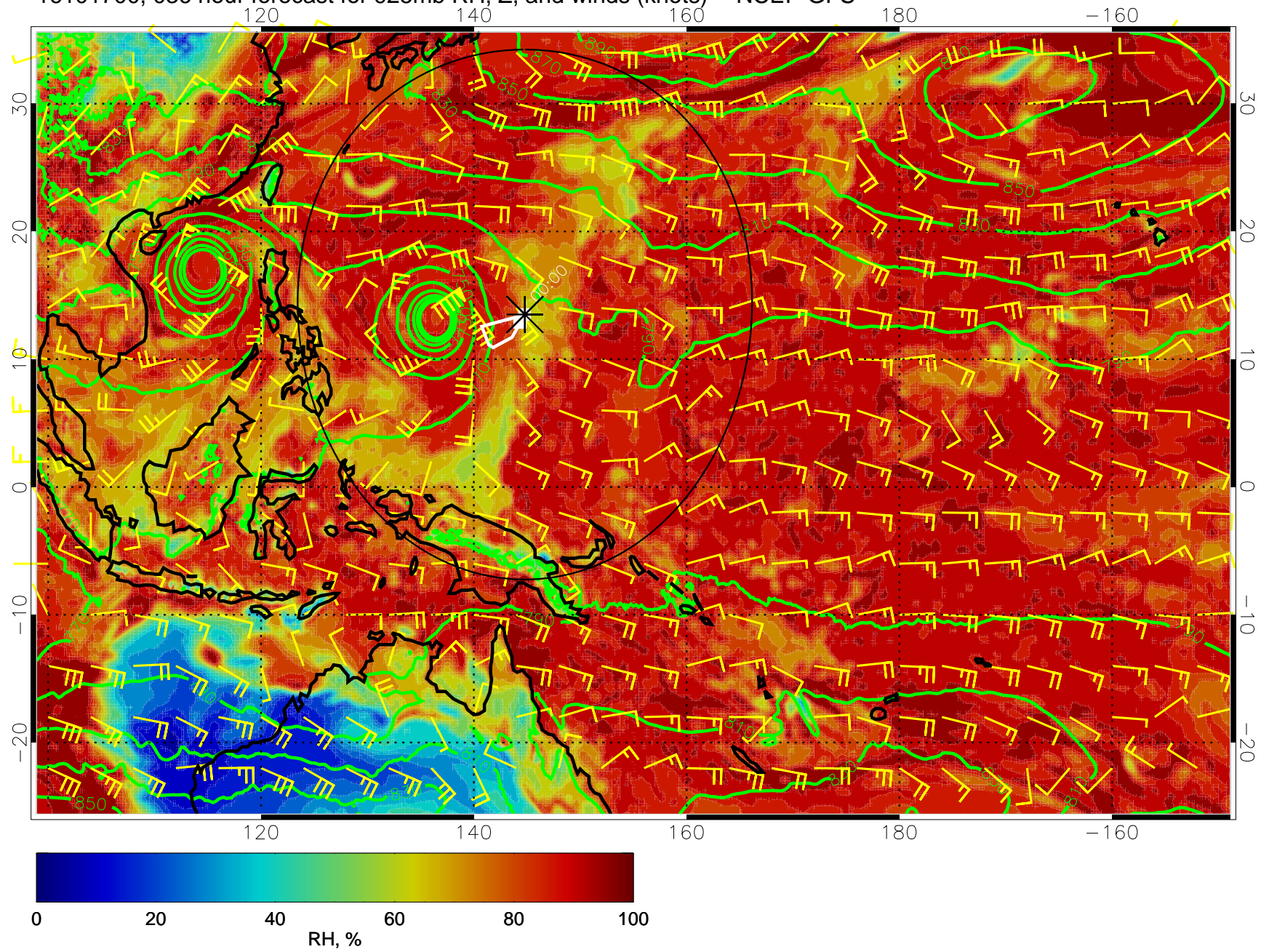


16101618, 030 hour forecast for 925mb RH, Z, and winds (knots) -- NCEP GFS



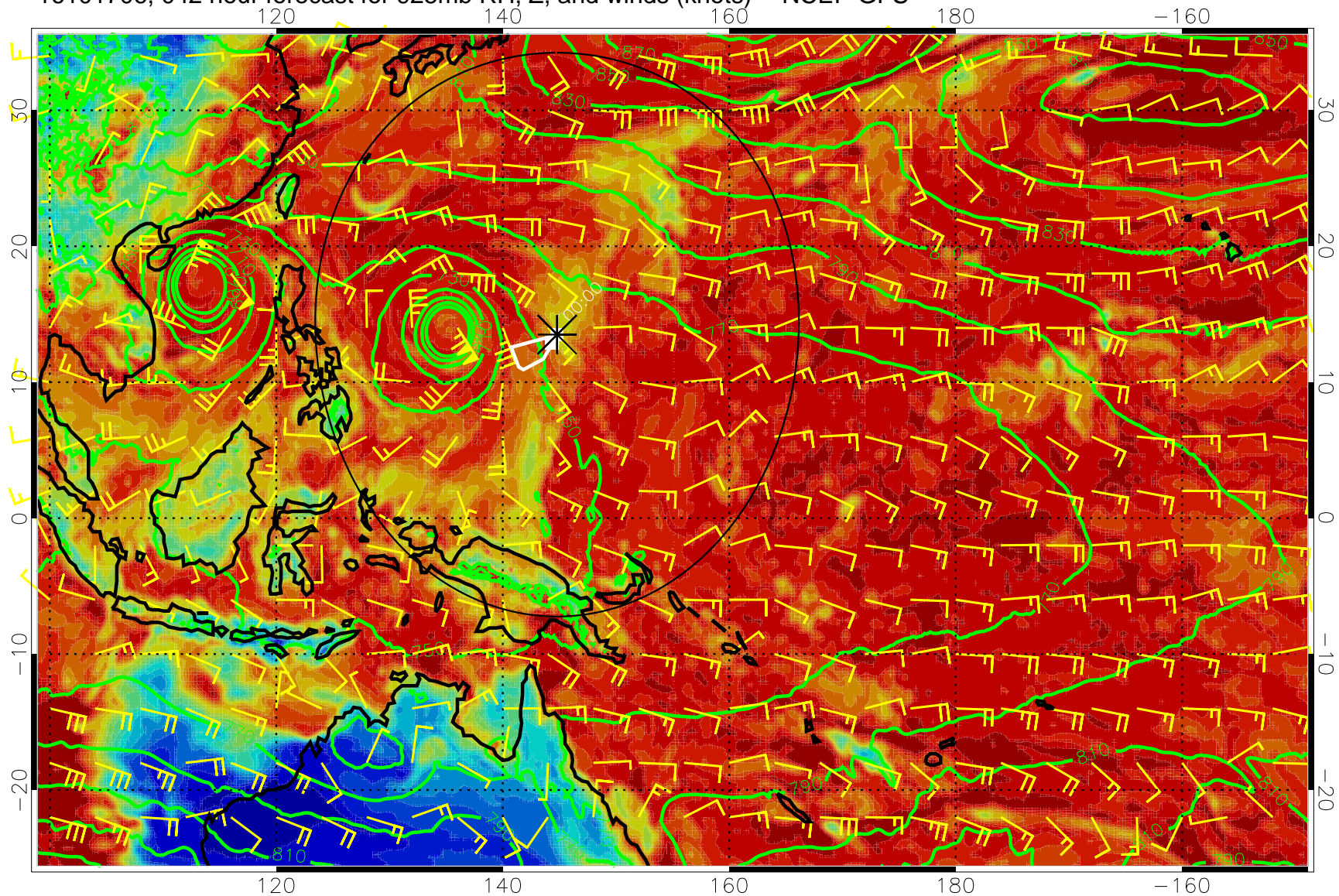


16101700, 036 hour forecast for 925mb RH, Z, and winds (knots) -- NCEP GFS



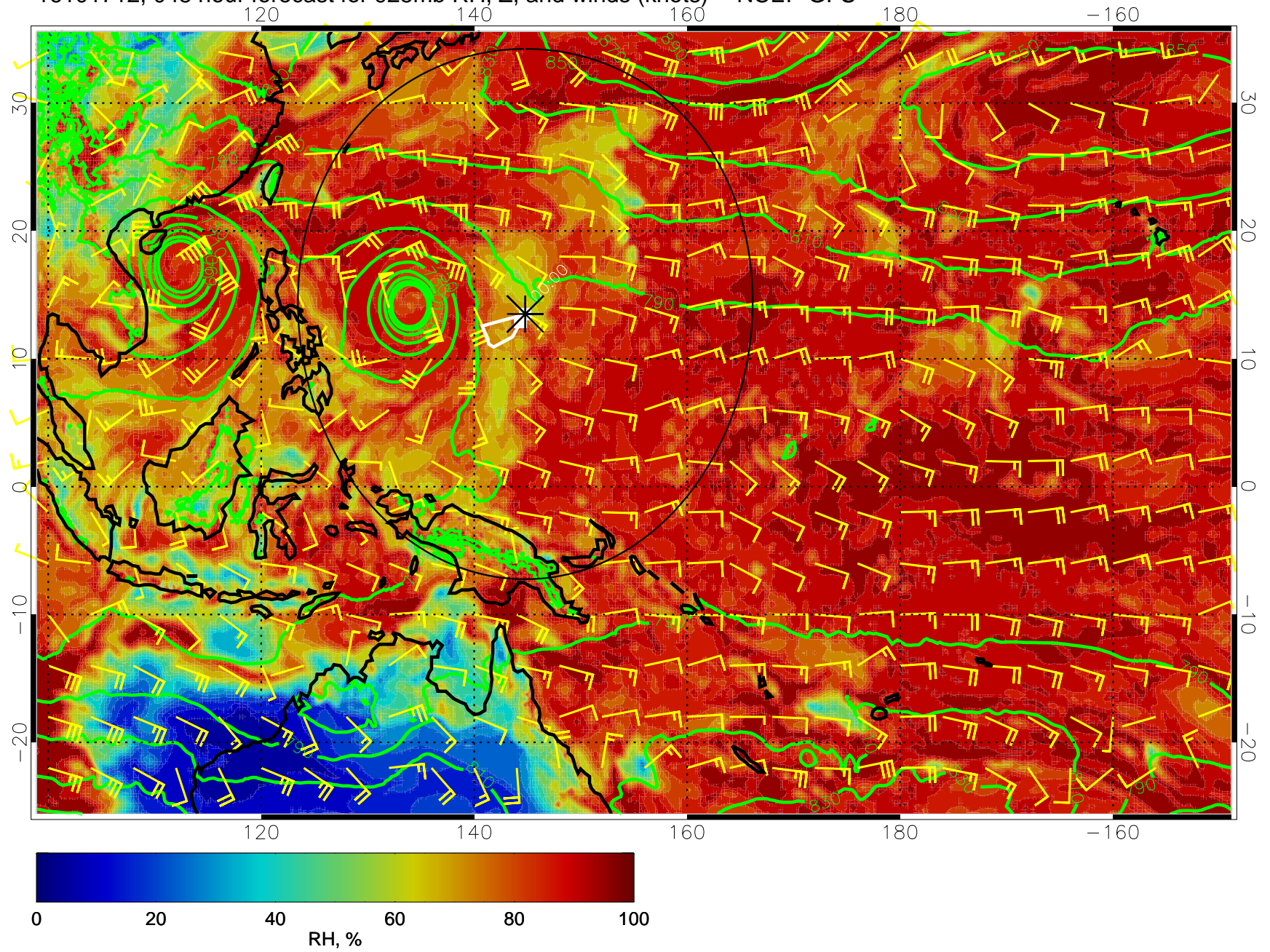


16101706, 042 hour forecast for 925mb RH, Z, and winds (knots) -- NCEP GFS



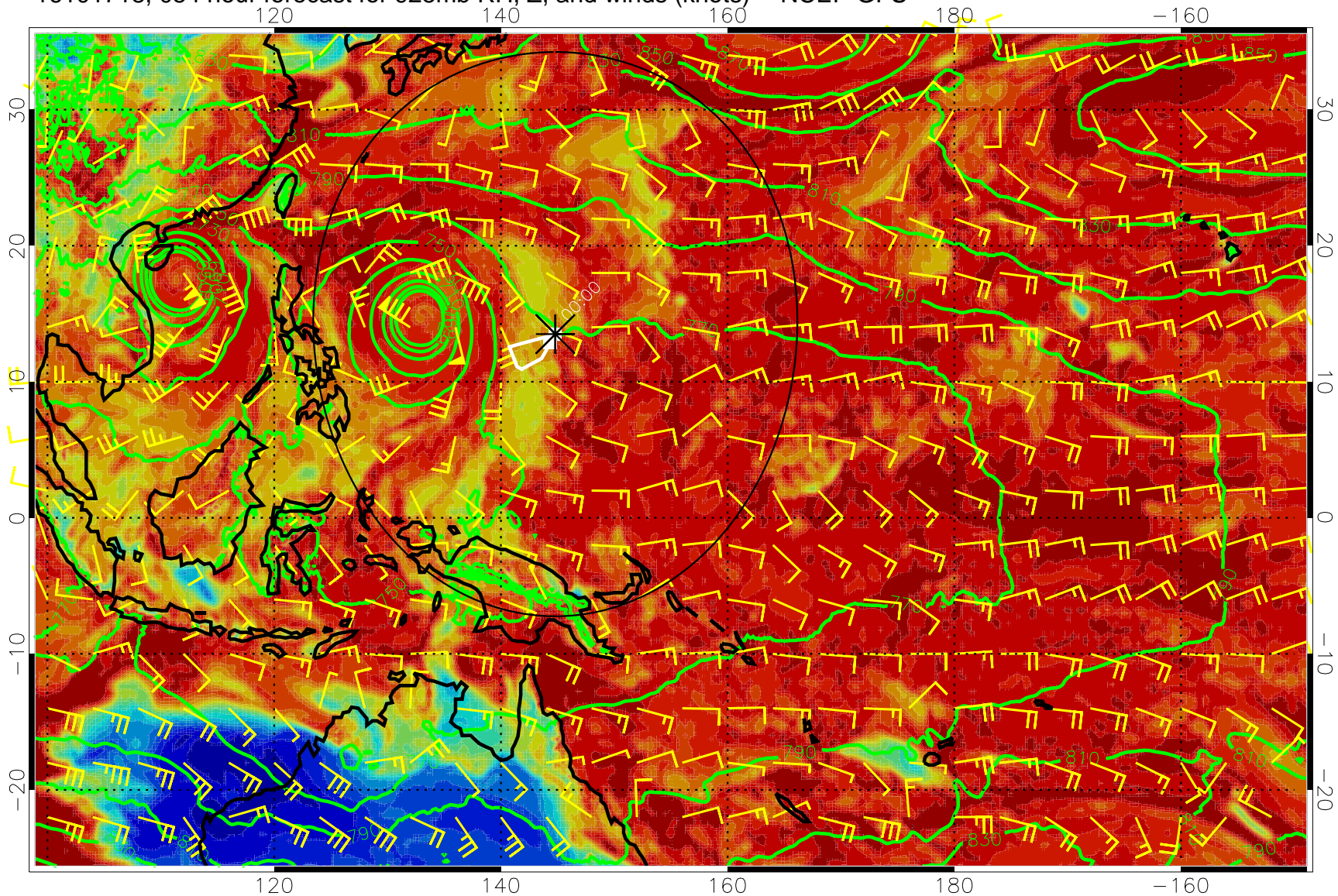


16101712, 048 hour forecast for 925mb RH, Z, and winds (knots) -- NCEP GFS



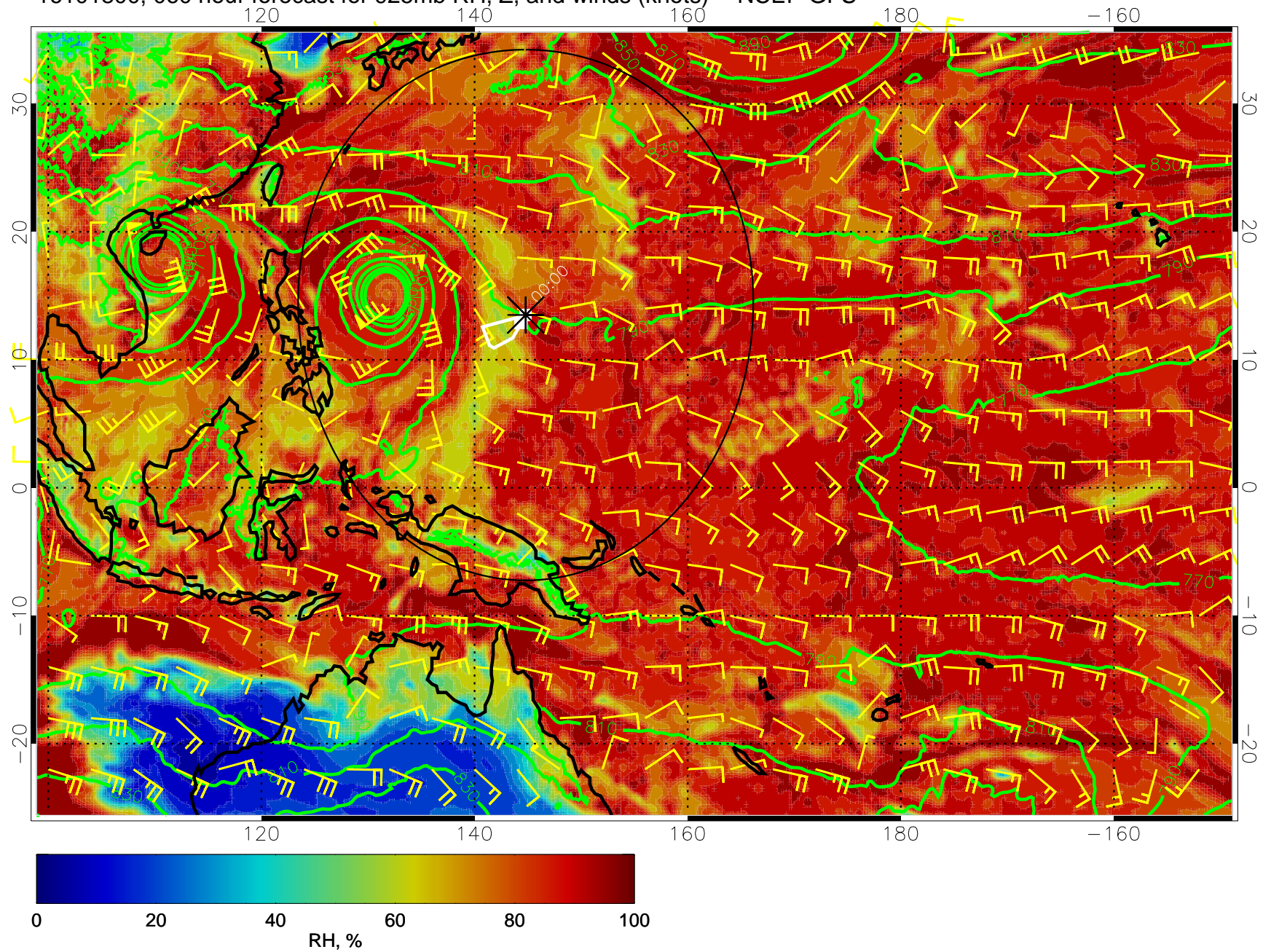


16101718, 054 hour forecast for 925mb RH, Z, and winds (knots) -- NCEP GFS



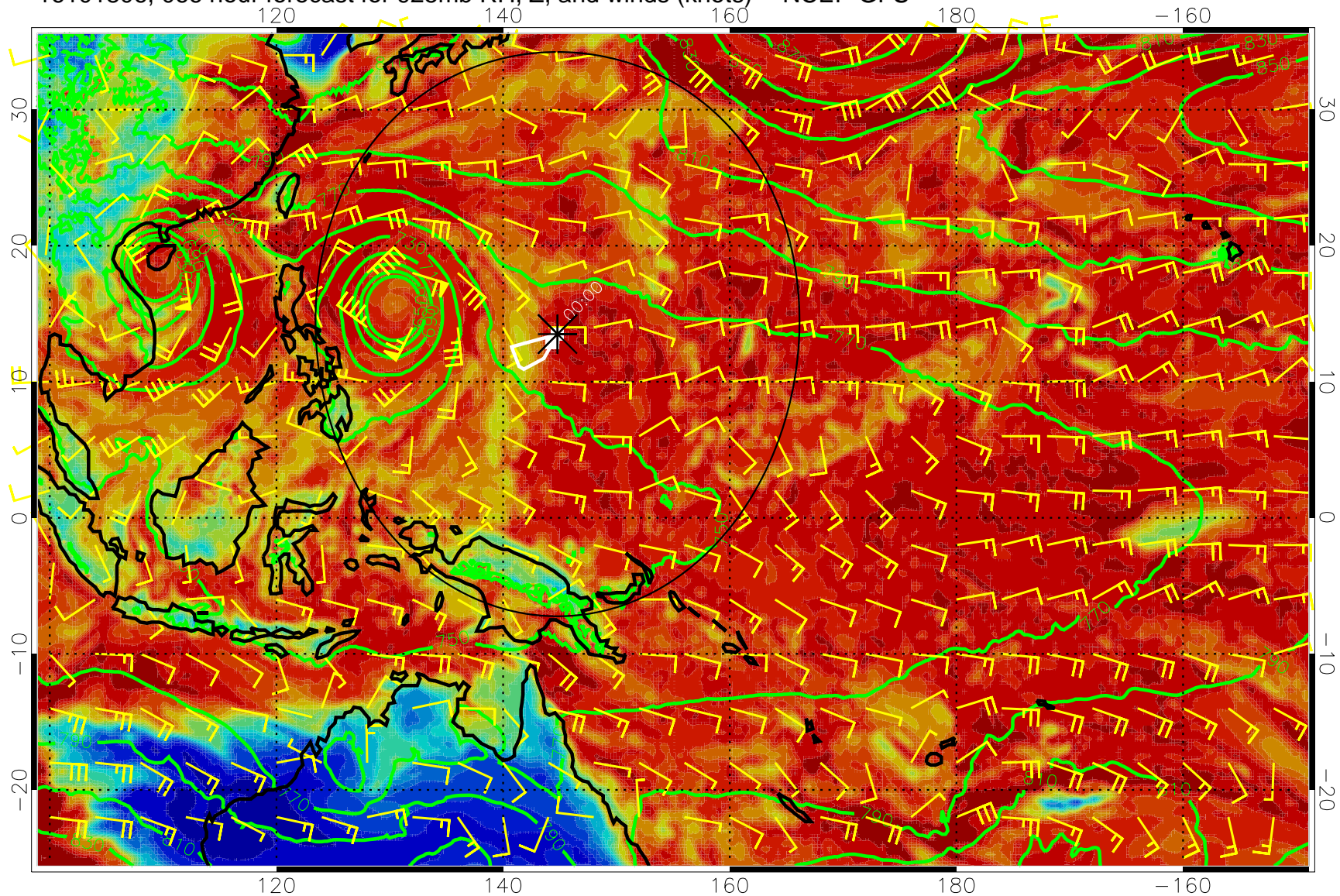


16101800, 060 hour forecast for 925mb RH, Z, and winds (knots) -- NCEP GFS



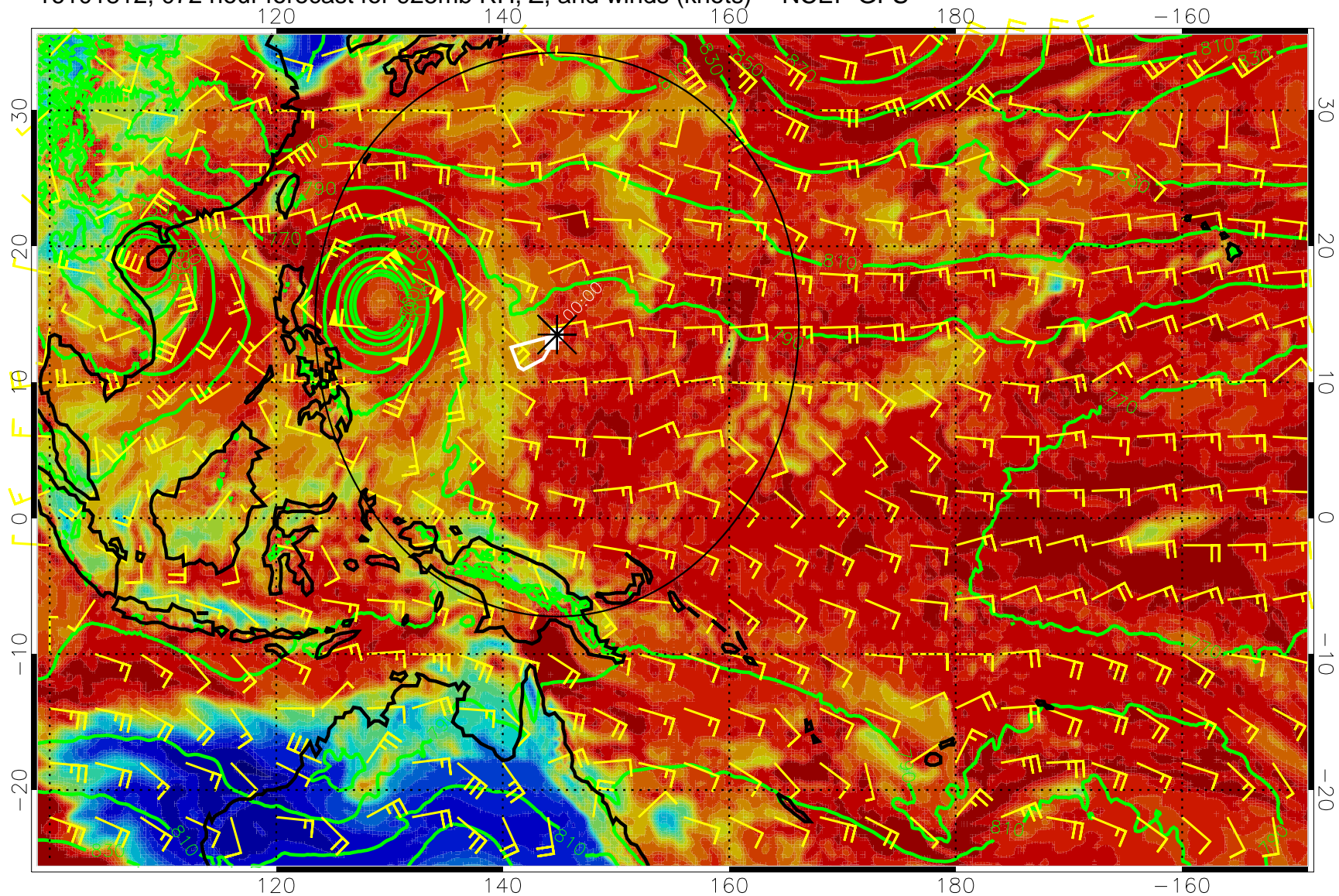


16101806, 066 hour forecast for 925mb RH, Z, and winds (knots) -- NCEP GFS



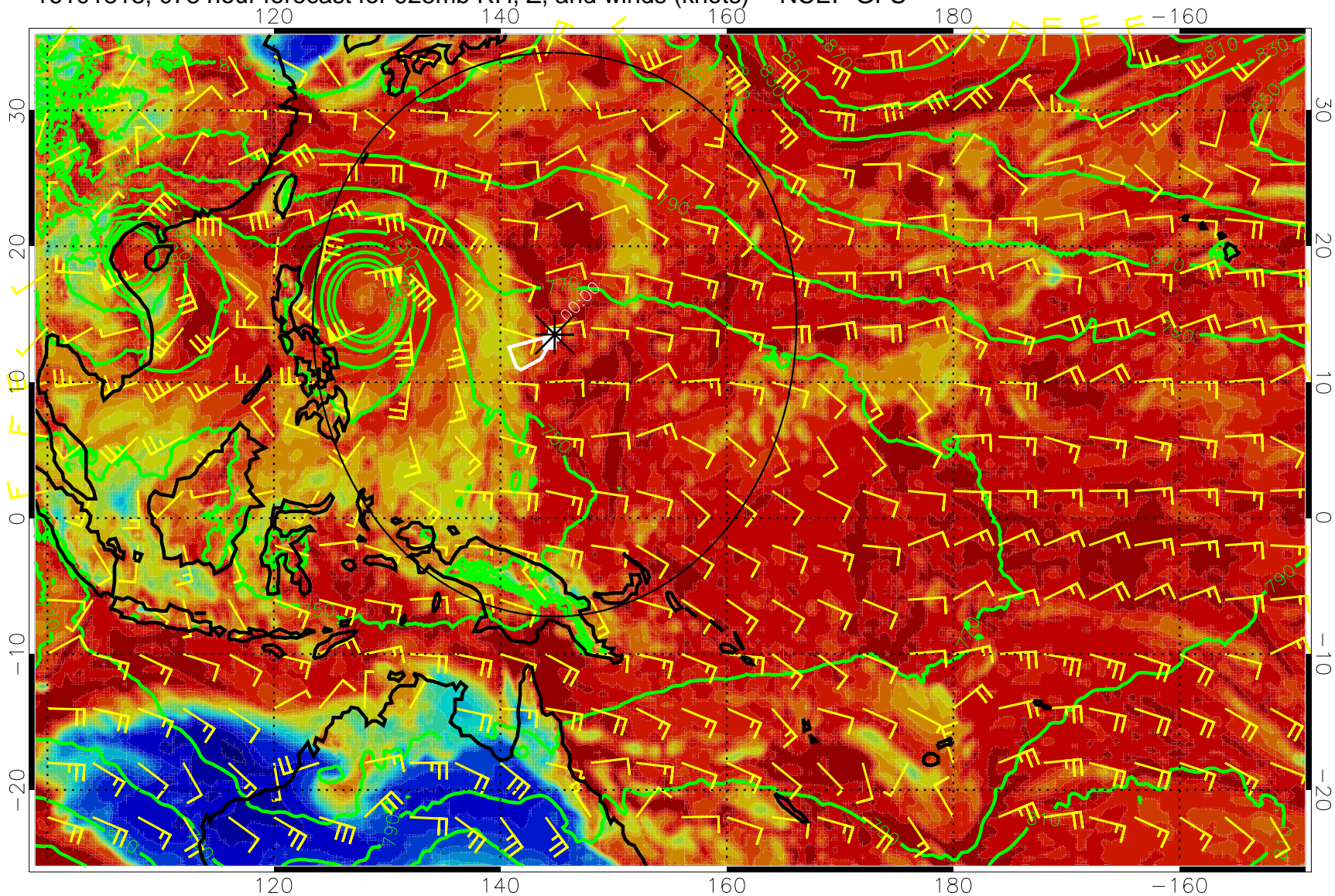


16101812, 072 hour forecast for 925mb RH, Z, and winds (knots) -- NCEP GFS



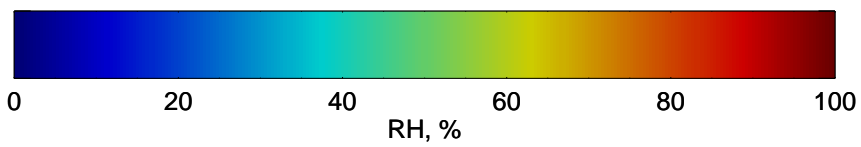
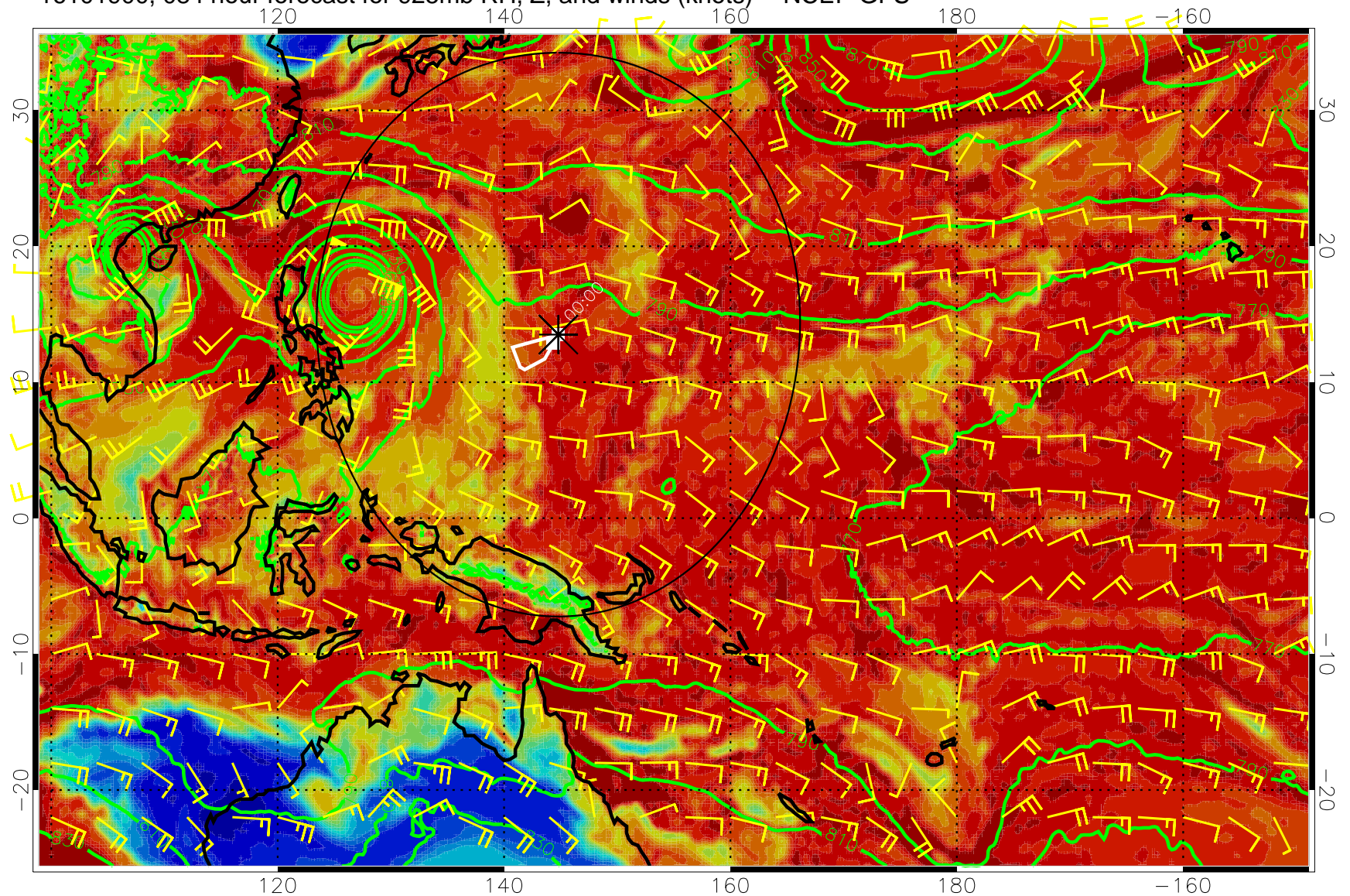


16101818, 078 hour forecast for 925mb RH, Z, and winds (knots) -- NCEP GFS



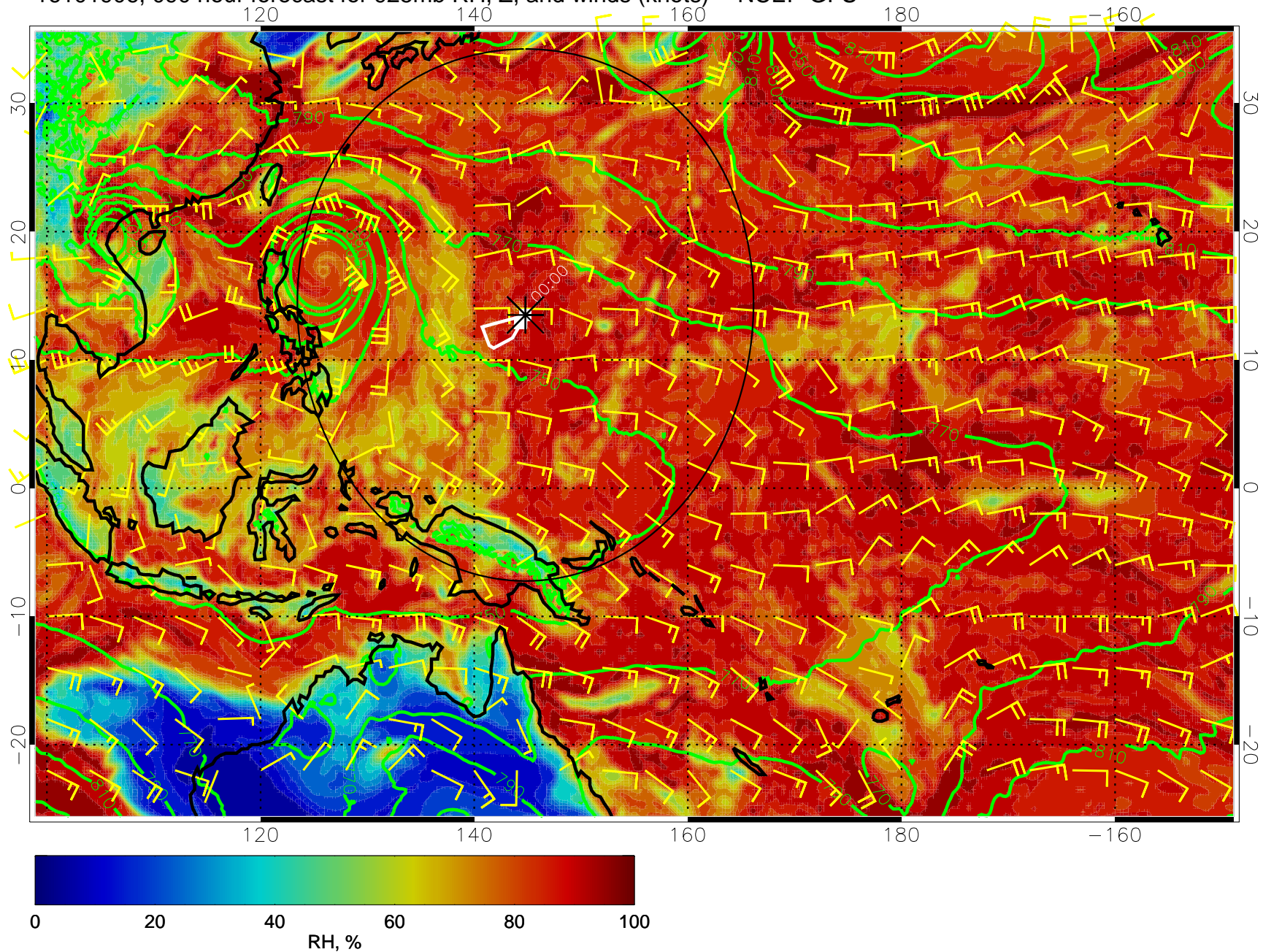


16101900, 084 hour forecast for 925mb RH, Z, and winds (knots) -- NCEP GFS



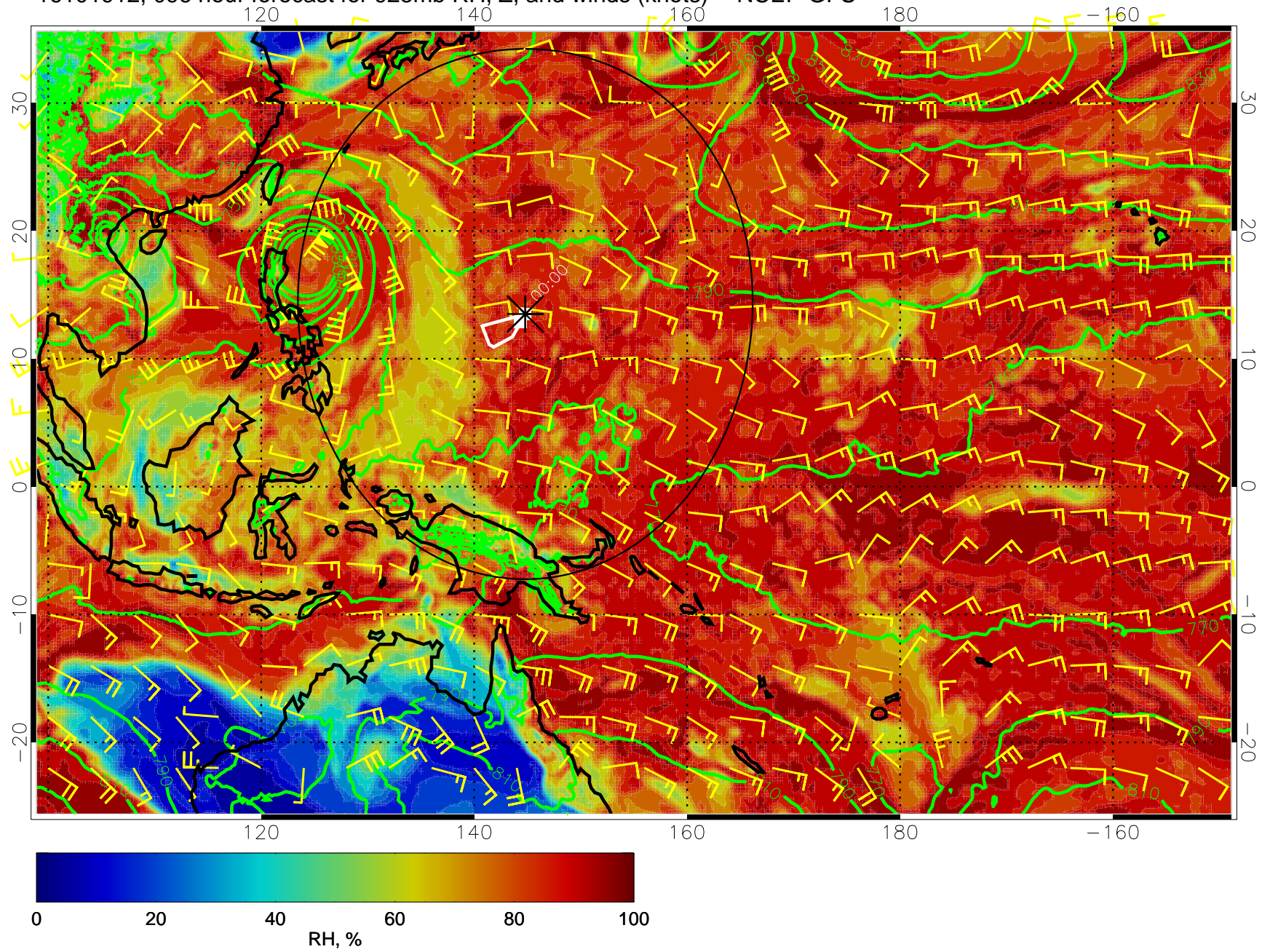


16101906, 090 hour forecast for 925mb RH, Z, and winds (knots) -- NCEP GFS





16101912, 096 hour forecast for 925mb RH, Z, and winds (knots) -- NCEP GFS

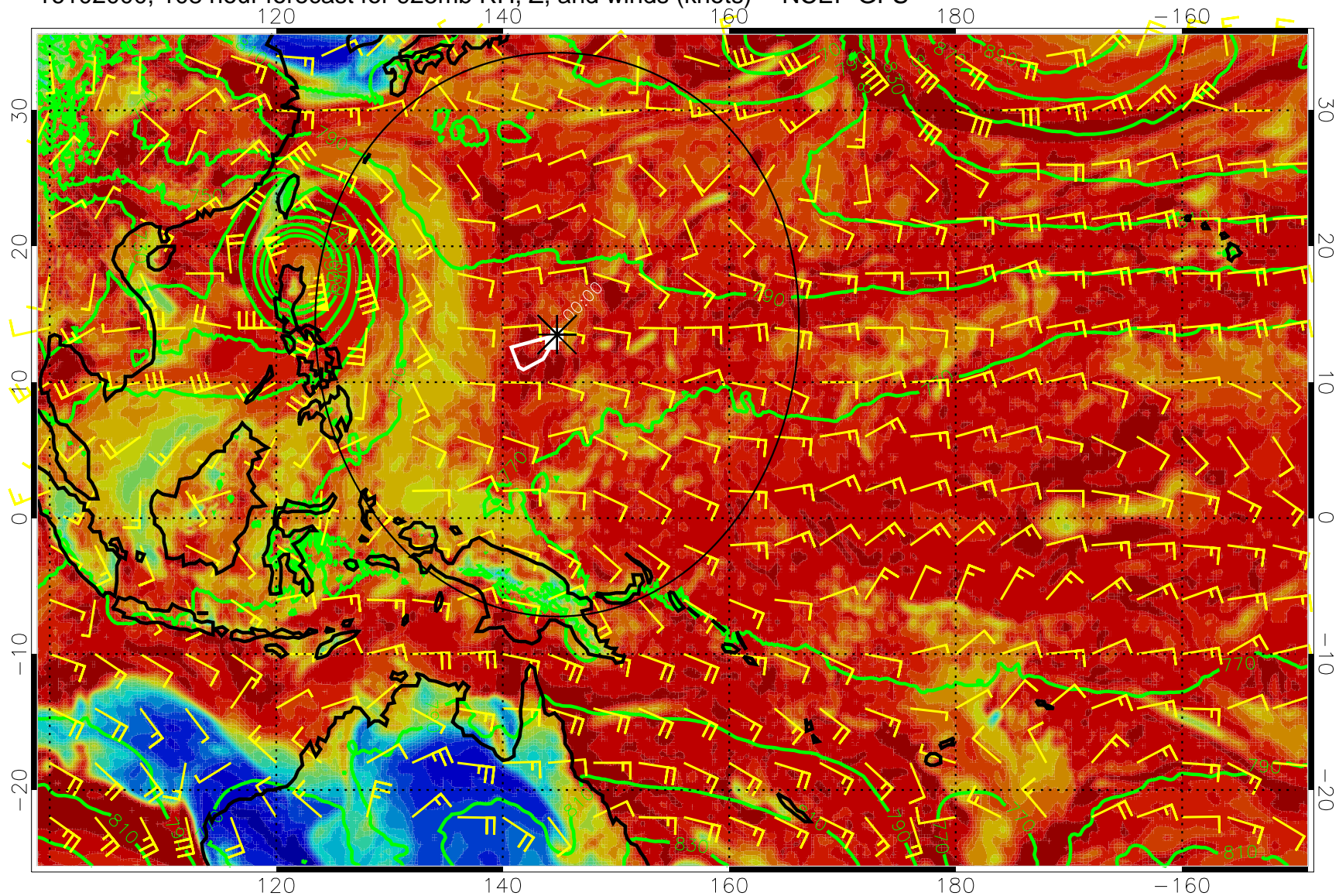






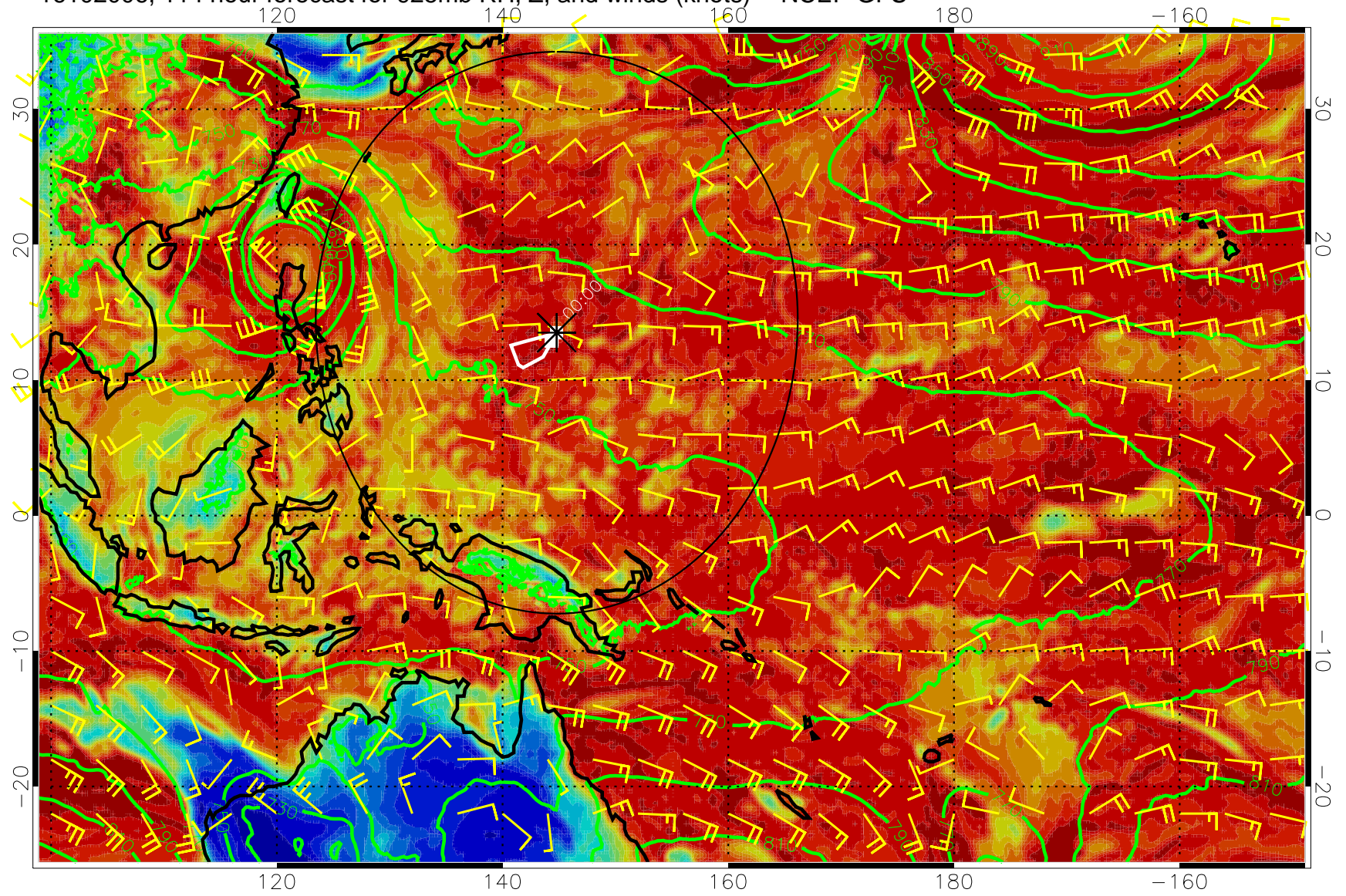


16102000, 108 hour forecast for 925mb RH, Z, and winds (knots) -- NCEP GFS





16102006, 114 hour forecast for 925mb RH, Z, and winds (knots) -- NCEP GFS





16102012, 120 hour forecast for 925mb RH, Z, and winds (knots) -- NCEP GFS

