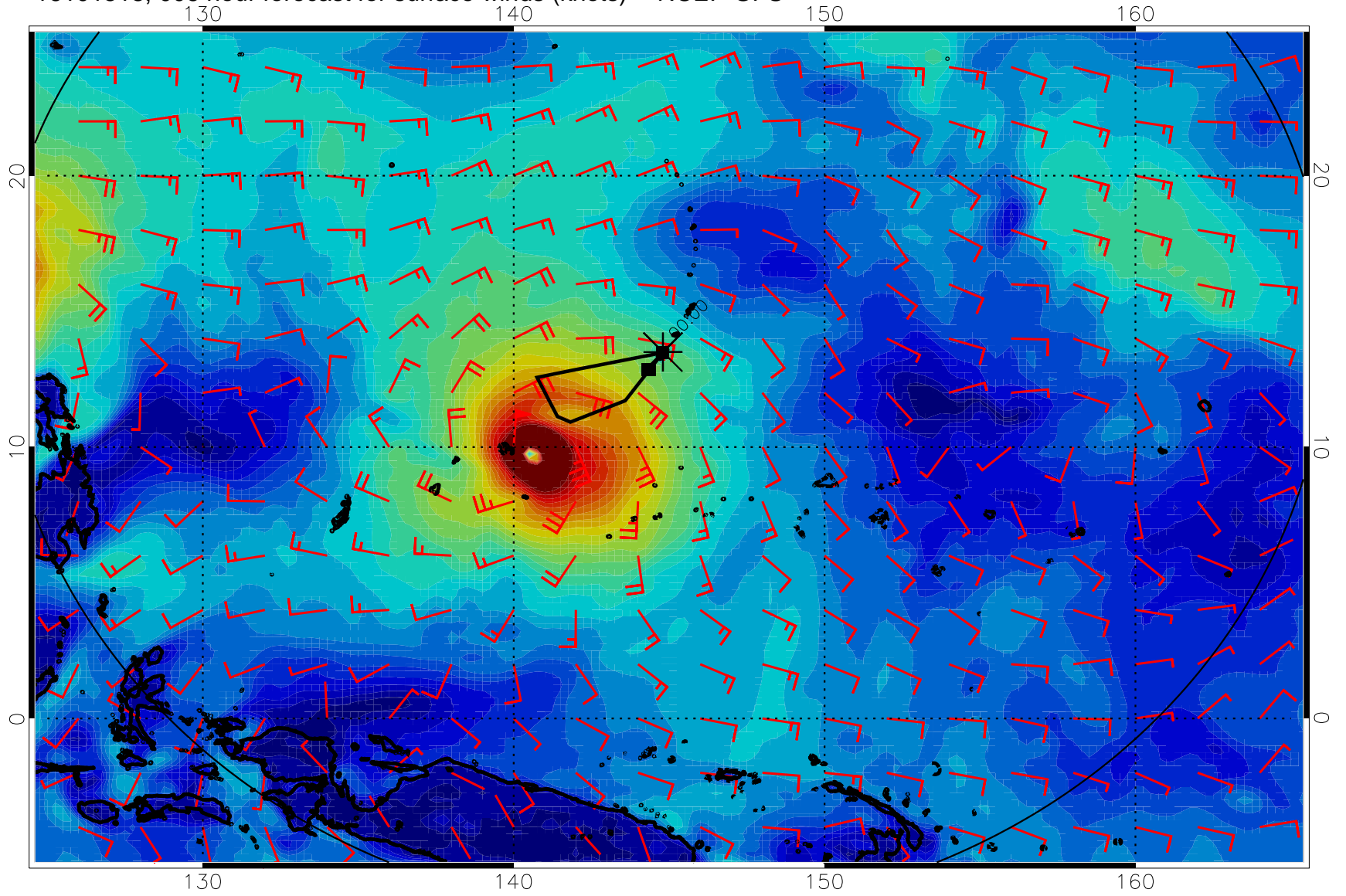
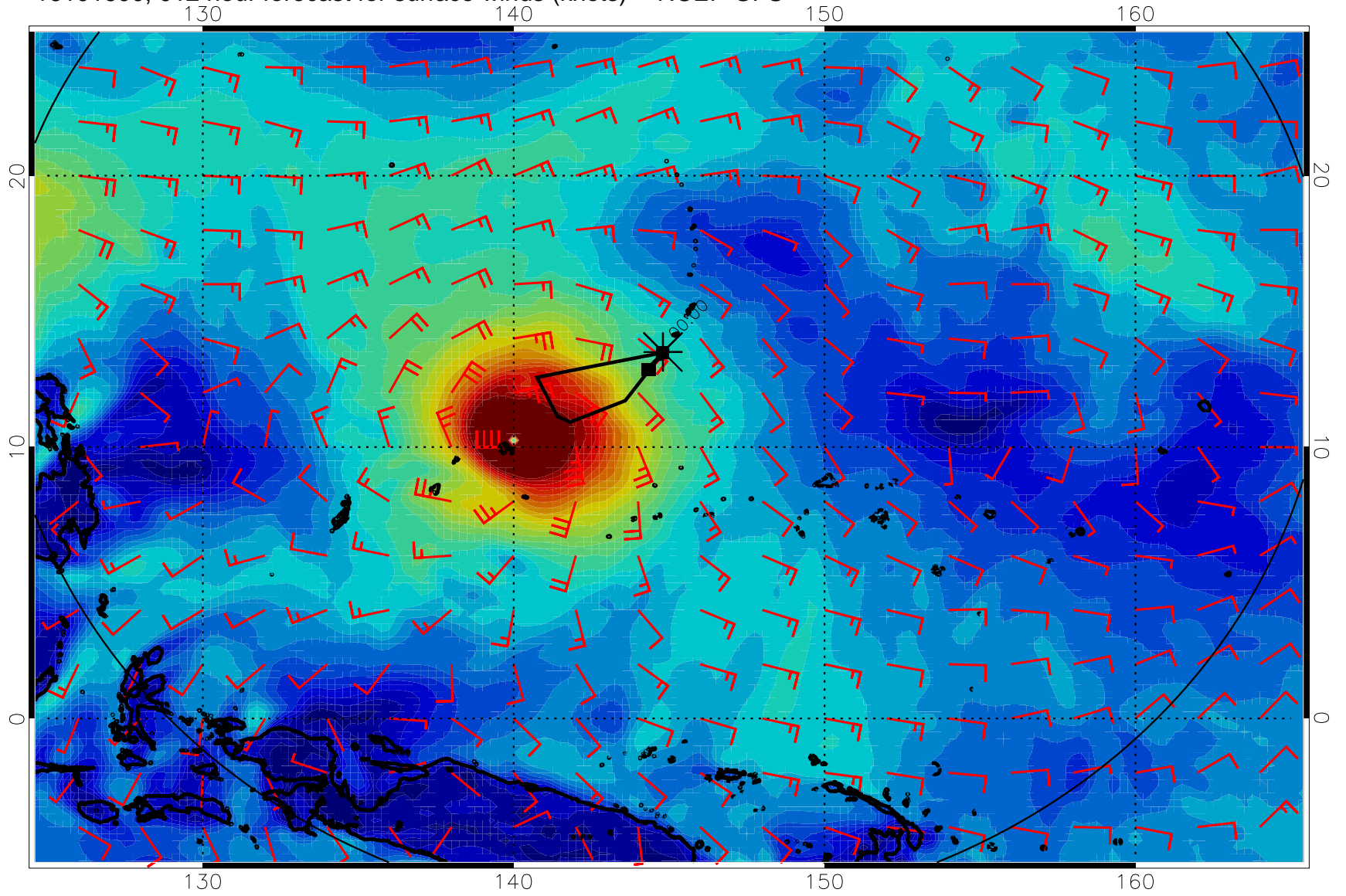


16101518, 006 hour forecast for surface winds (knots) -- NCEP GFS



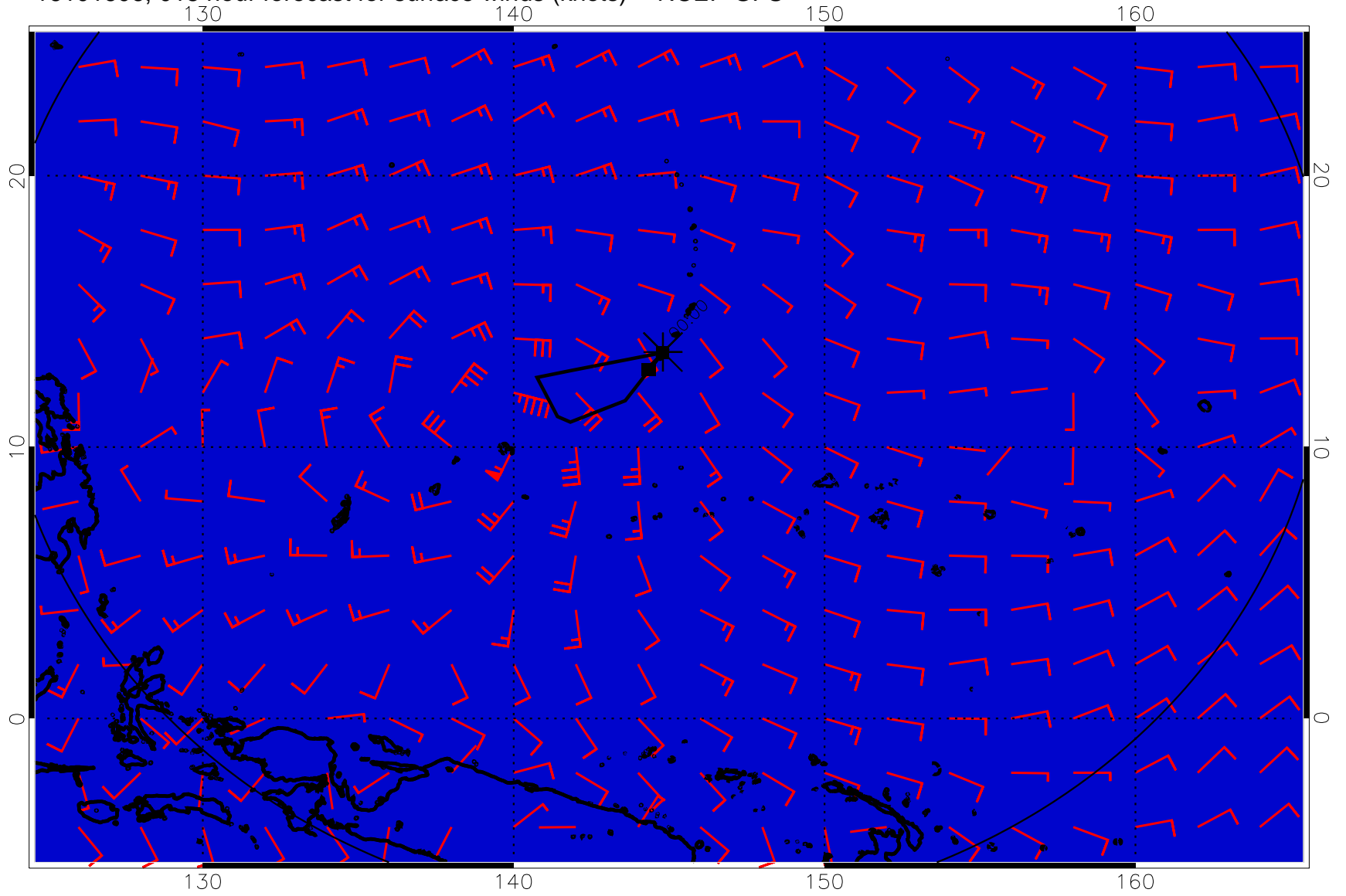
0 10 20 30
Surface Wind Speed, knots

16101600, 012 hour forecast for surface winds (knots) -- NCEP GFS



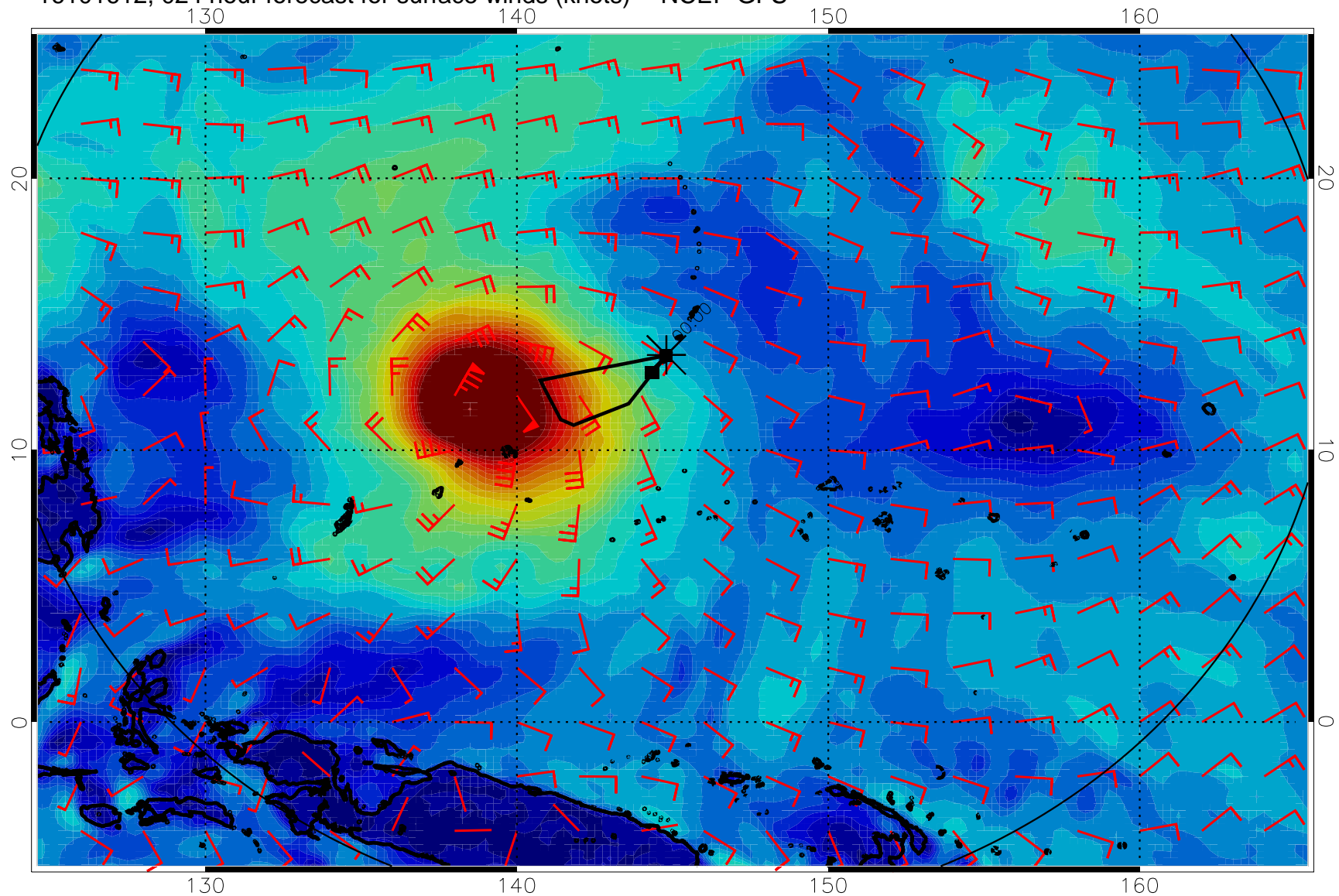
0 10 20 30
Surface Wind Speed, knots

16101606, 018 hour forecast for surface winds (knots) -- NCEP GFS



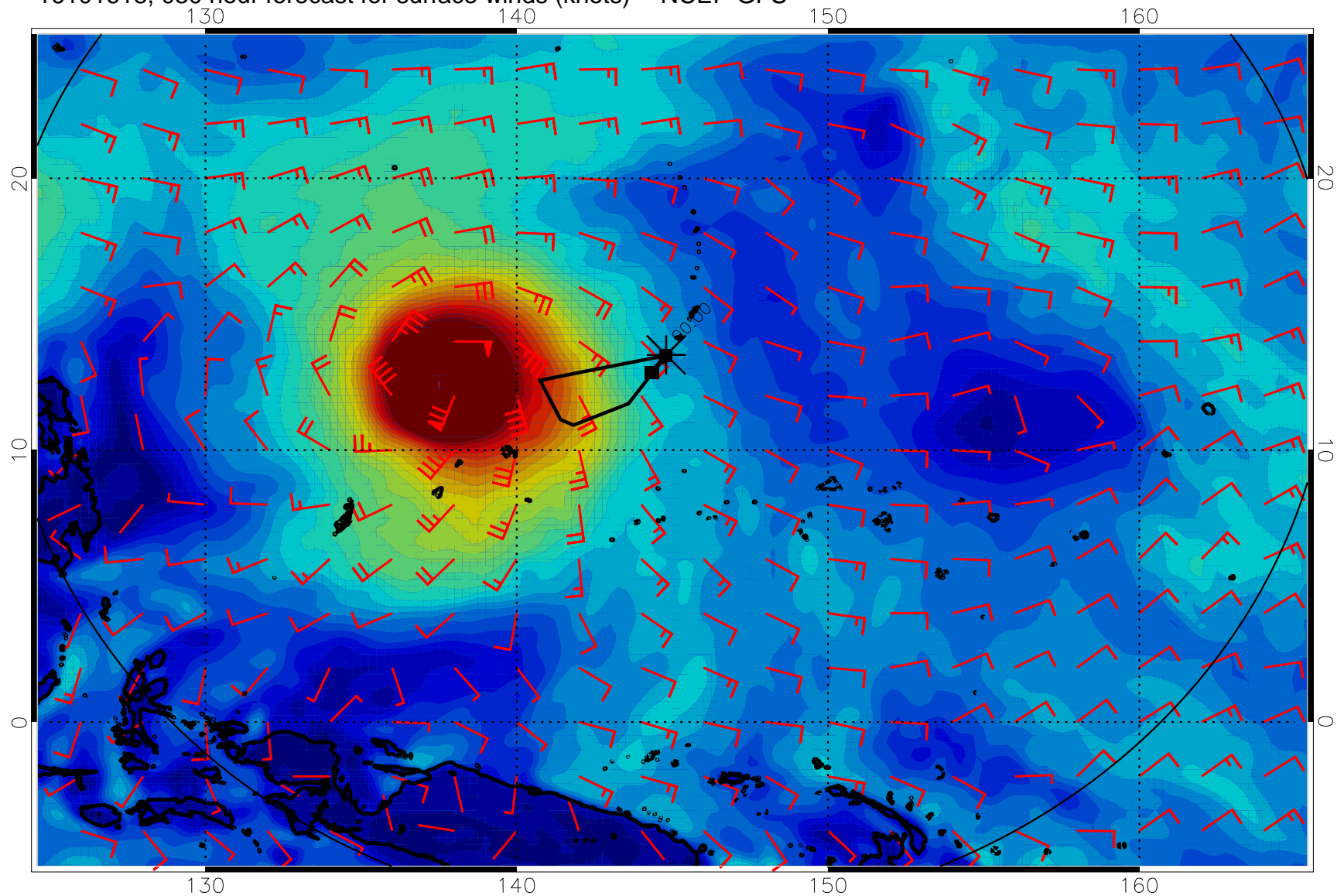
0 10 20 30
Surface Wind Speed, knots

16101612, 024 hour forecast for surface winds (knots) -- NCEP GFS



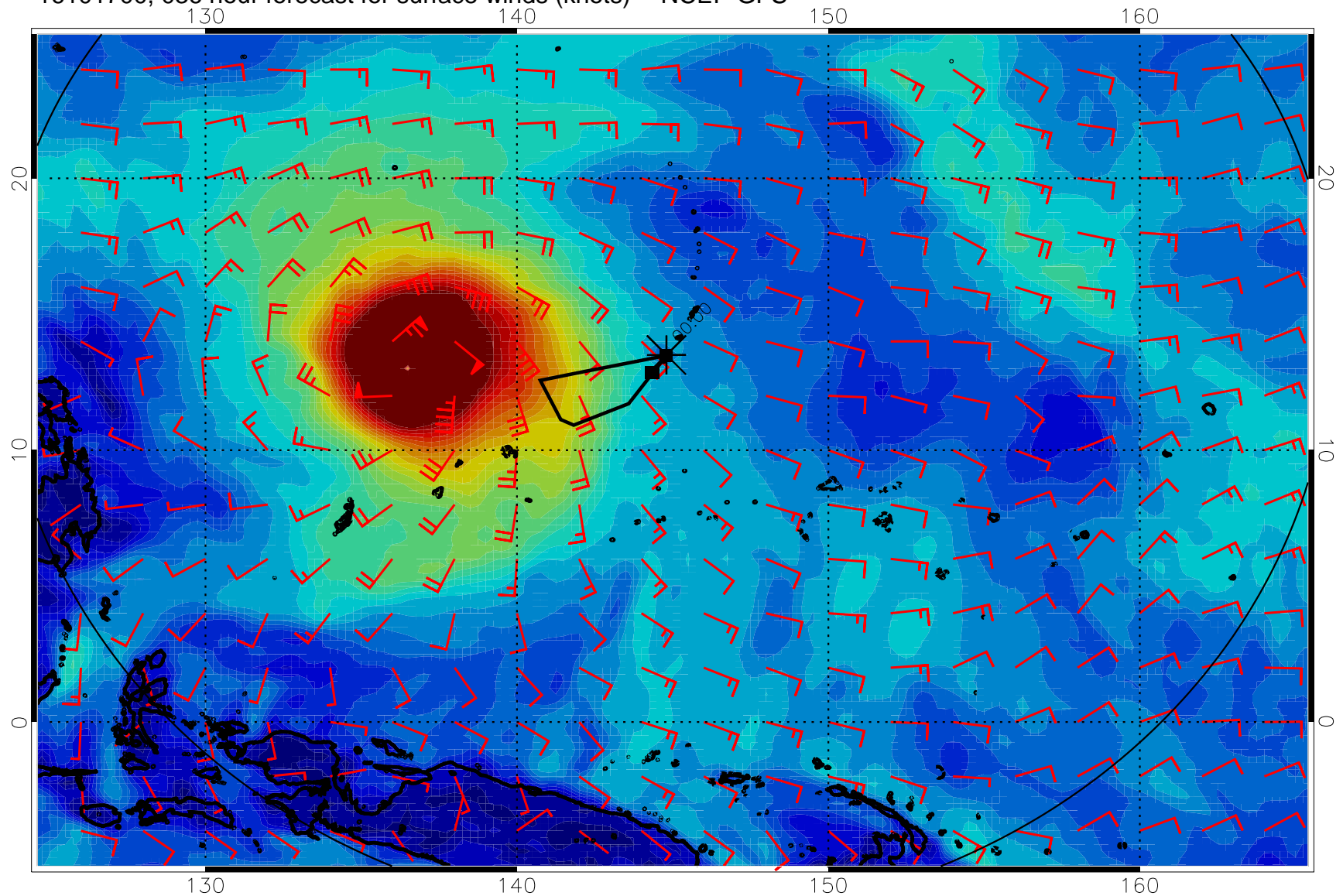
0 10 20 30
Surface Wind Speed, knots

16101618, 030 hour forecast for surface winds (knots) -- NCEP GFS



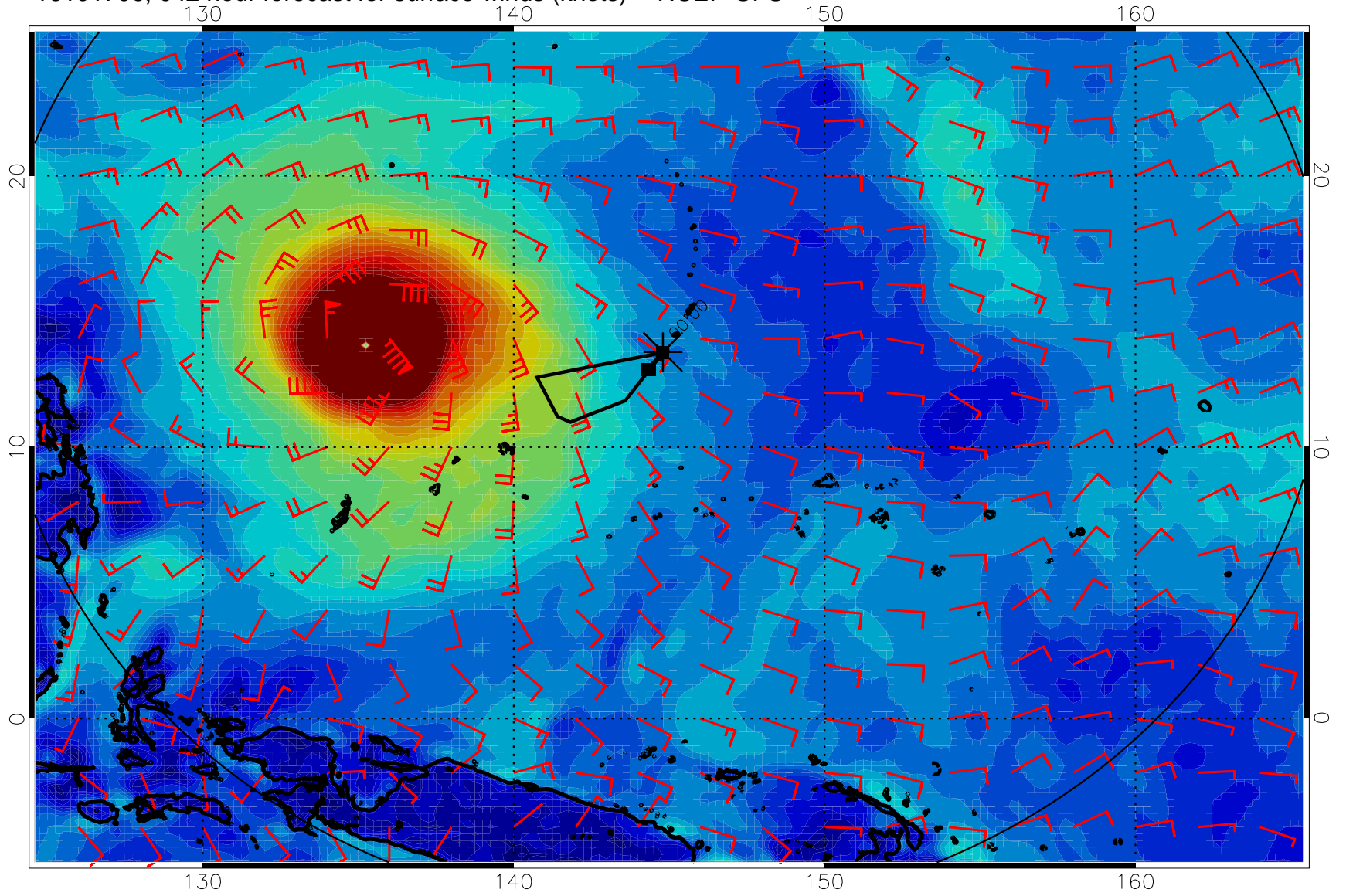
Surface Wind Speed, knots

16101700, 036 hour forecast for surface winds (knots) -- NCEP GFS



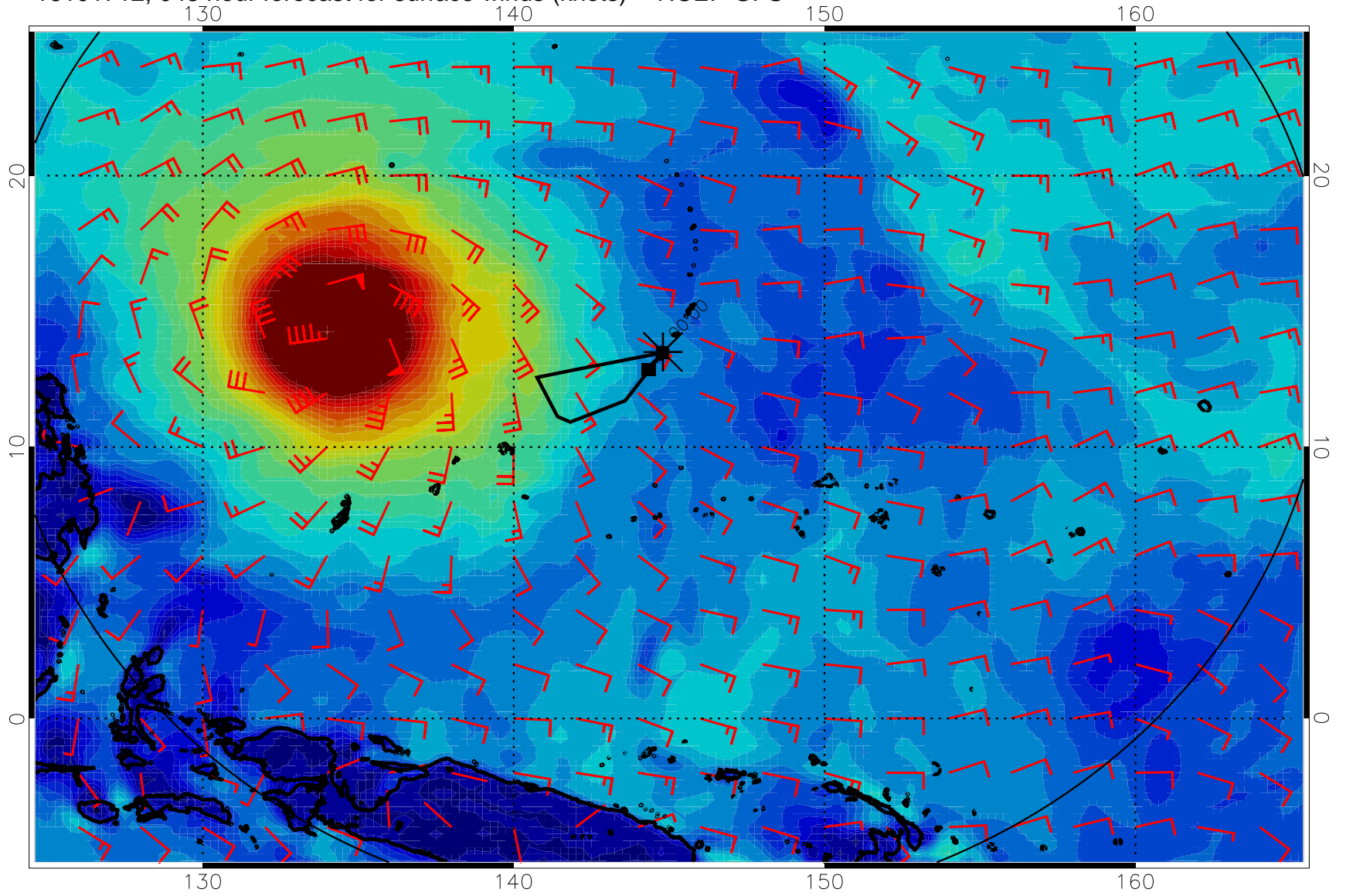
0 10 20 30
Surface Wind Speed, knots

16101706, 042 hour forecast for surface winds (knots) -- NCEP GFS



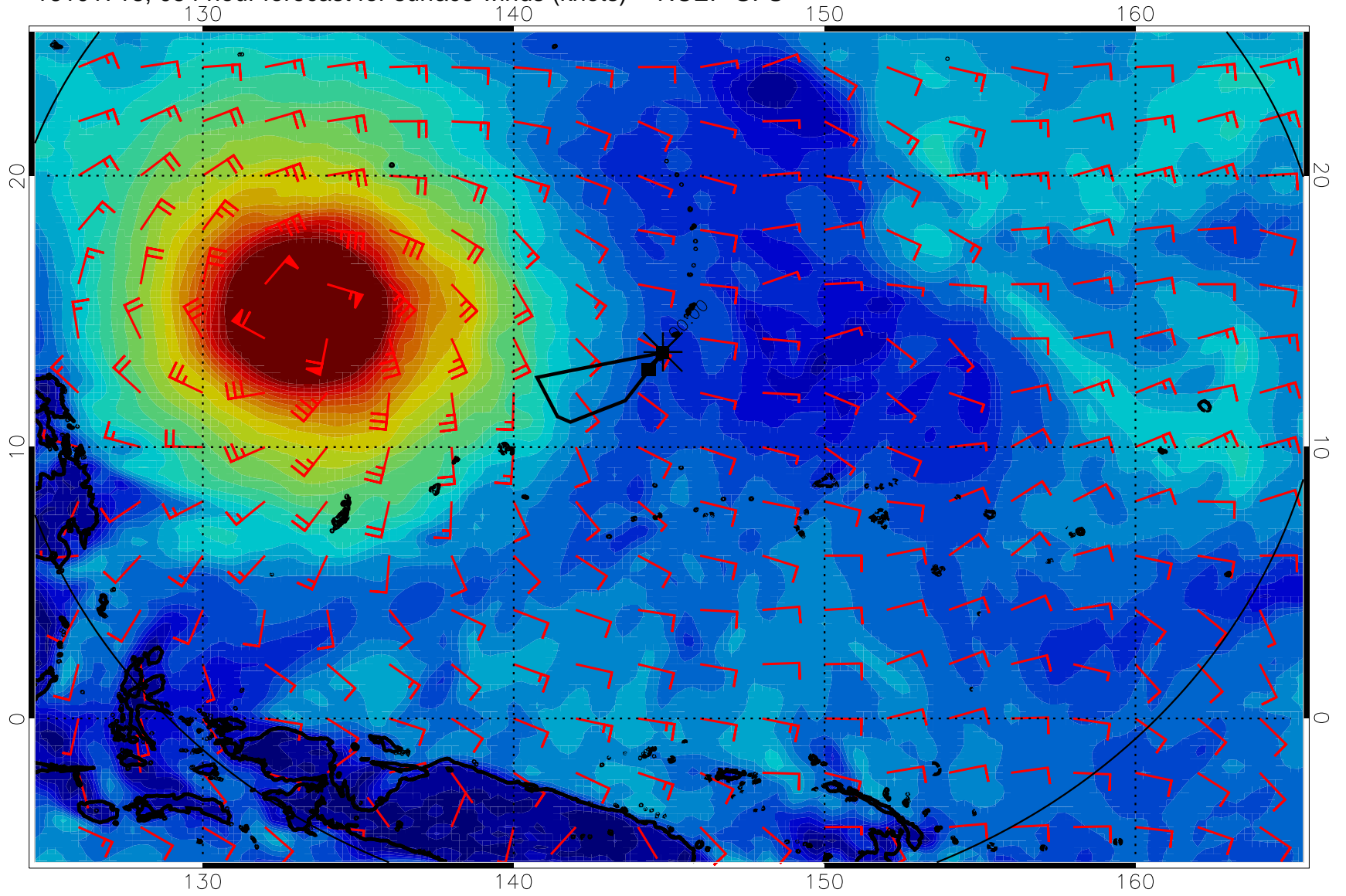
0 10 20 30
Surface Wind Speed, knots

16101712, 048 hour forecast for surface winds (knots) -- NCEP GFS



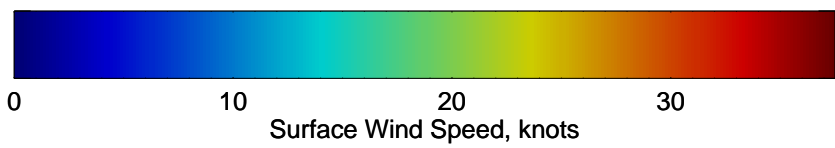
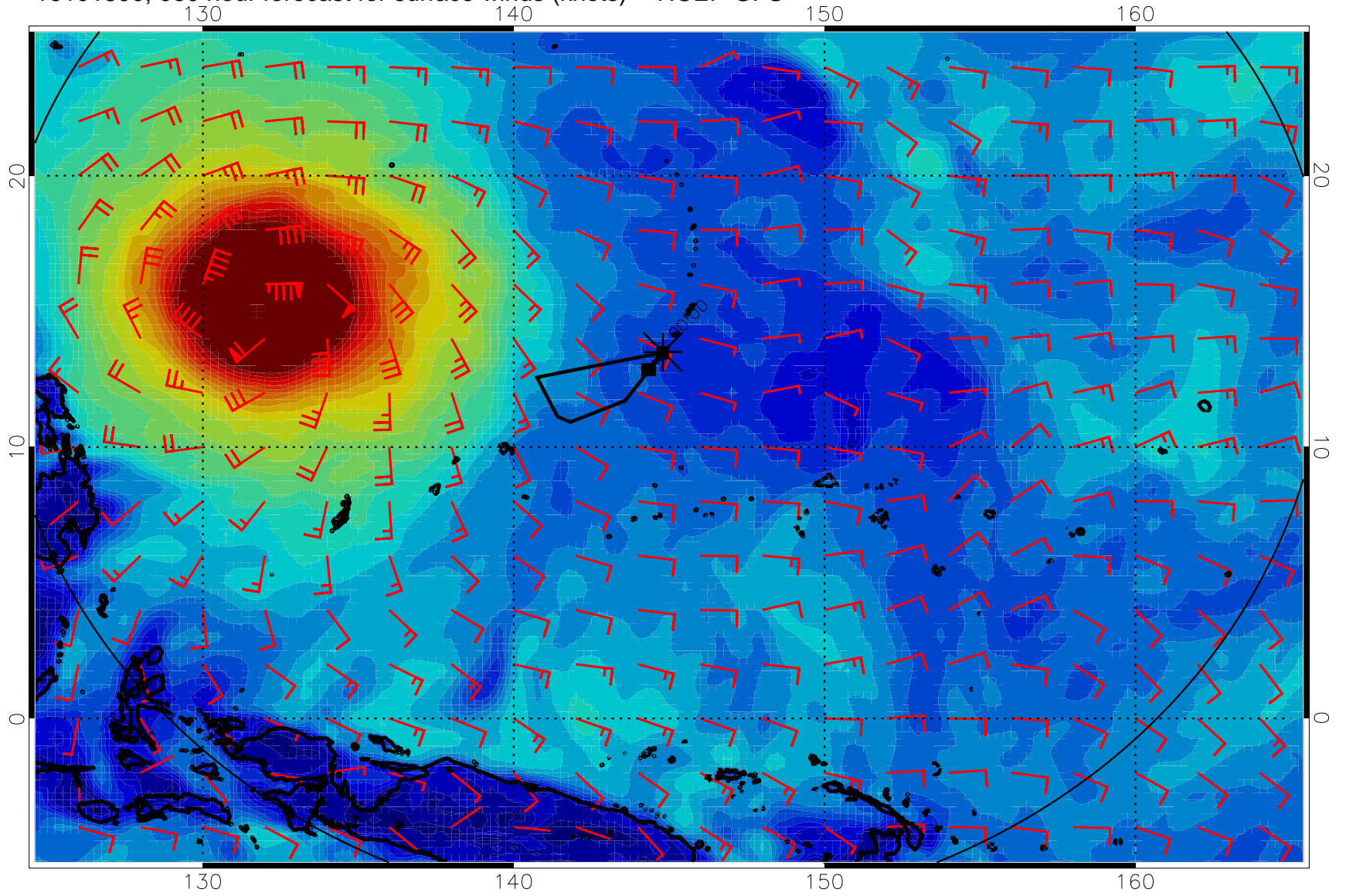
0 10 20 30
Surface Wind Speed, knots

16101718, 054 hour forecast for surface winds (knots) -- NCEP GFS

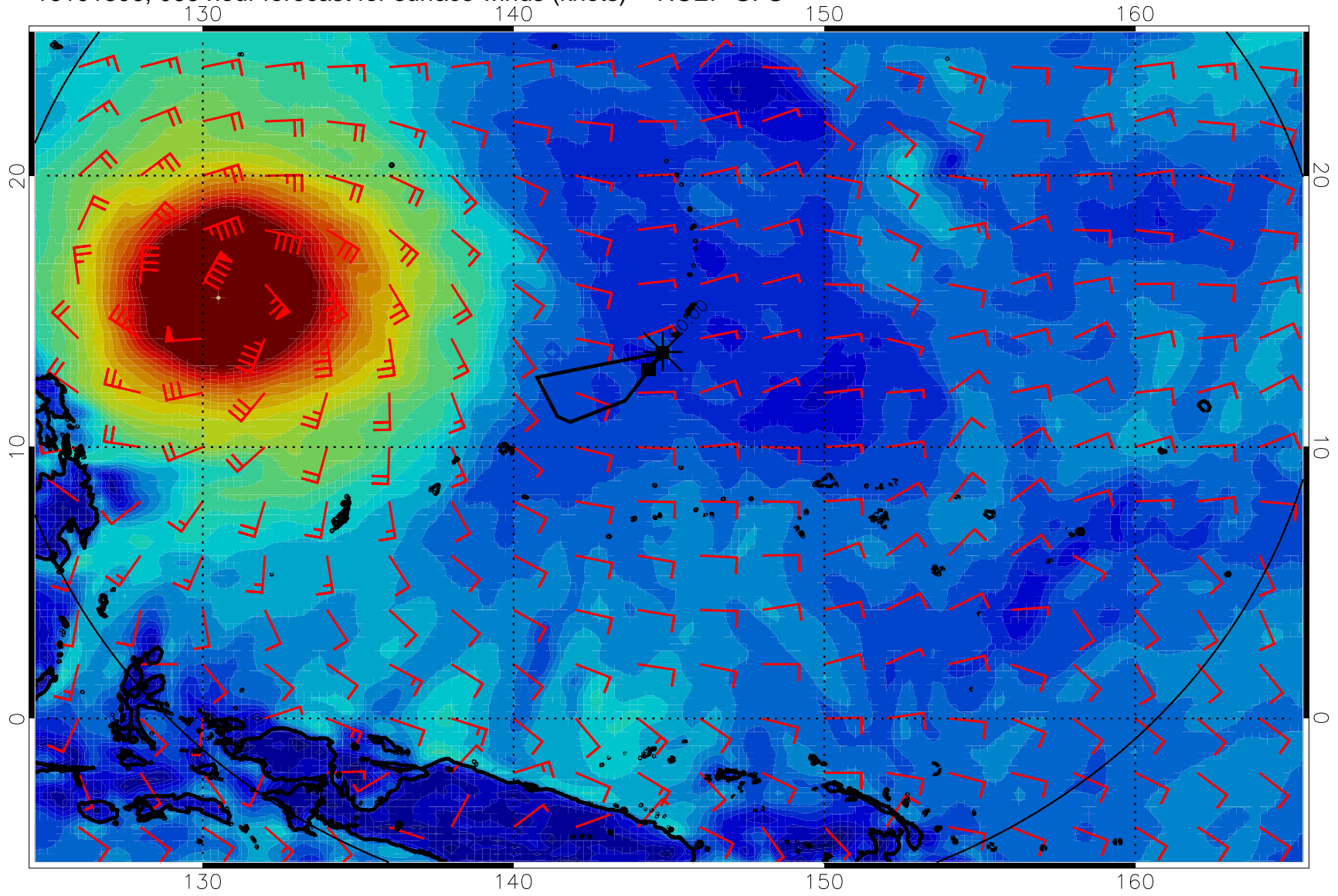


0 10 20 30
Surface Wind Speed, knots

16101800, 060 hour forecast for surface winds (knots) -- NCEP GFS

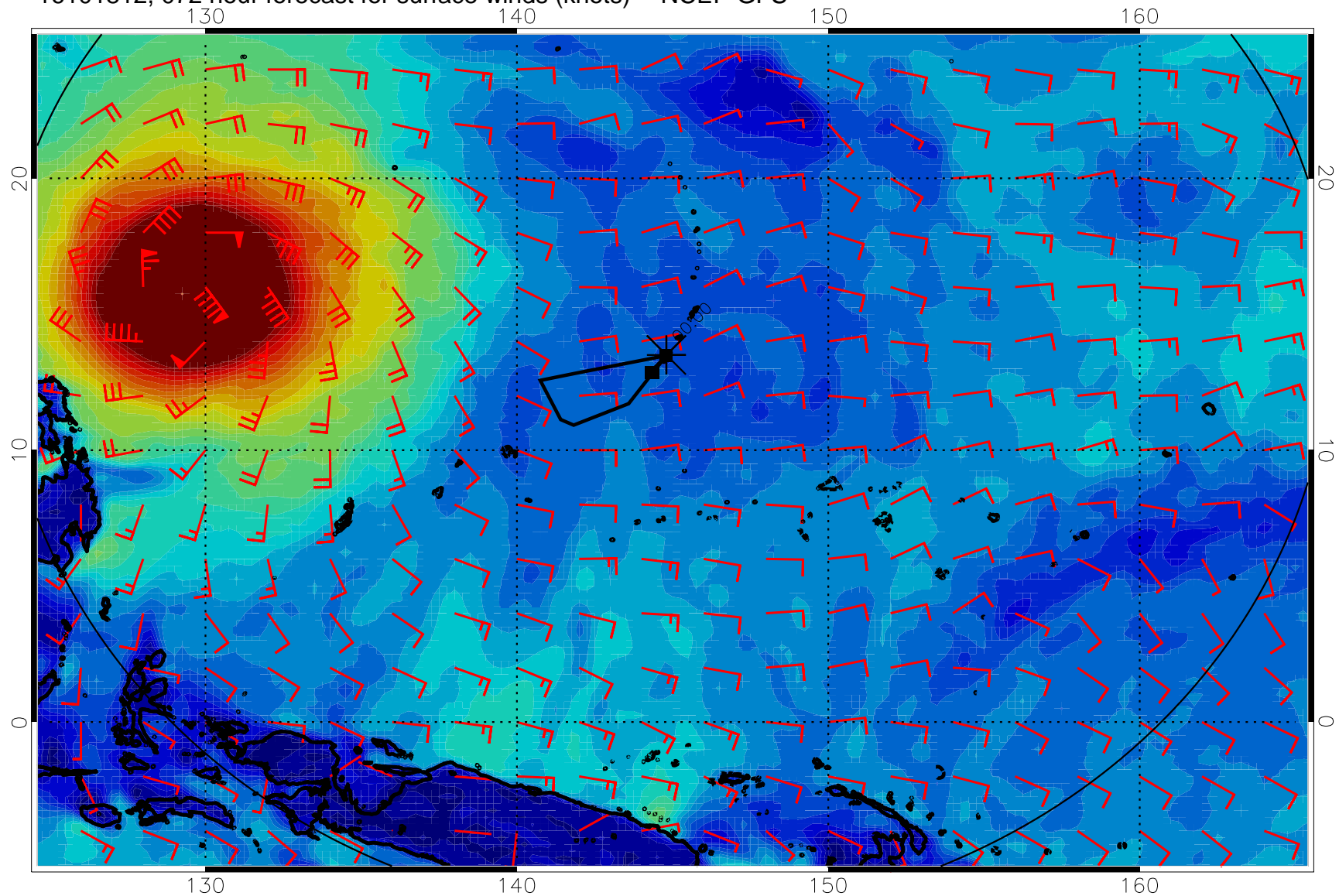


16101806, 066 hour forecast for surface winds (knots) -- NCEP GFS



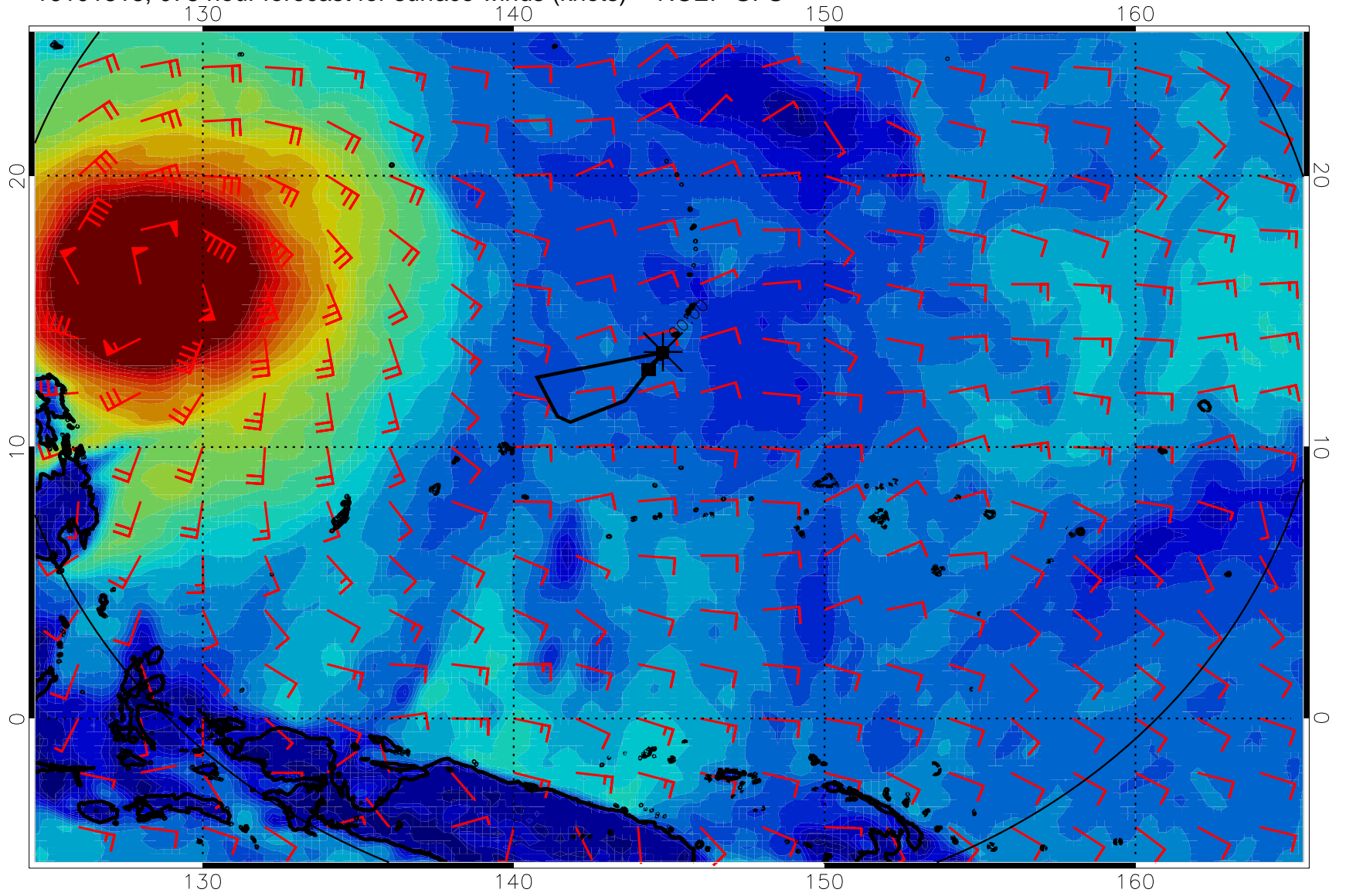
0 10 20 30
Surface Wind Speed, knots

16101812, 072 hour forecast for surface winds (knots) -- NCEP GFS



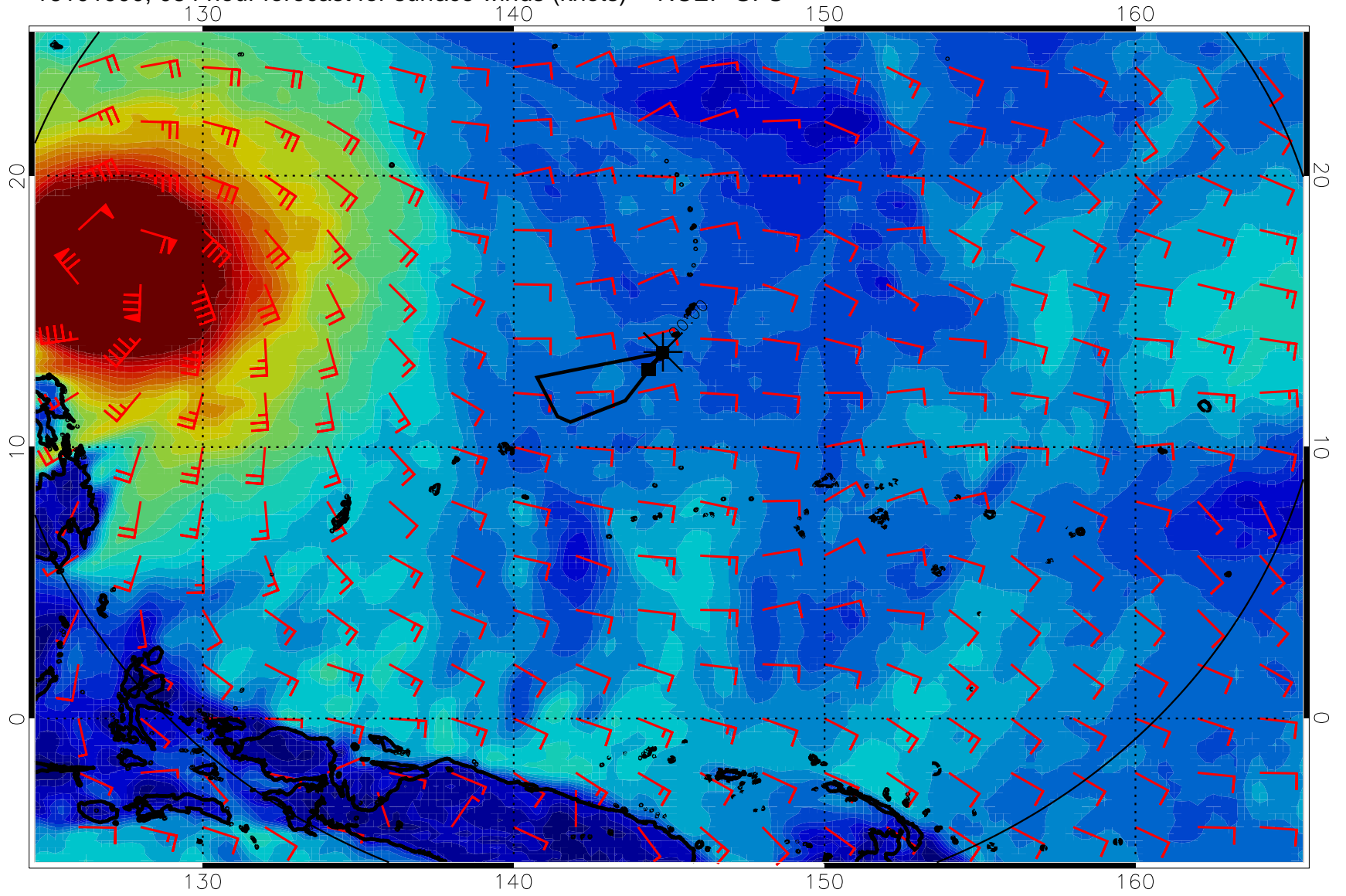
0 10 20 30
Surface Wind Speed, knots

16101818, 078 hour forecast for surface winds (knots) -- NCEP GFS



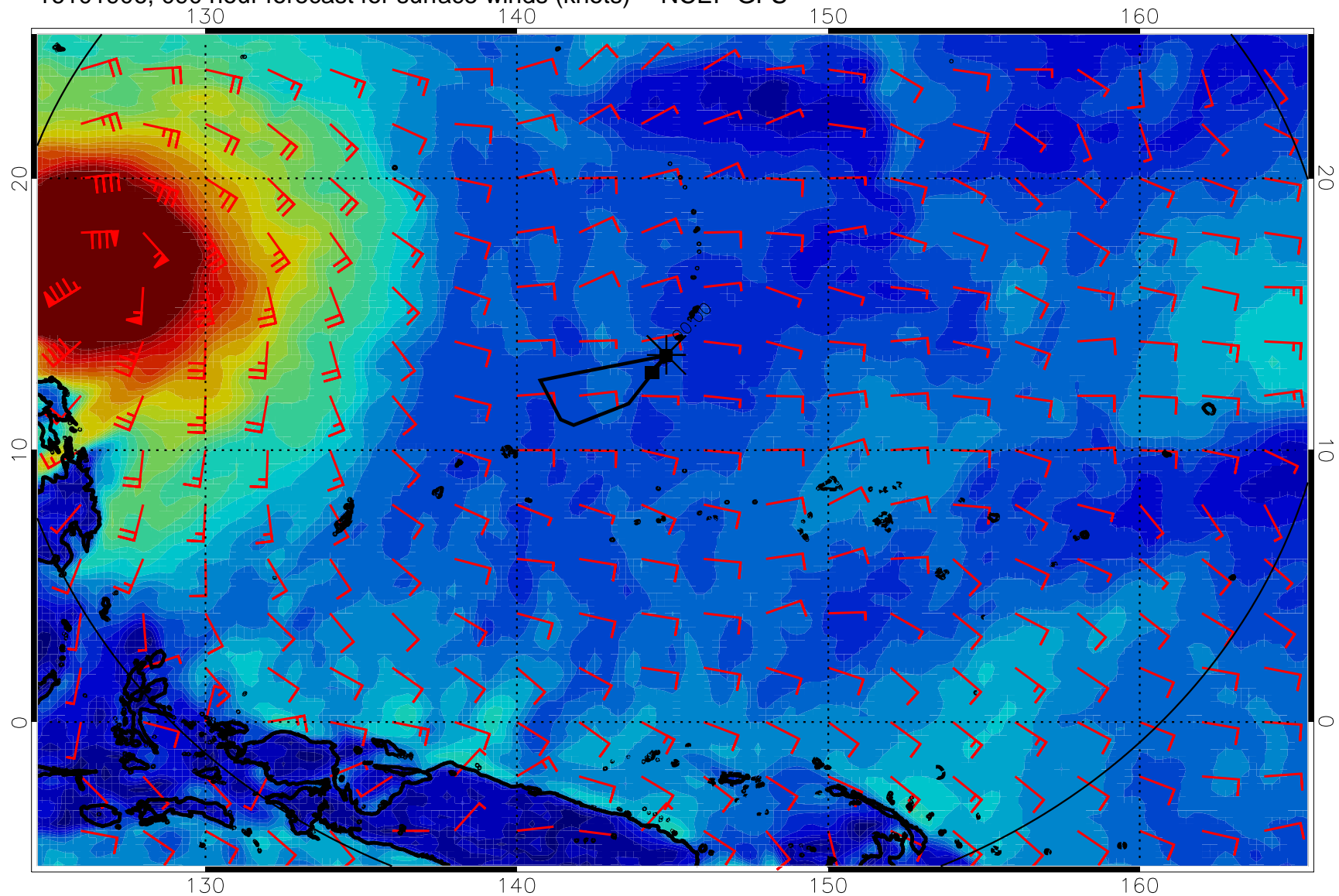
0 10 20 30
Surface Wind Speed, knots

16101900, 084 hour forecast for surface winds (knots) -- NCEP GFS



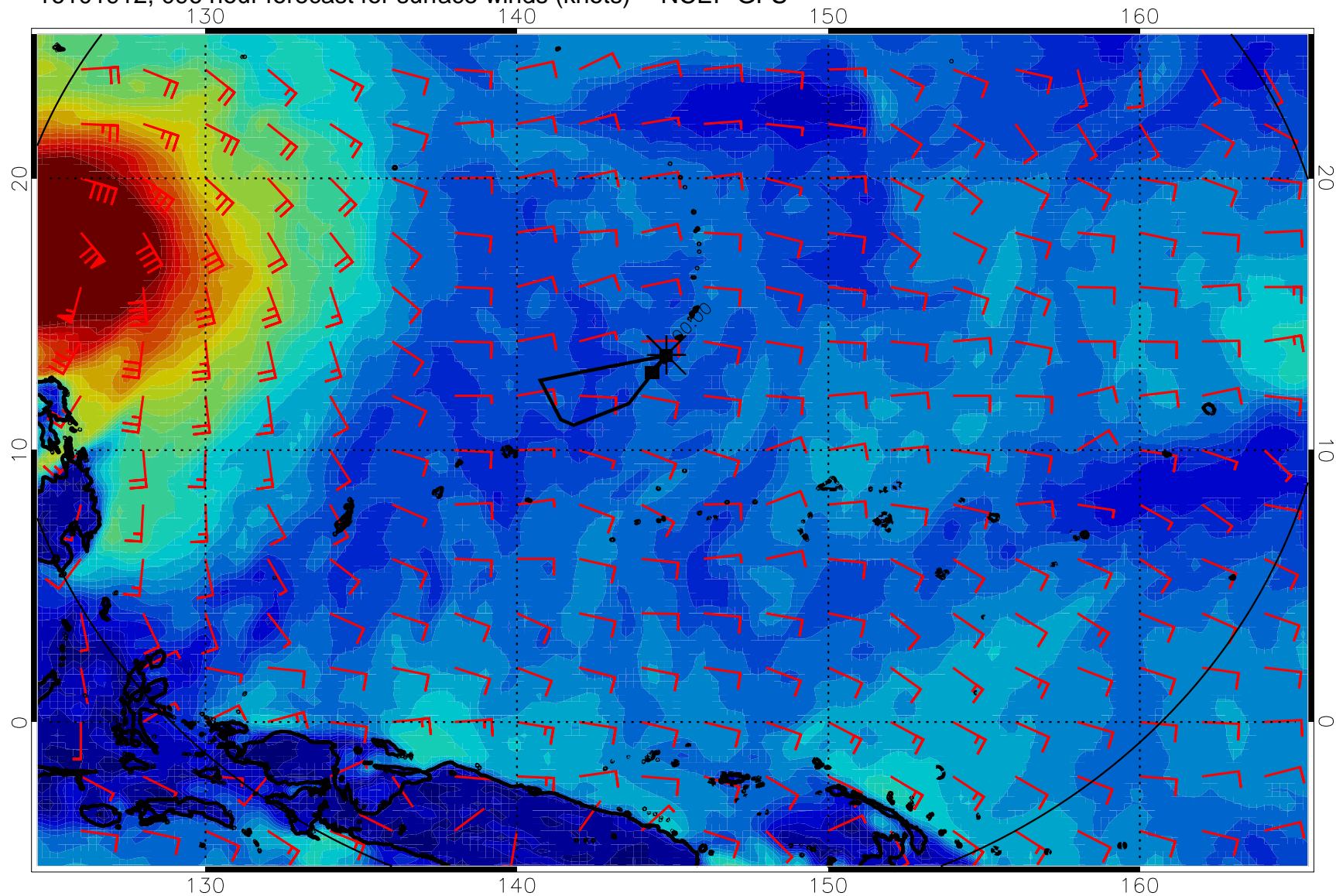
0 10 20 30
Surface Wind Speed, knots

16101906, 090 hour forecast for surface winds (knots) -- NCEP GFS



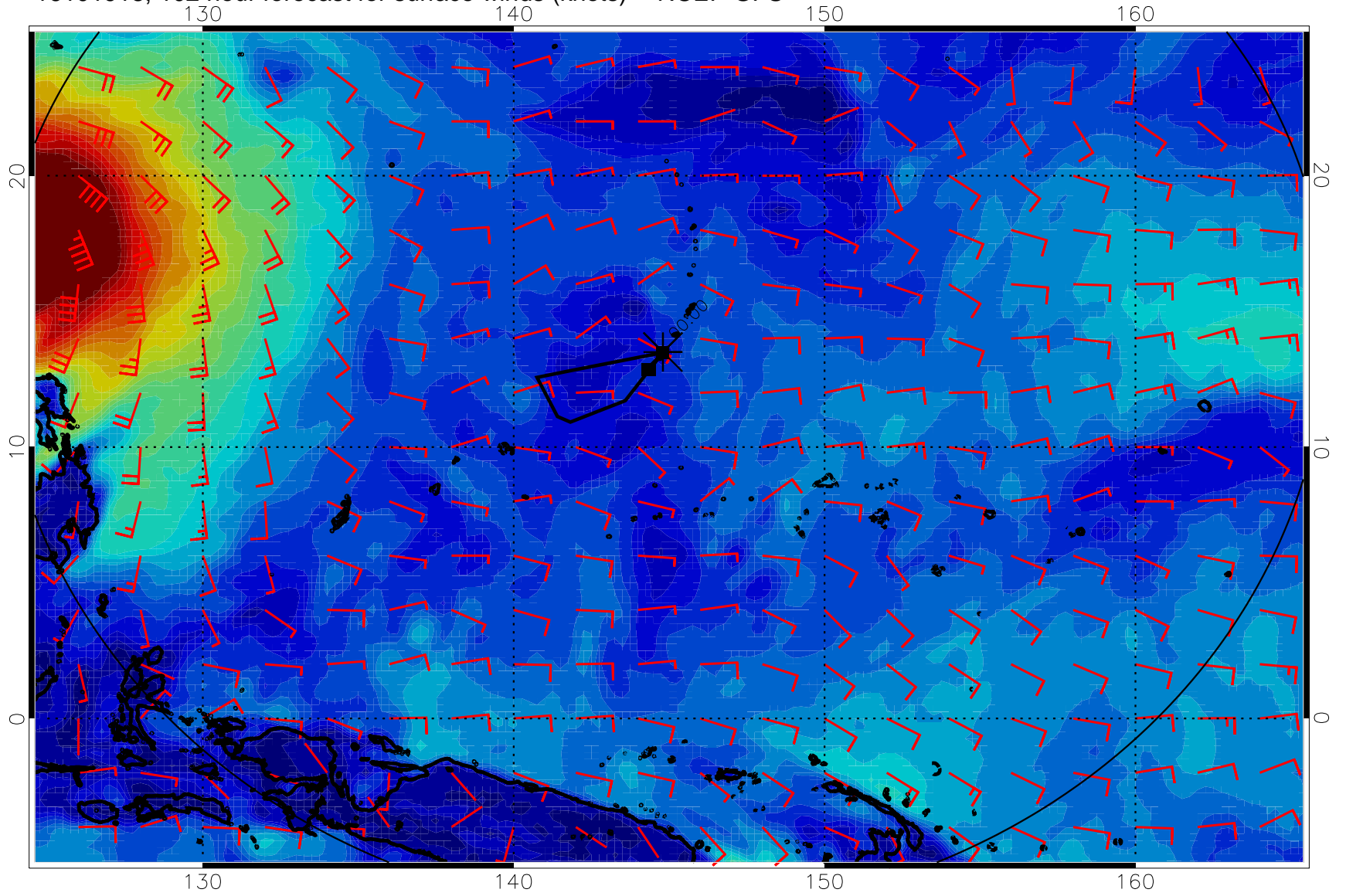
0 10 20 30
Surface Wind Speed, knots

16101912, 096 hour forecast for surface winds (knots) -- NCEP GFS



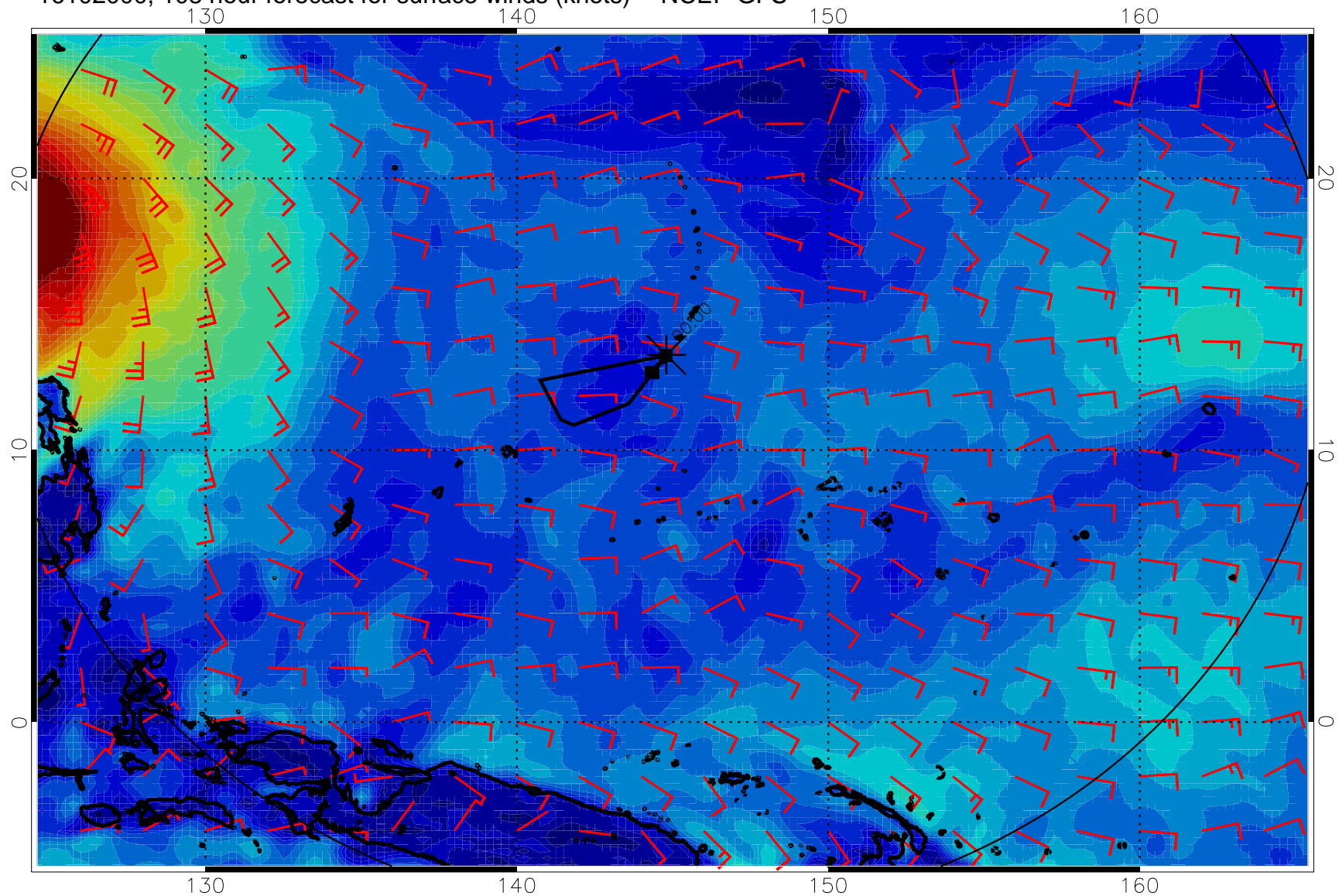
0 10 20 30
Surface Wind Speed, knots

16101918, 102 hour forecast for surface winds (knots) -- NCEP GFS



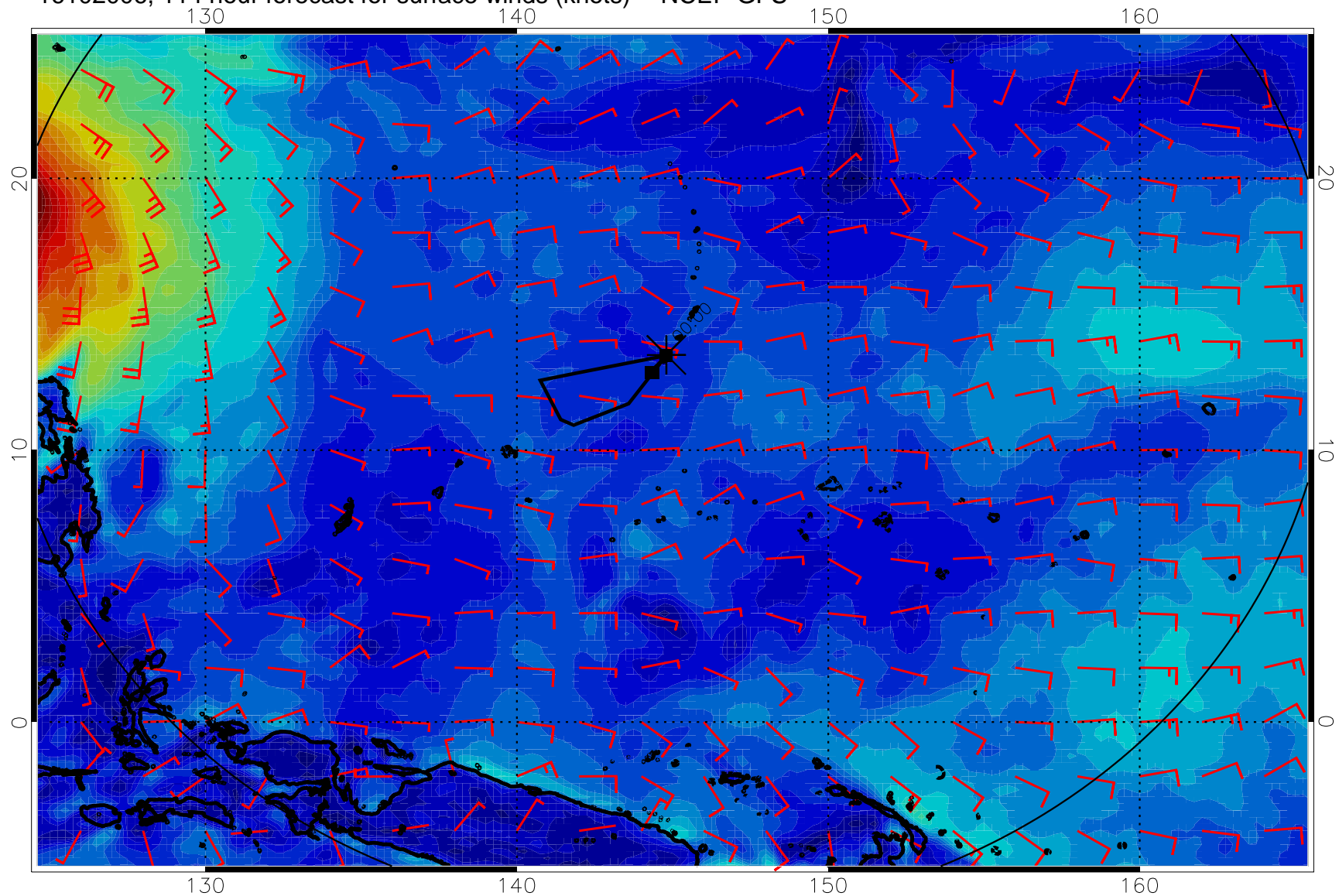
0 10 20 30
Surface Wind Speed, knots

16102000, 108 hour forecast for surface winds (knots) -- NCEP GFS



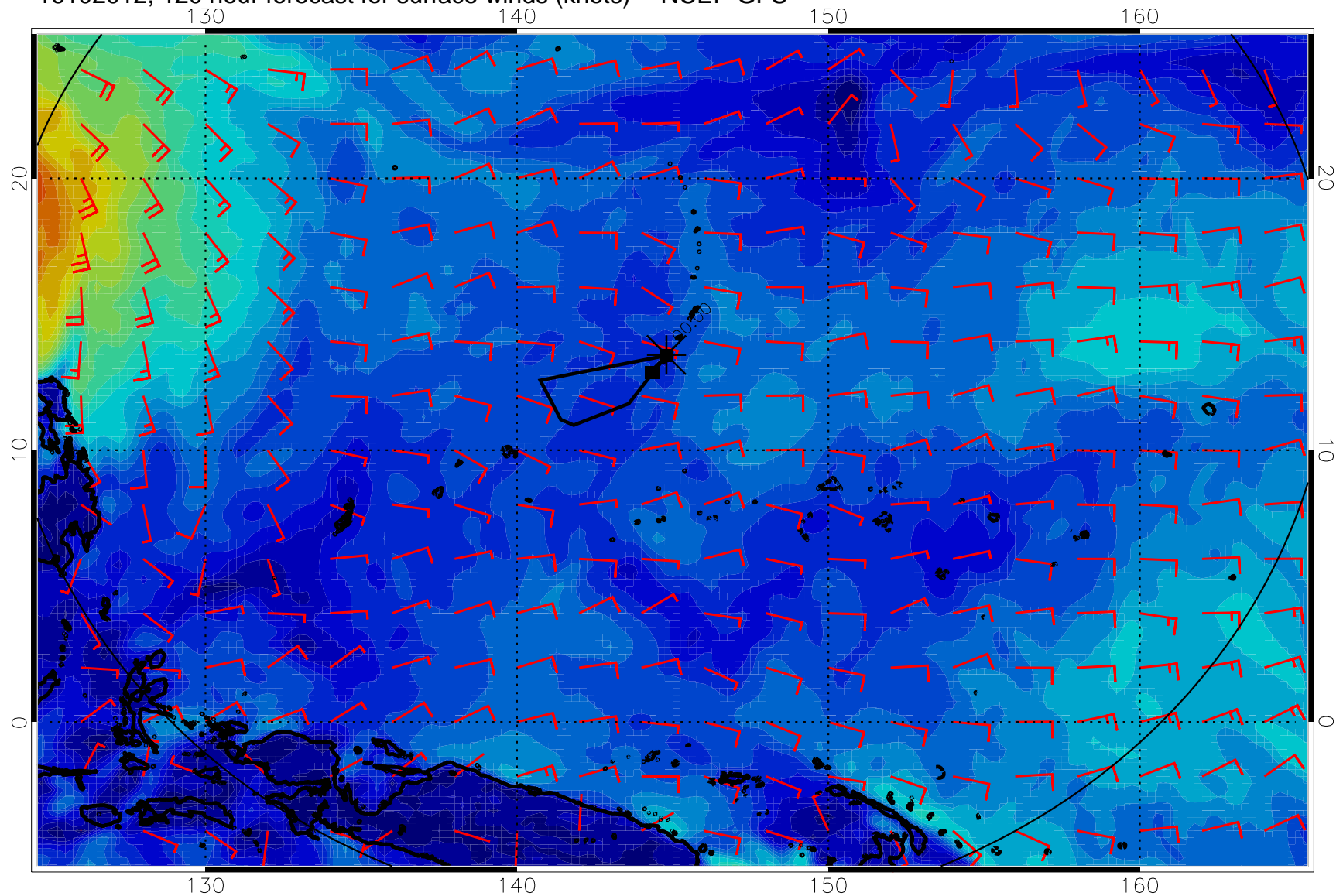
0 10 20 30
Surface Wind Speed, knots

16102006, 114 hour forecast for surface winds (knots) -- NCEP GFS



0 10 20 30
Surface Wind Speed, knots

16102012, 120 hour forecast for surface winds (knots) -- NCEP GFS



0 10 20 30
Surface Wind Speed, knots