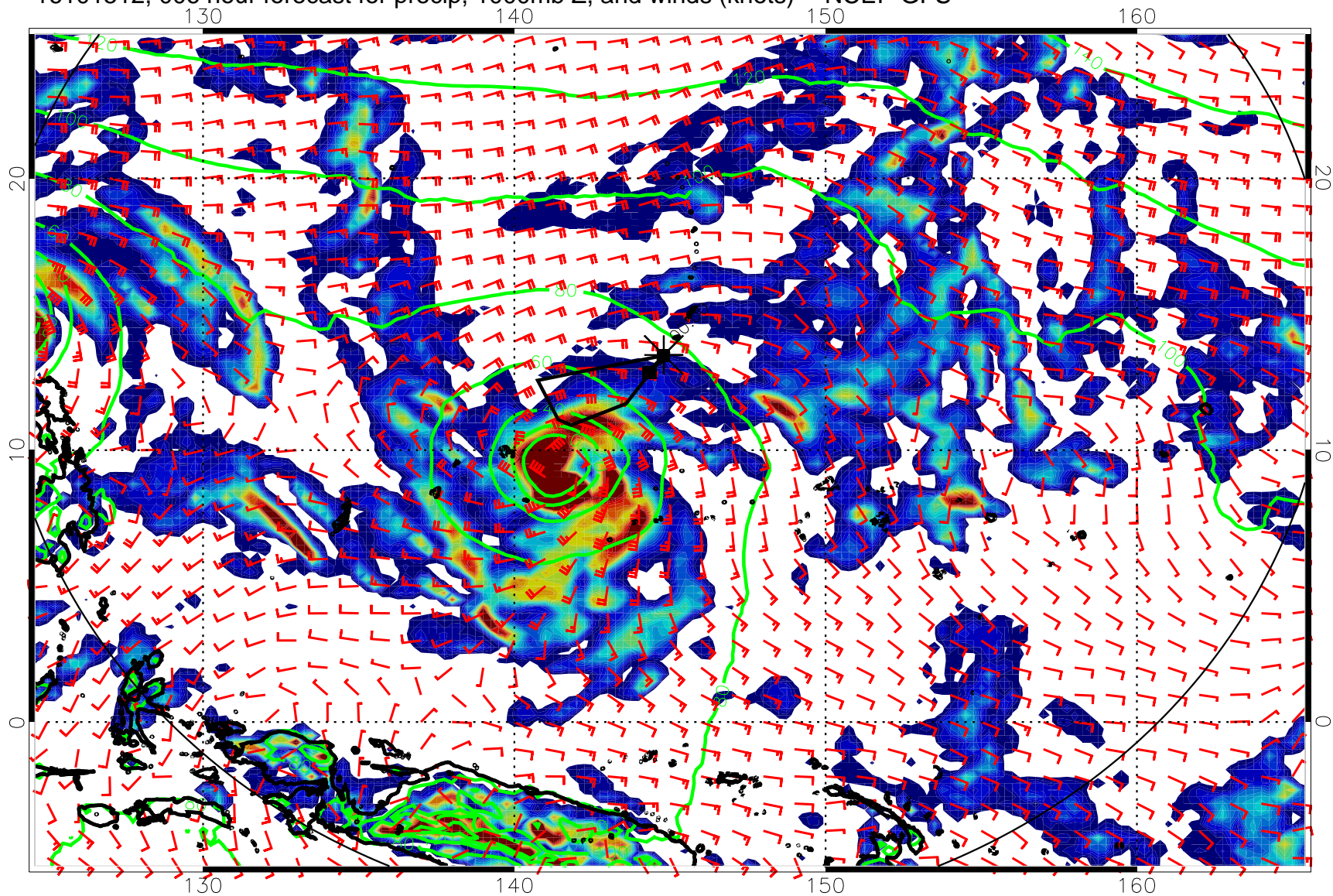
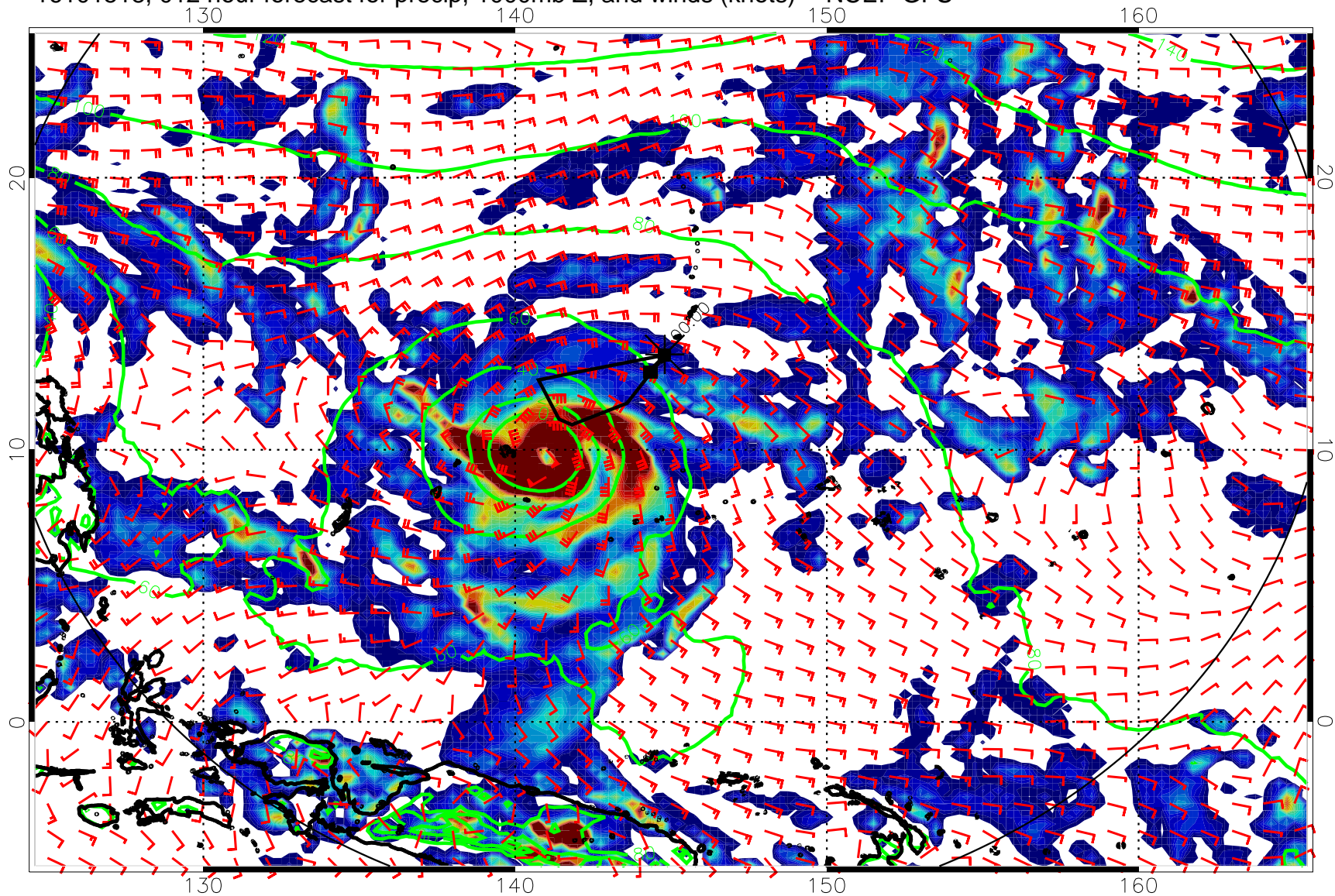


16101512, 006 hour forecast for precip, 1000mb Z, and winds (knots) -- NCEP GFS



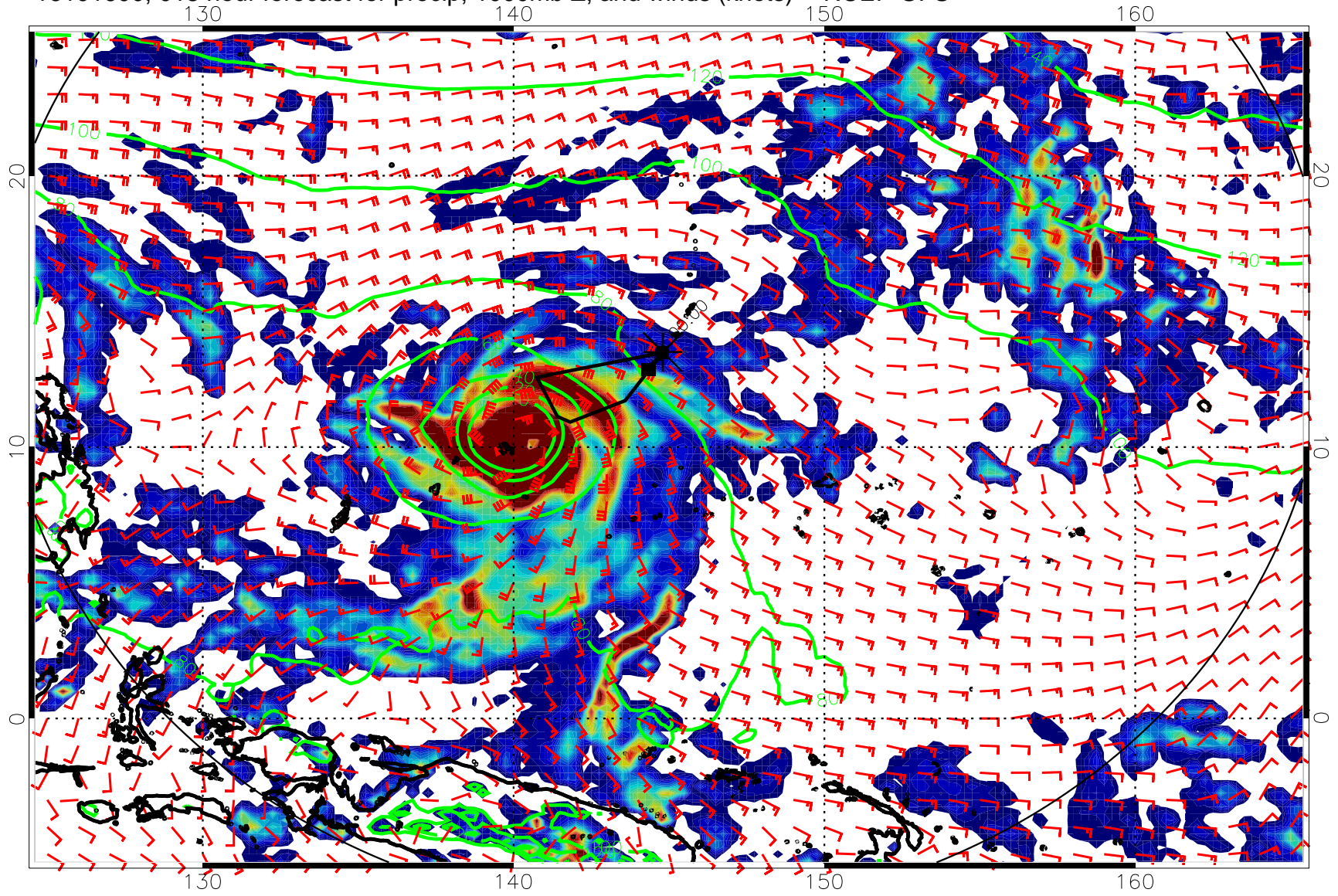
Precipitation, mm/day

16101518, 012 hour forecast for precip, 1000mb Z, and winds (knots) -- NCEP GFS



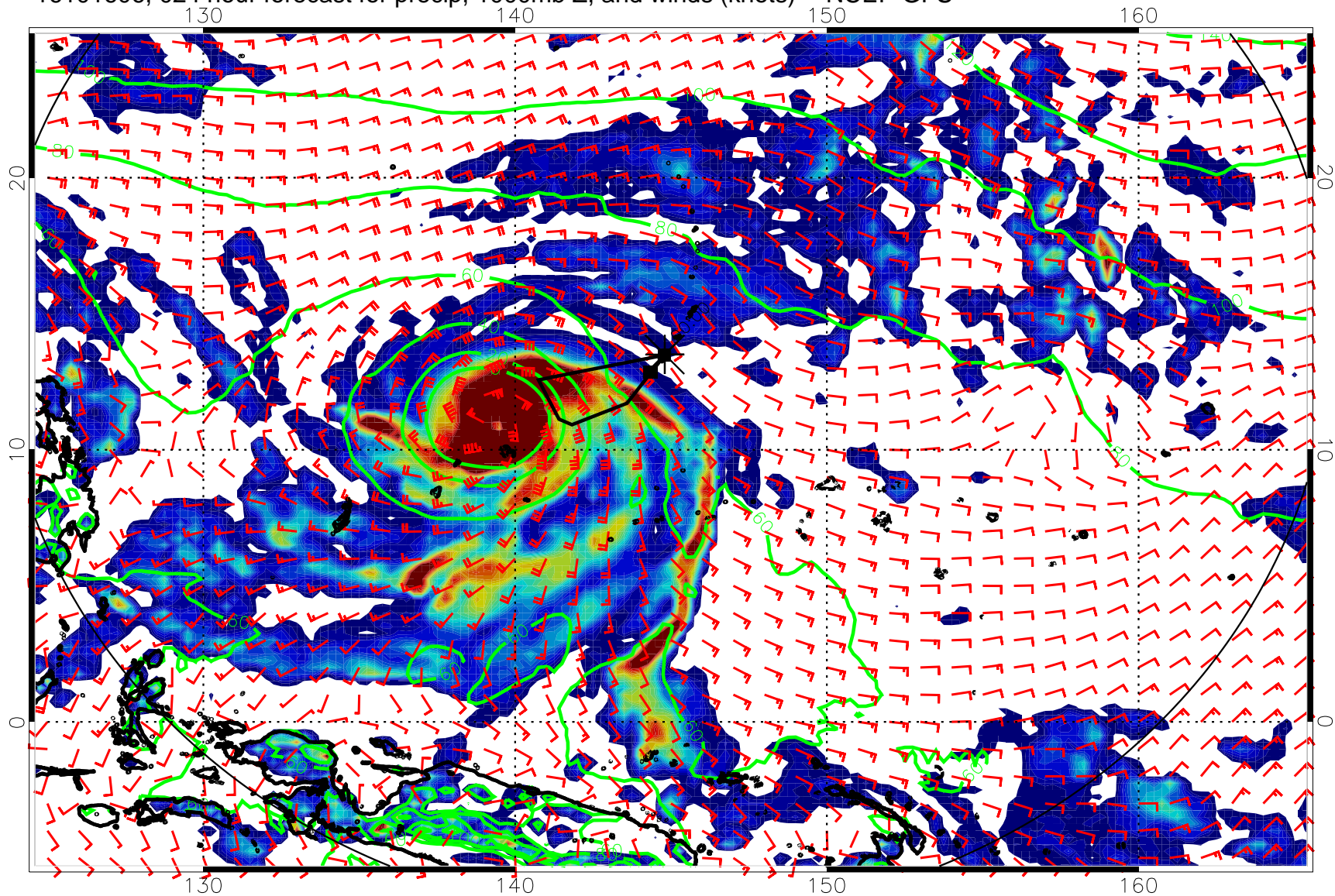
20 40 60 80
Precipitation, mm/day

16101600, 018 hour forecast for precip, 1000mb Z, and winds (knots) -- NCEP GFS



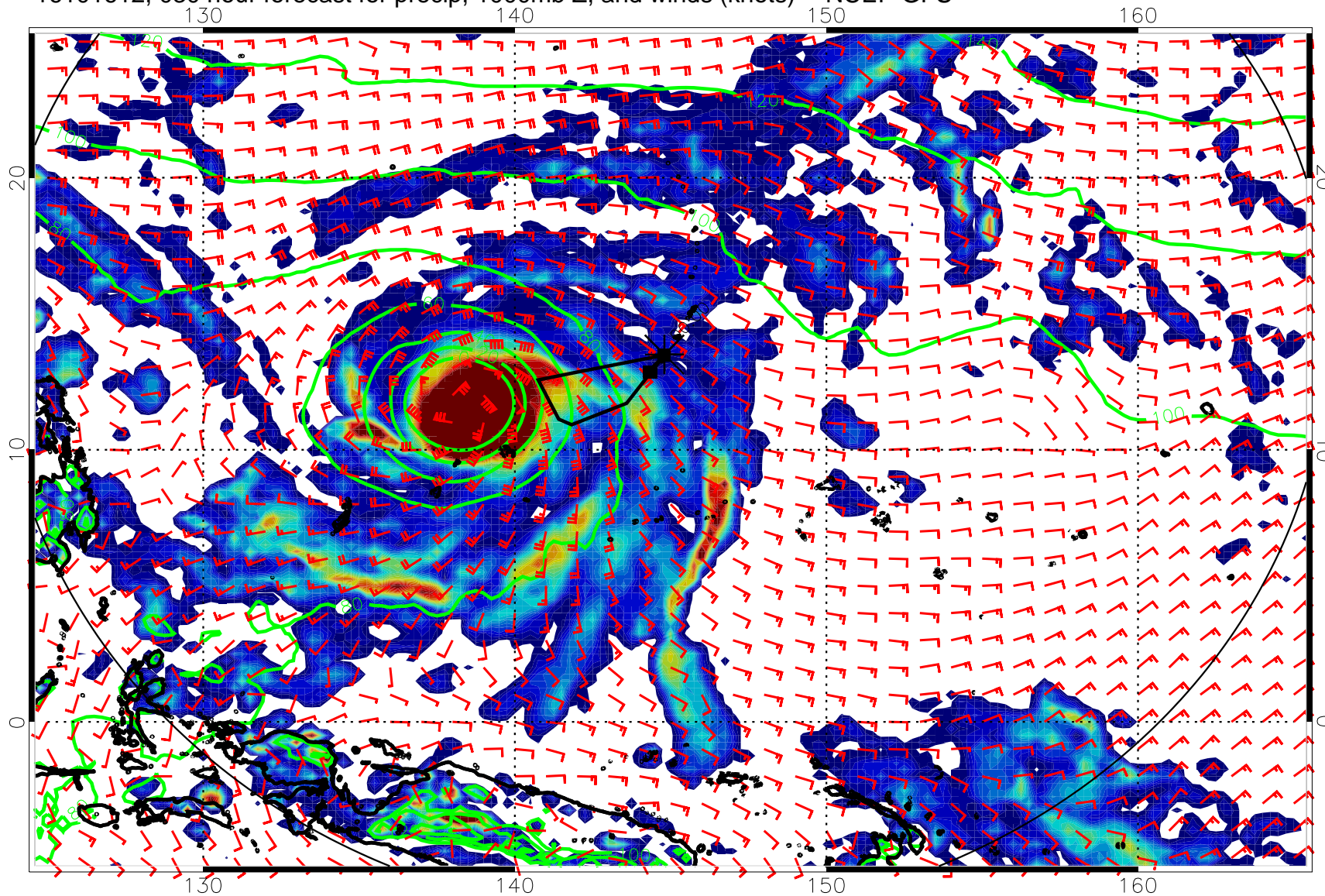
20 40 60 80
Precipitation, mm/day

16101606, 024 hour forecast for precip, 1000mb Z, and winds (knots) -- NCEP GFS



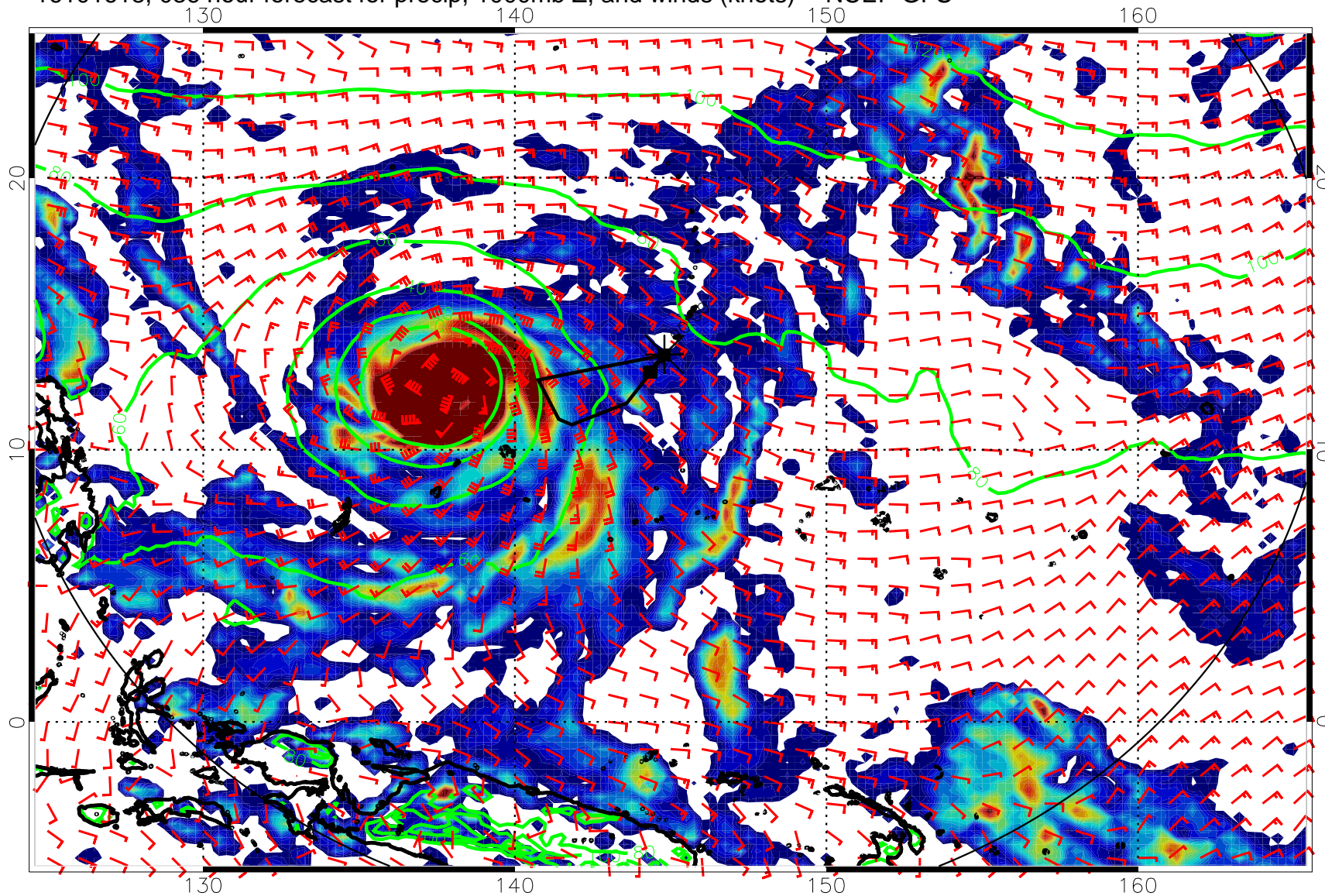
20 40 60 80
Precipitation, mm/day

16101612, 030 hour forecast for precip, 1000mb Z, and winds (knots) -- NCEP GFS



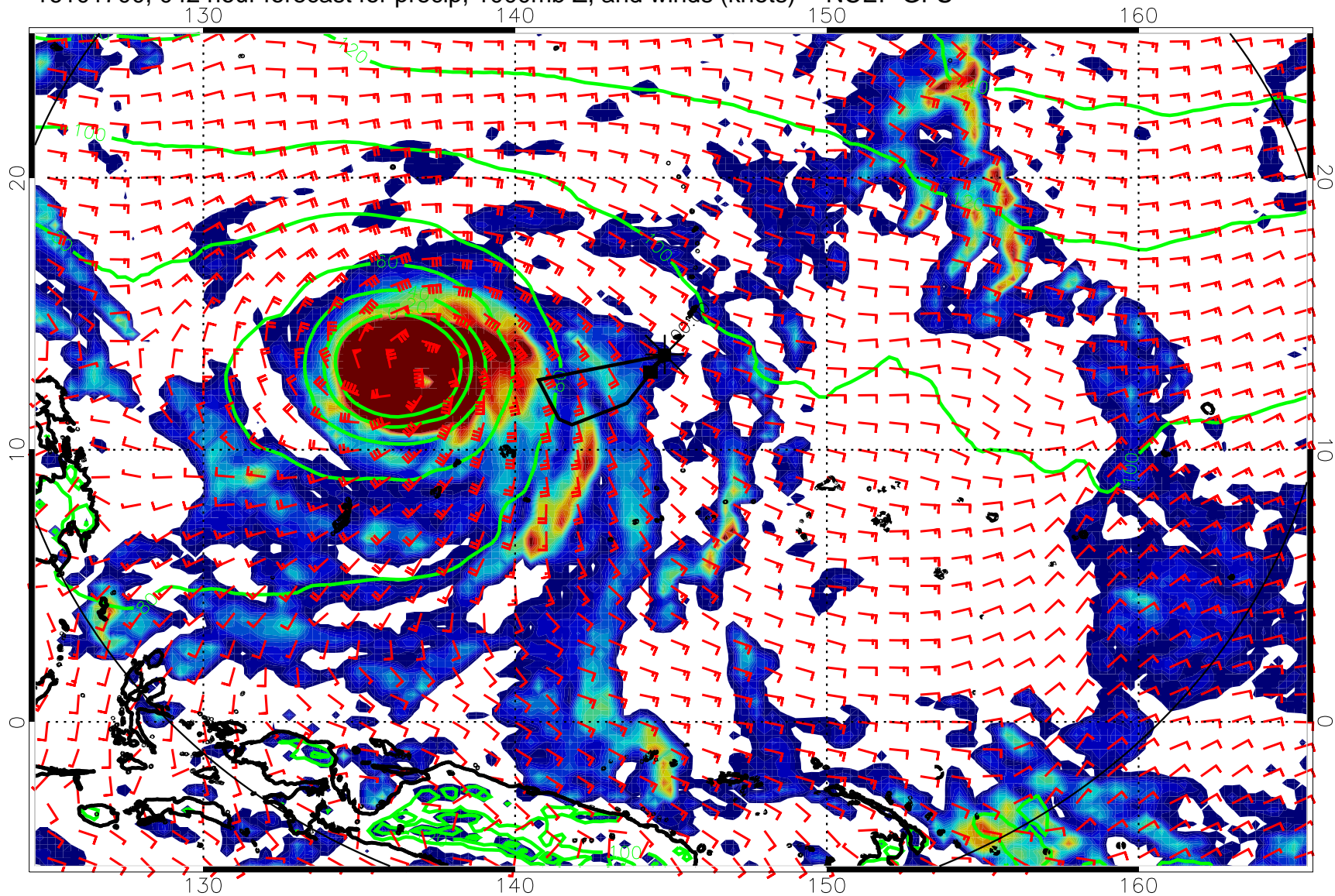
20 40 60 80
Precipitation, mm/day

16101618, 036 hour forecast for precip, 1000mb Z, and winds (knots) -- NCEP GFS



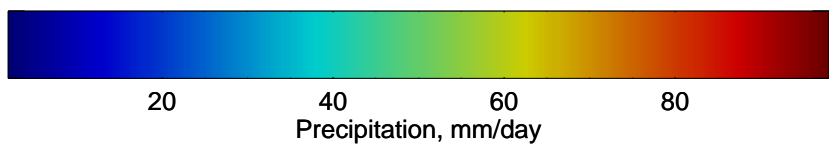
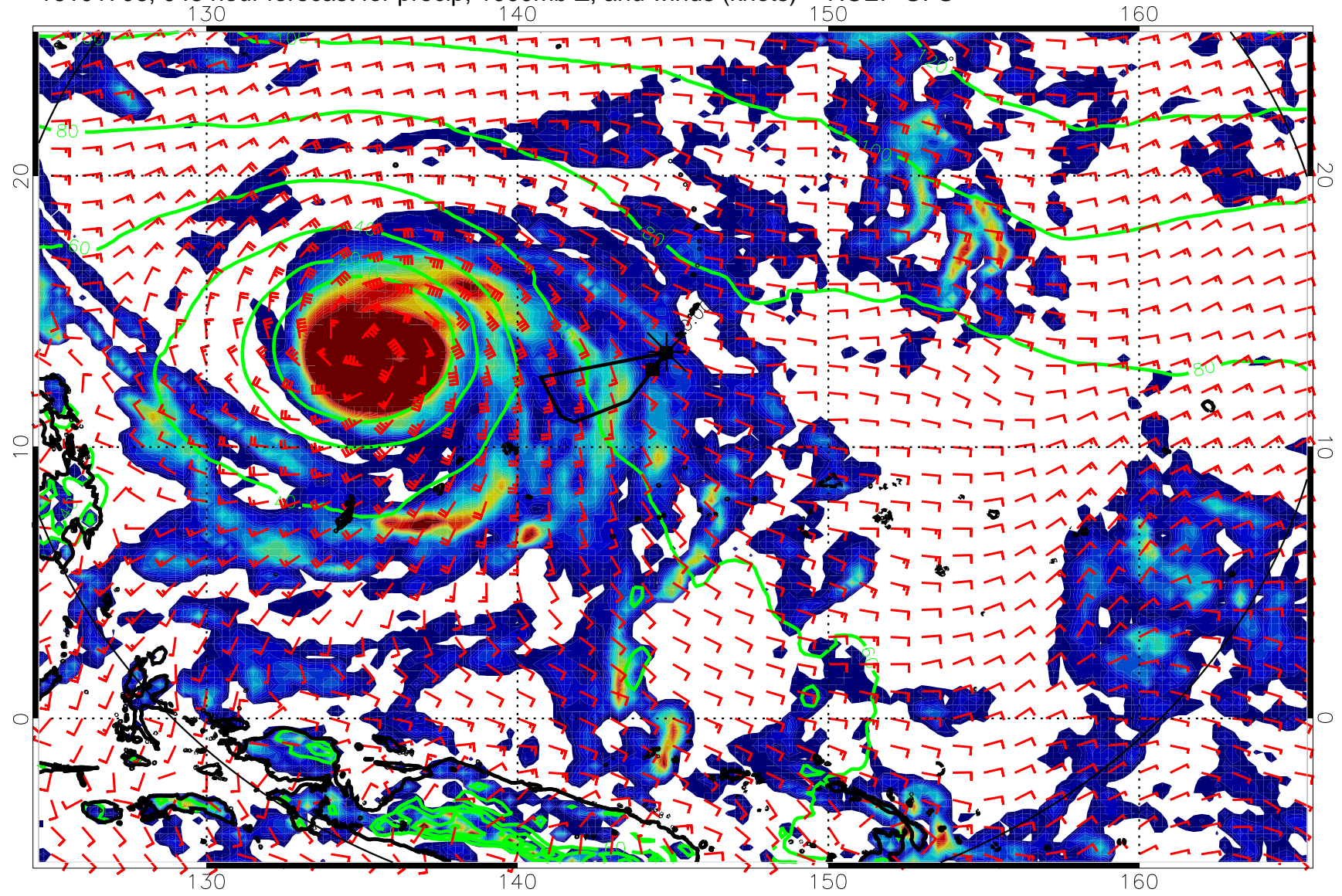
Precipitation, mm/day

16101700, 042 hour forecast for precip, 1000mb Z, and winds (knots) -- NCEP GFS

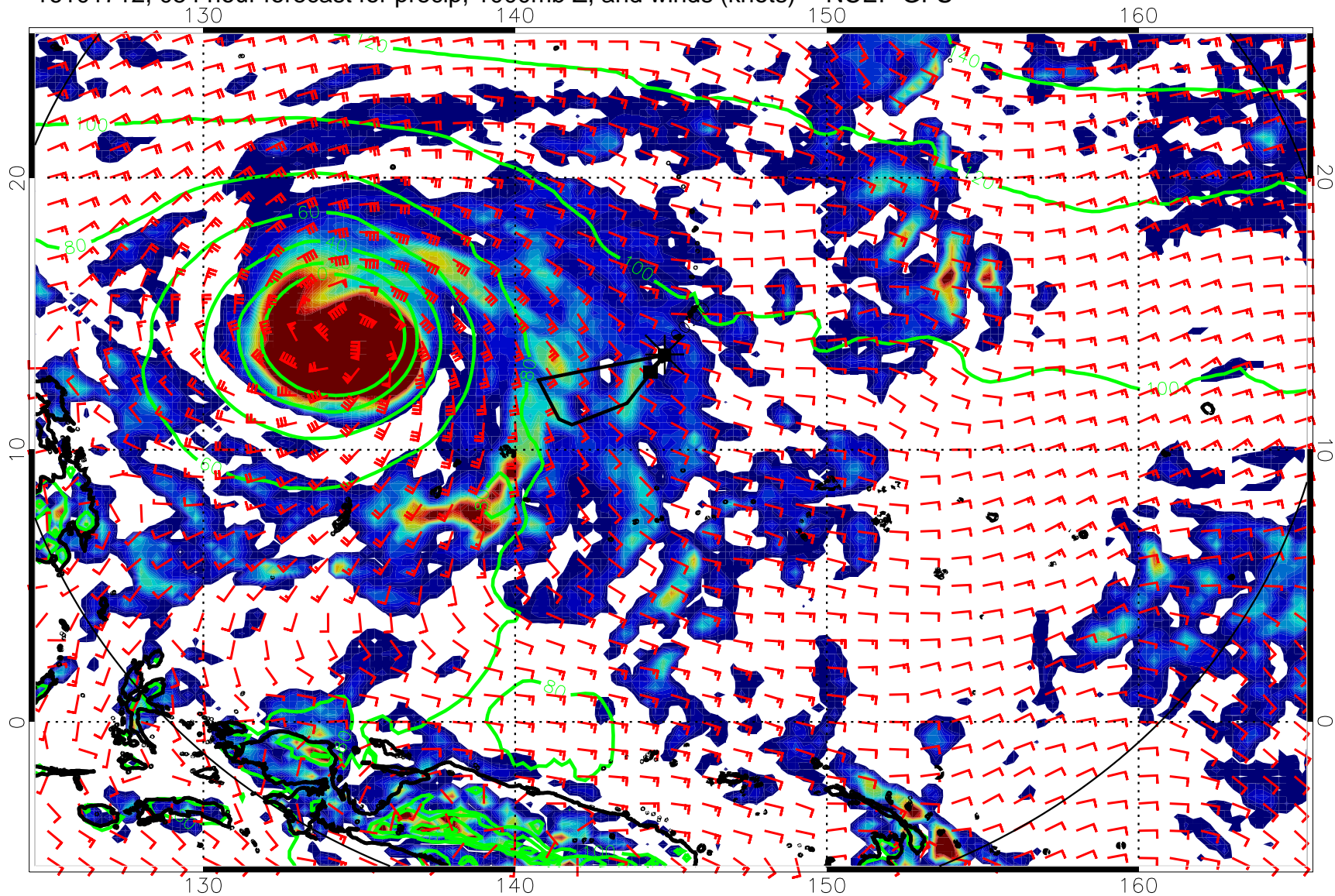


20 40 60 80
Precipitation, mm/day

16101706, 048 hour forecast for precip, 1000mb Z, and winds (knots) -- NCEP GFS

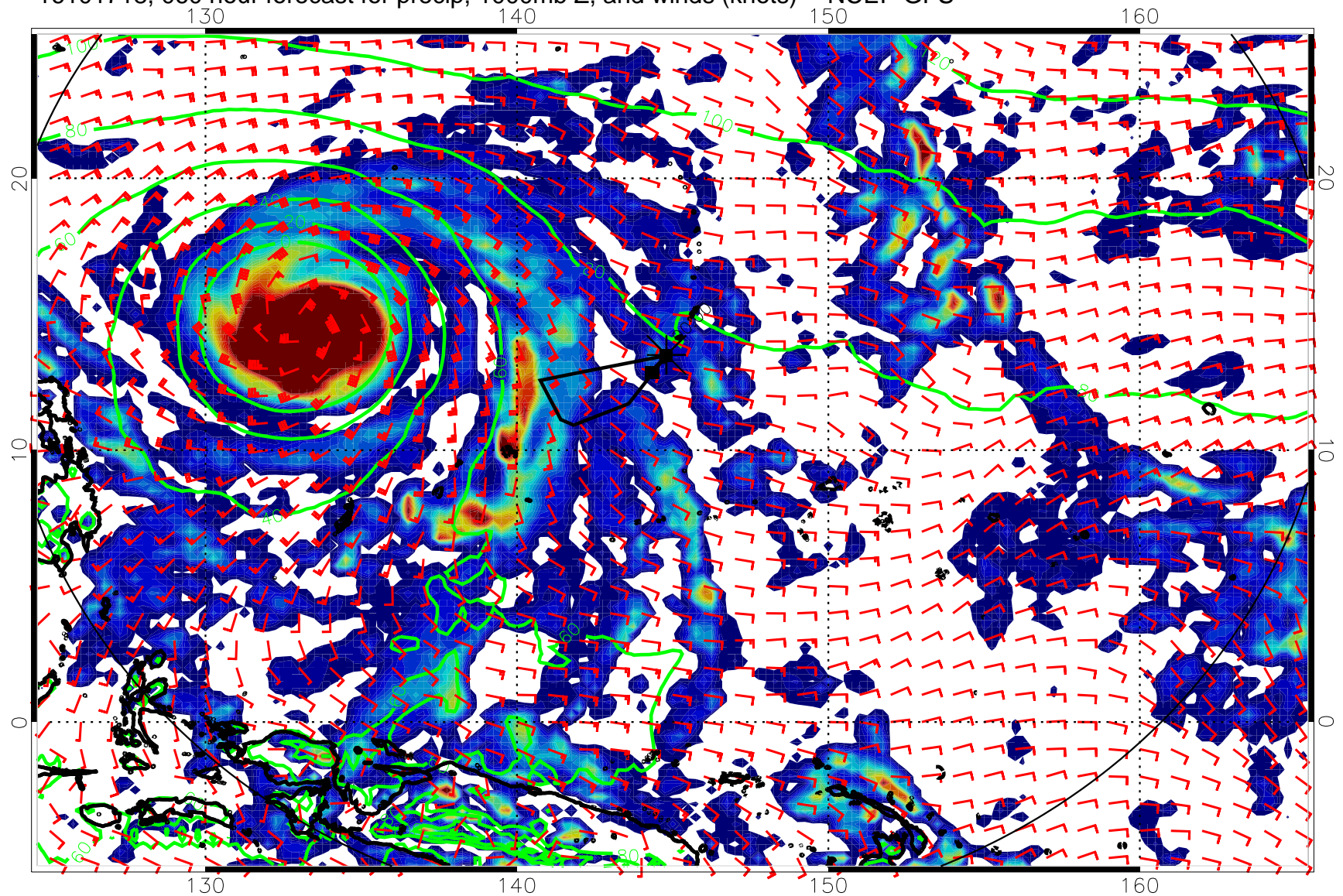


16101712, 054 hour forecast for precip, 1000mb Z, and winds (knots) -- NCEP GFS



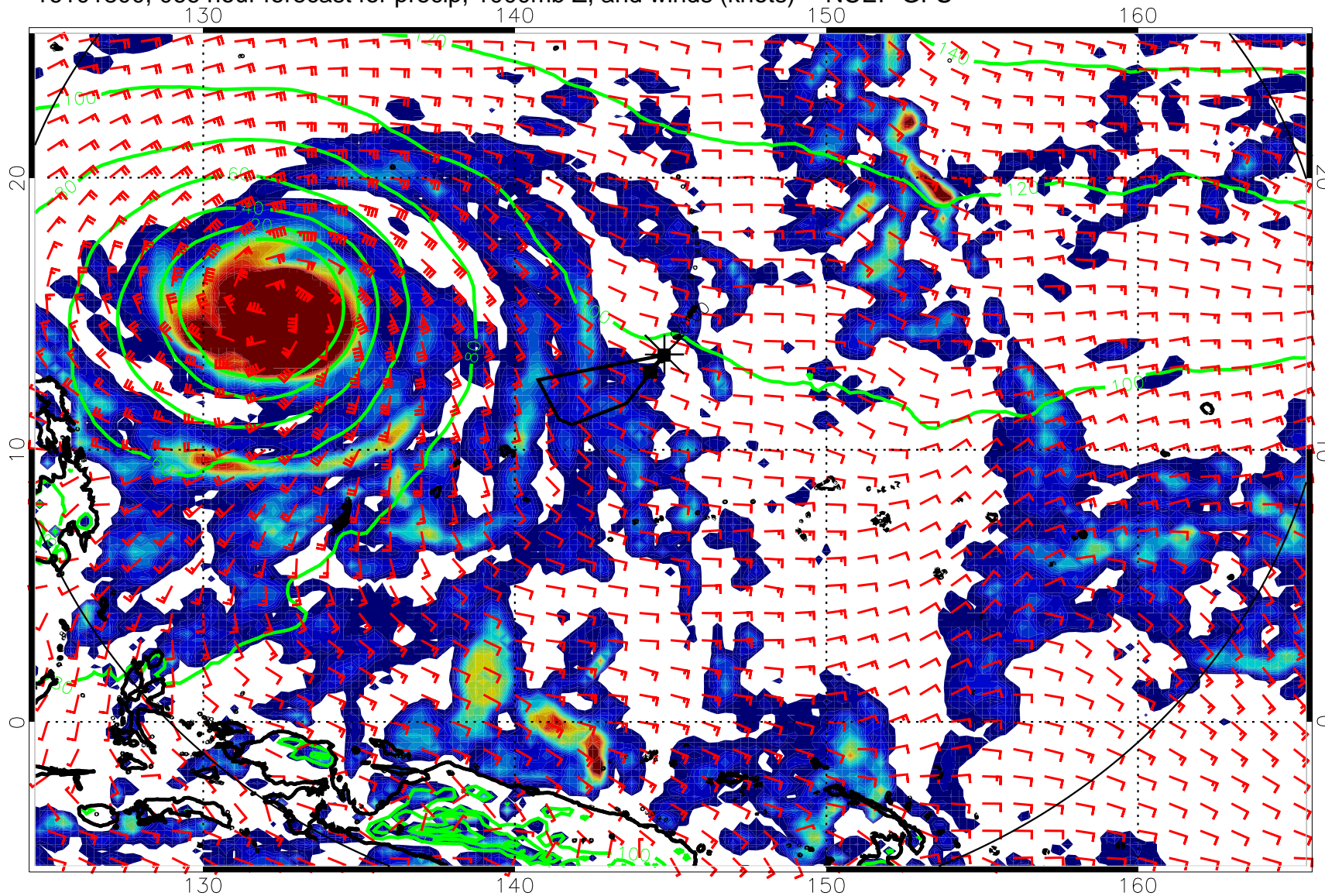
20 40 60 80
Precipitation, mm/day

16101718, 060 hour forecast for precip, 1000mb Z, and winds (knots) -- NCEP GFS



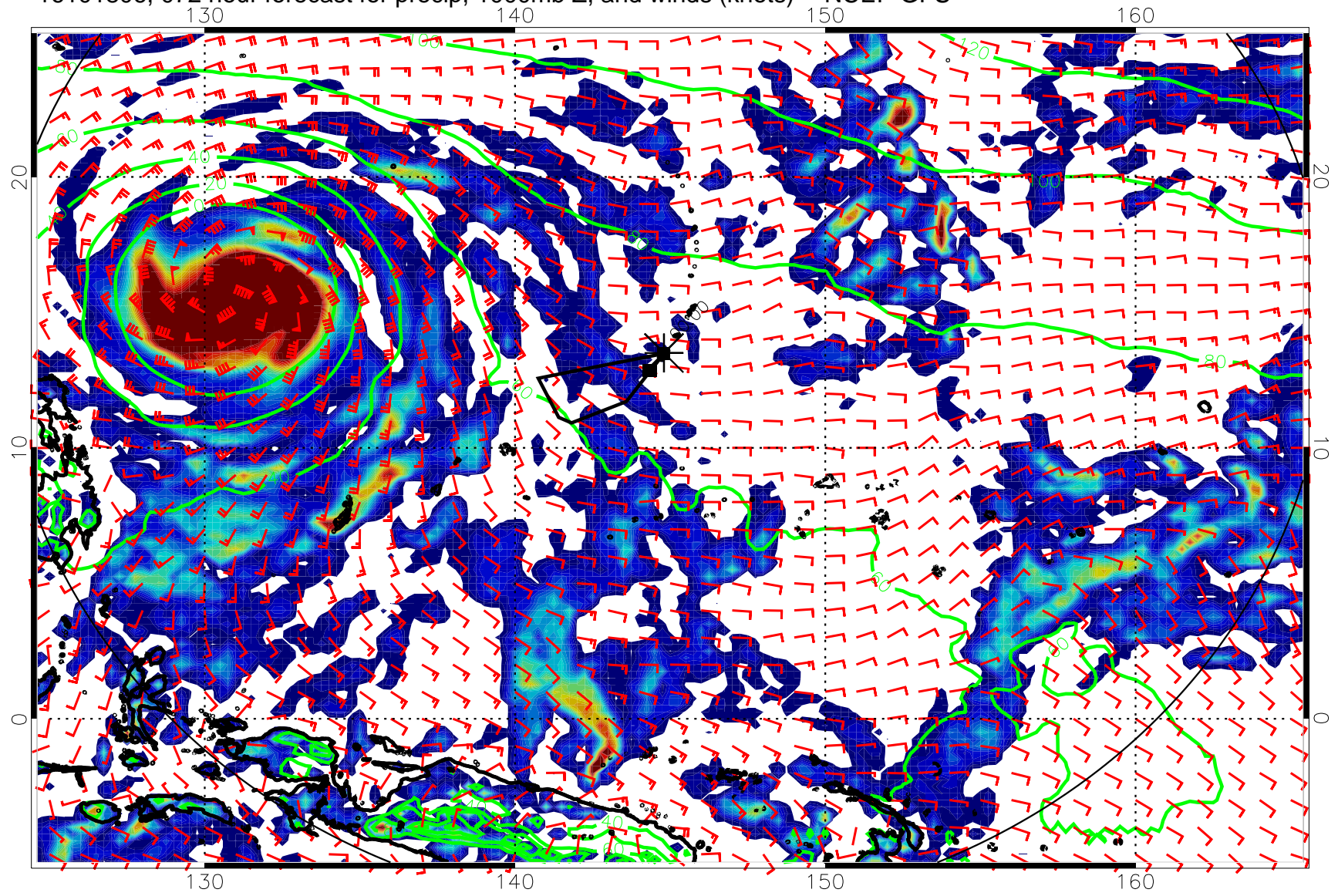
20 40 60 80
Precipitation, mm/day

16101800, 066 hour forecast for precip, 1000mb Z, and winds (knots) -- NCEP GFS



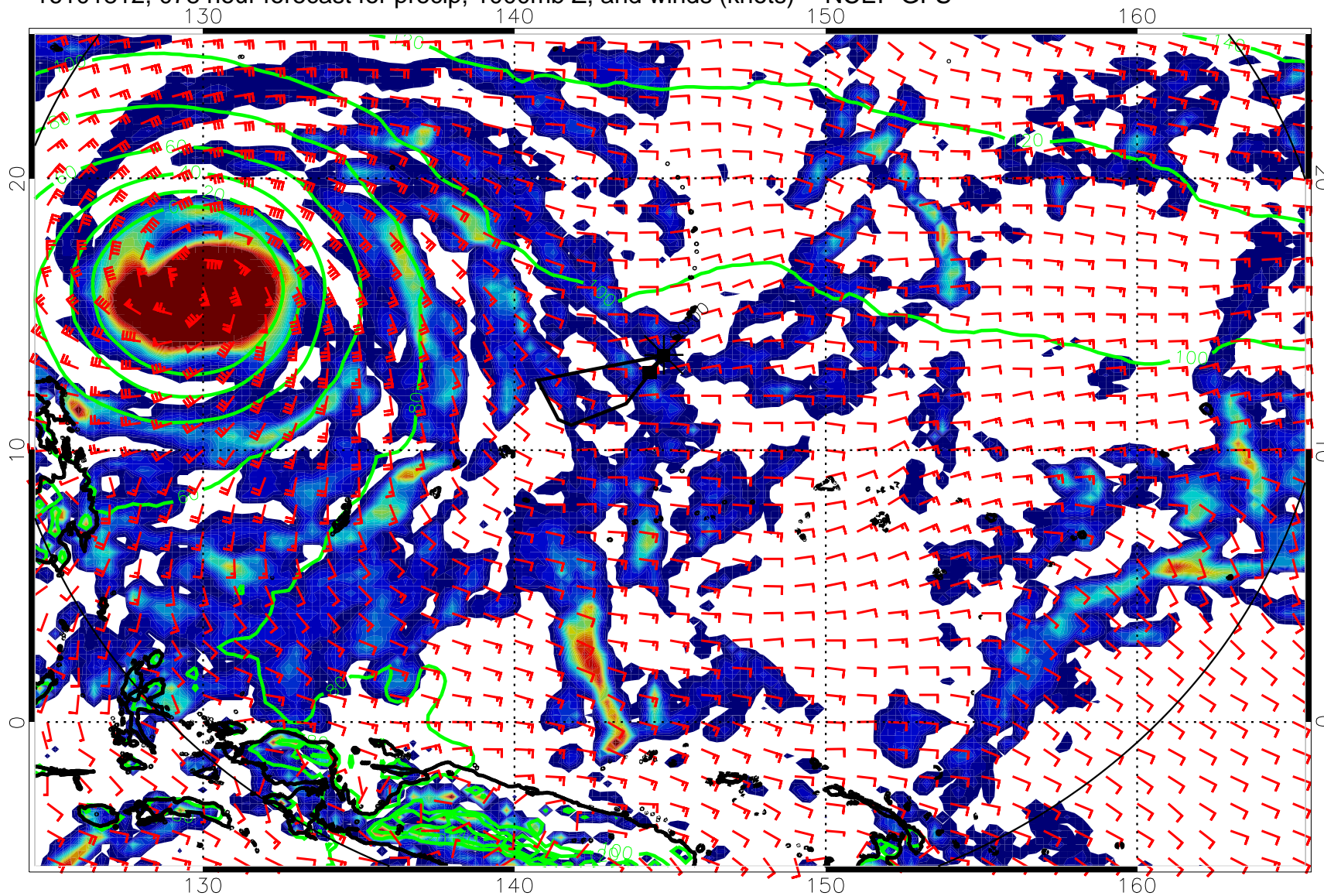
20 40 60 80
Precipitation, mm/day

16101806, 072 hour forecast for precip, 1000mb Z, and winds (knots) -- NCEP GFS



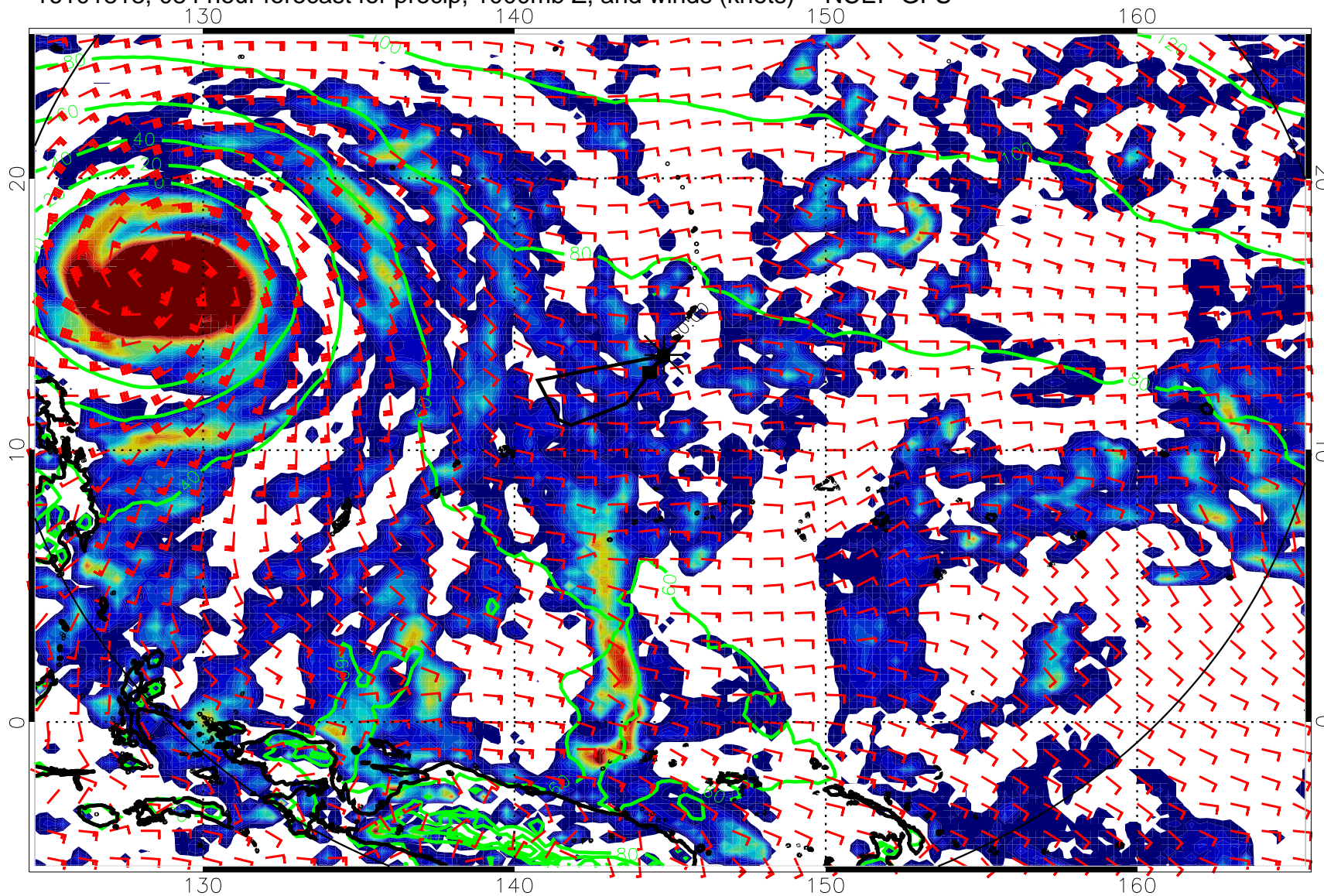
20 40 60 80
Precipitation, mm/day

16101812, 078 hour forecast for precip, 1000mb Z, and winds (knots) -- NCEP GFS



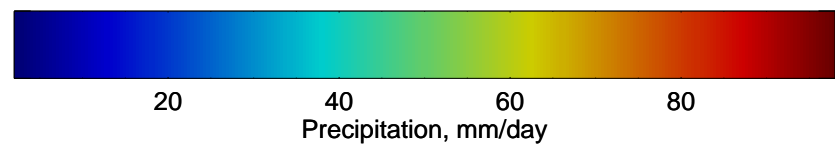
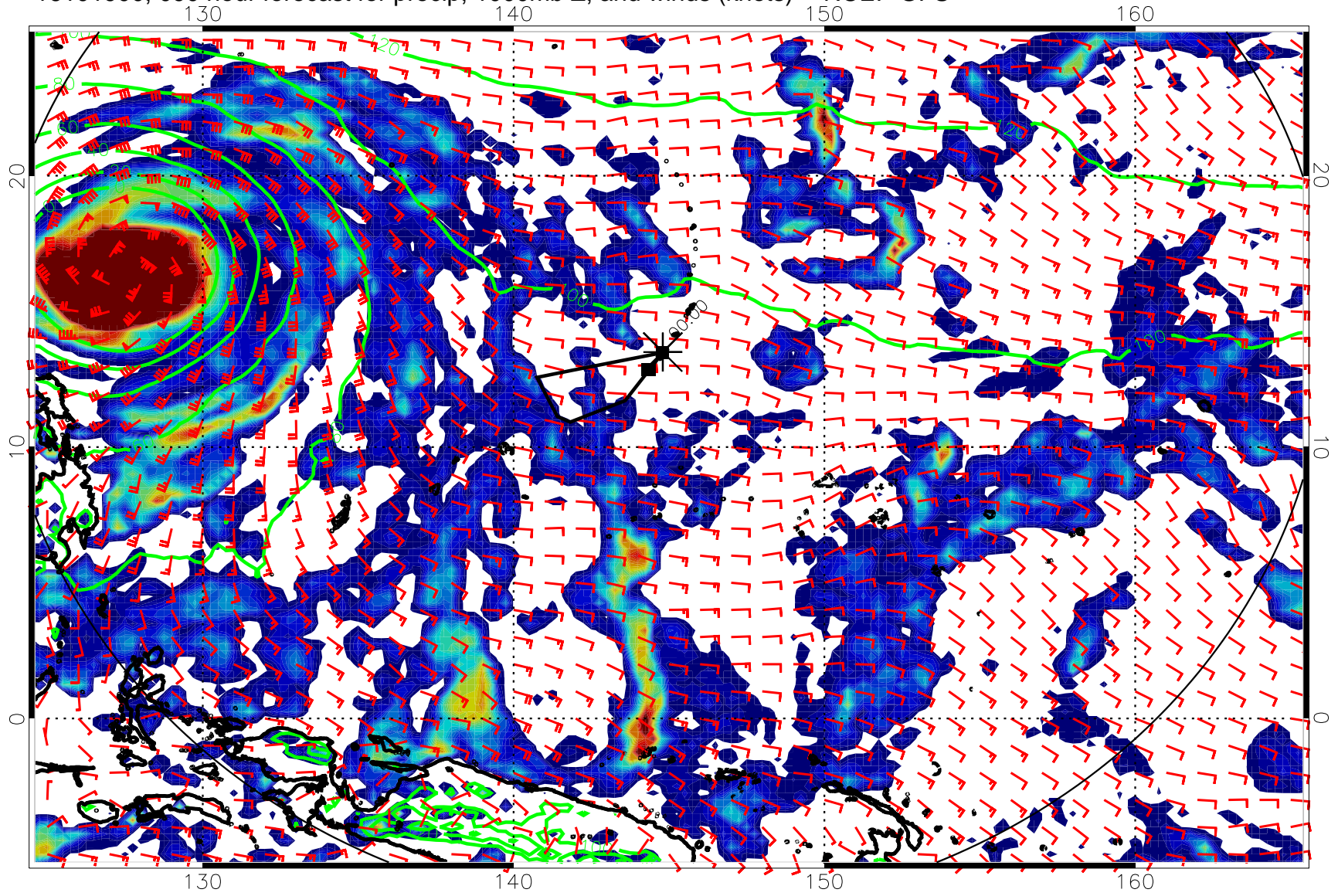
20 40 60 80
Precipitation, mm/day

16101818, 084 hour forecast for precip, 1000mb Z, and winds (knots) -- NCEP GFS

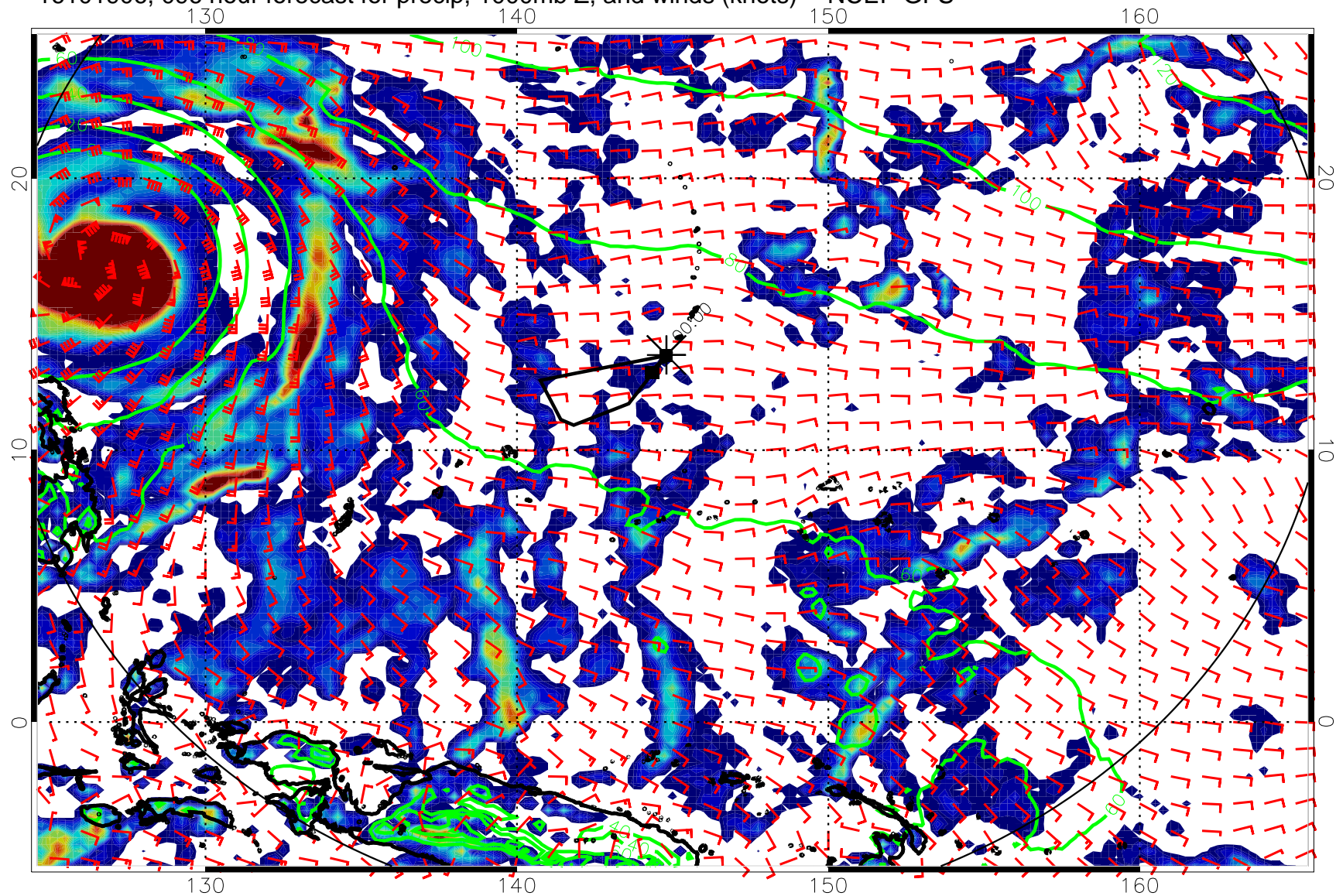


20 40 60 80
Precipitation, mm/day

16101900, 090 hour forecast for precip, 1000mb Z, and winds (knots) -- NCEP GFS

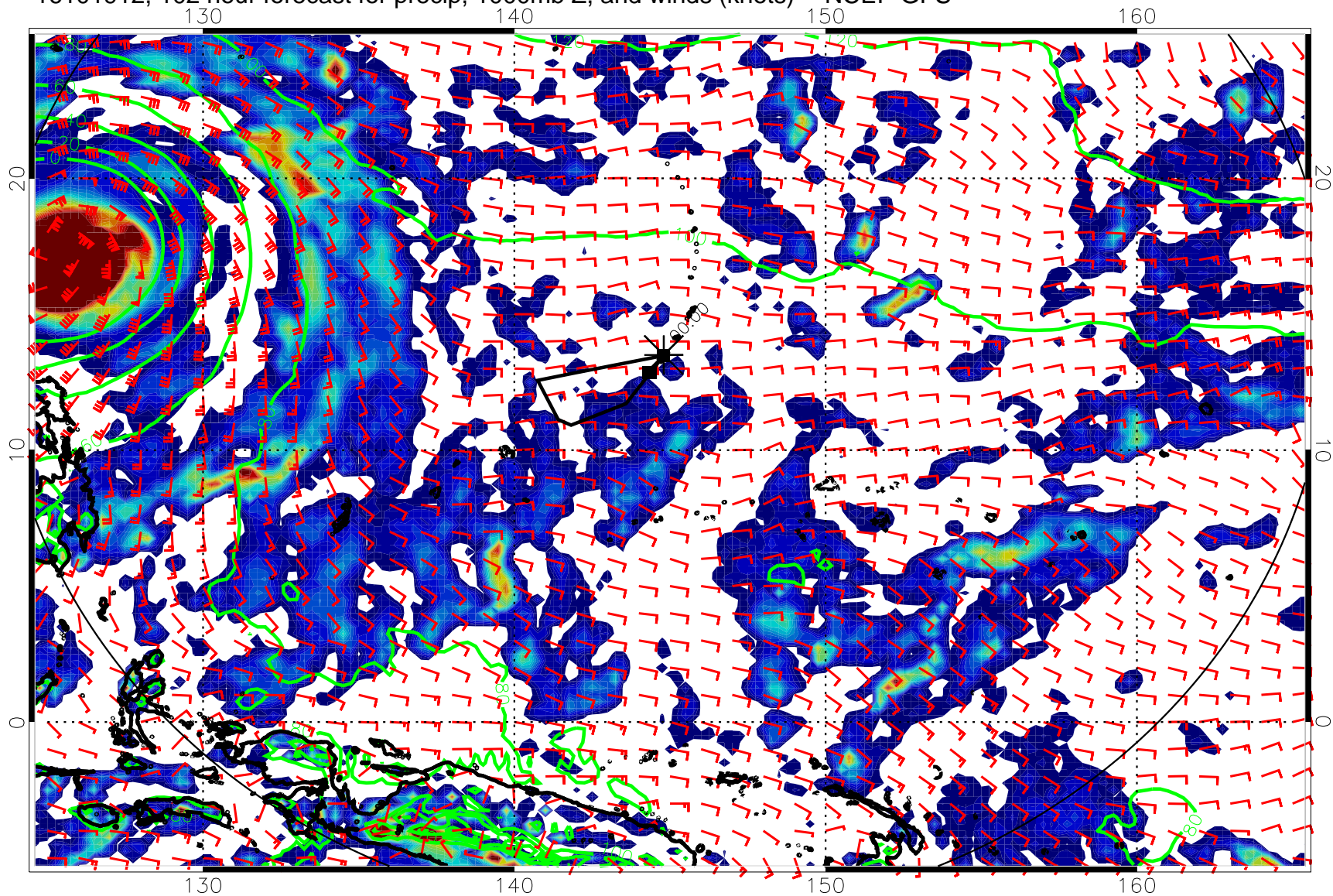


16101906, 096 hour forecast for precip, 1000mb Z, and winds (knots) -- NCEP GFS



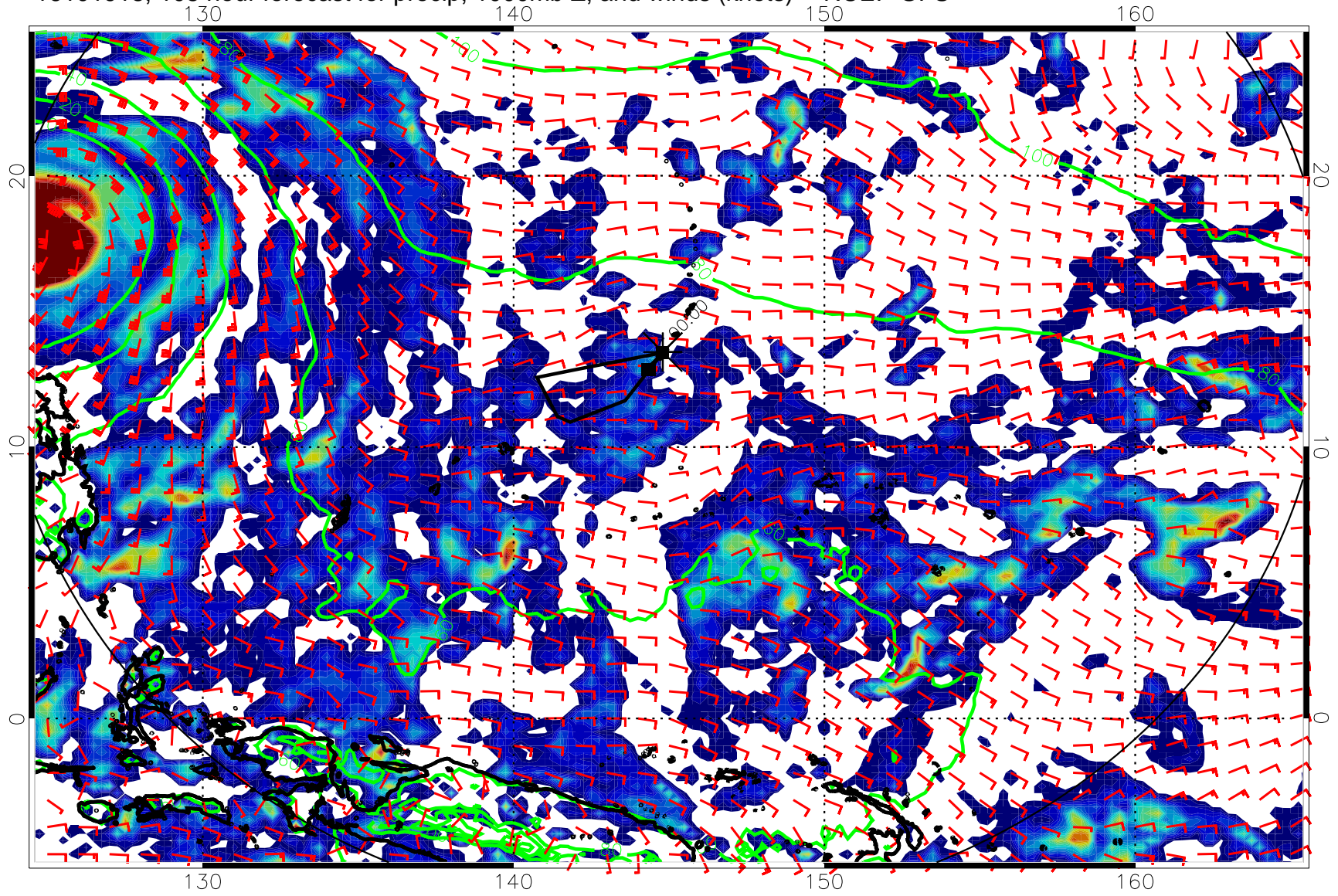
20 40 60 80
Precipitation, mm/day

16101912, 102 hour forecast for precip, 1000mb Z, and winds (knots) -- NCEP GFS



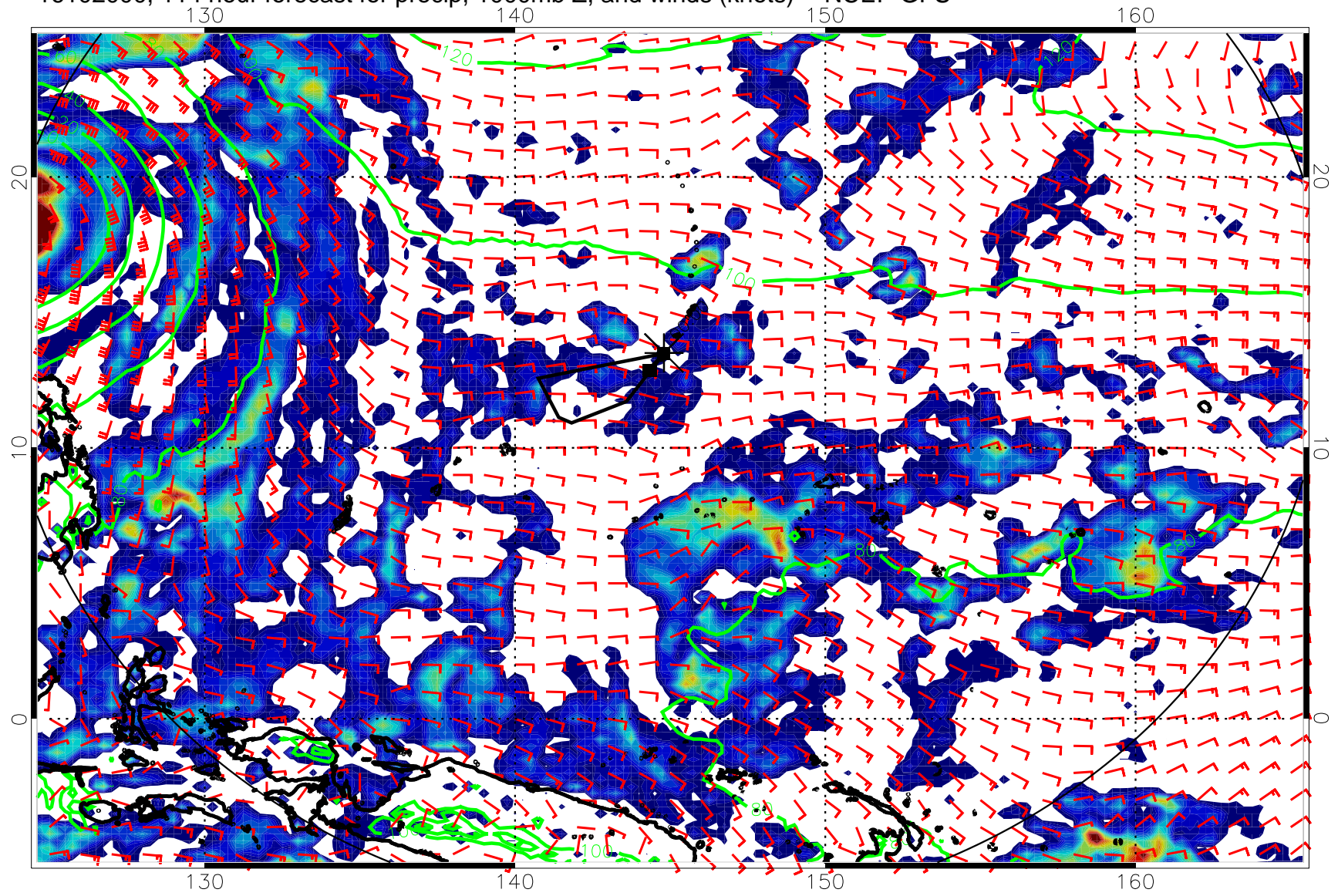
20 40 60 80
Precipitation, mm/day

16101918, 108 hour forecast for precip, 1000mb Z, and winds (knots) -- NCEP GFS



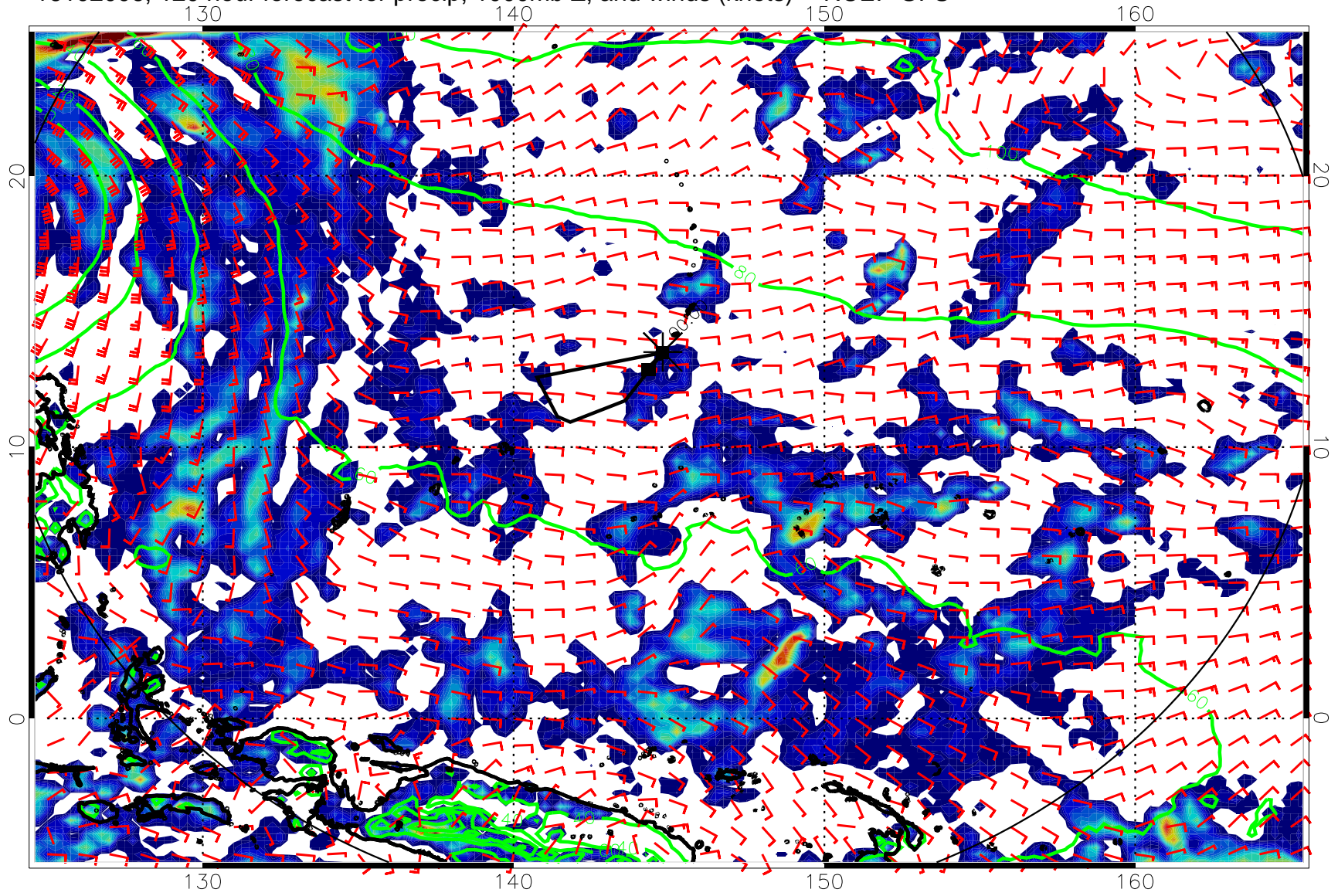
20 40 60 80
Precipitation, mm/day

16102000, 114 hour forecast for precip, 1000mb Z, and winds (knots) -- NCEP GFS



Precipitation, mm/day

16102006, 120 hour forecast for precip, 1000mb Z, and winds (knots) -- NCEP GFS



20 40 60 80
Precipitation, mm/day