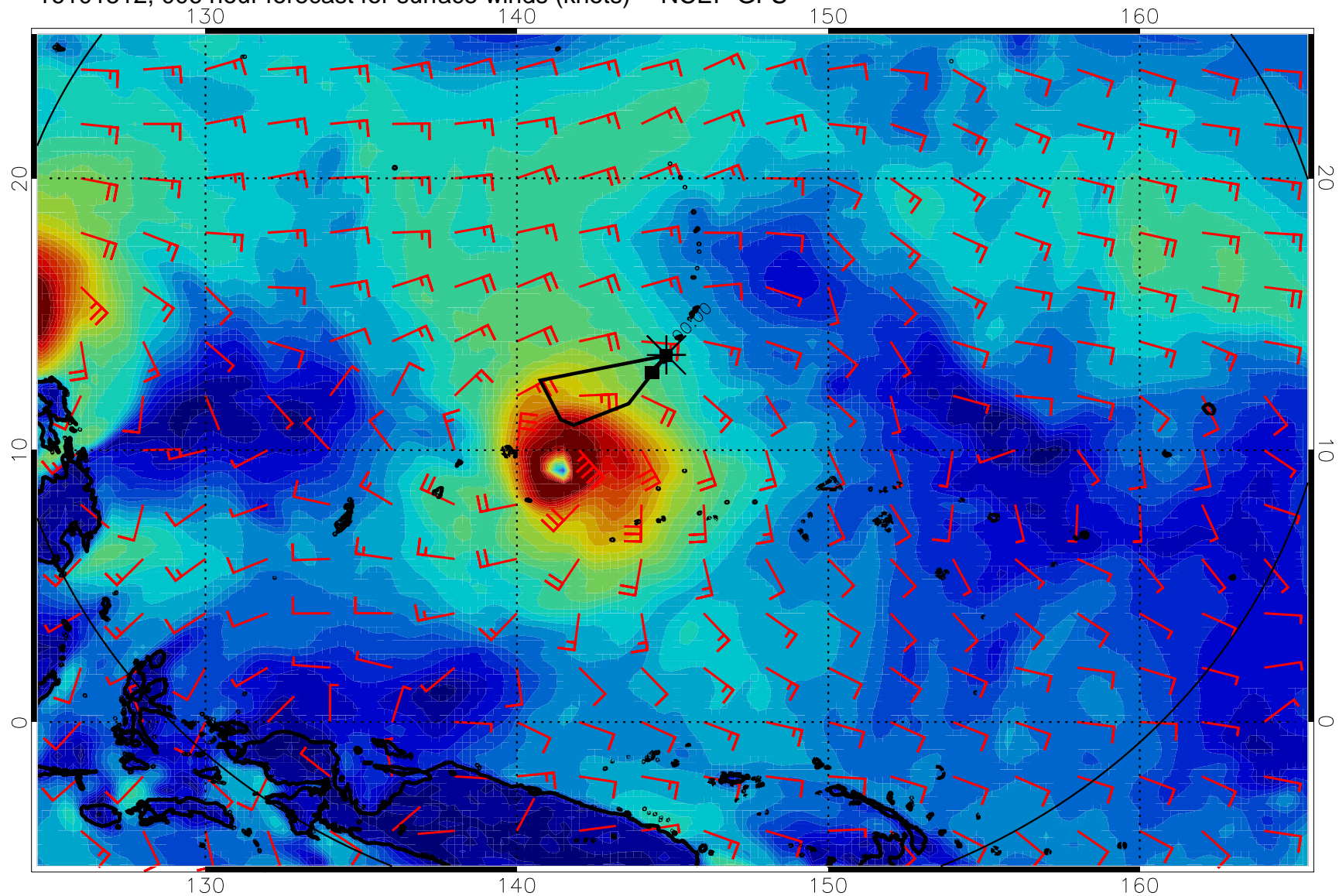
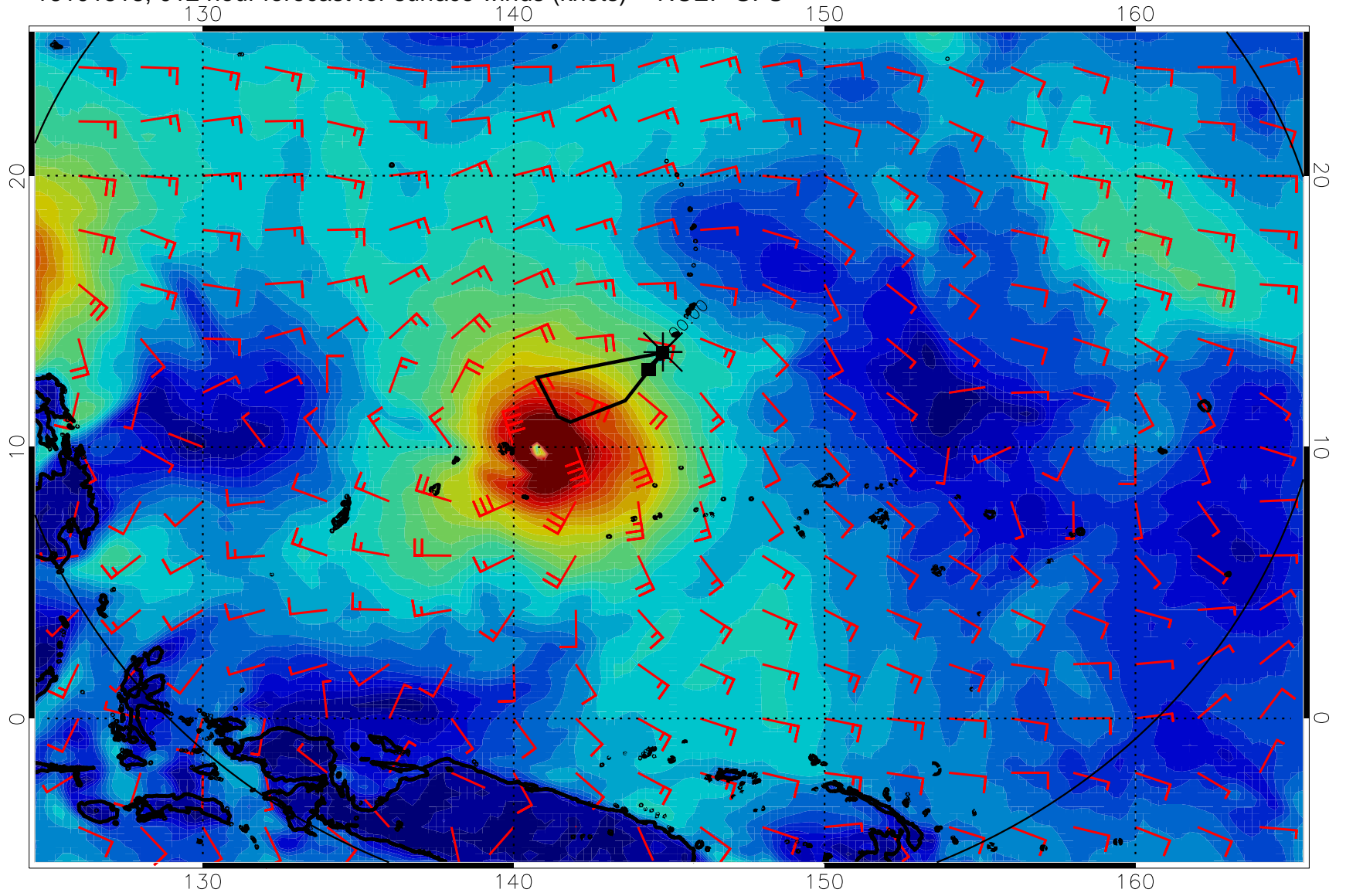


16101512, 006 hour forecast for surface winds (knots) -- NCEP GFS



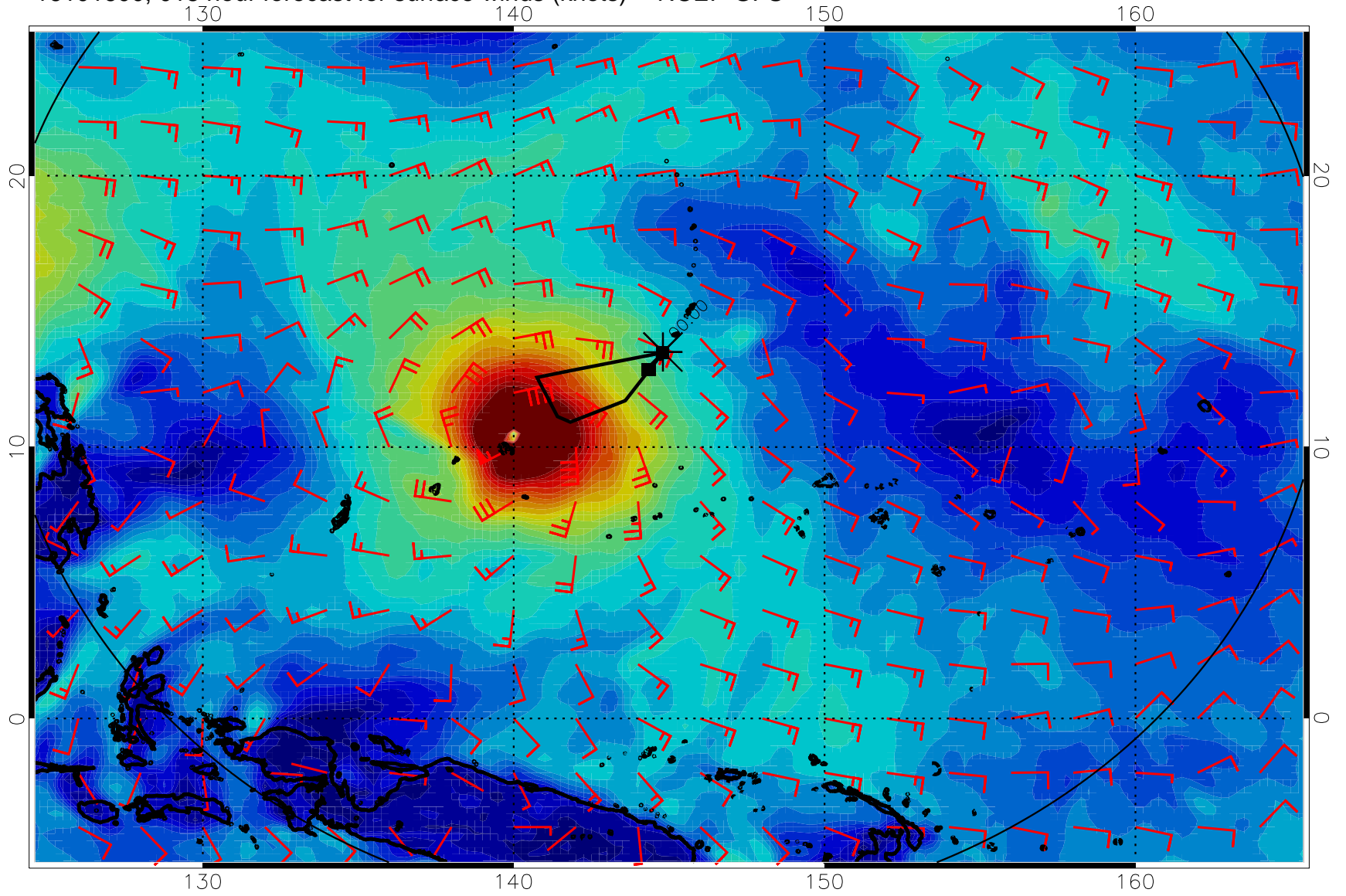
Surface Wind Speed, knots

16101518, 012 hour forecast for surface winds (knots) -- NCEP GFS



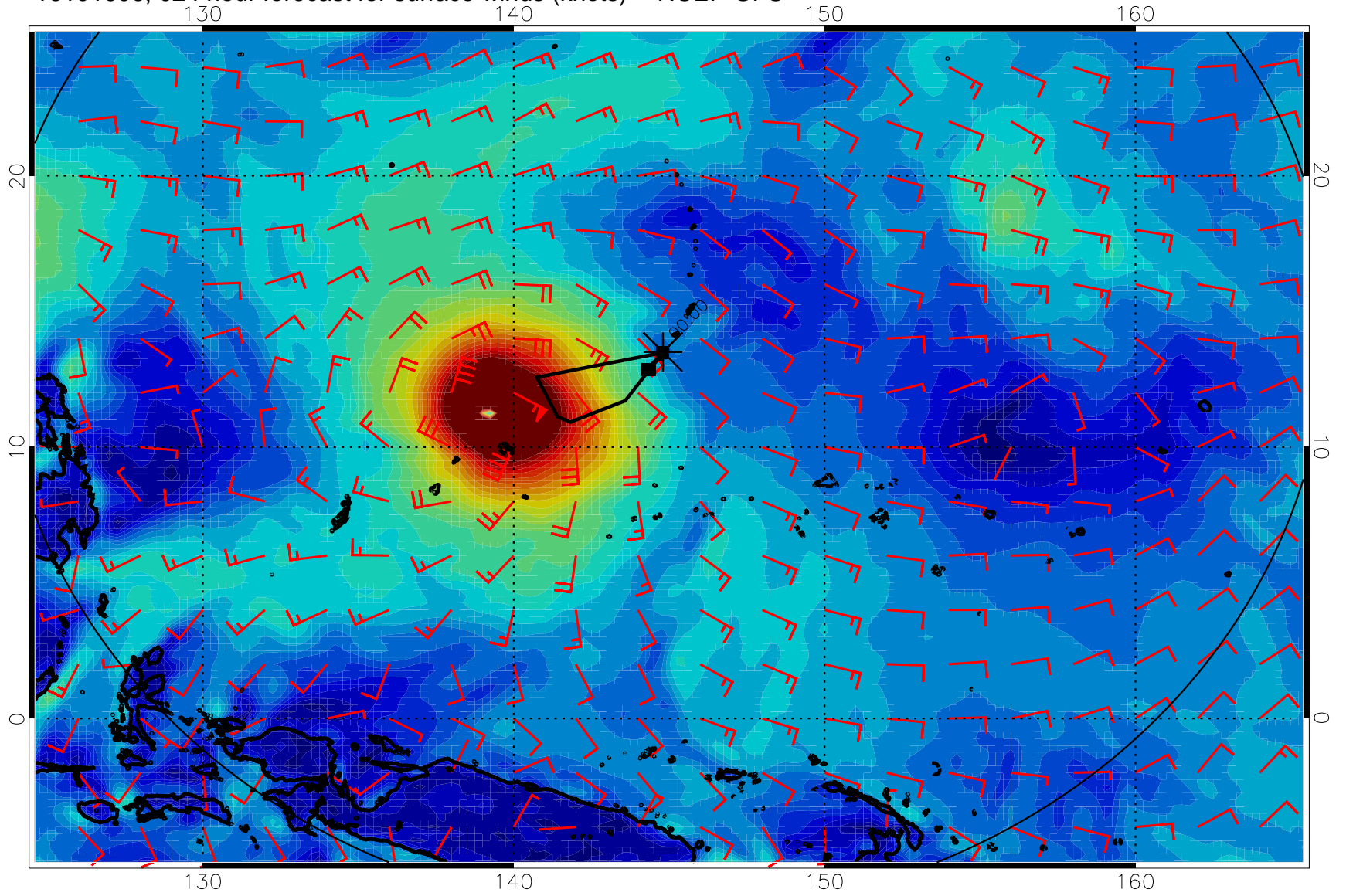
0 10 20 30  
Surface Wind Speed, knots

16101600, 018 hour forecast for surface winds (knots) -- NCEP GFS



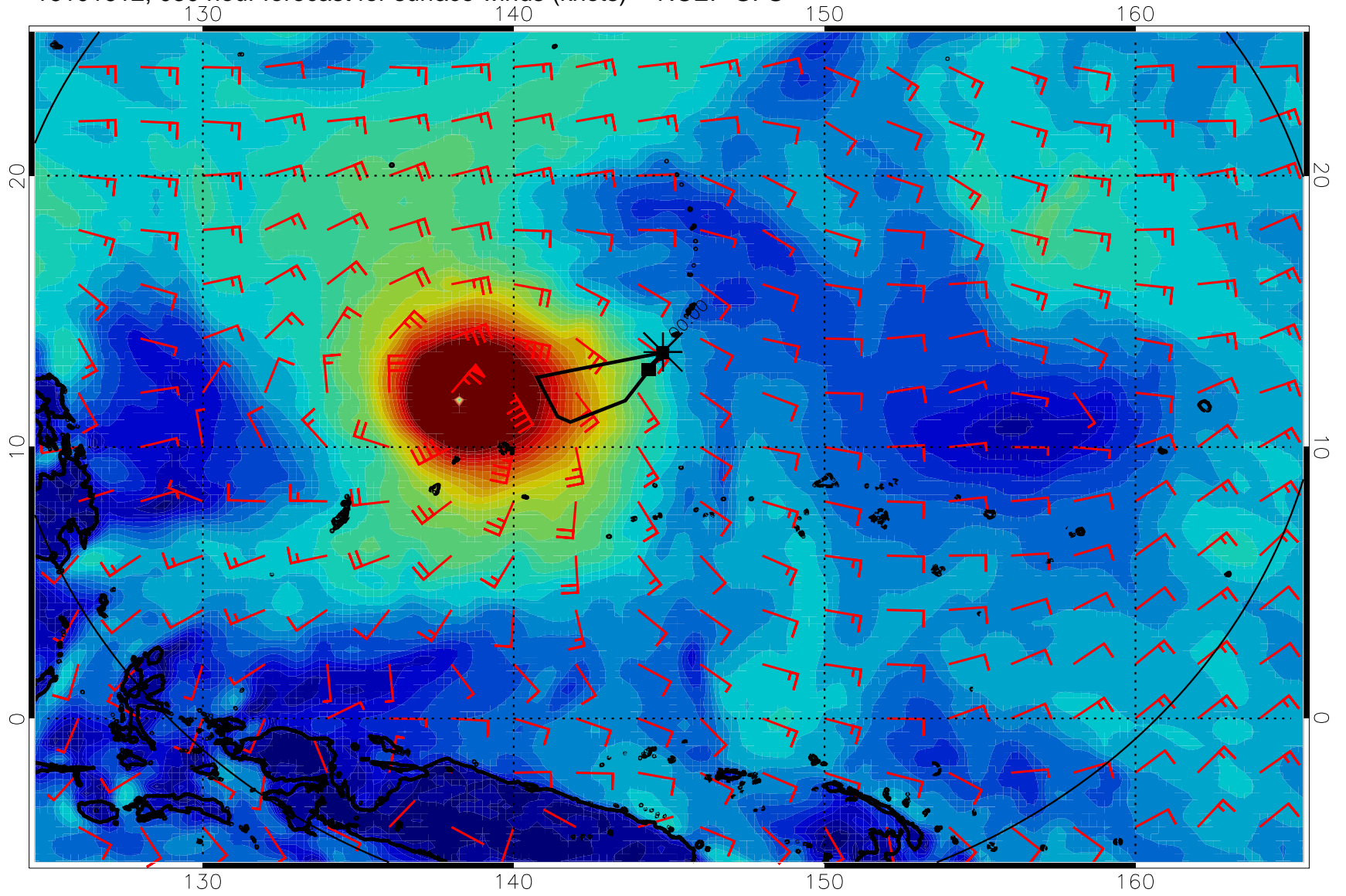
0      10      20      30  
Surface Wind Speed, knots

16101606, 024 hour forecast for surface winds (knots) -- NCEP GFS



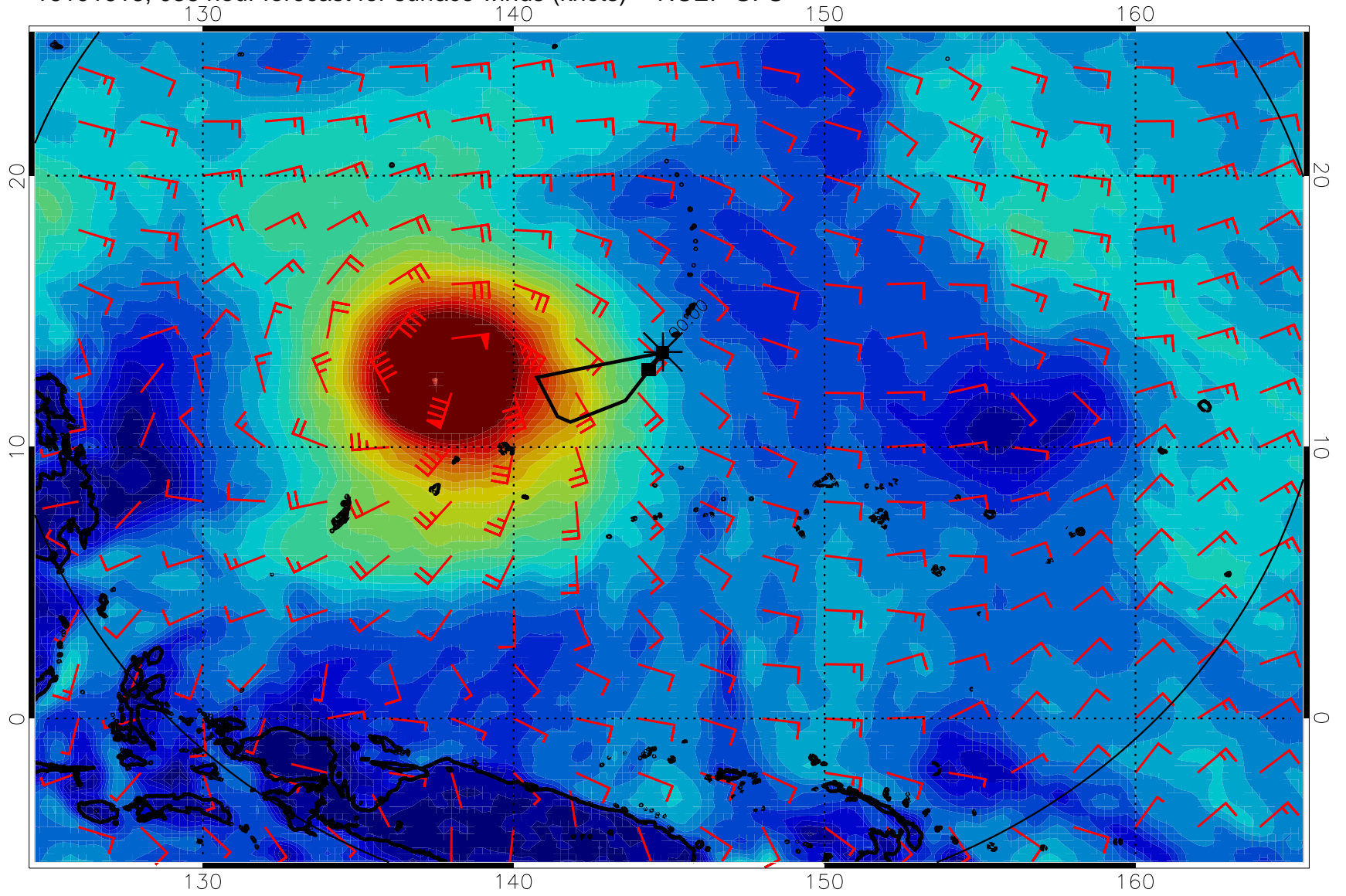
0 10 20 30  
Surface Wind Speed, knots

16101612, 030 hour forecast for surface winds (knots) -- NCEP GFS



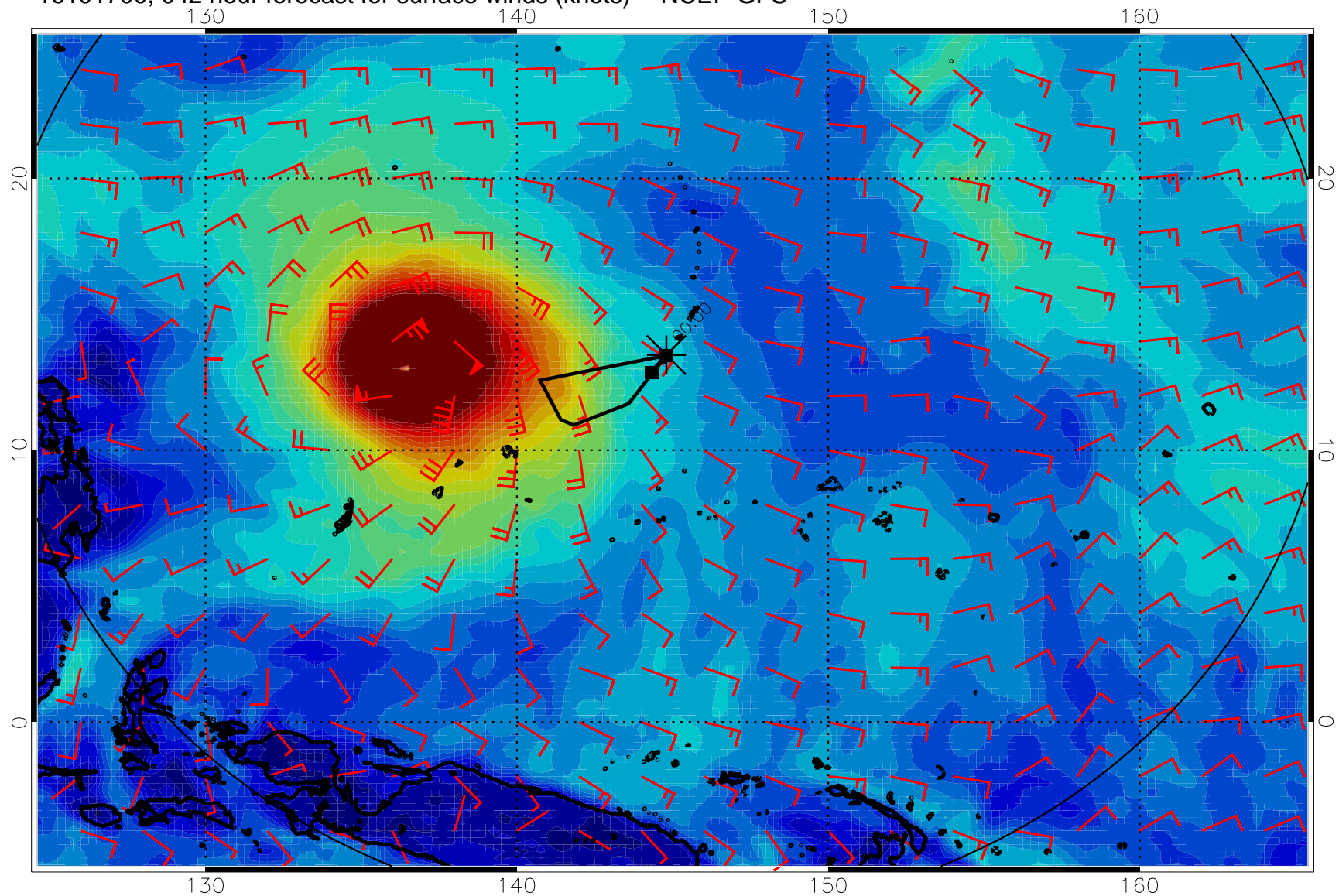
0 10 20 30  
Surface Wind Speed, knots

16101618, 036 hour forecast for surface winds (knots) -- NCEP GFS



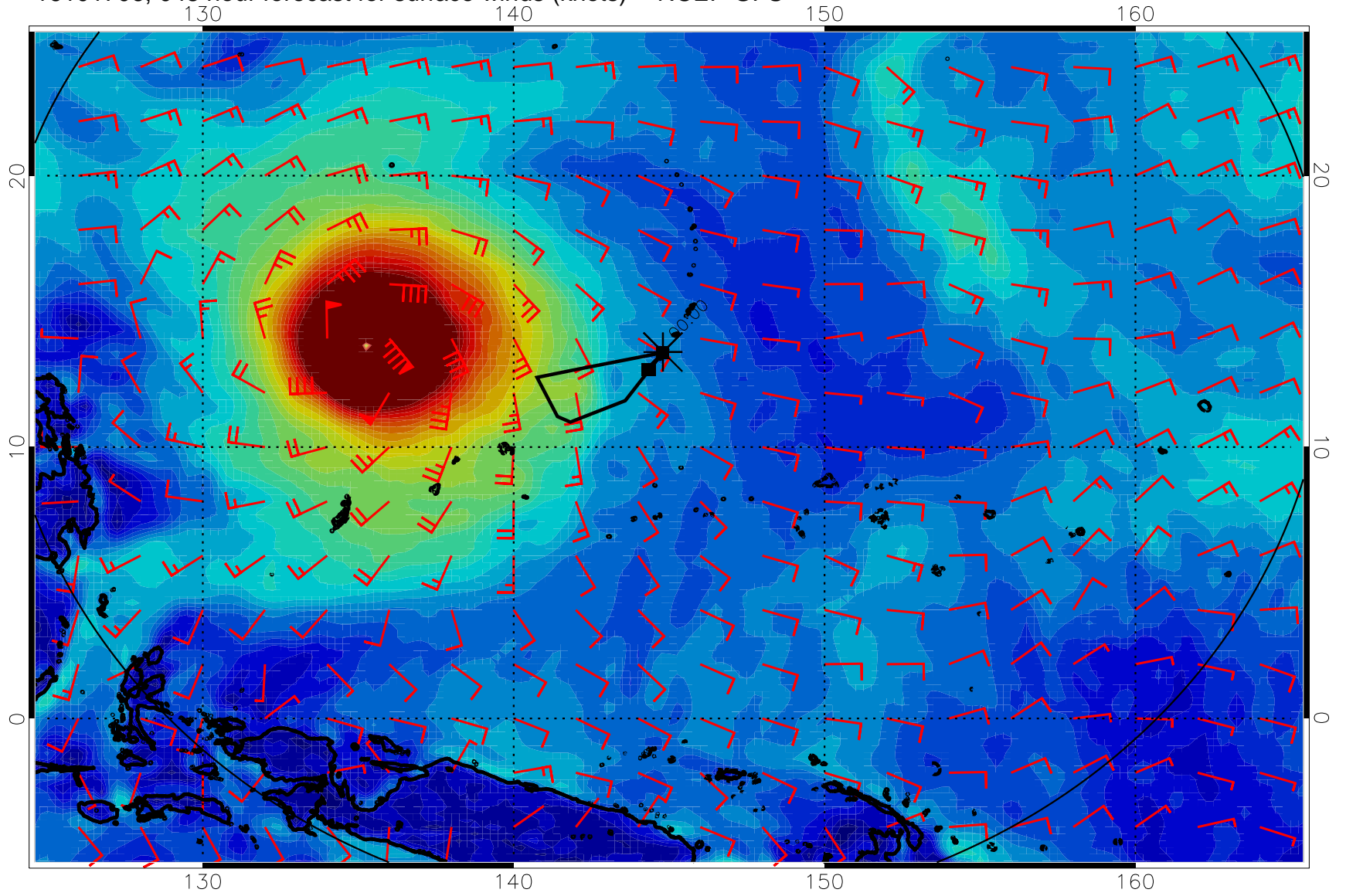
Surface Wind Speed, knots

16101700, 042 hour forecast for surface winds (knots) -- NCEP GFS



0 10 20 30  
Surface Wind Speed, knots

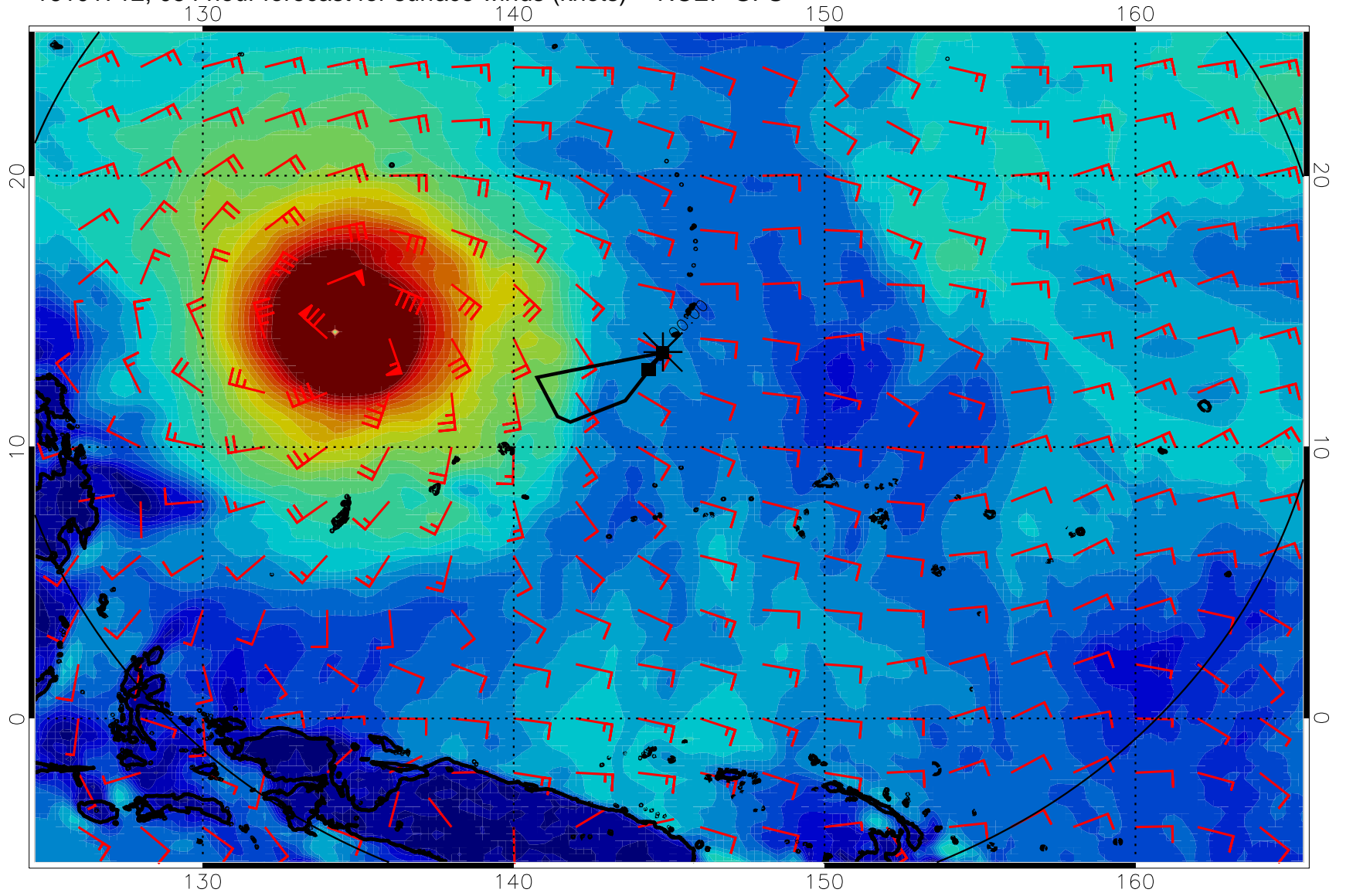
16101706, 048 hour forecast for surface winds (knots) -- NCEP GFS



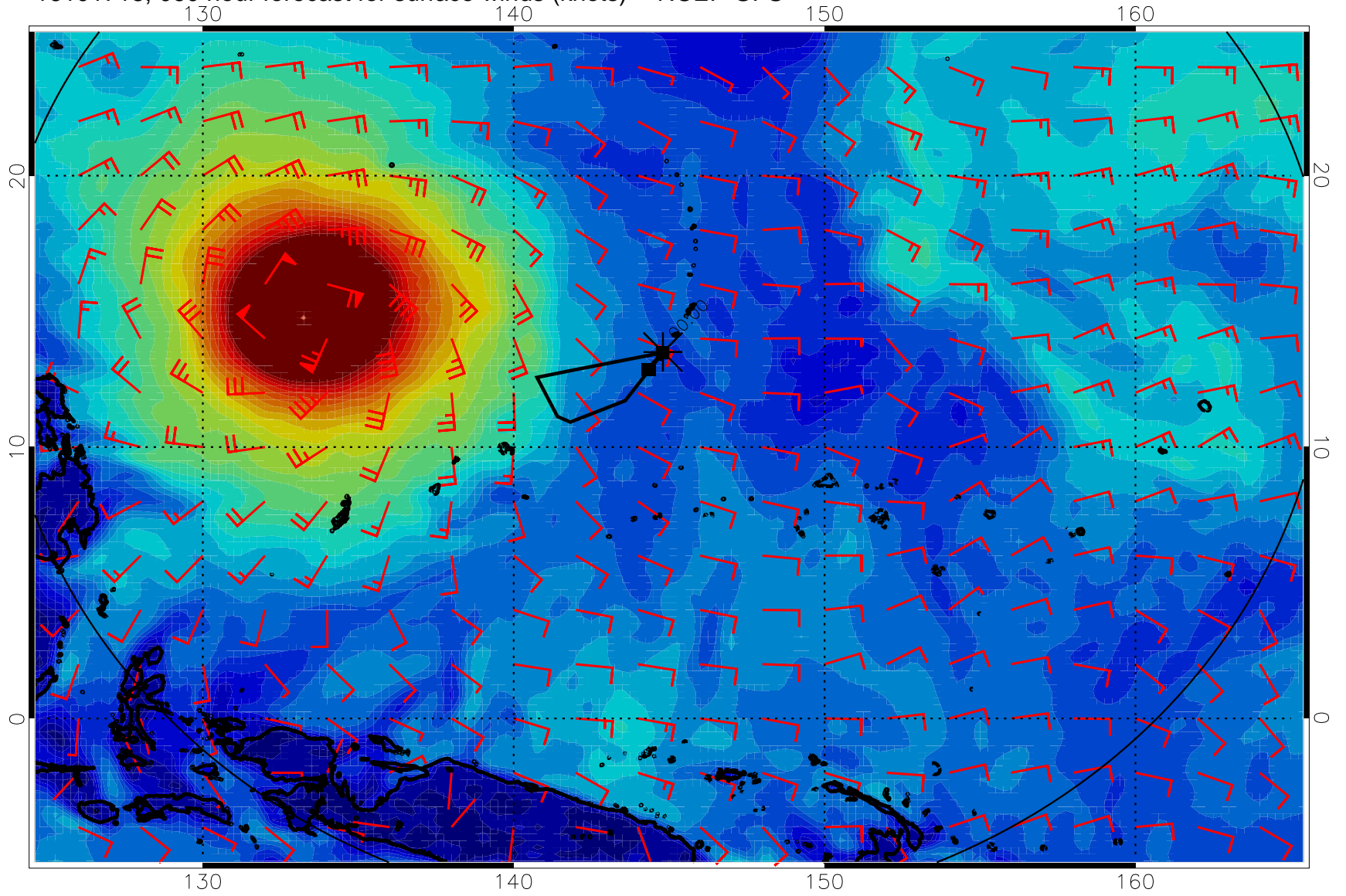
0      10      20      30  
Surface Wind Speed, knots



16101712, 054 hour forecast for surface winds (knots) -- NCEP GFS

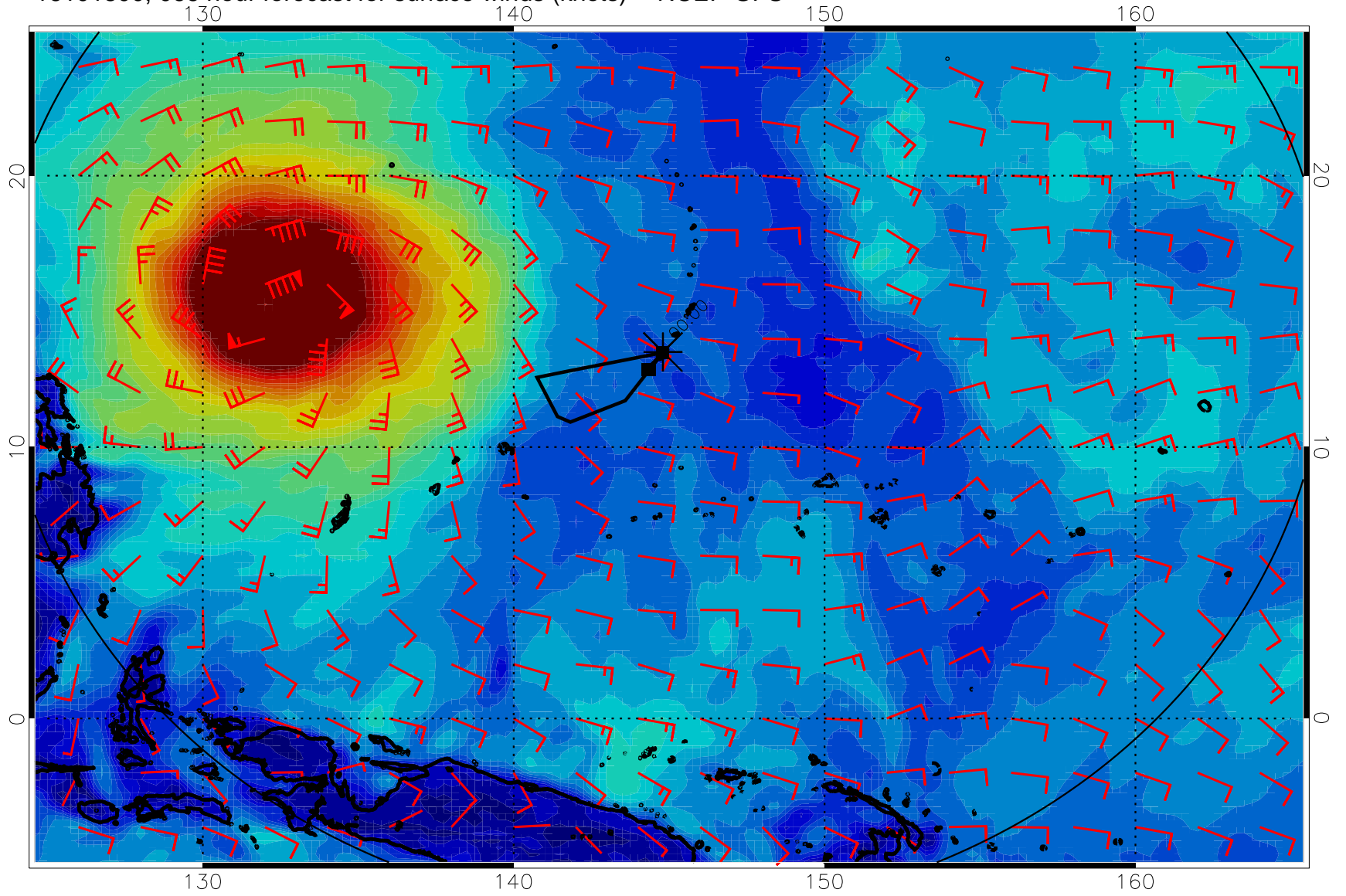


16101718, 060 hour forecast for surface winds (knots) -- NCEP GFS



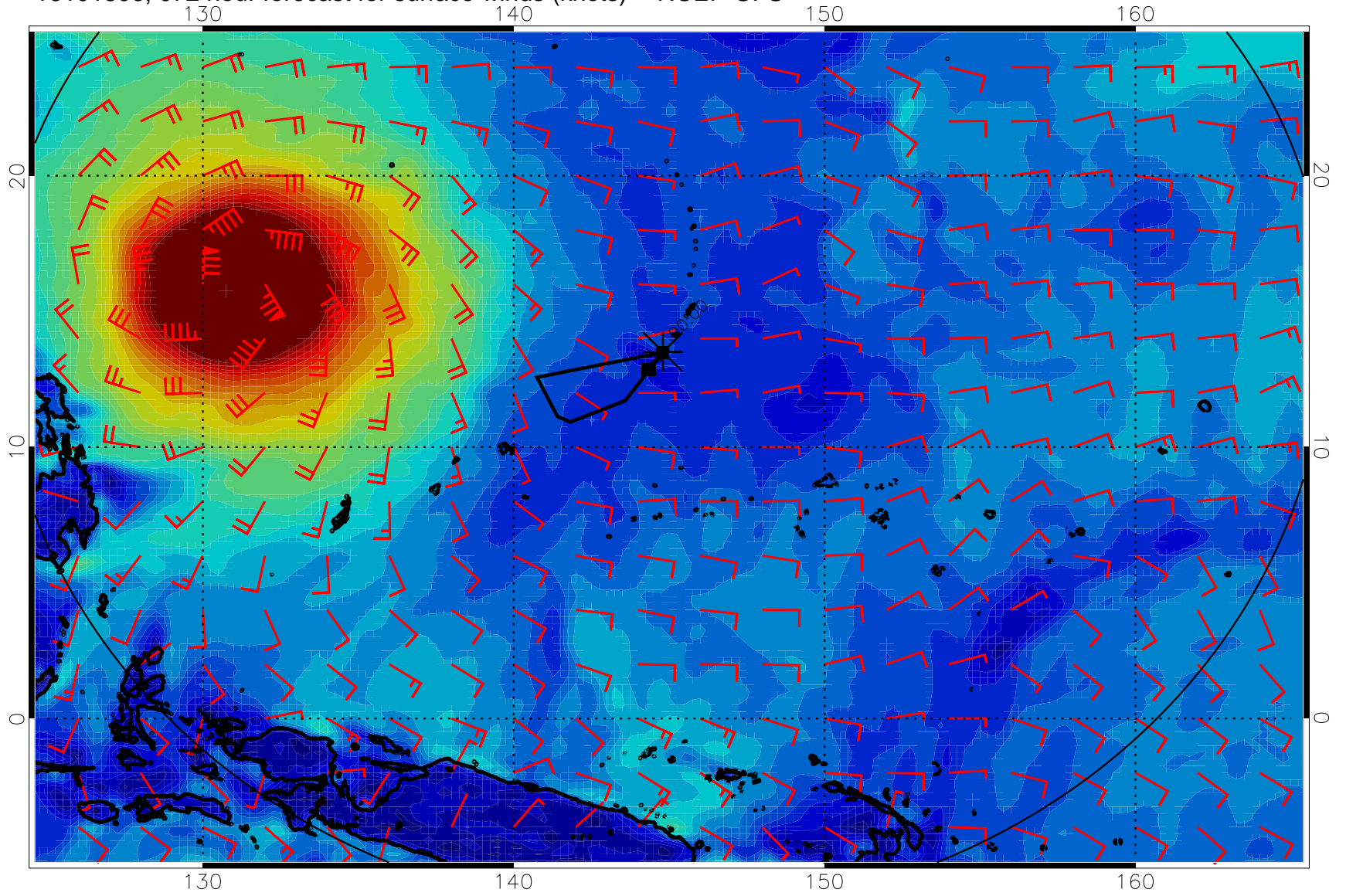
0 10 20 30  
Surface Wind Speed, knots

16101800, 066 hour forecast for surface winds (knots) -- NCEP GFS



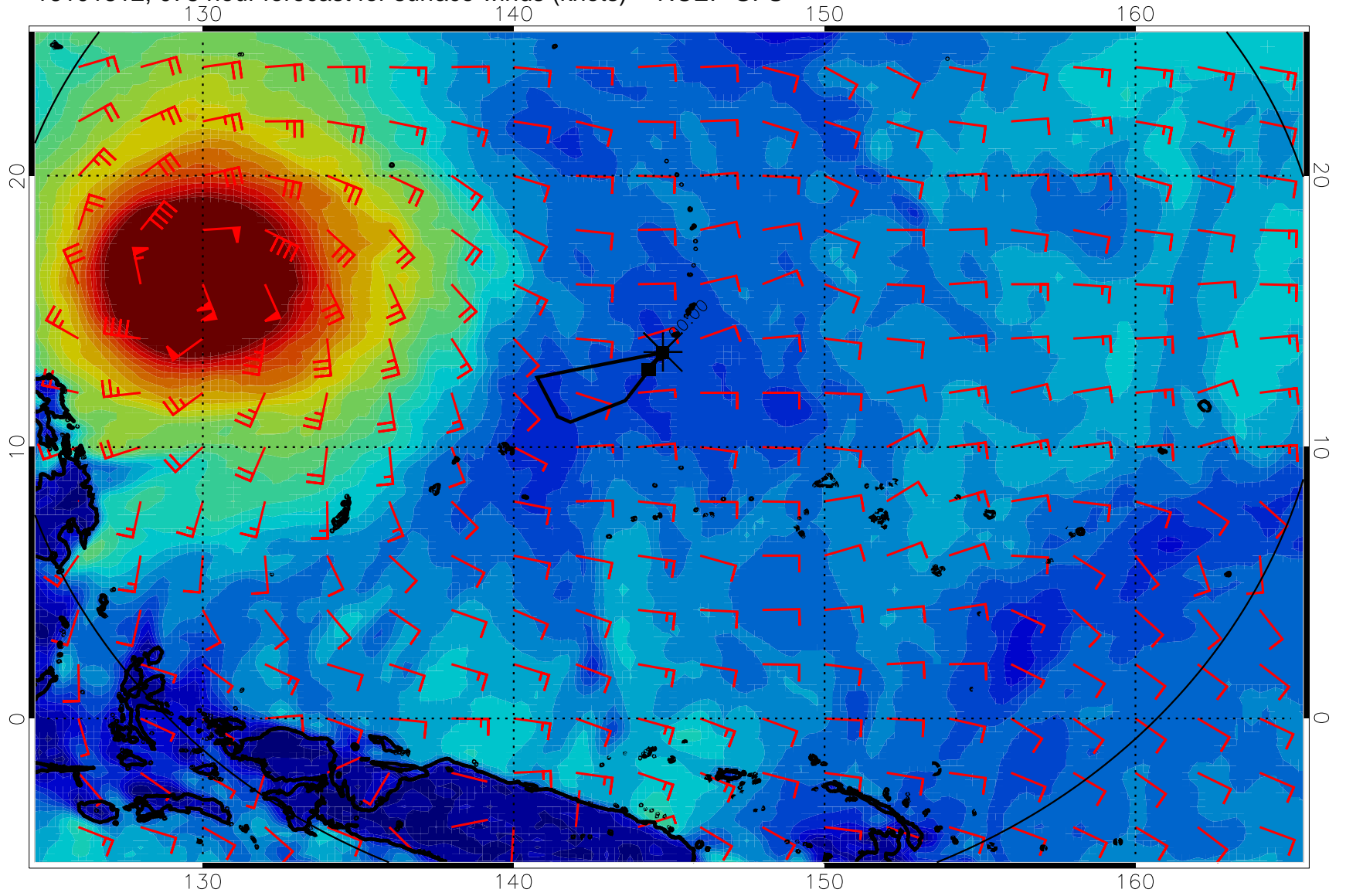
0      10      20      30  
Surface Wind Speed, knots

16101806, 072 hour forecast for surface winds (knots) -- NCEP GFS



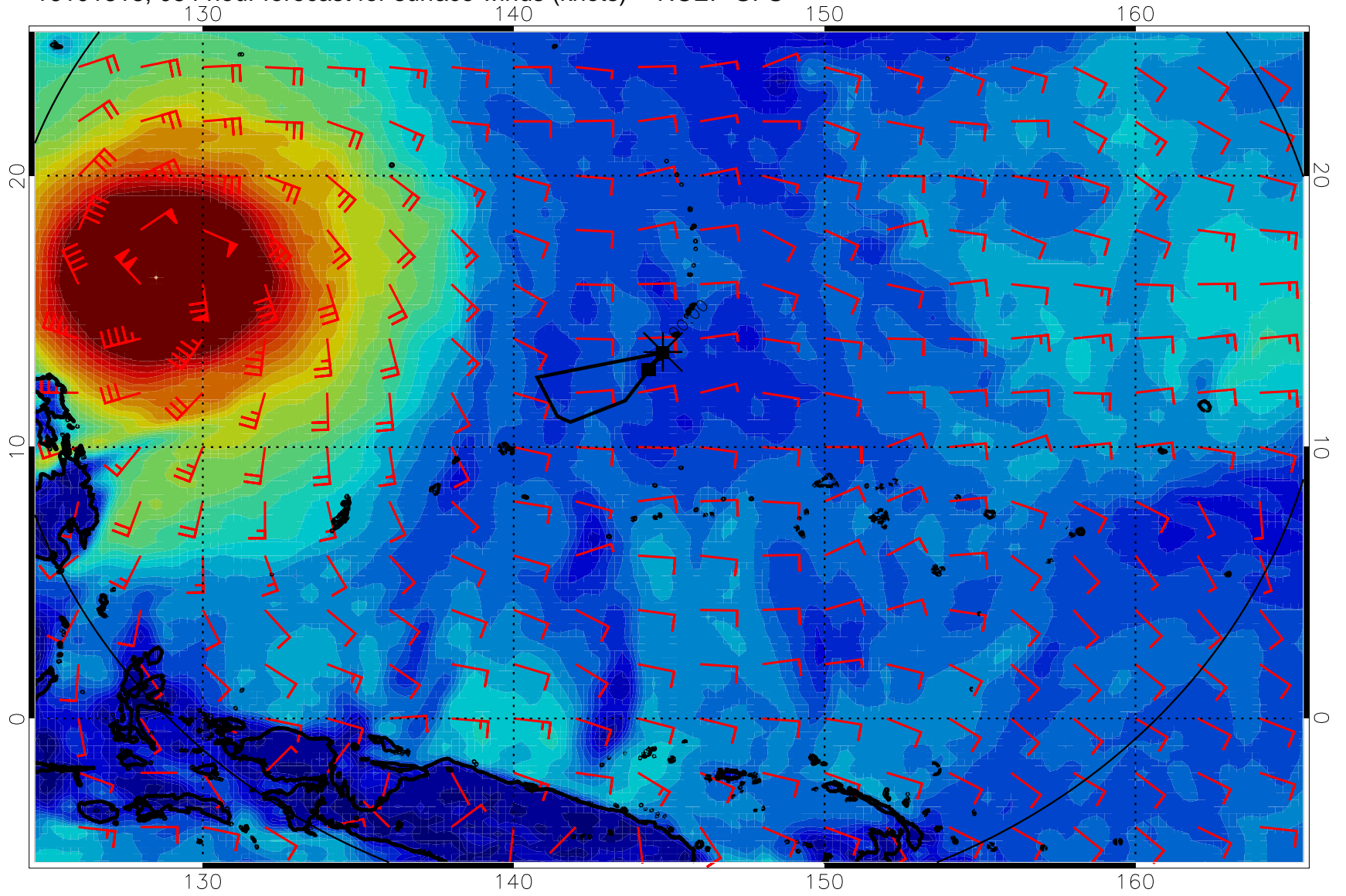
0      10      20      30  
Surface Wind Speed, knots

16101812, 078 hour forecast for surface winds (knots) -- NCEP GFS



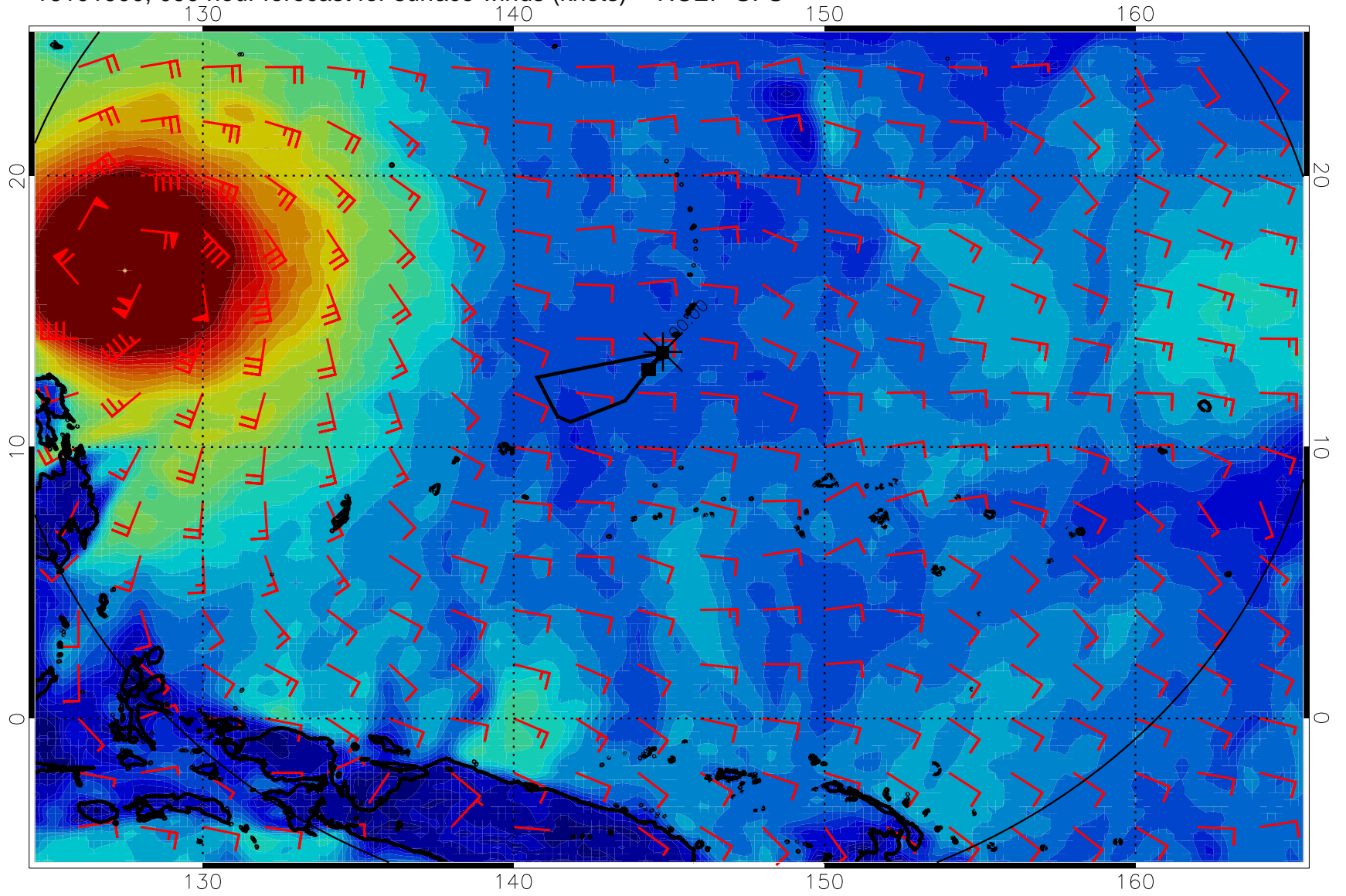
0 10 20 30  
Surface Wind Speed, knots

16101818, 084 hour forecast for surface winds (knots) -- NCEP GFS



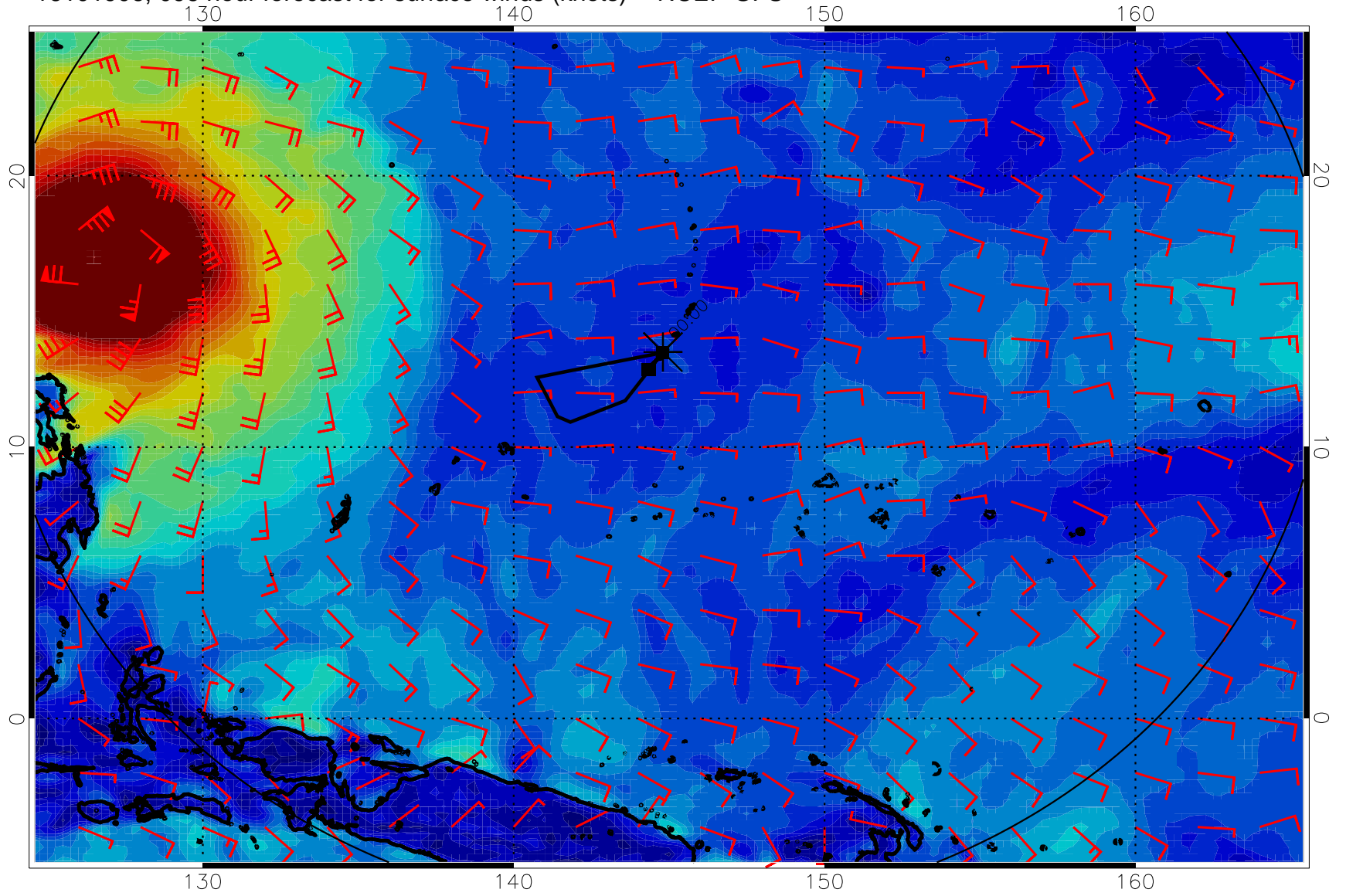
0 10 20 30  
Surface Wind Speed, knots

16101900, 090 hour forecast for surface winds (knots) -- NCEP GFS



0 10 20 30  
Surface Wind Speed, knots

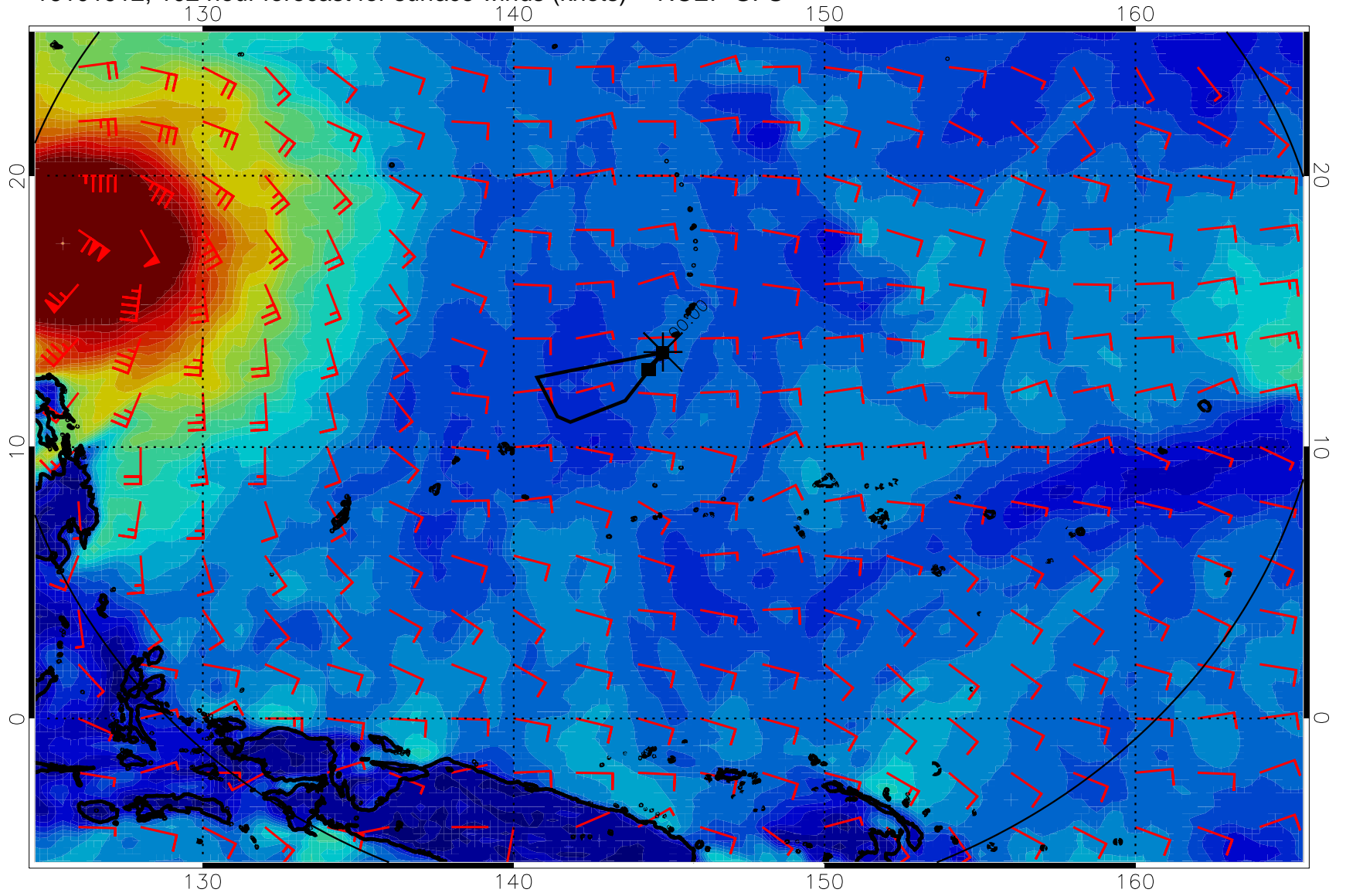
16101906, 096 hour forecast for surface winds (knots) -- NCEP GFS



0      10      20      30  
Surface Wind Speed, knots

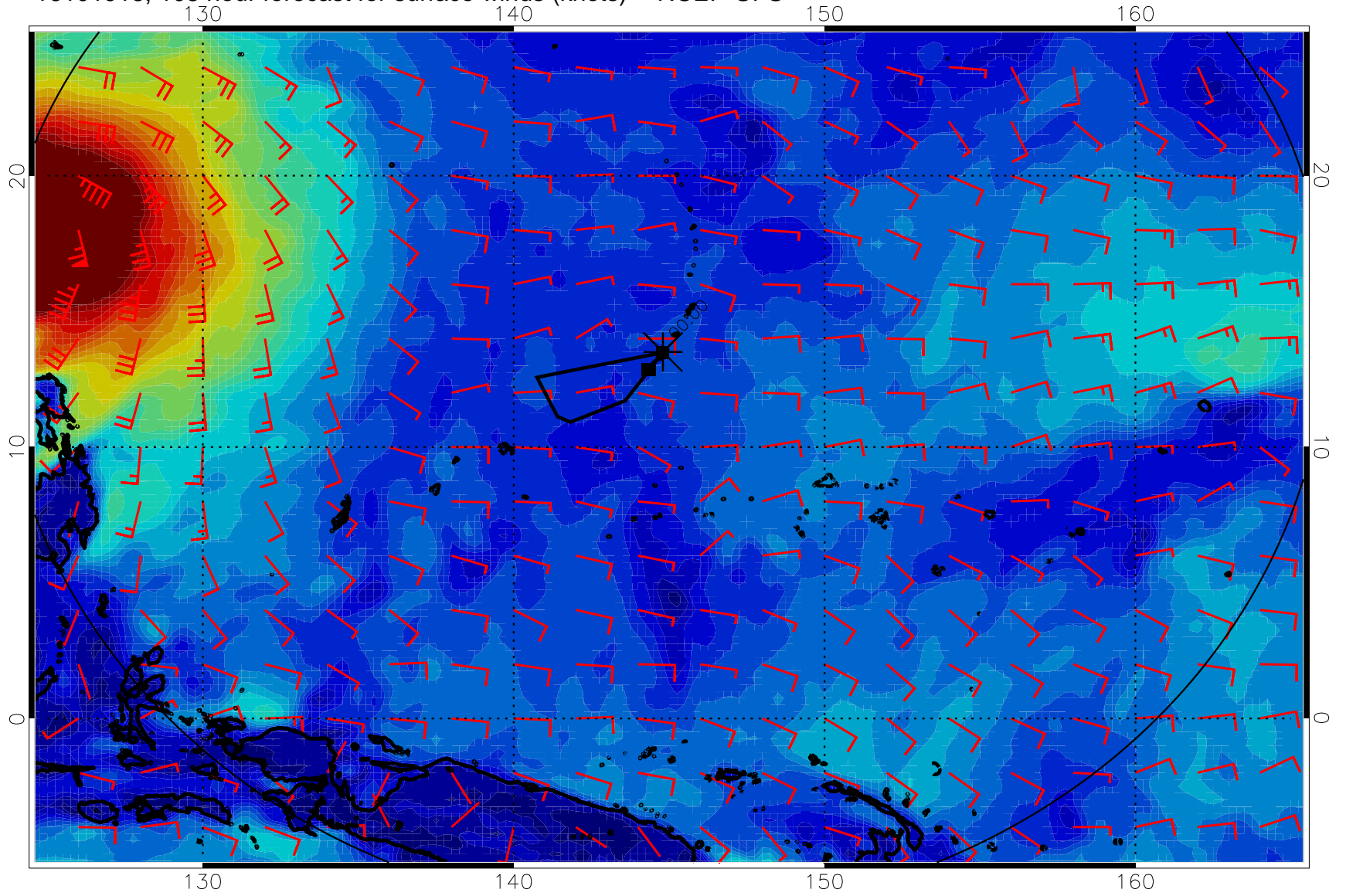


16101912, 102 hour forecast for surface winds (knots) -- NCEP GFS



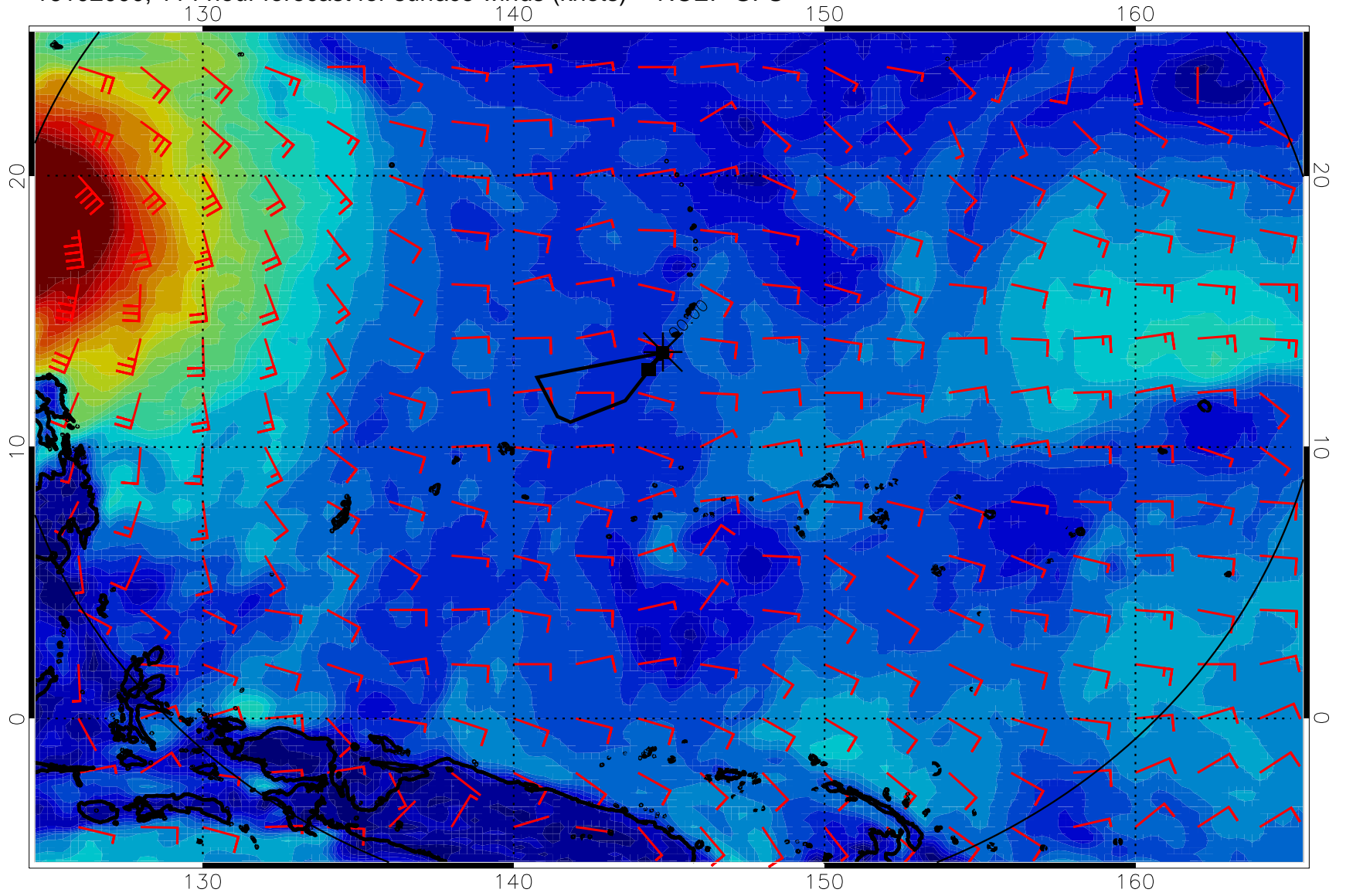
0      10      20      30  
Surface Wind Speed, knots

16101918, 108 hour forecast for surface winds (knots) -- NCEP GFS



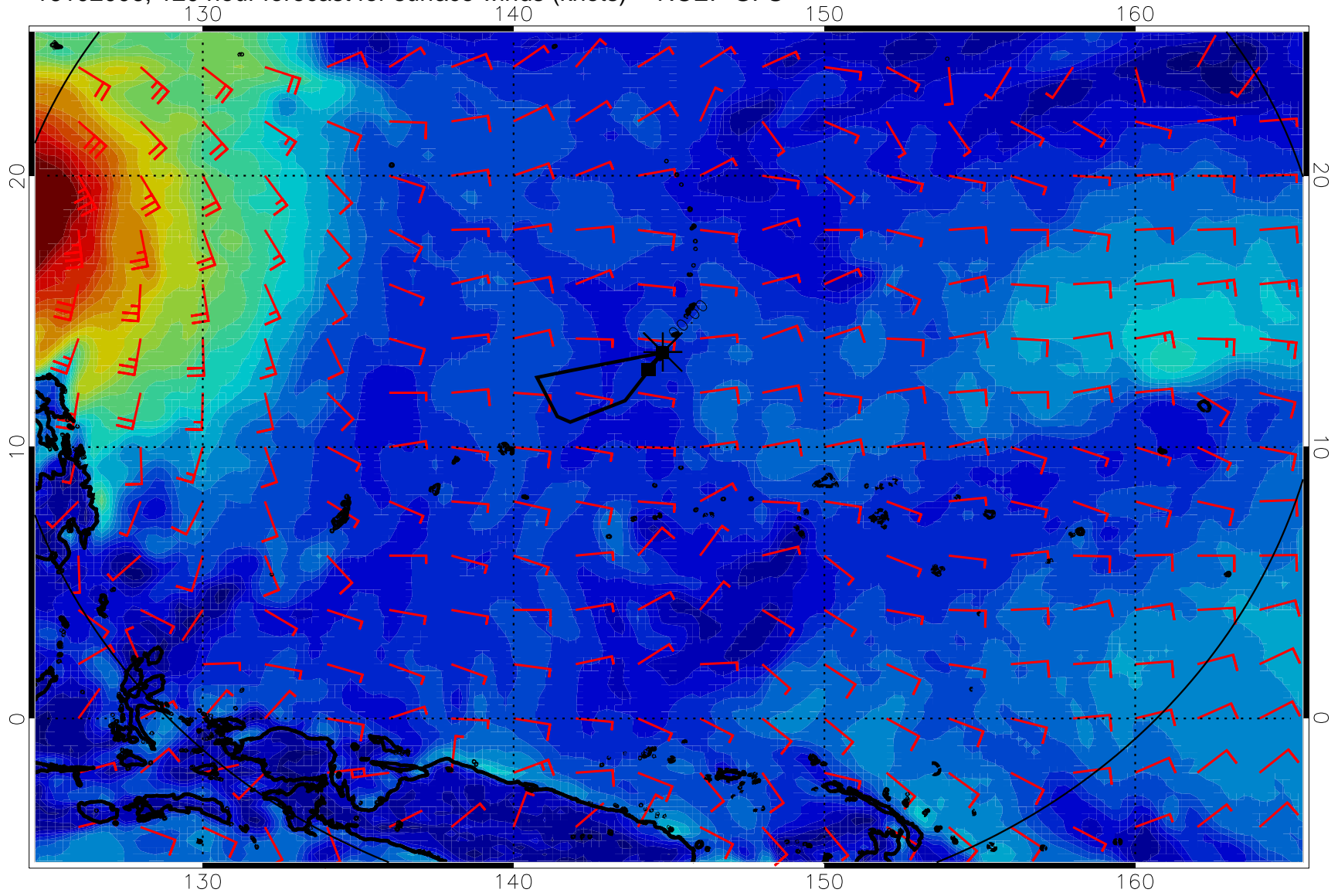
0      10      20      30  
Surface Wind Speed, knots

16102000, 114 hour forecast for surface winds (knots) -- NCEP GFS



0 10 20 30  
Surface Wind Speed, knots

16102006, 120 hour forecast for surface winds (knots) -- NCEP GFS



0 10 20 30  
Surface Wind Speed, knots