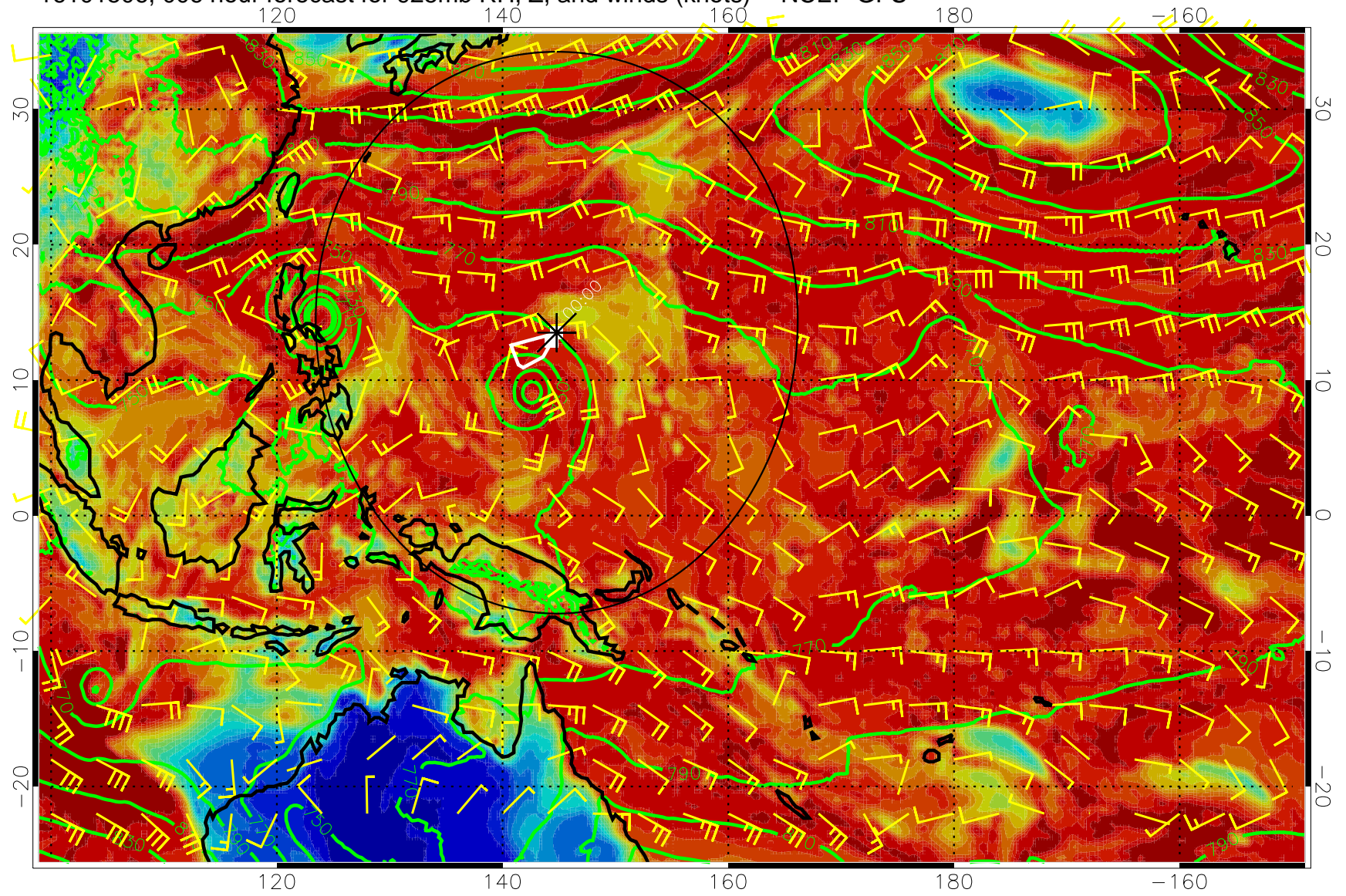
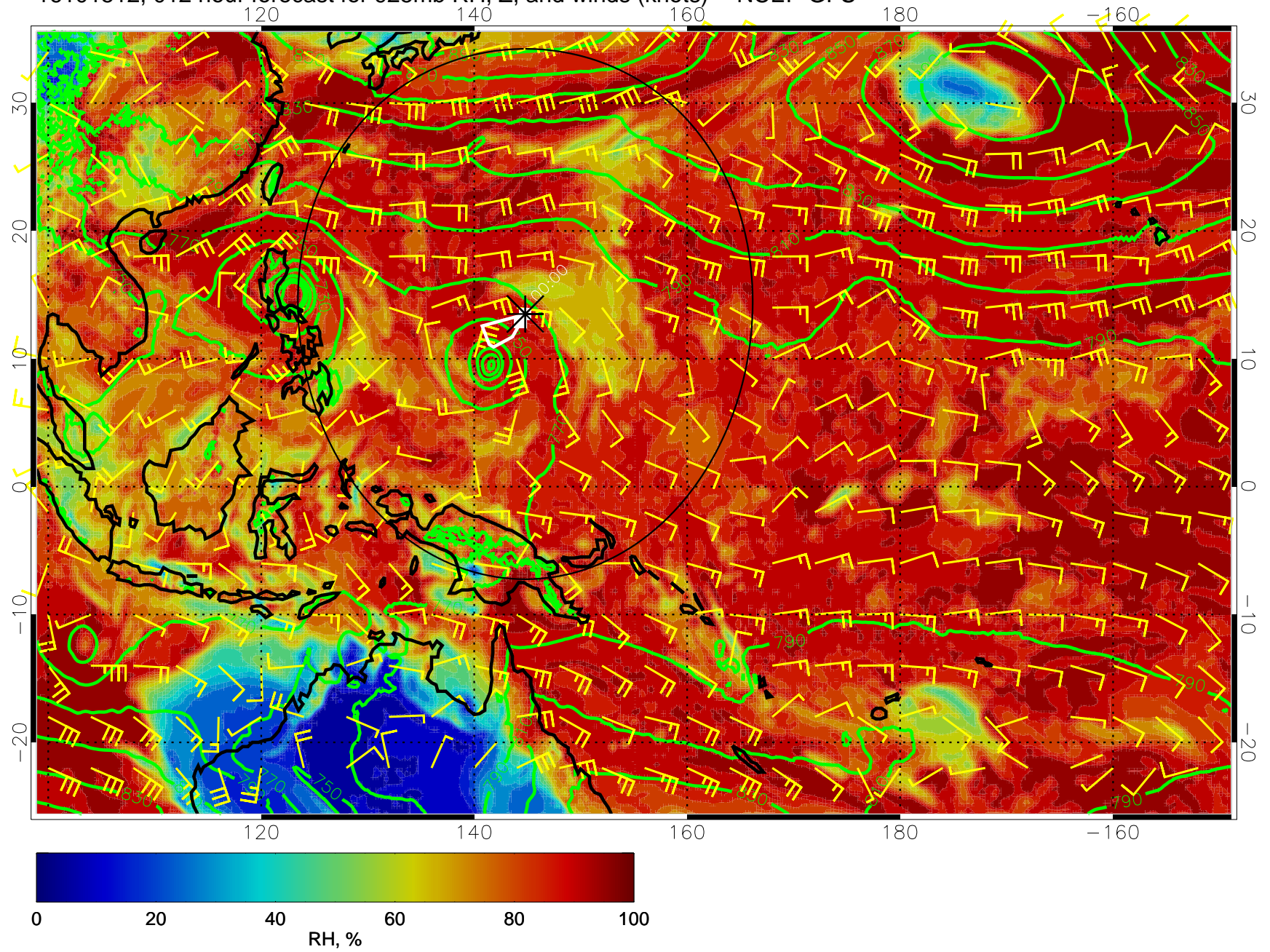


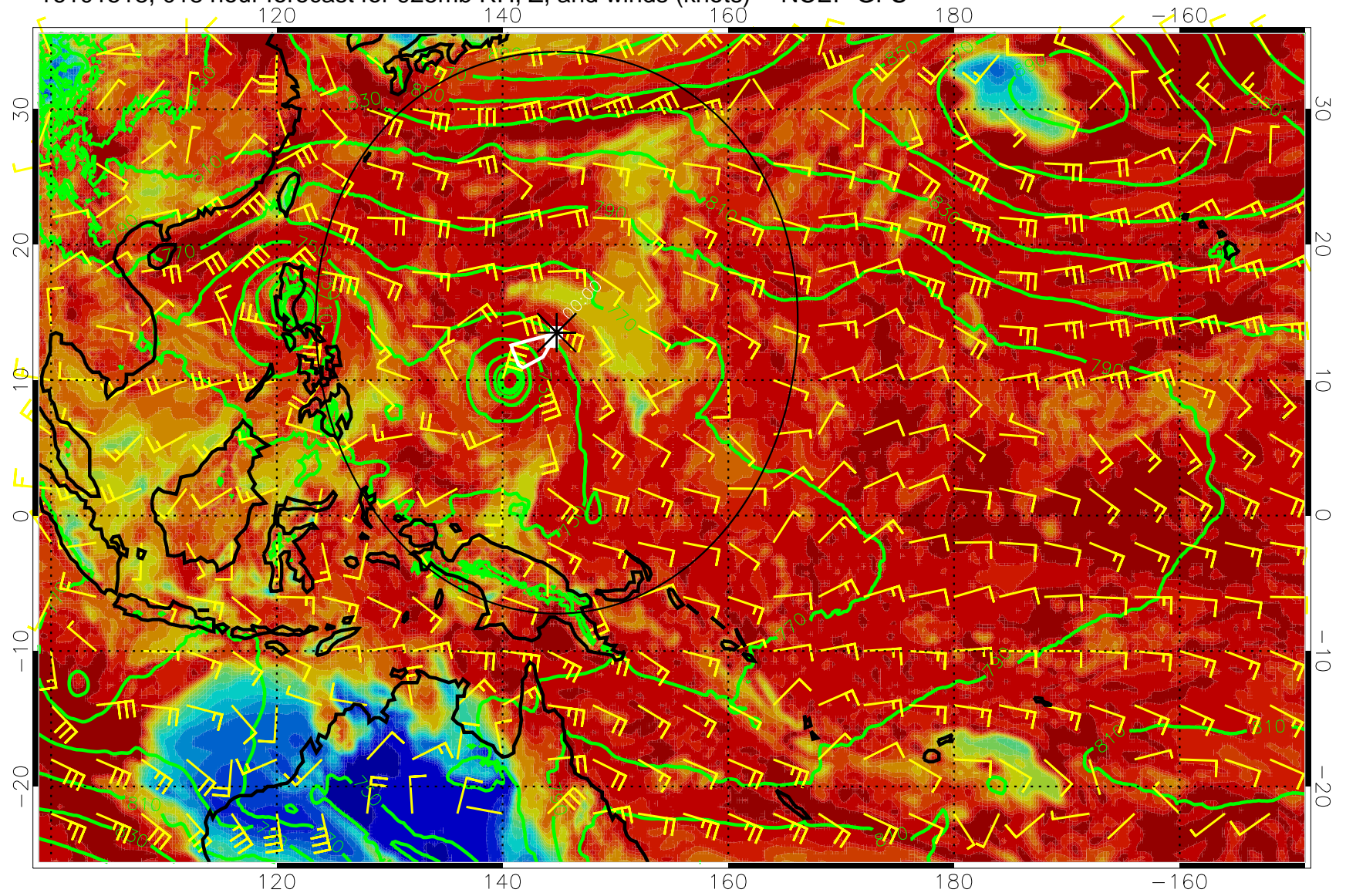
16101506, 006 hour forecast for 925mb RH, Z, and winds (knots) -- NCEP GFS



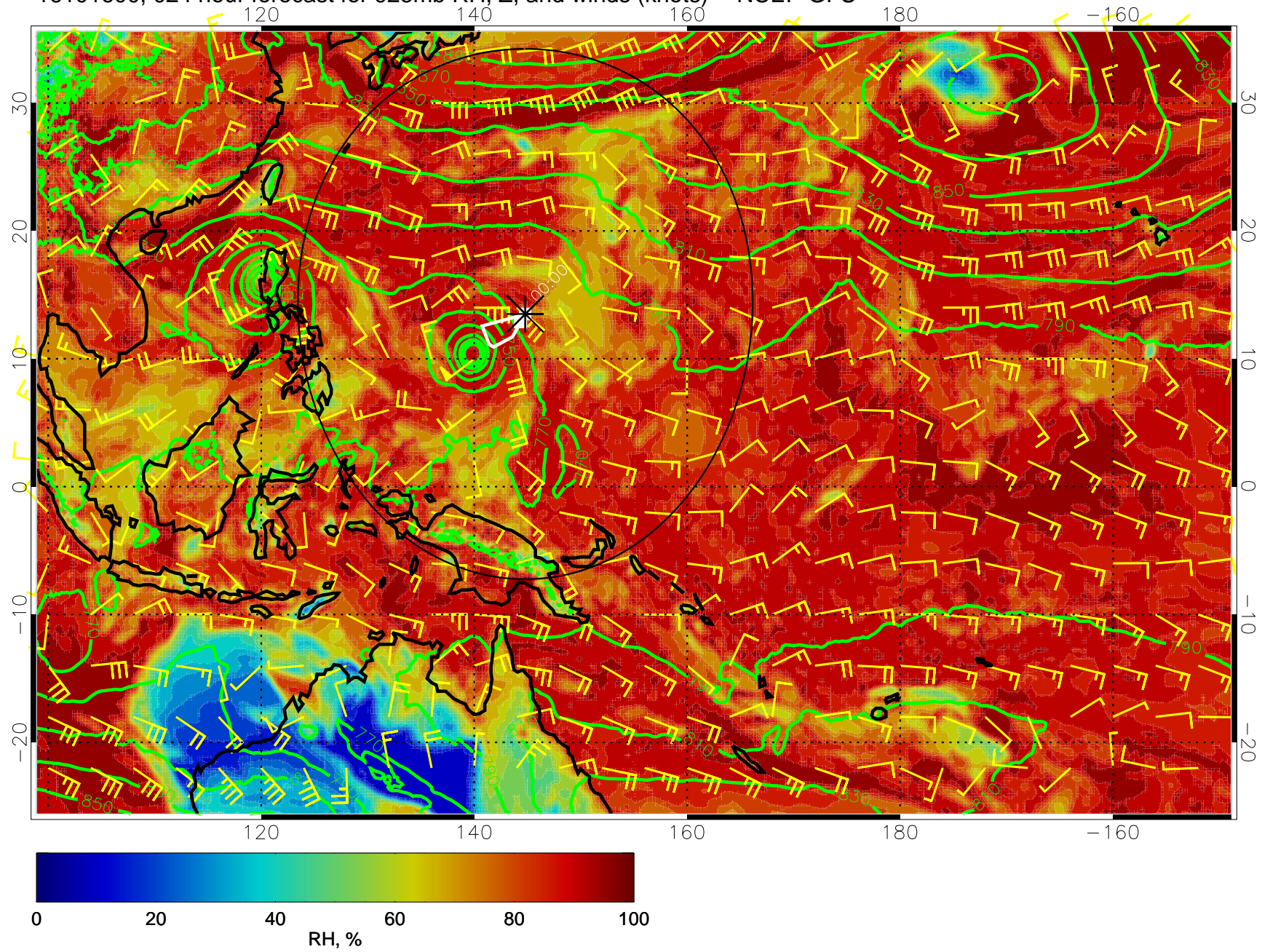
16101512, 012 hour forecast for 925mb RH, Z, and winds (knots) -- NCEP GFS



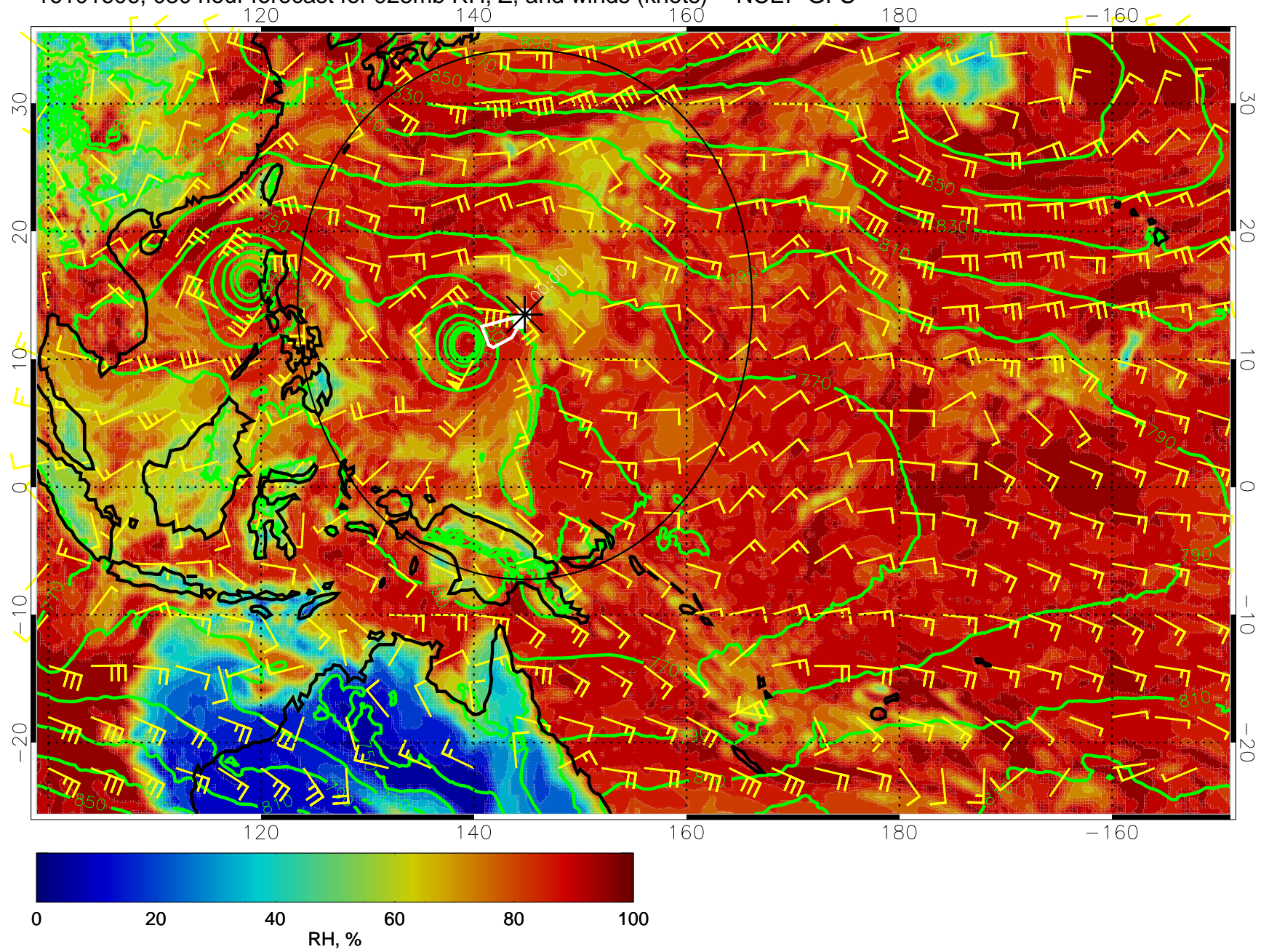
16101518, 018 hour forecast for 925mb RH, Z, and winds (knots) -- NCEP GFS



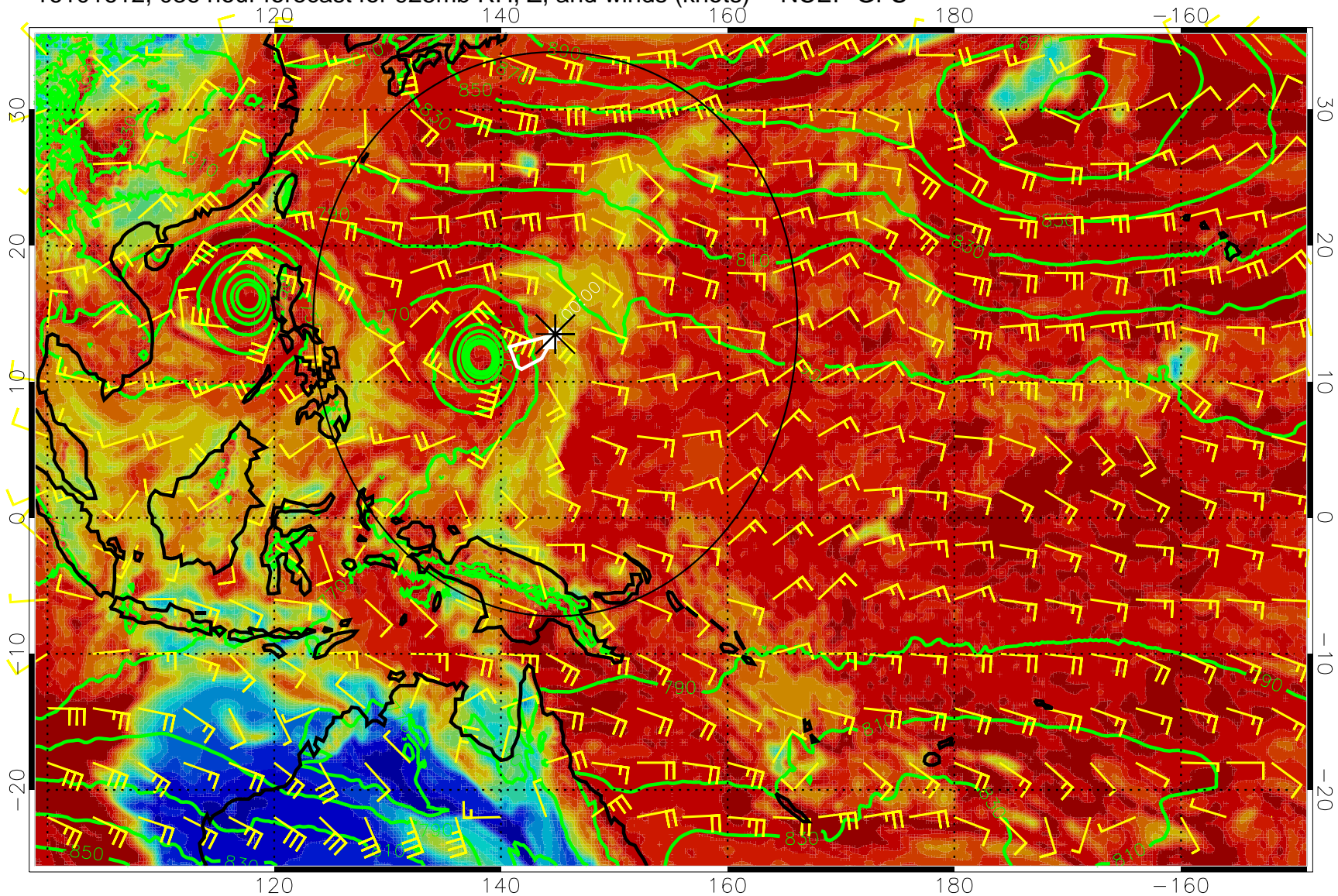
16101600, 024 hour forecast for 925mb RH, Z, and winds (knots) -- NCEP GFS



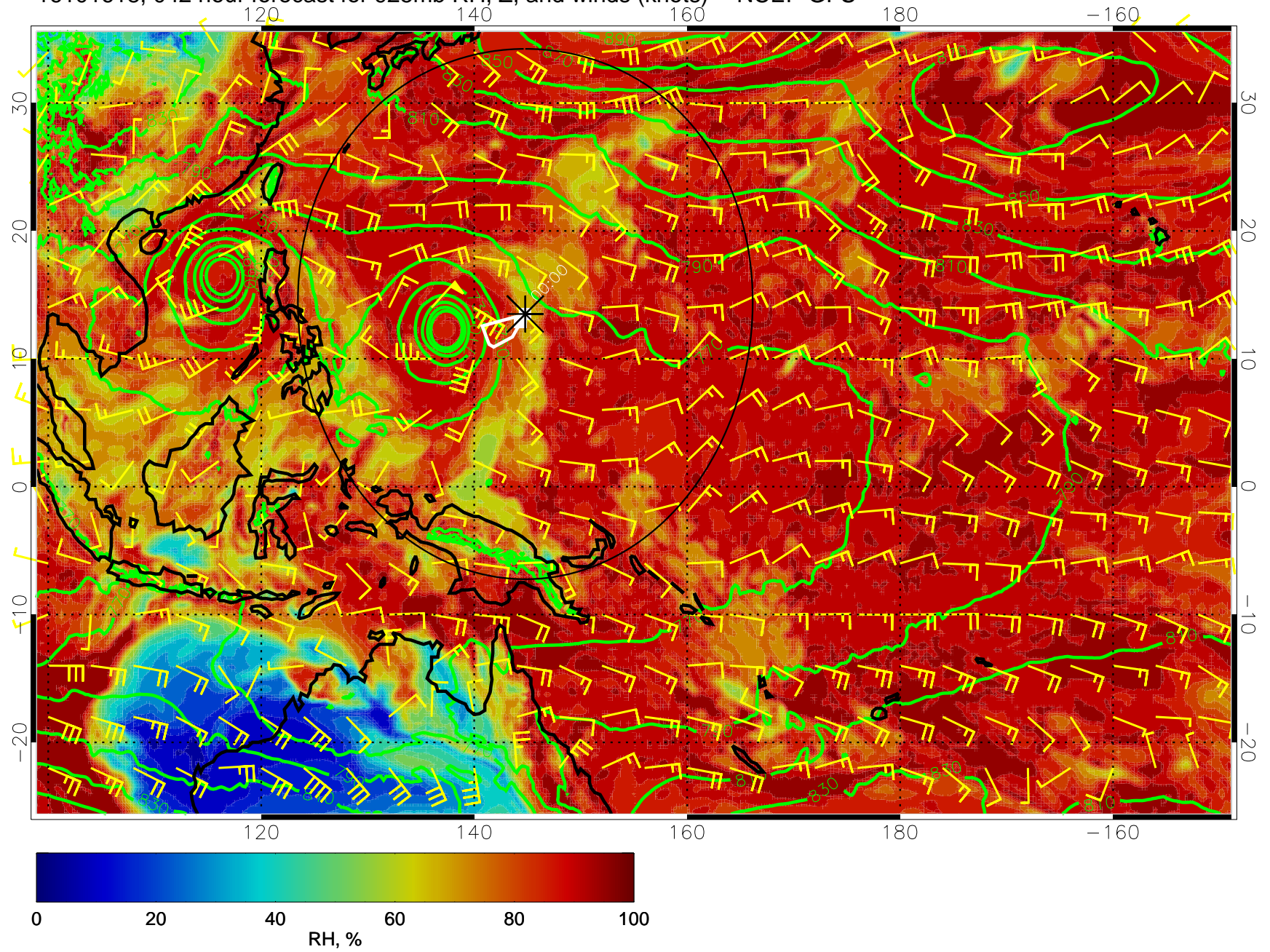
16101606, 030 hour forecast for 925mb RH, Z, and winds (knots) -- NCEP GFS



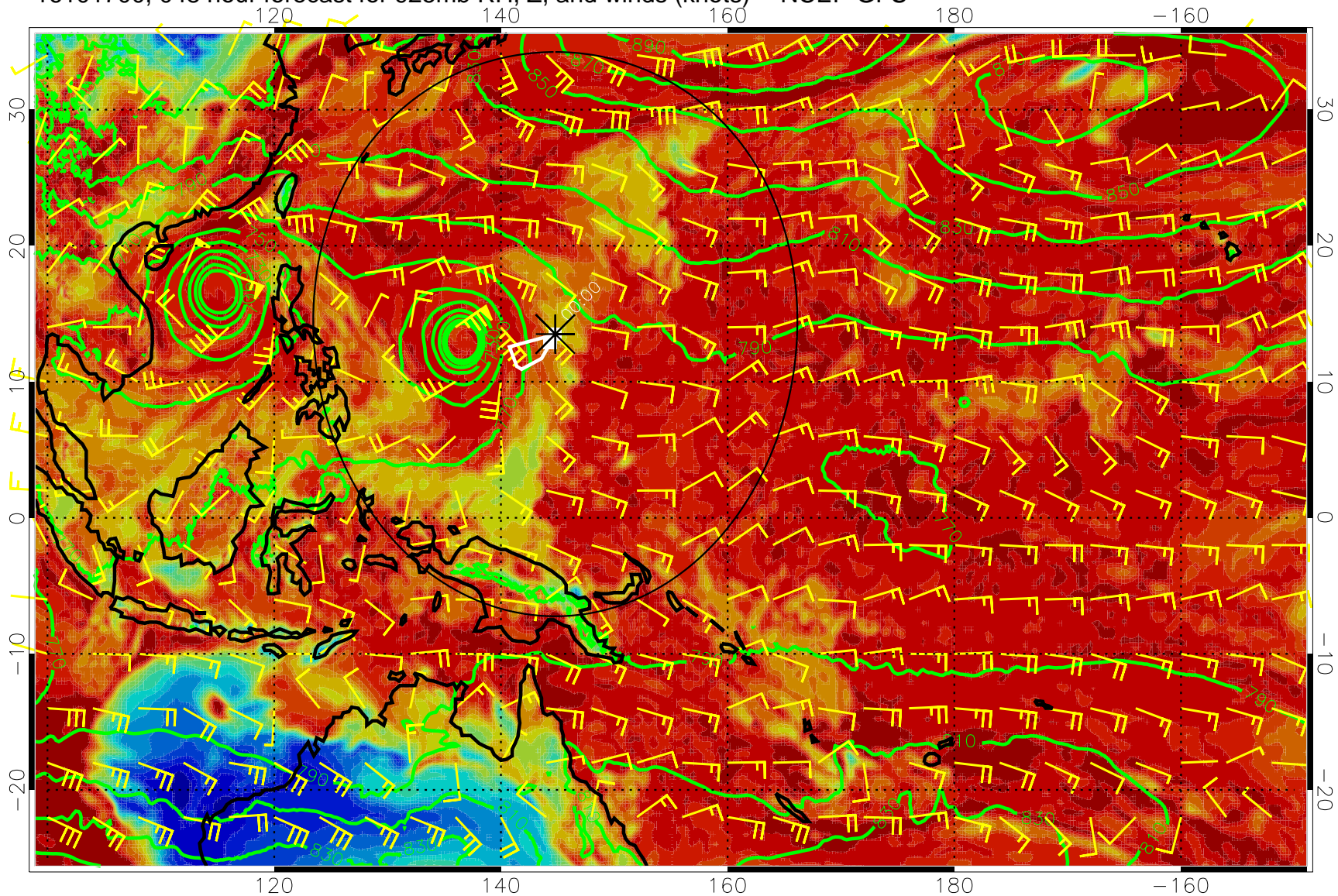
16101612, 036 hour forecast for 925mb RH, Z, and winds (knots) -- NCEP GFS



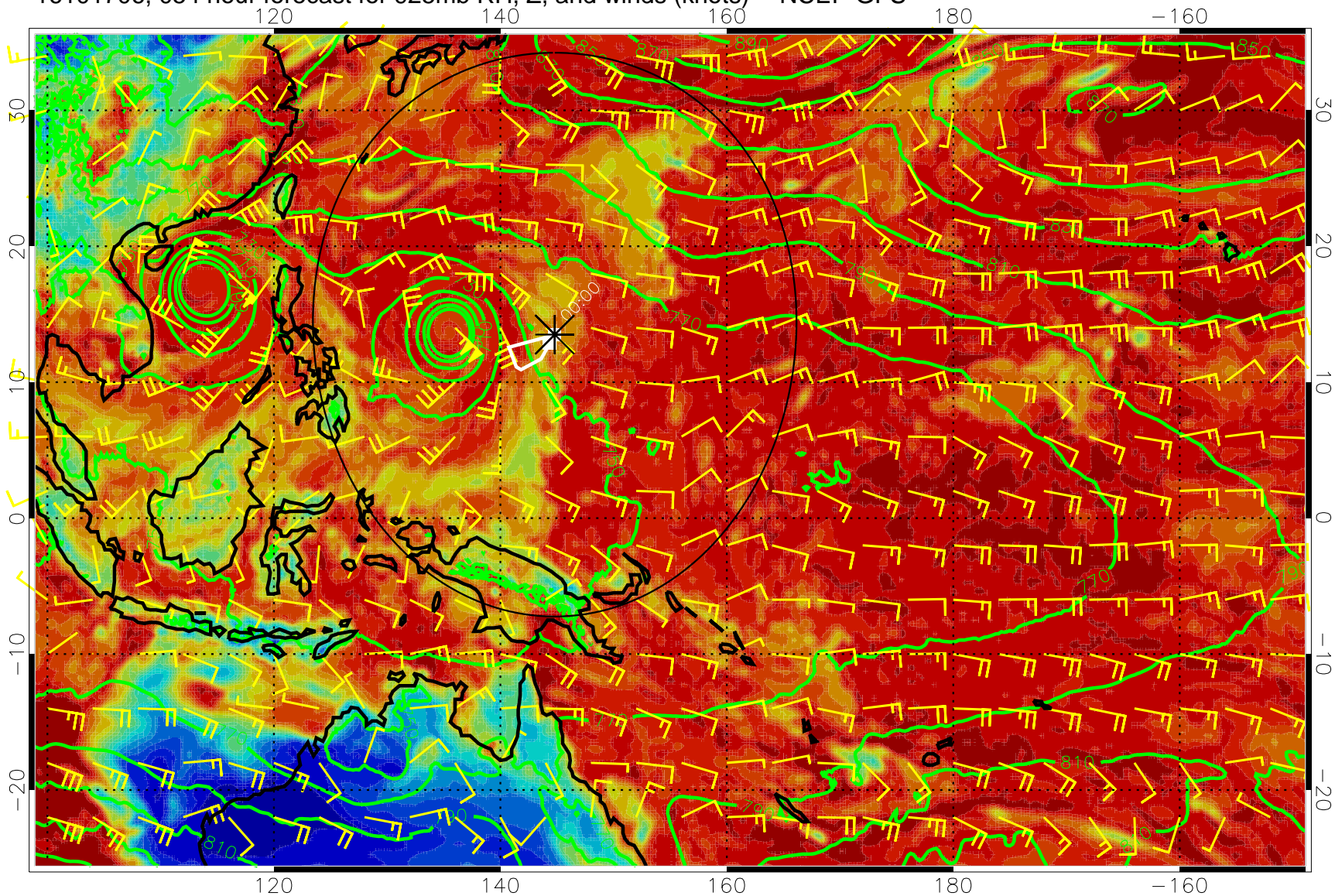
16101618, 042 hour forecast for 925mb RH, Z, and winds (knots) -- NCEP GFS



16101700, 048 hour forecast for 925mb RH, Z, and winds (knots) -- NCEP GFS

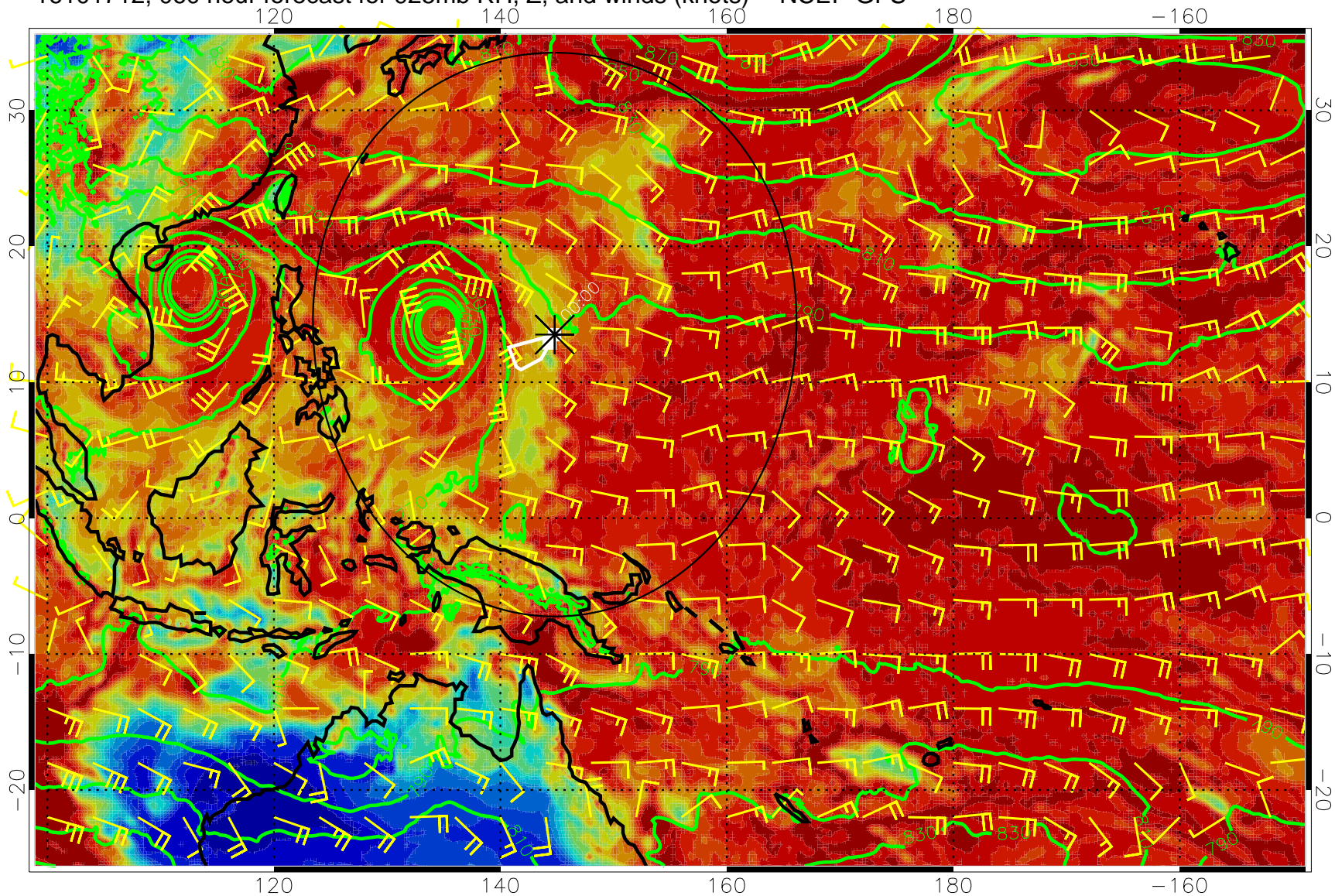


16101706, 054 hour forecast for 925mb RH, Z, and winds (knots) -- NCEP GFS

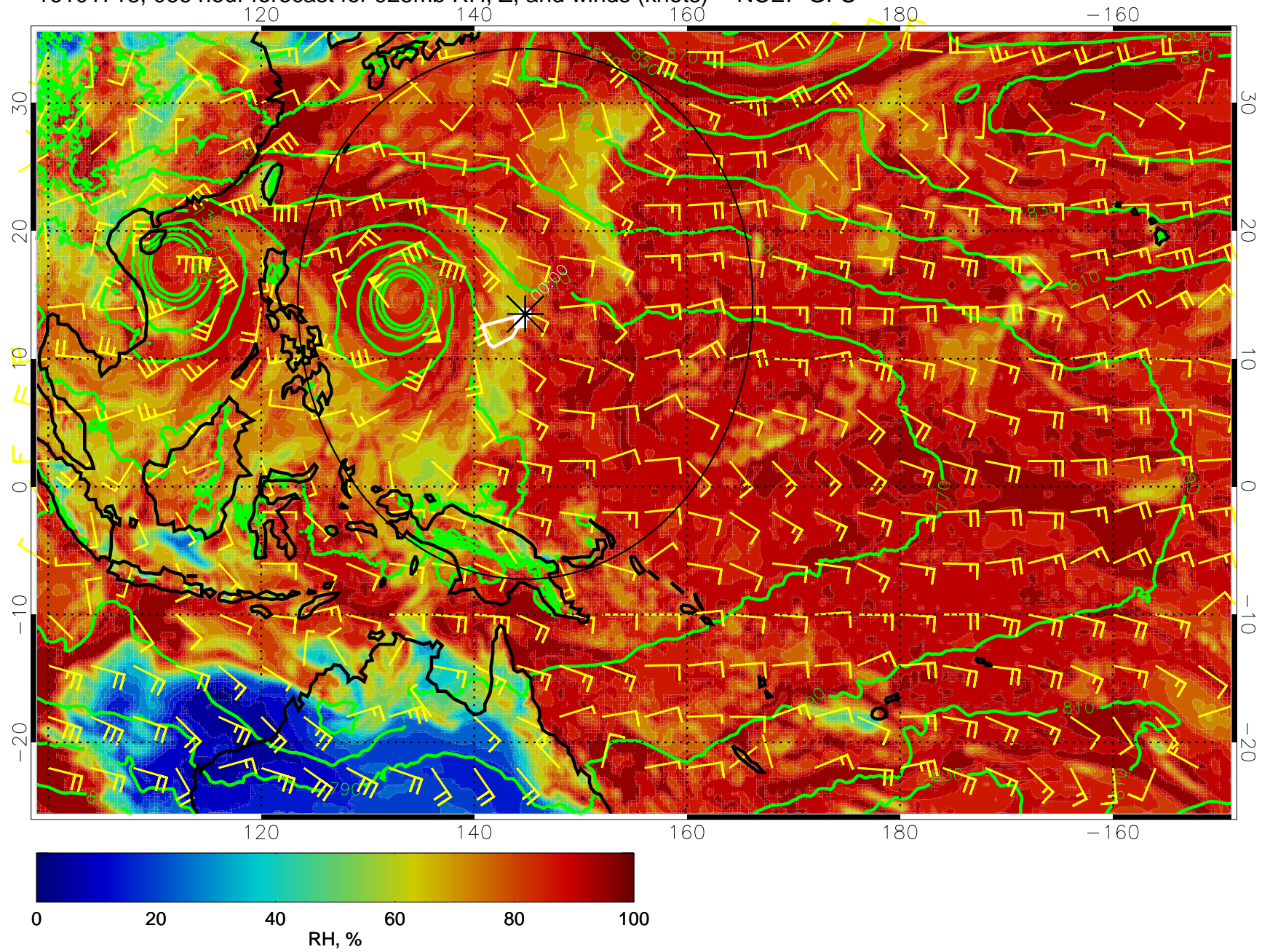


0 20 40 60 80 100
RH, %

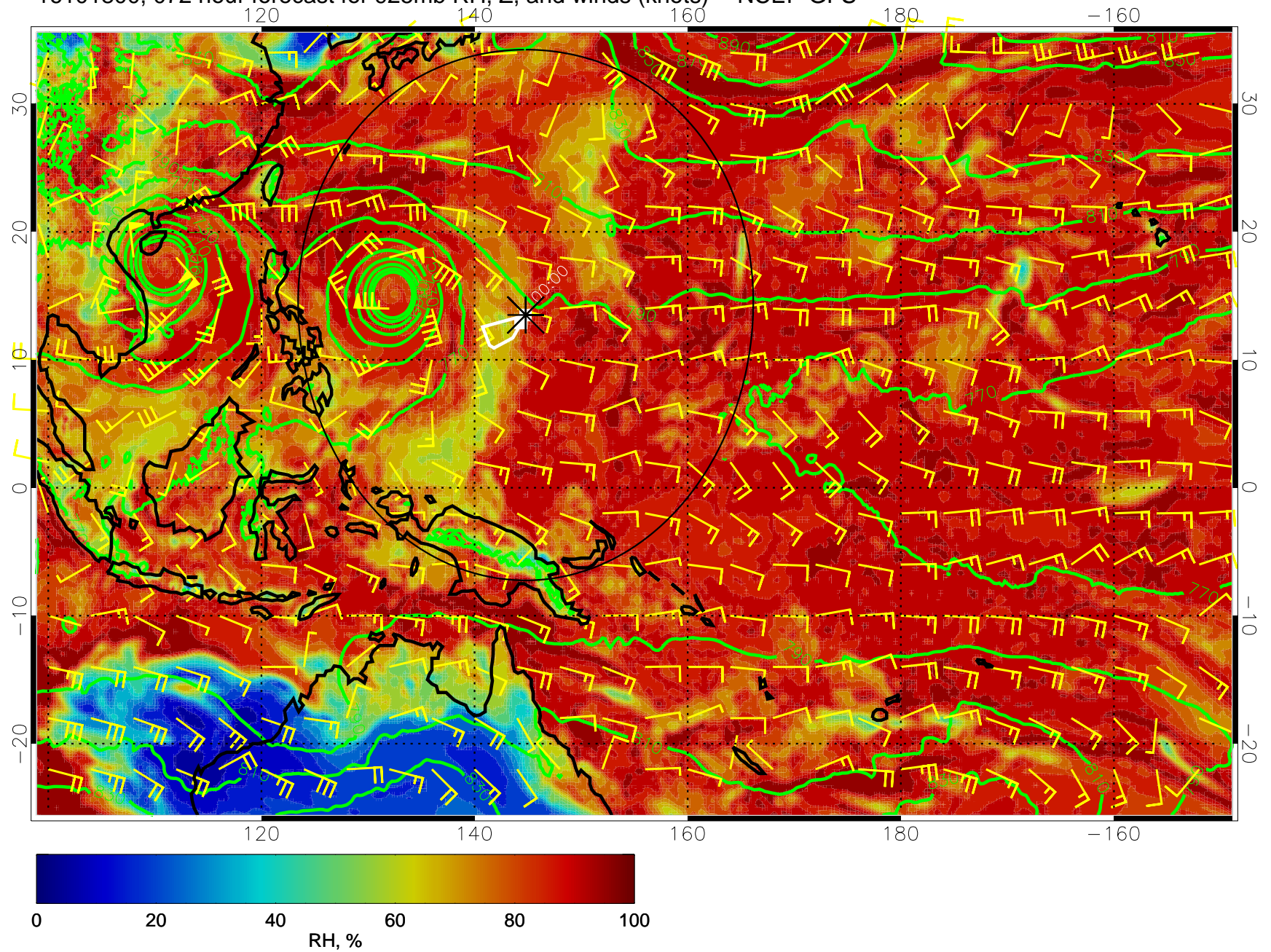
16101712, 060 hour forecast for 925mb RH, Z, and winds (knots) -- NCEP GFS



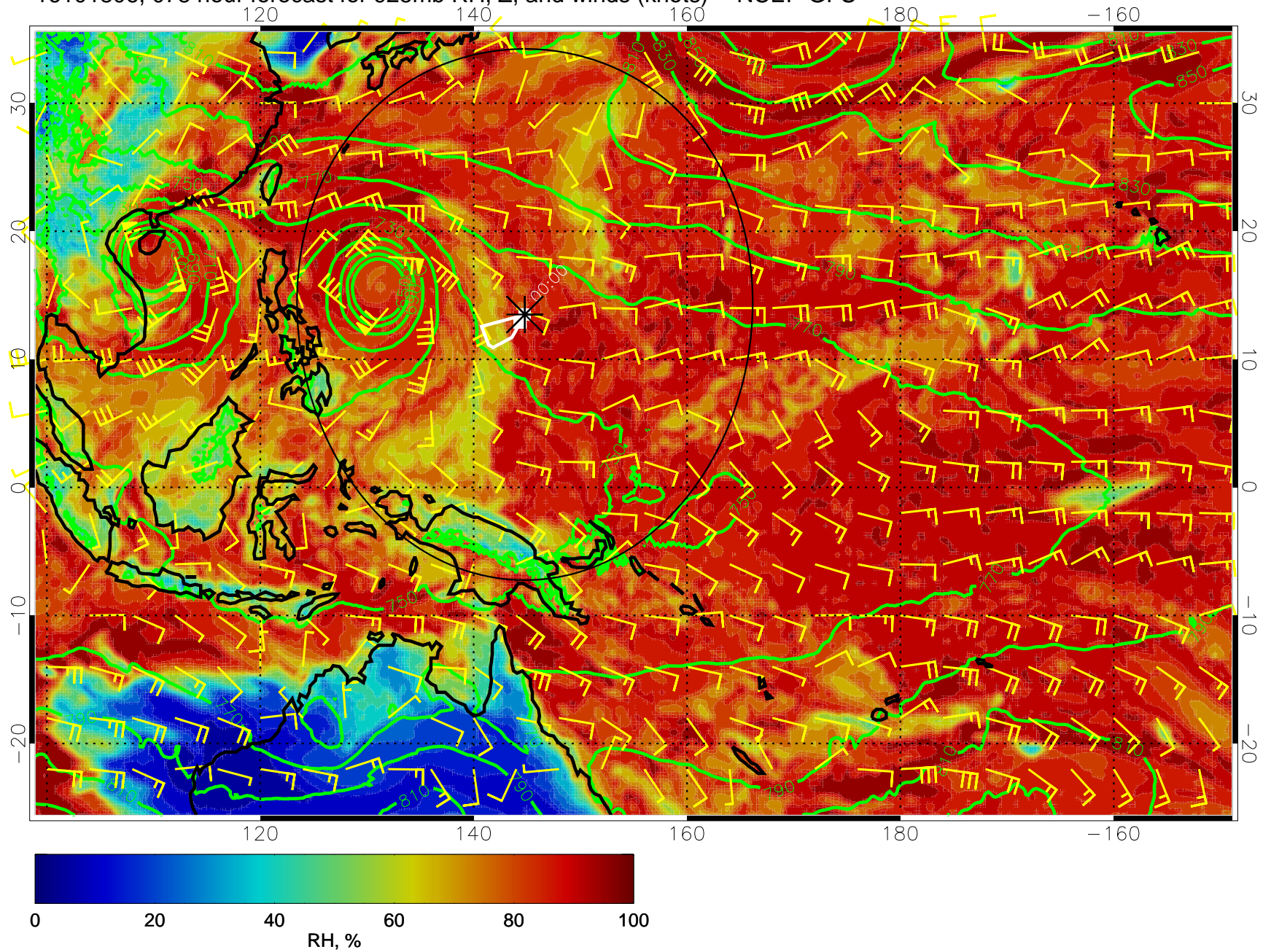
16101718, 066 hour forecast for 925mb RH, Z, and winds (knots) -- NCEP GFS



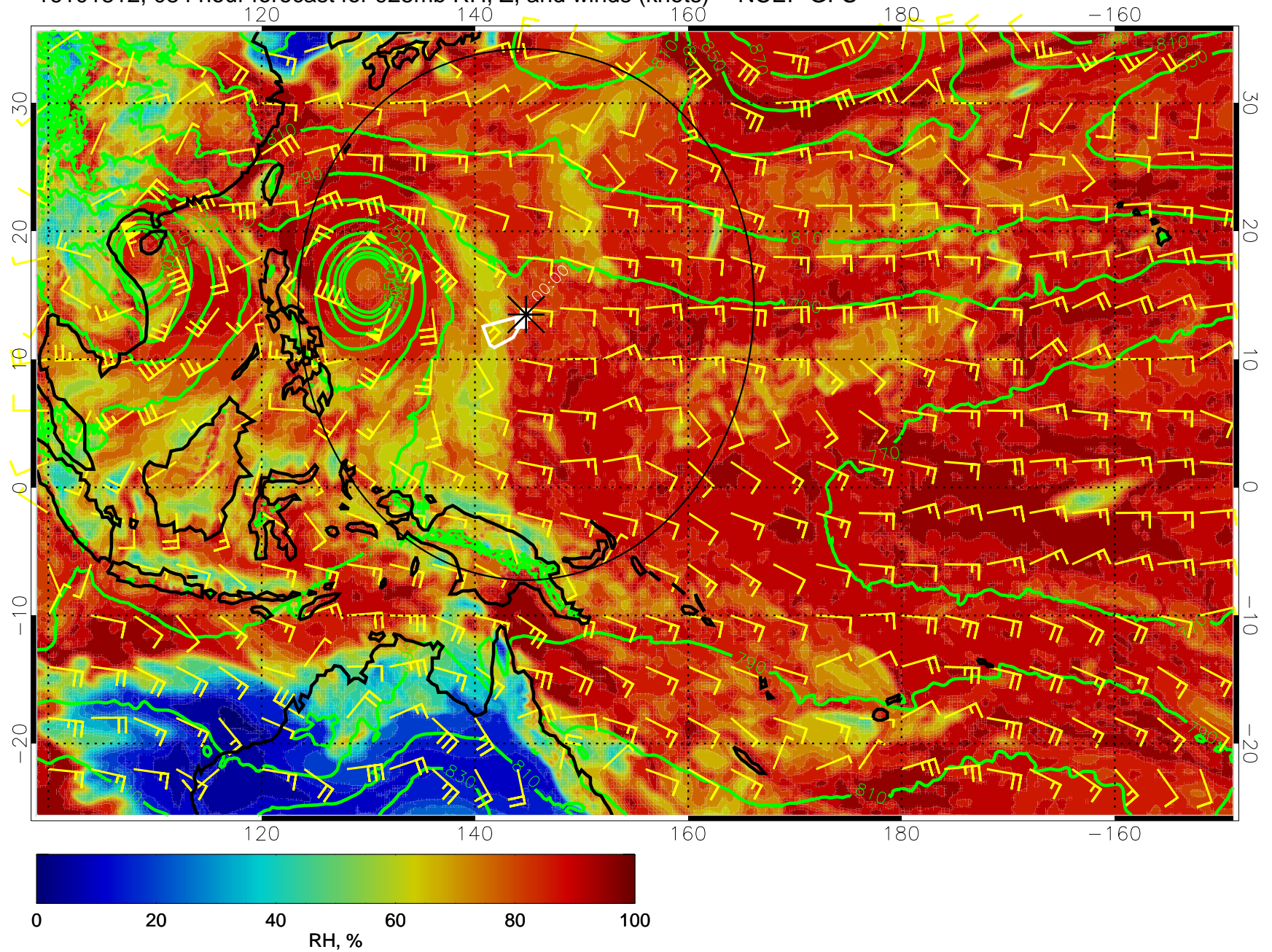
16101800, 072 hour forecast for 925mb RH, Z, and winds (knots) -- NCEP GFS



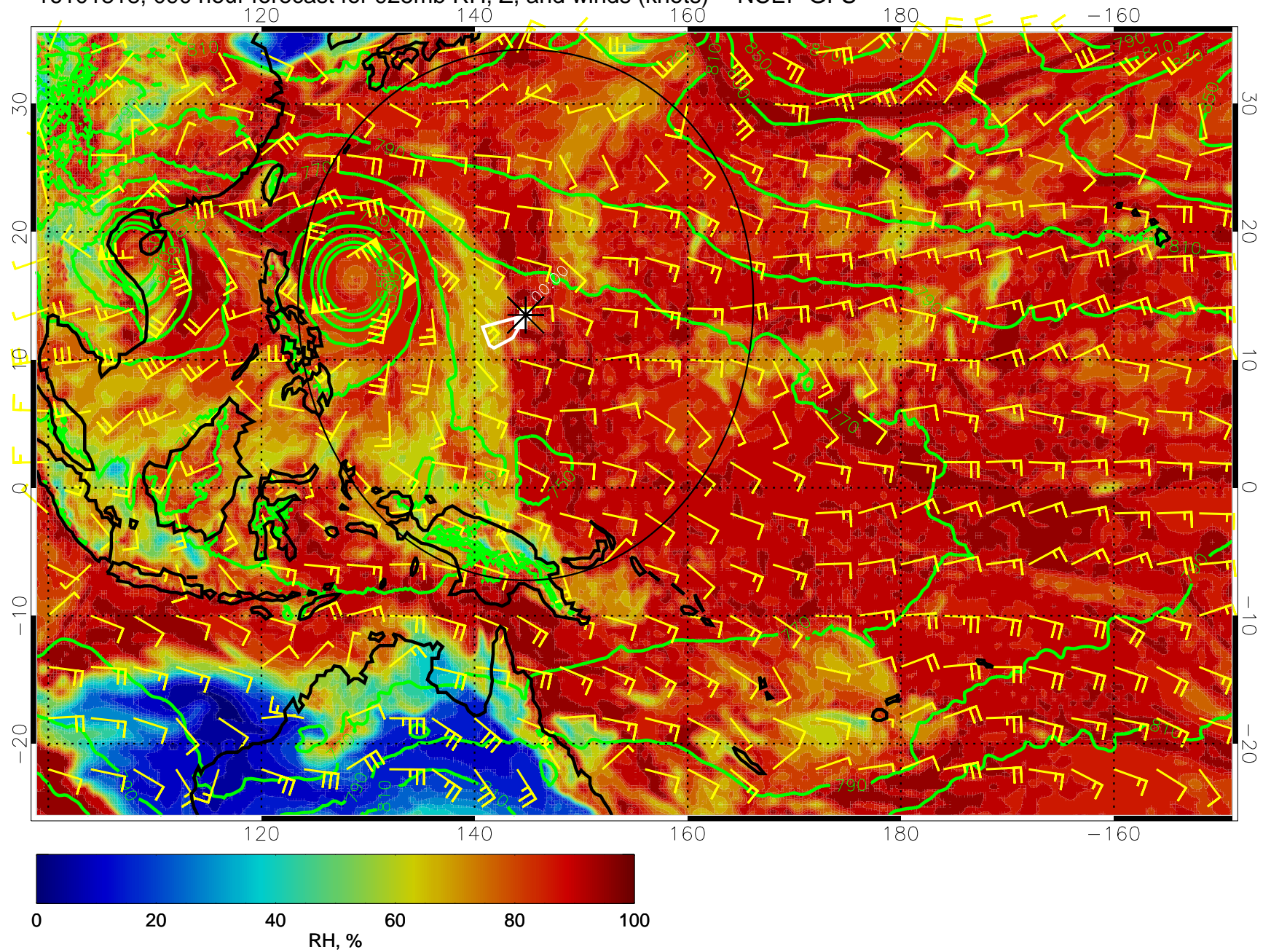
16101806, 078 hour forecast for 925mb RH, Z, and winds (knots) -- NCEP GFS



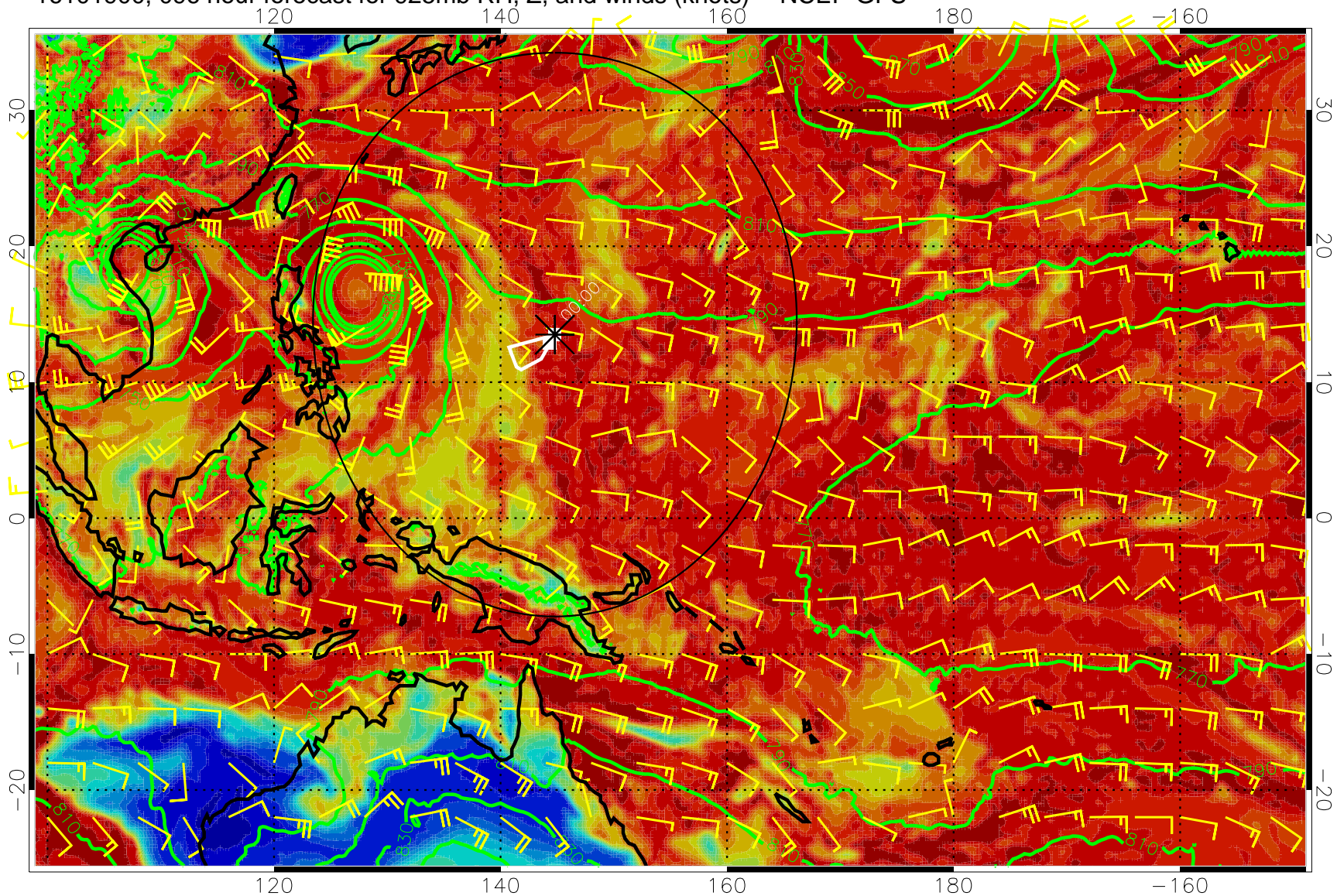
16101812, 084 hour forecast for 925mb RH, Z, and winds (knots) -- NCEP GFS



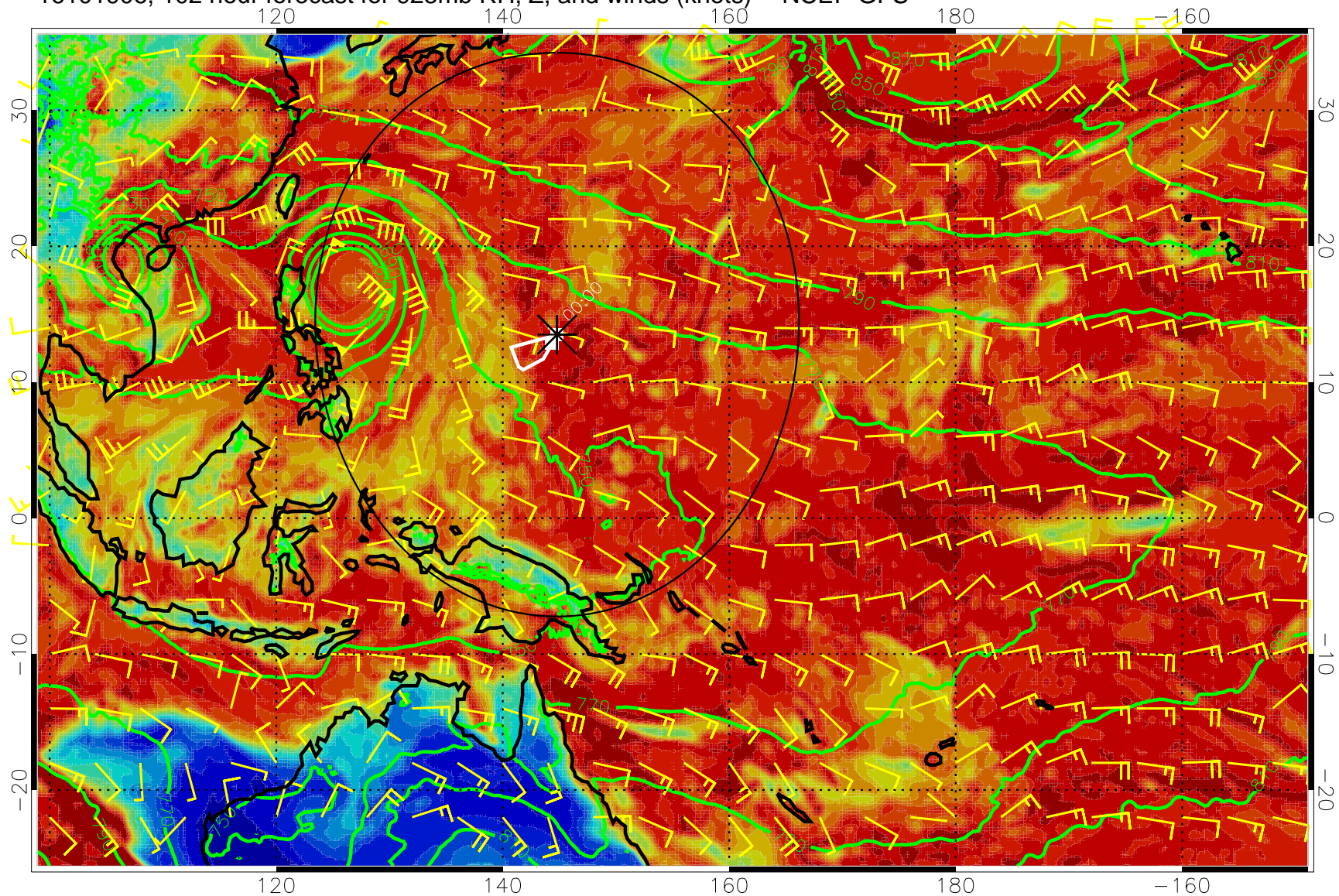
16101818, 090 hour forecast for 925mb RH, Z, and winds (knots) -- NCEP GFS



16101900, 096 hour forecast for 925mb RH, Z, and winds (knots) -- NCEP GFS

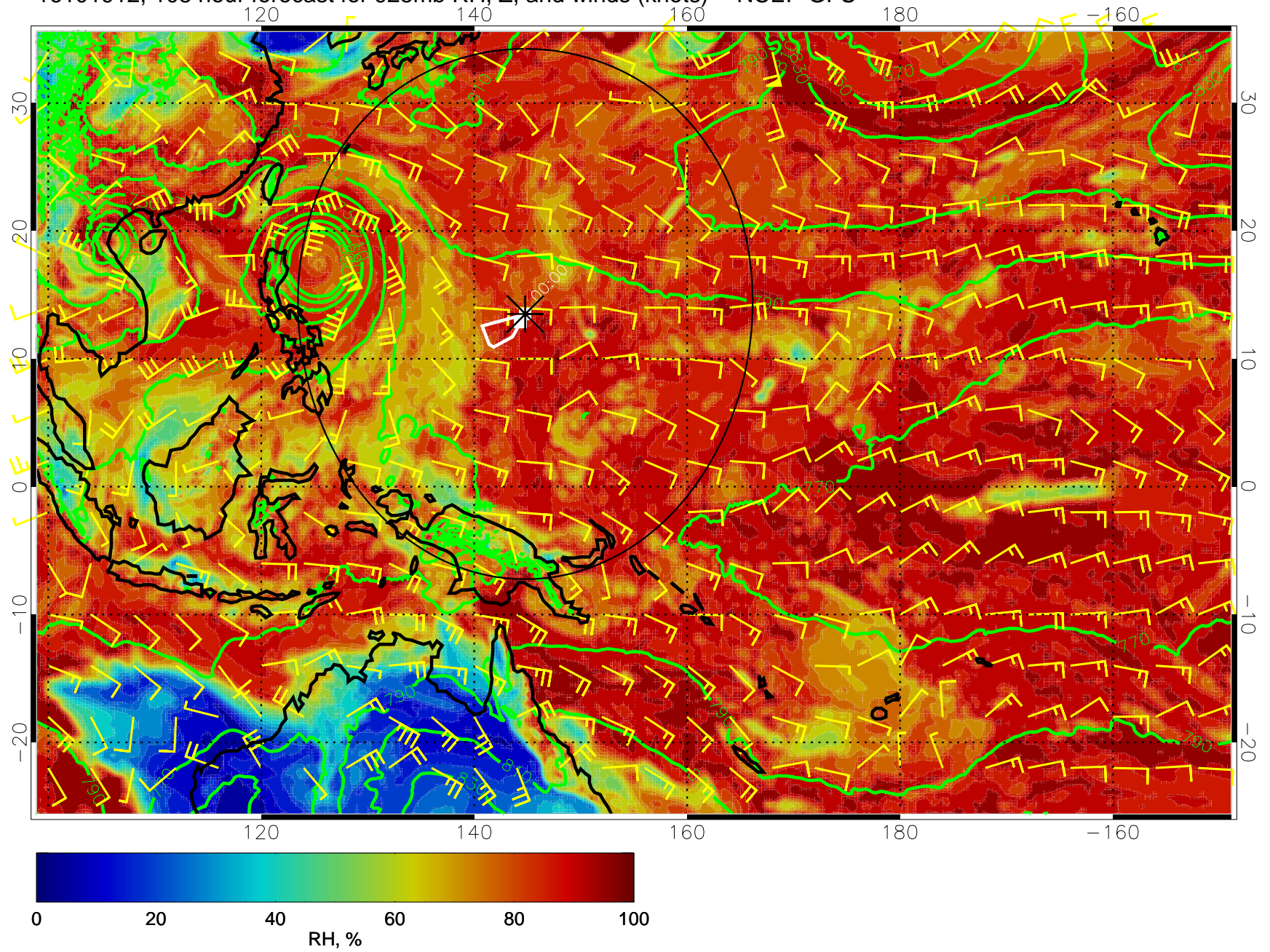


16101906, 102 hour forecast for 925mb RH, Z, and winds (knots) -- NCEP GFS

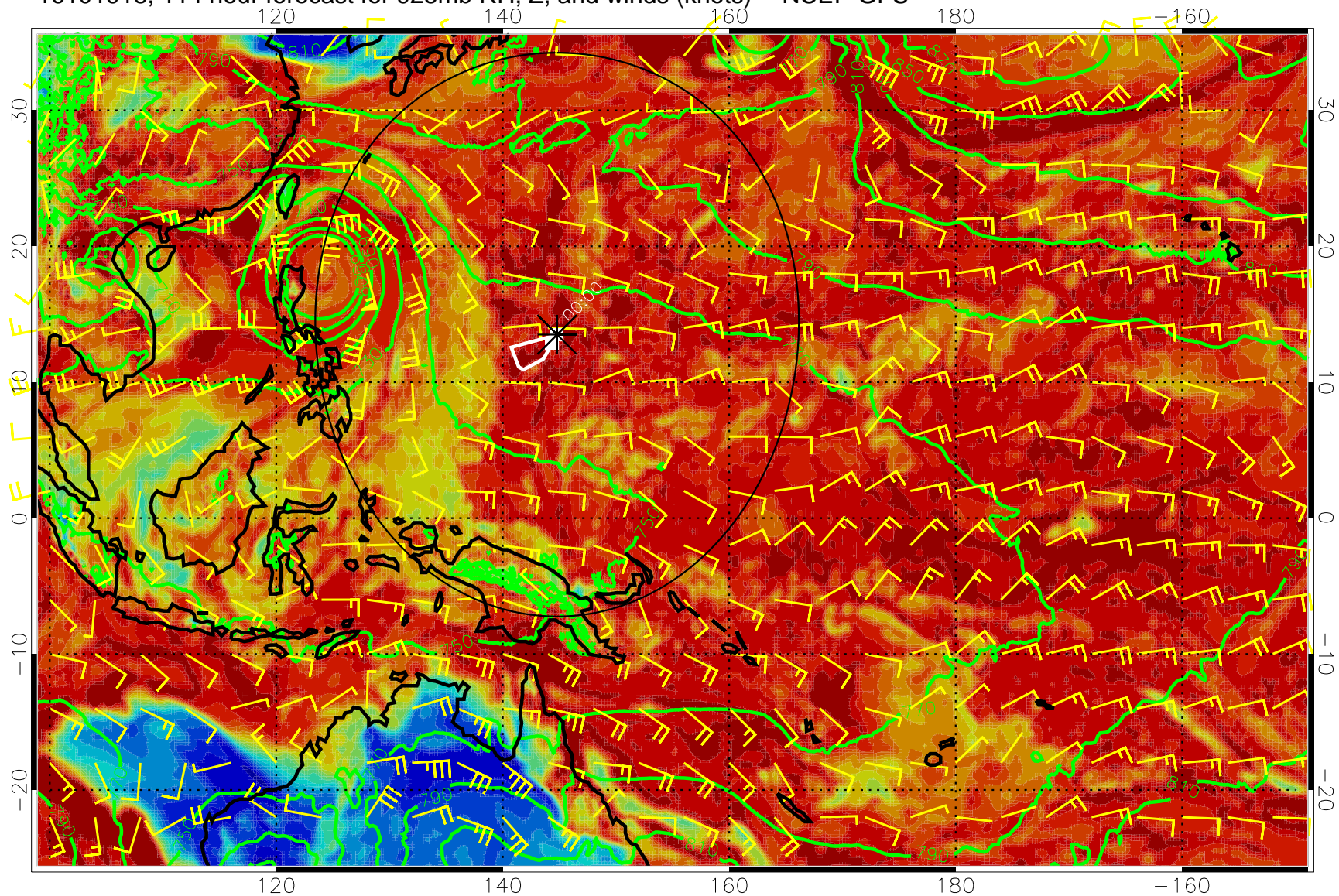


0 20 40 60 80 100
RH, %

16101912, 108 hour forecast for 925mb RH, Z, and winds (knots) -- NCEP GFS



16101918, 114 hour forecast for 925mb RH, Z, and winds (knots) -- NCEP GFS



16102000, 120 hour forecast for 925mb RH, Z, and winds (knots) -- NCEP GFS

