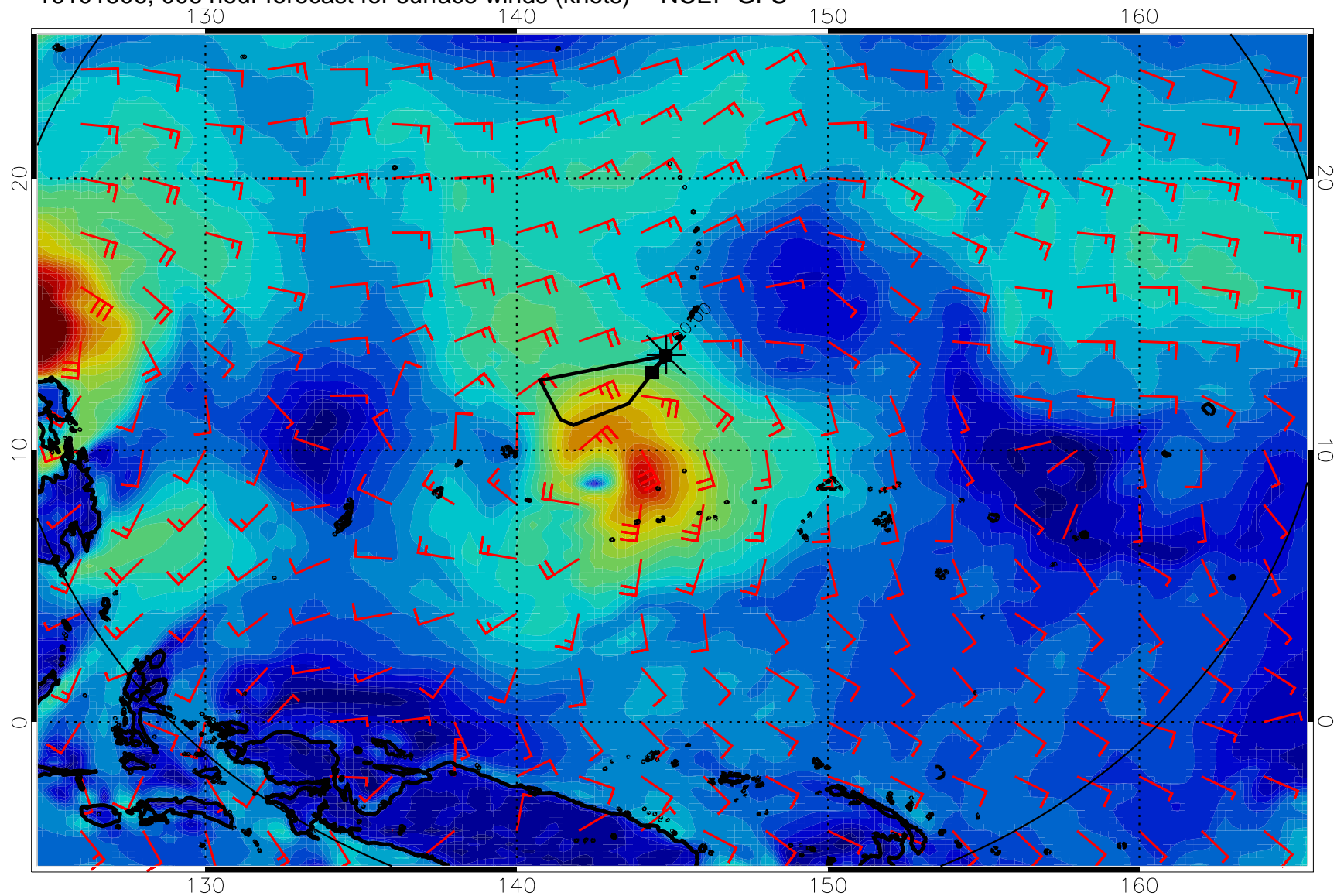
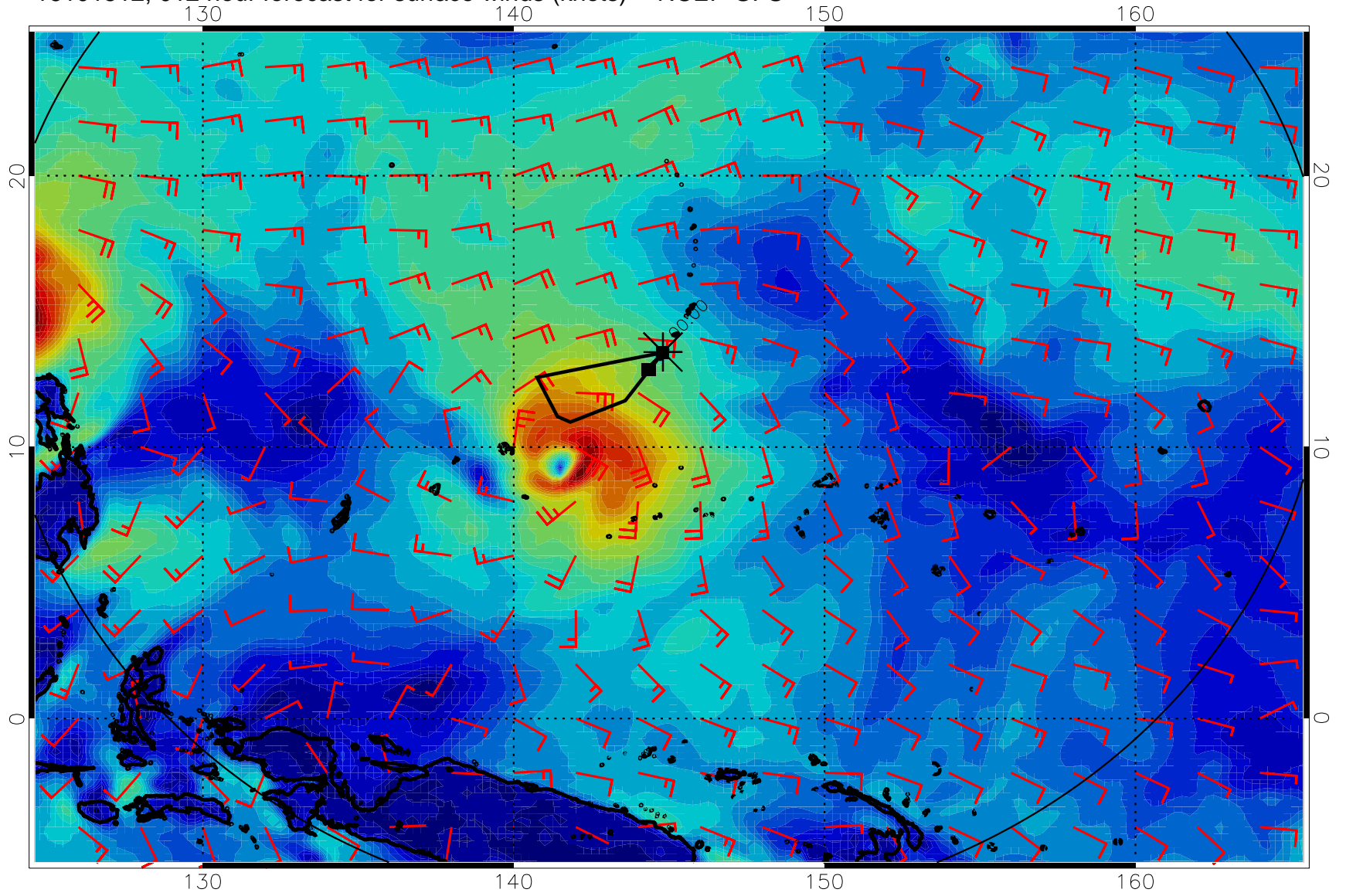


16101506, 006 hour forecast for surface winds (knots) -- NCEP GFS



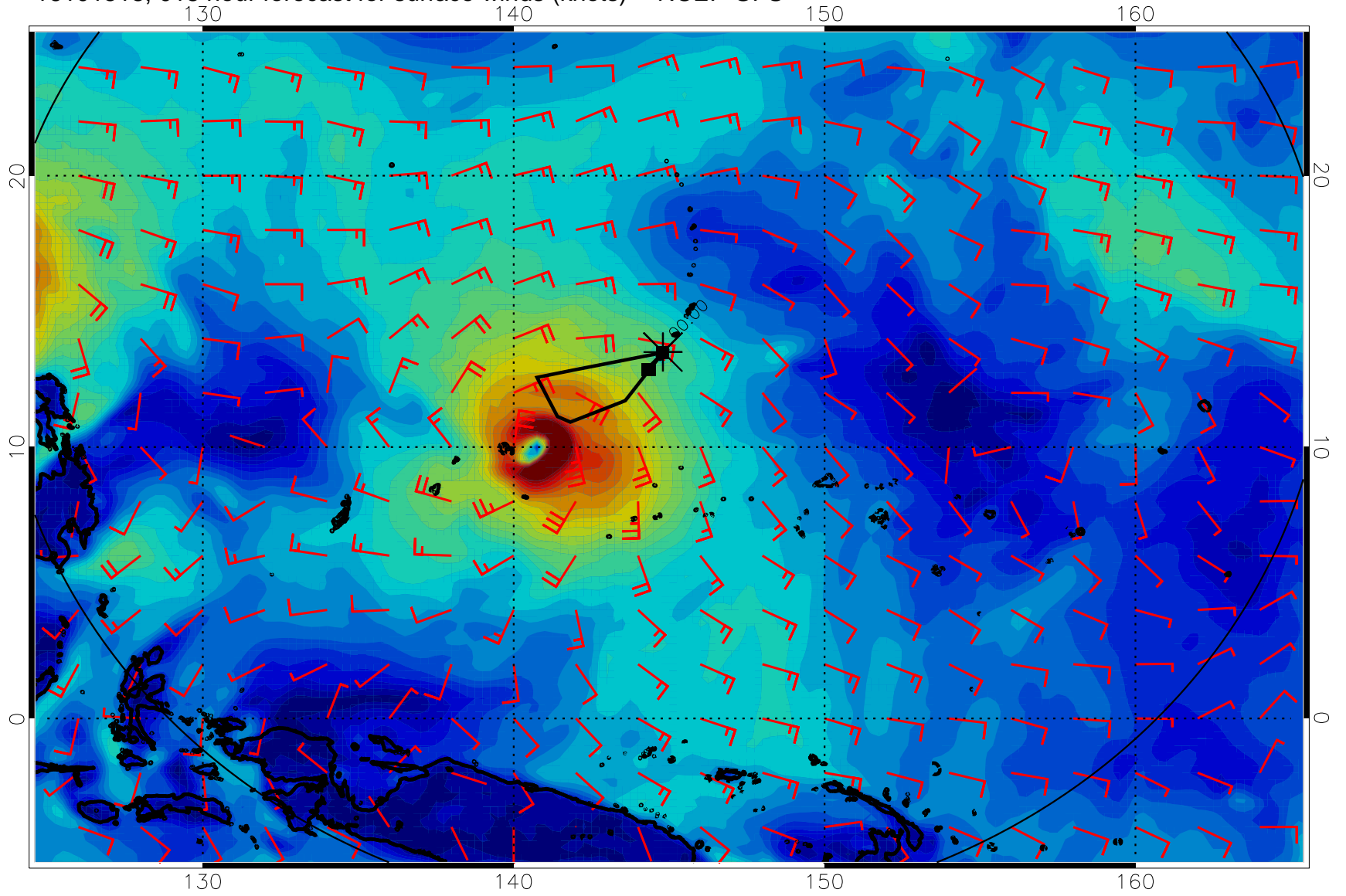
0 10 20 30  
Surface Wind Speed, knots

16101512, 012 hour forecast for surface winds (knots) -- NCEP GFS



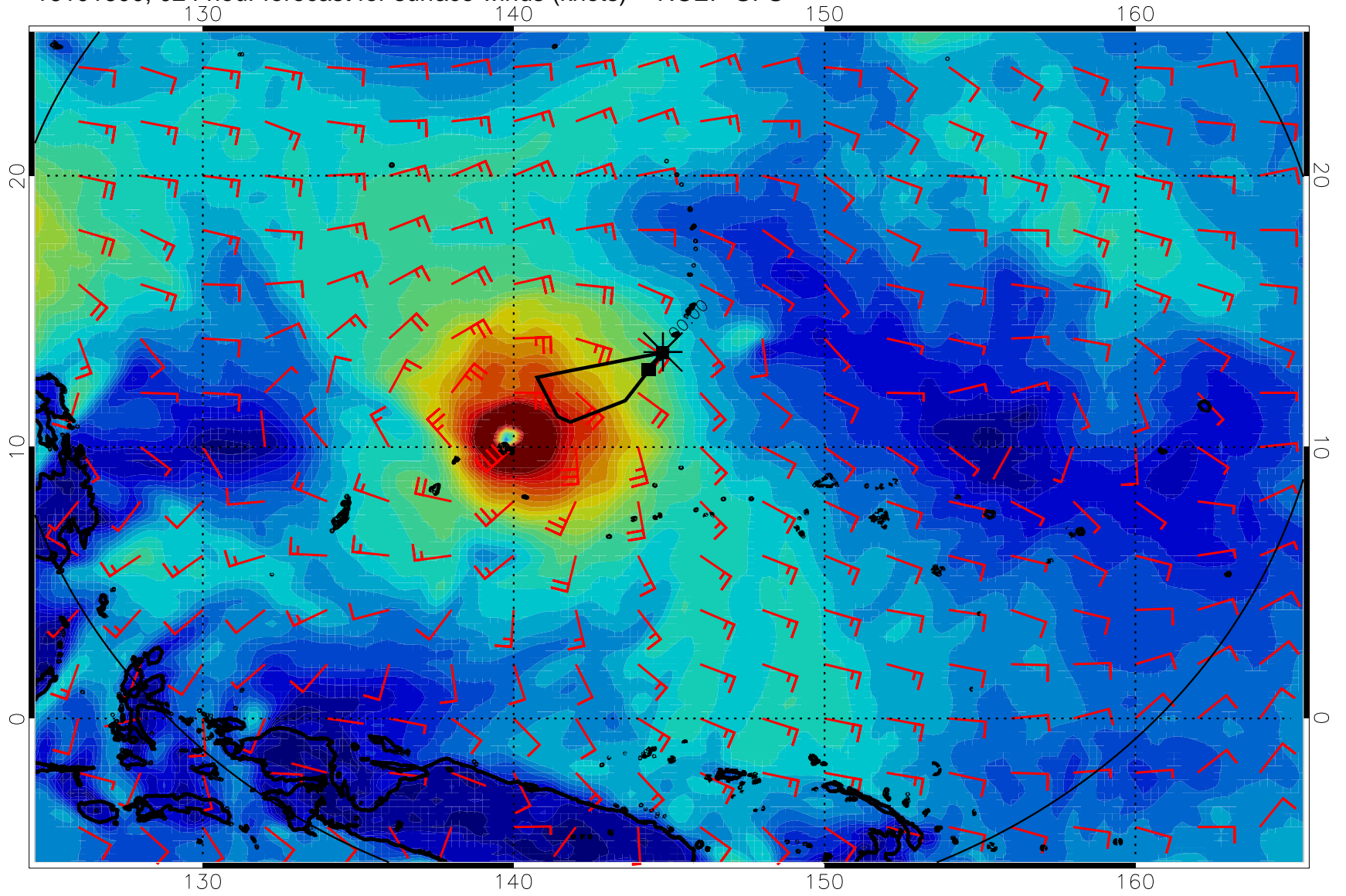
0 10 20 30  
Surface Wind Speed, knots

16101518, 018 hour forecast for surface winds (knots) -- NCEP GFS



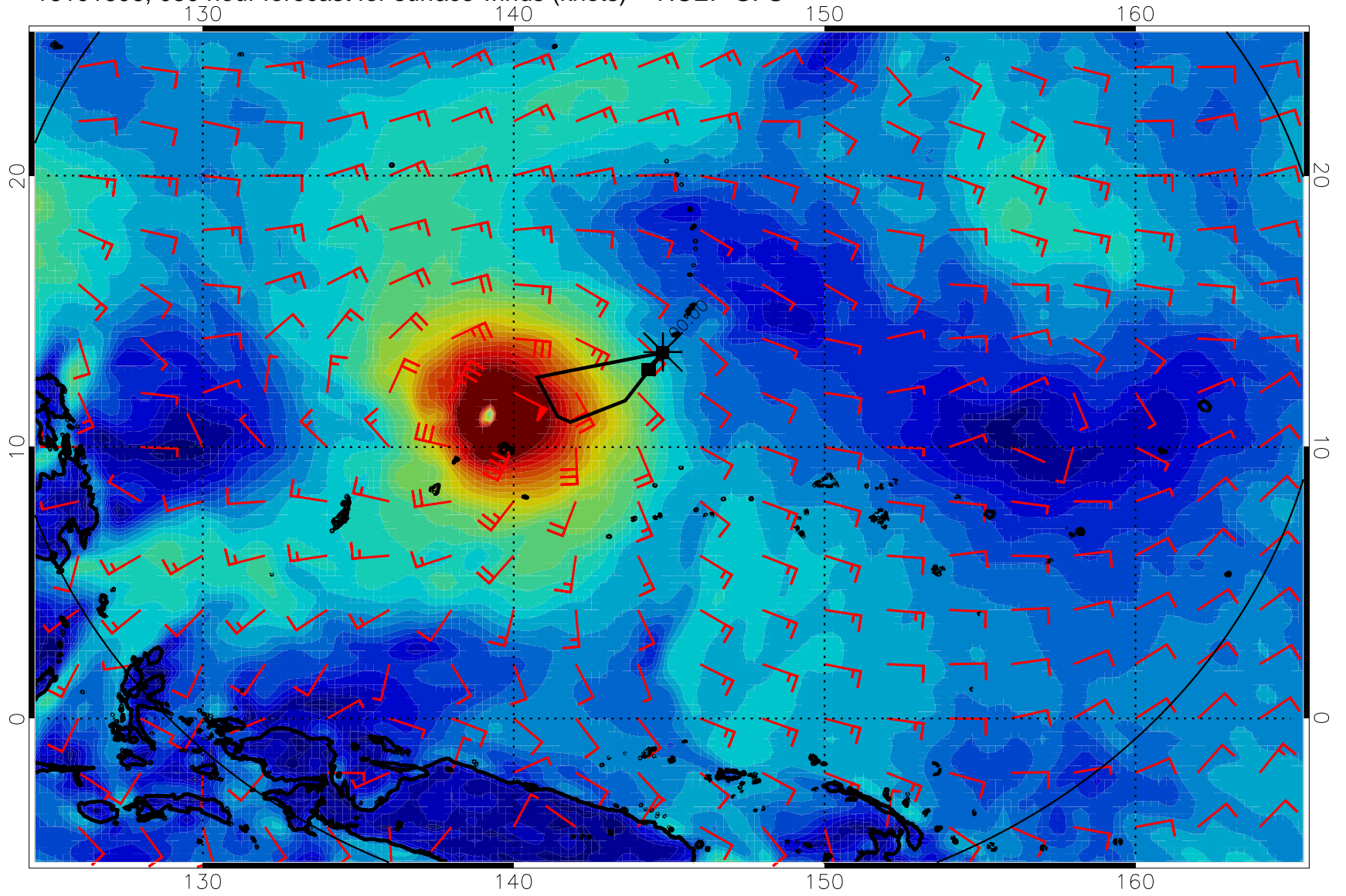
0 10 20 30  
Surface Wind Speed, knots

16101600, 024 hour forecast for surface winds (knots) -- NCEP GFS



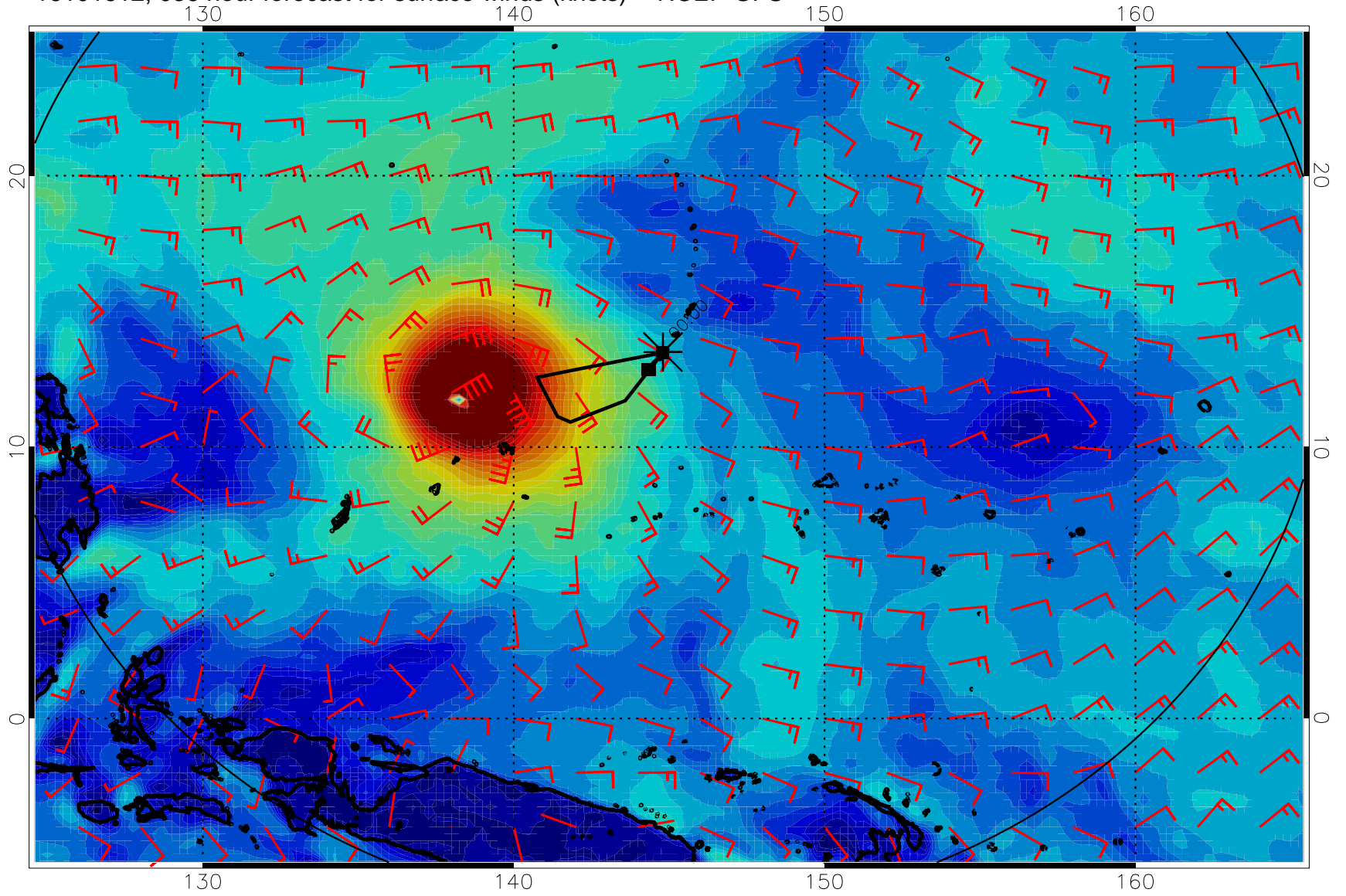
0 10 20 30  
Surface Wind Speed, knots

16101606, 030 hour forecast for surface winds (knots) -- NCEP GFS



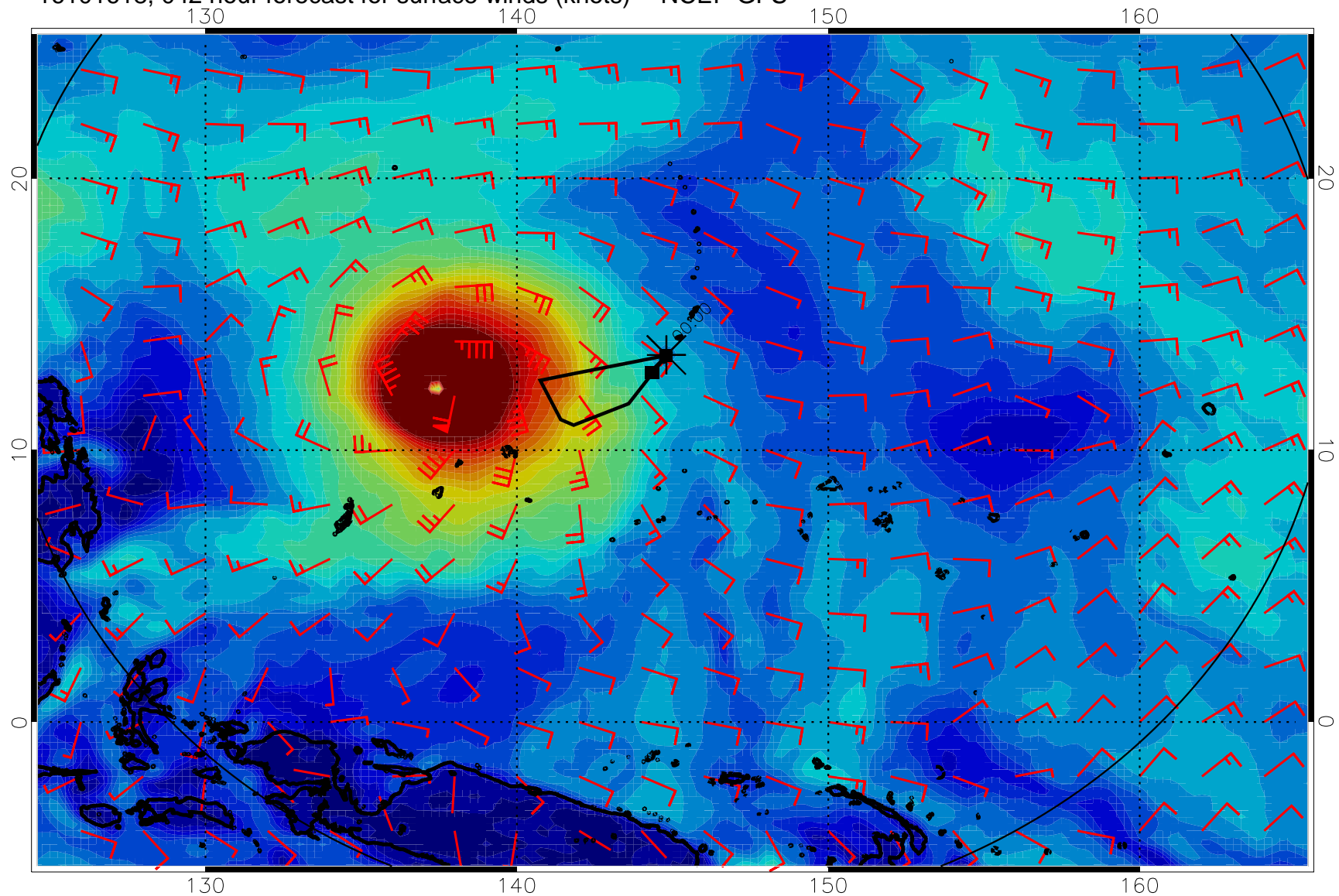
0      10      20      30  
Surface Wind Speed, knots

16101612, 036 hour forecast for surface winds (knots) -- NCEP GFS



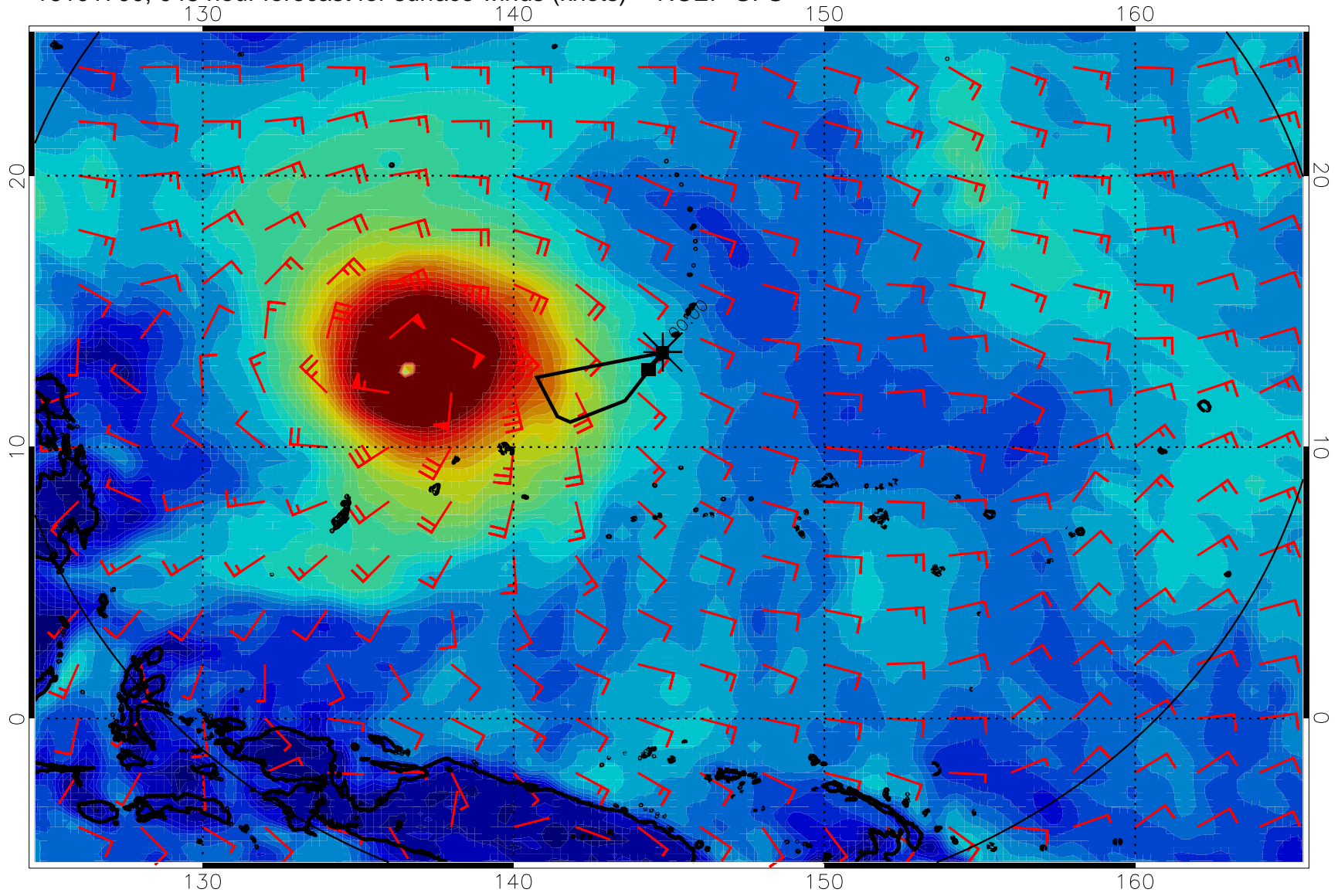
0      10      20      30  
Surface Wind Speed, knots

16101618, 042 hour forecast for surface winds (knots) -- NCEP GFS



Surface Wind Speed, knots

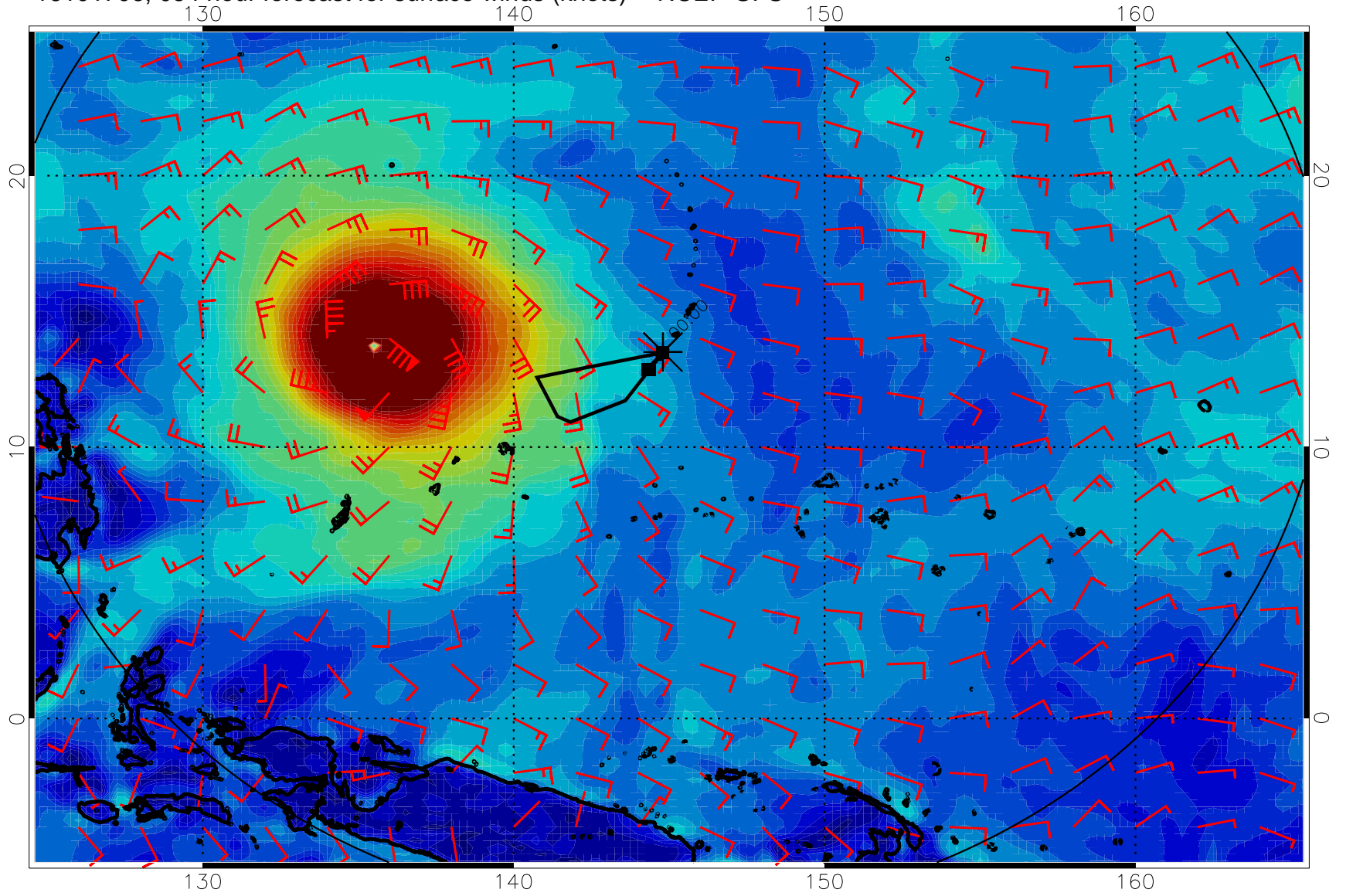
16101700, 048 hour forecast for surface winds (knots) -- NCEP GFS



0      10      20      30  
Surface Wind Speed, knots

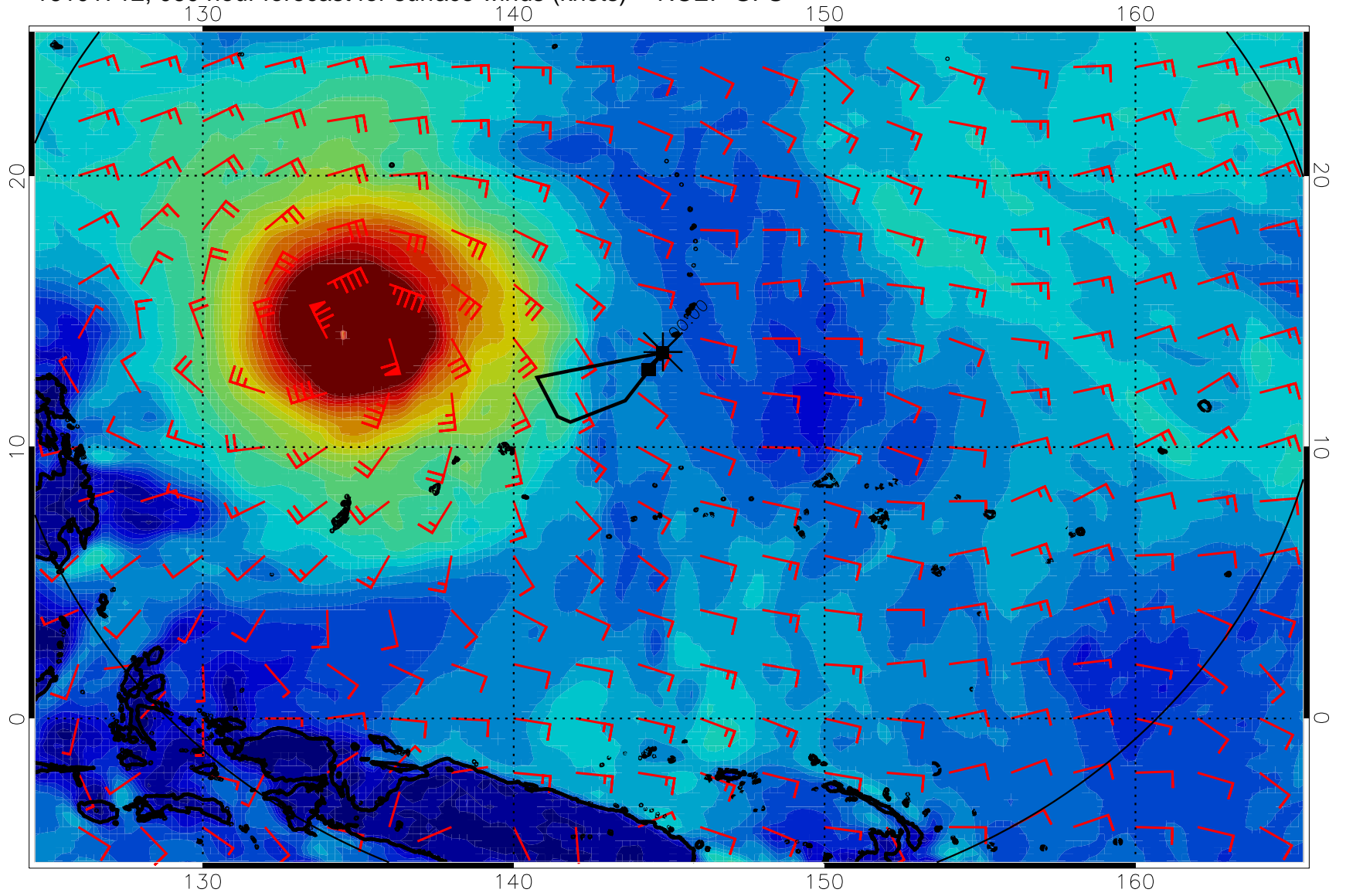


16101706, 054 hour forecast for surface winds (knots) -- NCEP GFS



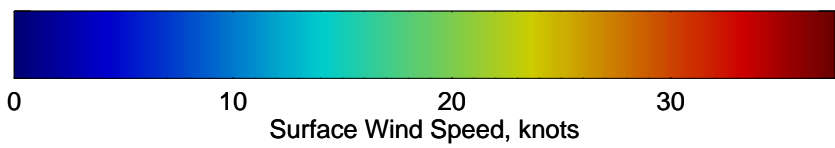
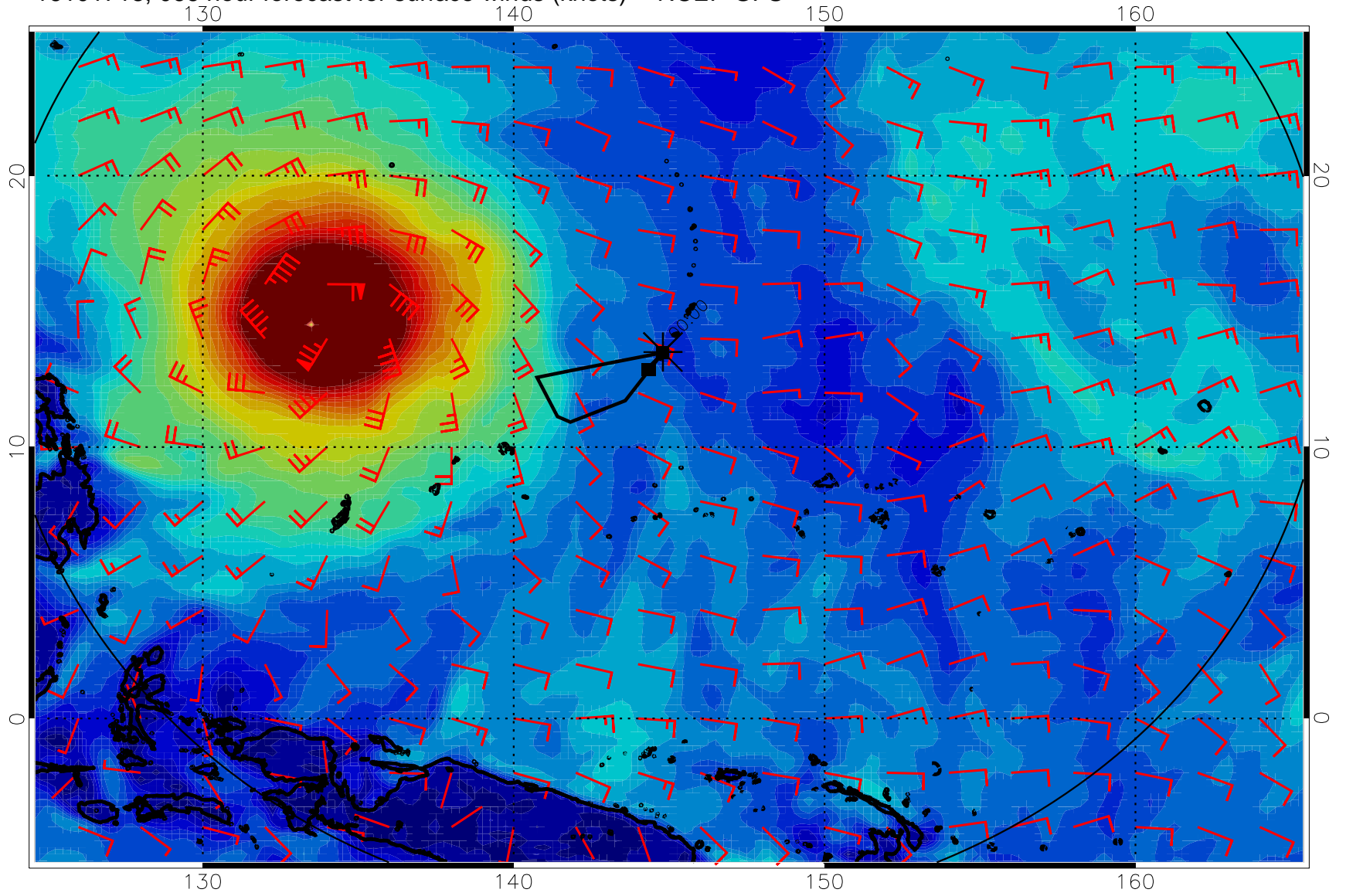
0      10      20      30  
Surface Wind Speed, knots

16101712, 060 hour forecast for surface winds (knots) -- NCEP GFS

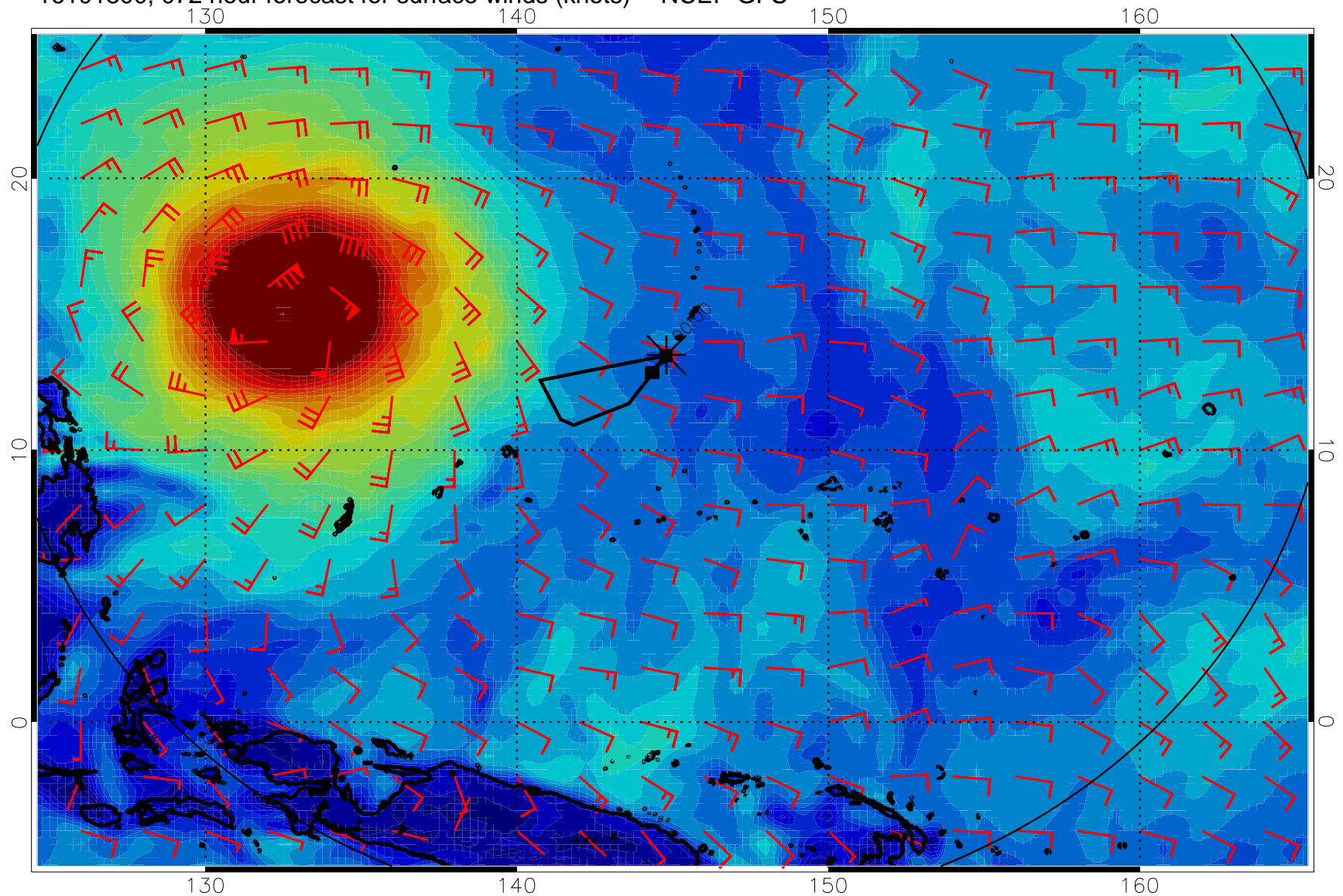


0      10      20      30  
Surface Wind Speed, knots

16101718, 066 hour forecast for surface winds (knots) -- NCEP GFS

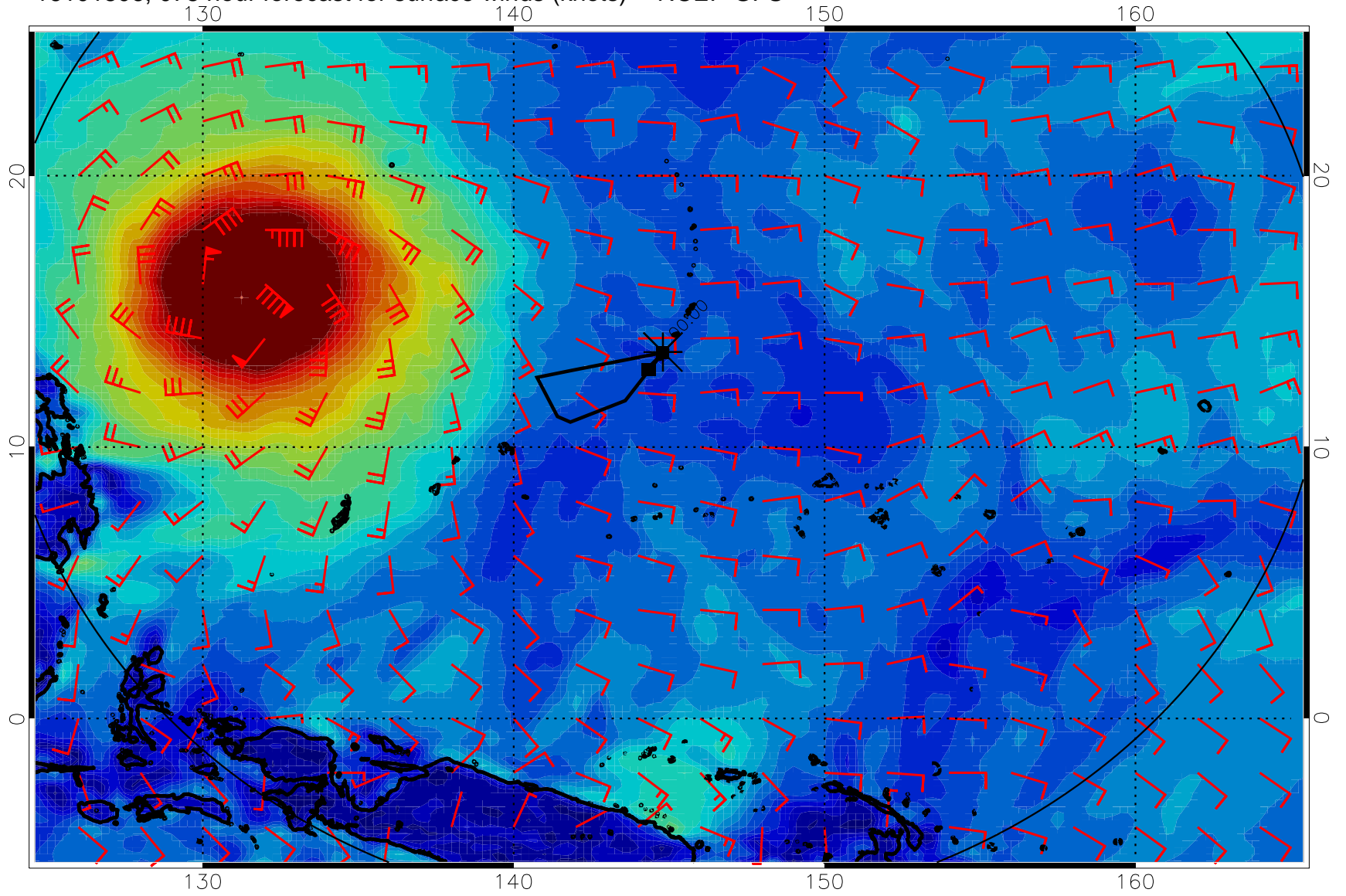


16101800, 072 hour forecast for surface winds (knots) -- NCEP GFS



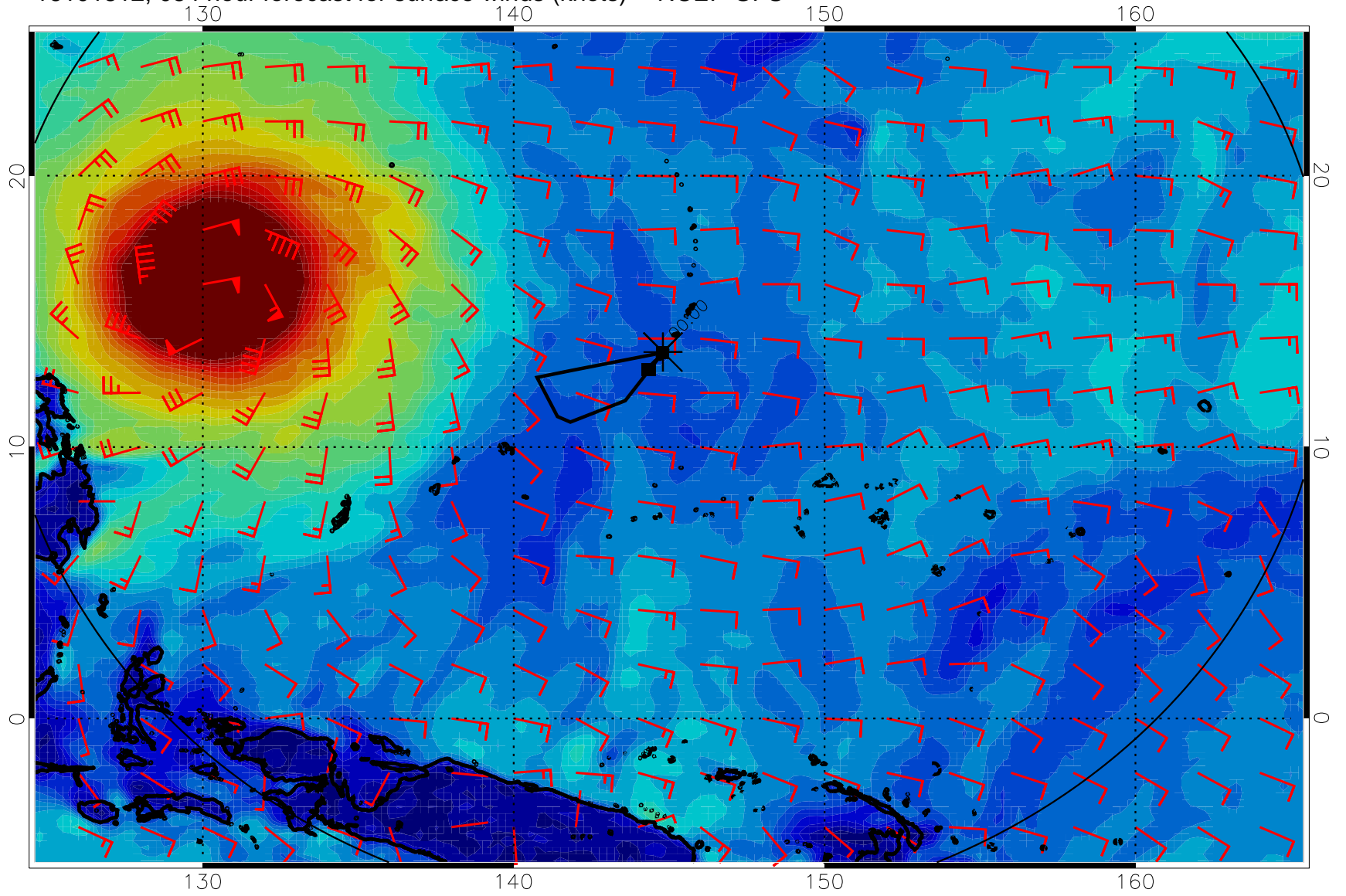
0 10 20 30  
Surface Wind Speed, knots

16101806, 078 hour forecast for surface winds (knots) -- NCEP GFS



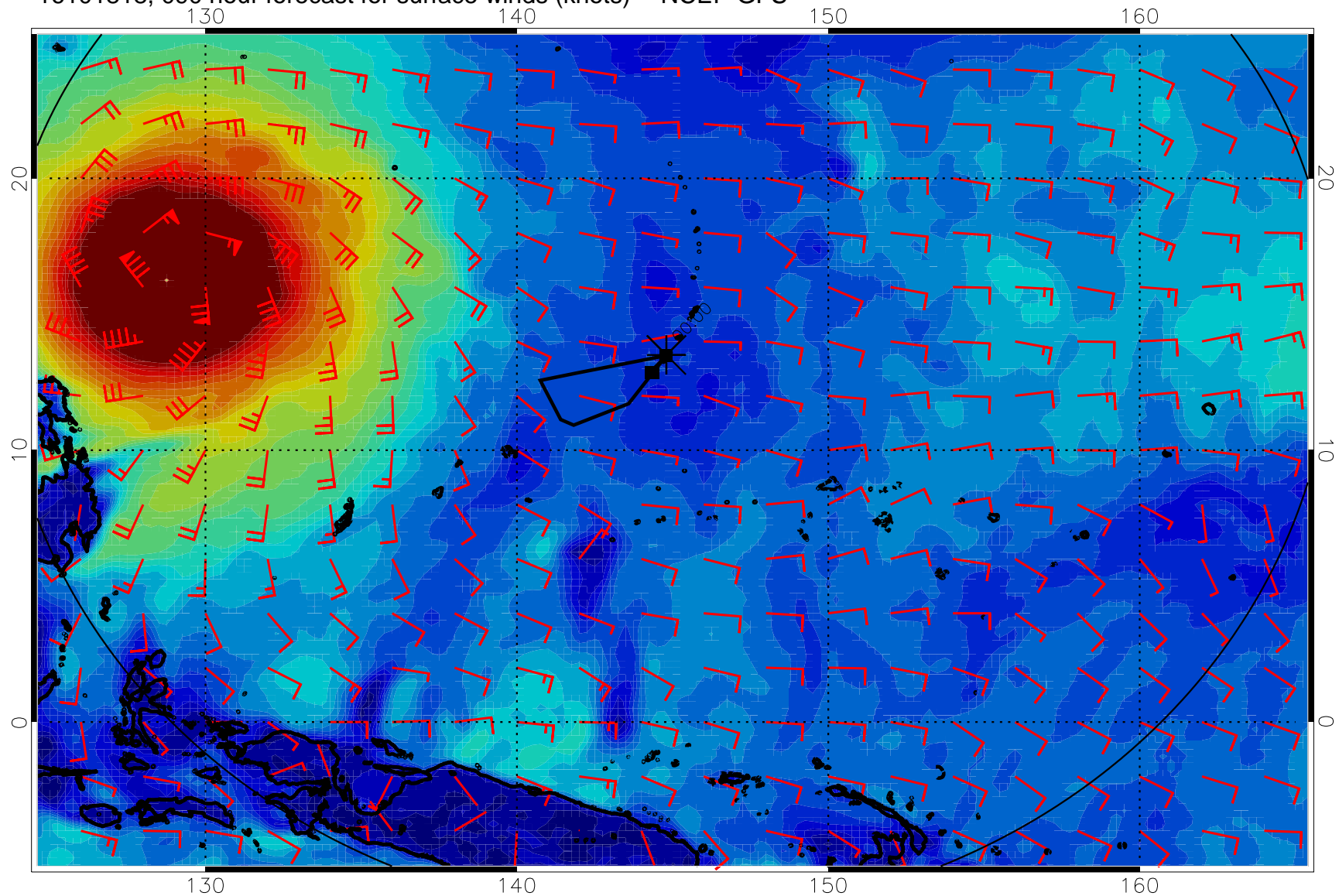
0      10      20      30  
Surface Wind Speed, knots

16101812, 084 hour forecast for surface winds (knots) -- NCEP GFS



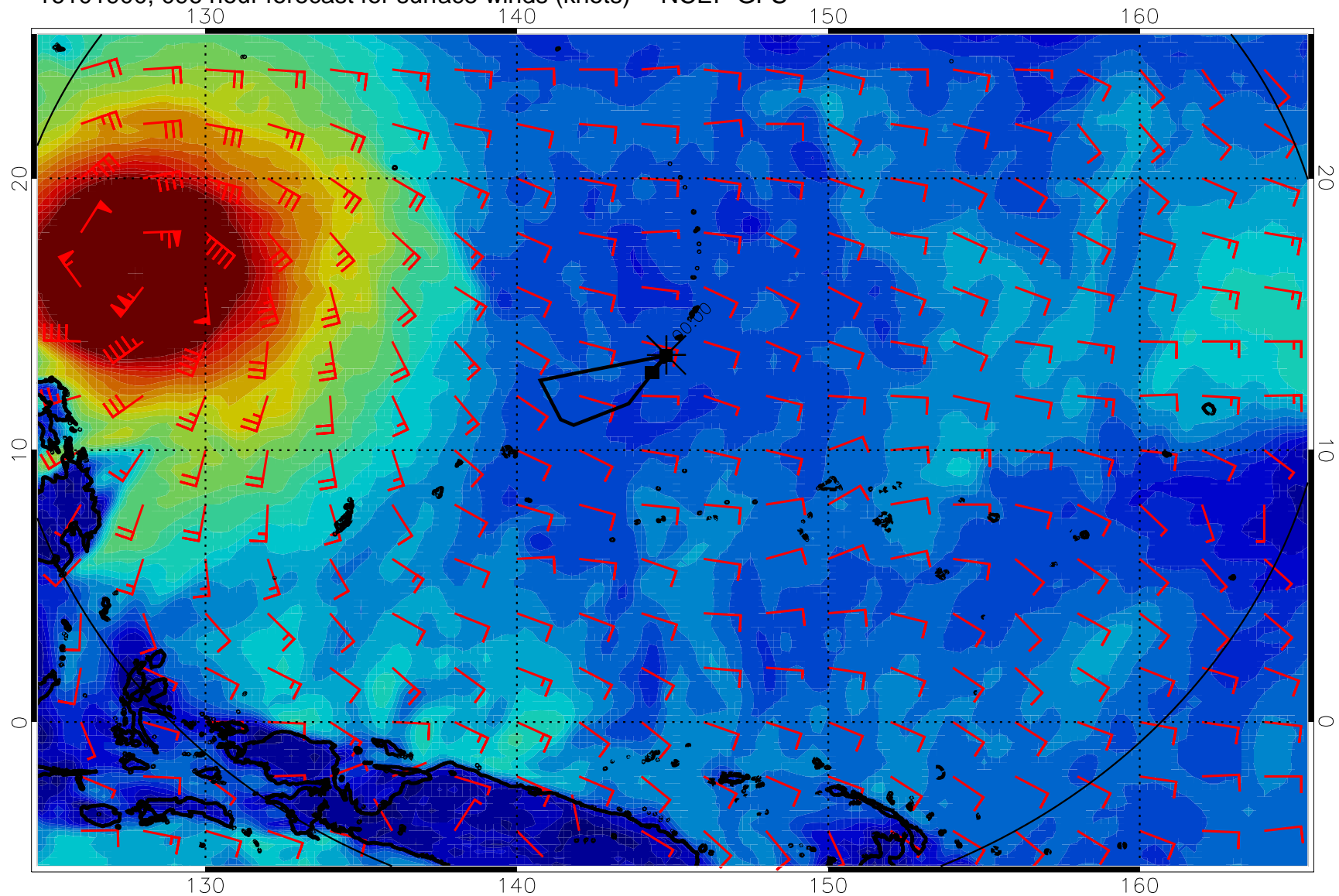
0      10      20      30  
Surface Wind Speed, knots

16101818, 090 hour forecast for surface winds (knots) -- NCEP GFS



0 10 20 30  
Surface Wind Speed, knots

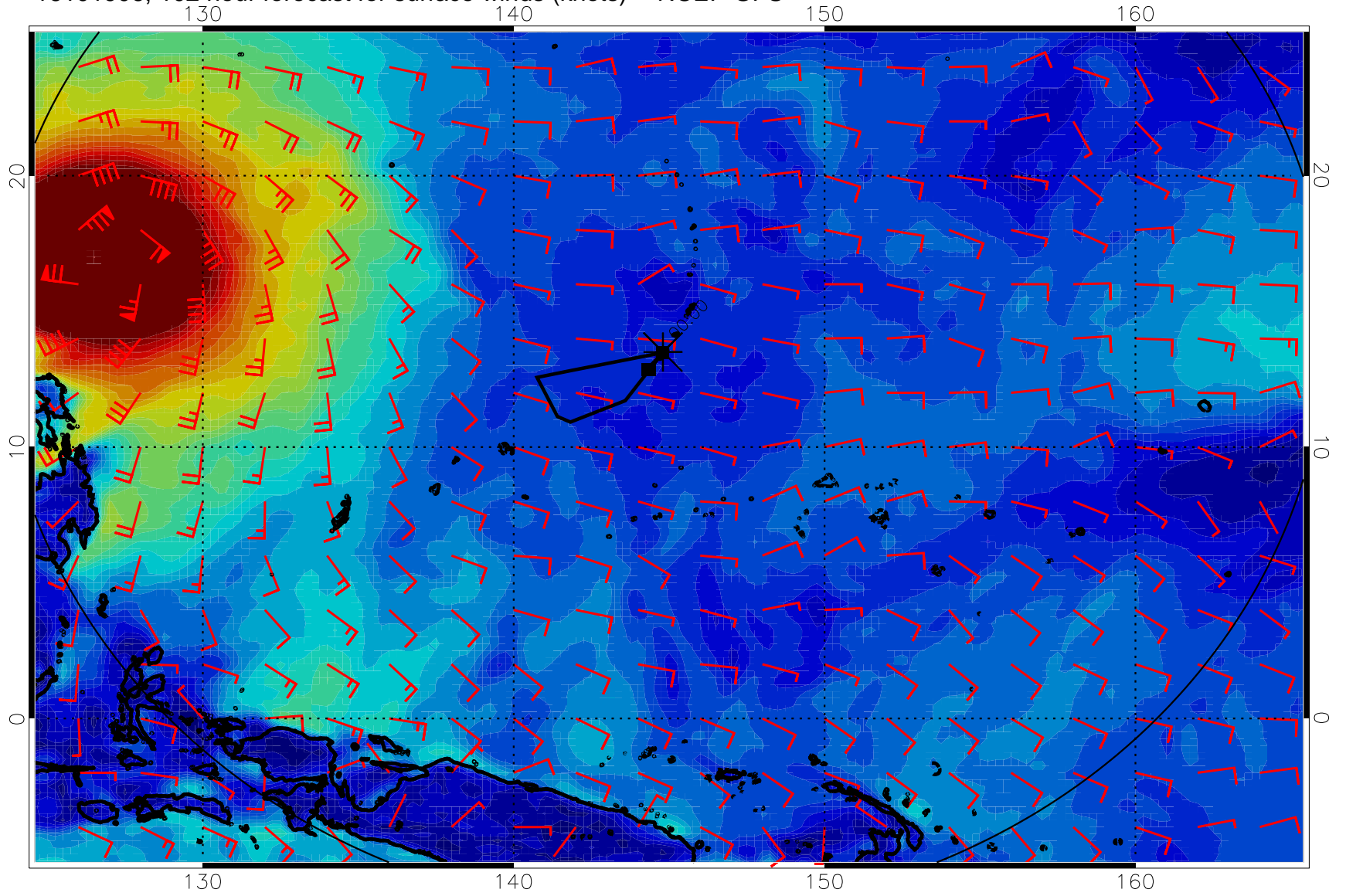
16101900, 096 hour forecast for surface winds (knots) -- NCEP GFS



0 10 20 30  
Surface Wind Speed, knots

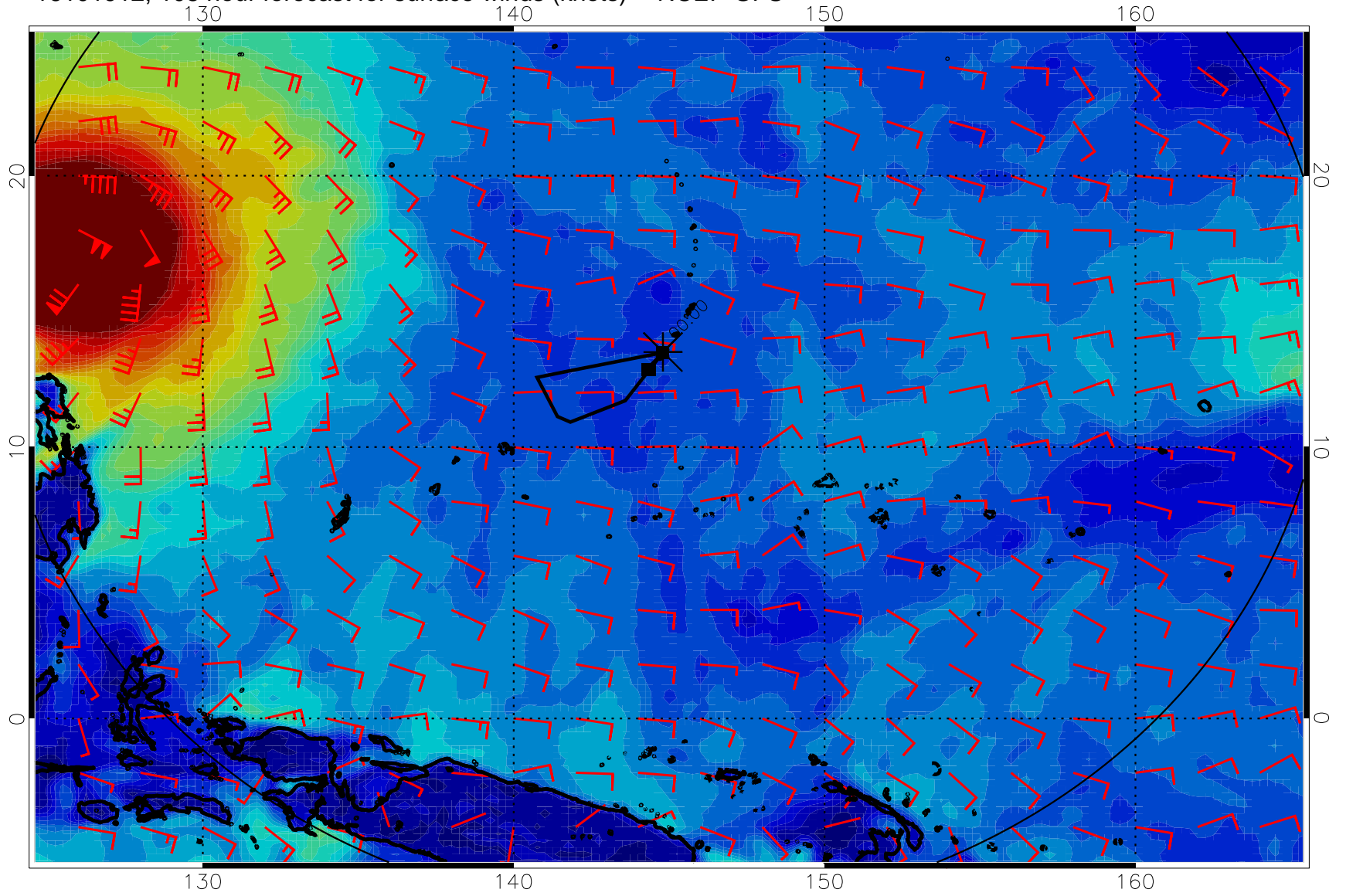


16101906, 102 hour forecast for surface winds (knots) -- NCEP GFS



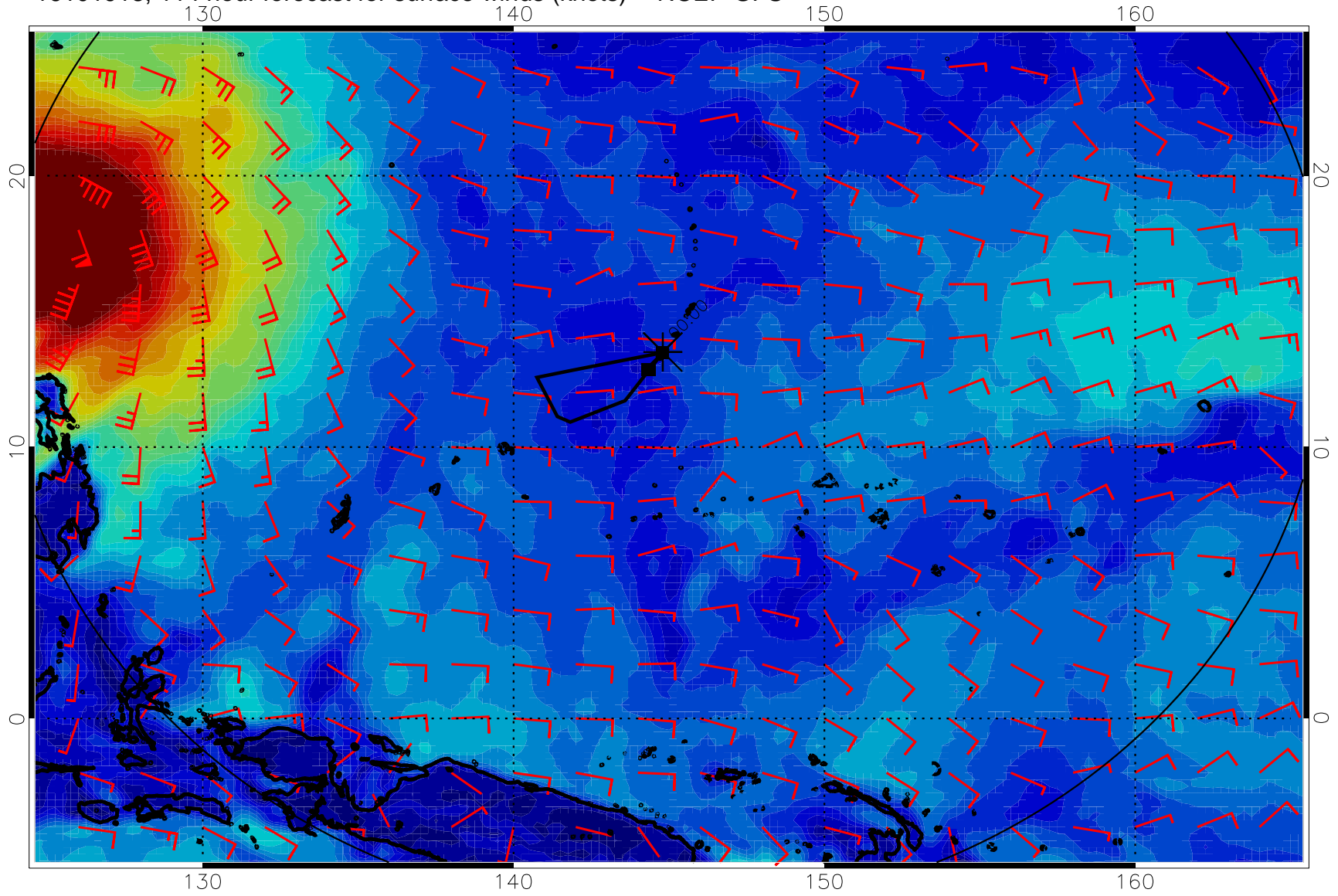
0      10      20      30  
Surface Wind Speed, knots

16101912, 108 hour forecast for surface winds (knots) -- NCEP GFS



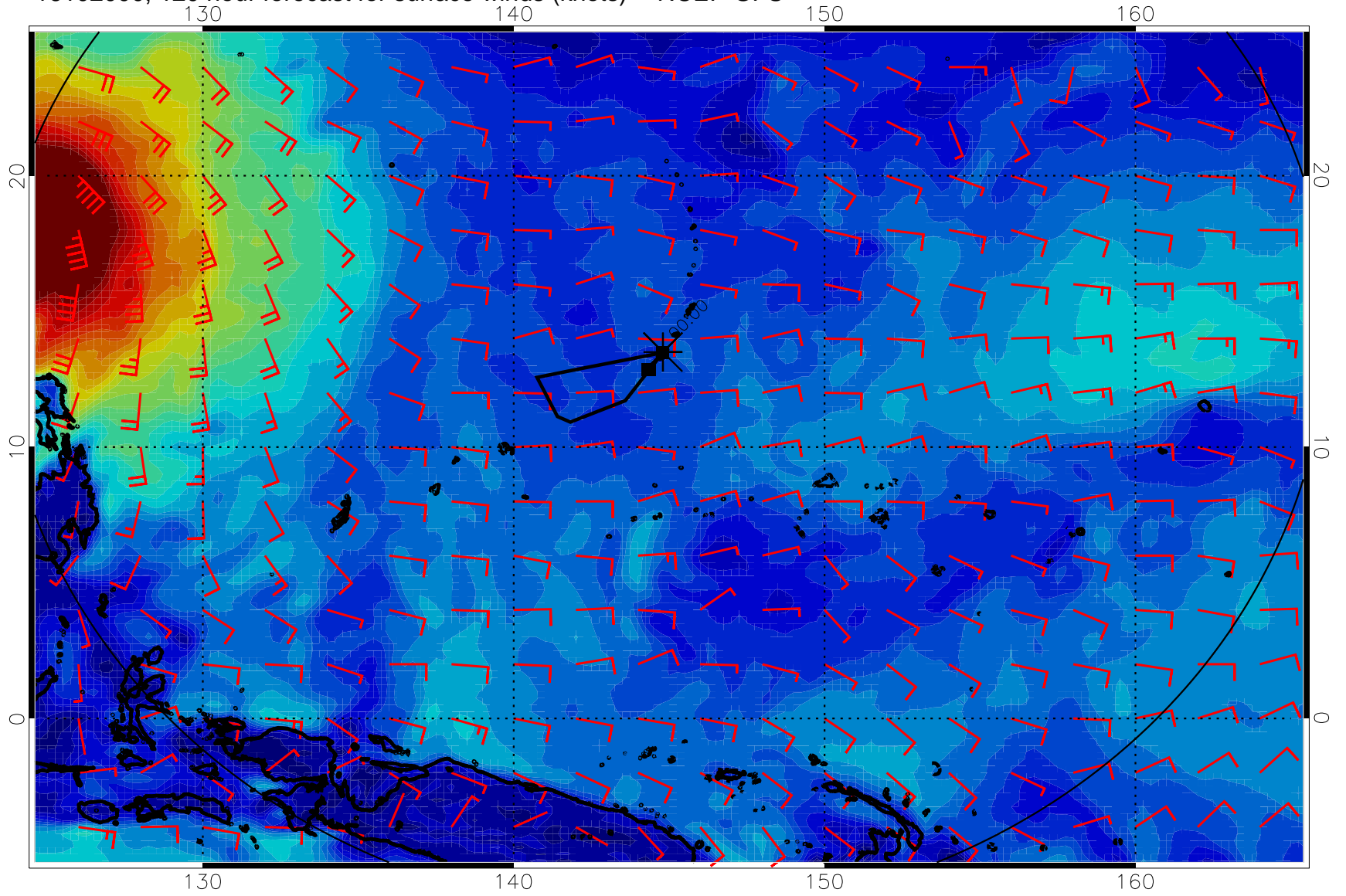
0 10 20 30  
Surface Wind Speed, knots

16101918, 114 hour forecast for surface winds (knots) -- NCEP GFS



0 10 20 30  
Surface Wind Speed, knots

16102000, 120 hour forecast for surface winds (knots) -- NCEP GFS



0 10 20 30  
Surface Wind Speed, knots