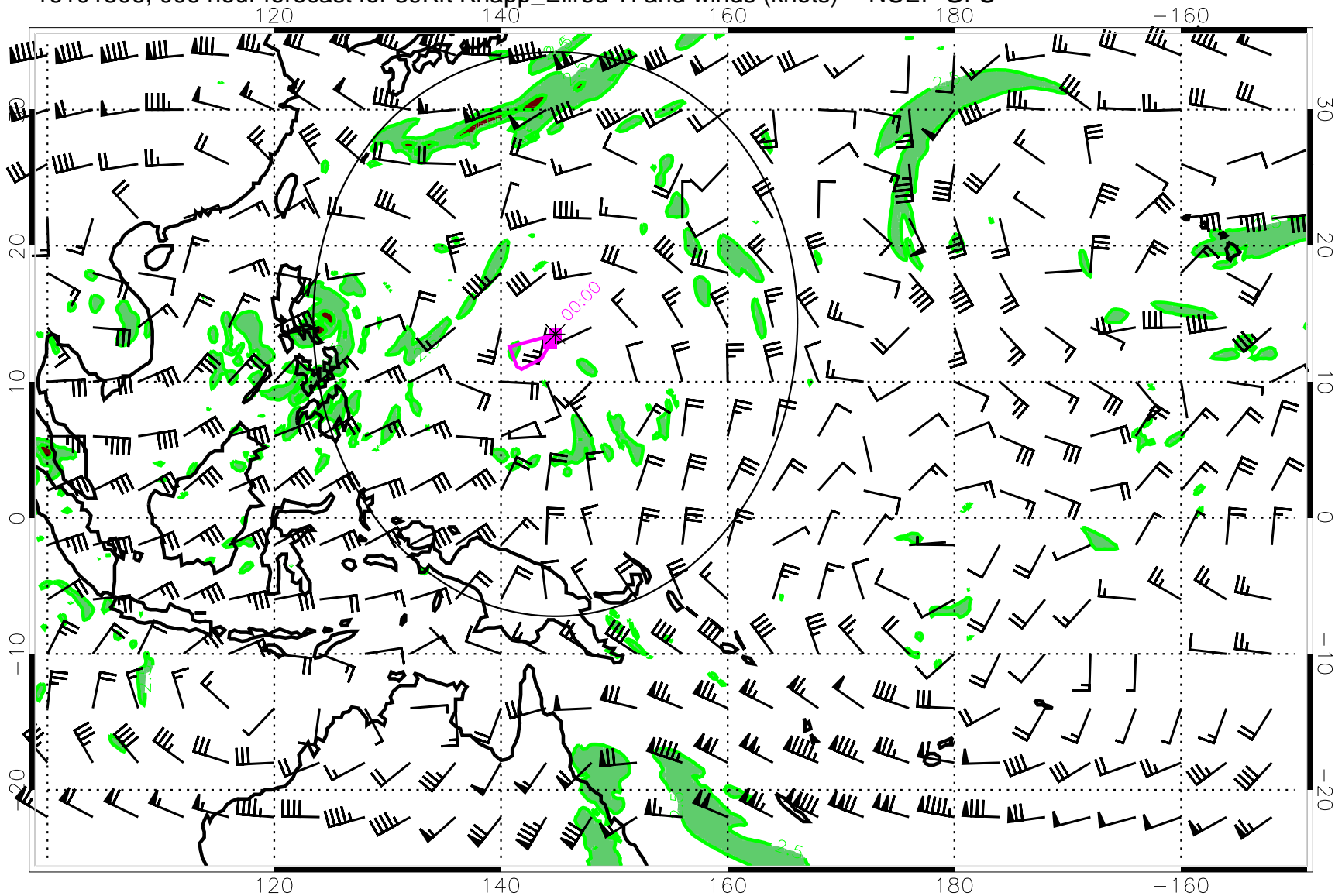
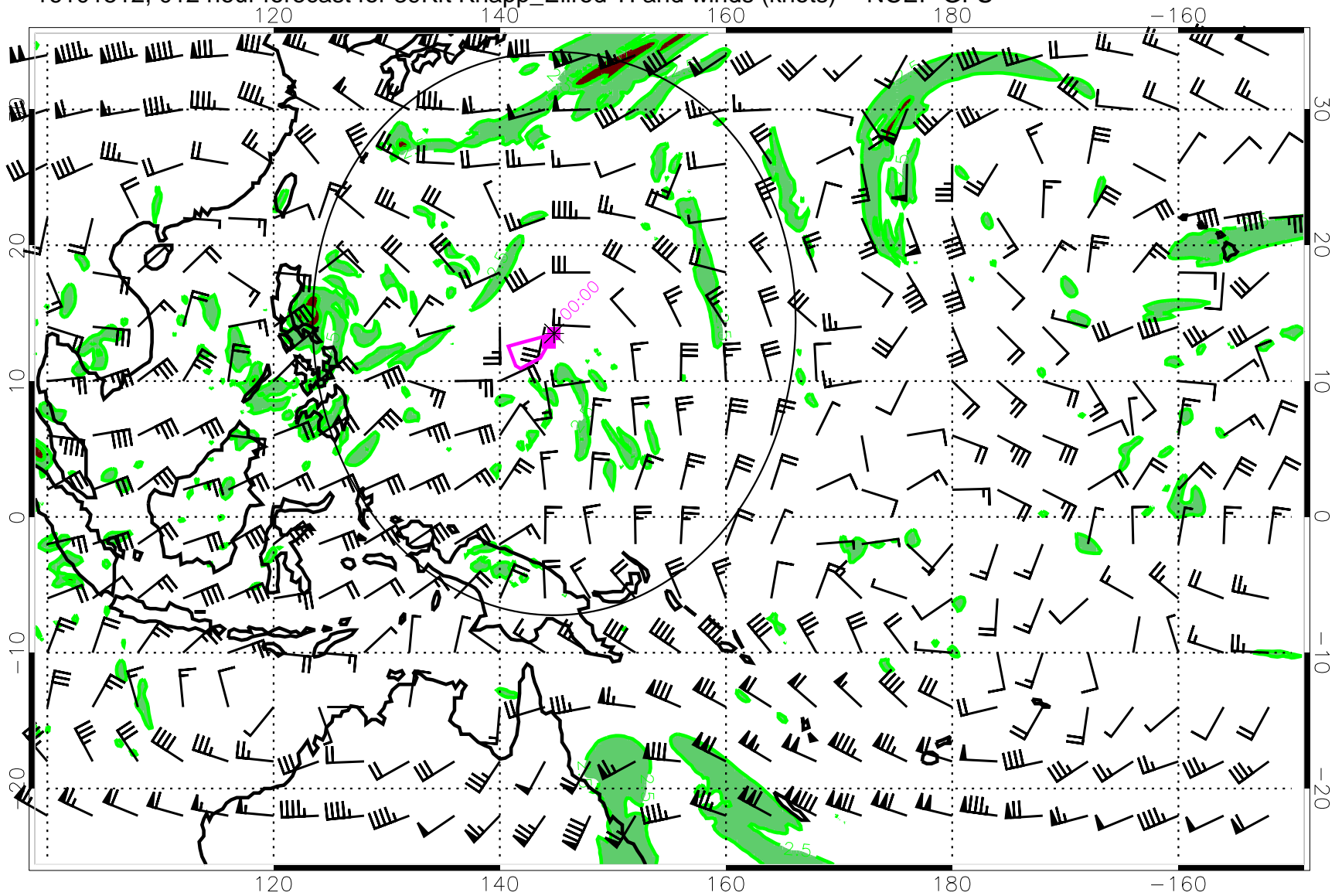


16101506, 006 hour forecast for 39Kft Knapp_Ellrod TI and winds (knots) -- NCEP GFS



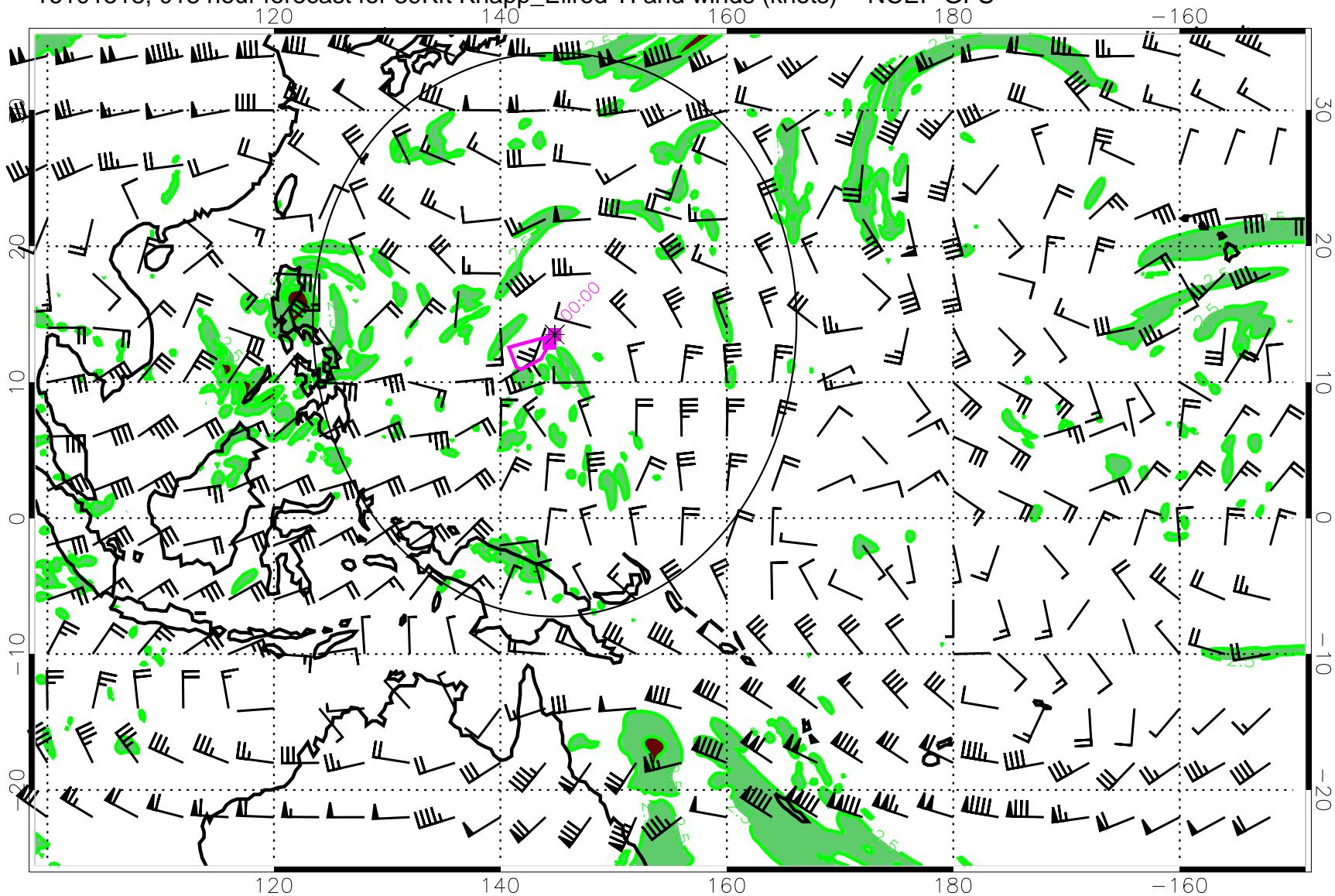
Turb value = 7 Turb value = 2.5

16101512, 012 hour forecast for 39Kft Knapp_Ellrod TI and winds (knots) -- NCEP GFS



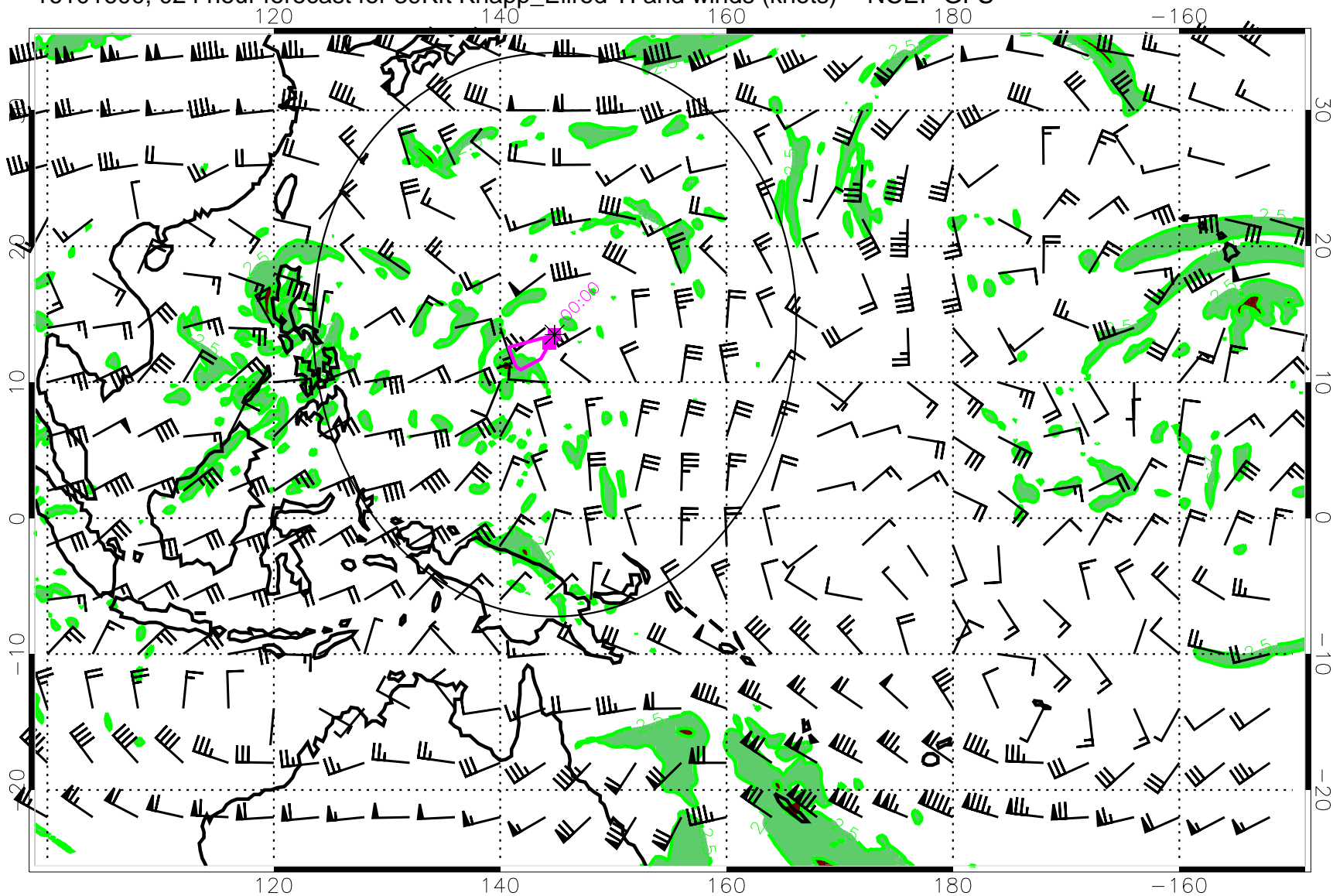
Turb value = 7 Turb value = 2.5

16101518, 018 hour forecast for 39Kft Knapp_Ellrod TI and winds (knots) -- NCEP GFS



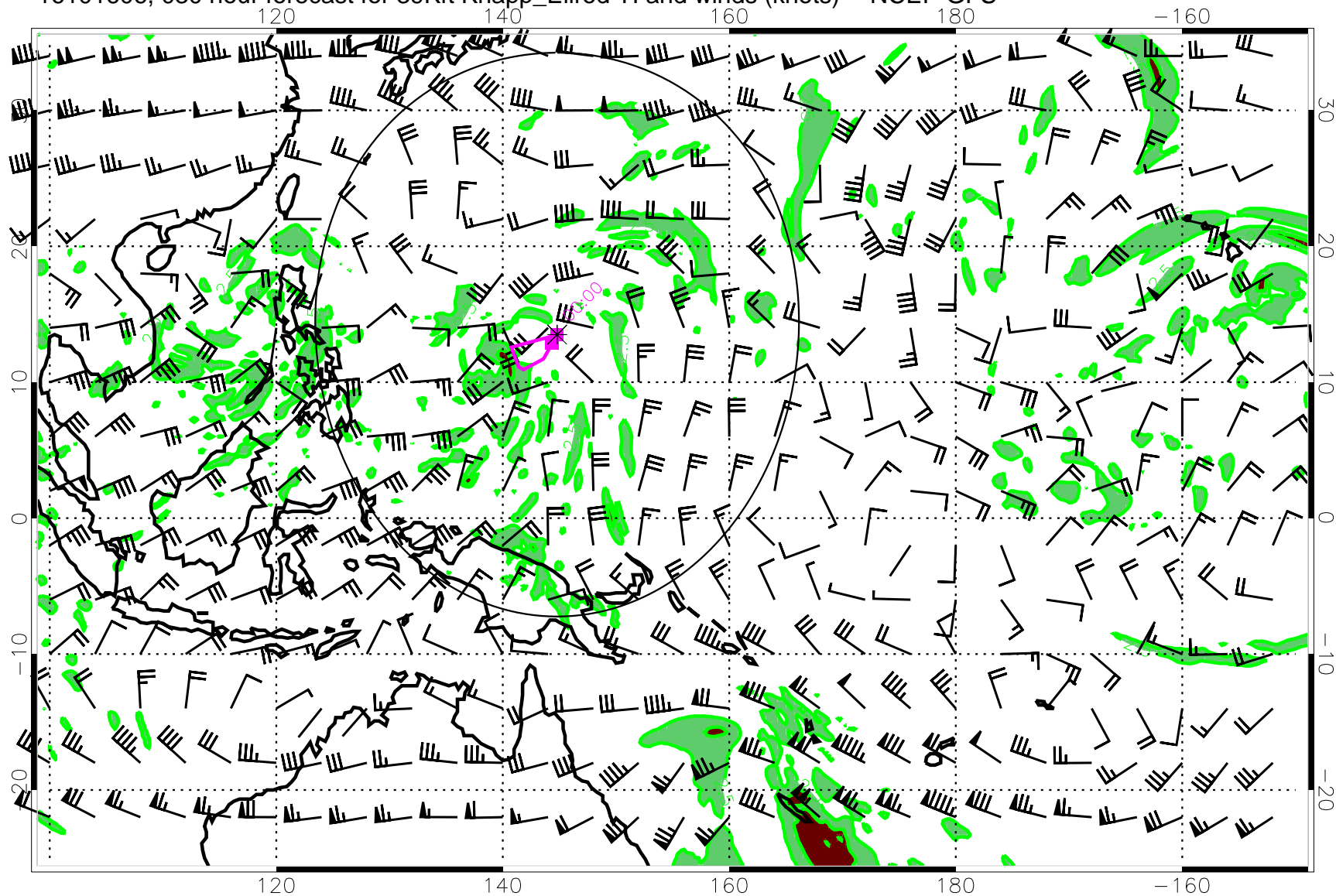
Turb value = 7 Turb value = 2.5

16101600, 024 hour forecast for 39Kft Knapp_Ellrod TI and winds (knots) -- NCEP GFS



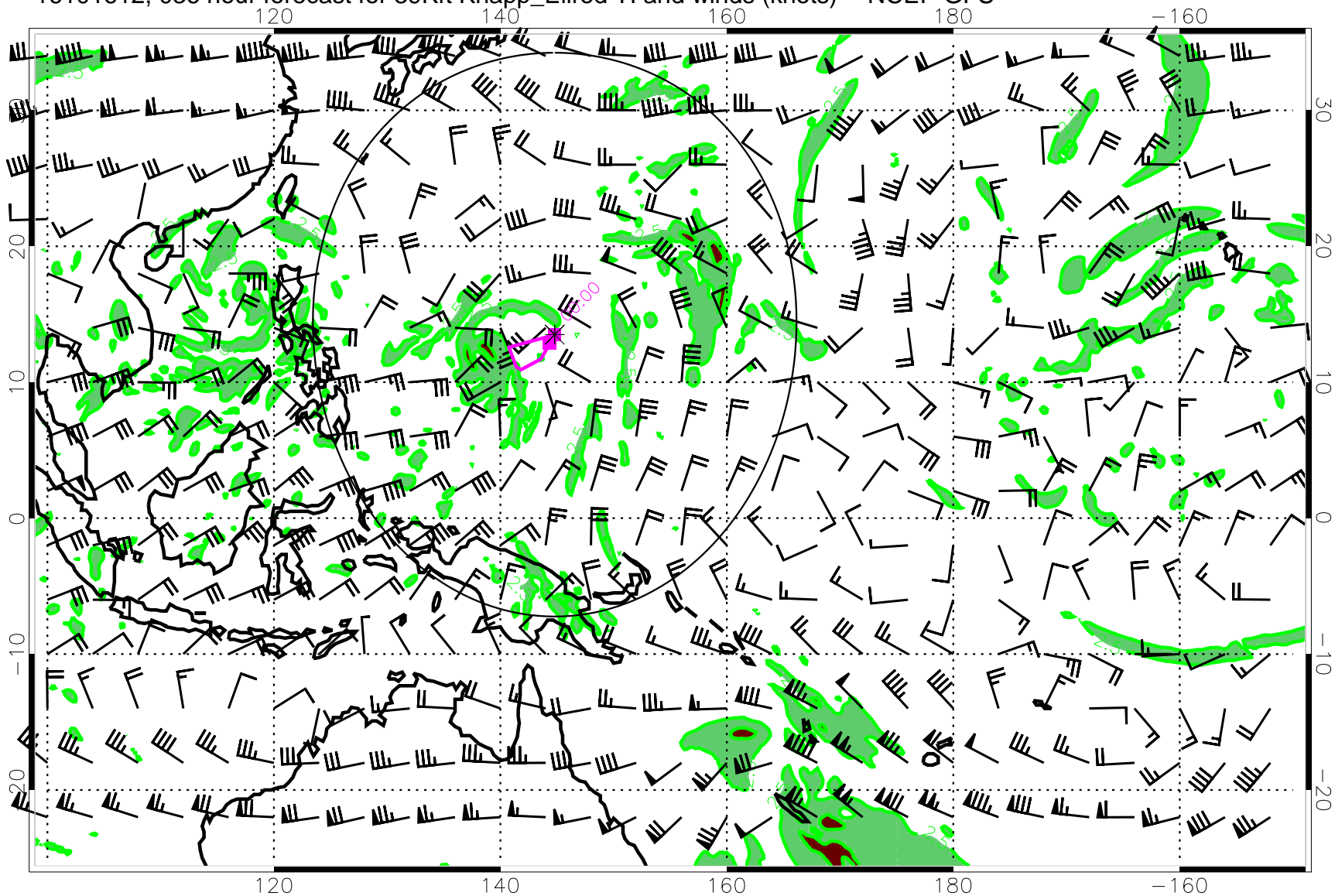
Turb value = 7 Turb value = 2.5

16101606, 030 hour forecast for 39Kft Knapp_Ellrod TI and winds (knots) -- NCEP GFS



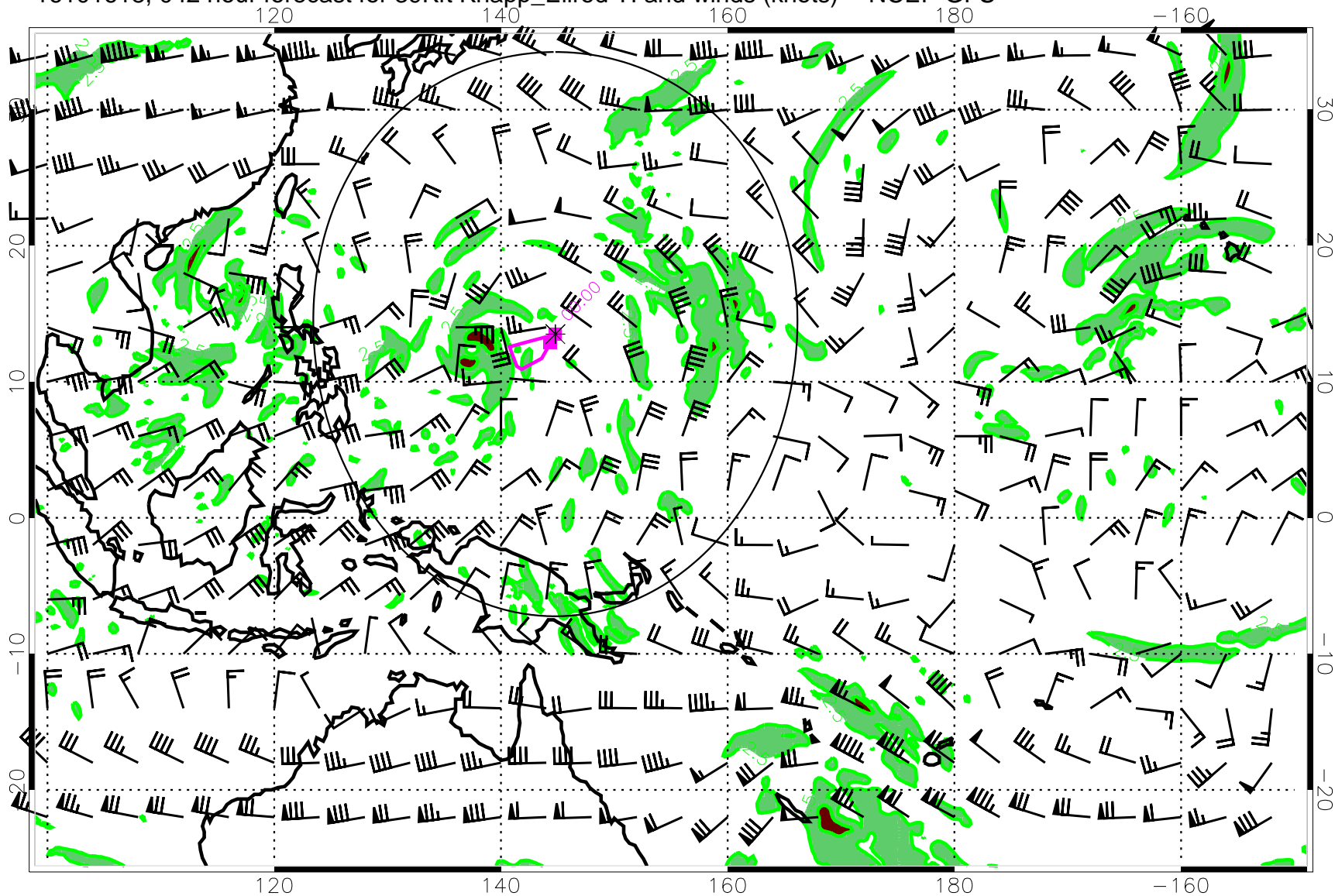
Turb value = 7 Turb value = 2.5

16101612, 036 hour forecast for 39Kft Knapp_Ellrod TI and winds (knots) -- NCEP GFS



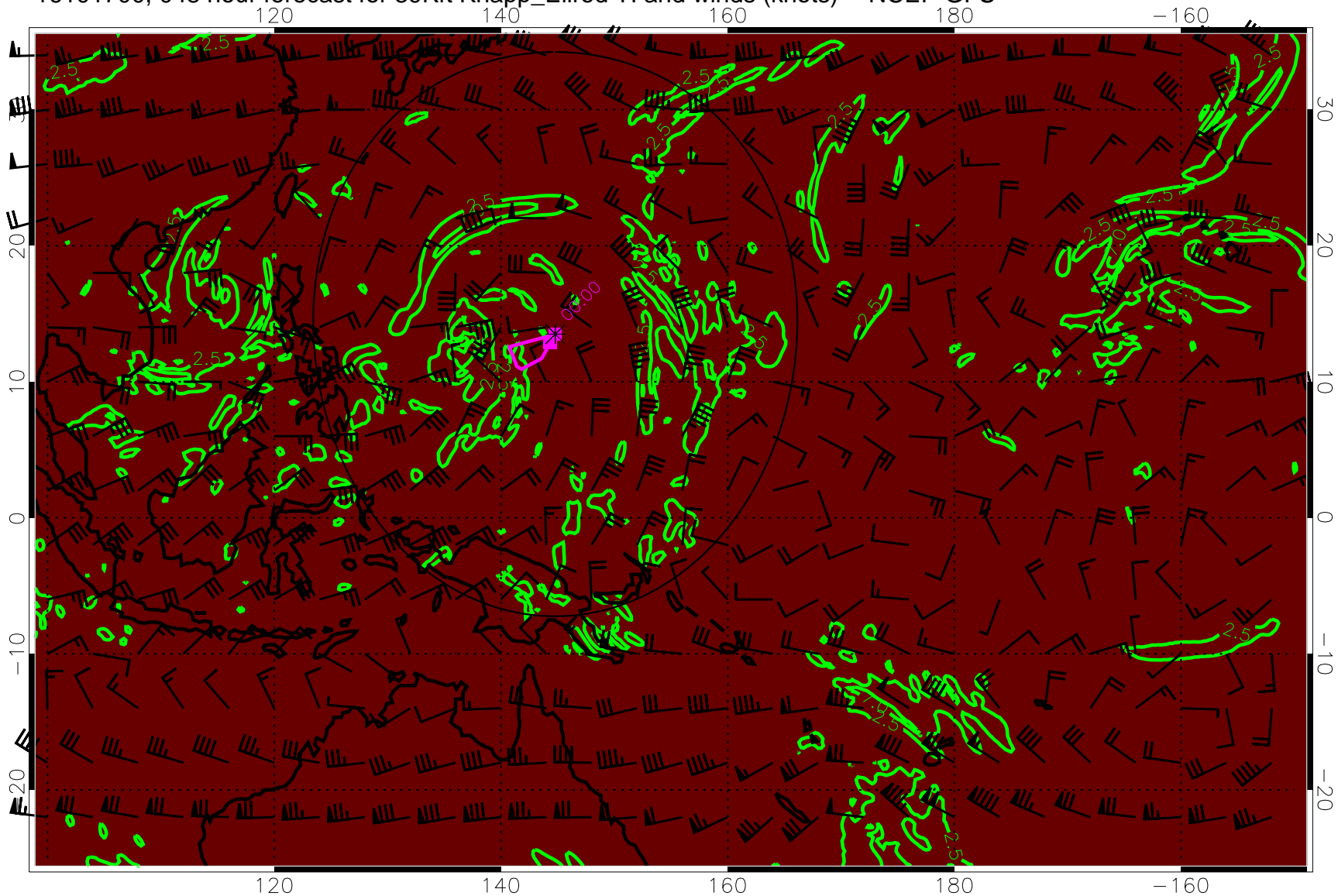
Turb value = 7 Turb value = 2.5

16101618, 042 hour forecast for 39Kft Knapp_Ellrod TI and winds (knots) -- NCEP GFS



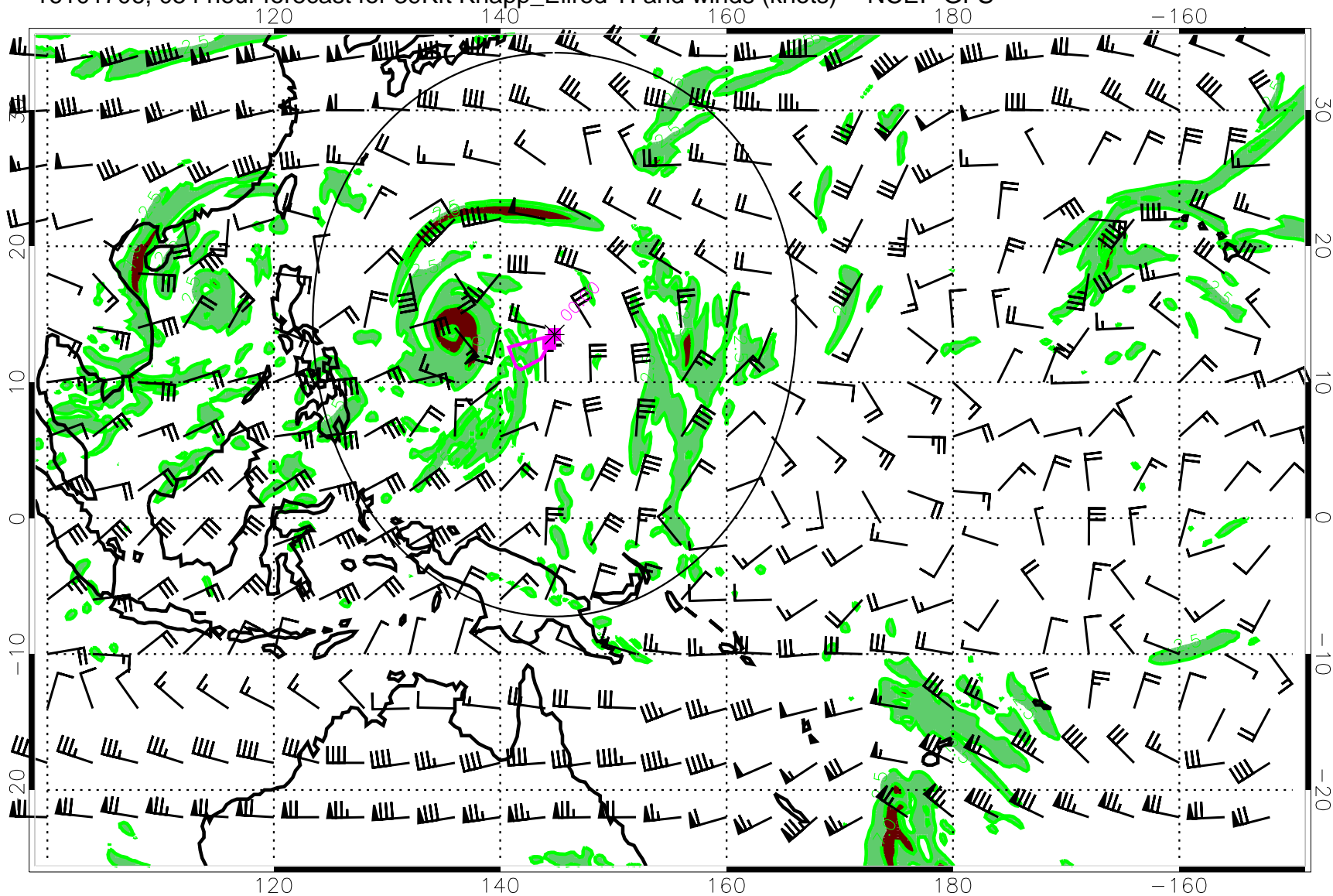
Turb value = 7 Turb value = 2.5

16101700, 048 hour forecast for 39Kft Knapp_Ellrod TI and winds (knots) -- NCEP GFS



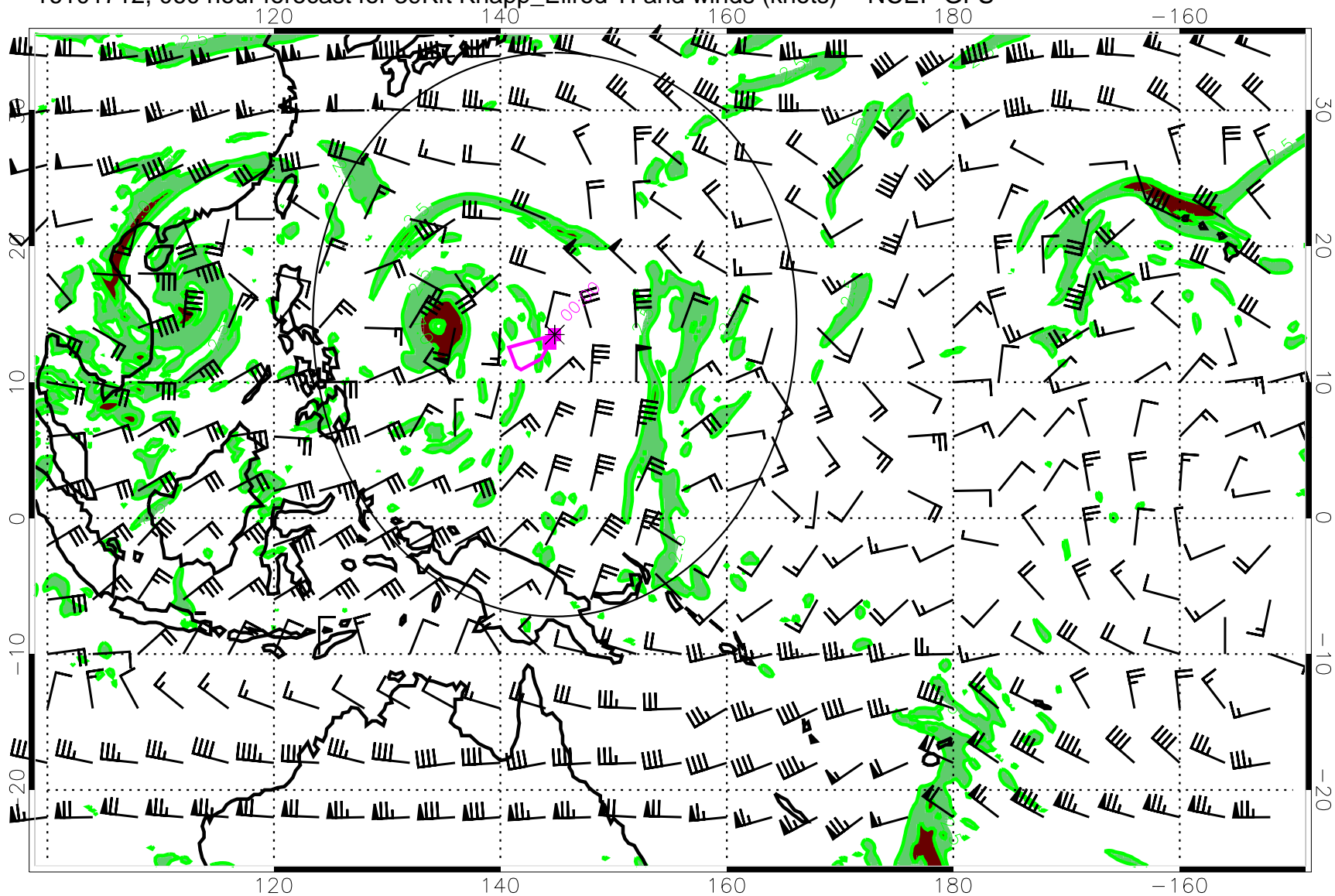
Turb value = 7 Turb value = 2.5

16101706, 054 hour forecast for 39Kft Knapp_Ellrod TI and winds (knots) -- NCEP GFS



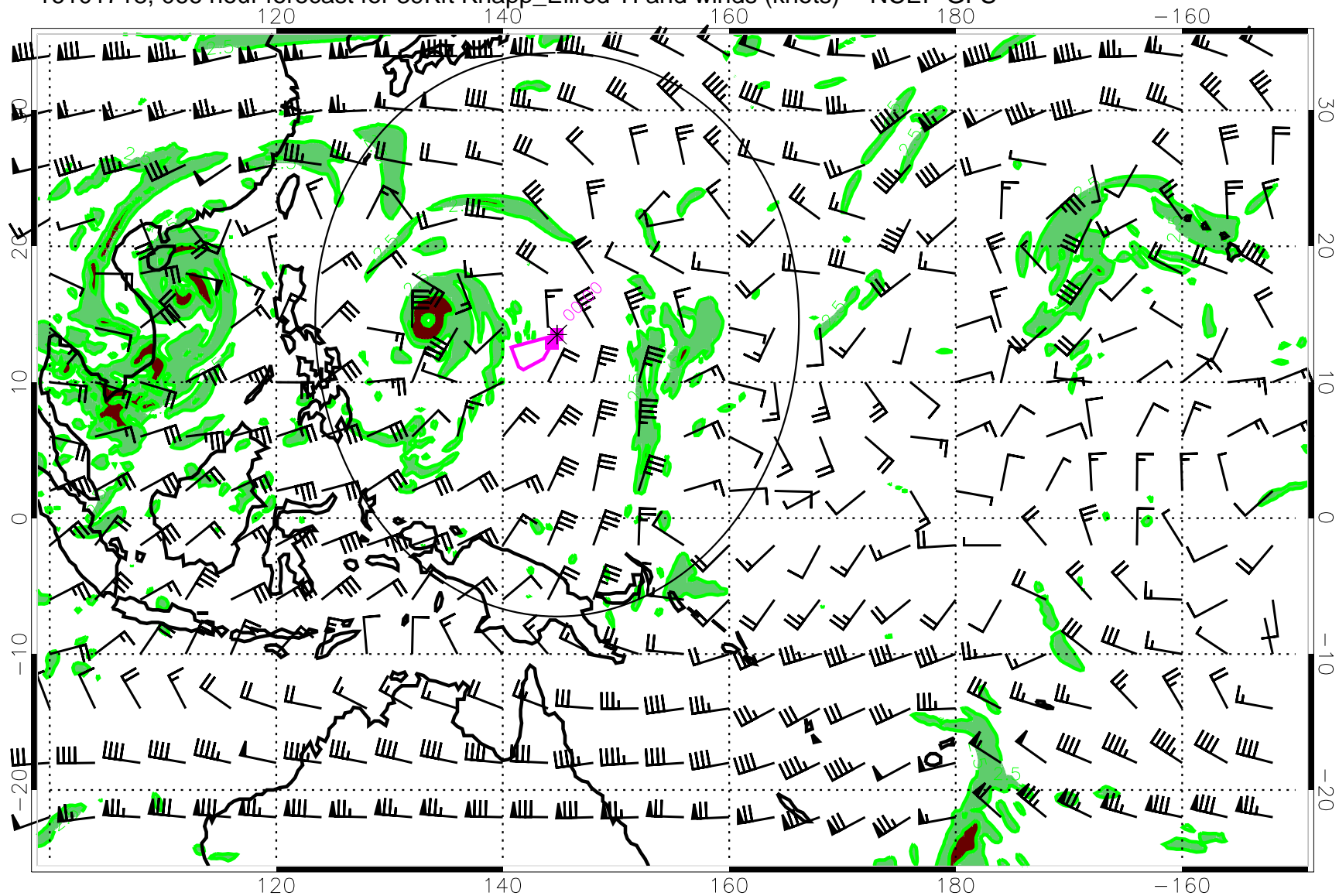
Turb value = 7 Turb value = 2.5

16101712, 060 hour forecast for 39Kft Knapp_Ellrod TI and winds (knots) -- NCEP GFS



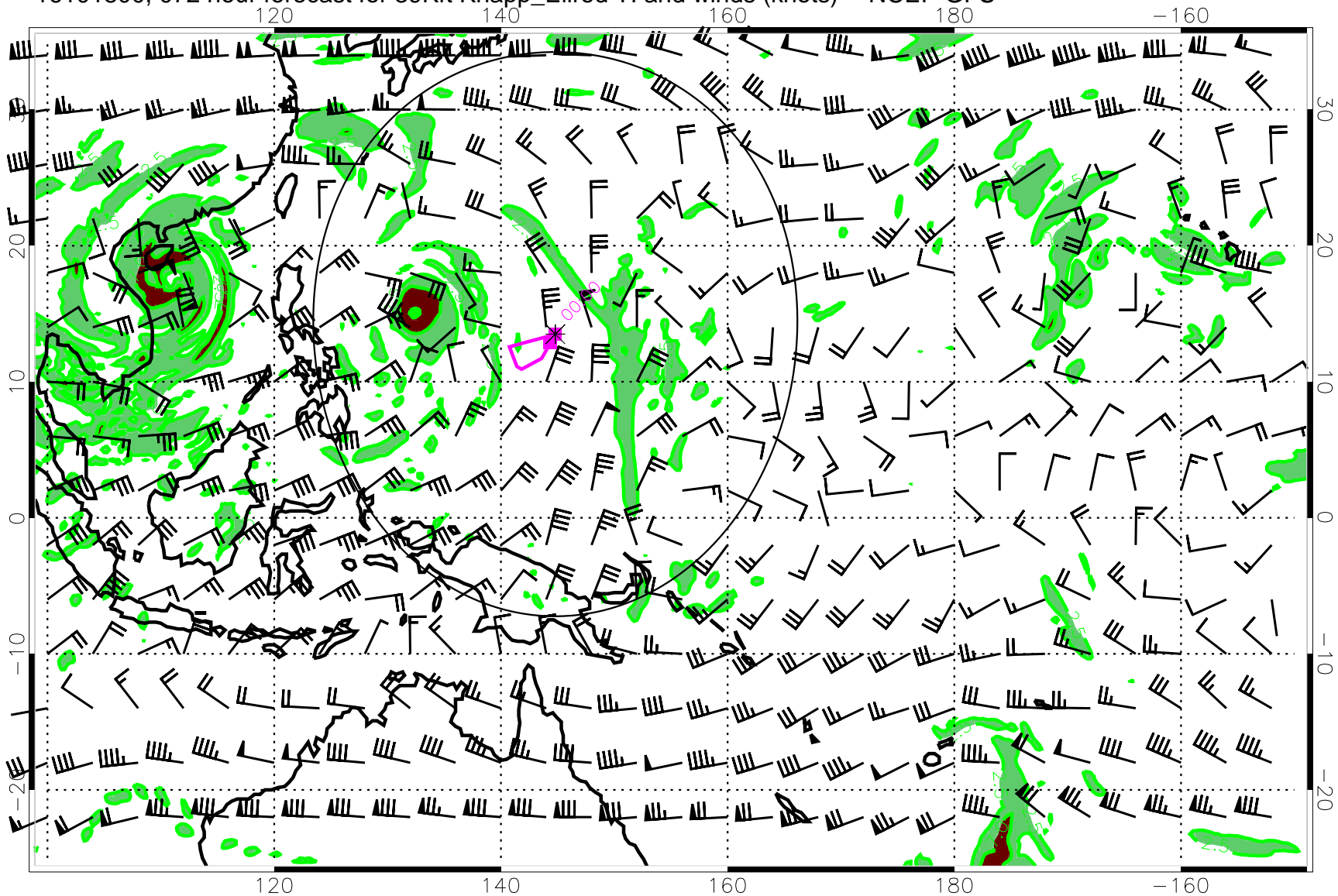
Turb value = 7 Turb value = 2.5

16101718, 066 hour forecast for 39Kft Knapp_Ellrod TI and winds (knots) -- NCEP GFS



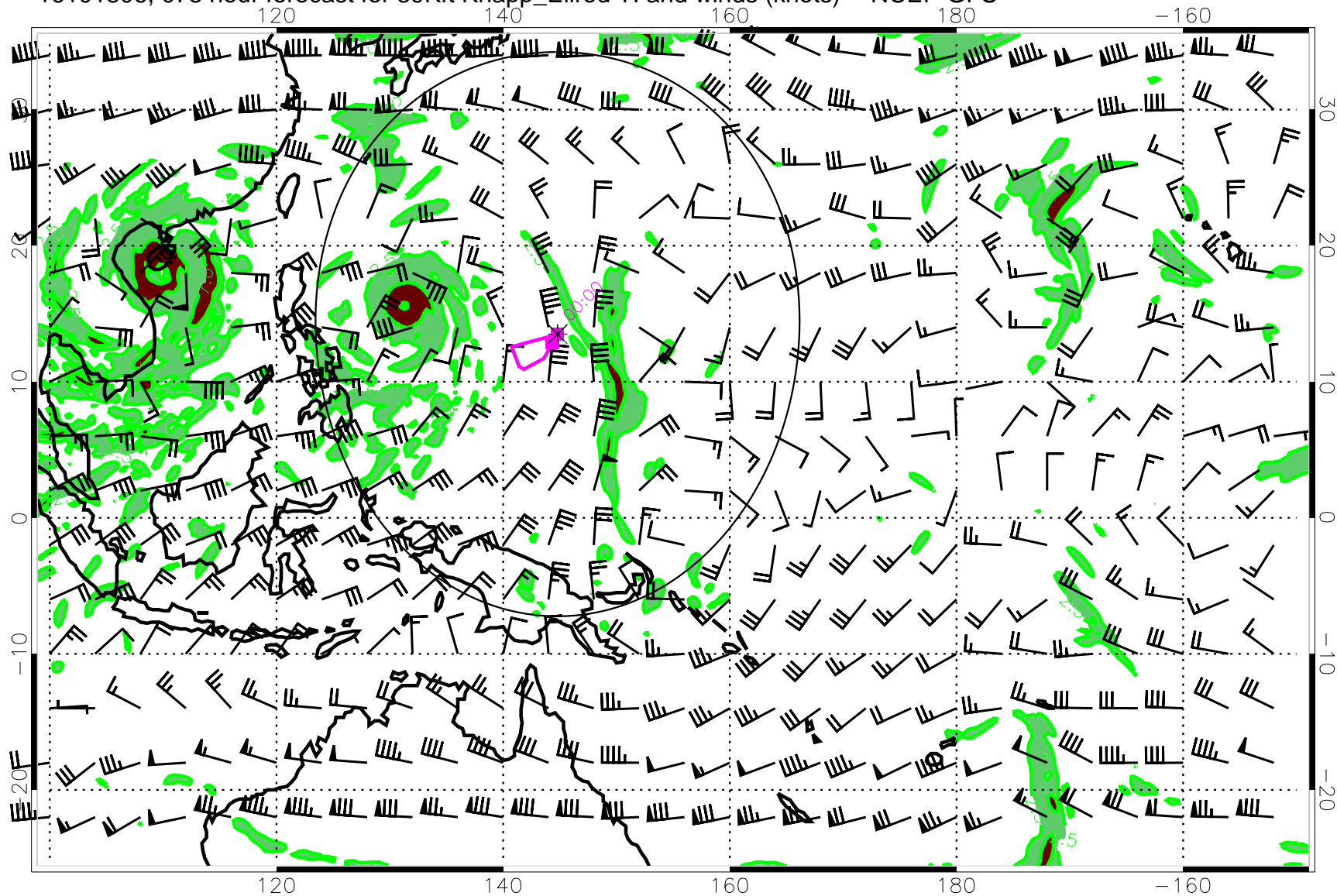
Turb value = 7 Turb value = 2.5

16101800, 072 hour forecast for 39Kft Knapp_Ellrod TI and winds (knots) -- NCEP GFS



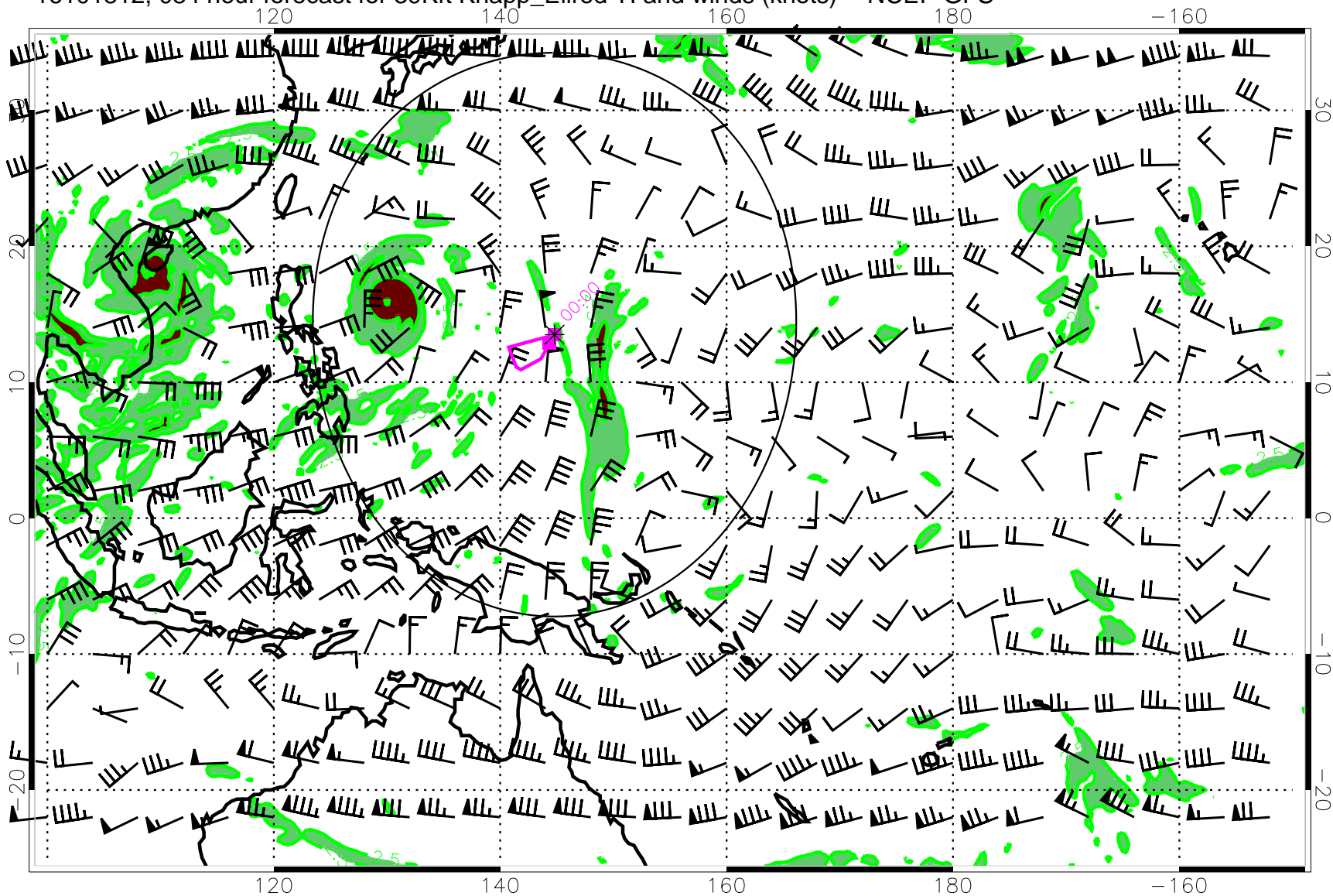
Turb value = 7 Turb value = 2.5

16101806, 078 hour forecast for 39Kft Knapp_Ellrod TI and winds (knots) -- NCEP GFS



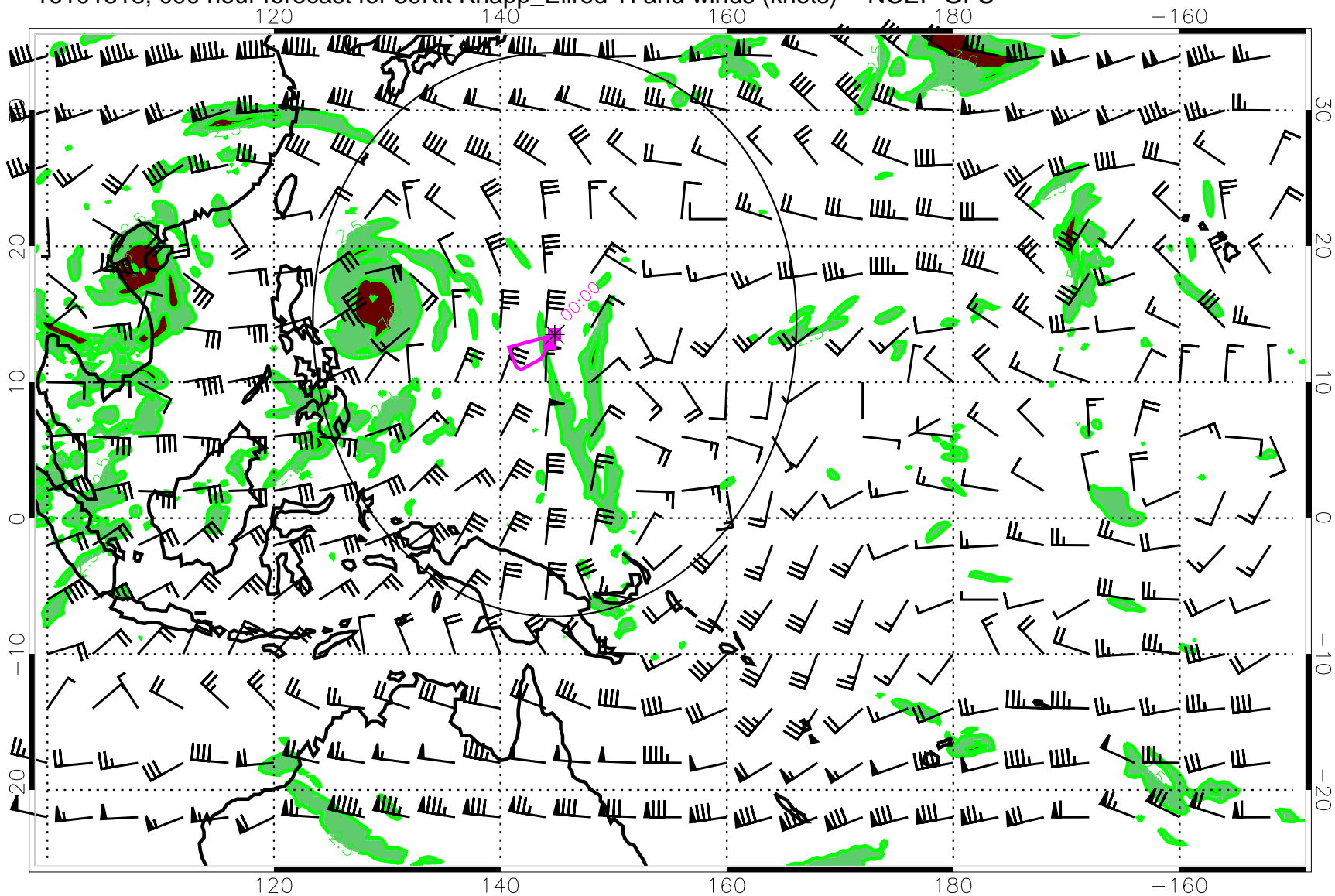
Turb value = 7 Turb value = 2.5

16101812, 084 hour forecast for 39Kft Knapp_Ellrod TI and winds (knots) -- NCEP GFS



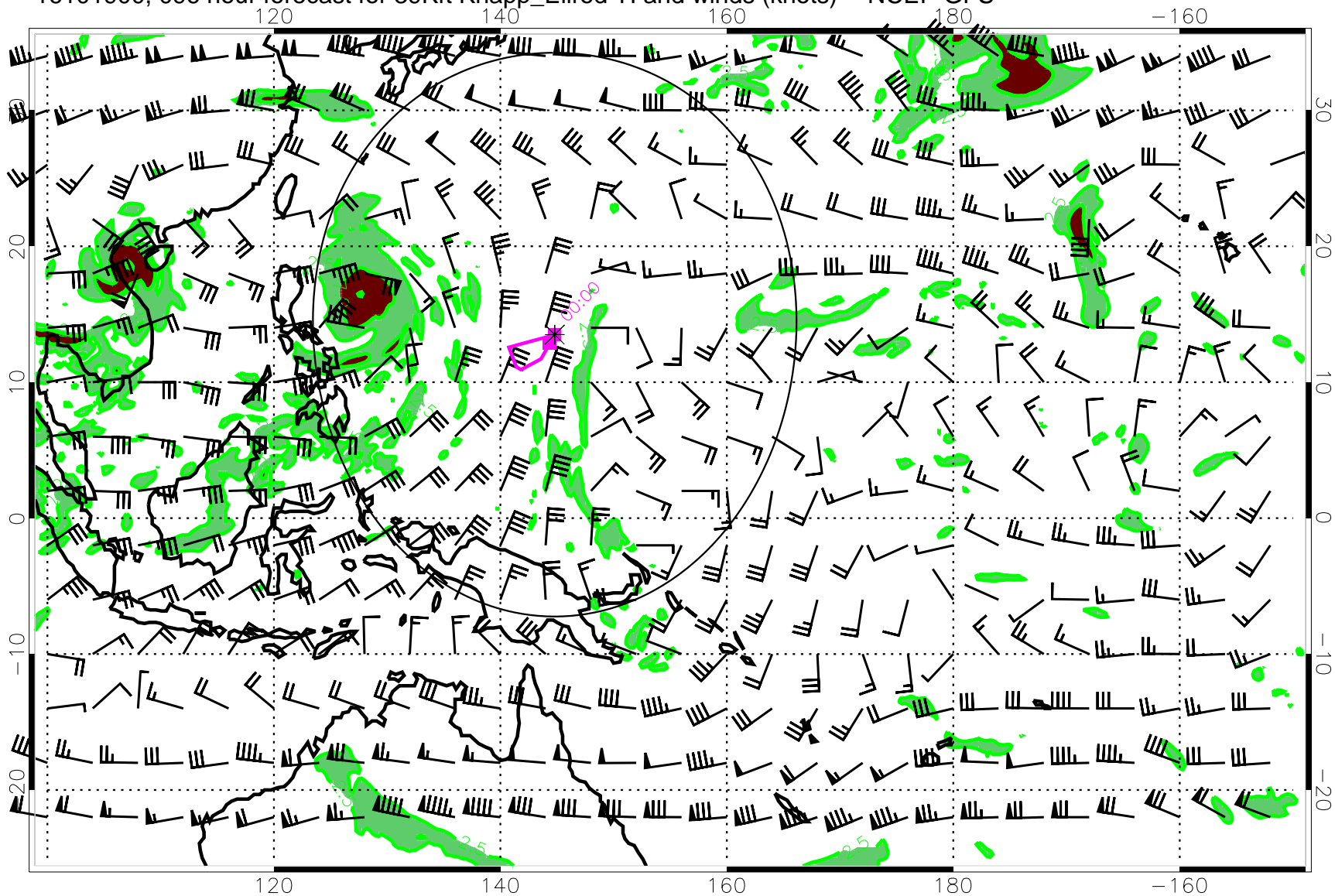
Turb value = 7 Turb value = 2.5

16101818, 090 hour forecast for 39Kft Knapp_Ellrod TI and winds (knots) -- NCEP GFS



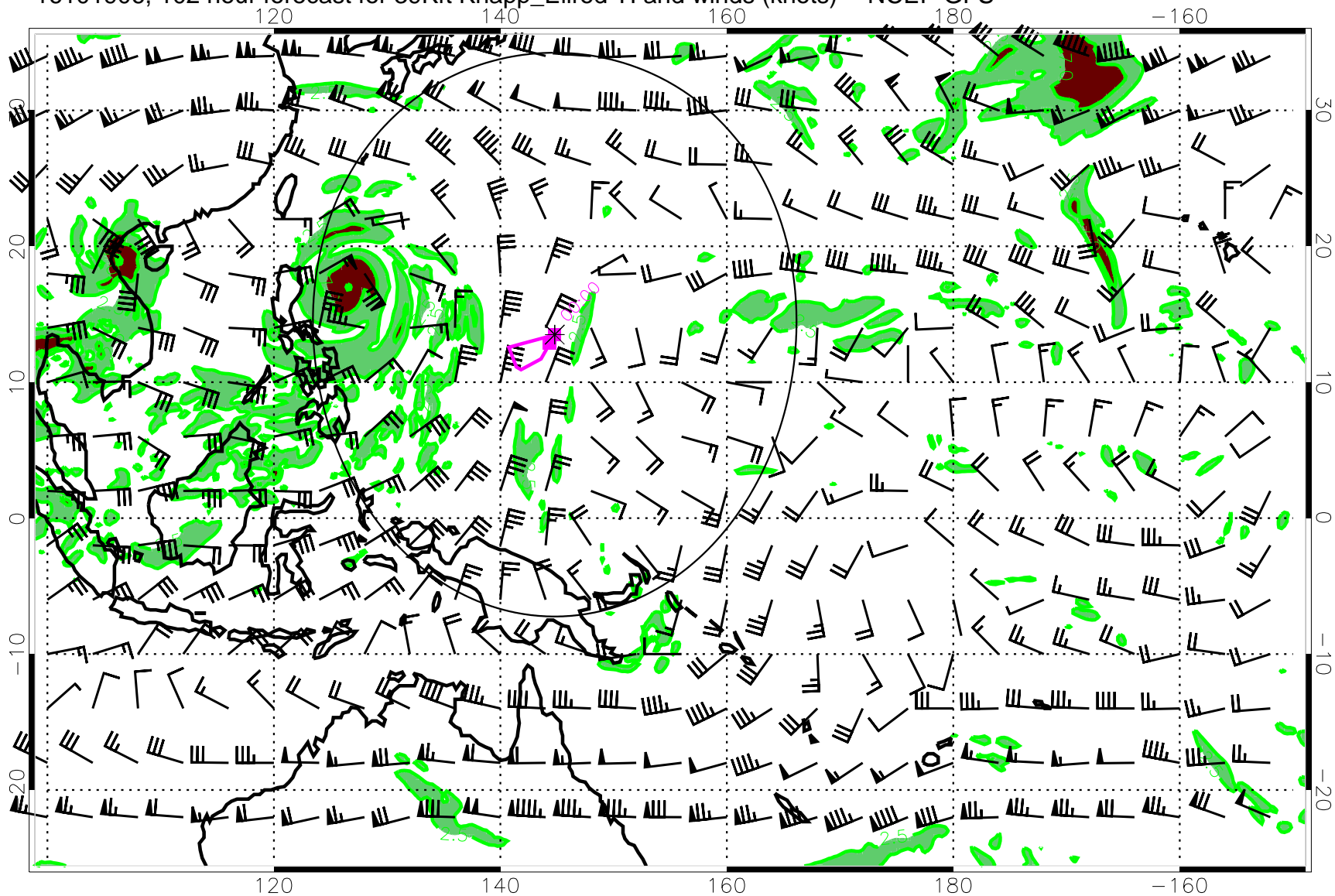
Turb value = 7 Turb value = 2.5

16101900, 096 hour forecast for 39Kft Knapp_Ellrod TI and winds (knots) -- NCEP GFS



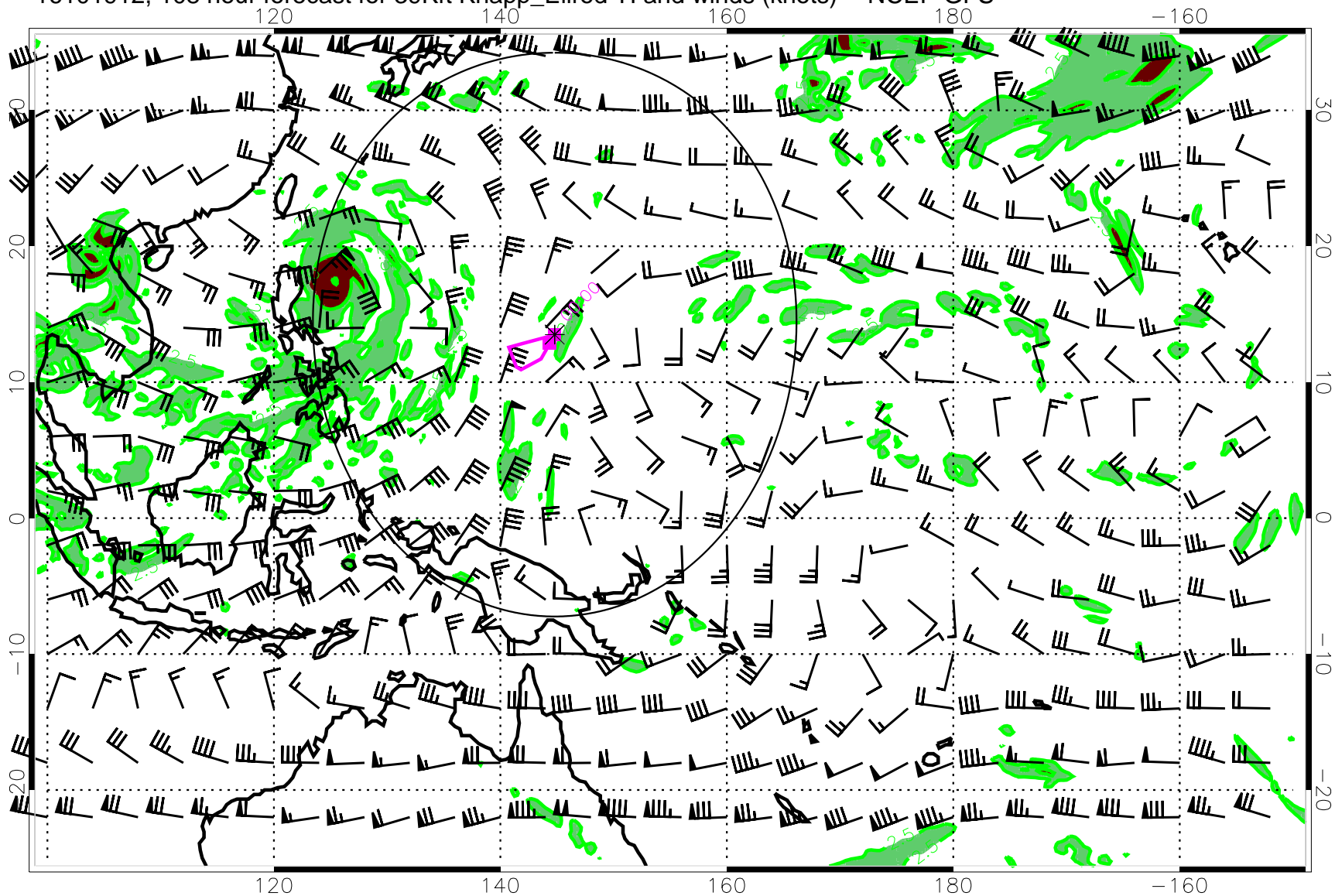
Turb value = 7 Turb value = 2.5

16101906, 102 hour forecast for 39Kft Knapp_Ellrod TI and winds (knots) -- NCEP GFS



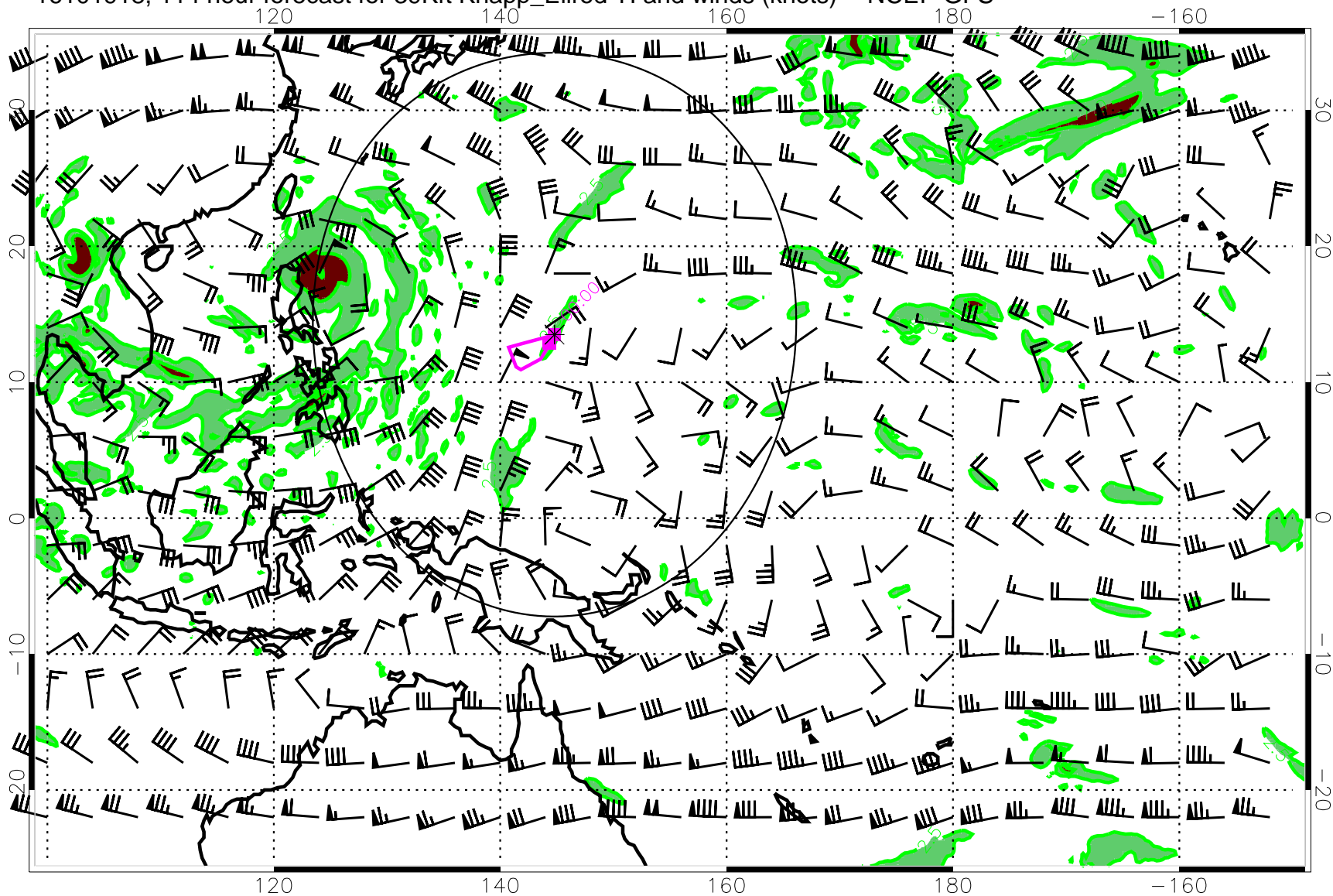
Turb value = 7 Turb value = 2.5

16101912, 108 hour forecast for 39Kft Knapp_Ellrod TI and winds (knots) -- NCEP GFS



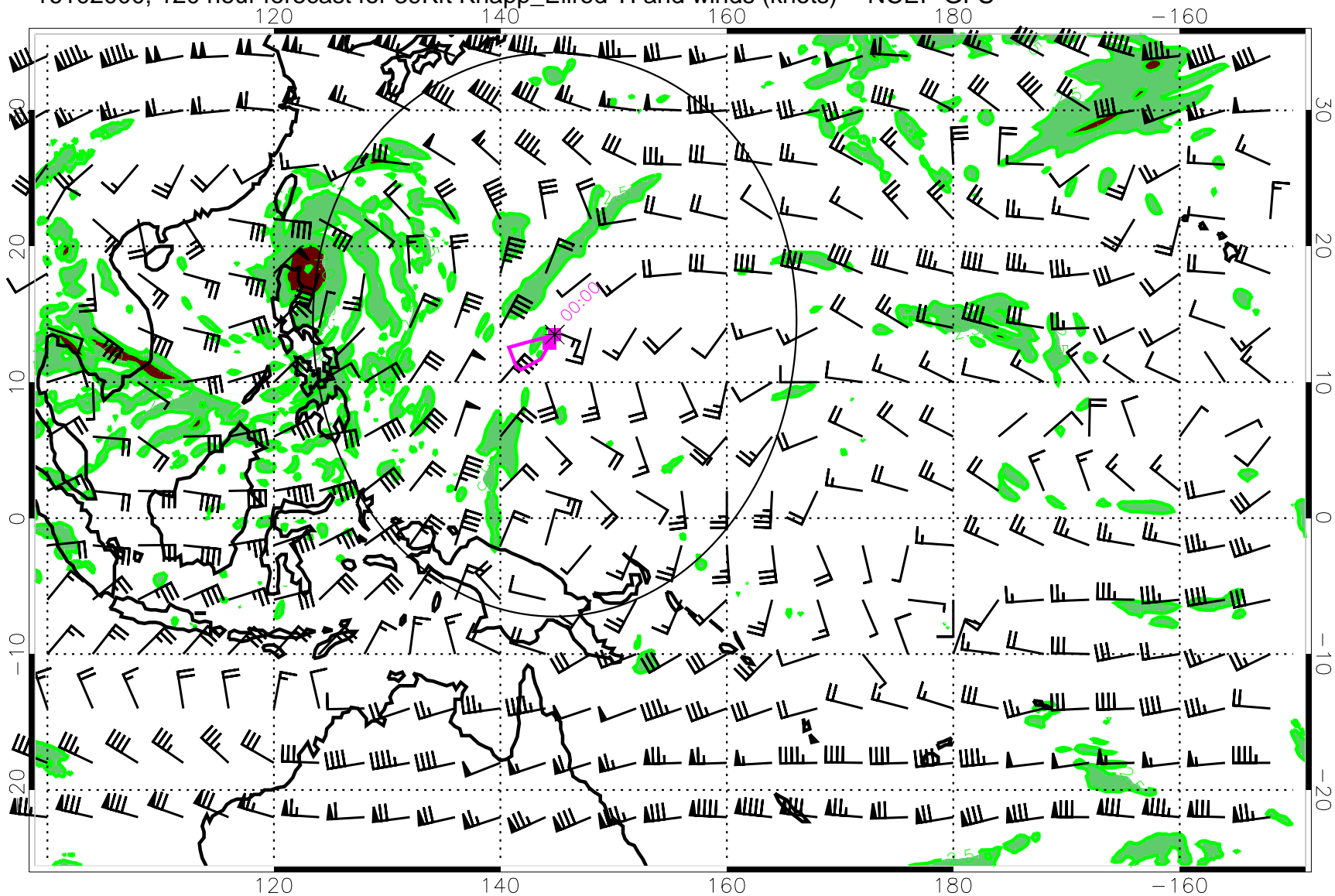
Turb value = 7 Turb value = 2.5

16101918, 114 hour forecast for 39Kft Knapp_Ellrod TI and winds (knots) -- NCEP GFS



Turb value = 7 Turb value = 2.5

16102000, 120 hour forecast for 39Kft Knapp_Ellrod TI and winds (knots) -- NCEP GFS



Turb value = 7 Turb value = 2.5