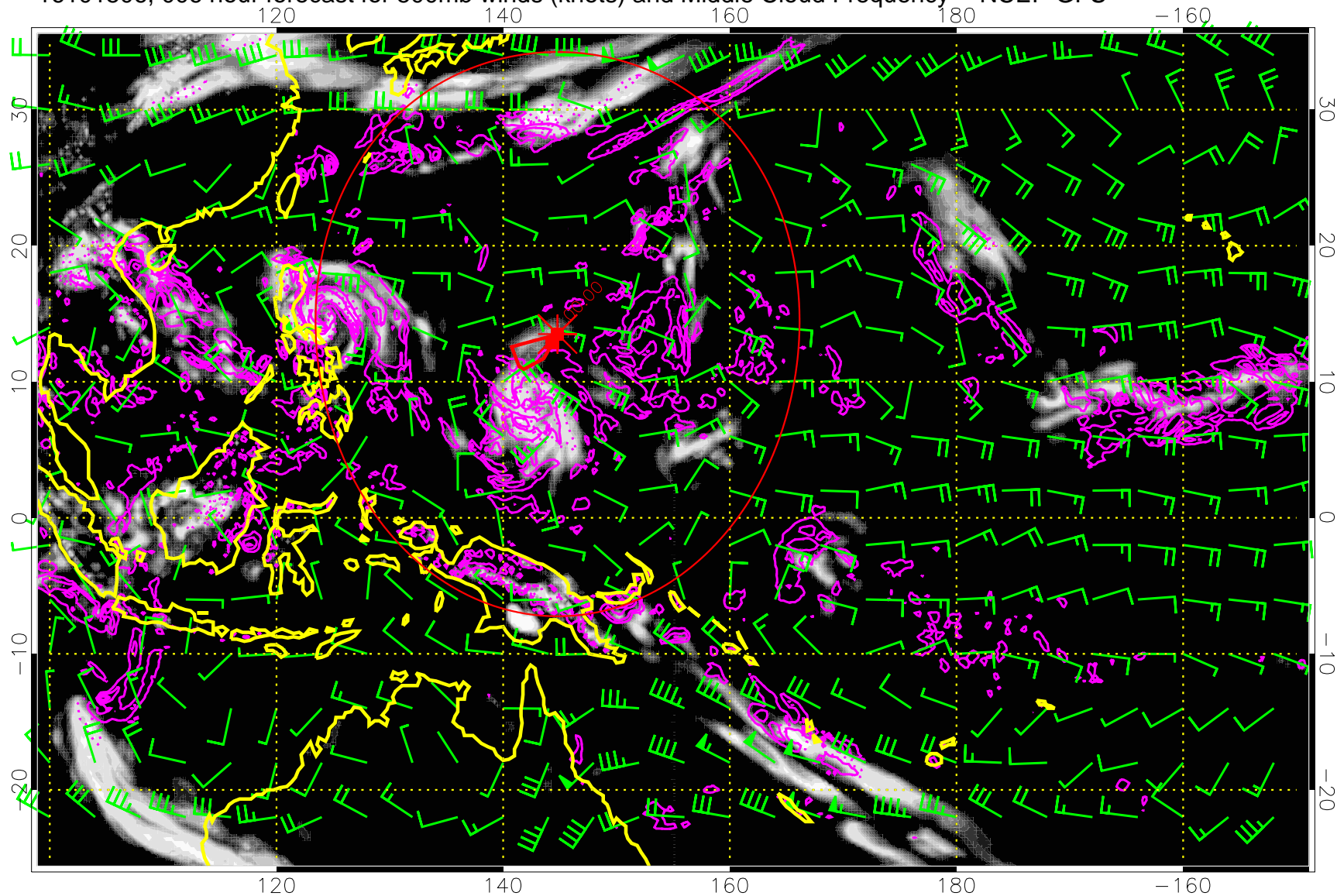


16101506, 006 hour forecast for 500mb winds (knots) and Middle Cloud Frequency -- NCEP GFS

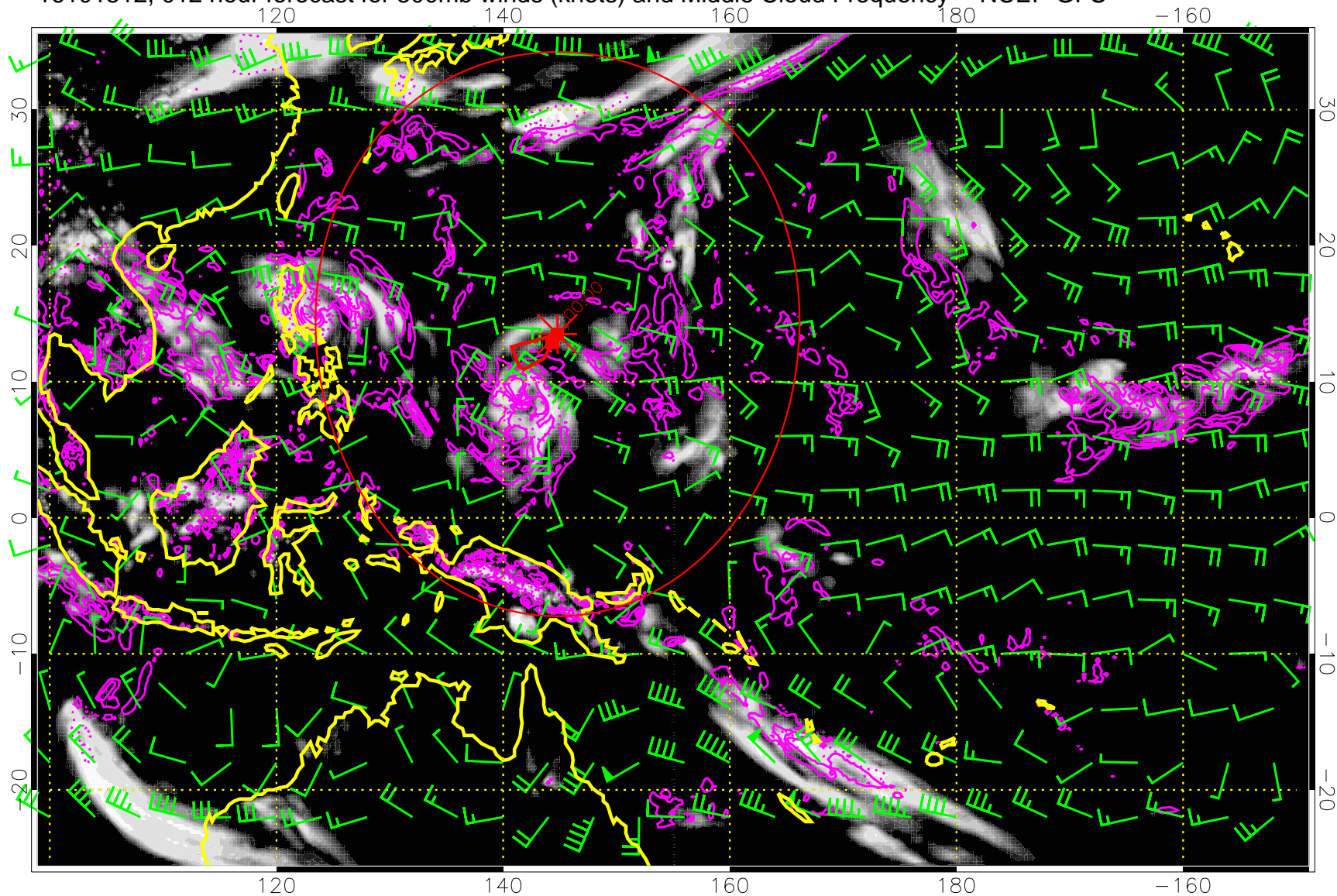


0.0 0.2 0.4 0.6 0.8 1.0
Middle Cloud Frequency

Precip (tot dot, conv sol) mm/day 40 mm/day contours, min 20

Range ring of 2304 km

16101512, 012 hour forecast for 500mb winds (knots) and Middle Cloud Frequency -- NCEP GFS

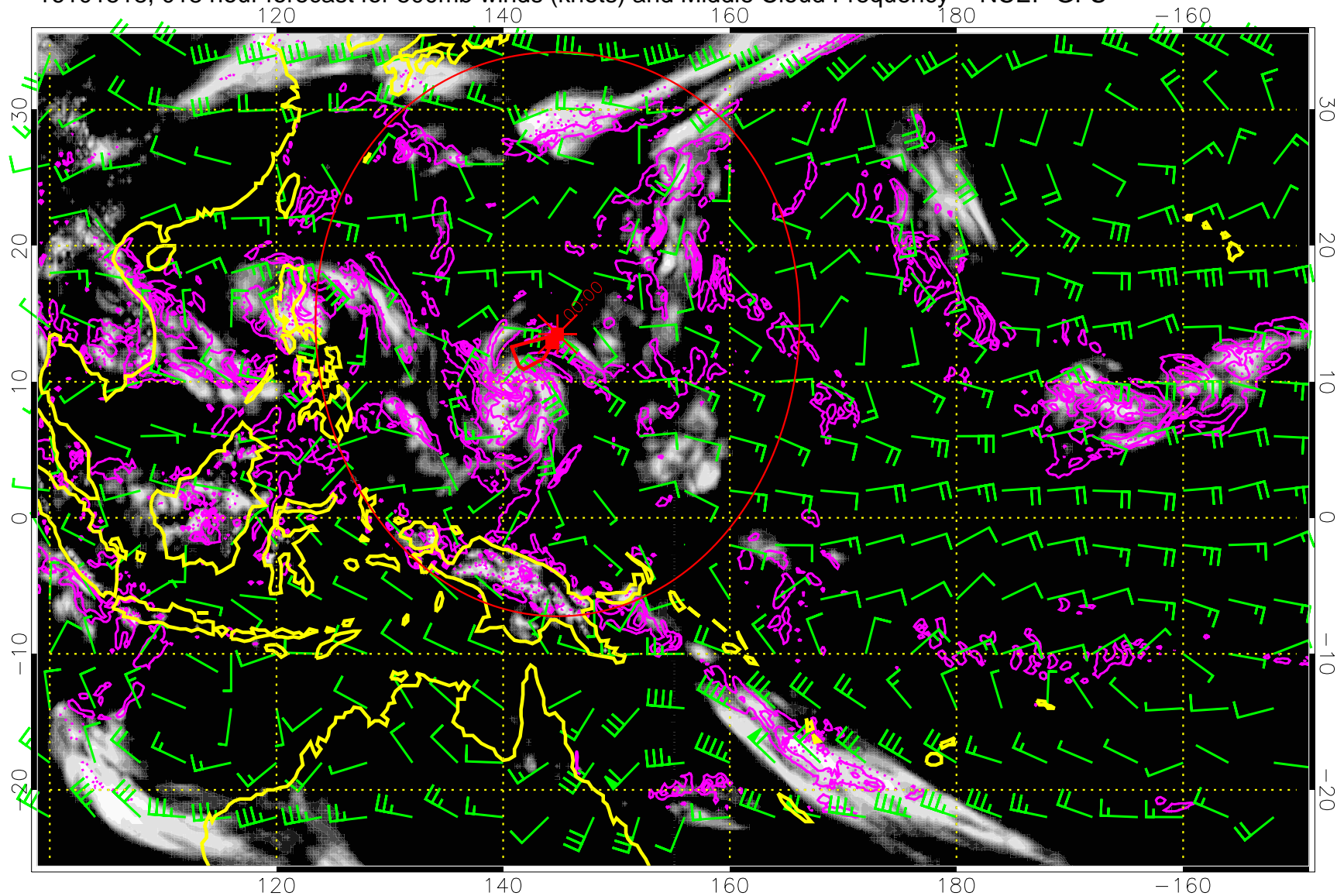


Middle Cloud Frequency

Precip (tot dot, conv sol) mm/day 40 mm/day contours, min 20

Range ring of 2304 km

16101518, 018 hour forecast for 500mb winds (knots) and Middle Cloud Frequency -- NCEP GFS

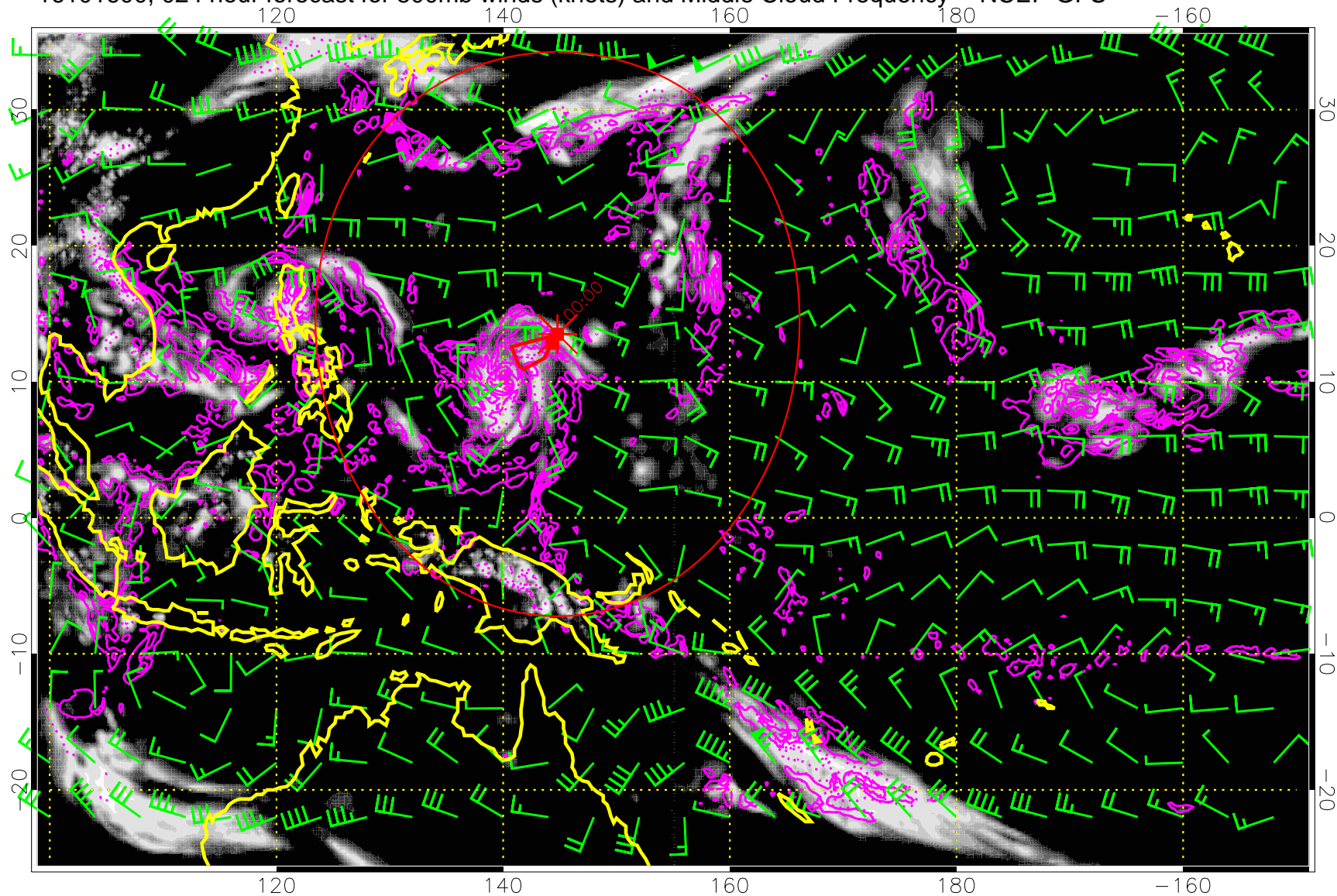


Middle Cloud Frequency

Precip (tot dot, conv sol) mm/day 40 mm/day contours, min 20

Range ring of 2304 km

16101600, 024 hour forecast for 500mb winds (knots) and Middle Cloud Frequency -- NCEP GFS

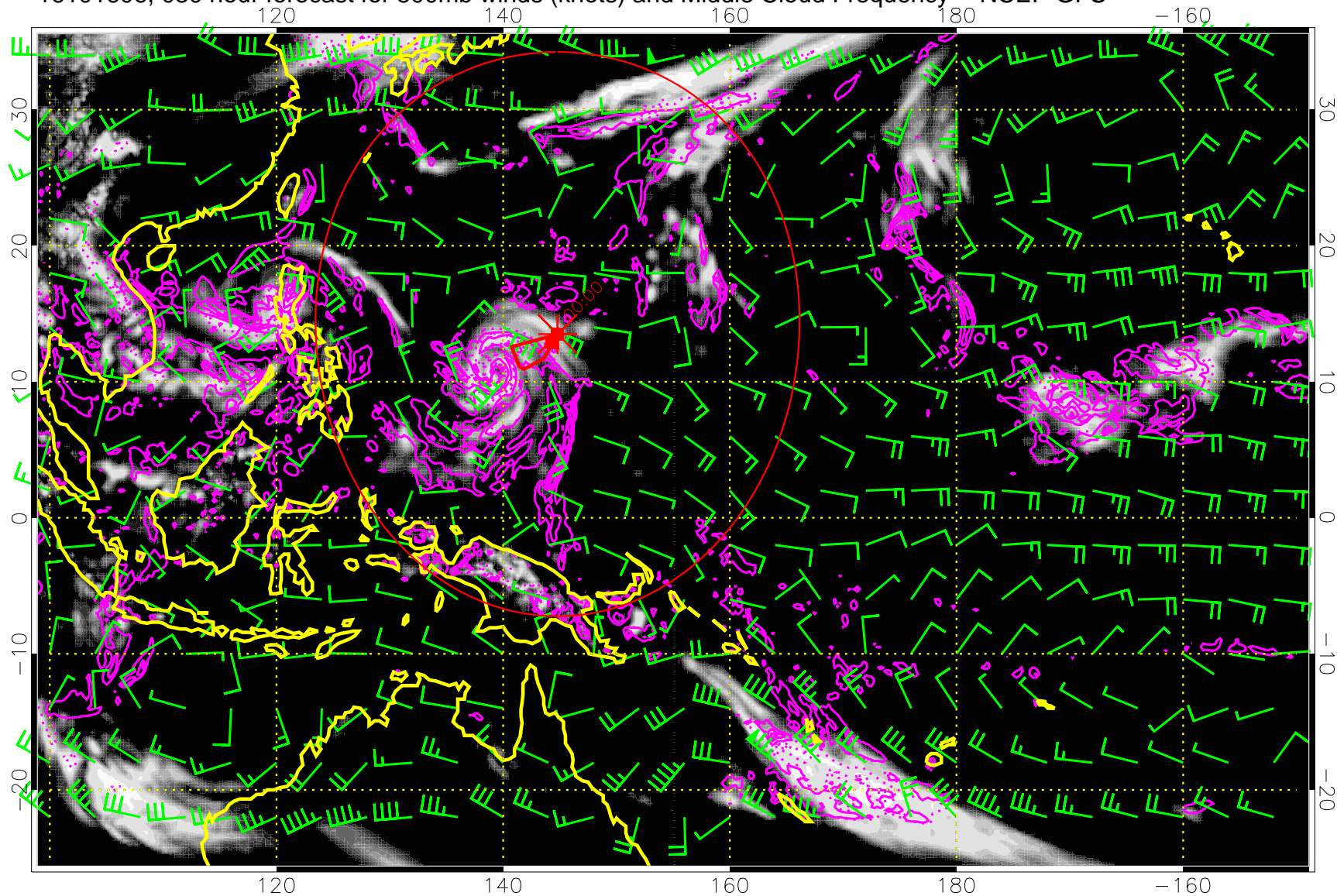


0.0 0.2 0.4 0.6 0.8 1.0
Middle Cloud Frequency

Precip (tot dot, conv sol) mm/day 40 mm/day contours, min 20

Range ring of 2304 km

16101606, 030 hour forecast for 500mb winds (knots) and Middle Cloud Frequency -- NCEP GFS

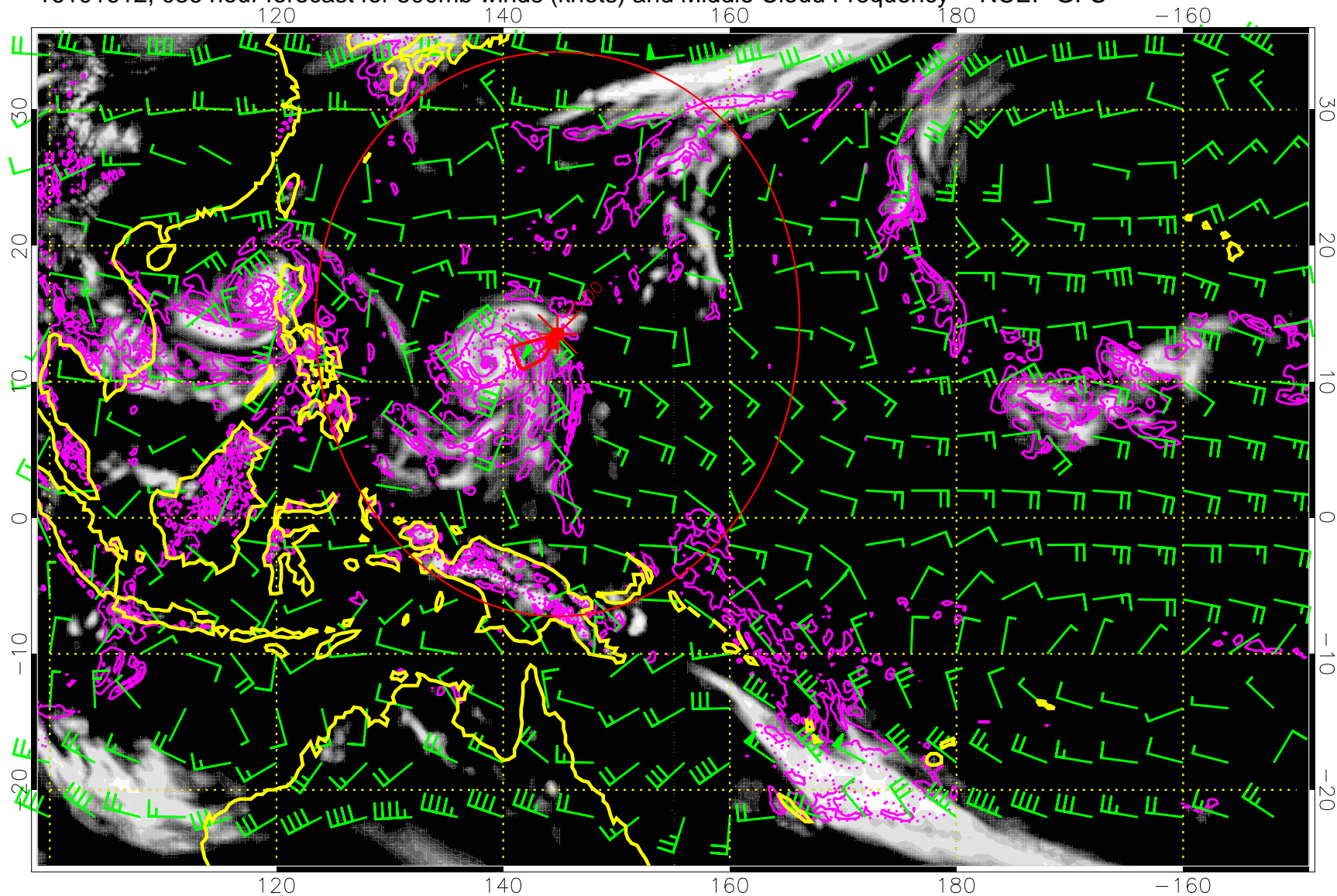


Middle Cloud Frequency

Precip (tot dot, conv sol) mm/day 40 mm/day contours, min 20

Range ring of 2304 km

16101612, 036 hour forecast for 500mb winds (knots) and Middle Cloud Frequency -- NCEP GFS

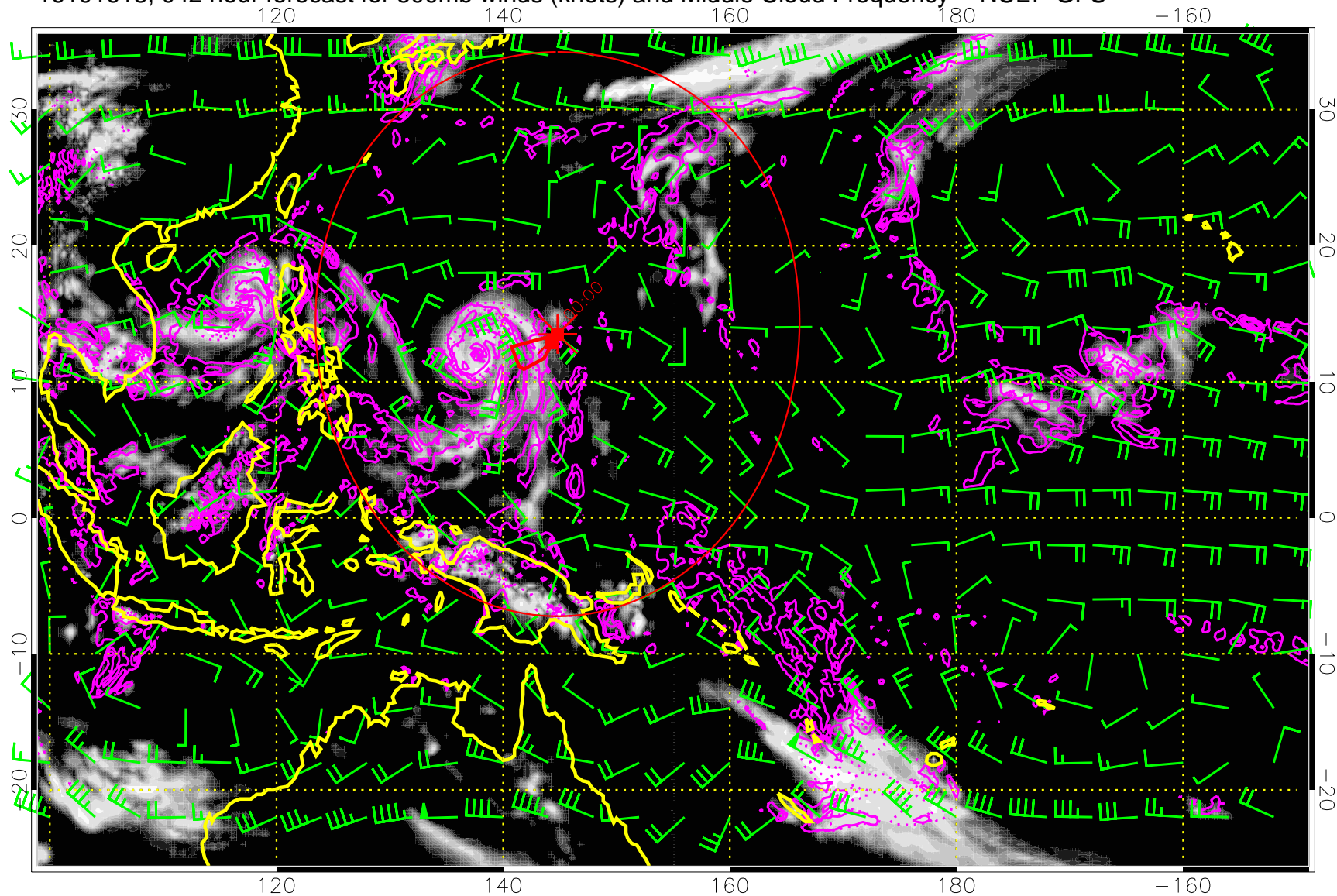


0.0 0.2 0.4 0.6 0.8 1.0
Middle Cloud Frequency

Precip (tot dot, conv sol) mm/day 40 mm/day contours, min 20

Range ring of 2304 km

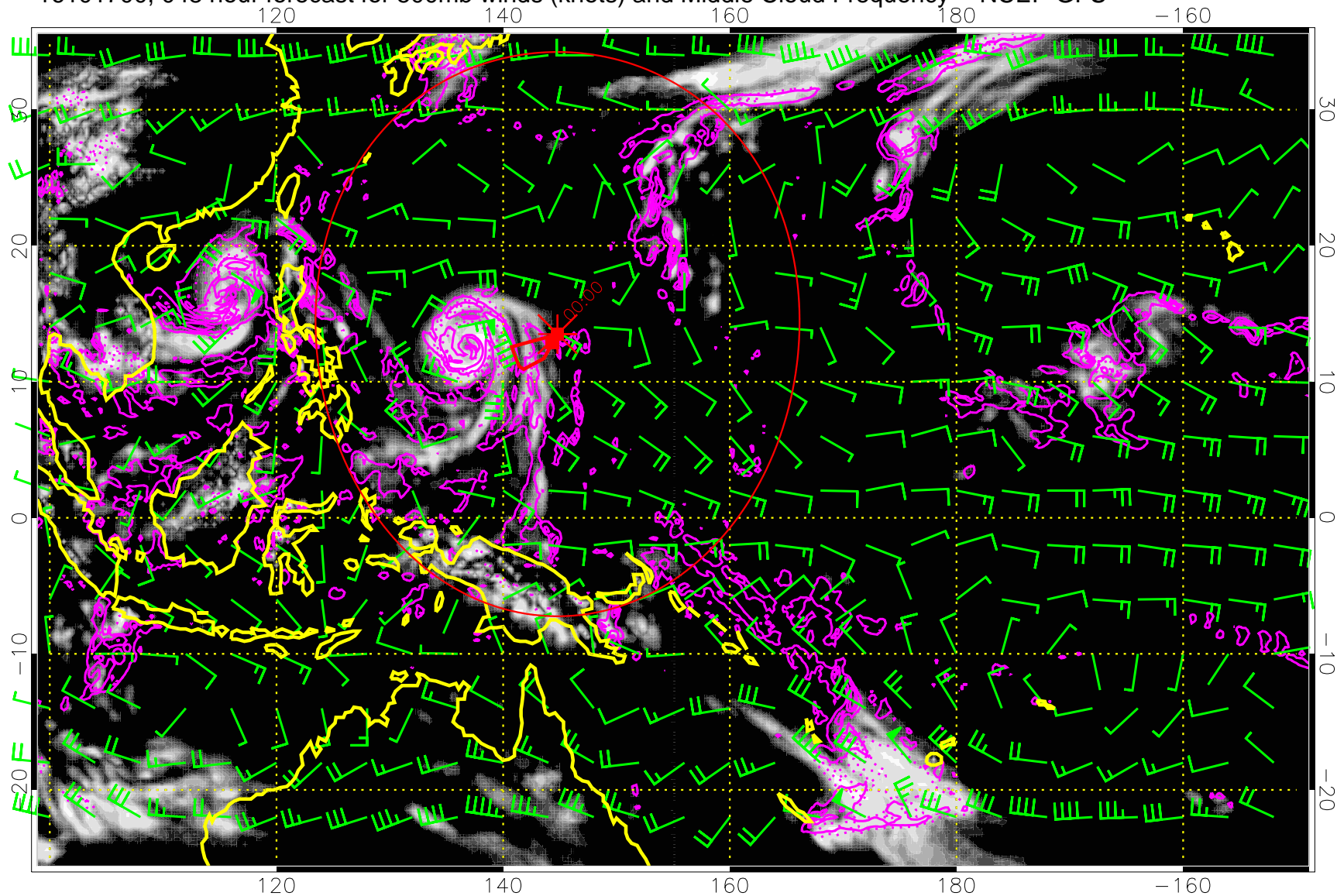
16101618, 042 hour forecast for 500mb winds (knots) and Middle Cloud Frequency -- NCEP GFS



Precip (tot dot, conv sol) mm/day 40 mm/day contours, min 20

Range ring of 2304 km

16101700, 048 hour forecast for 500mb winds (knots) and Middle Cloud Frequency -- NCEP GFS

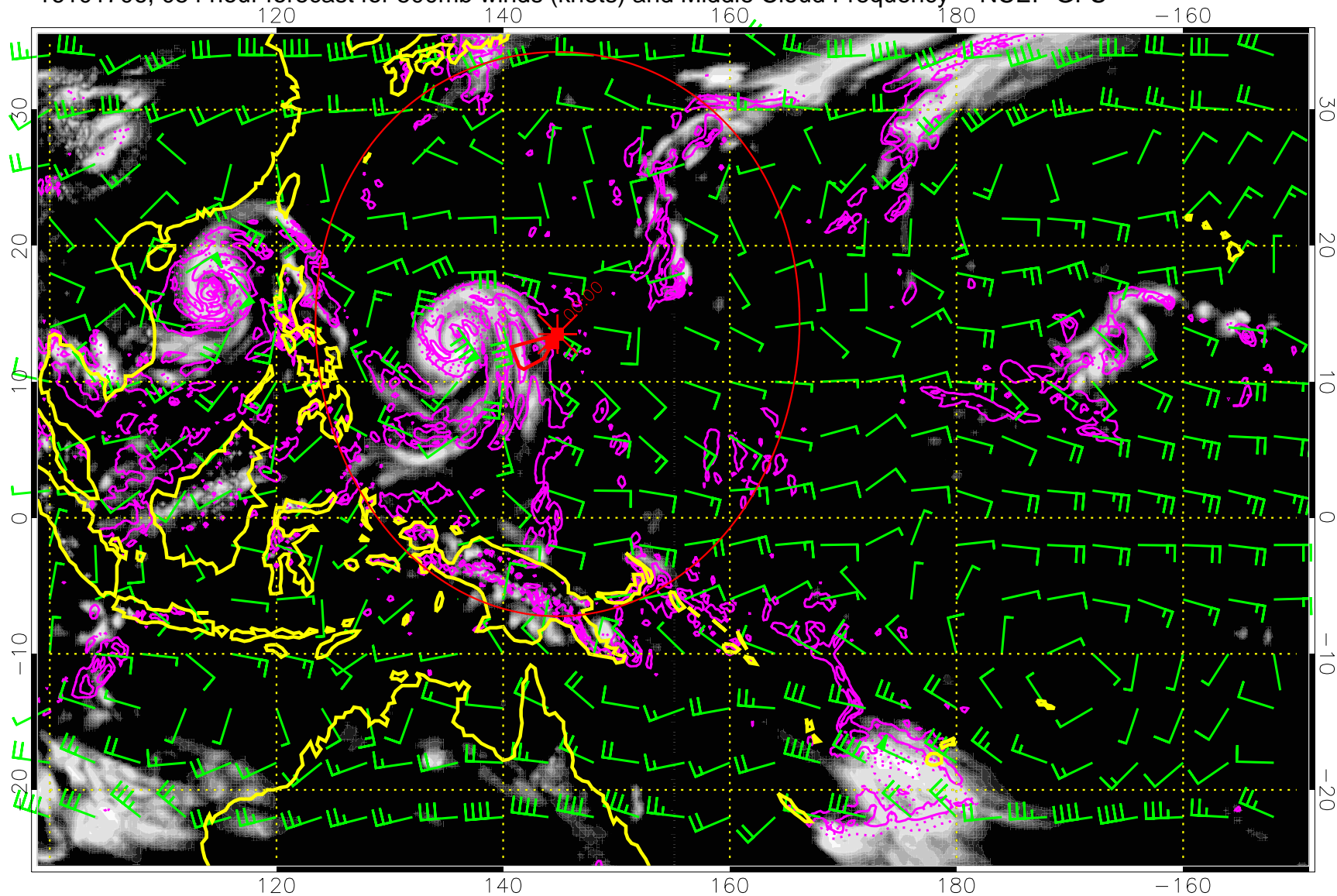


0.0 0.2 0.4 0.6 0.8 1.0
Middle Cloud Frequency

Precip (tot dot, conv sol) mm/day 40 mm/day contours, min 20

Range ring of 2304 km

16101706, 054 hour forecast for 500mb winds (knots) and Middle Cloud Frequency -- NCEP GFS

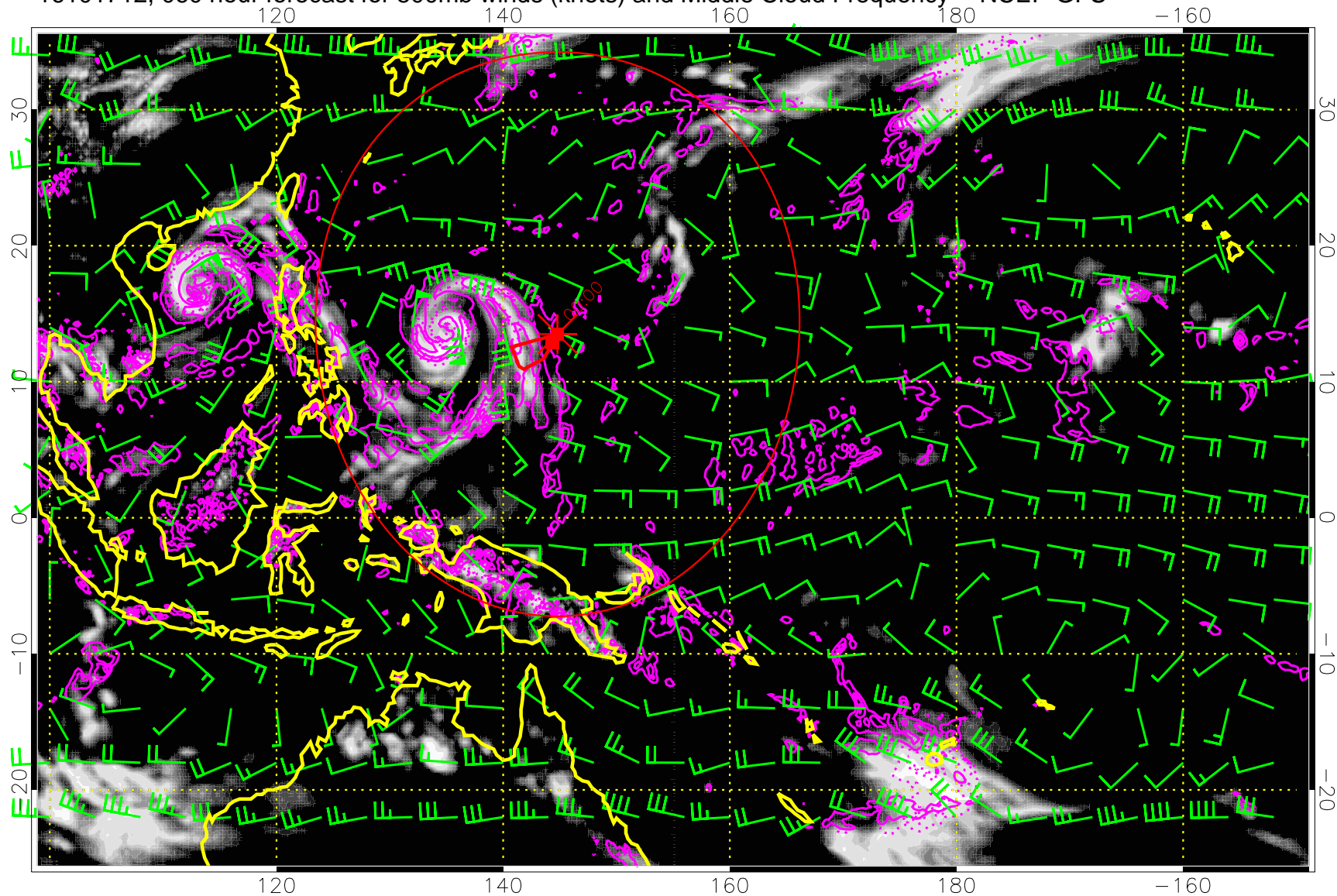


0.0 0.2 0.4 0.6 0.8 1.0
Middle Cloud Frequency

Precip (tot dot, conv sol) mm/day 40 mm/day contours, min 20

Range ring of 2304 km

16101712, 060 hour forecast for 500mb winds (knots) and Middle Cloud Frequency -- NCEP GFS

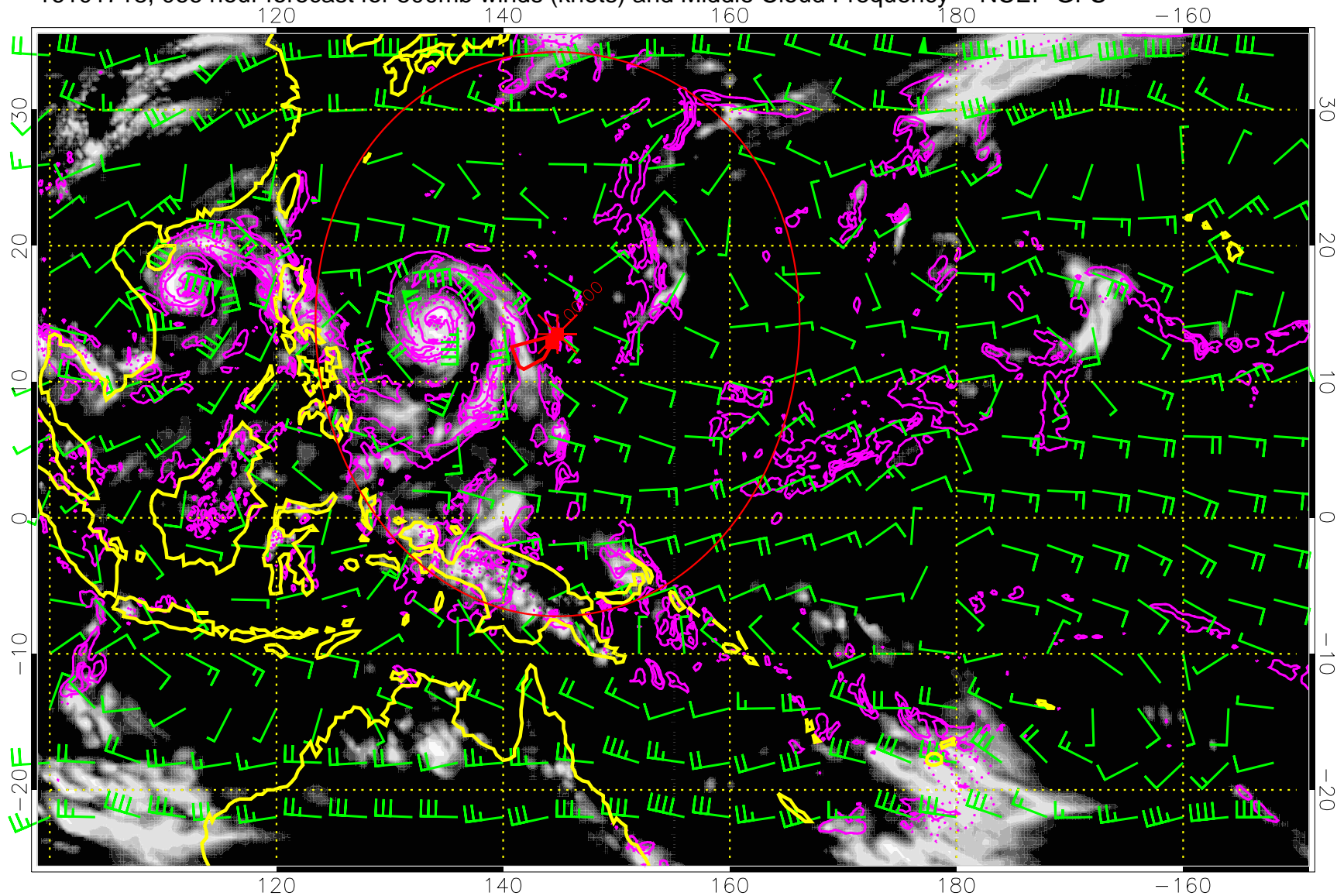


0.0 0.2 0.4 0.6 0.8 1.0
Middle Cloud Frequency

Precip (tot dot, conv sol) mm/day 40 mm/day contours, min 20

Range ring of 2304 km

16101718, 066 hour forecast for 500mb winds (knots) and Middle Cloud Frequency -- NCEP GFS

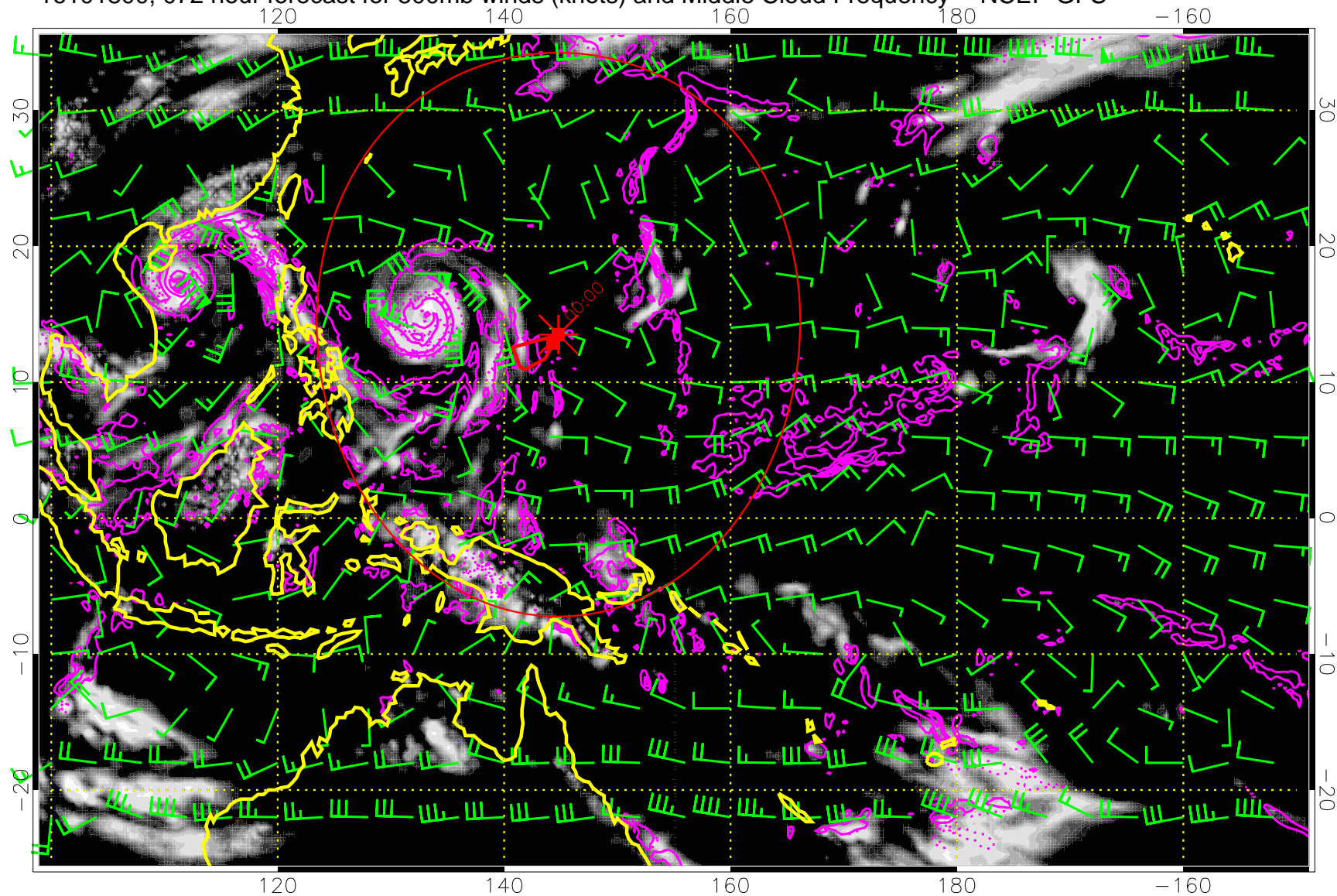


0.0 0.2 0.4 0.6 0.8 1.0
Middle Cloud Frequency

Precip (tot dot, conv sol) mm/day 40 mm/day contours, min 20

Range ring of 2304 km

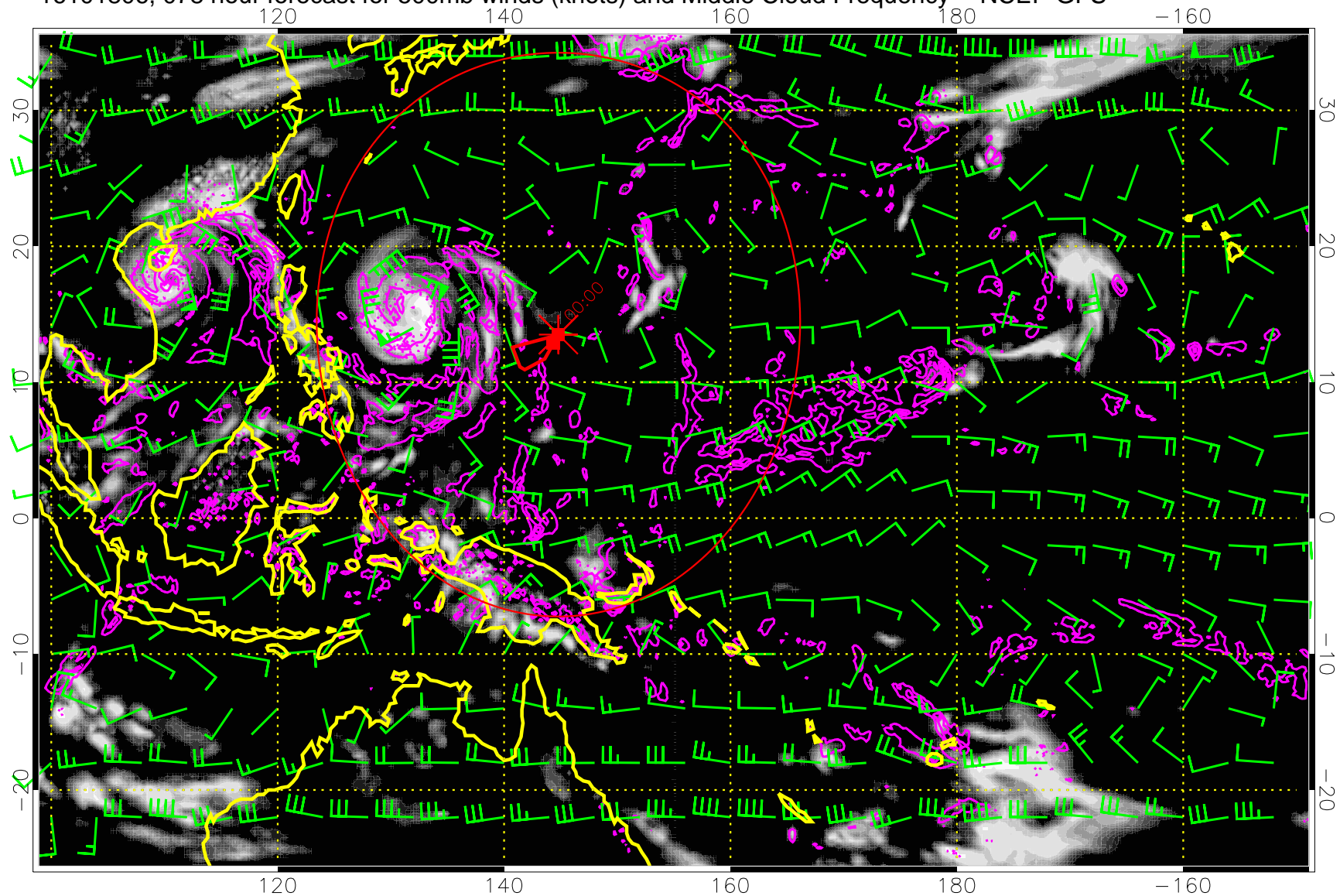
16101800, 072 hour forecast for 500mb winds (knots) and Middle Cloud Frequency -- NCEP GFS



Precip (tot dot, conv sol) mm/day 40 mm/day contours, min 20

Range ring of 2304 km

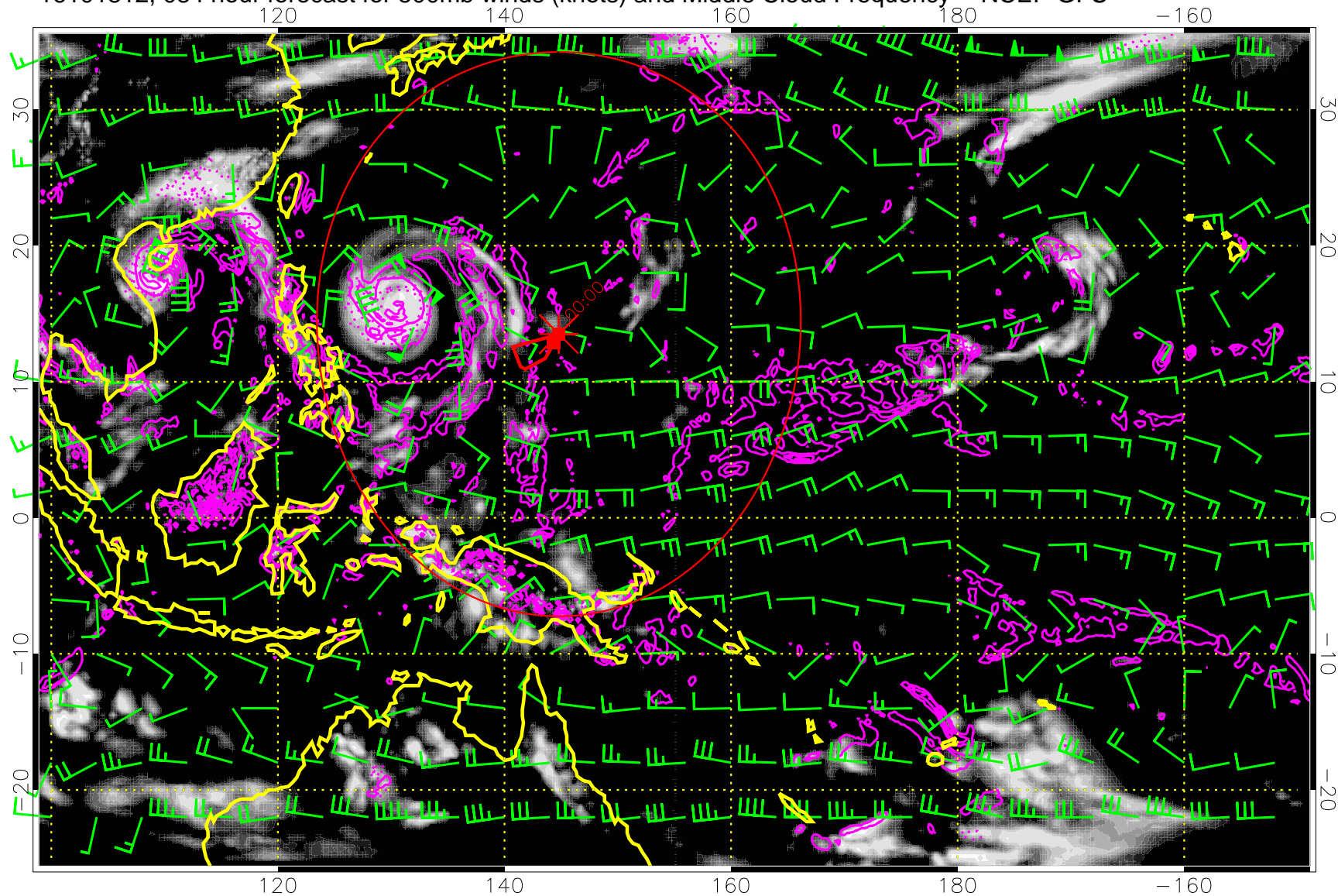
16101806, 078 hour forecast for 500mb winds (knots) and Middle Cloud Frequency -- NCEP GFS



Precip (tot dot, conv sol) mm/day 40 mm/day contours, min 20

Range ring of 2304 km

16101812, 084 hour forecast for 500mb winds (knots) and Middle Cloud Frequency -- NCEP GFS

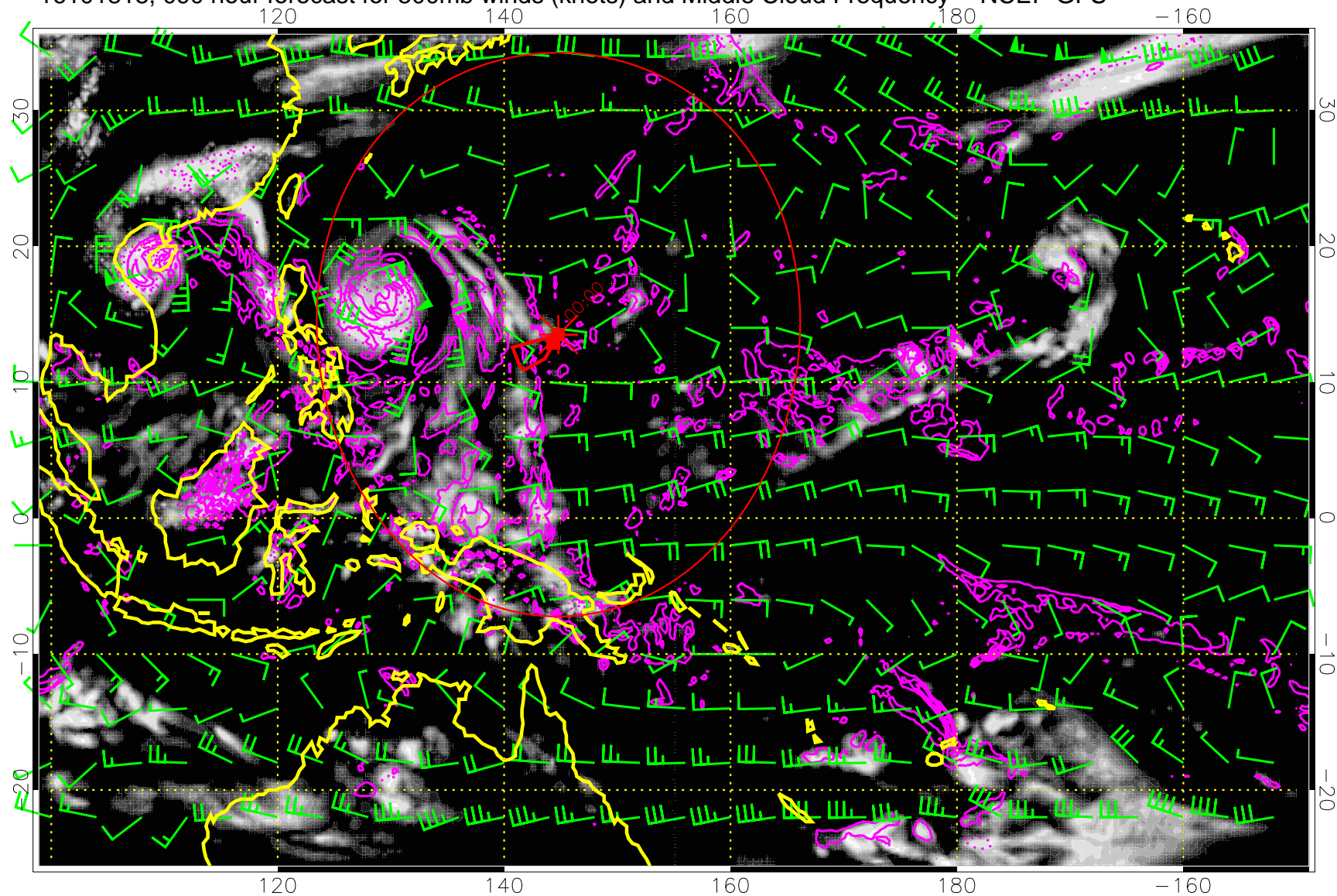


0.0 0.2 0.4 0.6 0.8 1.0
Middle Cloud Frequency

Precip (tot dot, conv sol) mm/day 40 mm/day contours, min 20

Range ring of 2304 km

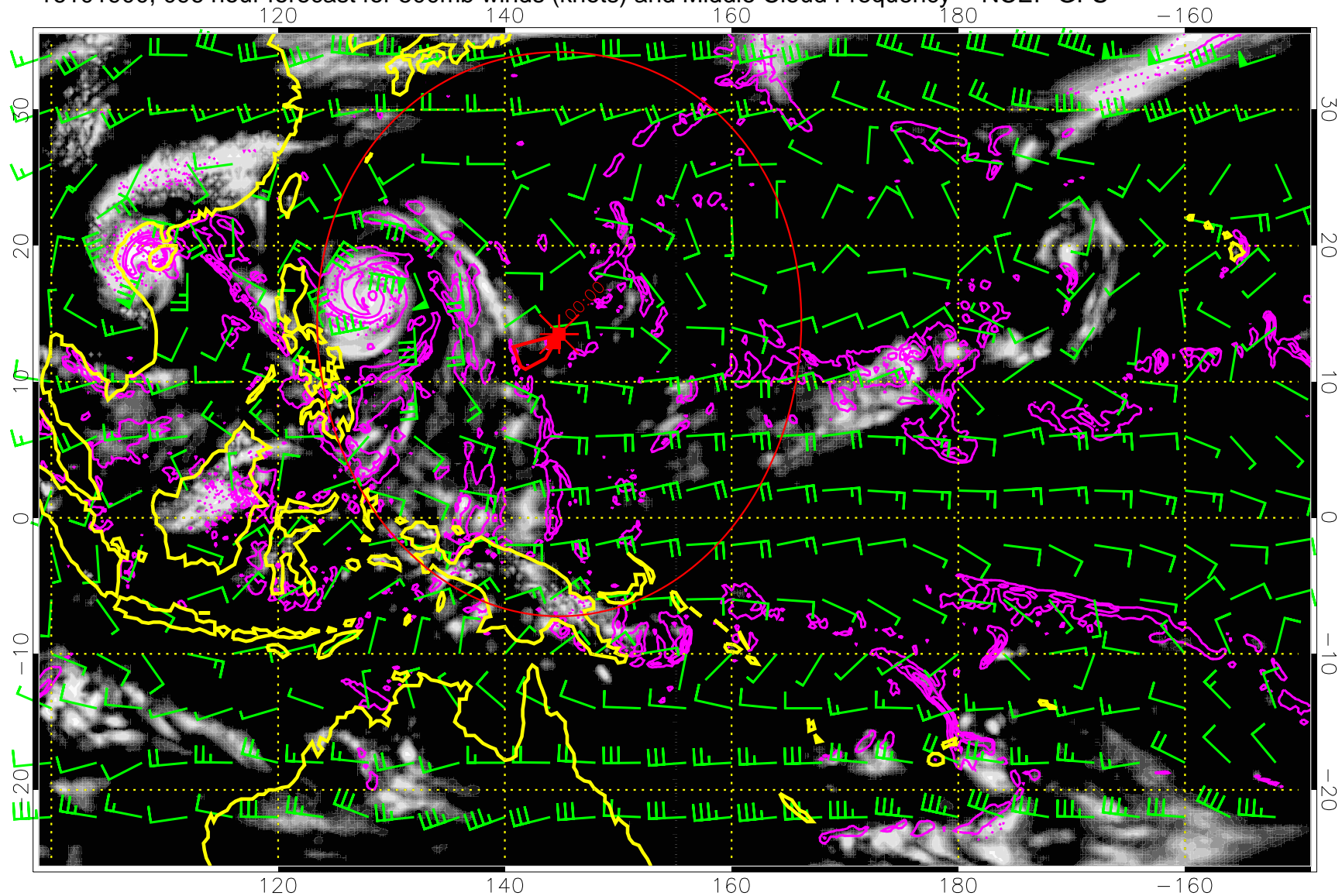
16101818, 090 hour forecast for 500mb winds (knots) and Middle Cloud Frequency -- NCEP GFS



Precip (tot dot, conv sol) mm/day 40 mm/day contours, min 20

Range ring of 2304 km

16101900, 096 hour forecast for 500mb winds (knots) and Middle Cloud Frequency -- NCEP GFS

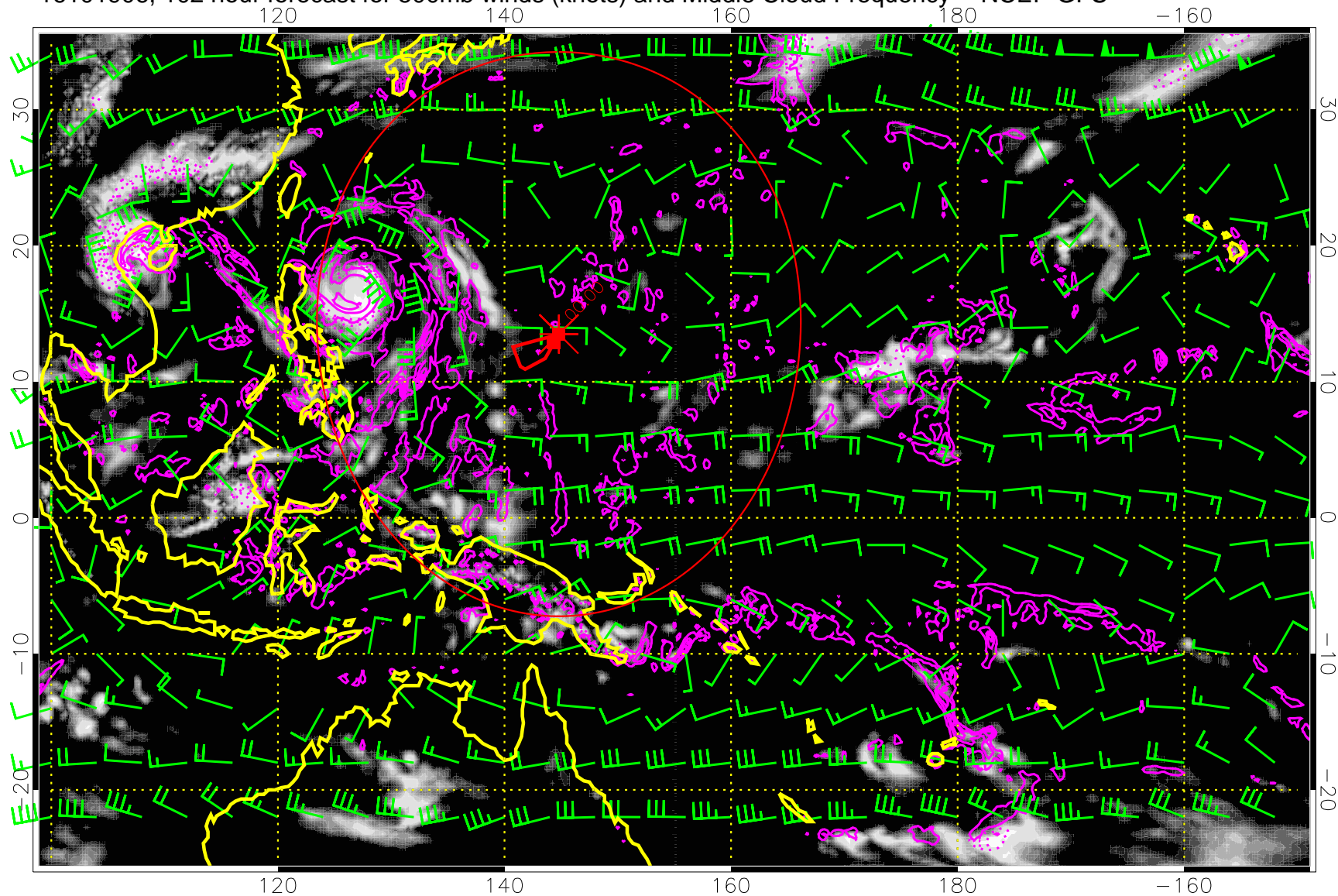


Middle Cloud Frequency

Precip (tot dot, conv sol) mm/day 40 mm/day contours, min 20

Range ring of 2304 km

16101906, 102 hour forecast for 500mb winds (knots) and Middle Cloud Frequency -- NCEP GFS

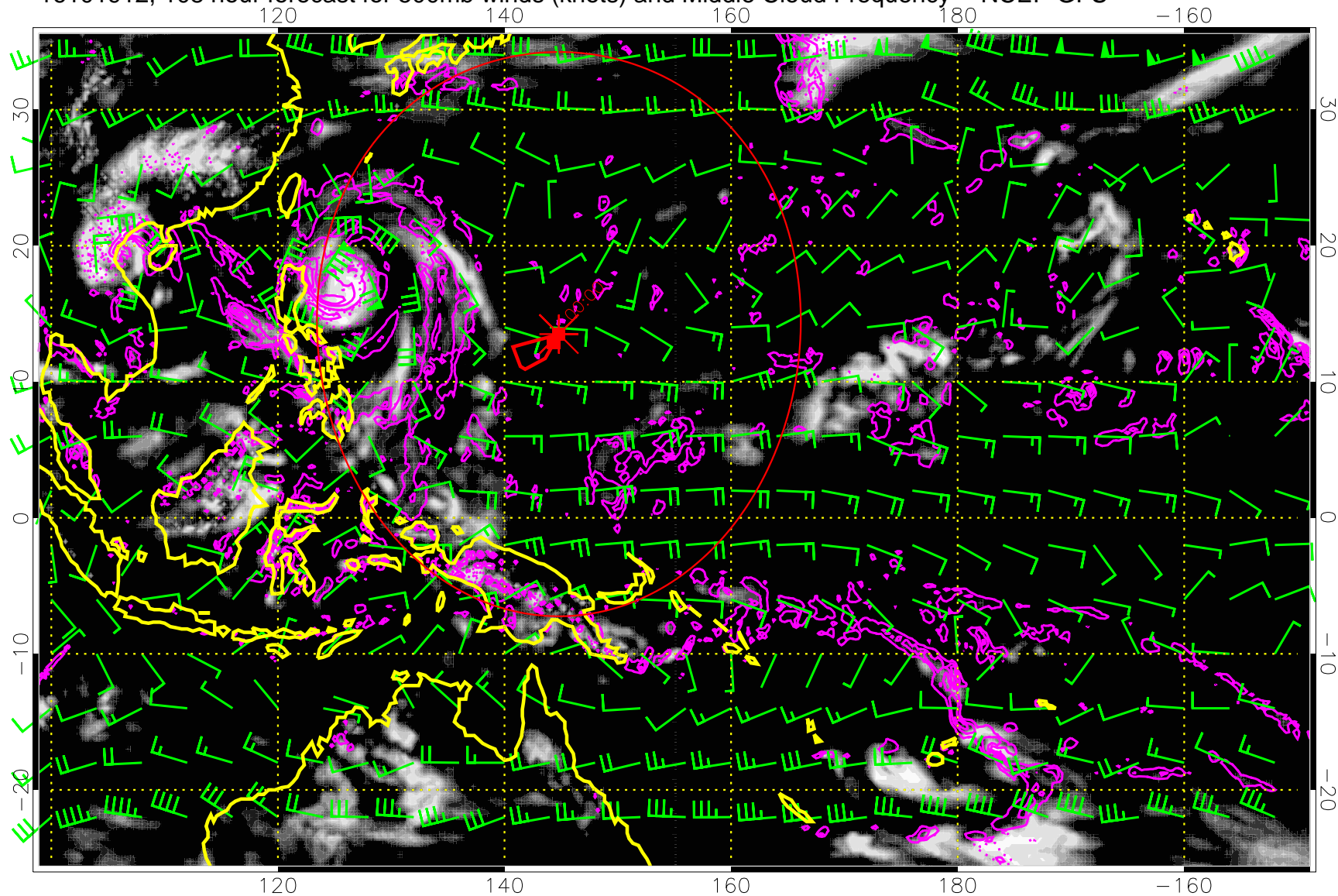


0.0 0.2 0.4 0.6 0.8 1.0
Middle Cloud Frequency

Precip (tot dot, conv sol) mm/day 40 mm/day contours, min 20

Range ring of 2304 km

16101912, 108 hour forecast for 500mb winds (knots) and Middle Cloud Frequency -- NCEP GFS

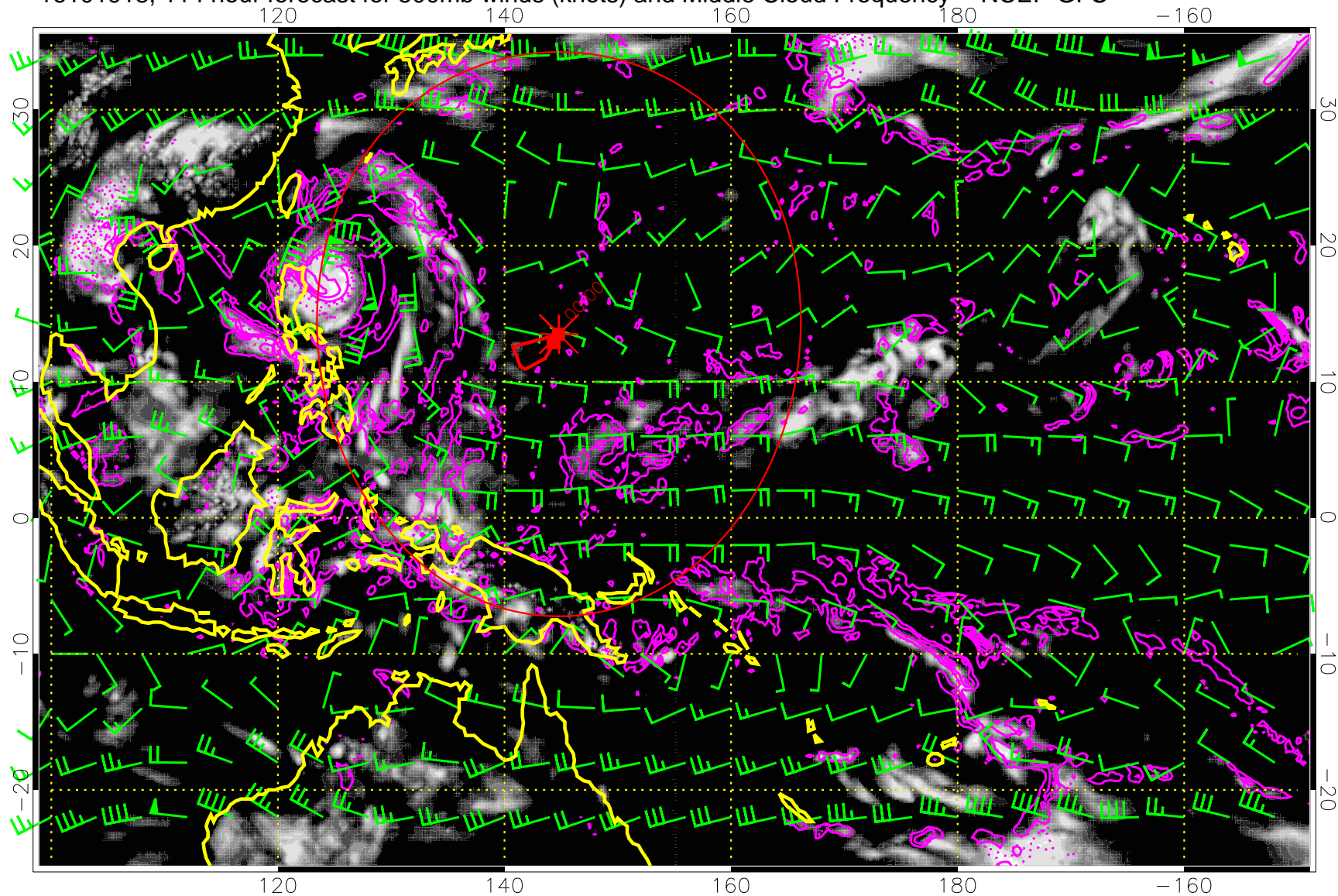


0.0 0.2 0.4 0.6 0.8 1.0
Middle Cloud Frequency

Precip (tot dot, conv sol) mm/day 40 mm/day contours, min 20

Range ring of 2304 km

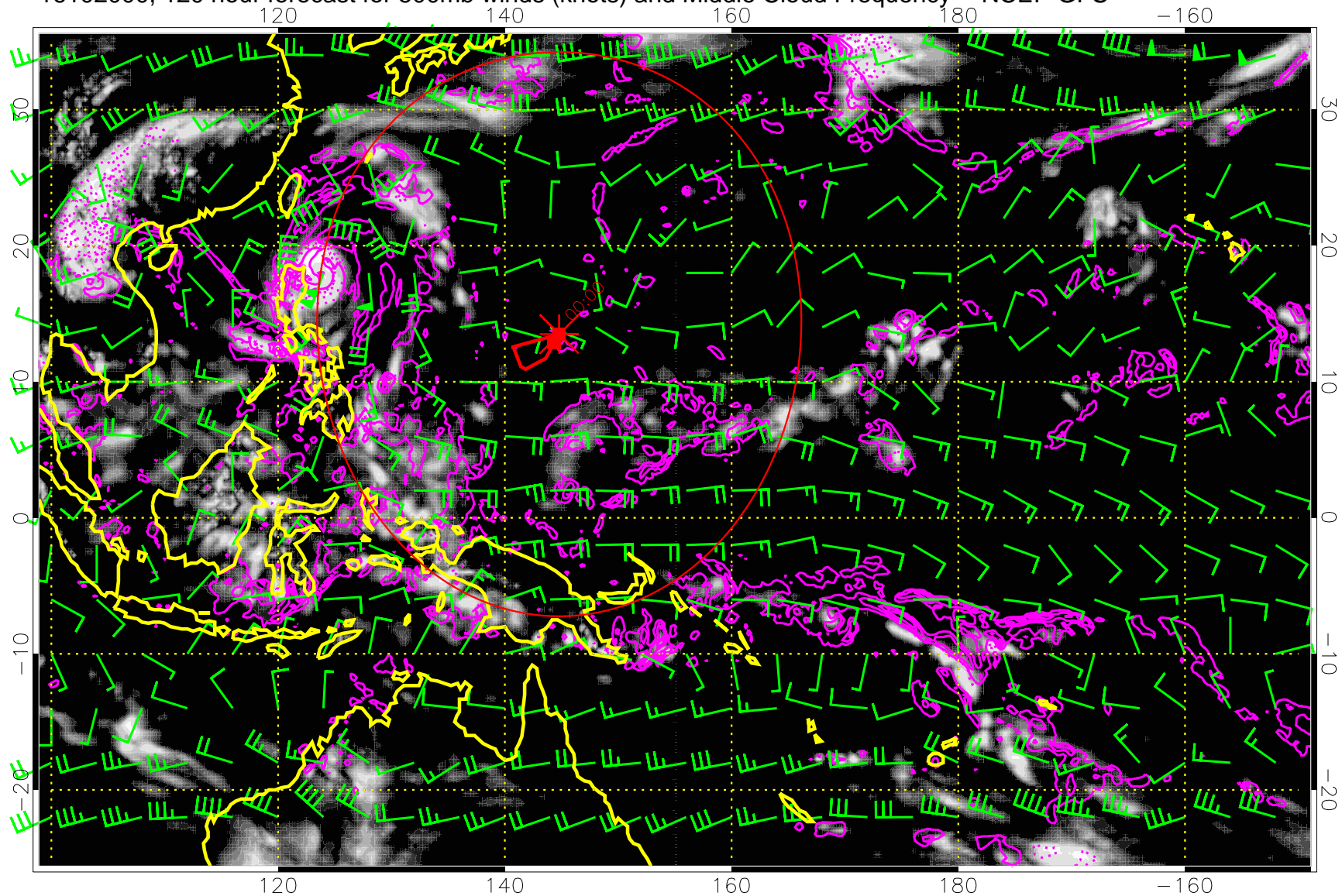
16101918, 114 hour forecast for 500mb winds (knots) and Middle Cloud Frequency -- NCEP GFS



Precip (tot dot, conv sol) mm/day 40 mm/day contours, min 20

Range ring of 2304 km

16102000, 120 hour forecast for 500mb winds (knots) and Middle Cloud Frequency -- NCEP GFS



0.0 0.2 0.4 0.6 0.8 1.0
Middle Cloud Frequency

Precip (tot dot, conv sol) mm/day 40 mm/day contours, min 20

Range ring of 2304 km