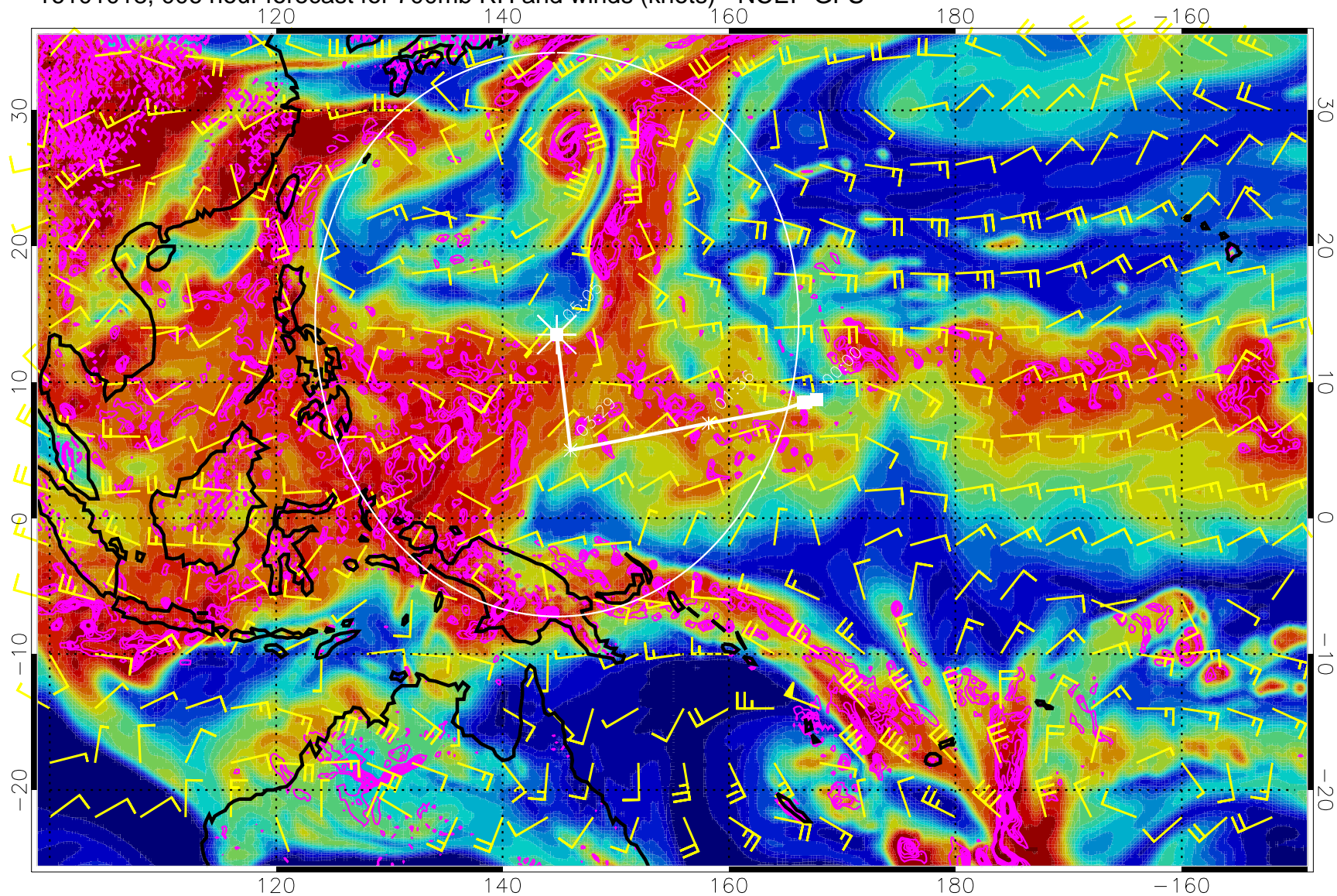


16101018, 006 hour forecast for 700mb RH and winds (knots) - NCEP GFS



Negative Omegas less than  $-0.3$ , contours of  $0.3$  Pa/s

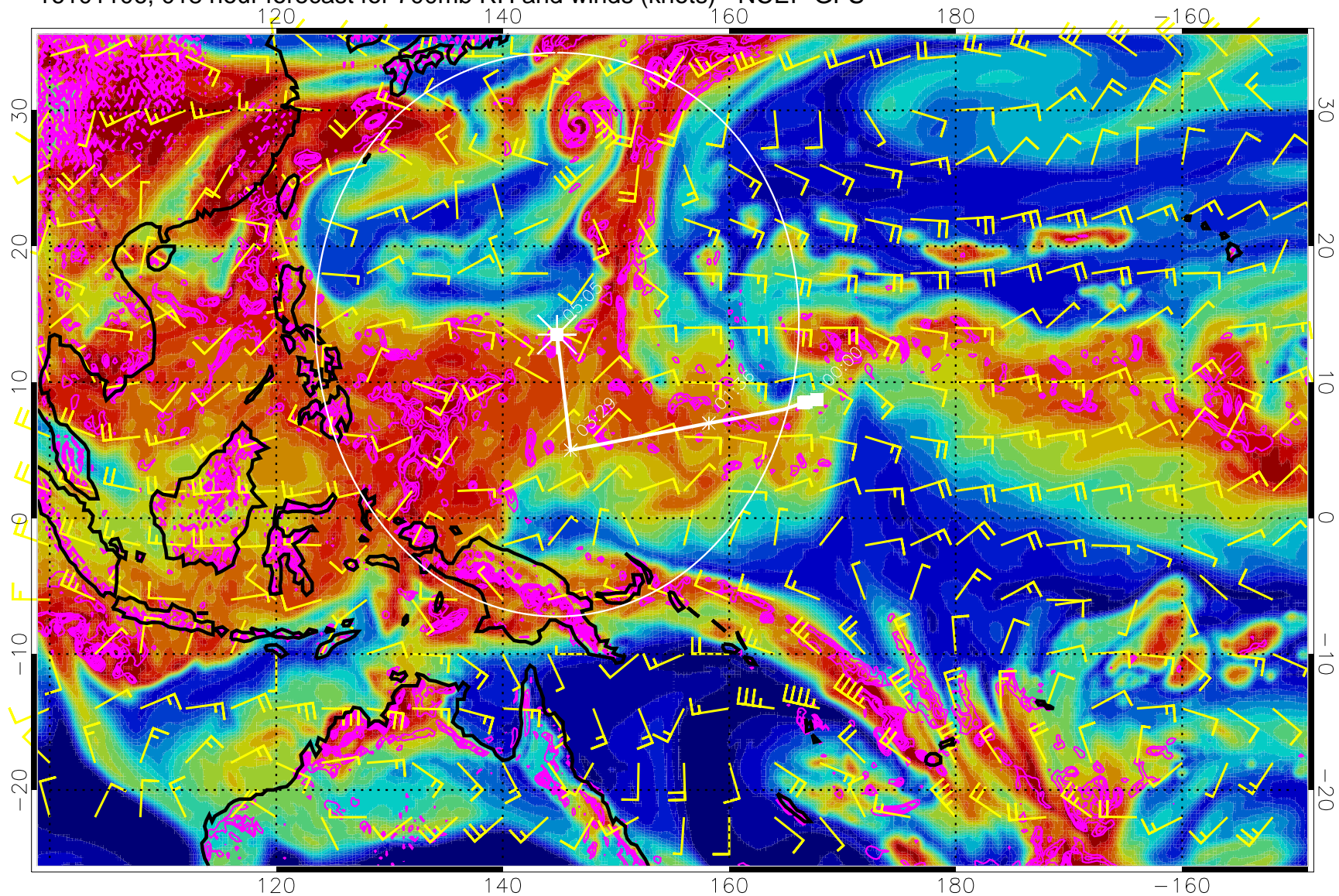
Range ring of 2304 km







16101106, 018 hour forecast for 700mb RH and winds (knots) - NCEP GFS

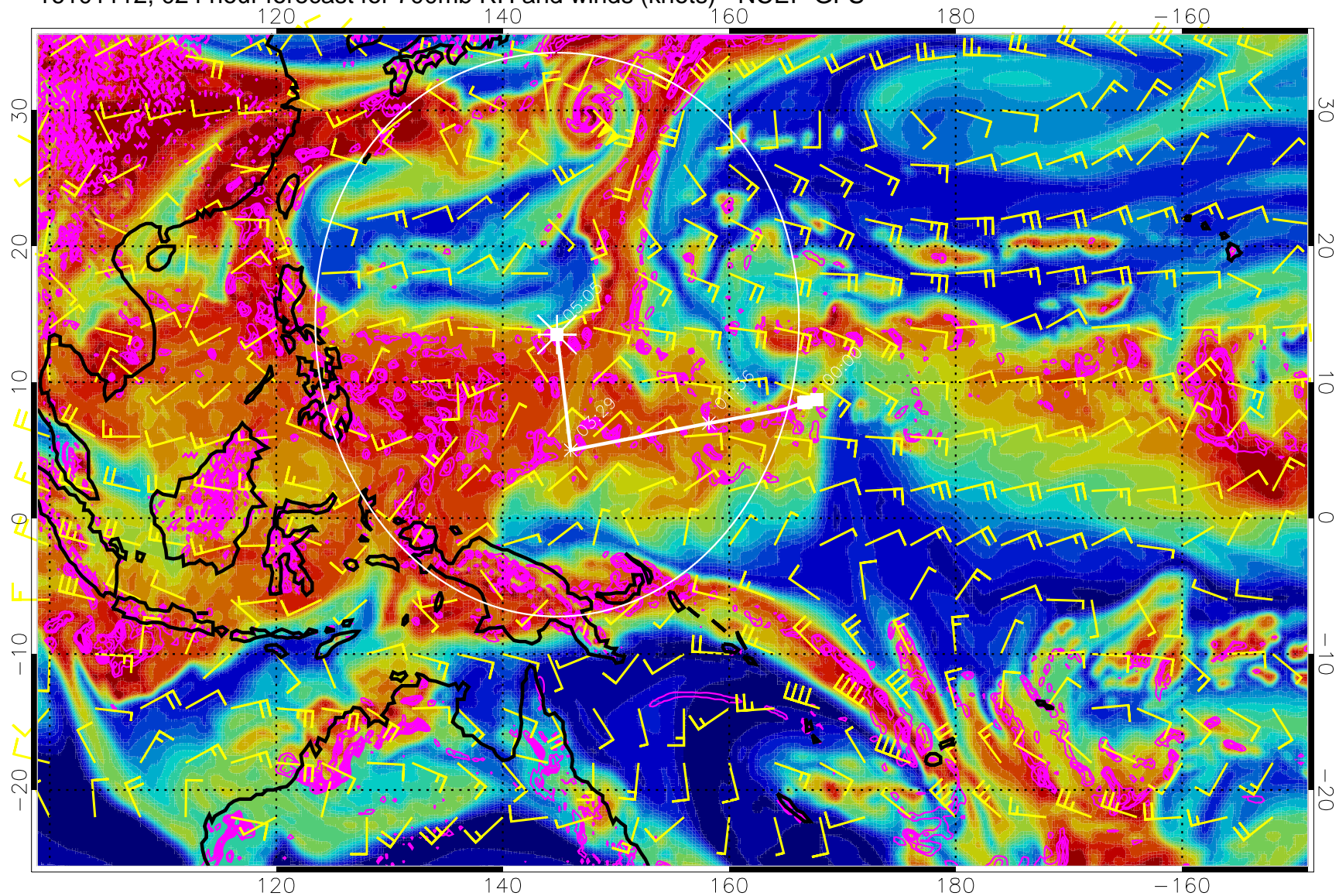


Negative Omegas less than  $-0.3$ , contours of  $0.3$  Pa/s

Range ring of 2304 km



16101112, 024 hour forecast for 700mb RH and winds (knots) - NCEP GFS

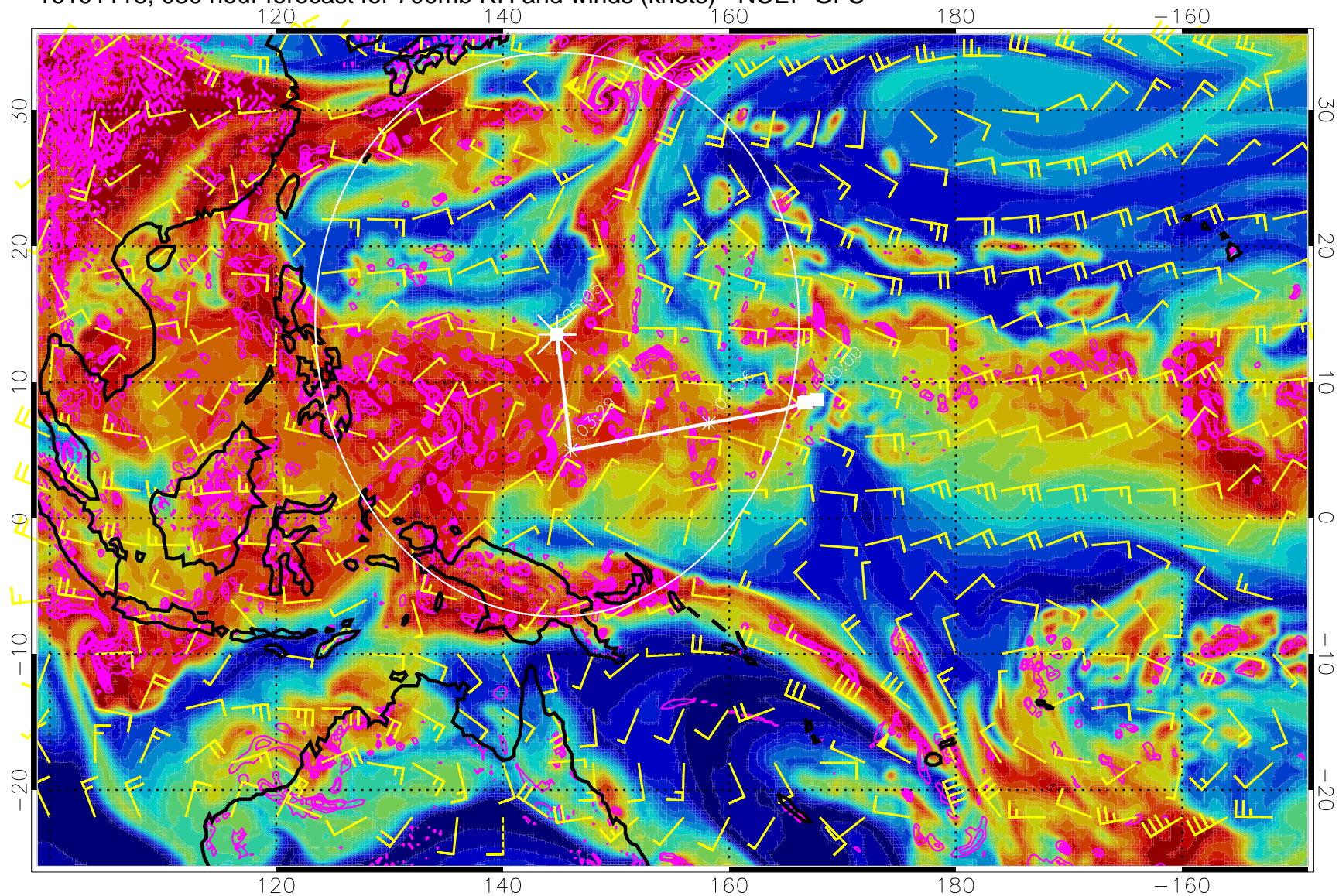


Negative Omegas less than  $-0.3$ , contours of  $0.3$  Pa/s

Range ring of 2304 km



16101118, 030 hour forecast for 700mb RH and winds (knots) - NCEP GFS



Negative Omegas less than  $-0.3$ , contours of  $0.3 \text{ Pa/s}$

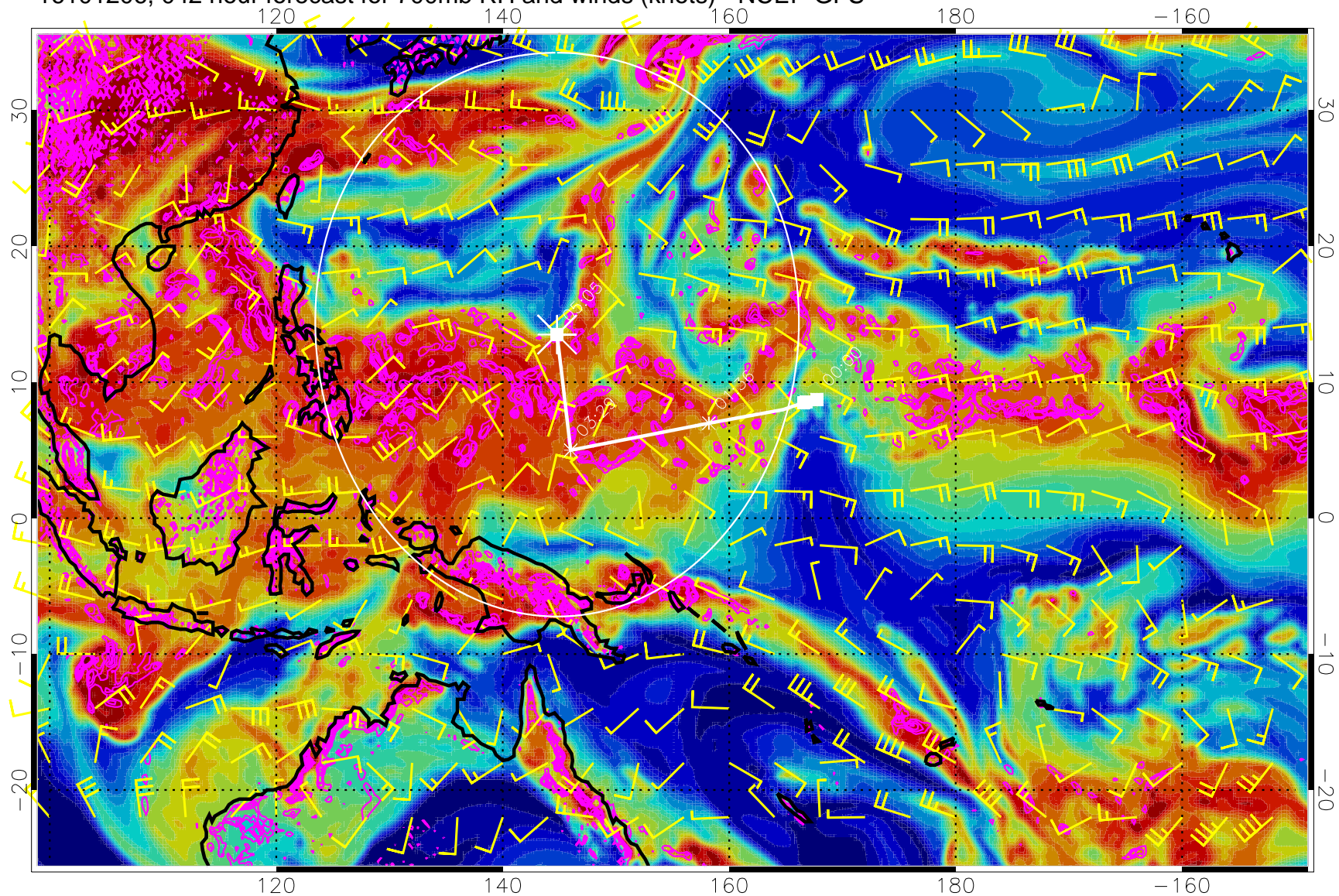
Range ring of 2304 km







16101206, 042 hour forecast for 700mb RH and winds (knots) - NCEP GFS

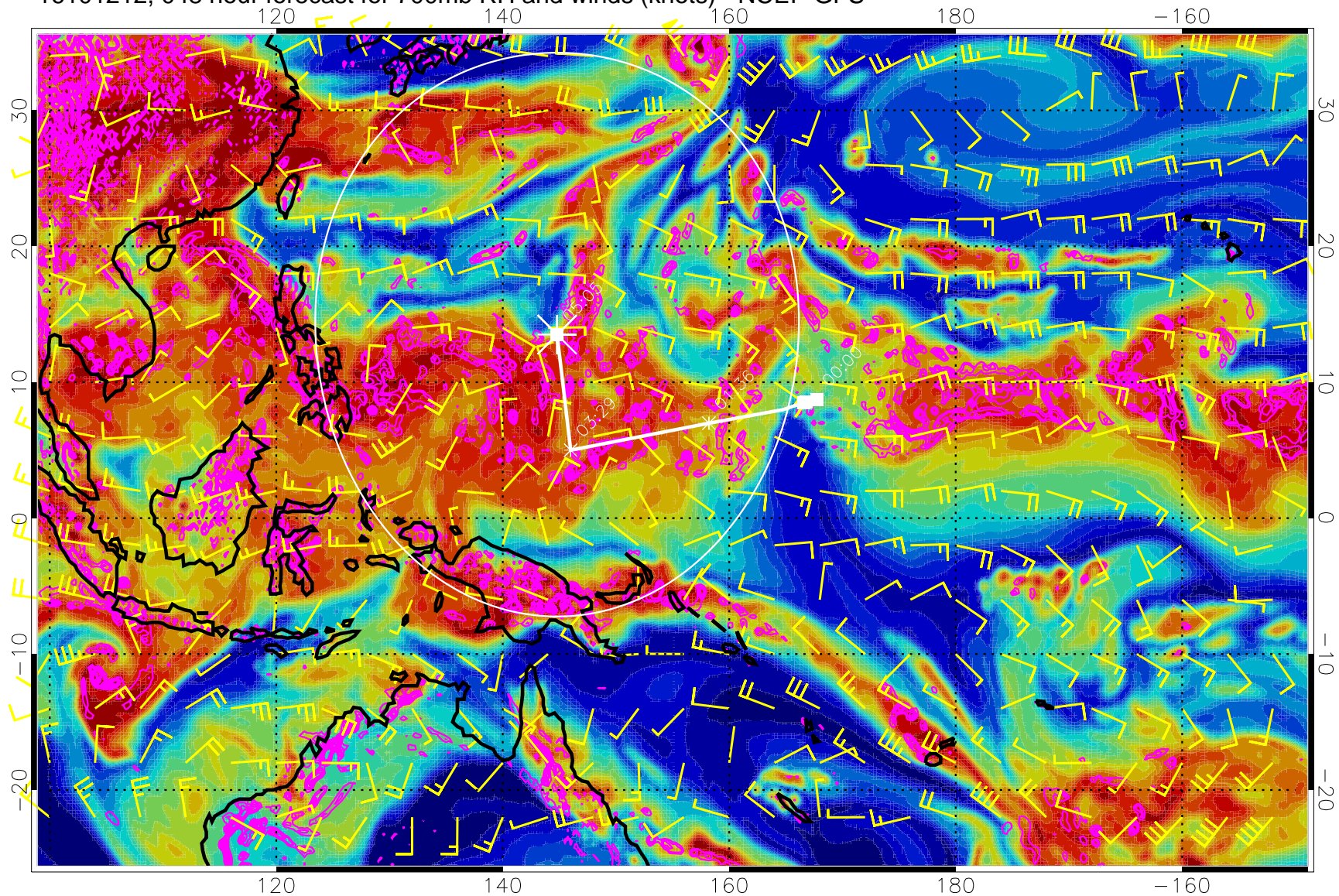


Negative Omegas less than  $-0.3$ , contours of  $0.3$  Pa/s

Range ring of 2304 km



16101212, 048 hour forecast for 700mb RH and winds (knots) - NCEP GFS

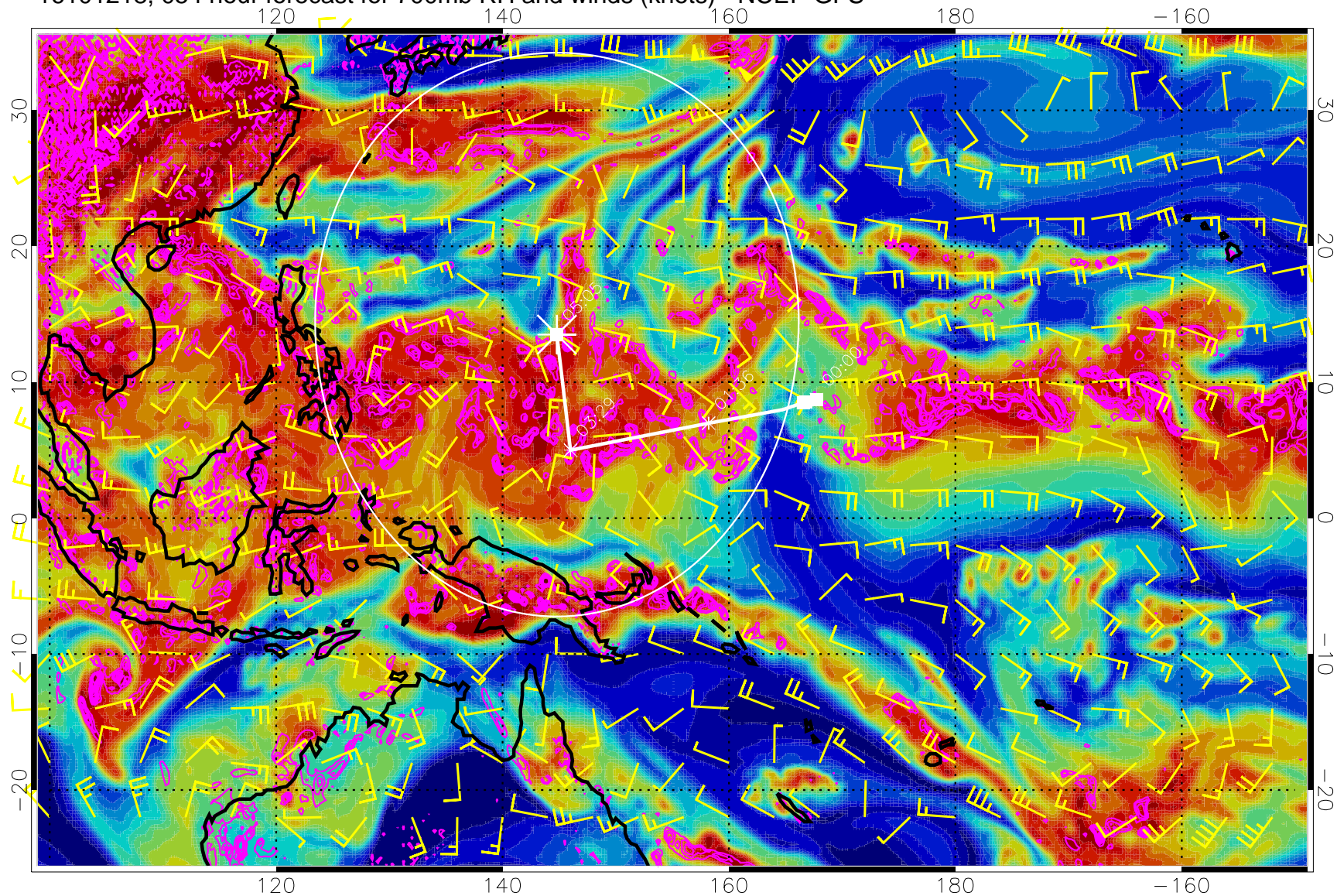


Negative Omegas less than  $-0.3$ , contours of  $0.3$  Pa/s

Range ring of 2304 km



16101218, 054 hour forecast for 700mb RH and winds (knots) - NCEP GFS

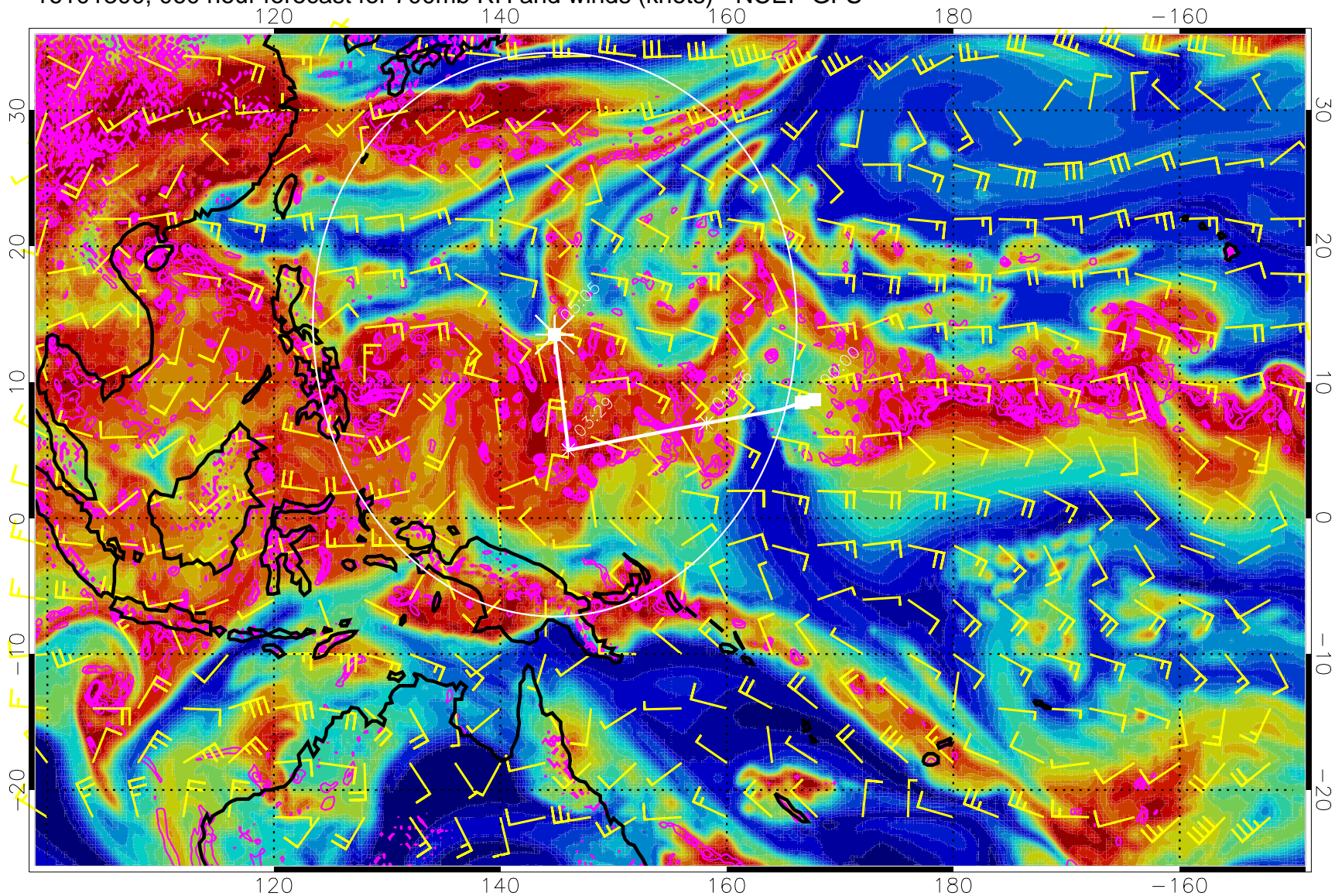


Negative Omegas less than  $-0.3$ , contours of  $0.3 \text{ Pa/s}$

Range ring of 2304 km



16101300, 060 hour forecast for 700mb RH and winds (knots) - NCEP GFS

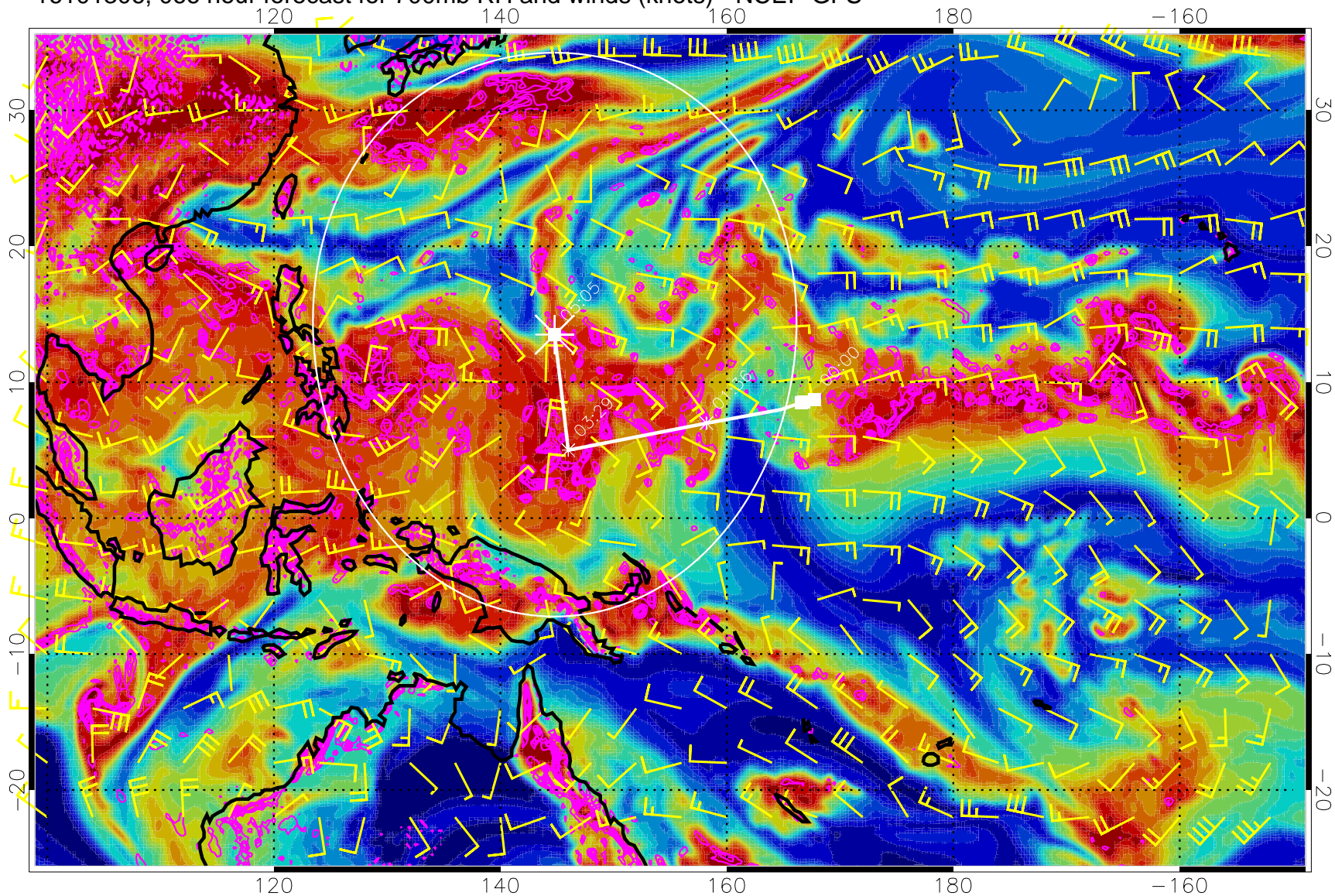


Negative Omegas less than  $-0.3$ , contours of  $0.3$  Pa/s

Range ring of 2304 km



16101306, 066 hour forecast for 700mb RH and winds (knots) - NCEP GFS

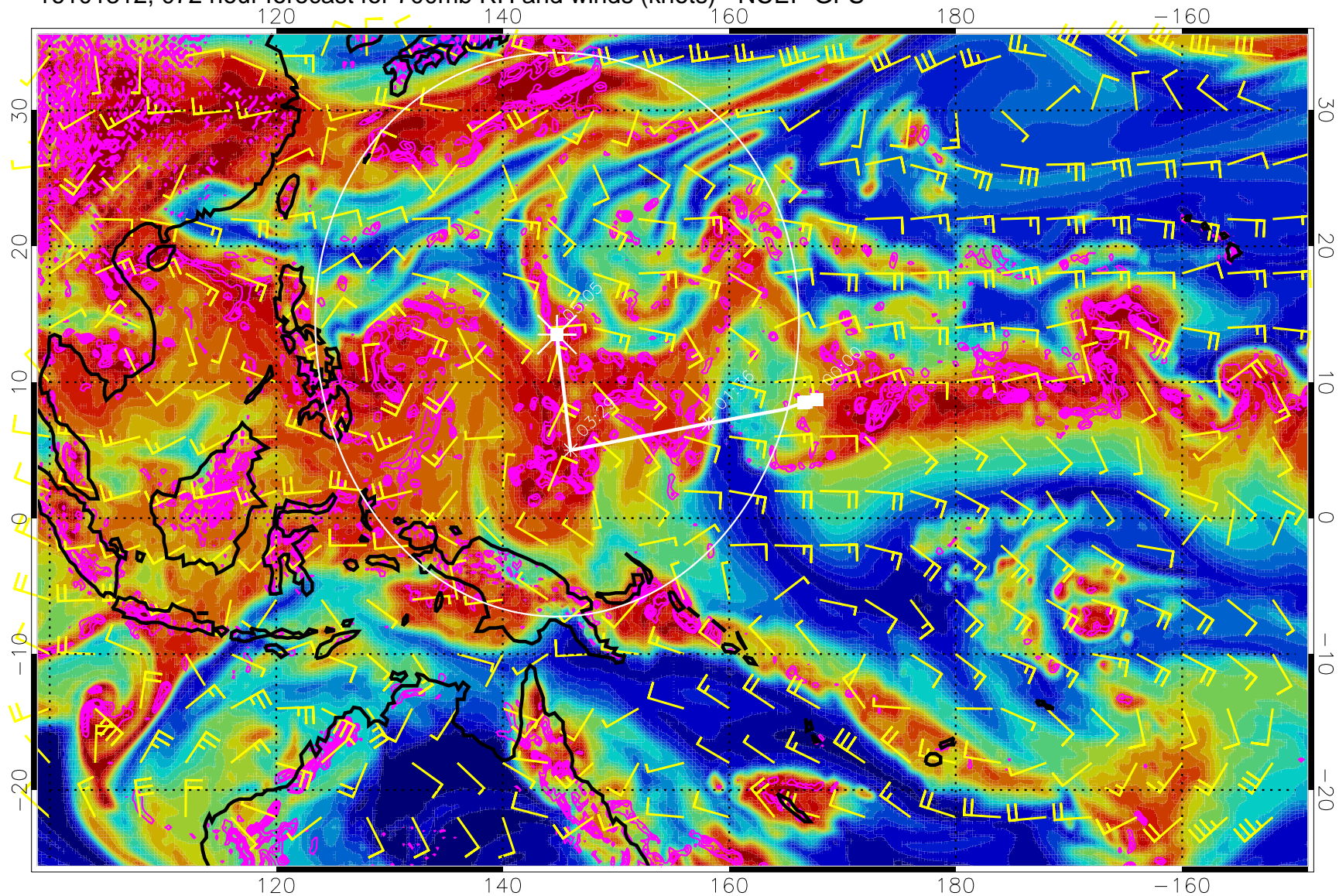


Negative Omegas less than  $-0.3$ , contours of  $0.3$  Pa/s

Range ring of 2304 km



16101312, 072 hour forecast for 700mb RH and winds (knots) - NCEP GFS

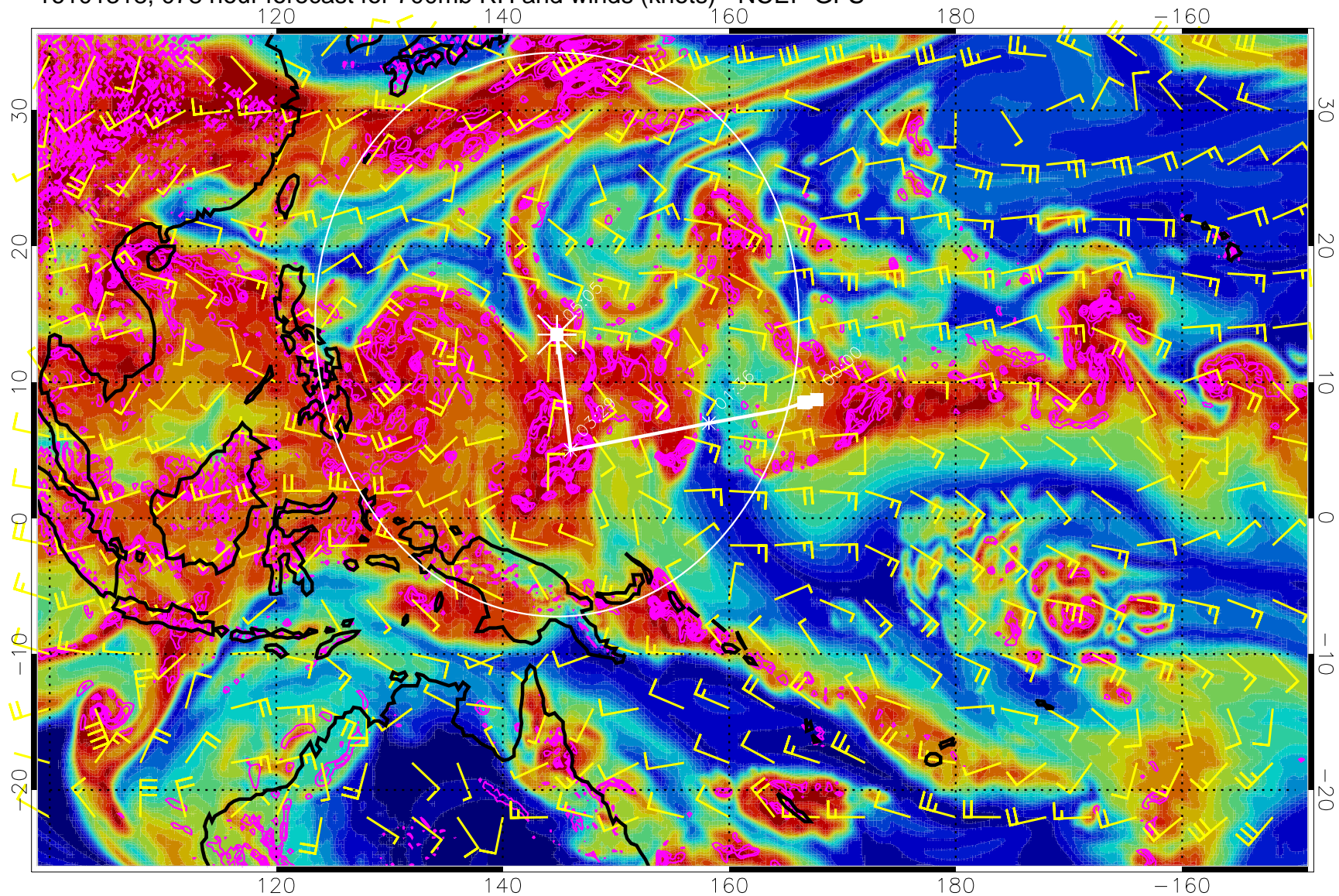


Negative Omegas less than  $-0.3$ , contours of  $0.3$  Pa/s

Range ring of 2304 km



16101318, 078 hour forecast for 700mb RH and winds (knots) - NCEP GFS

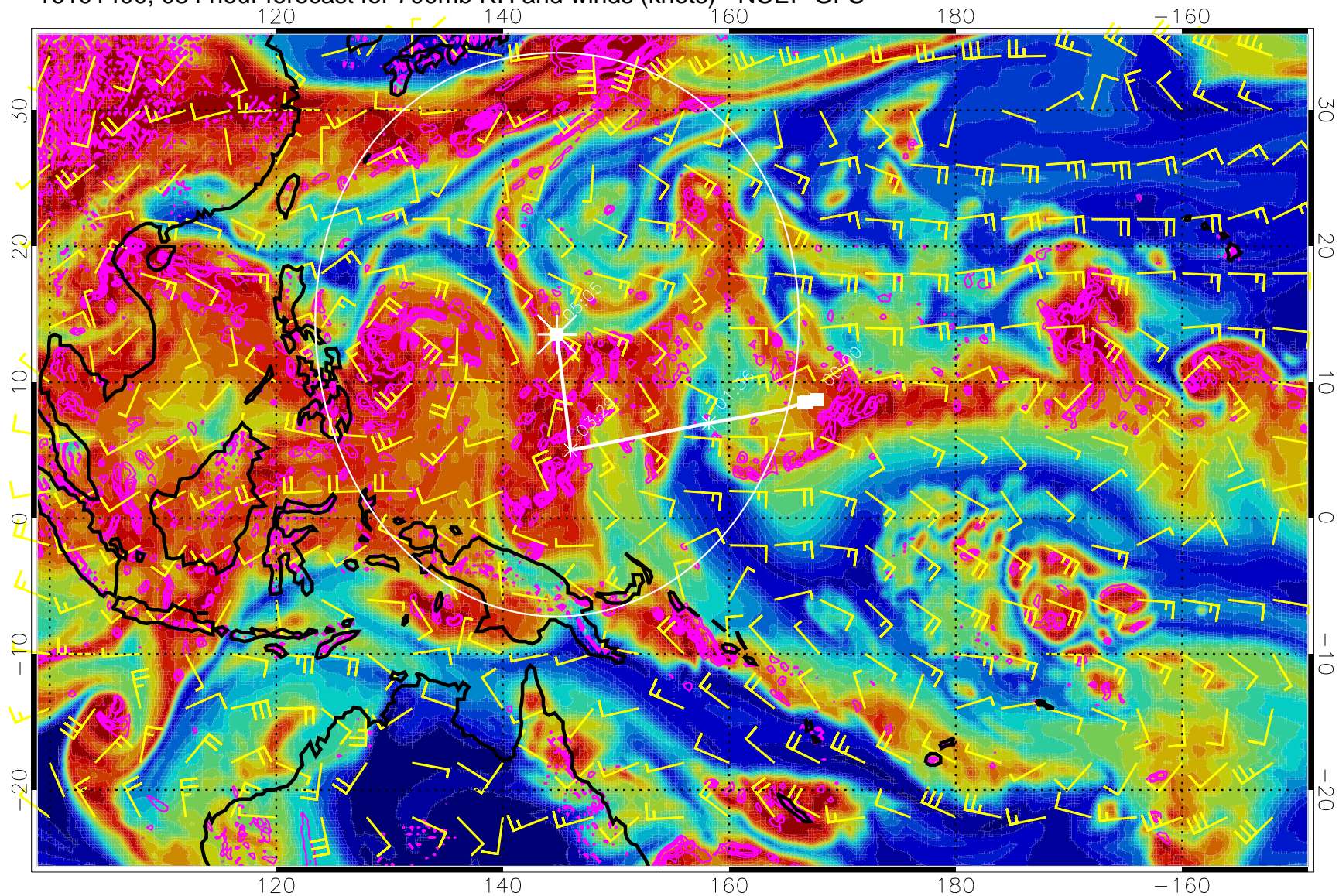


Negative Omegas less than  $-0.3$ , contours of  $0.3$  Pa/s

Range ring of 2304 km



16101400, 084 hour forecast for 700mb RH and winds (knots) - NCEP GFS

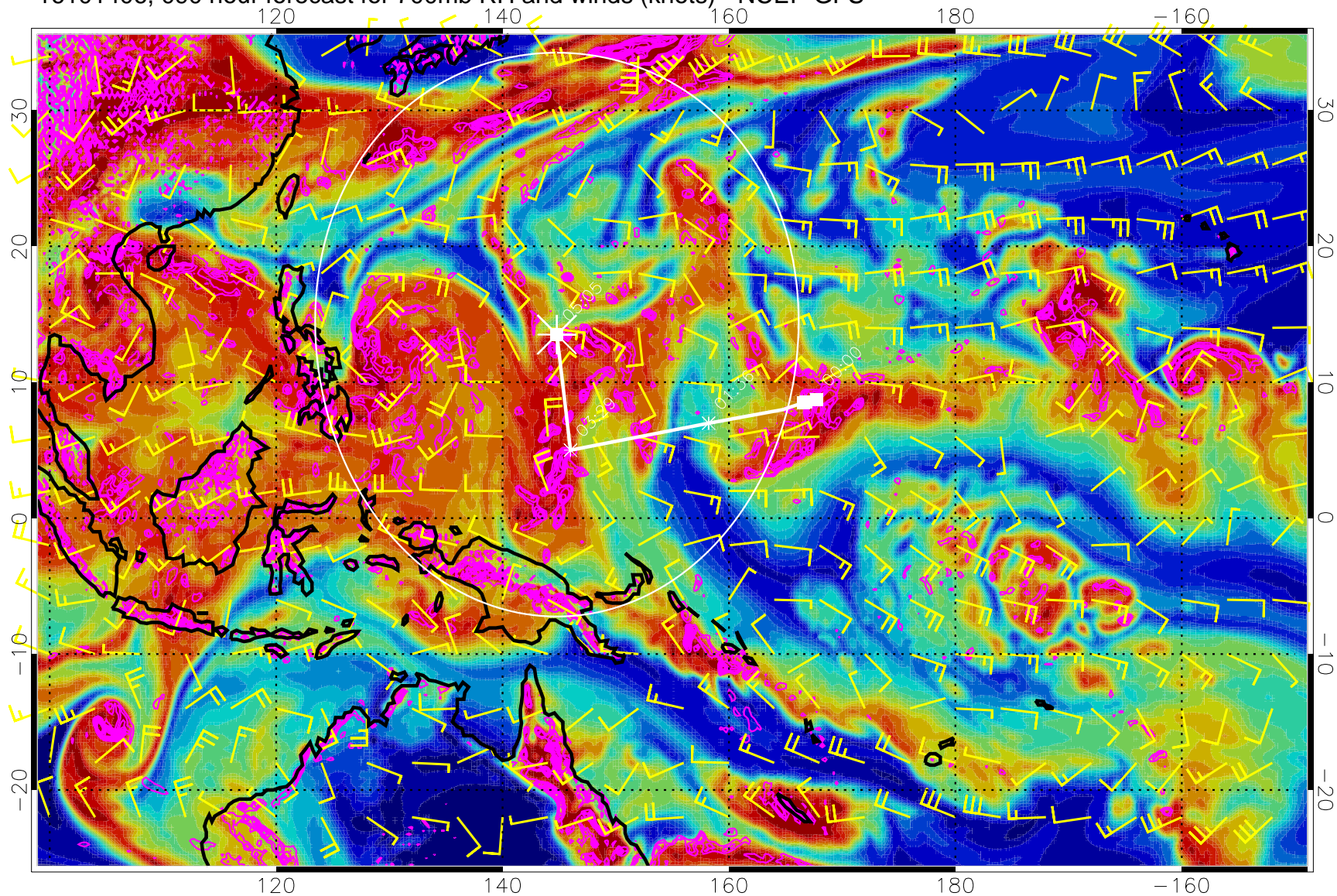


Negative Omegas less than  $-0.3$ , contours of  $0.3$  Pa/s

Range ring of 2304 km



16101406, 090 hour forecast for 700mb RH and winds (knots) - NCEP GFS

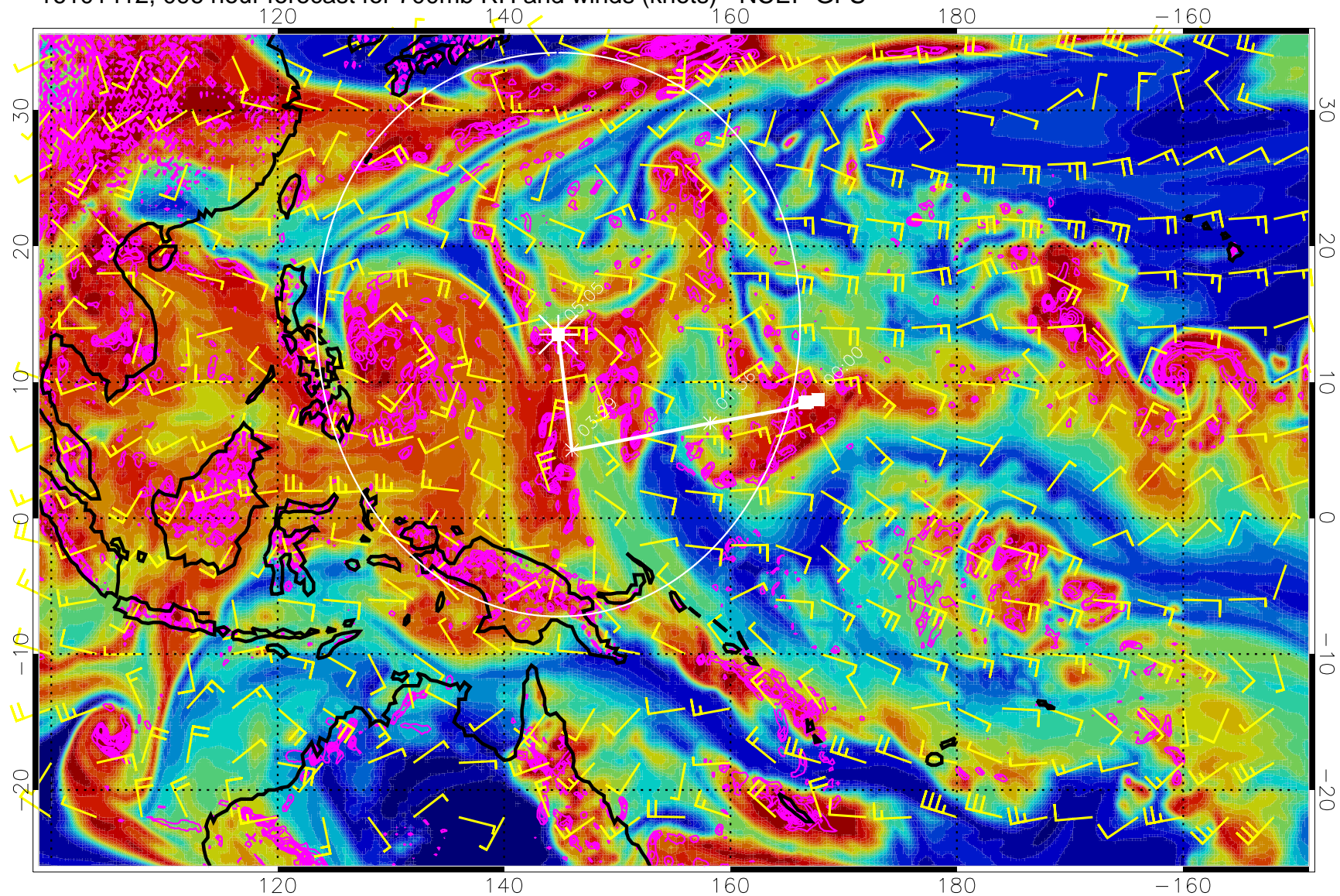


Negative Omegas less than  $-0.3$ , contours of  $0.3$  Pa/s

Range ring of 2304 km



16101412, 096 hour forecast for 700mb RH and winds (knots) - NCEP GFS

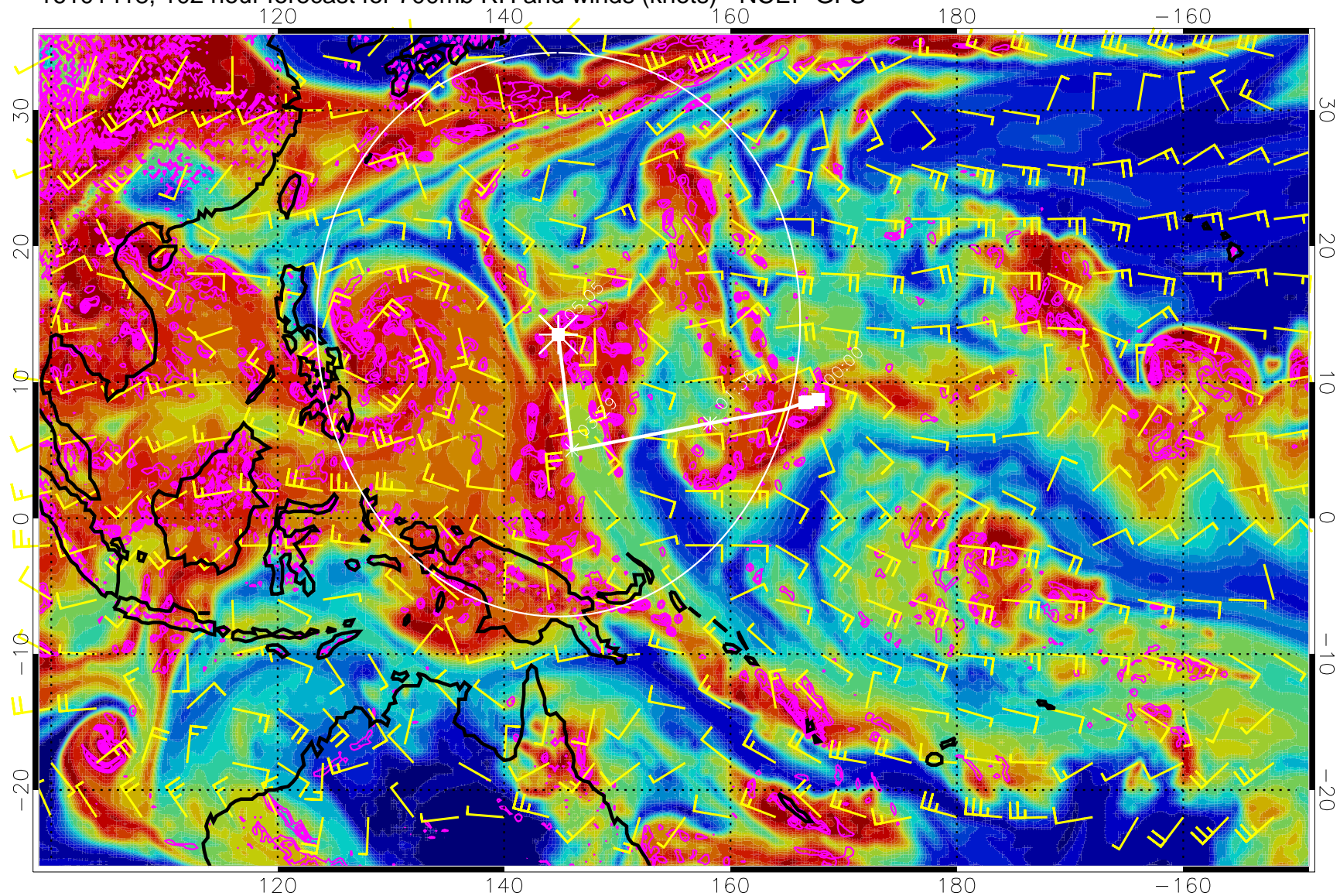


Negative Omegas less than  $-0.3$ , contours of  $0.3$  Pa/s

Range ring of 2304 km



16101418, 102 hour forecast for 700mb RH and winds (knots) - NCEP GFS

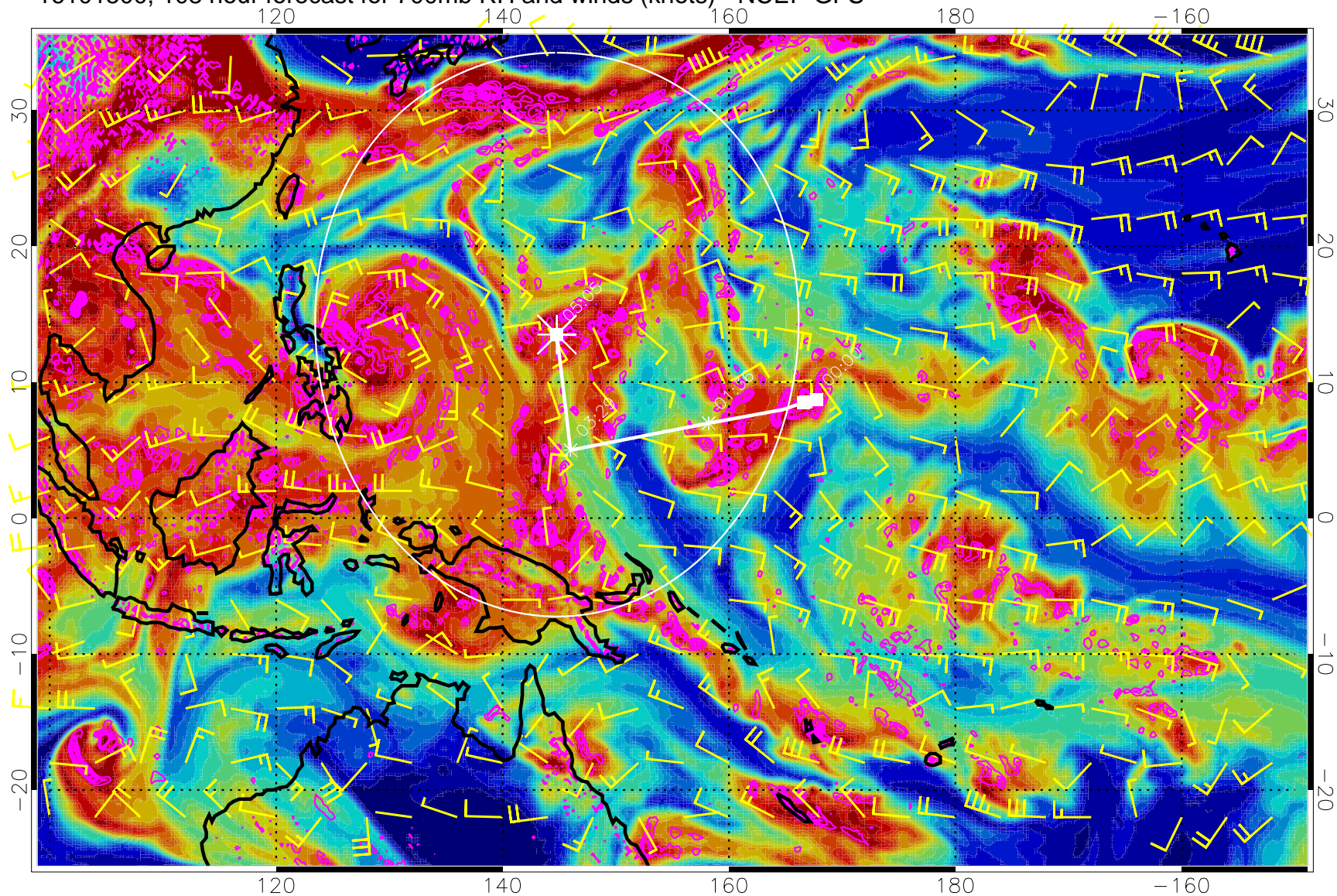


Negative Omegas less than  $-0.3$ , contours of  $0.3 \text{ Pa/s}$

Range ring of 2304 km



16101500, 108 hour forecast for 700mb RH and winds (knots) - NCEP GFS

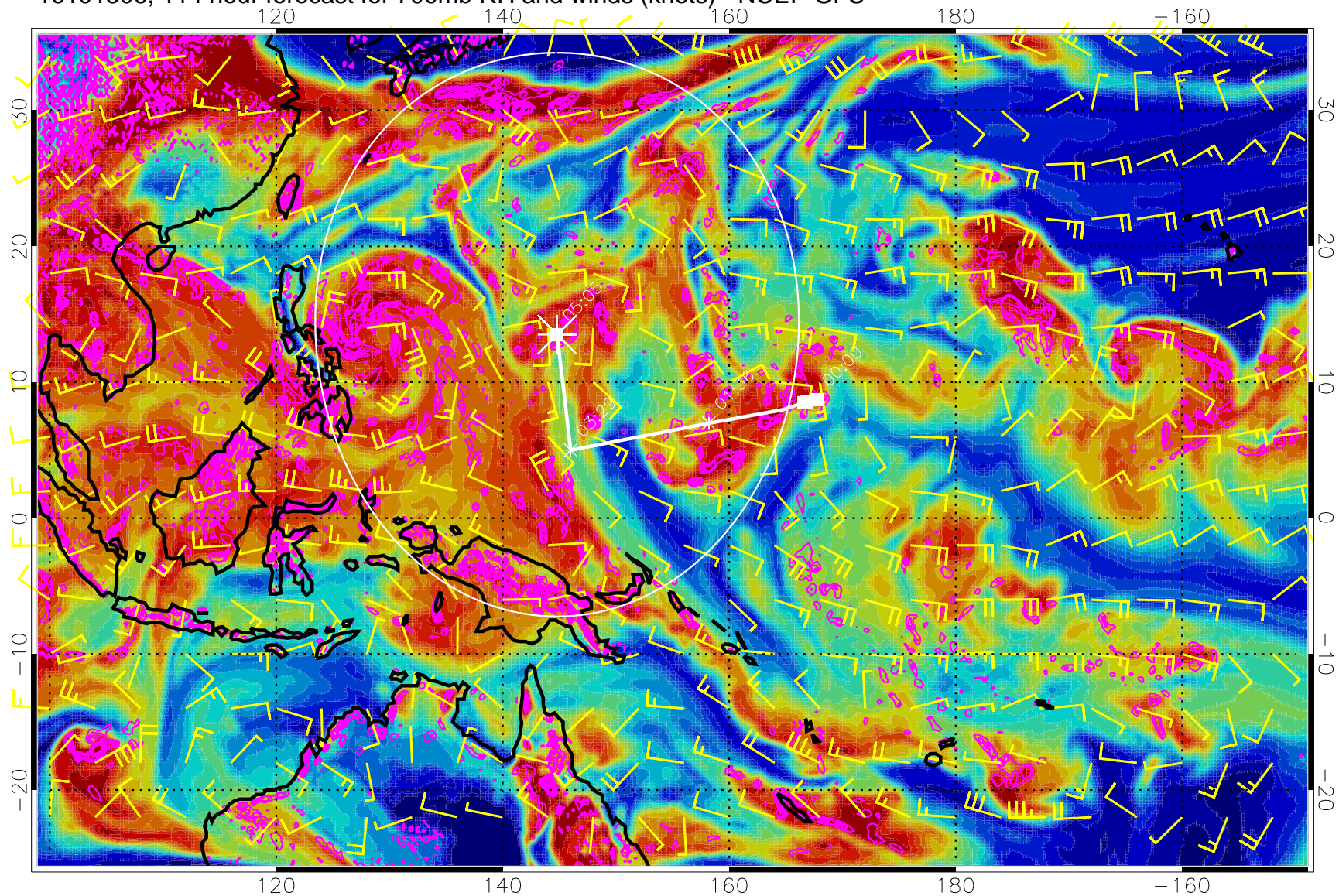


Negative Omegas less than  $-0.3$ , contours of  $0.3$  Pa/s

Range ring of 2304 km



16101506, 114 hour forecast for 700mb RH and winds (knots) - NCEP GFS

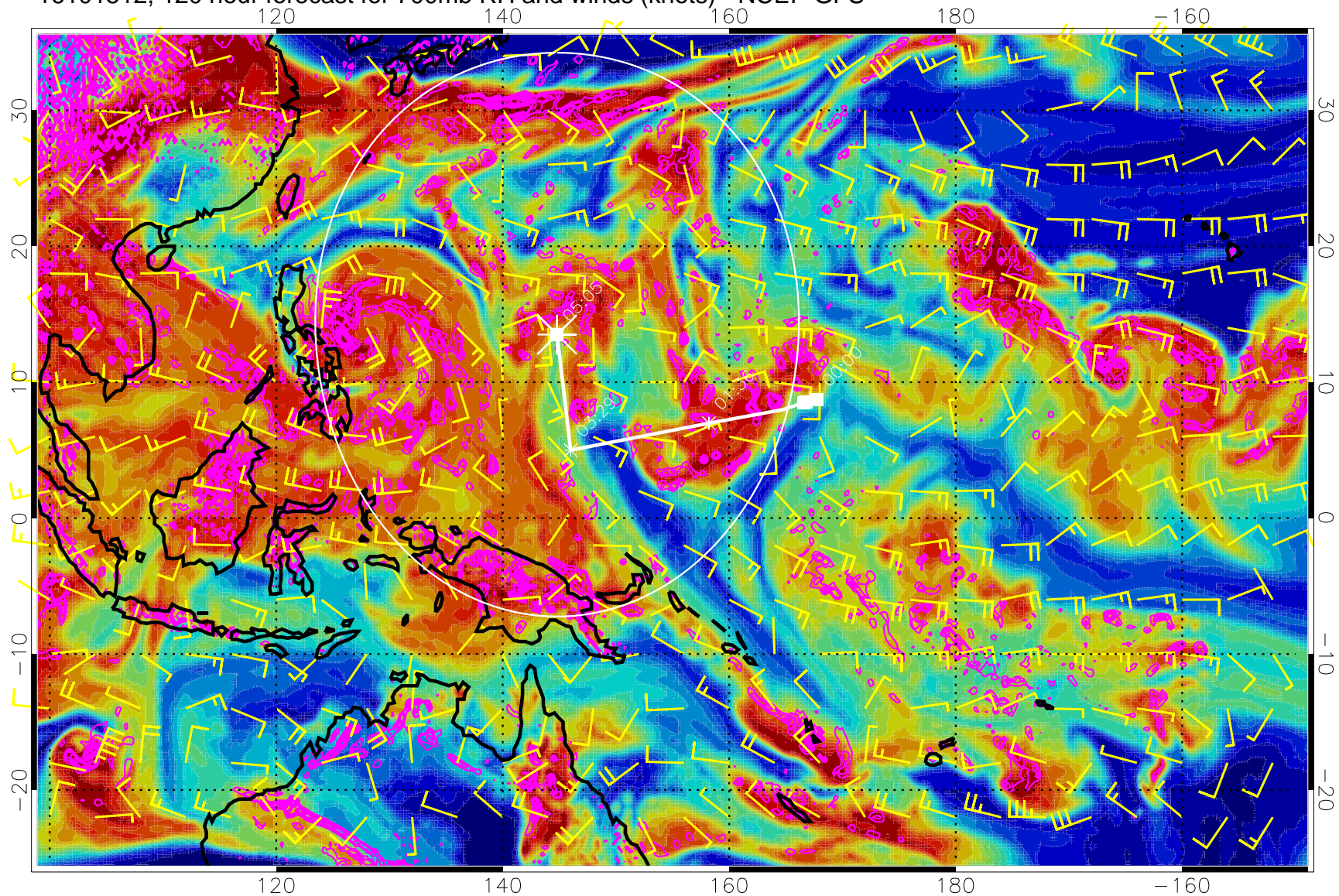


Negative Omegas less than  $-0.3$ , contours of  $0.3$  Pa/s

Range ring of 2304 km



16101512, 120 hour forecast for 700mb RH and winds (knots) - NCEP GFS



Negative Omegas less than  $-0.3$ , contours of  $0.3$  Pa/s

Range ring of 2304 km