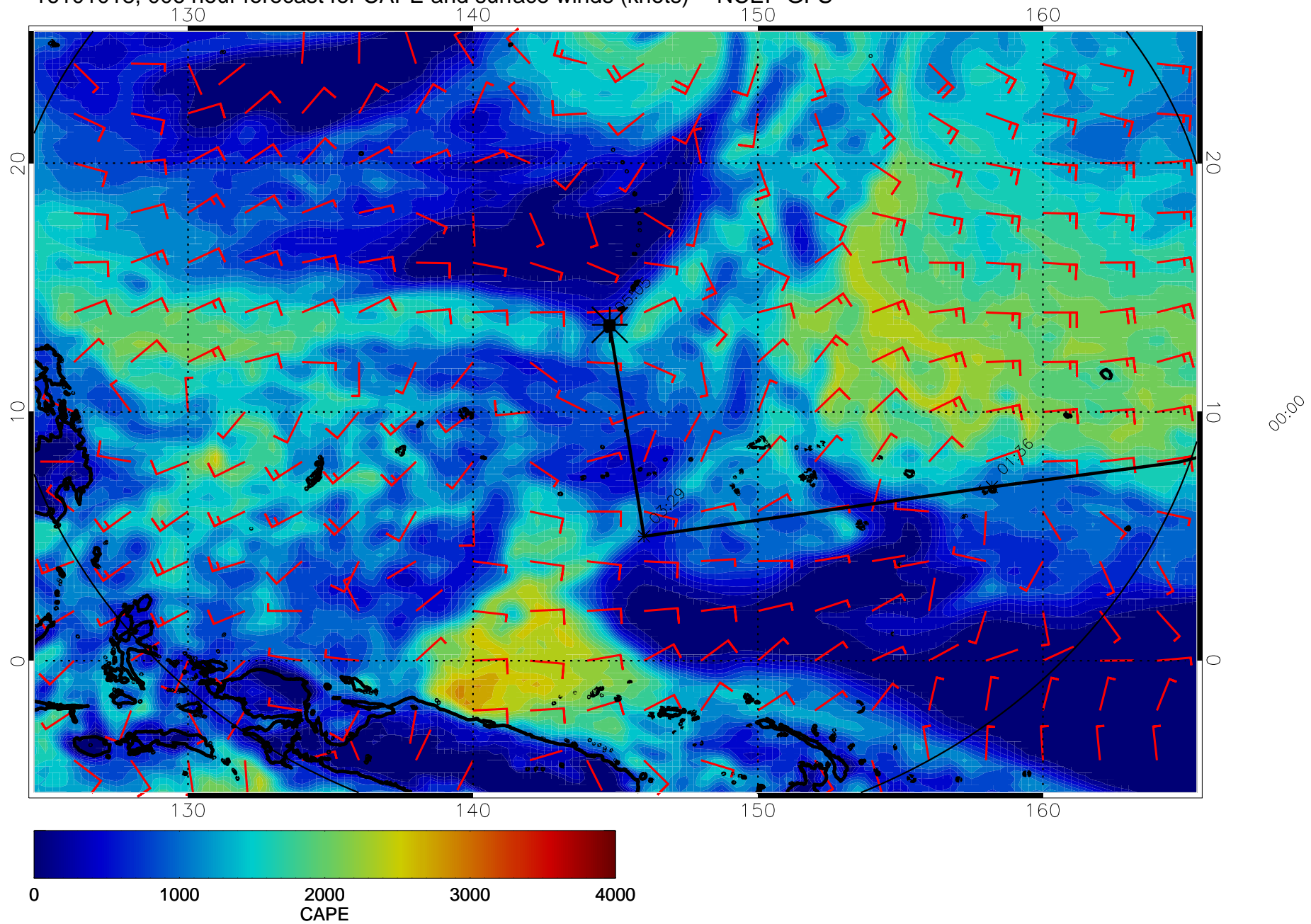
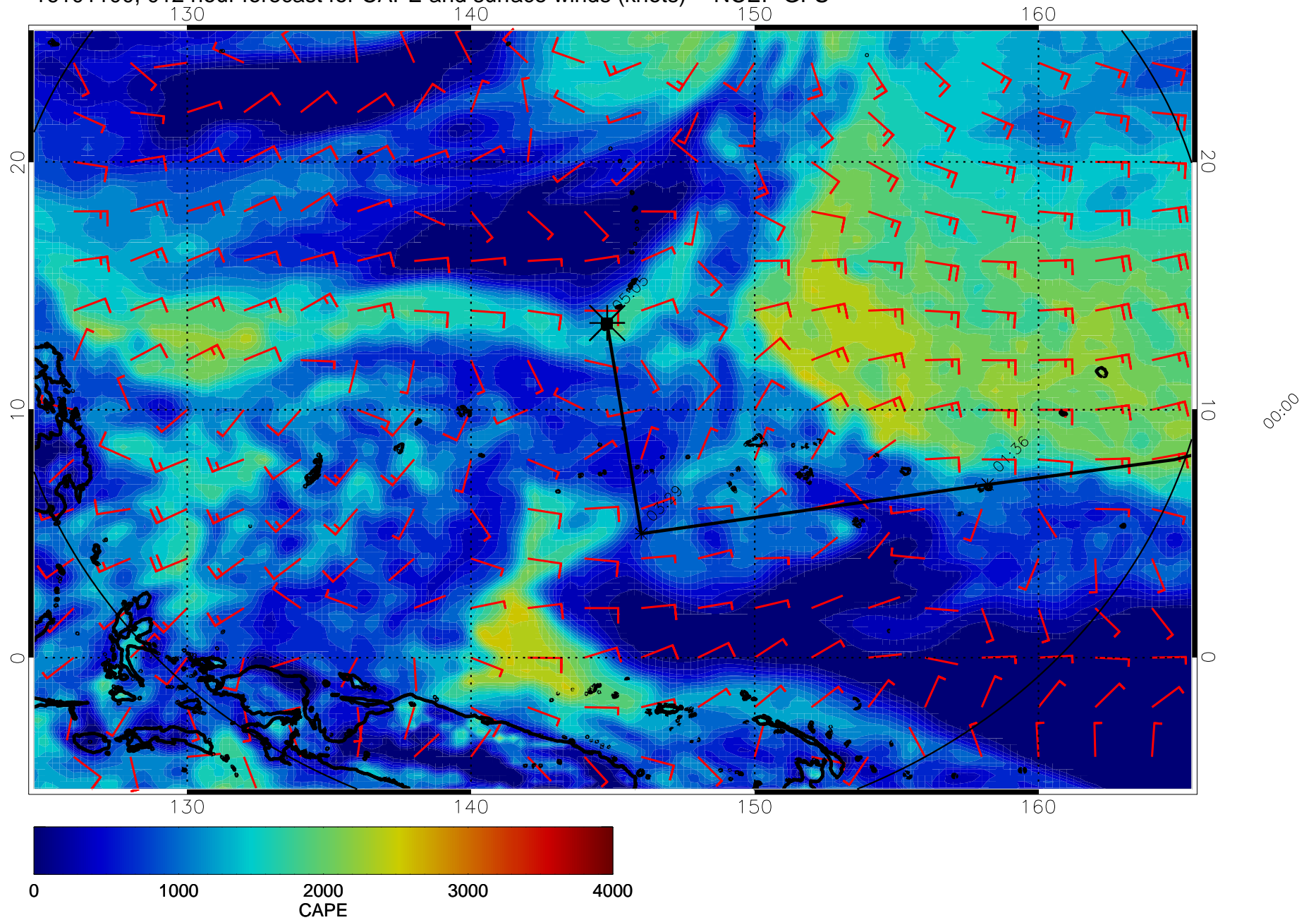


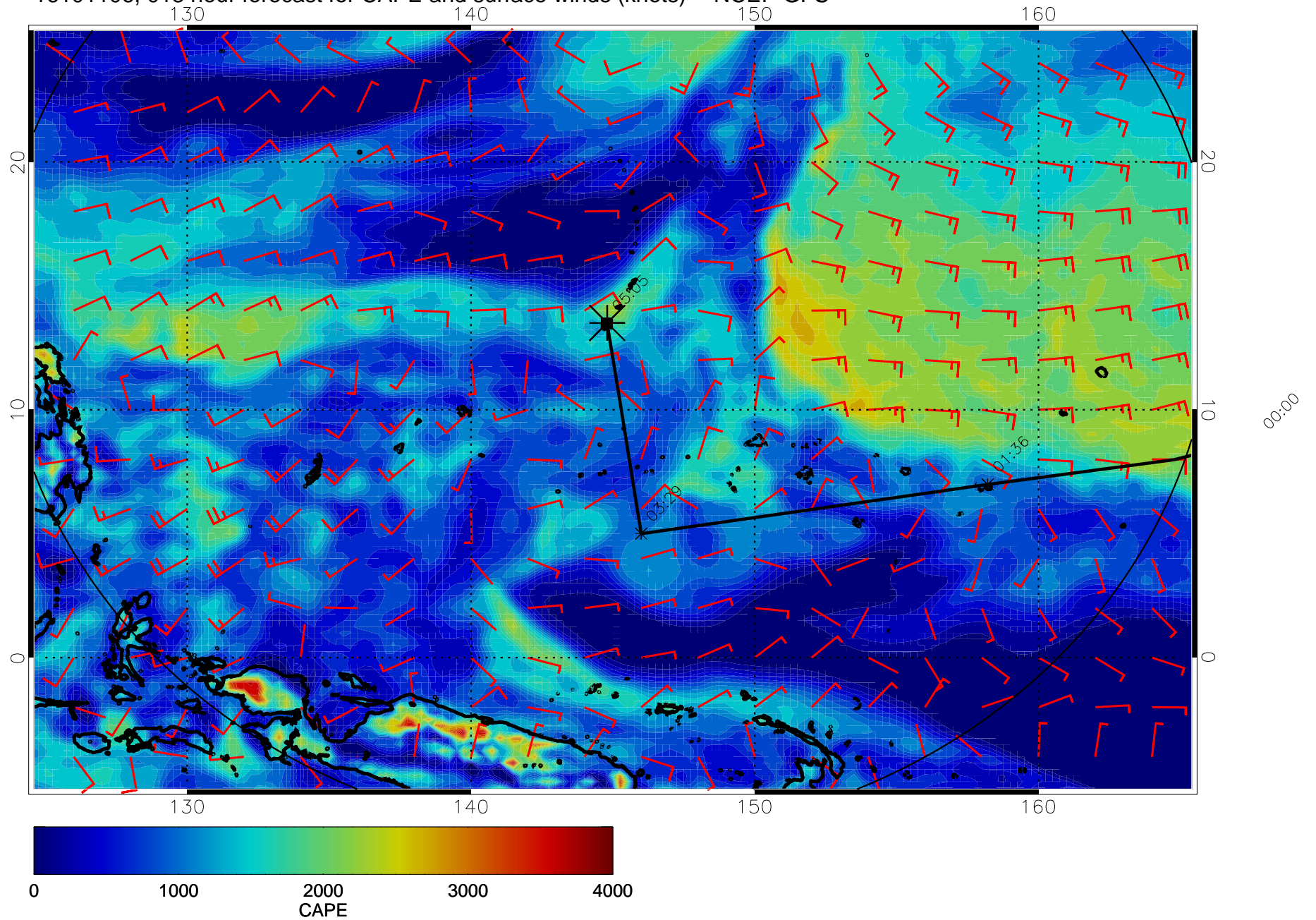
16101018, 006 hour forecast for CAPE and surface winds (knots) -- NCEP GFS



16101100, 012 hour forecast for CAPE and surface winds (knots) -- NCEP GFS

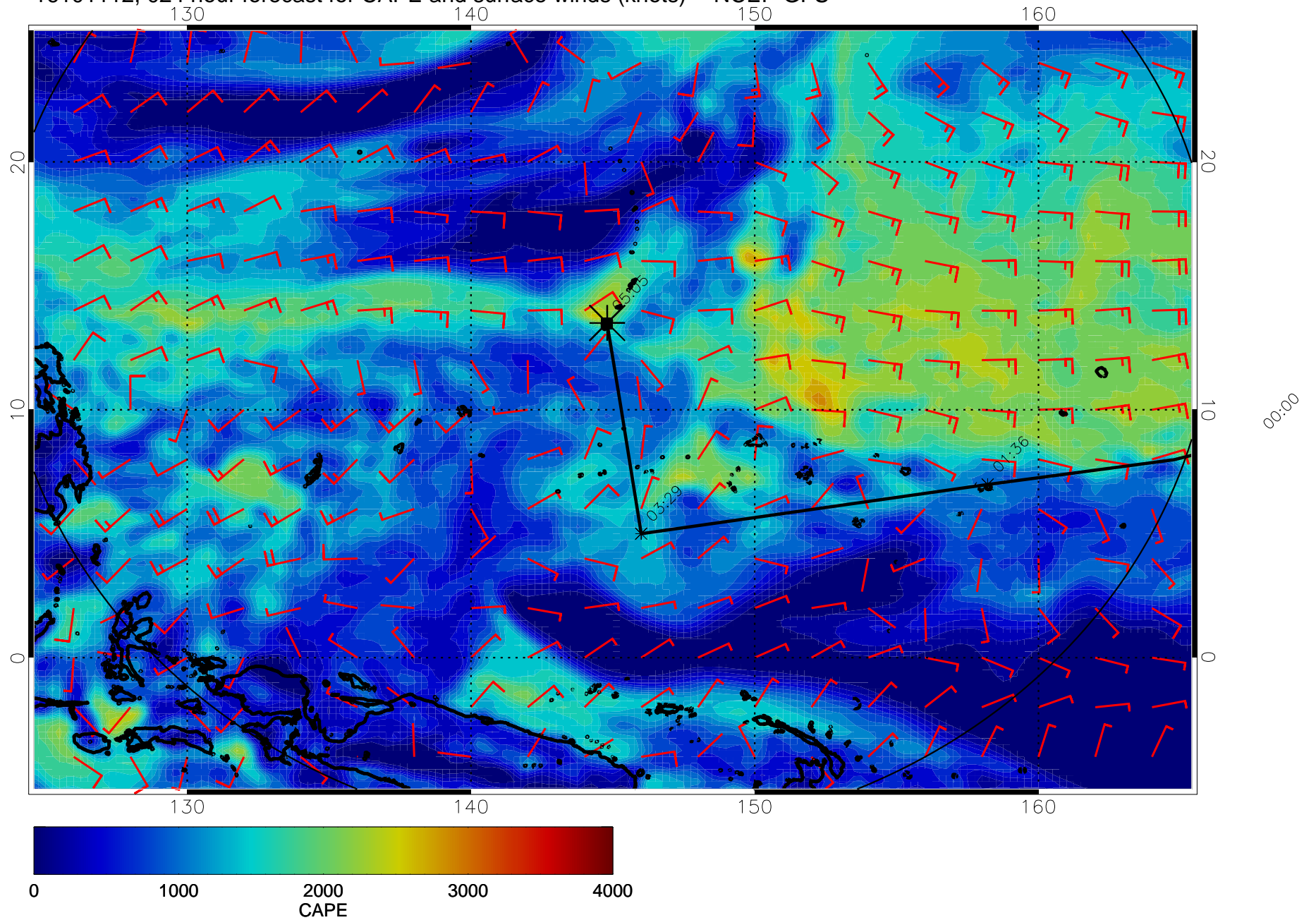


16101106, 018 hour forecast for CAPE and surface winds (knots) -- NCEP GFS



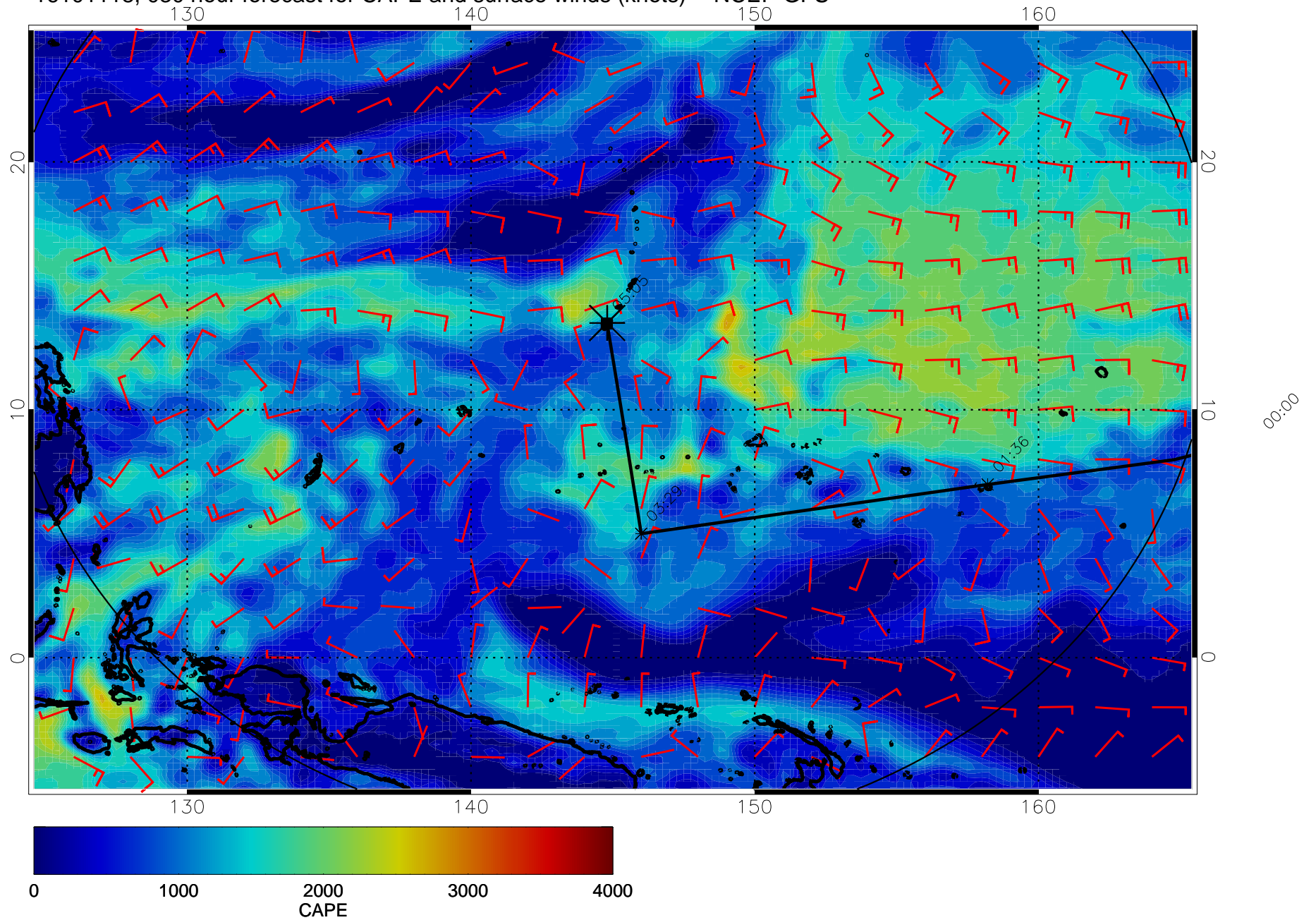


16101112, 024 hour forecast for CAPE and surface winds (knots) -- NCEP GFS

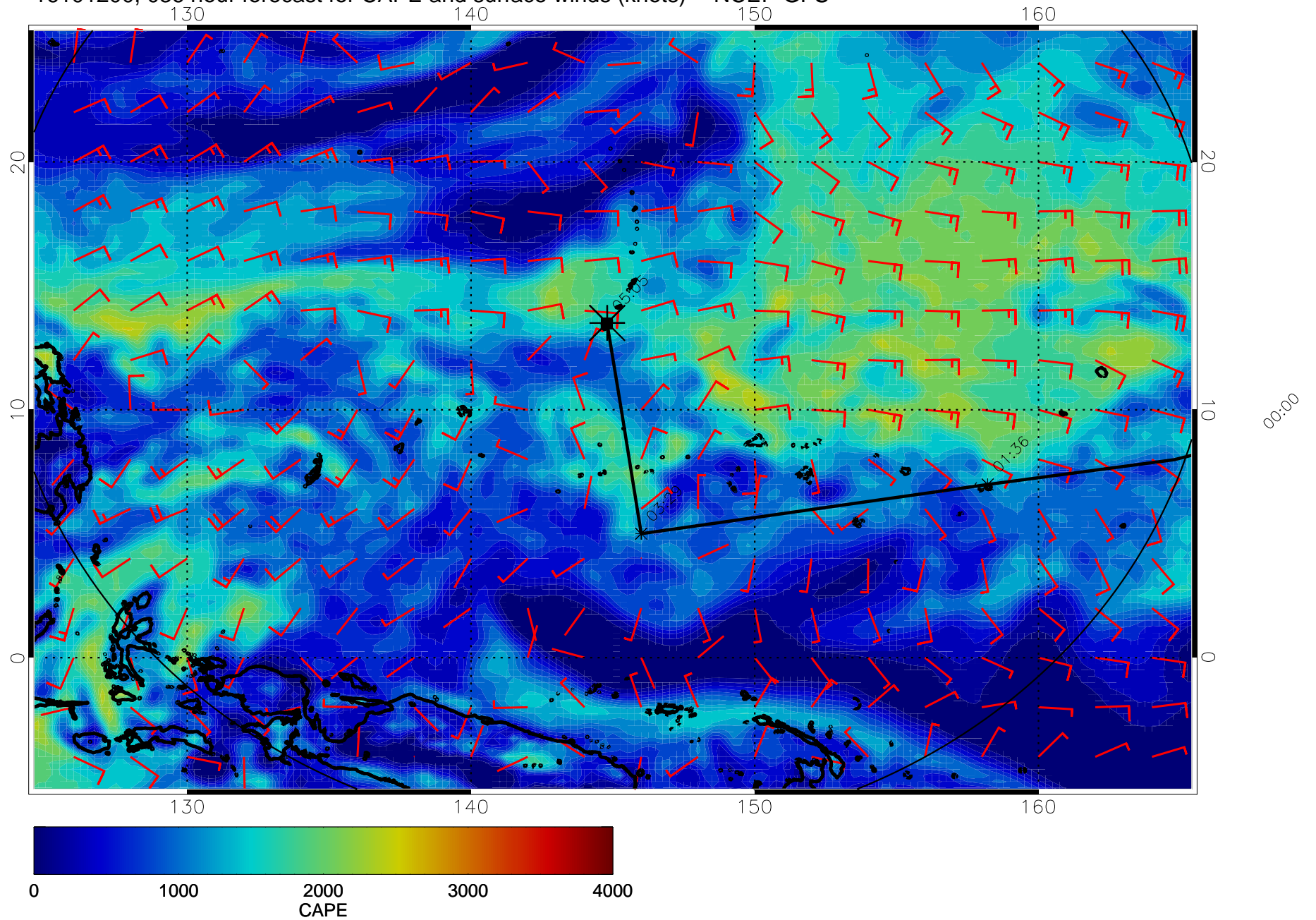




16101118, 030 hour forecast for CAPE and surface winds (knots) -- NCEP GFS

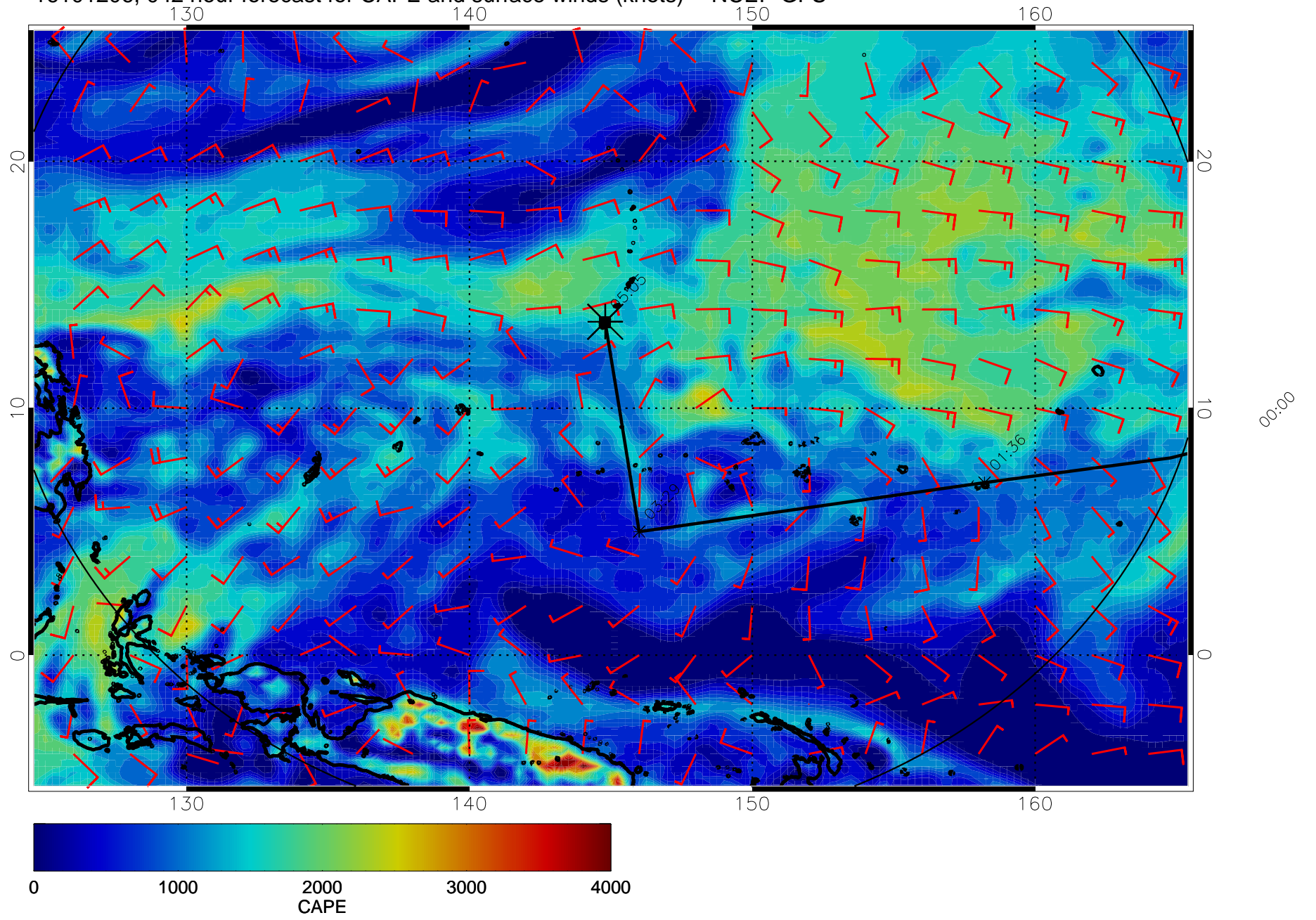


16101200, 036 hour forecast for CAPE and surface winds (knots) -- NCEP GFS



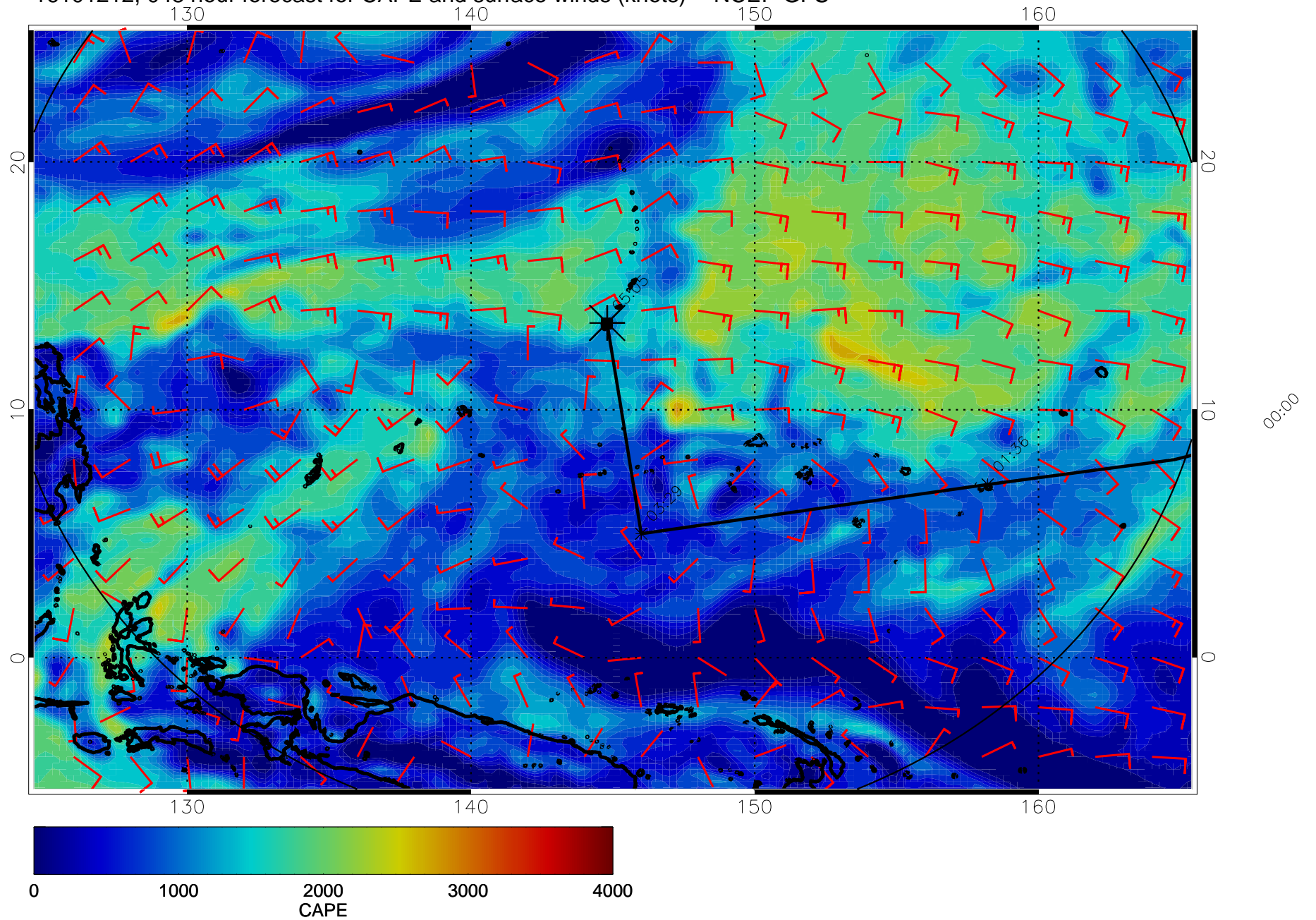


16101206, 042 hour forecast for CAPE and surface winds (knots) -- NCEP GFS

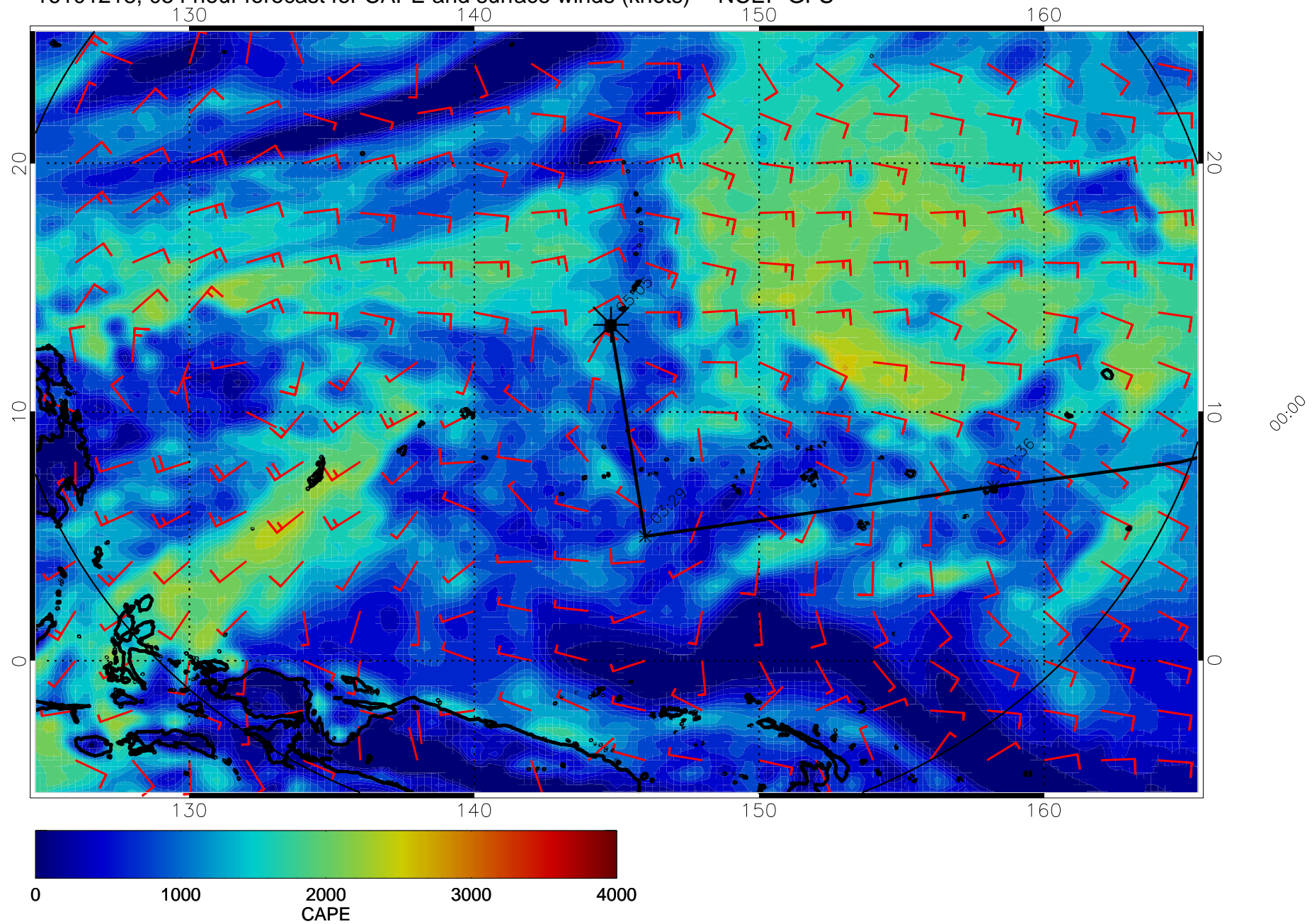




16101212, 048 hour forecast for CAPE and surface winds (knots) -- NCEP GFS

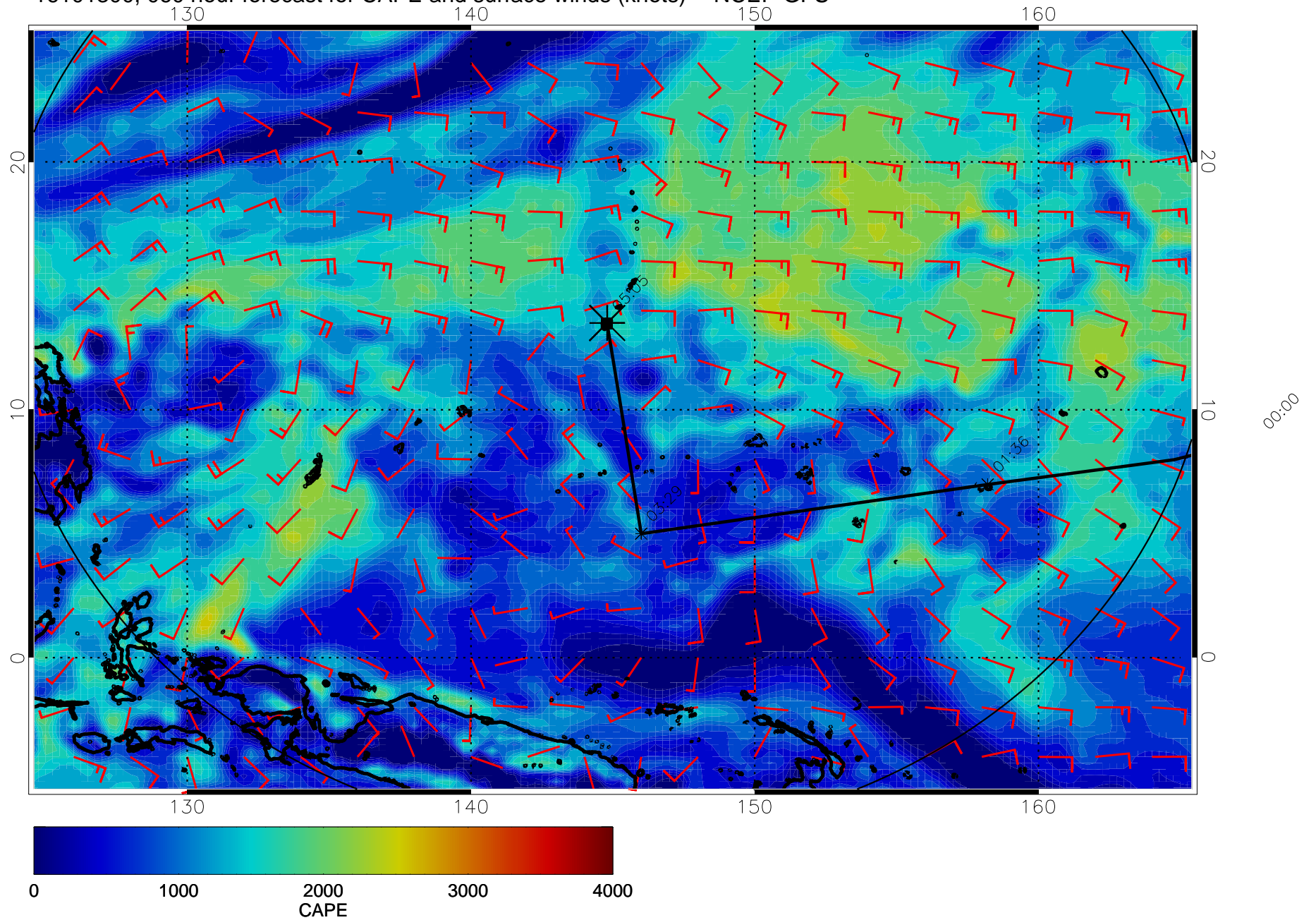


16101218, 054 hour forecast for CAPE and surface winds (knots) -- NCEP GFS



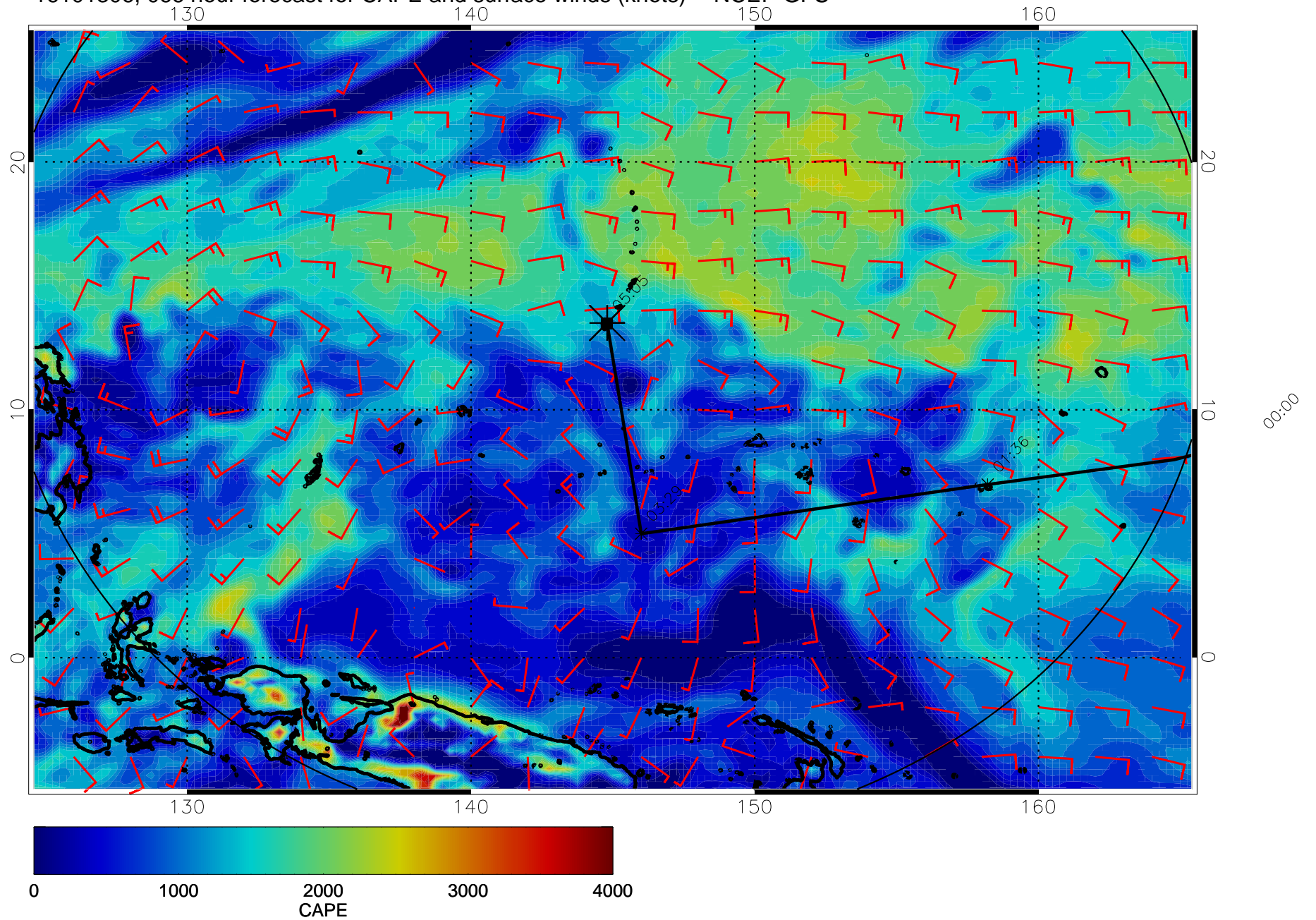


16101300, 060 hour forecast for CAPE and surface winds (knots) -- NCEP GFS

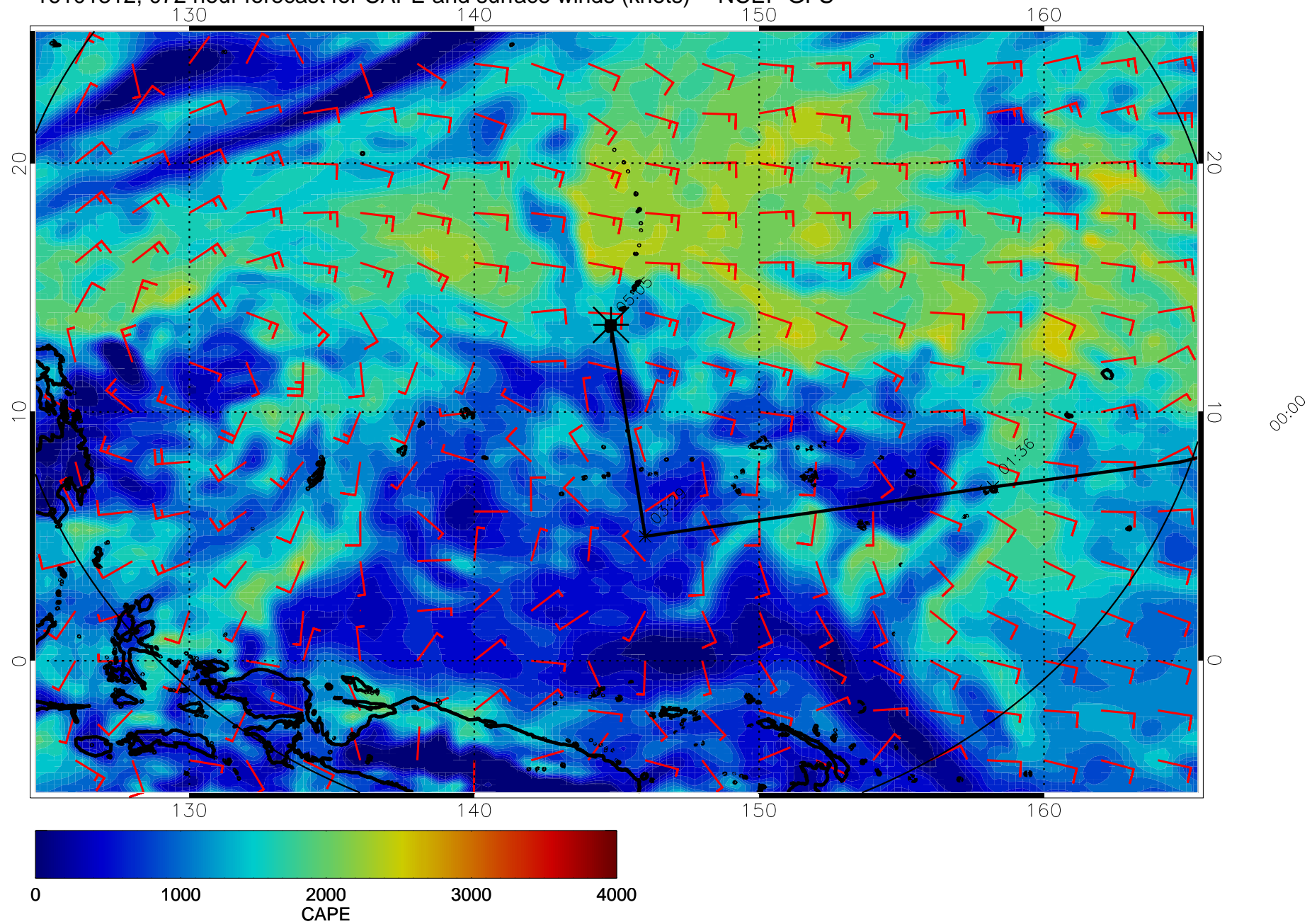




16101306, 066 hour forecast for CAPE and surface winds (knots) -- NCEP GFS

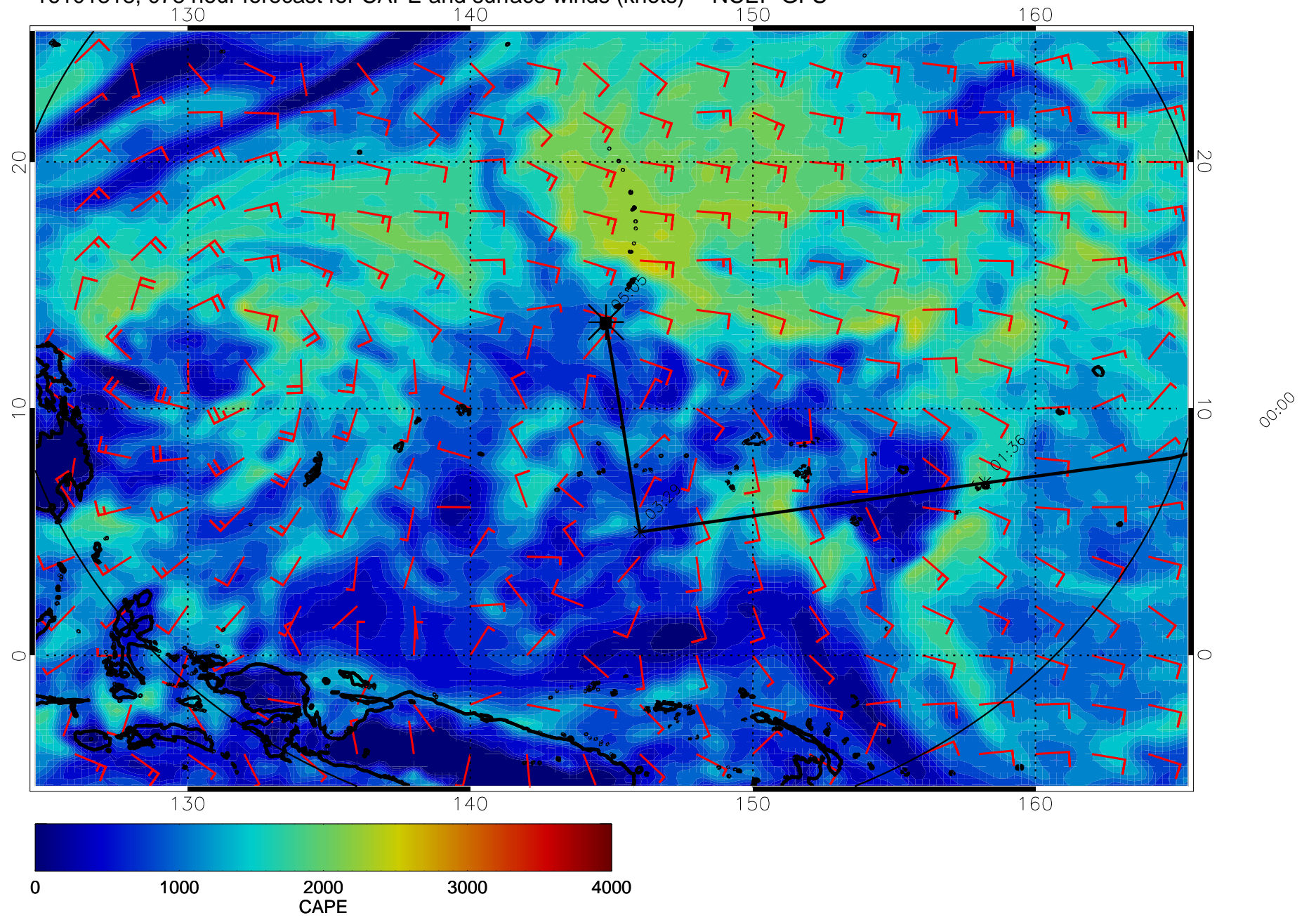


16101312, 072 hour forecast for CAPE and surface winds (knots) -- NCEP GFS



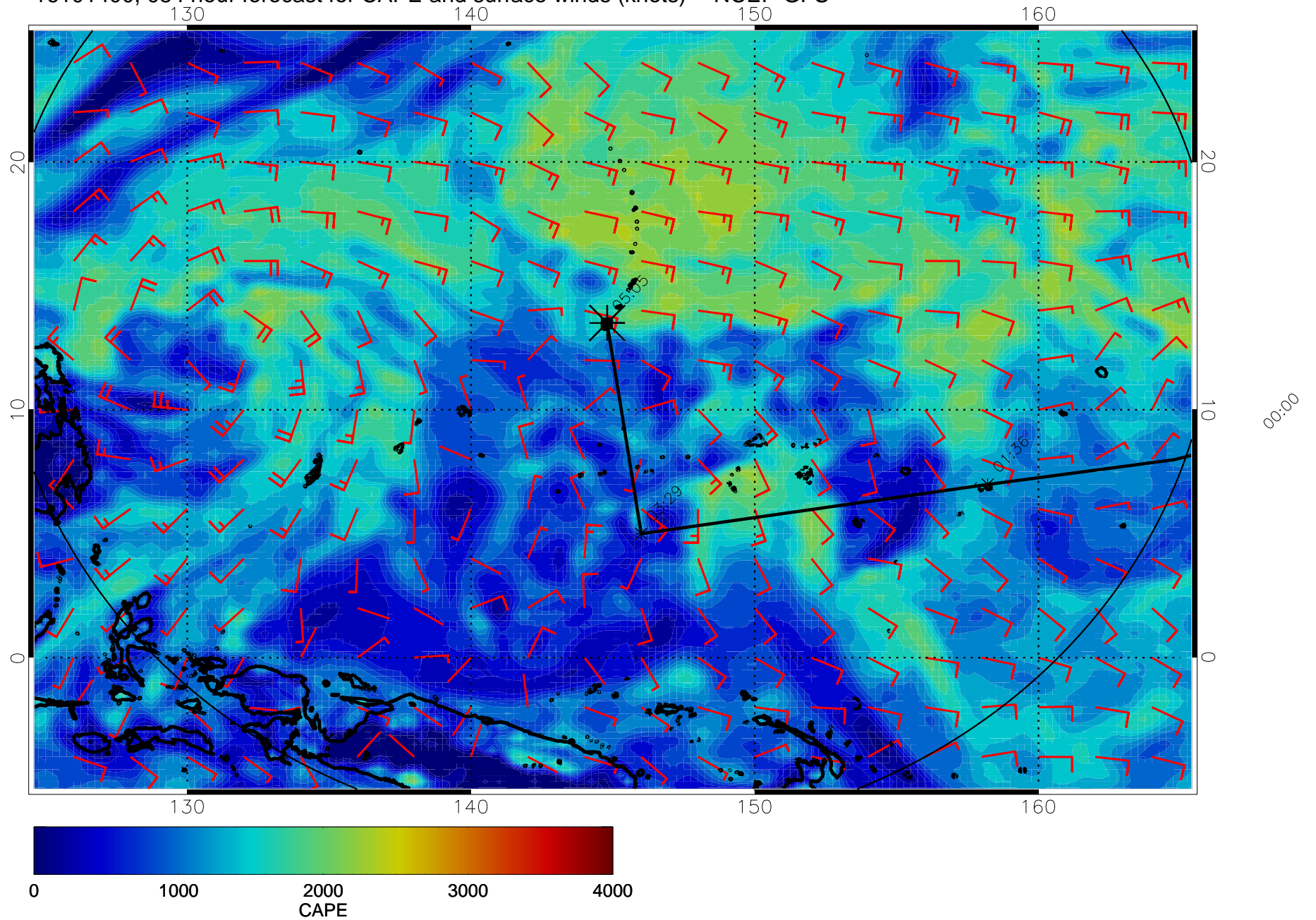


16101318, 078 hour forecast for CAPE and surface winds (knots) -- NCEP GFS

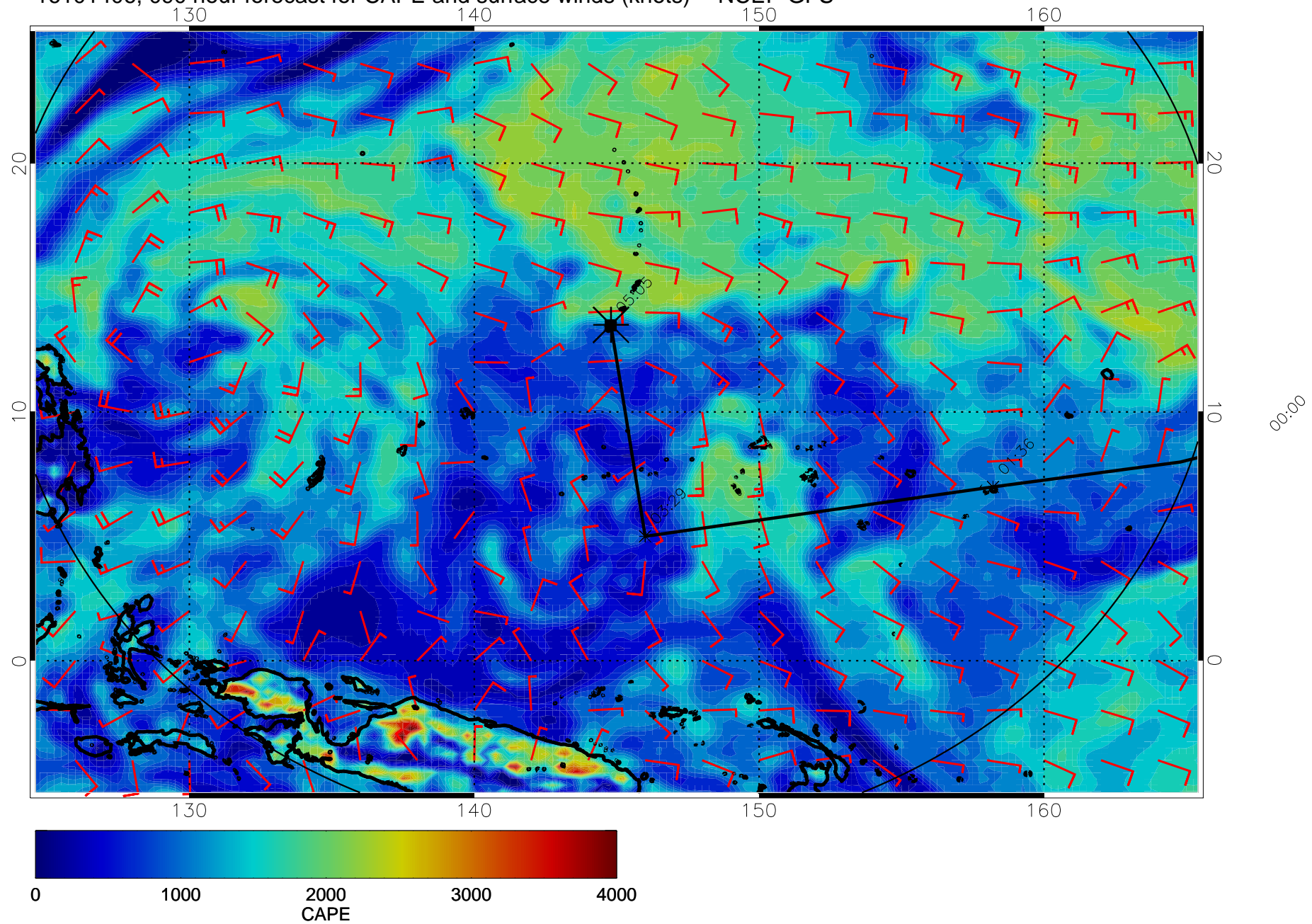




16101400, 084 hour forecast for CAPE and surface winds (knots) -- NCEP GFS

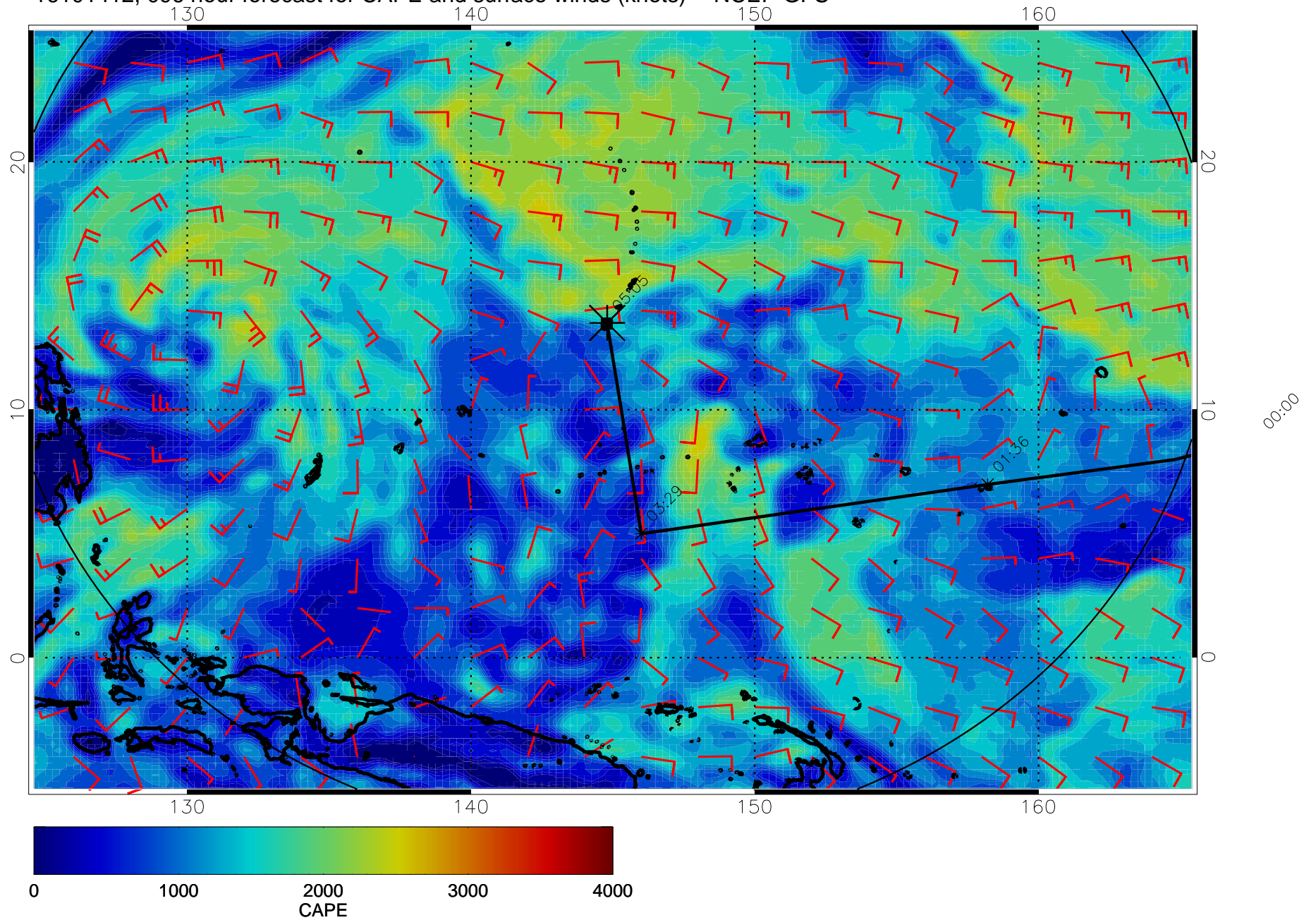


16101406, 090 hour forecast for CAPE and surface winds (knots) -- NCEP GFS



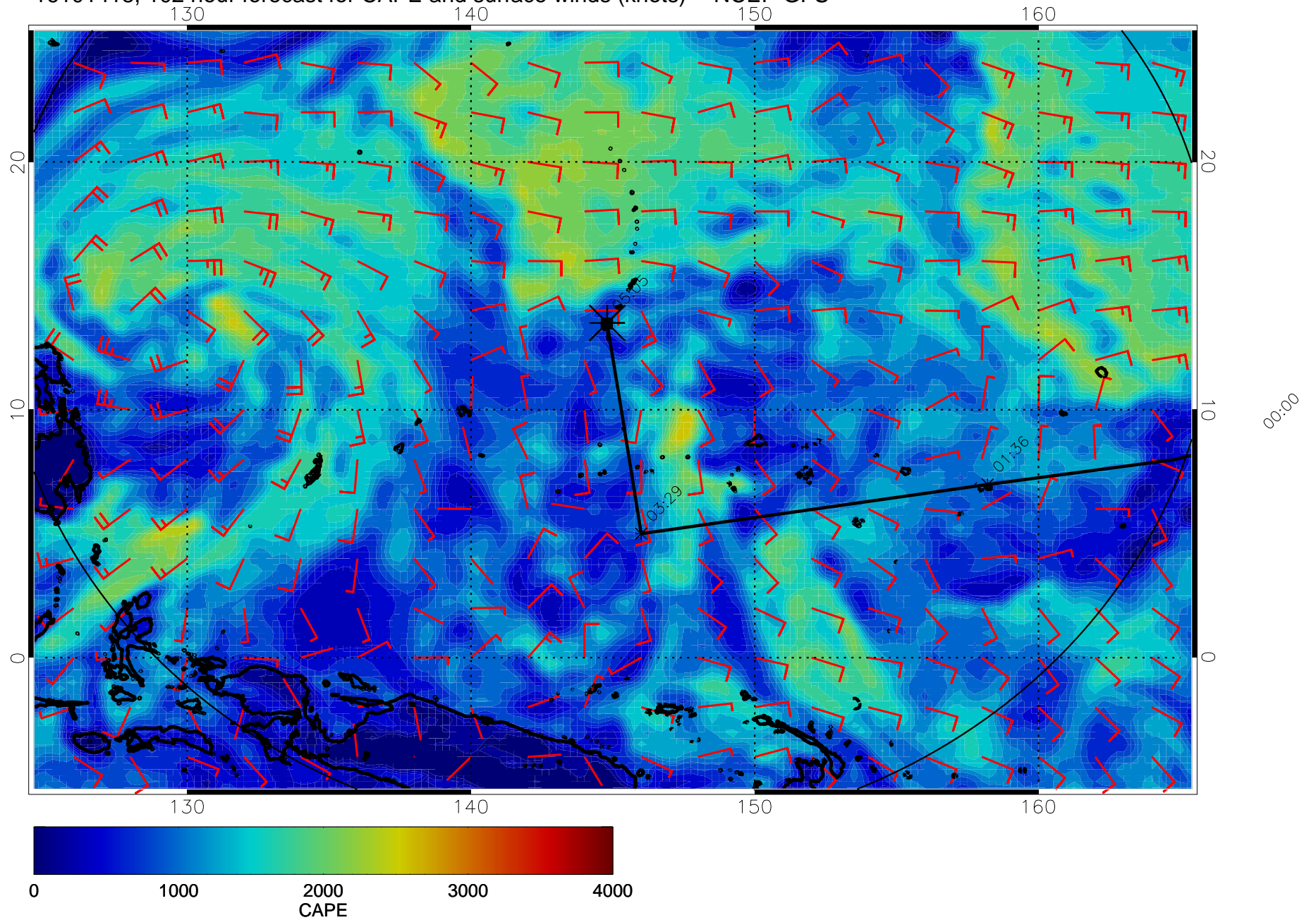


16101412, 096 hour forecast for CAPE and surface winds (knots) -- NCEP GFS

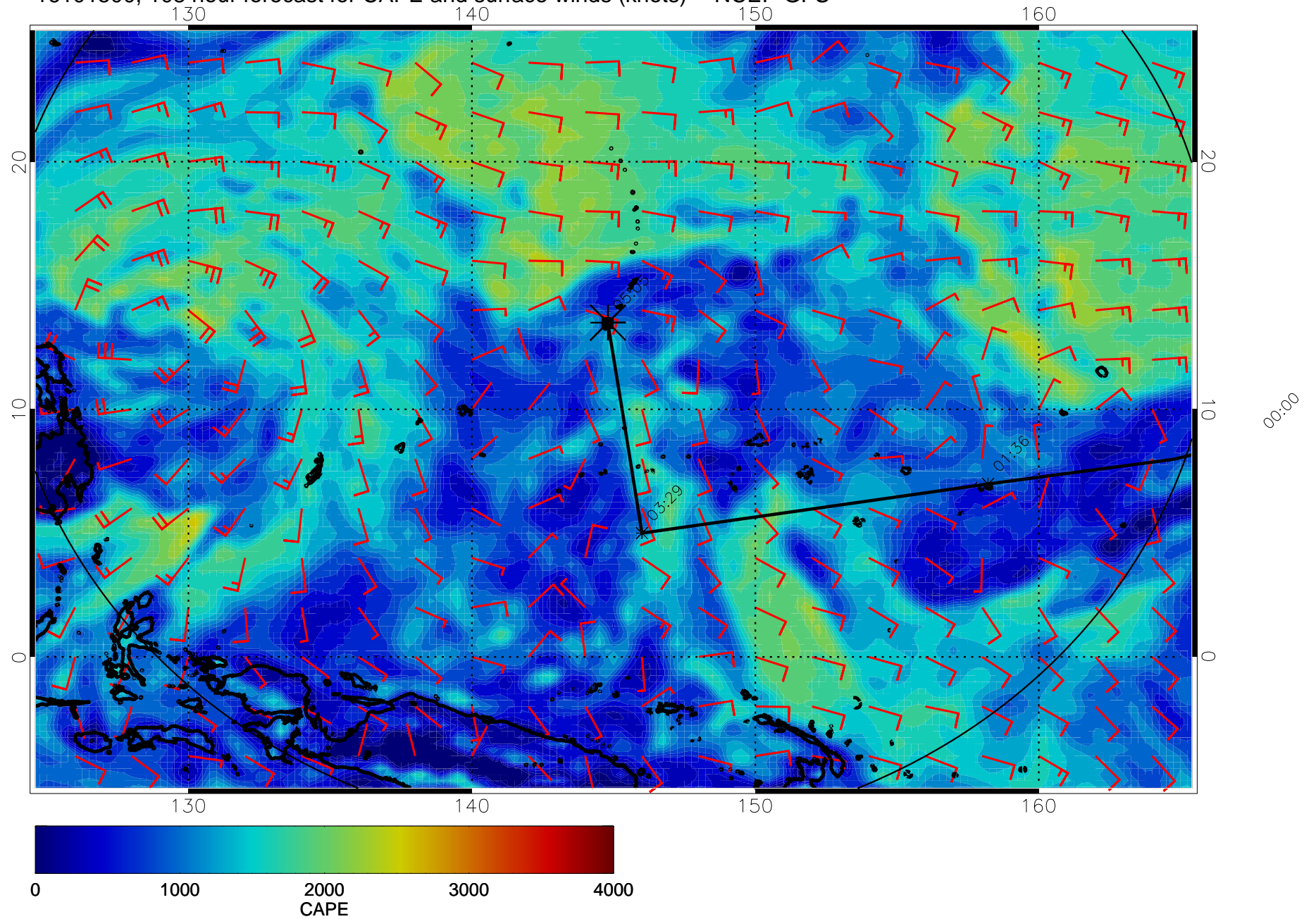




16101418, 102 hour forecast for CAPE and surface winds (knots) -- NCEP GFS

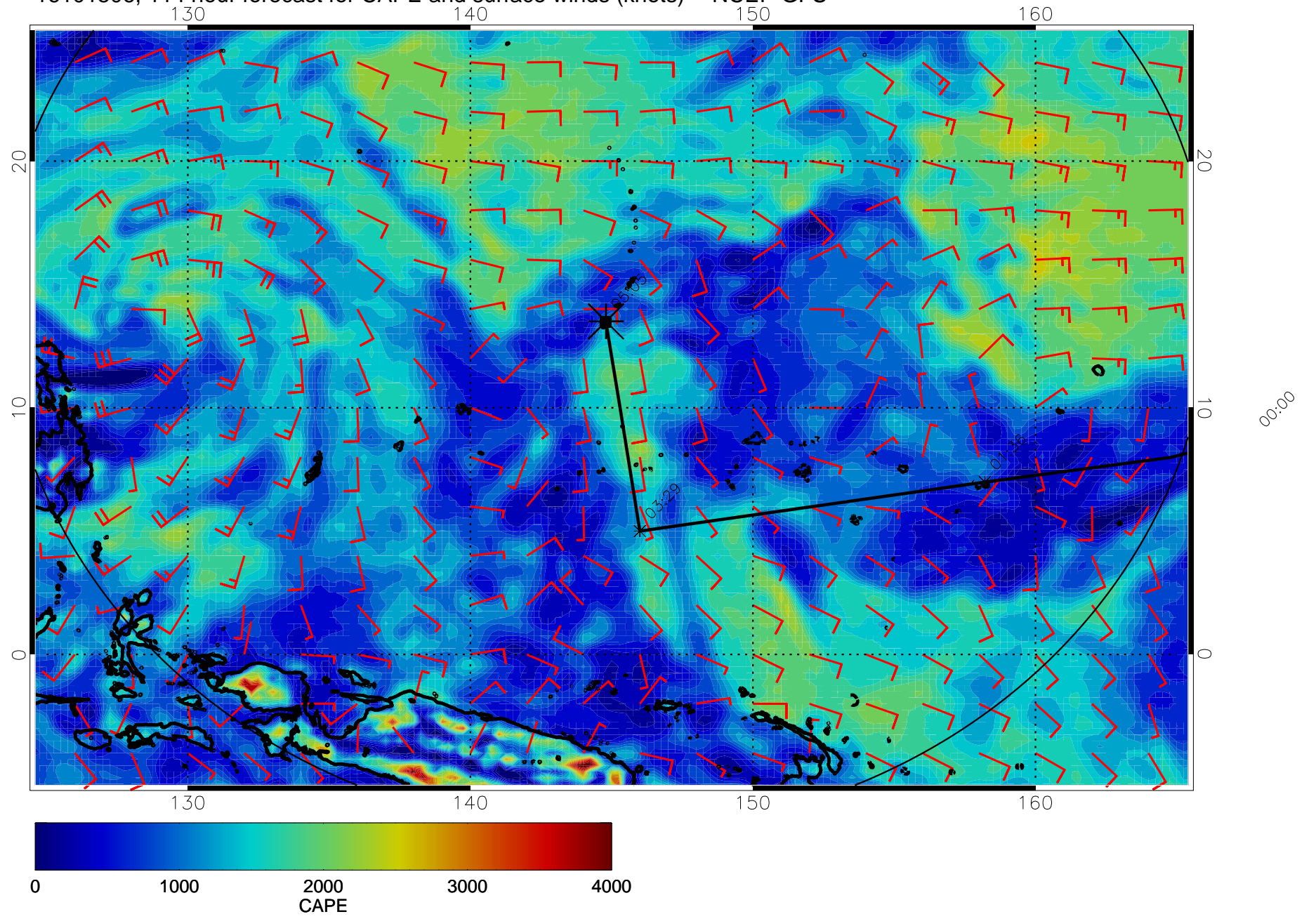


16101500, 108 hour forecast for CAPE and surface winds (knots) -- NCEP GFS





16101506, 114 hour forecast for CAPE and surface winds (knots) -- NCEP GFS



16101512, 120 hour forecast for CAPE and surface winds (knots) -- NCEP GFS

