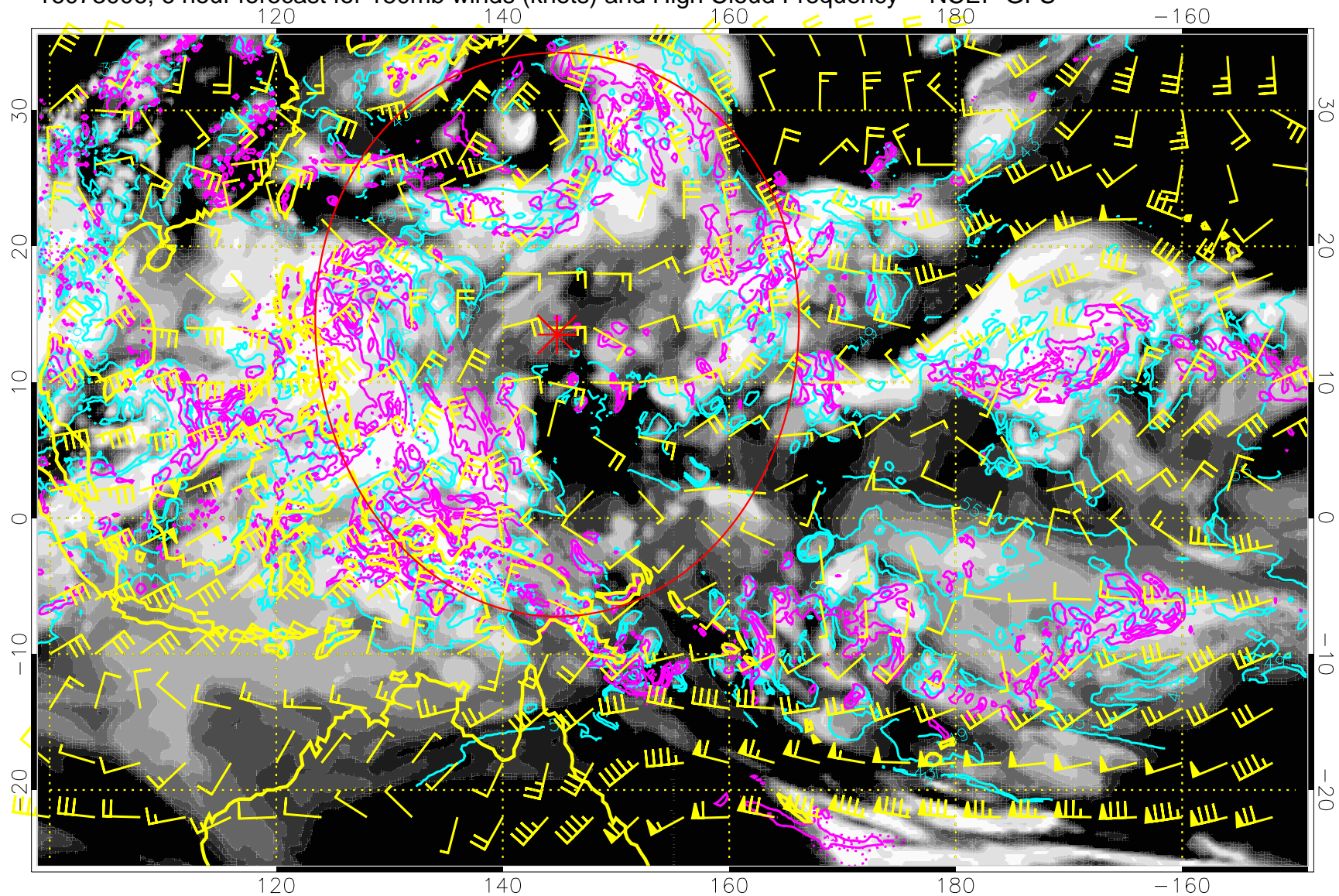


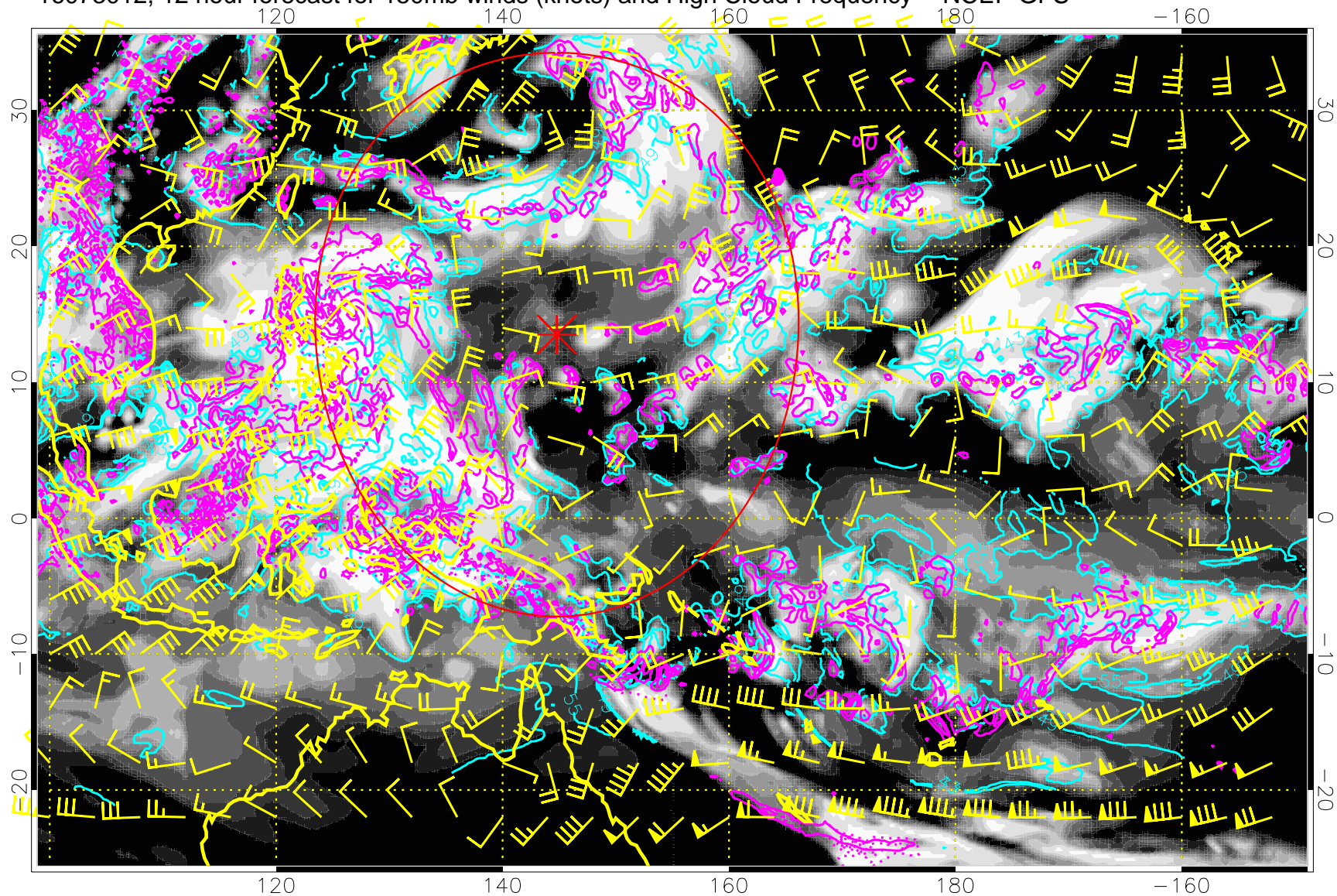
16073006, 6 hour forecast for 150mb winds (knots) and High Cloud Frequency -- NCEP GFS



High Cloud Altitude from 37 kft at 6 kft intervals
Precip (tot dot, conv sol) mm/day 40 mm/day contours, min 20

Range ring of 2304 km

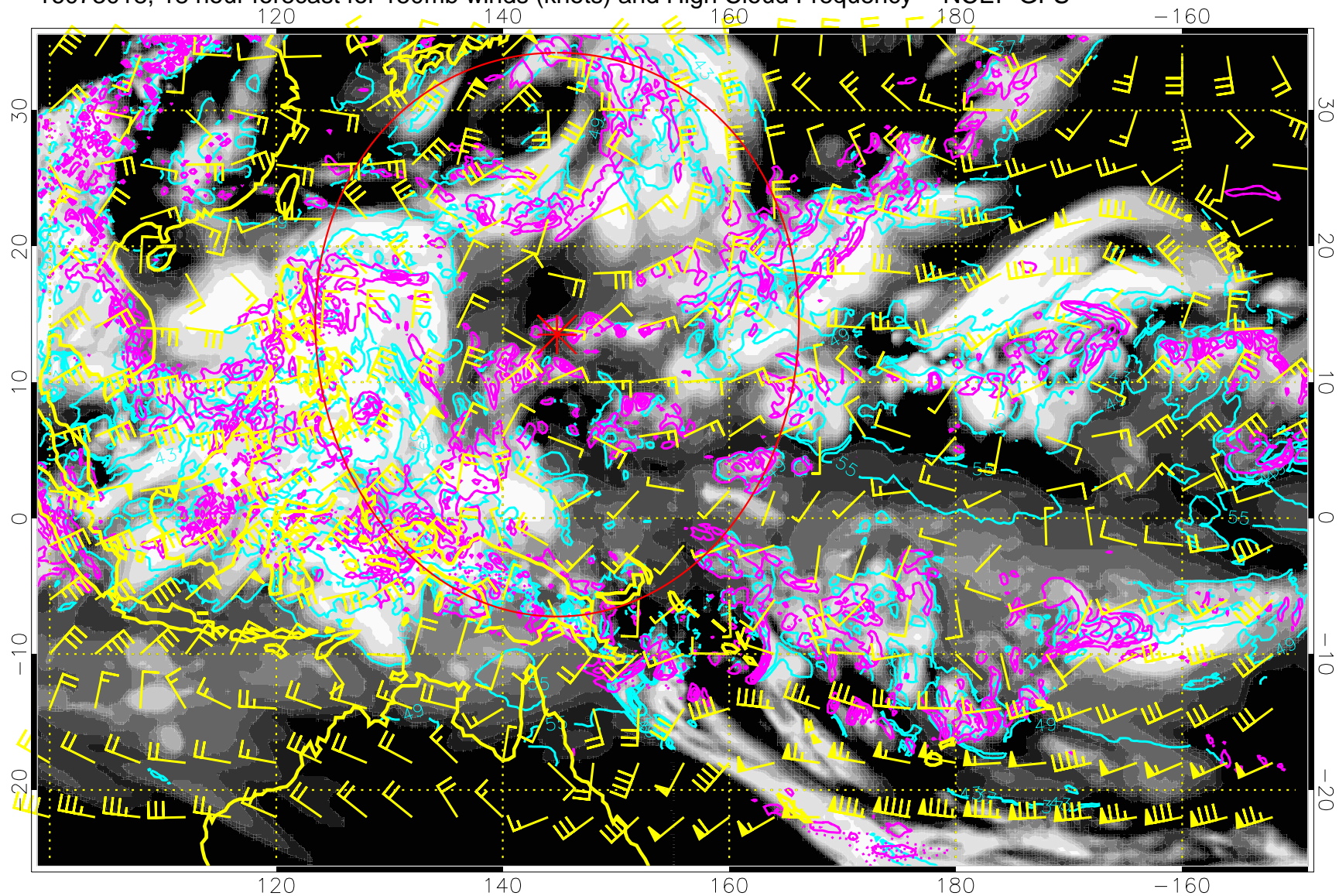
16073012, 12 hour forecast for 150mb winds (knots) and High Cloud Frequency -- NCEP GFS



High Cloud Altitude from 37 kft at 6 kft intervals
Precip (tot dot, conv sol) mm/day 40 mm/day contours, min 20

Range ring of 2304 km

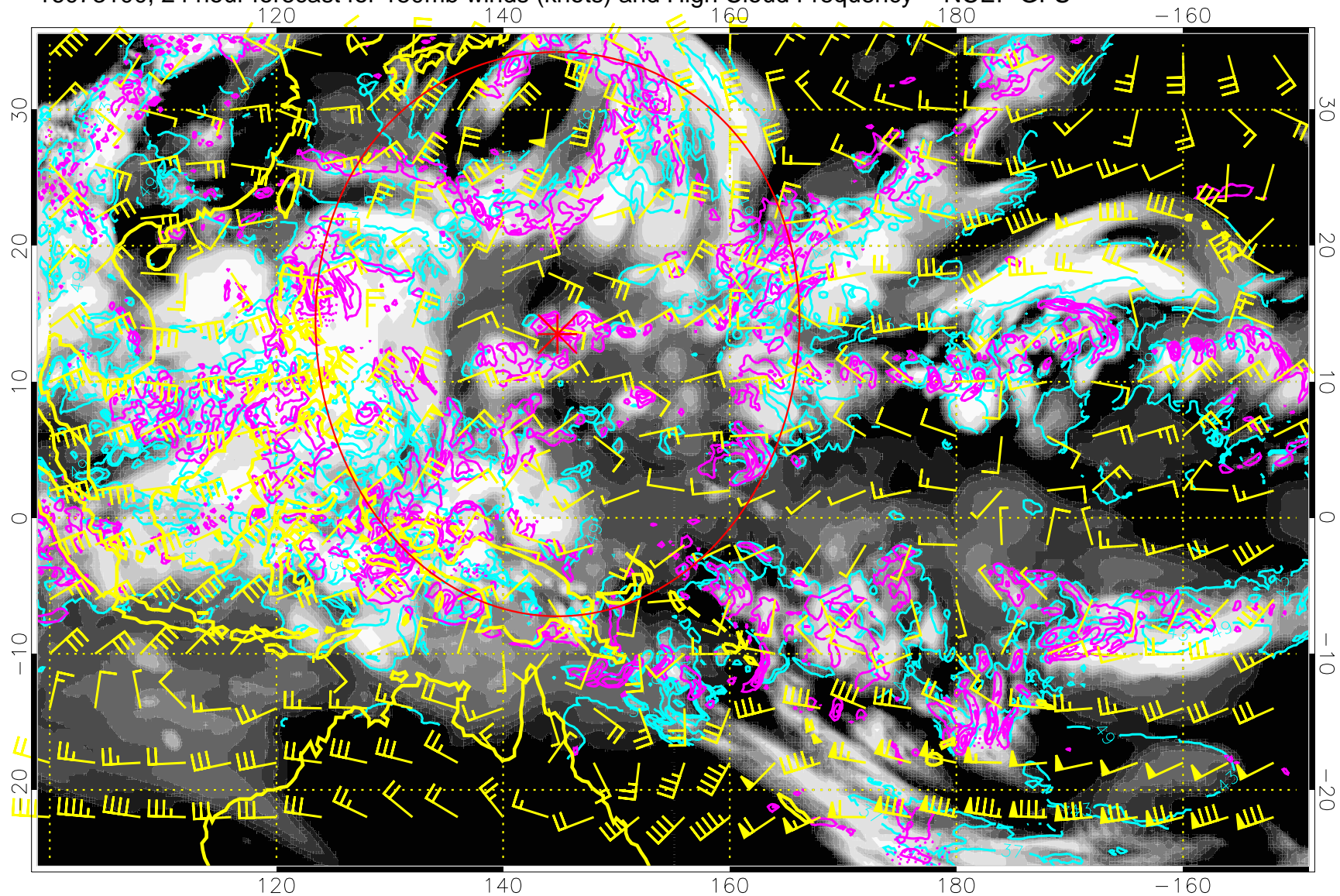
16073018, 18 hour forecast for 150mb winds (knots) and High Cloud Frequency -- NCEP GFS



High Cloud Altitude from 37 kft at 6 kft intervals
Precip (tot dot, conv sol) mm/day 40 mm/day contours, min 20

Range ring of 2304 km

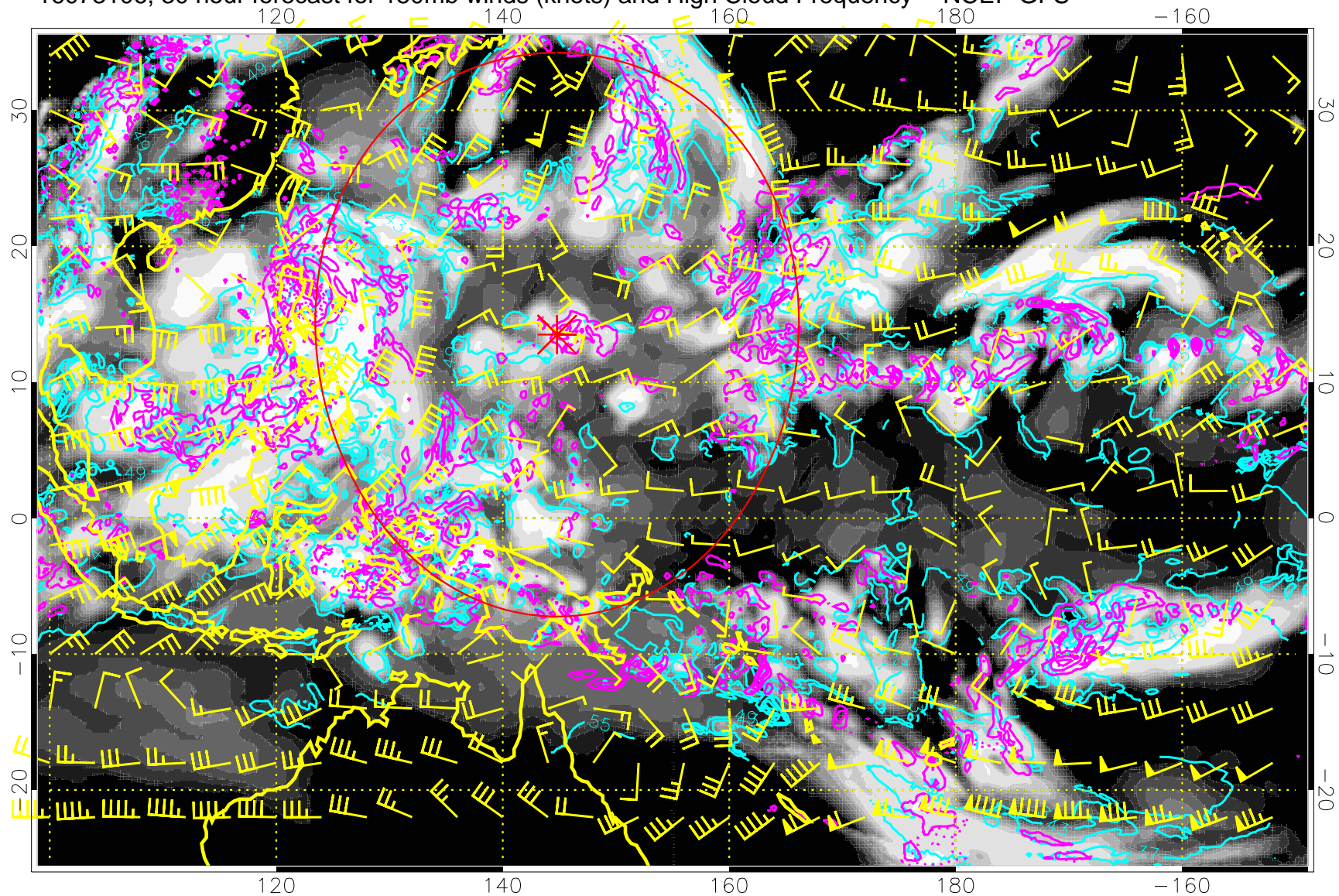
16073100, 24 hour forecast for 150mb winds (knots) and High Cloud Frequency -- NCEP GFS



High Cloud Altitude from 37 kft at 6 kft intervals
Precip (tot dot, conv sol) mm/day 40 mm/day contours, min 20

Range ring of 2304 km

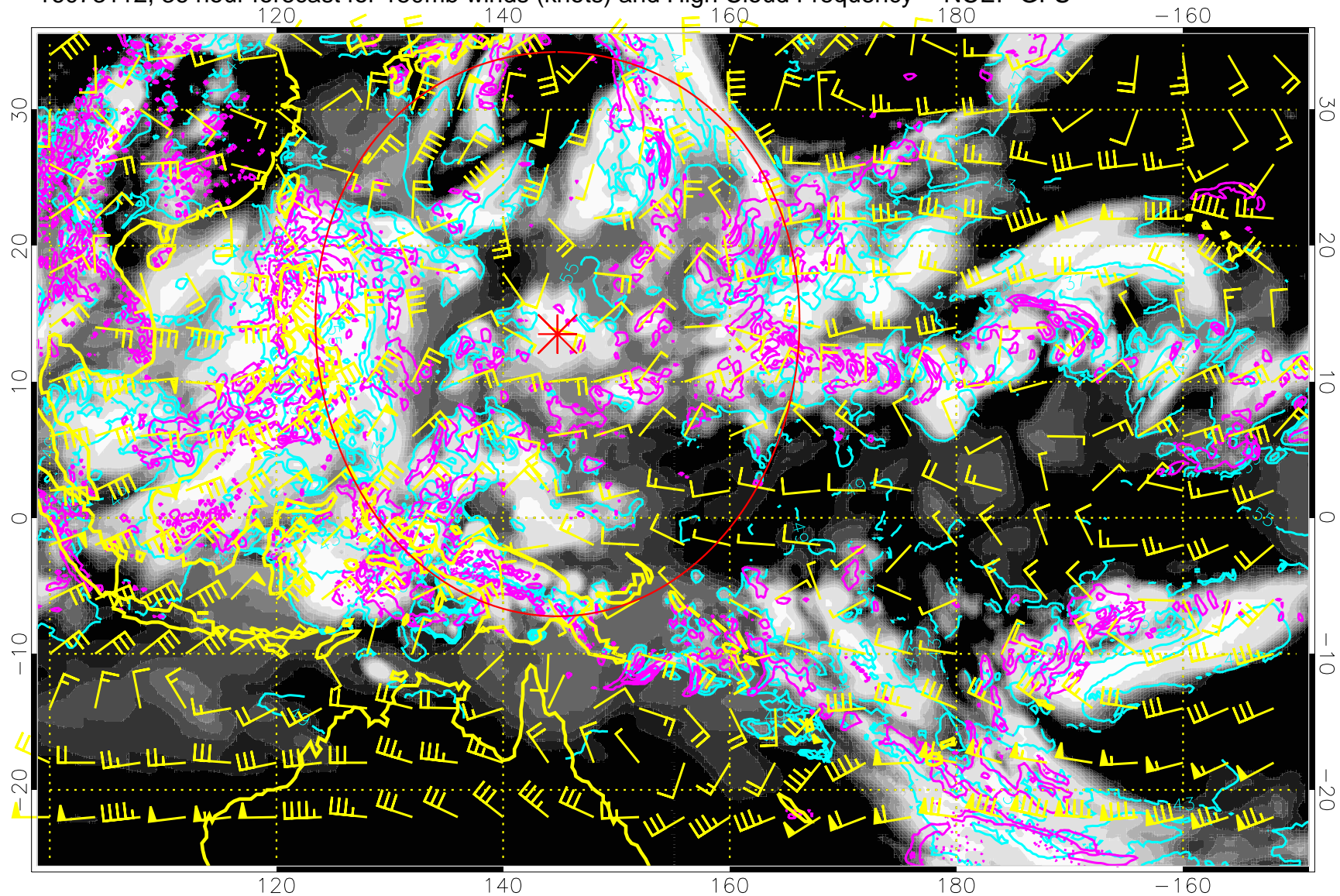
16073106, 30 hour forecast for 150mb winds (knots) and High Cloud Frequency -- NCEP GFS



High Cloud Altitude from 37 kft at 6 kft intervals
Precip (tot dot, conv sol) mm/day 40 mm/day contours, min 20

Range ring of 2304 km

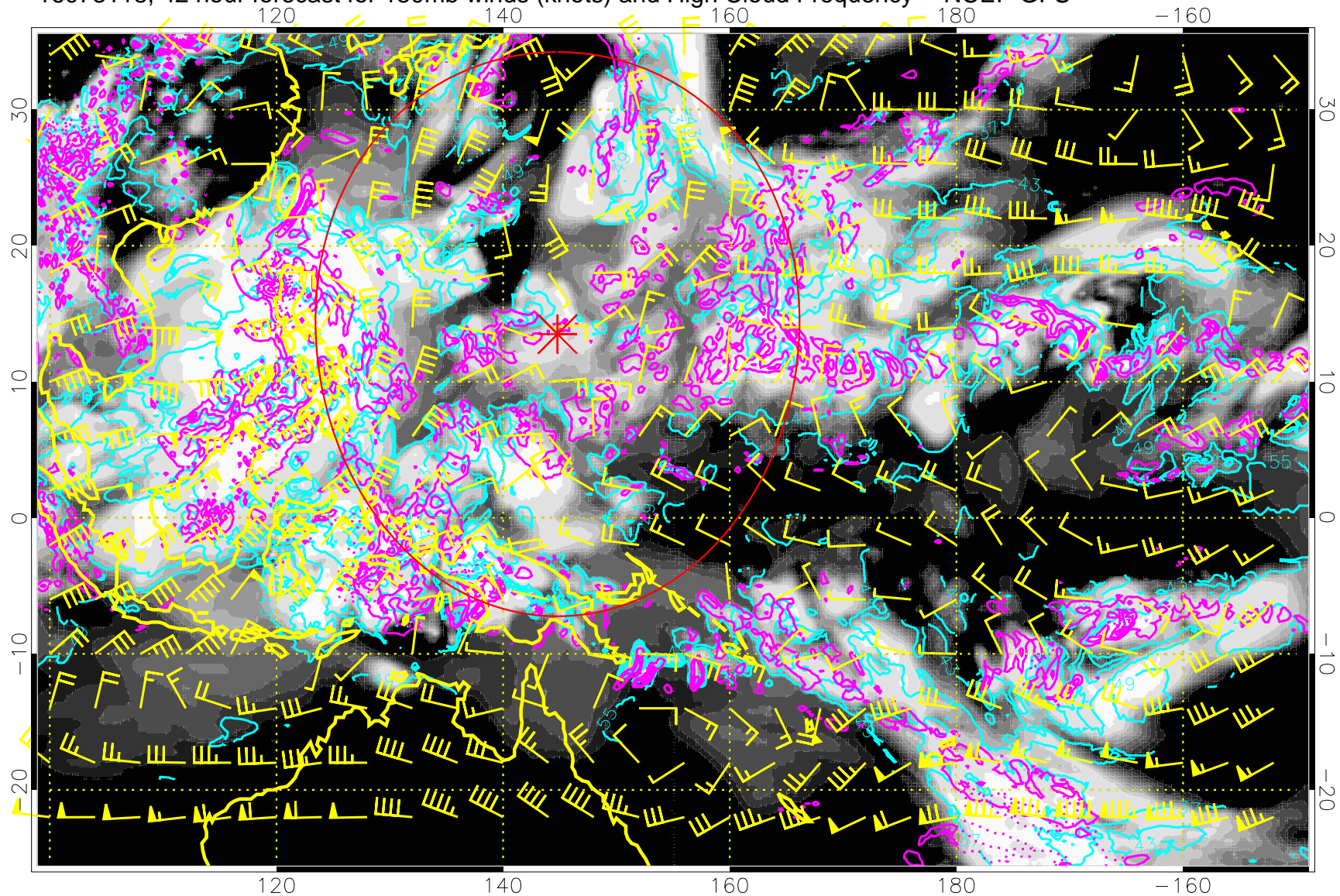
16073112, 36 hour forecast for 150mb winds (knots) and High Cloud Frequency -- NCEP GFS



High Cloud Altitude from 37 kft at 6 kft intervals
Precip (tot dot, conv sol) mm/day 40 mm/day contours, min 20

Range ring of 2304 km

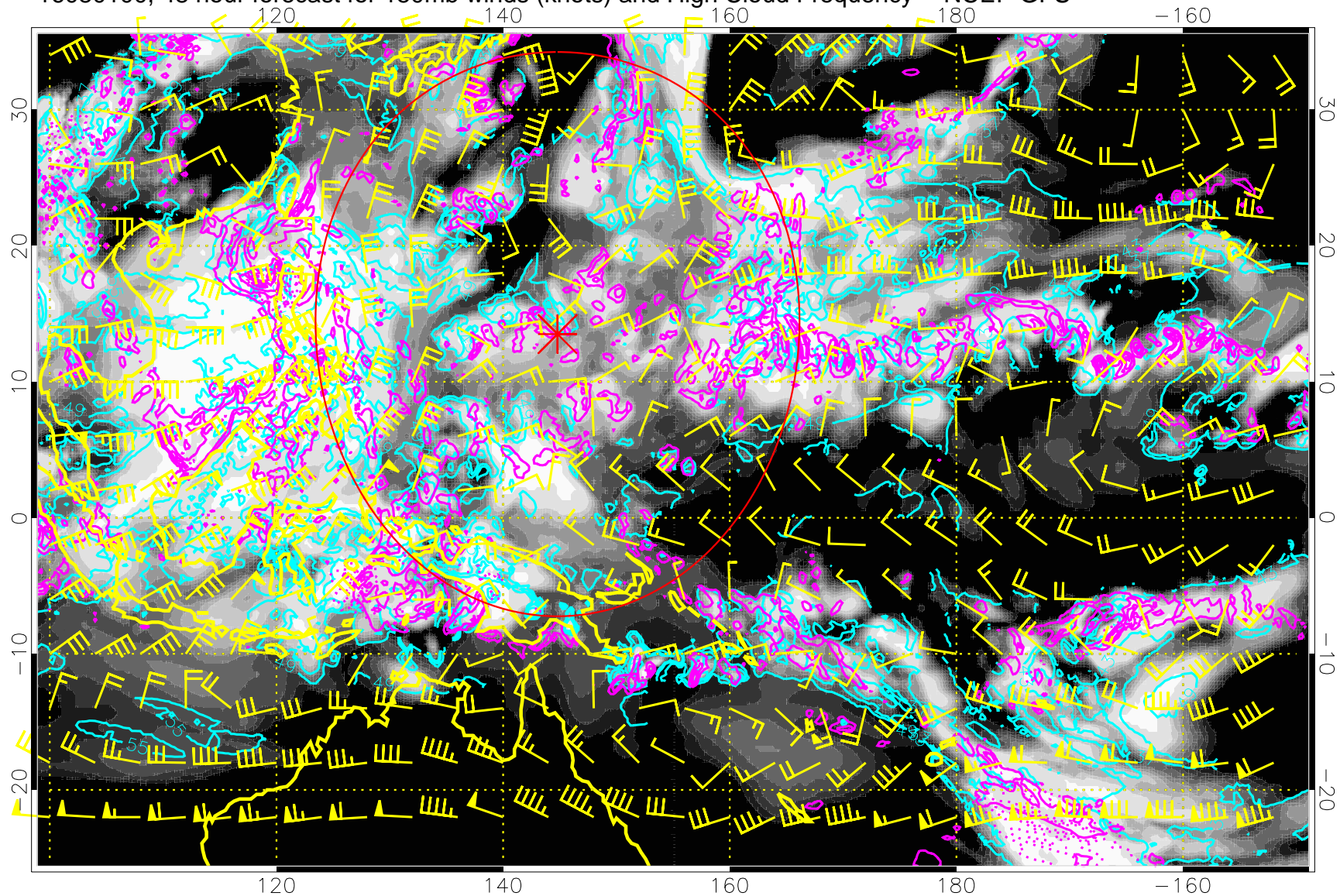
16073118, 42 hour forecast for 150mb winds (knots) and High Cloud Frequency -- NCEP GFS



High Cloud Altitude from 37 kft at 6 kft intervals
Precip (tot dot, conv sol) mm/day 40 mm/day contours, min 20

Range ring of 2304 km

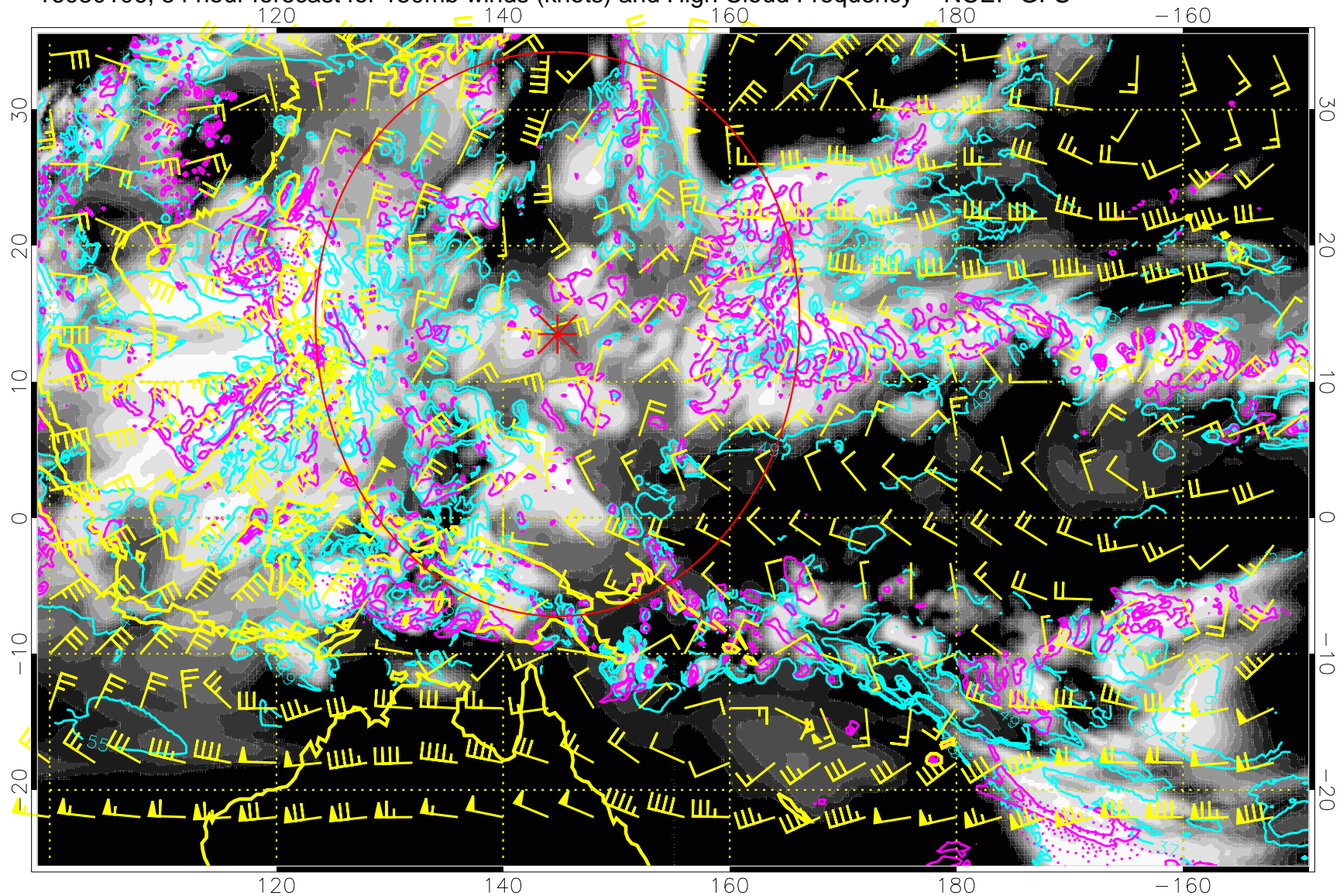
16080100, 48 hour forecast for 150mb winds (knots) and High Cloud Frequency -- NCEP GFS



High Cloud Altitude from 37 kft at 6 kft intervals
Precip (tot dot, conv sol) mm/day 40 mm/day contours, min 20

Range ring of 2304 km

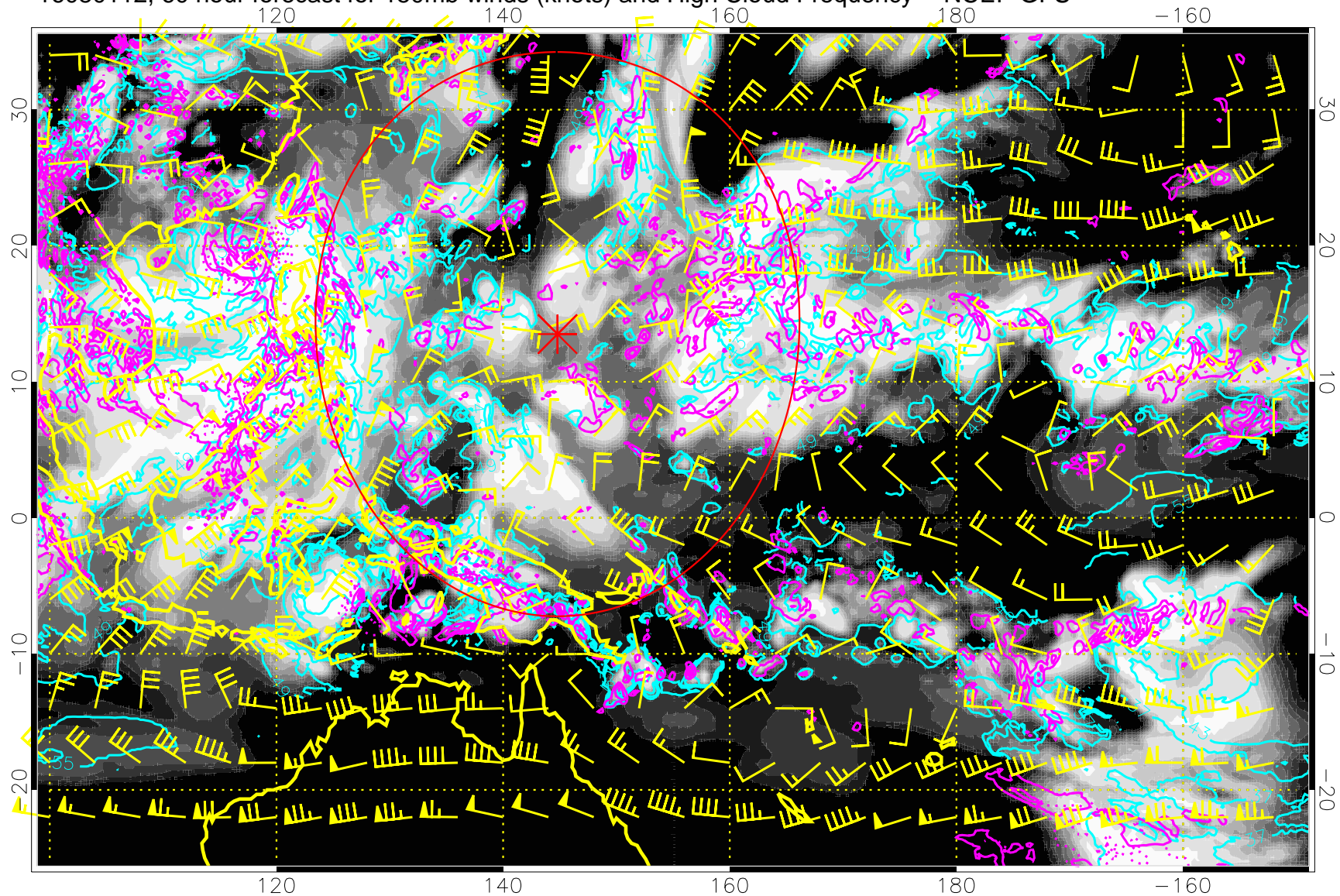
16080106, 54 hour forecast for 150mb winds (knots) and High Cloud Frequency -- NCEP GFS



High Cloud Altitude from 37 kft at 6 kft intervals
Precip (tot dot, conv sol) mm/day 40 mm/day contours, min 20

Range ring of 2304 km

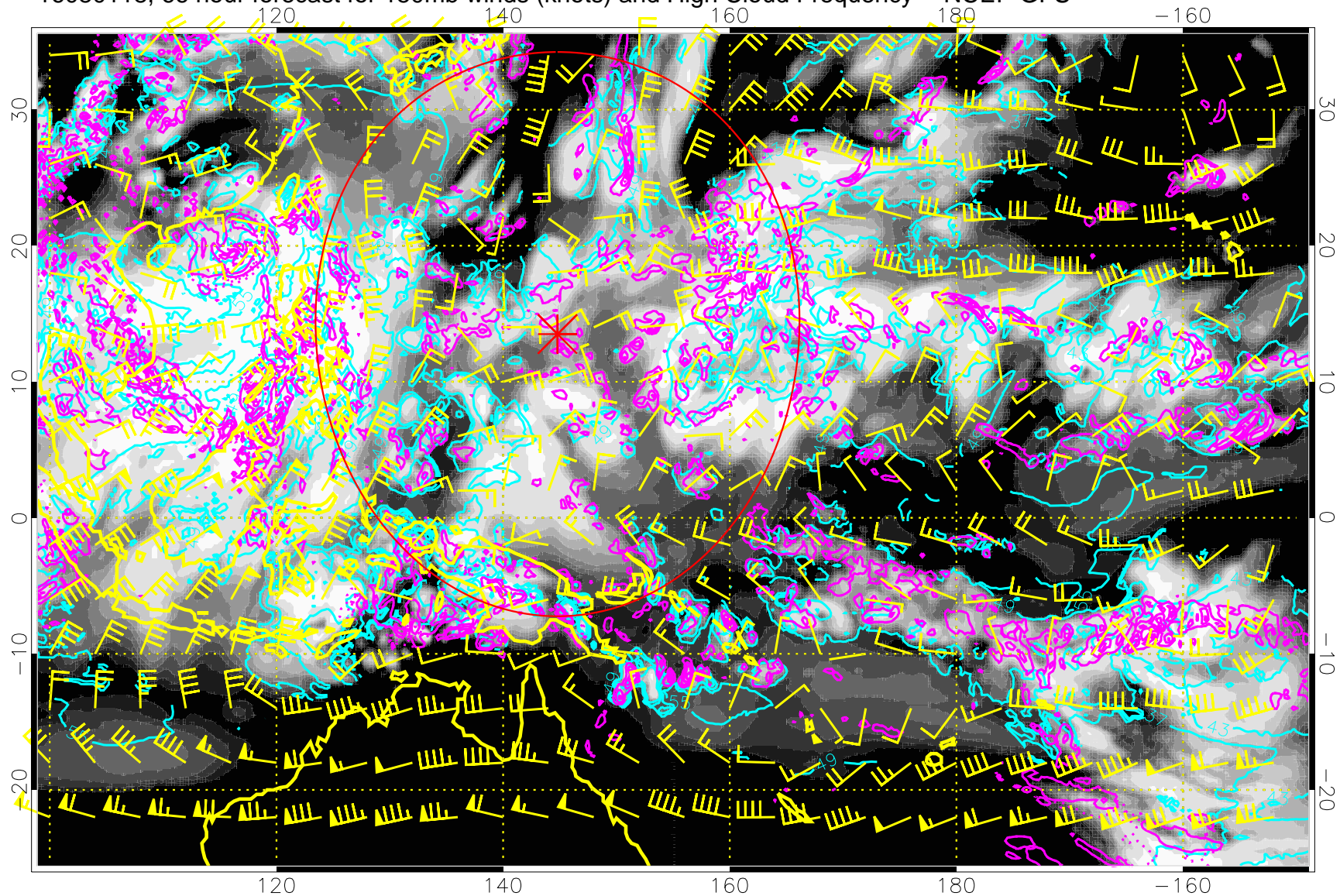
16080112, 60 hour forecast for 150mb winds (knots) and High Cloud Frequency -- NCEP GFS



High Cloud Altitude from 37 kft at 6 kft intervals
Precip (tot dot, conv sol) mm/day 40 mm/day contours, min 20

Range ring of 2304 km

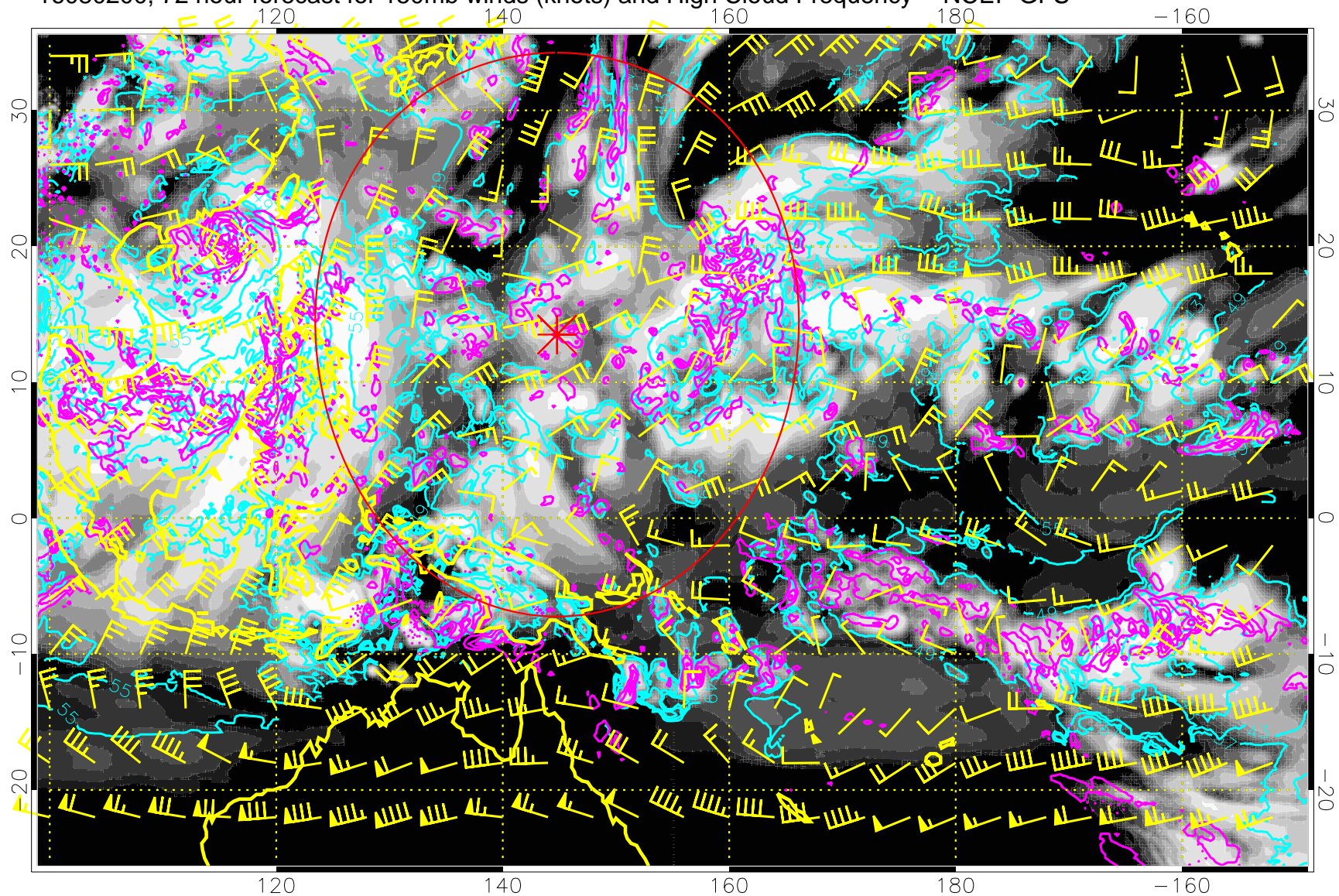
16080118, 66 hour forecast for 150mb winds (knots) and High Cloud Frequency -- NCEP GFS



High Cloud Altitude from 37 kft at 6 kft intervals
Precip (tot dot, conv sol) mm/day 40 mm/day contours, min 20

Range ring of 2304 km

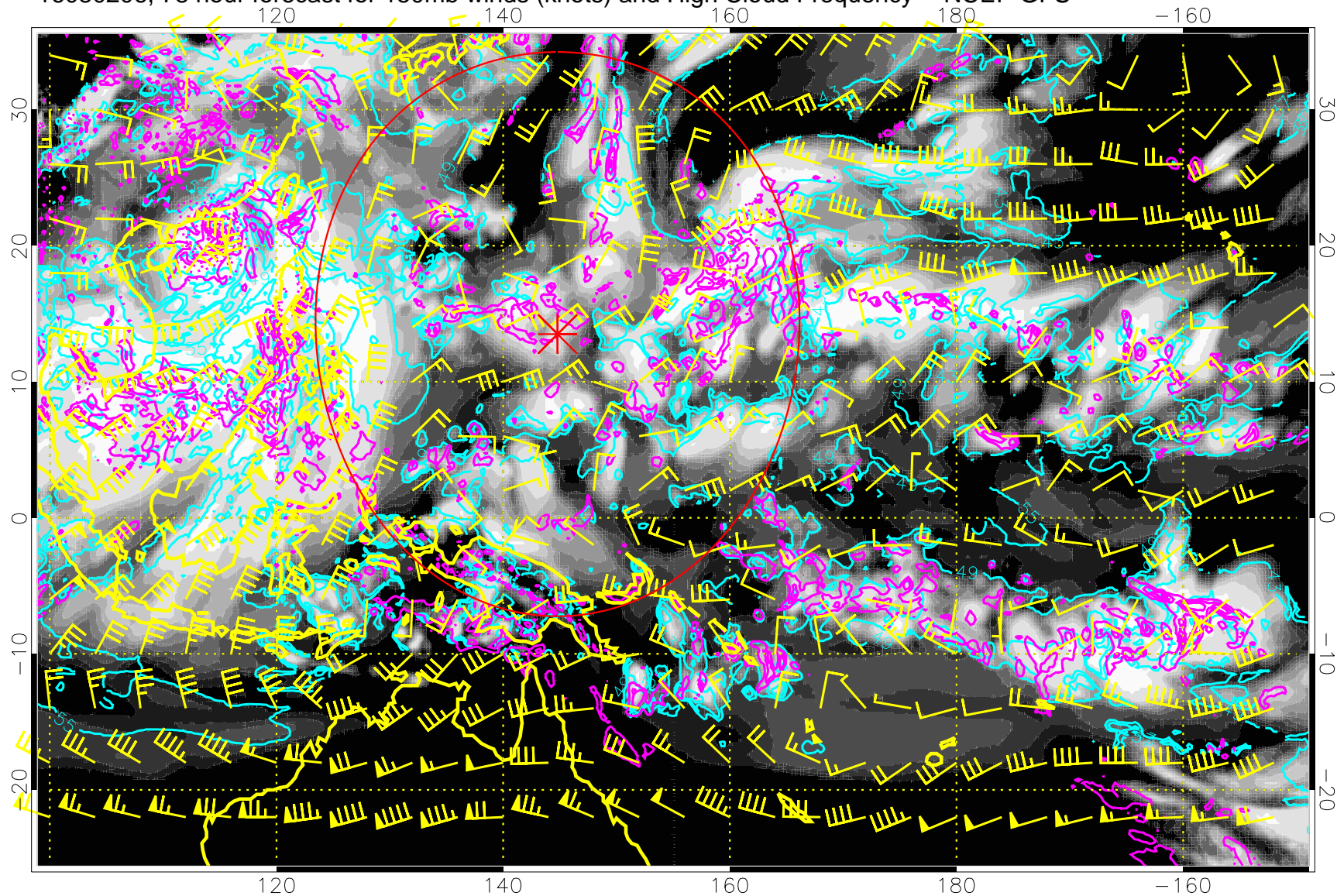
16080200, 72 hour forecast for 150mb winds (knots) and High Cloud Frequency -- NCEP GFS



High Cloud Altitude from 37 kft at 6 kft intervals
Precip (tot dot, conv sol) mm/day 40 mm/day contours, min 20

Range ring of 2304 km

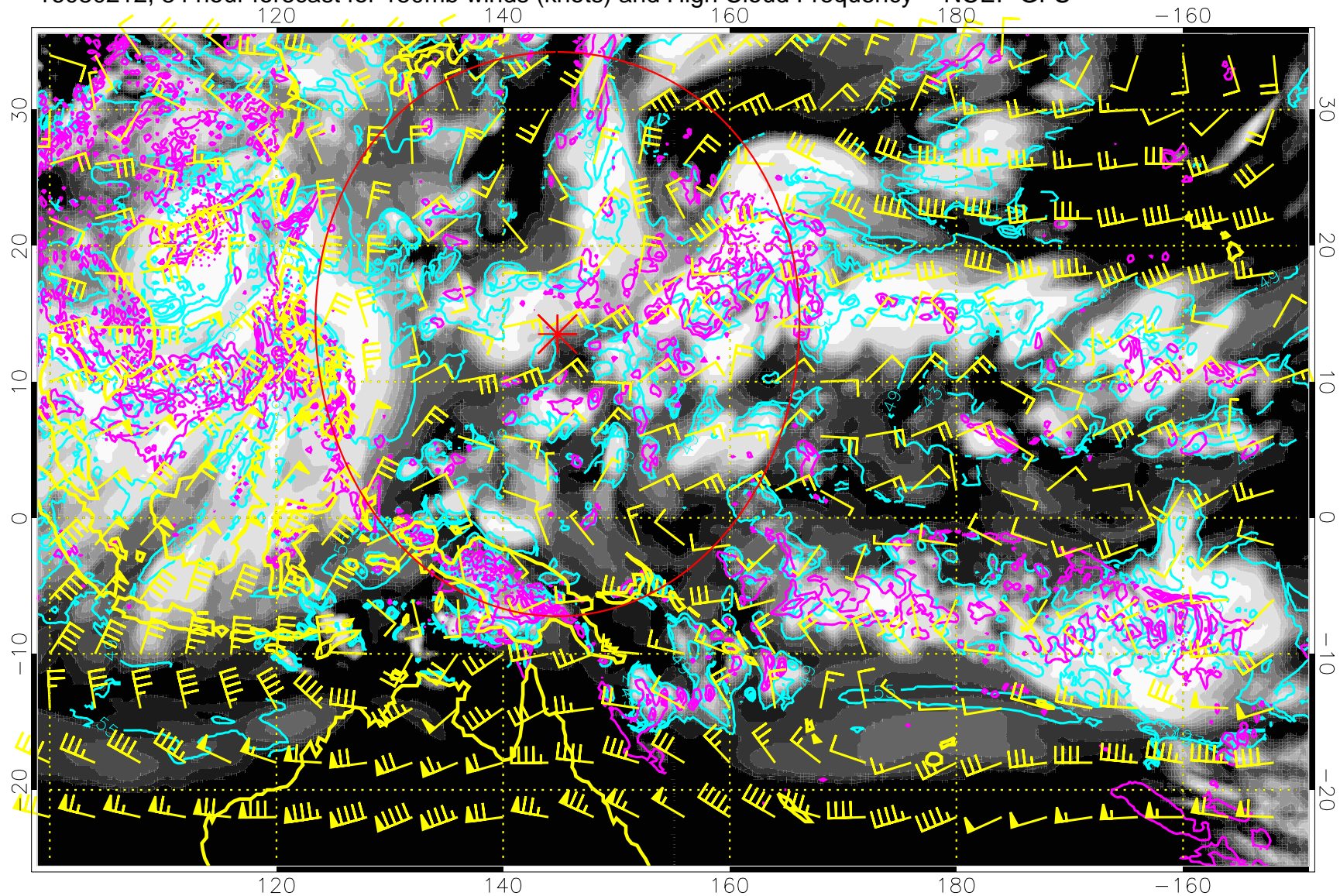
16080206, 78 hour forecast for 150mb winds (knots) and High Cloud Frequency -- NCEP GFS



High Cloud Altitude from 37 kft at 6 kft intervals
Precip (tot dot, conv sol) mm/day 40 mm/day contours, min 20

Range ring of 2304 km

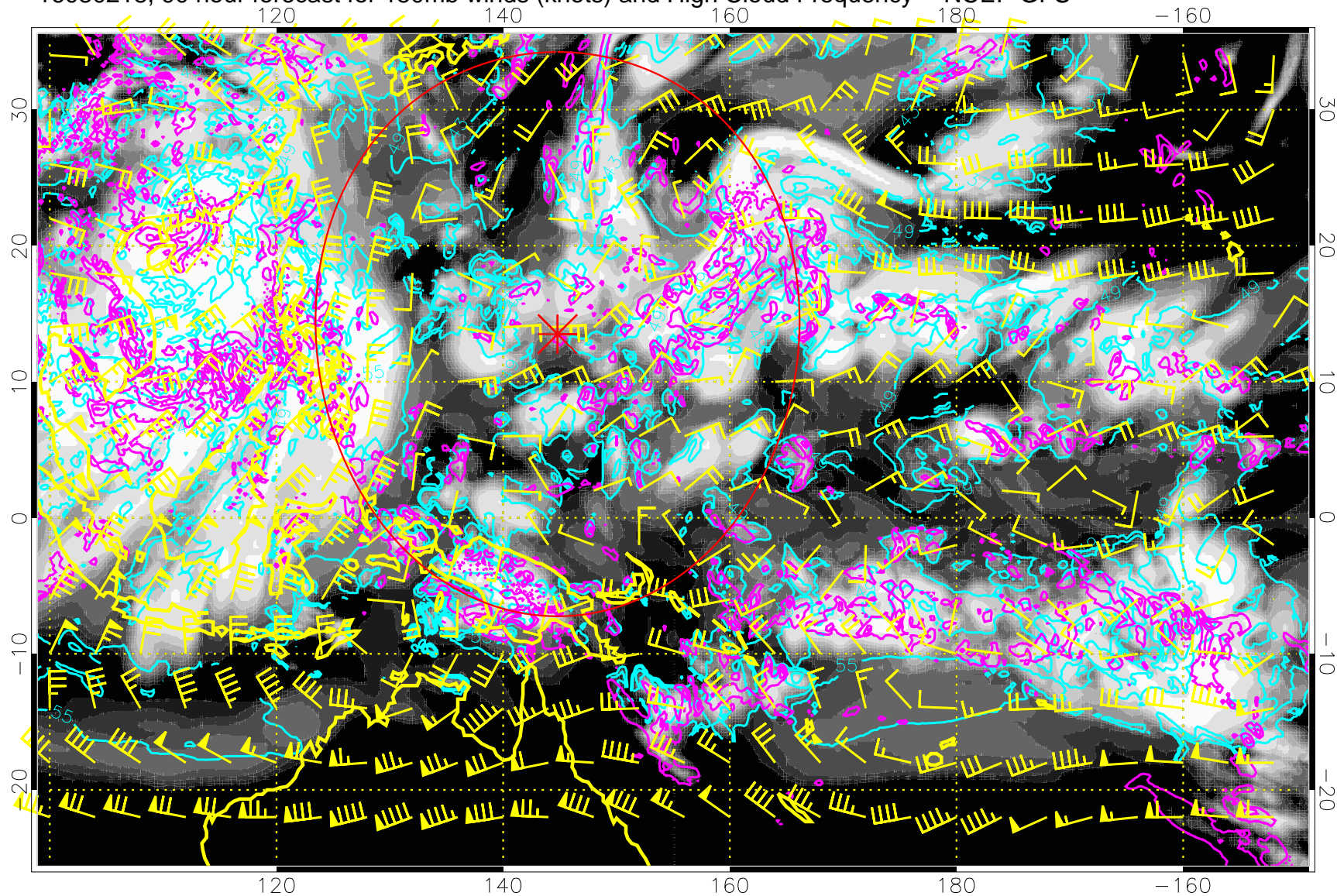
16080212, 84 hour forecast for 150mb winds (knots) and High Cloud Frequency -- NCEP GFS



High Cloud Altitude from 37 kft at 6 kft intervals
Precip (tot dot, conv sol) mm/day 40 mm/day contours, min 20

Range ring of 2304 km

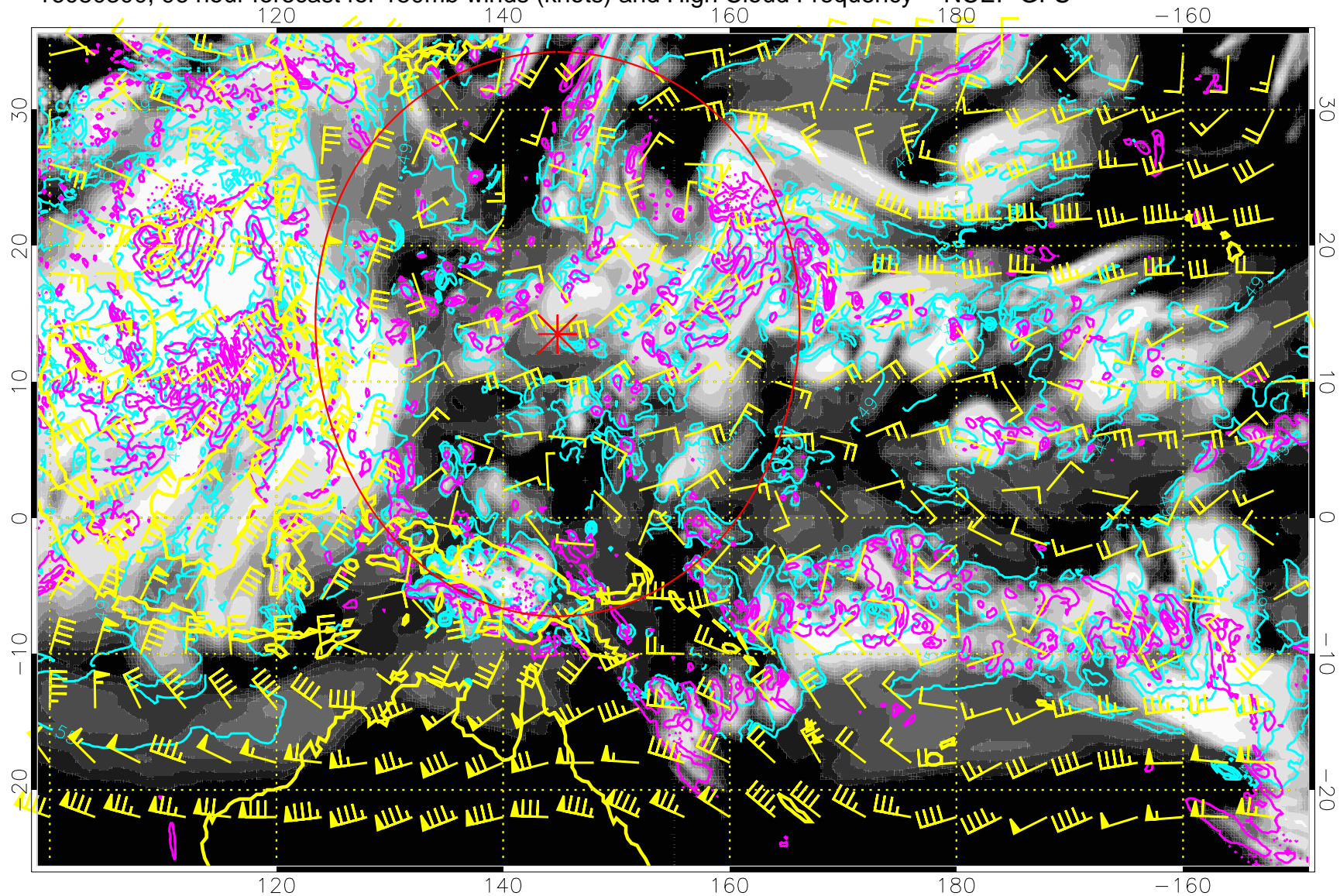
16080218, 90 hour forecast for 150mb winds (knots) and High Cloud Frequency -- NCEP GFS



High Cloud Altitude from 37 kft at 6 kft intervals
Precip (tot dot, conv sol) mm/day 40 mm/day contours, min 20

Range ring of 2304 km

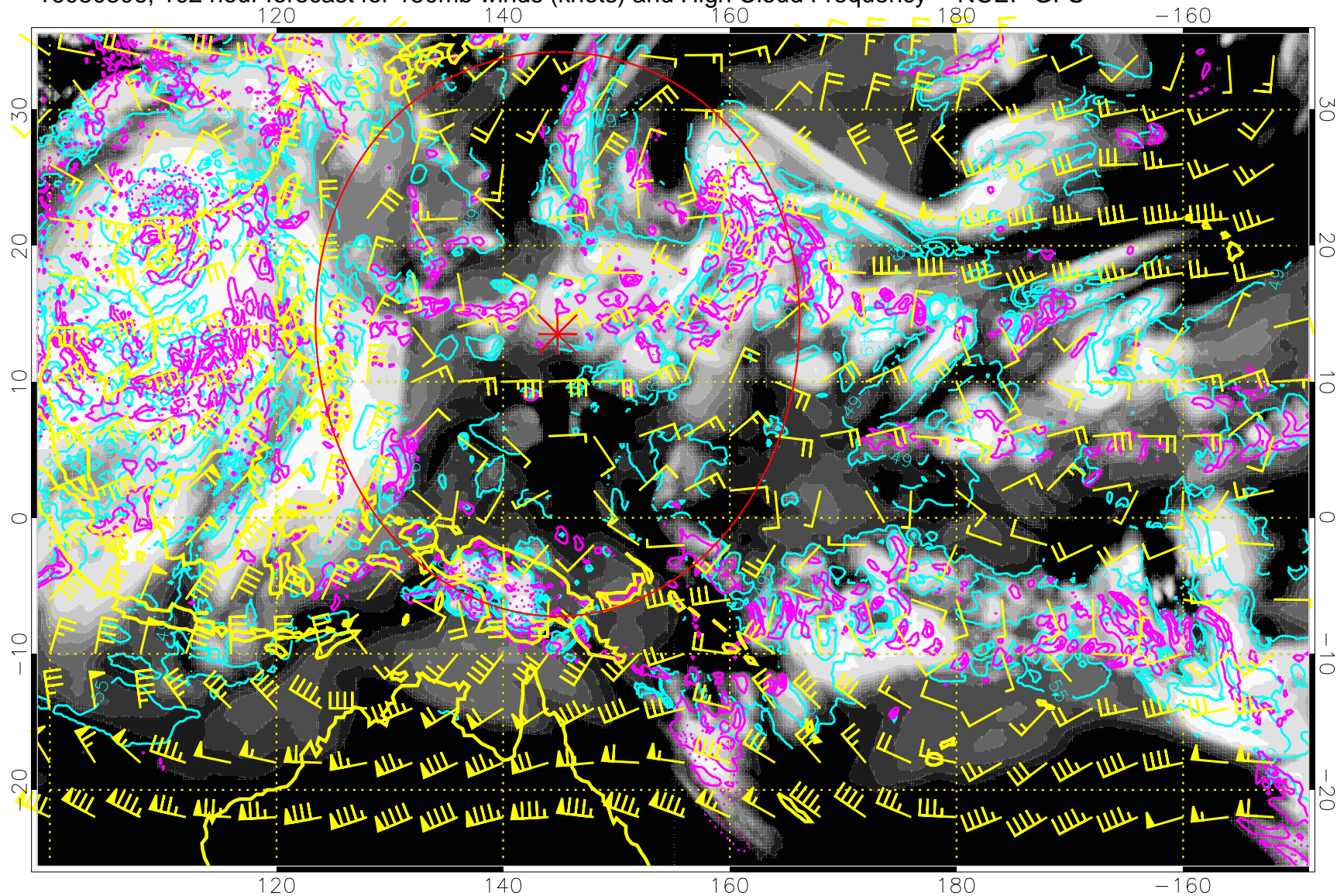
16080300, 96 hour forecast for 150mb winds (knots) and High Cloud Frequency -- NCEP GFS



High Cloud Altitude from 37 kft at 6 kft intervals
Precip (tot dot, conv sol) mm/day 40 mm/day contours, min 20

Range ring of 2304 km

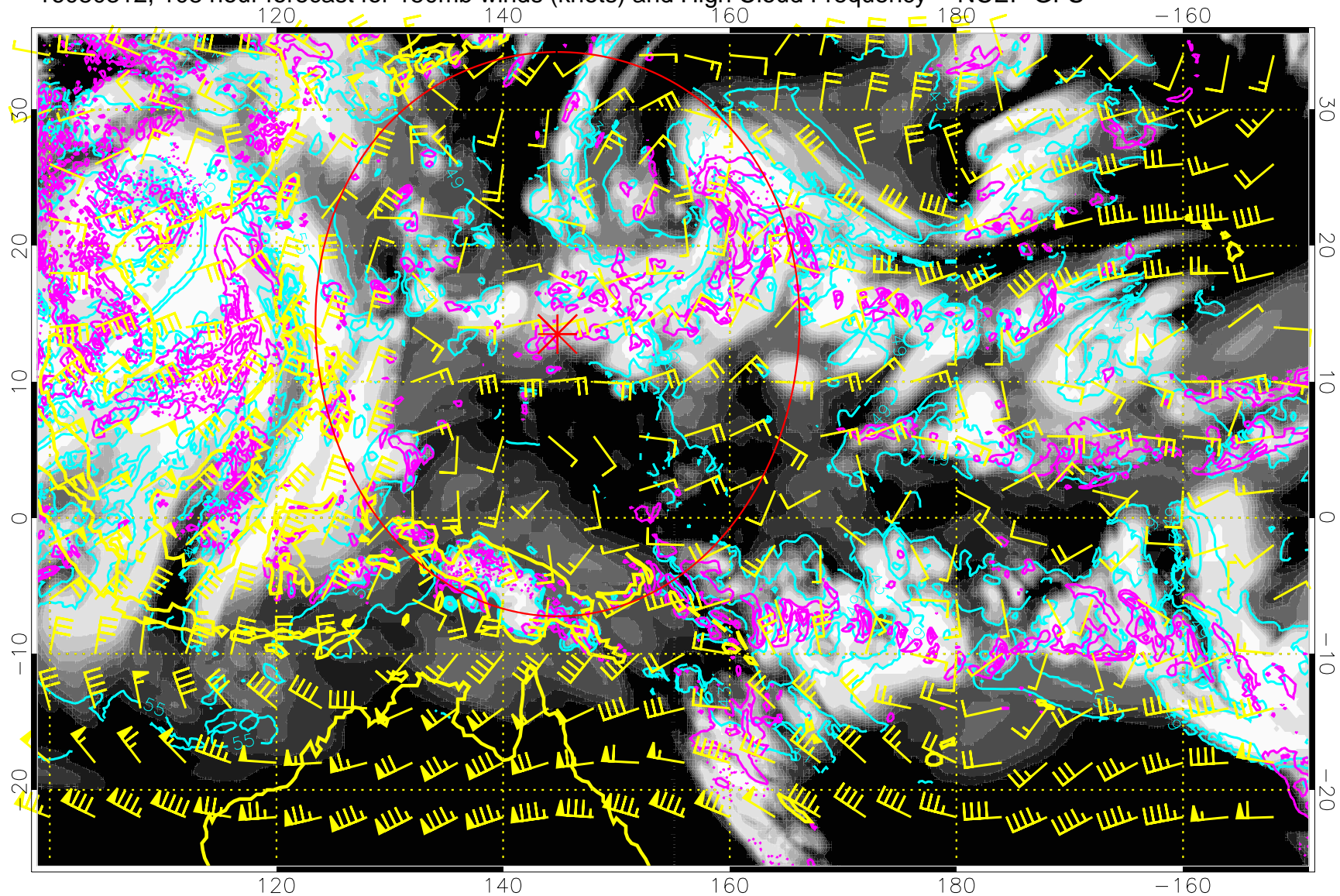
16080306, 102 hour forecast for 150mb winds (knots) and High Cloud Frequency -- NCEP GFS



High Cloud Altitude from 37 kft at 6 kft intervals
Precip (tot dot, conv sol) mm/day 40 mm/day contours, min 20

Range ring of 2304 km

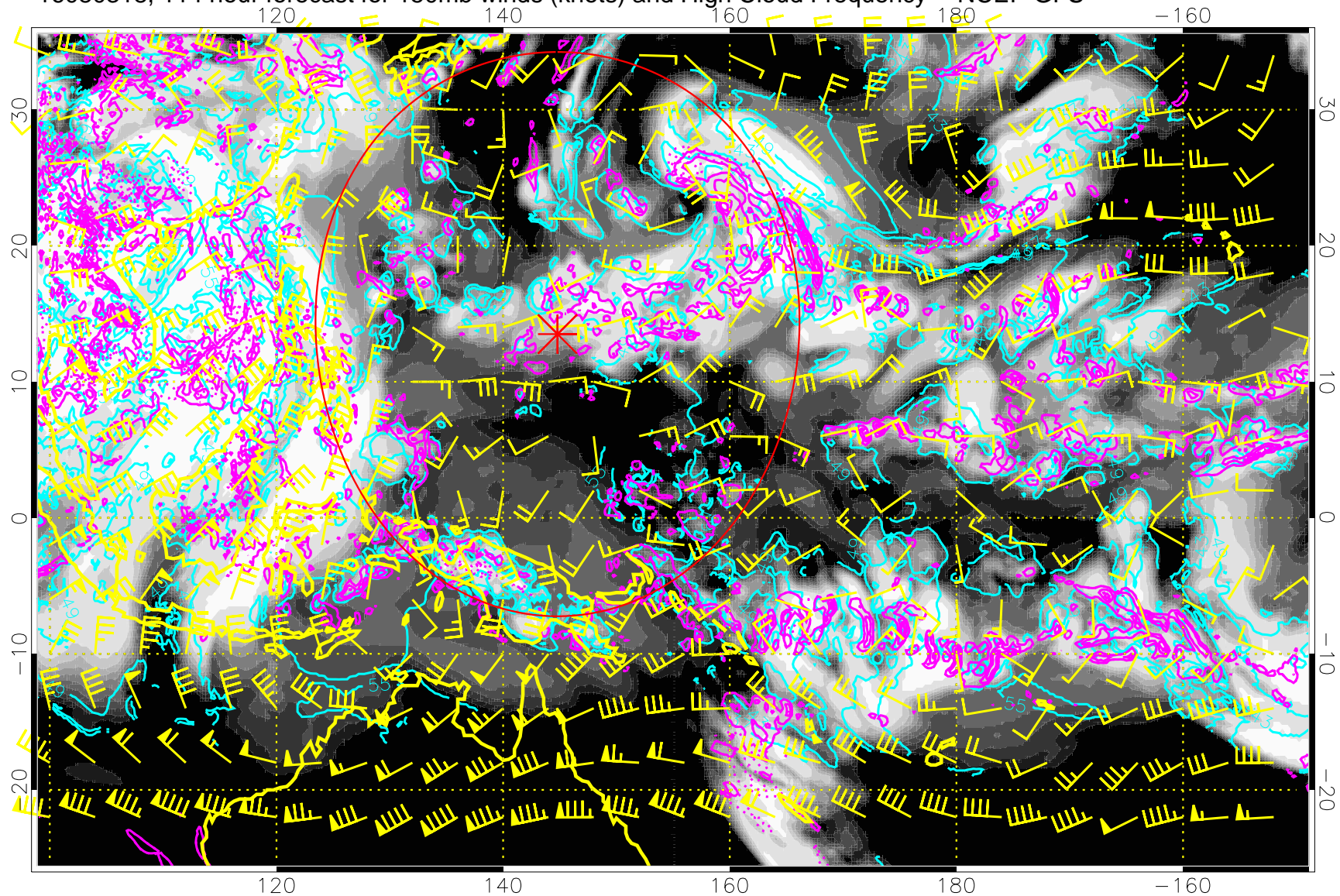
16080312, 108 hour forecast for 150mb winds (knots) and High Cloud Frequency -- NCEP GFS



High Cloud Altitude from 37 kft at 6 kft intervals
Precip (tot dot, conv sol) mm/day 40 mm/day contours, min 20

Range ring of 2304 km

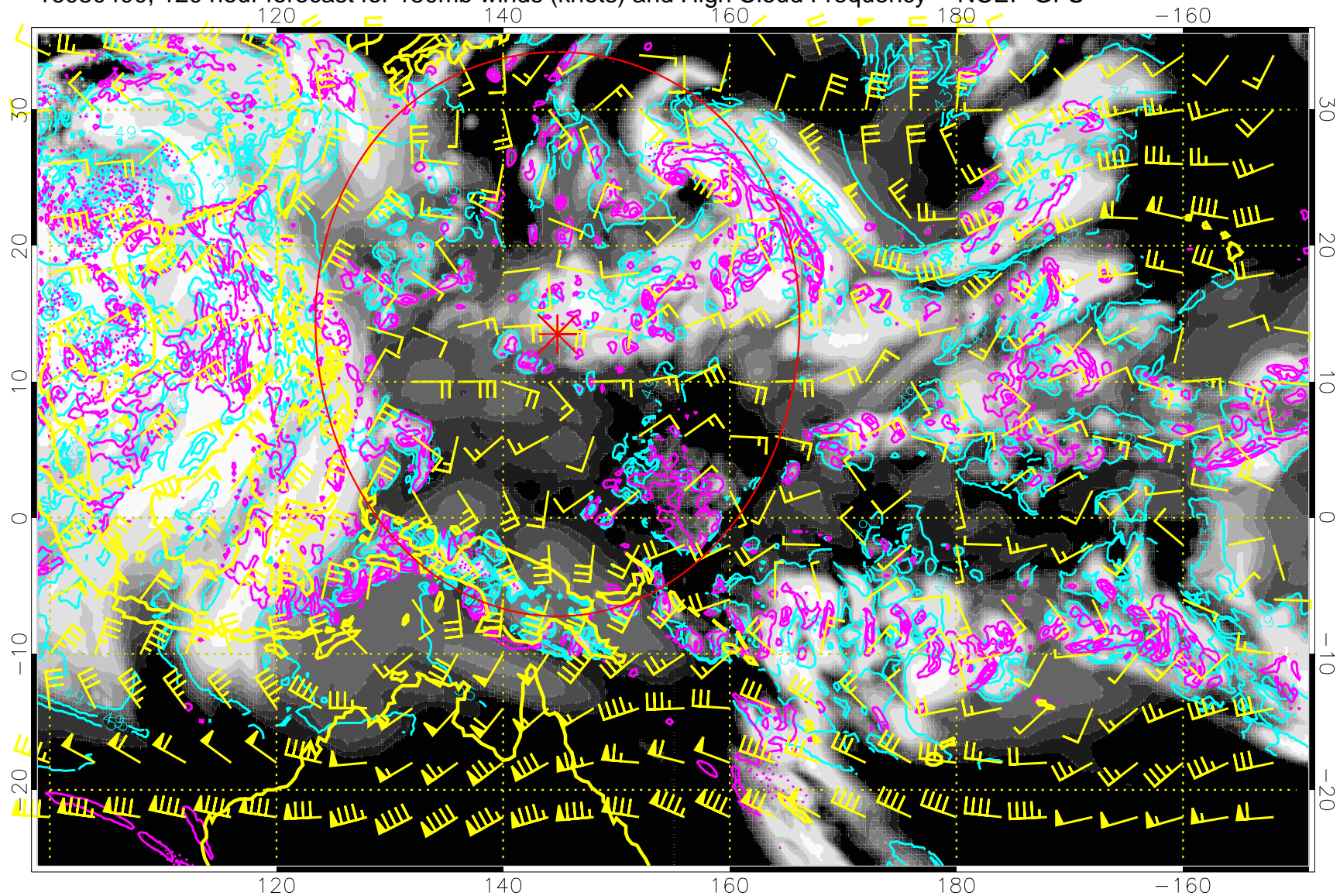
16080318, 114 hour forecast for 150mb winds (knots) and High Cloud Frequency -- NCEP GFS



High Cloud Altitude from 37 kft at 6 kft intervals
Precip (tot dot, conv sol) mm/day 40 mm/day contours, min 20

Range ring of 2304 km

16080400, 120 hour forecast for 150mb winds (knots) and High Cloud Frequency -- NCEP GFS



High Cloud Altitude from 37 kft at 6 kft intervals
Precip (tot dot, conv sol) mm/day 40 mm/day contours, min 20

Range ring of 2304 km