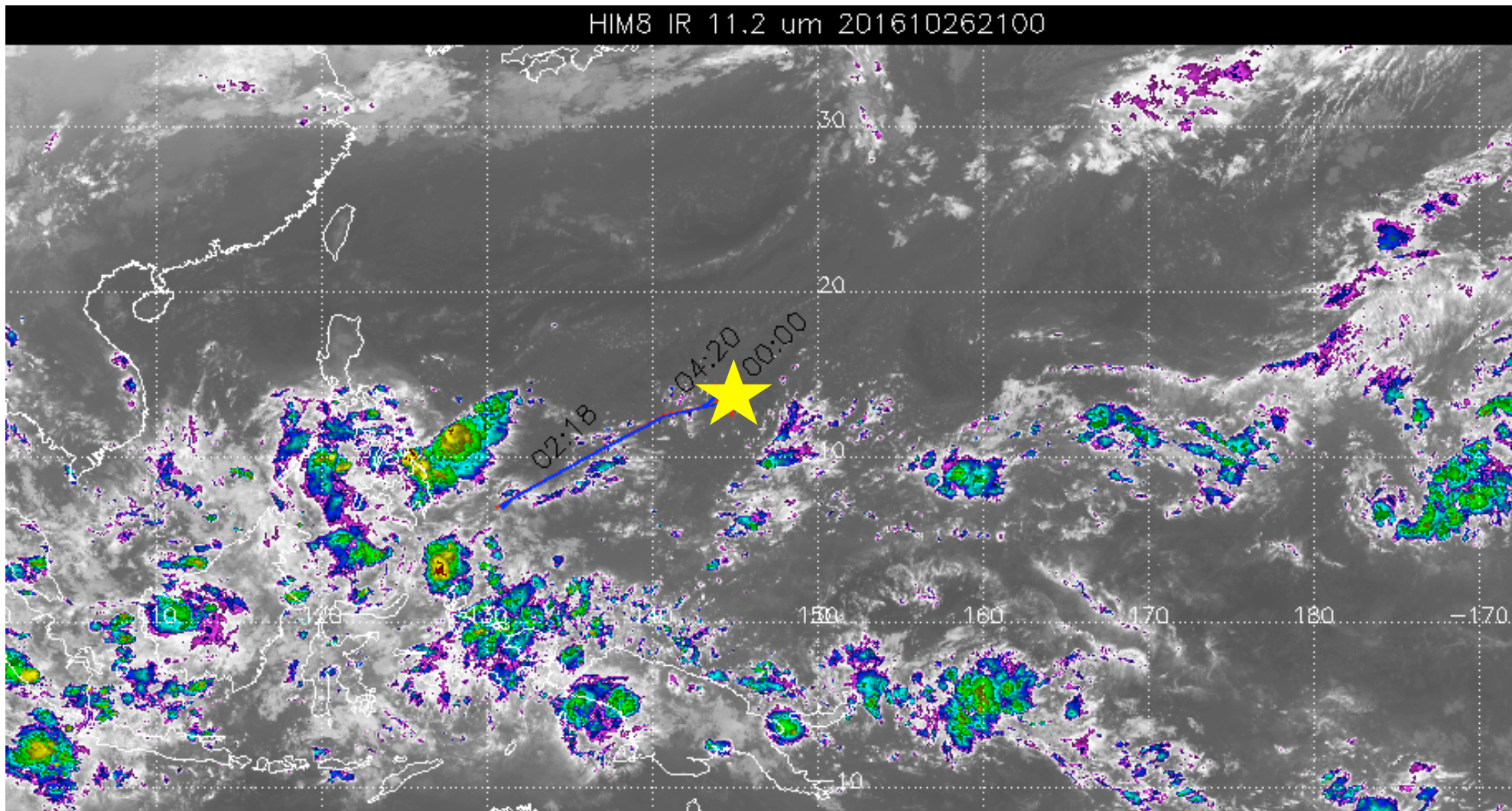


POSIDON

weather briefing

2016-10-27
(next flight: 2016-10-28, Fri)

current IR satellite imagery 10/27, 7am LT



- fairly “active” ITCZ 5-13N, east of Guam (Kwaj forecast)
- trough in eastern Micronesia, moving westward towards Guam (approaching late Sunday)

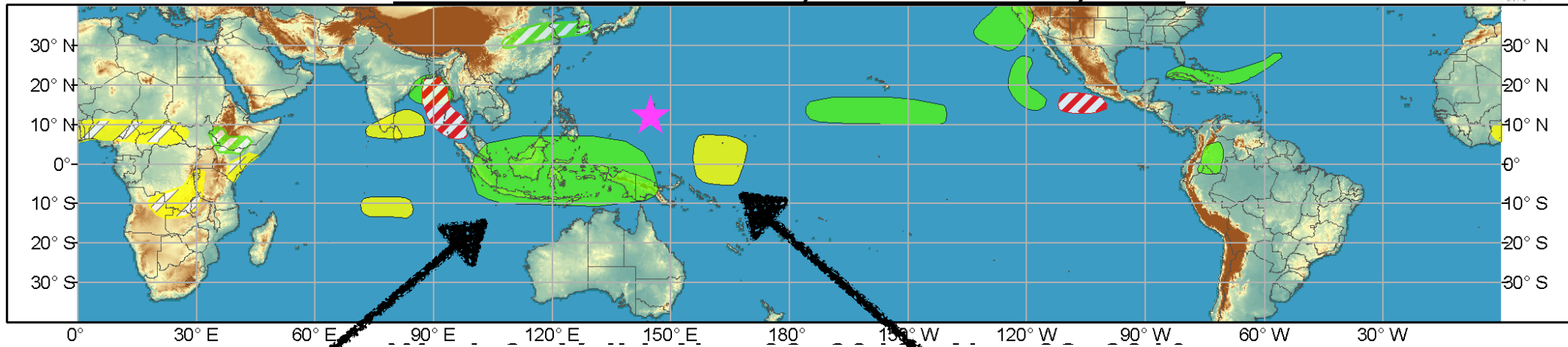
outlook until next Tue (11/1)



Global Tropics Hazards and Benefits Outlook - Climate Prediction Center



Week 1 - Valid: Oct 26, 2016 - Nov 01, 2016



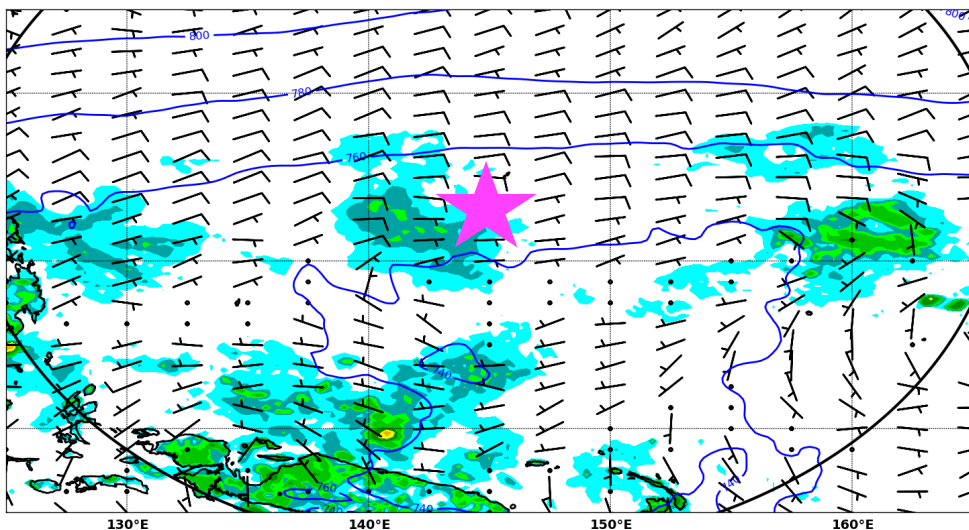
above-average rainfall

below-average rainfall

ECMWF forecast: precip (color) & surface winds

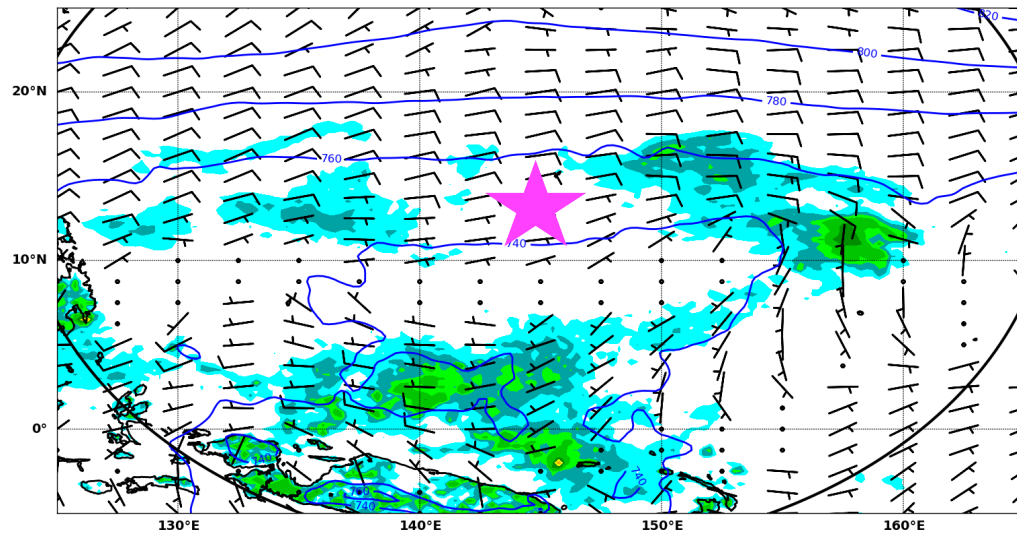
Fri 4pm

ECMWF forecast initialized on Wednesday 26 Oct 2016 12:00UTC, 42hour forecast for 925mb Z, winds and Total precipitation on:
Friday 28 Oct 2016 06:00UTC , Guam time: Friday 28 Oct 2016 16:00



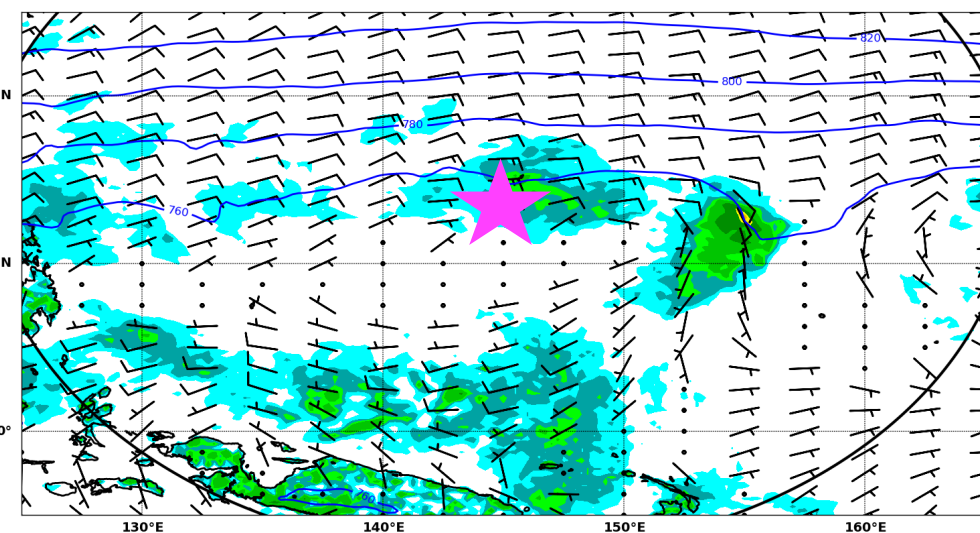
Sat 4pm

ECMWF forecast initialized on Wednesday 26 Oct 2016 12:00UTC, 66hour forecast for 925mb Z, winds and Total precipitation on:
Saturday 29 Oct 2016 06:00UTC , Guam time: Saturday 29 Oct 2016 16:00



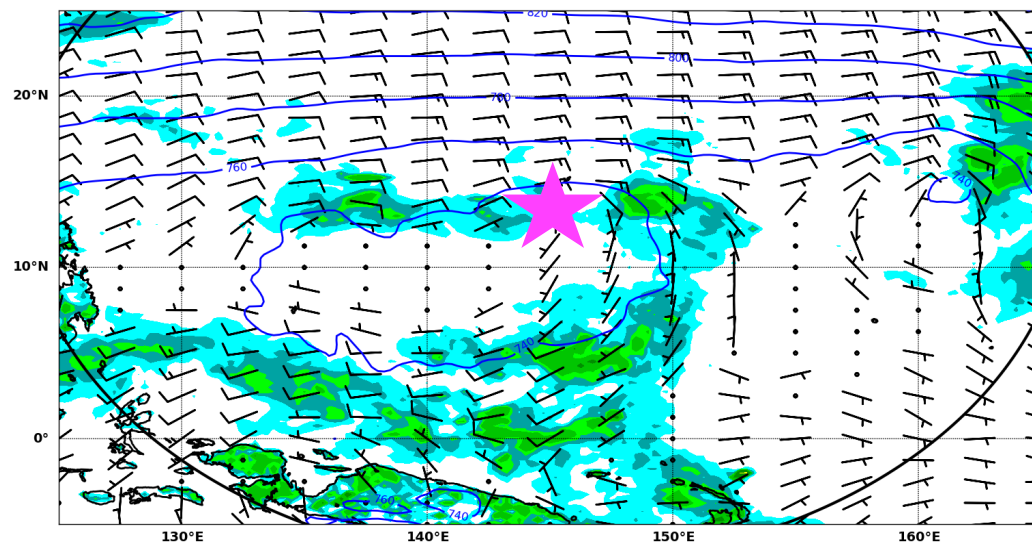
Sun 4pm

ECMWF forecast initialized on Wednesday 26 Oct 2016 12:00UTC, 90hour forecast for 925mb Z, winds and Total precipitation on:
Sunday 30 Oct 2016 06:00UTC , Guam time: Sunday 30 Oct 2016 16:00



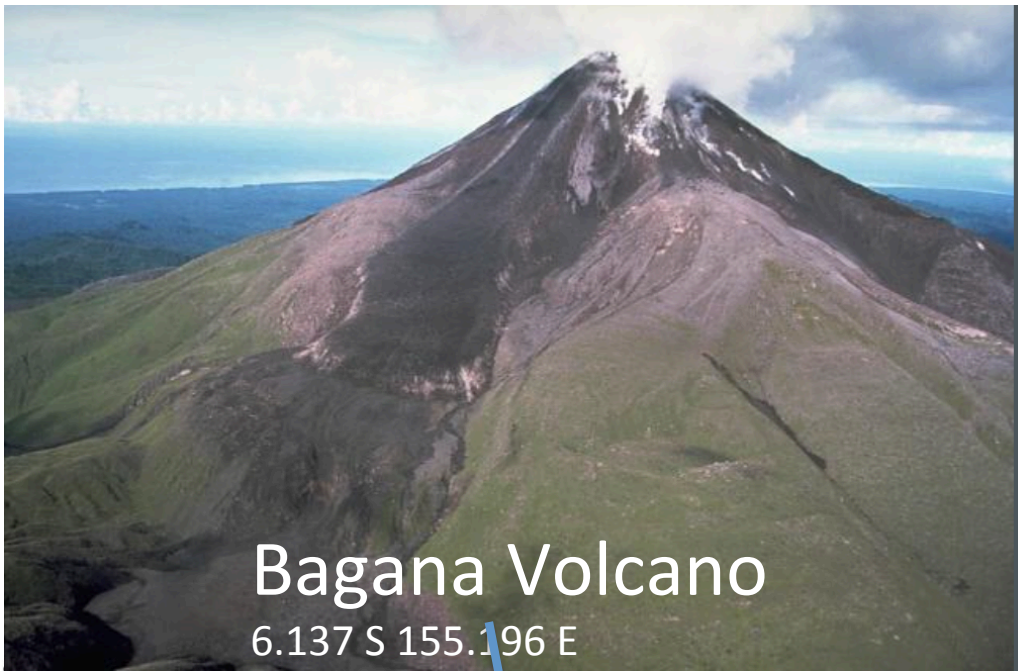
Mon 4pm

ECMWF forecast initialized on Wednesday 26 Oct 2016 12:00UTC, 114hour forecast for 925mb Z, winds and Total precipitation on:
Monday 31 Oct 2016 06:00UTC , Guam time: Monday 31 Oct 2016 16:00



Summary

- Weak disturbances from the east increase cloudiness and chance of showers and T-storms through the weekend and Monday
- Takeoff & landing conditions at Guam, Fri-Mon — winds look OK (E-ESE 10-15)
 - Fri 10/28: cloudy skies and isolated showers in the morning, isolated showers at landing
 - Sat 10/29: isolated showers and T-storms
 - Sun 10/30: scattered showers, isolated T-storms
 - Mon 10/31: scattered showers, isolated T-storms; winds turn from NE to S-SE 10-15 knots in the afternoon

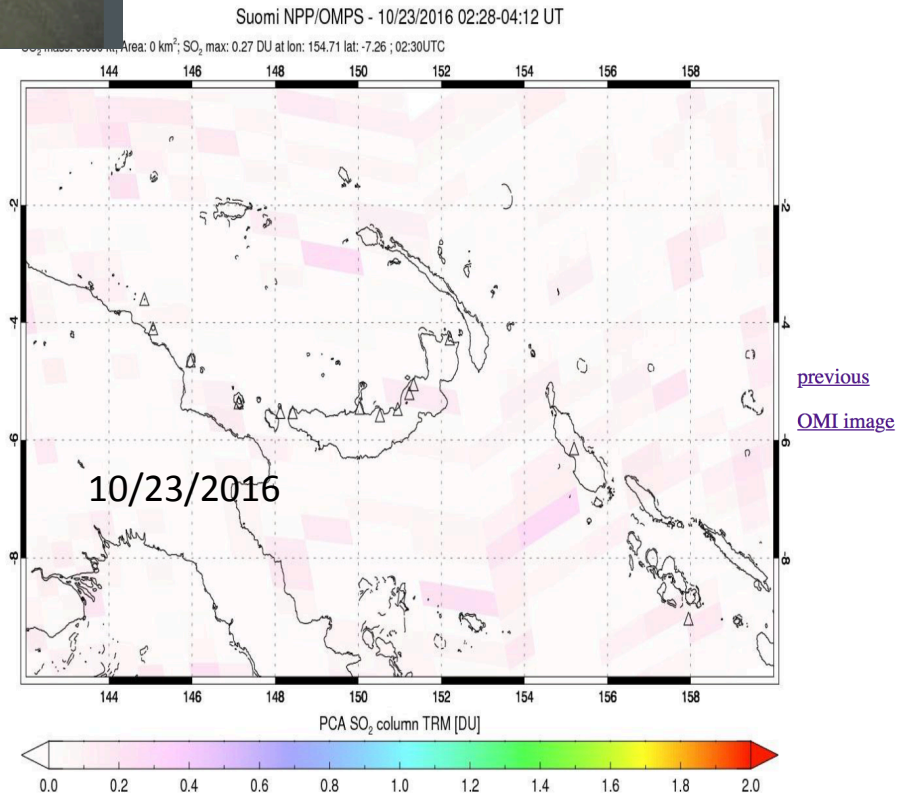
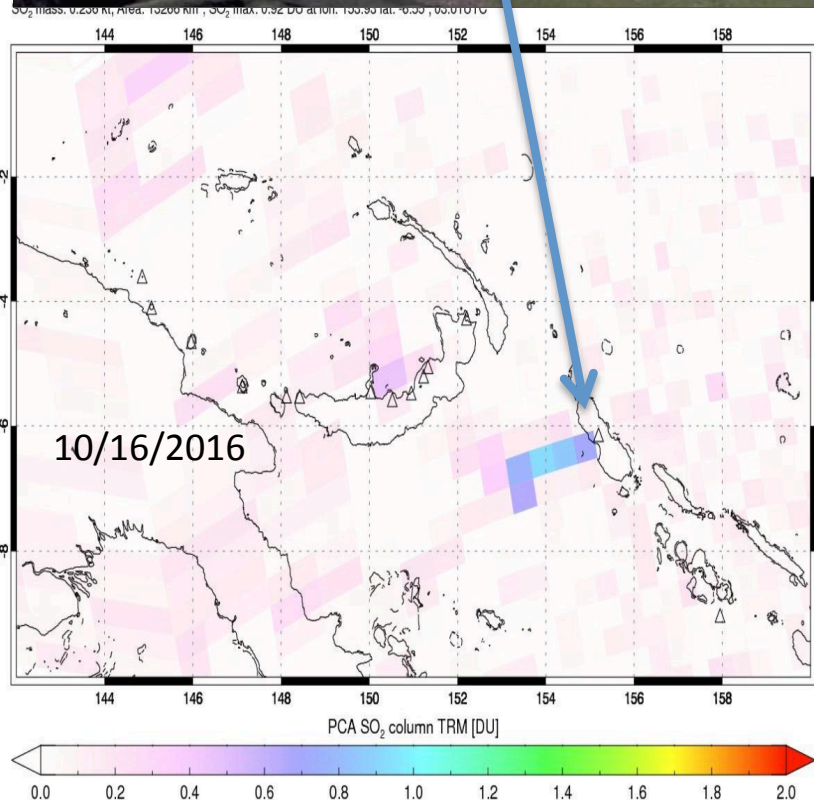


Bagana Volcano

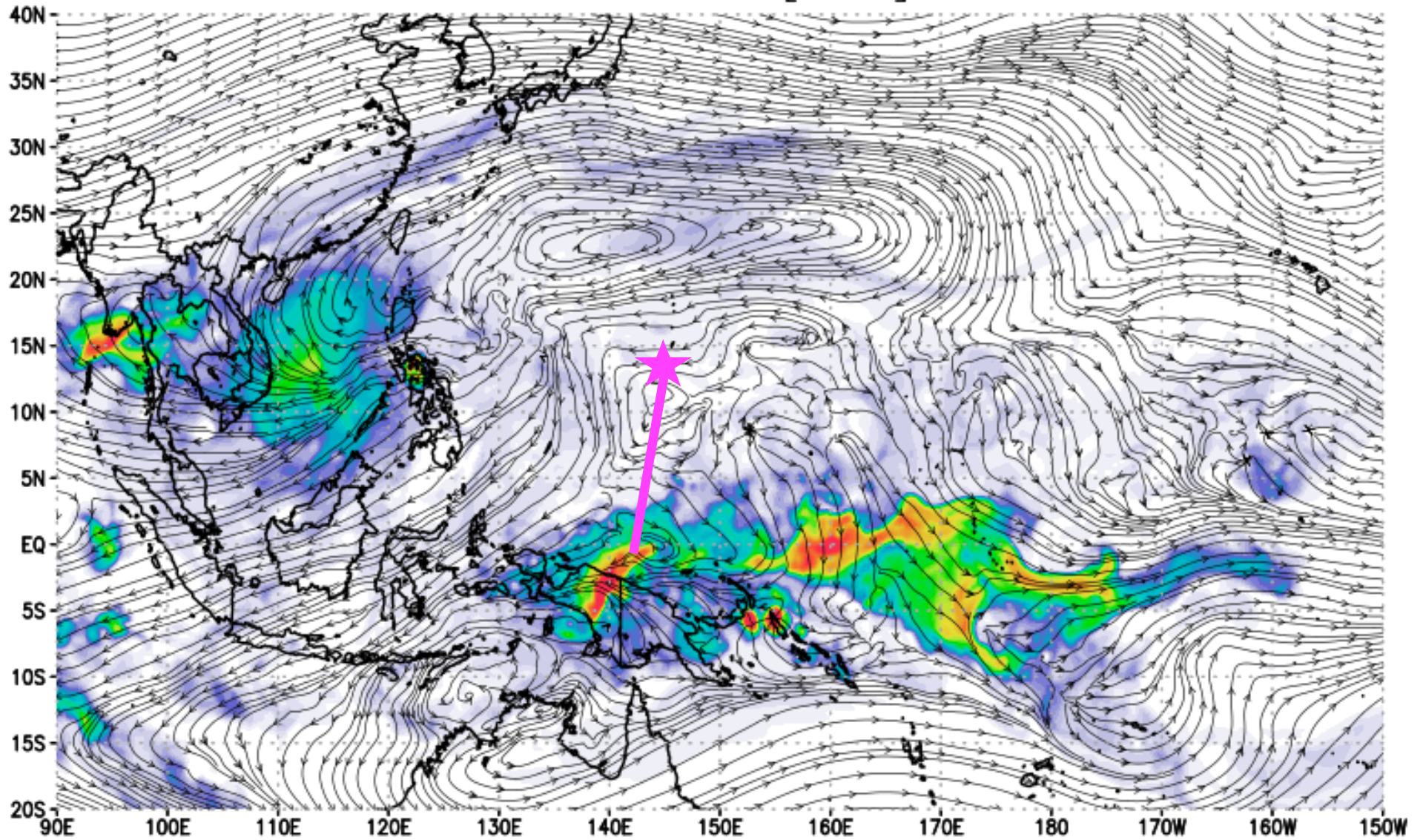
6.137 S 155.196 E

Bagana is constantly fuming SO₂

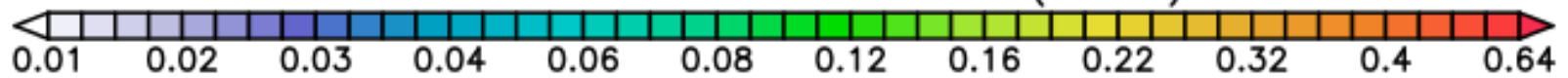
The plumes can be seen in the OMPS nadir imager.



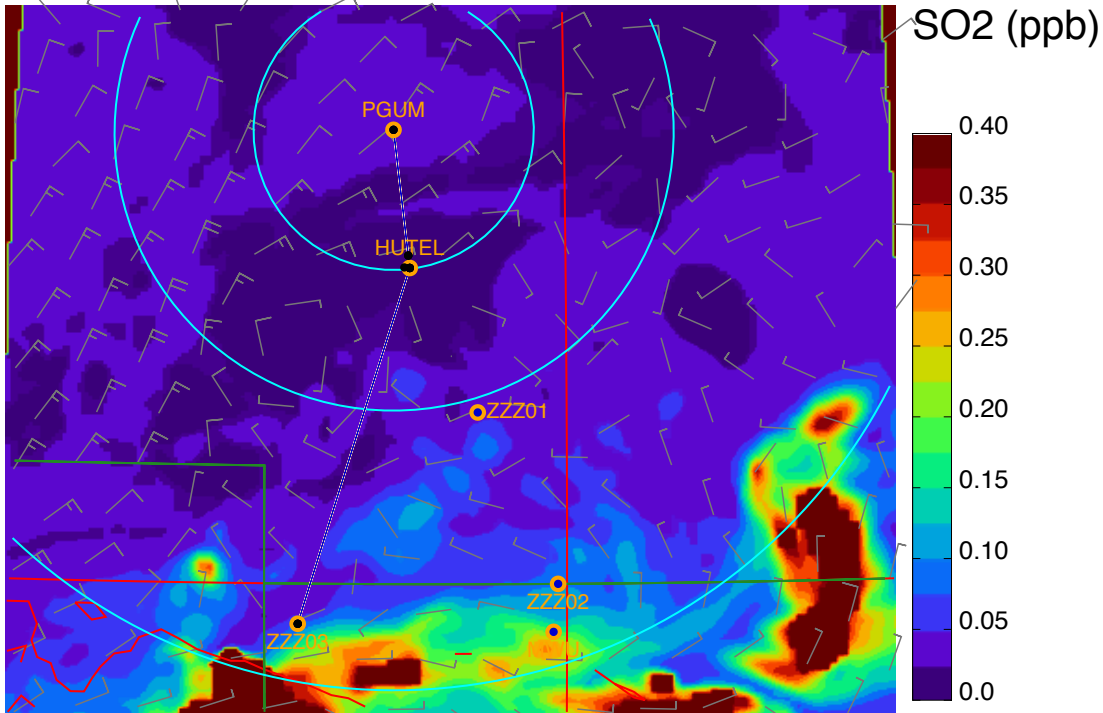
150 hPa S02 [PPBV]



Valid: Fri 03z 2016-10-28 ($\tau=39$)



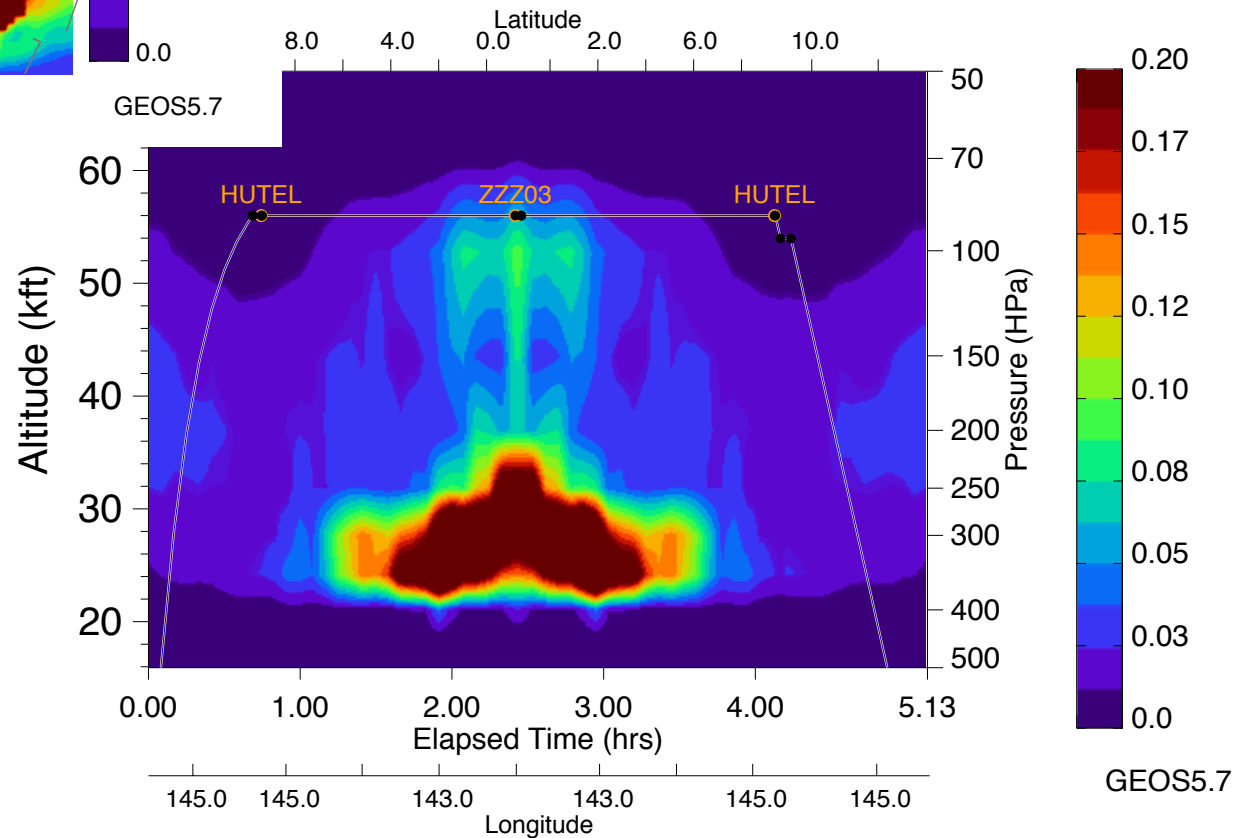
2016-10-28T03:15 UTC (54-hr fcst) at 150.0 HPa



10/28 (Fri) flight plan

total distance: 1846 nmi

SO2 forecast



transit flight Guam to Kwajalein

Aura OMI/MLS Tropo O3 (DU) 21-24 October 2016

