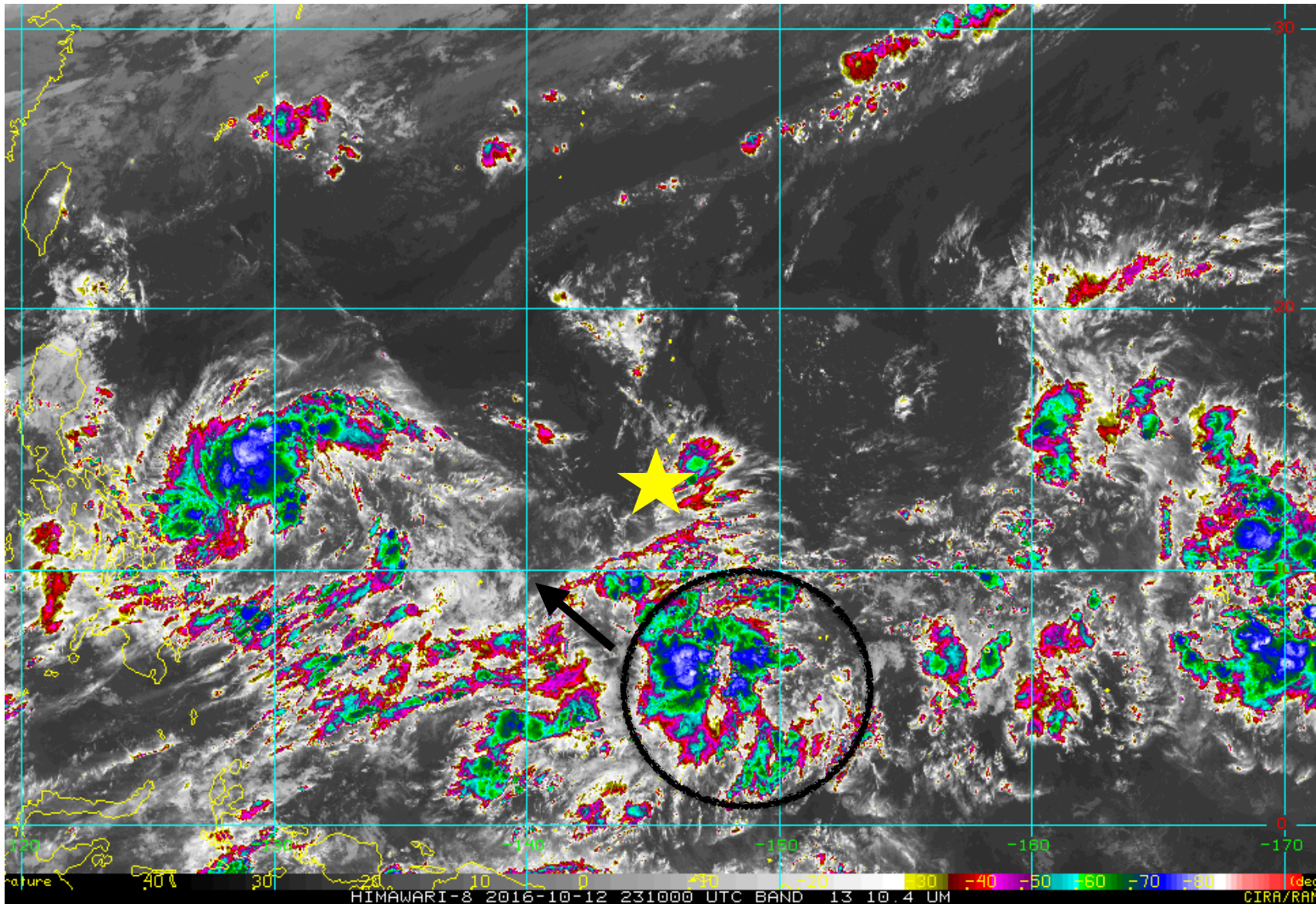


# POSIDON

## weather briefing

2016-10-13  
(next flight: 2016-10-14, Fri)

# current IR satellite imagery 10/13, 9:10am LT

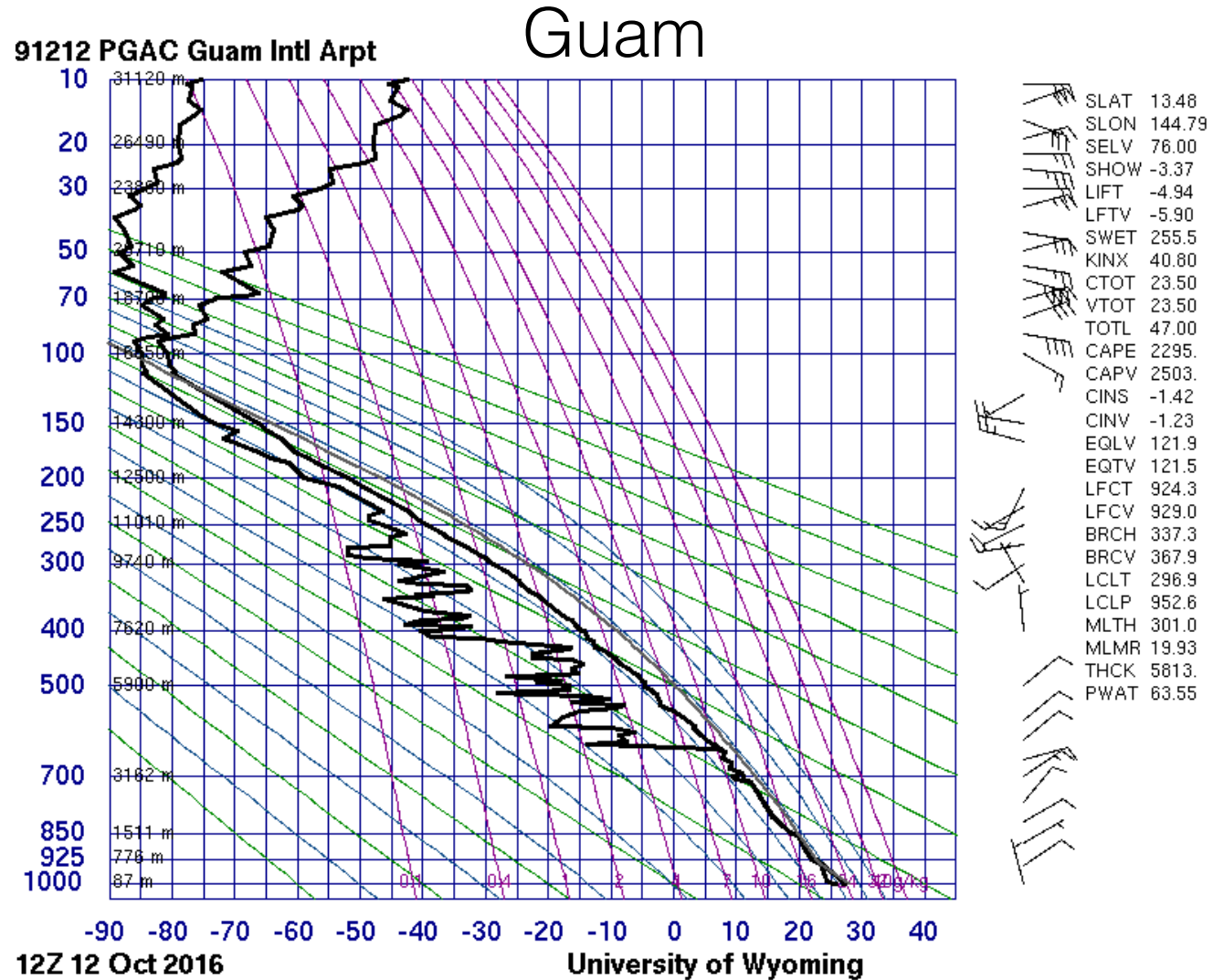


Circulation SE of Guam passes south of Guam on Saturday

# Summary

- Circulation located SE of Guam, moving NW and passing south of Guam on Saturday.
  - Scattered showers and isolated T-storms Friday night through Sunday
  - Winds turning SE on Saturday — may exceed crosswind limit on Sunday, but confidence is low
- Fri 10/14: Isolated showers & thunderstorms, E 10-15 knot winds — takeoff & landing conditions OK for flying
- Sat 10/15: Scattered showers and isolated thunderstorms, ESE 10-15 knot winds
- Sun 10/16: Scattered showers and isolated thunderstorms, SE 10-20 knot winds — need to monitor crosswind

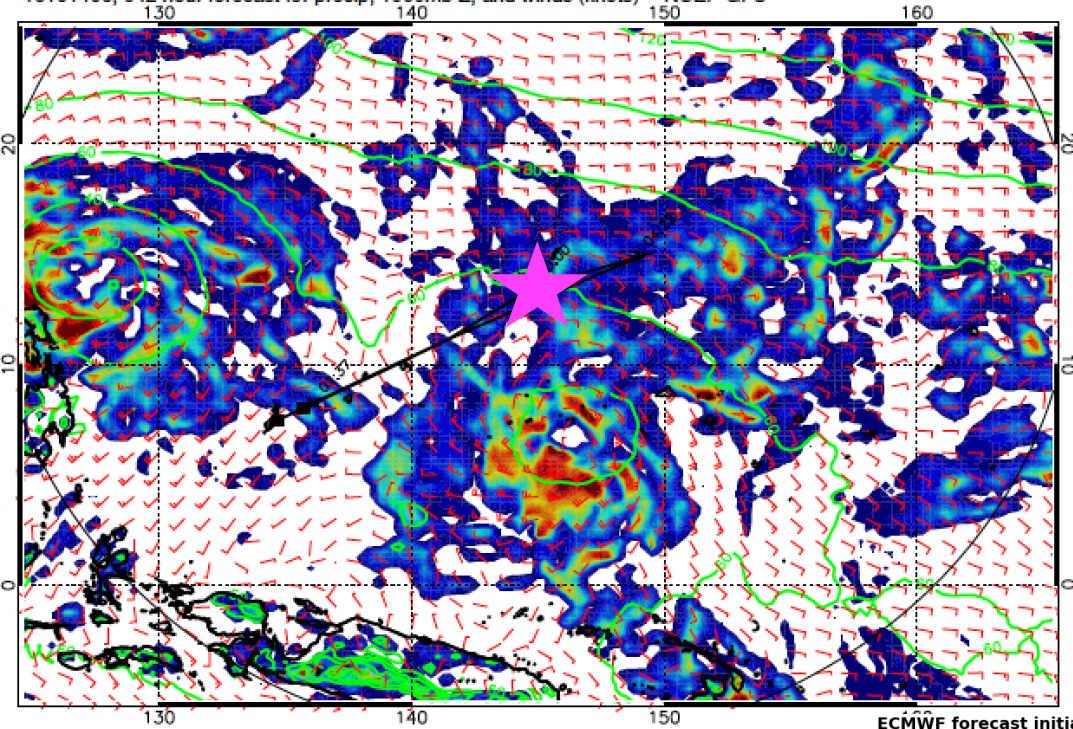
# Guam sounding: 10/13, 10pm LT



tropopause height and T: ~98 mb (~54 kft), ~190K

# GFS forecast

16101406, 042 hour forecast for precip, 1000mb Z, and winds (knots) - NCEP GFS



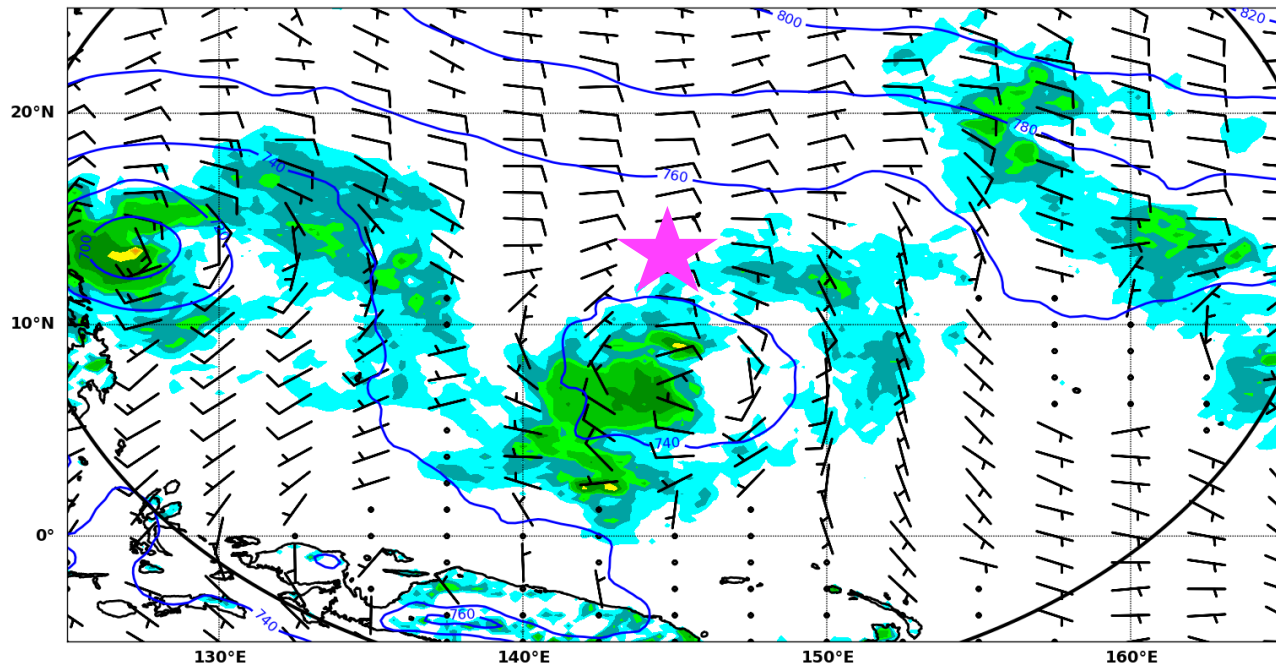
## Fri 10/14 @ 4pm

precip (color)  
winds

# ECMWF forecast

ECMWF forecast initialized on Wednesday 12 Oct 2016 12:00UTC, 42hour forecast for 925mb Z, winds and Total precipitation on:  
Friday 14 Oct 2016 06:00UTC , Guam time: Friday 14 Oct 2016 16:00

similar position of the  
circulation in both models



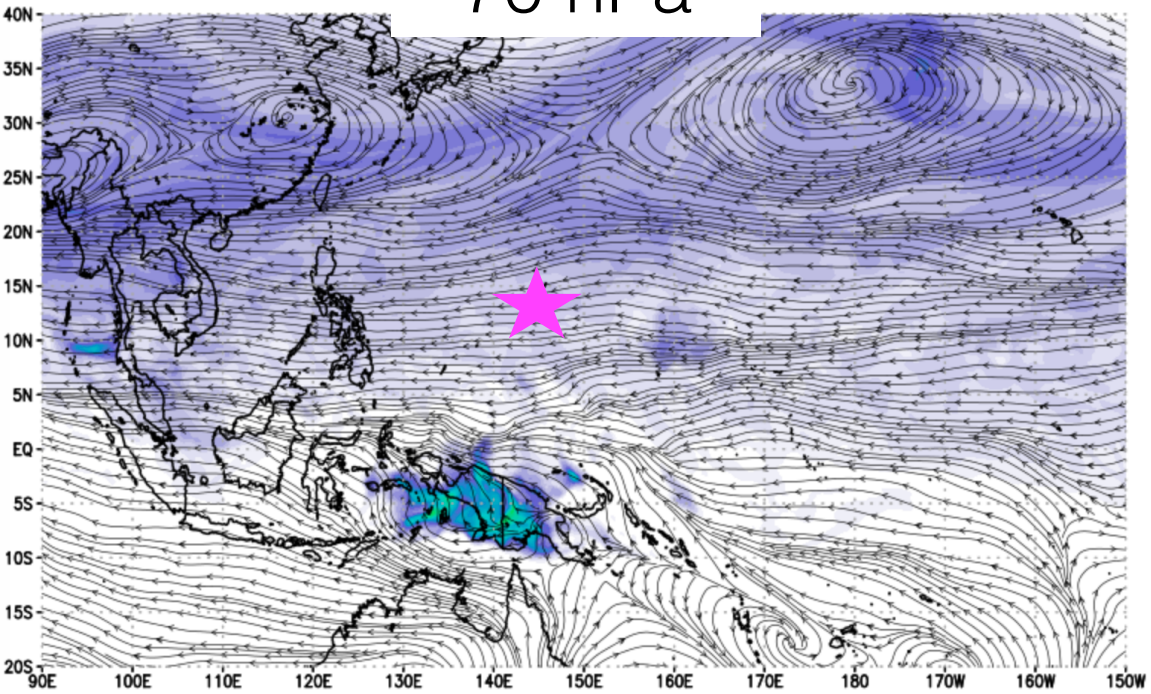
# Takeoff & Landing conditions

	wind (knots)	wx
<p>Fri</p> <p>10/14 00Z (10am)</p> <p>10/14 06Z (4pm)</p>	<p>E 10-15</p> <p>E 10-15</p>	<p>isolated showers and</p> <p>T-storms</p>
<p>Sat</p> <p>10/15 00Z (10am)</p> <p>10/15 06Z (4pm)</p>	<p>ESE 10</p> <p>ESE 10-15</p>	<p>scattered showers,</p> <p>isolated T-storms</p>
<p>Sun</p> <p>10/16 00Z (10am)</p> <p>10/16 06Z (4pm)</p>	<p>ESE 15-20</p> <p>SE 10-20</p>	<p>scattered showers,</p> <p>isolated T-storms;</p> <p>may exceed crosswind limit</p>

70 hPa

# 10/14 (Fri) flight plan

NASA/GMAO - GEOS-5 Forecast Initialized on 12z 2016-10-12



SO2 maps

100 hPa

