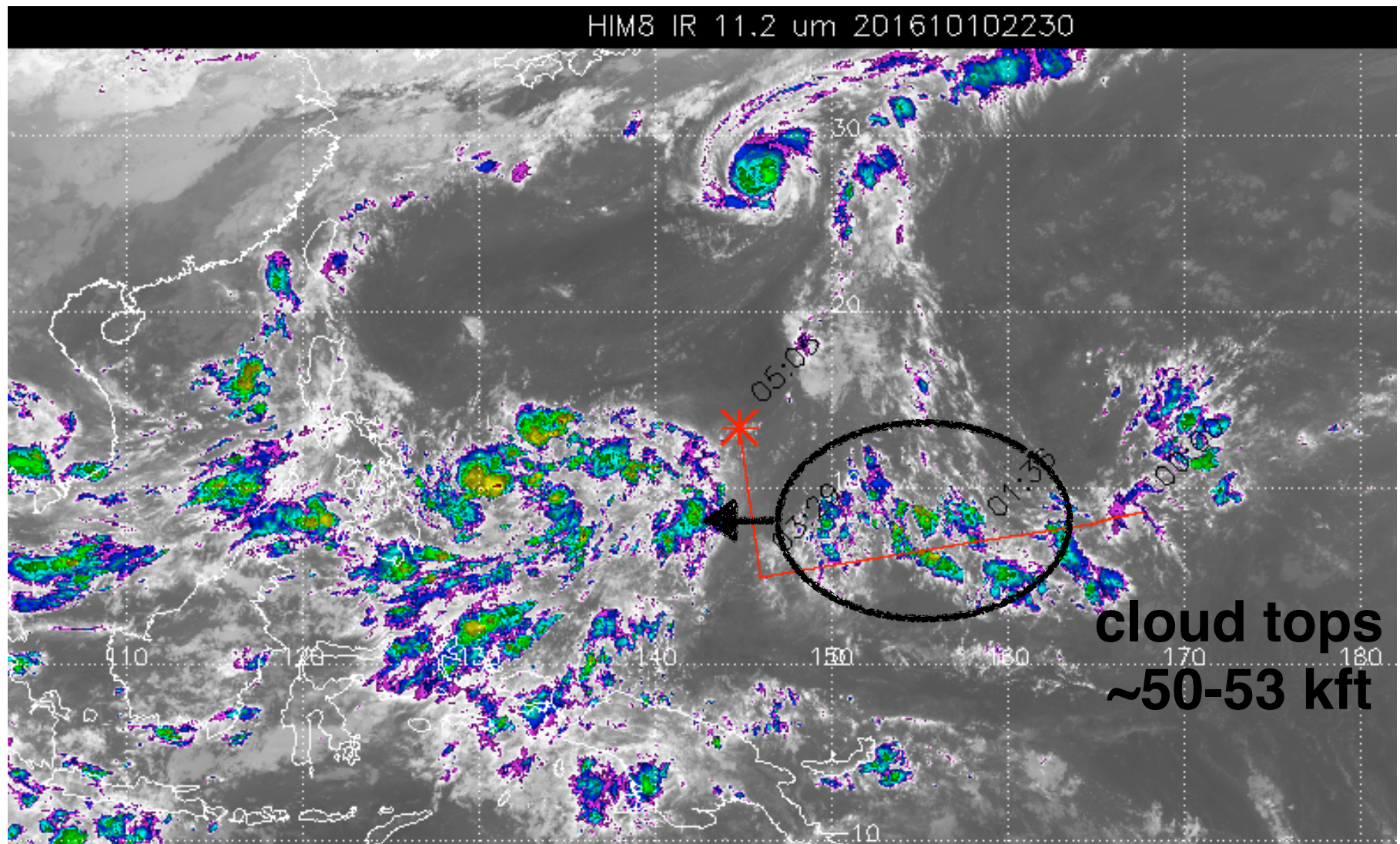


POSIDON

weather briefing

2016-10-11
(next flight: 2016-10-12, Wed)

current IR satellite imagery 10/11, 8:30am LT



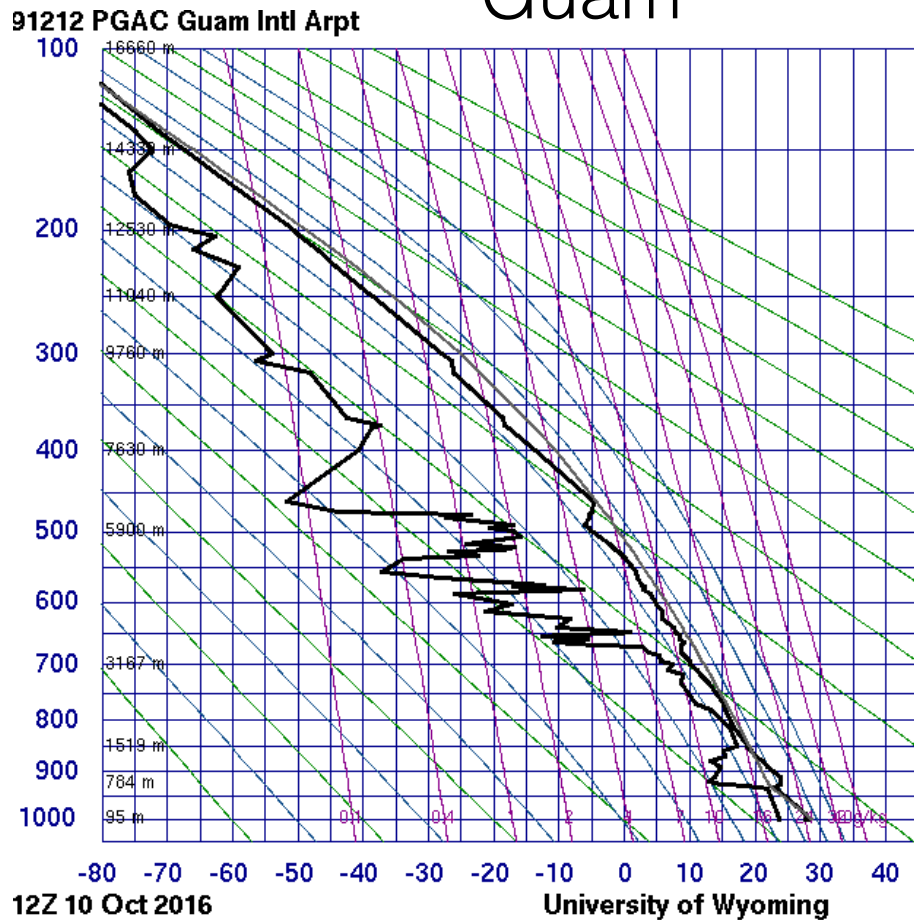
Typhoon Songda to the N, disturbances to the SW and SE
—> subsidence and dryness over Guam

Summary

- A weak disturbance approaching from the east, increasing moisture over Guam starting tonight-Wed, and bringing showers and thunderstorms over our region later in the week (Thu through weekend)
- Wed 10/12: Isolated thunderstorms, E 10 knot winds — Takeoff conditions should be OK; increased chance of showers at landing so need to monitor (but still look OK)
- Thu-Fri 10/13-14: Scattered showers and isolated thunderstorms, E 10 knot winds — need to monitor precip at takeoff and landing

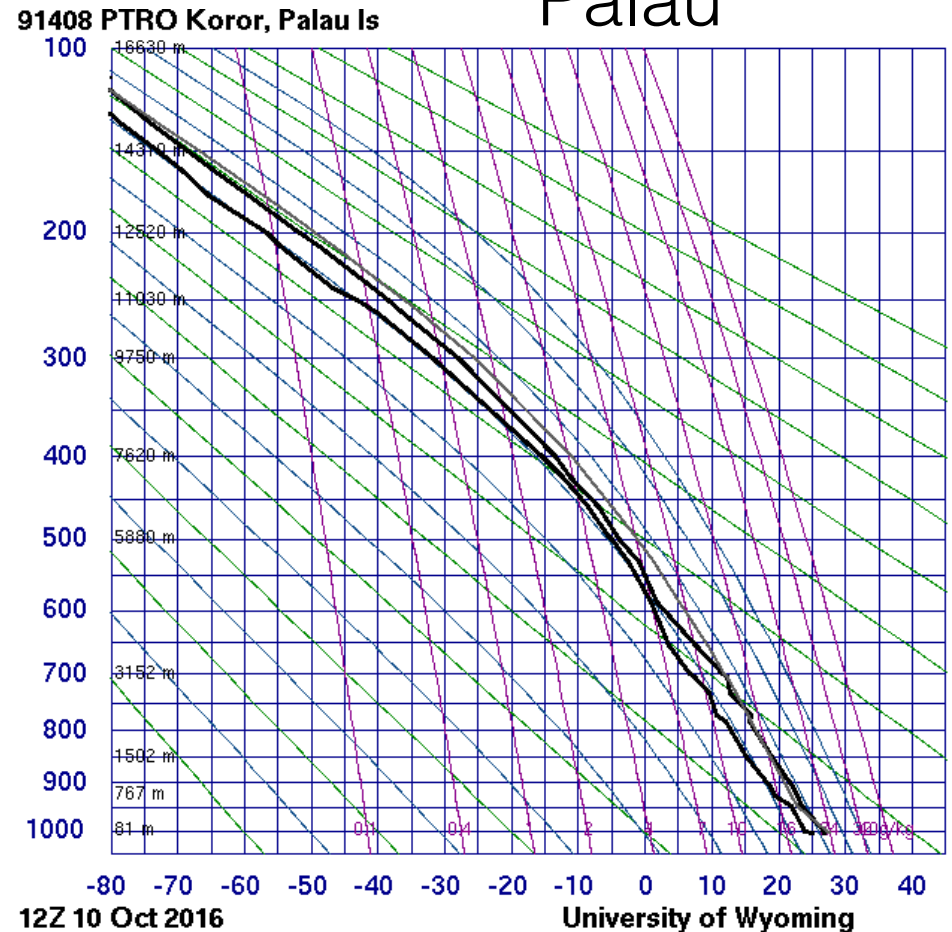
sounding: 10/10, 10pm LT

Guam



tropopause height and T:
100 mb (~53 kft), ~187K

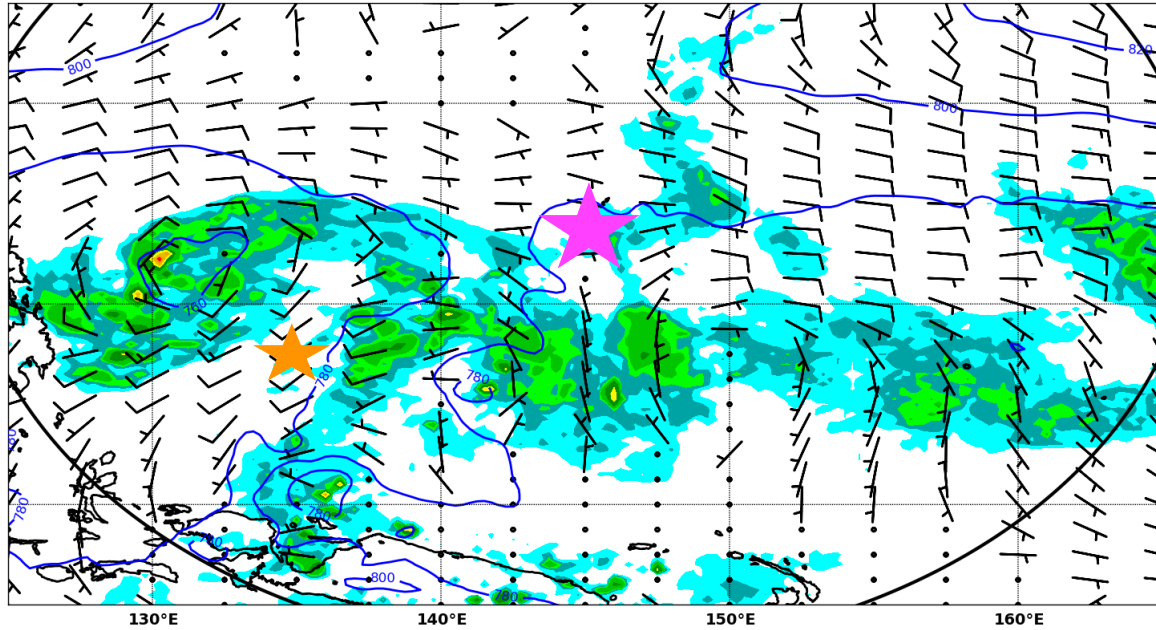
Palau



tropopause height and T:
96 mb (~54 kft), ~188K

Wed 10/12, 10am

ECMWF forecast initialized on Monday 10 Oct 2016 12:00UTC, 36hour forecast for 925mb Z, winds and Total precipitation on:
Wednesday 12 Oct 2016 00:00UTC, Guam time: Wednesday 12 Oct 2016 10:00



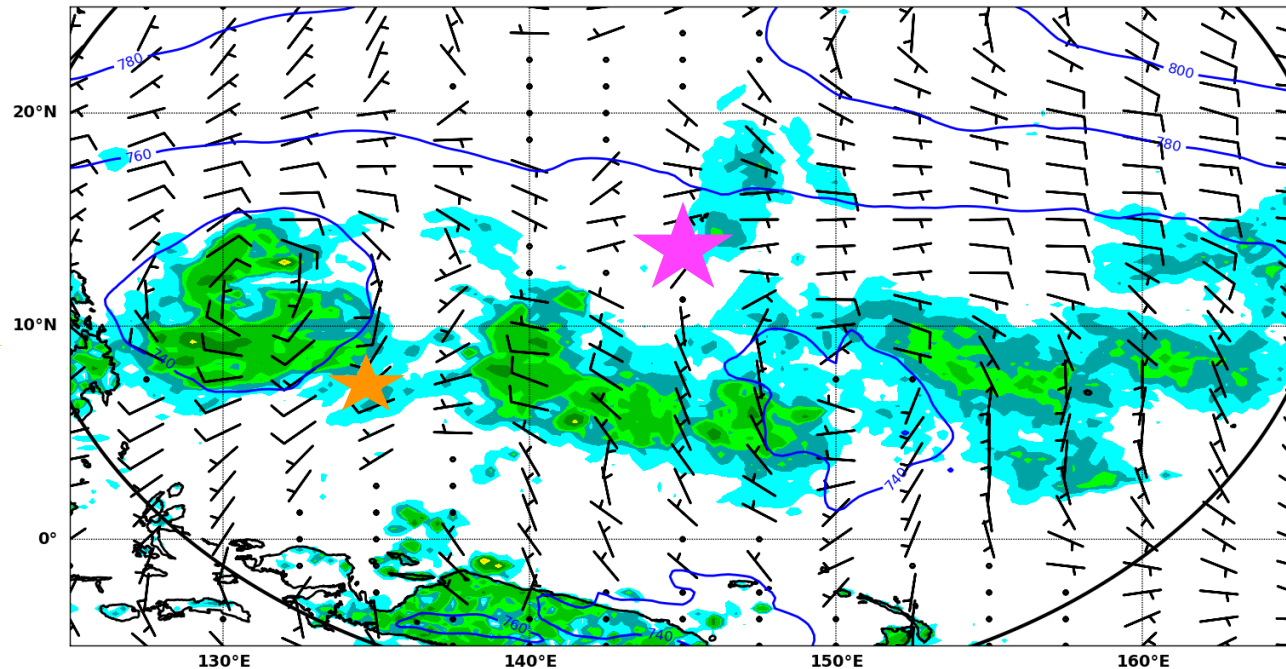
ECMWF forecast

precip (color)
winds


(ECMWF model predicts more organized system moving faster towards Guam compared to GFS)

Wed 10/12, 4pm

ECMWF forecast initialized on Monday 10 Oct 2016 12:00UTC, 42hour forecast for 925mb Z, winds and Total precipitation on:
Wednesday 12 Oct 2016 06:00UTC, Guam time: Wednesday 12 Oct 2016 16:00

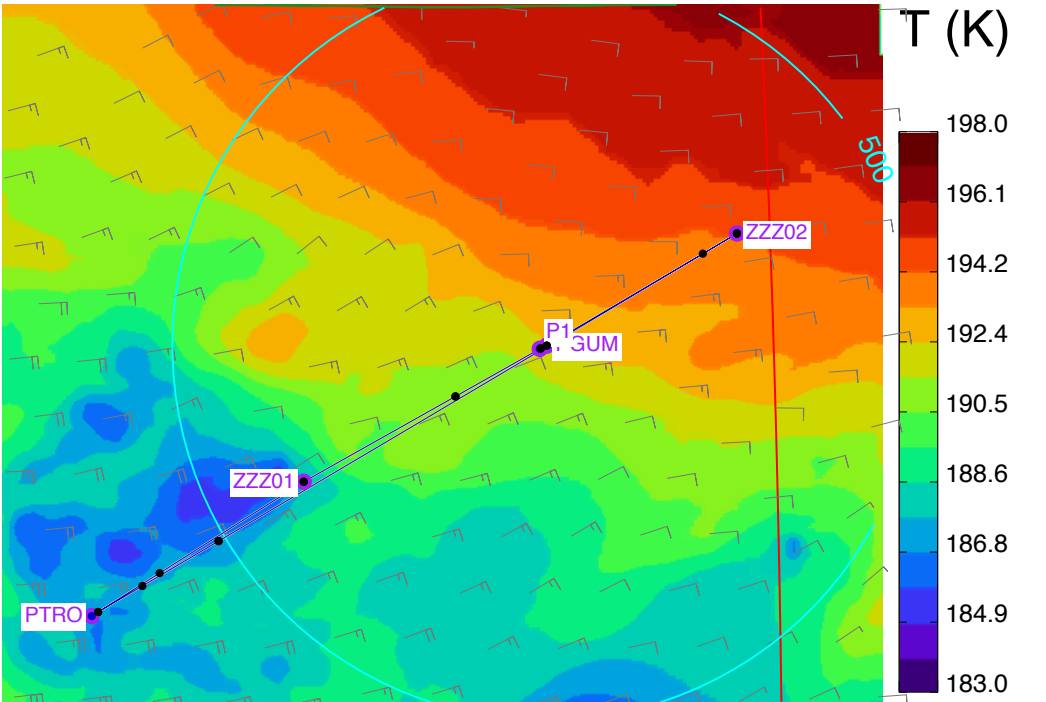


circulation/trough SE of Guam, moves towards our region —> showers increase around Thu

Disturbance over Palau  that is bringing showers today is expected to weaken tomorrow

Takeoff & Landing conditions

	wind (knots)	wx
Wed 10/12 00Z (10am) 10/12 06Z (4pm)	E 10 ENE 10	isolated T-storms; <i>scattered showers possible at landing</i>
Thu 10/13 00Z (10am) 10/13 06Z (4pm)	E 10 E 10	scattered showers, isolated T-storms
Fri 10/14 00Z (10am) 10/14 06Z (4pm)	E 10 E 10	scattered showers, isolated T-storms



10/12 (Wed) flight plan

total distance: 1986 nmi

WND2 (m/s)

GEOS5.72

