

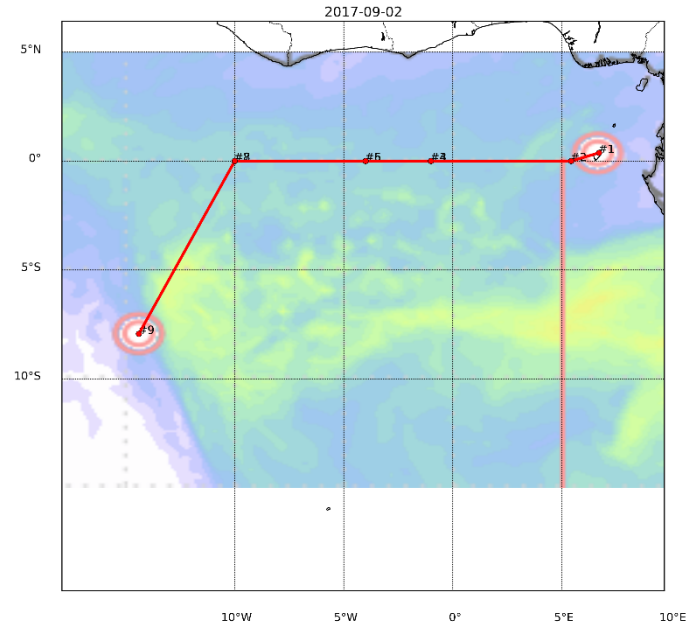


Aerosols forecast briefing

Friday, 1 September 2017 (update)



ORACLES ESPO



Saturday, 2 September 2017

Transit flight to Ascension Island – Potential North route



ORACLES ESPO
NASA

Cross sections – Equator

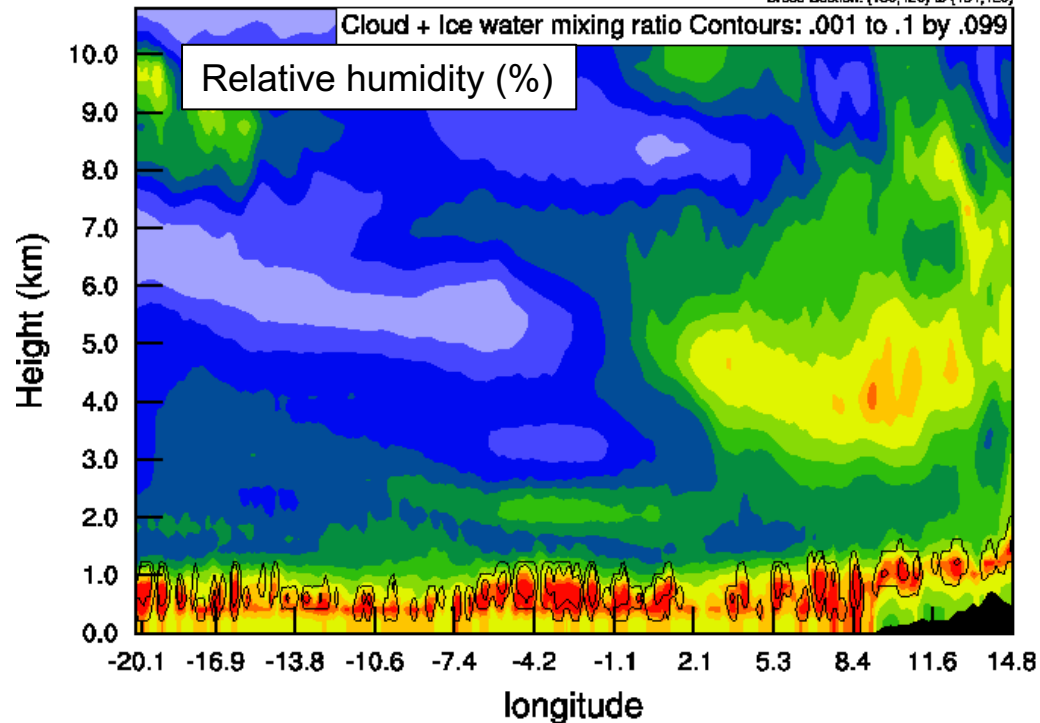
Sat, 2 Sep 12Z

W-E at 0S

Init: 2017-08-28 00:00:00
Valid: 2017-08-02_12:00:00

Relative Humidity (%)
Cloud + ice water mixing ratio (g/kg)
Main

Cross-Section: (130,420) to (454,420)

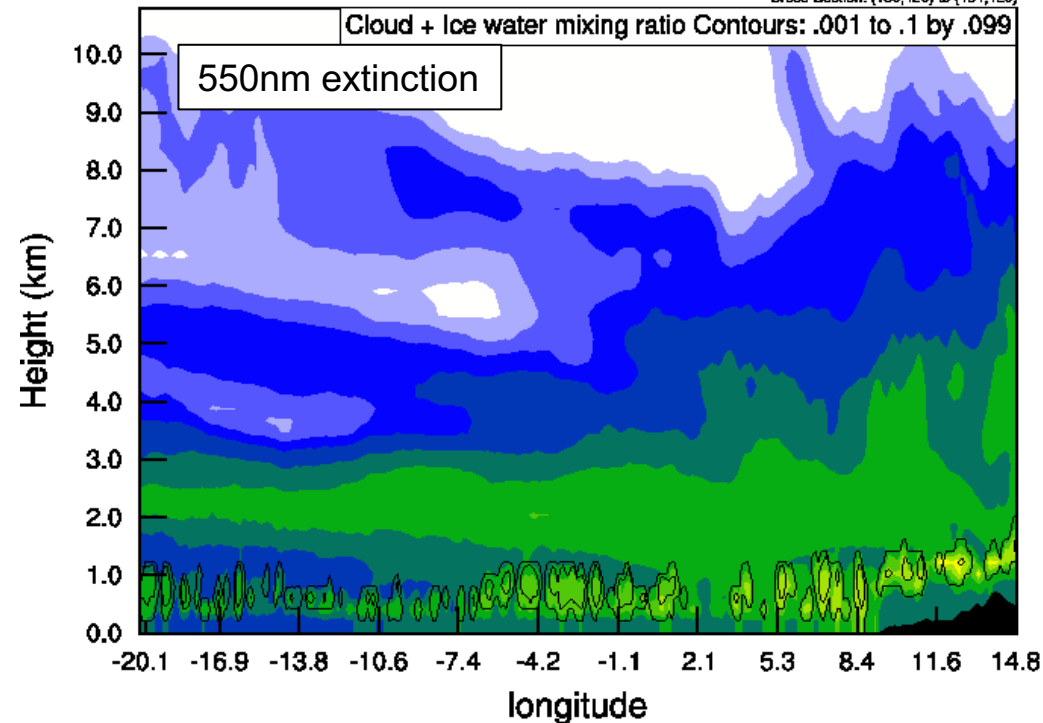


W-E at 0S

Init: 2017-08-28 00:00:00
Valid: 2017-08-02_12:00:00

550nm Extinction (1/Mm)
Cloud + ice water mixing ratio (g/kg)
Main

Cross-Section: (130,420) to (454,420)





Cross sections – Equator

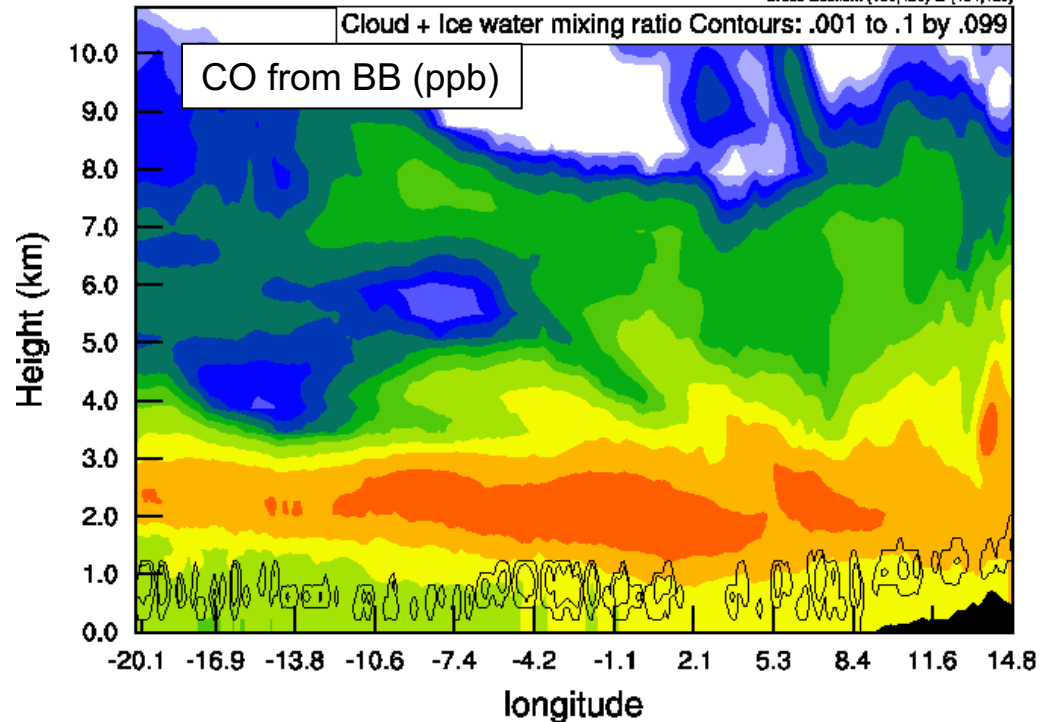
Sat, 2 Sep 12Z

W-E at 0S

Init: 2017-08-28 00:00:00
Valid: 2017-09-02 12:00:00

CO biomass burning (ppb)
Cloud + ice water mixing ratio (g/kg)
Main

Cross-Section: (130,420) to (454,420)

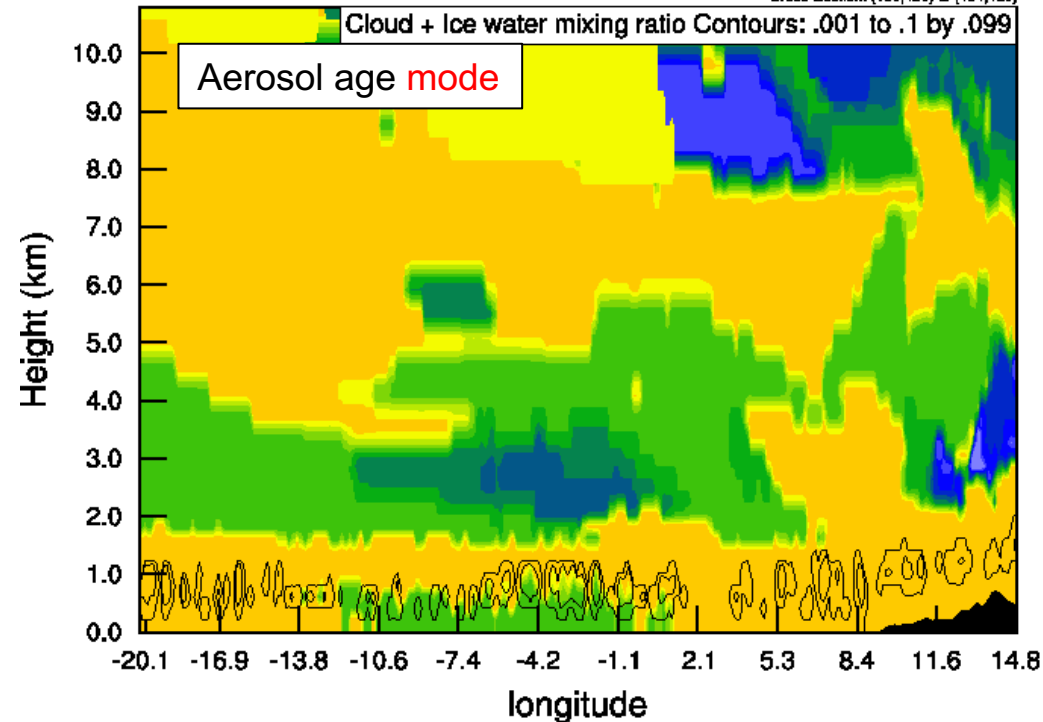


W-E at 0S

Init: 2017-08-28 00:00:00
Valid: 2017-09-02 12:00:00

Biomass burning Age Distribution Mode (days)
Cloud + ice water mixing ratio (g/kg)
Main

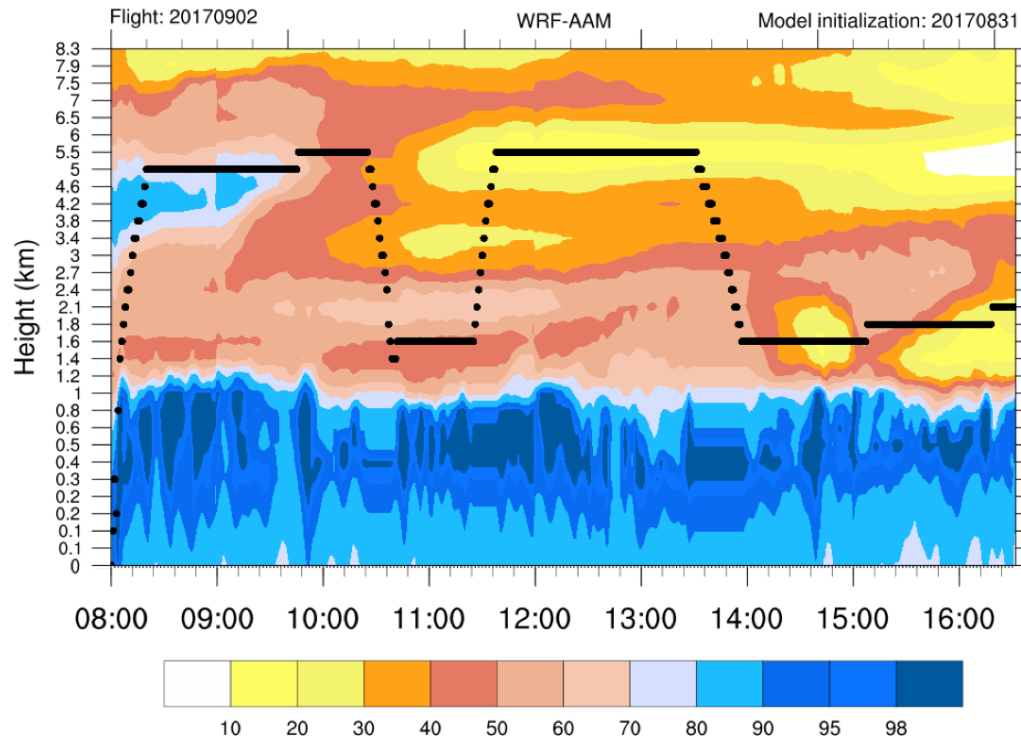
Cross-Section: (130,420) to (454,420)



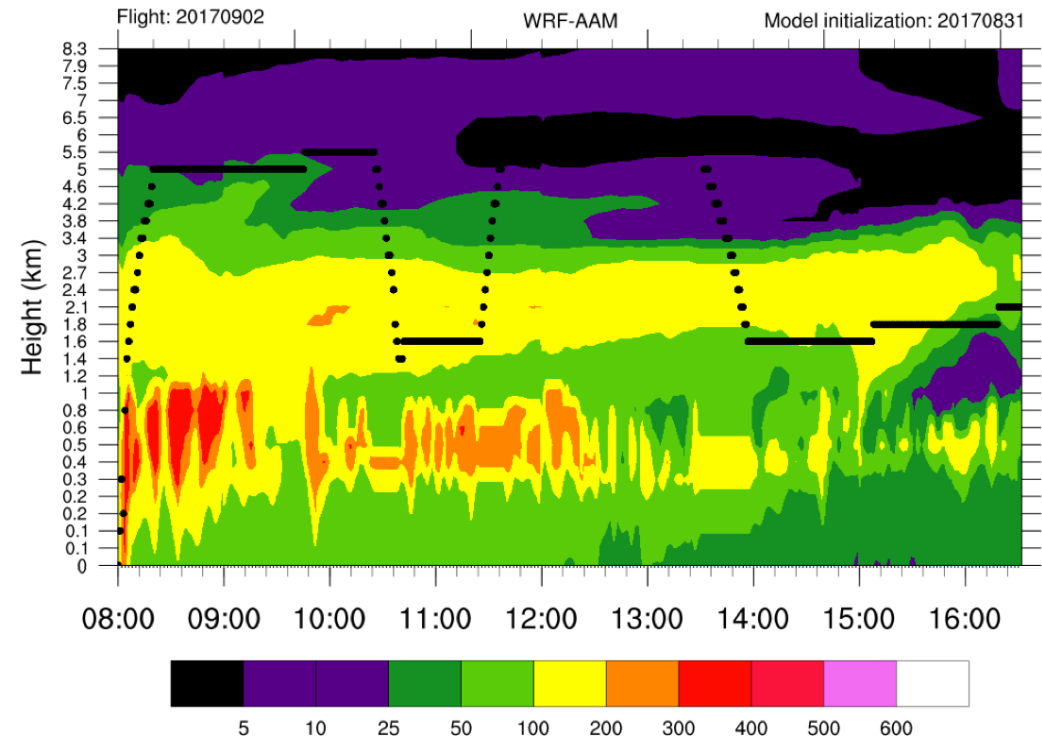
Along flight track curtains: North option

Sat, 2 Sep

Relative Humidity (%)



550nm Aerosol Extinction (1/Mm)

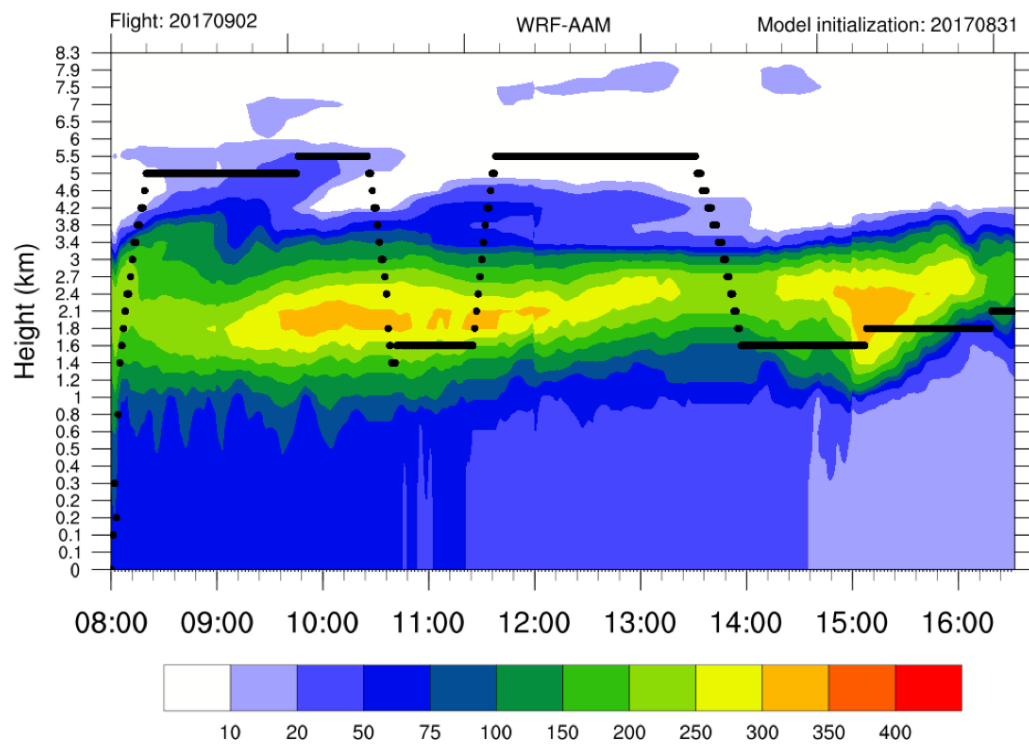




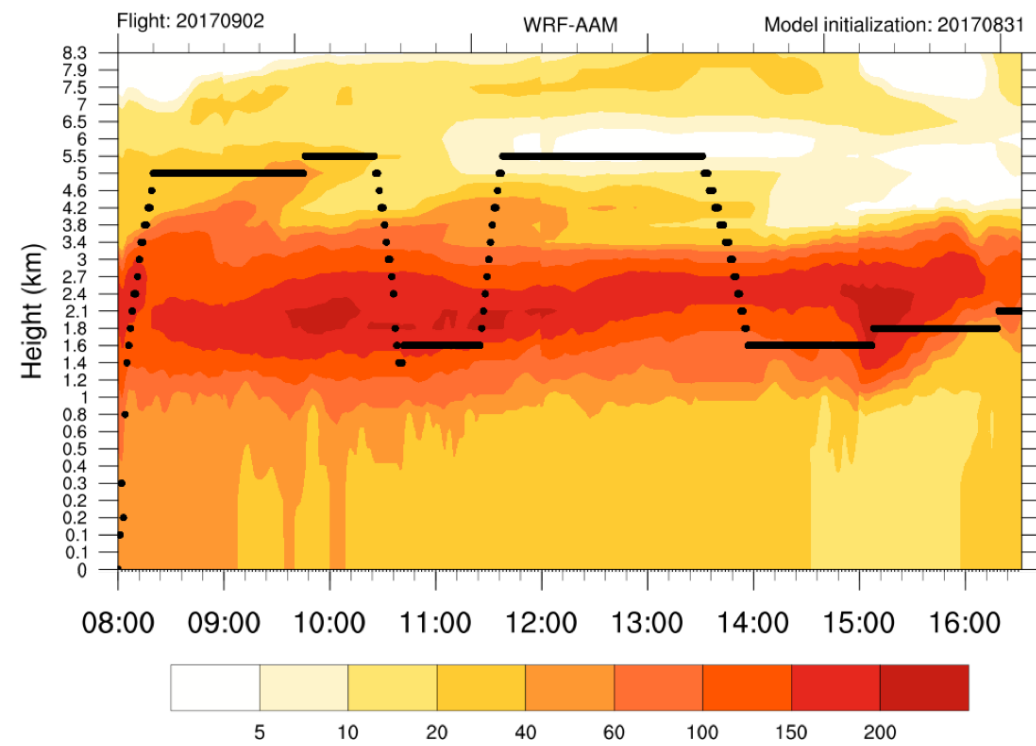
Along flight track curtains: North option

Sat, 2 Sep

CO from Biomass Burning (ppb)

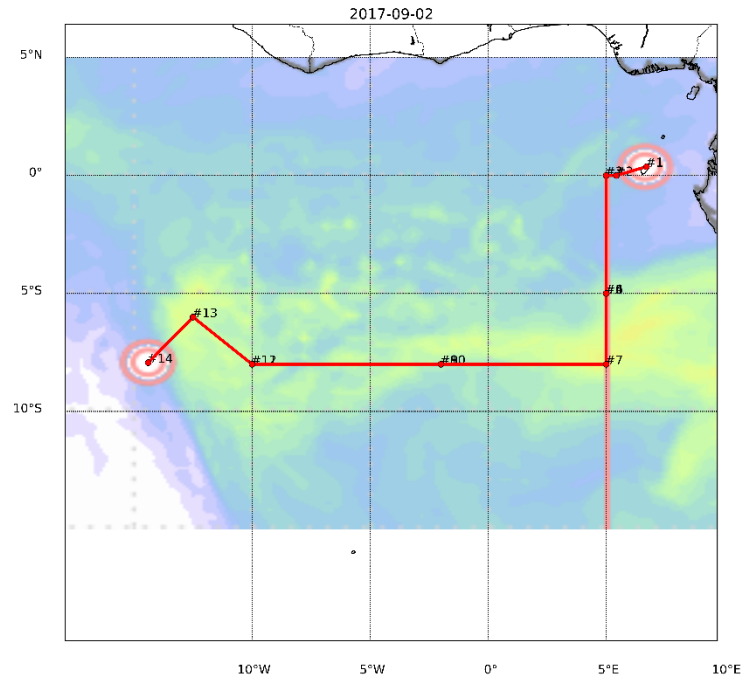


PM 2.5 (ug/kg)





ORACLES ESPO
NASA



Saturday, 2 September 2017

Transit flight to Ascension Island – Potential South route



Cross sections – 8 S

Sat, 2 Sep 12 Z

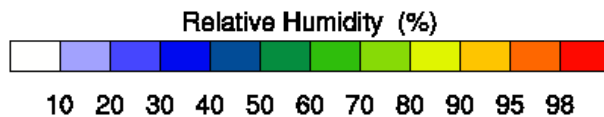
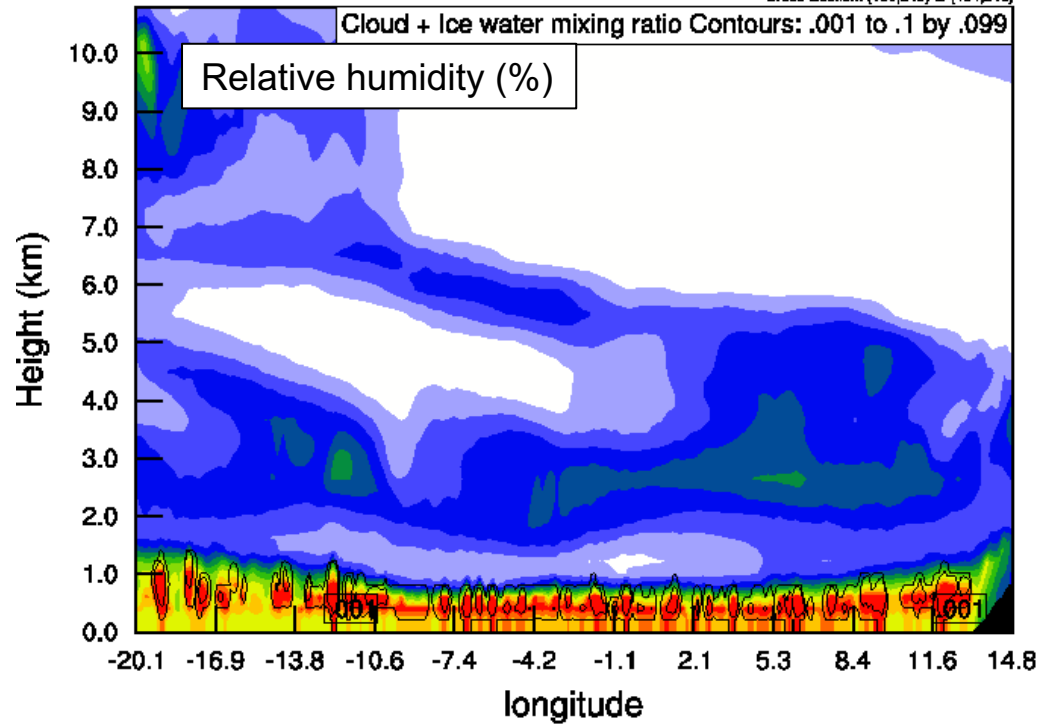
ORACLES ESPO NASA

W-E at 8S

Init: 2017-08-28 00:00:00
Valid: 2017-08-02_12:00:00

Relative Humidity (%)
Cloud + ice water mixing ratio (g/kg)
Main

Cross-Section: (130,348) to (454,246)

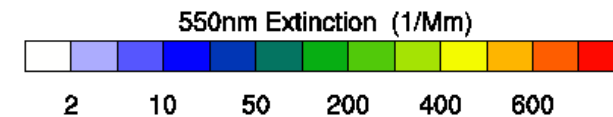
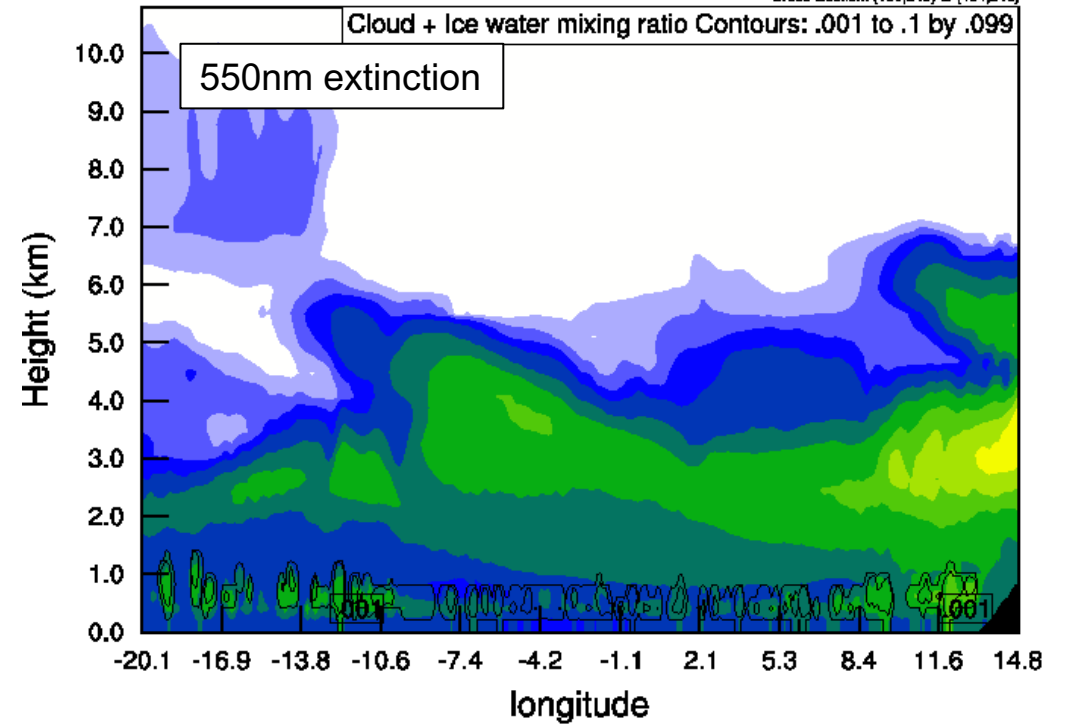


W-E at 8S

Init: 2017-08-28 00:00:00
Valid: 2017-08-02_12:00:00

550nm Extinction (1/Mm)
Cloud + ice water mixing ratio (g/kg)
Main

Cross-Section: (130,348) to (454,246)





Cross sections – 8 S

Sat, 2 Sep 12 Z

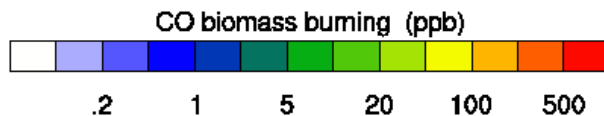
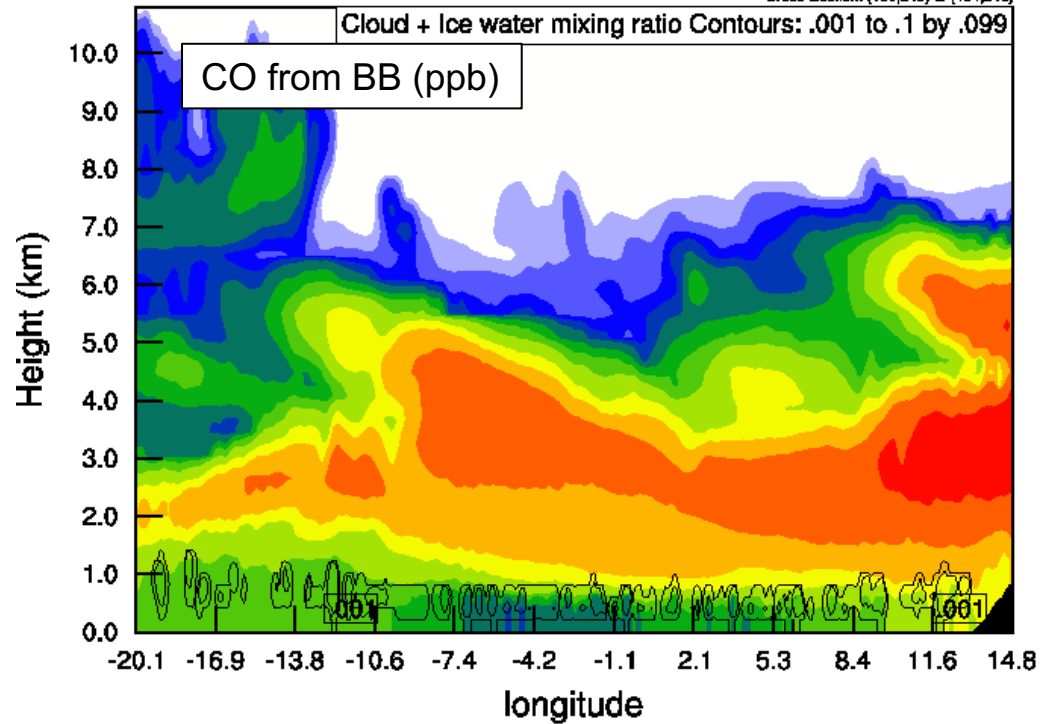
ORACLES ESPO

W-E at 8S

Init: 2017-08-28 00:00:00
Valid: 2017-08-02_12:00:00

CO biomass burning (ppb)
Cloud + ice water mixing ratio (g/kg)
Main

Cross-Section: (130,348) to (454,246)

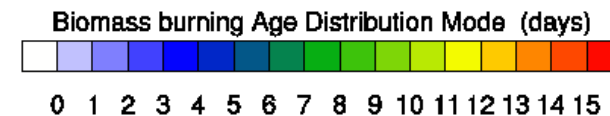
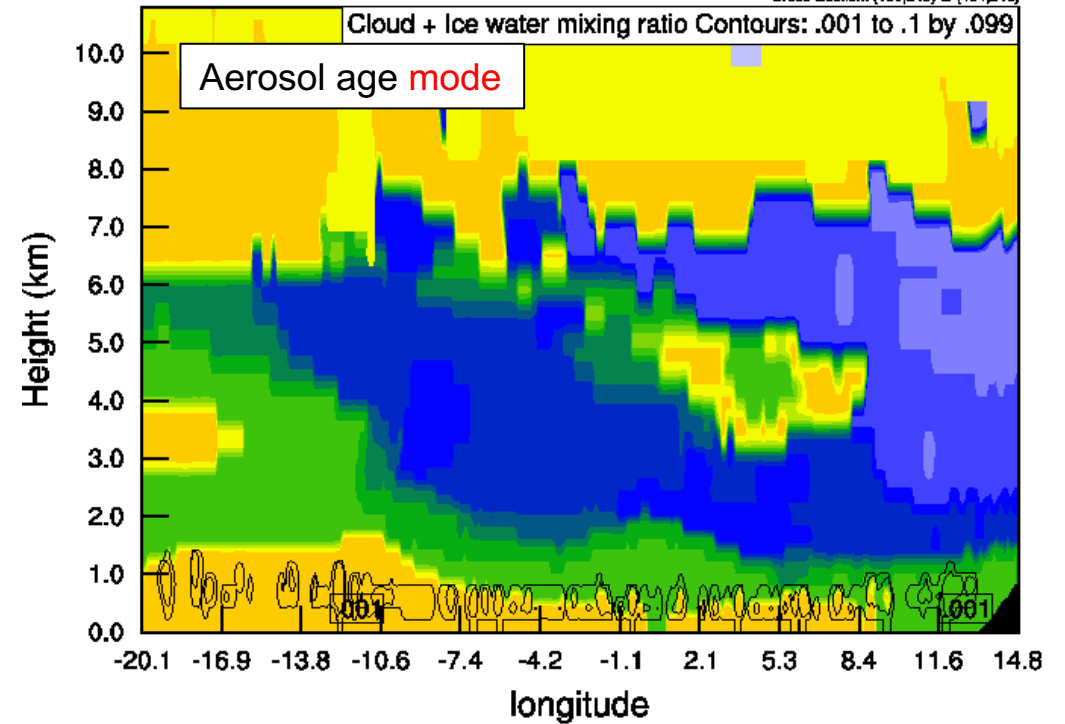


W-E at 8S

Init: 2017-08-28 00:00:00
Valid: 2017-08-02_12:00:00

Biomass burning Age Distribution Mode (days)
Cloud + ice water mixing ratio (g/kg)
Main

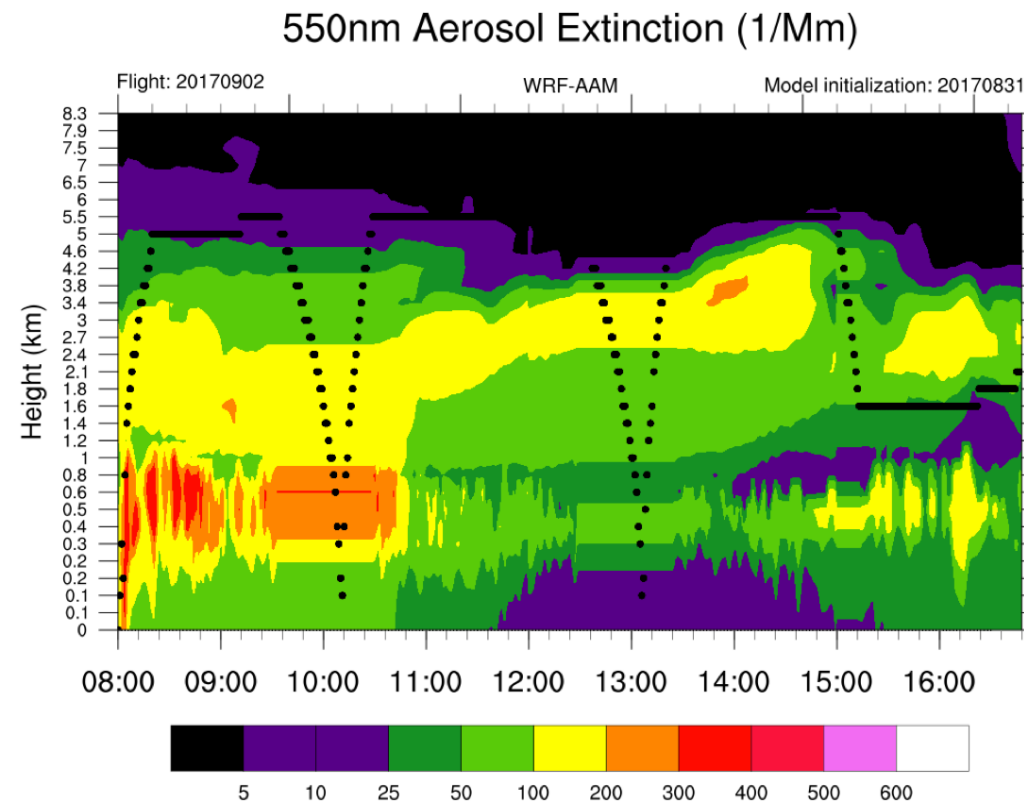
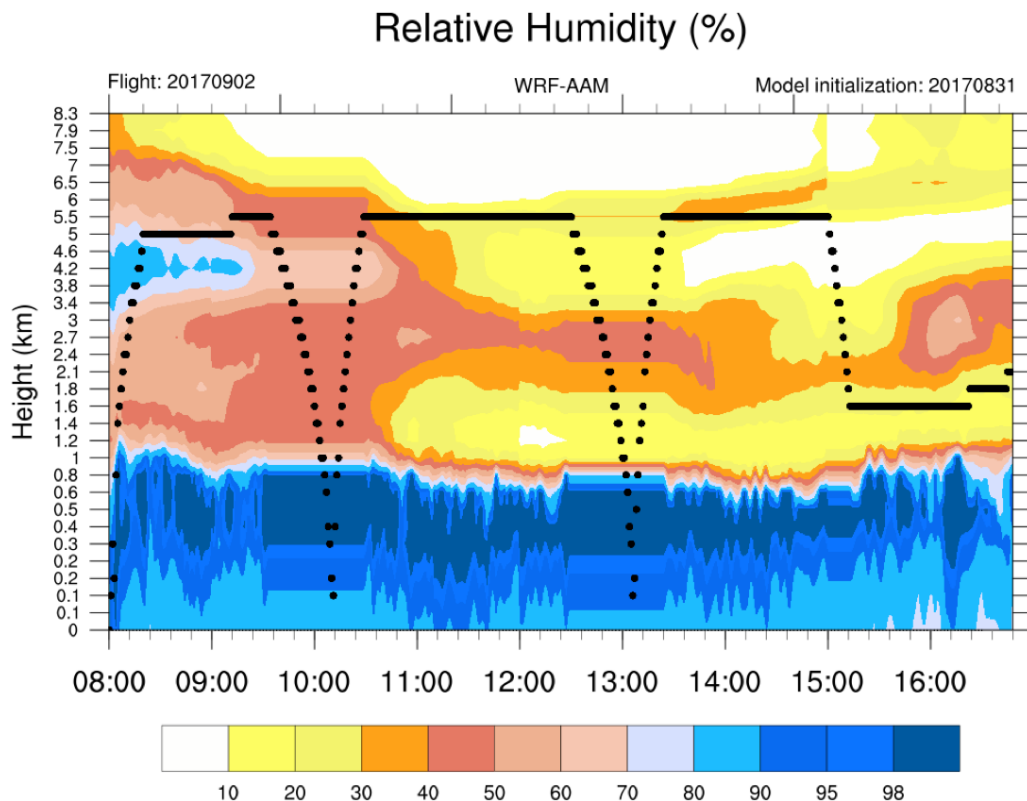
Cross-Section: (130,348) to (454,246)





Along flight track curtains: South option

Sat, 2 Sep





Along flight track curtains: South option

Sat, 2 Sep

