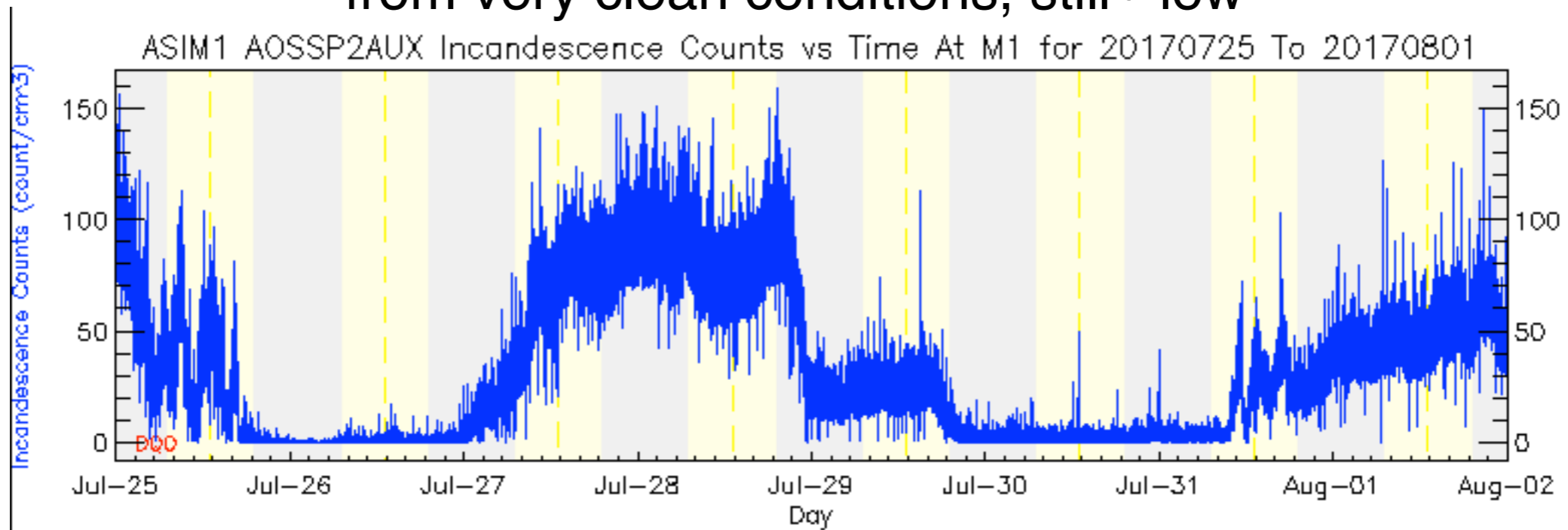
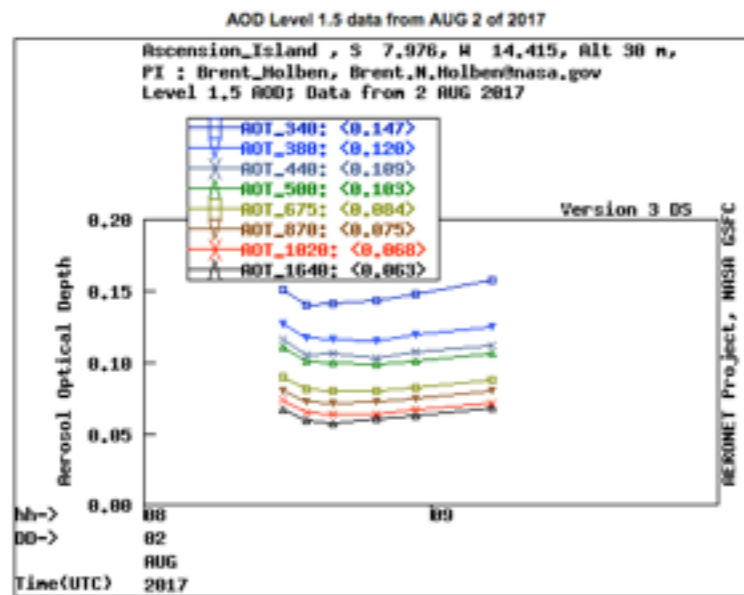


# aerosol conditions at Ascension

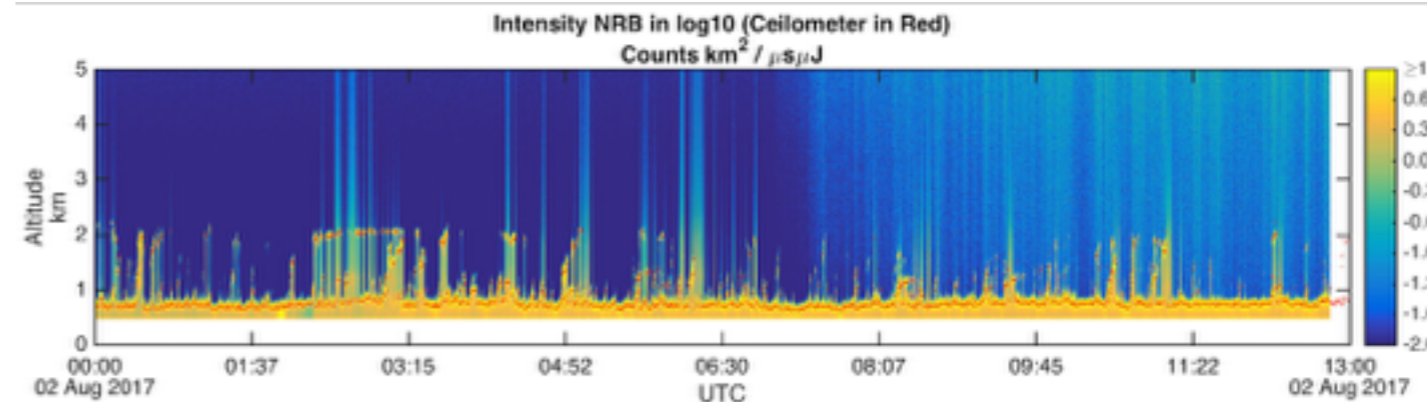
near surface black carbon loadings increasing  
from very clean conditions, still ~low



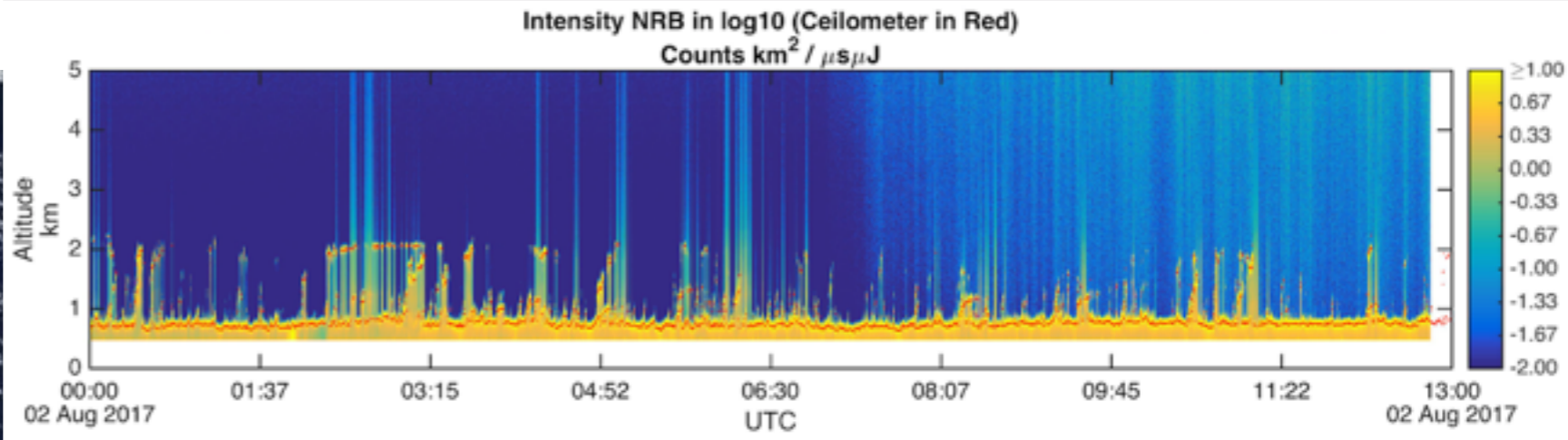
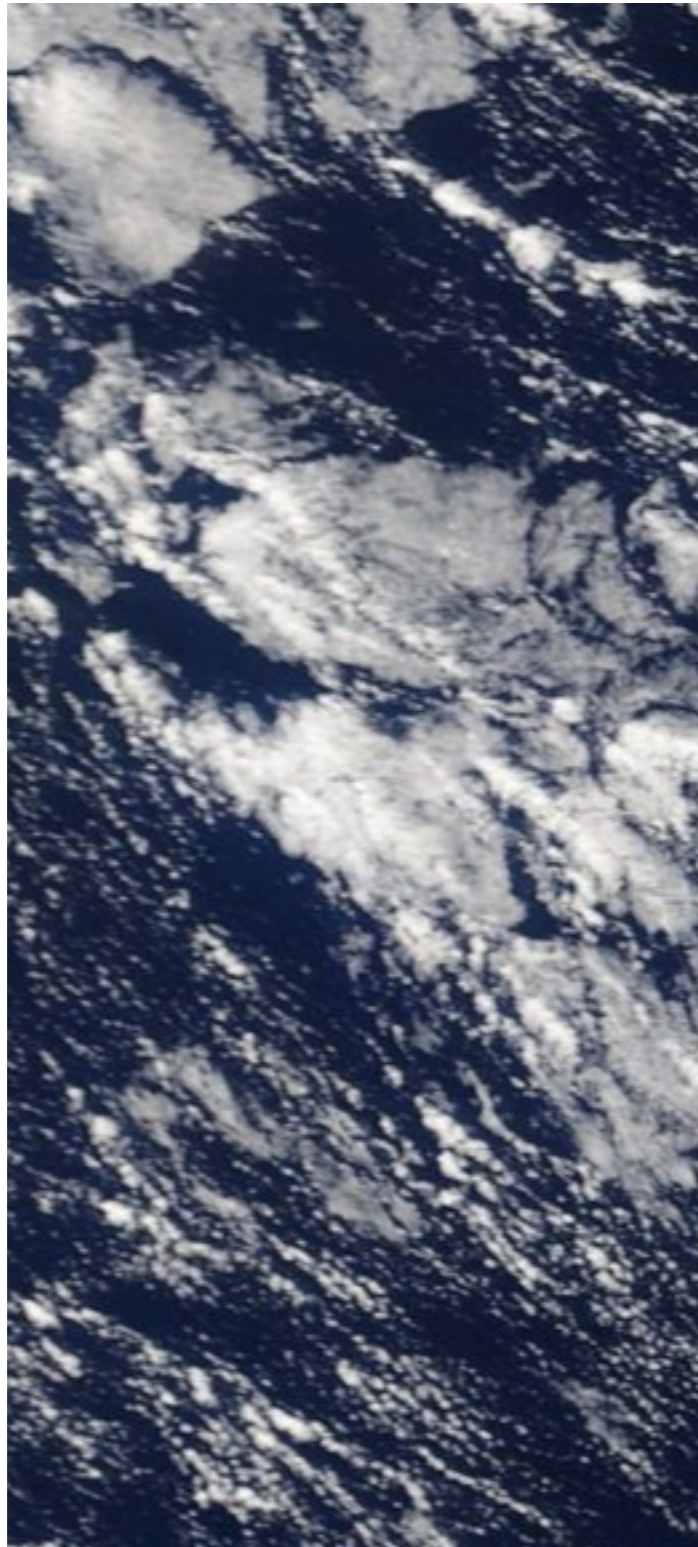
total column  
AOD ~0.1 @500nm



some boundary layer aerosol  
between 1-2 km and above

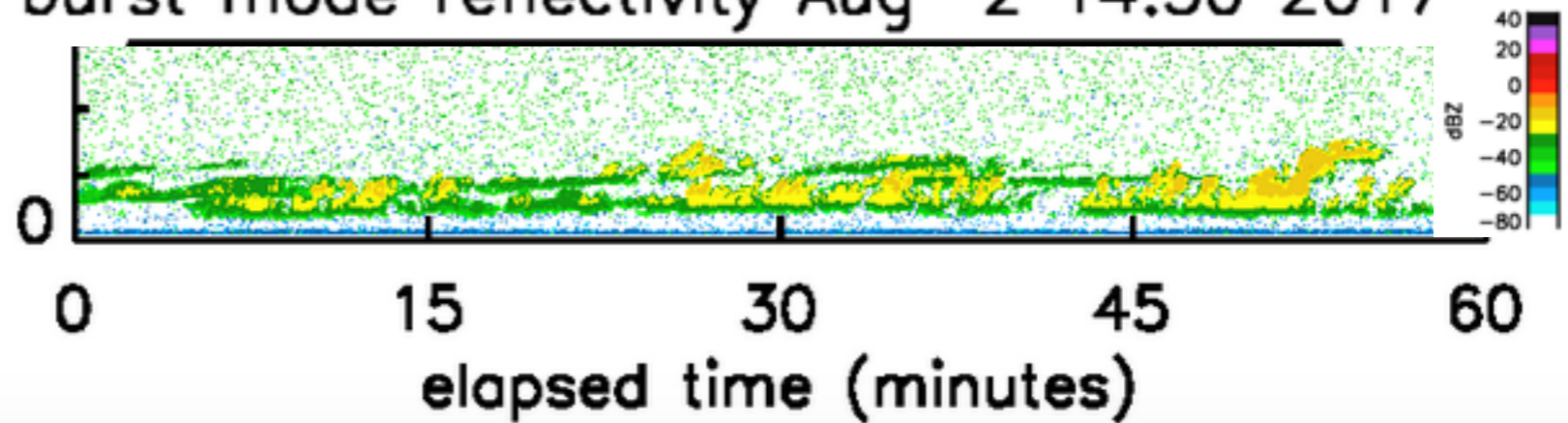






deep BL ( $\sim 2\text{km}$ )  
clouds organized  
along wind  
direction

burst mode reflectivity Aug 2 14:30 2017





# most recent Ascension sounding

