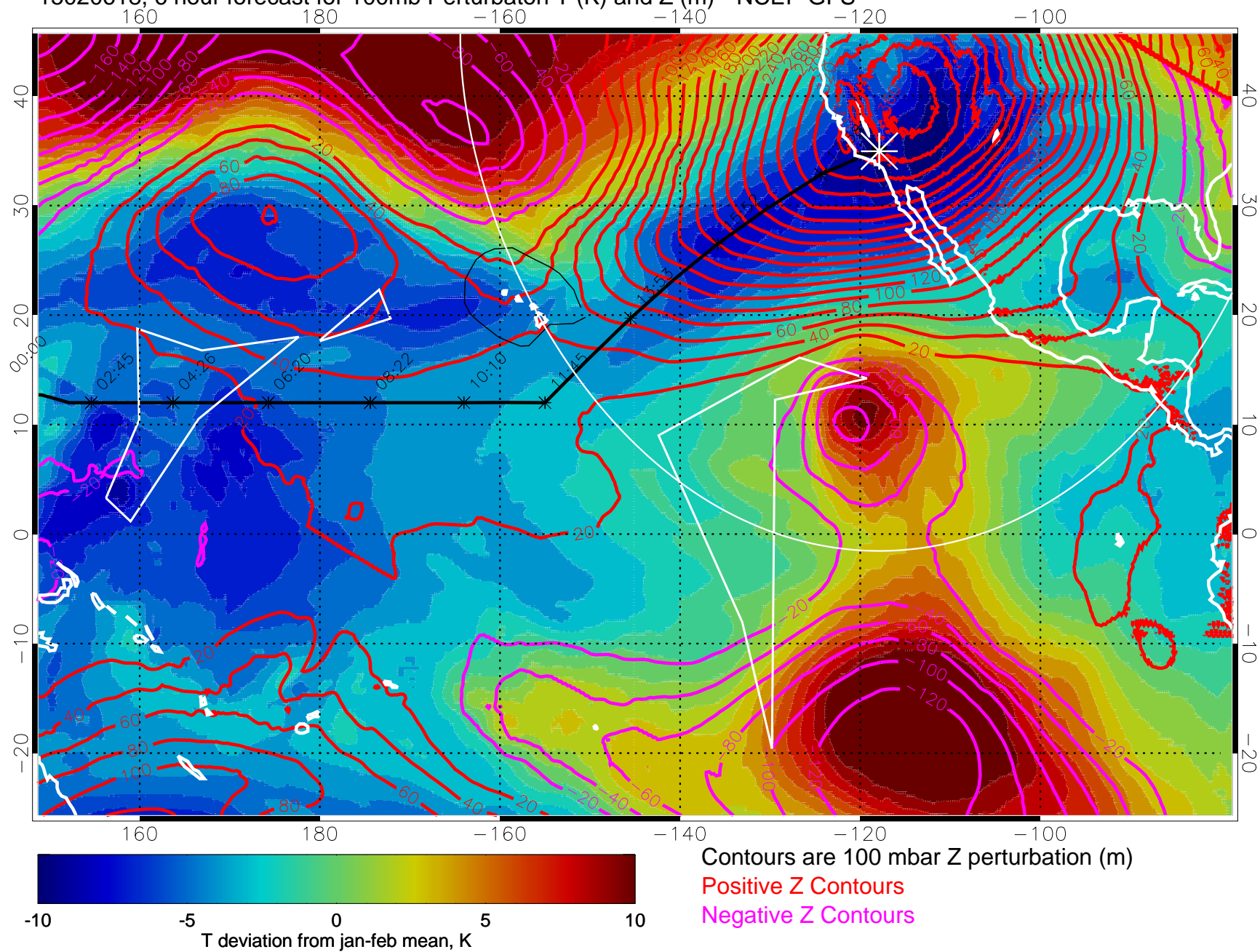
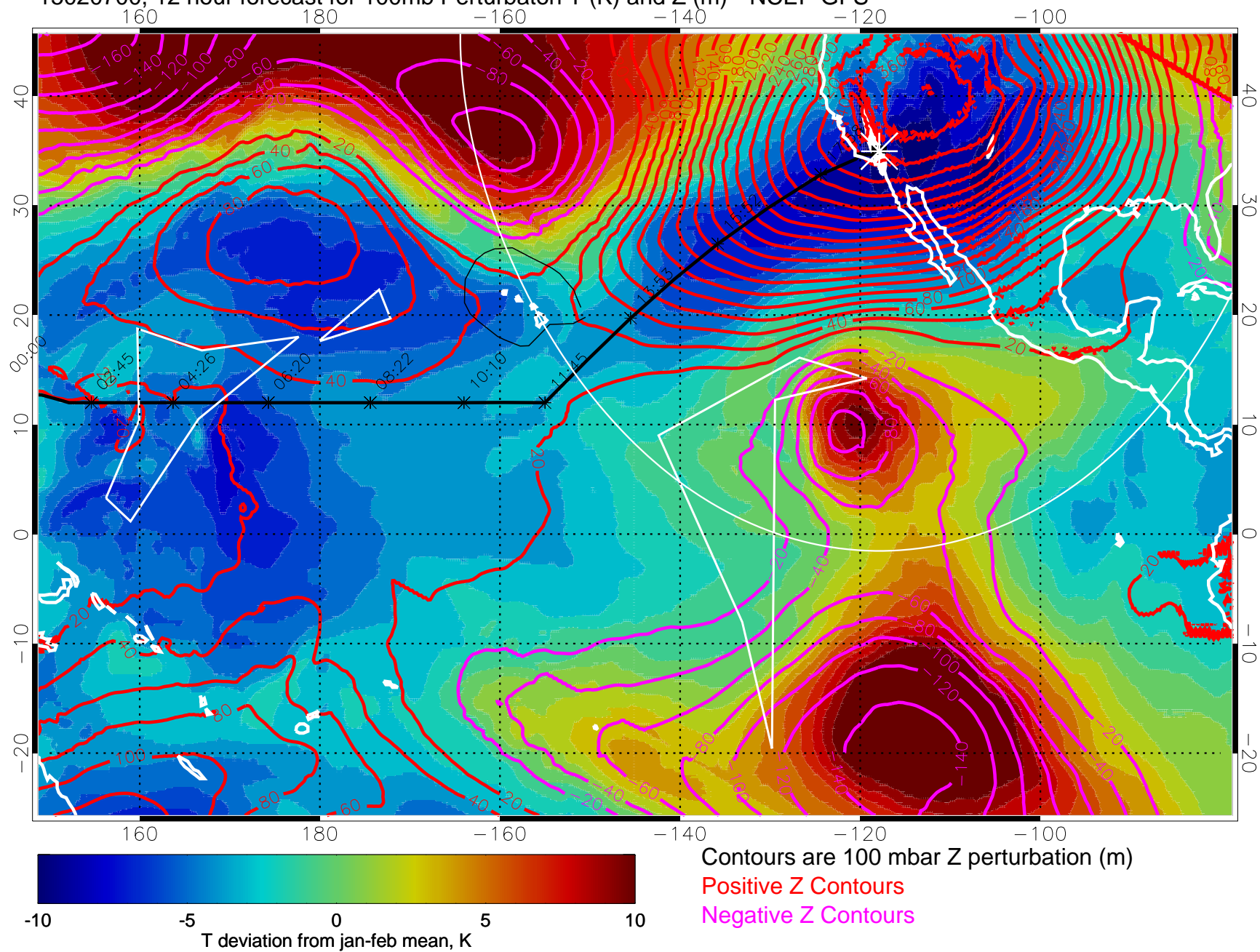


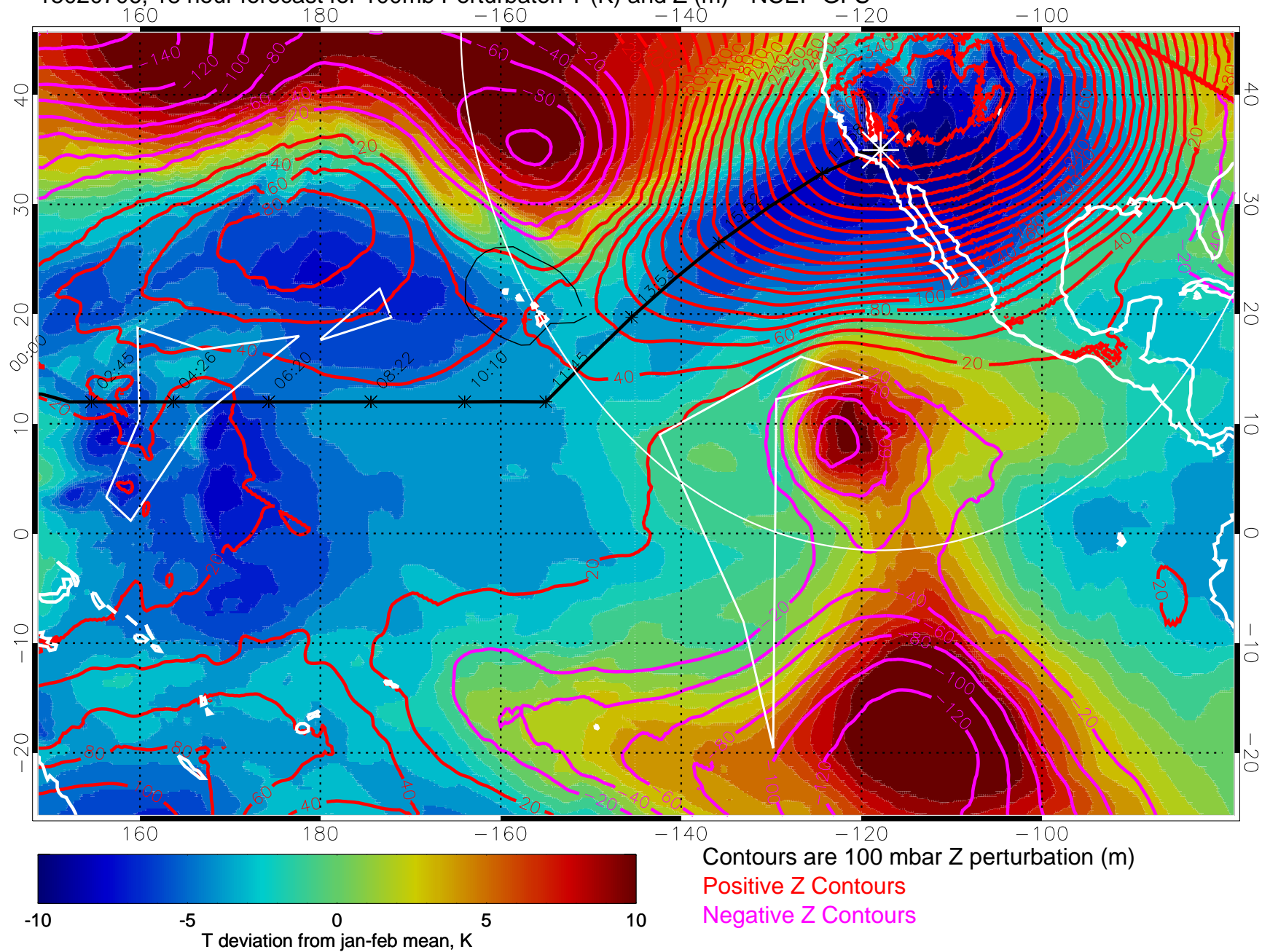
15020618, 6 hour forecast for 100mb Perturbaton T (K) and Z (m)-- NCEP GFS



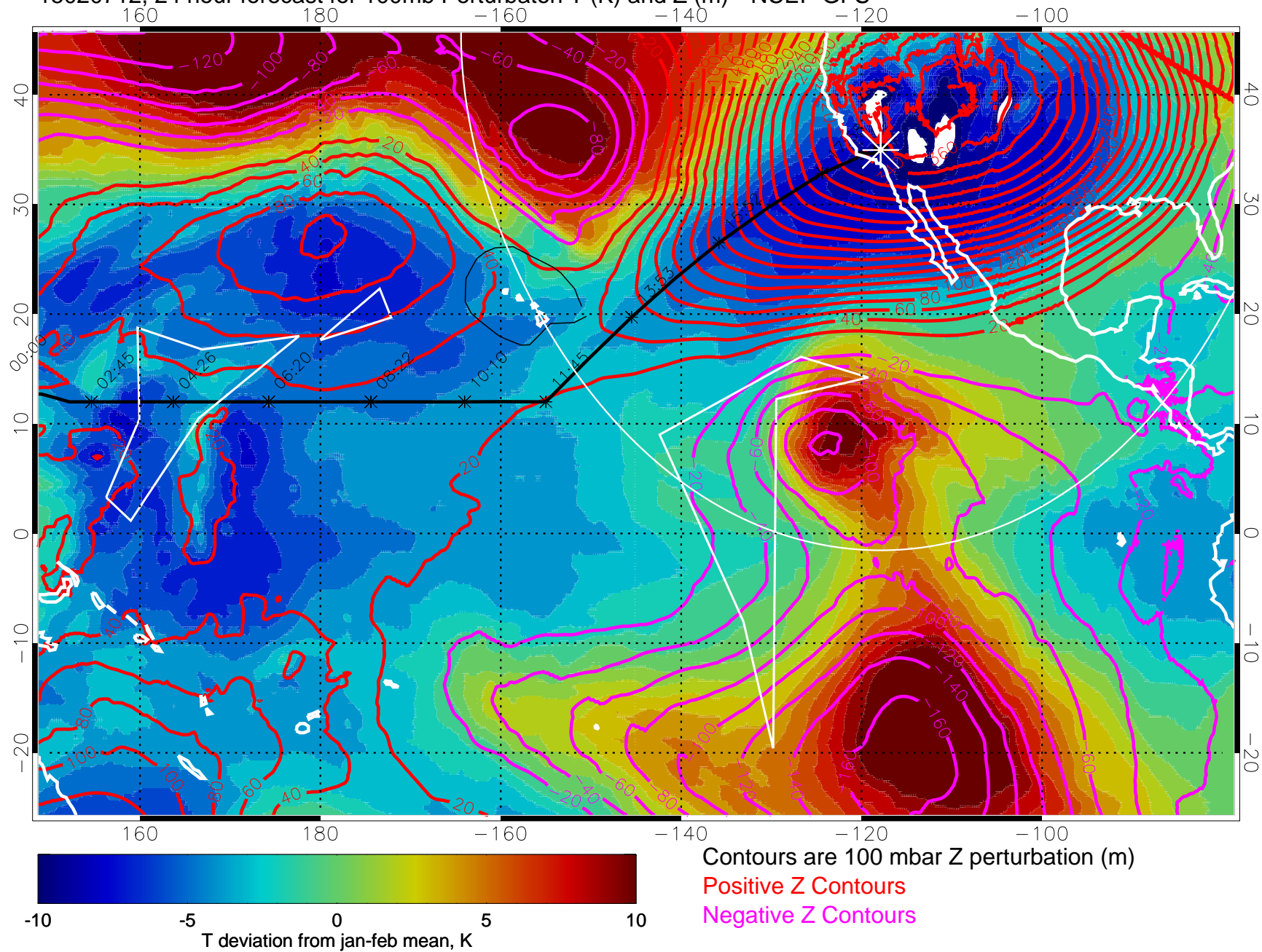
15020700, 12 hour forecast for 100mb Perturbaton T (K) and Z (m)-- NCEP GFS



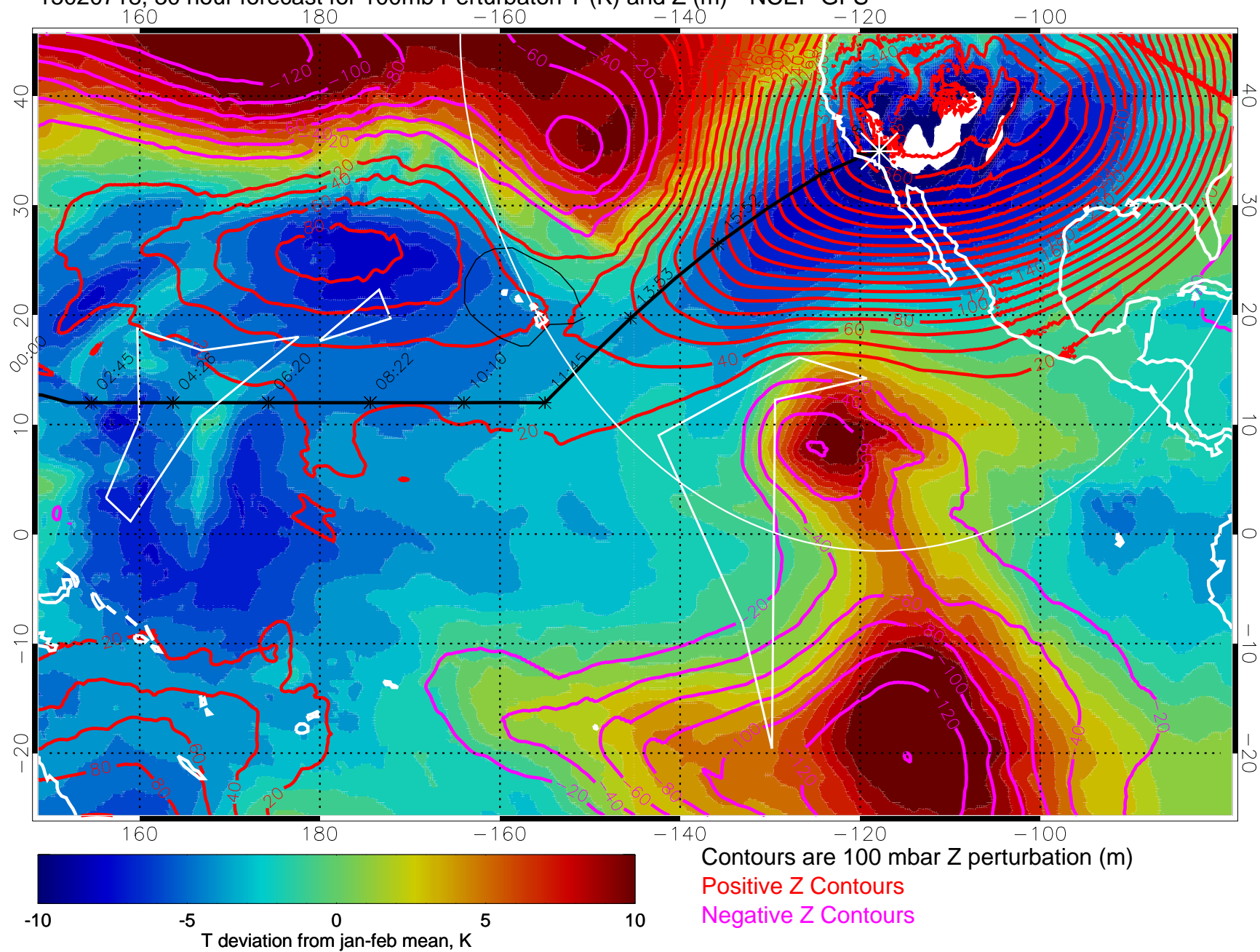
15020706, 18 hour forecast for 100mb Perturbaton T (K) and Z (m)-- NCEP GFS



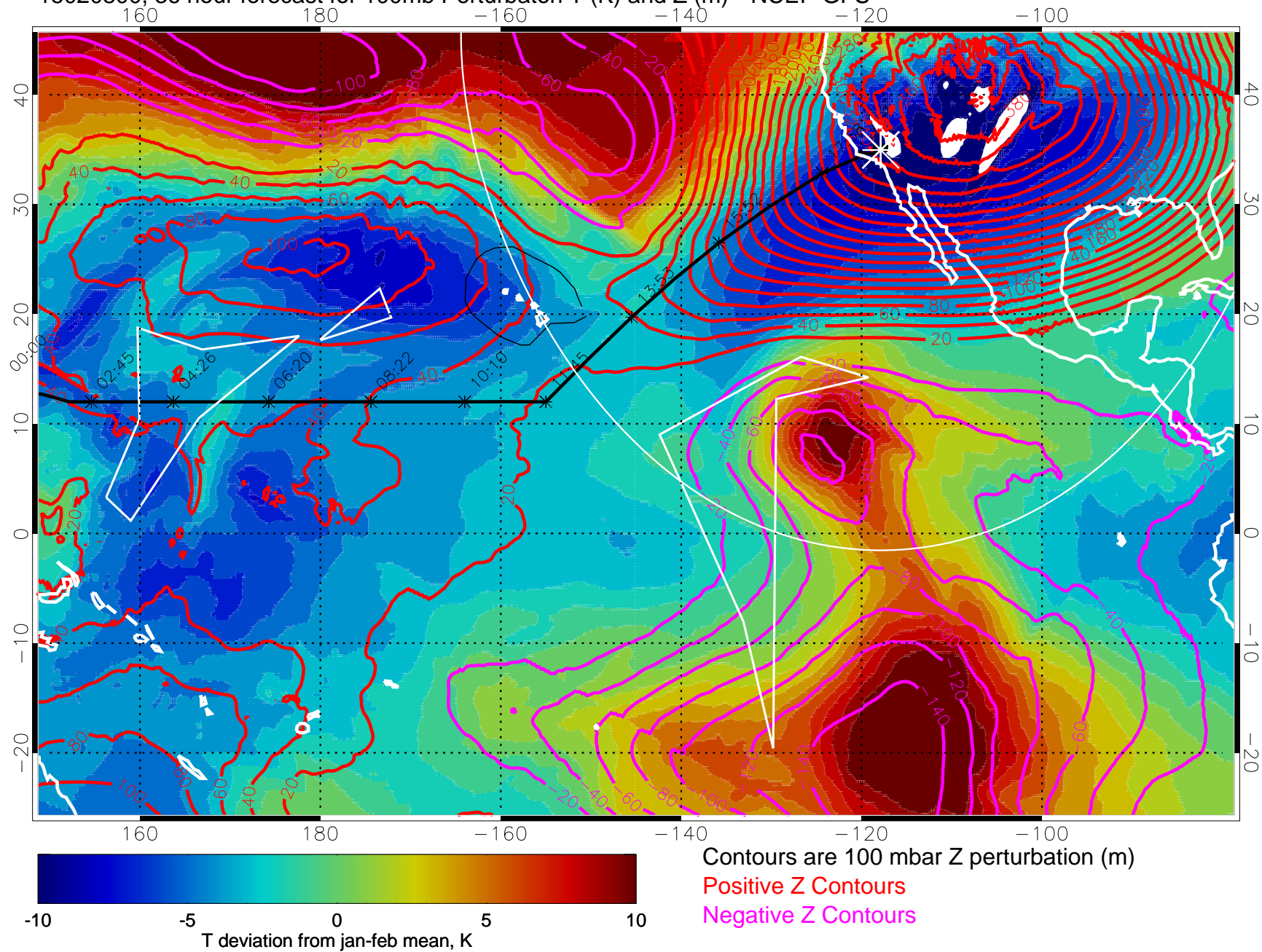
15020712, 24 hour forecast for 100mb Perturbaton T (K) and Z (m)-- NCEP GFS



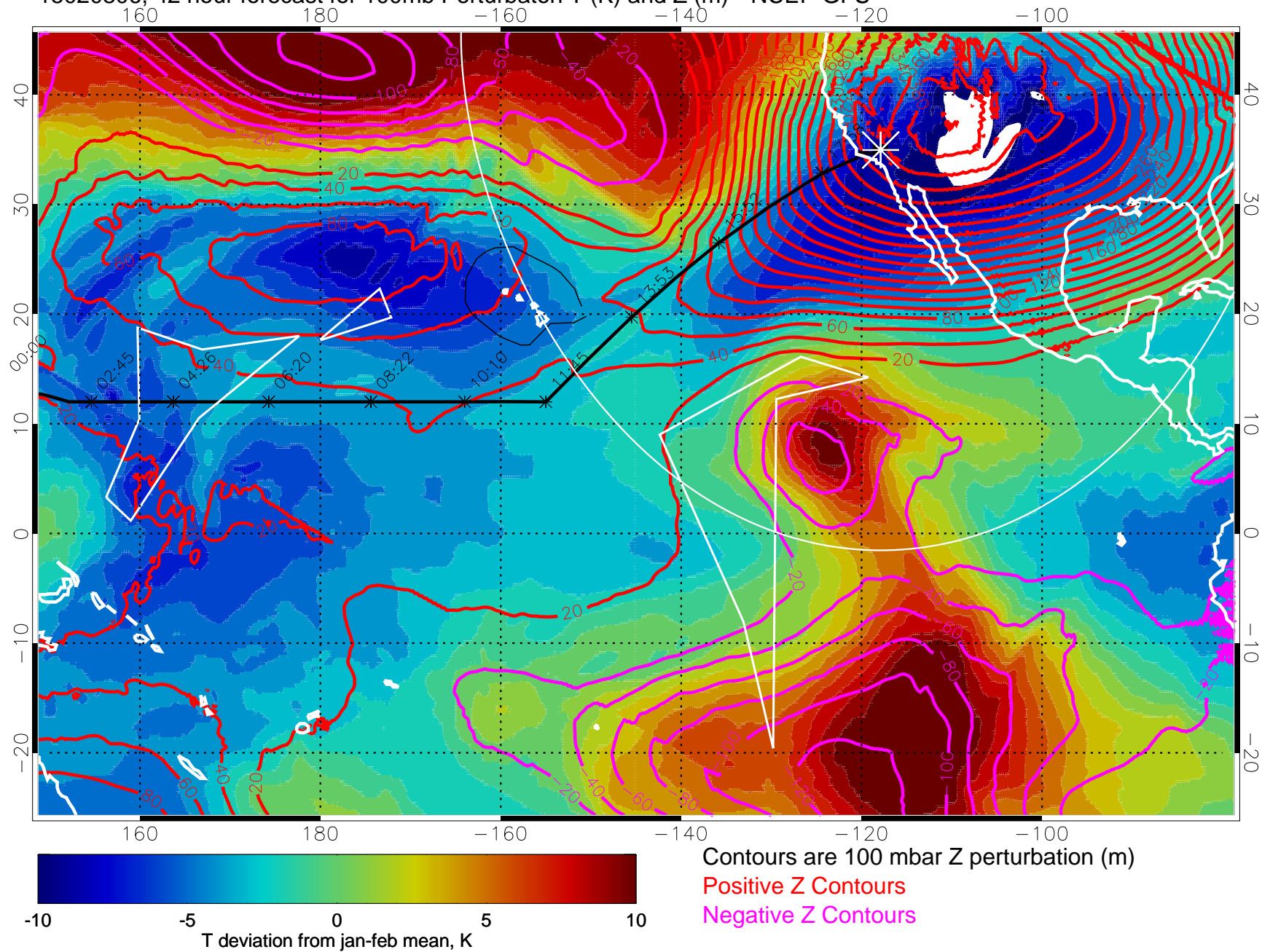
15020718, 30 hour forecast for 100mb Perturbation T (K) and Z (m)-- NCEP GFS



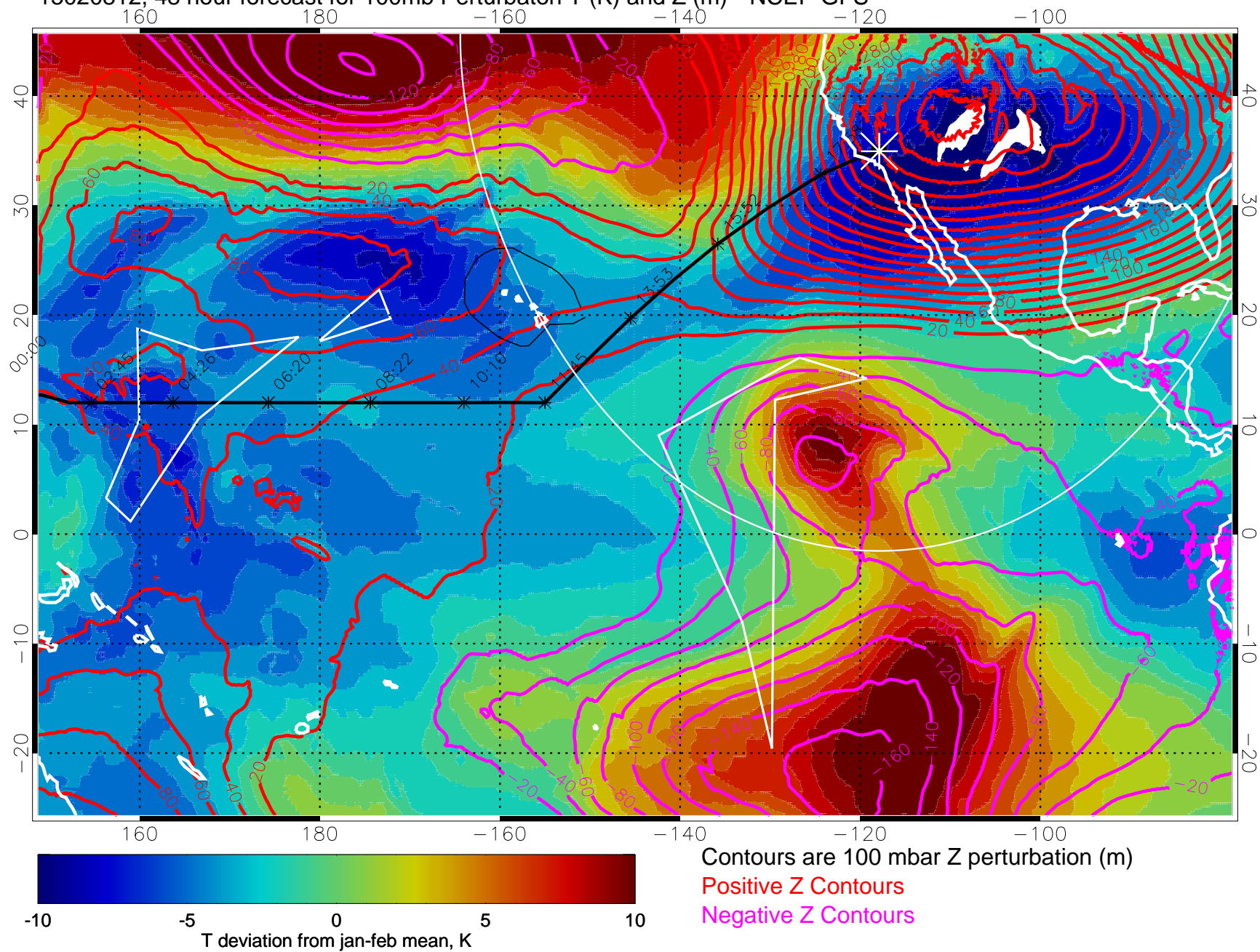
15020800, 36 hour forecast for 100mb Perturbaton T (K) and Z (m)-- NCEP GFS



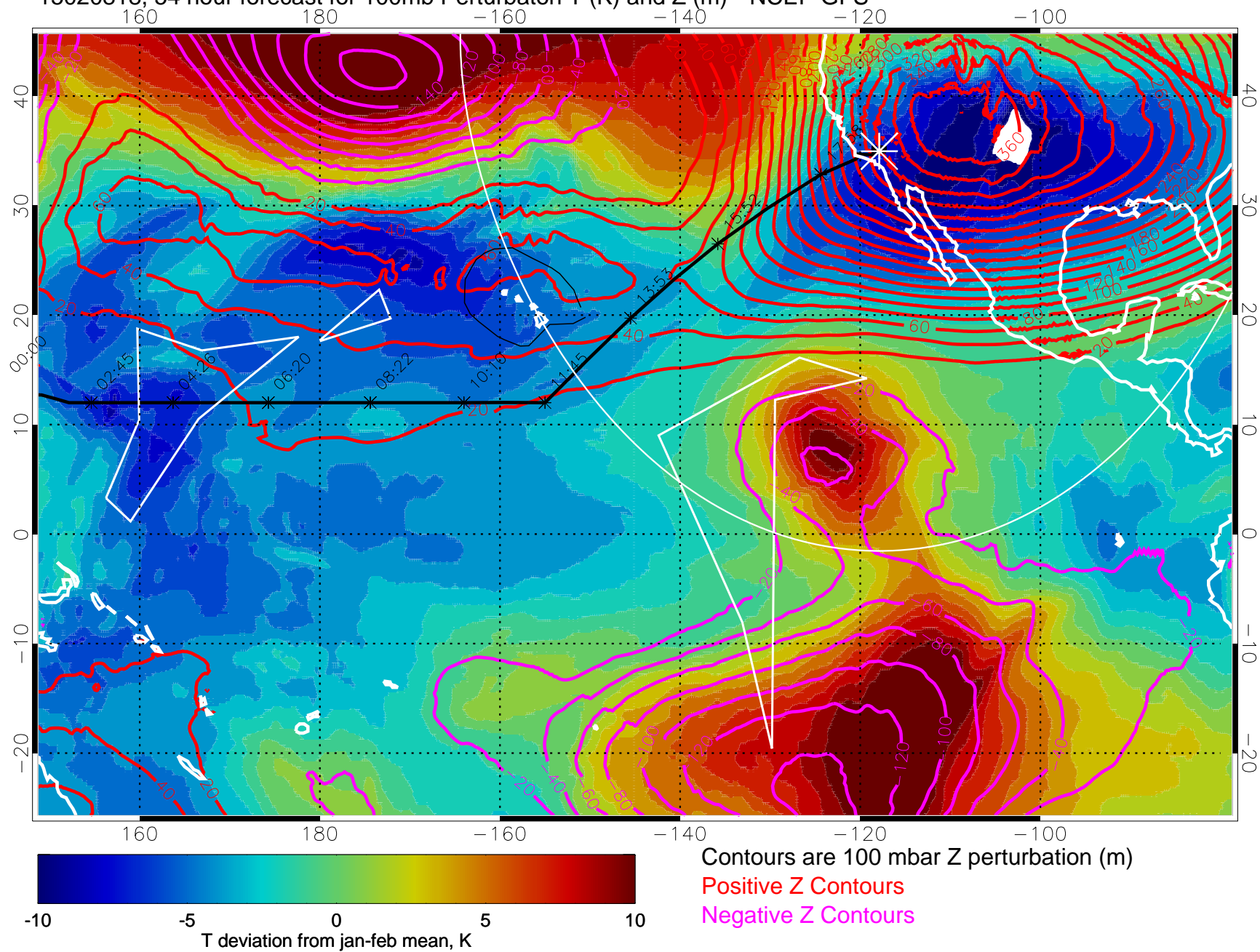
15020806, 42 hour forecast for 100mb Perturbaton T (K) and Z (m)-- NCEP GFS



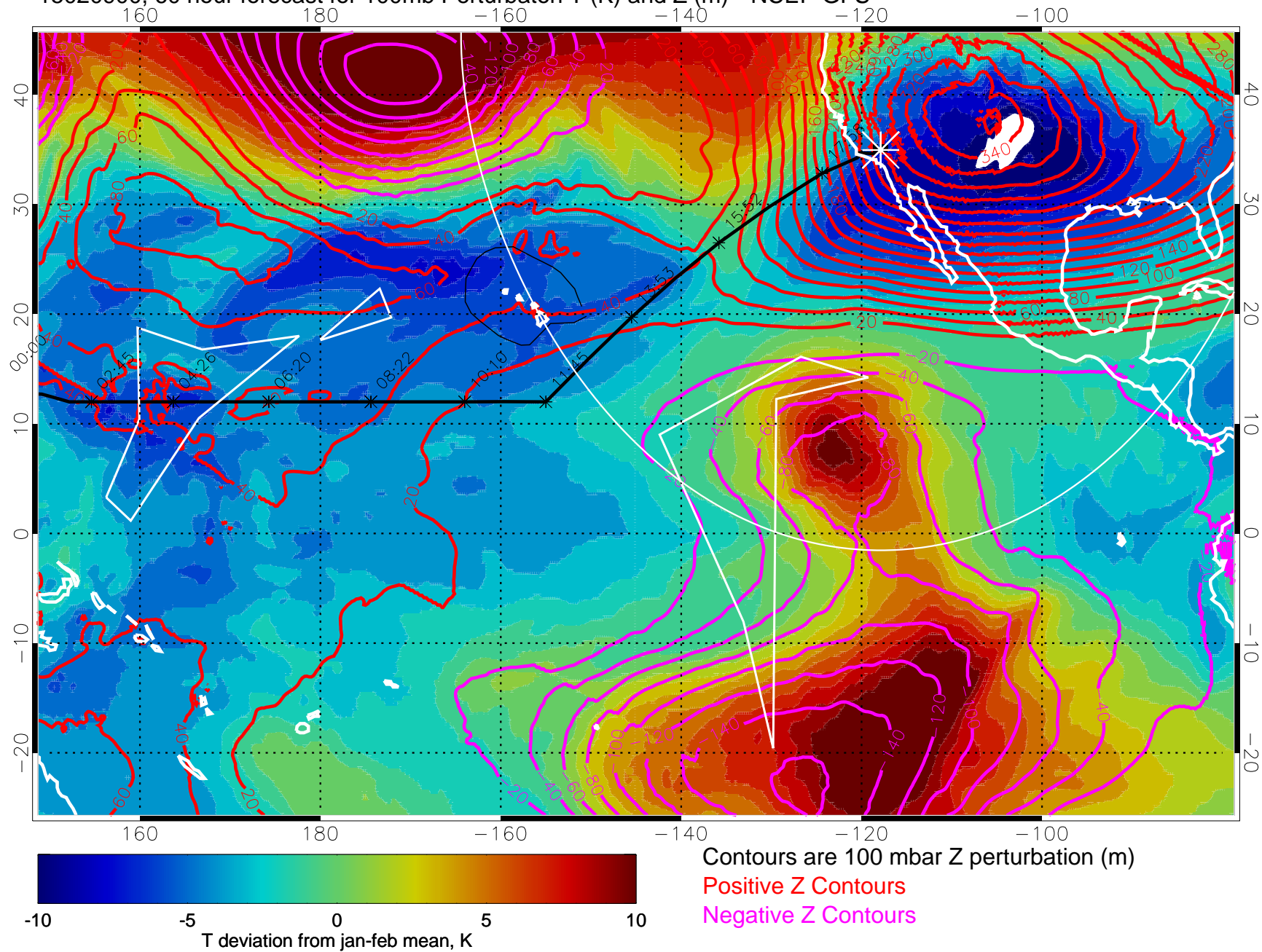
15020812, 48 hour forecast for 100mb Perturbaton T (K) and Z (m)-- NCEP GFS



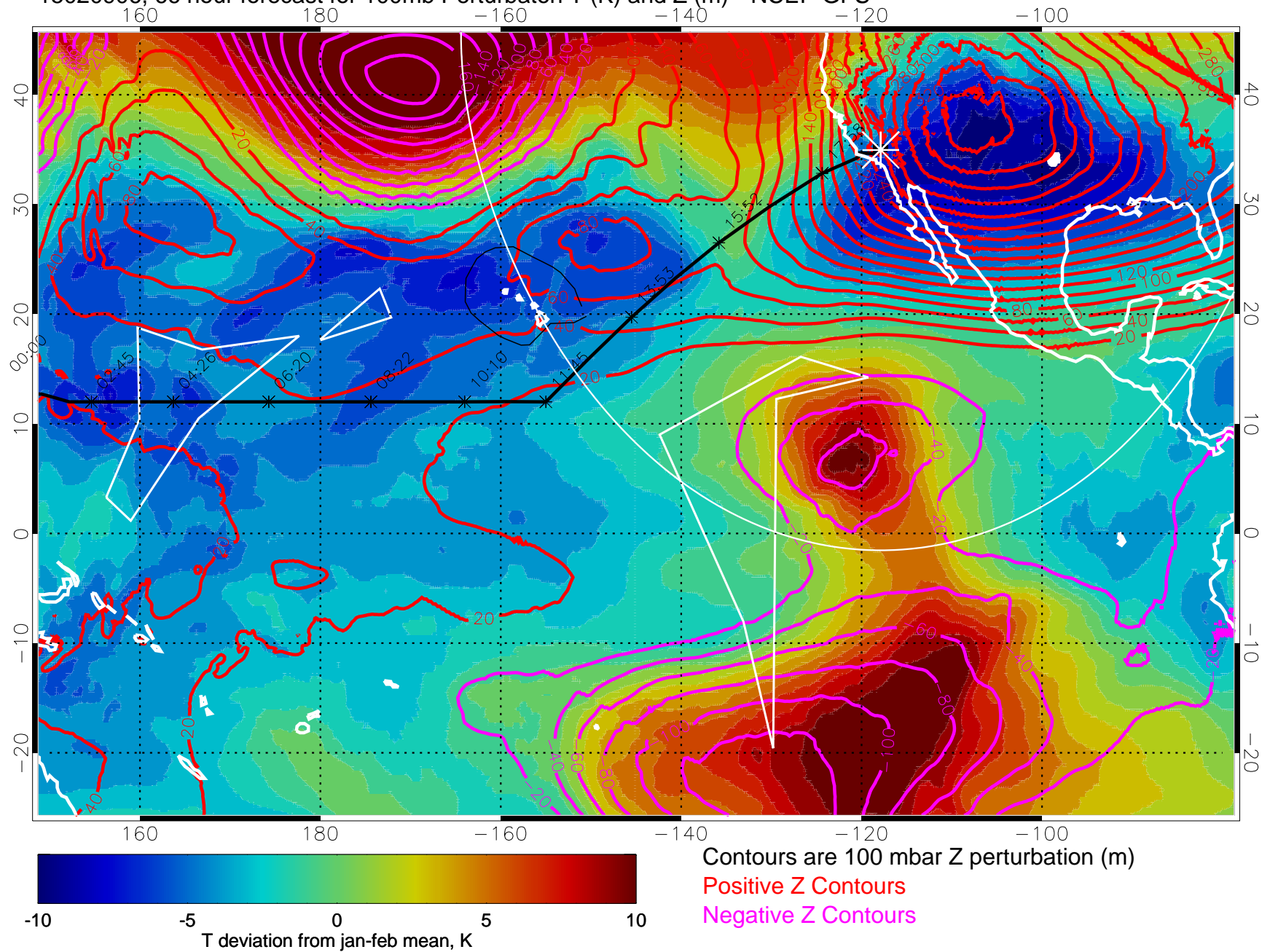
15020818, 54 hour forecast for 100mb Perturbation T (K) and Z (m)-- NCEP GFS



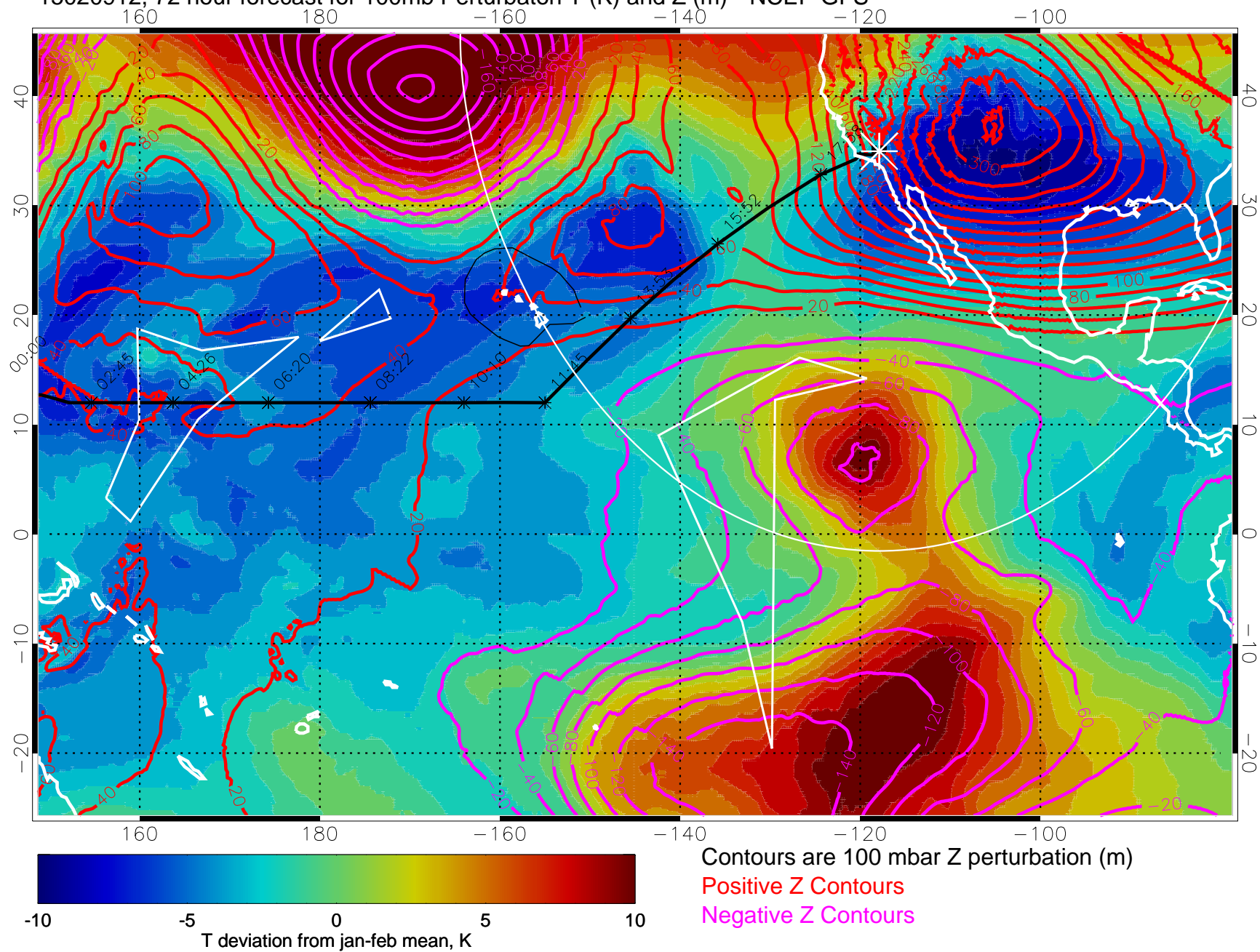
15020900, 60 hour forecast for 100mb Perturbation T (K) and Z (m)-- NCEP GFS



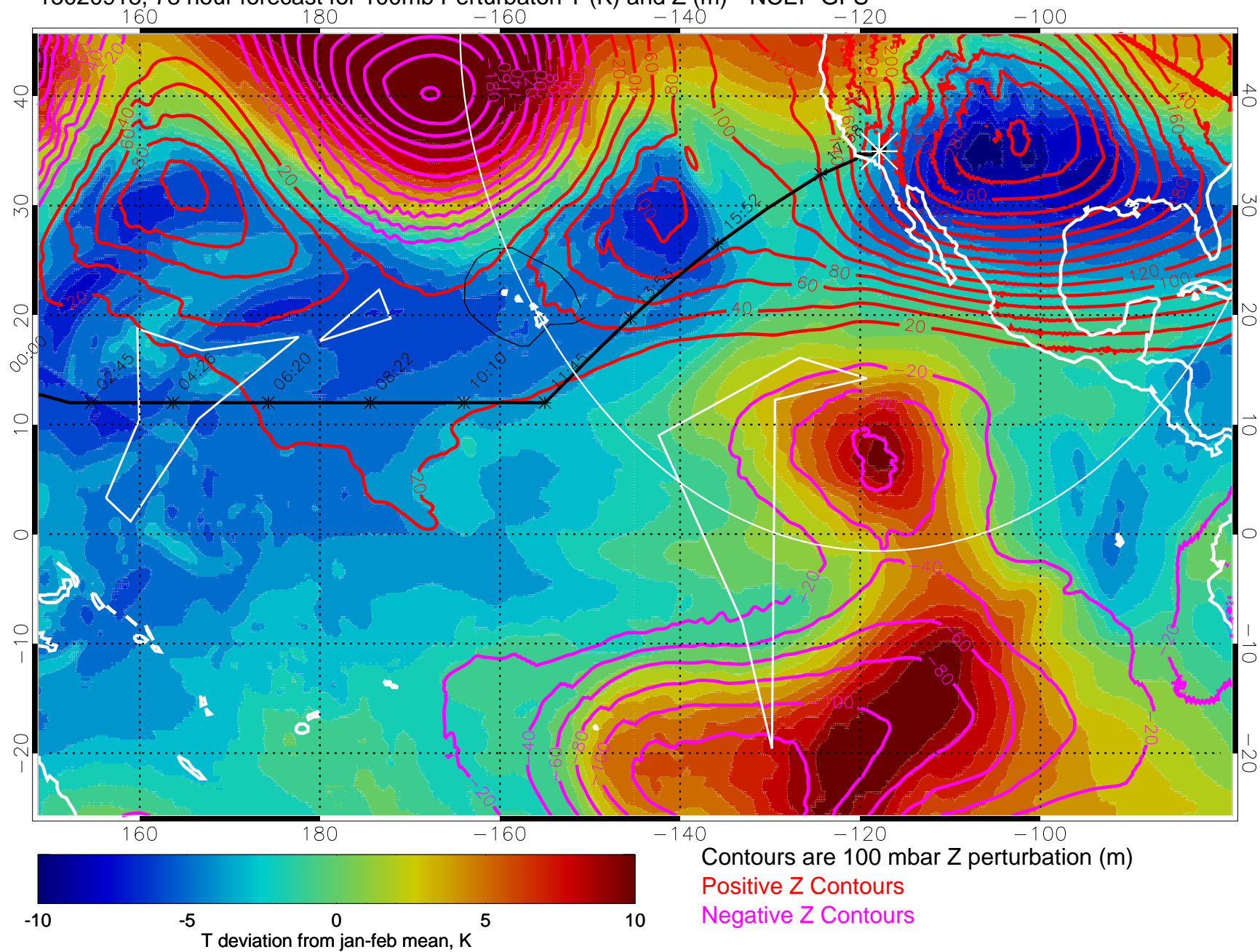
15020906, 66 hour forecast for 100mb Perturbaton T (K) and Z (m)-- NCEP GFS



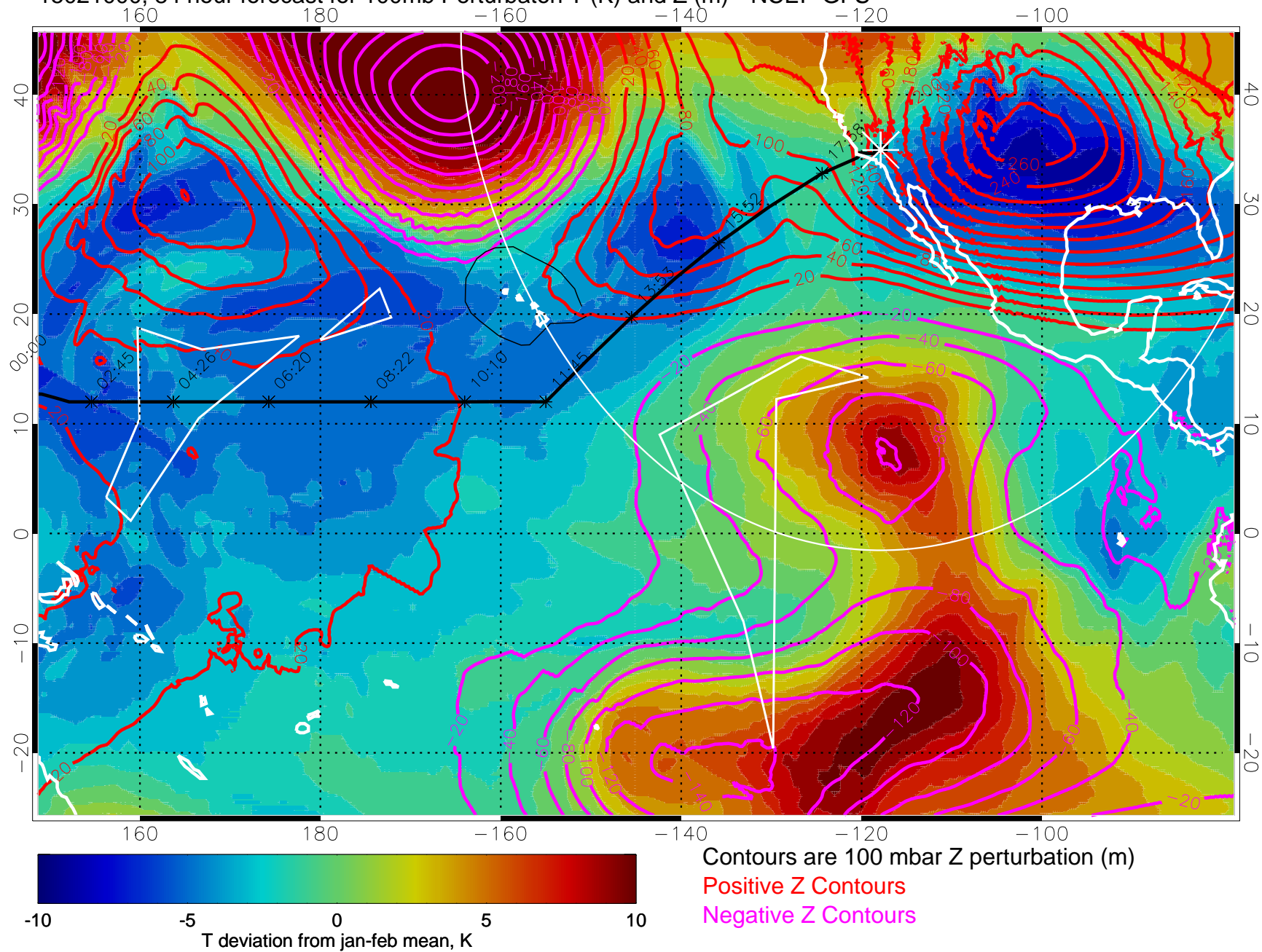
15020912, 72 hour forecast for 100mb Perturbation T (K) and Z (m)-- NCEP GFS



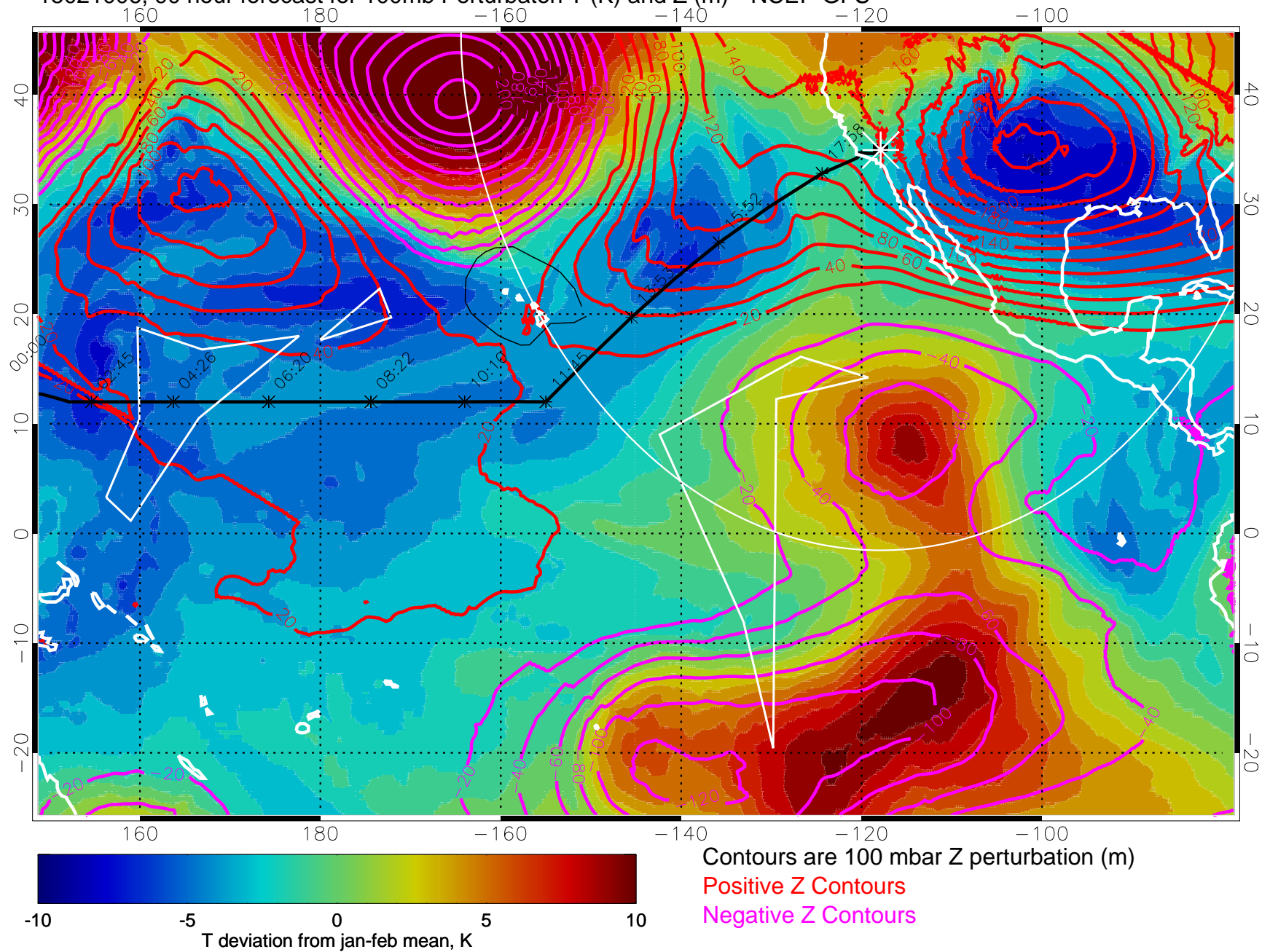
15020918, 78 hour forecast for 100mb Perturbaton T (K) and Z (m)-- NCEP GFS



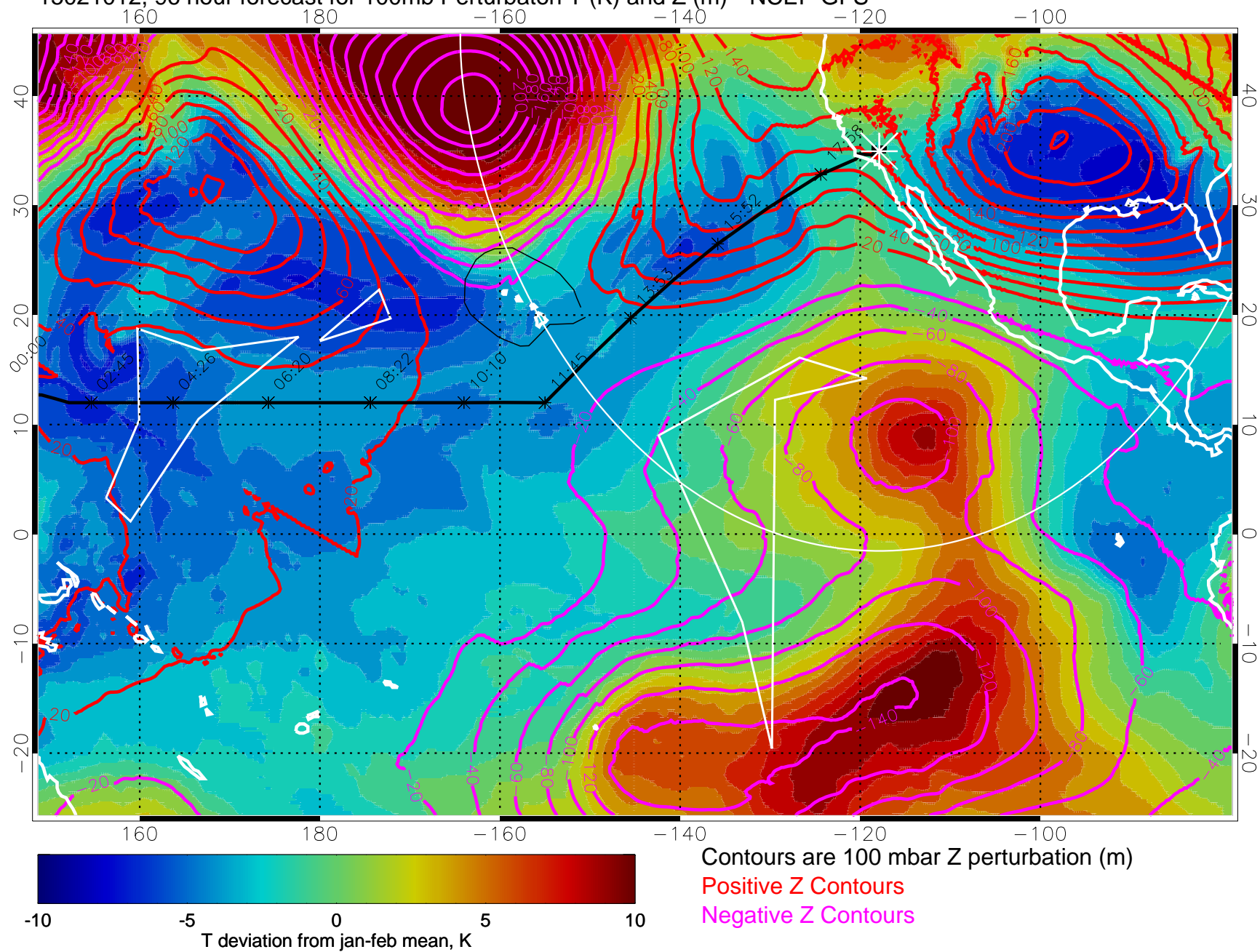
15021000, 84 hour forecast for 100mb Perturbaton T (K) and Z (m)-- NCEP GFS



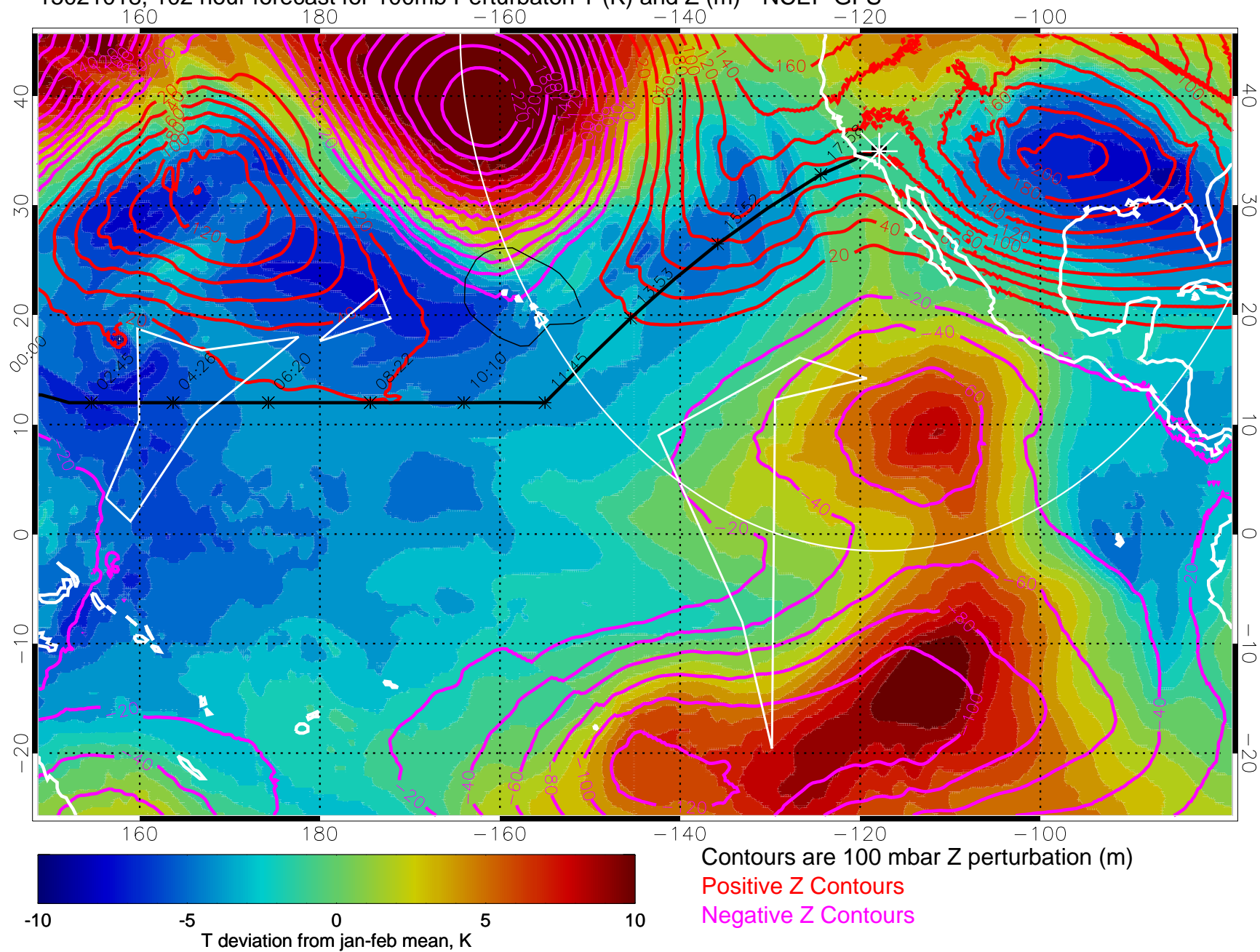
15021006, 90 hour forecast for 100mb Perturbation T (K) and Z (m)-- NCEP GFS



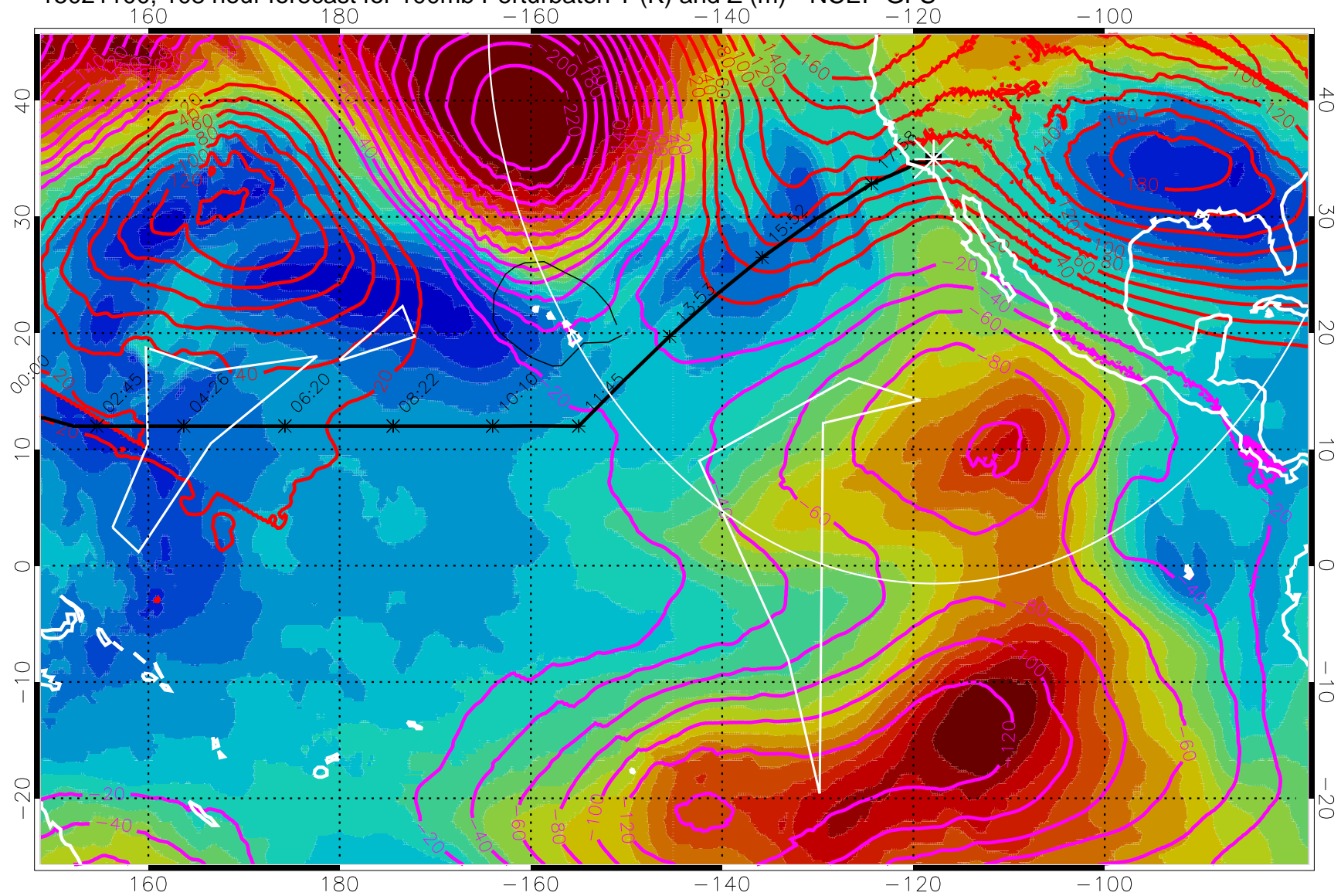
15021012, 96 hour forecast for 100mb Perturbaton T (K) and Z (m)-- NCEP GFS



15021018, 102 hour forecast for 100mb Perturbaton T (K) and Z (m)-- NCEP GFS



15021100, 108 hour forecast for 100mb Perturbaton T (K) and Z (m)-- NCEP GFS

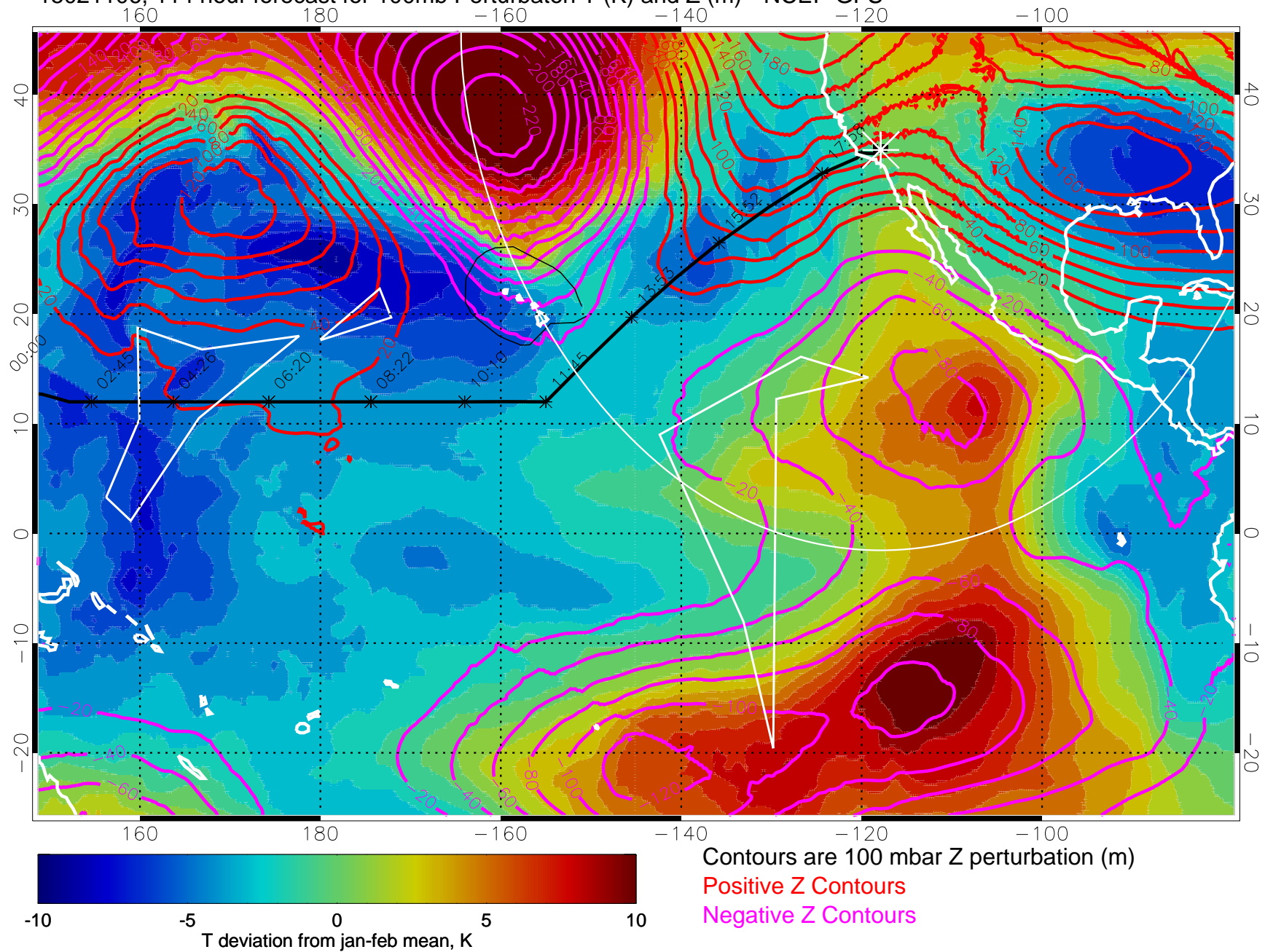


Contours are 100 mbar Z perturbation (m)

Positive Z Contours

Negative Z Contours

15021106, 114 hour forecast for 100mb Perturbaton T (K) and Z (m)-- NCEP GFS



15021112, 120 hour forecast for 100mb Perturbaton T (K) and Z (m)-- NCEP GFS

