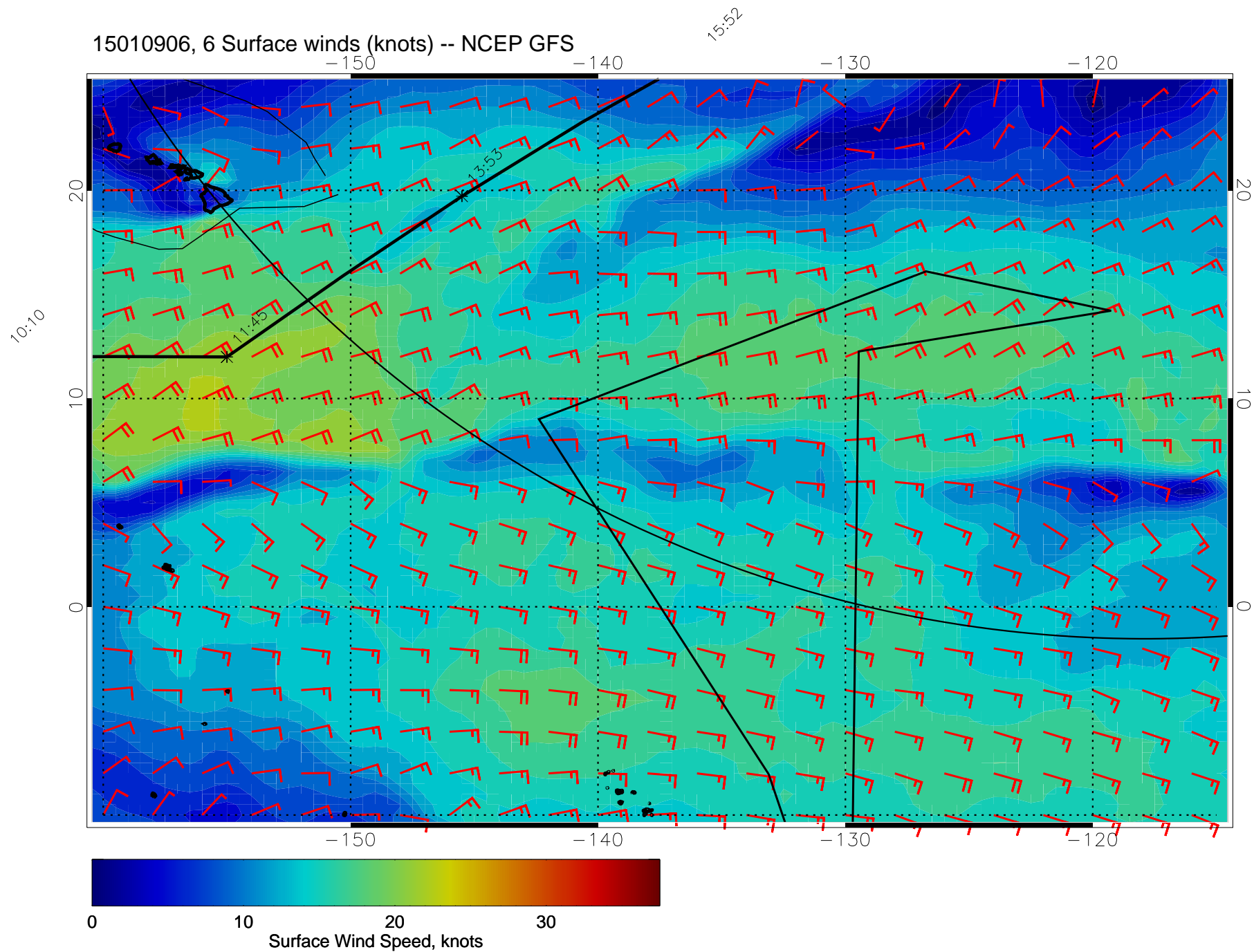
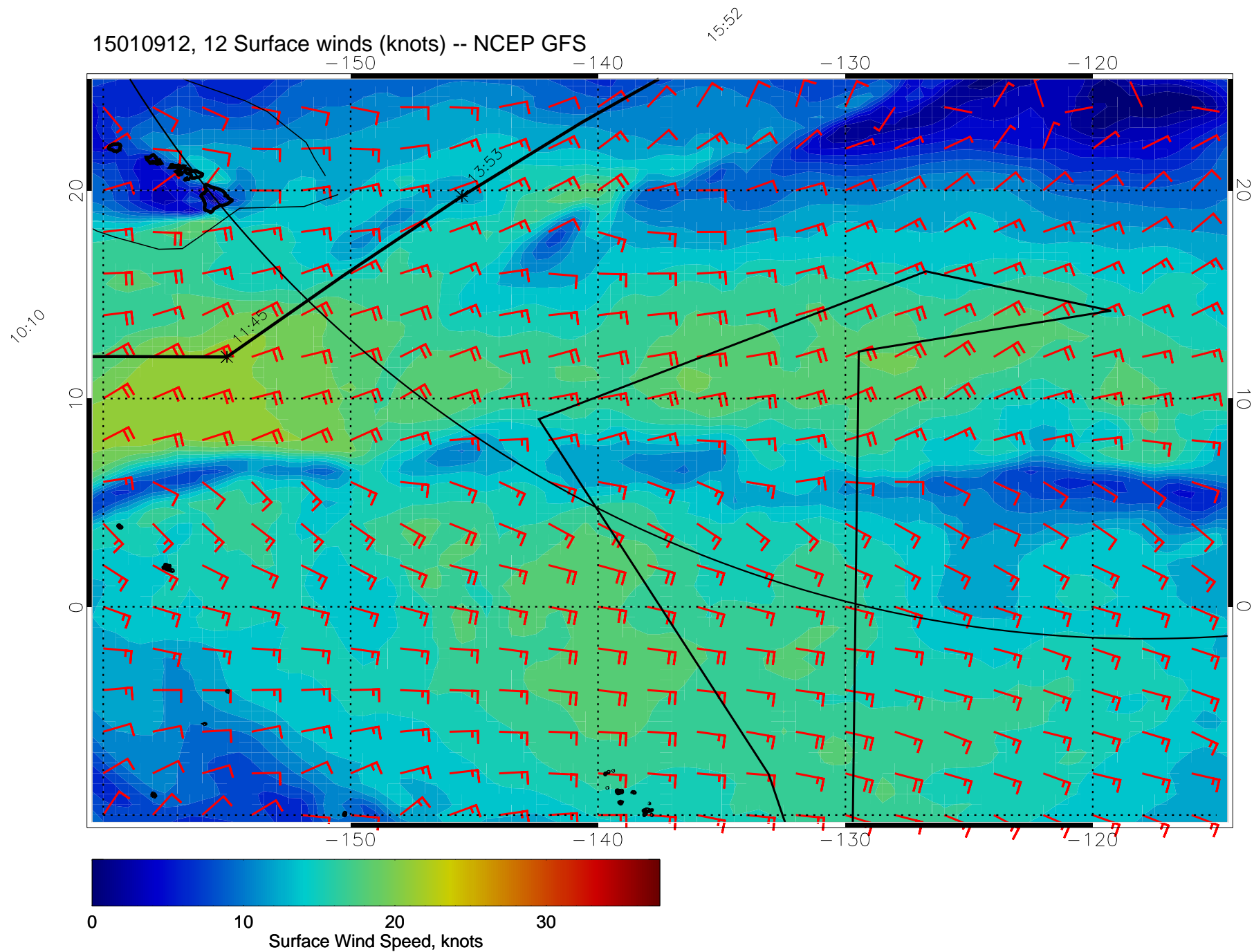


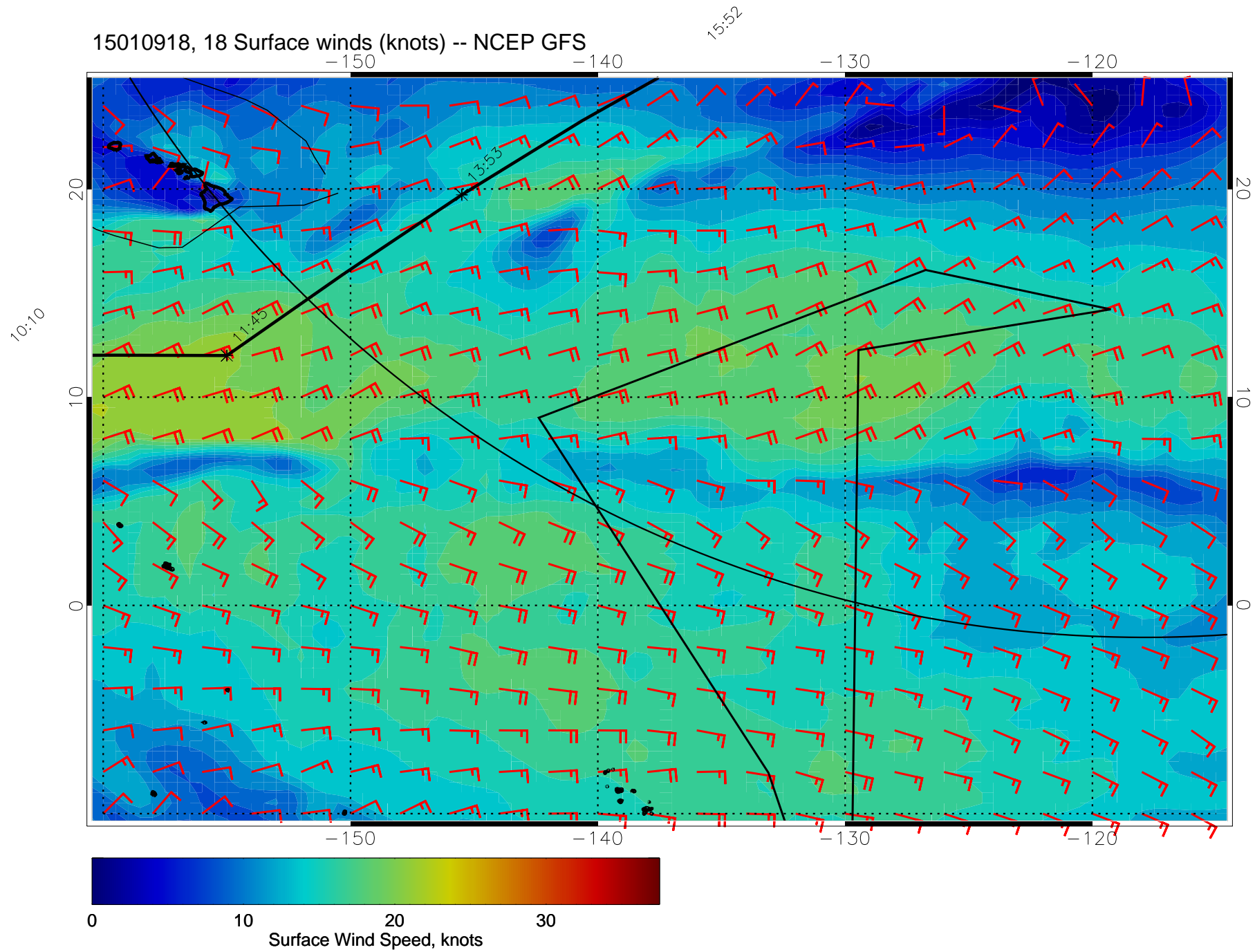
15010906, 6 Surface winds (knots) -- NCEP GFS



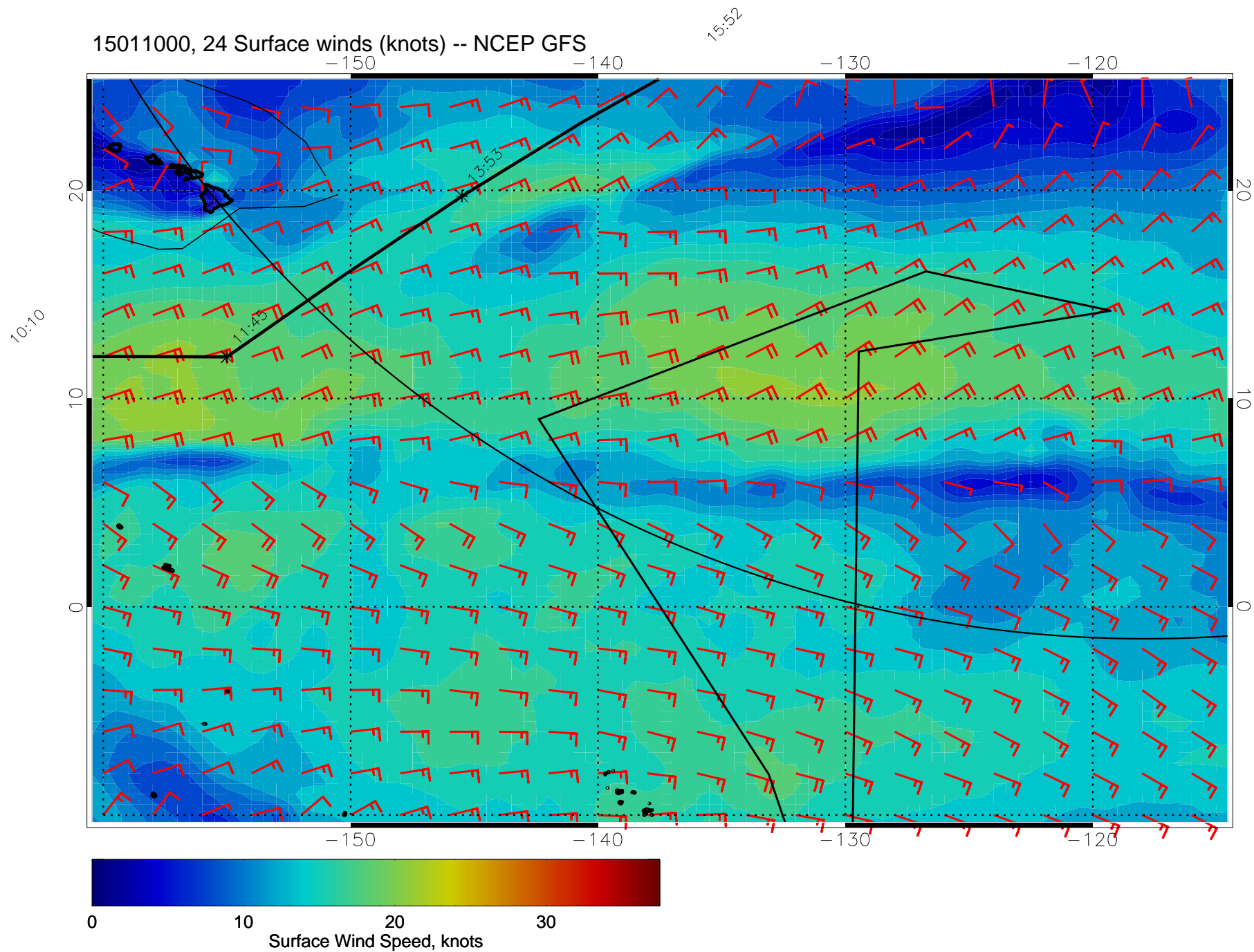
15010912, 12 Surface winds (knots) -- NCEP GFS



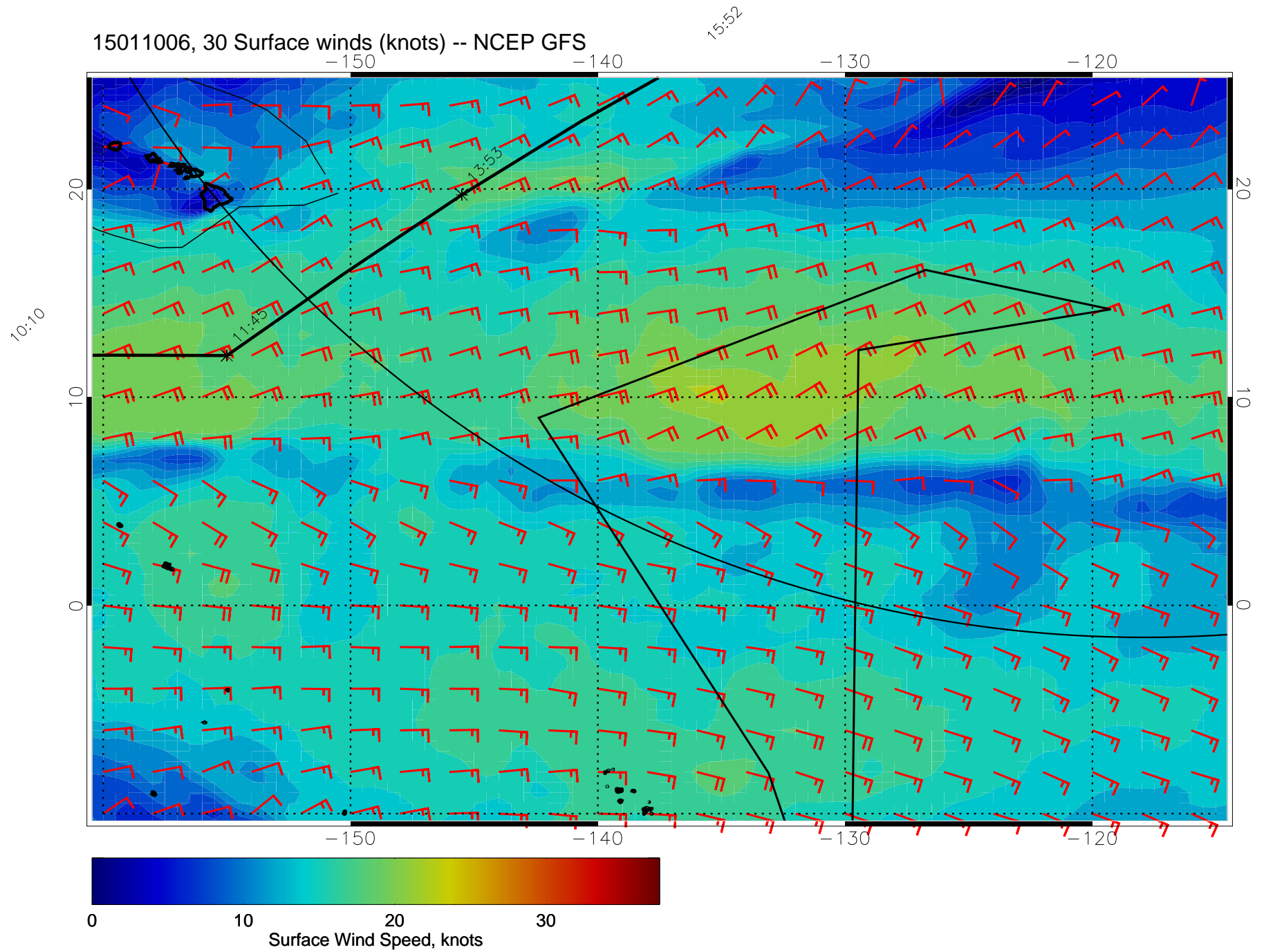
15010918, 18 Surface winds (knots) -- NCEP GFS



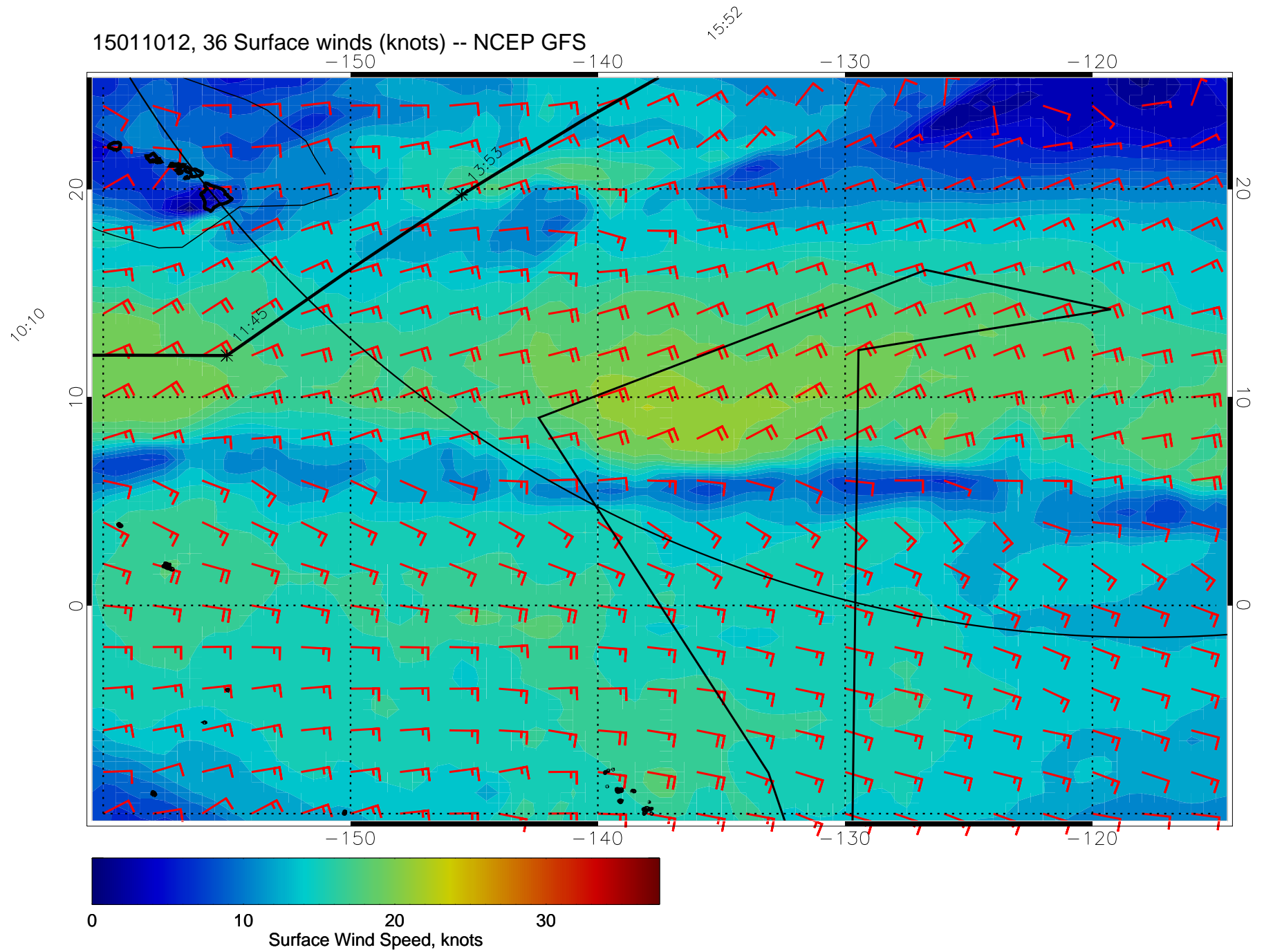
15011000, 24 Surface winds (knots) -- NCEP GFS



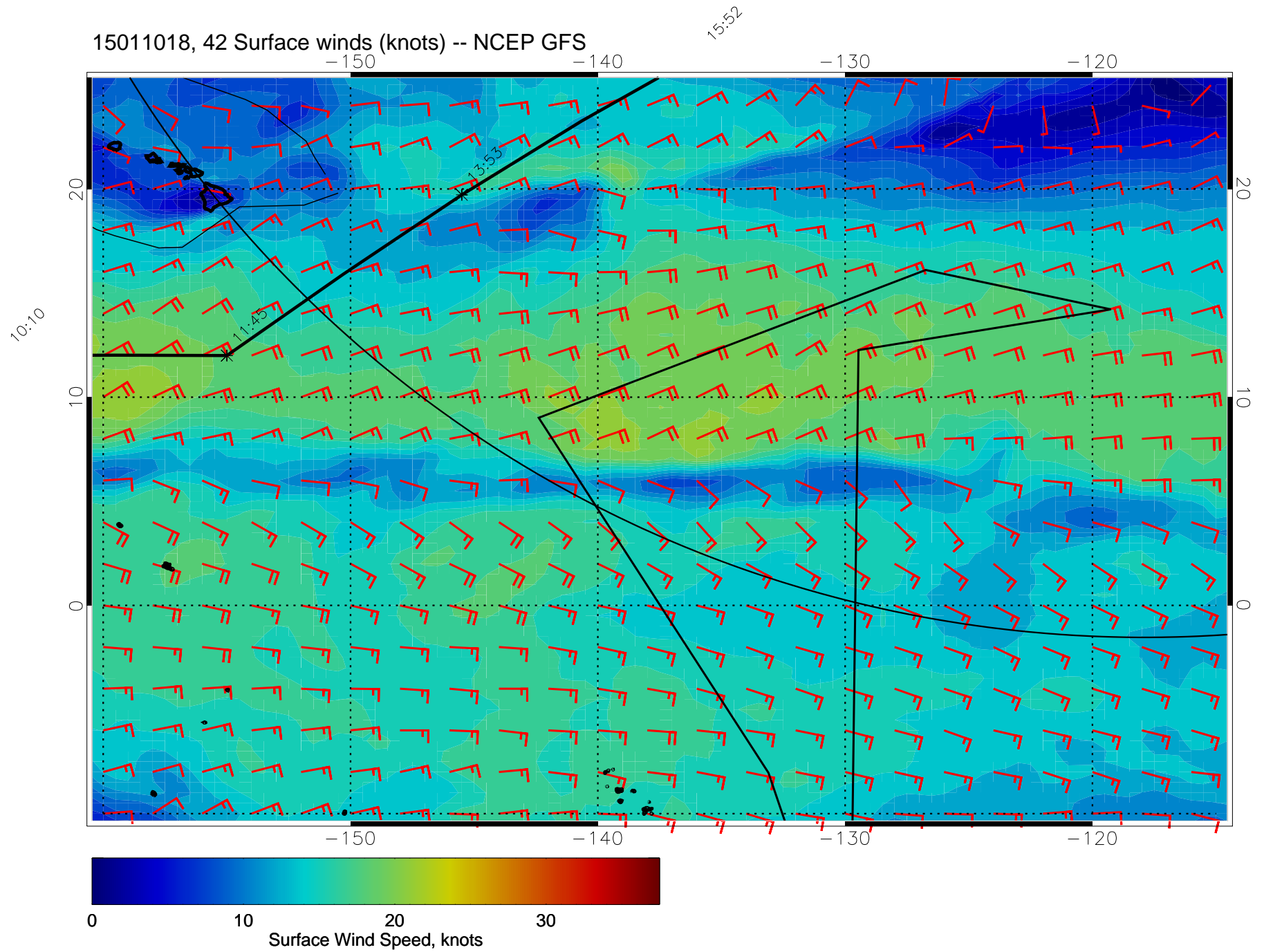
15011006, 30 Surface winds (knots) -- NCEP GFS



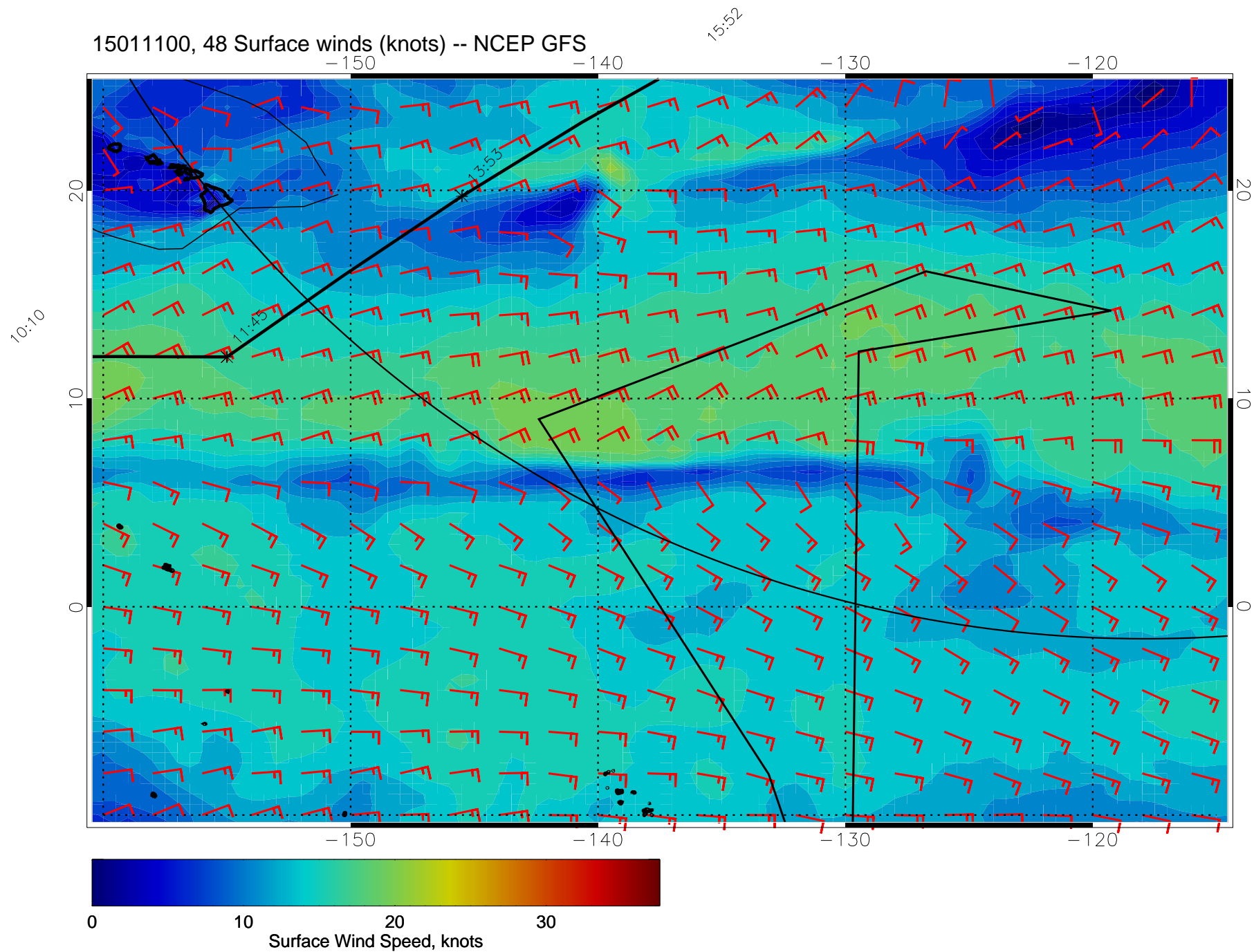
15011012, 36 Surface winds (knots) -- NCEP GFS



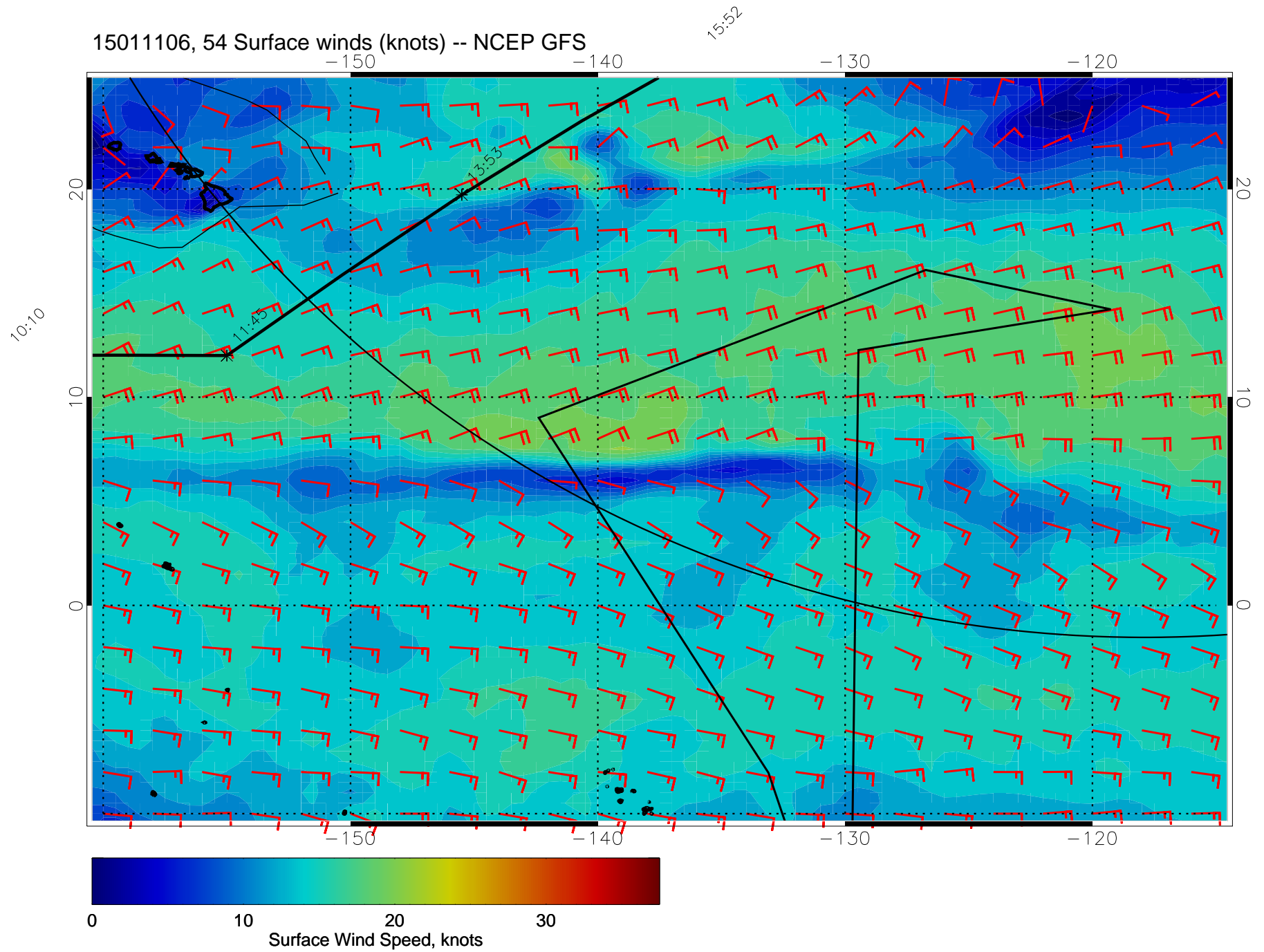
15011018, 42 Surface winds (knots) -- NCEP GFS



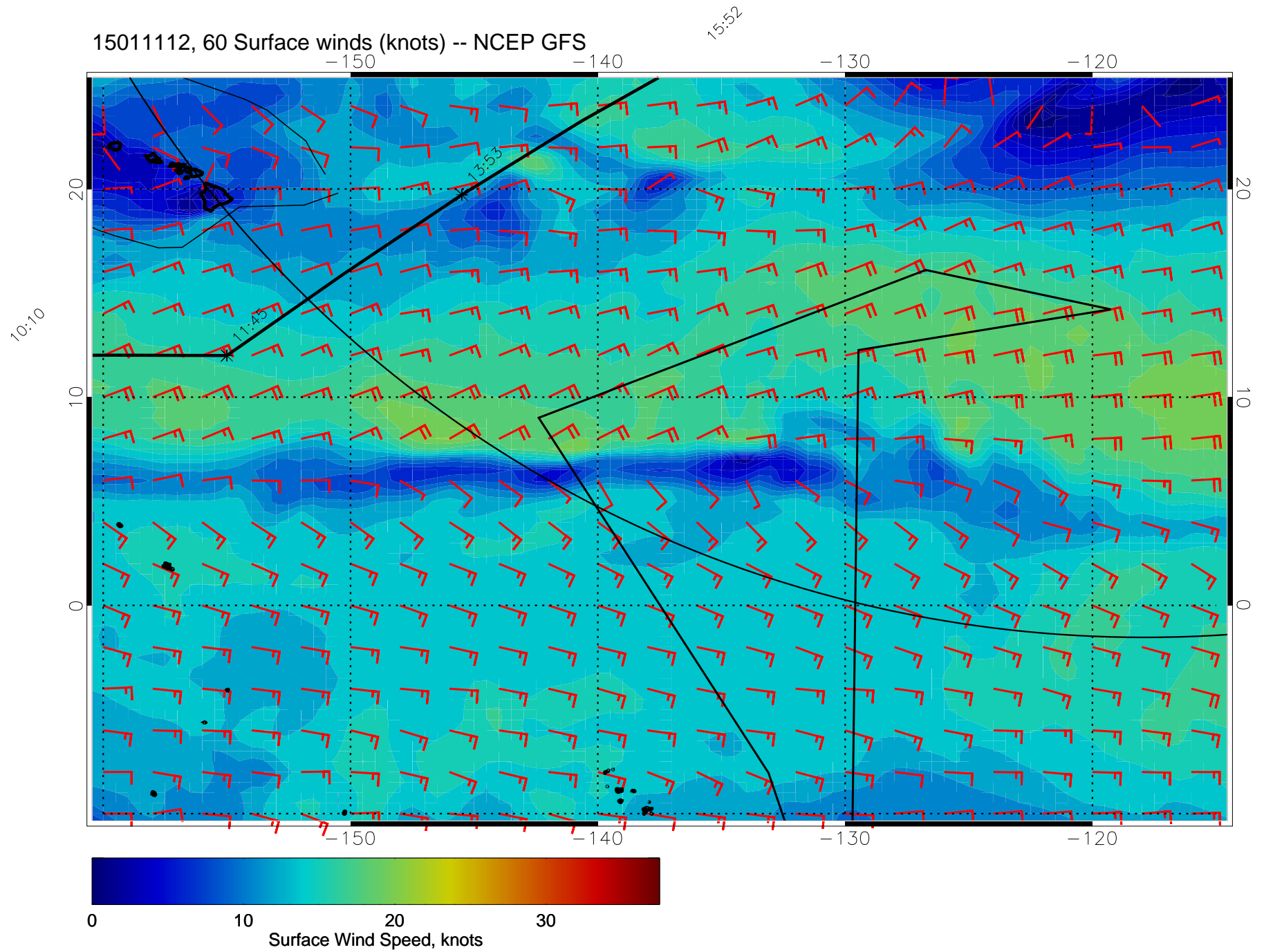
15011100, 48 Surface winds (knots) -- NCEP GFS



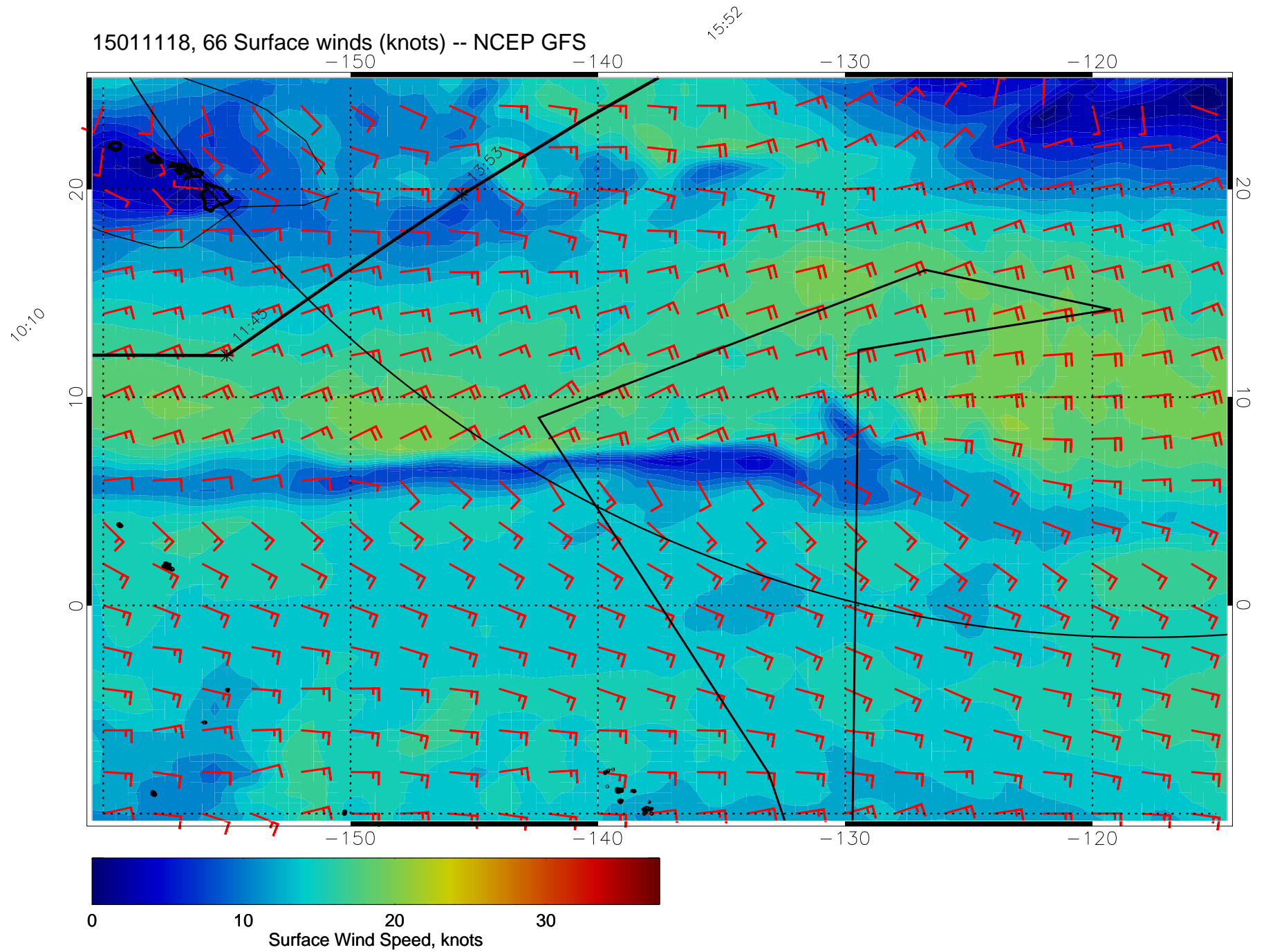
15011106, 54 Surface winds (knots) -- NCEP GFS



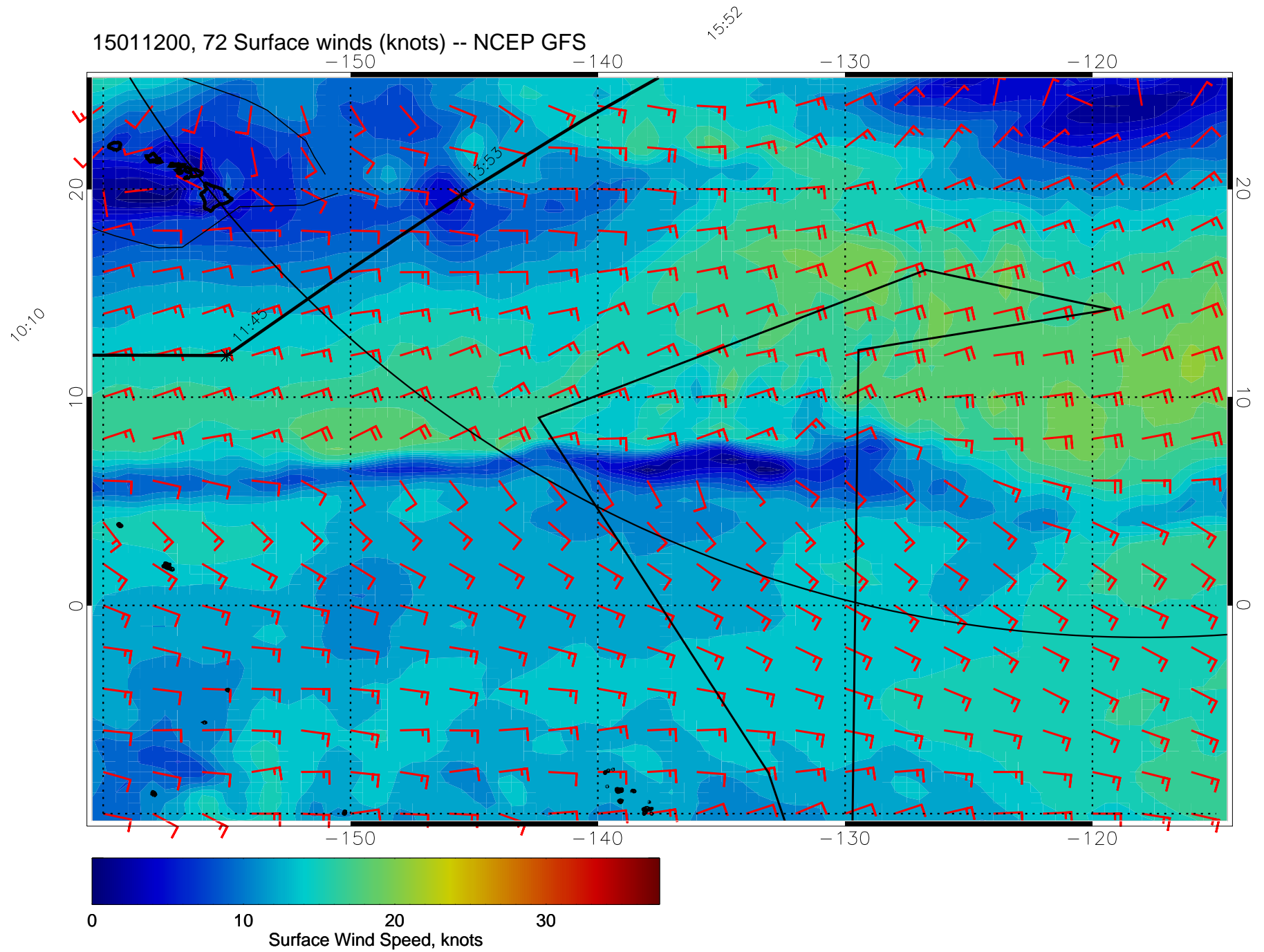
15011112, 60 Surface winds (knots) -- NCEP GFS



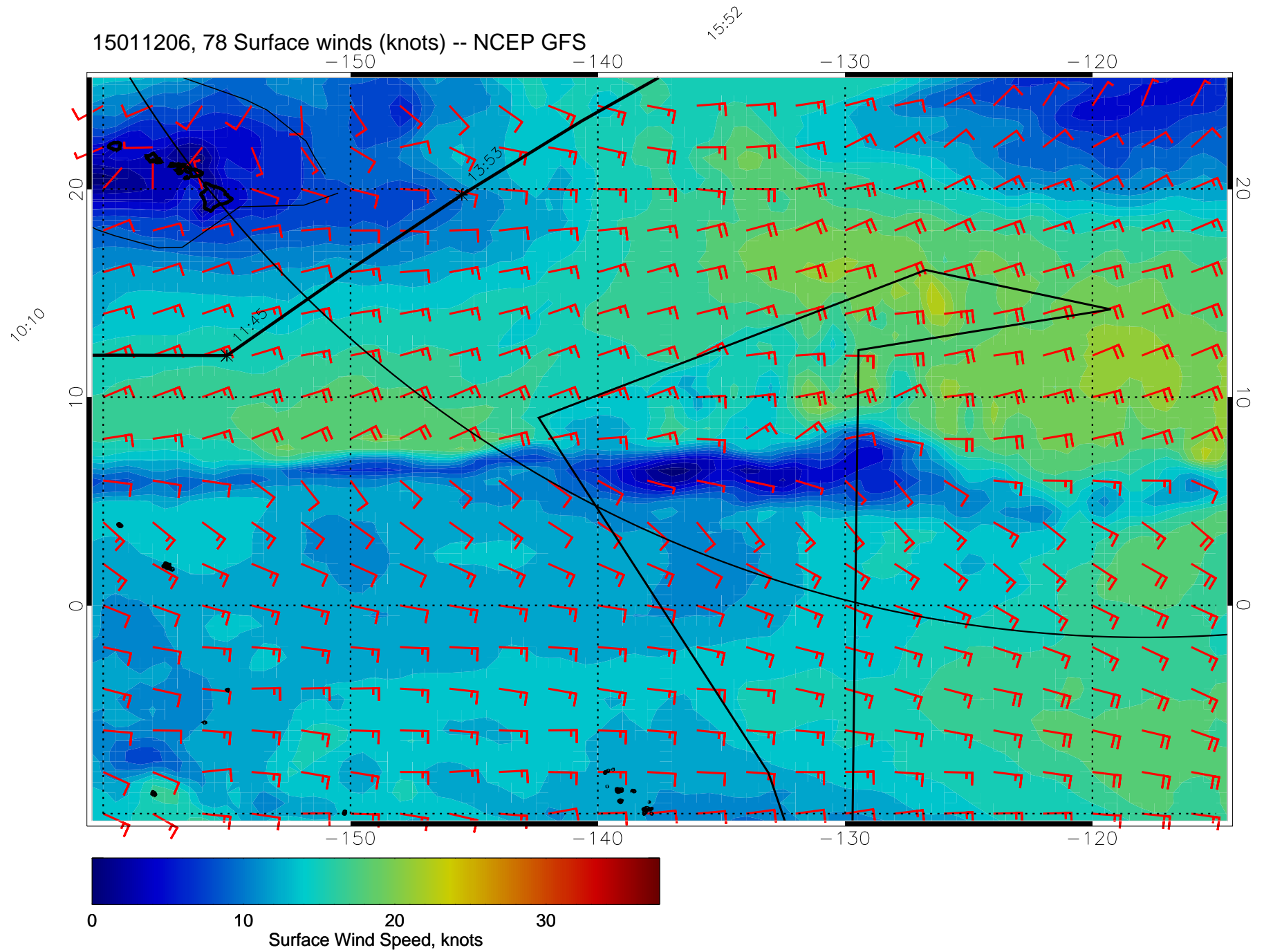
15011118, 66 Surface winds (knots) -- NCEP GFS



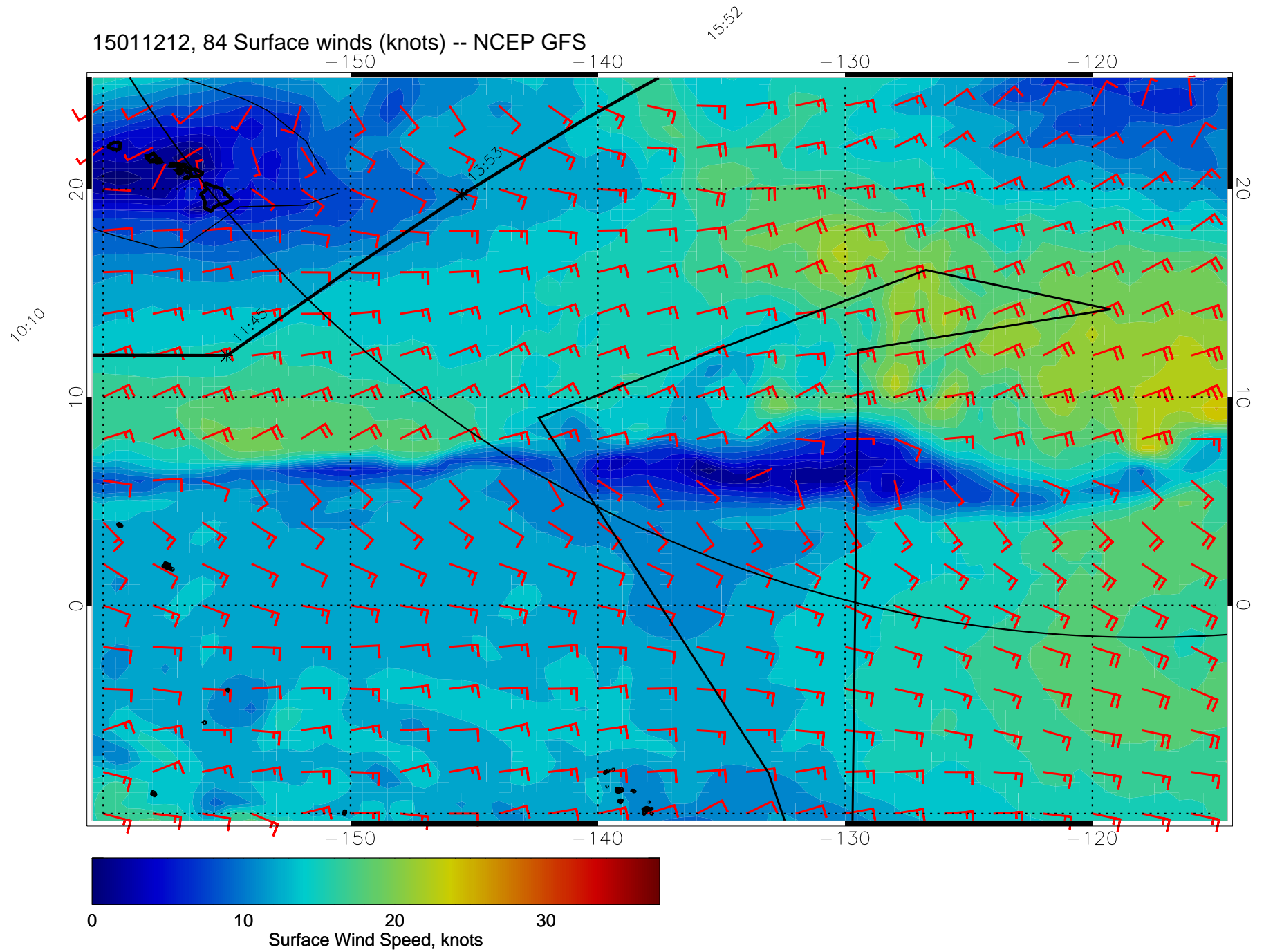
15011200, 72 Surface winds (knots) -- NCEP GFS



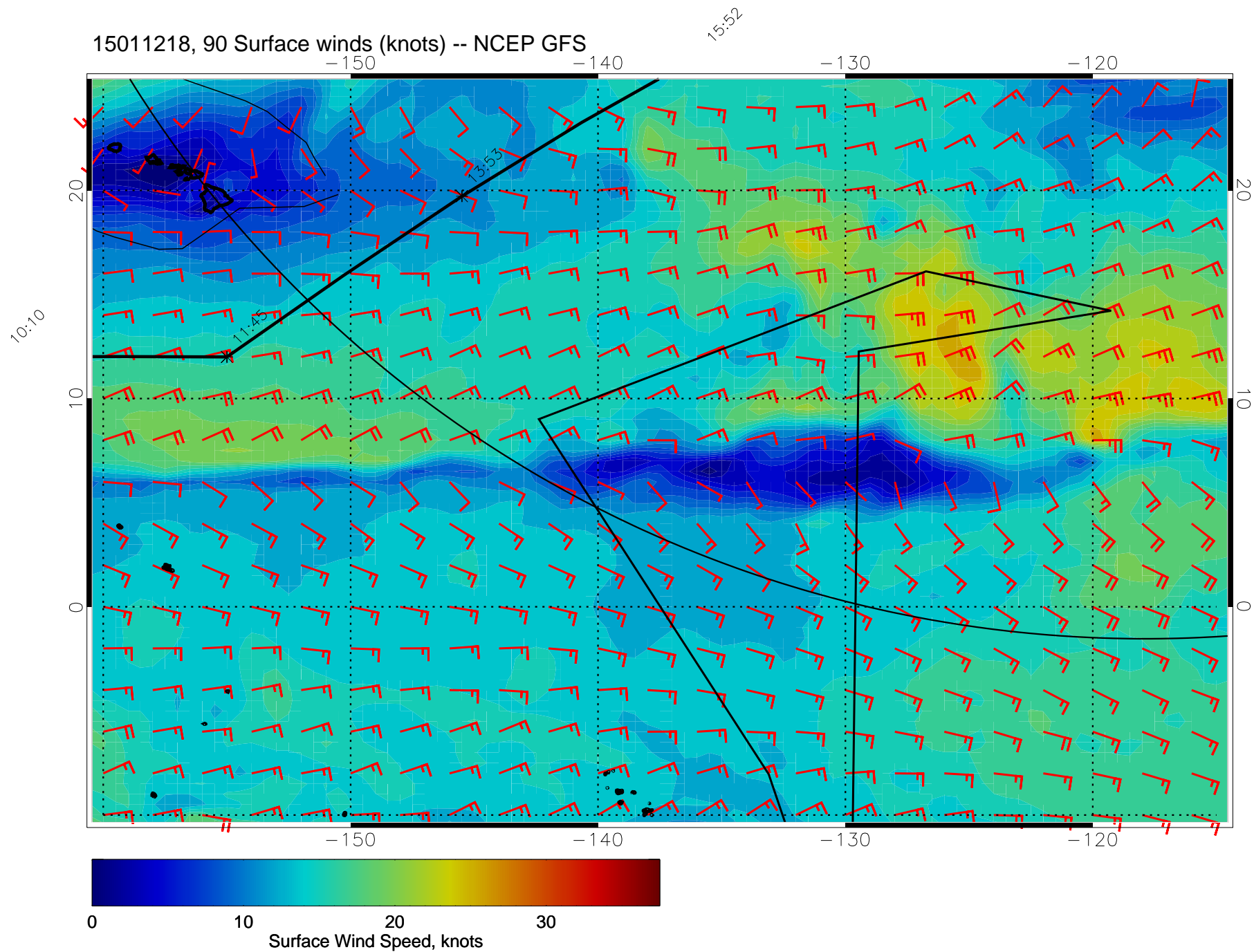
15011206, 78 Surface winds (knots) -- NCEP GFS



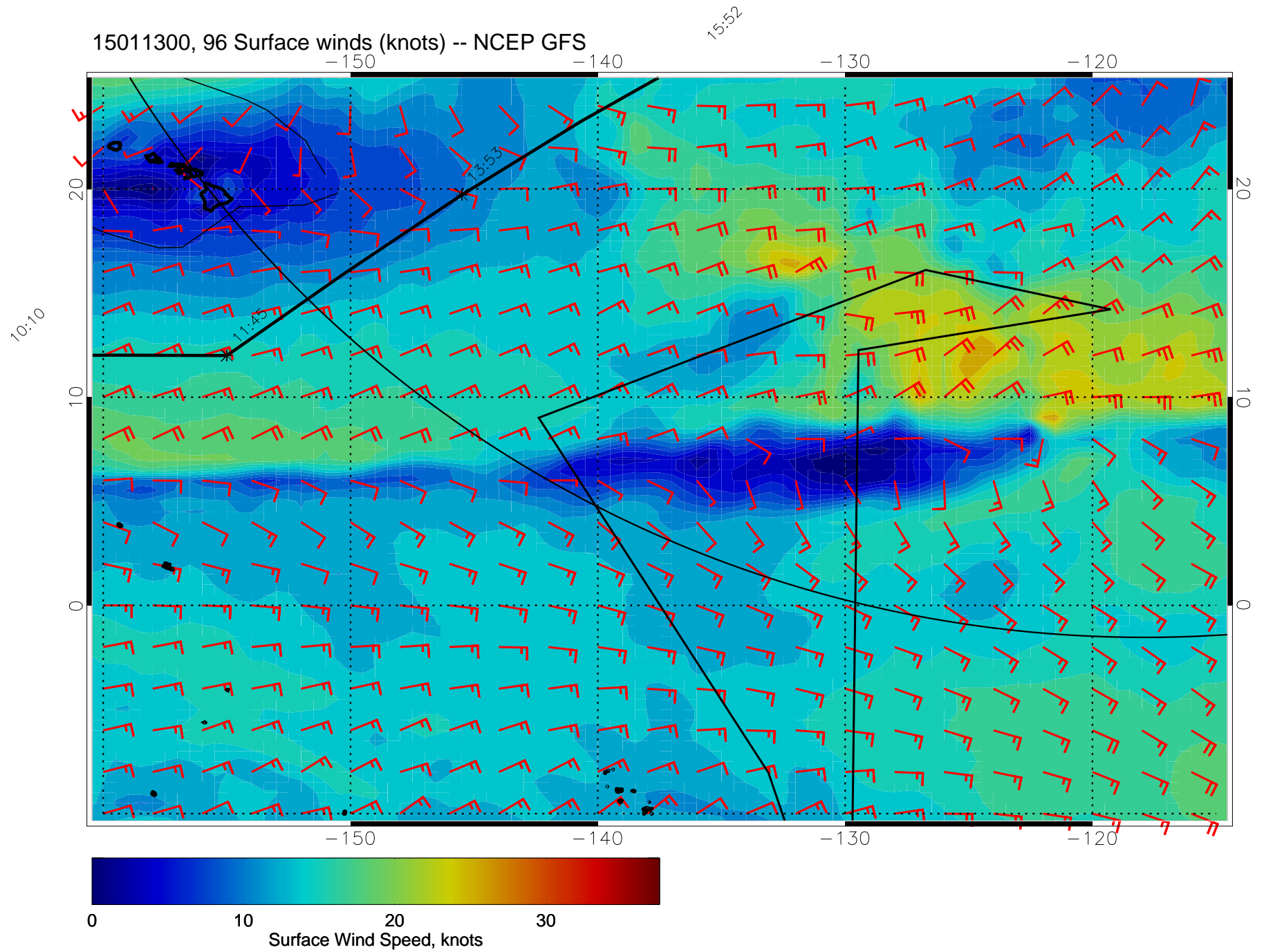
15011212, 84 Surface winds (knots) -- NCEP GFS



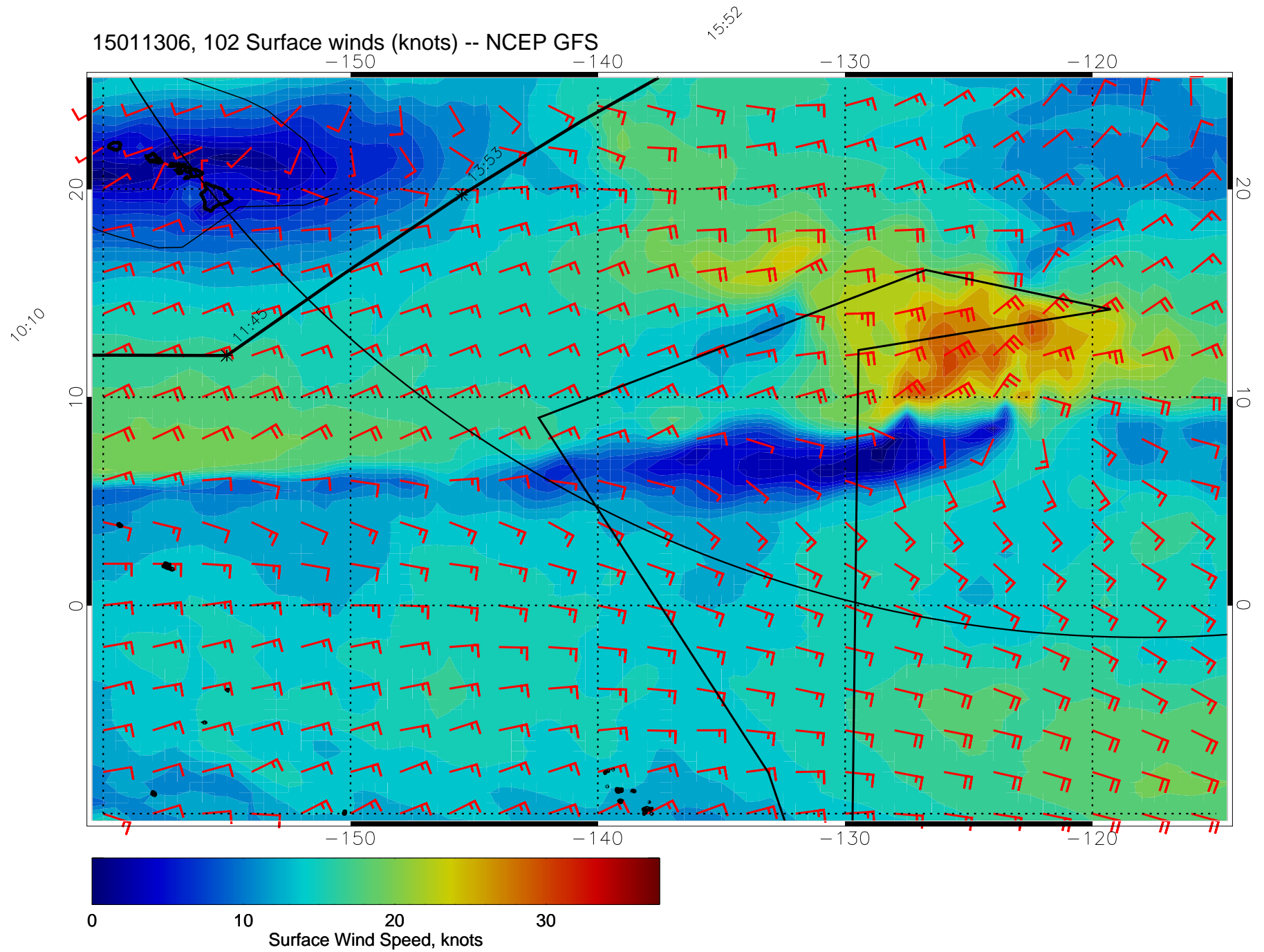
15011218, 90 Surface winds (knots) -- NCEP GFS



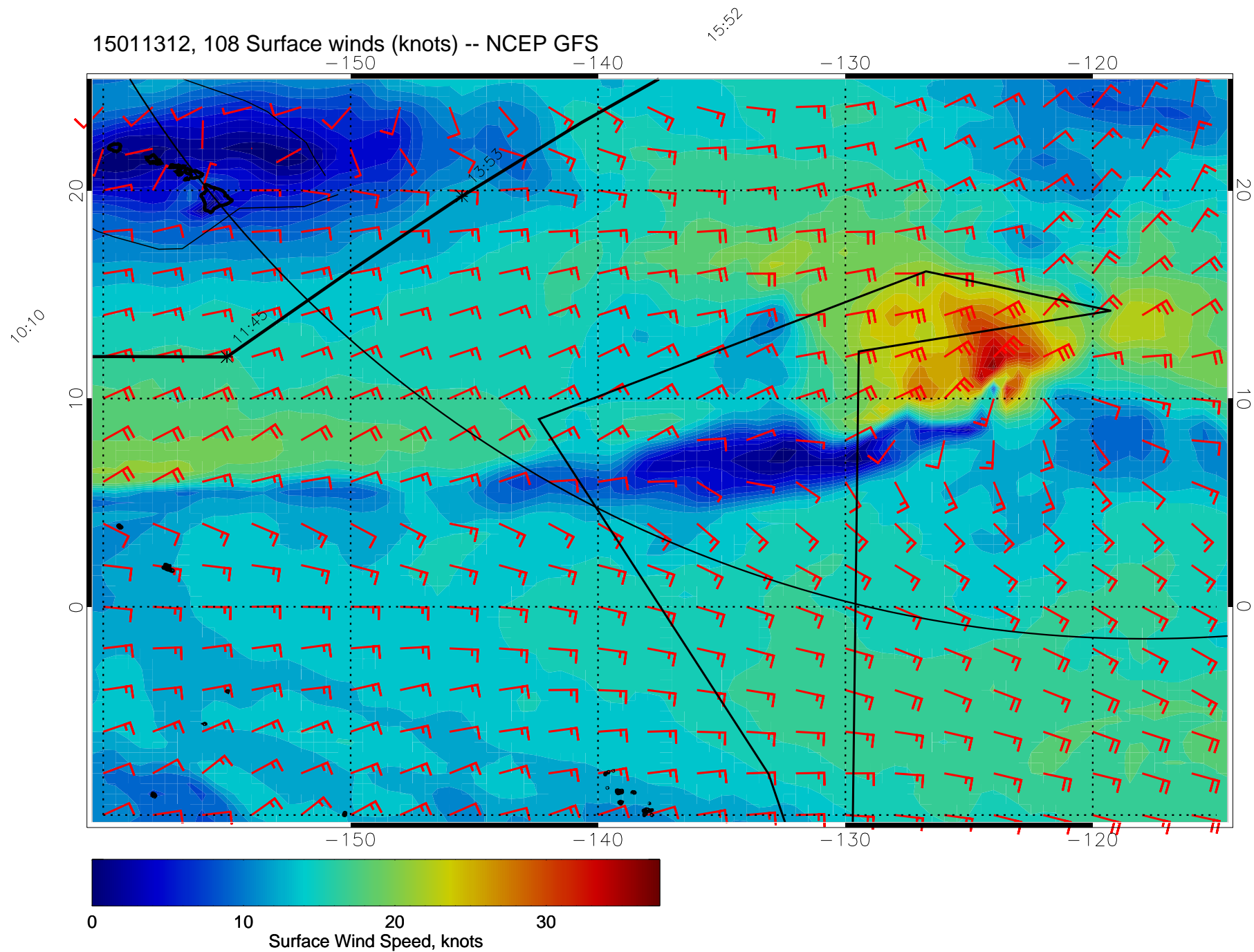
15011300, 96 Surface winds (knots) -- NCEP GFS



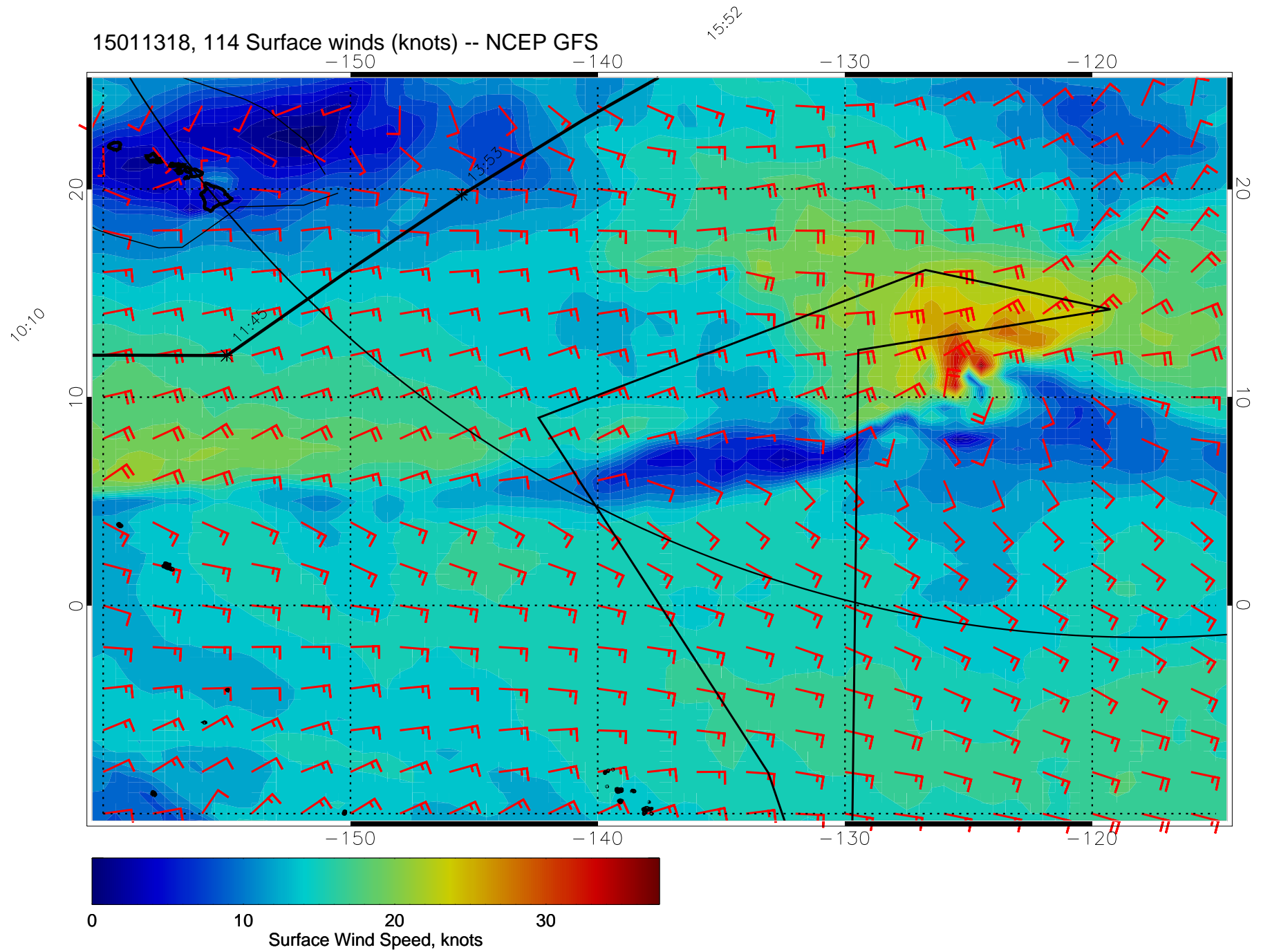
15011306, 102 Surface winds (knots) -- NCEP GFS



15011312, 108 Surface winds (knots) -- NCEP GFS



15011318, 114 Surface winds (knots) -- NCEP GFS



15011400, 120 Surface winds (knots) -- NCEP GFS

