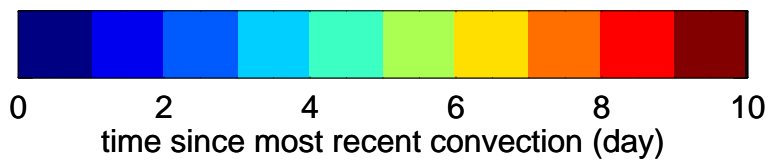
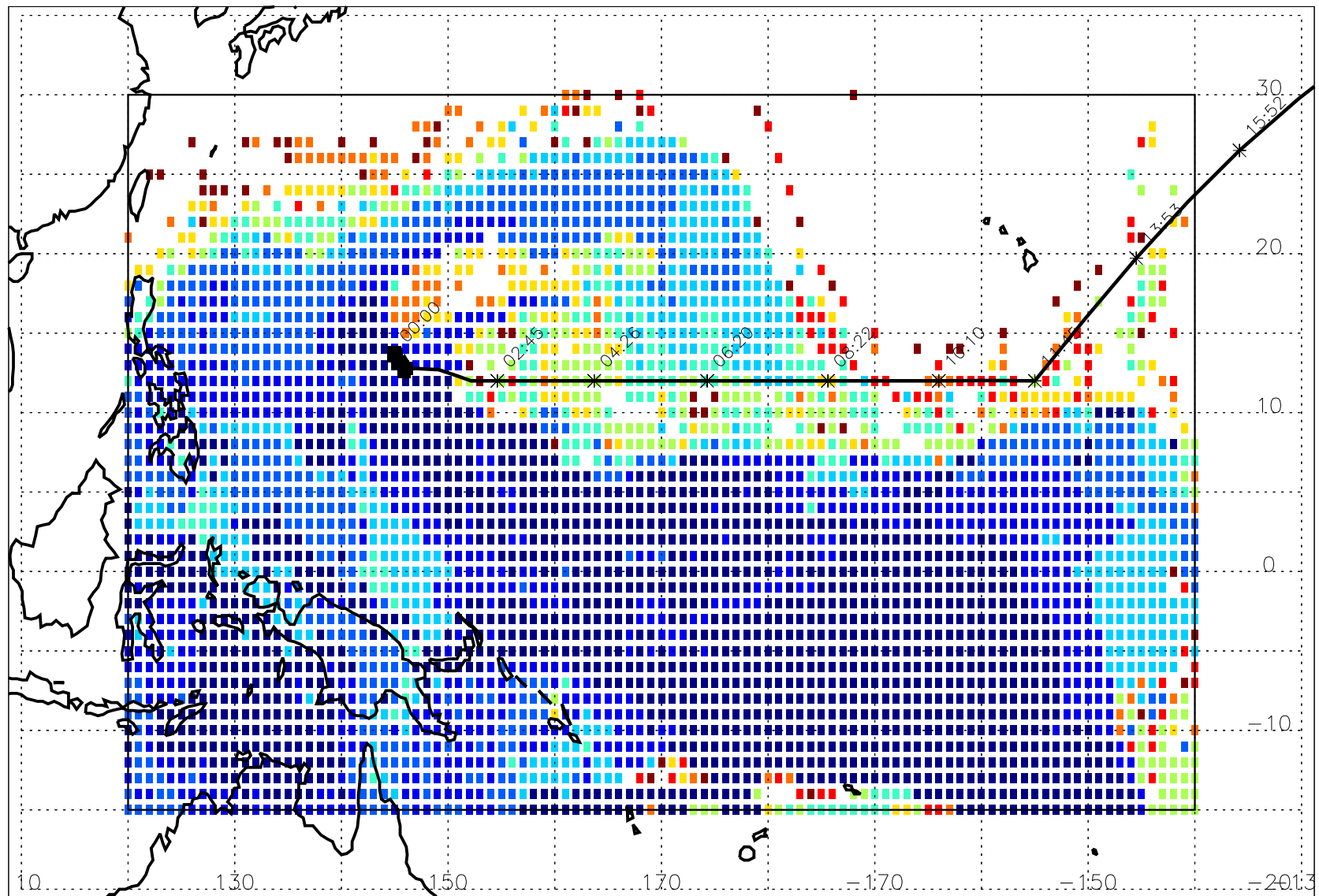


Convectively-influenced 10-day back trajectory at 48 kft level from boxed region on 03/17/2014, 00Z

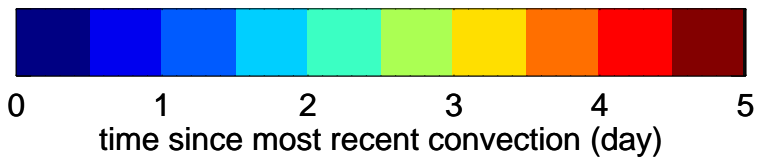
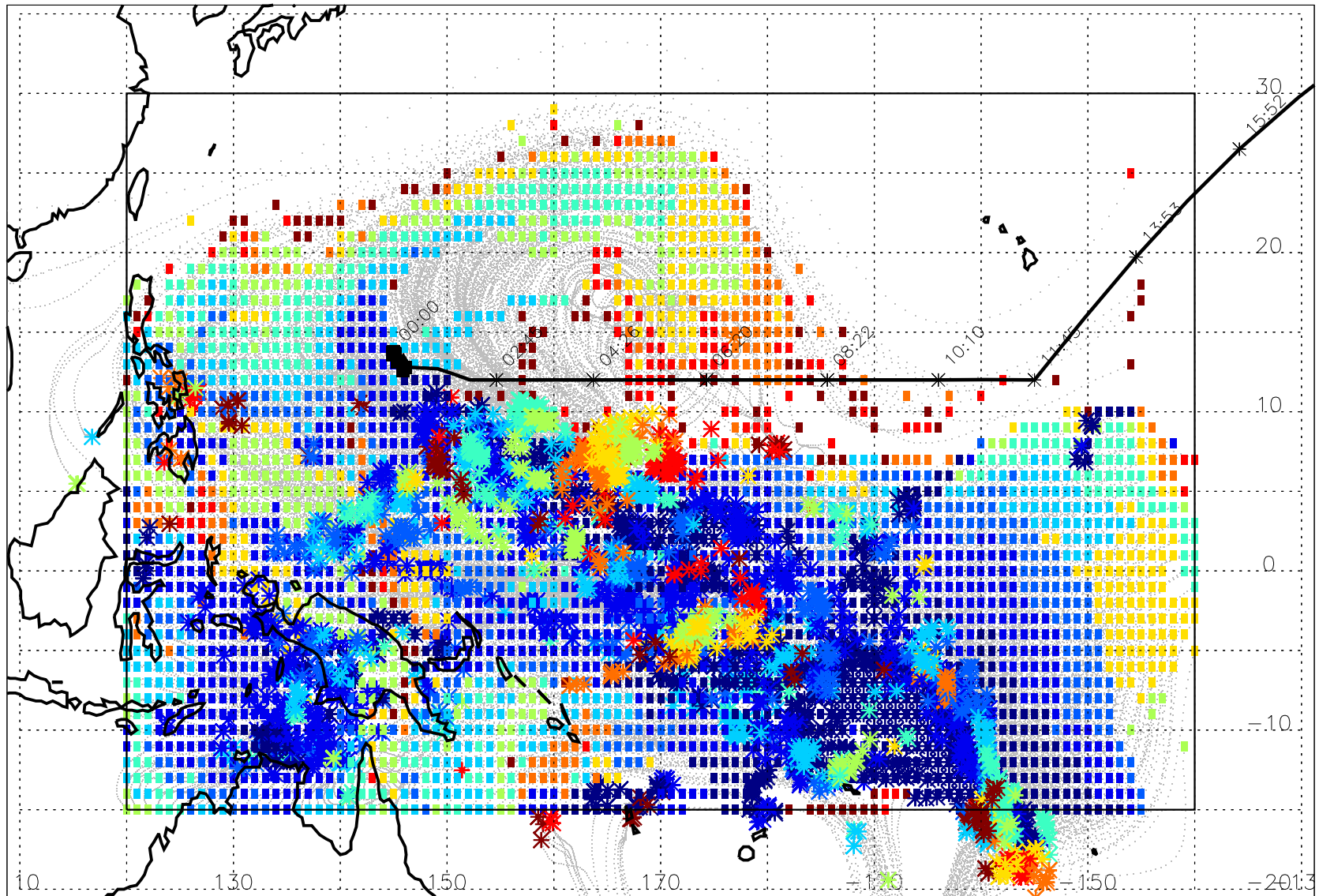
Fig. 1: End locations of trajectories influenced by convection in the past 10 days. Time since most recent convection in color.



17:58

Convectively-influenced 10-day back trajectory at 48 kft level from boxed region on 03/17/2014, 00Z

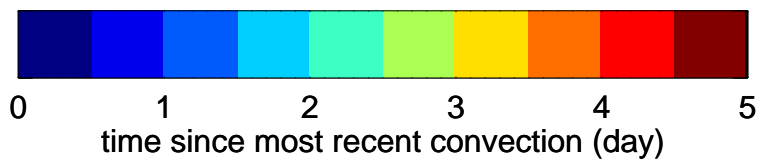
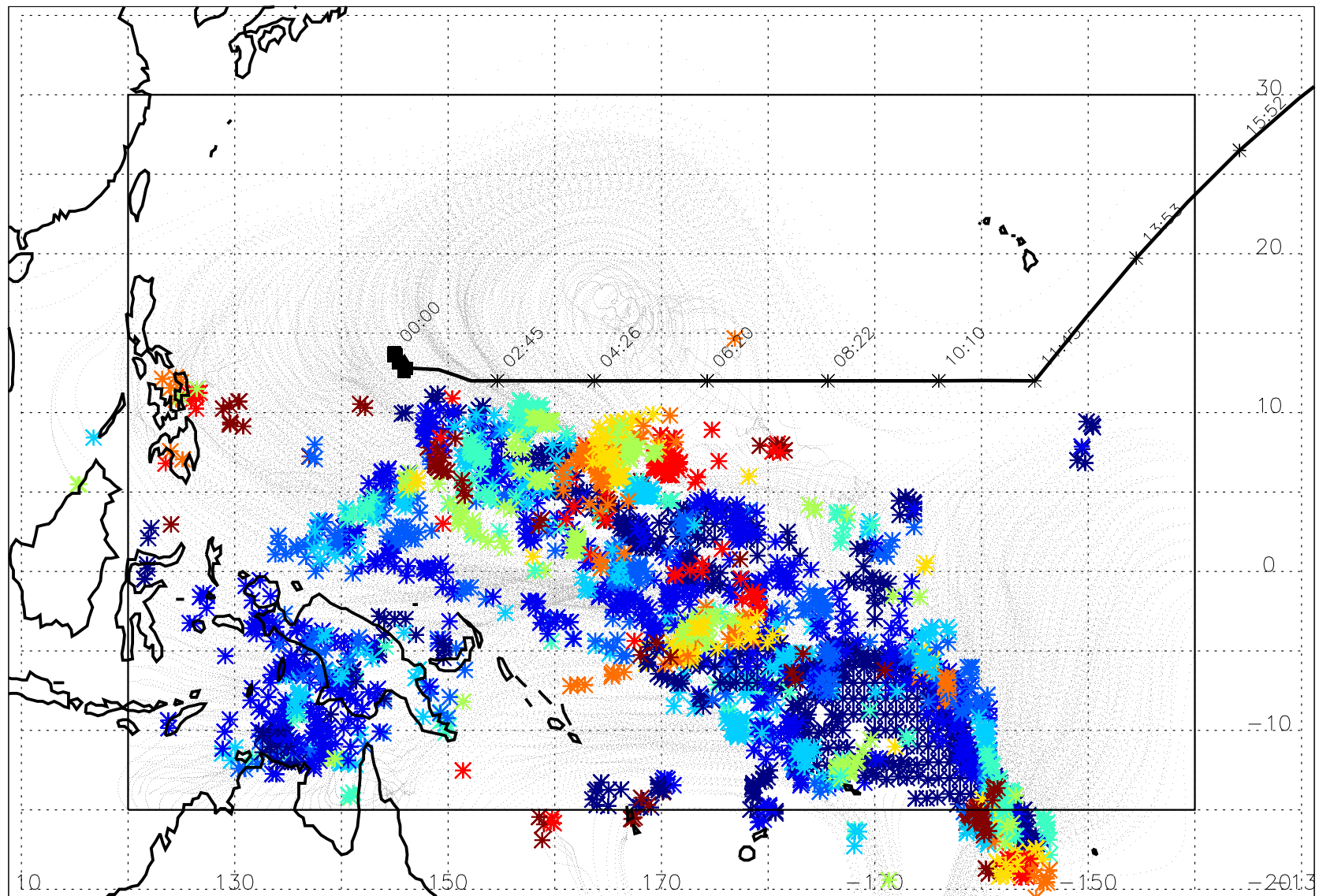
Fig. 2: Trajectories influenced by most recent convection (asterisks) between 0 and 5.0 days



17:58

Convectively-influenced 10-day back trajectory at 48 kft level from boxed region on 03/17/2014, 00Z

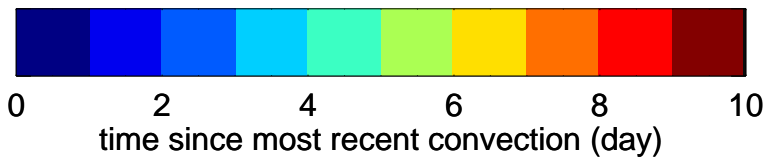
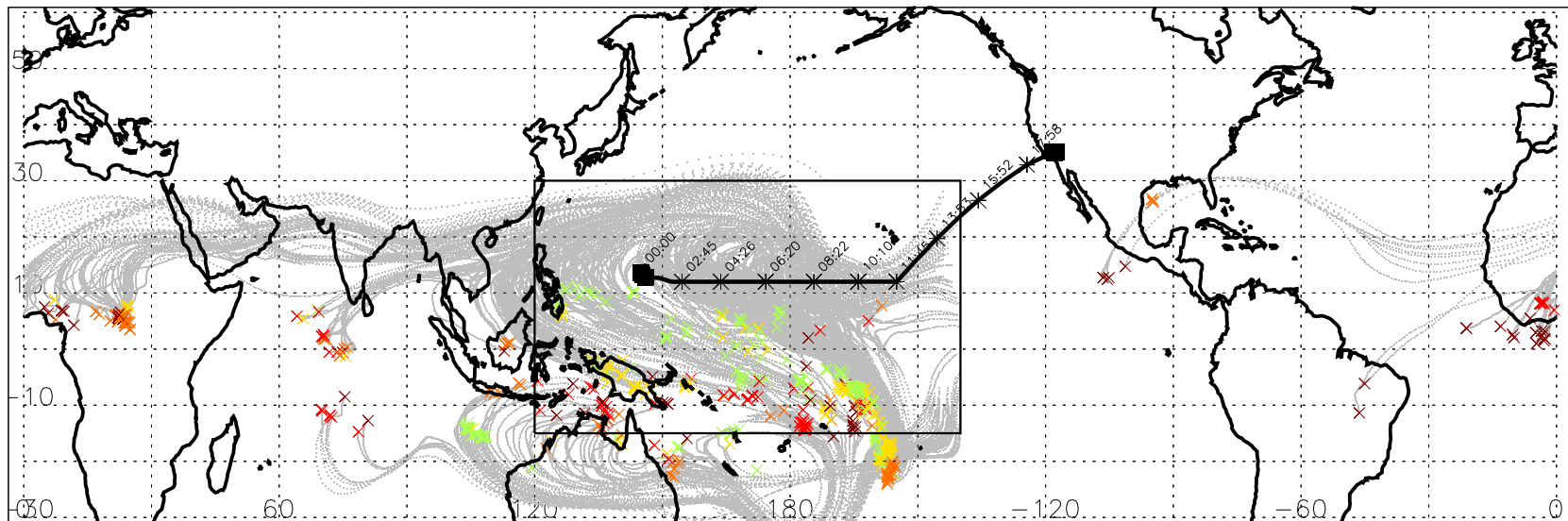
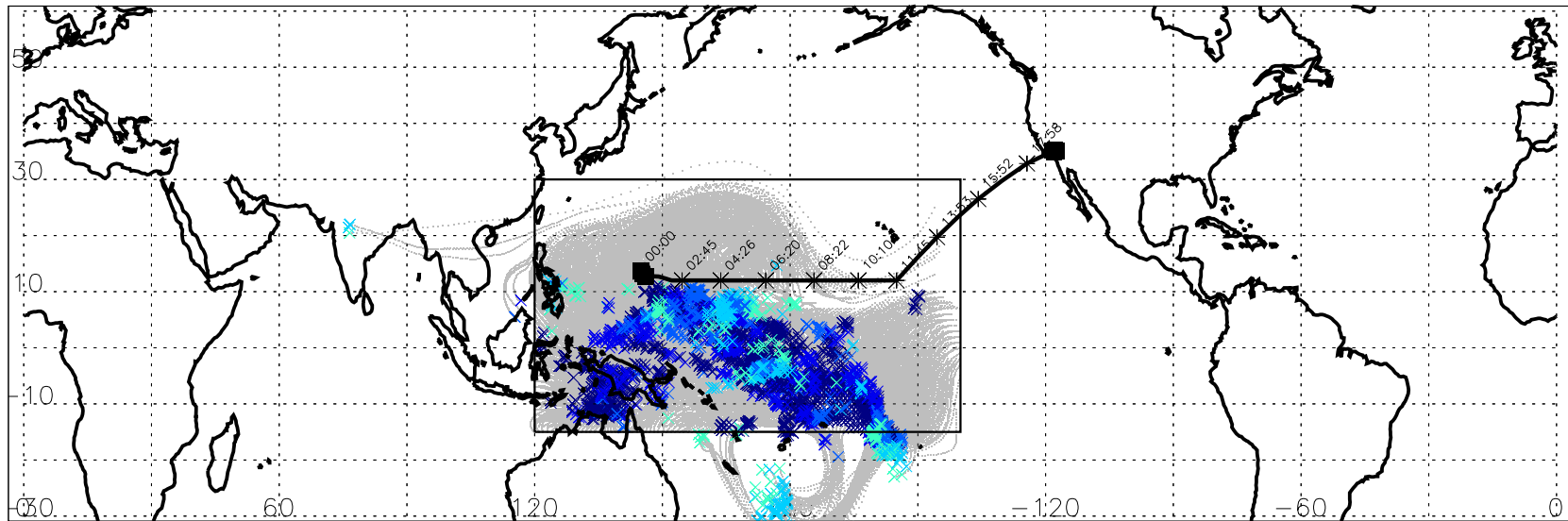
Fig. 3: Trajectories influenced by most recent convection (asterisks) between 0 and 5.0 days (As Fig. 2 but convection locations only)



17:58

Convectively-influenced 10-day back trajectory at 48 kft level from boxed region on 03/17/2014, 00Z

Fig. 4: Locations of most recent convection (top: 0 to 5.0 days; bottom: 5.0 to 10 days).



Convectively-influenced 10-day back trajectory at 48 kft level from boxed region on 03/17/2014, 00Z

Fig. 5: Trajectories influenced by most recent convection that occurs outside of boxed region at location X.

