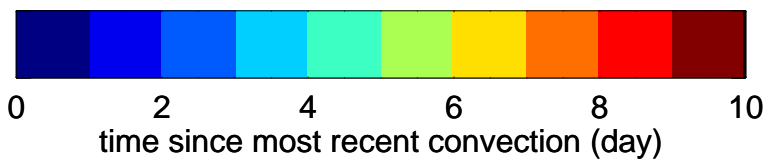
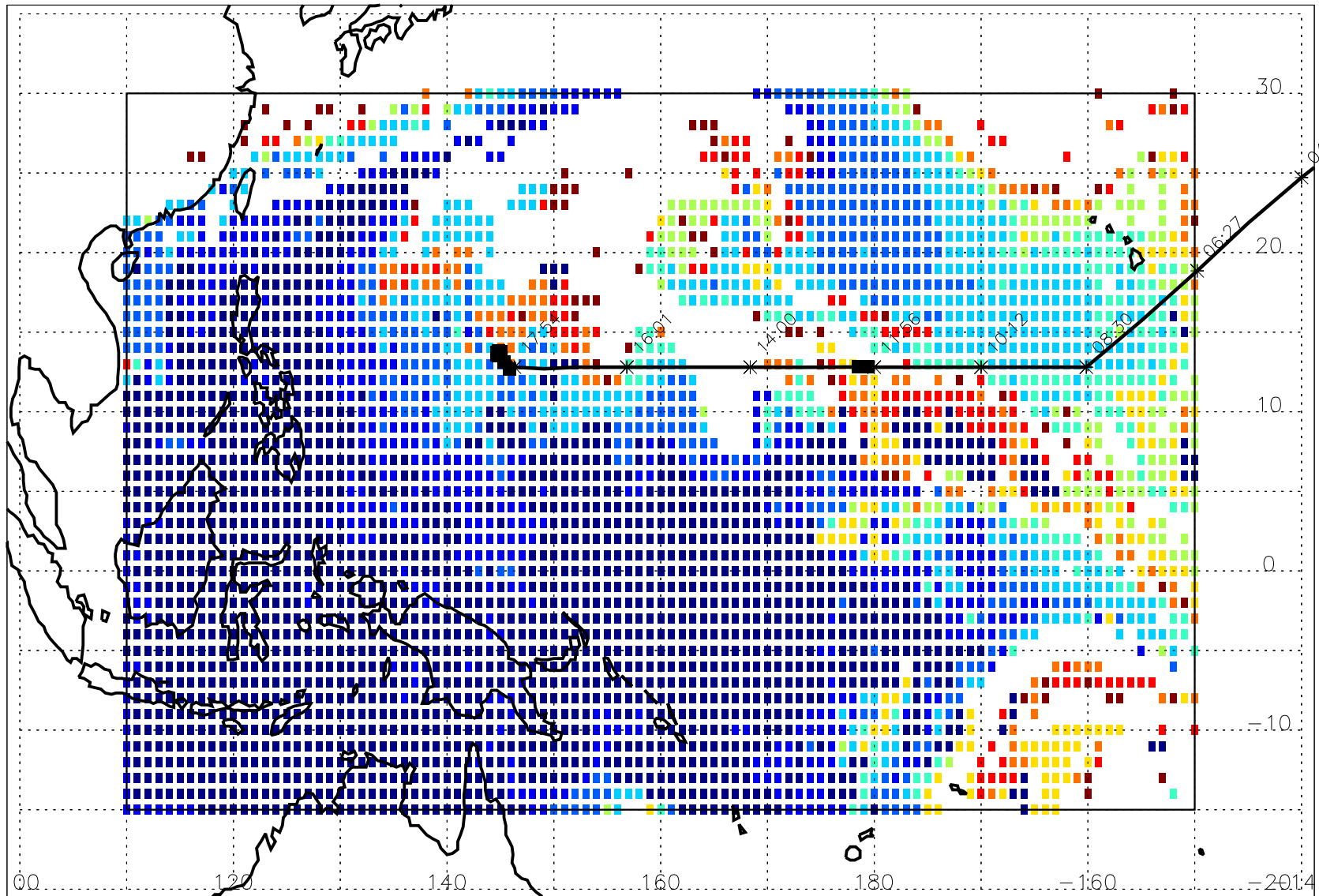


Convectively-influenced 10-day back trajectory at 48 kft level from boxed region on 01/14/2014, 00Z

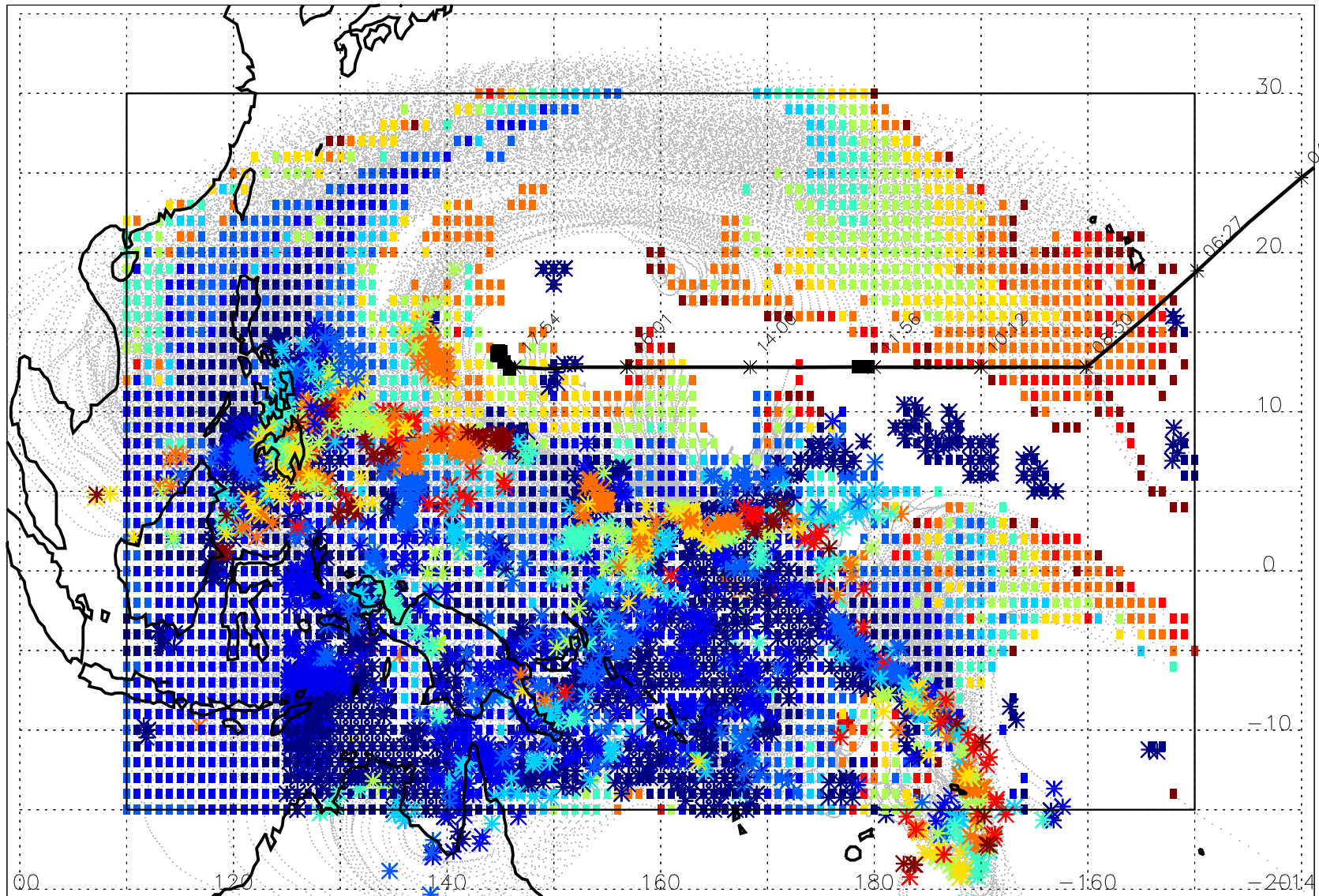
Fig. 1: End locations of trajectories influenced by convection in the past 10 days. Time since most recent convection in color.



02:43

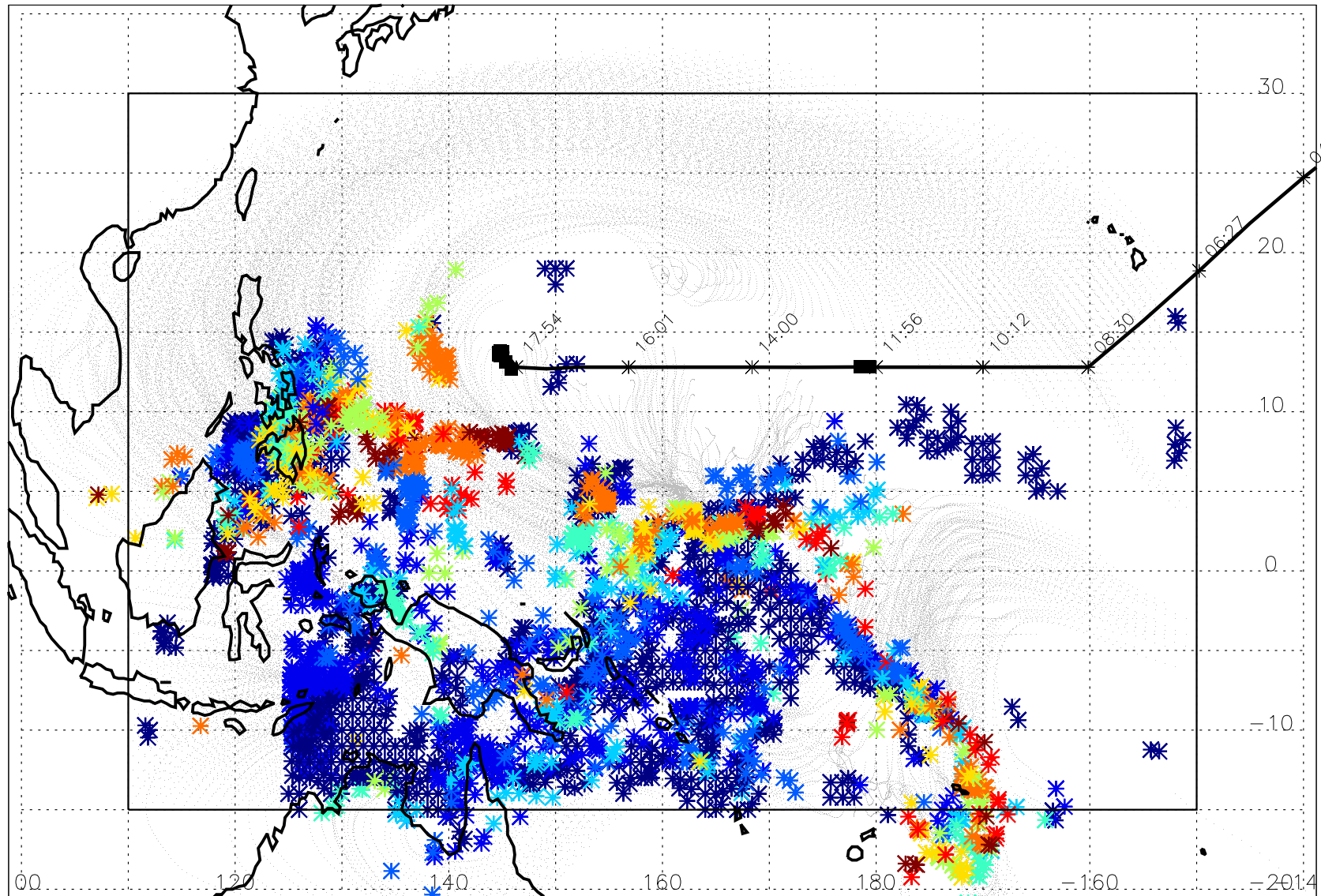
Convectively-influenced 10-day back trajectory at 48 kft level from boxed region on 01/14/2014, 00Z

Fig. 2: Trajectories influenced by most recent convection (asterisks) between 0 and 5.0 days

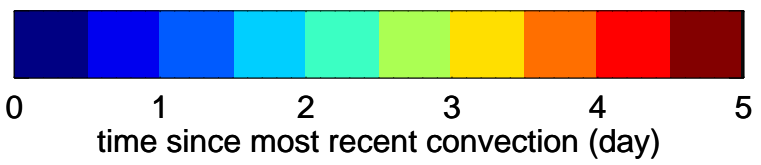


Convectively-influenced 10-day back trajectory at 48 kft level from boxed region on 01/14/2014, 00Z

Fig. 3: Trajectories influenced by most recent convection (asterisks) between 0 and 5.0 days (As Fig. 2 but convection locations only)

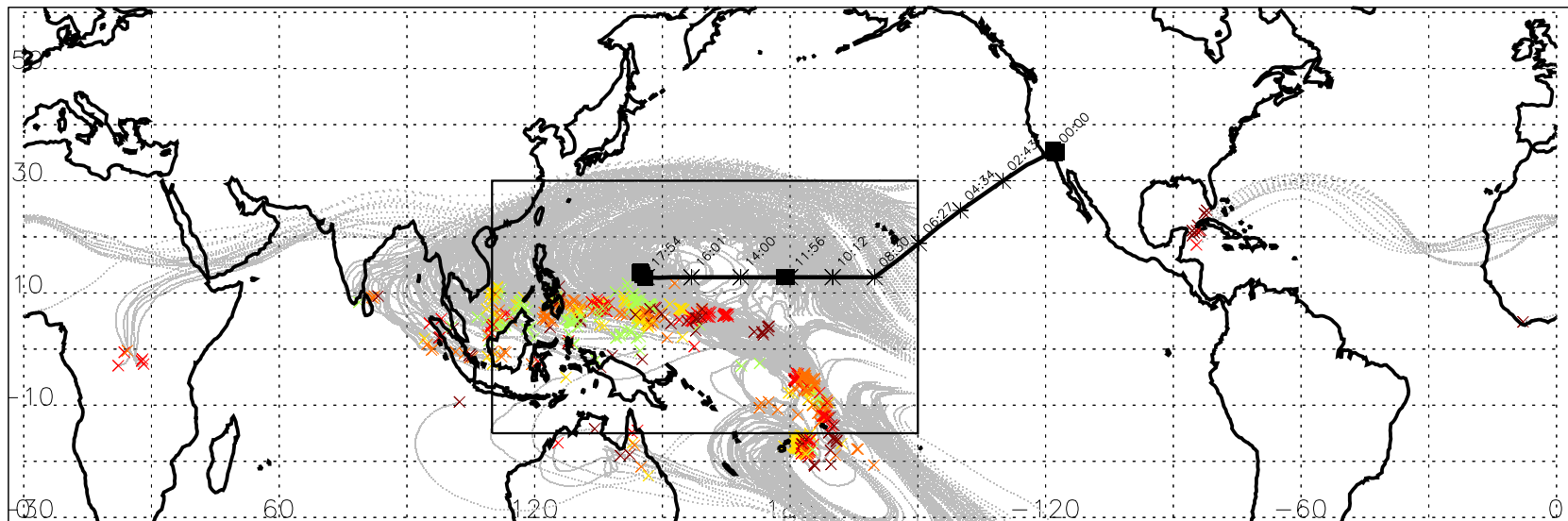
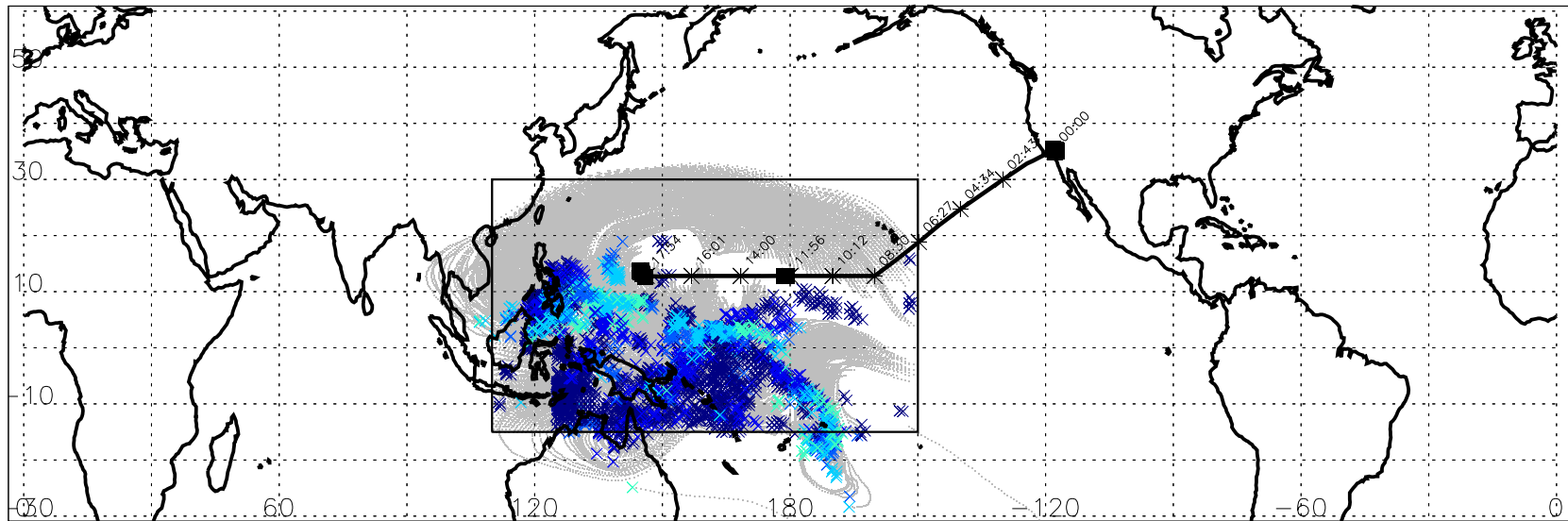


02:43



Convectively-influenced 10-day back trajectory at 48 kft level from boxed region on 01/14/2014, 00Z

Fig. 4: Locations of most recent convection (top: 0 to 5.0 days; bottom: 5.0 to 10 days).



Convectively-influenced 10-day back trajectory at 48 kft level from boxed region on 01/14/2014, 00Z

Fig. 5: Trajectories influenced by most recent convection that occurs outside of boxed region at location X.

