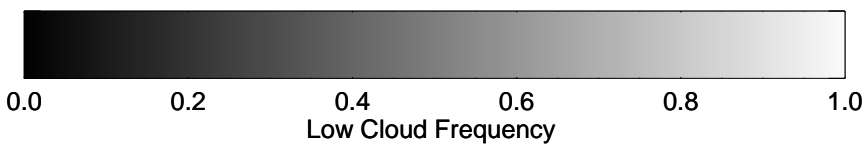
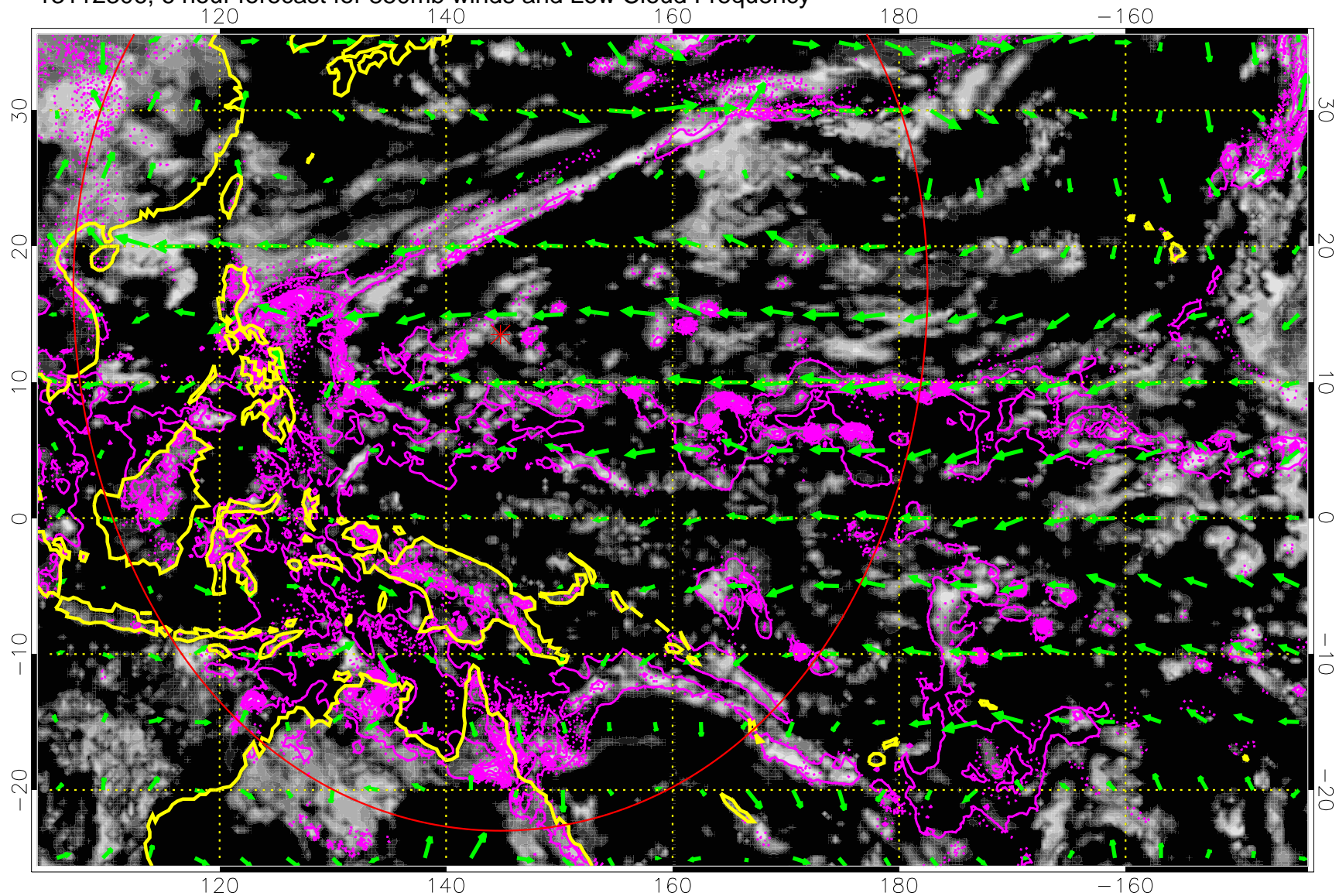


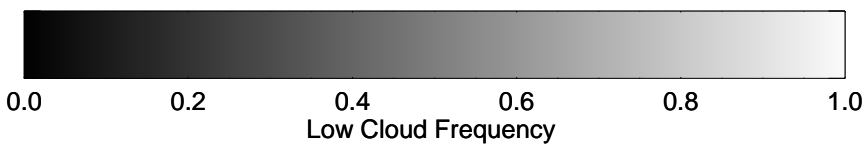
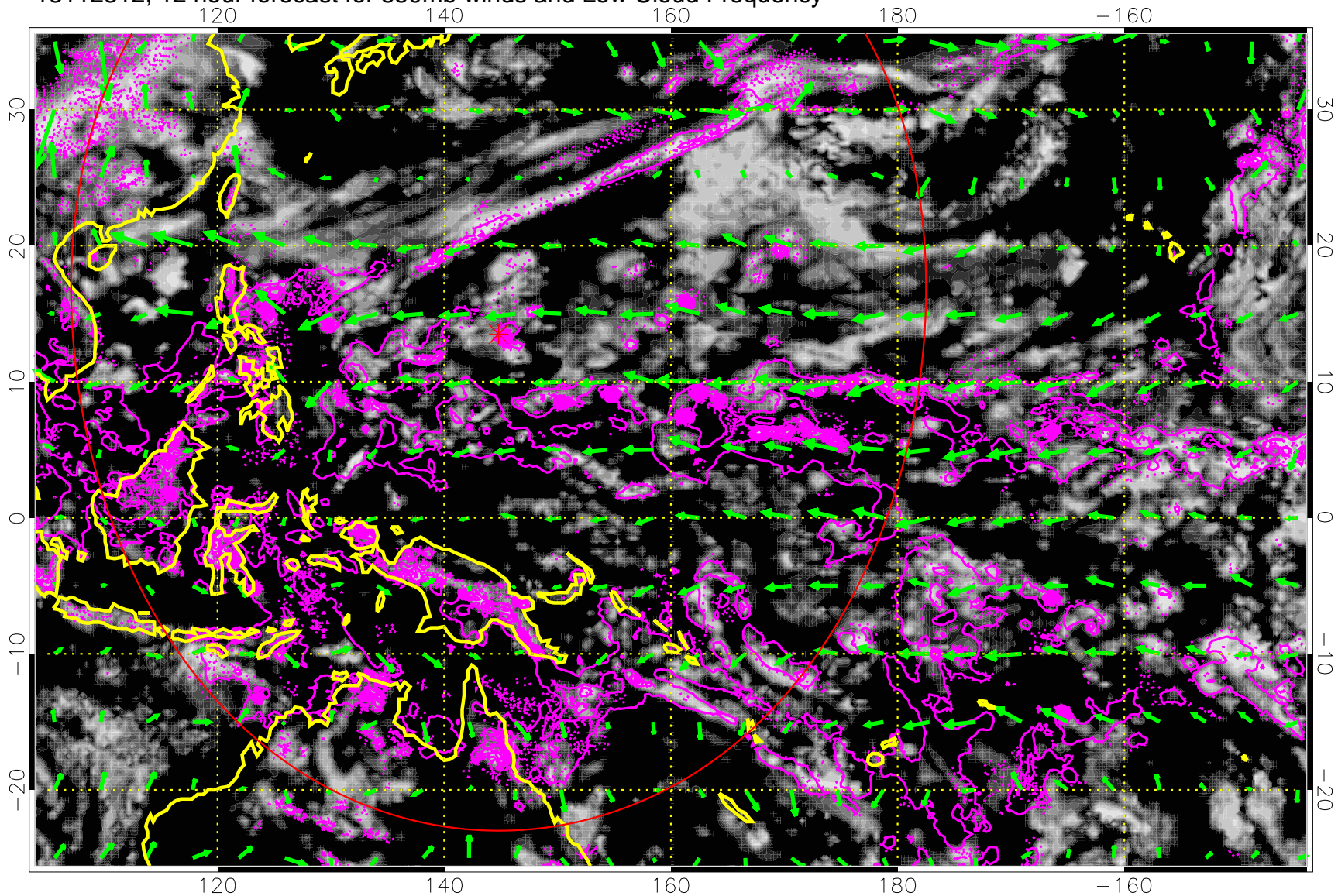
13112306, 6 hour forecast for 850mb winds and Low Cloud Frequency



Precip (tot dot, conv sol) 6 mm/day contours, min 4

→ 30 m/s

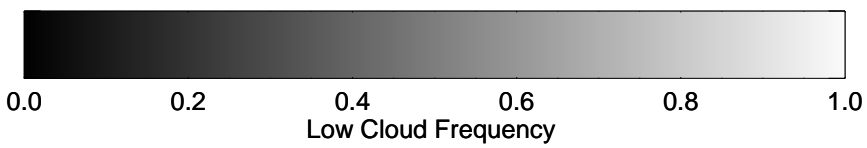
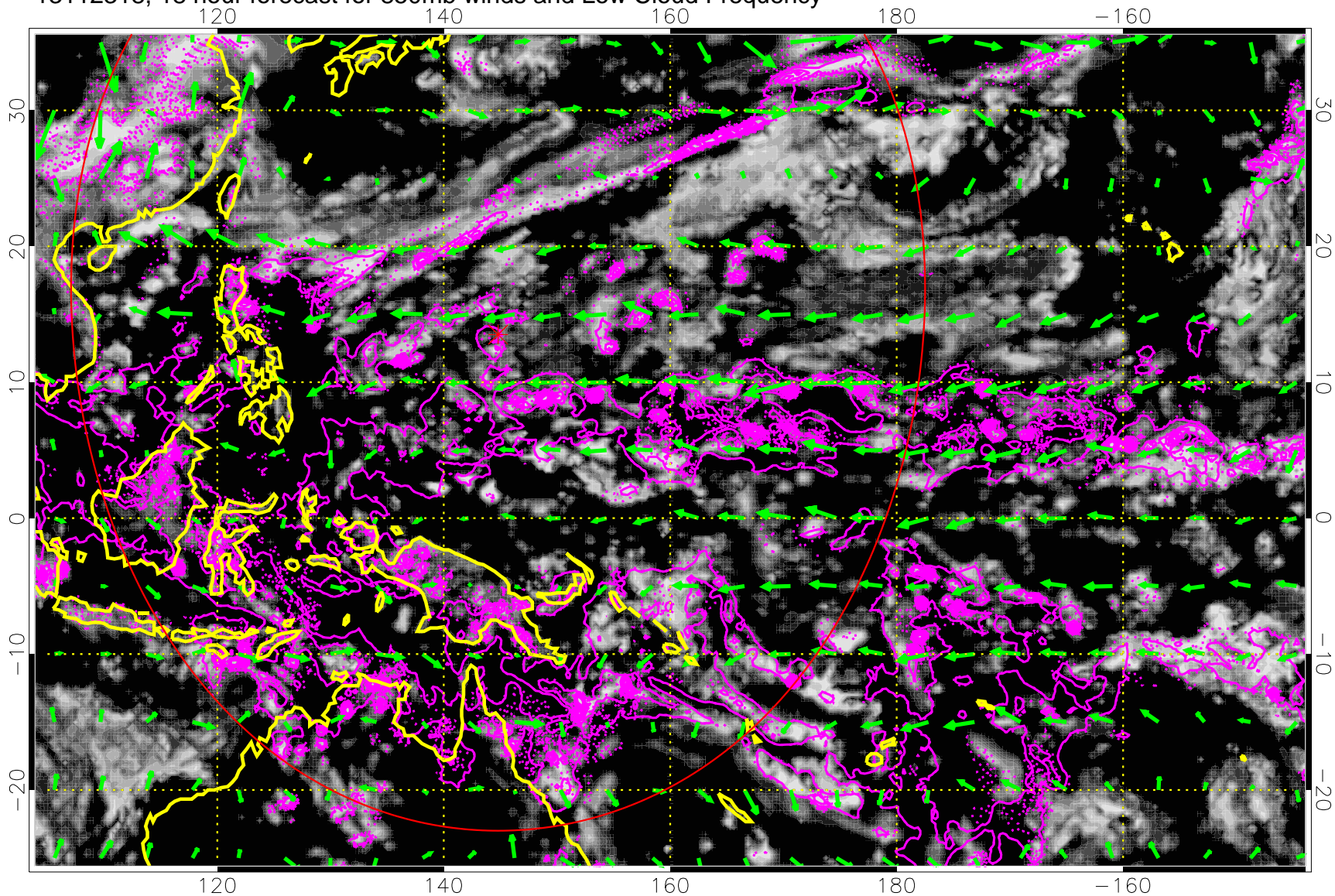
13112312, 12 hour forecast for 850mb winds and Low Cloud Frequency



Precip (tot dot, conv sol) 6 mm/day contours, min 4

→ 30 m/s

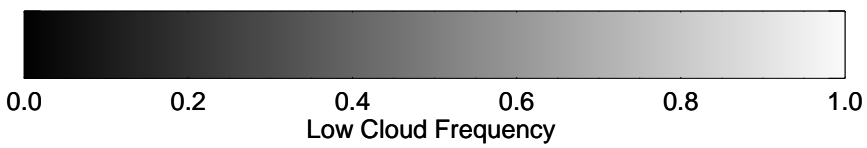
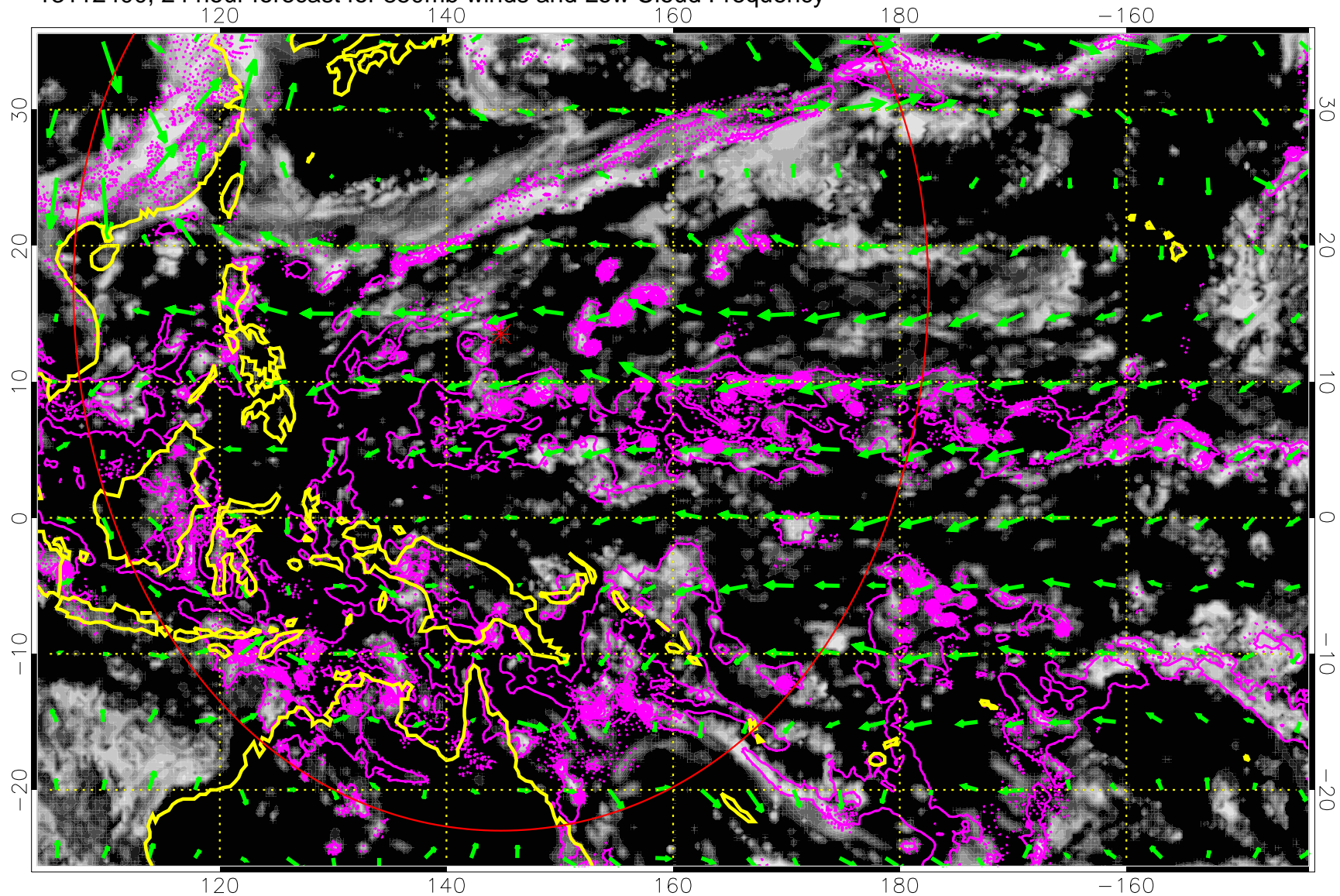
13112318, 18 hour forecast for 850mb winds and Low Cloud Frequency



Precip (tot dot, conv sol) 6 mm/day contours, min 4

→ 30 m/s

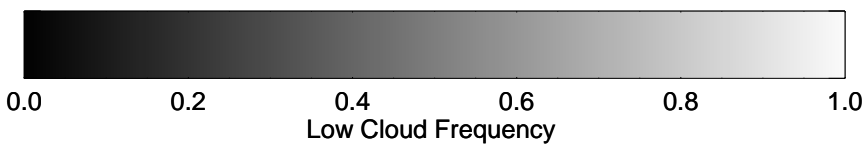
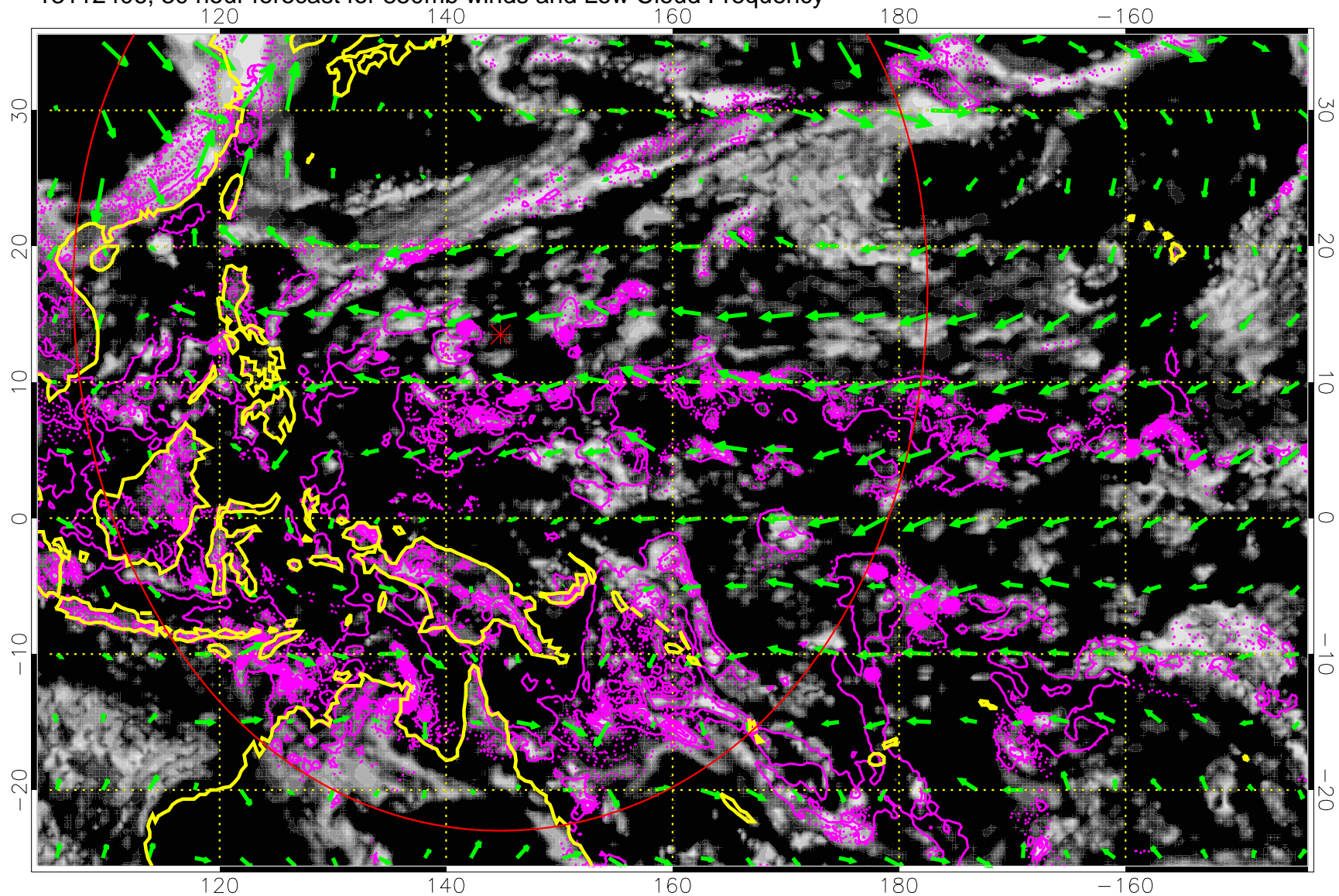
13112400, 24 hour forecast for 850mb winds and Low Cloud Frequency



Precip (tot dot, conv sol) 6 mm/day contours, min 4

→ 30 m/s

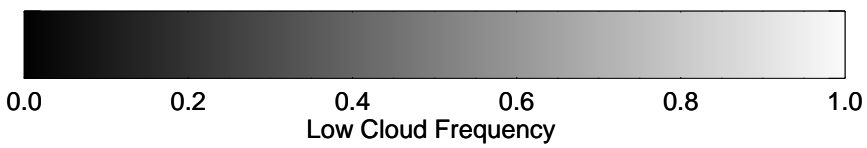
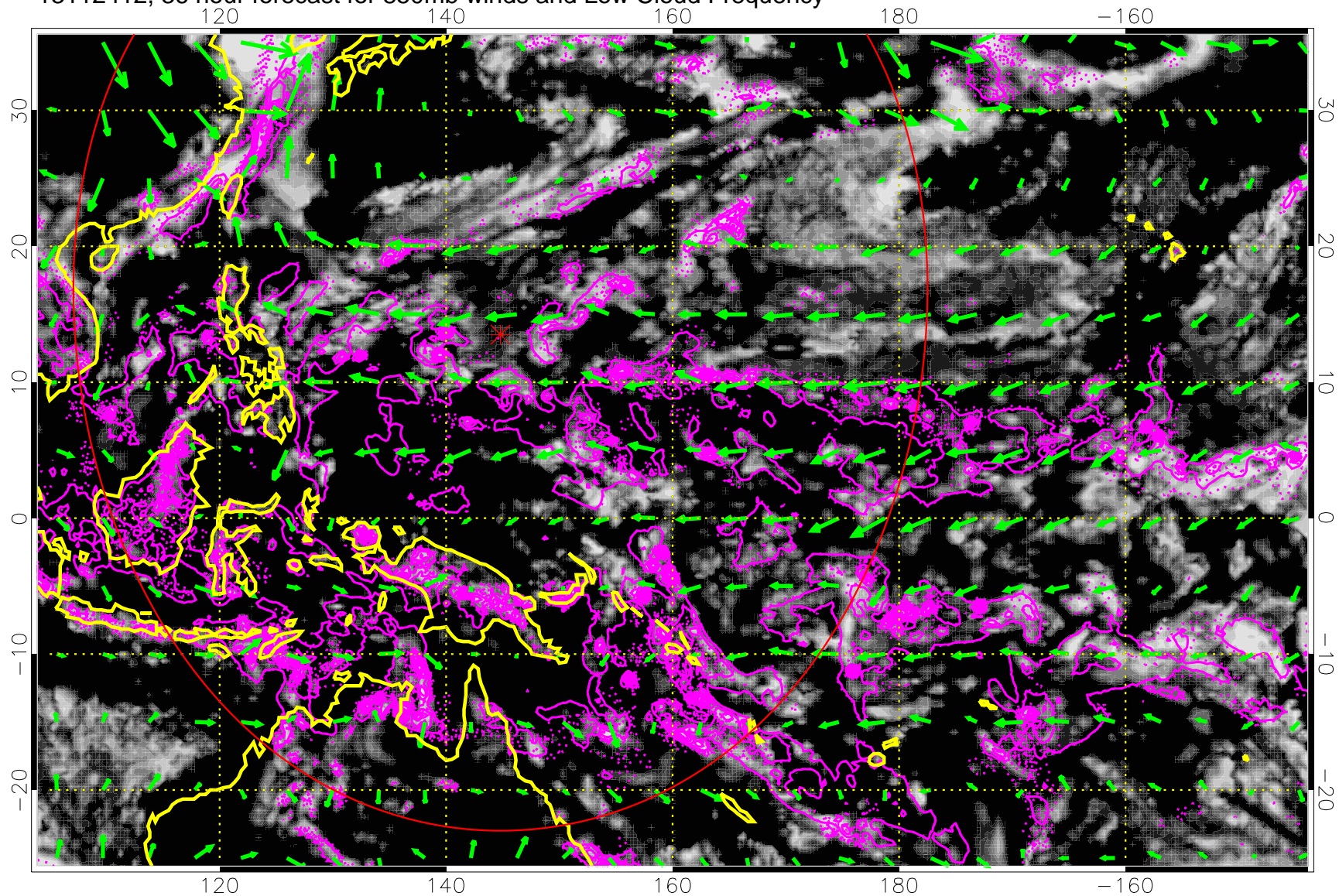
13112406, 30 hour forecast for 850mb winds and Low Cloud Frequency



Precip (tot dot, conv sol) 6 mm/day contours, min 4

→ 30 m/s

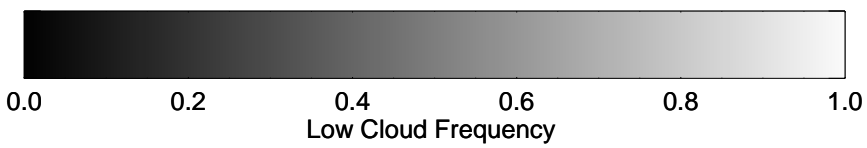
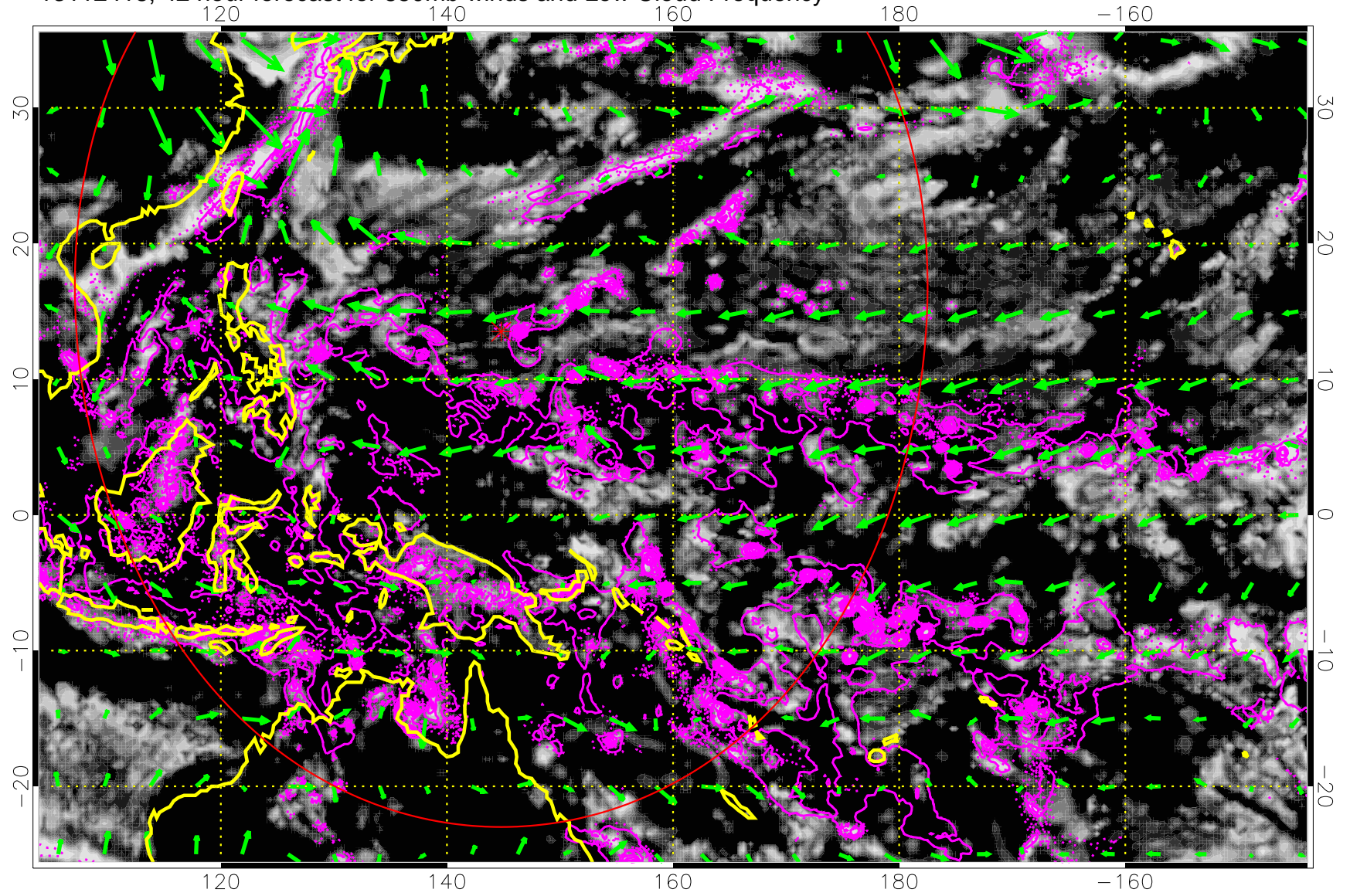
13112412, 36 hour forecast for 850mb winds and Low Cloud Frequency



Precip (tot dot, conv sol) 6 mm/day contours, min 4

→ 30 m/s

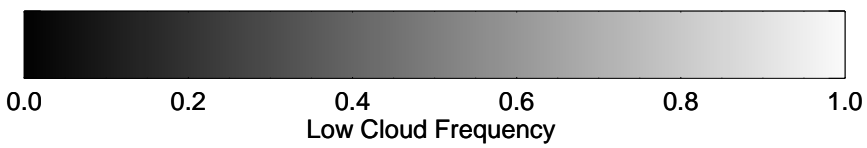
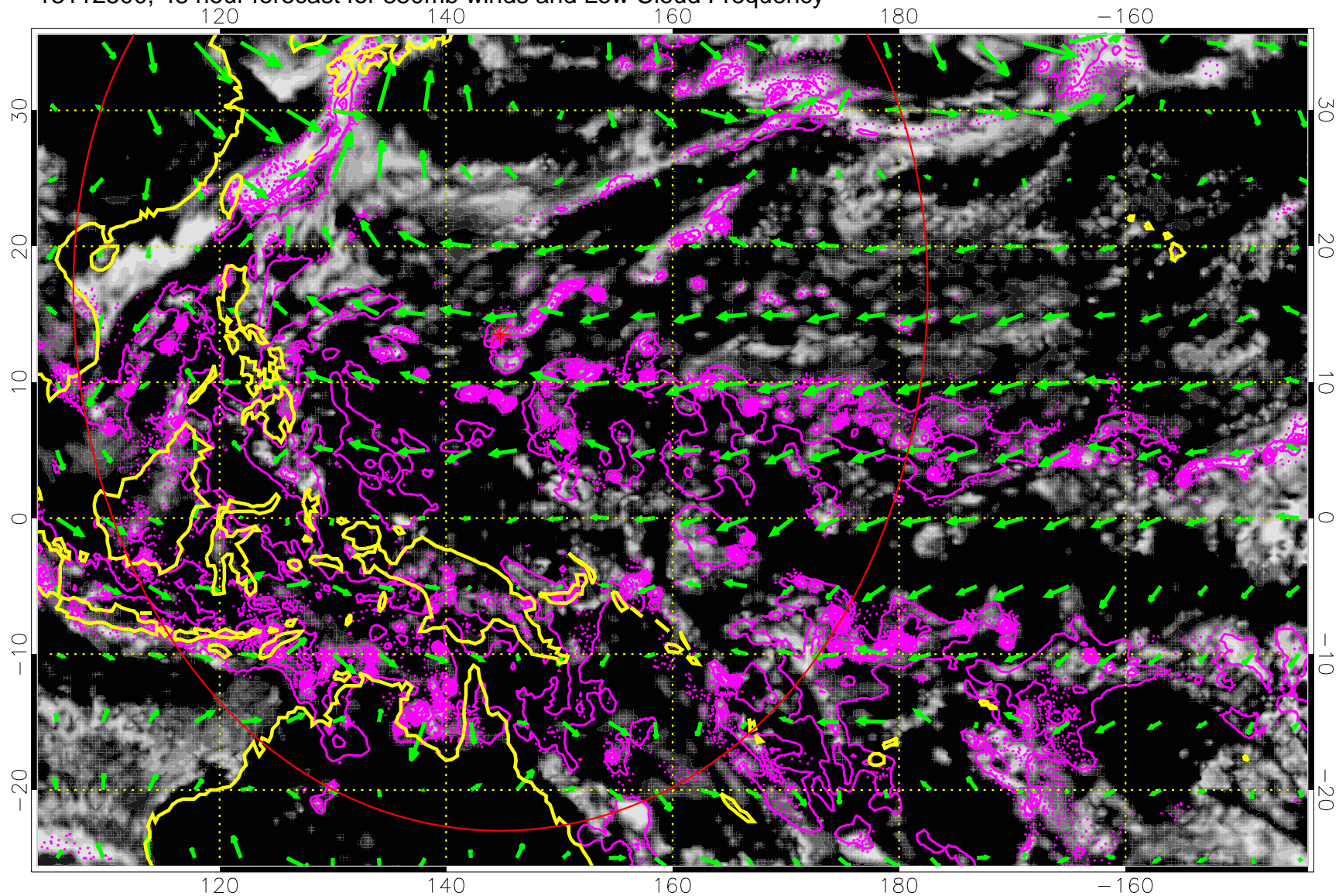
13112418, 42 hour forecast for 850mb winds and Low Cloud Frequency



Precip (tot dot, conv sol) 6 mm/day contours, min 4

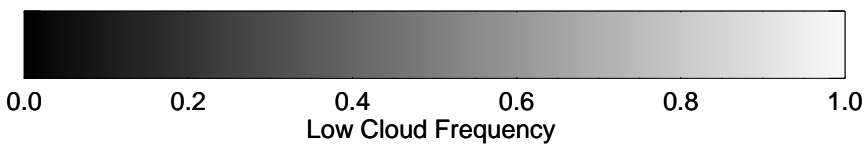
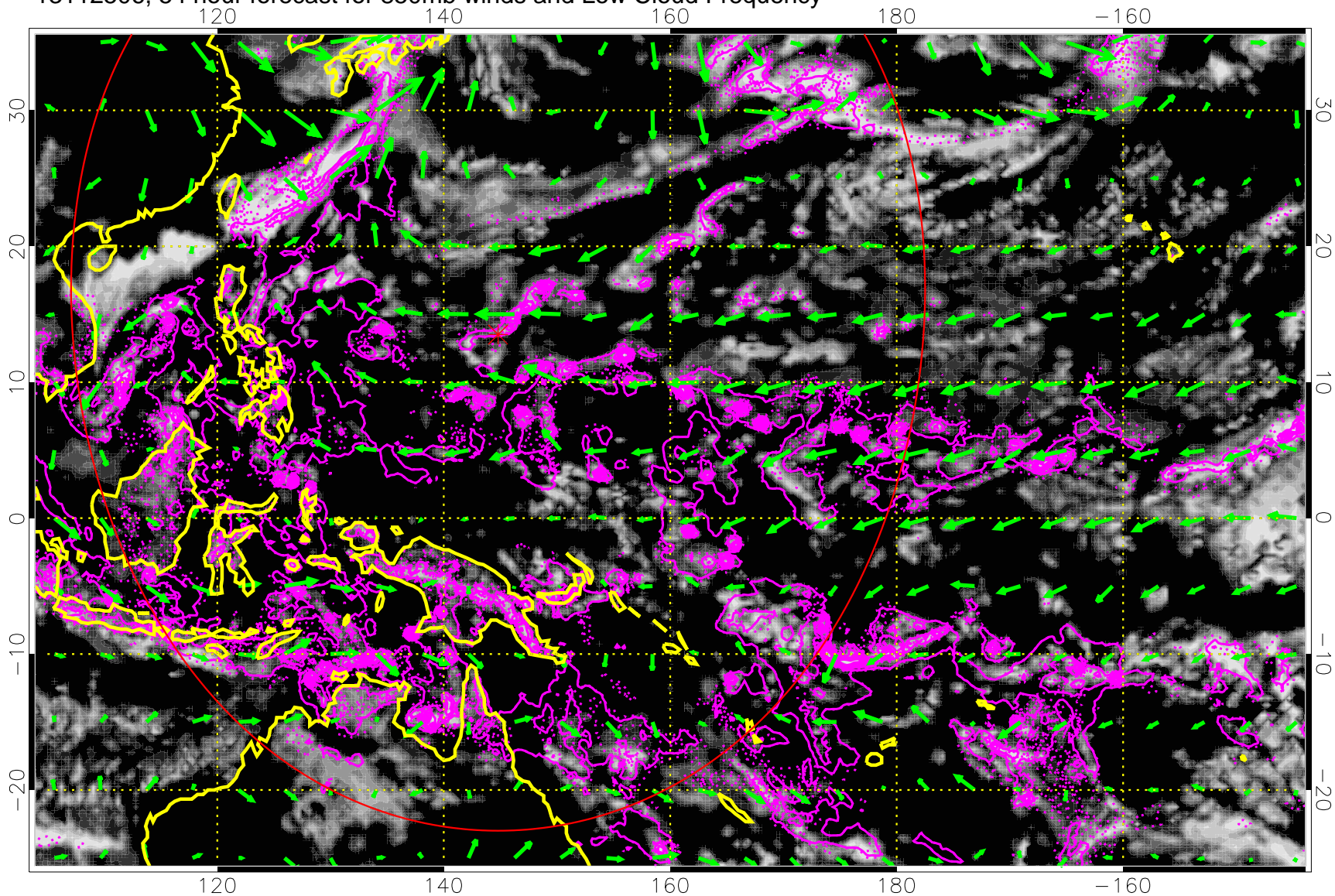
→ 30 m/s

13112500, 48 hour forecast for 850mb winds and Low Cloud Frequency



Precip (tot dot, conv sol) 6 mm/day contours, min 4
→ 30 m/s

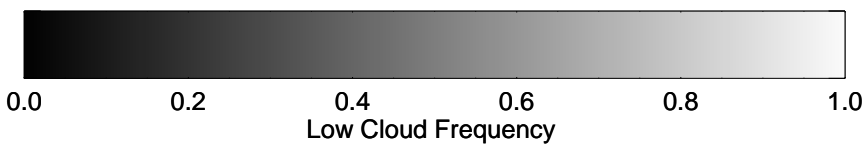
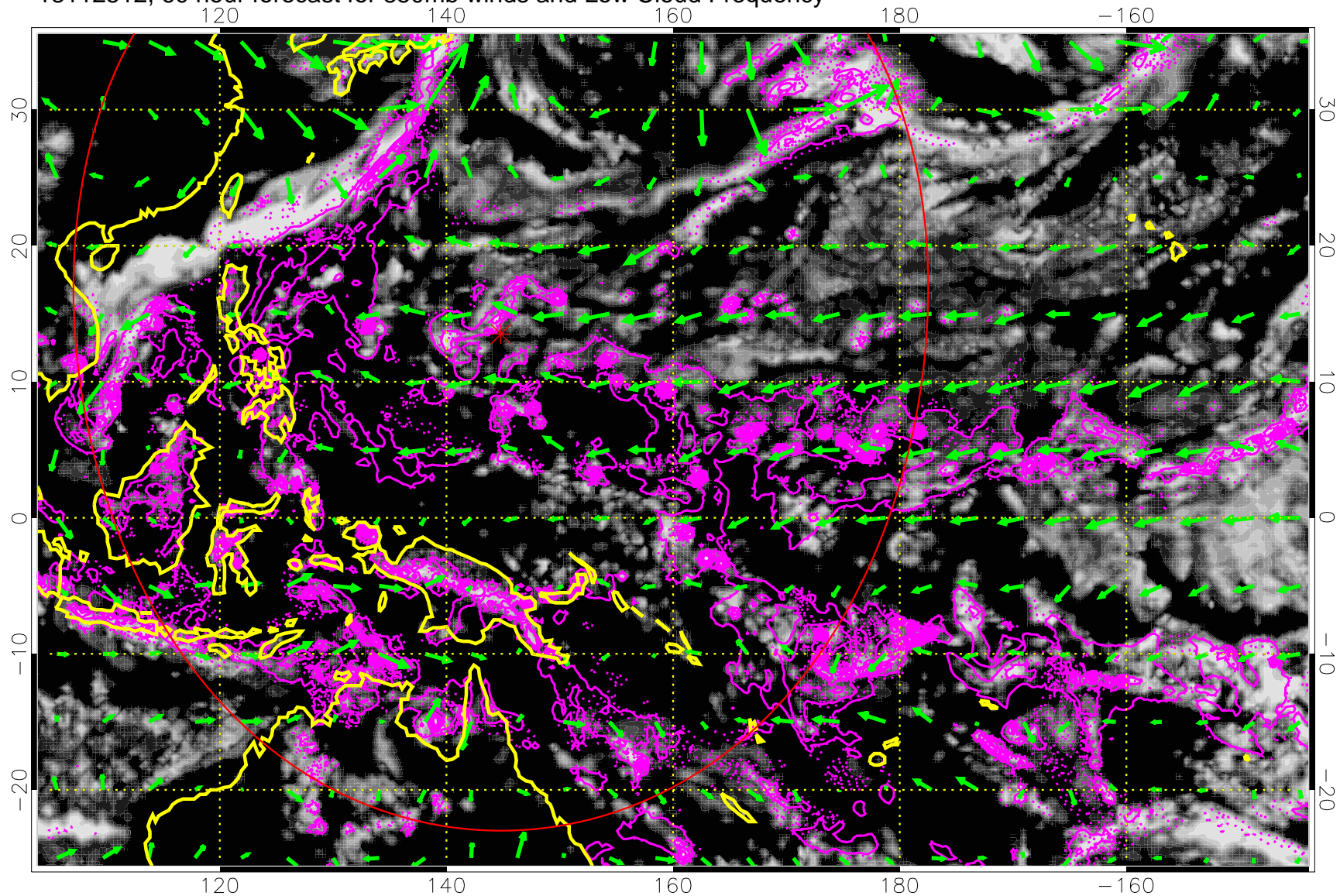
13112506, 54 hour forecast for 850mb winds and Low Cloud Frequency



Precip (tot dot, conv sol) 6 mm/day contours, min 4

→ 30 m/s

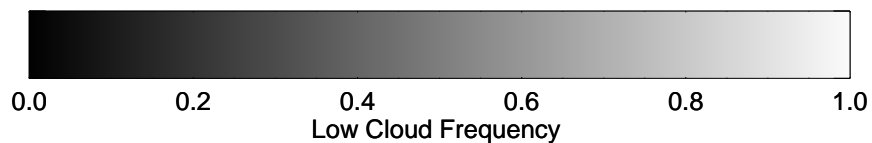
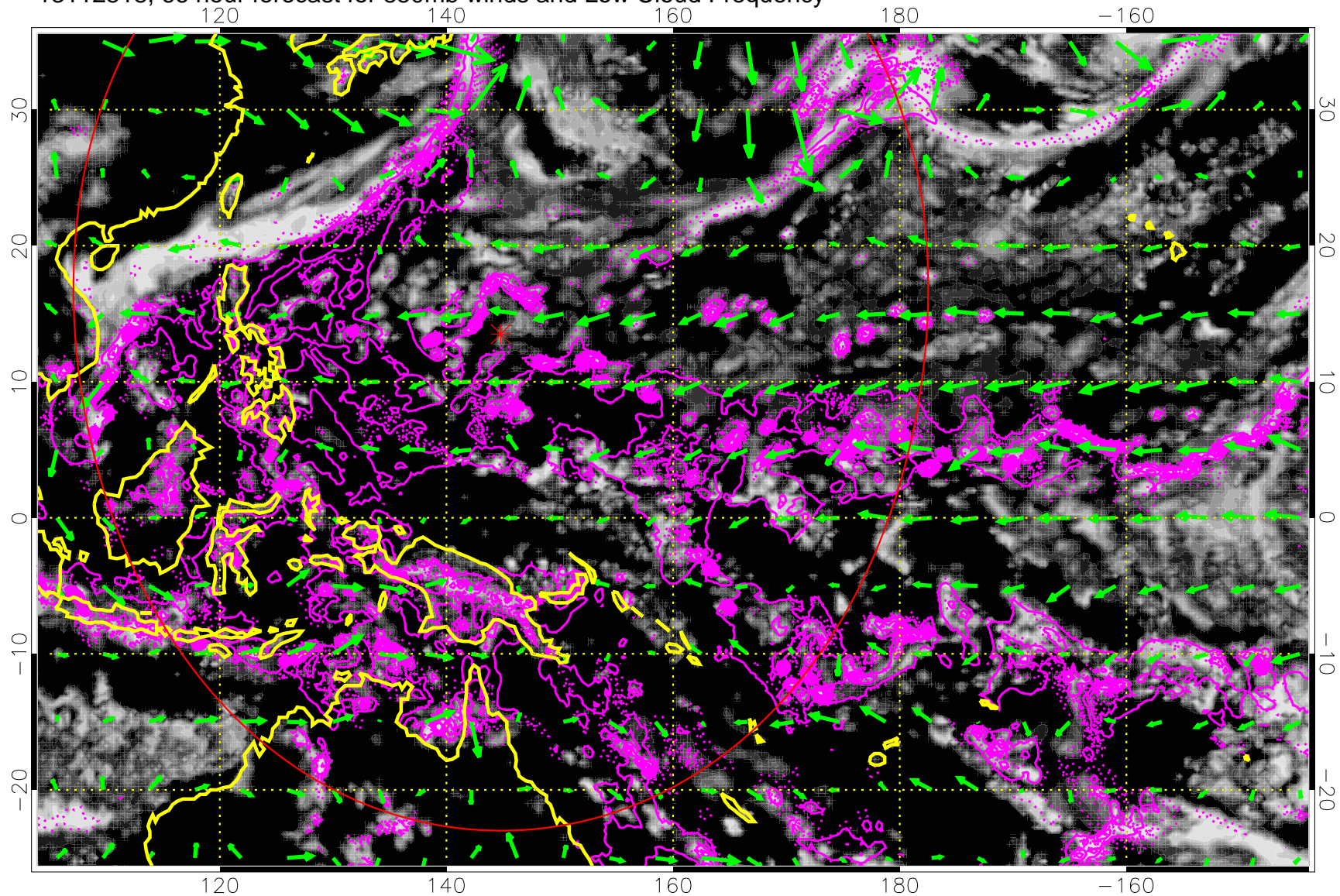
13112512, 60 hour forecast for 850mb winds and Low Cloud Frequency



Precip (tot dot, conv sol) 6 mm/day contours, min 4

→ 30 m/s

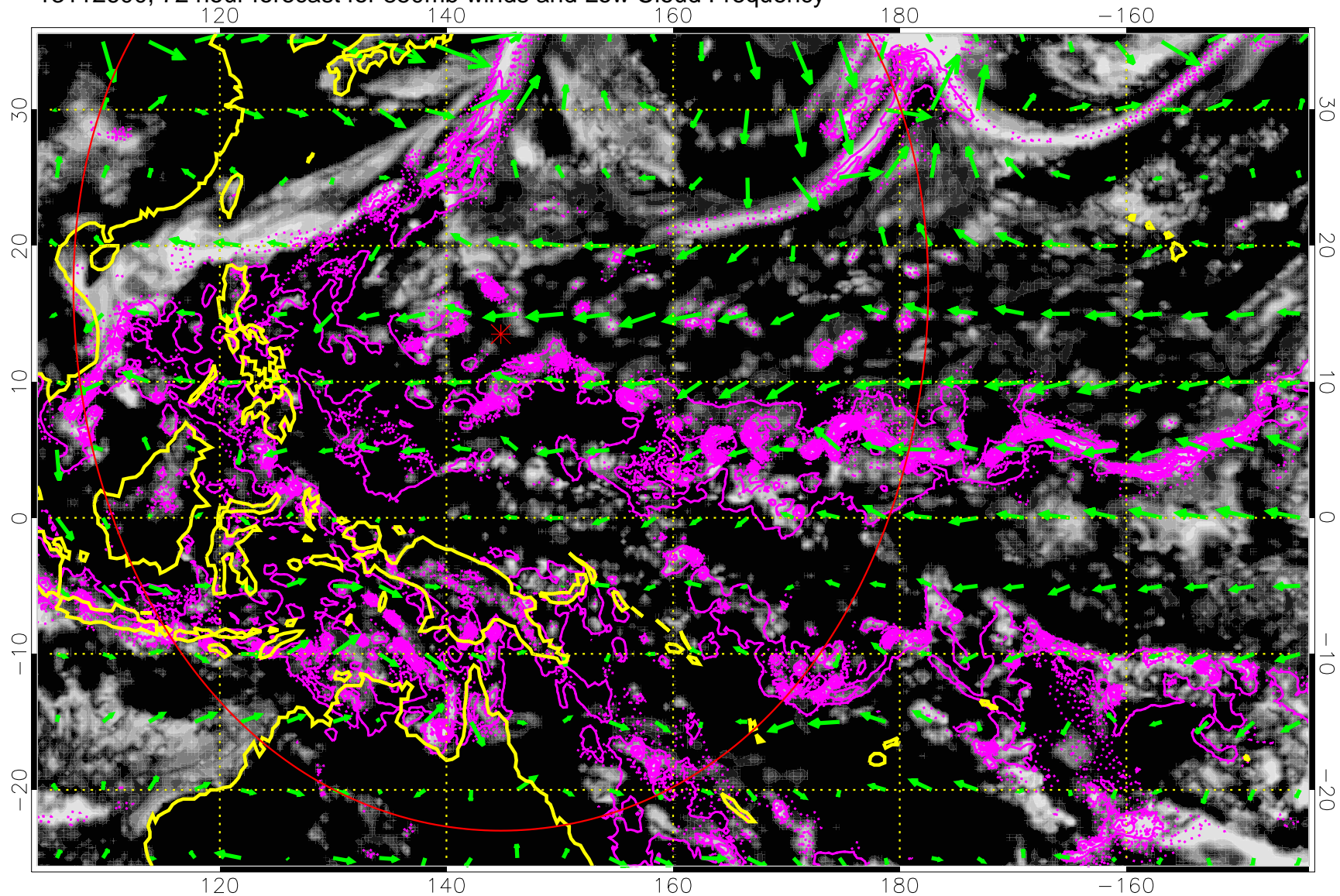
13112518, 66 hour forecast for 850mb winds and Low Cloud Frequency



Precip (tot dot, conv sol) 6 mm/day contours, min 4

→ 30 m/s

13112600, 72 hour forecast for 850mb winds and Low Cloud Frequency

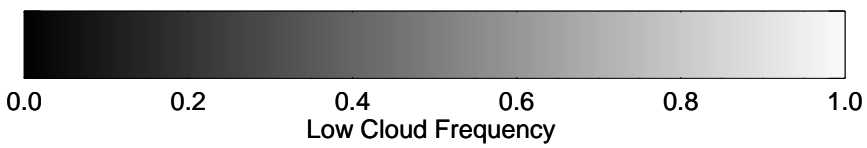
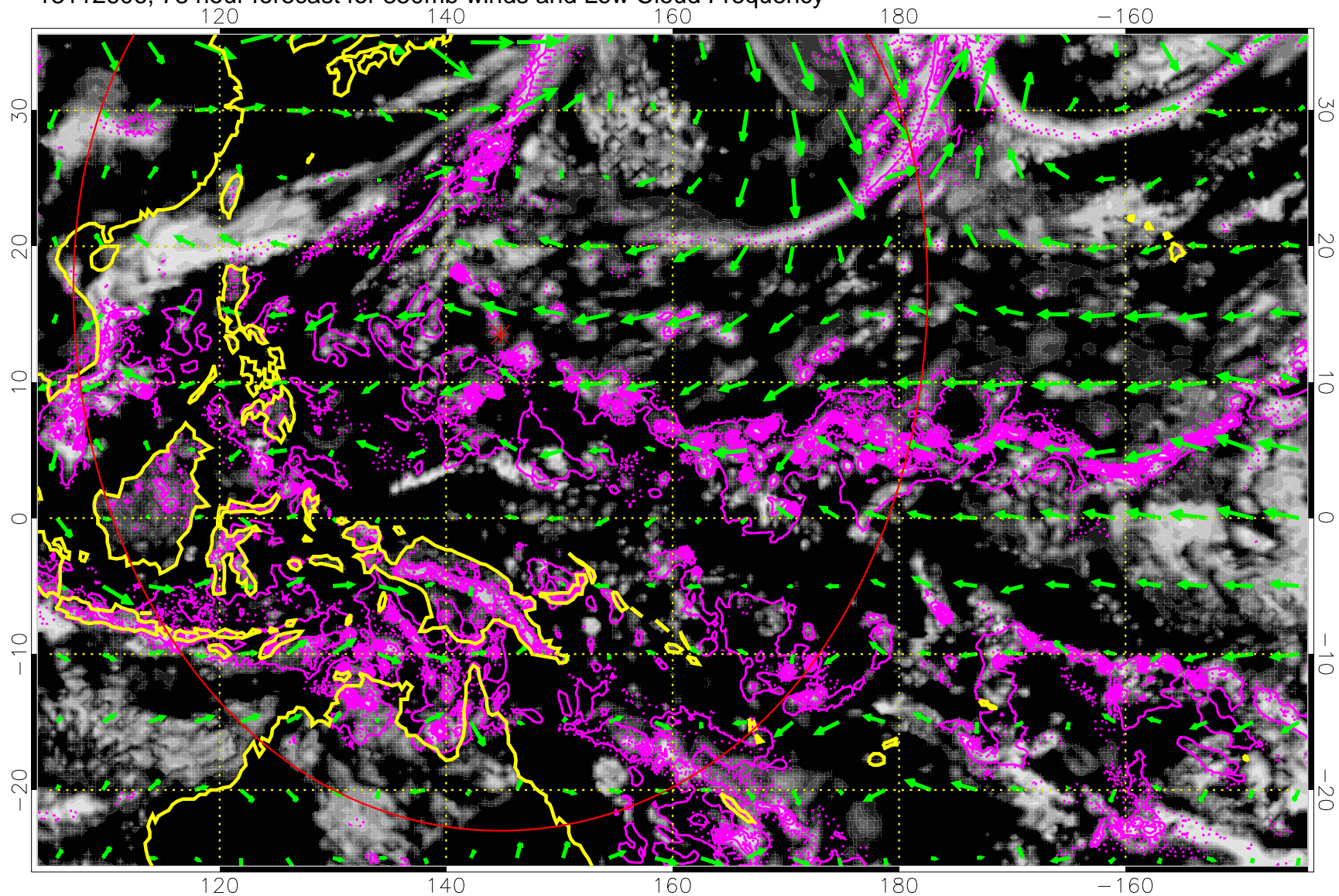


0.0 0.2 0.4 0.6 0.8 1.0
Low Cloud Frequency

Precip (tot dot, conv sol) 6 mm/day contours, min 4

→ 30 m/s

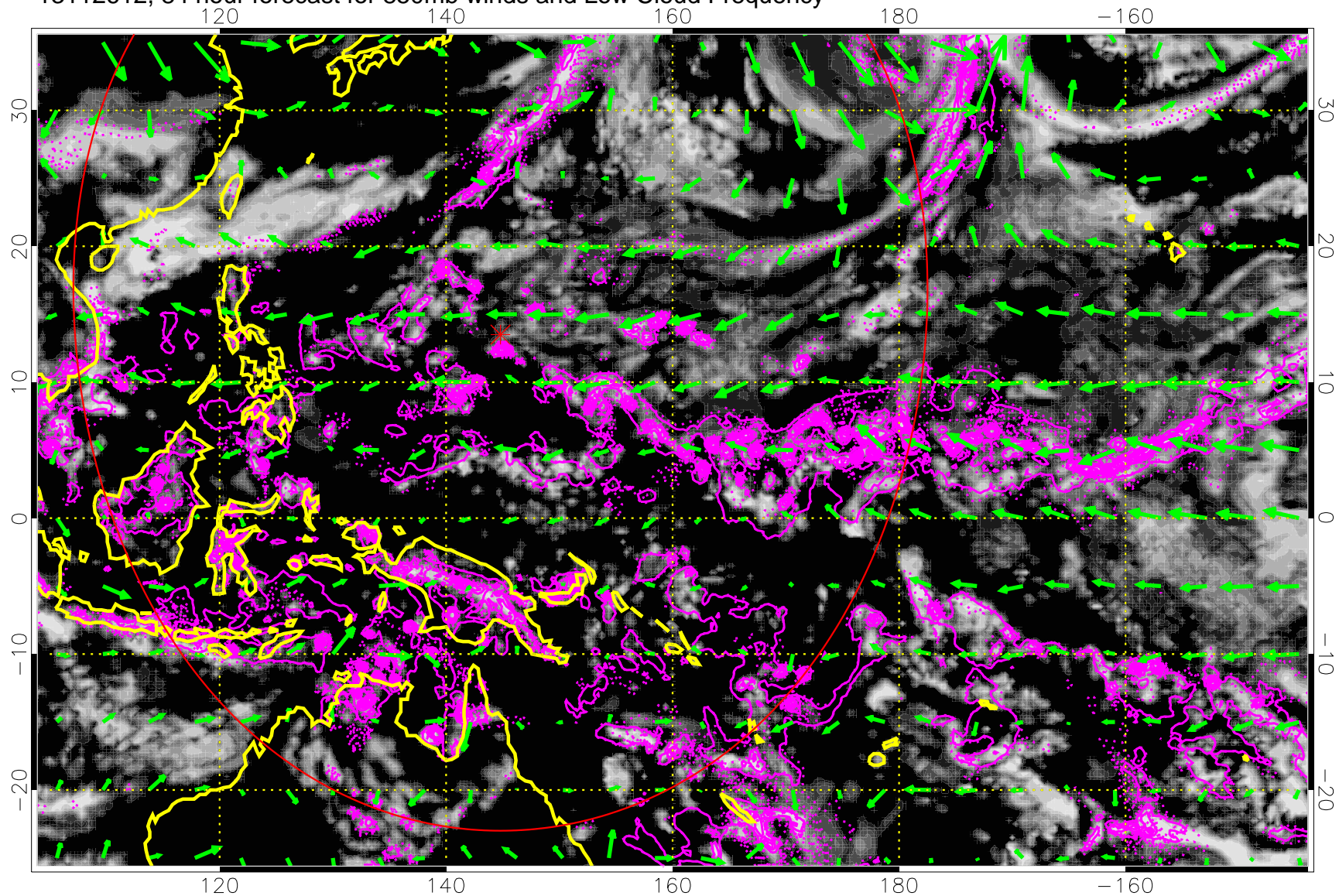
13112606, 78 hour forecast for 850mb winds and Low Cloud Frequency



Precip (tot dot, conv sol) 6 mm/day contours, min 4

→ 30 m/s

13112612, 84 hour forecast for 850mb winds and Low Cloud Frequency

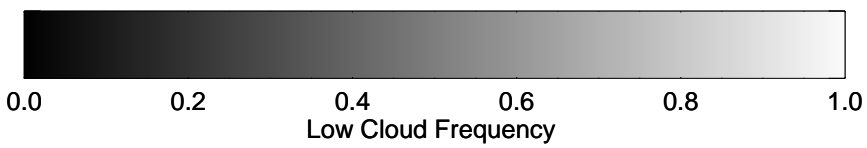
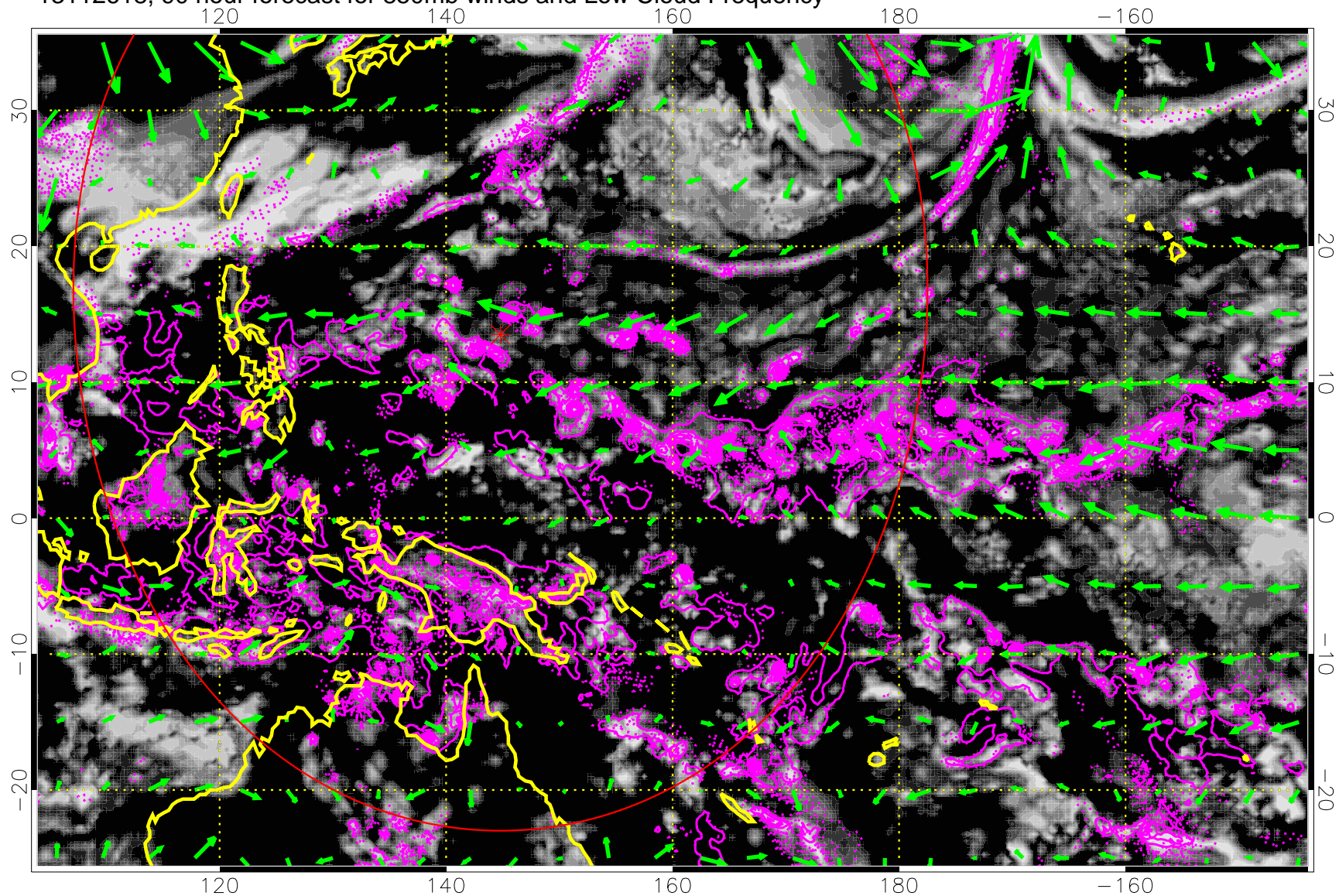


0.0 0.2 0.4 0.6 0.8 1.0
Low Cloud Frequency

Precip (tot dot, conv sol) 6 mm/day contours, min 4

→ 30 m/s

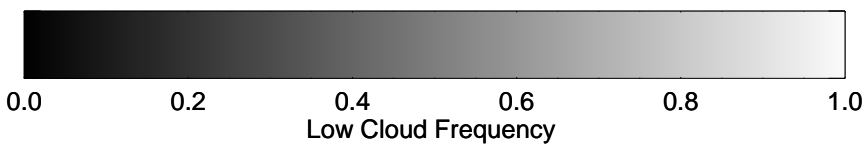
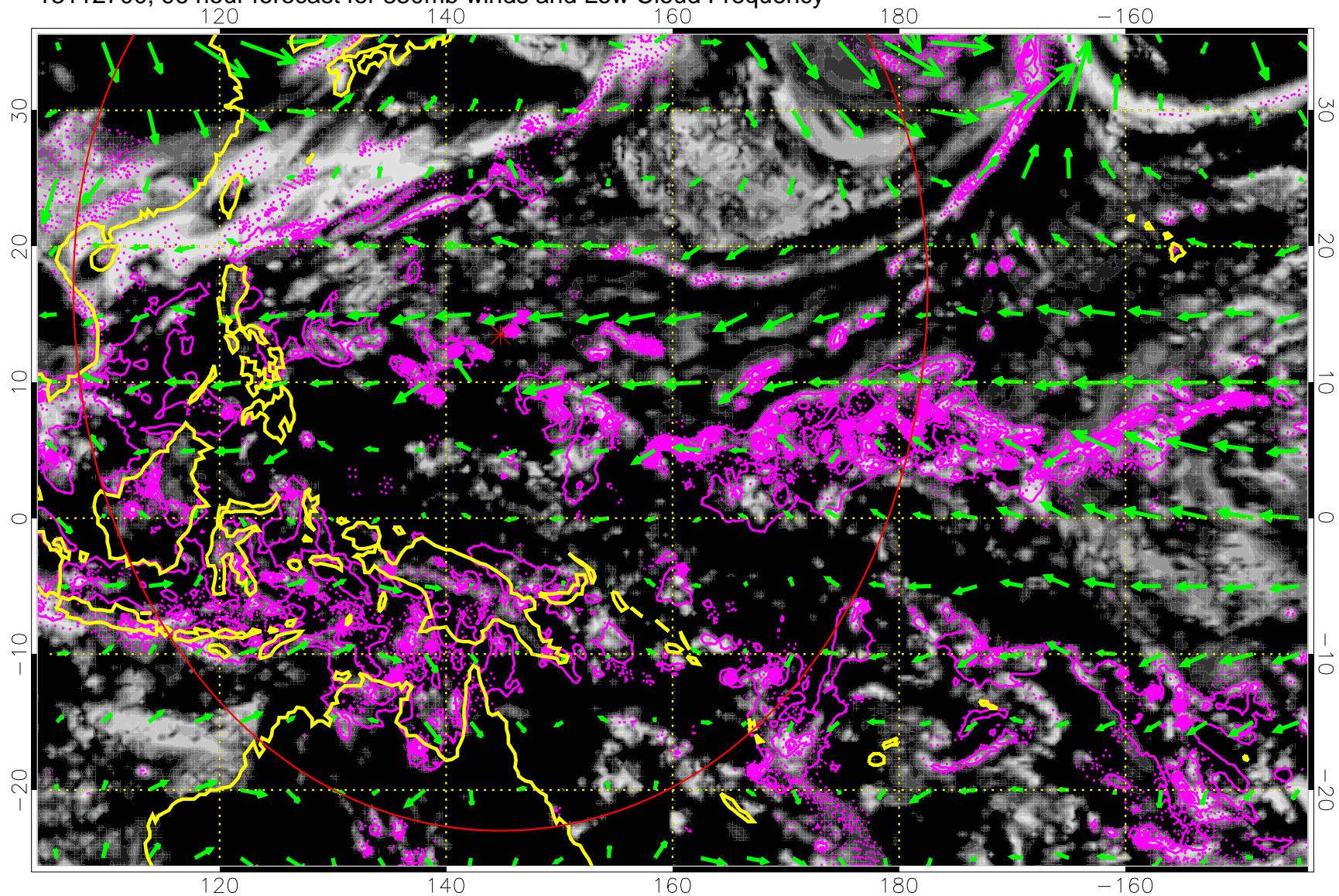
13112618, 90 hour forecast for 850mb winds and Low Cloud Frequency



Precip (tot dot, conv sol) 6 mm/day contours, min 4

→ 30 m/s

13112700, 96 hour forecast for 850mb winds and Low Cloud Frequency

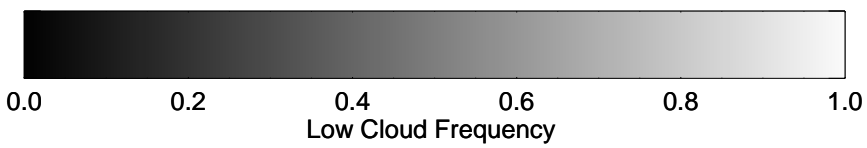
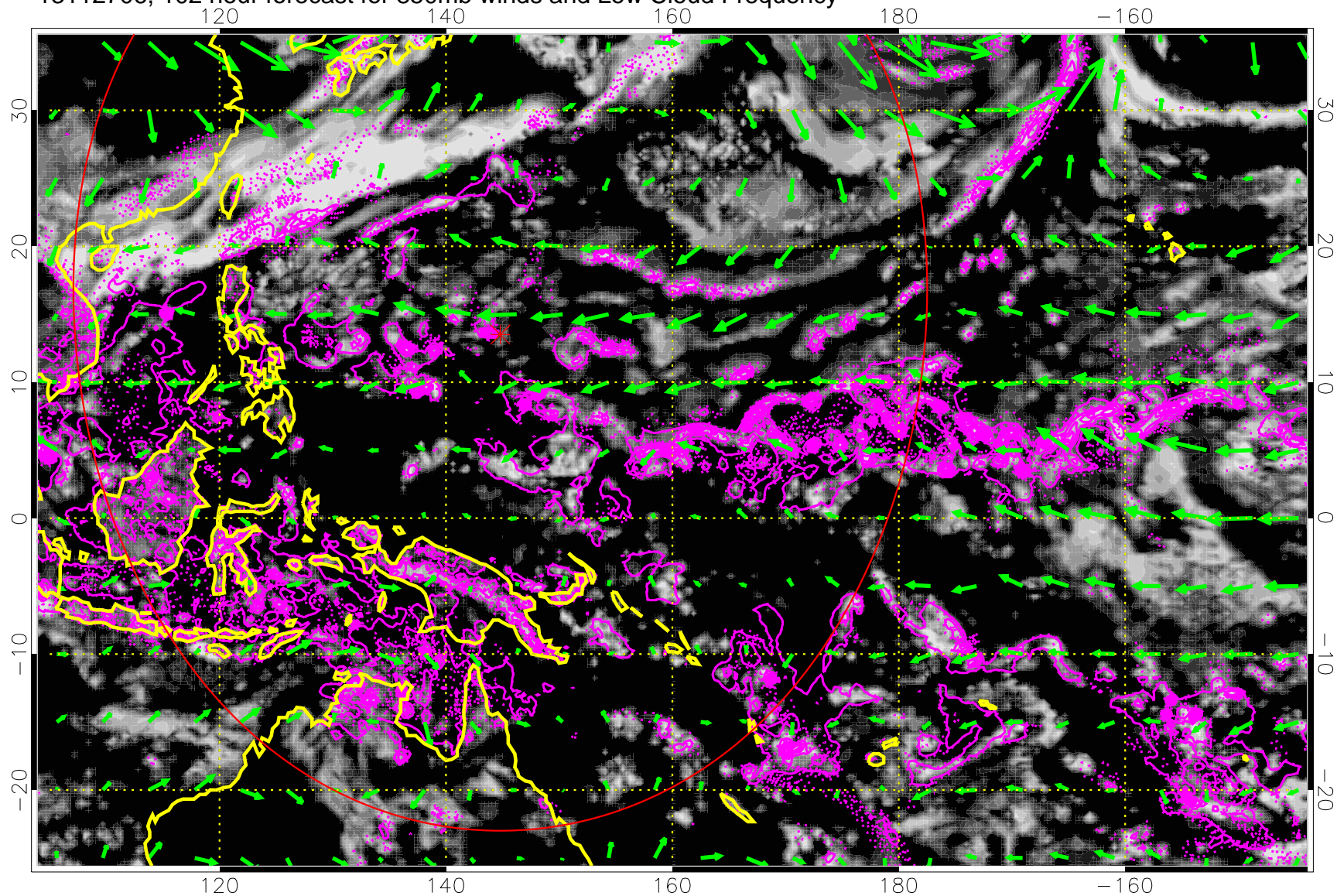


Low Cloud Frequency

Precip (tot dot, conv sol) 6 mm/day contours, min 4

→ 30 m/s

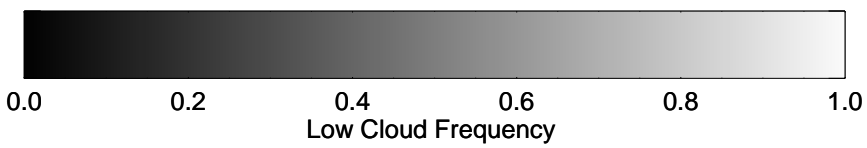
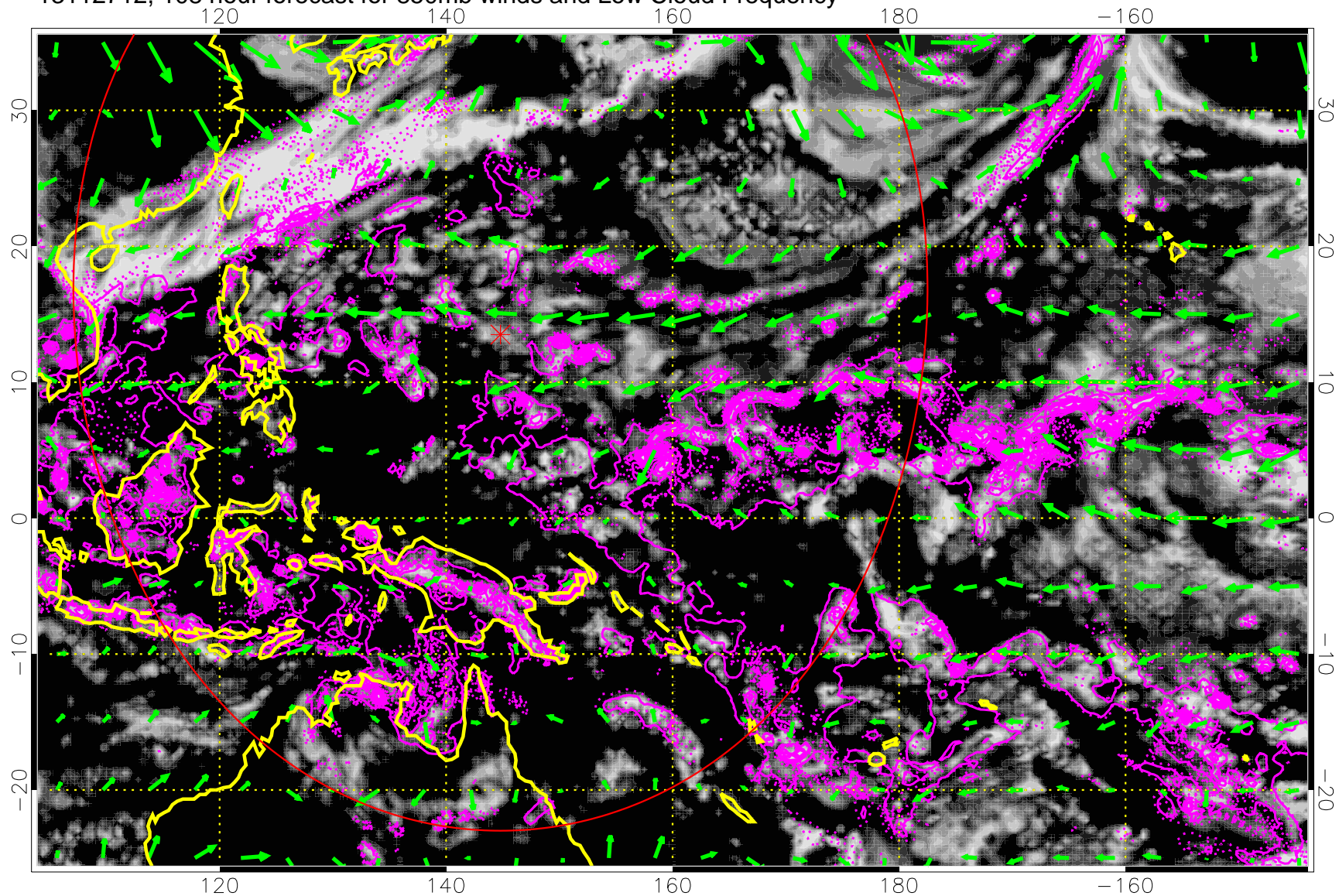
13112706, 102 hour forecast for 850mb winds and Low Cloud Frequency



Precip (tot dot, conv sol) 6 mm/day contours, min 4

→ 30 m/s

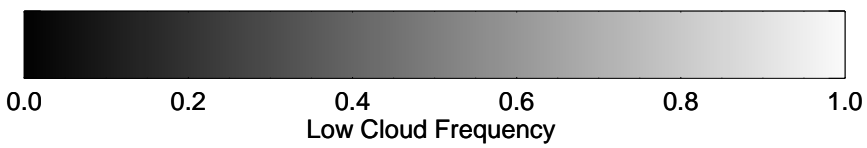
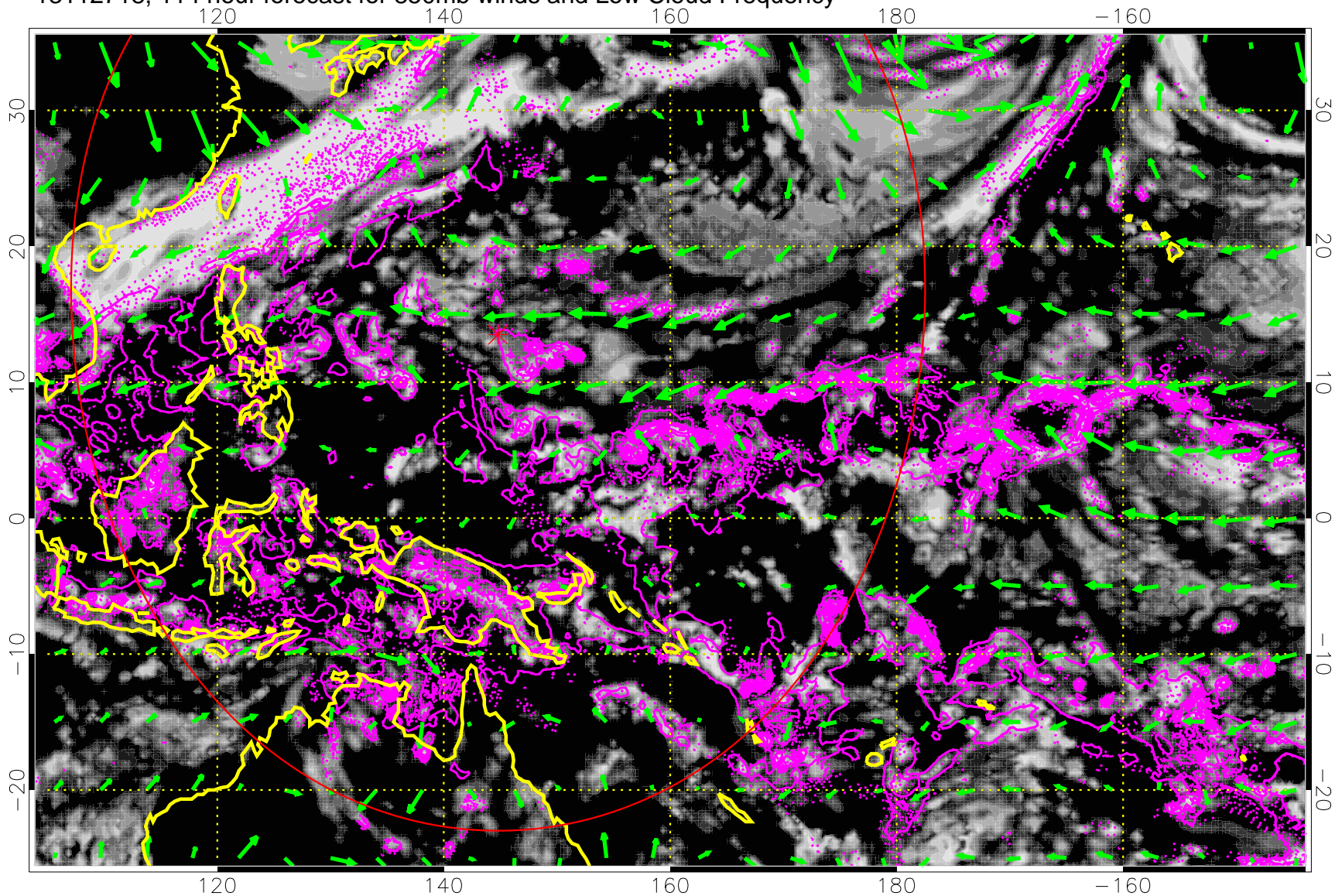
13112712, 108 hour forecast for 850mb winds and Low Cloud Frequency



Precip (tot dot, conv sol) 6 mm/day contours, min 4

→ 30 m/s

13112718, 114 hour forecast for 850mb winds and Low Cloud Frequency



Low Cloud Frequency

Precip (tot dot, conv sol) 6 mm/day contours, min 4

→ 30 m/s