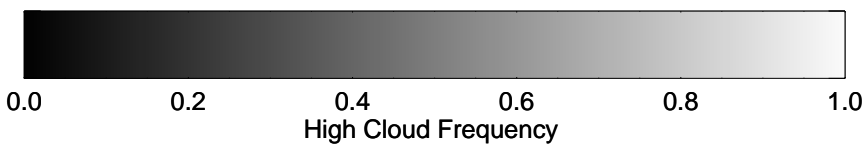
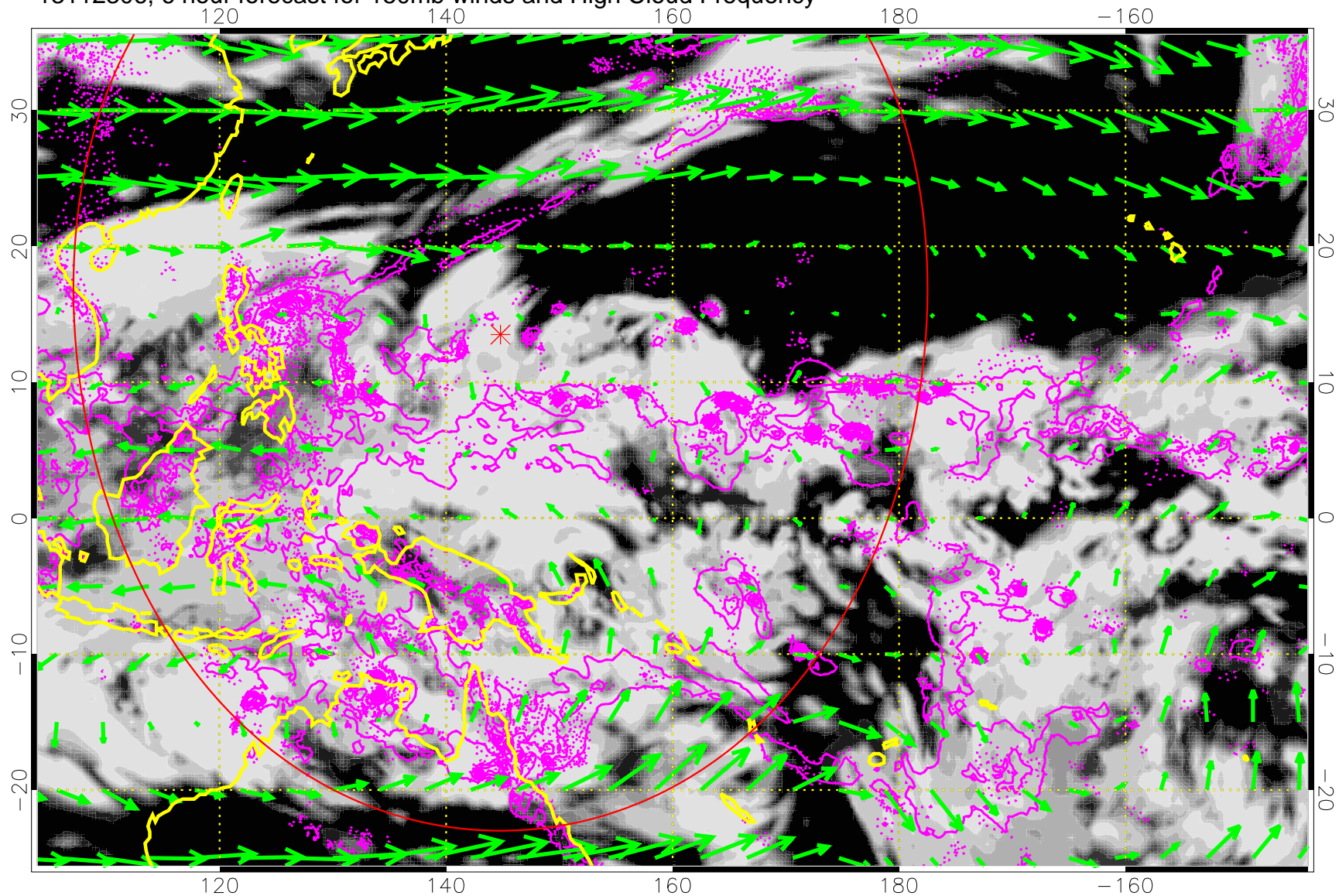


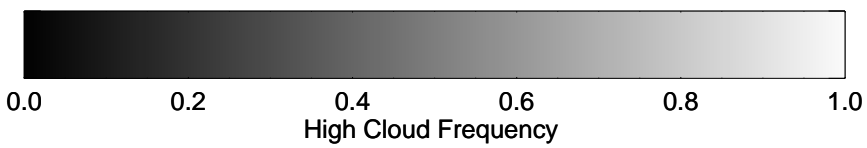
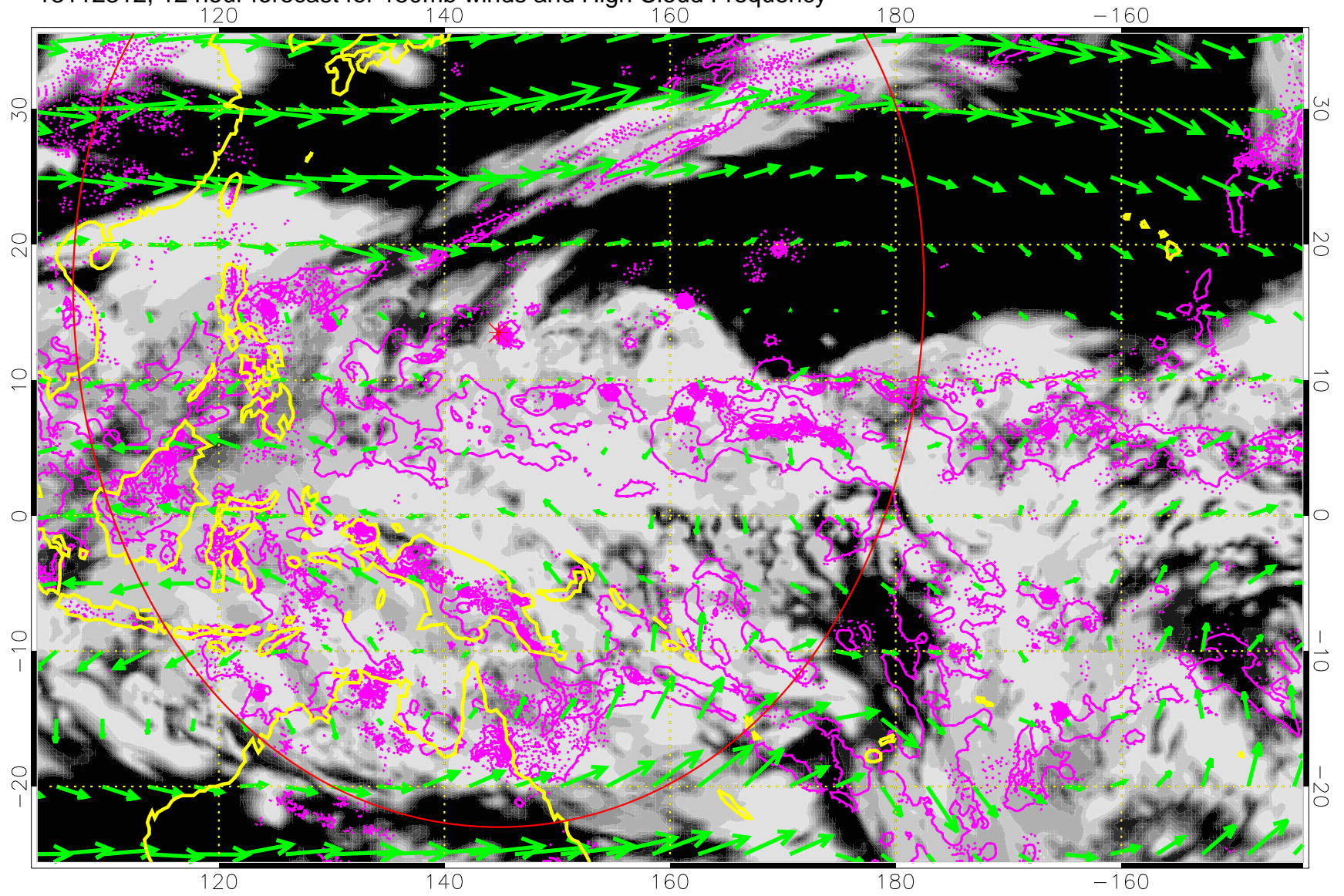
13112306, 6 hour forecast for 150mb winds and High Cloud Frequency



Precip (tot dot, conv sol) 6 mm/day contours, min 4

→ 50 m/s

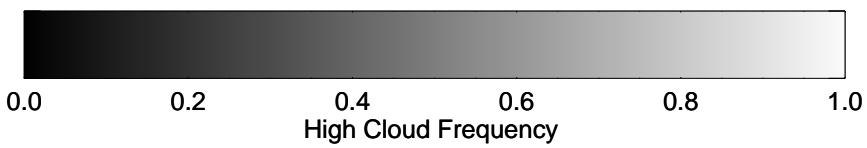
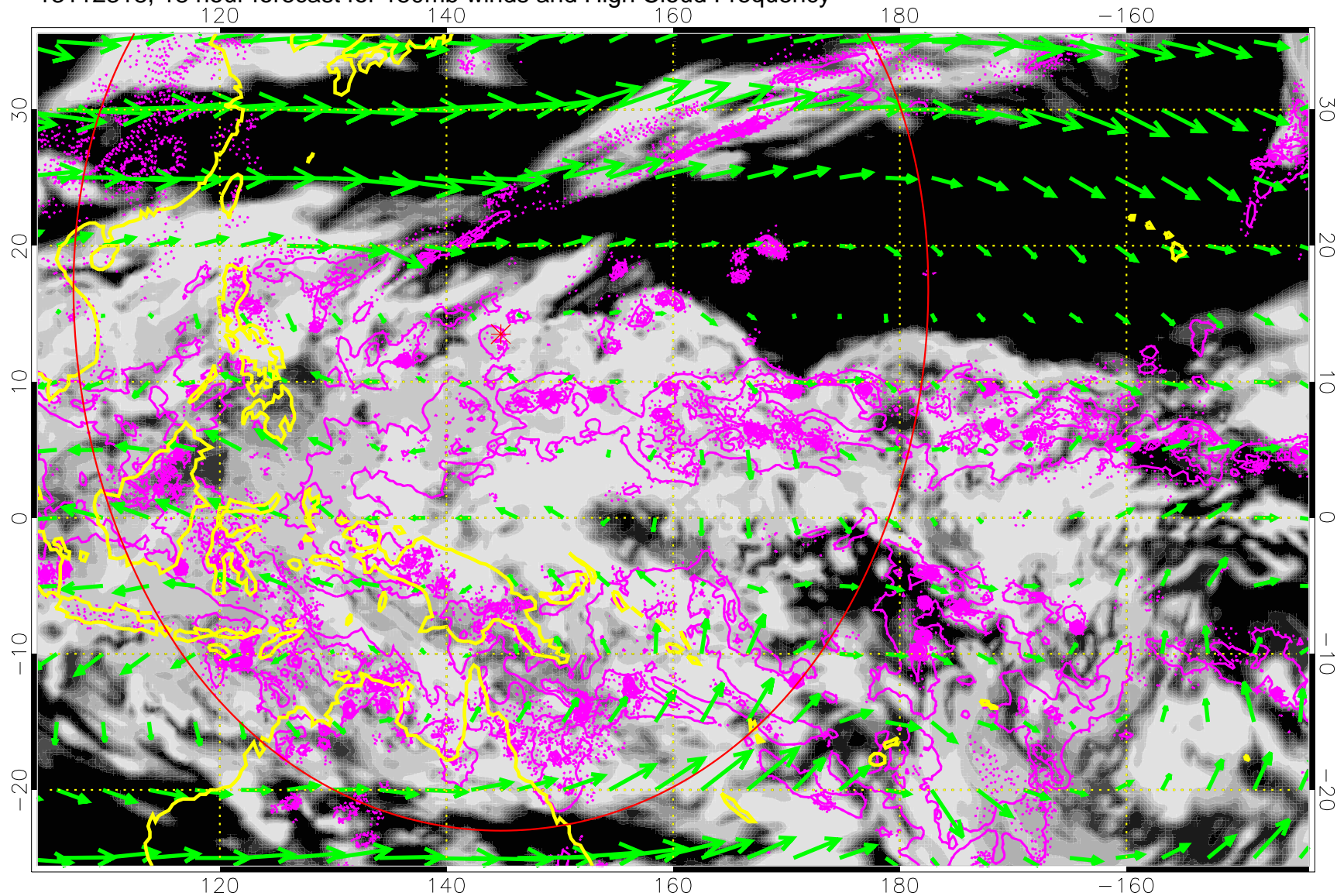
13112312, 12 hour forecast for 150mb winds and High Cloud Frequency



Precip (tot dot, conv sol) 6 mm/day contours, min 4

→ 50 m/s

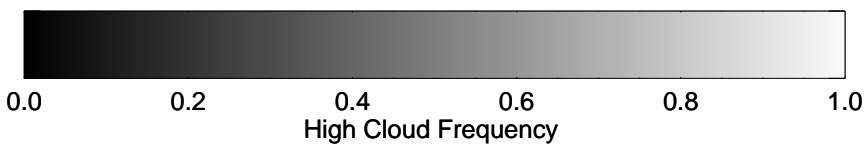
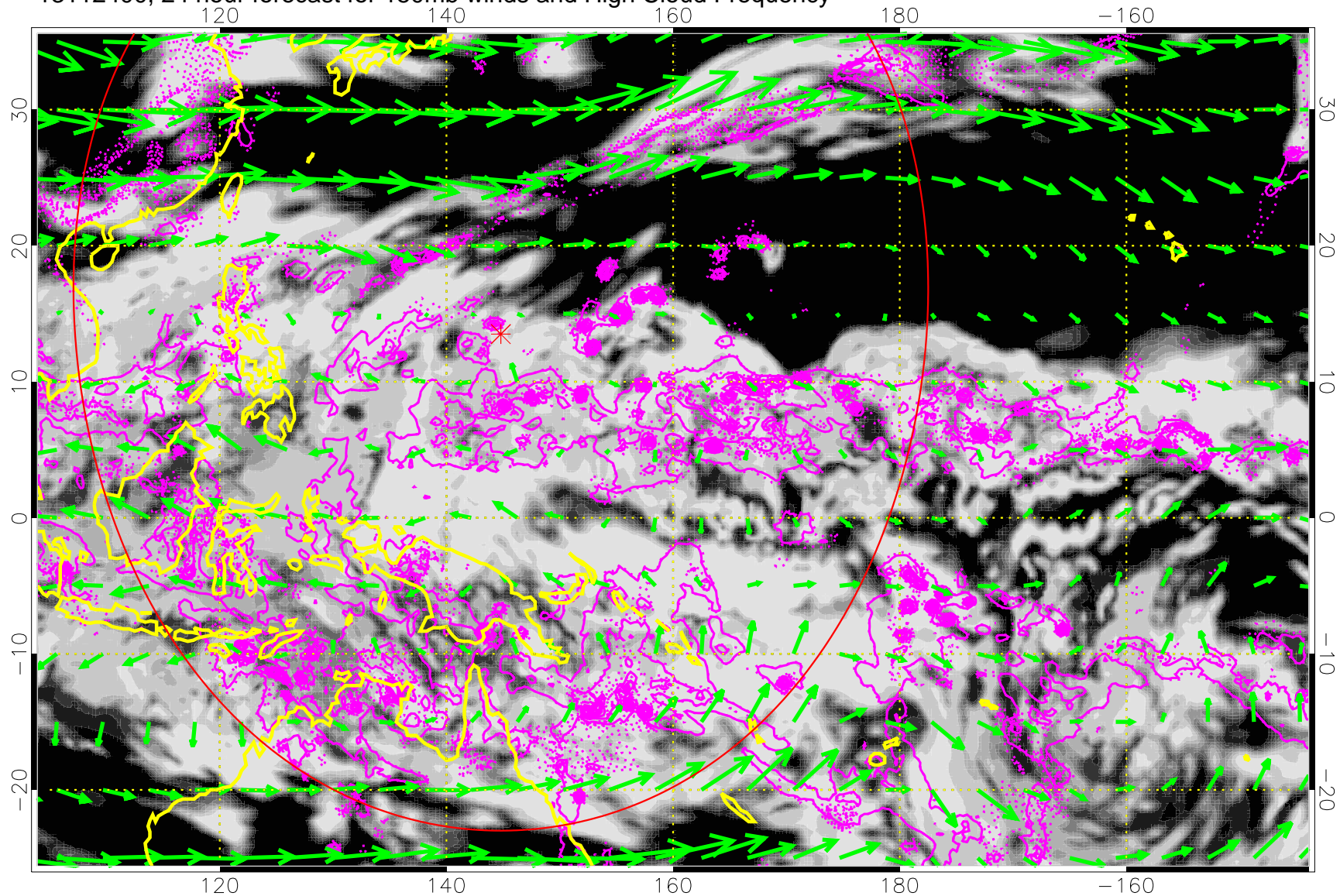
13112318, 18 hour forecast for 150mb winds and High Cloud Frequency



Precip (tot dot, conv sol) 6 mm/day contours, min 4

→ 50 m/s

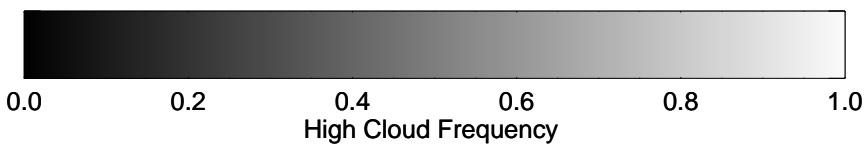
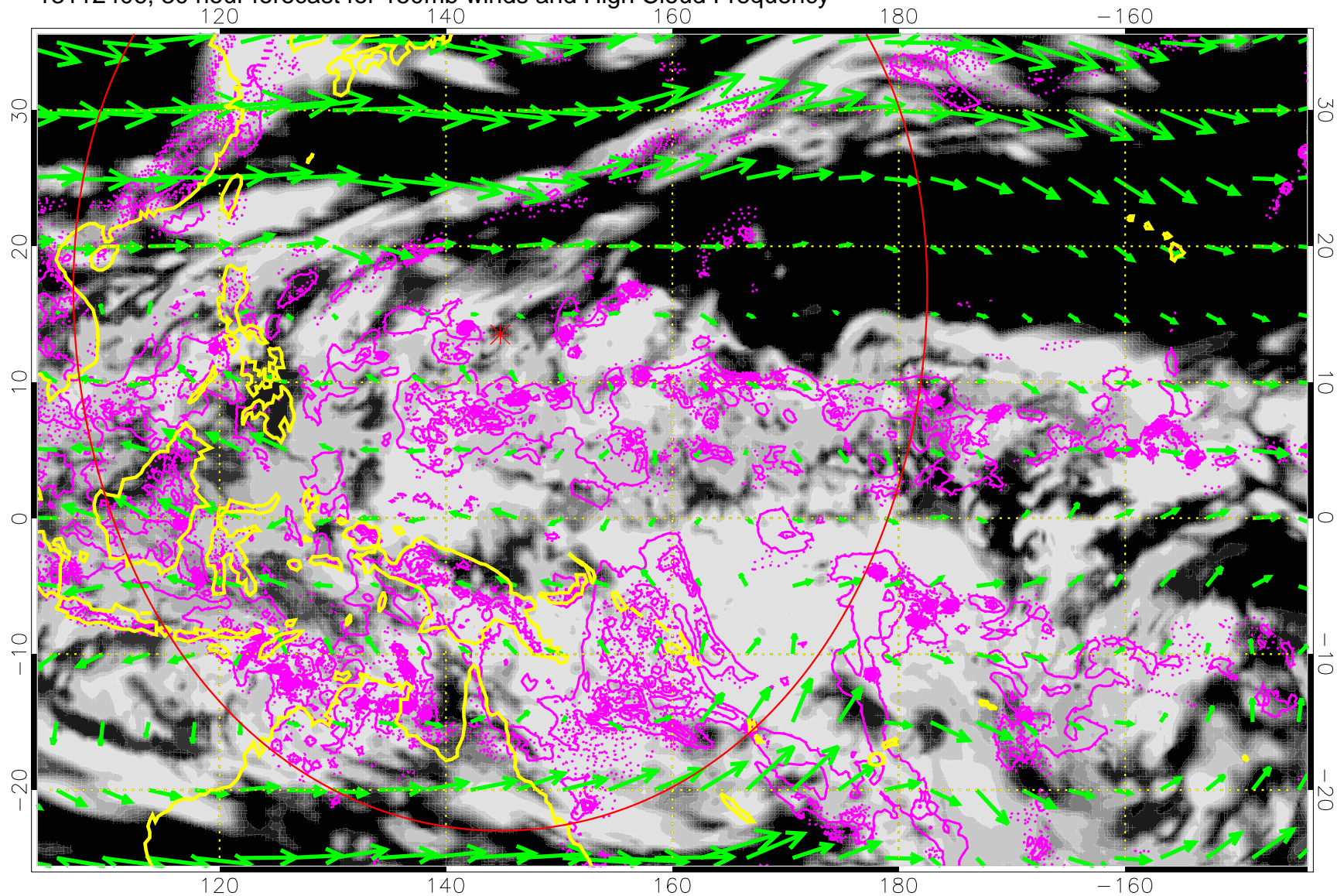
13112400, 24 hour forecast for 150mb winds and High Cloud Frequency



Precip (tot dot, conv sol) 6 mm/day contours, min 4

→ 50 m/s

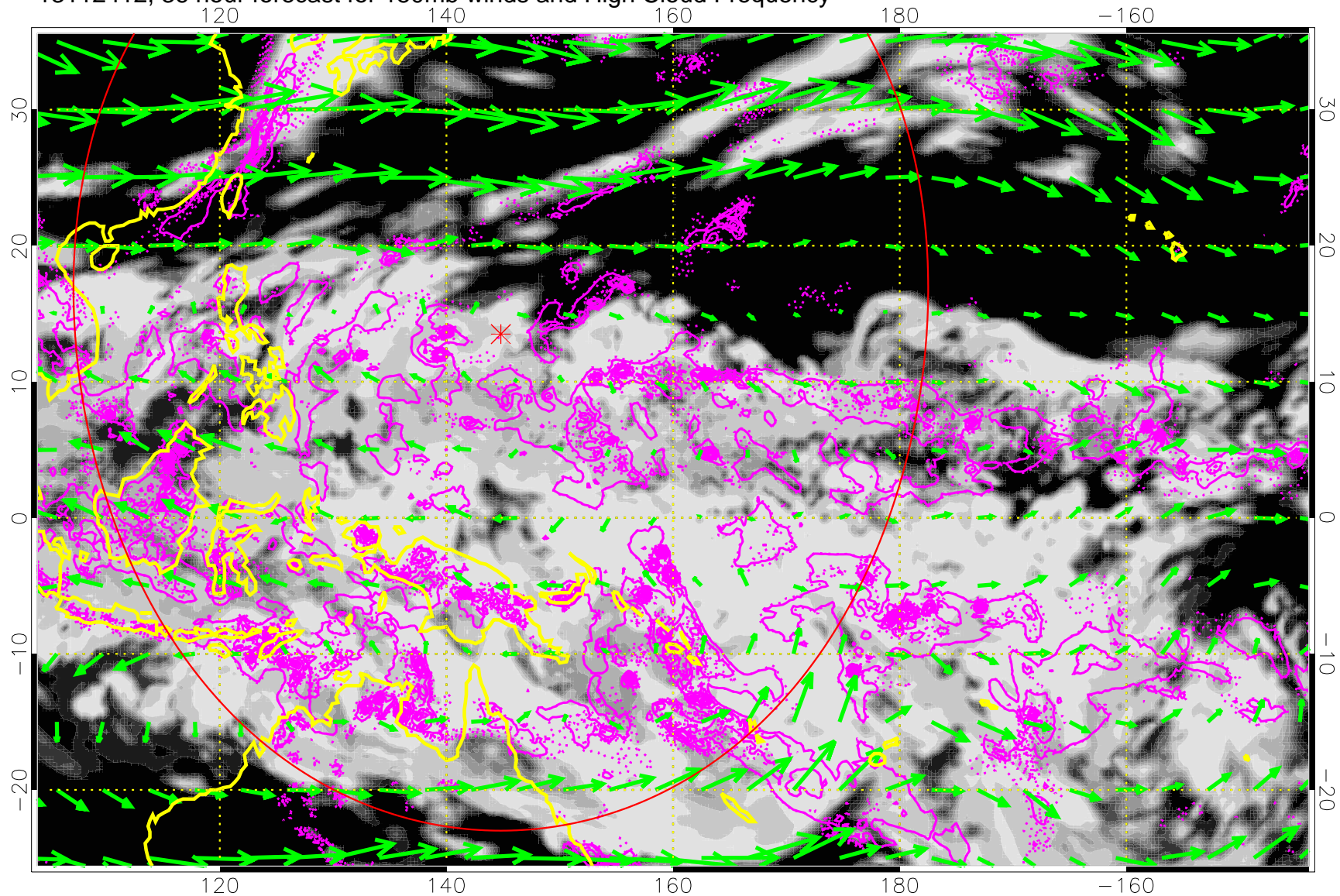
13112406, 30 hour forecast for 150mb winds and High Cloud Frequency



Precip (tot dot, conv sol) 6 mm/day contours, min 4

→ 50 m/s

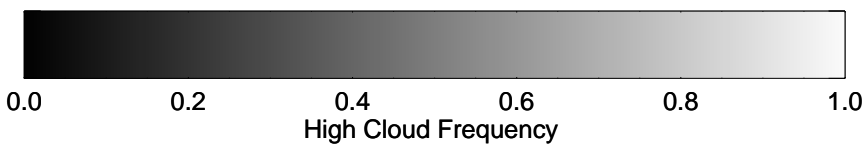
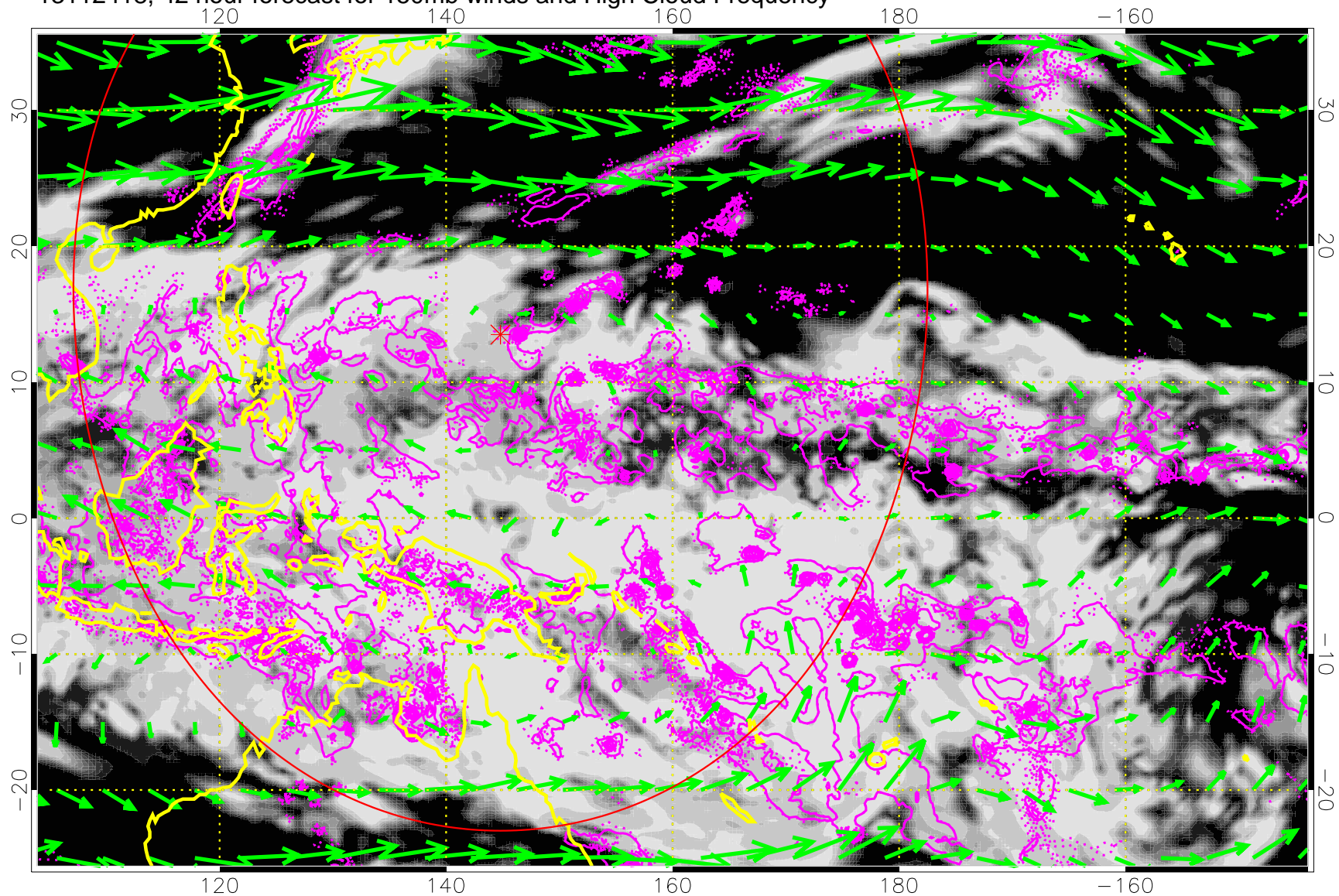
13112412, 36 hour forecast for 150mb winds and High Cloud Frequency



Precip (tot dot, conv sol) 6 mm/day contours, min 4

→ 50 m/s

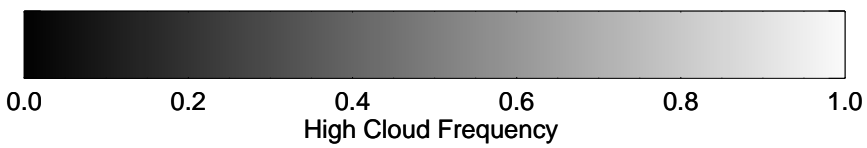
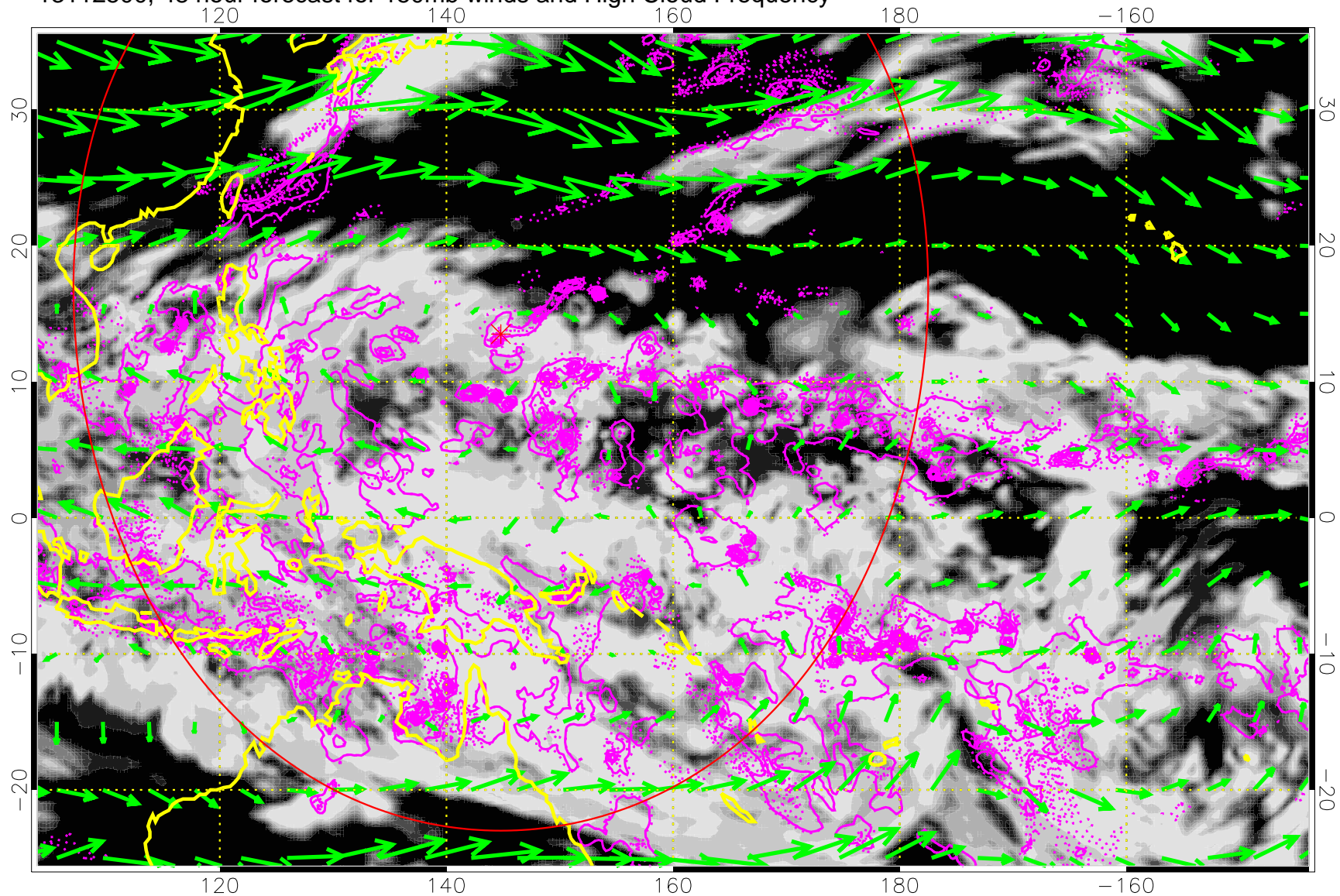
13112418, 42 hour forecast for 150mb winds and High Cloud Frequency



Precip (tot dot, conv sol) 6 mm/day contours, min 4

→ 50 m/s

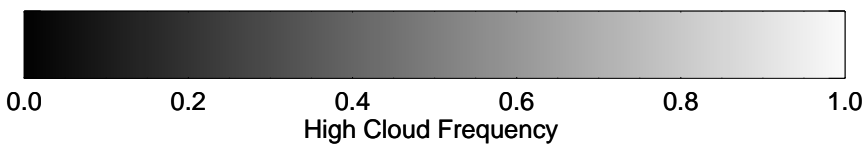
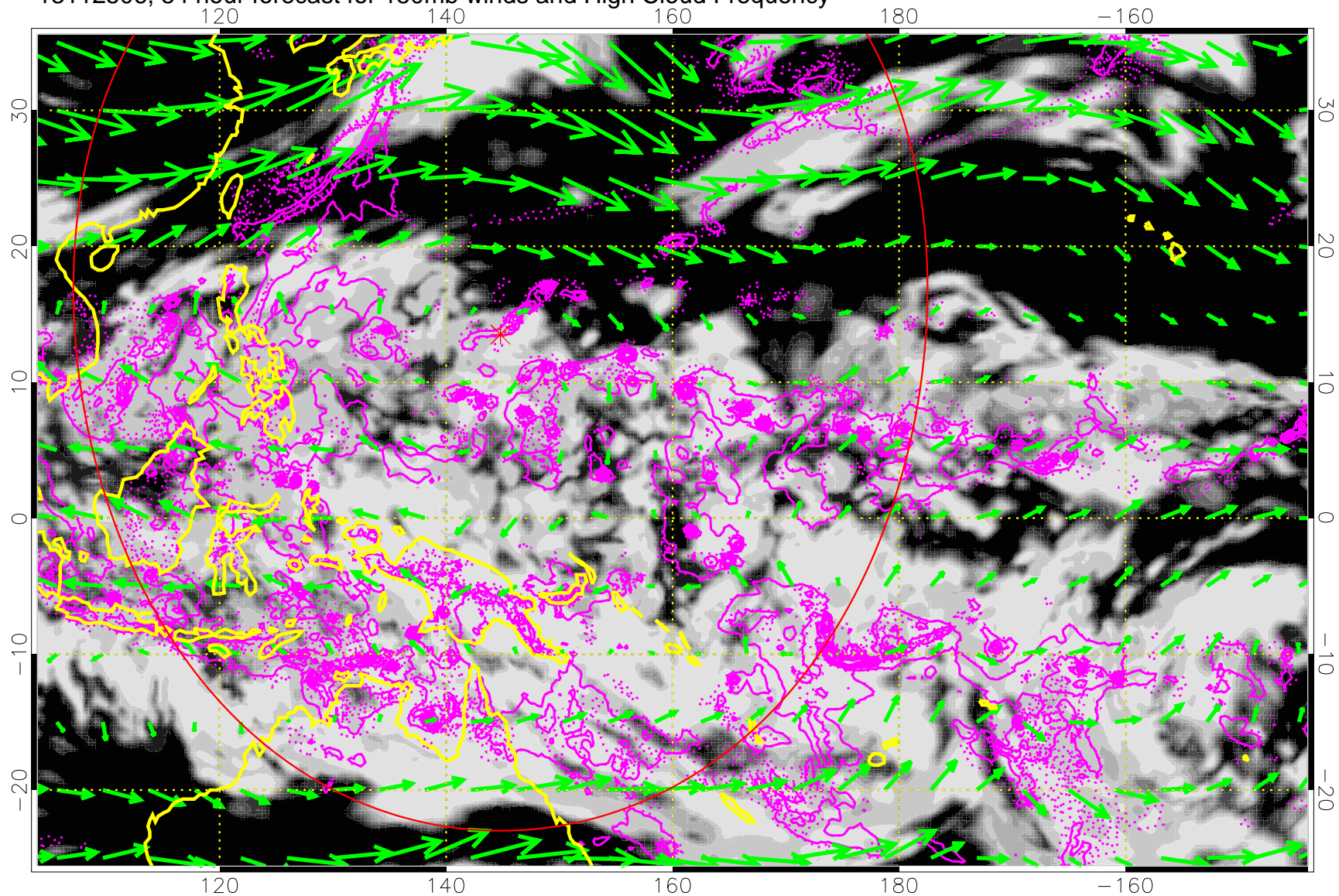
13112500, 48 hour forecast for 150mb winds and High Cloud Frequency



Precip (tot dot, conv sol) 6 mm/day contours, min 4

→ 50 m/s

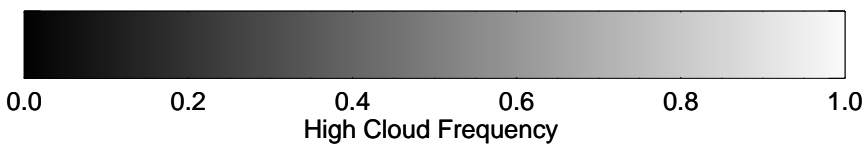
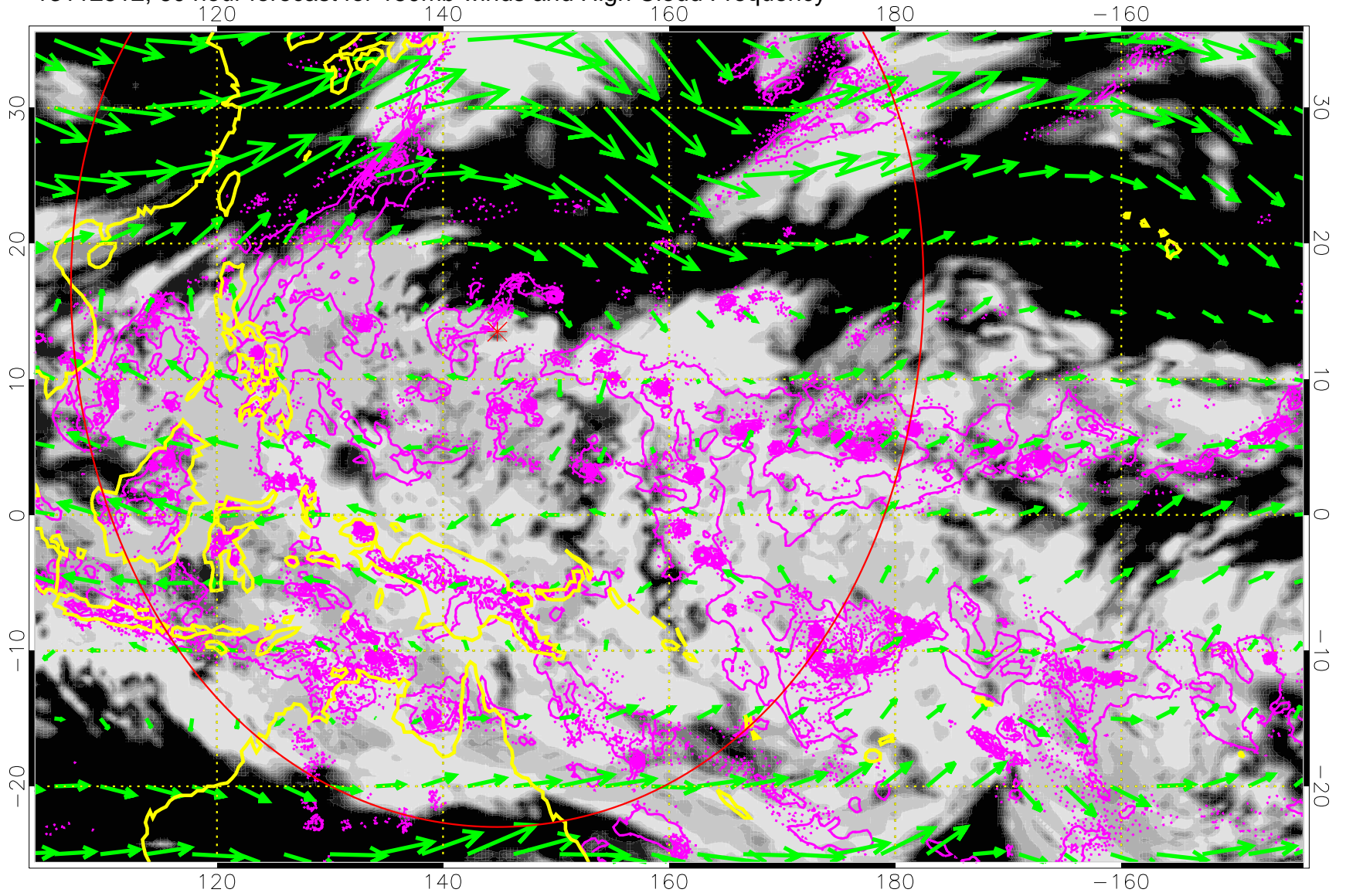
13112506, 54 hour forecast for 150mb winds and High Cloud Frequency



Precip (tot dot, conv sol) 6 mm/day contours, min 4

→ 50 m/s

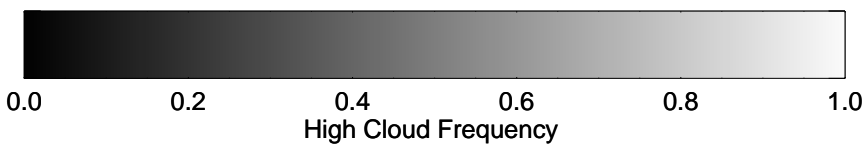
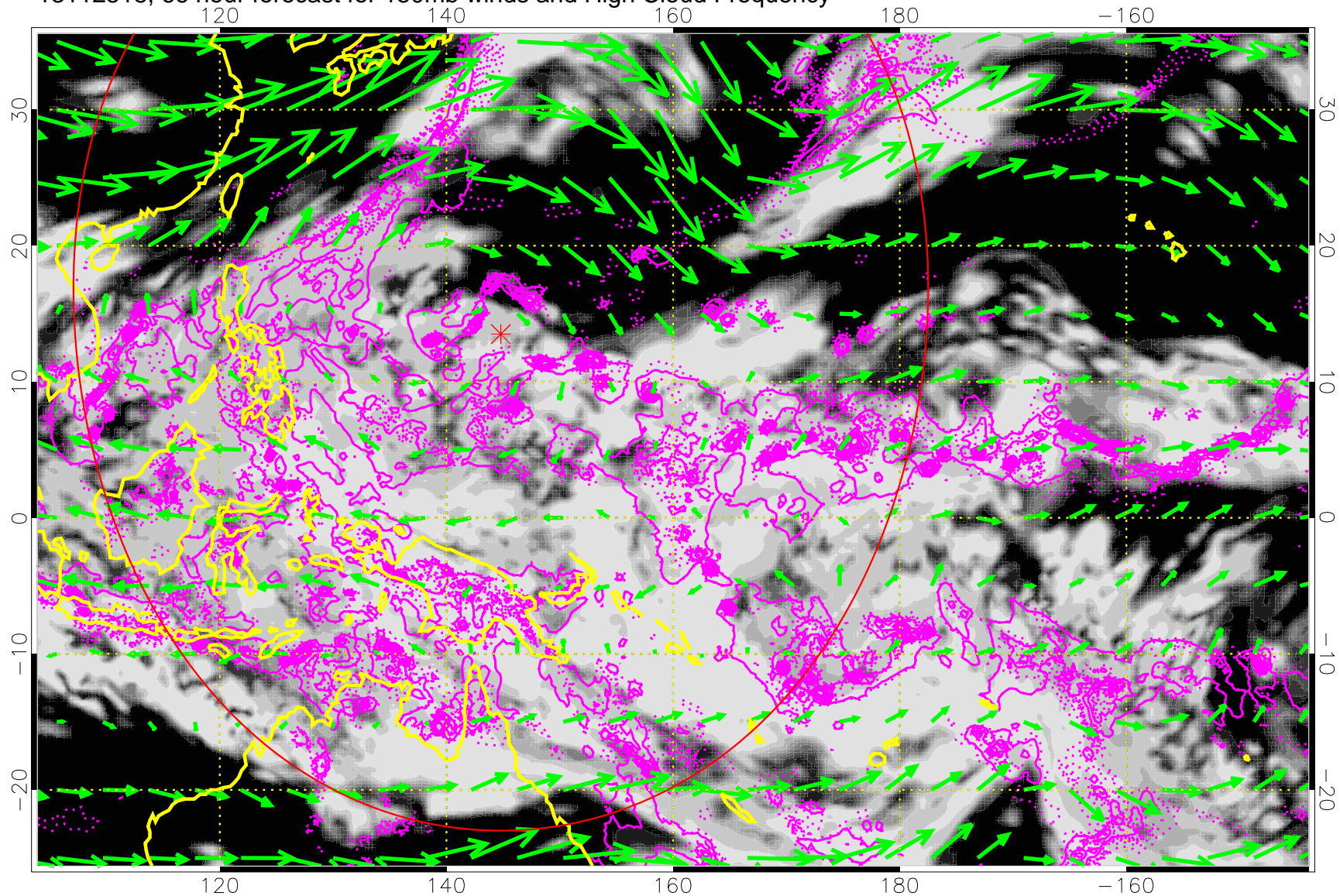
13112512, 60 hour forecast for 150mb winds and High Cloud Frequency



Precip (tot dot, conv sol) 6 mm/day contours, min 4

→ 50 m/s

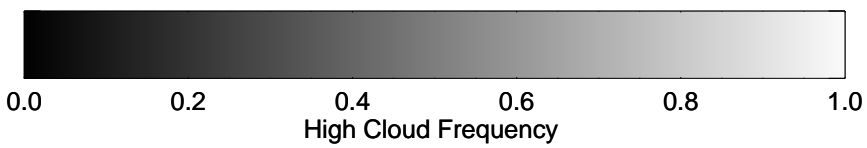
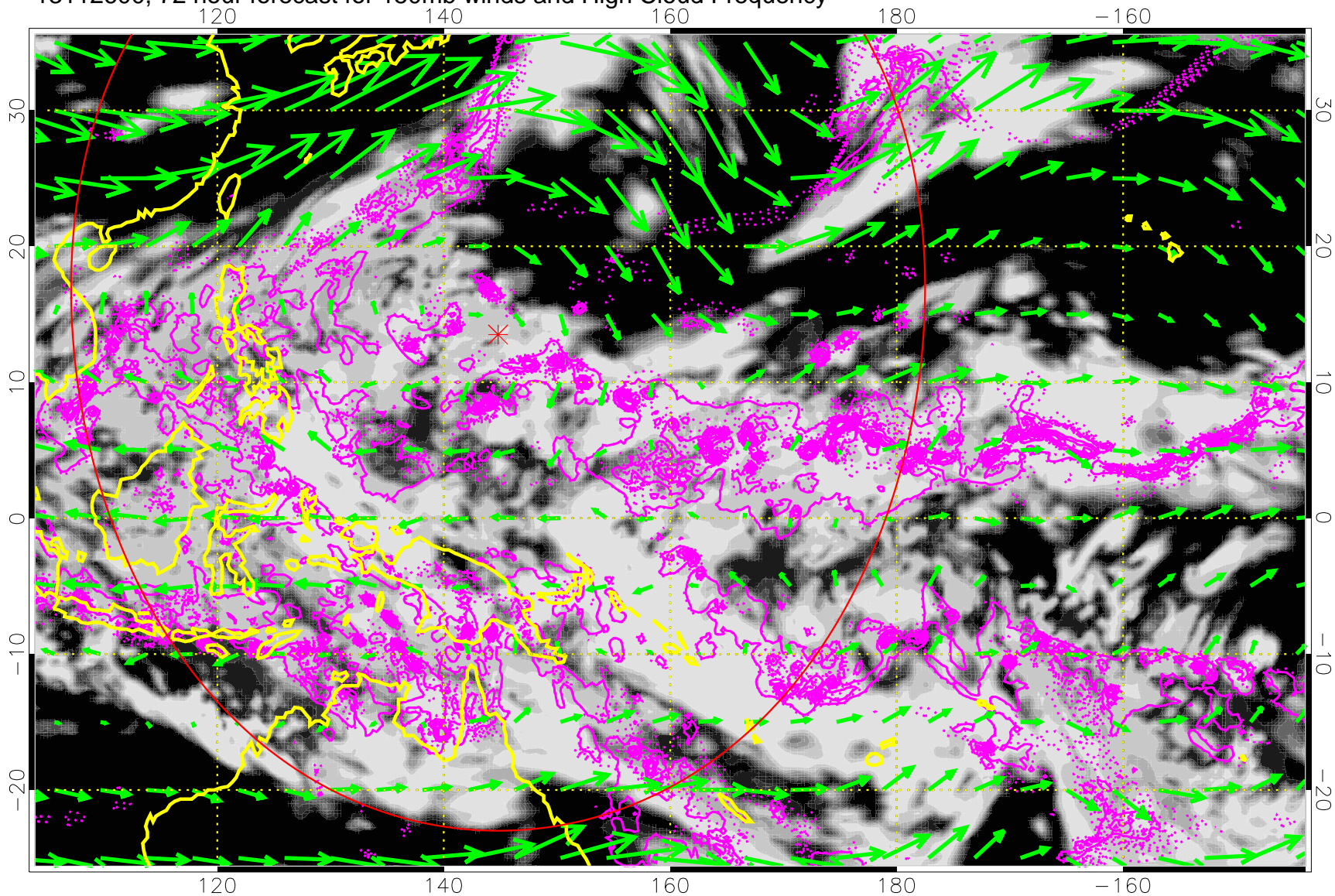
13112518, 66 hour forecast for 150mb winds and High Cloud Frequency



Precip (tot dot, conv sol) 6 mm/day contours, min 4

→ 50 m/s

13112600, 72 hour forecast for 150mb winds and High Cloud Frequency

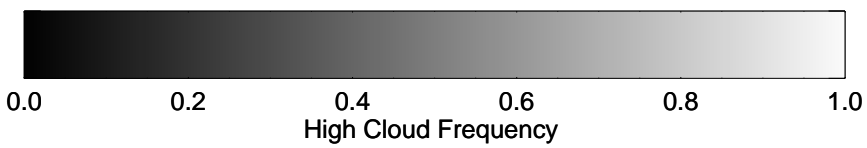
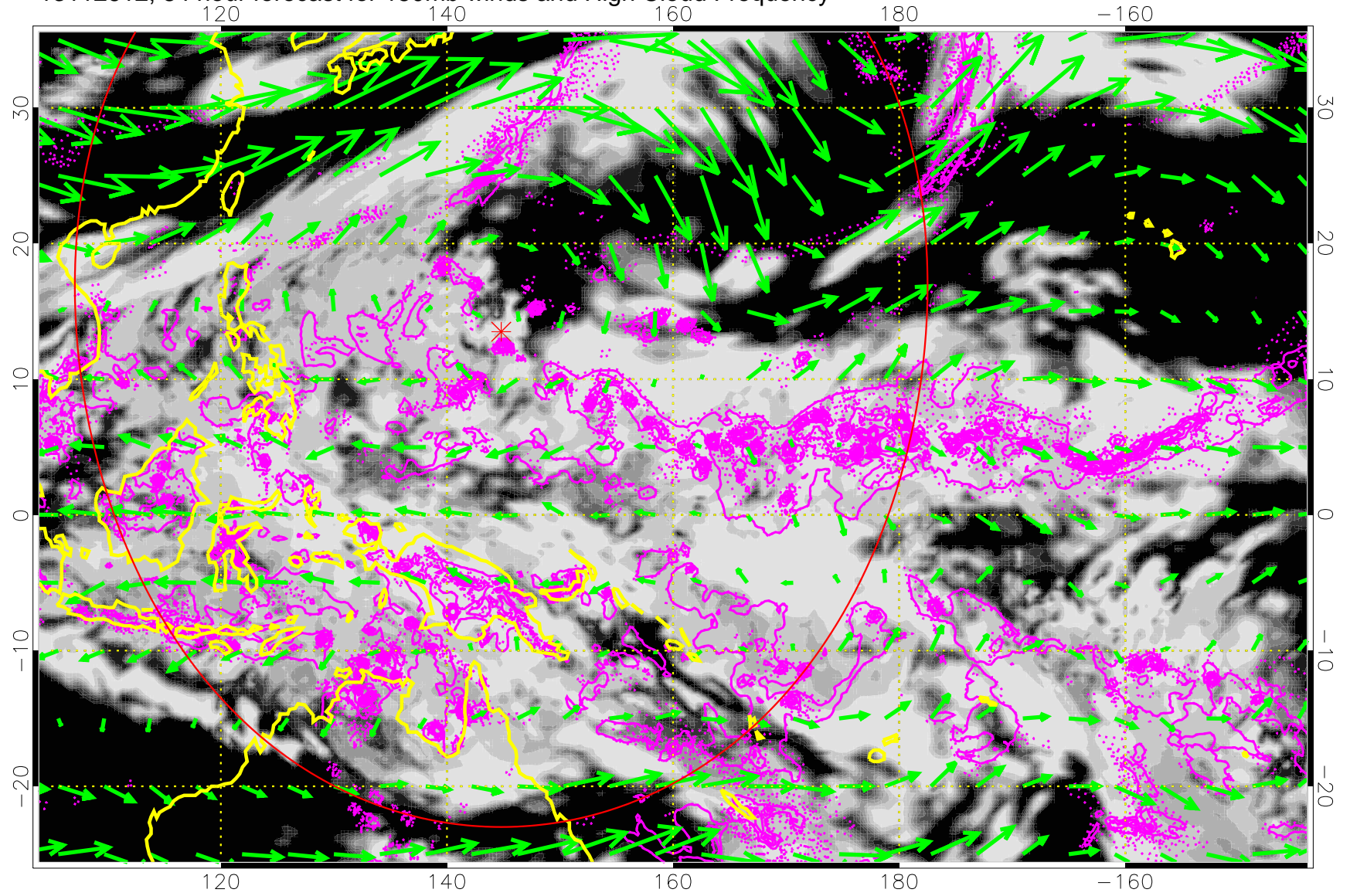


Precip (tot dot, conv sol) 6 mm/day contours, min 4

→ 50 m/s



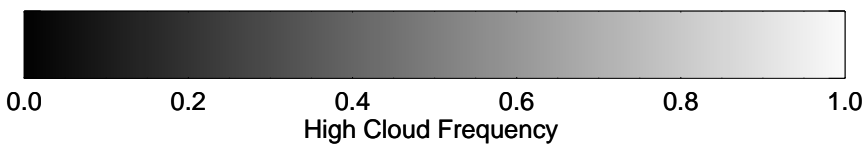
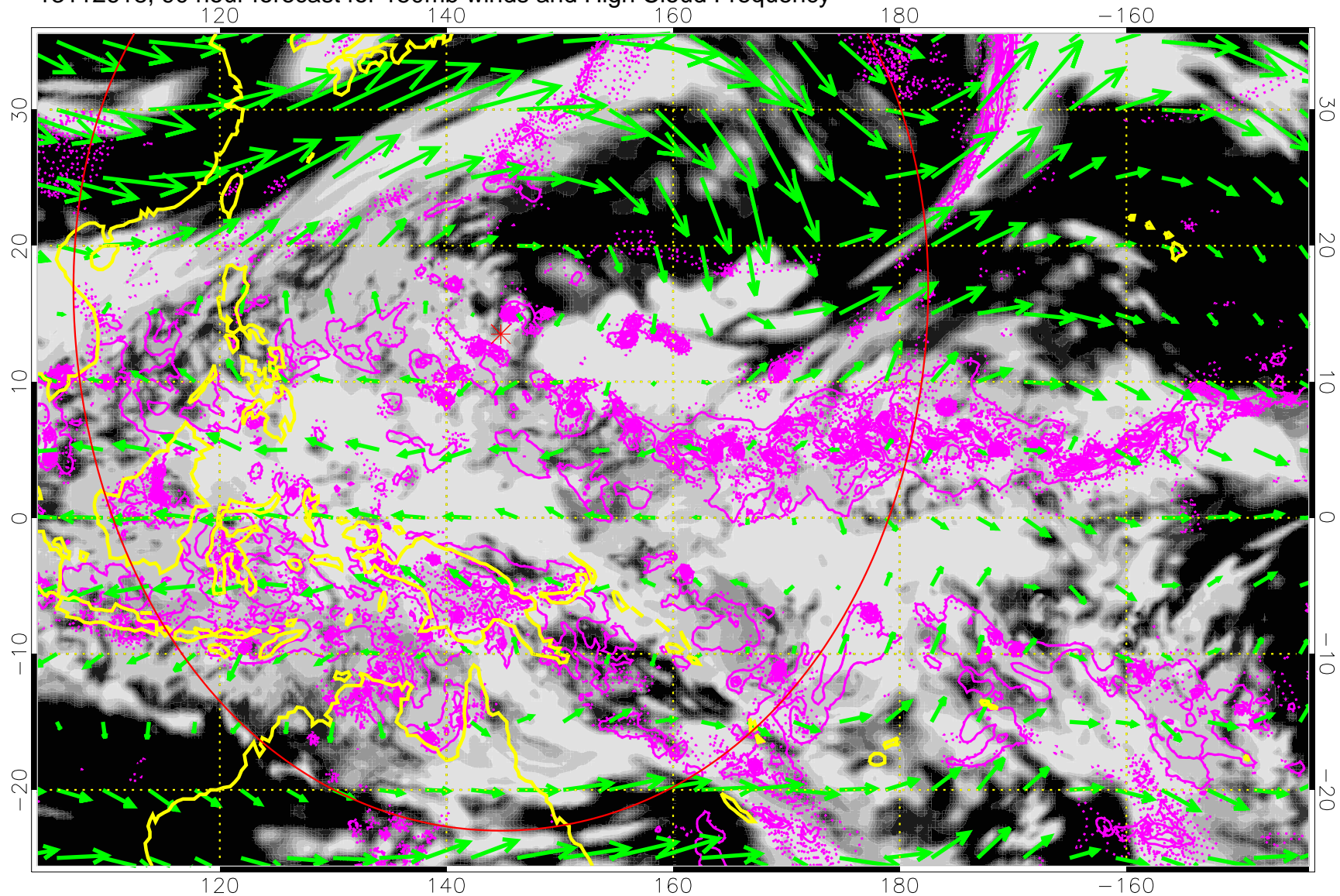
13112612, 84 hour forecast for 150mb winds and High Cloud Frequency



Precip (tot dot, conv sol) 6 mm/day contours, min 4

→ 50 m/s

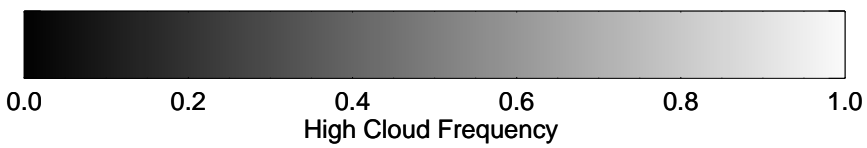
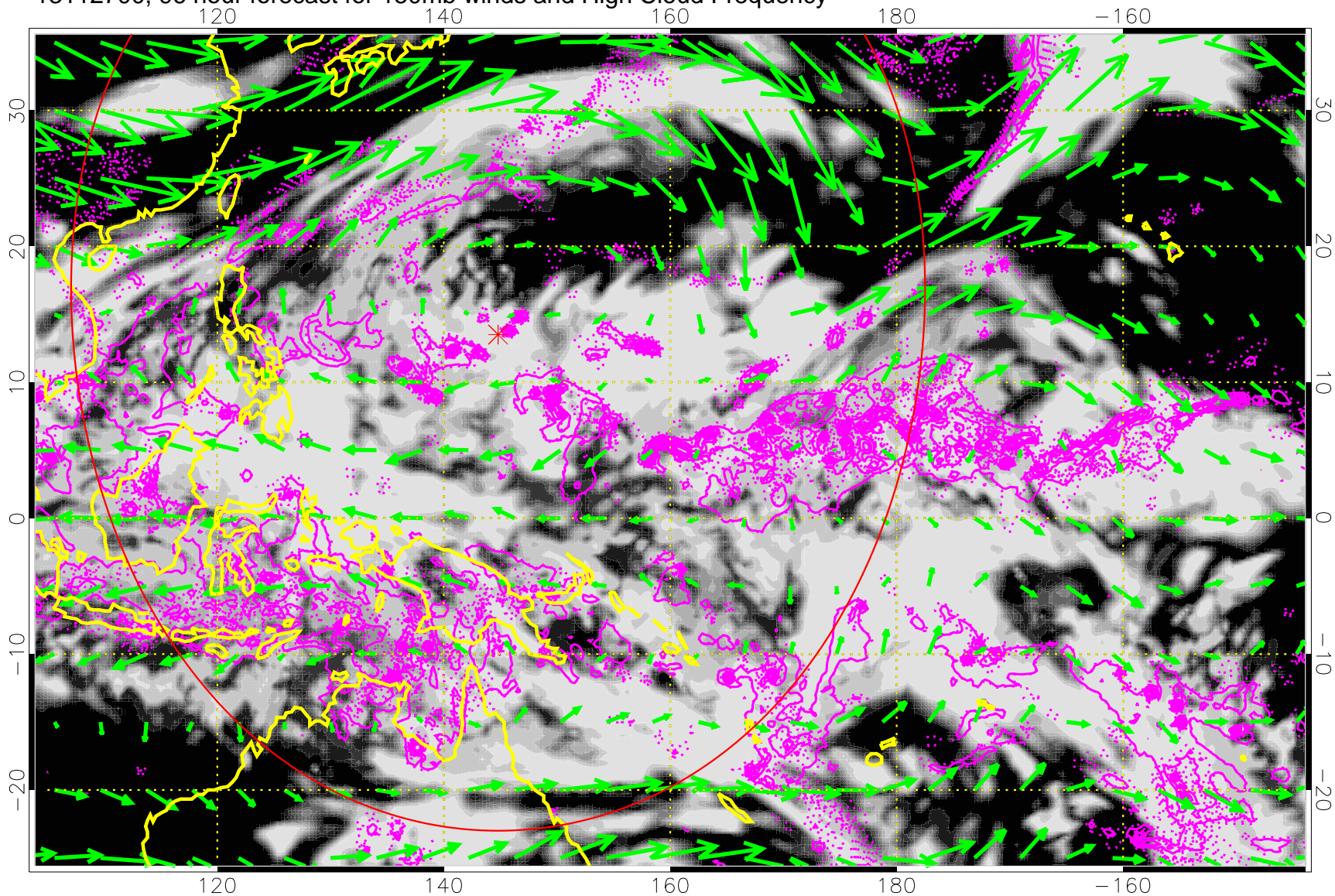
13112618, 90 hour forecast for 150mb winds and High Cloud Frequency



Precip (tot dot, conv sol) 6 mm/day contours, min 4

→ 50 m/s

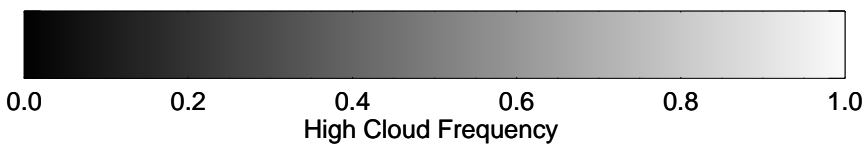
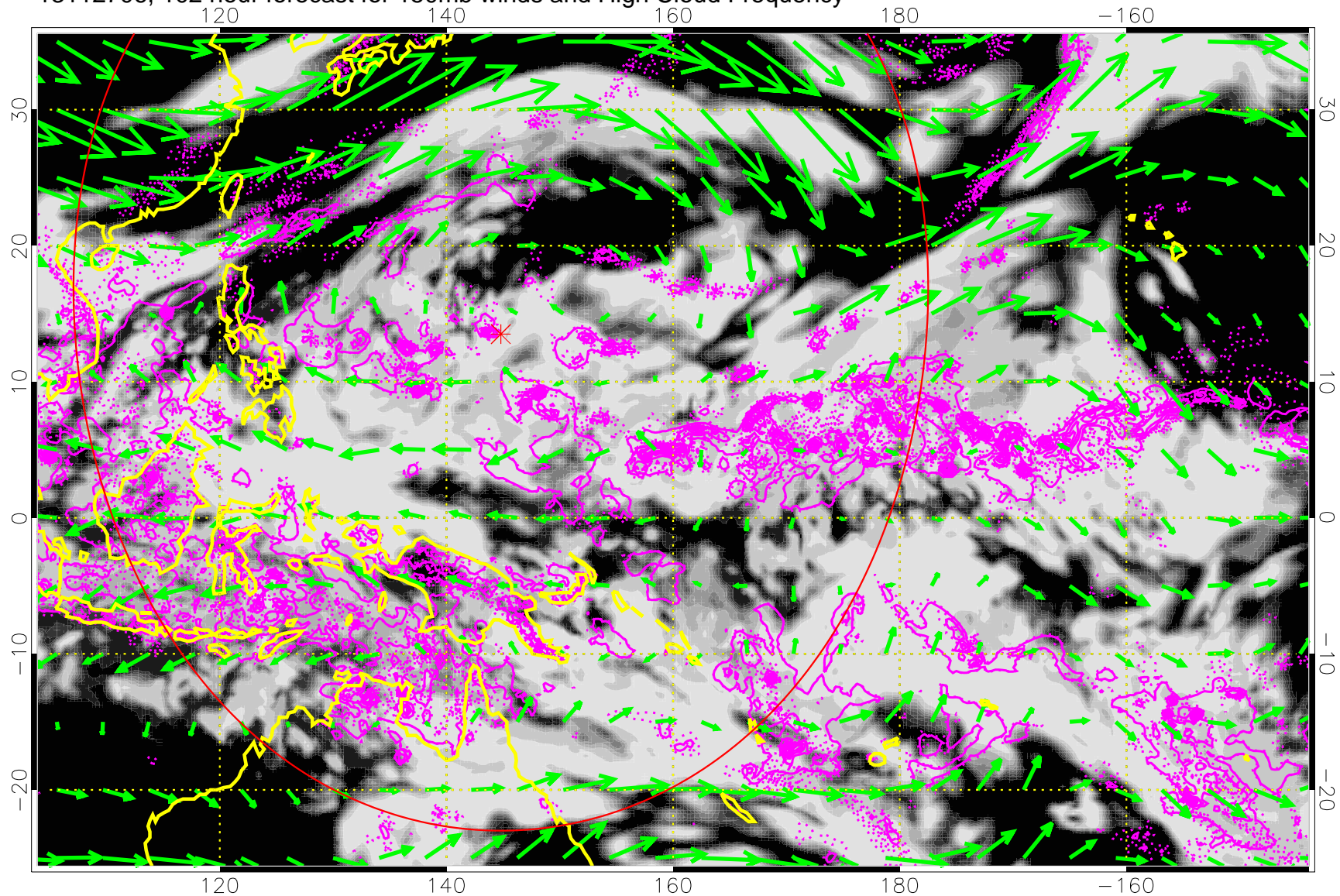
13112700, 96 hour forecast for 150mb winds and High Cloud Frequency



Precip (tot dot, conv sol) 6 mm/day contours, min 4

→ 50 m/s

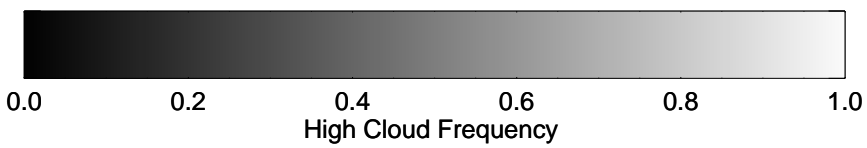
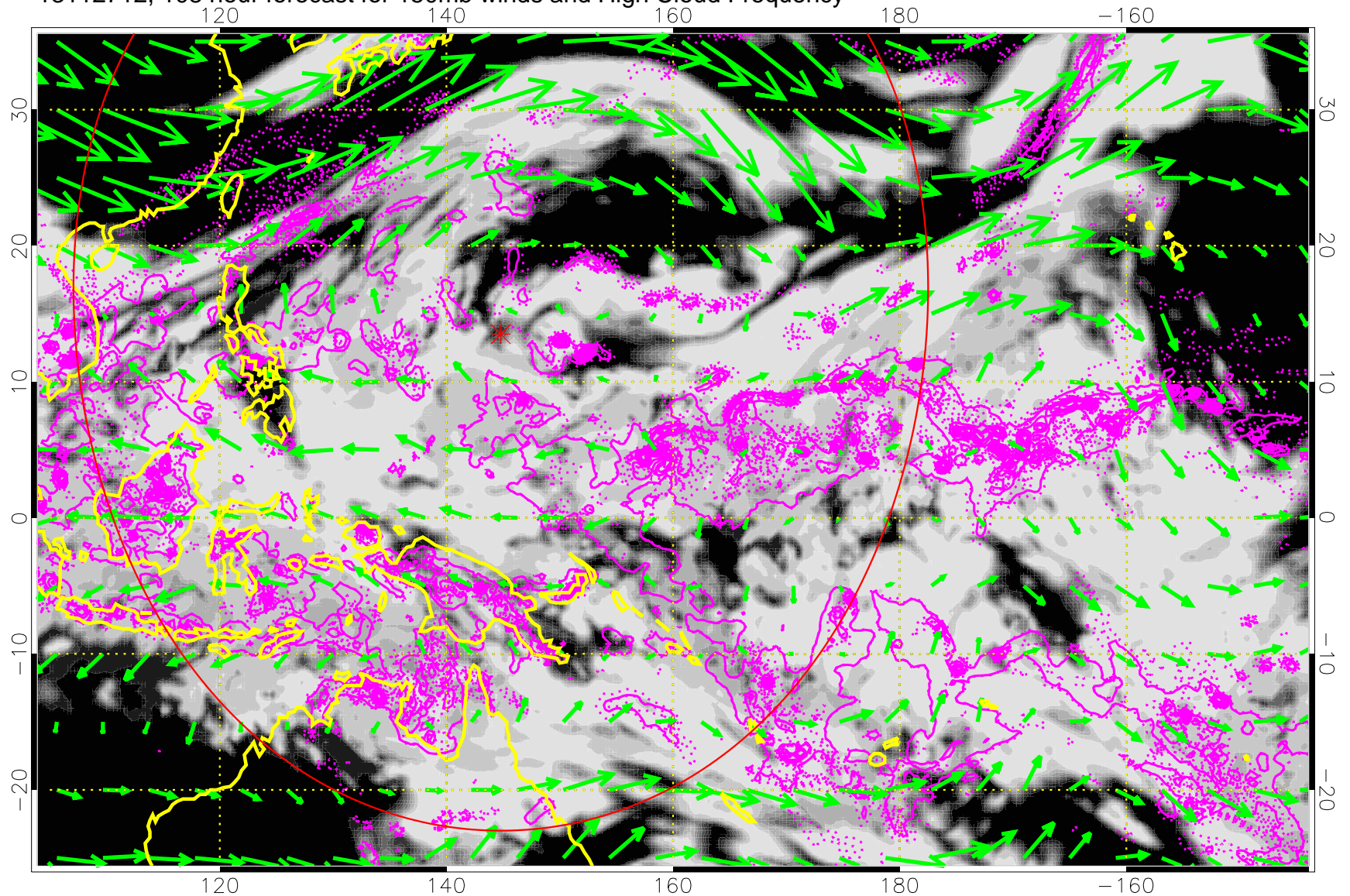
13112706, 102 hour forecast for 150mb winds and High Cloud Frequency



Precip (tot dot, conv sol) 6 mm/day contours, min 4

→ 50 m/s

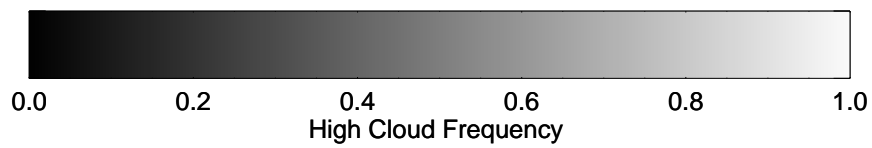
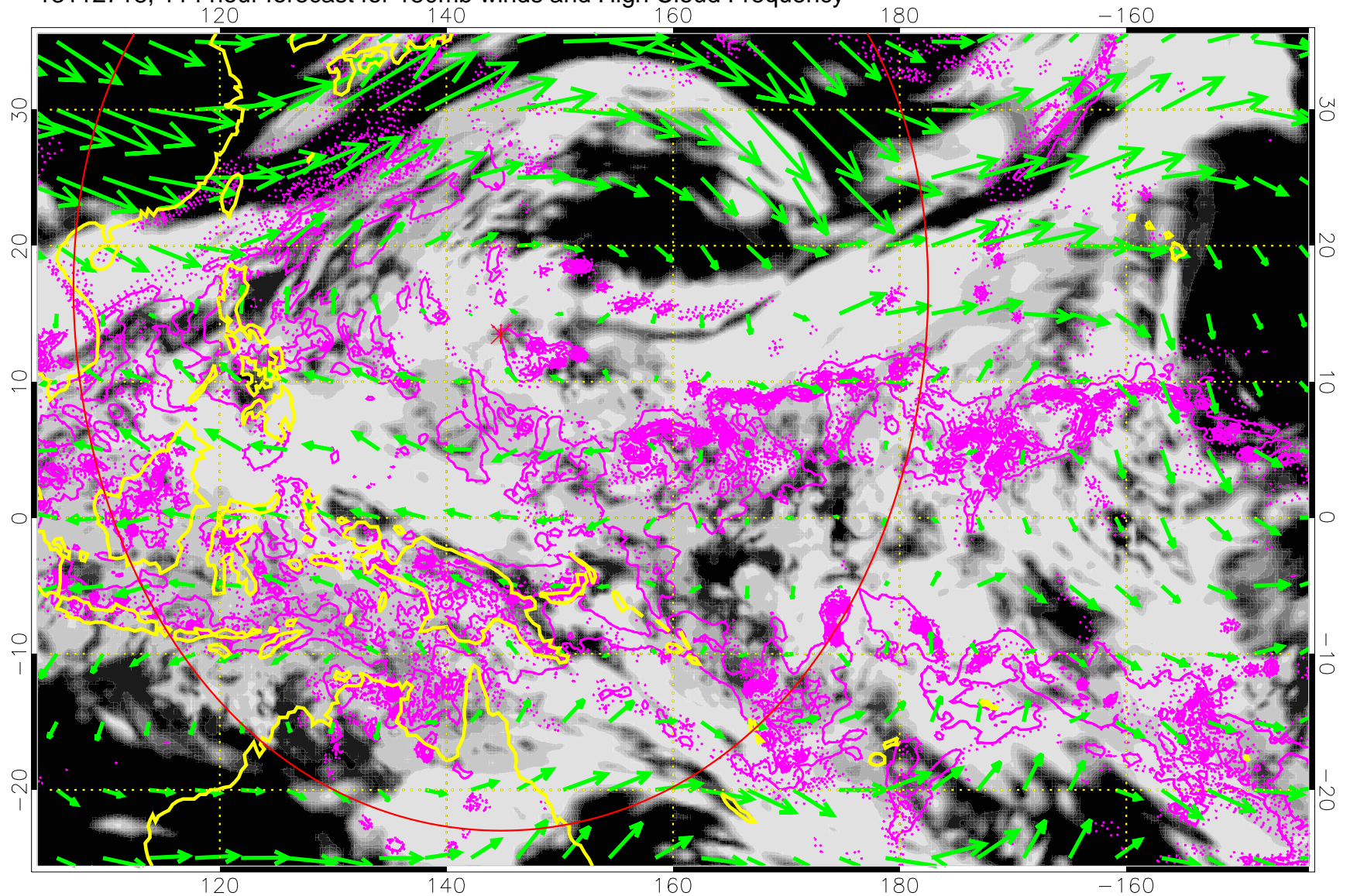
13112712, 108 hour forecast for 150mb winds and High Cloud Frequency



Precip (tot dot, conv sol) 6 mm/day contours, min 4

→ 50 m/s

13112718, 114 hour forecast for 150mb winds and High Cloud Frequency



Precip (tot dot, conv sol) 6 mm/day contours, min 4

→ 50 m/s