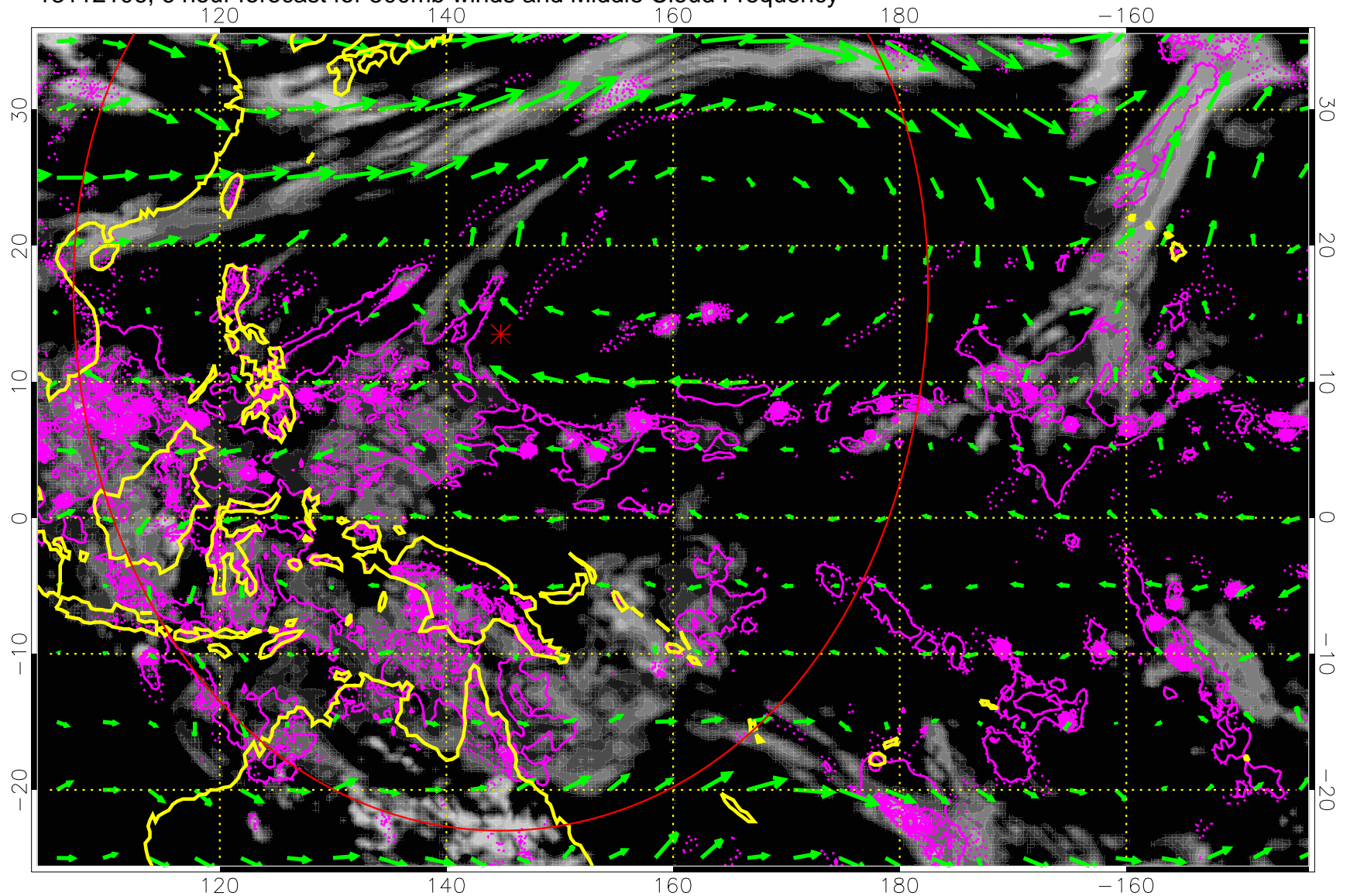


13112106, 6 hour forecast for 500mb winds and Middle Cloud Frequency

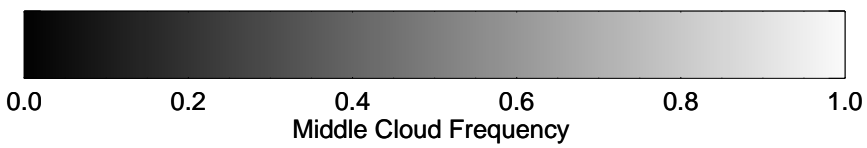
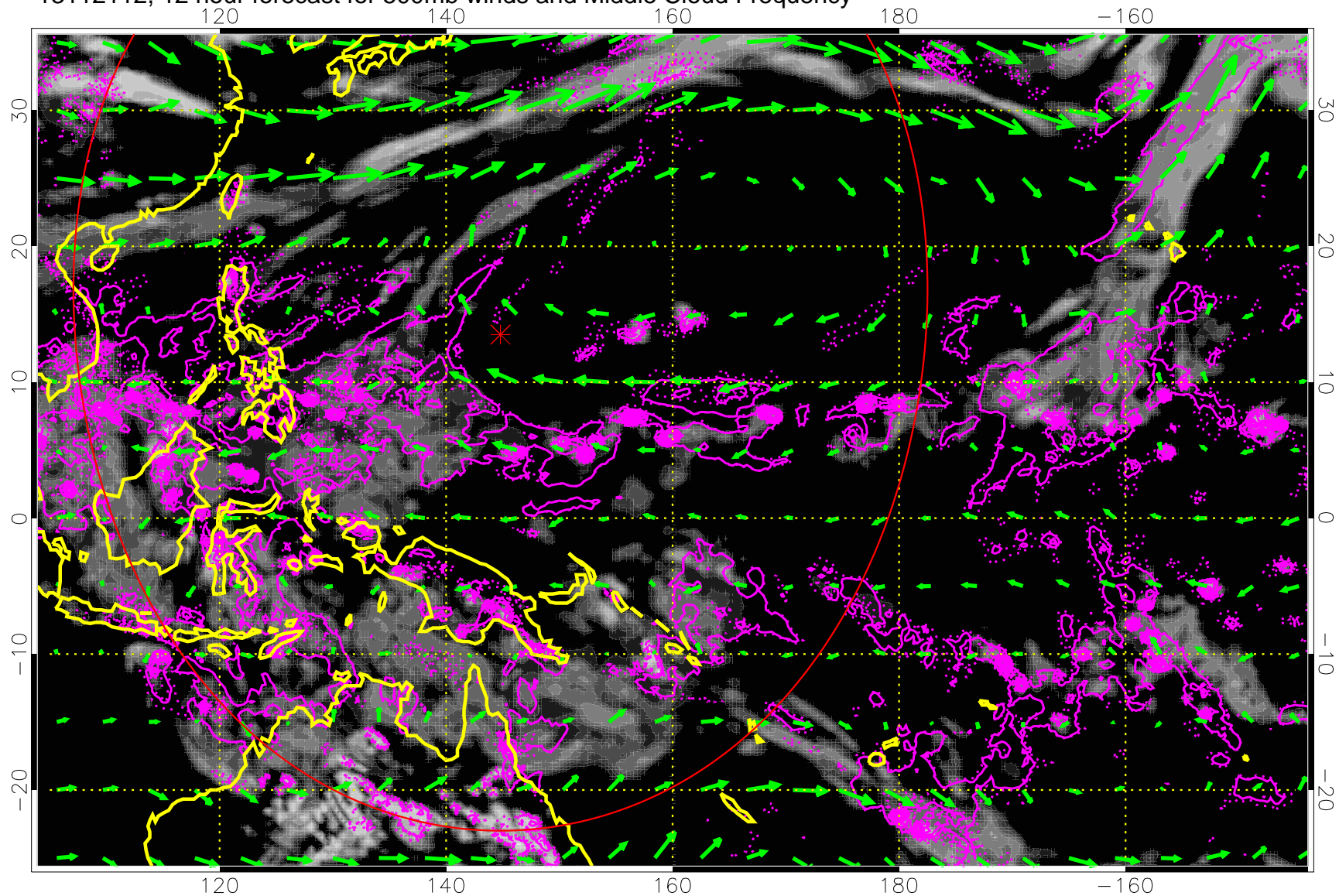


0.0 0.2 0.4 0.6 0.8 1.0  
Middle Cloud Frequency

Precip (tot dot, conv sol) 6 mm/day contours, min 4

→ 50 m/s

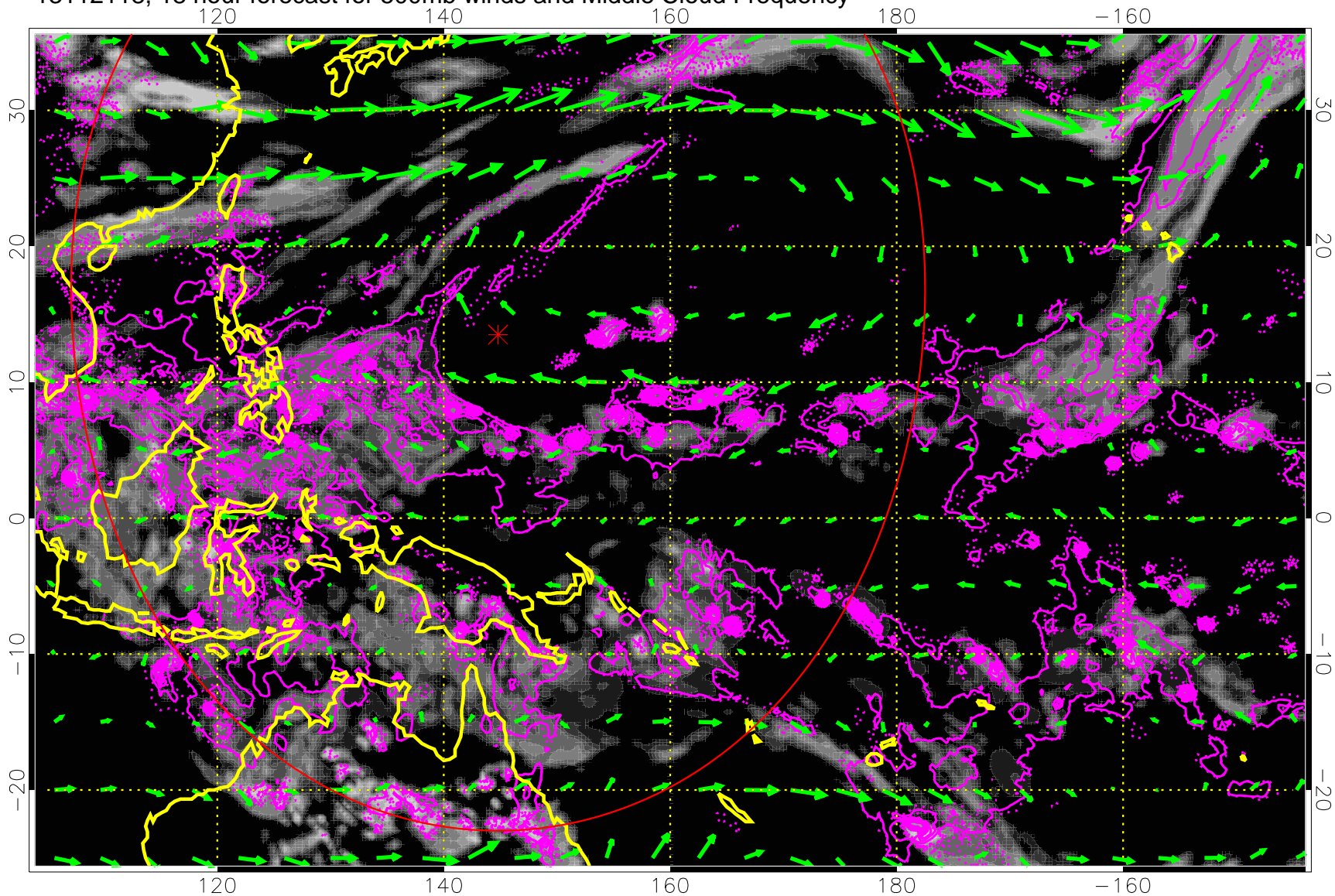
13112112, 12 hour forecast for 500mb winds and Middle Cloud Frequency



Precip (tot dot, conv sol) 6 mm/day contours, min 4

→ 50 m/s

13112118, 18 hour forecast for 500mb winds and Middle Cloud Frequency

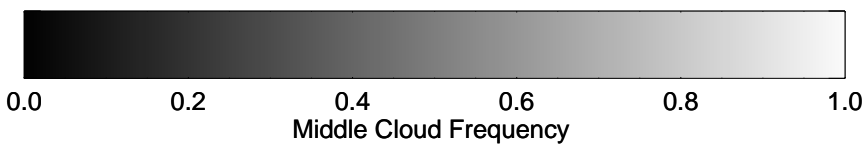
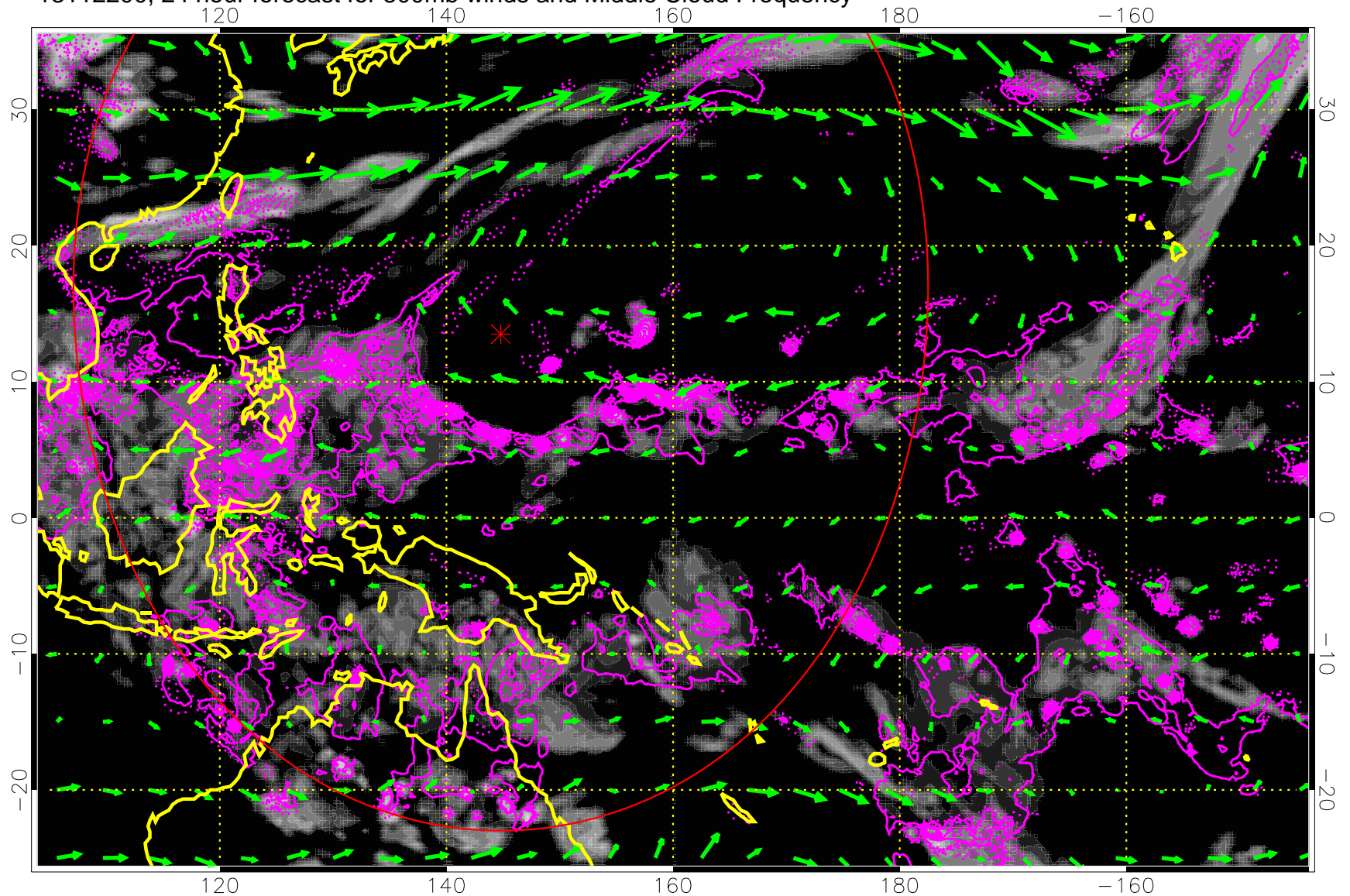


Middle Cloud Frequency

Precip (tot dot, conv sol) 6 mm/day contours, min 4

→ 50 m/s

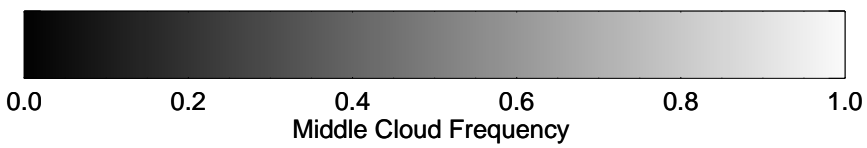
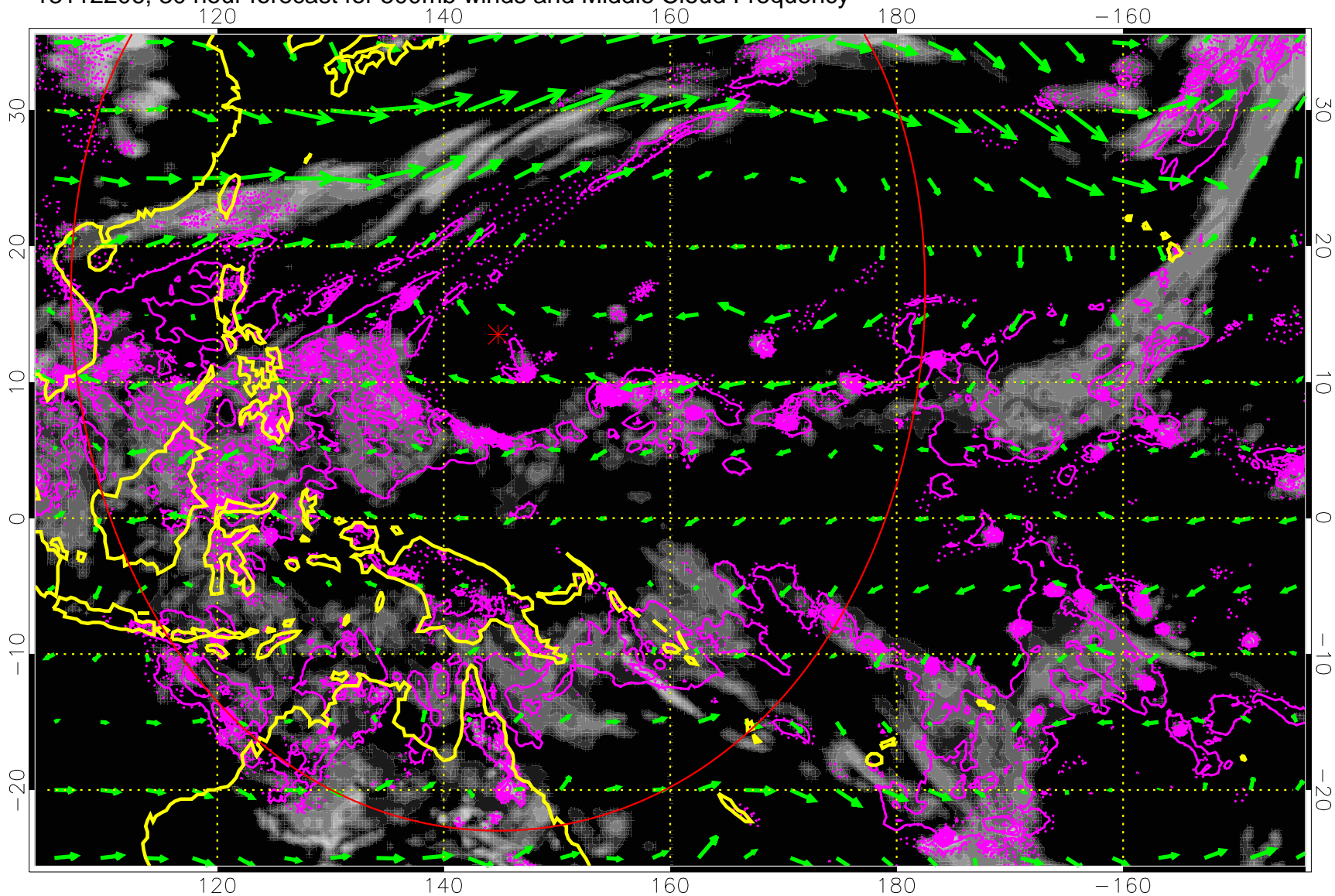
13112200, 24 hour forecast for 500mb winds and Middle Cloud Frequency



Precip (tot dot, conv sol) 6 mm/day contours, min 4

→ 50 m/s

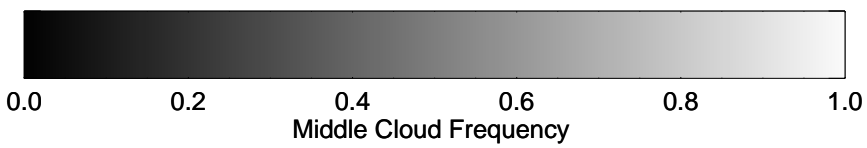
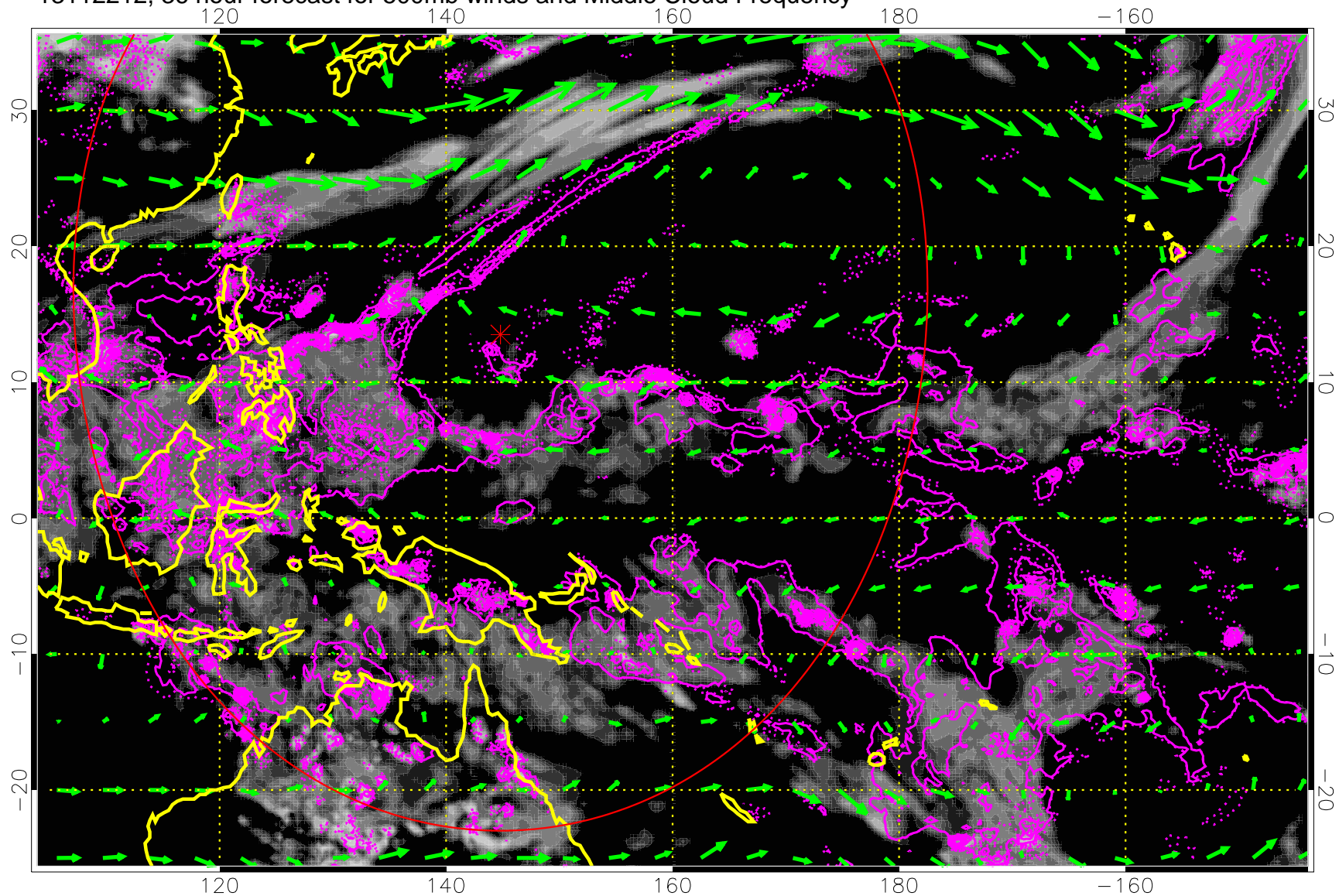
13112206, 30 hour forecast for 500mb winds and Middle Cloud Frequency



Precip (tot dot, conv sol) 6 mm/day contours, min 4

→ 50 m/s

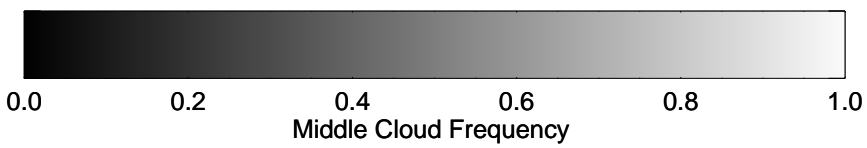
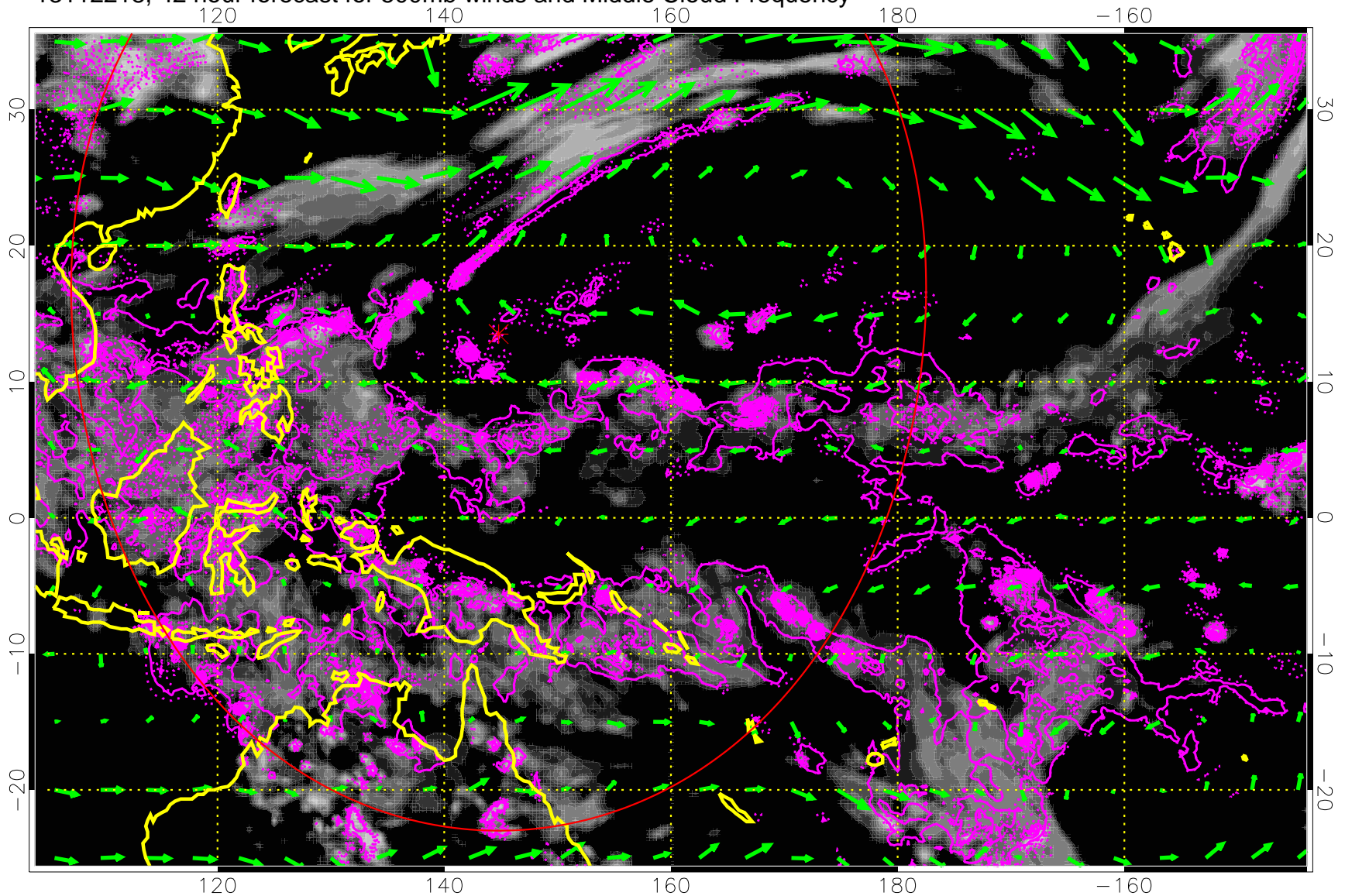
13112212, 36 hour forecast for 500mb winds and Middle Cloud Frequency



Precip (tot dot, conv sol) 6 mm/day contours, min 4

→ 50 m/s

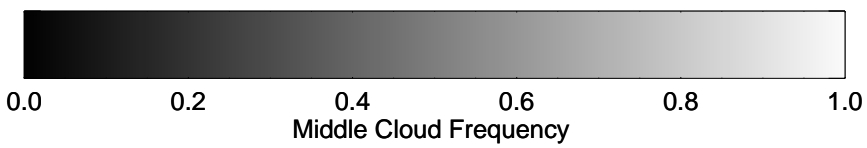
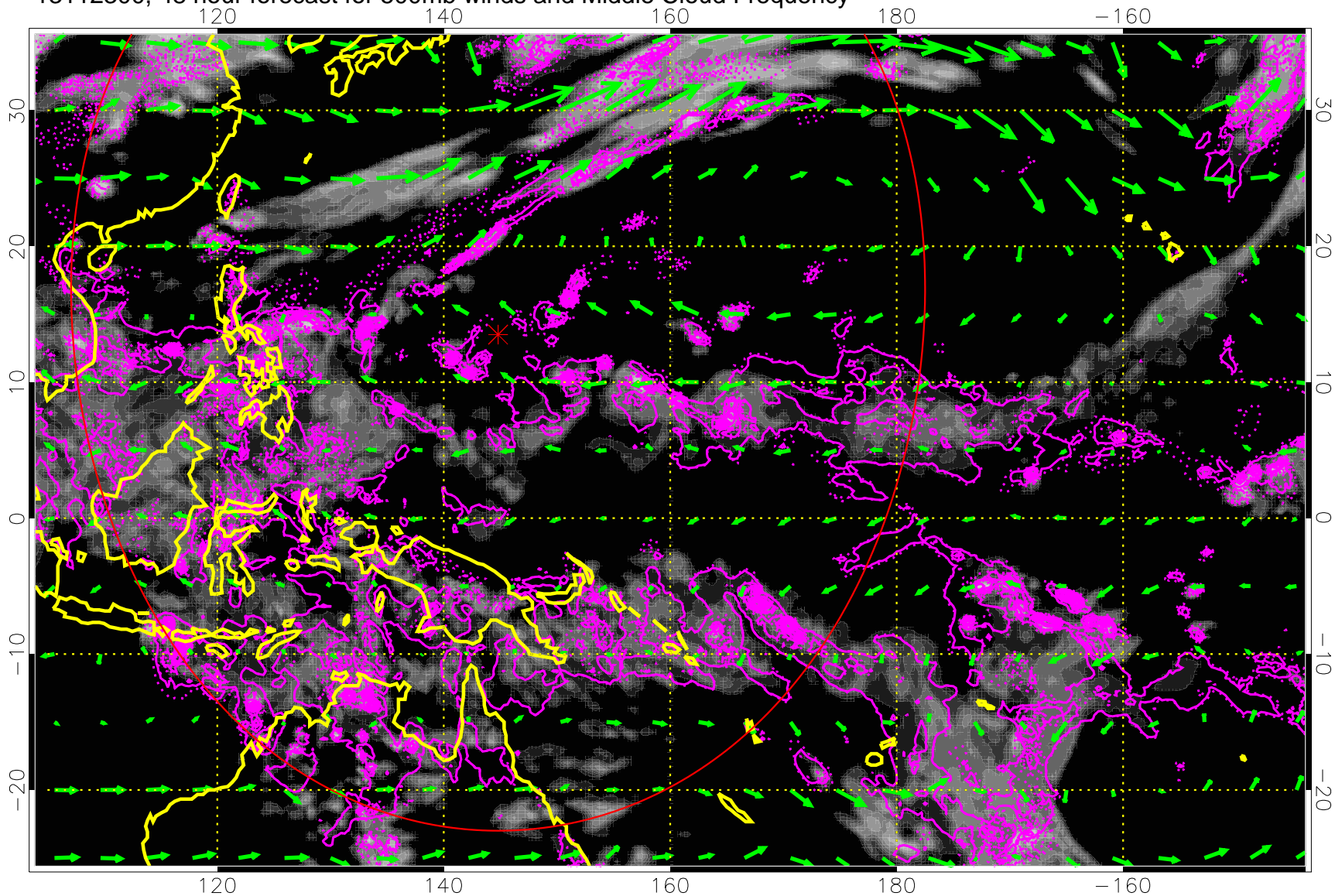
13112218, 42 hour forecast for 500mb winds and Middle Cloud Frequency



Precip (tot dot, conv sol) 6 mm/day contours, min 4

→ 50 m/s

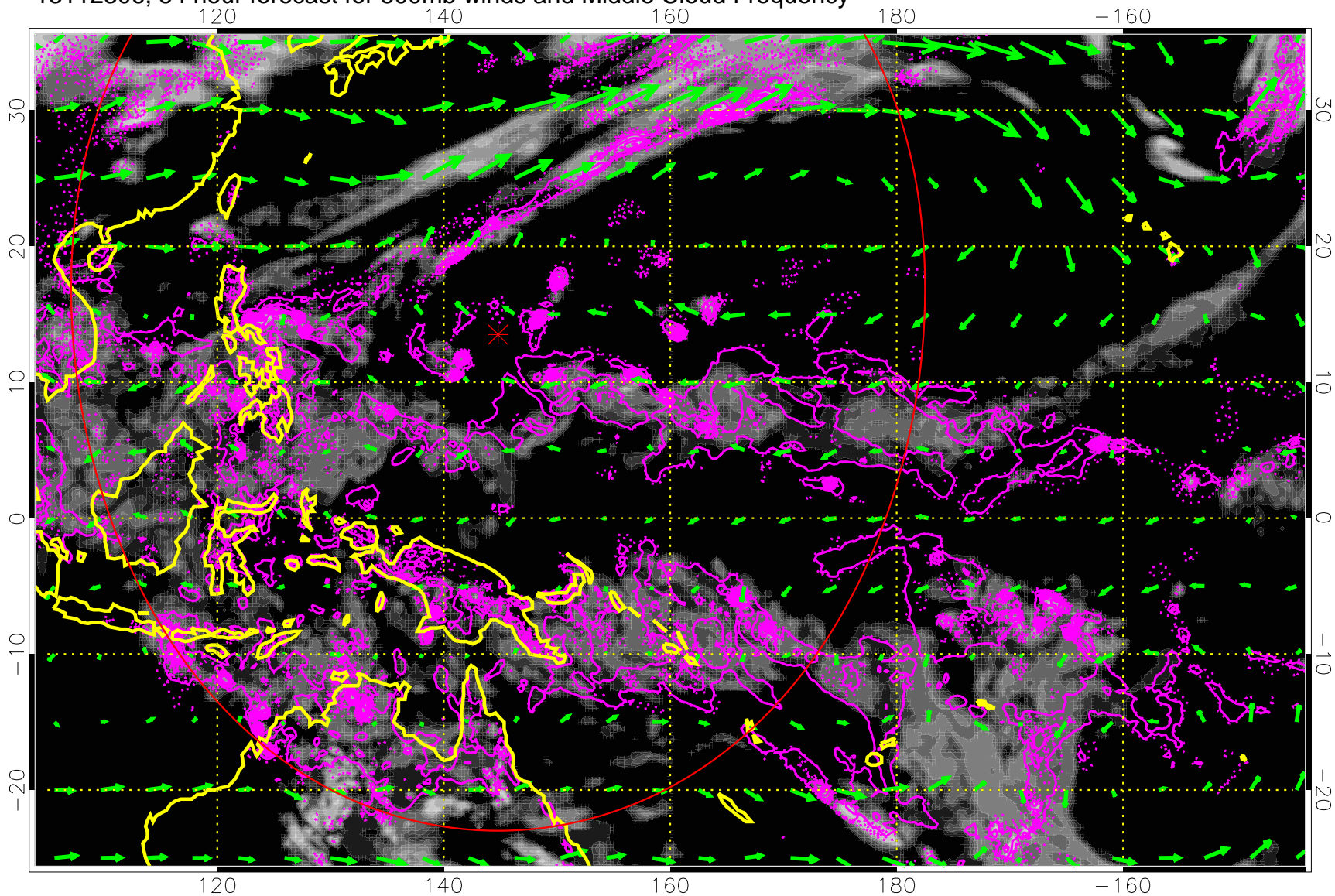
13112300, 48 hour forecast for 500mb winds and Middle Cloud Frequency



Precip (tot dot, conv sol) 6 mm/day contours, min 4

→ 50 m/s

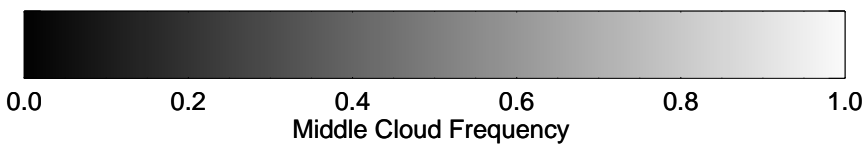
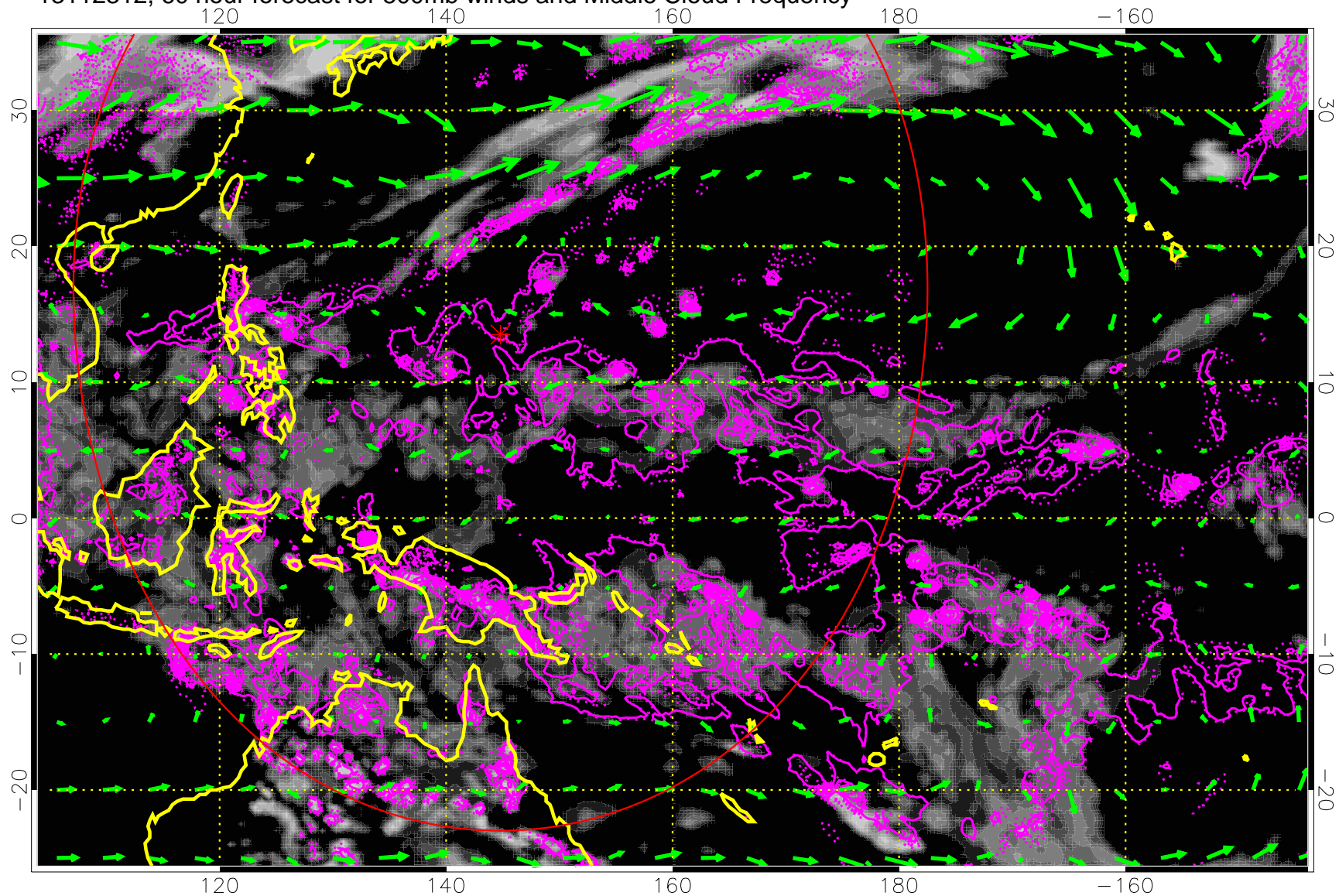
13112306, 54 hour forecast for 500mb winds and Middle Cloud Frequency



Precip (tot dot, conv sol) 6 mm/day contours, min 4

→ 50 m/s

13112312, 60 hour forecast for 500mb winds and Middle Cloud Frequency

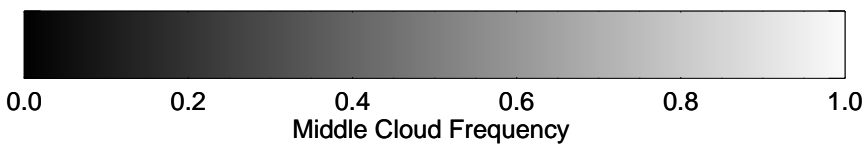
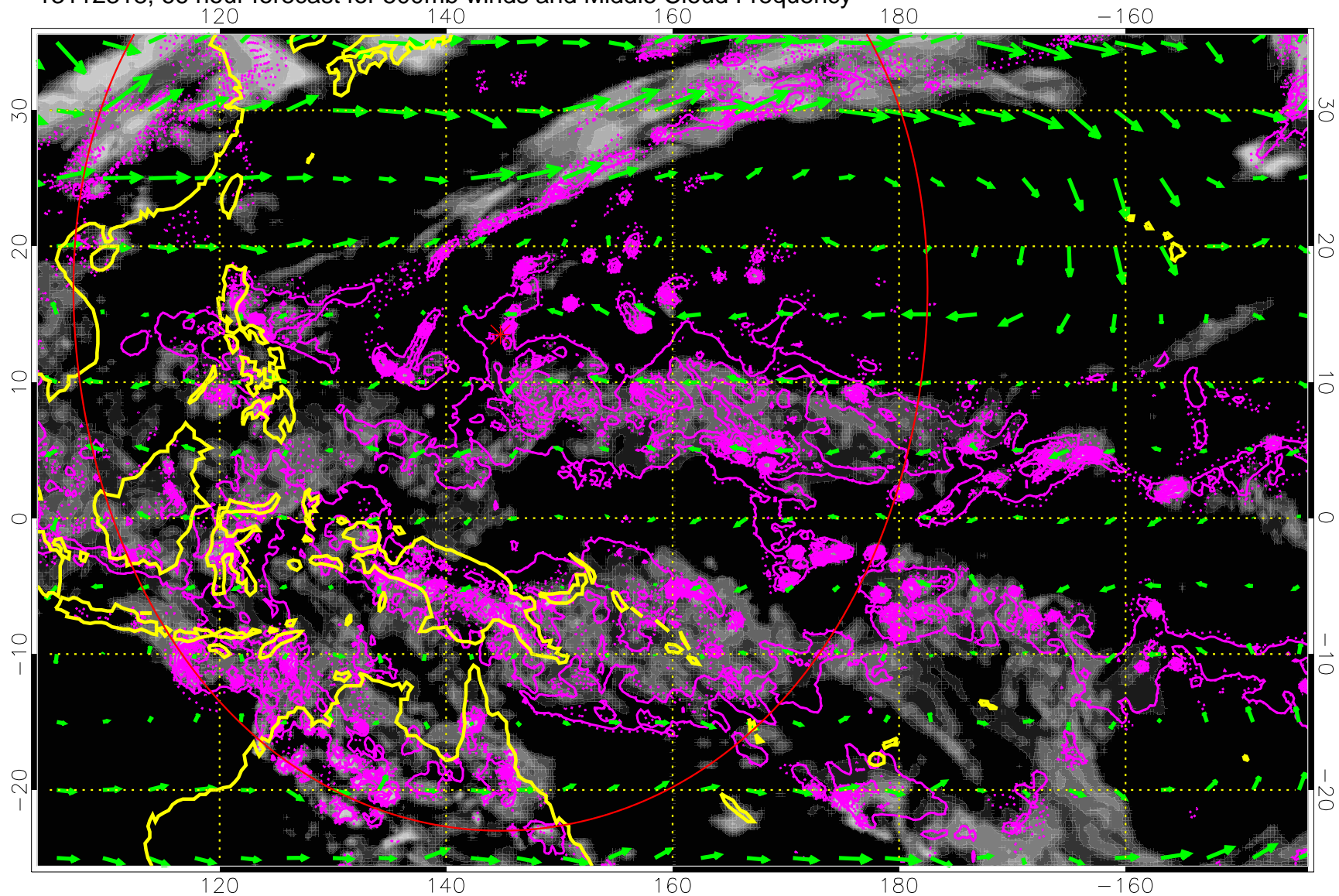


Middle Cloud Frequency

Precip (tot dot, conv sol) 6 mm/day contours, min 4

→ 50 m/s

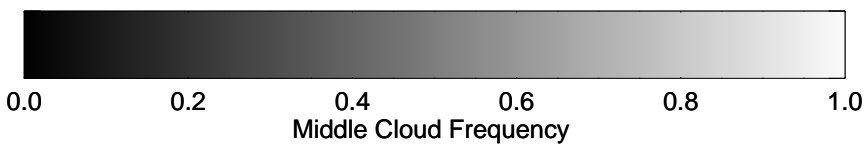
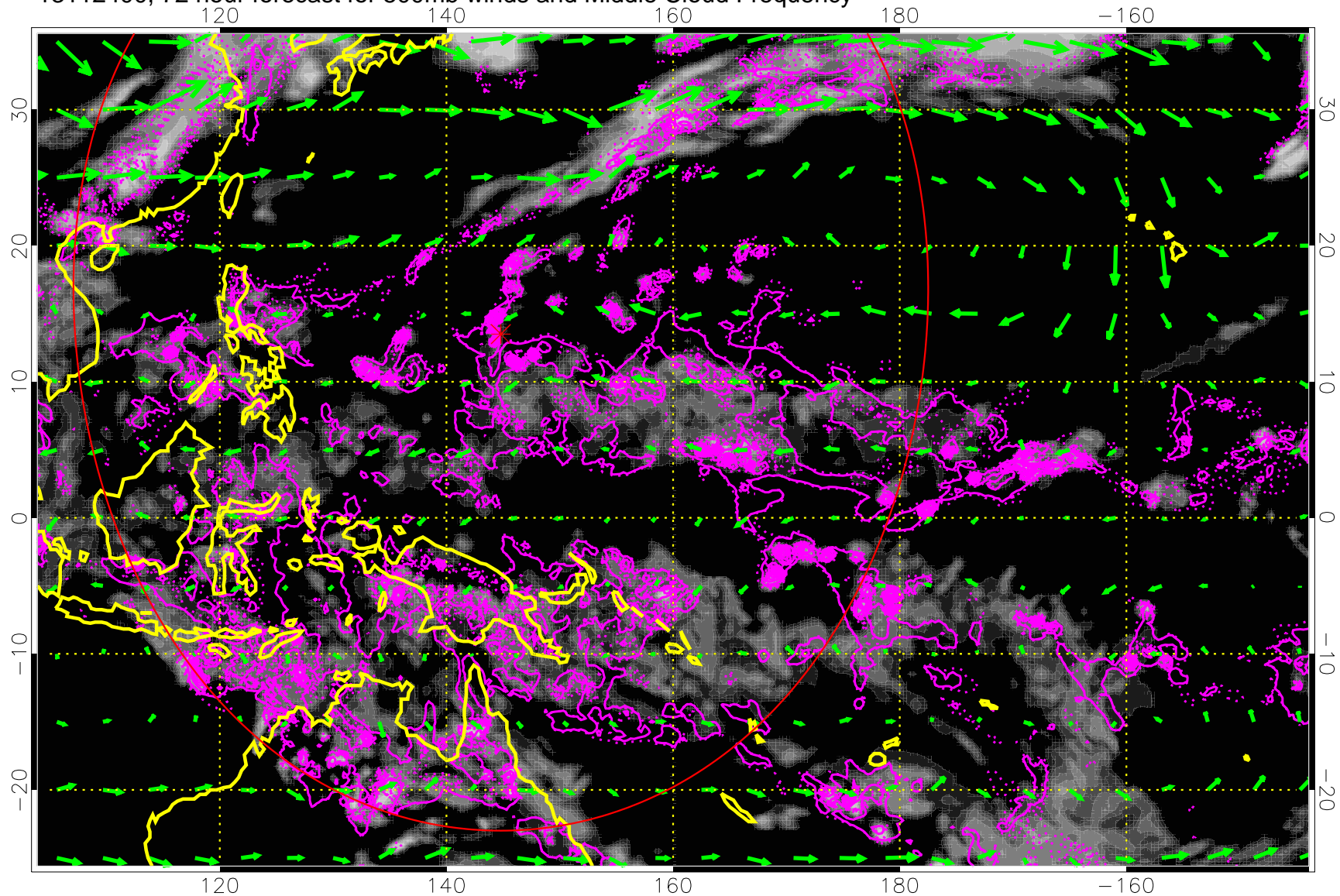
13112318, 66 hour forecast for 500mb winds and Middle Cloud Frequency



Precip (tot dot, conv sol) 6 mm/day contours, min 4

→ 50 m/s

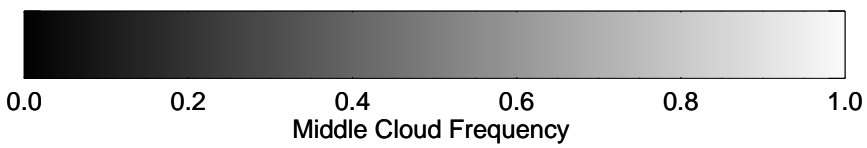
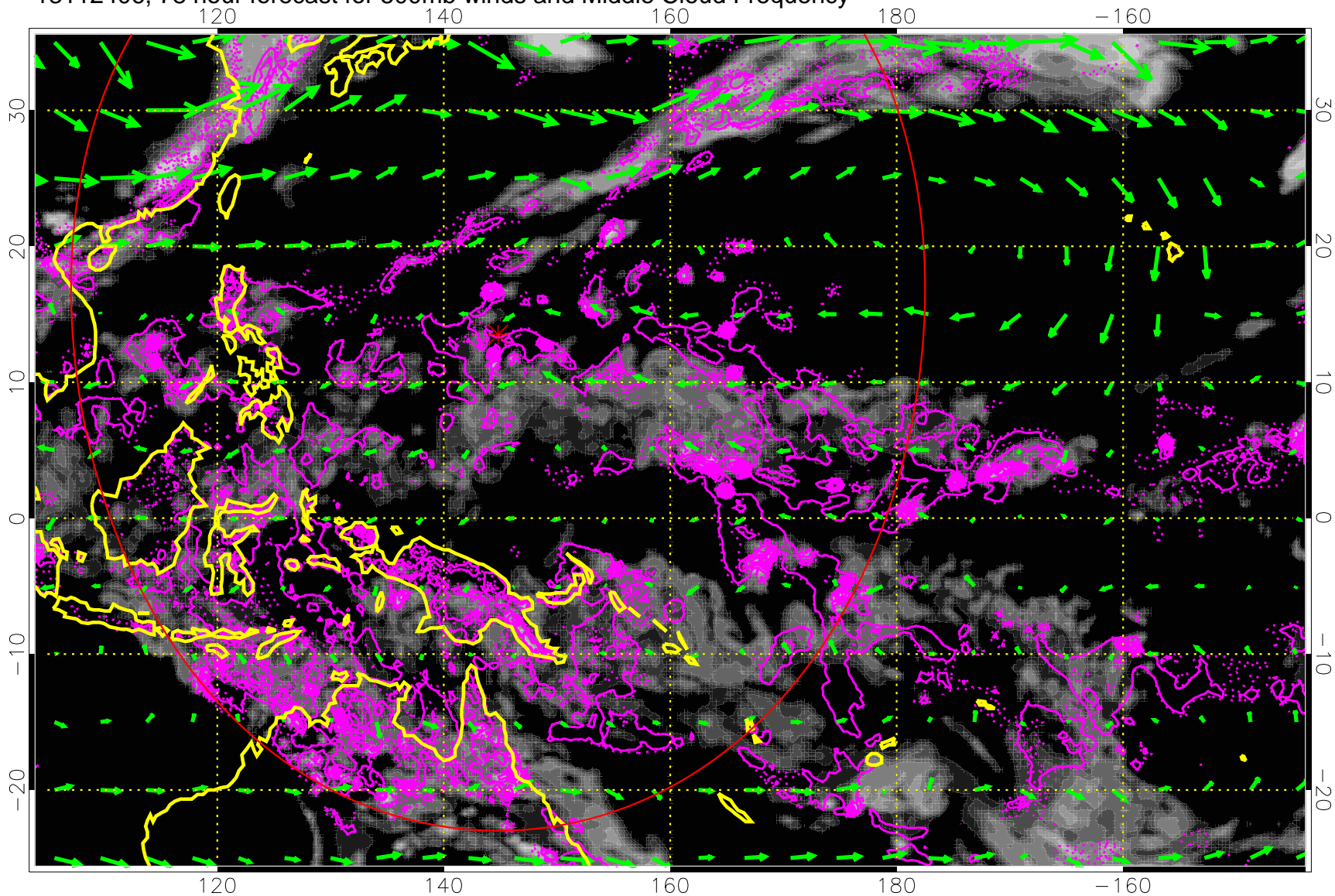
13112400, 72 hour forecast for 500mb winds and Middle Cloud Frequency



Precip (tot dot, conv sol) 6 mm/day contours, min 4

→ 50 m/s

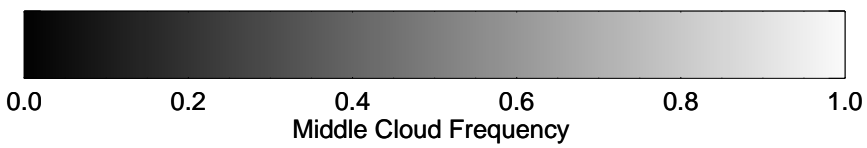
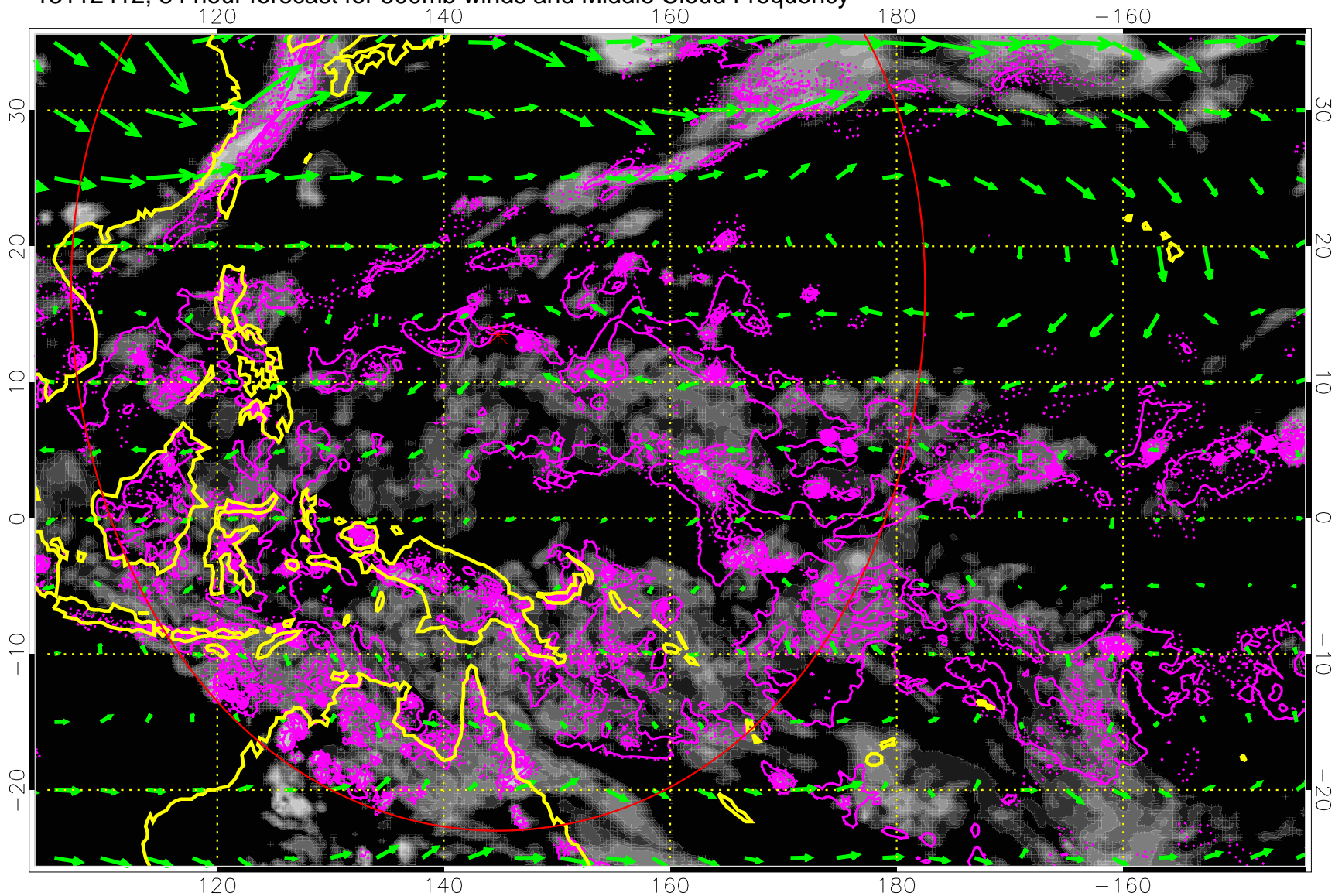
13112406, 78 hour forecast for 500mb winds and Middle Cloud Frequency



Precip (tot dot, conv sol) 6 mm/day contours, min 4

→ 50 m/s

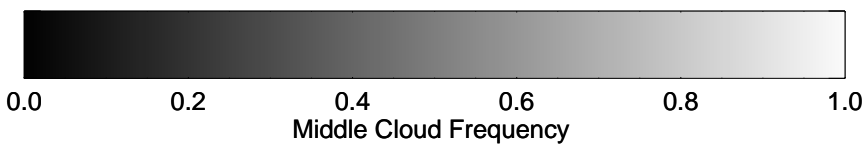
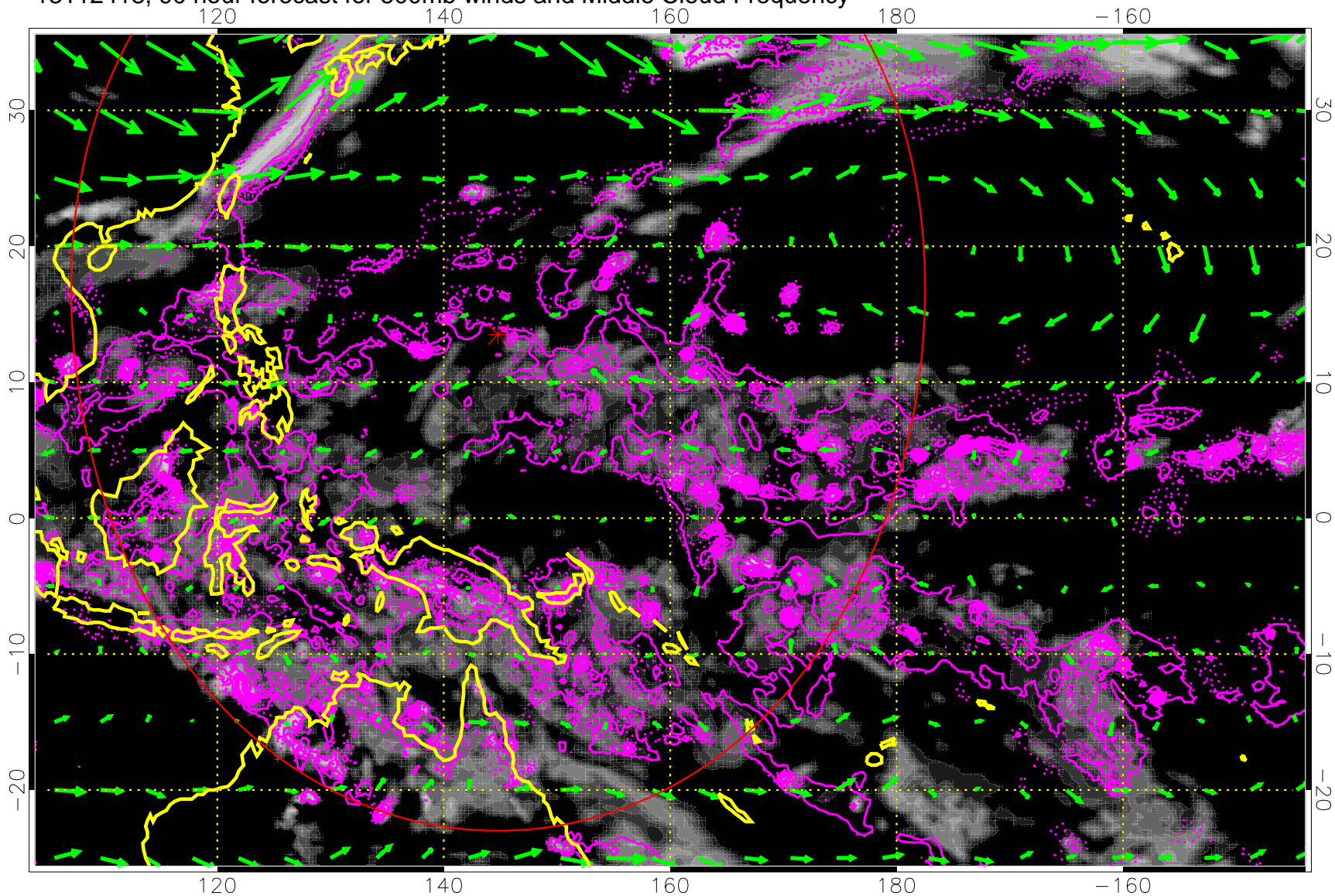
13112412, 84 hour forecast for 500mb winds and Middle Cloud Frequency



Precip (tot dot, conv sol) 6 mm/day contours, min 4

→ 50 m/s

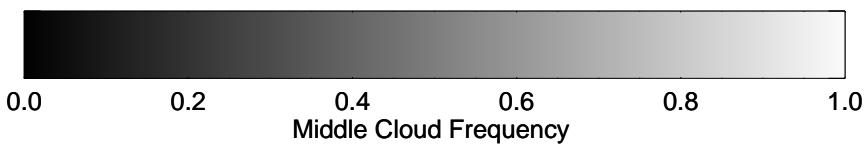
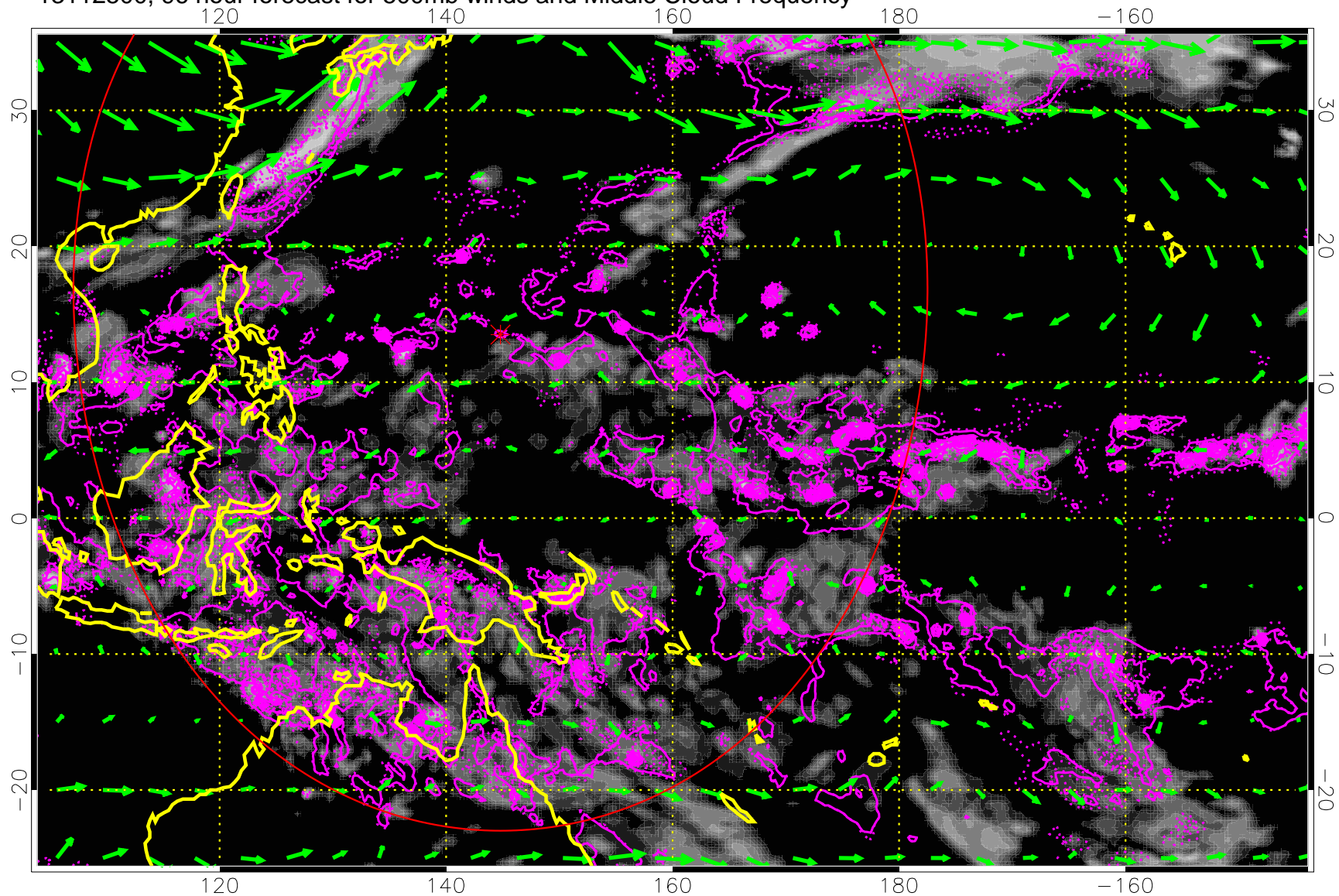
13112418, 90 hour forecast for 500mb winds and Middle Cloud Frequency



Precip (tot dot, conv sol) 6 mm/day contours, min 4

→ 50 m/s

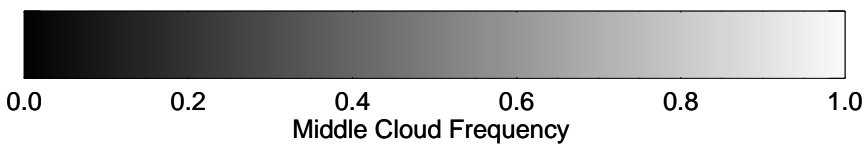
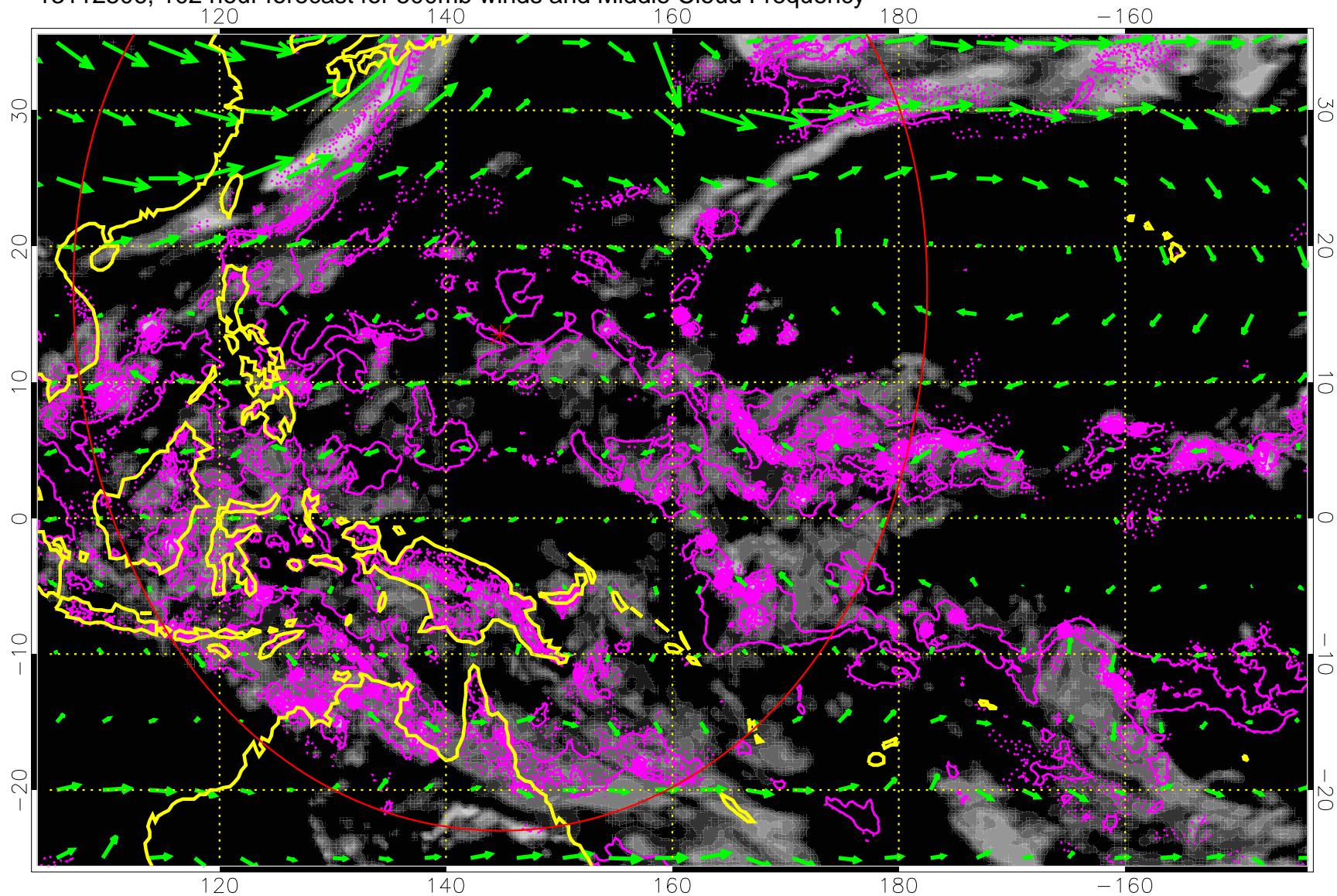
13112500, 96 hour forecast for 500mb winds and Middle Cloud Frequency



Precip (tot dot, conv sol) 6 mm/day contours, min 4

→ 50 m/s

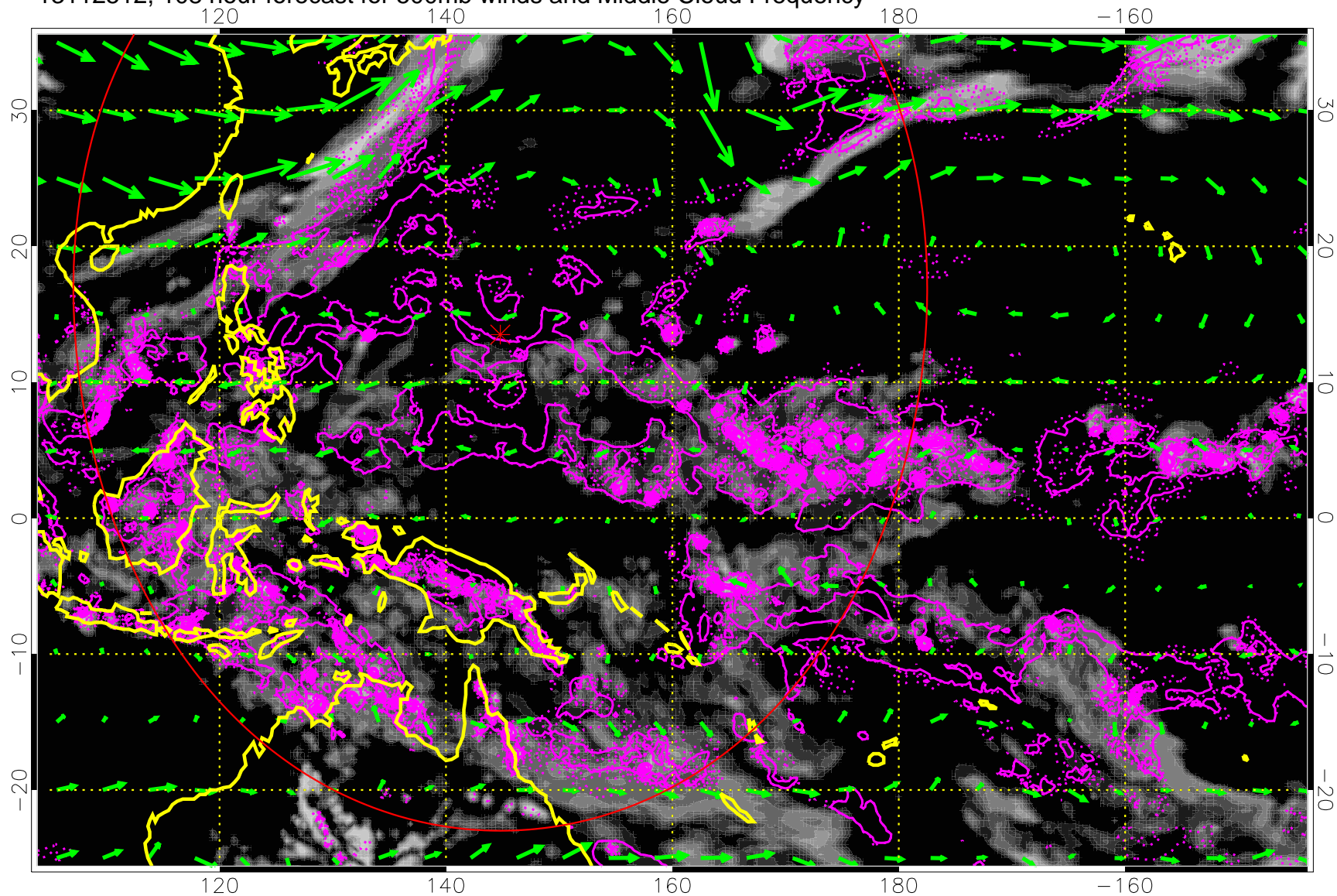
13112506, 102 hour forecast for 500mb winds and Middle Cloud Frequency



Precip (tot dot, conv sol) 6 mm/day contours, min 4

→ 50 m/s

13112512, 108 hour forecast for 500mb winds and Middle Cloud Frequency

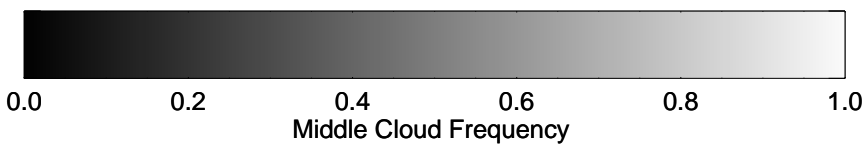
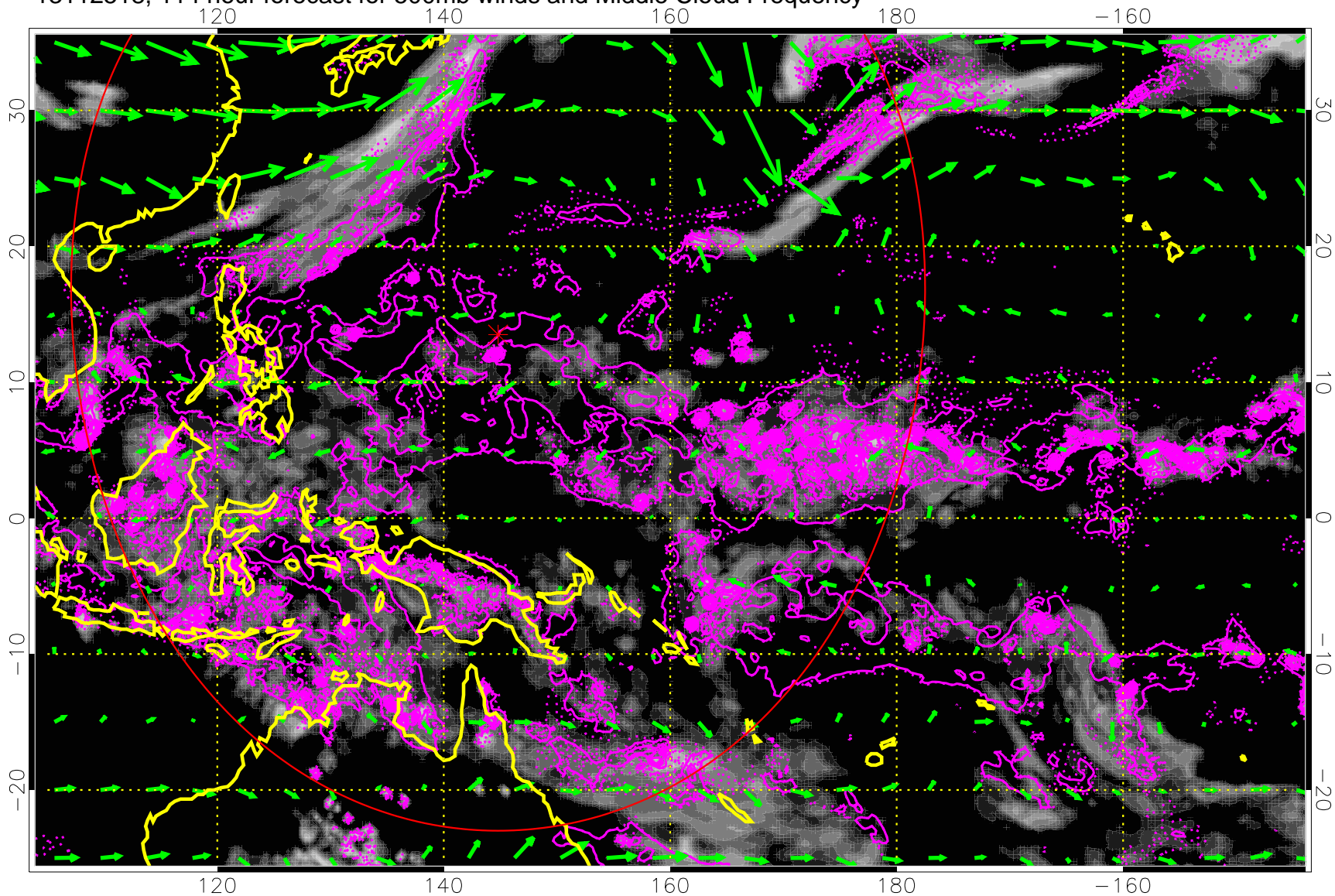


Middle Cloud Frequency

Precip (tot dot, conv sol) 6 mm/day contours, min 4

→ 50 m/s

13112518, 114 hour forecast for 500mb winds and Middle Cloud Frequency



Precip (tot dot, conv sol) 6 mm/day contours, min 4

→ 50 m/s