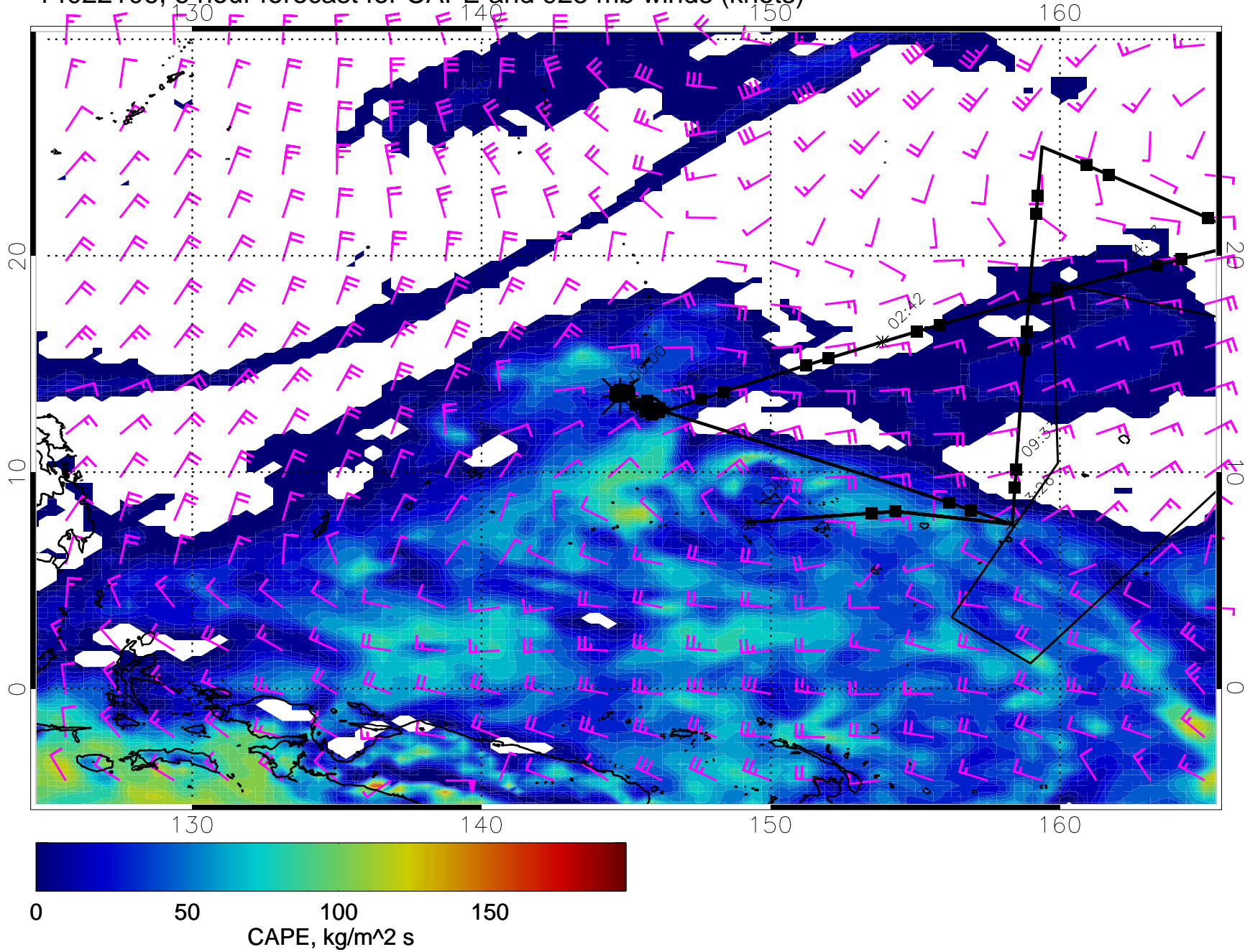
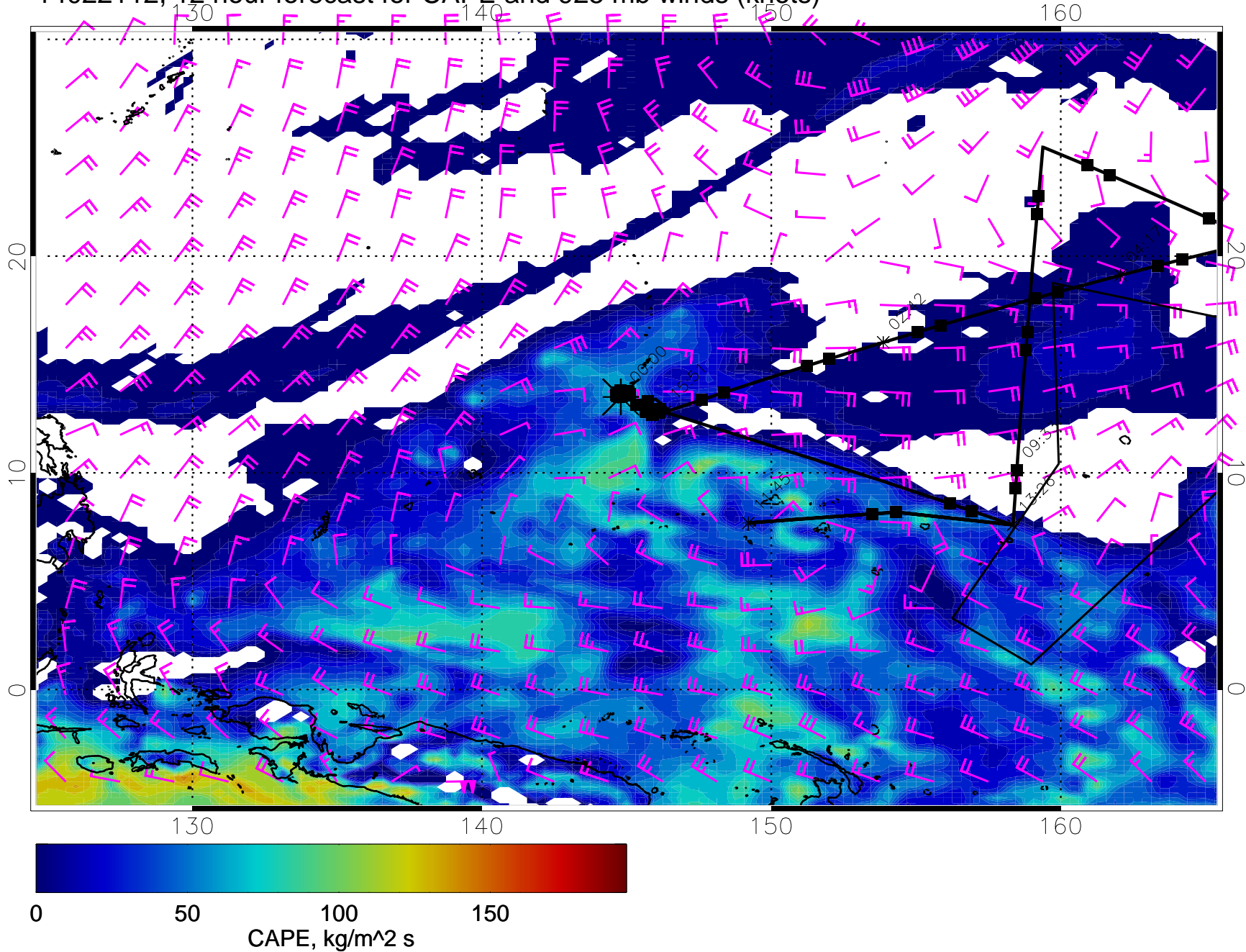


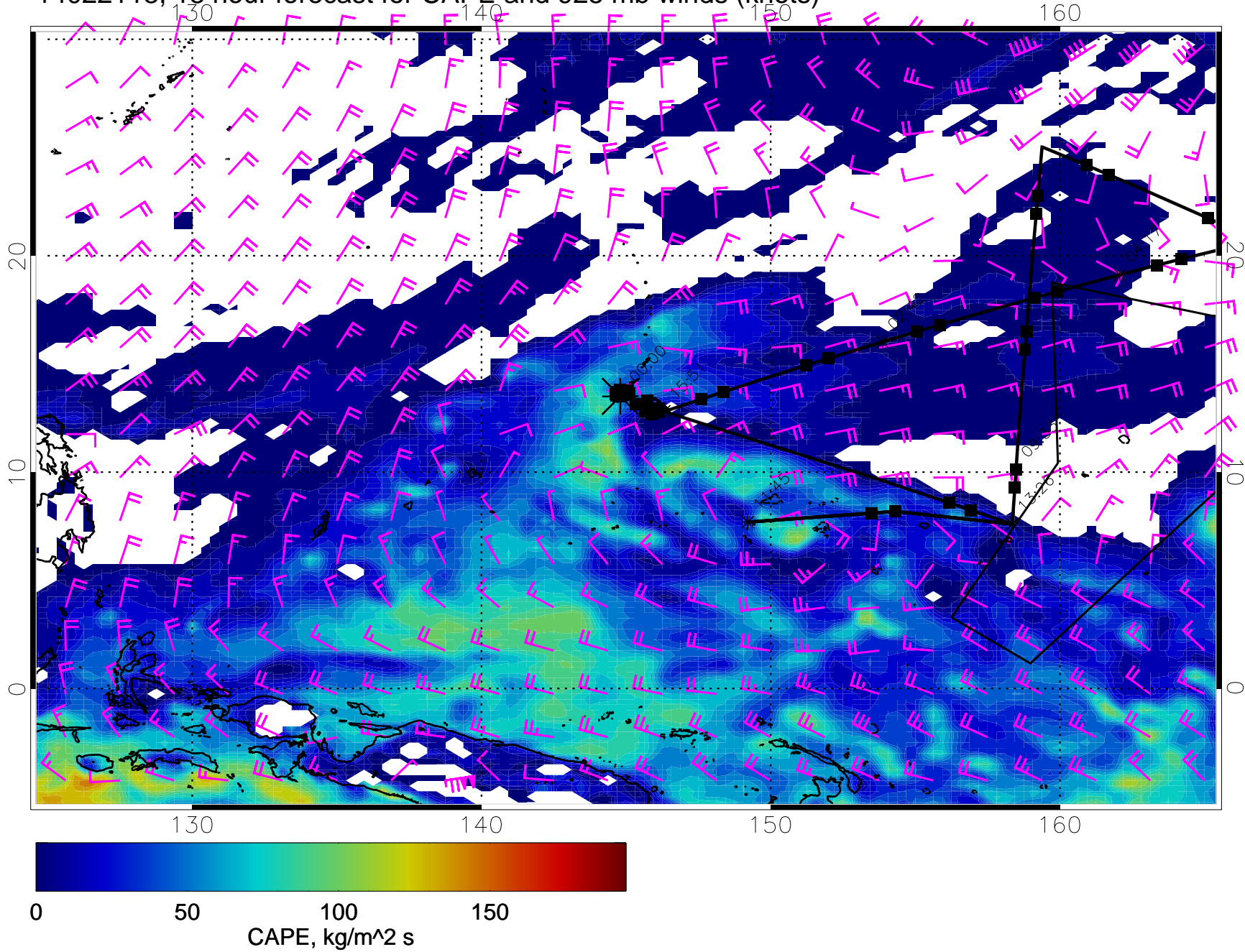
14022106, 6 hour forecast for CAPE and 925 mb winds (knots)



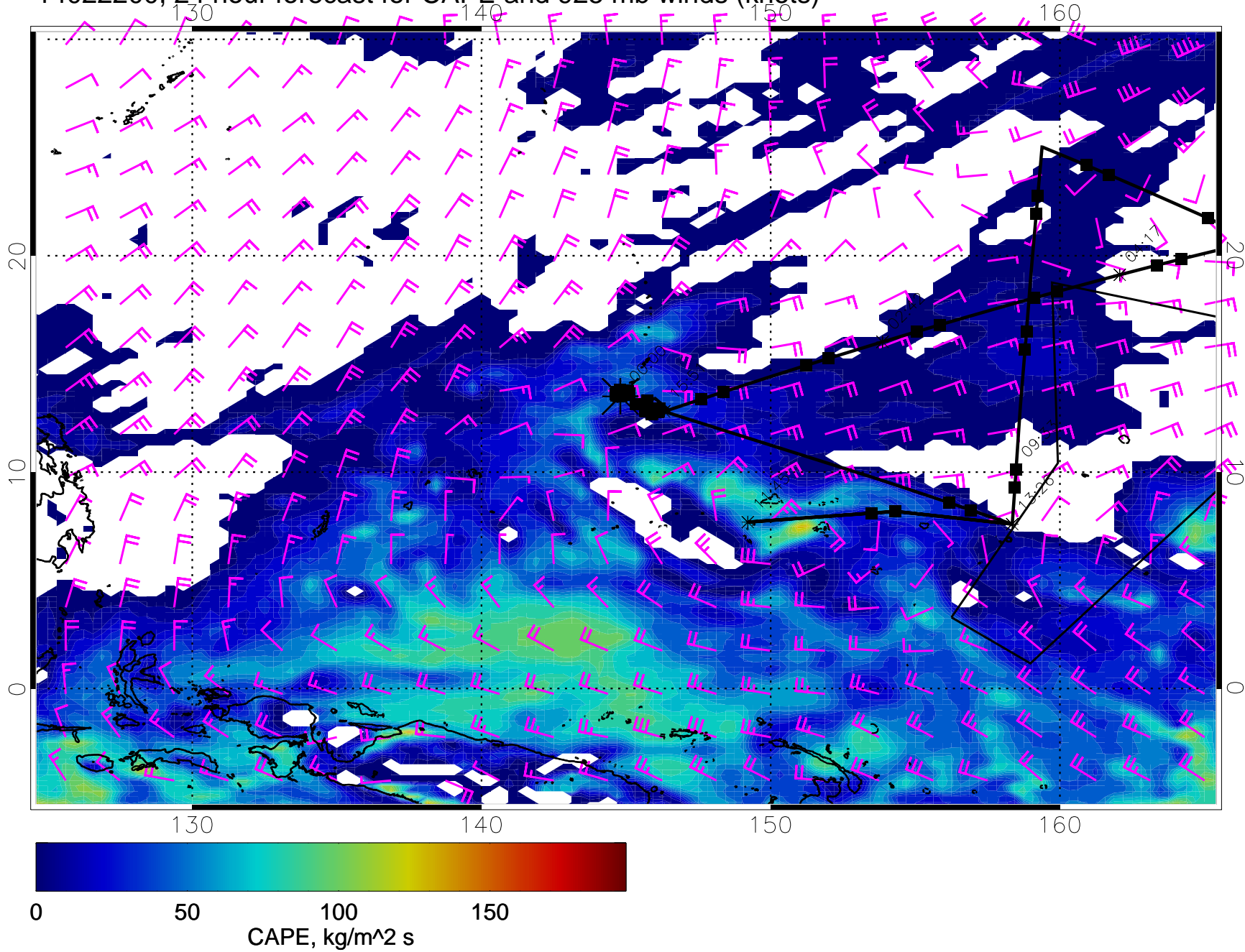
14022112, 12 hour forecast for CAPE and 925 mb winds (knots)



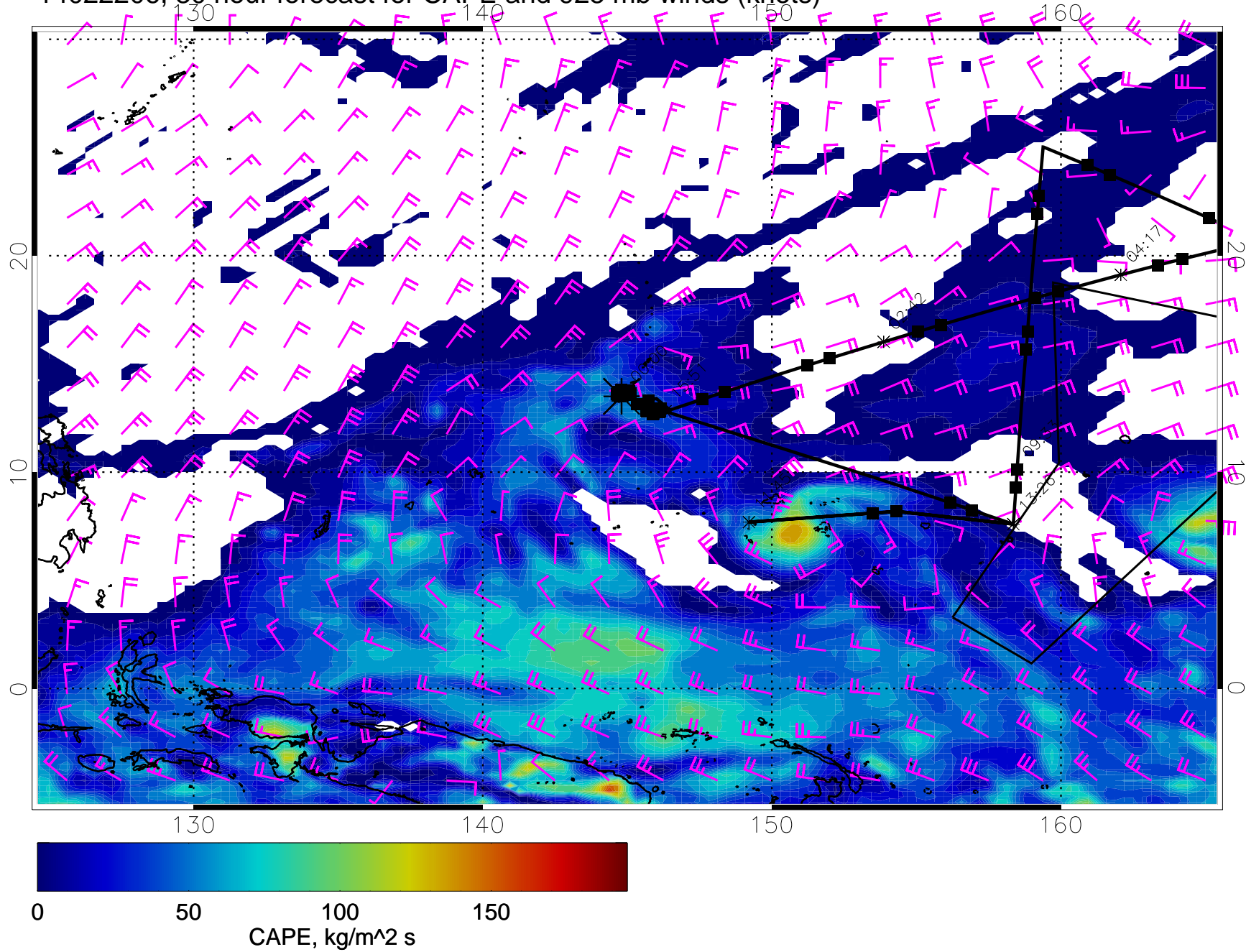
14022118, 18 hour forecast for CAPE and 925 mb winds (knots)



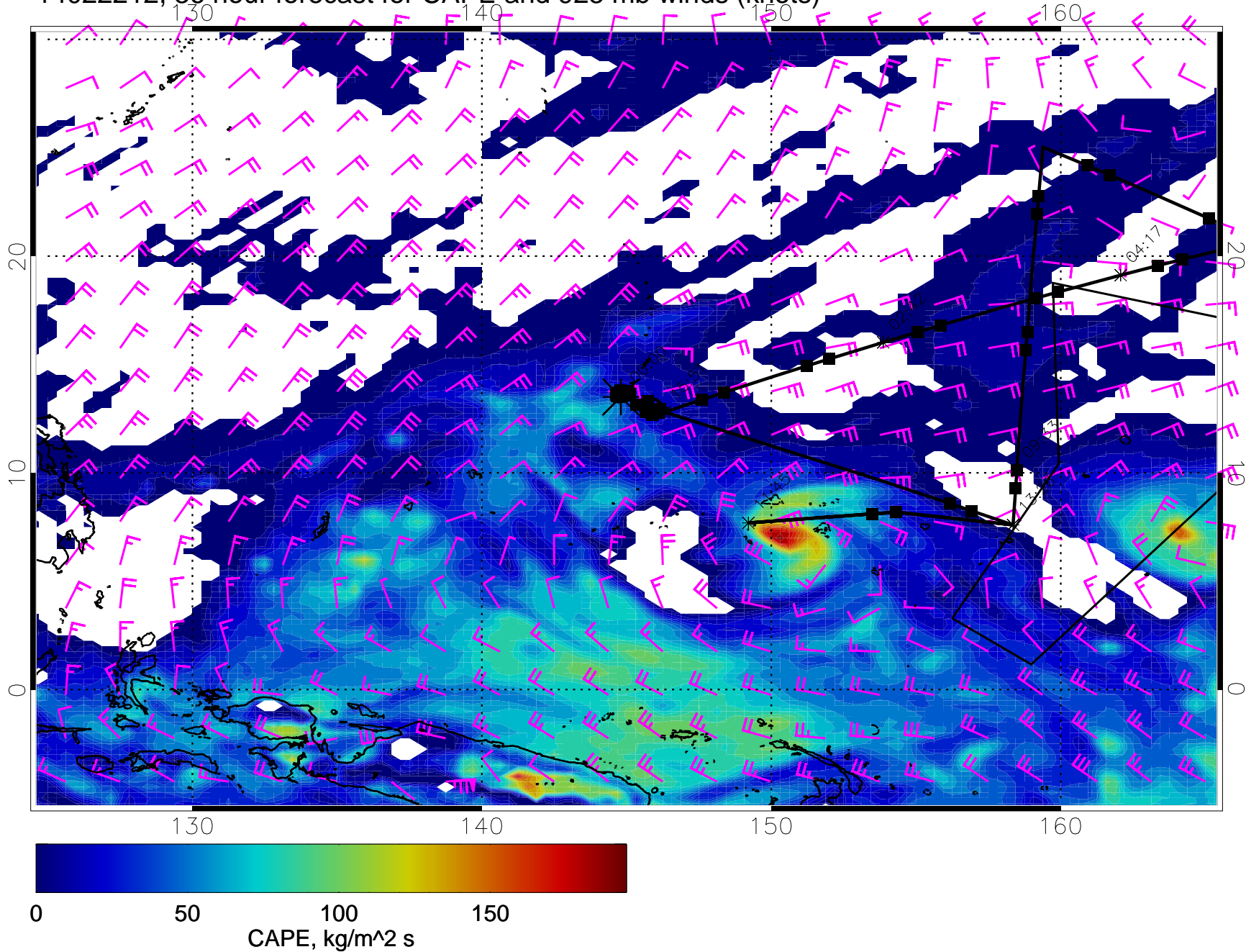
14022200, 24 hour forecast for CAPE and 925 mb winds (knots)



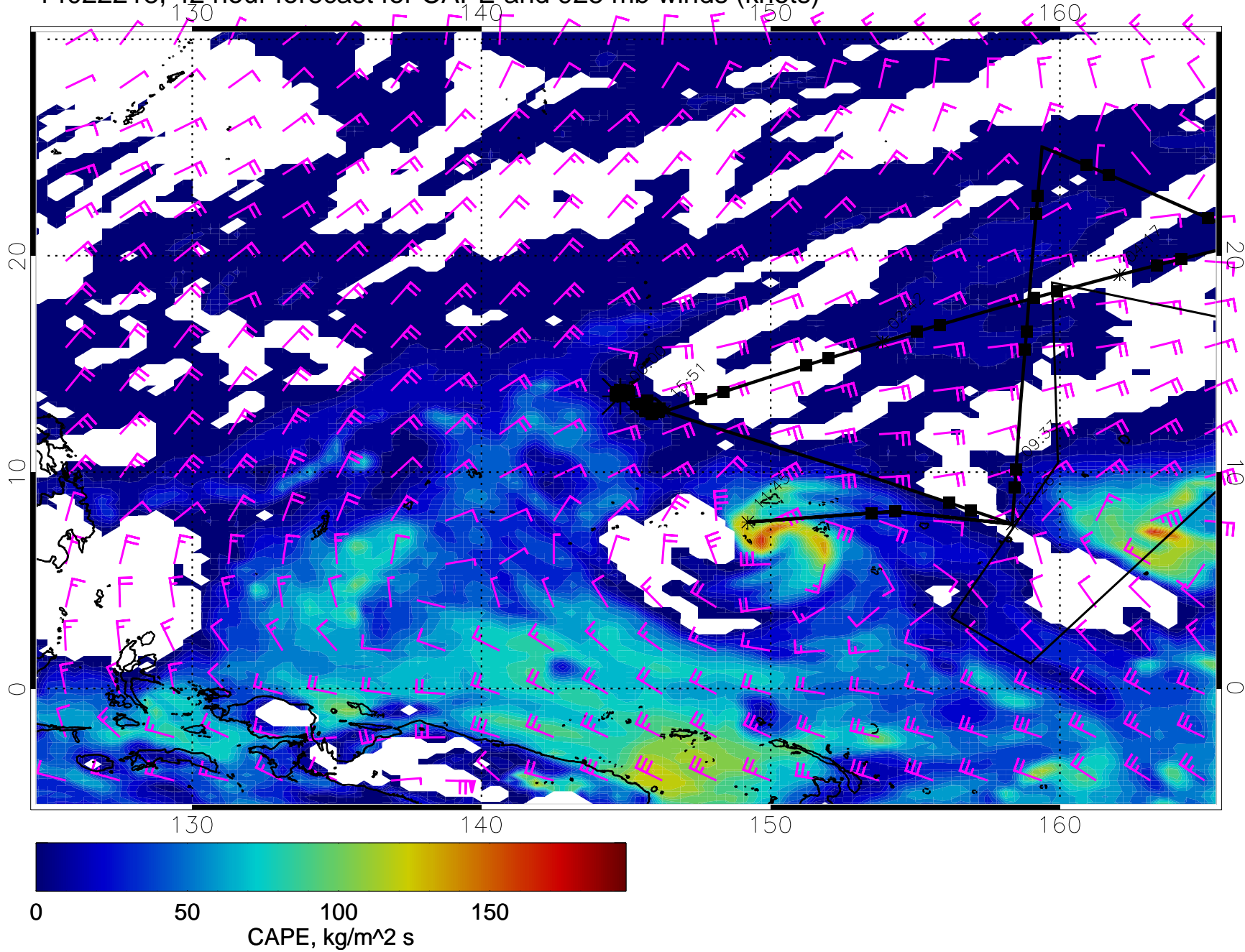
14022206, 30 hour forecast for CAPE and 925 mb winds (knots)



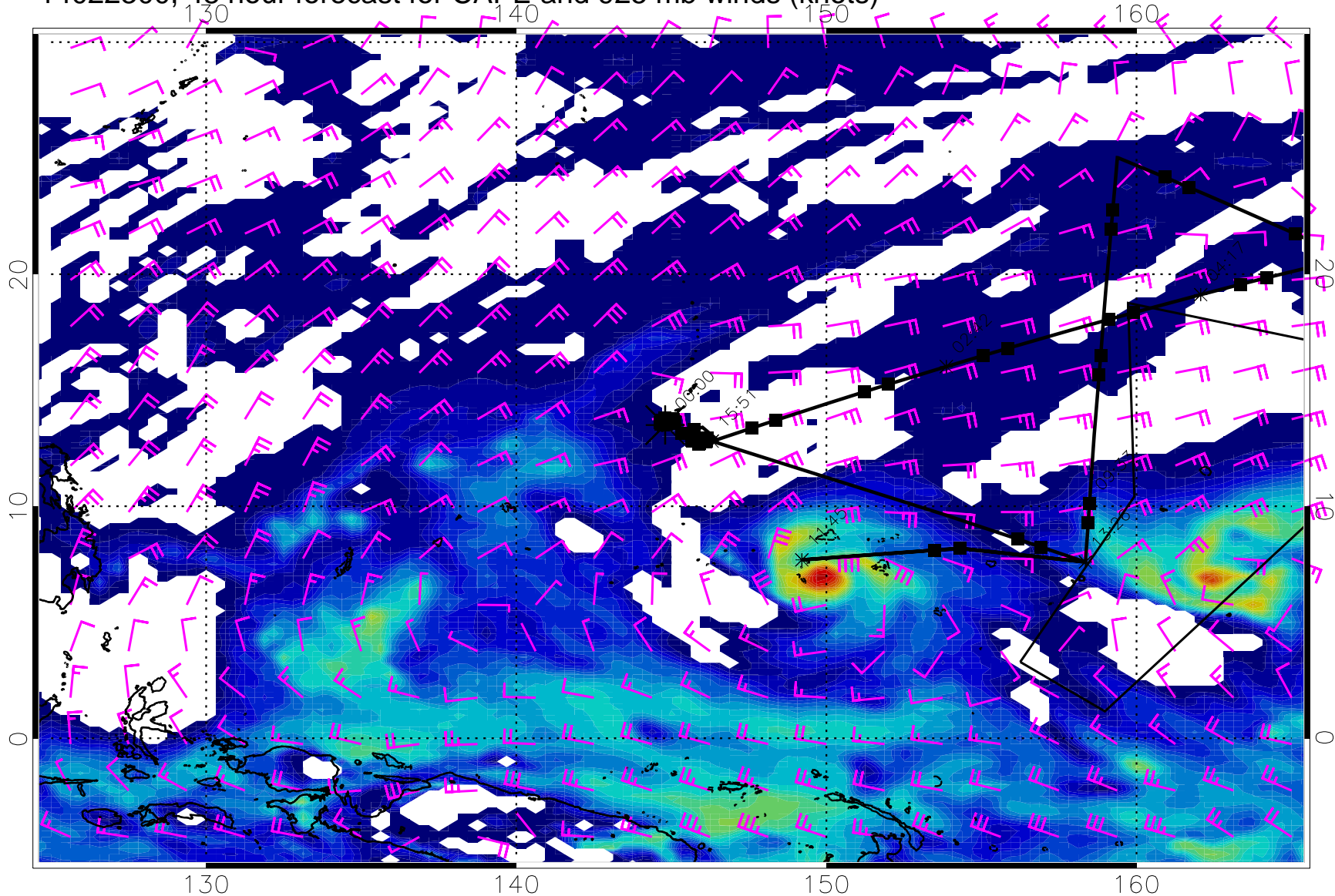
14022212, 36 hour forecast for CAPE and 925 mb winds (knots)



14022218, 42 hour forecast for CAPE and 925 mb winds (knots)

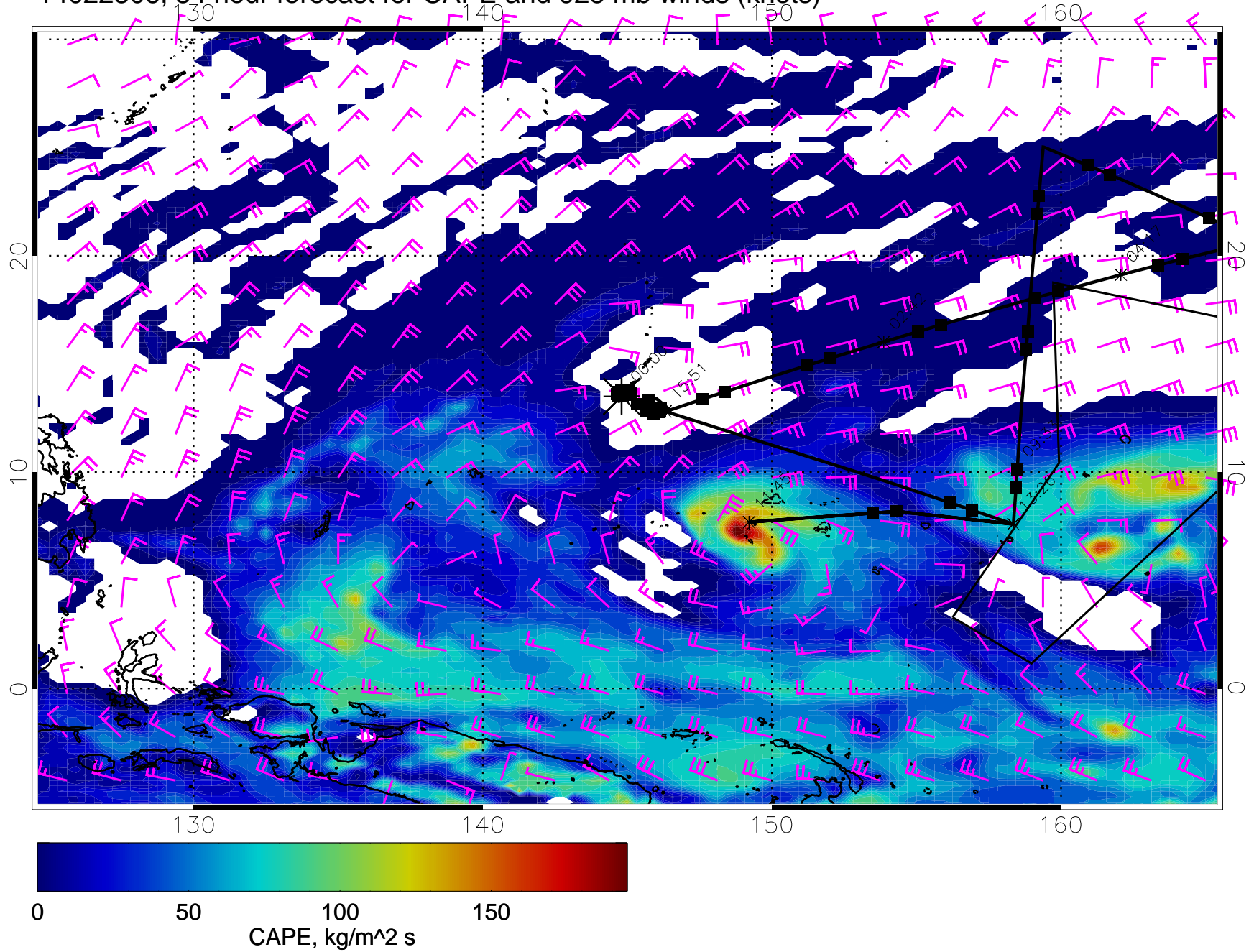


14022300, 48 hour forecast for CAPE and 925 mb winds (knots)

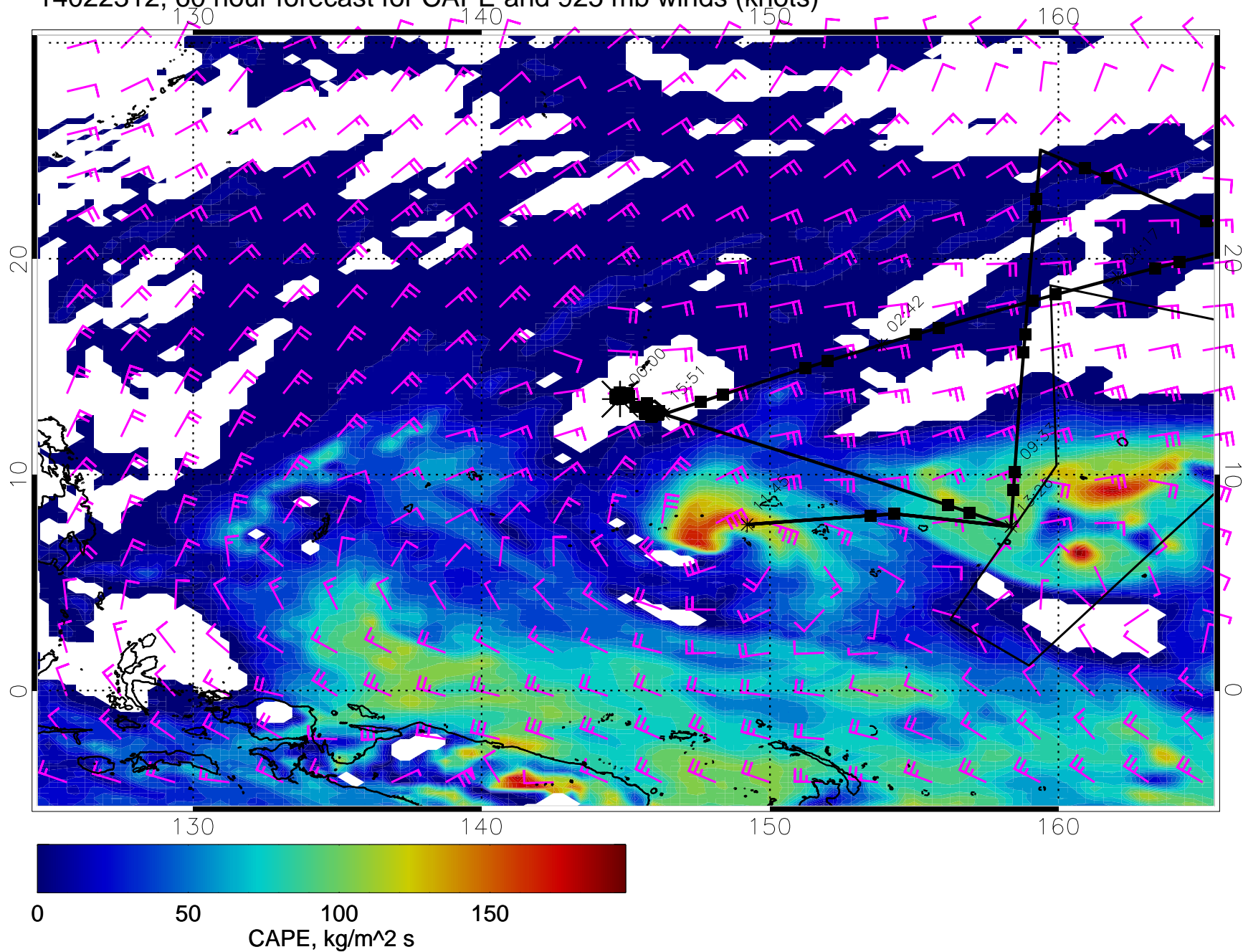


0 50 100 150
CAPE, kg/m² s

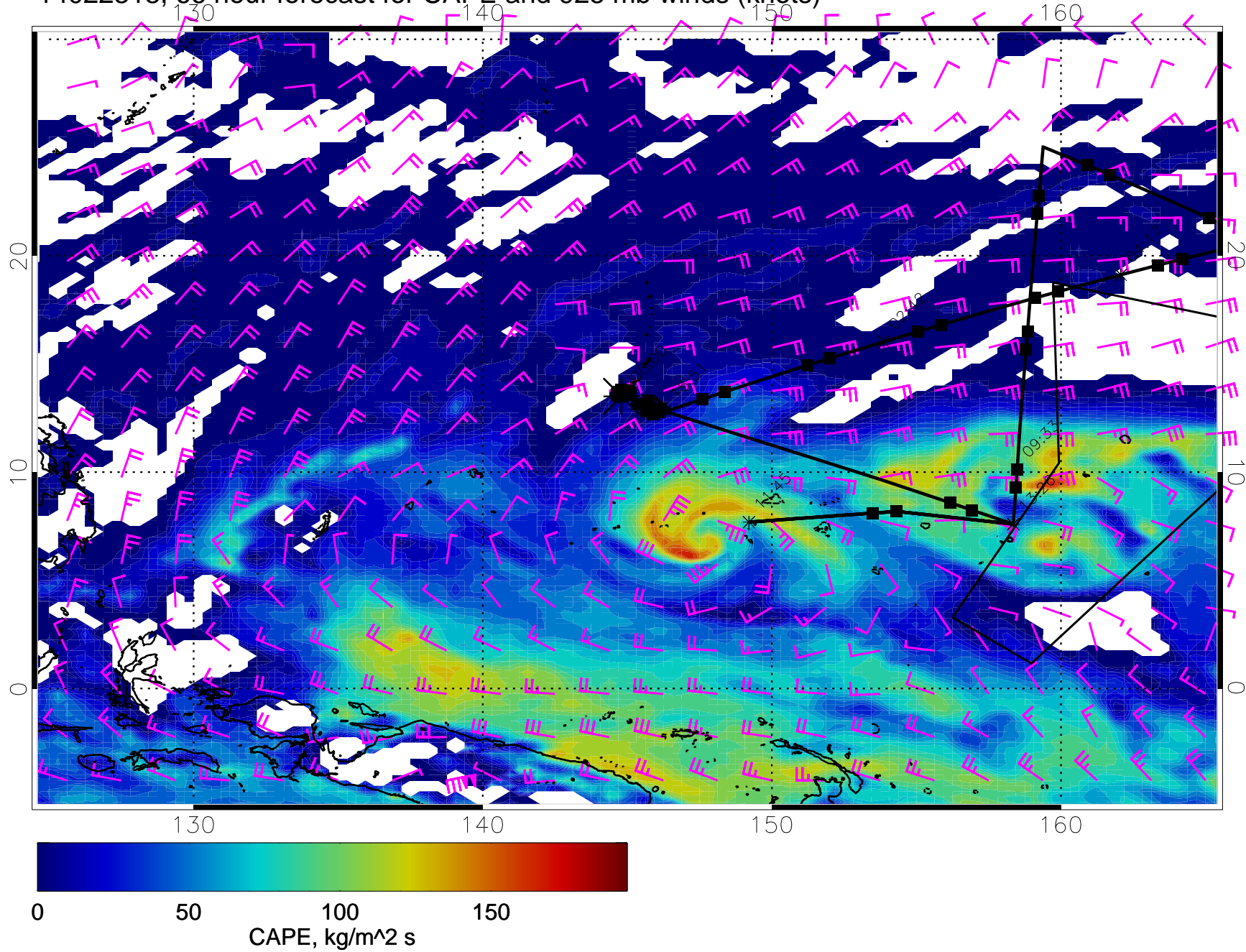
14022306, 54 hour forecast for CAPE and 925 mb winds (knots)



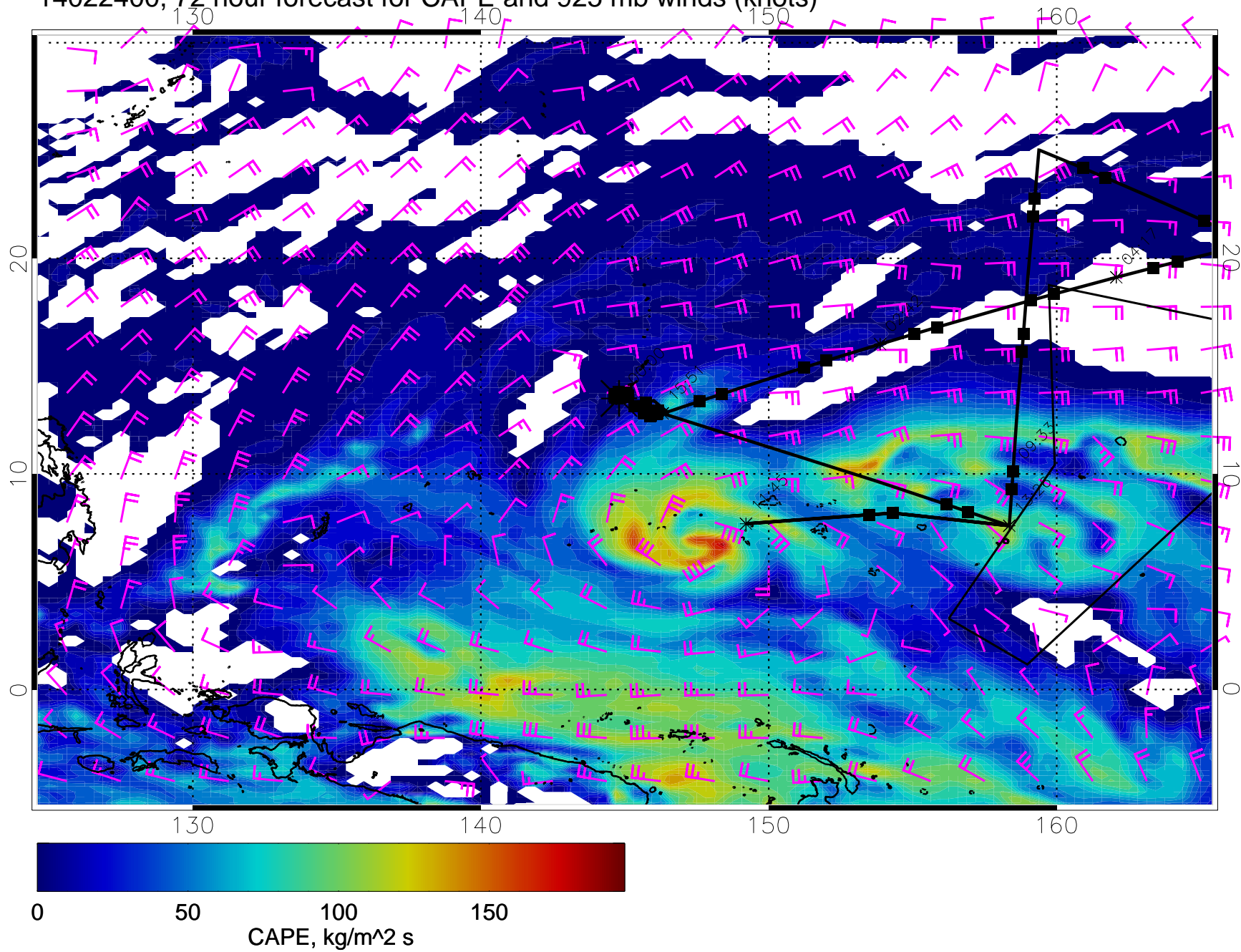
14022312, 60 hour forecast for CAPE and 925 mb winds (knots)



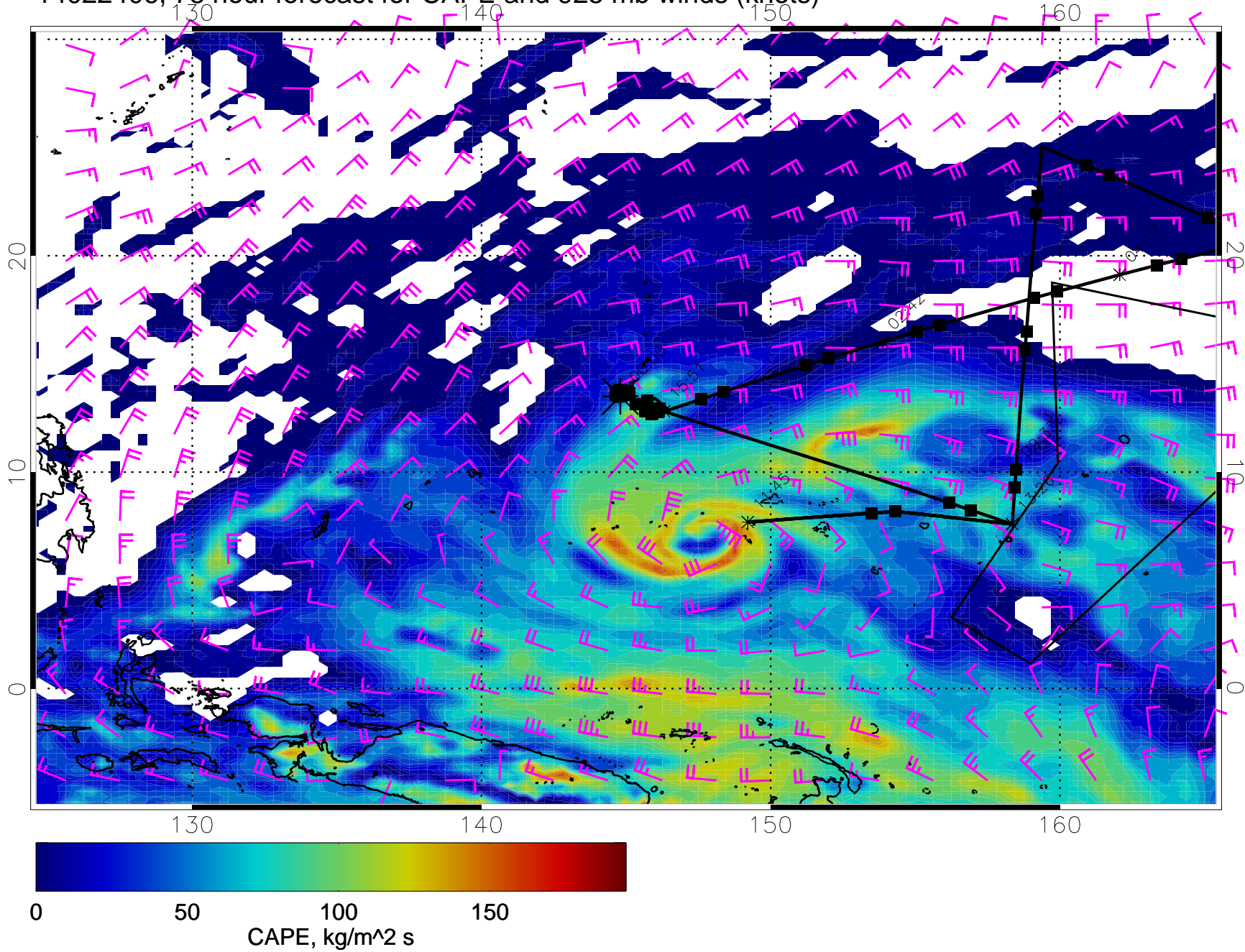
14022318, 66 hour forecast for CAPE and 925 mb winds (knots)



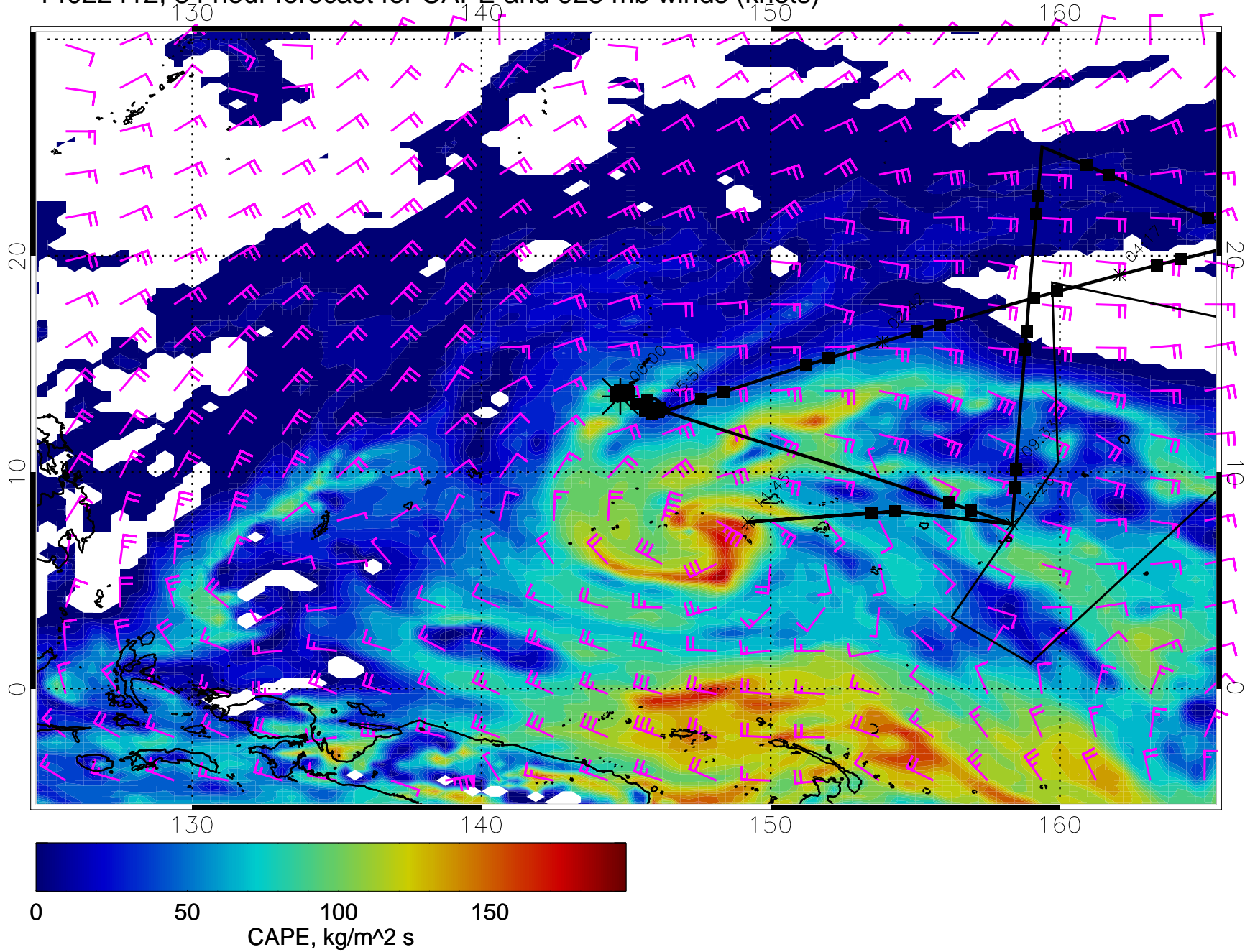
14022400, 72 hour forecast for CAPE and 925 mb winds (knots)



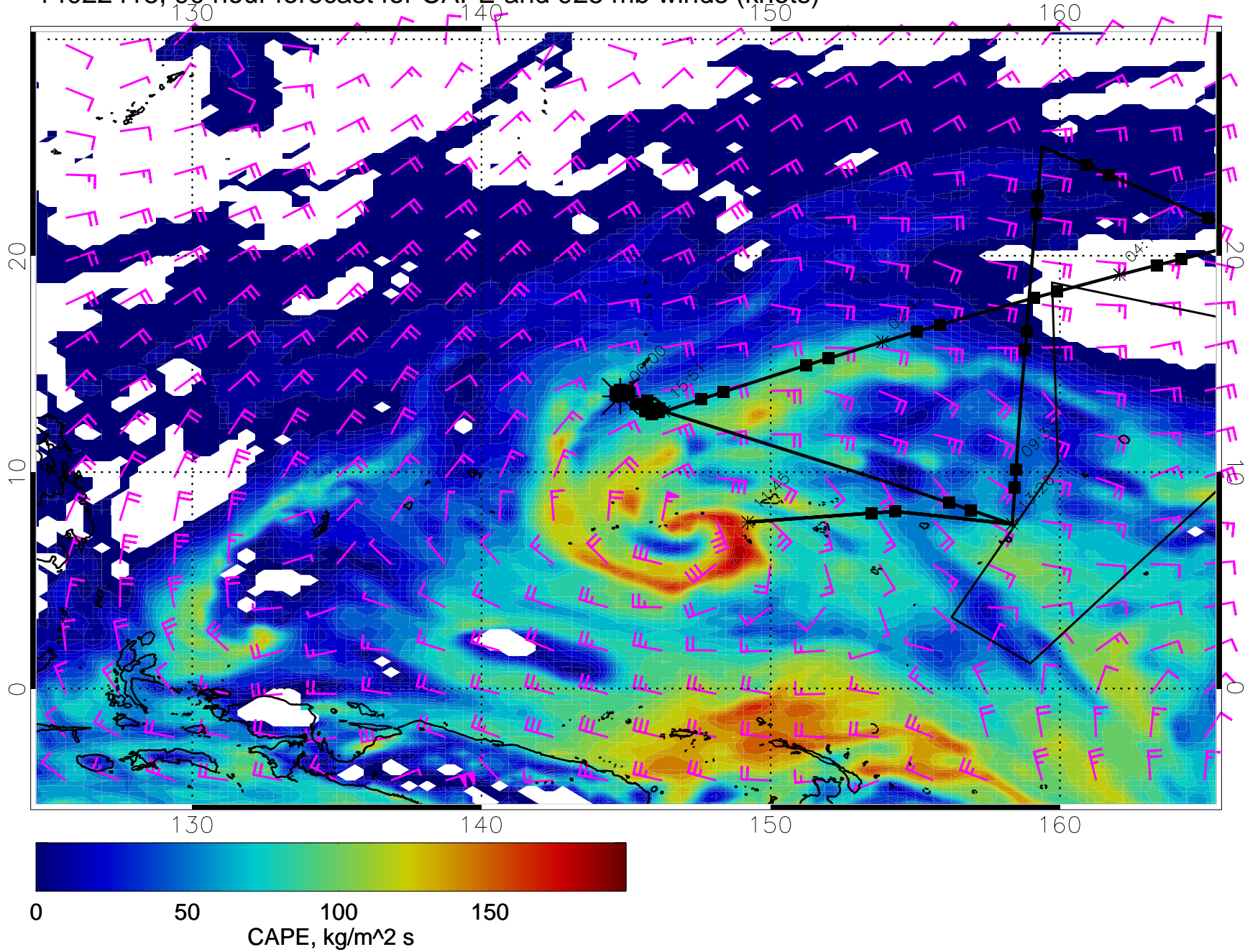
14022406, 78 hour forecast for CAPE and 925 mb winds (knots)



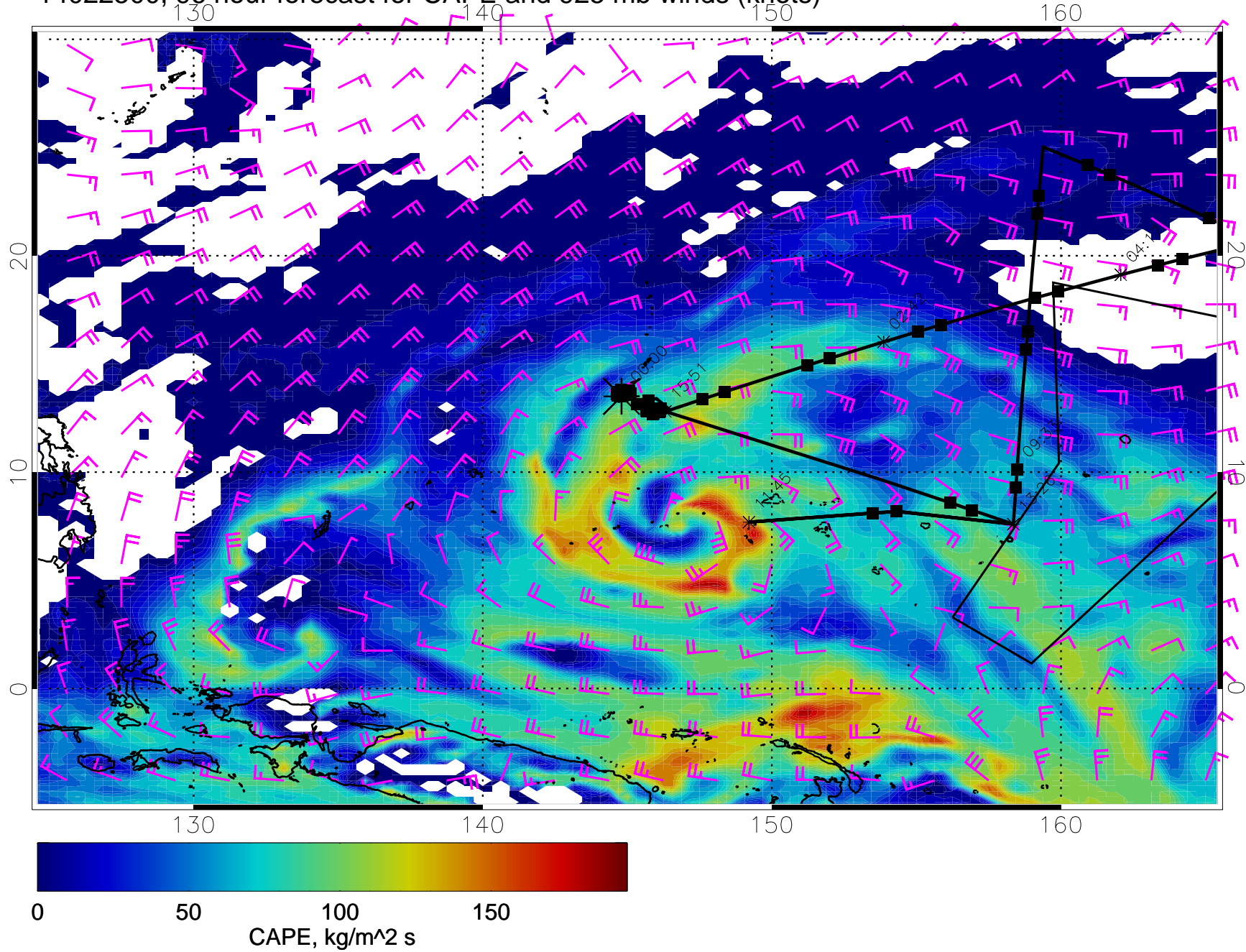
14022412, 84 hour forecast for CAPE and 925 mb winds (knots)



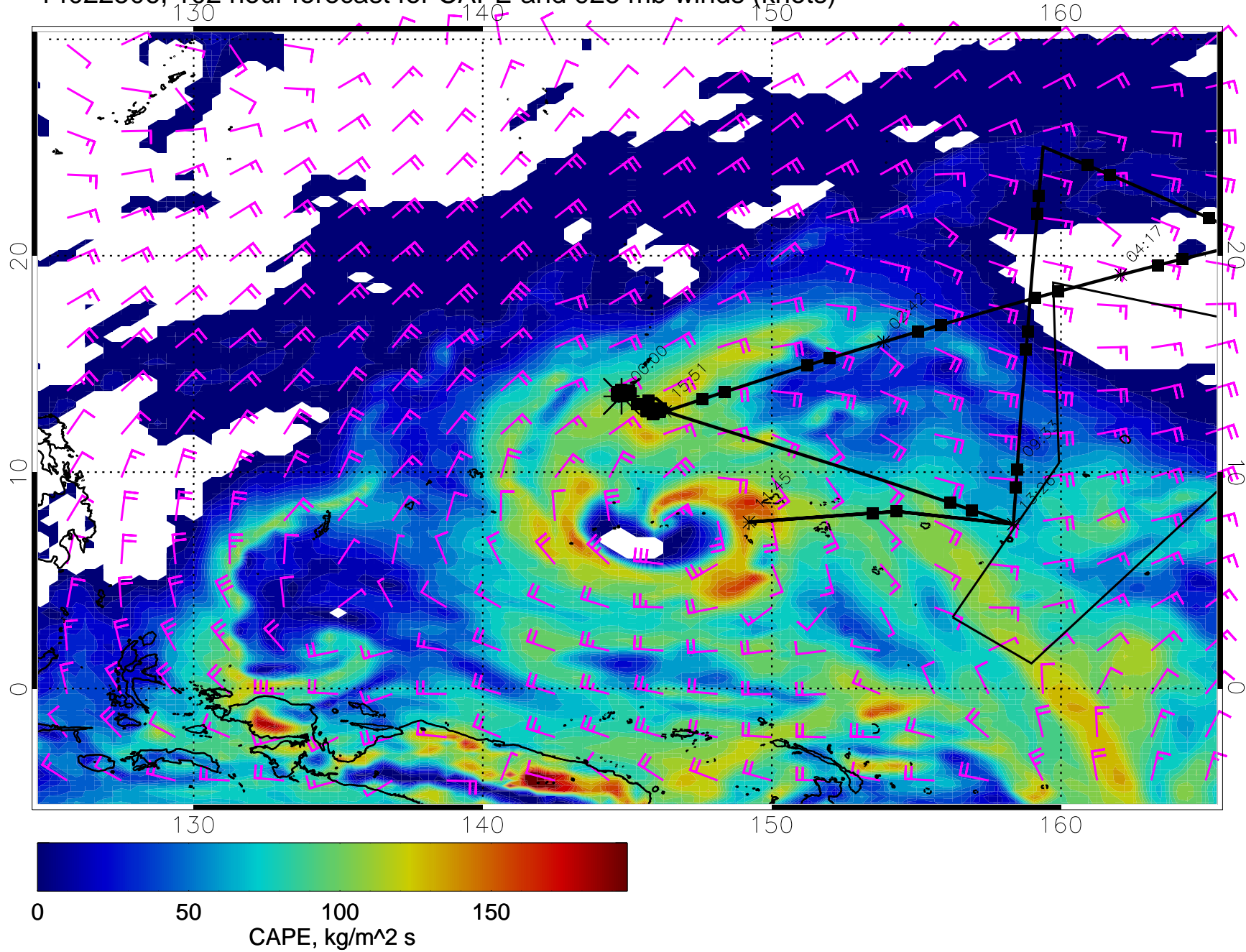
14022418, 90 hour forecast for CAPE and 925 mb winds (knots)



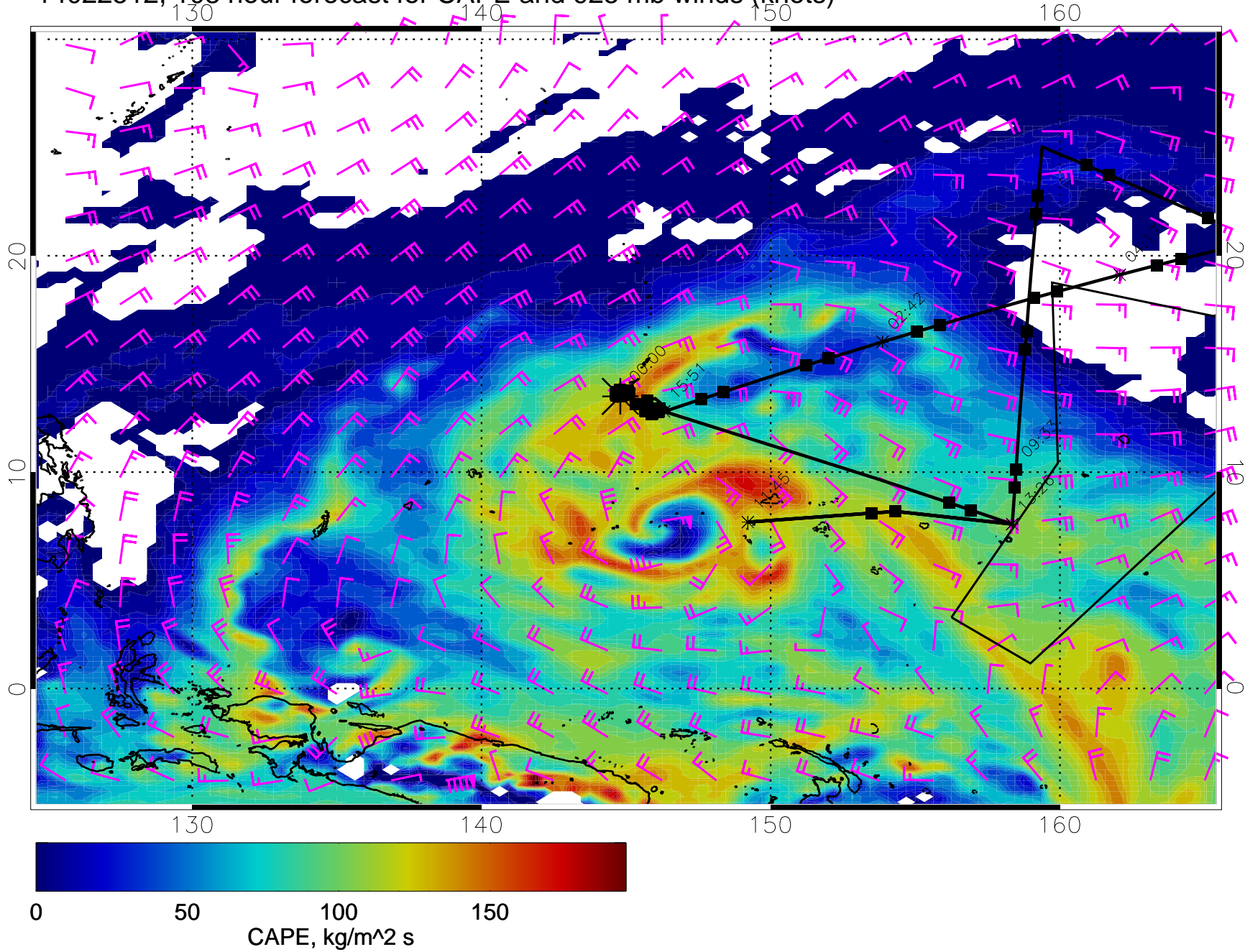
14022500, 96 hour forecast for CAPE and 925 mb winds (knots)



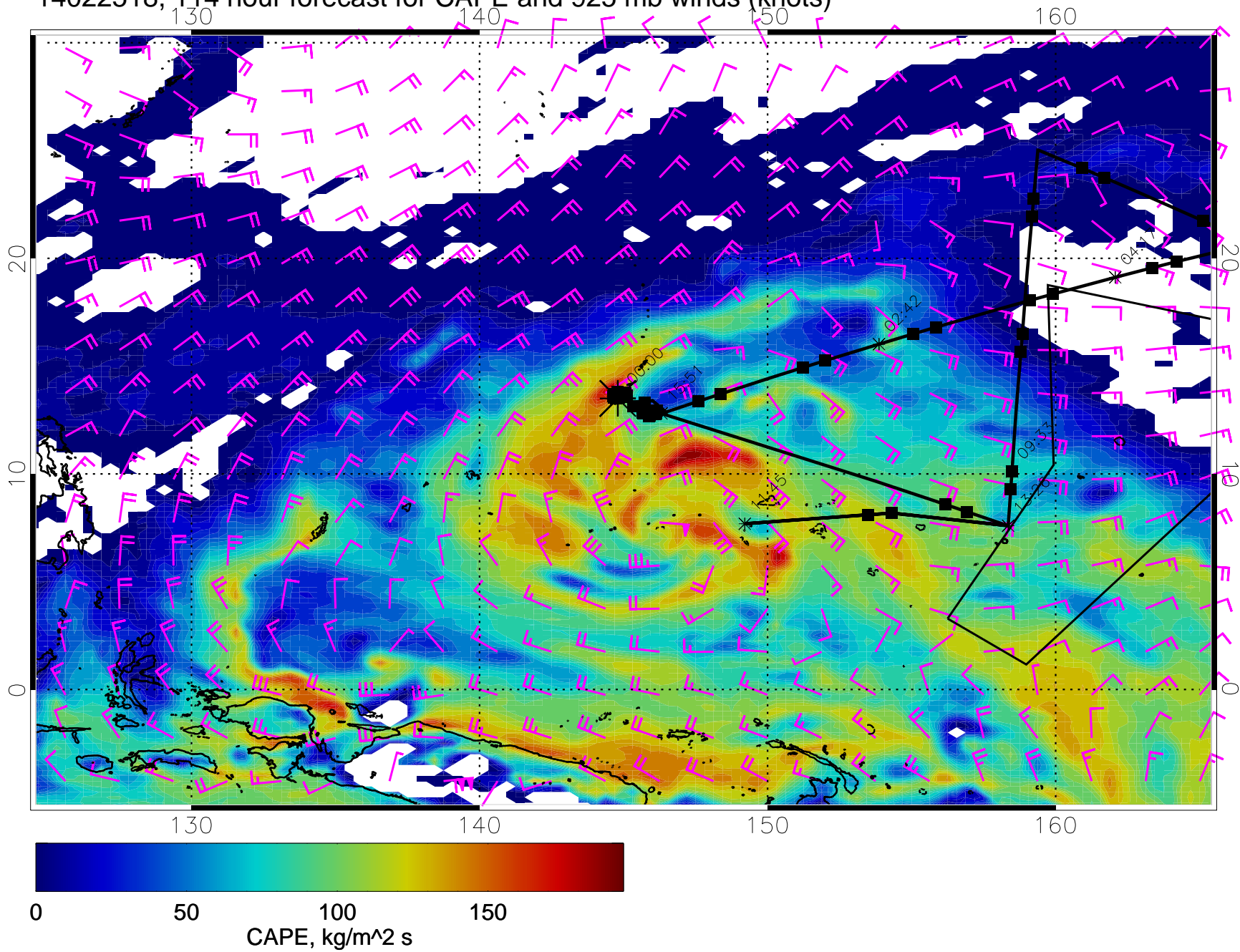
14022506, 102 hour forecast for CAPE and 925 mb winds (knots)



14022512, 108 hour forecast for CAPE and 925 mb winds (knots)



14022518, 114 hour forecast for CAPE and 925 mb winds (knots)



14022600, 120 hour forecast for CAPE and 925 mb winds (knots)

