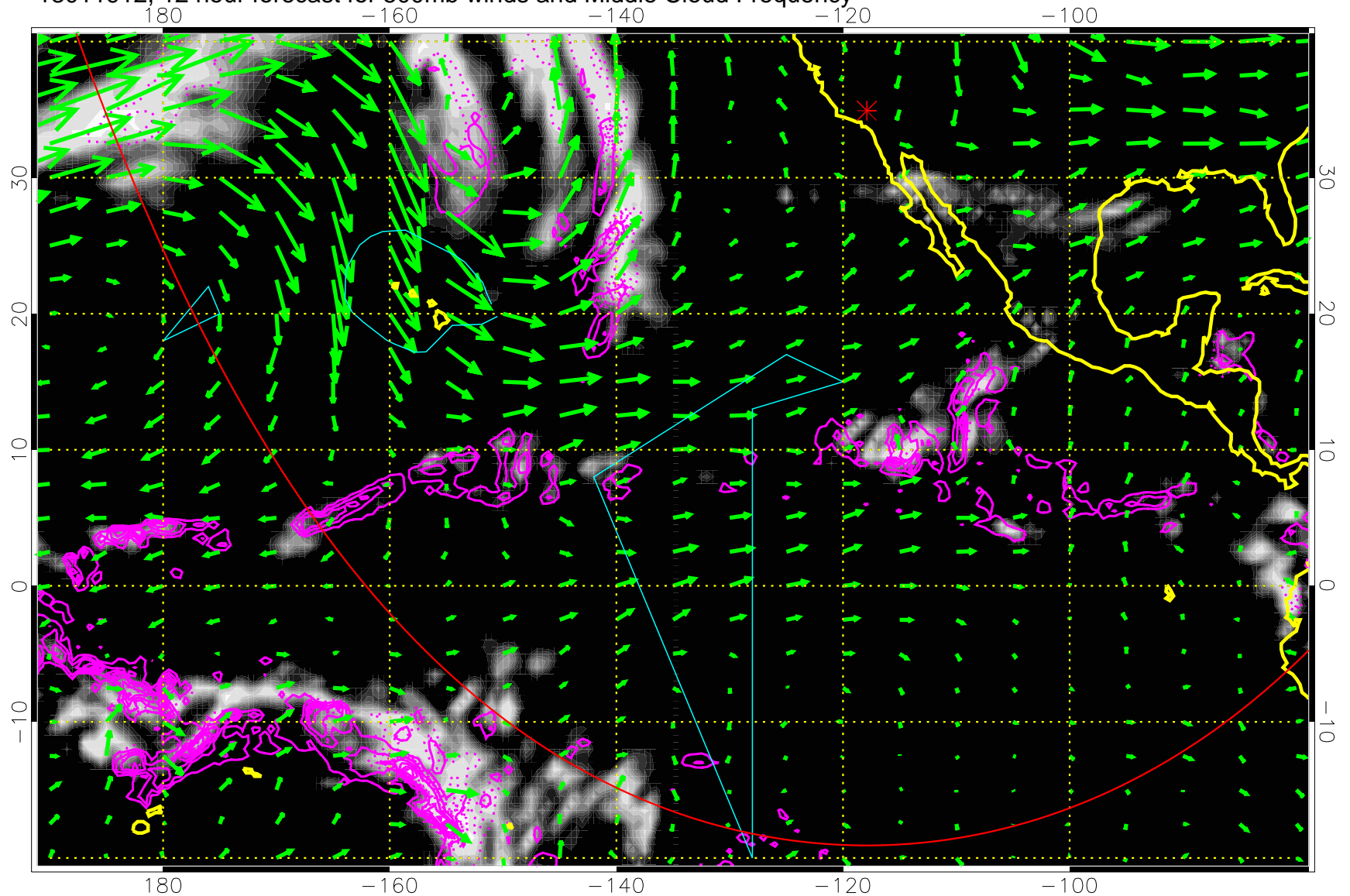


13011912, 12 hour forecast for 500mb winds and Middle Cloud Frequency

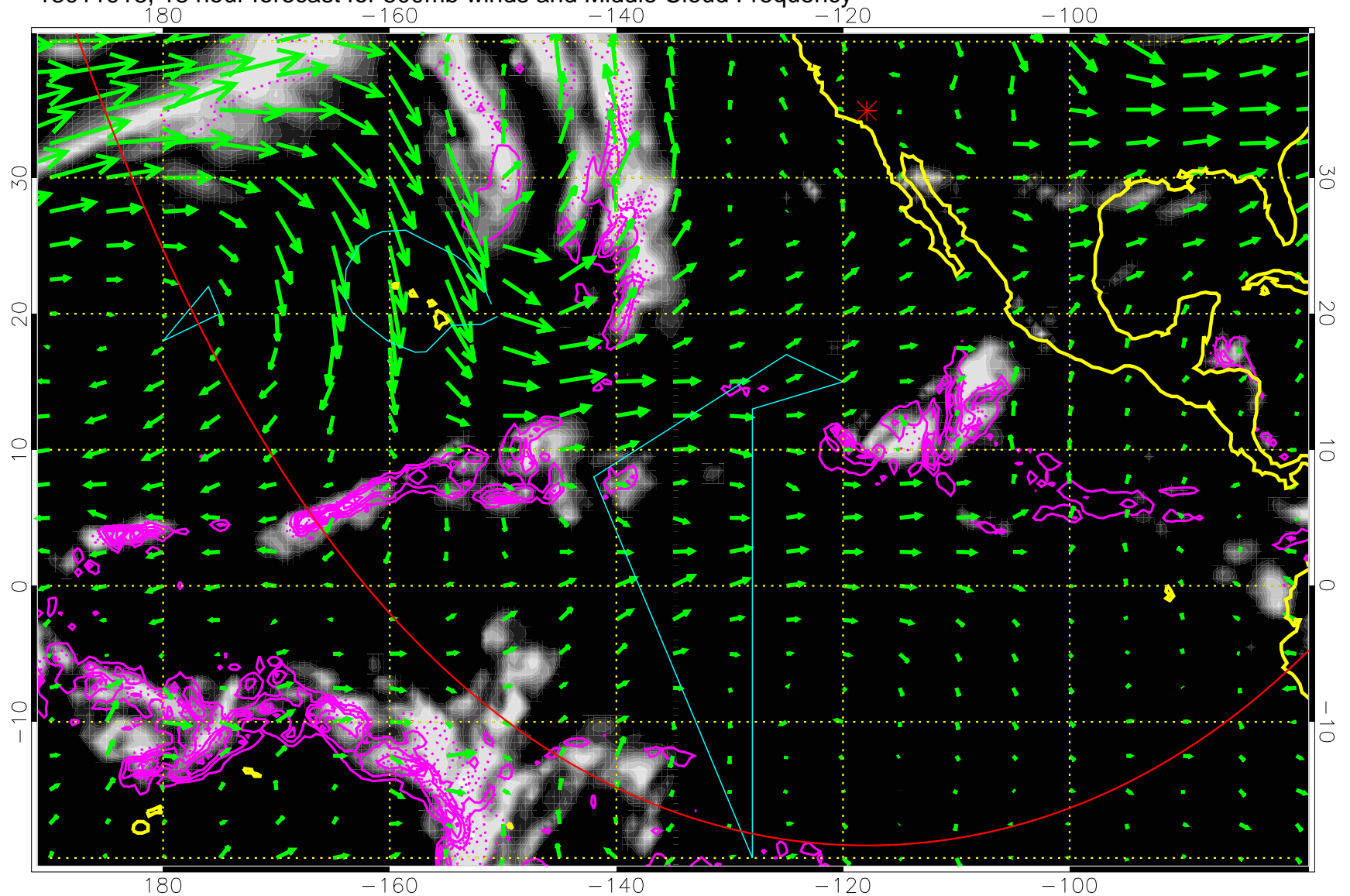


Precip (tot dot, conv sol) past 6 hrs 6 kg/m2 contours, min 4

→ 50 m/s

Range ring of 6000 km -- 19 hours GH round trip

13011918, 18 hour forecast for 500mb winds and Middle Cloud Frequency

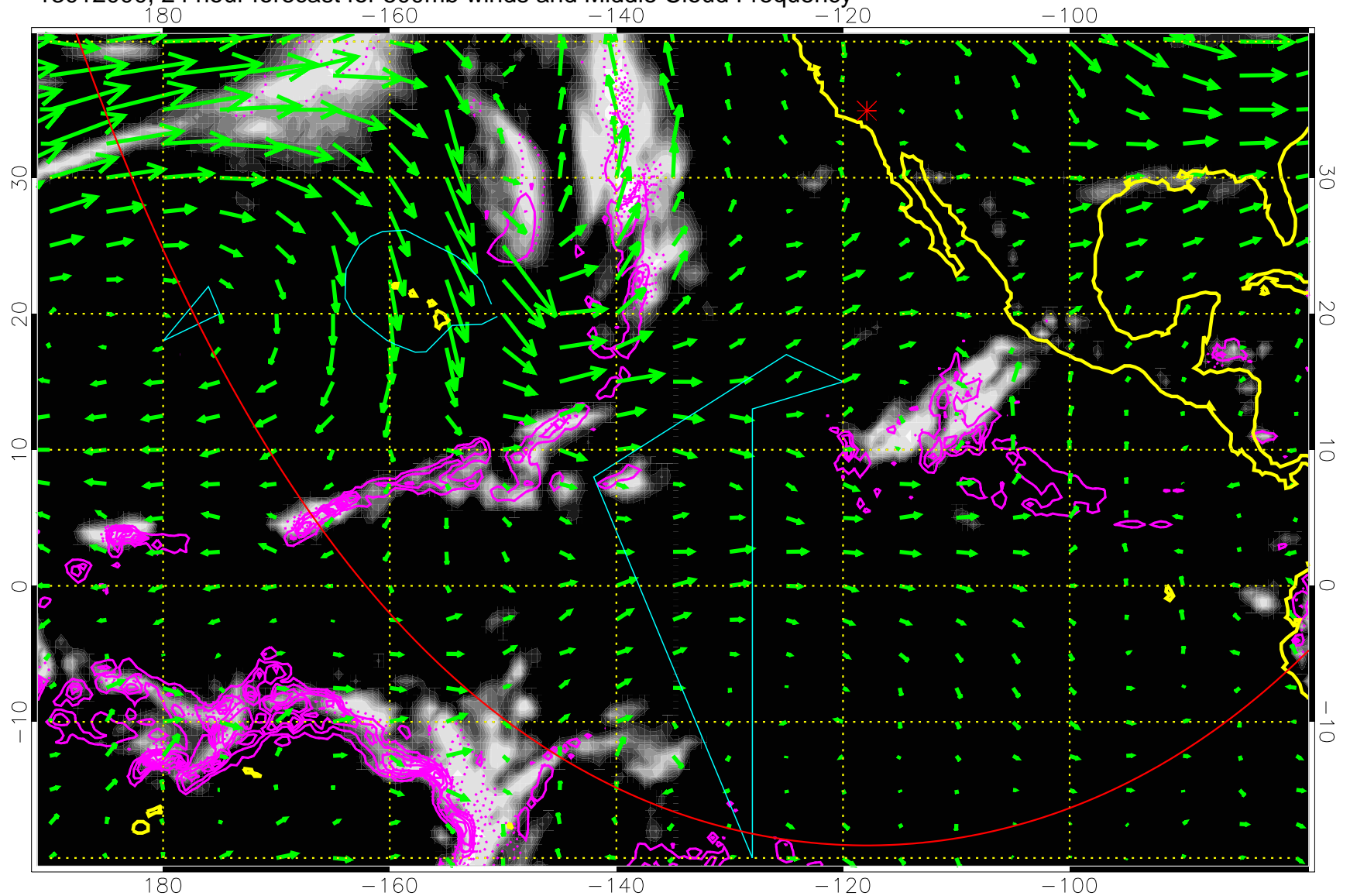


Precip (tot dot, conv sol) past 6 hrs 6 kg/m2 contours, min 4

→ 50 m/s

Range ring of 6000 km -- 19 hours GH round trip

13012000, 24 hour forecast for 500mb winds and Middle Cloud Frequency

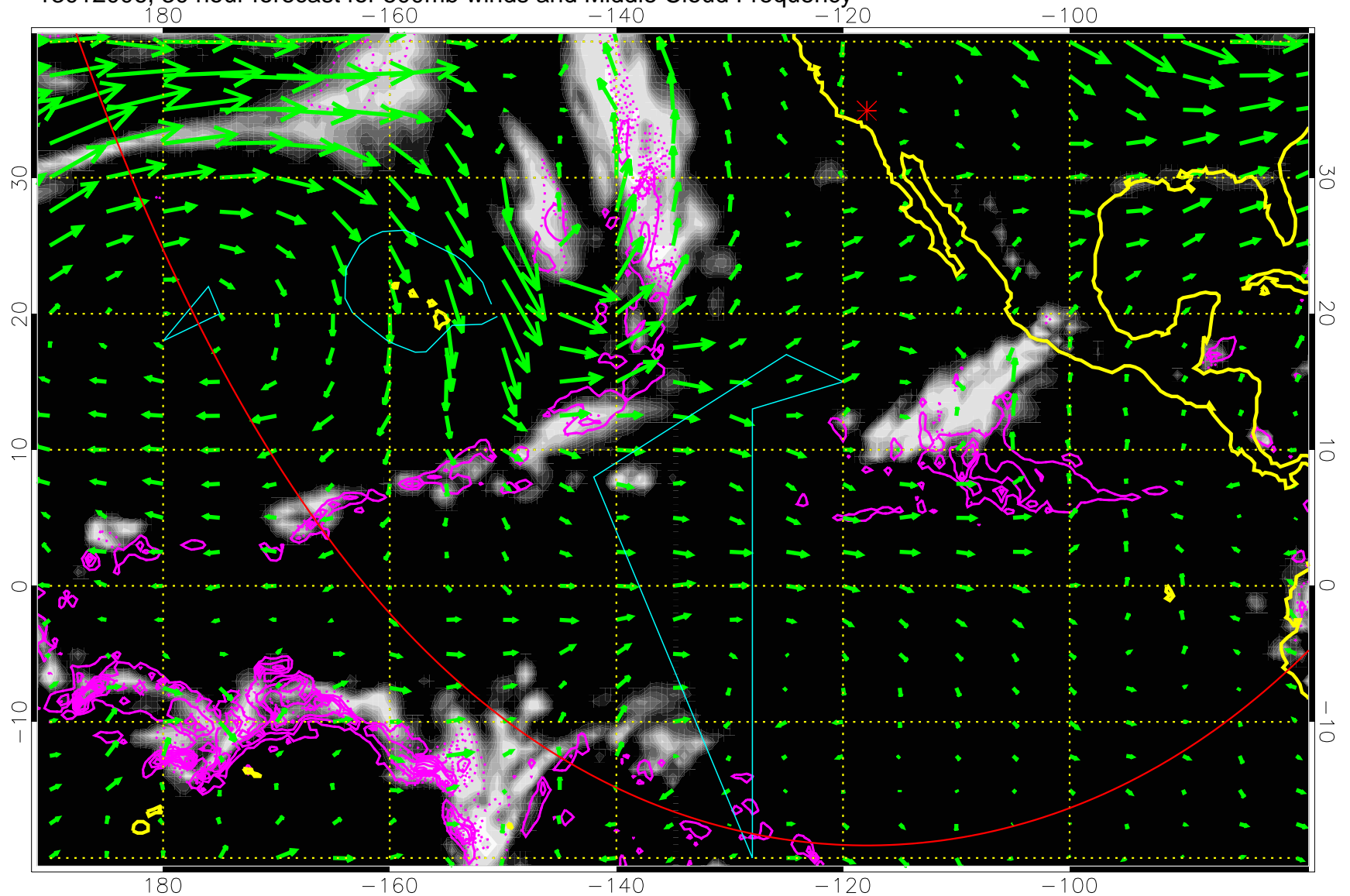


Precip (tot dot, conv sol) past 6 hrs 6 kg/m2 contours, min 4

→ 50 m/s

Range ring of 6000 km -- 19 hours GH round trip

13012006, 30 hour forecast for 500mb winds and Middle Cloud Frequency

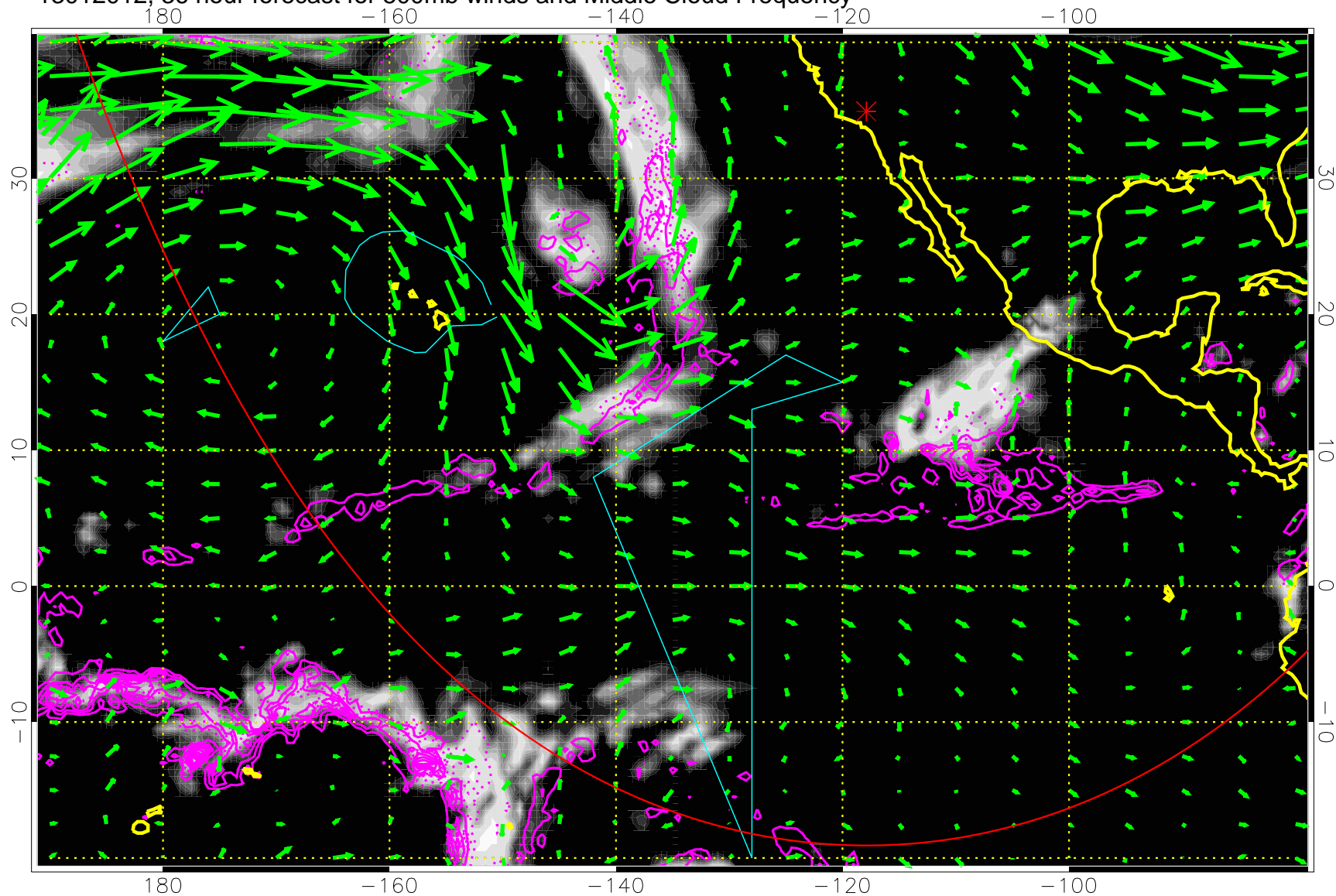


Precip (tot dot, conv sol) past 6 hrs 6 kg/m2 contours, min 4

→ 50 m/s

Range ring of 6000 km -- 19 hours GH round trip

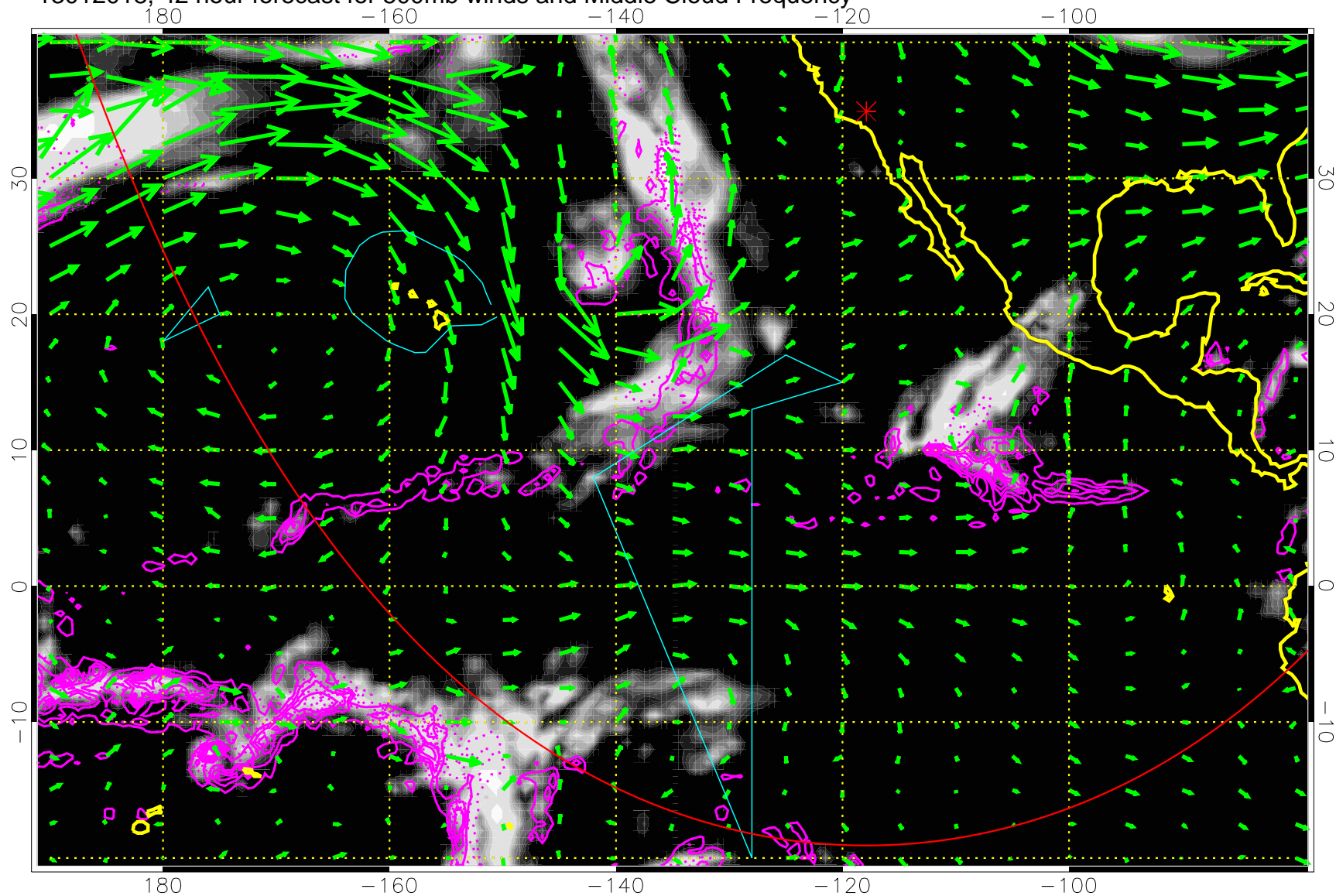
13012012, 36 hour forecast for 500mb winds and Middle Cloud Frequency



Precip (tot dot, conv sol) past 6 hrs 6 kg/m2 contours, min 4

→ 50 m/s
Range ring of 6000 km -- 19 hours GH round trip

13012018, 42 hour forecast for 500mb winds and Middle Cloud Frequency

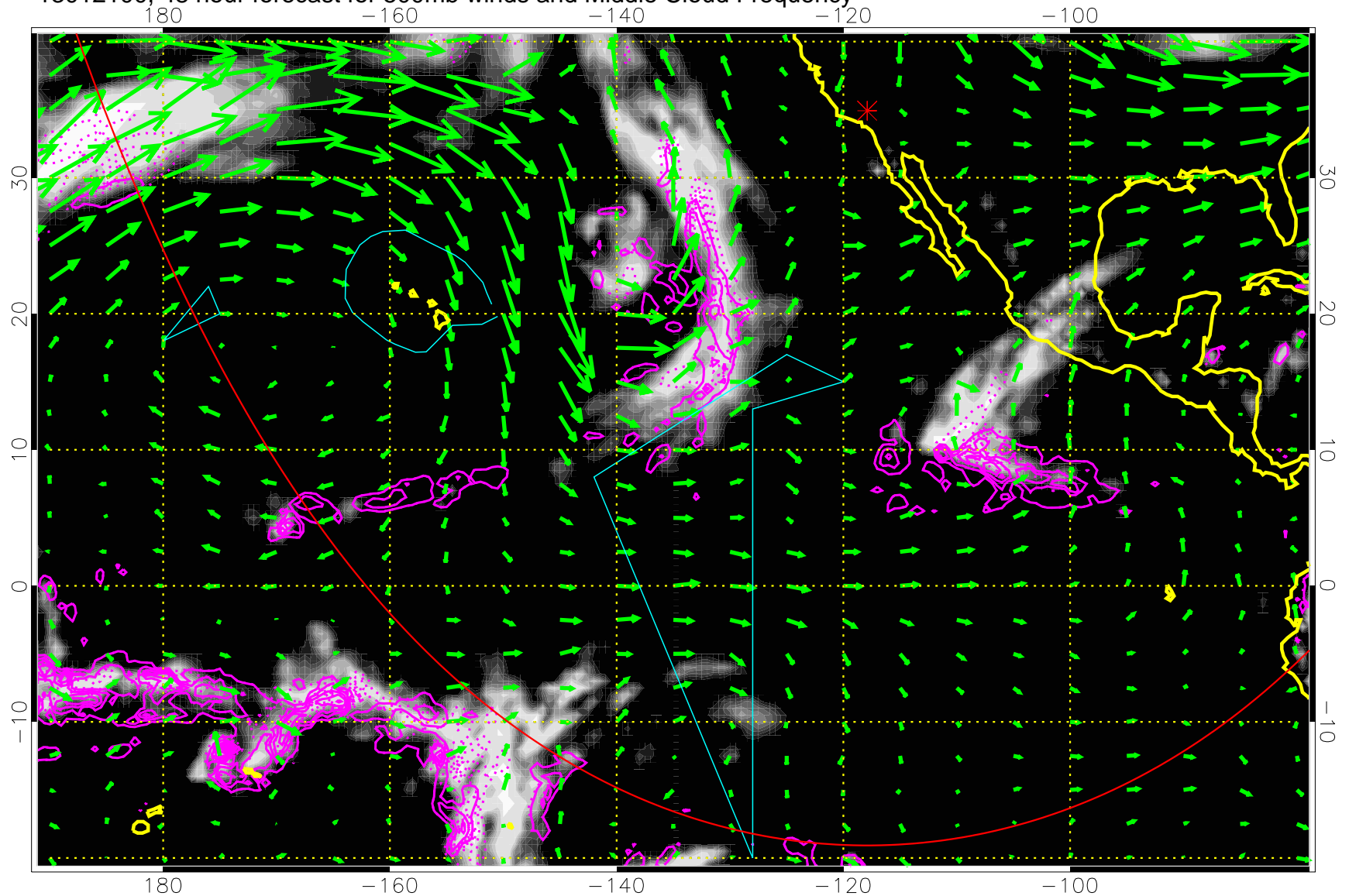


Precip (tot dot, conv sol) past 6 hrs 6 kg/m² contours, min 4

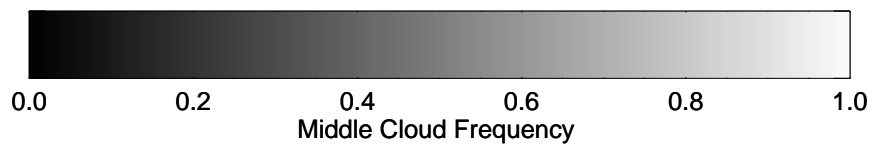
→ 50 m/s

Range ring of 6000 km -- 19 hours GH round trip

13012100, 48 hour forecast for 500mb winds and Middle Cloud Frequency



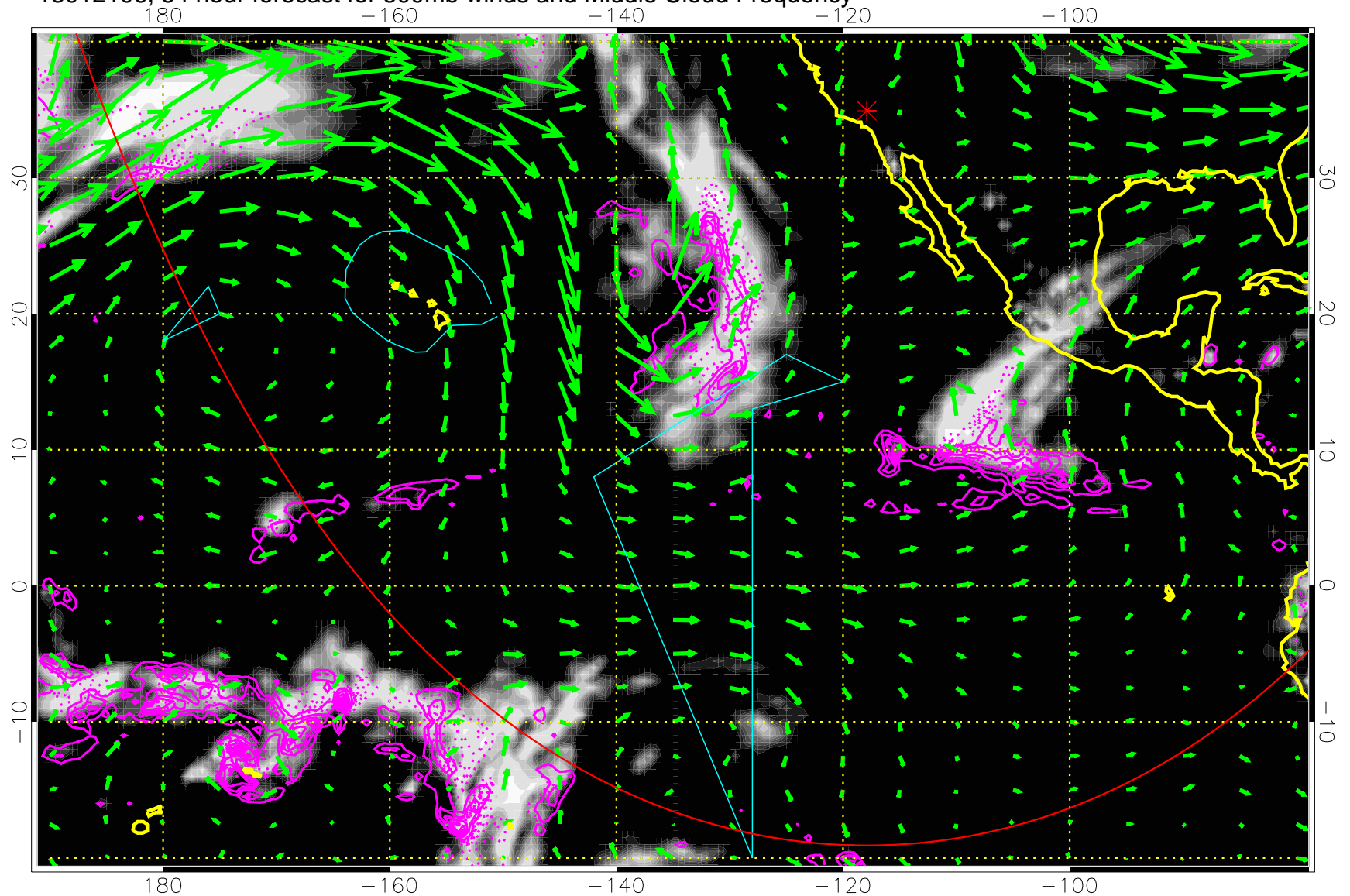
Precip (tot dot, conv sol) past 6 hrs 6 kg/m2 contours, min 4



→ 50 m/s

Range ring of 6000 km -- 19 hours GH round trip

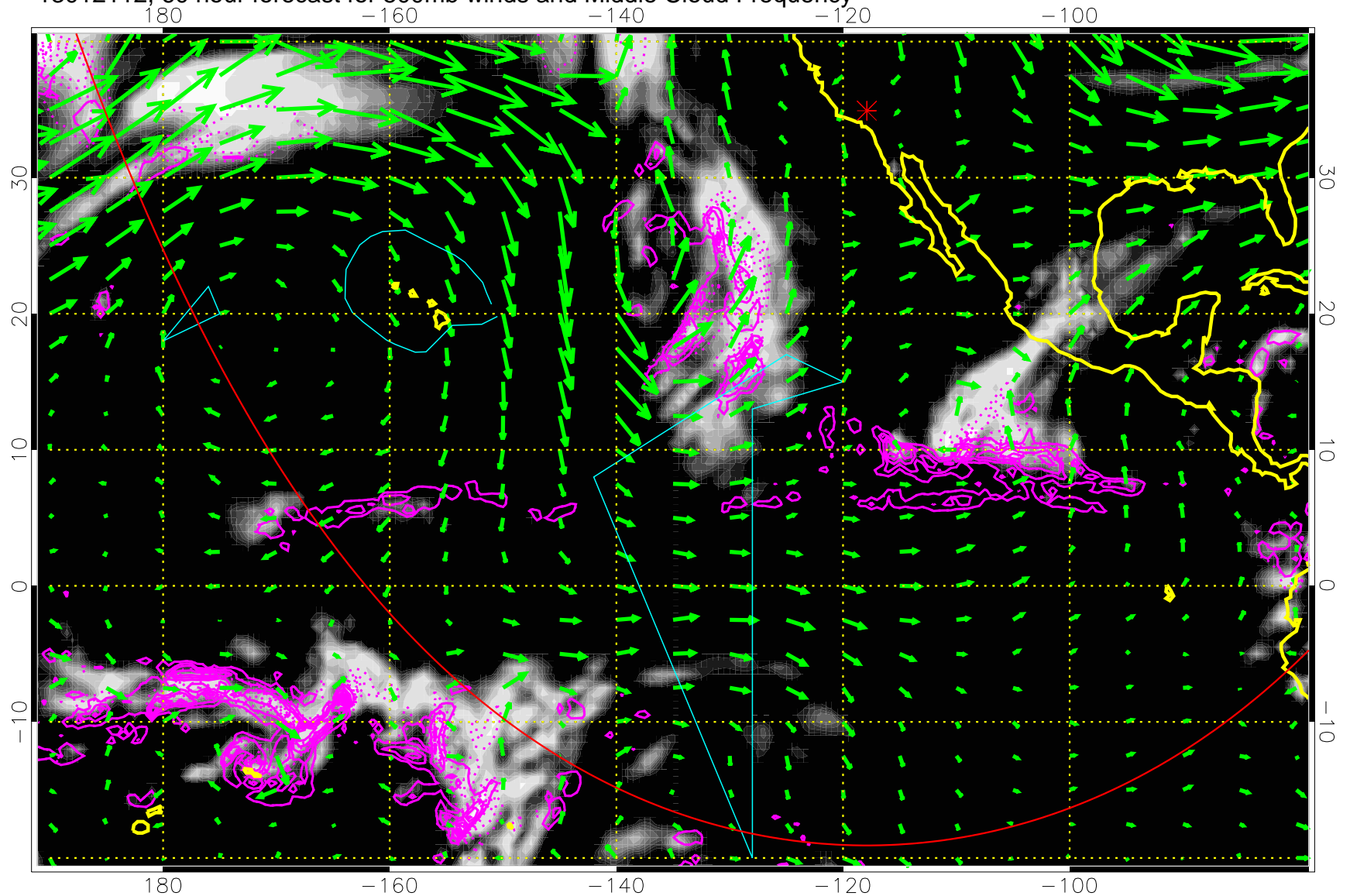
13012106, 54 hour forecast for 500mb winds and Middle Cloud Frequency



Precip (tot dot, conv sol) past 6 hrs 6 kg/m² contours, min 4

→ 50 m/s
Range ring of 6000 km -- 19 hours GH round trip

13012112, 60 hour forecast for 500mb winds and Middle Cloud Frequency

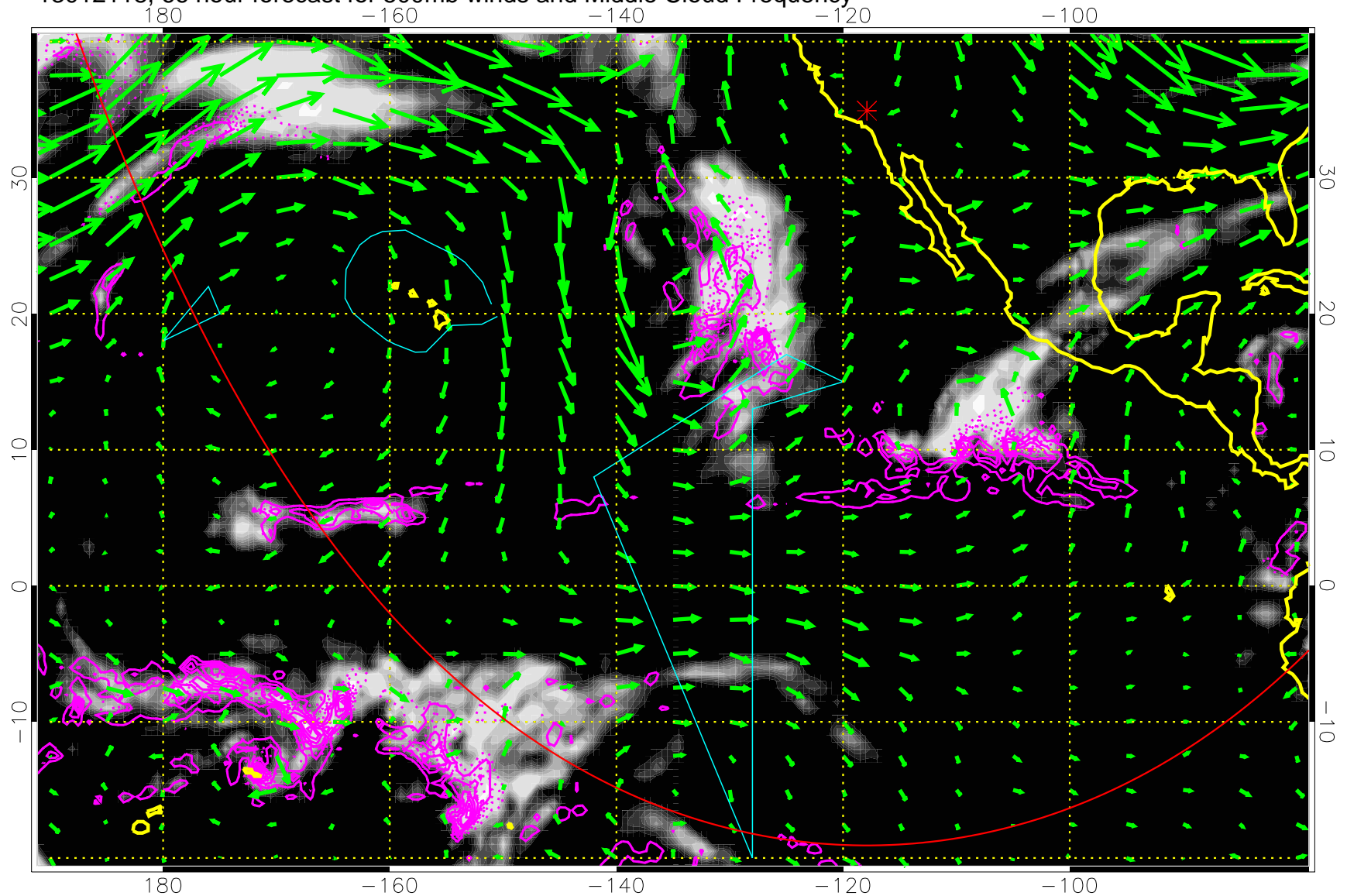


Precip (tot dot, conv sol) past 6 hrs 6 kg/m2 contours, min 4

→ 50 m/s

Range ring of 6000 km -- 19 hours GH round trip

13012118, 66 hour forecast for 500mb winds and Middle Cloud Frequency

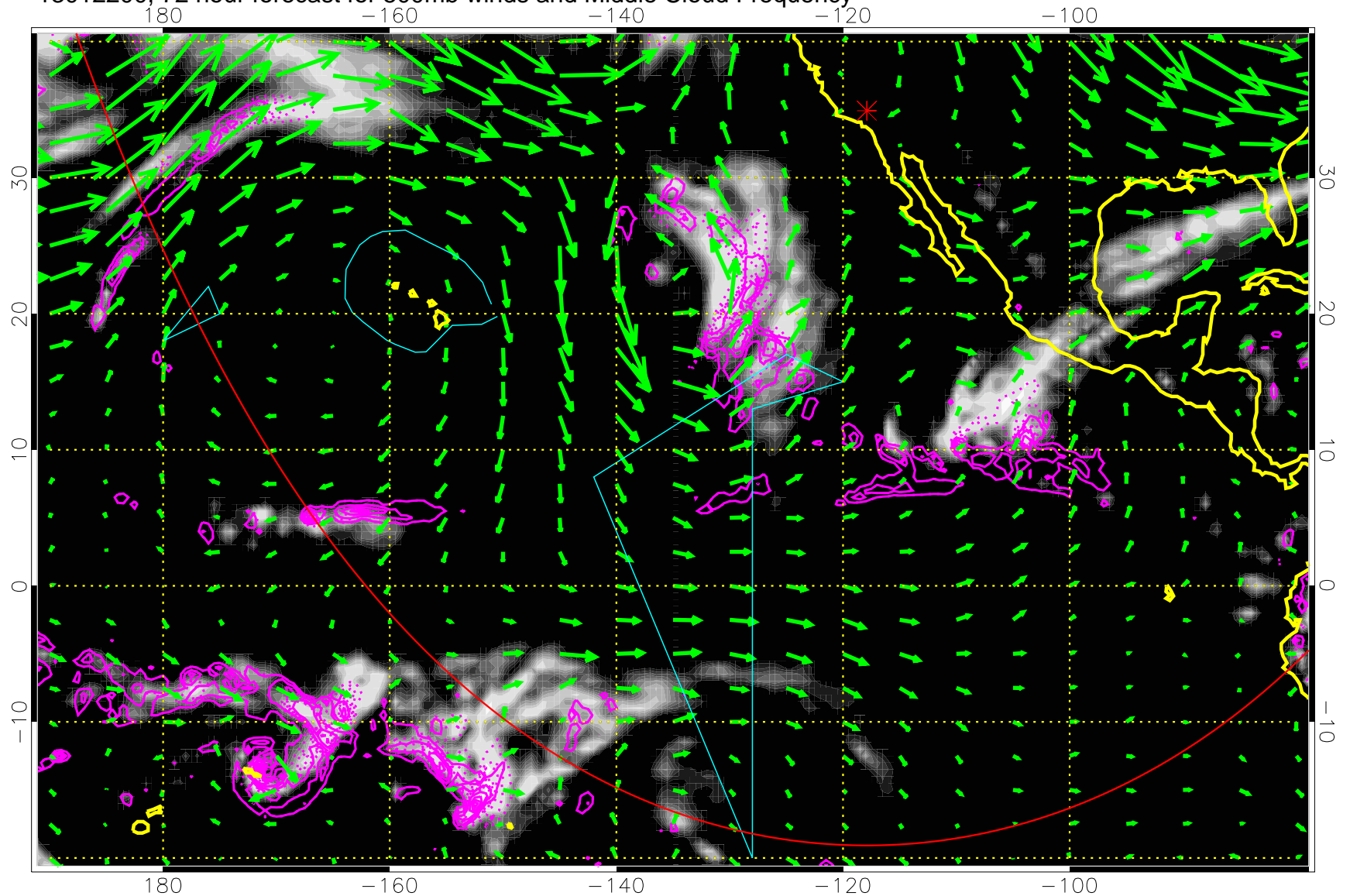


Precip (tot dot, conv sol) past 6 hrs 6 kg/m2 contours, min 4

→ 50 m/s

Range ring of 6000 km -- 19 hours GH round trip

13012200, 72 hour forecast for 500mb winds and Middle Cloud Frequency

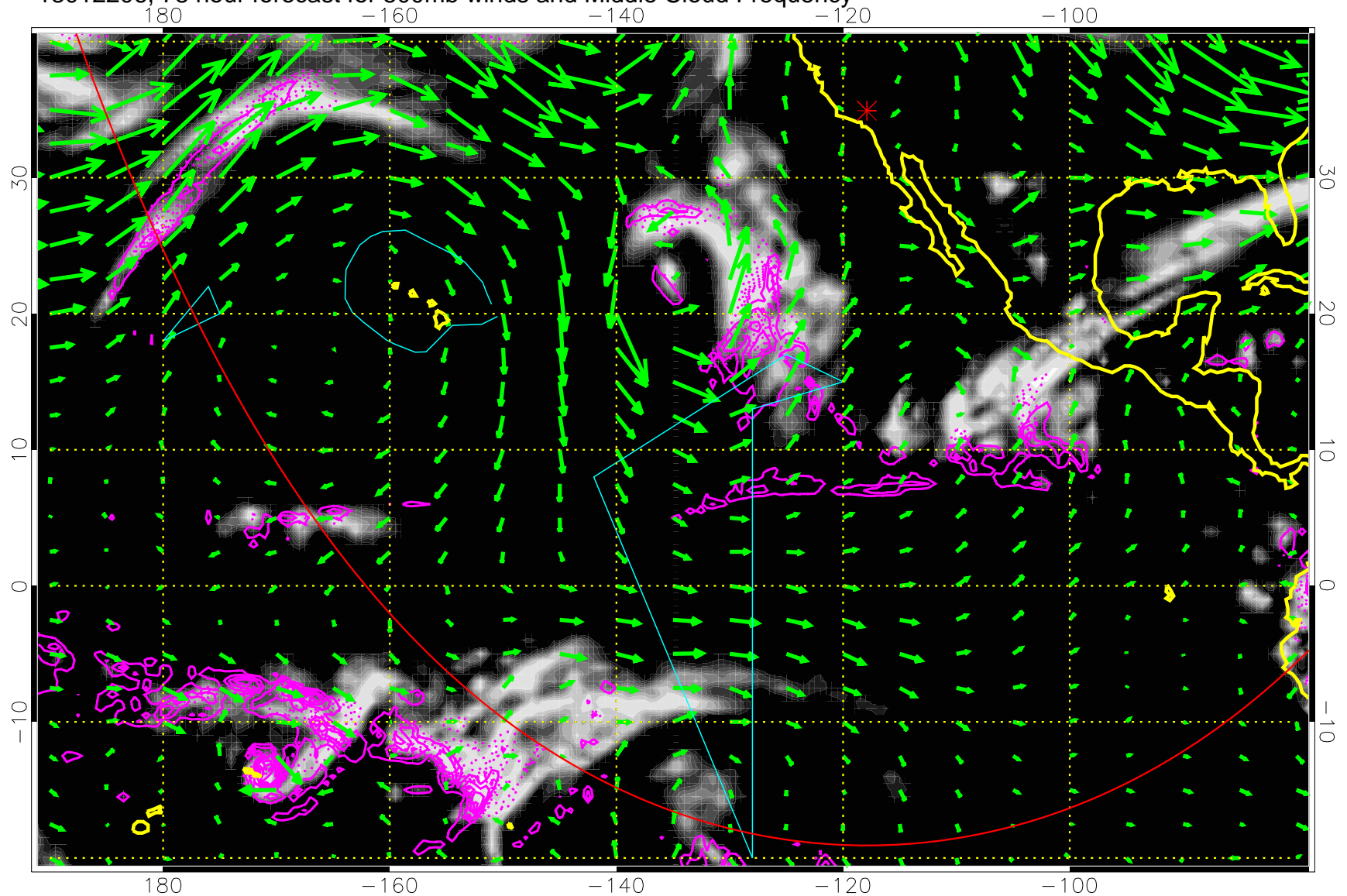


Precip (tot dot, conv sol) past 6 hrs 6 kg/m2 contours, min 4

→ 50 m/s

Range ring of 6000 km -- 19 hours GH round trip

13012206, 78 hour forecast for 500mb winds and Middle Cloud Frequency

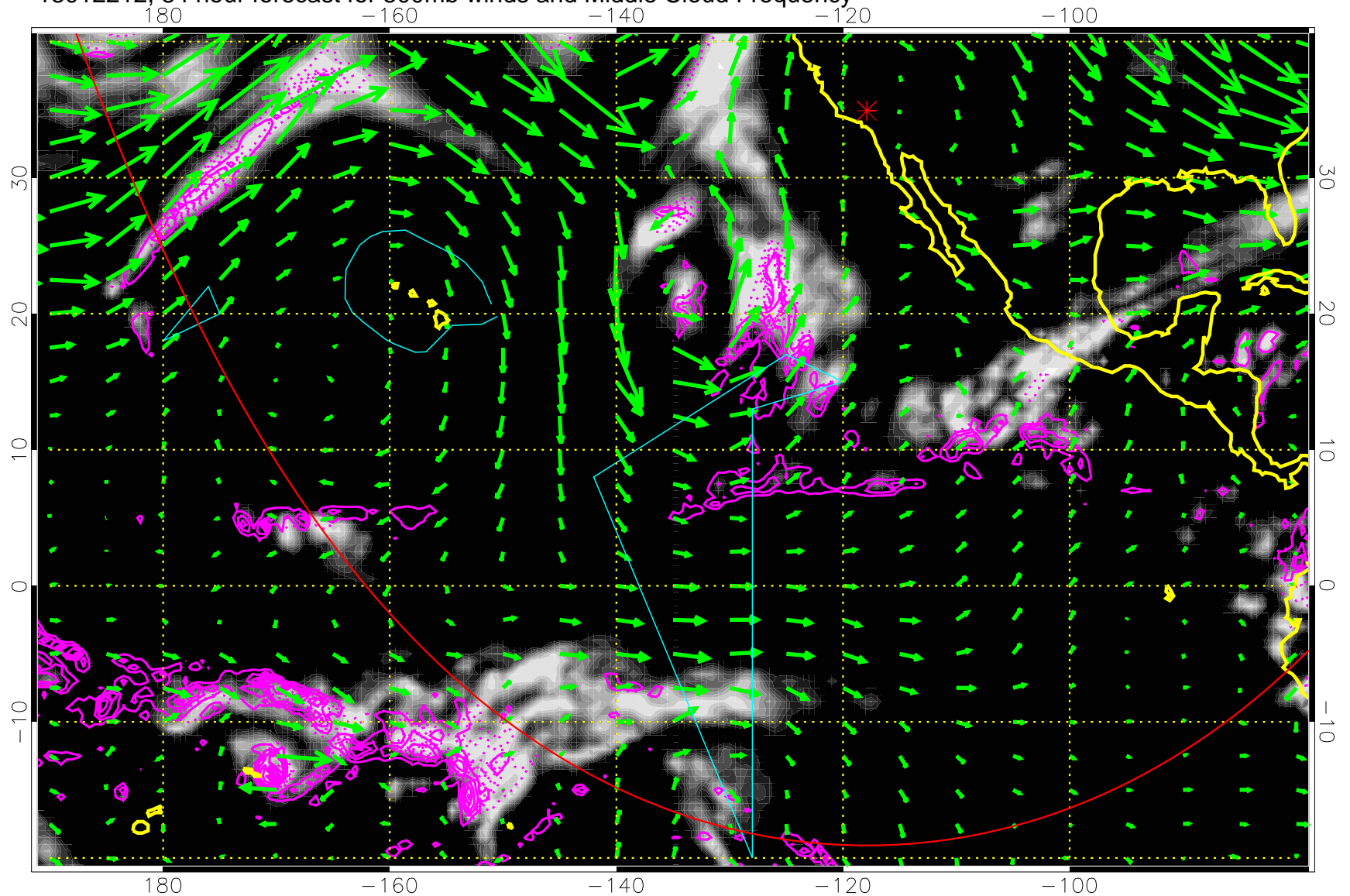


Precip (tot dot, conv sol) past 6 hrs 6 kg/m2 contours, min 4

→ 50 m/s

Range ring of 6000 km -- 19 hours GH round trip

13012212, 84 hour forecast for 500mb winds and Middle Cloud Frequency

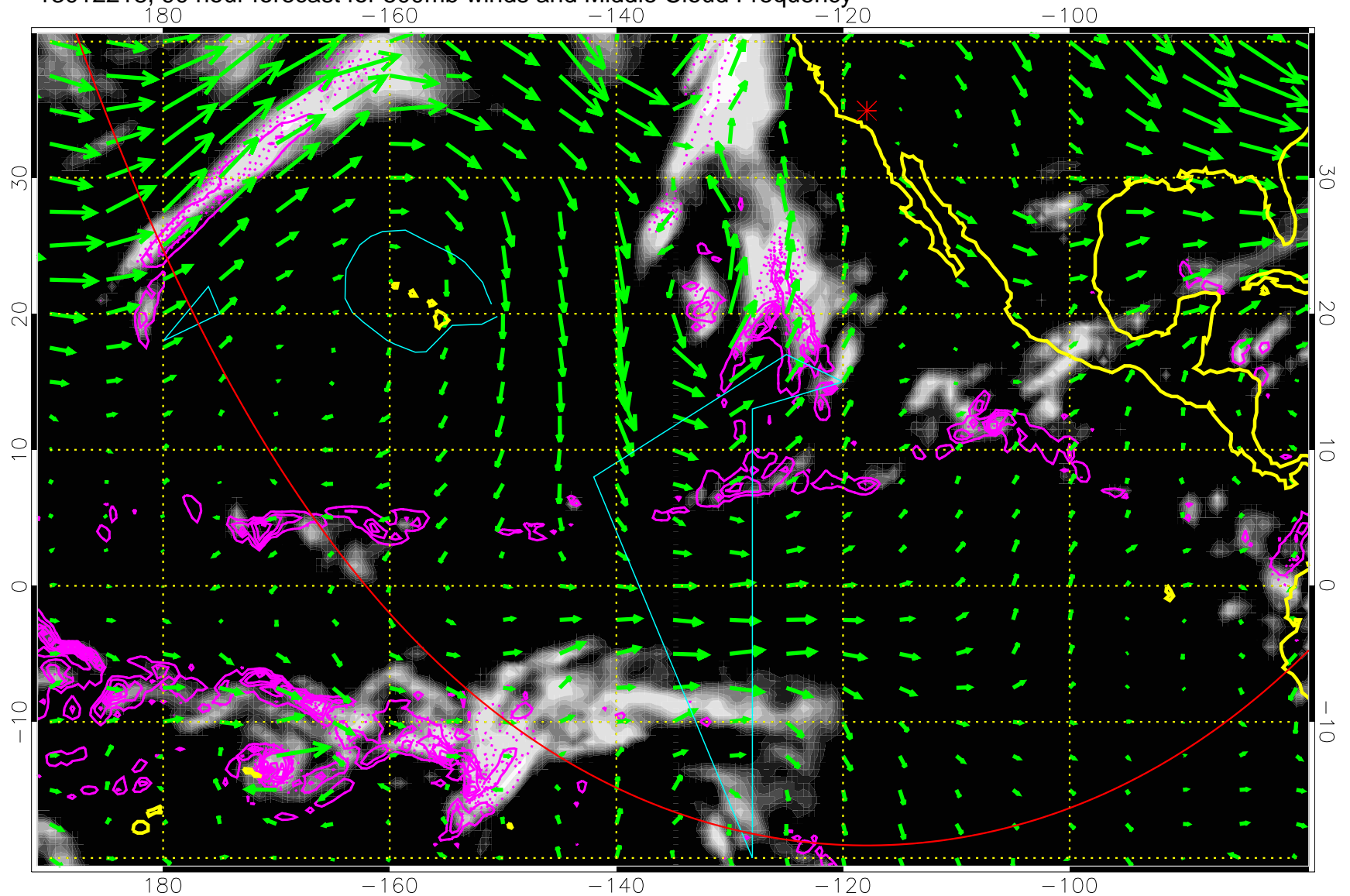


Precip (tot dot, conv sol) past 6 hrs 6 kg/m2 contours, min 4

→ 50 m/s

Range ring of 6000 km -- 19 hours GH round trip

13012218, 90 hour forecast for 500mb winds and Middle Cloud Frequency

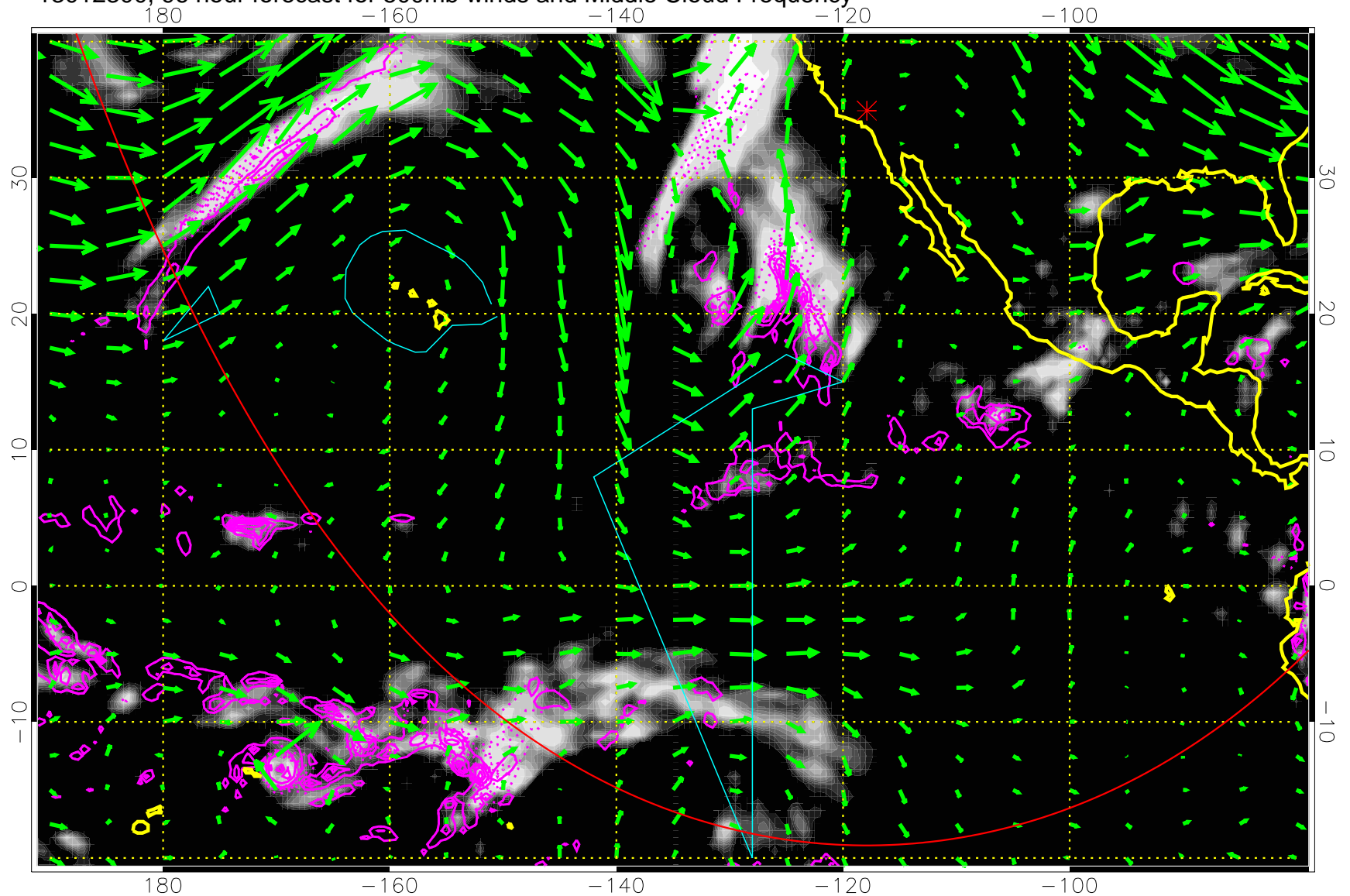


Precip (tot dot, conv sol) past 6 hrs 6 kg/m2 contours, min 4

→ 50 m/s

Range ring of 6000 km -- 19 hours GH round trip

13012300, 96 hour forecast for 500mb winds and Middle Cloud Frequency

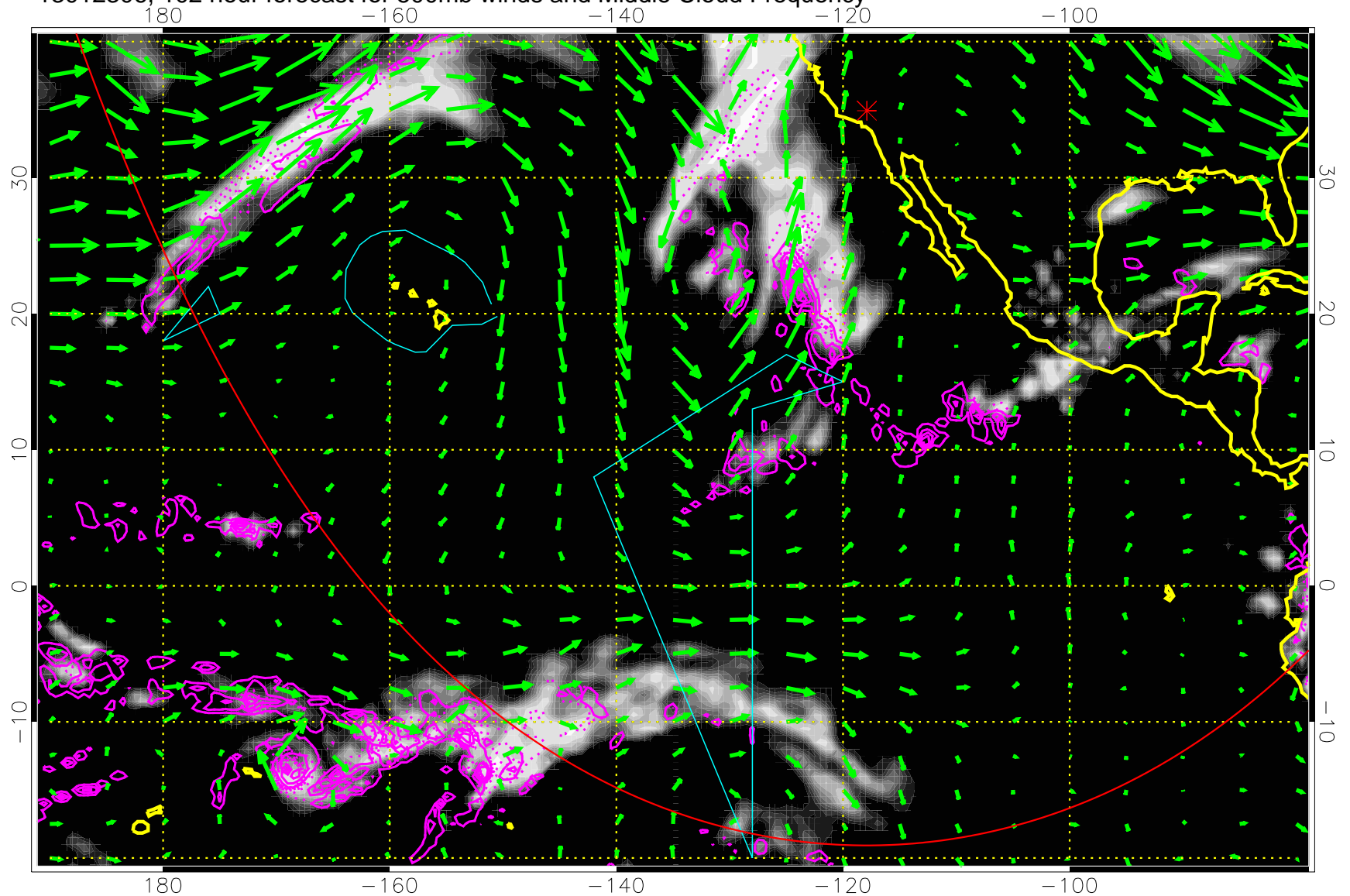


Precip (tot dot, conv sol) past 6 hrs 6 kg/m2 contours, min 4

→ 50 m/s

Range ring of 6000 km -- 19 hours GH round trip

13012306, 102 hour forecast for 500mb winds and Middle Cloud Frequency

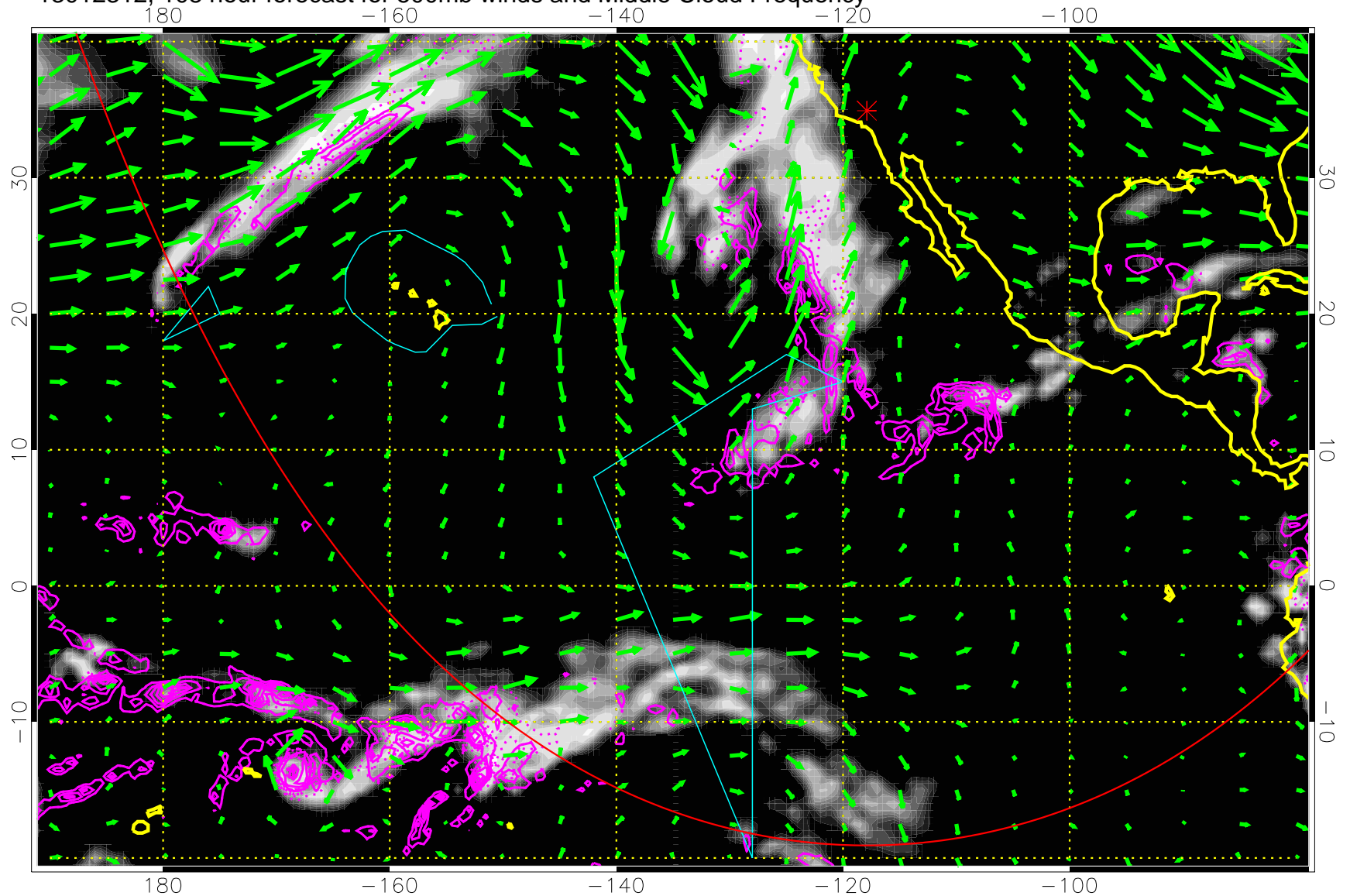


Precip (tot dot, conv sol) past 6 hrs 6 kg/m2 contours, min 4

→ 50 m/s

Range ring of 6000 km -- 19 hours GH round trip

13012312, 108 hour forecast for 500mb winds and Middle Cloud Frequency

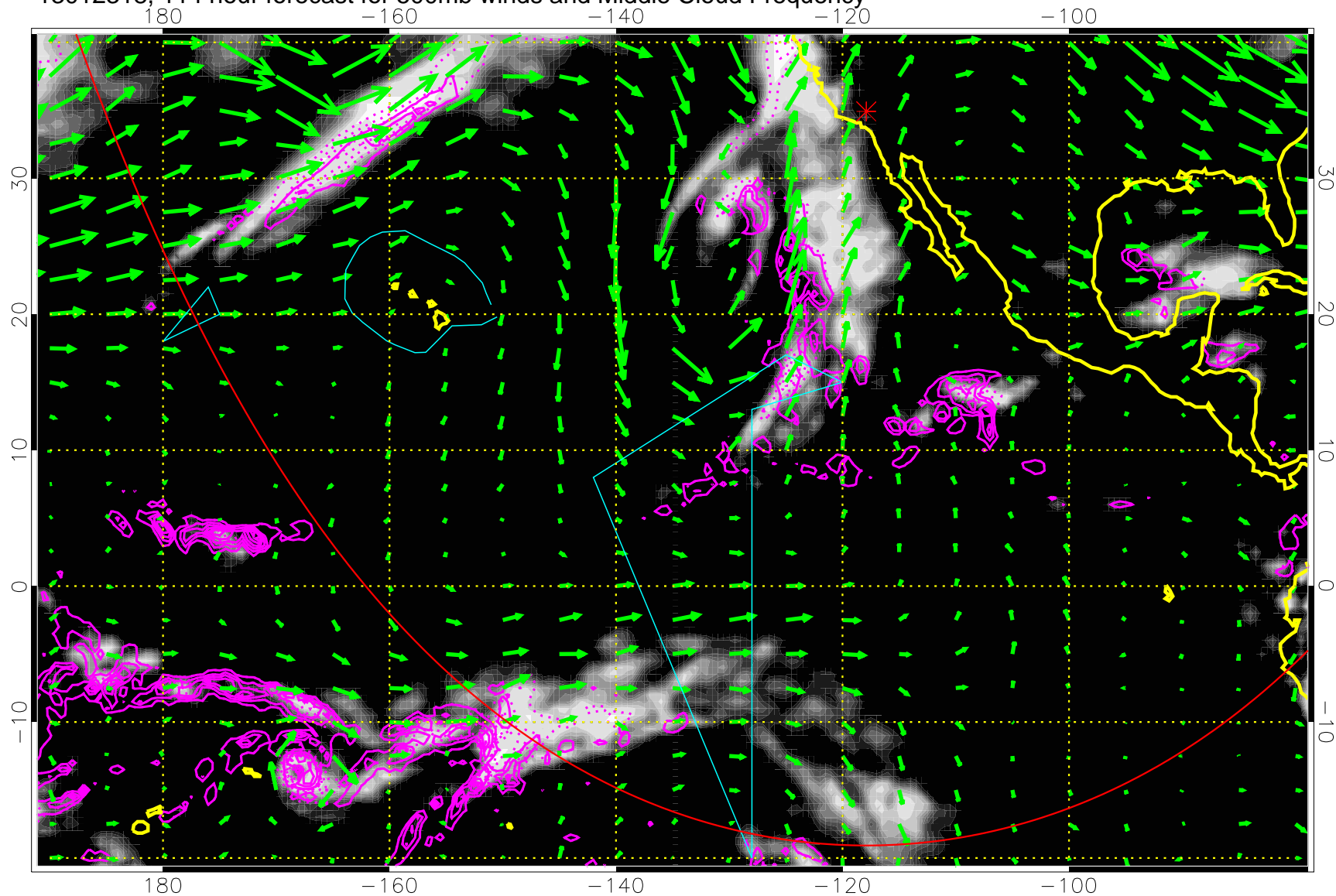


Precip (tot dot, conv sol) past 6 hrs 6 kg/m2 contours, min 4

→ 50 m/s

Range ring of 6000 km -- 19 hours GH round trip

13012318, 114 hour forecast for 500mb winds and Middle Cloud Frequency

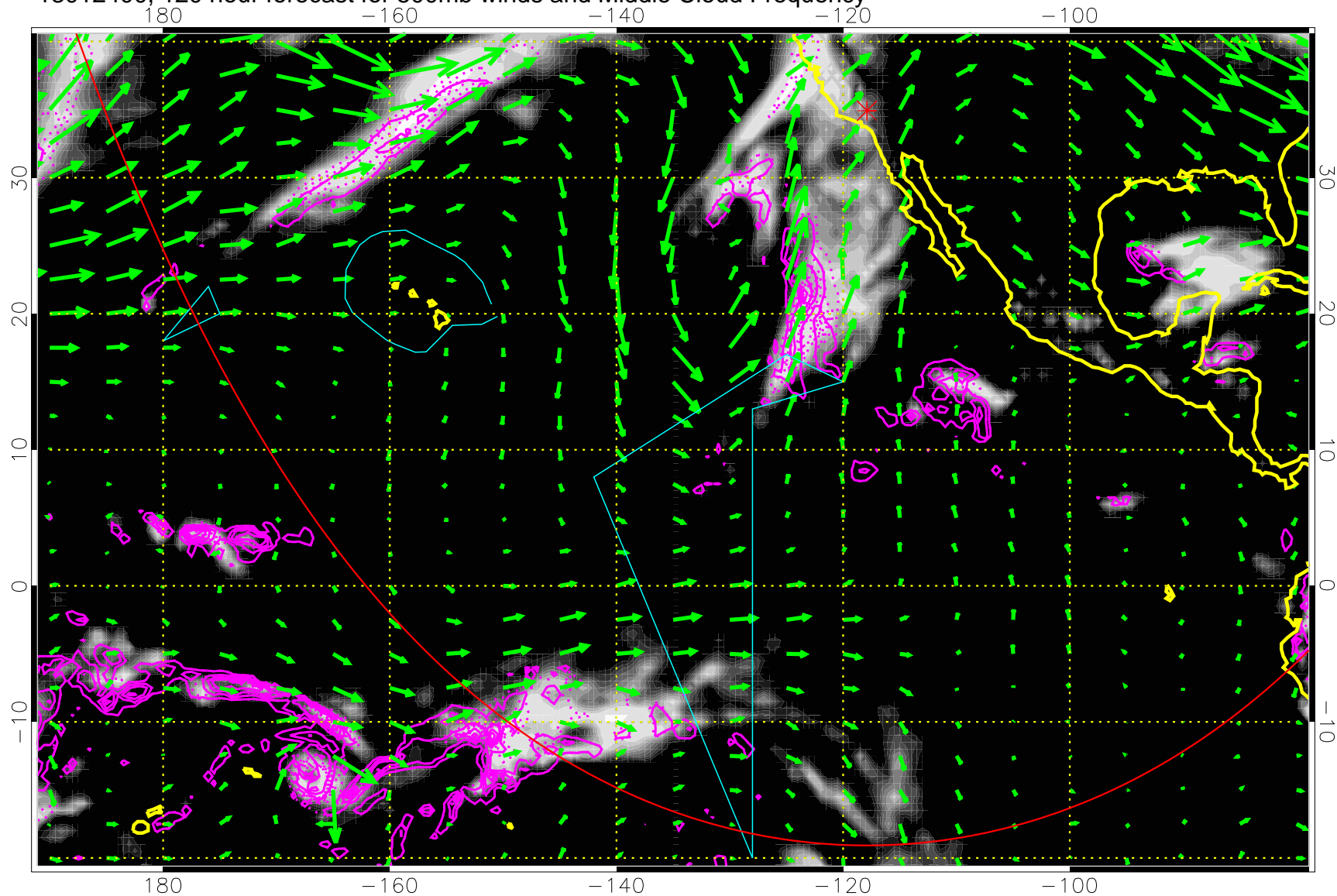


Precip (tot dot, conv sol) past 6 hrs 6 kg/m2 contours, min 4

→ 50 m/s

Range ring of 6000 km -- 19 hours GH round trip

13012400, 120 hour forecast for 500mb winds and Middle Cloud Frequency



0.0 0.2 0.4 0.6 0.8 1.0
Middle Cloud Frequency

Precip (tot dot, conv sol) past 6 hrs 6 kg/m2 contours, min 4

→ 50 m/s

Range ring of 6000 km -- 19 hours GH round trip