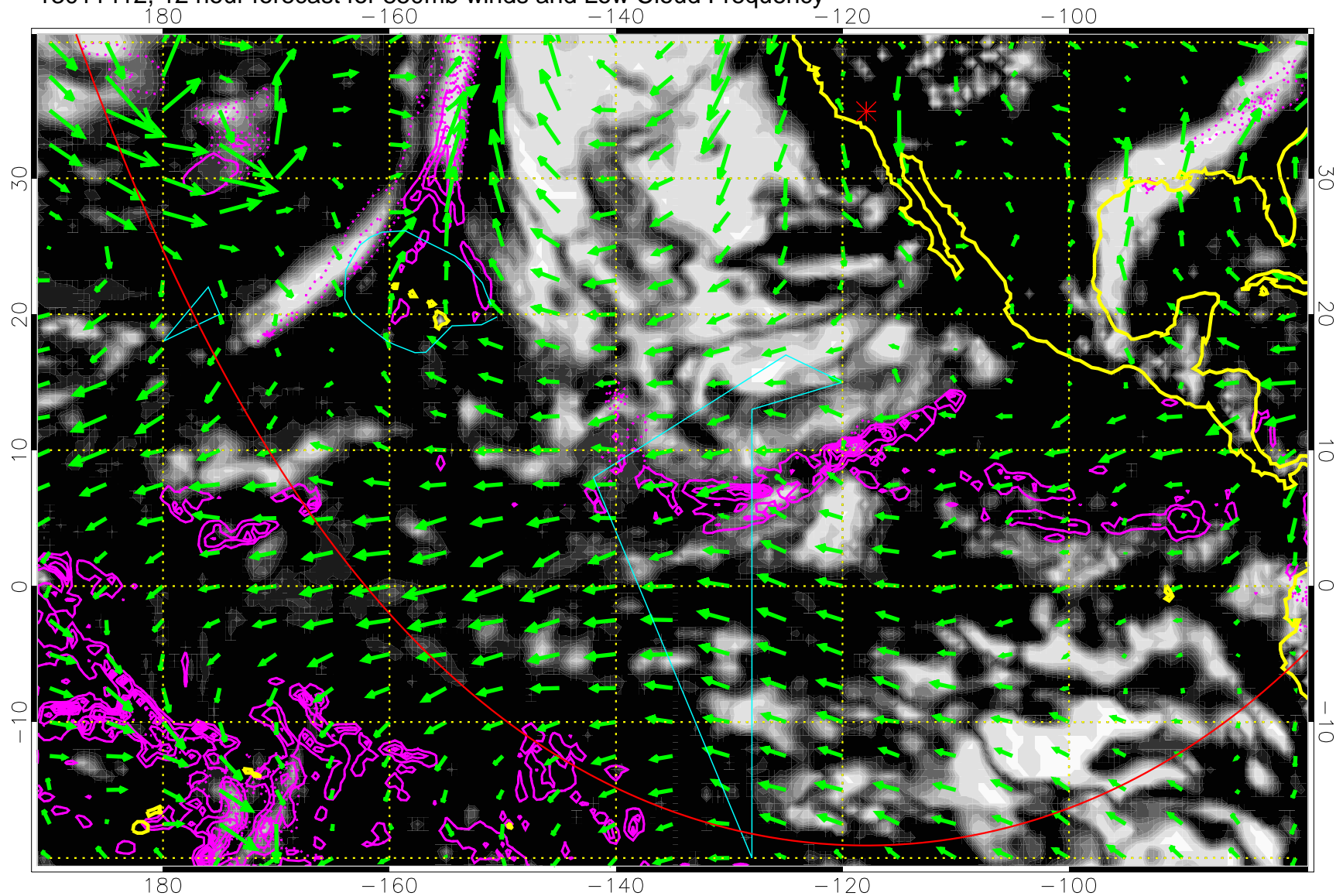


13011412, 12 hour forecast for 850mb winds and Low Cloud Frequency

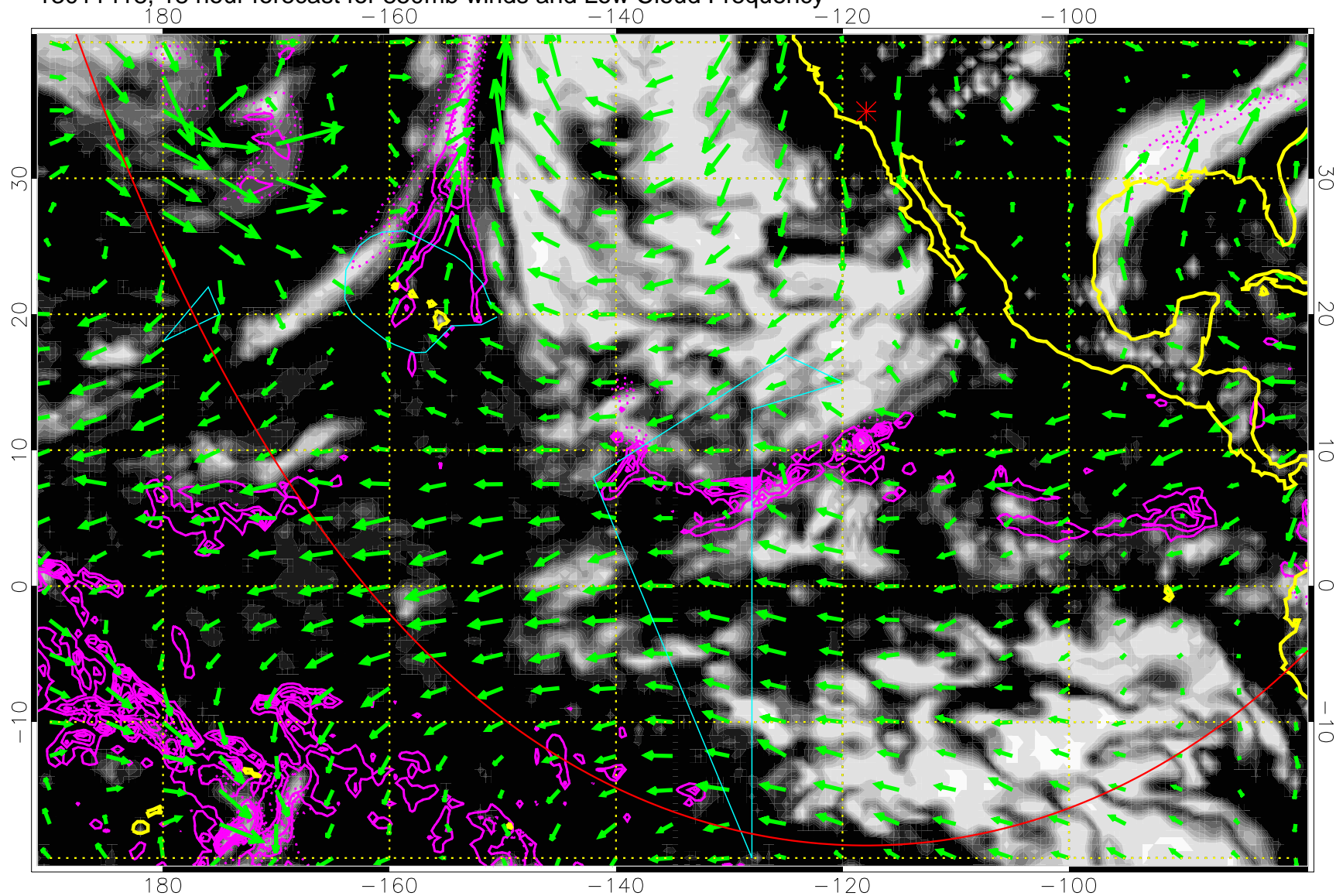


Precip (tot dot, conv sol) past 6 hrs 6 kg/m2 contours, min 4

→ 30 m/s

Range ring of 6000 km -- 19 hours GH round trip

13011418, 18 hour forecast for 850mb winds and Low Cloud Frequency



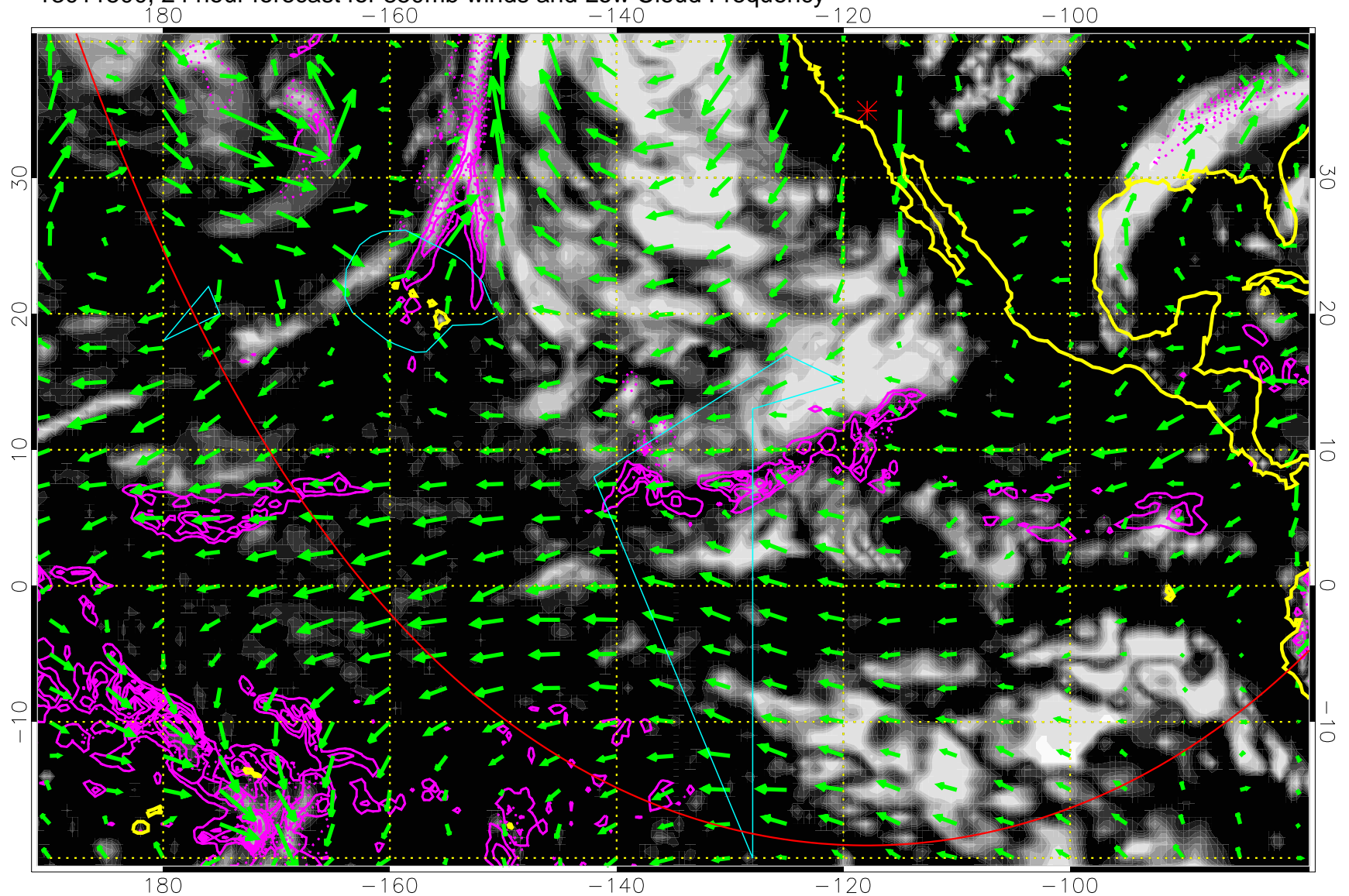
Precip (tot dot, conv sol) past 6 hrs 6 kg/m2 contours, min 4

→ 30 m/s

Range ring of 6000 km -- 19 hours GH round trip



13011500, 24 hour forecast for 850mb winds and Low Cloud Frequency

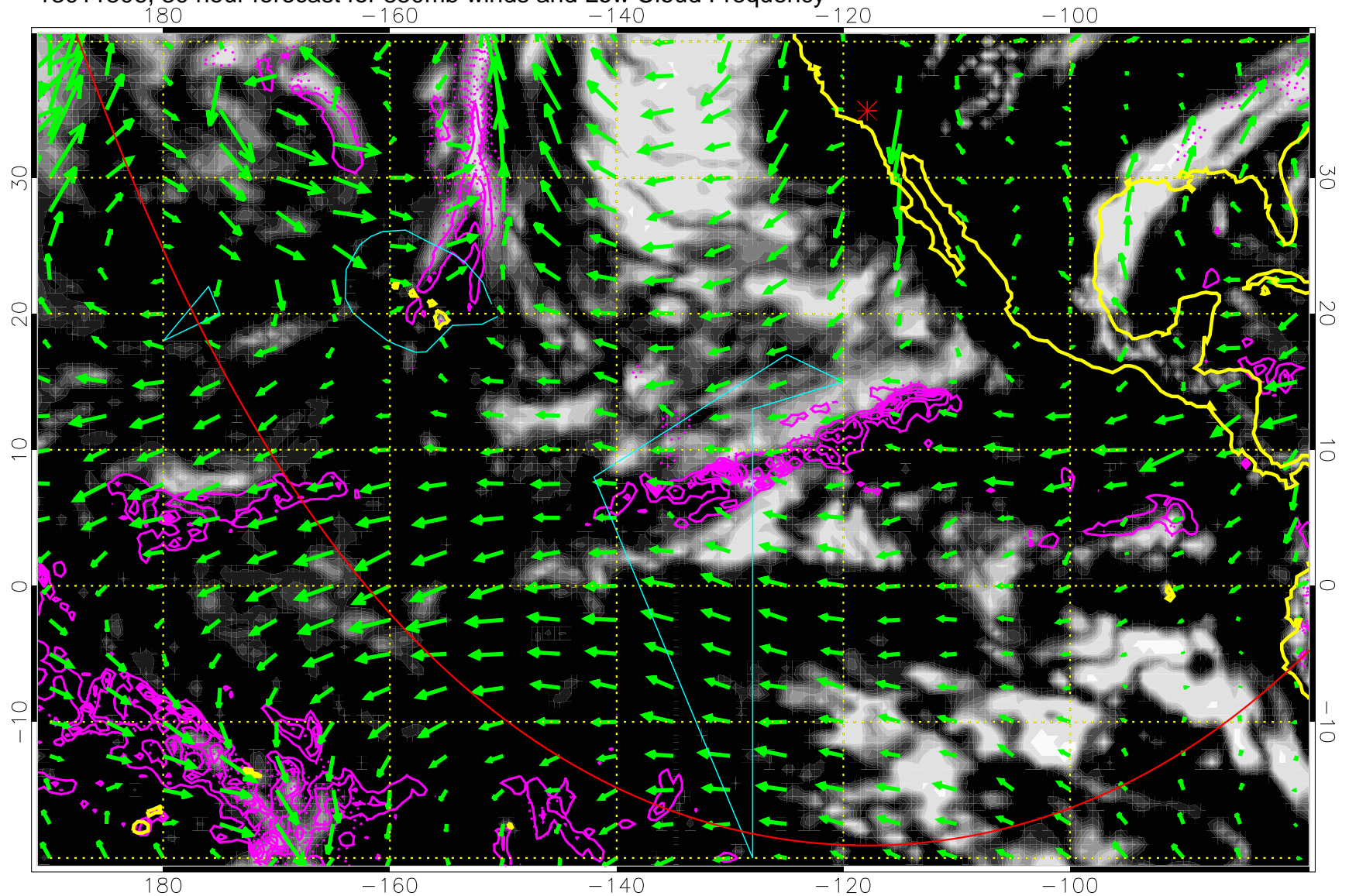


Precip (tot dot, conv sol) past 6 hrs 6 kg/m2 contours, min 4

→ 30 m/s

Range ring of 6000 km -- 19 hours GH round trip

13011506, 30 hour forecast for 850mb winds and Low Cloud Frequency



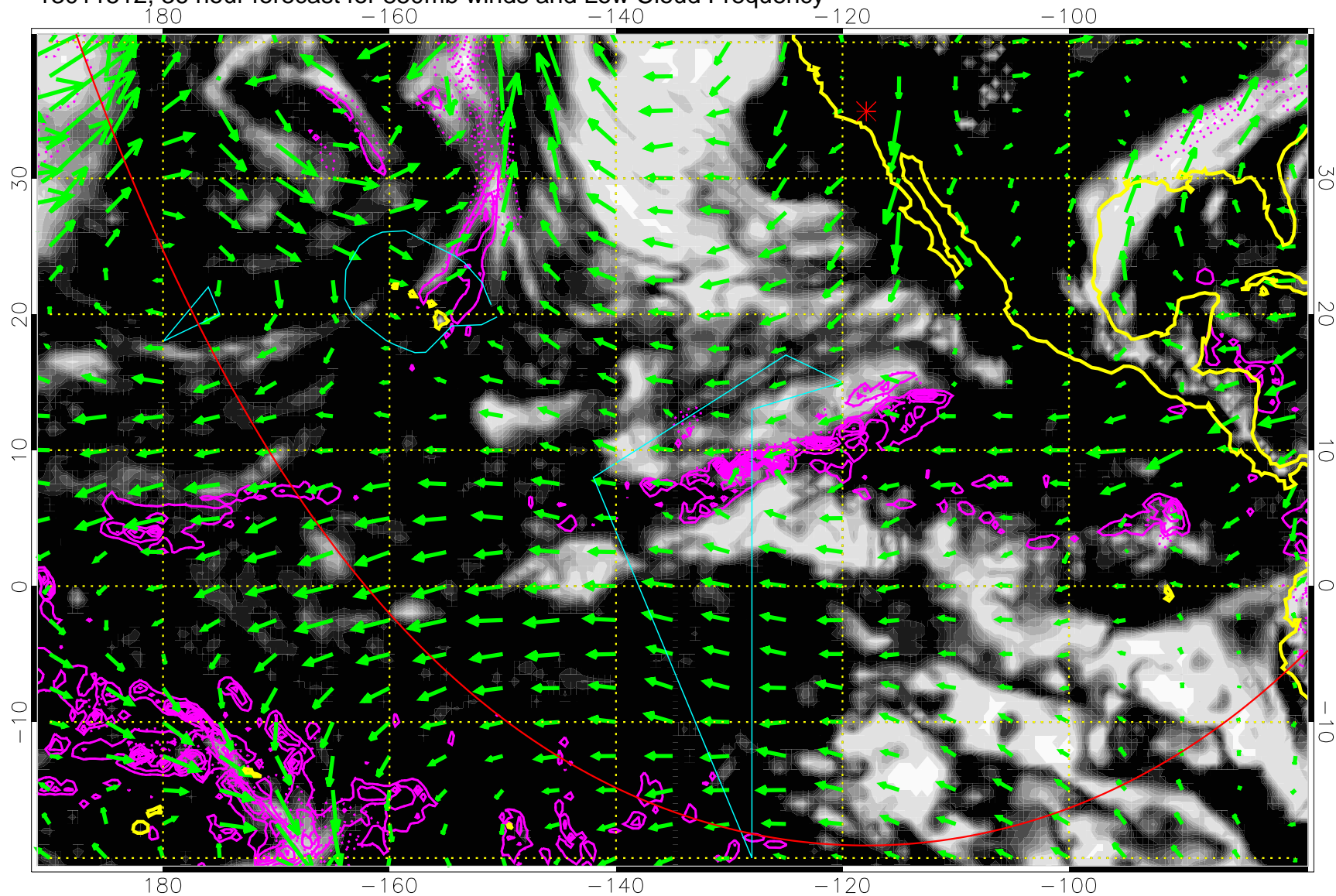
Precip (tot dot, conv sol) past 6 hrs 6 kg/m2 contours, min 4

→ 30 m/s

Range ring of 6000 km -- 19 hours GH round trip



13011512, 36 hour forecast for 850mb winds and Low Cloud Frequency

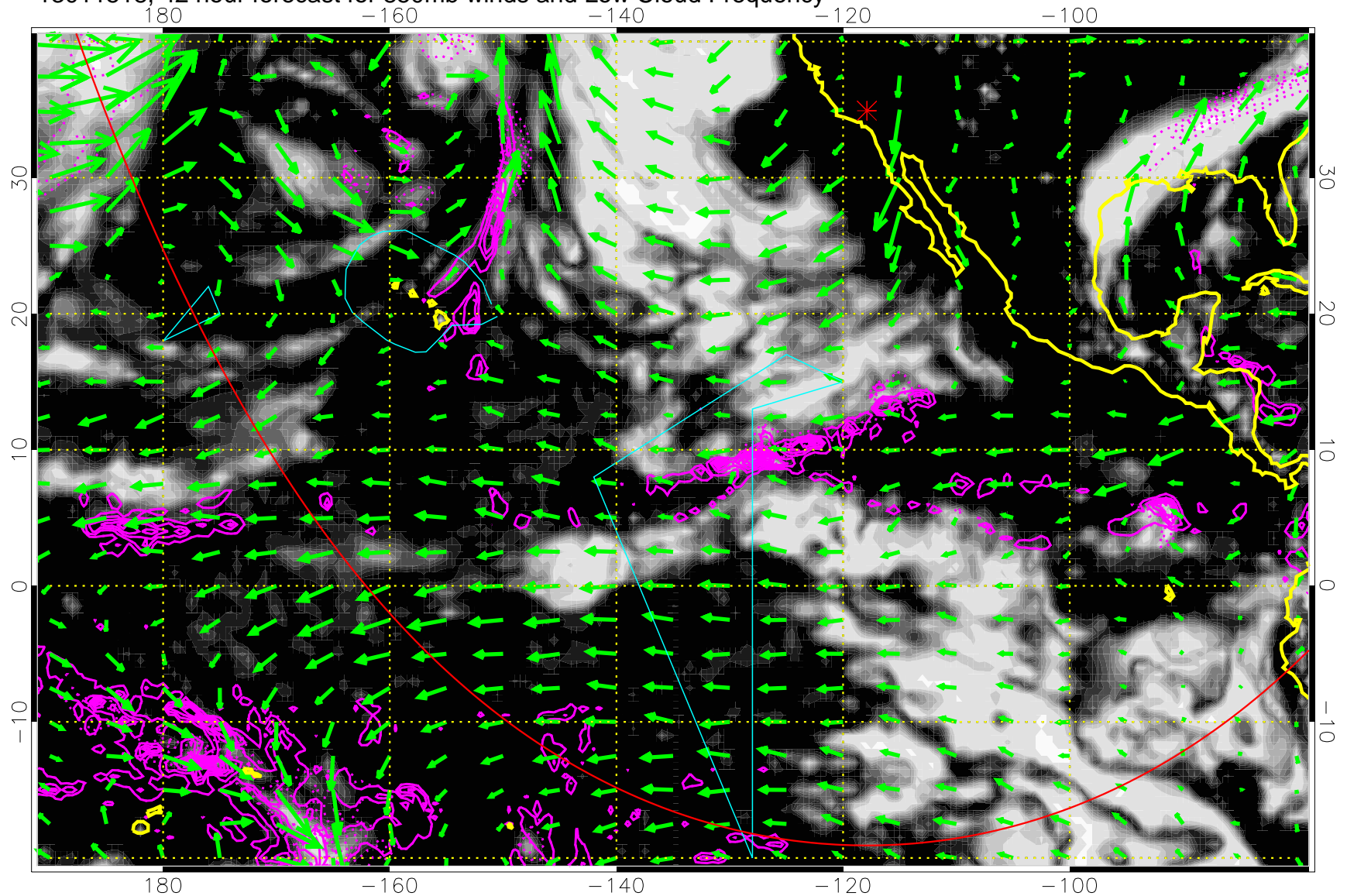


Precip (tot dot, conv sol) past 6 hrs 6 kg/m2 contours, min 4

→ 30 m/s

Range ring of 6000 km -- 19 hours GH round trip

13011518, 42 hour forecast for 850mb winds and Low Cloud Frequency



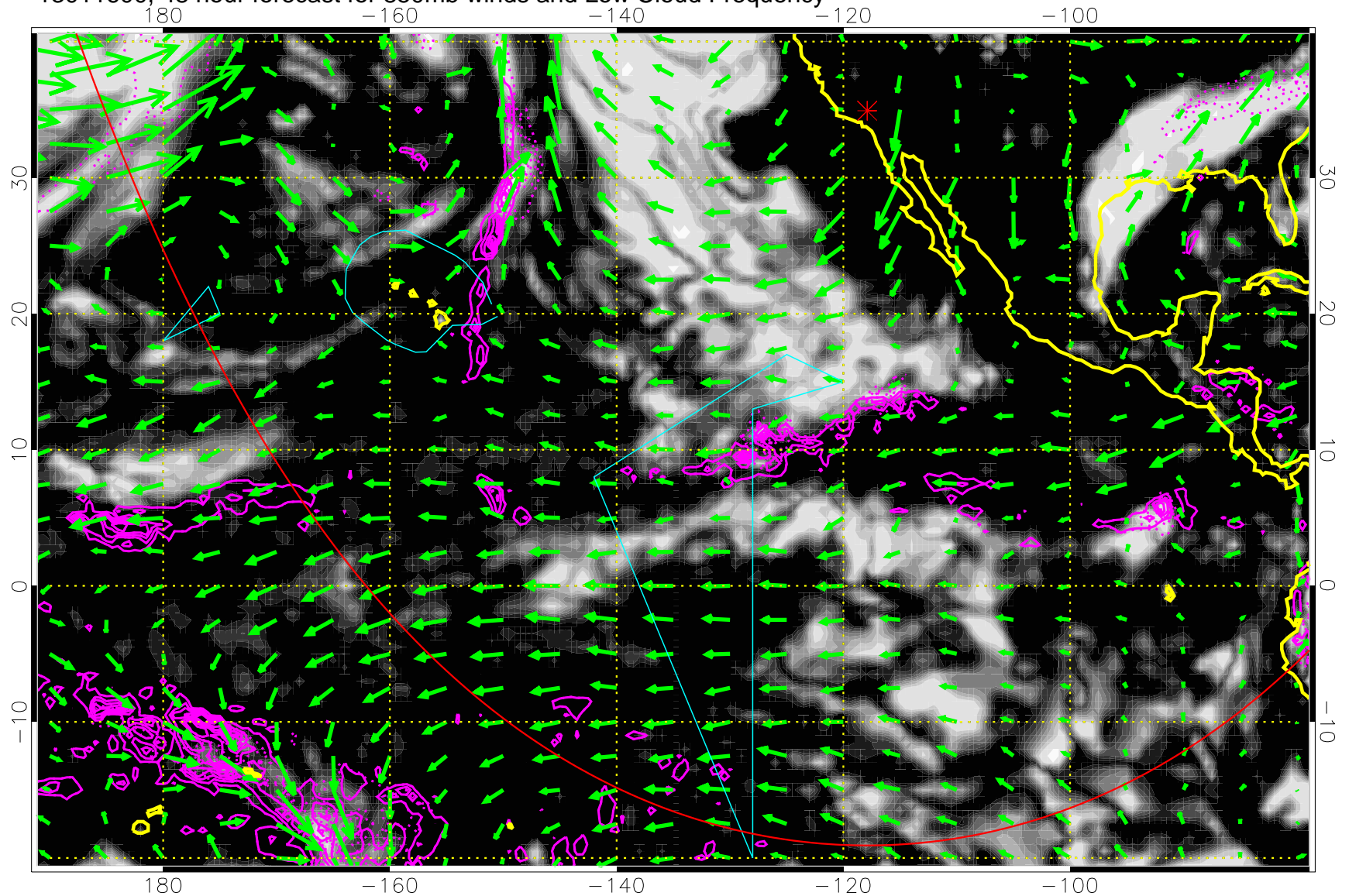
Precip (tot dot, conv sol) past 6 hrs 6 kg/m2 contours, min 4

→ 30 m/s

Range ring of 6000 km -- 19 hours GH round trip



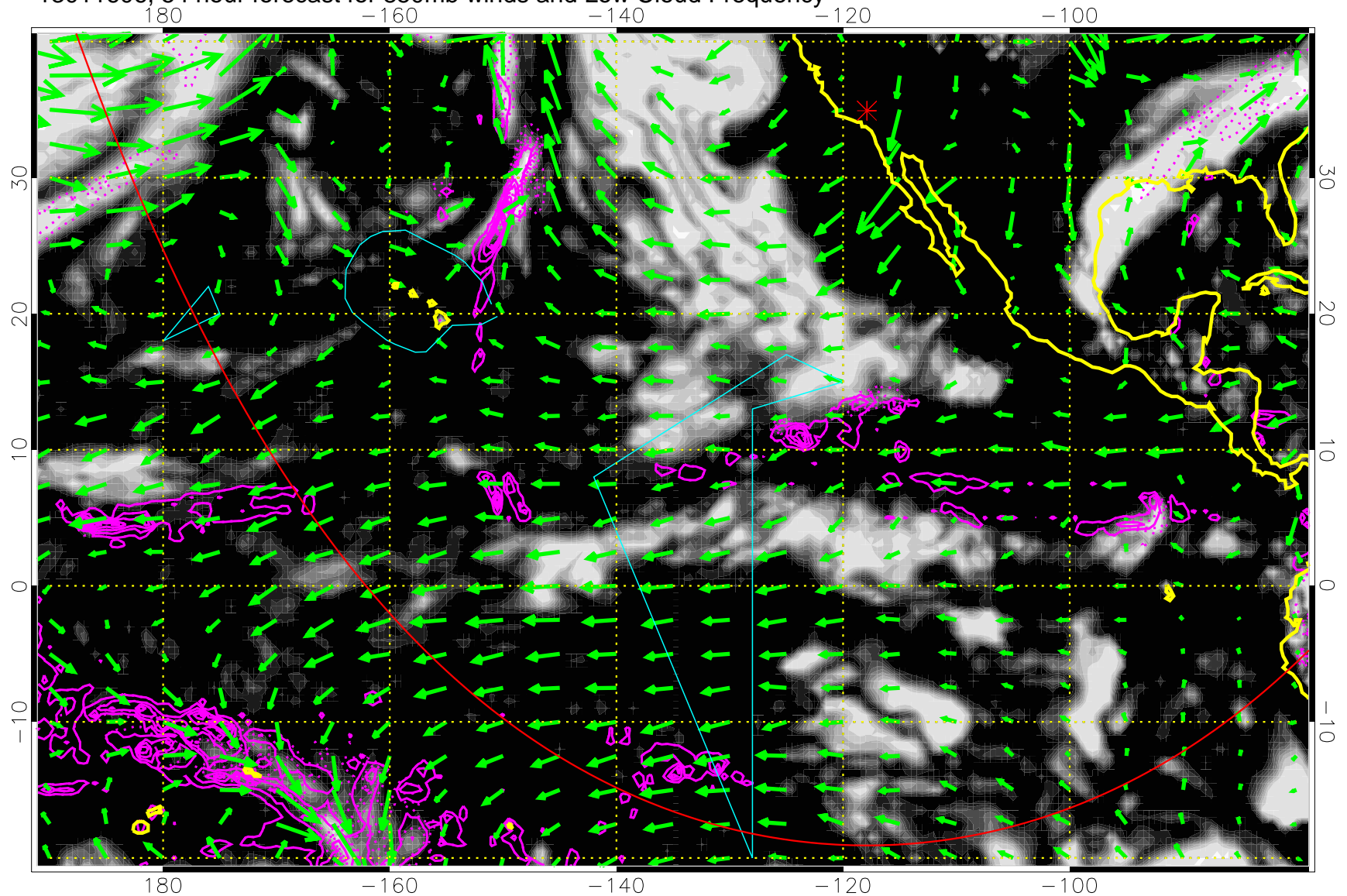
13011600, 48 hour forecast for 850mb winds and Low Cloud Frequency



Precip (tot dot, conv sol) past 6 hrs 6 kg/m2 contours, min 4

→ 30 m/s  
Range ring of 6000 km -- 19 hours GH round trip

13011606, 54 hour forecast for 850mb winds and Low Cloud Frequency



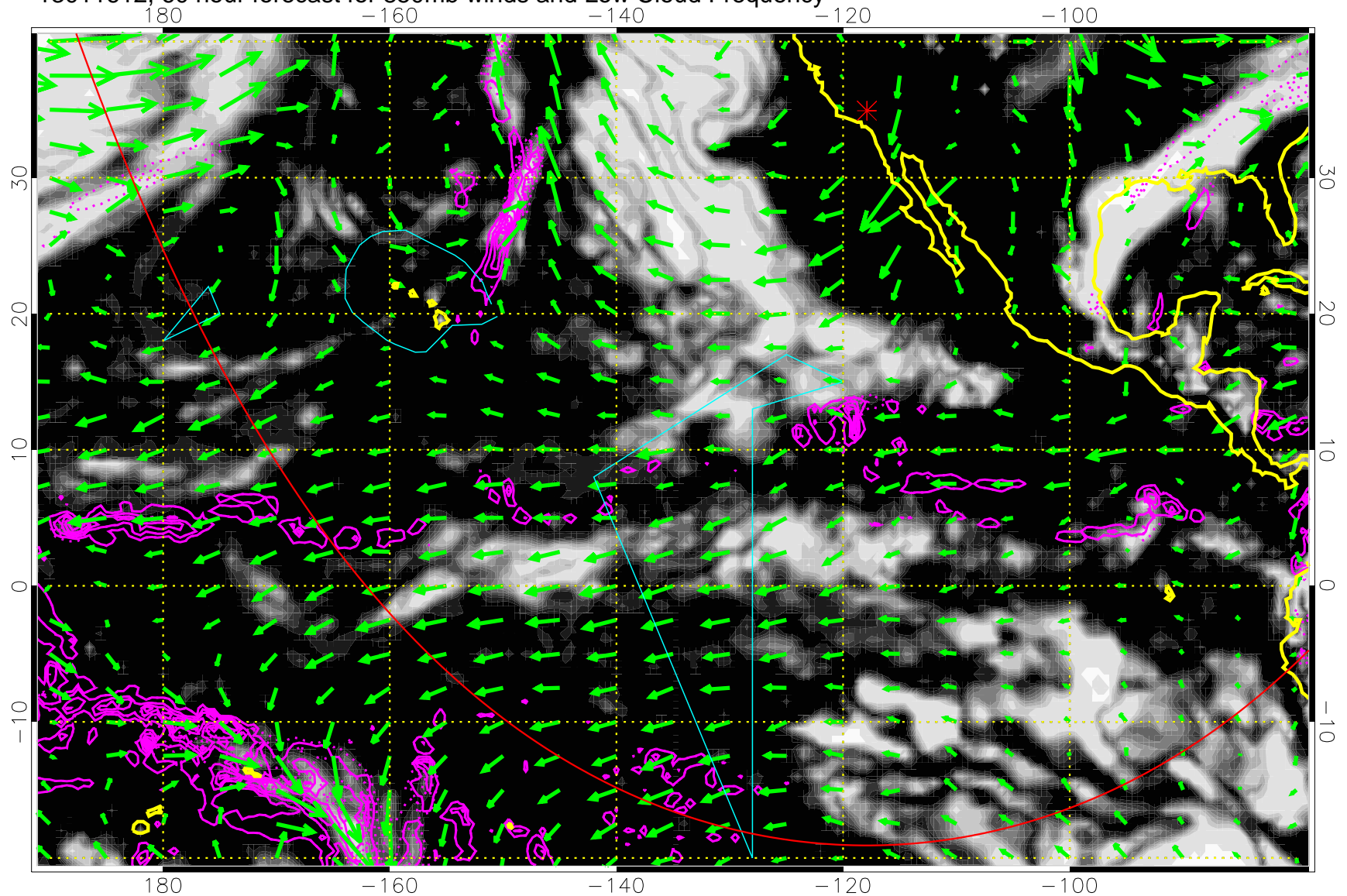
Precip (tot dot, conv sol) past 6 hrs 6 kg/m2 contours, min 4

→ 30 m/s

Range ring of 6000 km -- 19 hours GH round trip



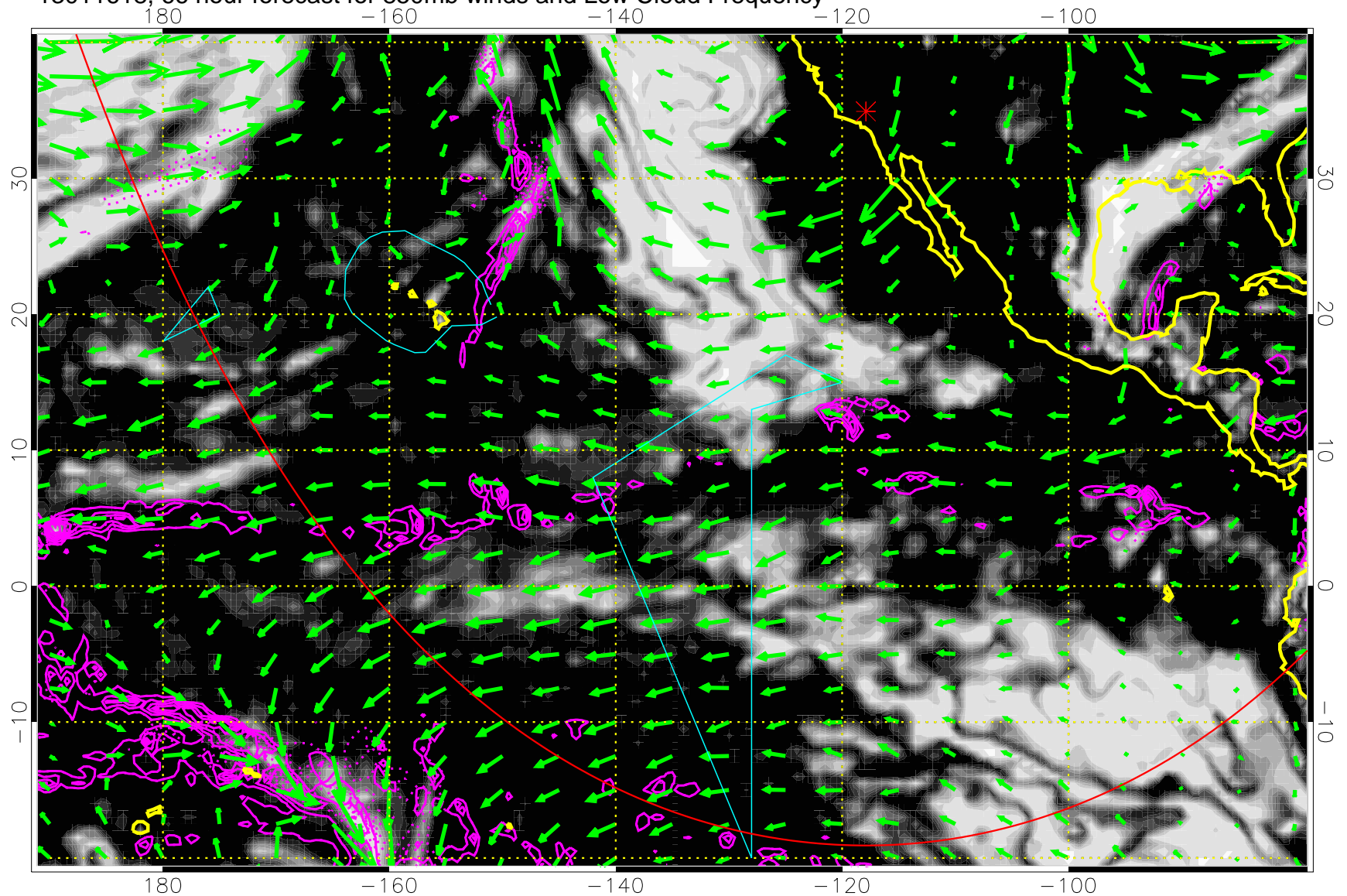
13011612, 60 hour forecast for 850mb winds and Low Cloud Frequency



Precip (tot dot, conv sol) past 6 hrs 6 kg/m2 contours, min 4

→ 30 m/s  
Range ring of 6000 km -- 19 hours GH round trip

13011618, 66 hour forecast for 850mb winds and Low Cloud Frequency



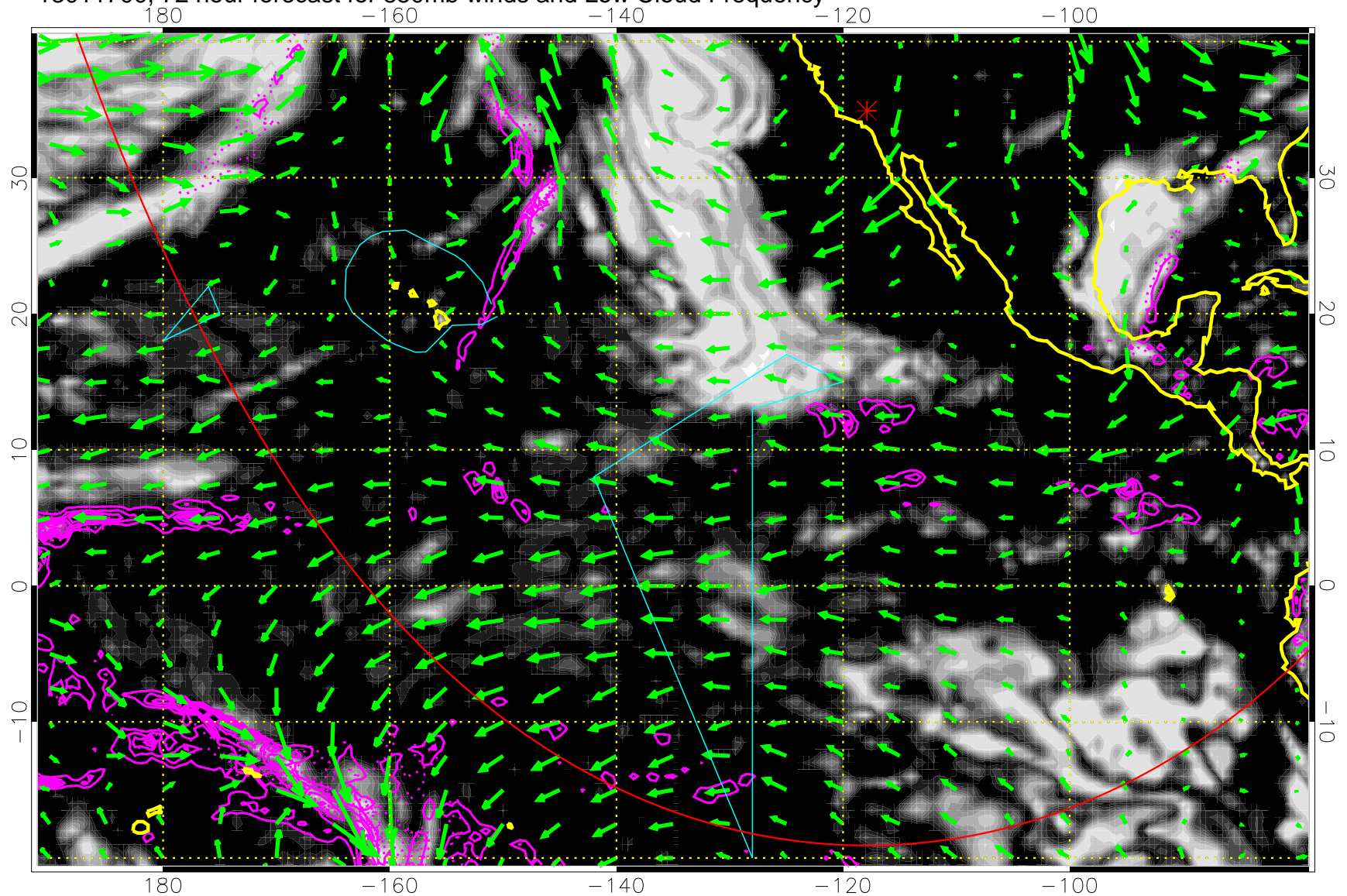
Precip (tot dot, conv sol) past 6 hrs 6 kg/m2 contours, min 4

→ 30 m/s

Range ring of 6000 km -- 19 hours GH round trip



13011700, 72 hour forecast for 850mb winds and Low Cloud Frequency

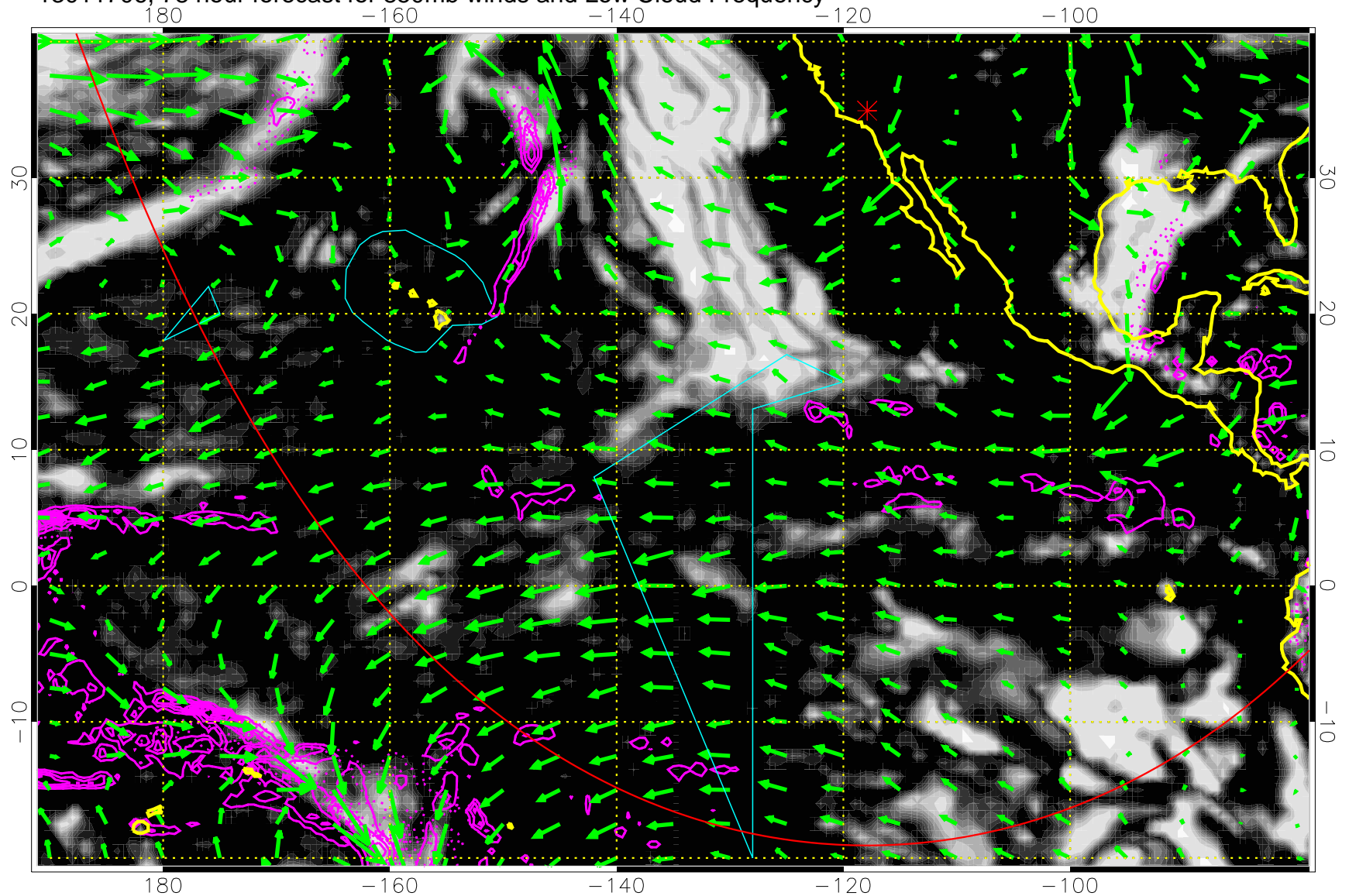


Precip (tot dot, conv sol) past 6 hrs 6 kg/m2 contours, min 4

→ 30 m/s

Range ring of 6000 km -- 19 hours GH round trip

13011706, 78 hour forecast for 850mb winds and Low Cloud Frequency



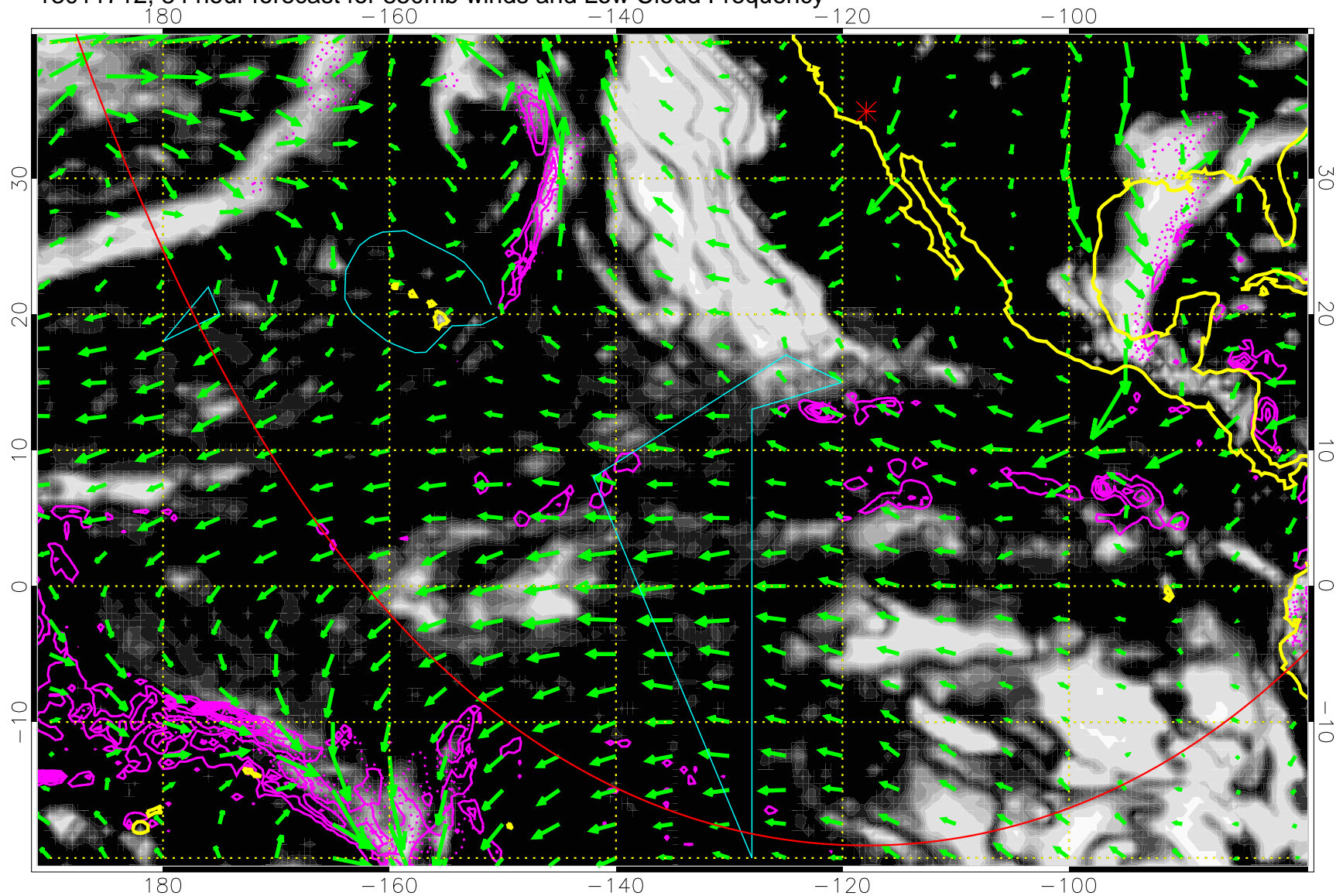
Precip (tot dot, conv sol) past 6 hrs 6 kg/m2 contours, min 4

→ 30 m/s

Range ring of 6000 km -- 19 hours GH round trip



13011712, 84 hour forecast for 850mb winds and Low Cloud Frequency

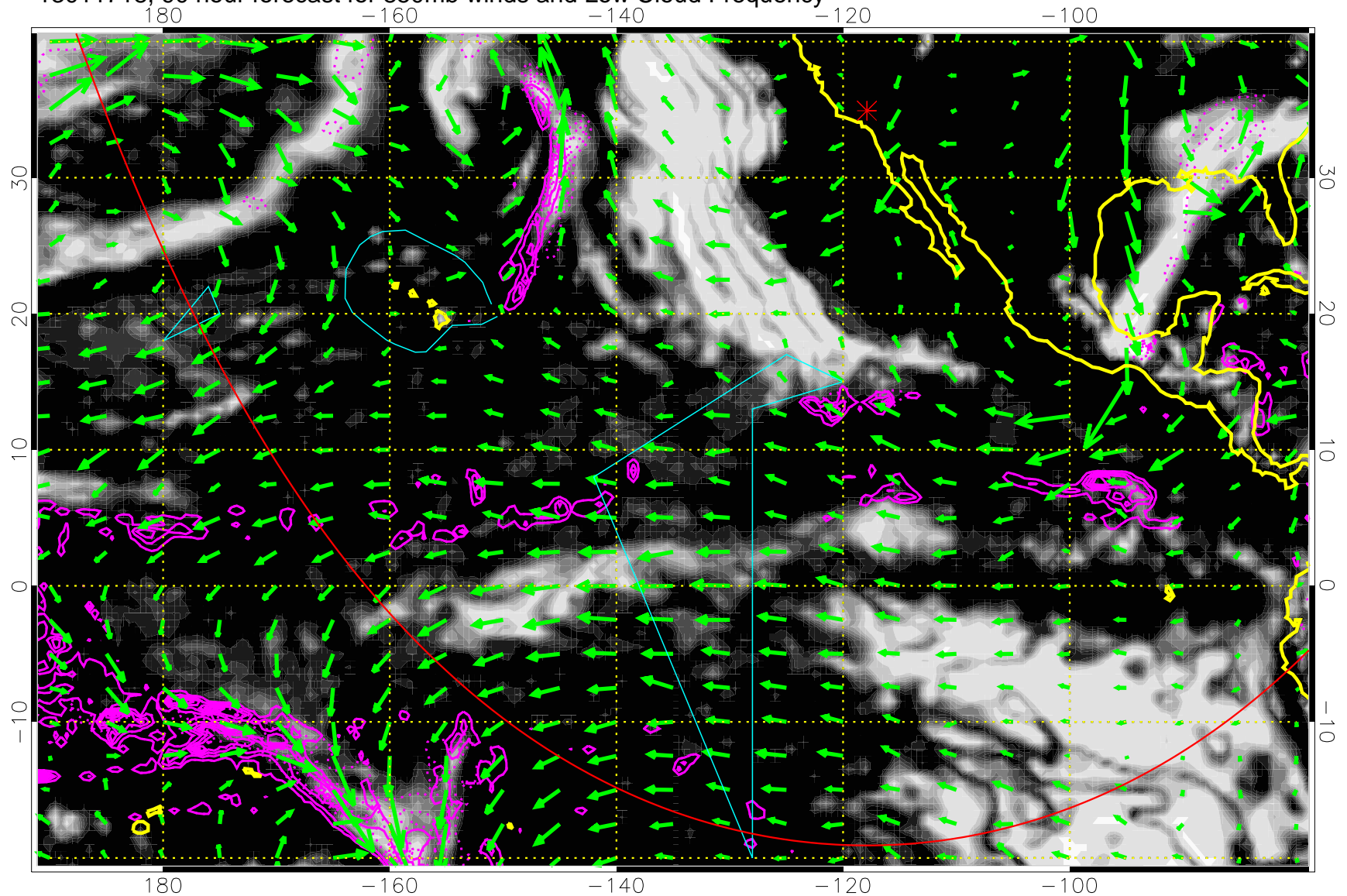


Precip (tot dot, conv sol) past 6 hrs 6 kg/m2 contours, min 4

→ 30 m/s

Range ring of 6000 km -- 19 hours GH round trip

13011718, 90 hour forecast for 850mb winds and Low Cloud Frequency



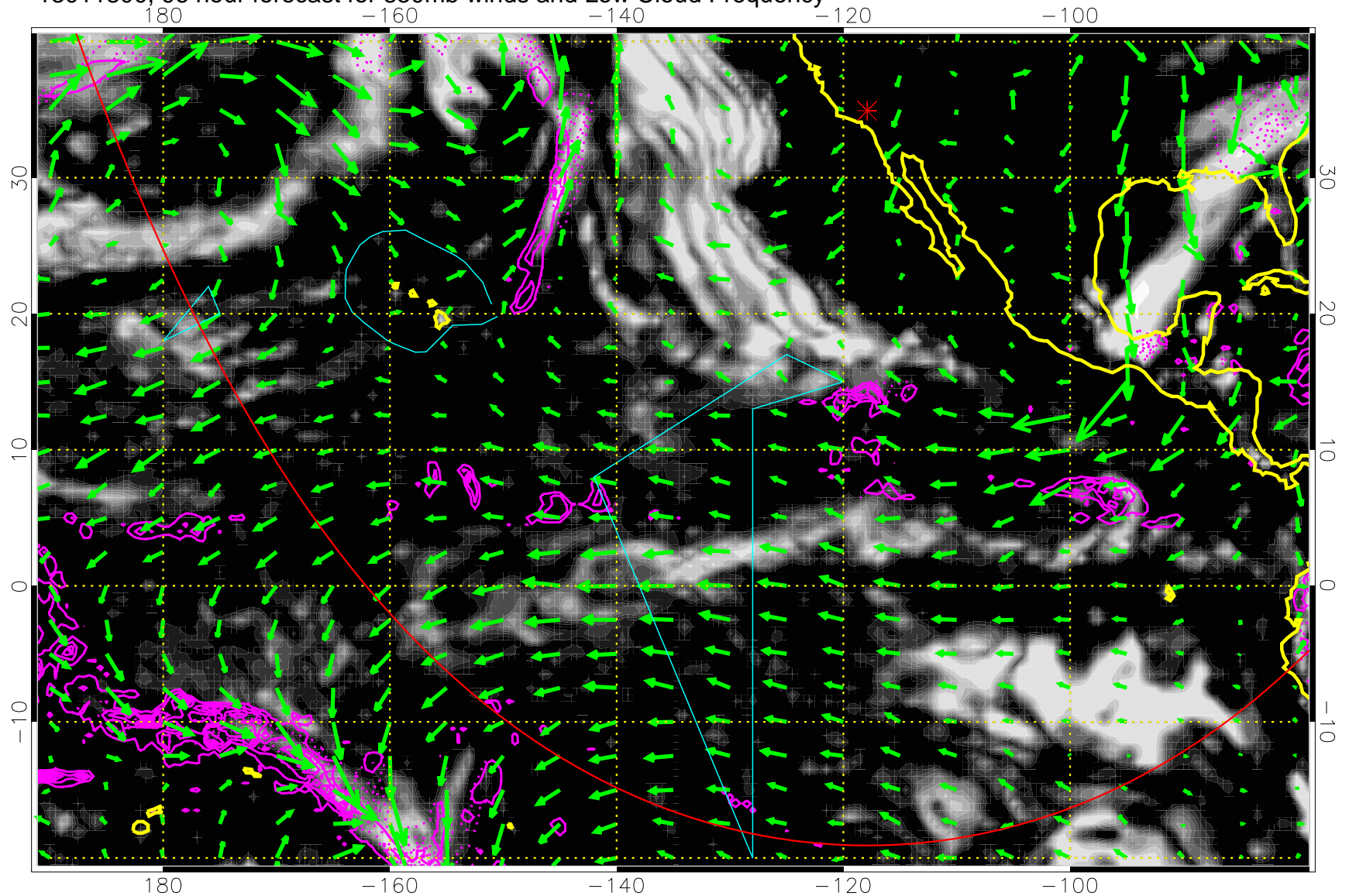
Precip (tot dot, conv sol) past 6 hrs 6 kg/m2 contours, min 4

→ 30 m/s

Range ring of 6000 km -- 19 hours GH round trip



13011800, 96 hour forecast for 850mb winds and Low Cloud Frequency

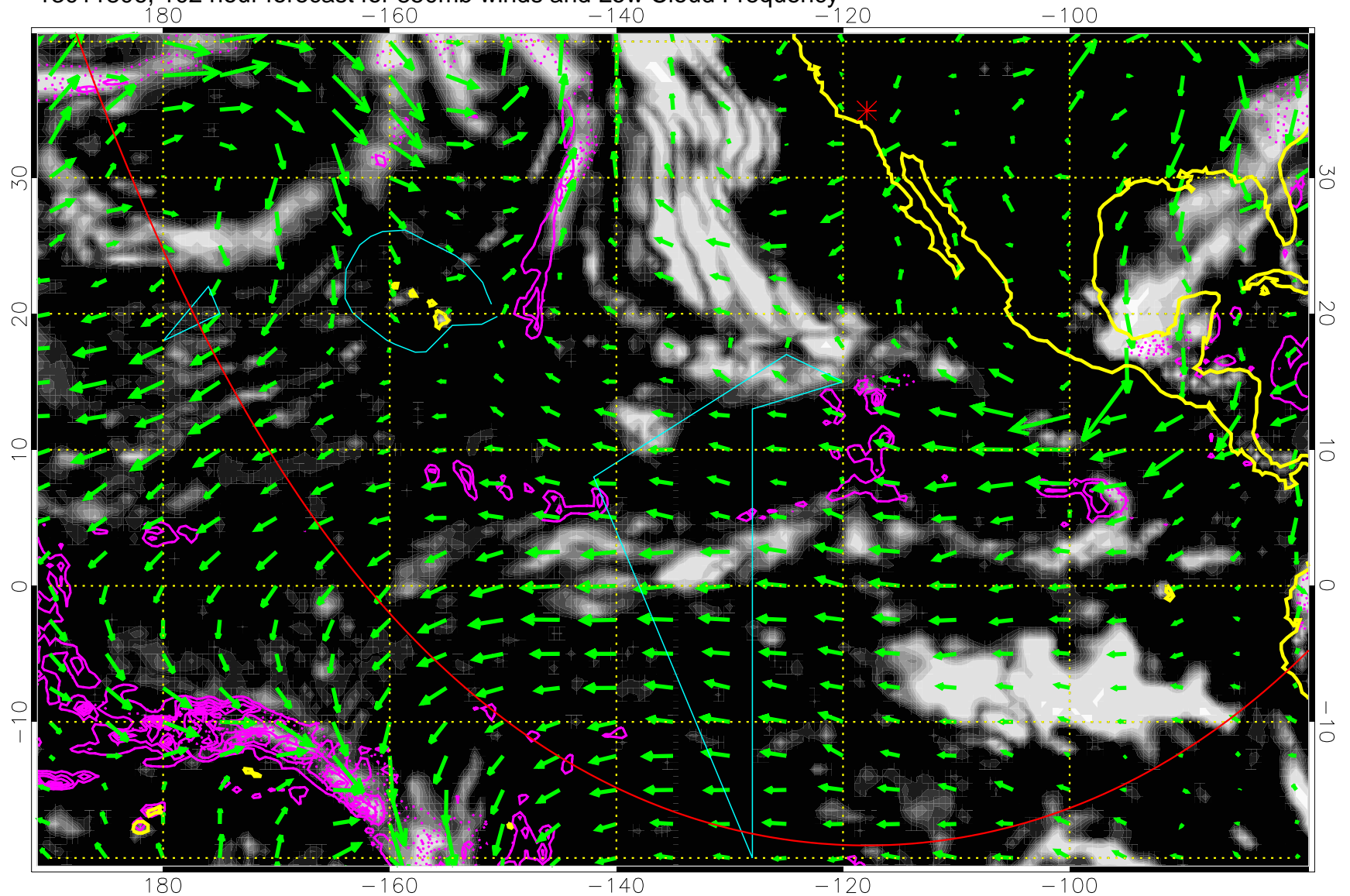


Precip (tot dot, conv sol) past 6 hrs 6 kg/m2 contours, min 4

→ 30 m/s

Range ring of 6000 km -- 19 hours GH round trip

13011806, 102 hour forecast for 850mb winds and Low Cloud Frequency

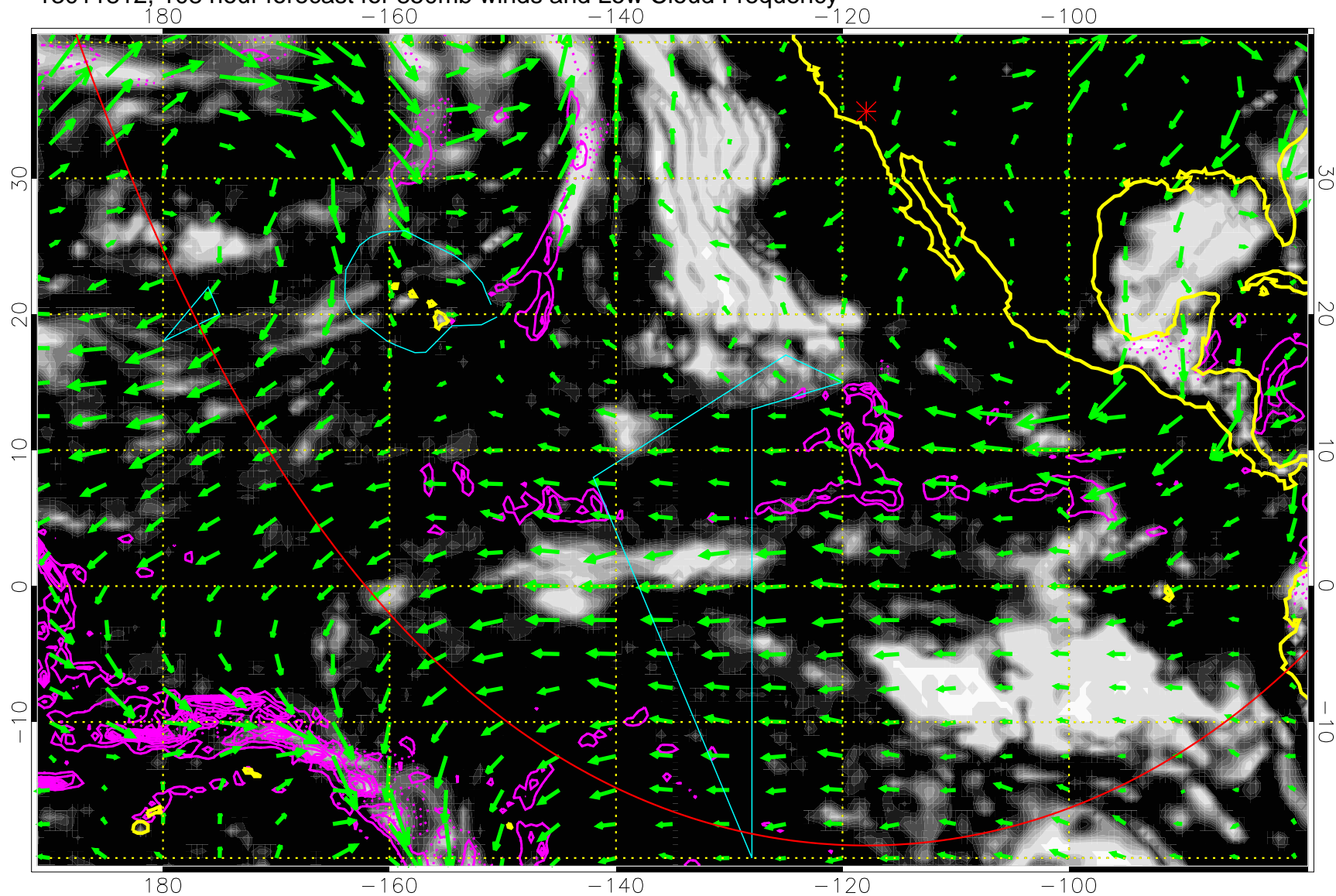


Precip (tot dot, conv sol) past 6 hrs 6 kg/m2 contours, min 4

→ 30 m/s  
Range ring of 6000 km -- 19 hours GH round trip



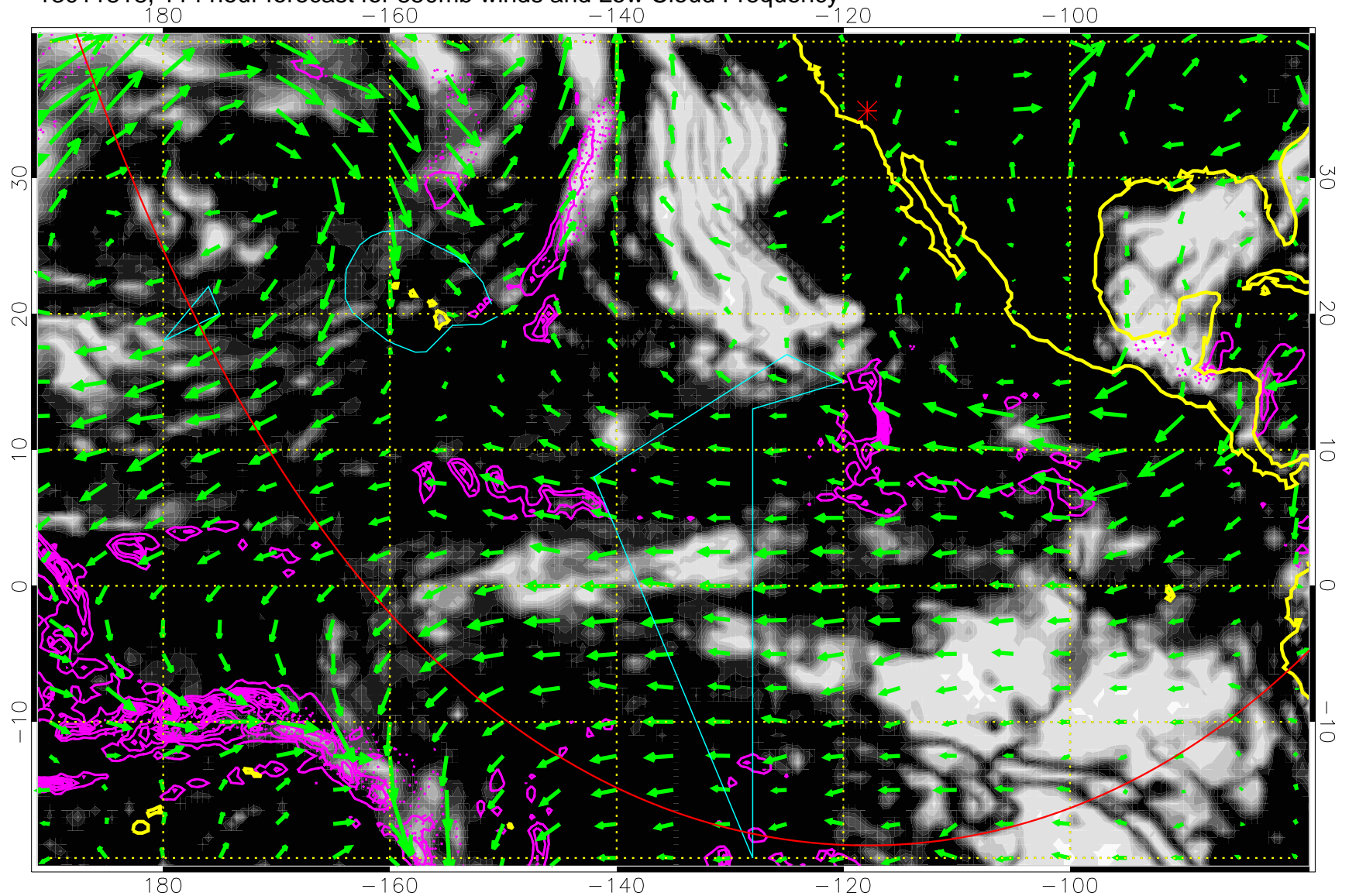
13011812, 108 hour forecast for 850mb winds and Low Cloud Frequency



Precip (tot dot, conv sol) past 6 hrs 6 kg/m2 contours, min 4

→ 30 m/s  
Range ring of 6000 km -- 19 hours GH round trip

13011818, 114 hour forecast for 850mb winds and Low Cloud Frequency



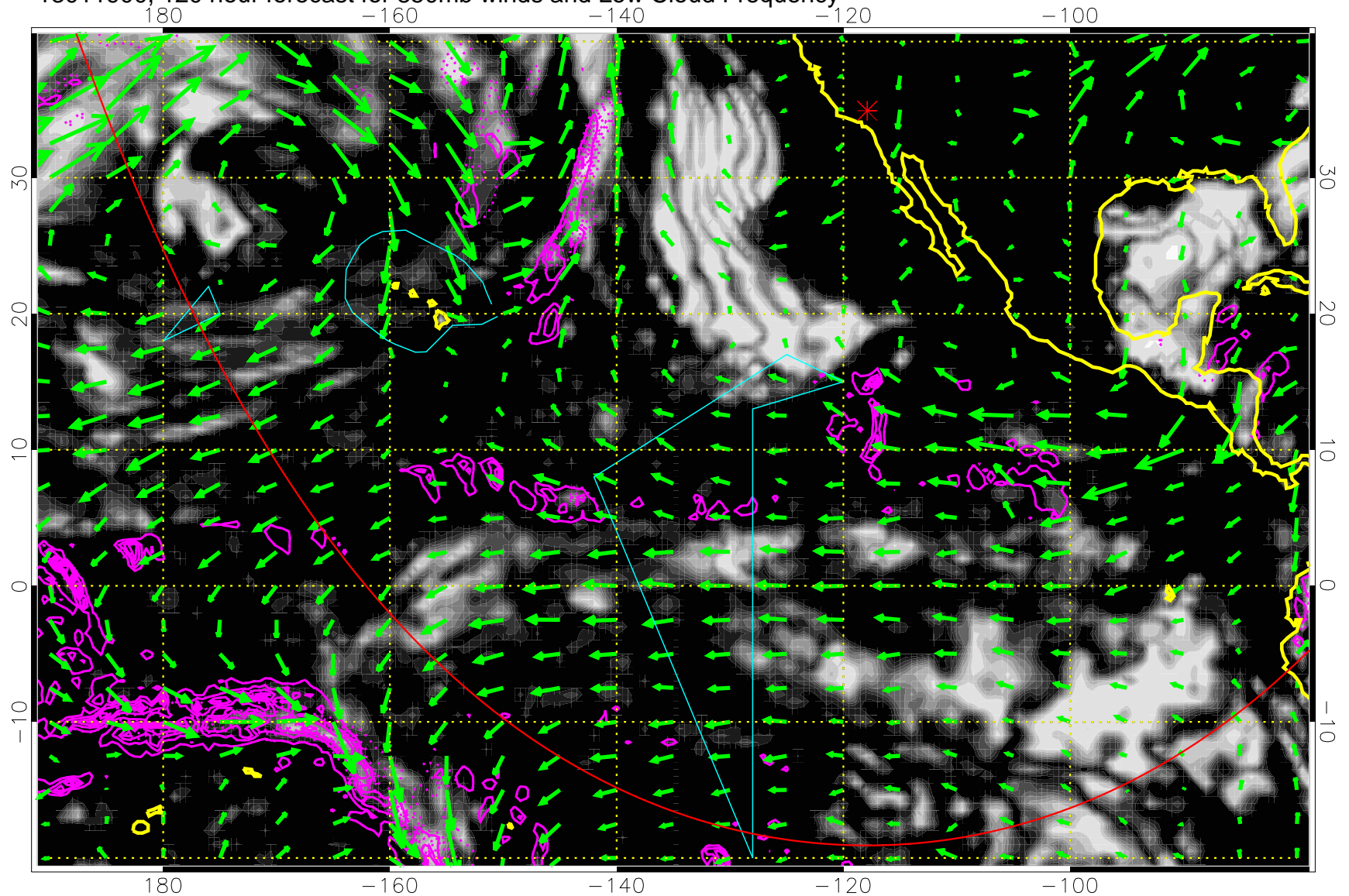
Precip (tot dot, conv sol) past 6 hrs 6 kg/m2 contours, min 4

→ 30 m/s

Range ring of 6000 km -- 19 hours GH round trip



13011900, 120 hour forecast for 850mb winds and Low Cloud Frequency



Precip (tot dot, conv sol) past 6 hrs 6 kg/m2 contours, min 4

→ 30 m/s

Range ring of 6000 km -- 19 hours GH round trip