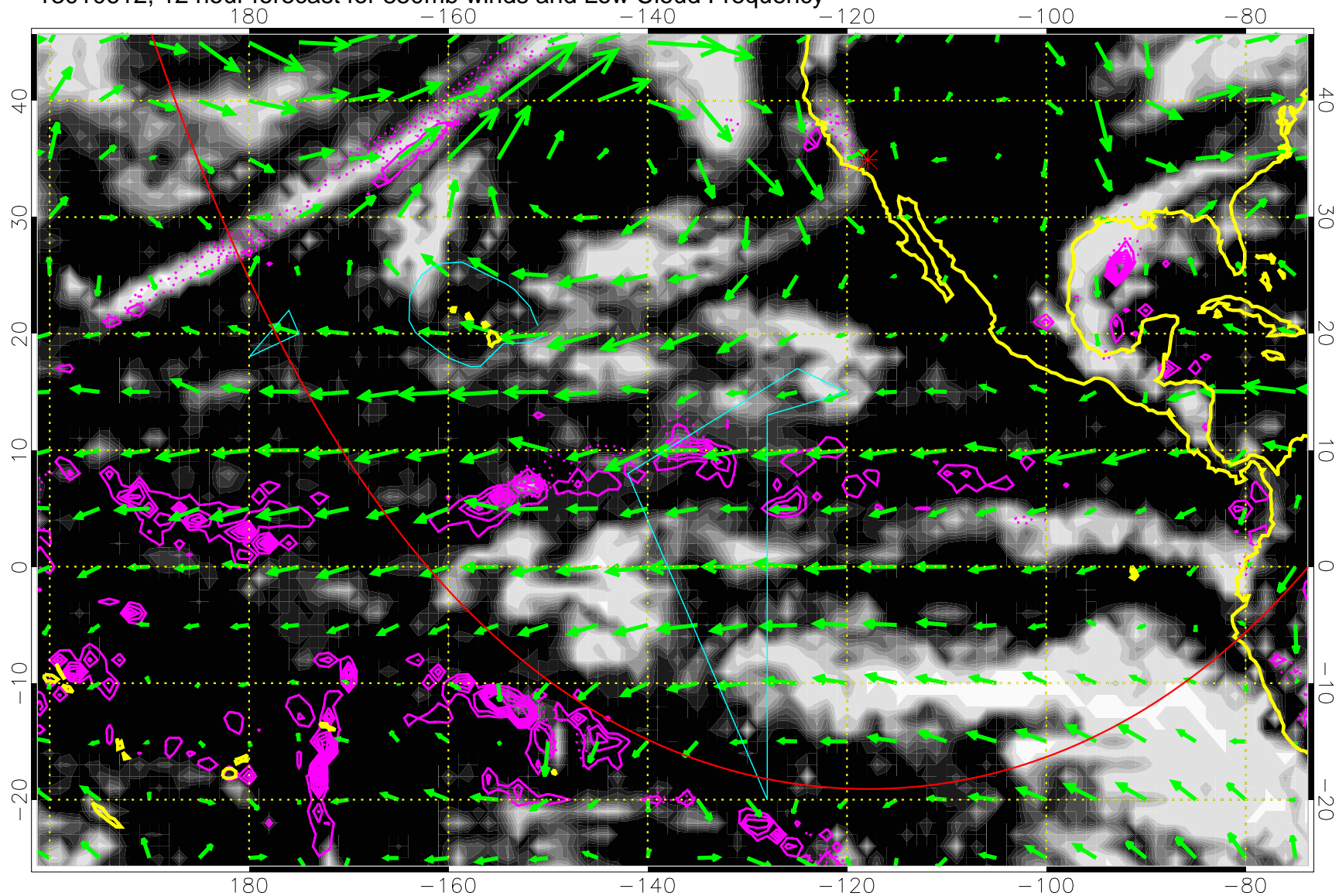


13010612, 12 hour forecast for 850mb winds and Low Cloud Frequency

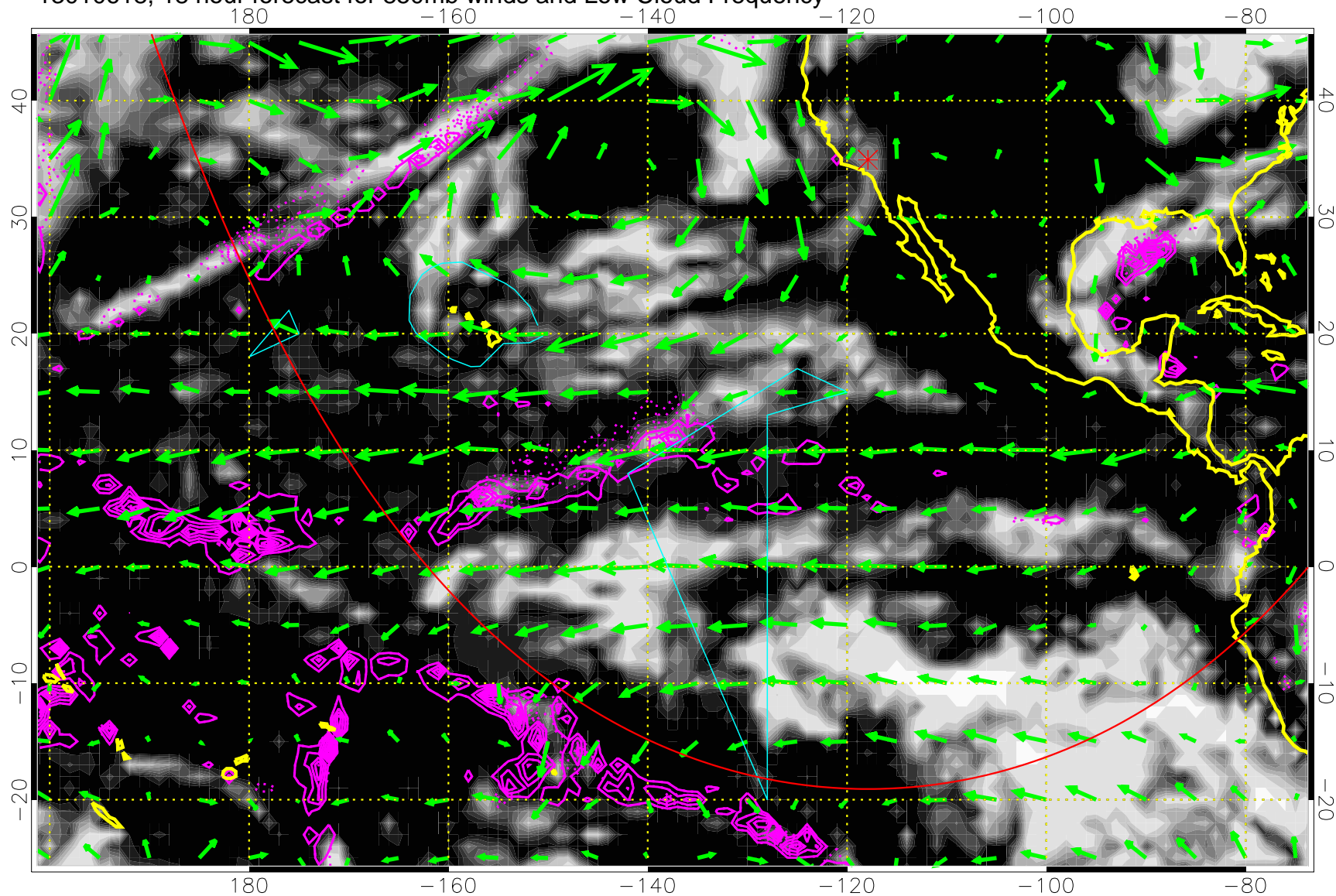


Precip (tot dotted, conv solid) past 6 hours 4 kg/m<sup>2</sup> contours

→ 20 m/s

Range ring of 6000 km -- 19 hours GH round trip

13010618, 18 hour forecast for 850mb winds and Low Cloud Frequency

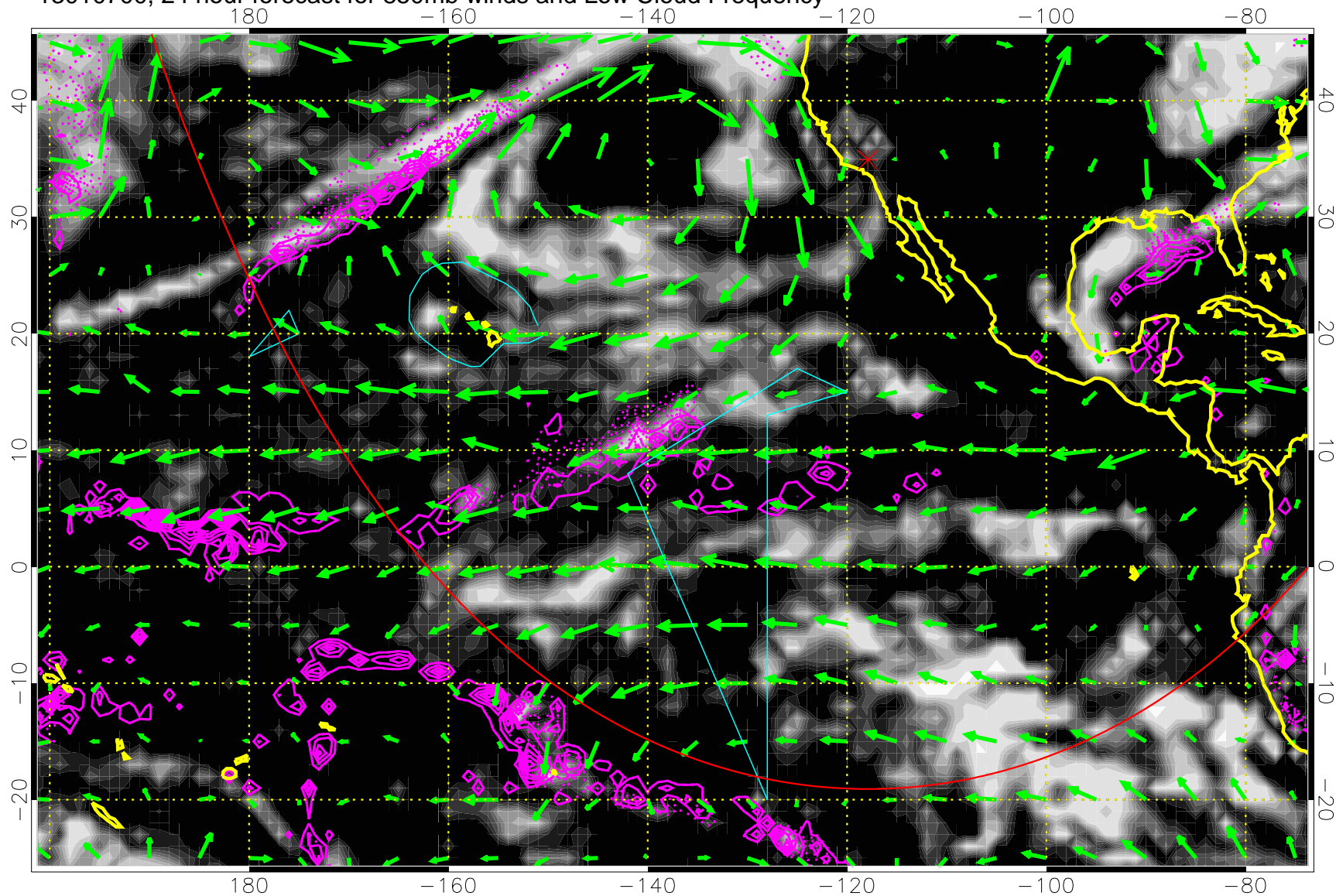


Precip (tot dotted, conv solid) past 6 hours 4 kg/m<sup>2</sup> contours

→ 20 m/s

Range ring of 6000 km -- 19 hours GH round trip

13010700, 24 hour forecast for 850mb winds and Low Cloud Frequency

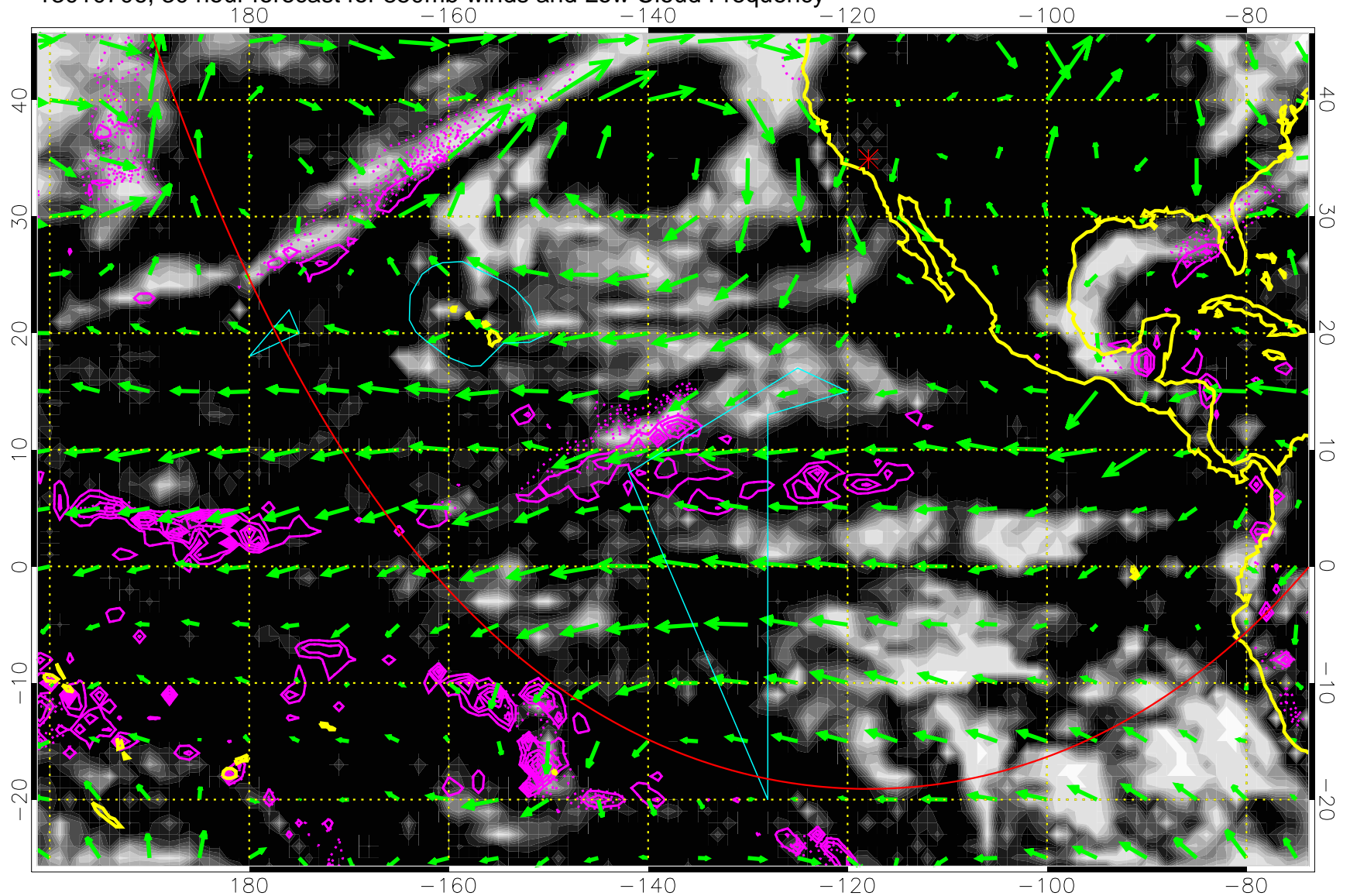


Precip (tot dotted, conv solid) past 6 hours 4 kg/m<sup>2</sup> contours

→ 20 m/s

Range ring of 6000 km -- 19 hours GH round trip

13010706, 30 hour forecast for 850mb winds and Low Cloud Frequency

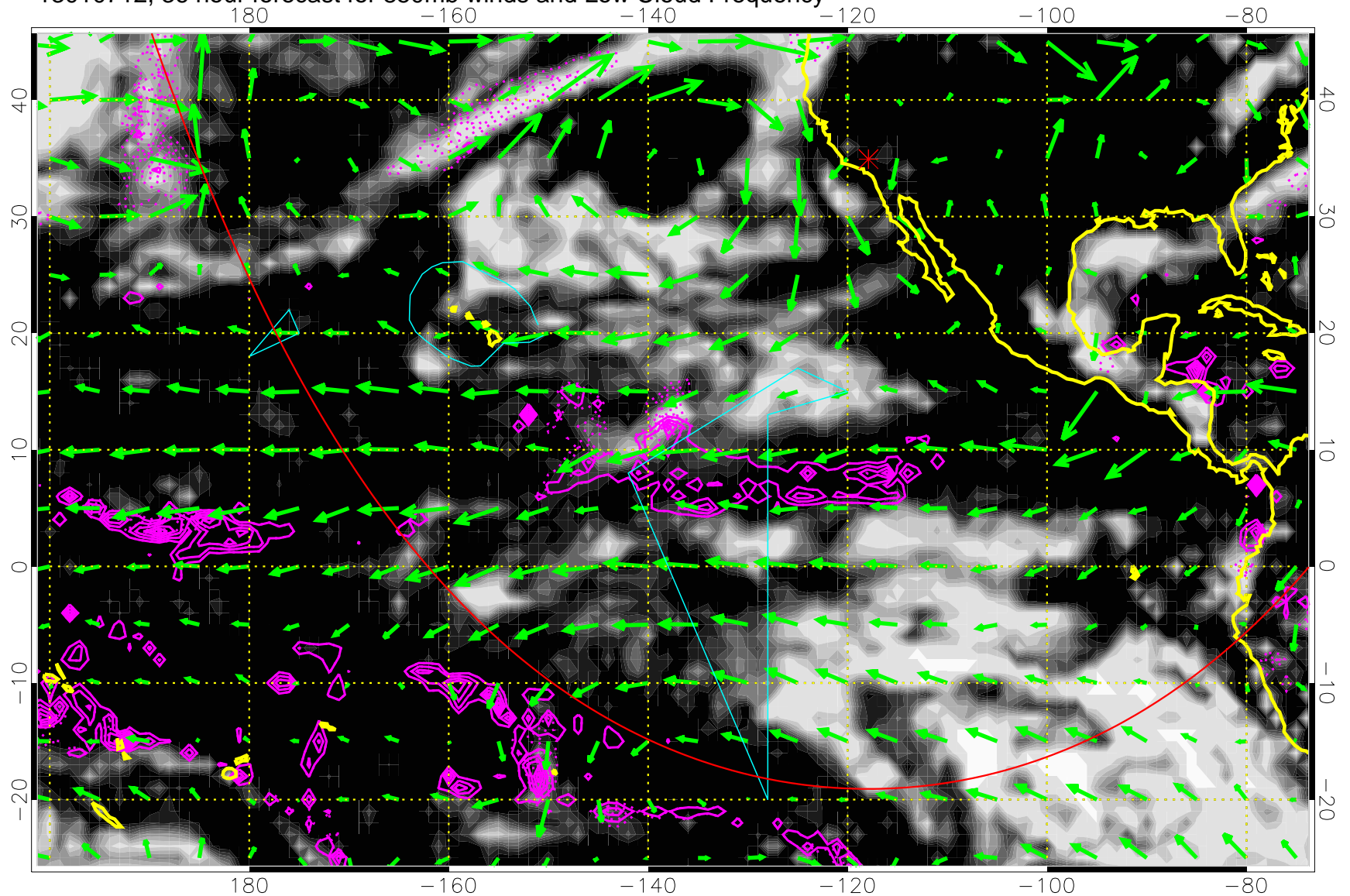


Precip (tot dotted, conv solid) past 6 hours 4 kg/m<sup>2</sup> contours

→ 20 m/s

Range ring of 6000 km -- 19 hours GH round trip

13010712, 36 hour forecast for 850mb winds and Low Cloud Frequency

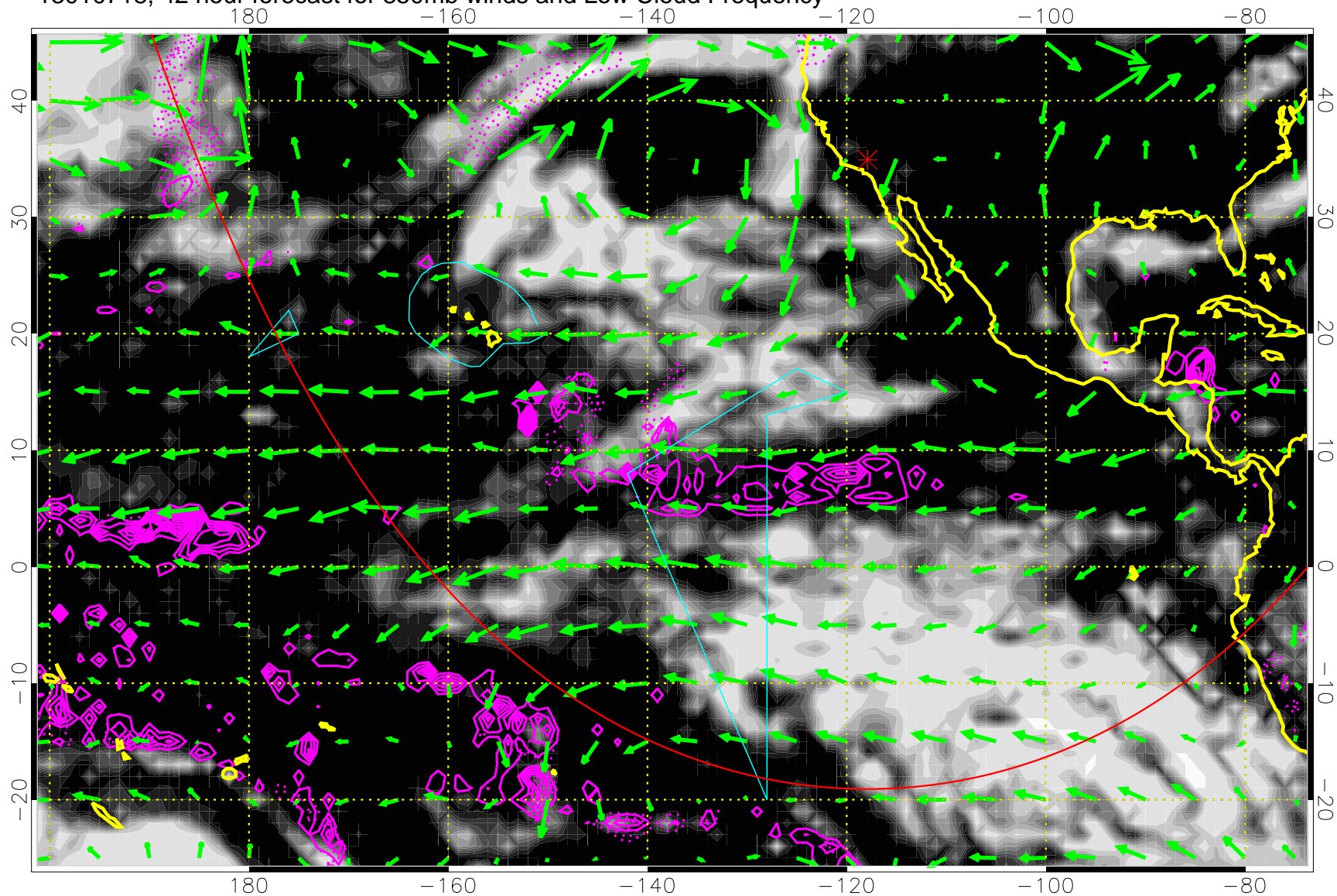


Precip (tot dotted, conv solid) past 6 hours 4 kg/m<sup>2</sup> contours

→ 20 m/s

Range ring of 6000 km -- 19 hours GH round trip

13010718, 42 hour forecast for 850mb winds and Low Cloud Frequency

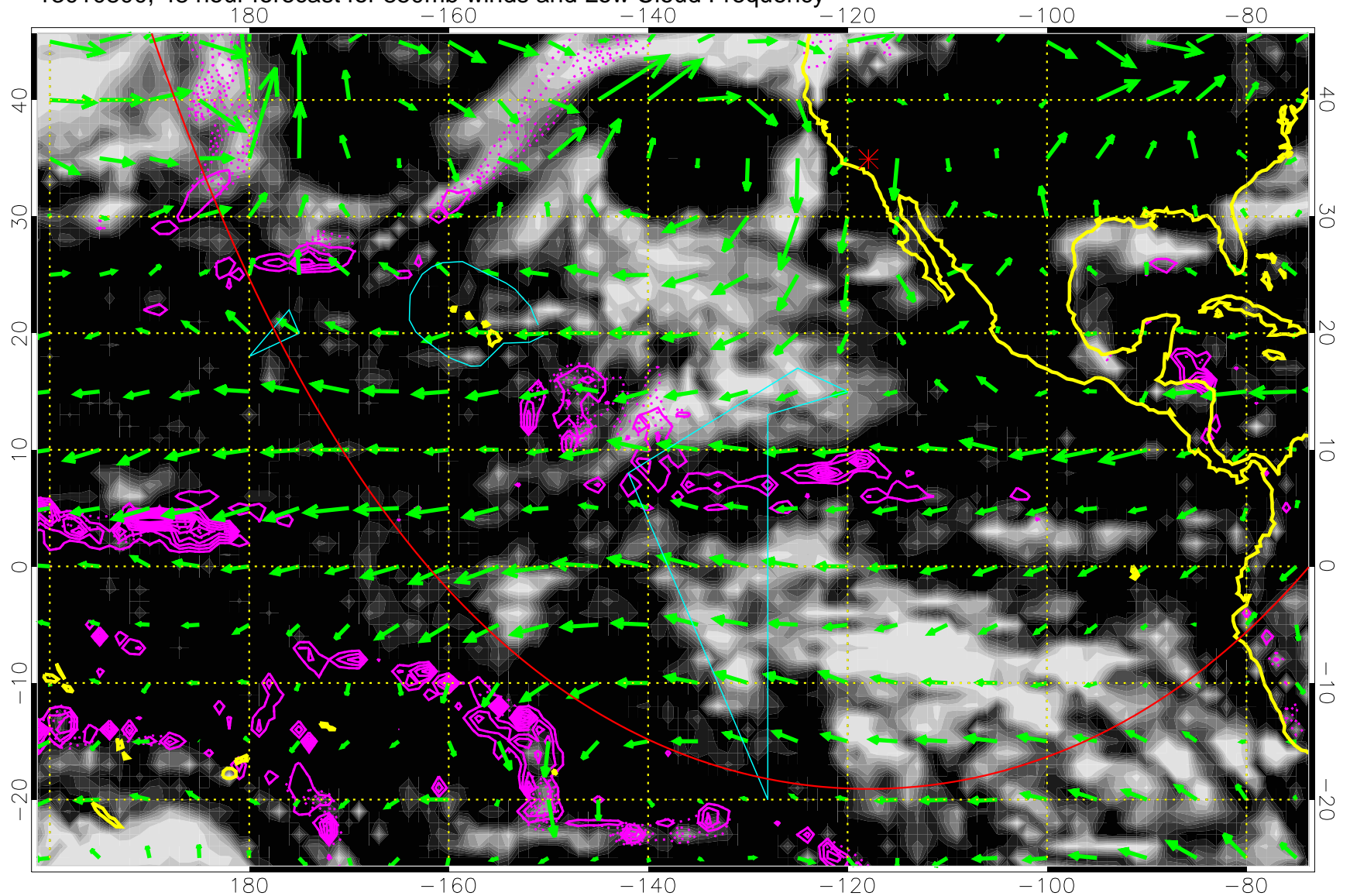


Precip (tot dotted, conv solid) past 6 hours 4 kg/m<sup>2</sup> contours

→ 20 m/s

Range ring of 6000 km -- 19 hours GH round trip

13010800, 48 hour forecast for 850mb winds and Low Cloud Frequency

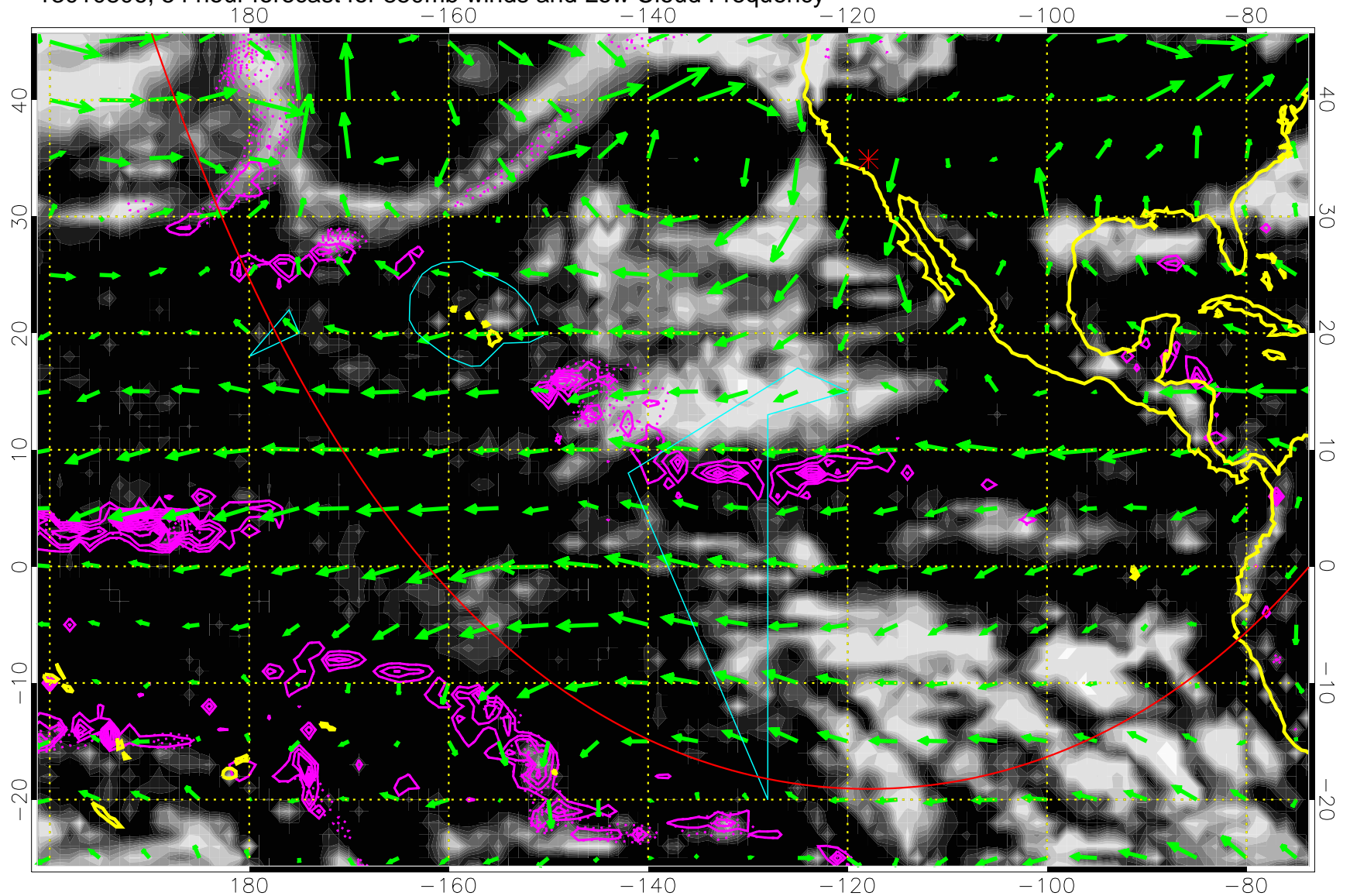


Precip (tot dotted, conv solid) past 6 hours 4 kg/m<sup>2</sup> contours

→ 20 m/s

Range ring of 6000 km -- 19 hours GH round trip

13010806, 54 hour forecast for 850mb winds and Low Cloud Frequency



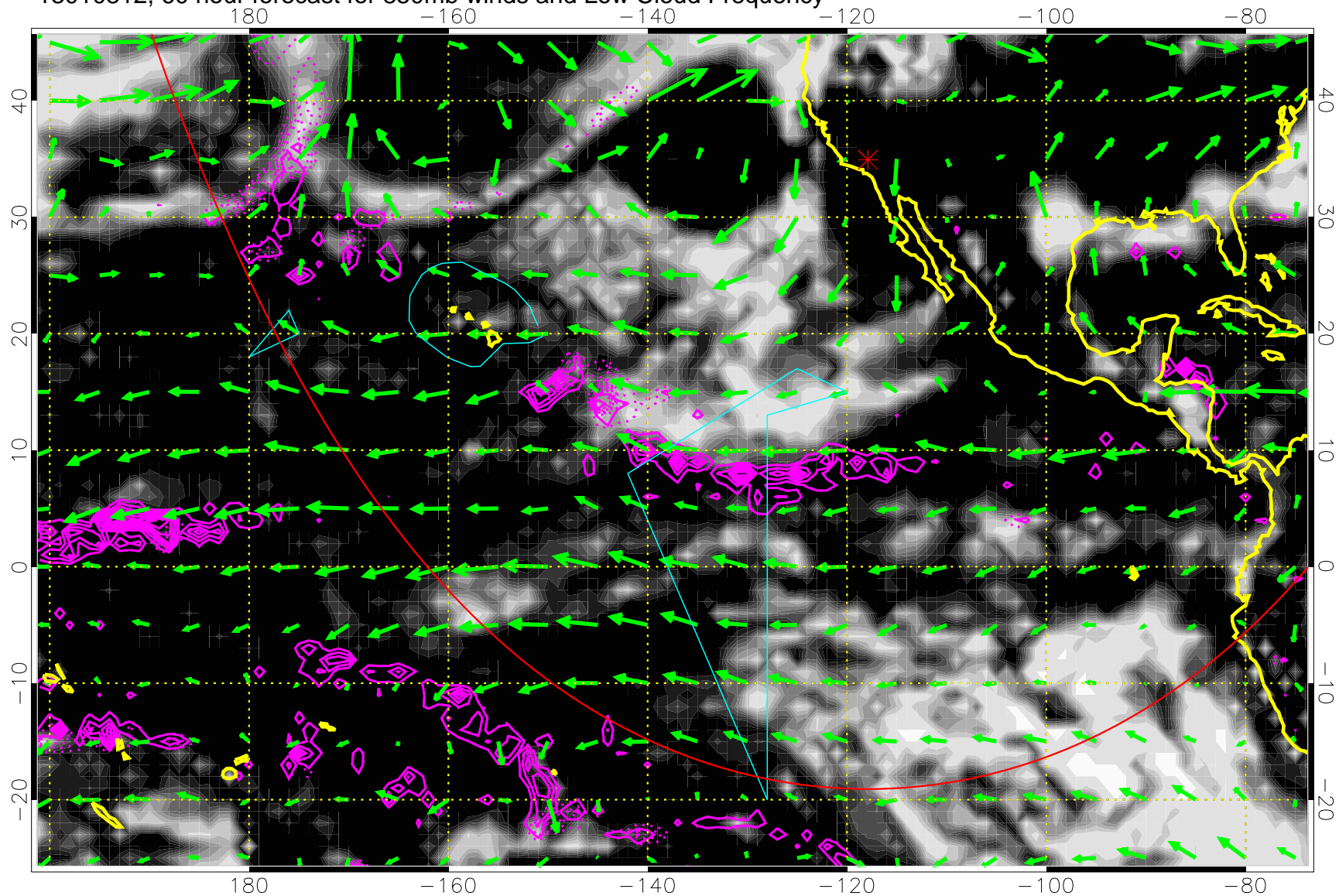
Precip (tot dotted, conv solid) past 6 hours 4 kg/m<sup>2</sup> contours

→ 20 m/s

Range ring of 6000 km -- 19 hours GH round trip



13010812, 60 hour forecast for 850mb winds and Low Cloud Frequency

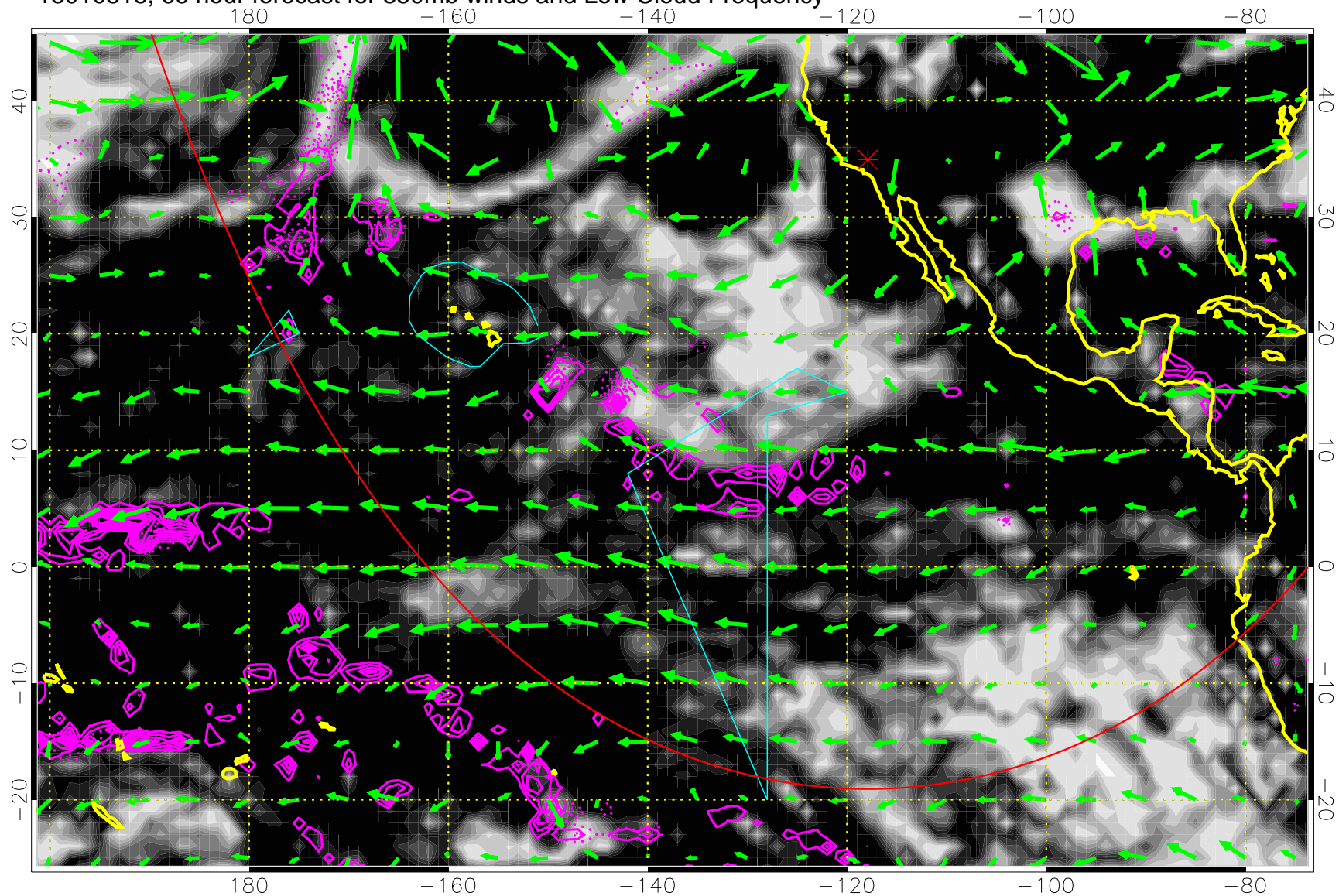


Precip (tot dotted, conv solid) past 6 hours 4 kg/m<sup>2</sup> contours

→ 20 m/s

Range ring of 6000 km -- 19 hours GH round trip

13010818, 66 hour forecast for 850mb winds and Low Cloud Frequency

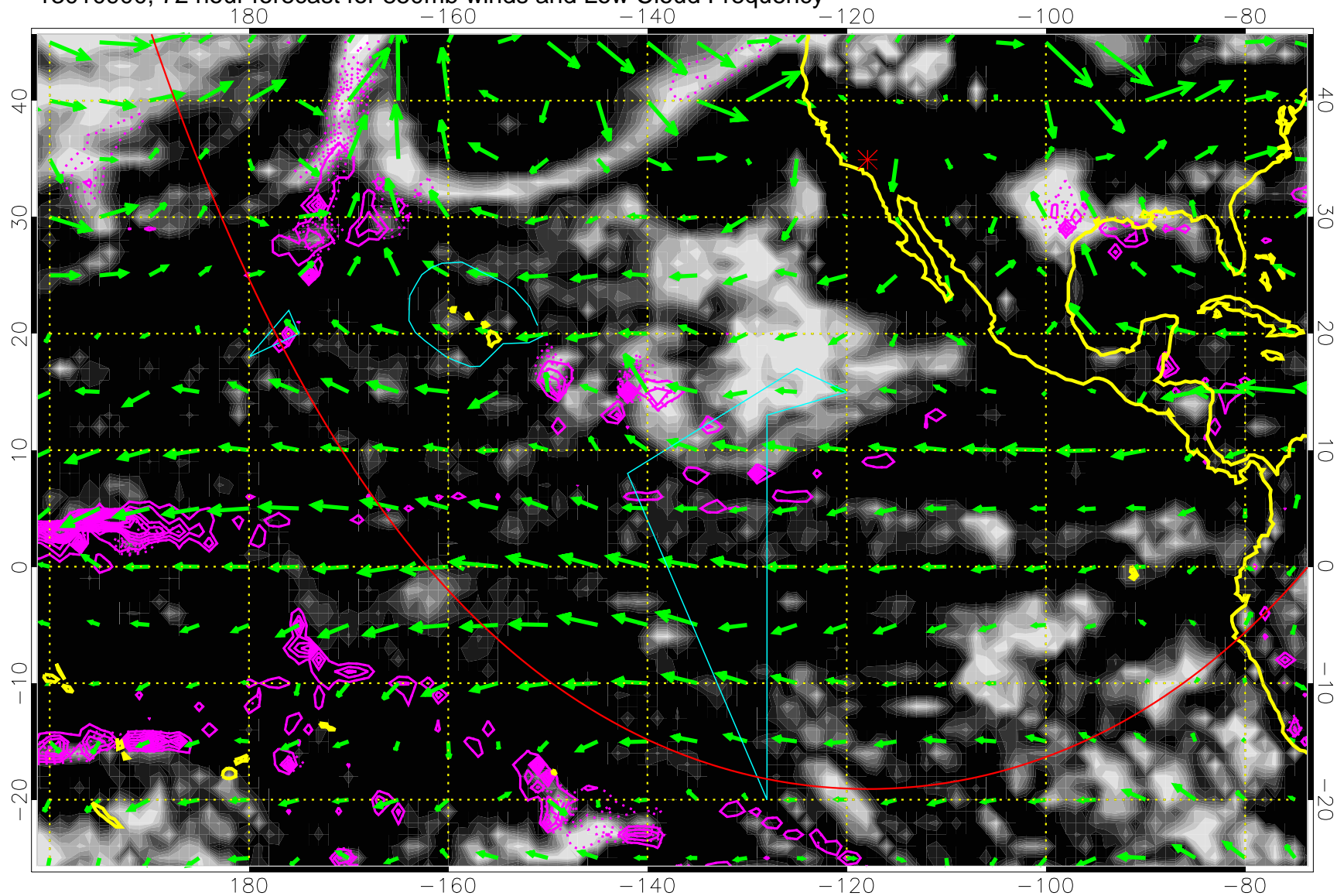


Precip (tot dotted, conv solid) past 6 hours 4 kg/m<sup>2</sup> contours

→ 20 m/s

Range ring of 6000 km -- 19 hours GH round trip

13010900, 72 hour forecast for 850mb winds and Low Cloud Frequency

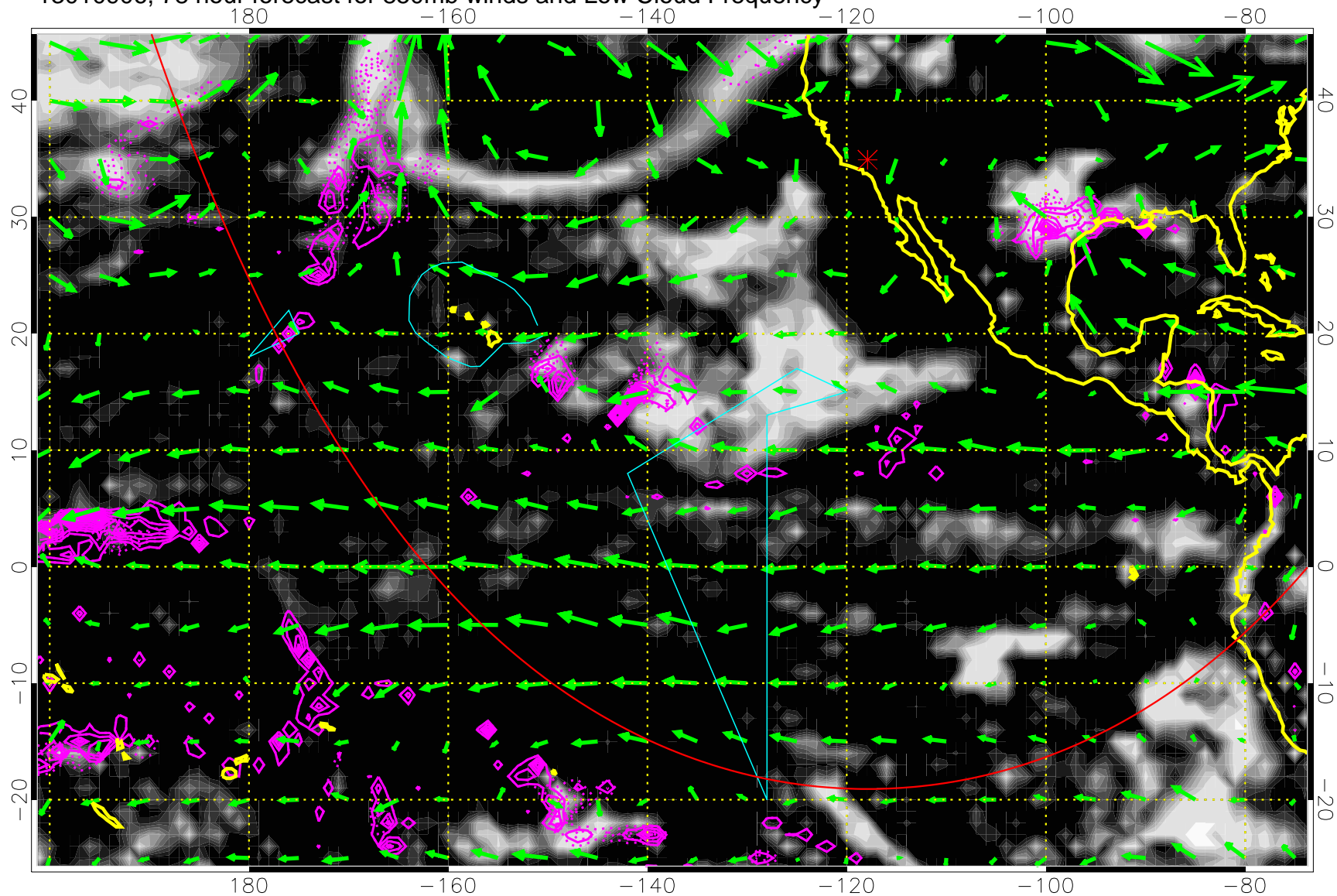


Precip (tot dotted, conv solid) past 6 hours 4 kg/m<sup>2</sup> contours

→ 20 m/s

Range ring of 6000 km -- 19 hours GH round trip

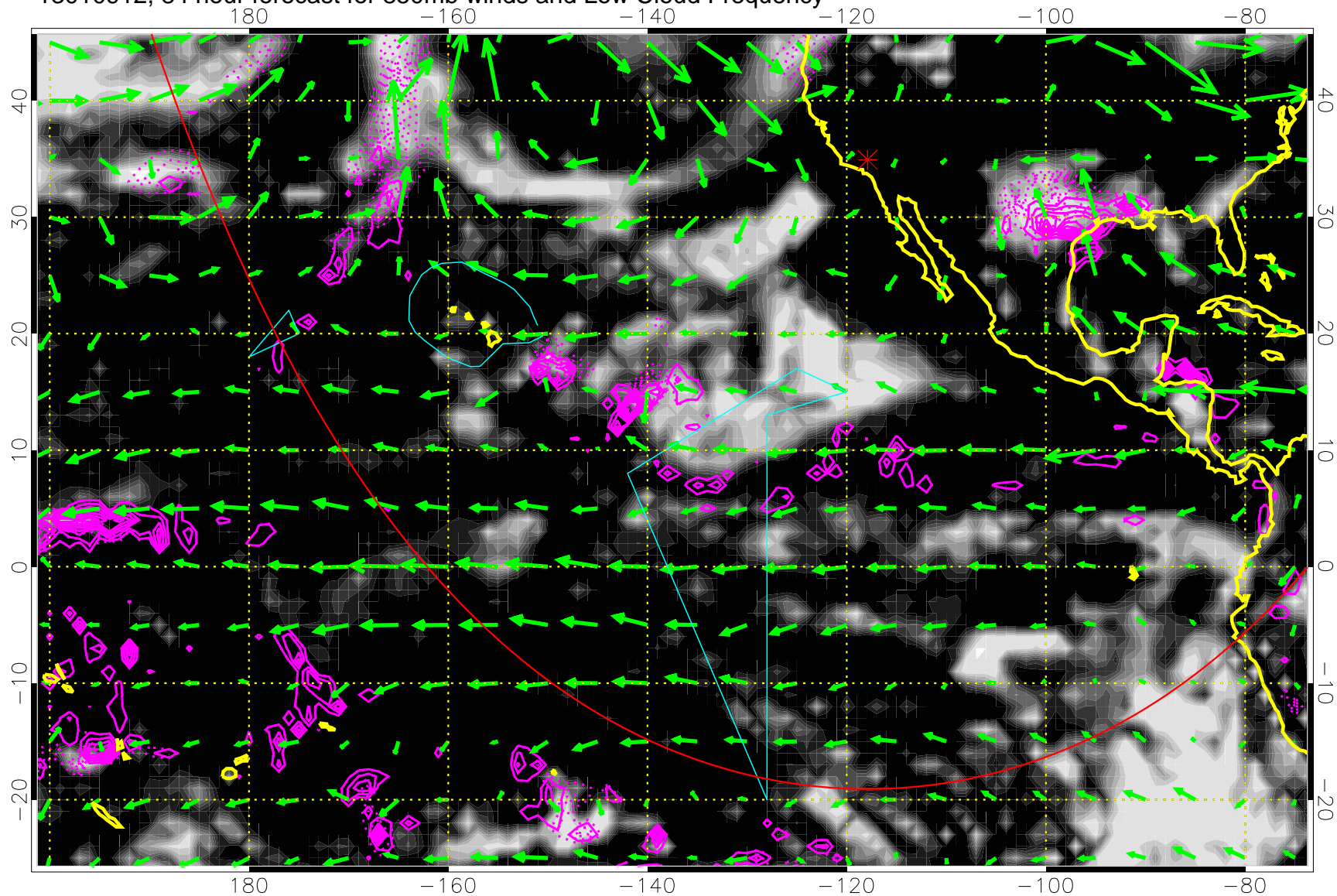
13010906, 78 hour forecast for 850mb winds and Low Cloud Frequency



Precip (tot dotted, conv solid) past 6 hours 4 kg/m<sup>2</sup> contours

→ 20 m/s  
Range ring of 6000 km -- 19 hours GH round trip

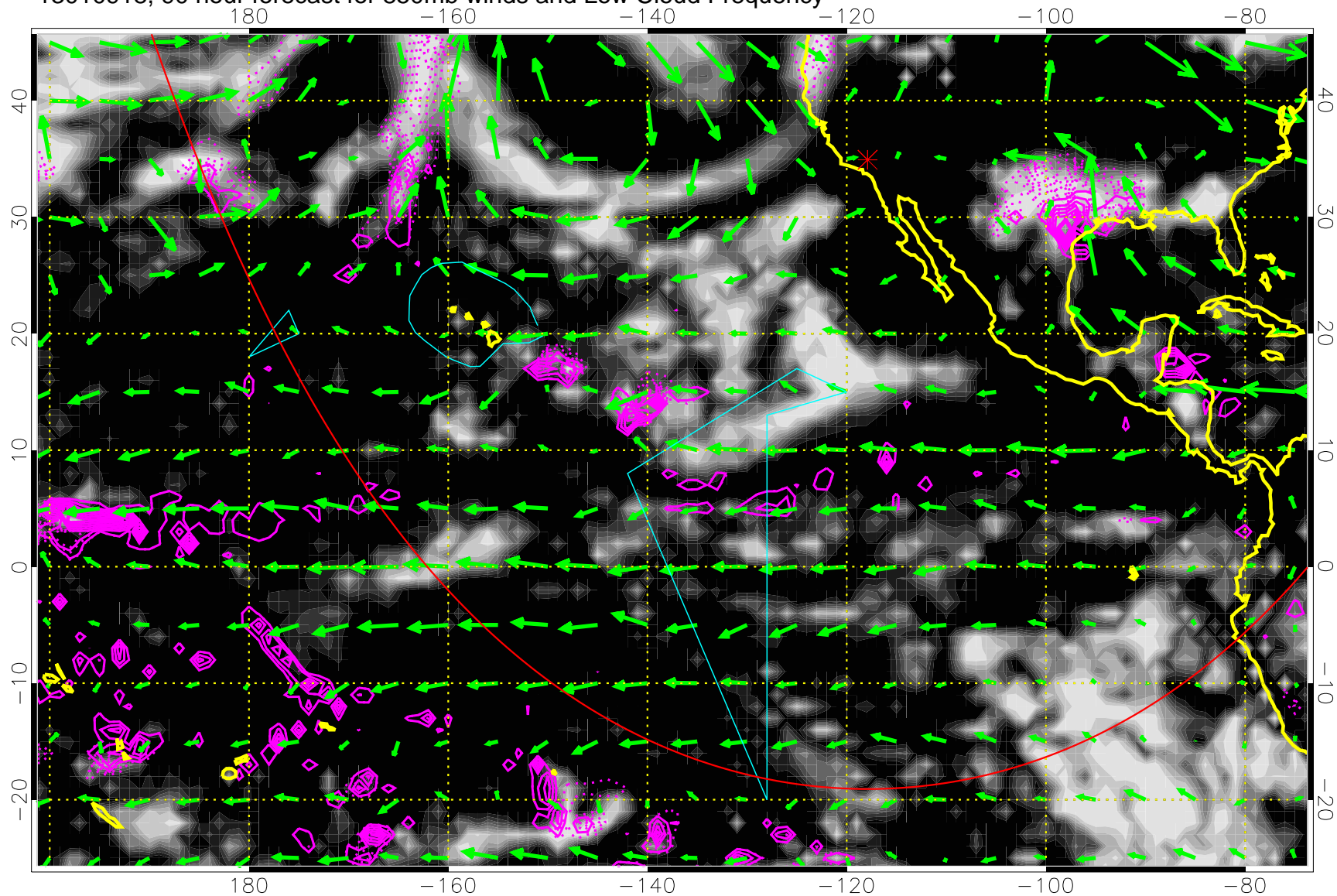
13010912, 84 hour forecast for 850mb winds and Low Cloud Frequency



Precip (tot dotted, conv solid) past 6 hours 4 kg/m<sup>2</sup> contours

→ 20 m/s  
Range ring of 6000 km -- 19 hours GH round trip

13010918, 90 hour forecast for 850mb winds and Low Cloud Frequency

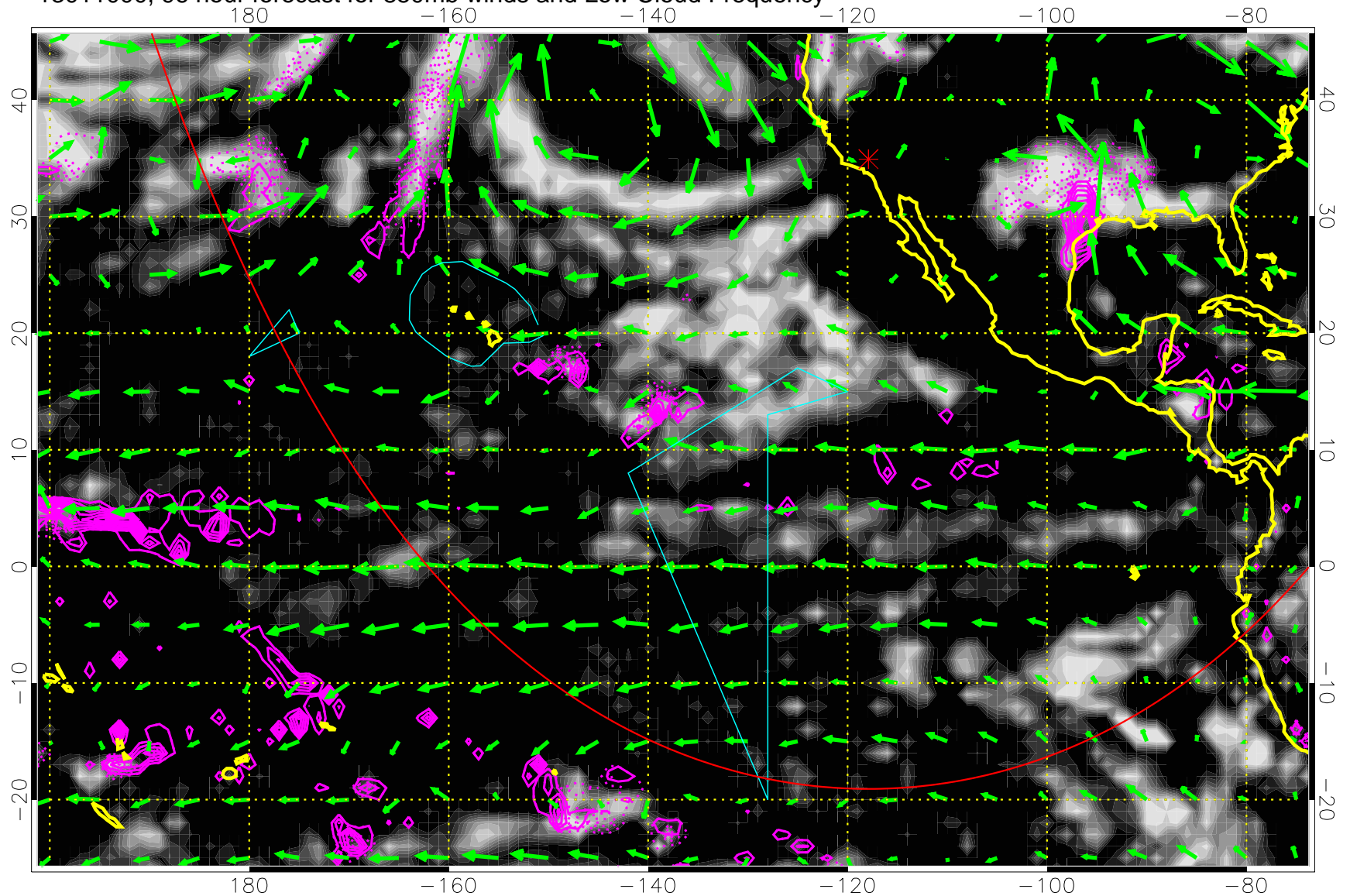


Precip (tot dotted, conv solid) past 6 hours 4 kg/m<sup>2</sup> contours

→ 20 m/s

Range ring of 6000 km -- 19 hours GH round trip

13011000, 96 hour forecast for 850mb winds and Low Cloud Frequency

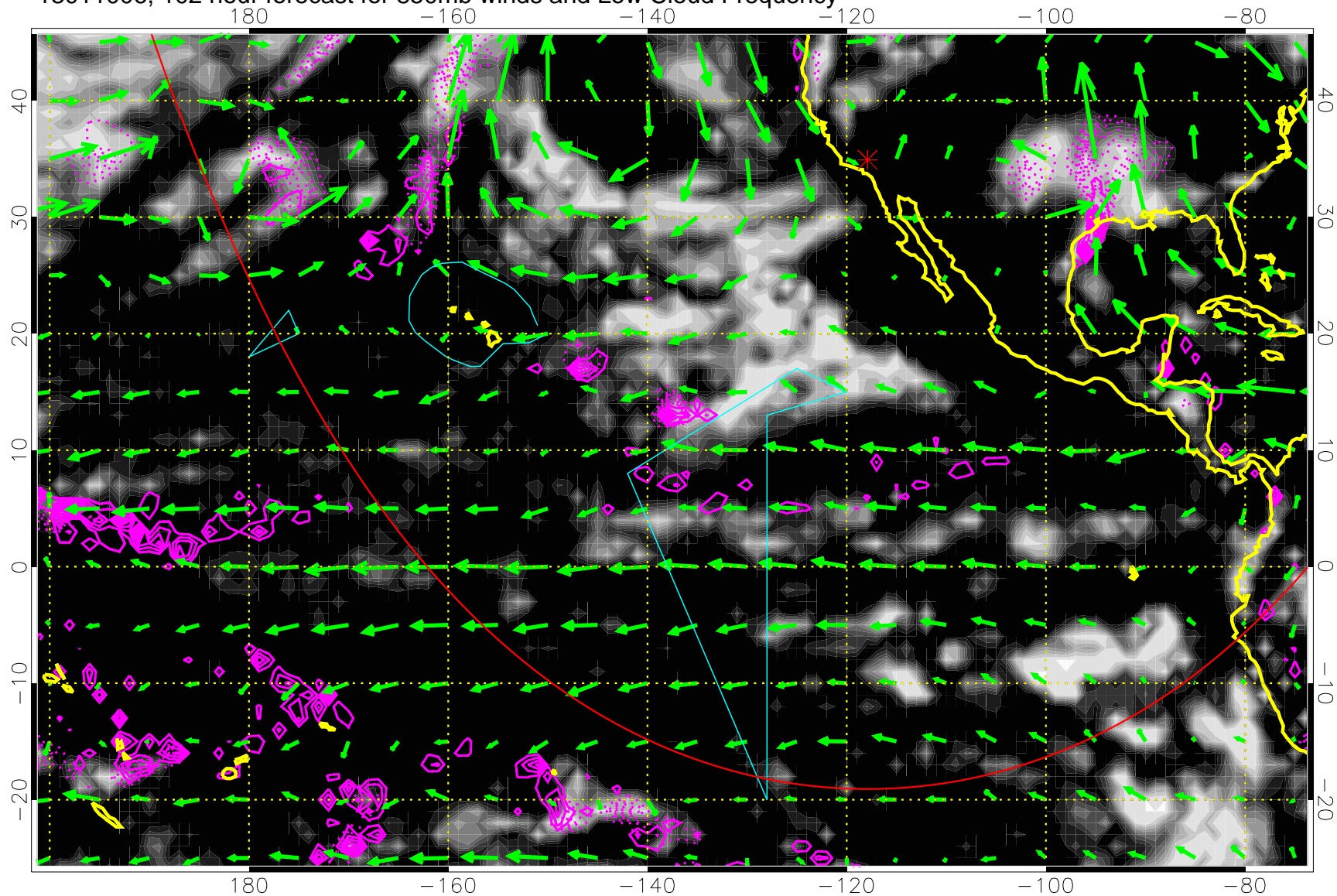


Precip (tot dotted, conv solid) past 6 hours 4 kg/m<sup>2</sup> contours

→ 20 m/s

Range ring of 6000 km -- 19 hours GH round trip

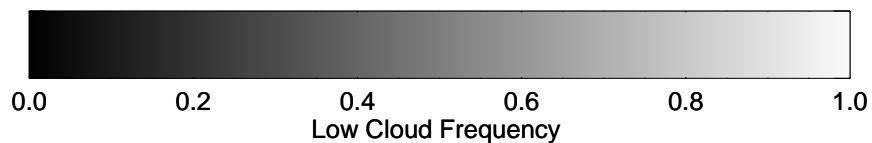
13011006, 102 hour forecast for 850mb winds and Low Cloud Frequency



Precip (tot dotted, conv solid) past 6 hours 4 kg/m<sup>2</sup> contours

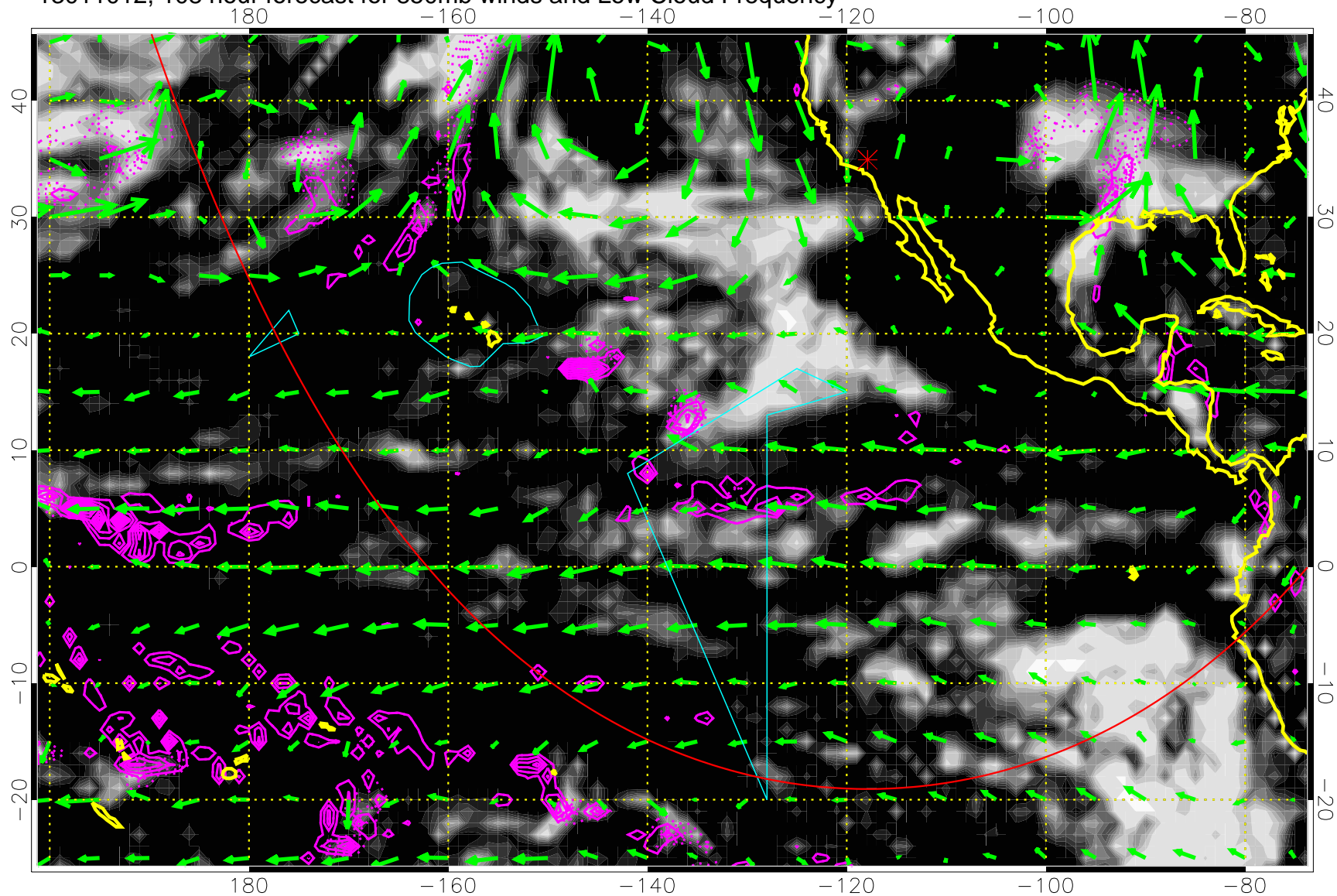
→ 20 m/s

Range ring of 6000 km -- 19 hours GH round trip





13011012, 108 hour forecast for 850mb winds and Low Cloud Frequency

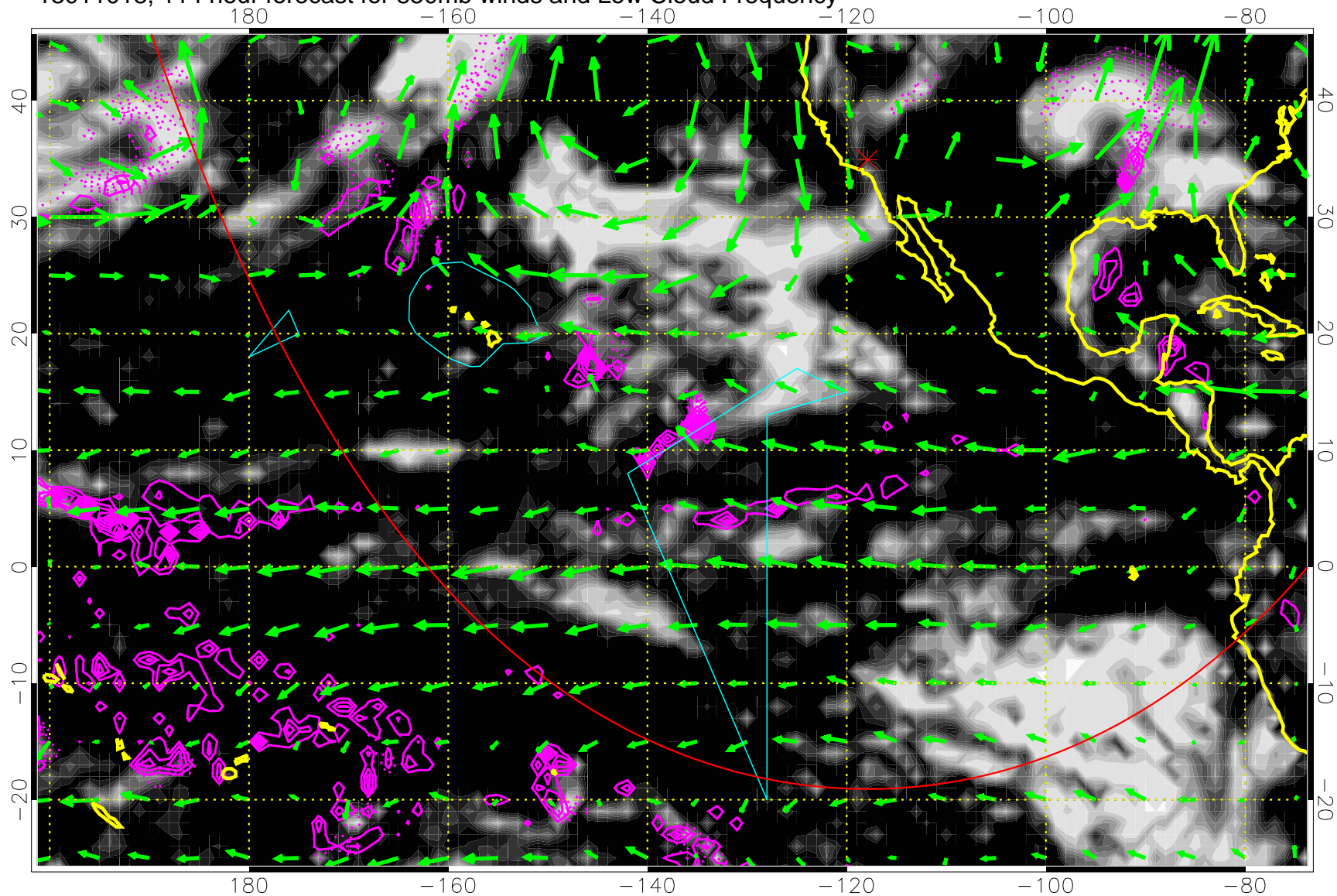


Precip (tot dotted, conv solid) past 6 hours 4 kg/m<sup>2</sup> contours

→ 20 m/s

Range ring of 6000 km -- 19 hours GH round trip

13011018, 114 hour forecast for 850mb winds and Low Cloud Frequency

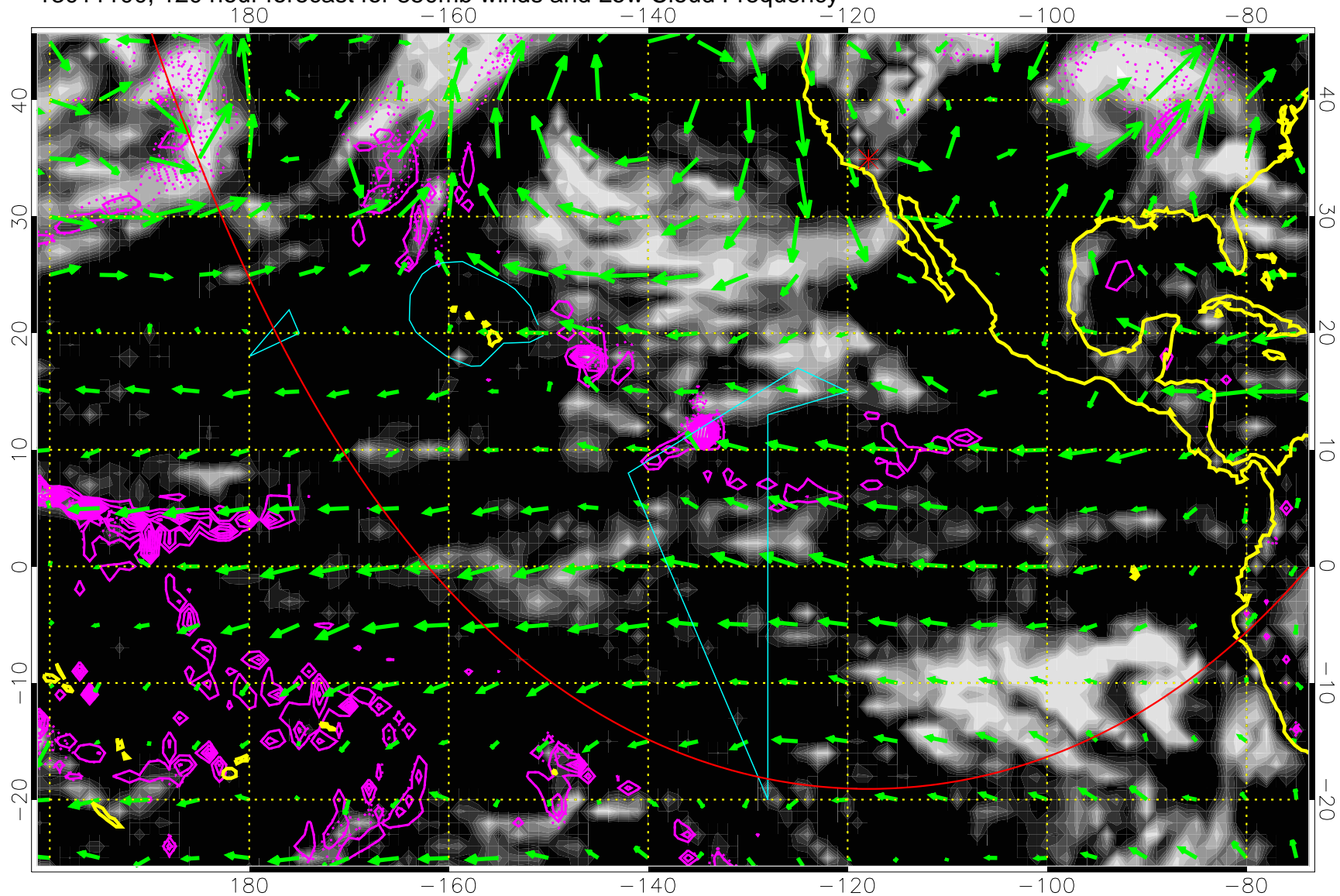


Precip (tot dotted, conv solid) past 6 hours 4 kg/m<sup>2</sup> contours

→ 20 m/s

Range ring of 6000 km -- 19 hours GH round trip

13011100, 120 hour forecast for 850mb winds and Low Cloud Frequency



Precip (tot dotted, conv solid) past 6 hours 4 kg/m<sup>2</sup> contours

→ 20 m/s  
Range ring of 6000 km -- 19 hours GH round trip