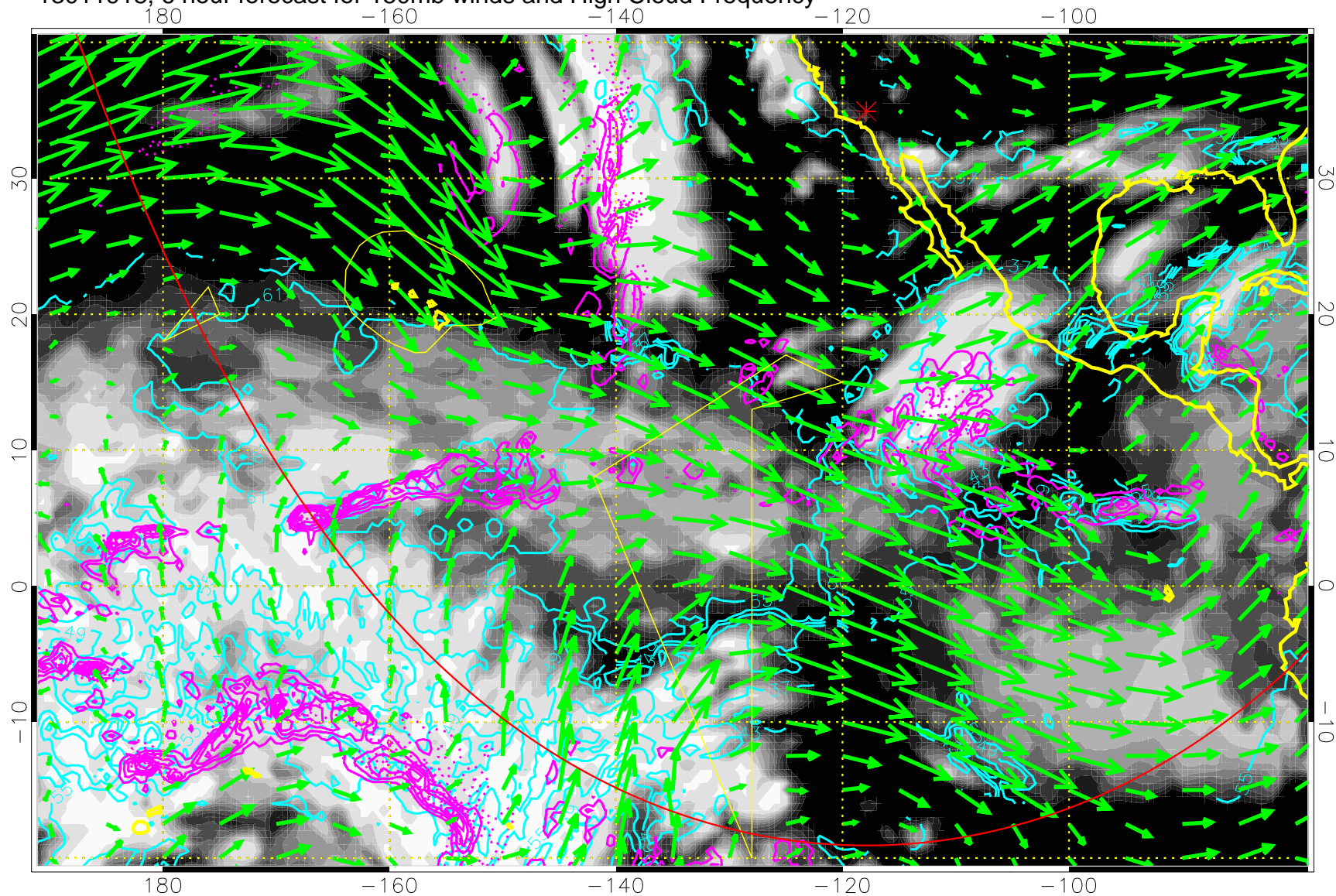


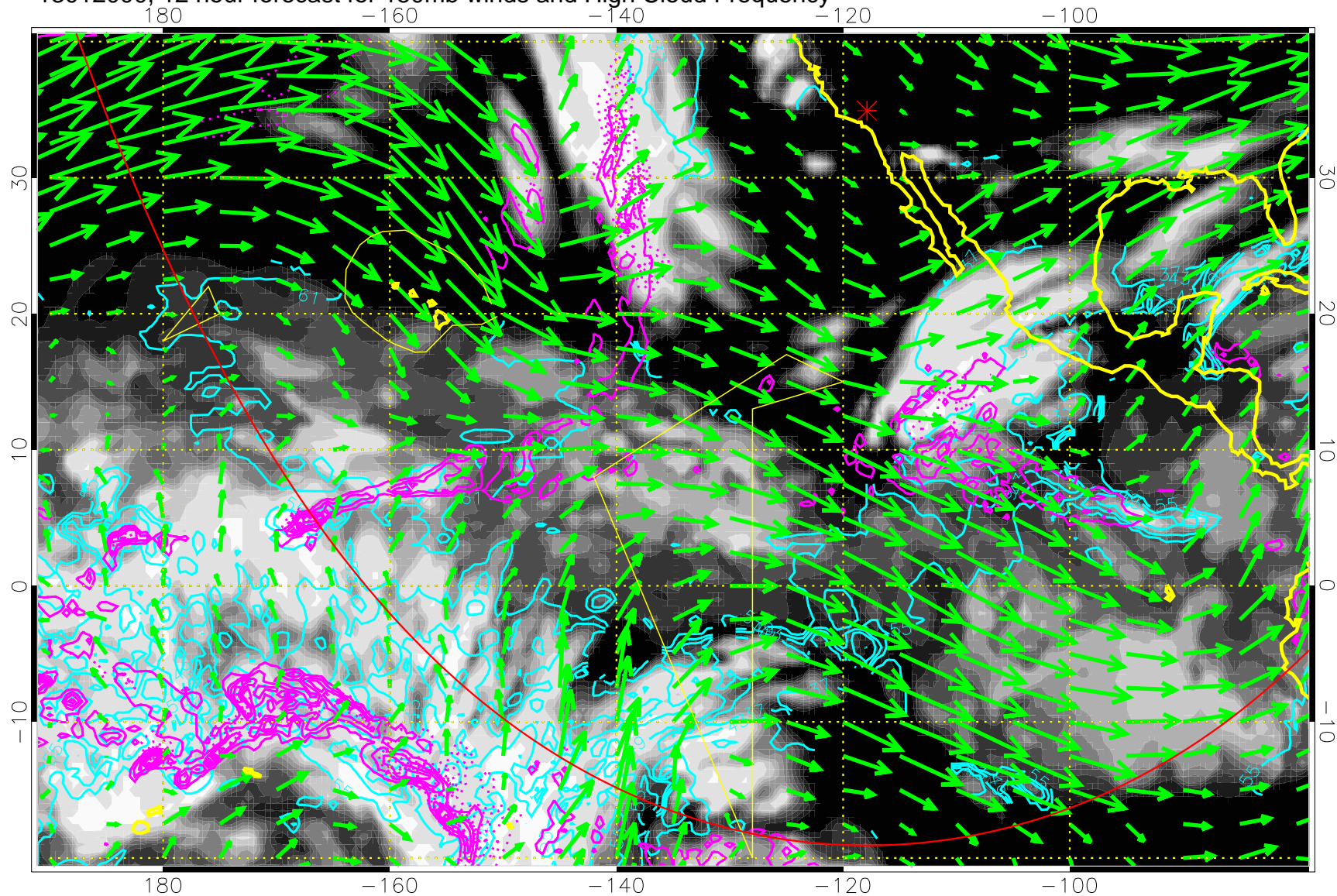
13011918, 6 hour forecast for 150mb winds and High Cloud Frequency



High Cloud Altitude from 37 kft at 6 kft intervals  
Precip (tot dot, conv sol) past 6 hrs 6 kg/m2 contours, min 4

→ 50 m/s  
Range ring of 6000 km -- 19 hours GH round trip

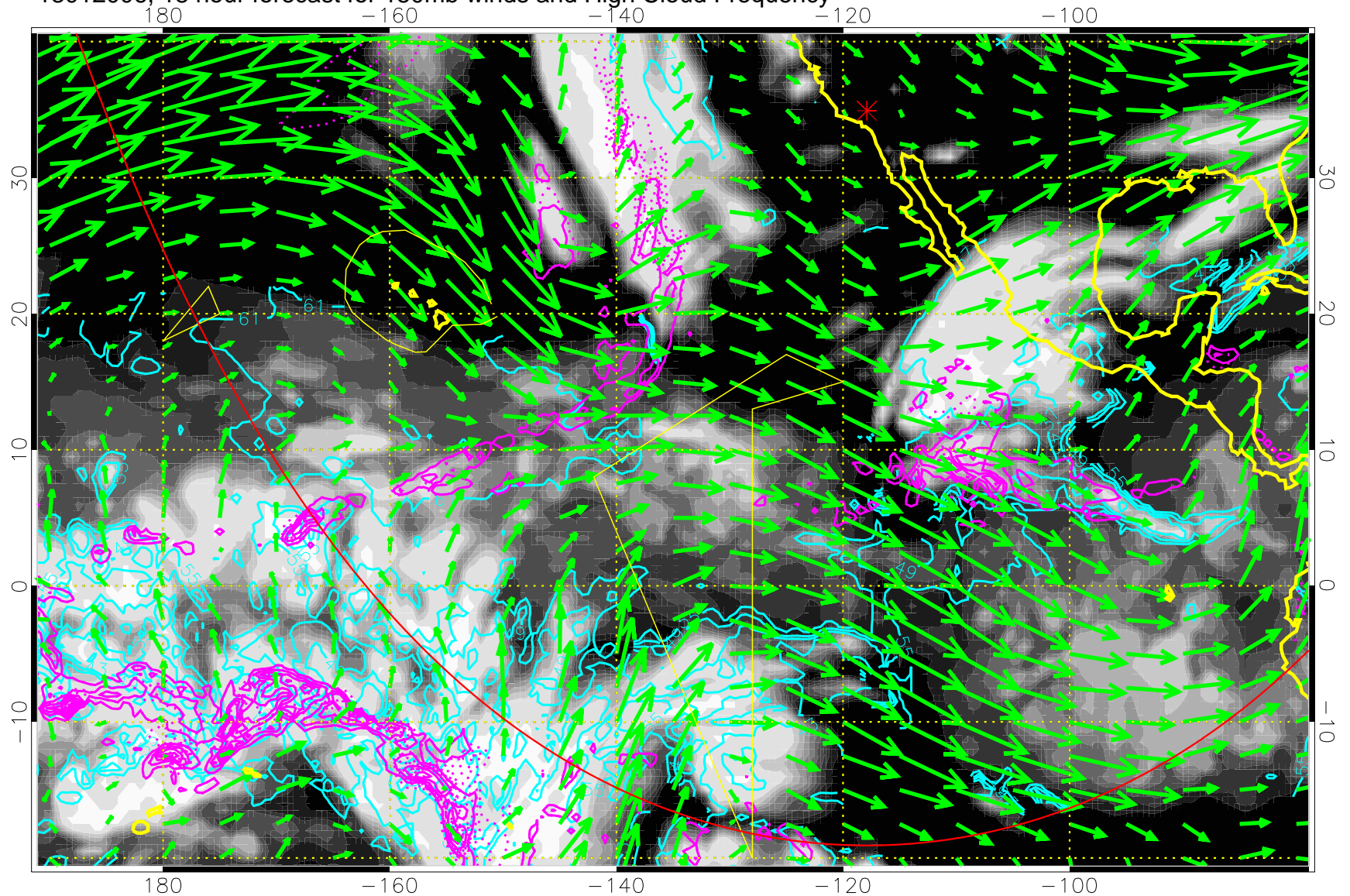
13012000, 12 hour forecast for 150mb winds and High Cloud Frequency



High Cloud Altitude from 37 kft at 6 kft intervals  
Precip (tot dot, conv sol) past 6 hrs 6 kg/m<sup>2</sup> contours, min 4

→ 50 m/s  
Range ring of 6000 km -- 19 hours GH round trip

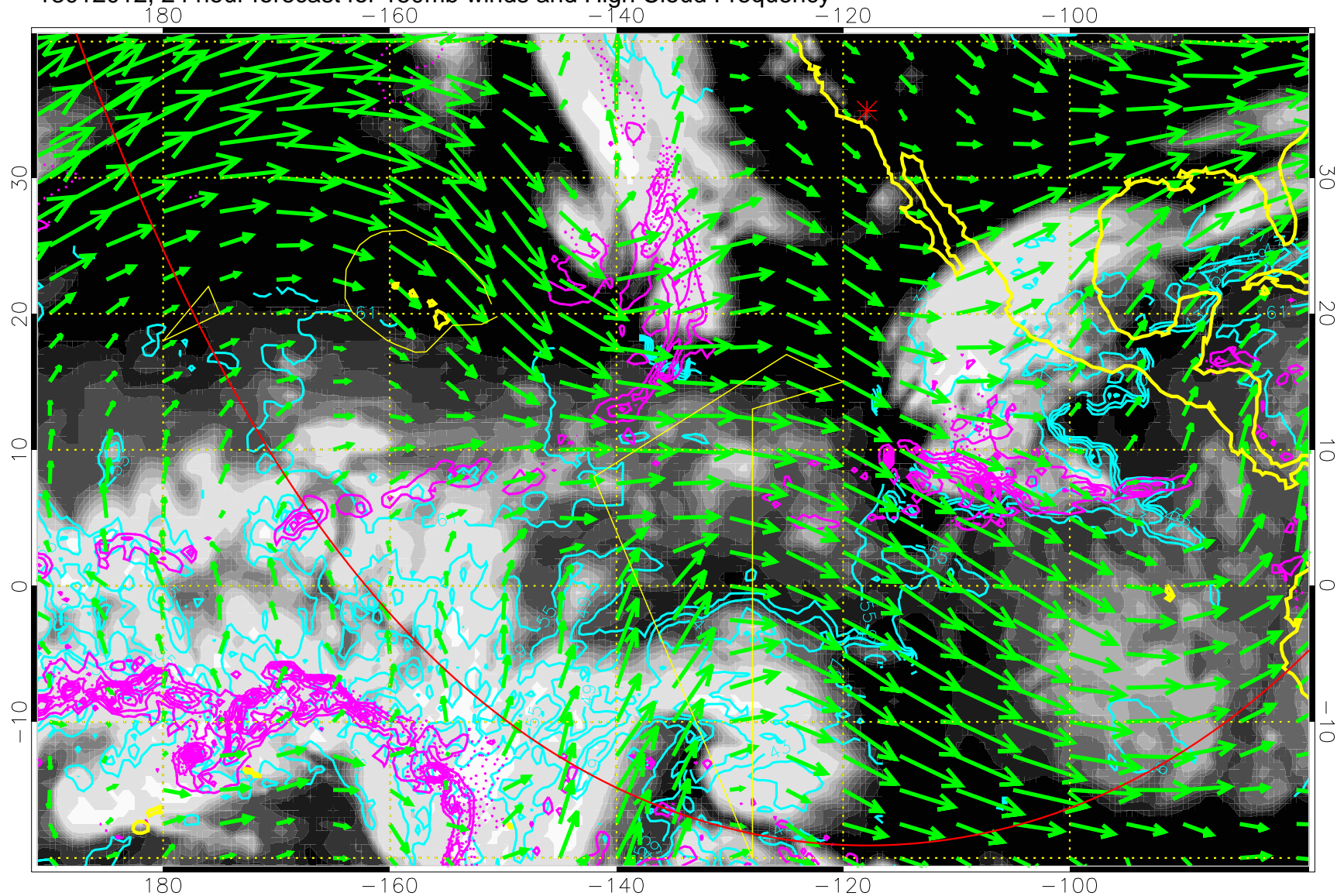
13012006, 18 hour forecast for 150mb winds and High Cloud Frequency



High Cloud Altitude from 37 kft at 6 kft intervals  
Precip (tot dot, conv sol) past 6 hrs 6 kg/m2 contours, min 4

→ 50 m/s  
Range ring of 6000 km -- 19 hours GH round trip

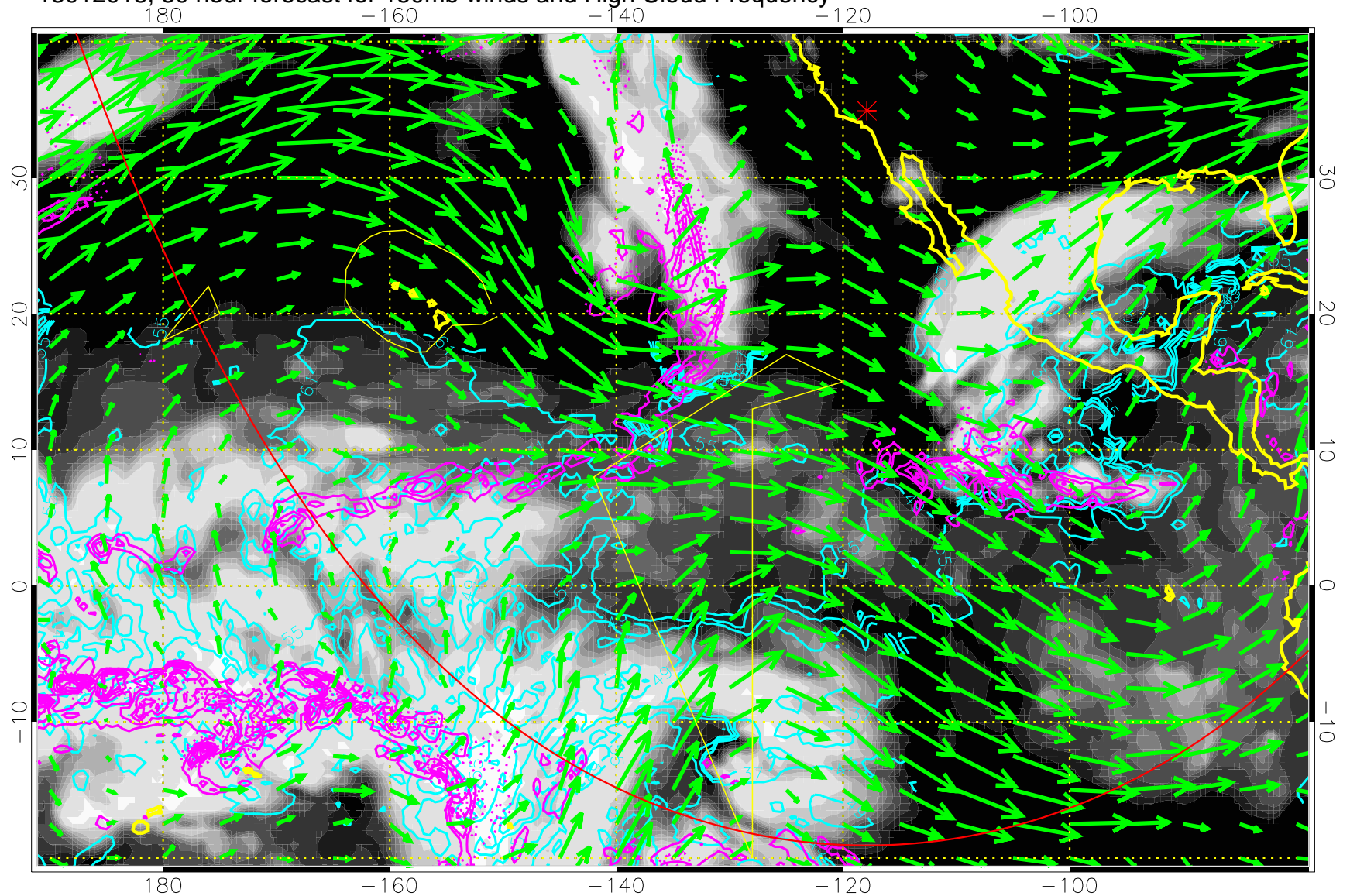
13012012, 24 hour forecast for 150mb winds and High Cloud Frequency



High Cloud Altitude from 37 kft at 6 kft intervals  
Precip (tot dot, conv sol) past 6 hrs 6 kg/m2 contours, min 4

→ 50 m/s  
Range ring of 6000 km -- 19 hours GH round trip

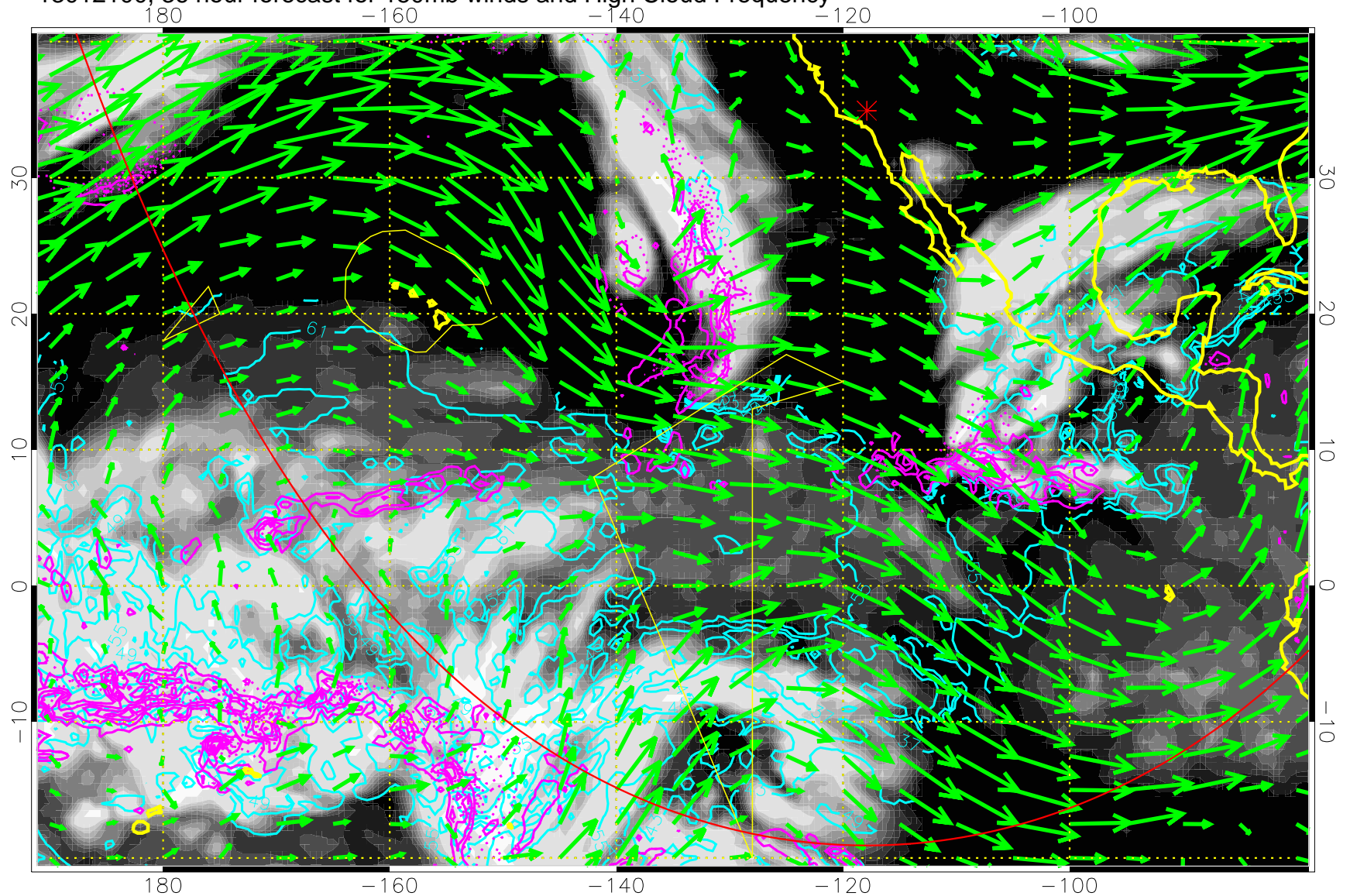
13012018, 30 hour forecast for 150mb winds and High Cloud Frequency



High Cloud Altitude from 37 kft at 6 kft intervals  
Precip (tot dot, conv sol) past 6 hrs 6 kg/m<sup>2</sup> contours, min 4

→ 50 m/s  
Range ring of 6000 km -- 19 hours GH round trip

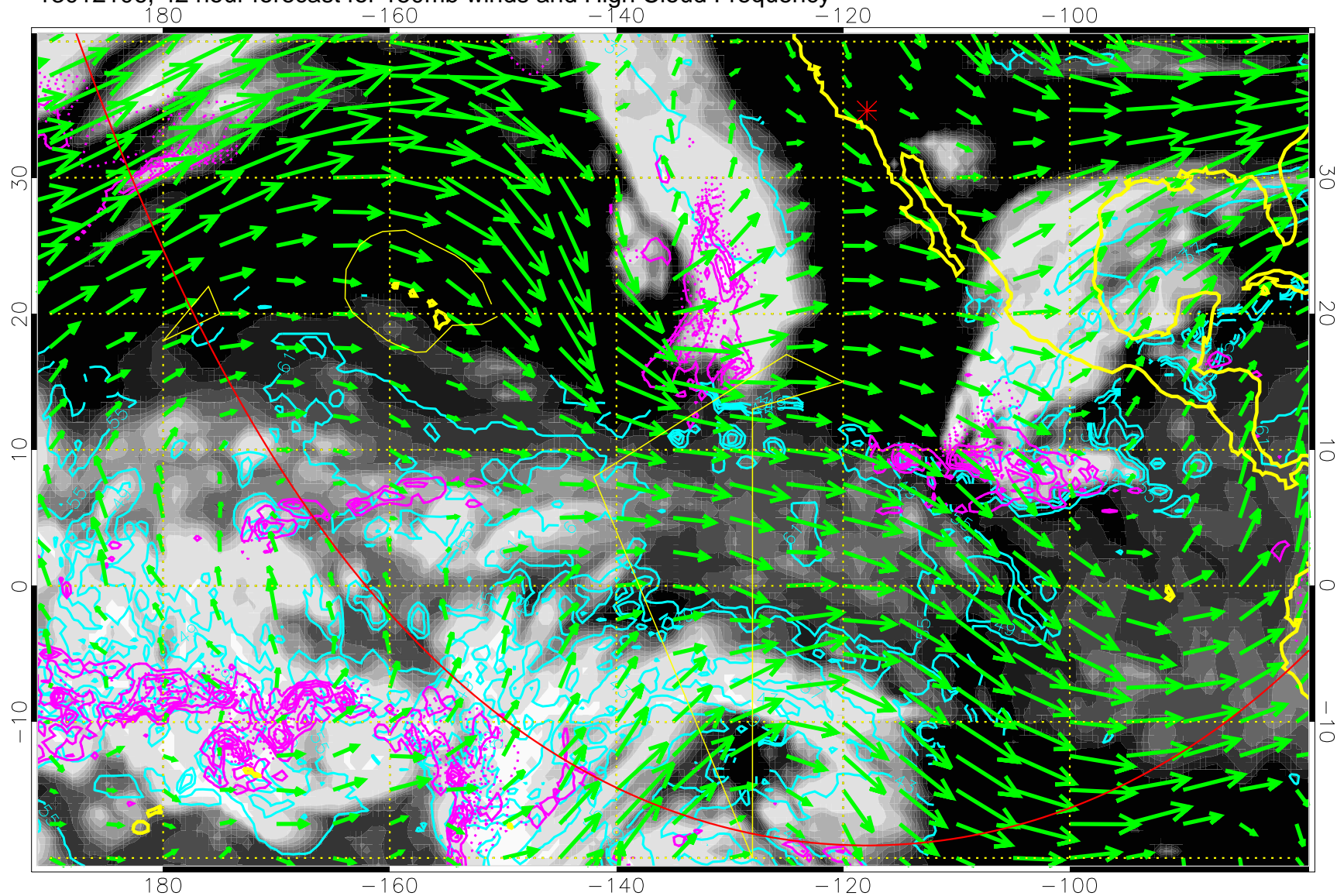
13012100, 36 hour forecast for 150mb winds and High Cloud Frequency



High Cloud Altitude from 37 kft at 6 kft intervals  
Precip (tot dot, conv sol) past 6 hrs 6 kg/m<sup>2</sup> contours, min 4

→ 50 m/s  
Range ring of 6000 km -- 19 hours GH round trip

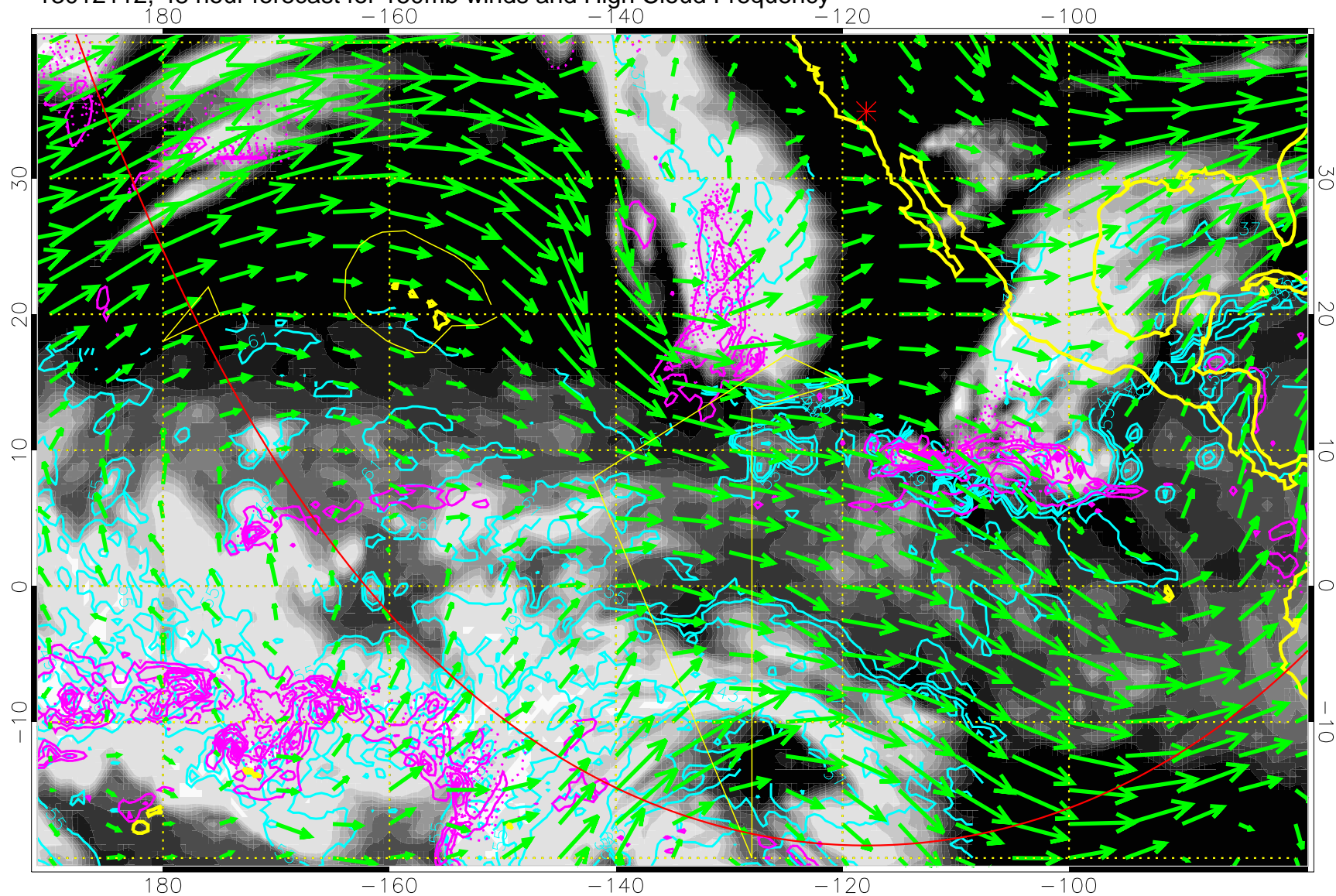
13012106, 42 hour forecast for 150mb winds and High Cloud Frequency



High Cloud Altitude from 37 kft at 6 kft intervals  
Precip (tot dot, conv sol) past 6 hrs 6 kg/m2 contours, min 4

→ 50 m/s  
Range ring of 6000 km -- 19 hours GH round trip

13012112, 48 hour forecast for 150mb winds and High Cloud Frequency

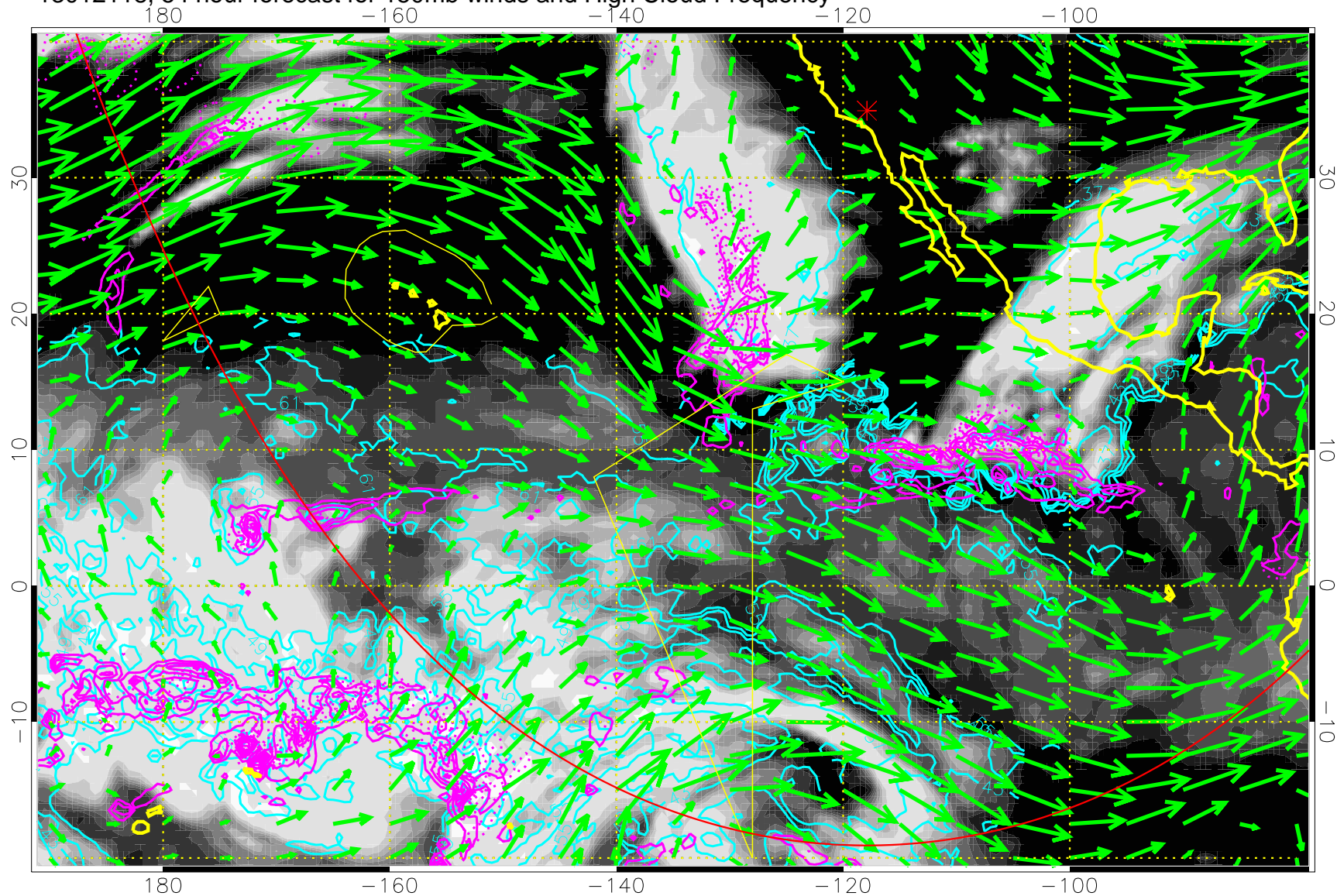


High Cloud Altitude from 37 kft at 6 kft intervals  
Precip (tot dot, conv sol) past 6 hrs 6 kg/m2 contours, min 4

→ 50 m/s  
Range ring of 6000 km -- 19 hours GH round trip



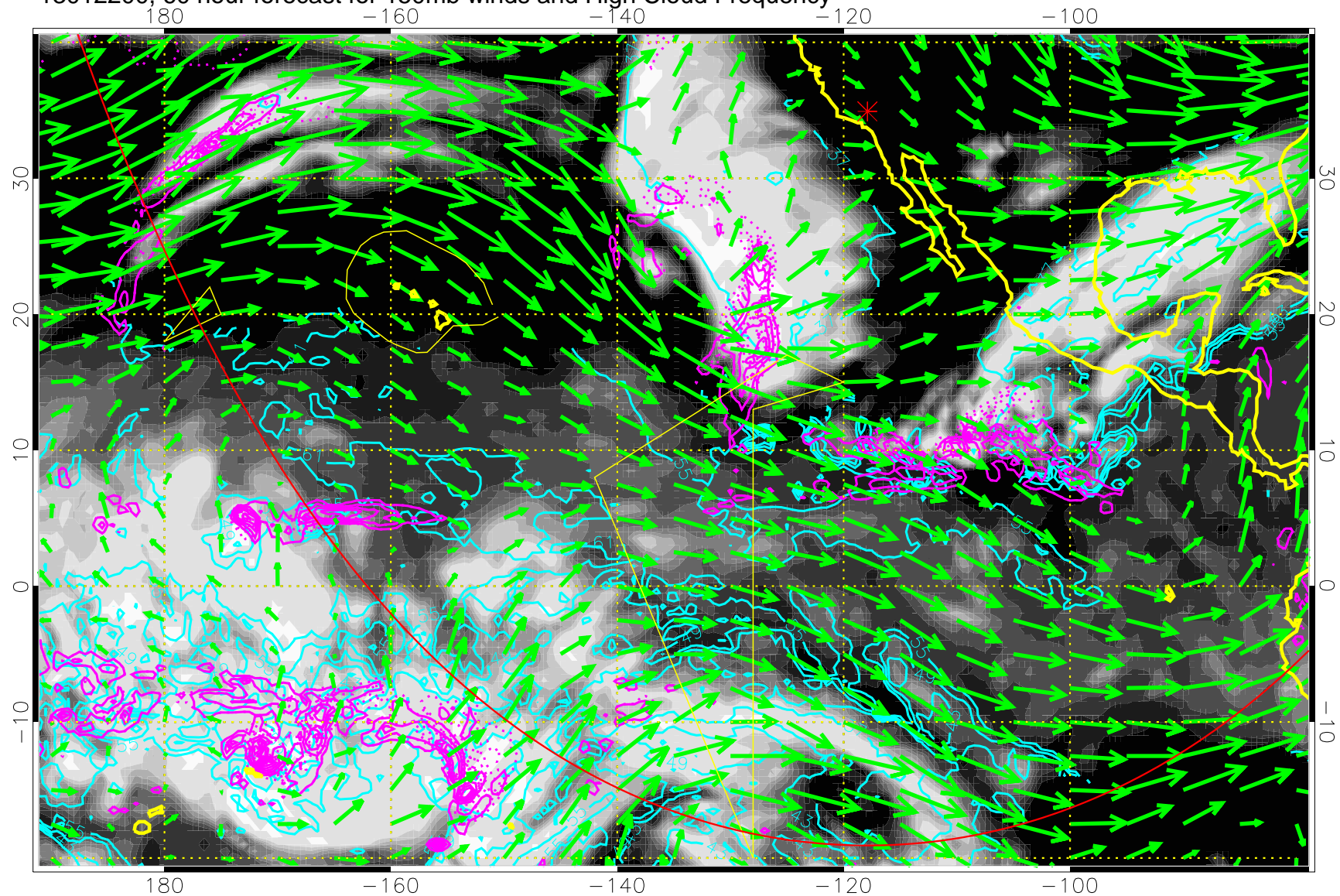
13012118, 54 hour forecast for 150mb winds and High Cloud Frequency



High Cloud Altitude from 37 kft at 6 kft intervals  
Precip (tot dot, conv sol) past 6 hrs 6 kg/m2 contours, min 4

→ 50 m/s  
Range ring of 6000 km -- 19 hours GH round trip

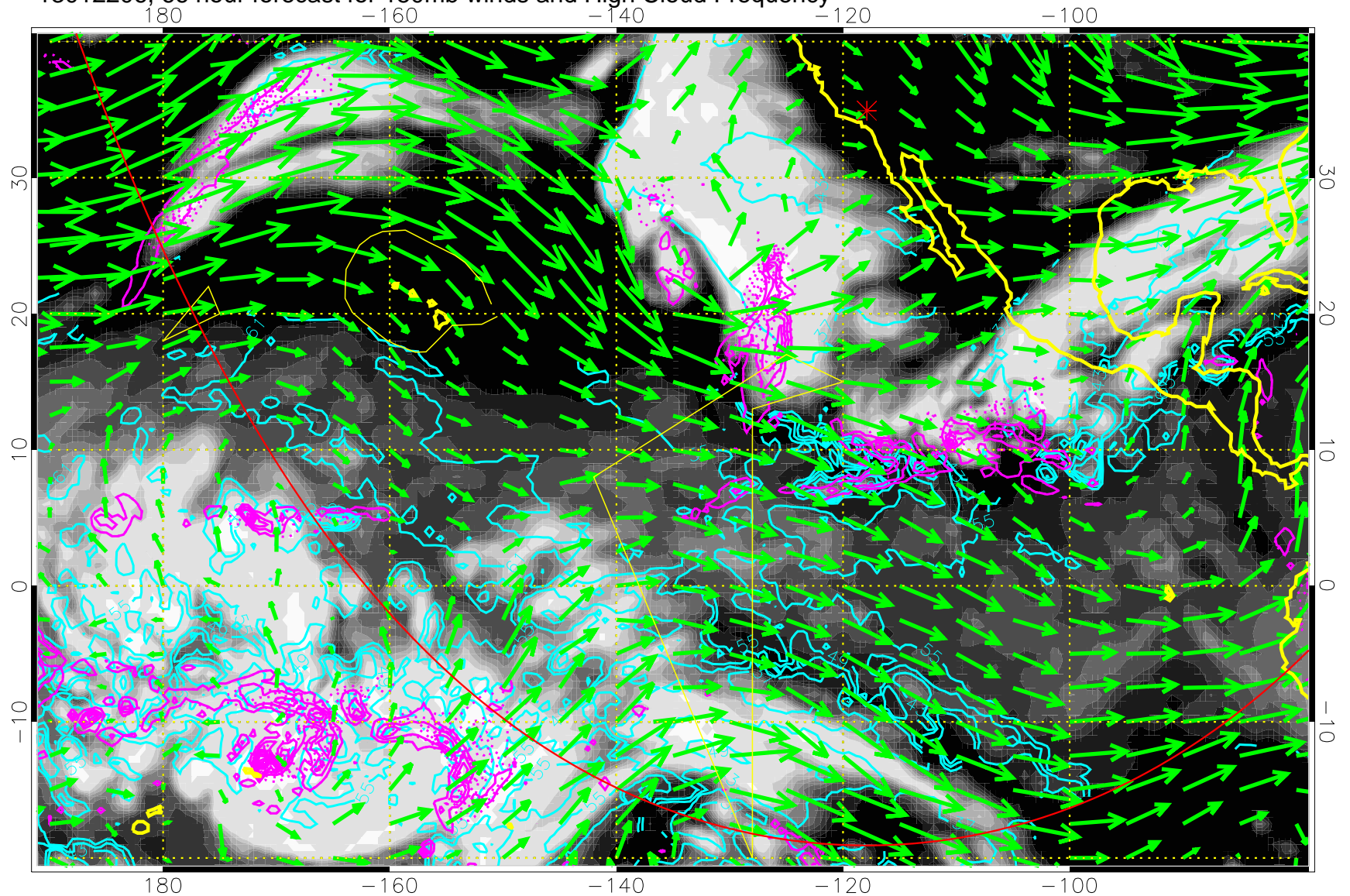
13012200, 60 hour forecast for 150mb winds and High Cloud Frequency



High Cloud Altitude from 37 kft at 6 kft intervals  
Precip (tot dot, conv sol) past 6 hrs 6 kg/m2 contours, min 4

→ 50 m/s  
Range ring of 6000 km -- 19 hours GH round trip

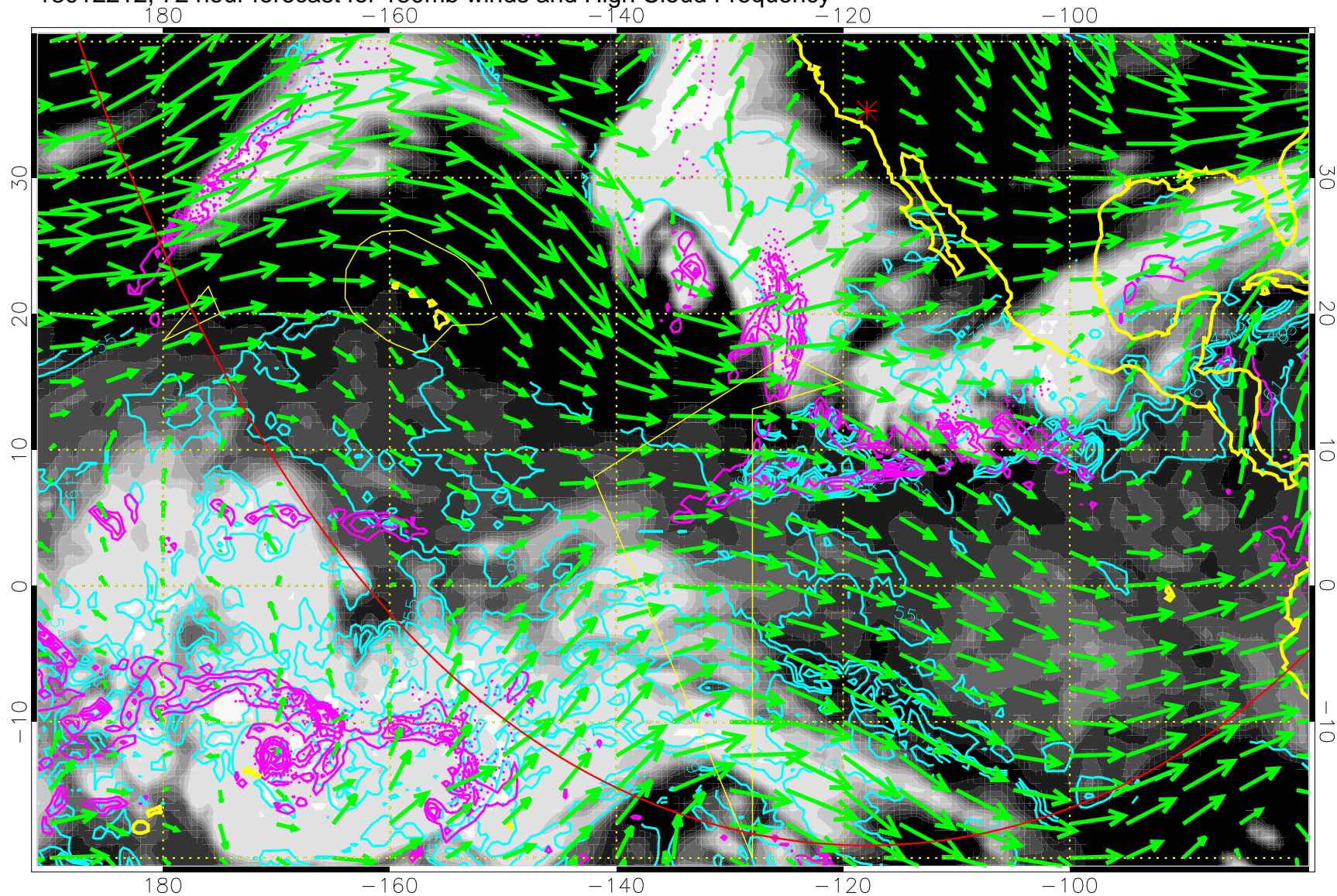
13012206, 66 hour forecast for 150mb winds and High Cloud Frequency



High Cloud Altitude from 37 kft at 6 kft intervals  
Precip (tot dot, conv sol) past 6 hrs 6 kg/m<sup>2</sup> contours, min 4

→ 50 m/s  
Range ring of 6000 km -- 19 hours GH round trip

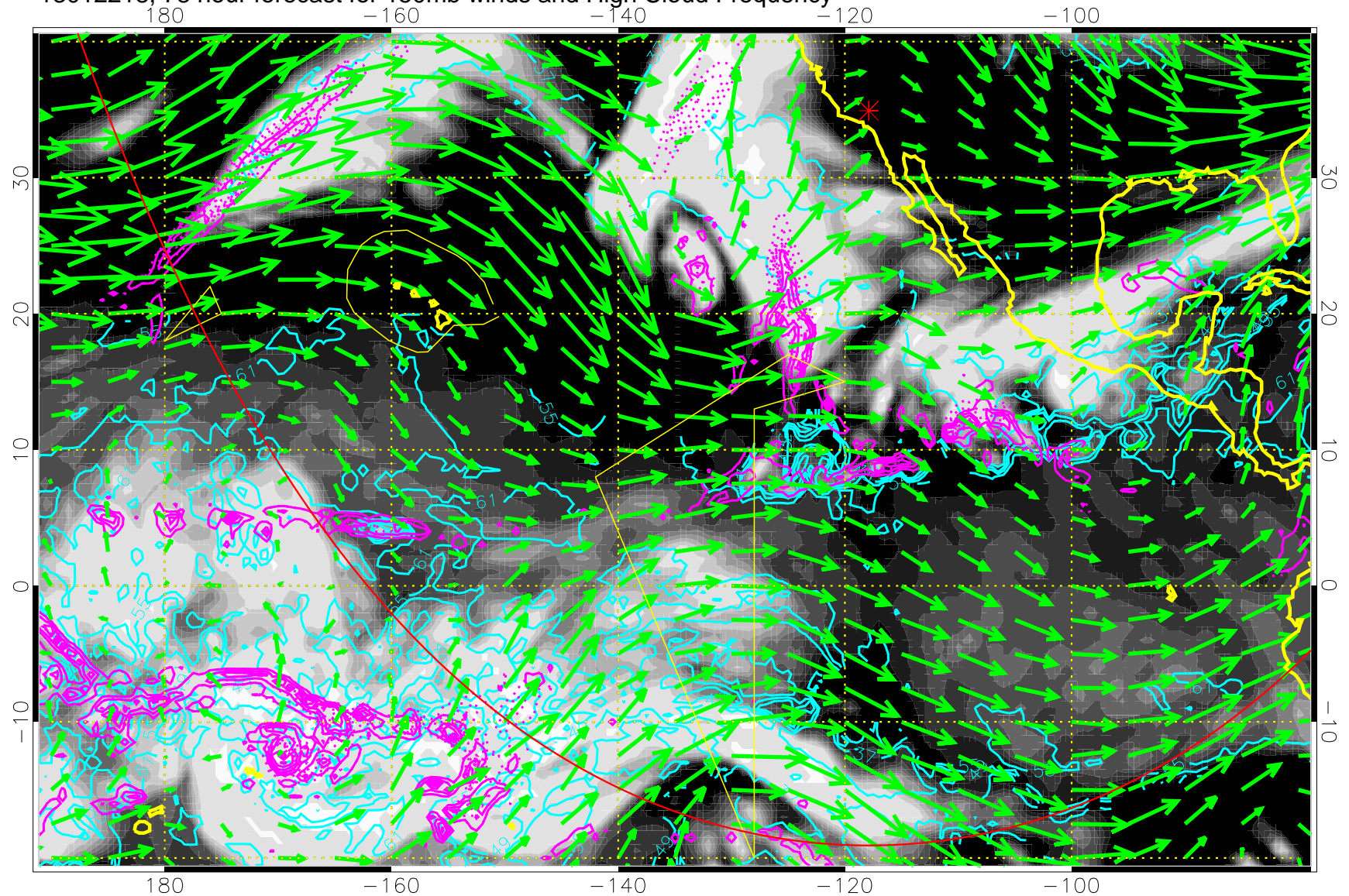
13012212, 72 hour forecast for 150mb winds and High Cloud Frequency



High Cloud Altitude from 37 kft at 6 kft intervals  
Precip (tot dot, conv sol) past 6 hrs 6 kg/m2 contours, min 4

→ 50 m/s  
Range ring of 6000 km -- 19 hours GH round trip

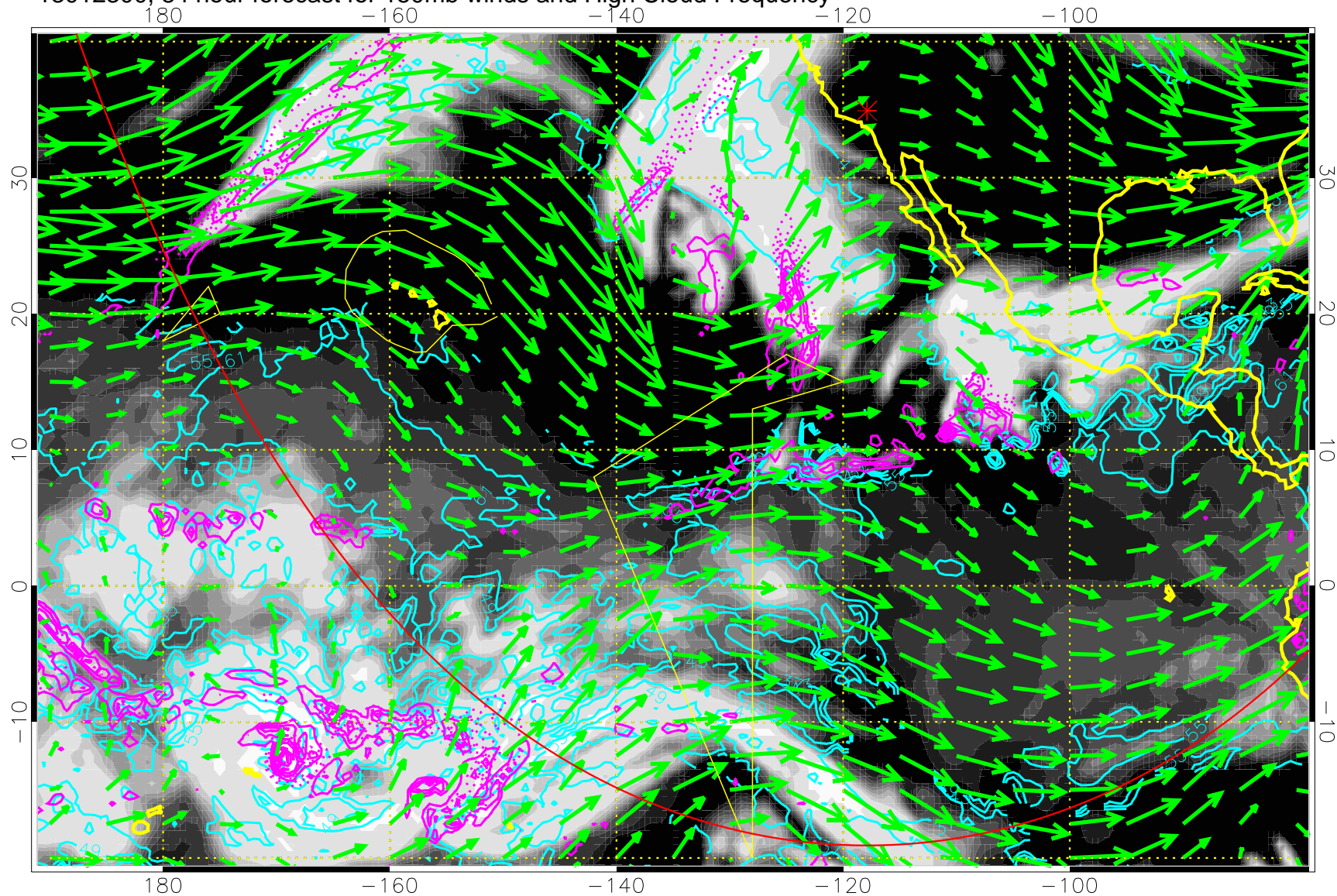
13012218, 78 hour forecast for 150mb winds and High Cloud Frequency



High Cloud Altitude from 37 kft at 6 kft intervals  
Precip (tot dot, conv sol) past 6 hrs 6 kg/m2 contours, min 4

→ 50 m/s  
Range ring of 6000 km -- 19 hours GH round trip

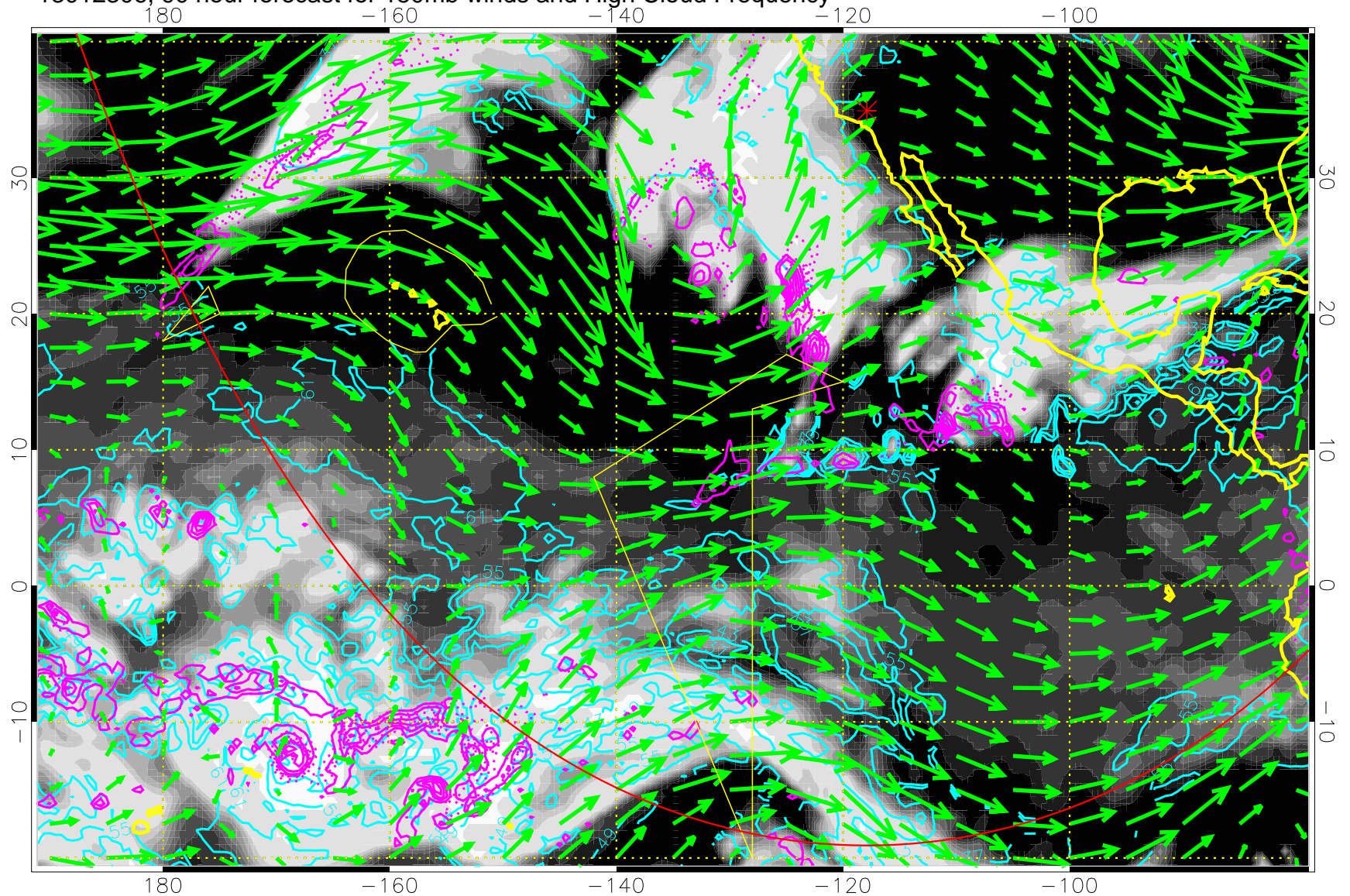
13012300, 84 hour forecast for 150mb winds and High Cloud Frequency



High Cloud Altitude from 37 kft at 6 kft intervals  
Precip (tot dot, conv sol) past 6 hrs 6 kg/m2 contours, min 4

→ 50 m/s  
Range ring of 6000 km -- 19 hours GH round trip

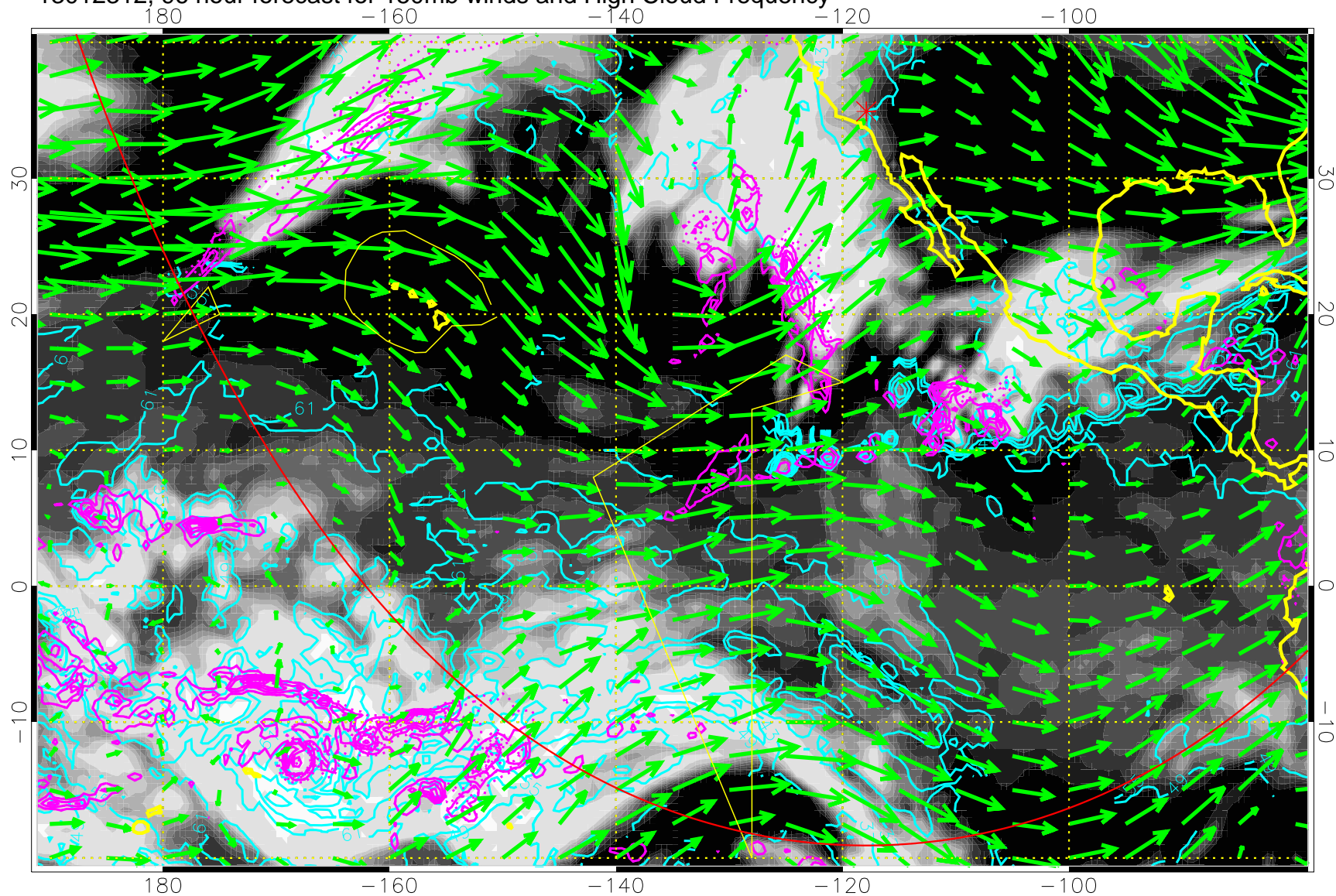
13012306, 90 hour forecast for 150mb winds and High Cloud Frequency



High Cloud Altitude from 37 kft at 6 kft intervals  
Precip (tot dot, conv sol) past 6 hrs 6 kg/m2 contours, min 4

→ 50 m/s  
Range ring of 6000 km -- 19 hours GH round trip

13012312, 96 hour forecast for 150mb winds and High Cloud Frequency

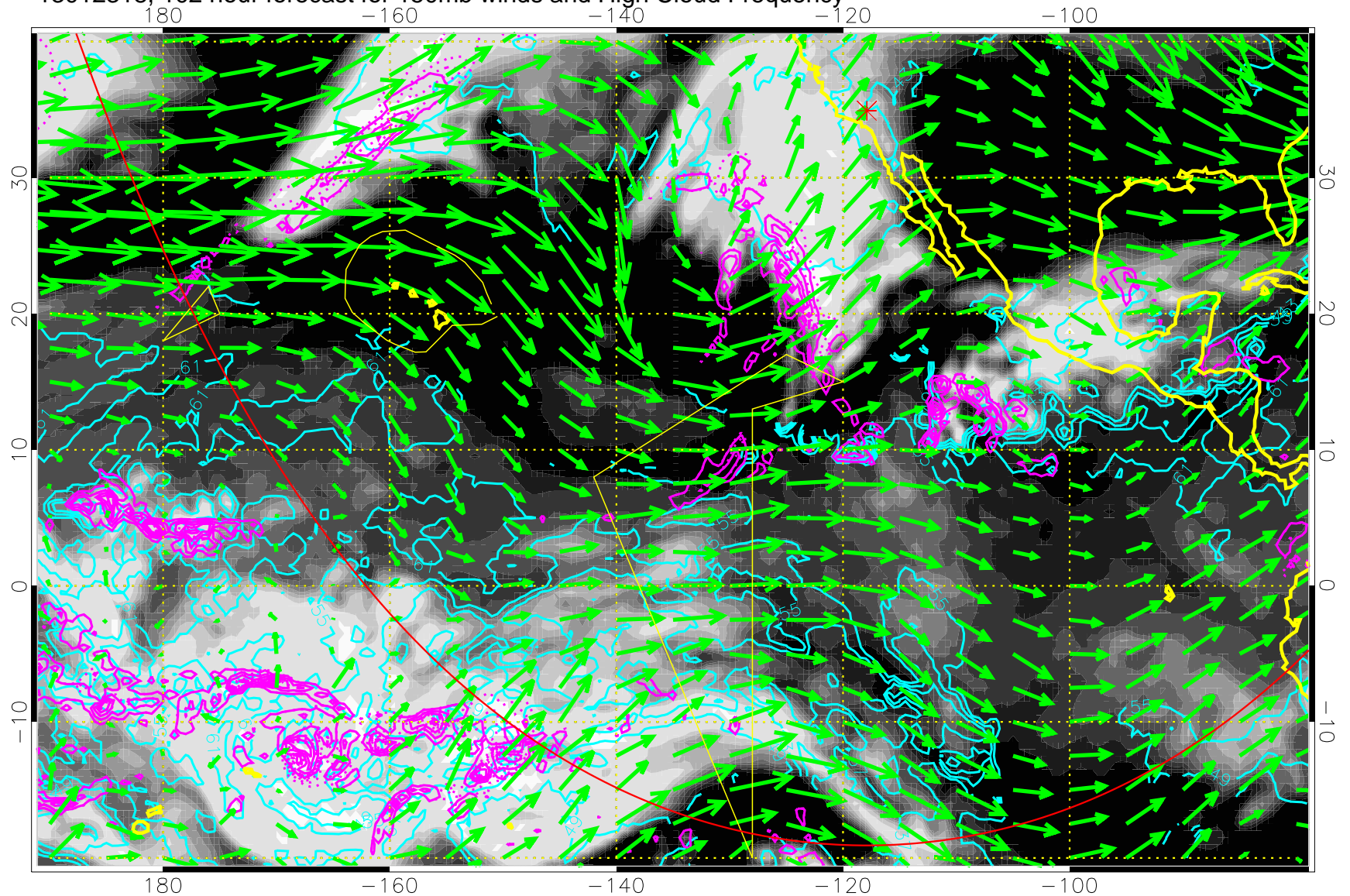


High Cloud Altitude from 37 kft at 6 kft intervals  
Precip (tot dot, conv sol) past 6 hrs 6 kg/m2 contours, min 4

→ 50 m/s  
Range ring of 6000 km -- 19 hours GH round trip



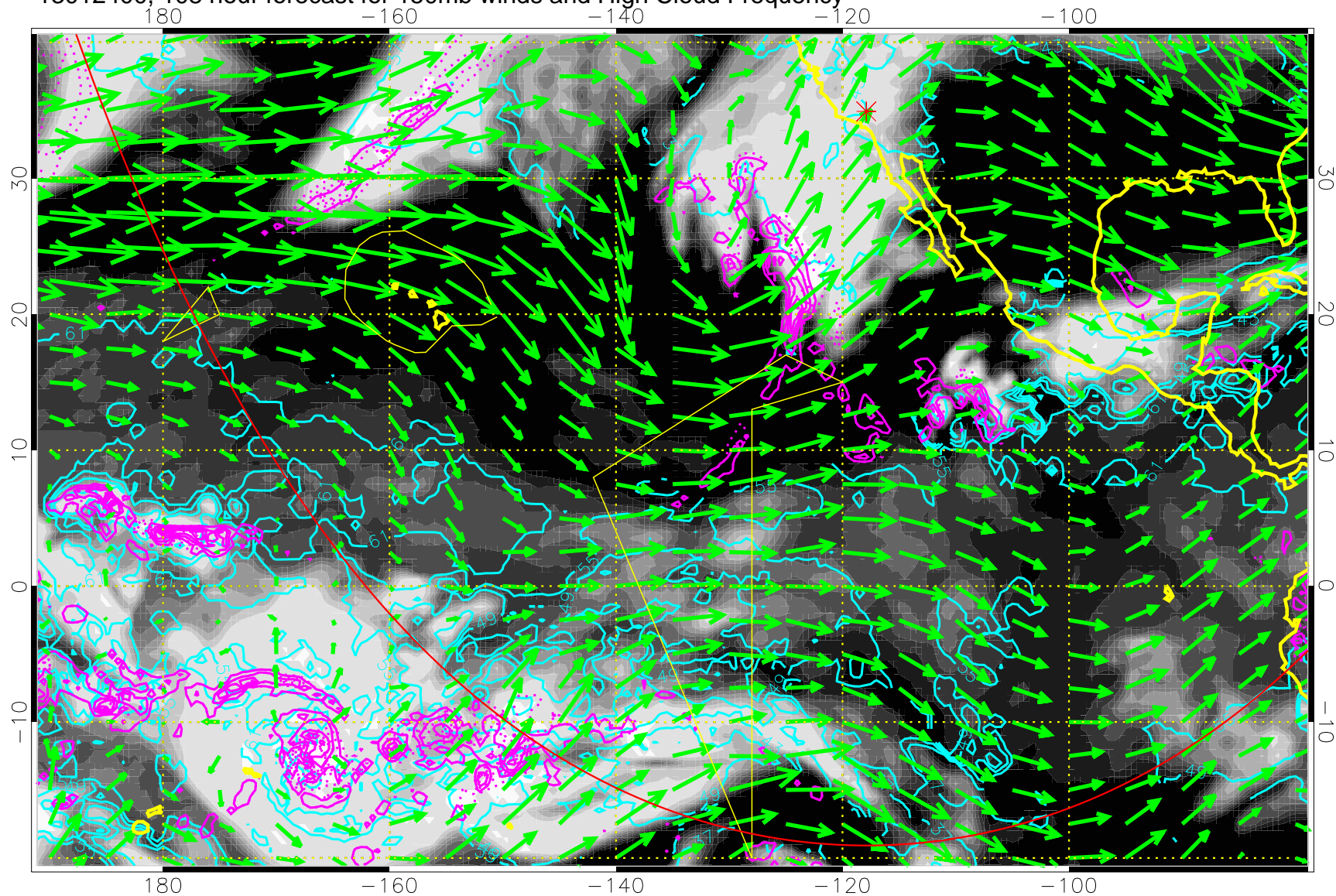
13012318, 102 hour forecast for 150mb winds and High Cloud Frequency



High Cloud Altitude from 37 kft at 6 kft intervals  
Precip (tot dot, conv sol) past 6 hrs 6 kg/m2 contours, min 4

→ 50 m/s  
Range ring of 6000 km -- 19 hours GH round trip

13012400, 108 hour forecast for 150mb winds and High Cloud Frequency

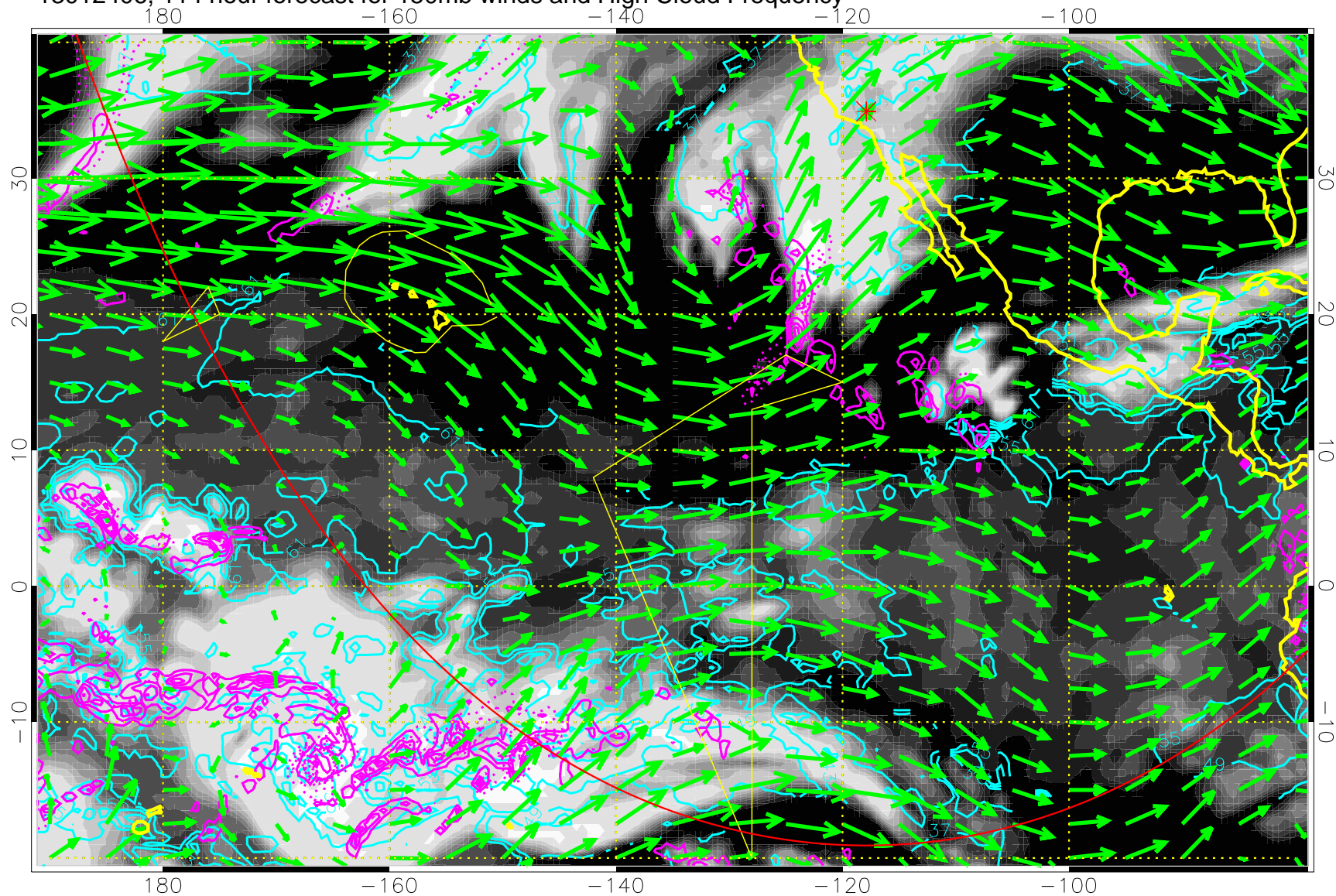


High Cloud Altitude from 37 kft at 6 kft intervals  
Precip (tot dot, conv sol) past 6 hrs 6 kg/m2 contours, min 4

→ 50 m/s

Range ring of 6000 km -- 19 hours GH round trip

13012406, 114 hour forecast for 150mb winds and High Cloud Frequency

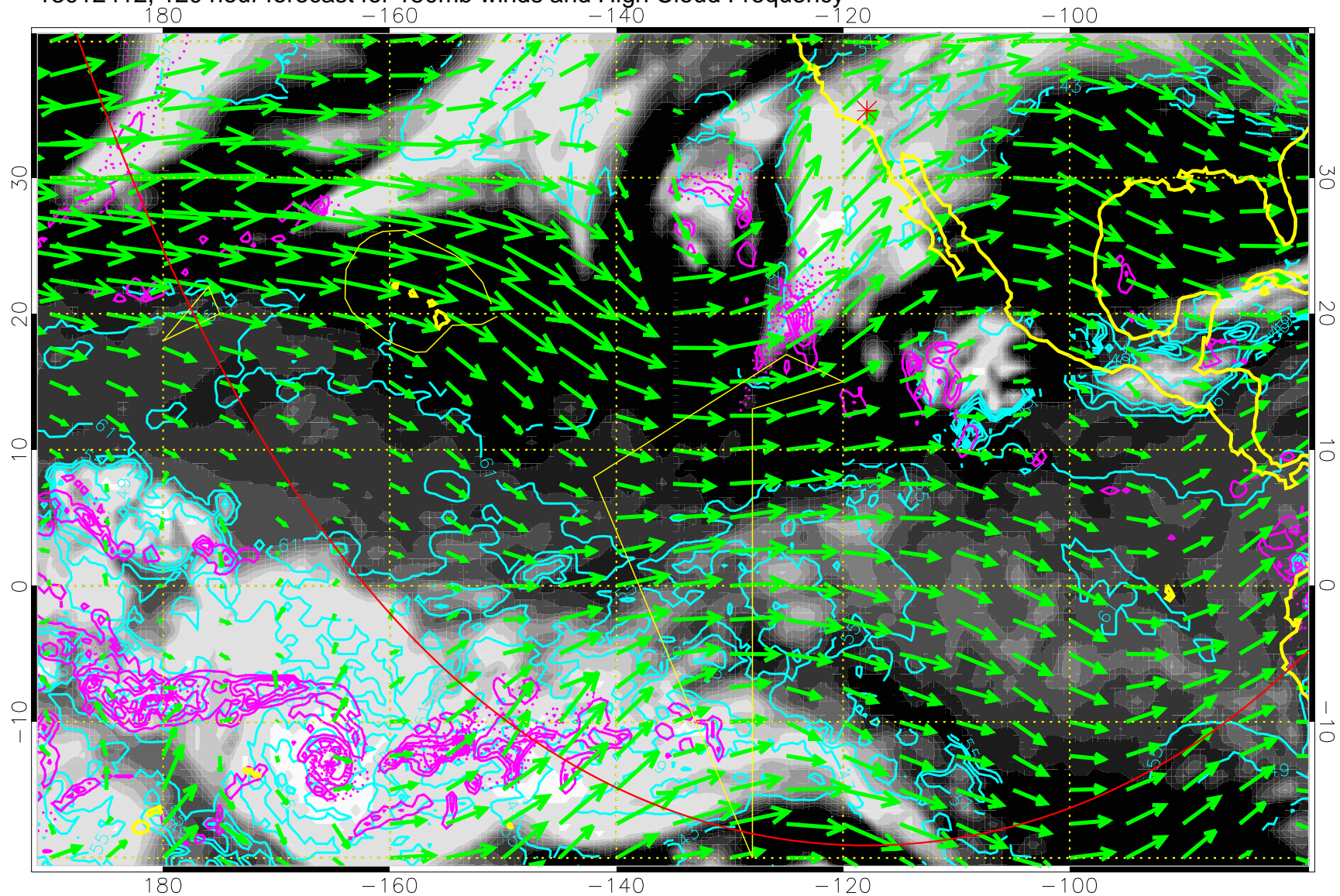


High Cloud Altitude from 37 kft at 6 kft intervals  
Precip (tot dot, conv sol) past 6 hrs 6 kg/m2 contours, min 4

→ 50 m/s

Range ring of 6000 km -- 19 hours GH round trip

13012412, 120 hour forecast for 150mb winds and High Cloud Frequency



High Cloud Altitude from 37 kft at 6 kft intervals  
Precip (tot dot, conv sol) past 6 hrs 6 kg/m2 contours, min 4

→ 50 m/s

Range ring of 6000 km -- 19 hours GH round trip