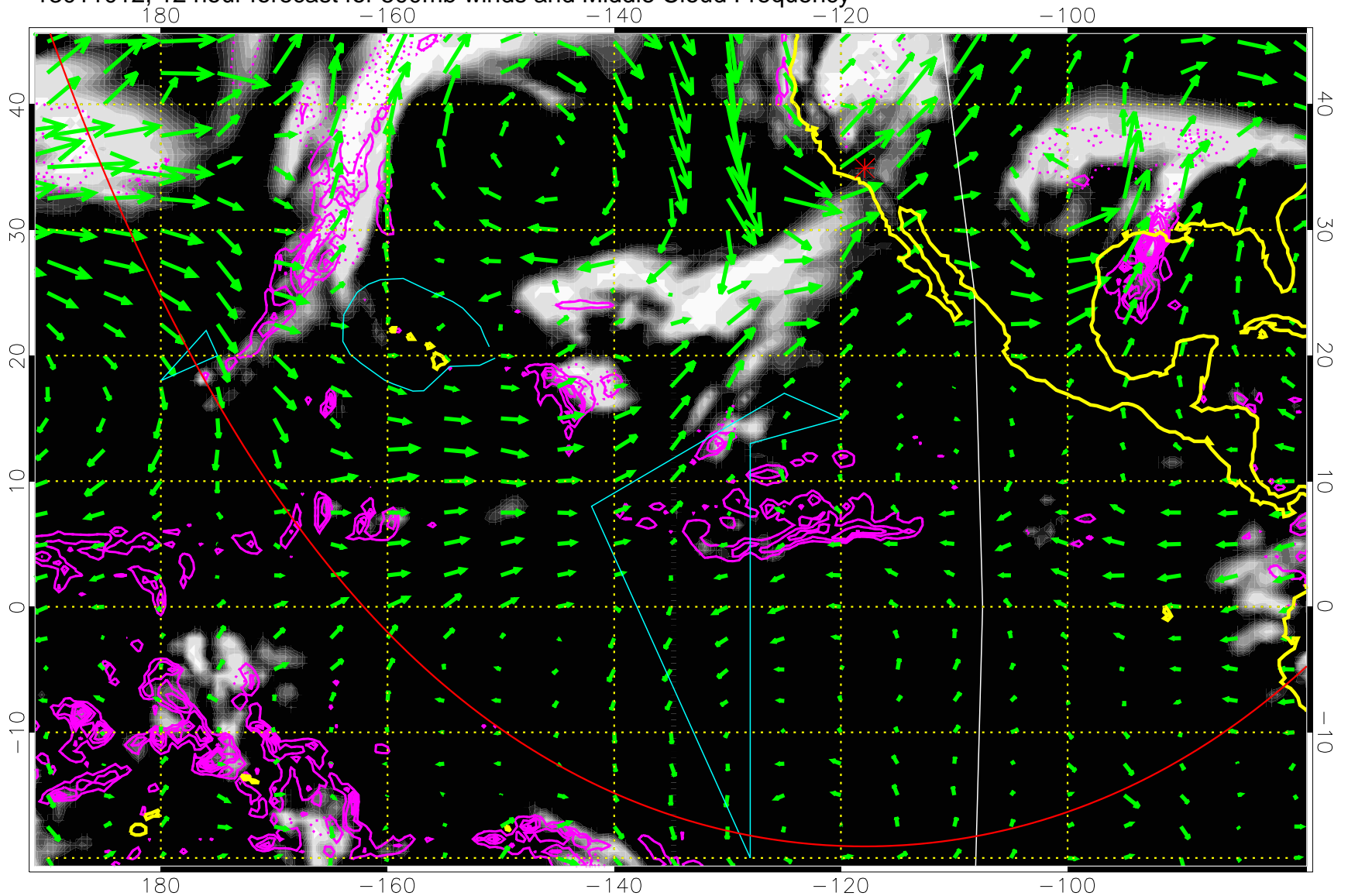


13011012, 12 hour forecast for 500mb winds and Middle Cloud Frequency



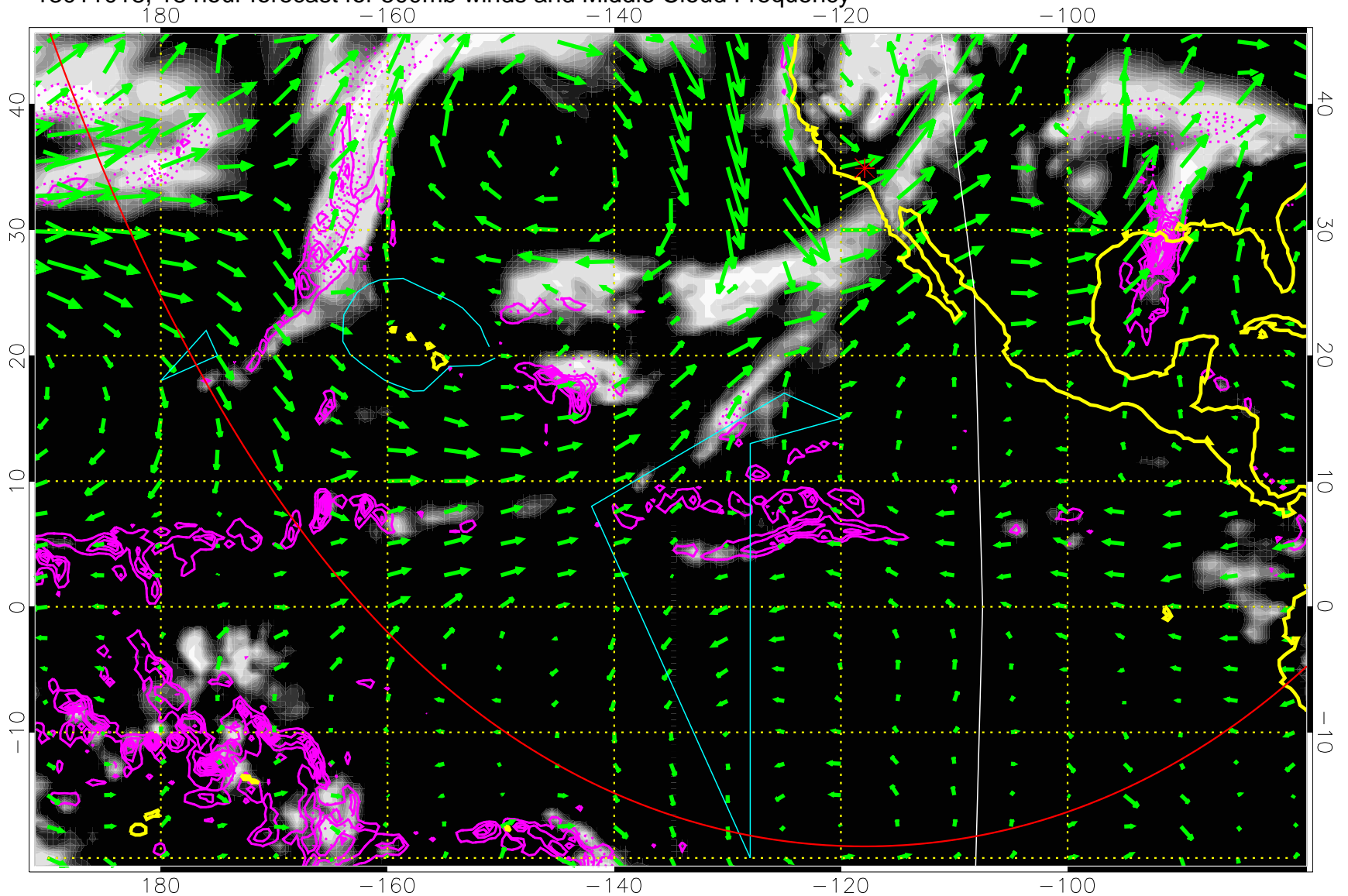
Middle Cloud Frequency

Precip (tot dot, conv sol) past 6 hrs 6 kg/m2 contours, min 4

50 m/s

Range ring of 6000 km -- 19 hours GH round trip

13011018, 18 hour forecast for 500mb winds and Middle Cloud Frequency

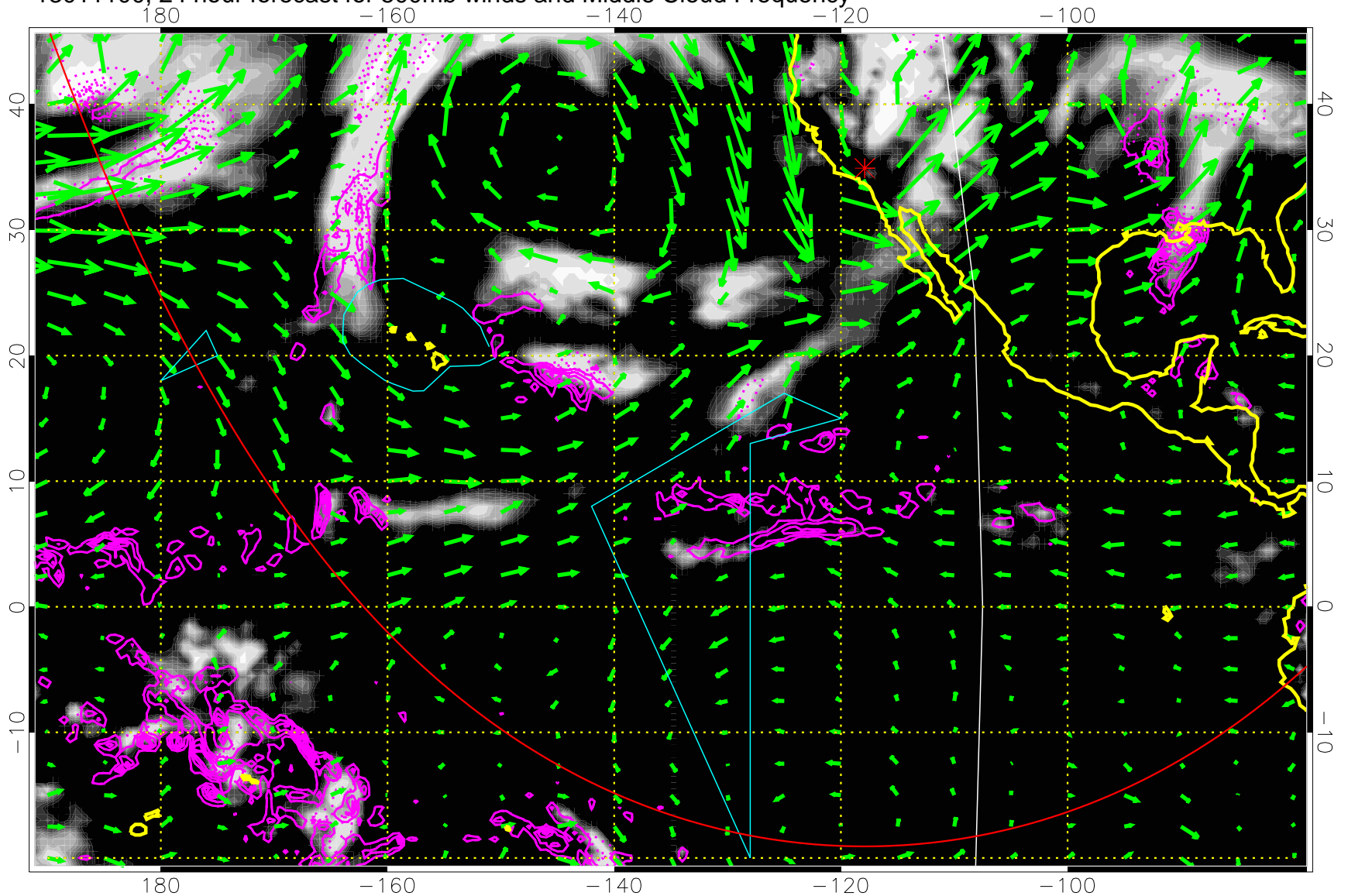


Precip (tot dot, conv sol) past 6 hrs 6 kg/m2 contours, min 4

→ 50 m/s

Range ring of 6000 km -- 19 hours GH round trip

13011100, 24 hour forecast for 500mb winds and Middle Cloud Frequency

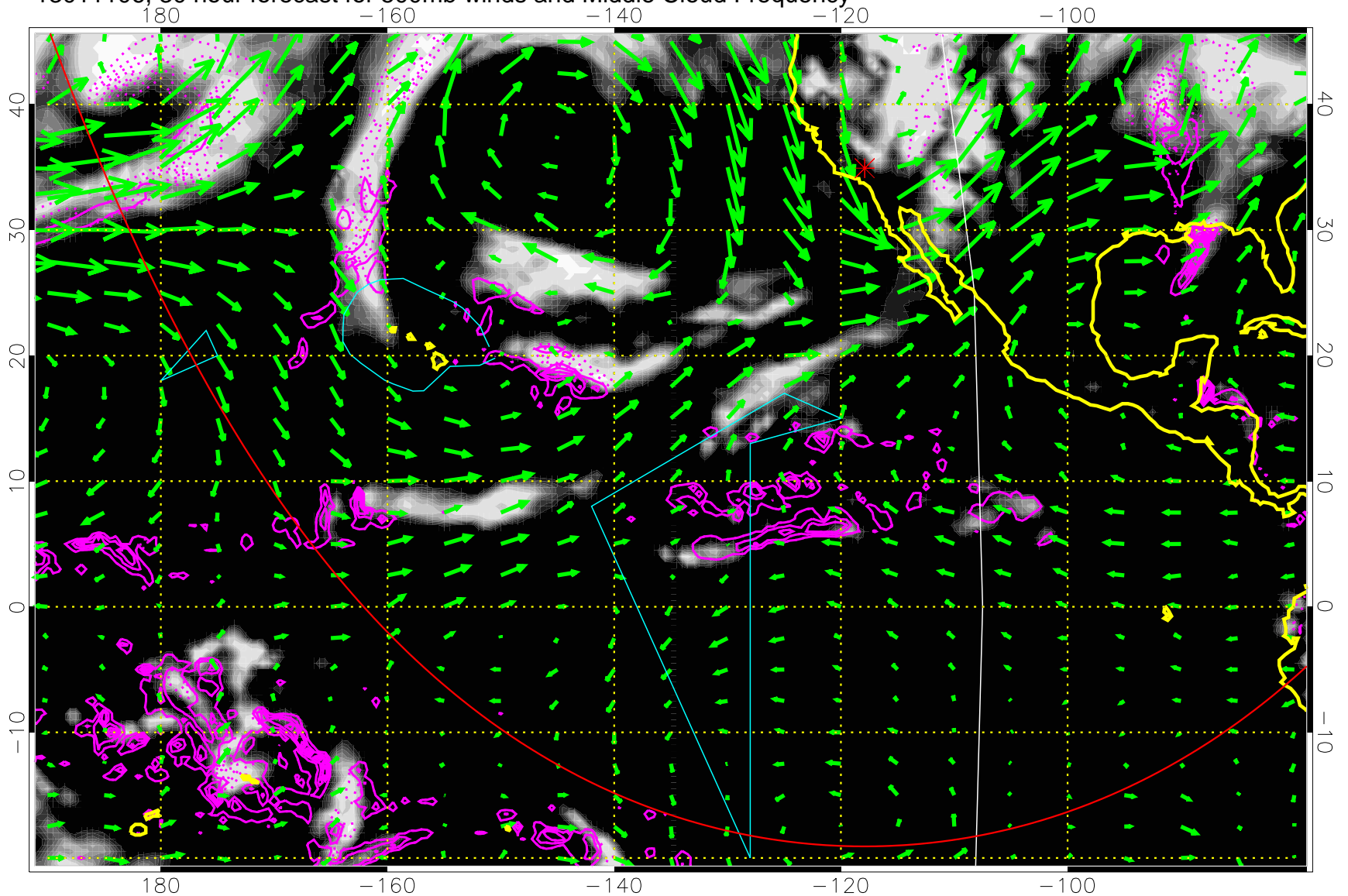


Precip (tot dot, conv sol) past 6 hrs 6 kg/m2 contours, min 4

→ 50 m/s

Range ring of 6000 km -- 19 hours GH round trip

13011106, 30 hour forecast for 500mb winds and Middle Cloud Frequency

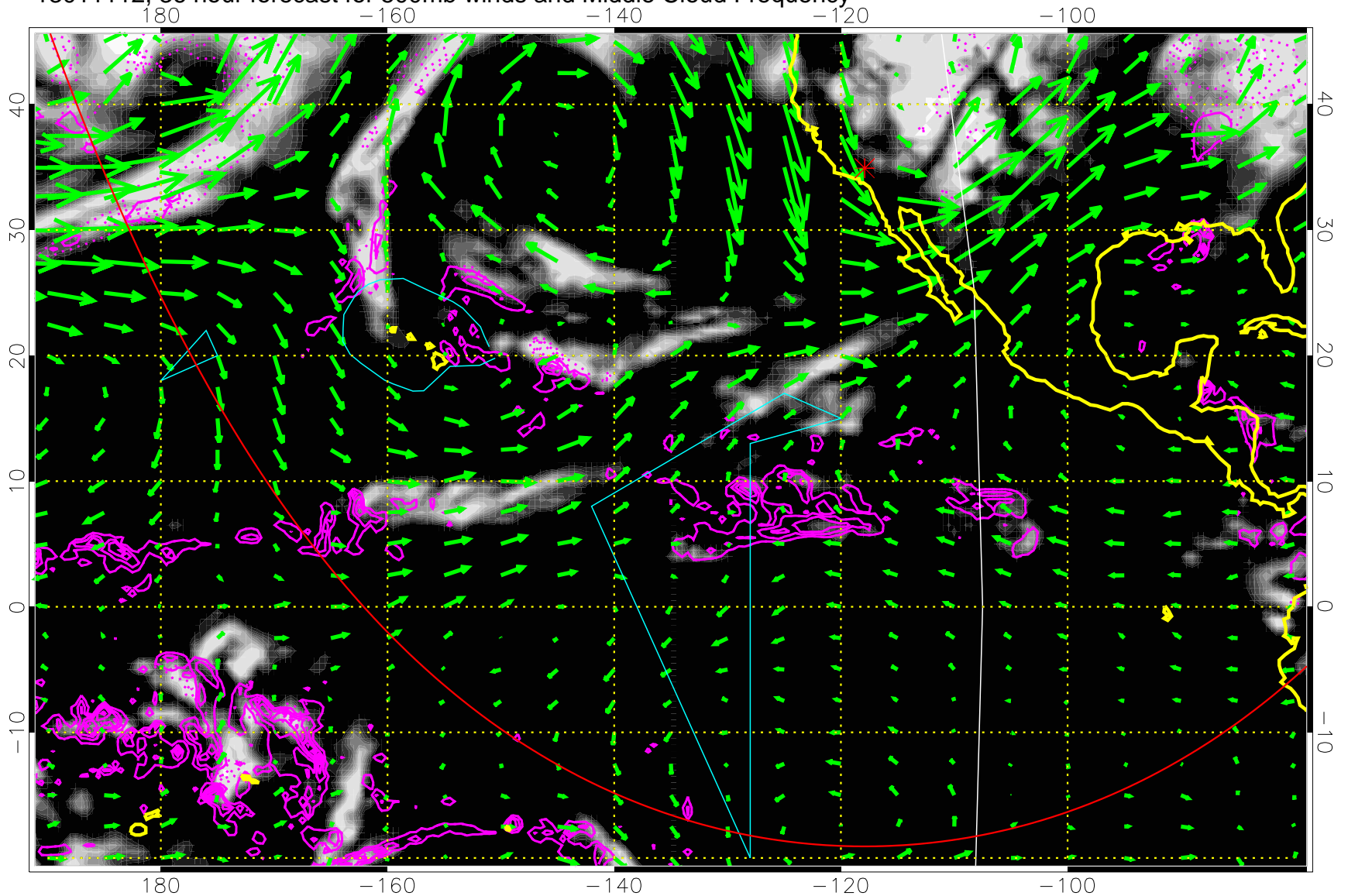


Precip (tot dot, conv sol) past 6 hrs 6 kg/m2 contours, min 4

→ 50 m/s

Range ring of 6000 km -- 19 hours GH round trip

13011112, 36 hour forecast for 500mb winds and Middle Cloud Frequency

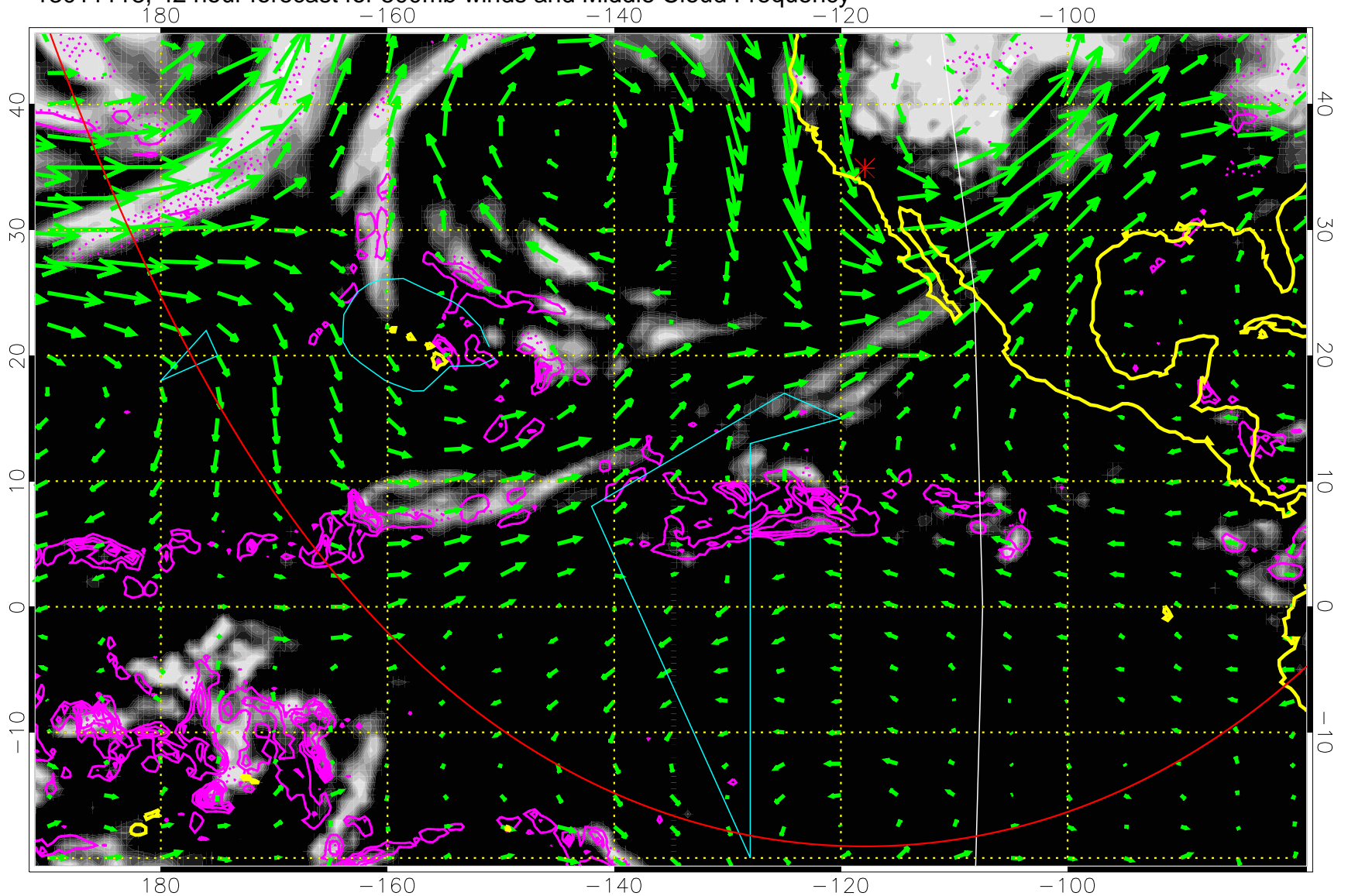


Precip (tot dot, conv sol) past 6 hrs 6 kg/m2 contours, min 4

→ 50 m/s

Range ring of 6000 km -- 19 hours GH round trip

13011118, 42 hour forecast for 500mb winds and Middle Cloud Frequency

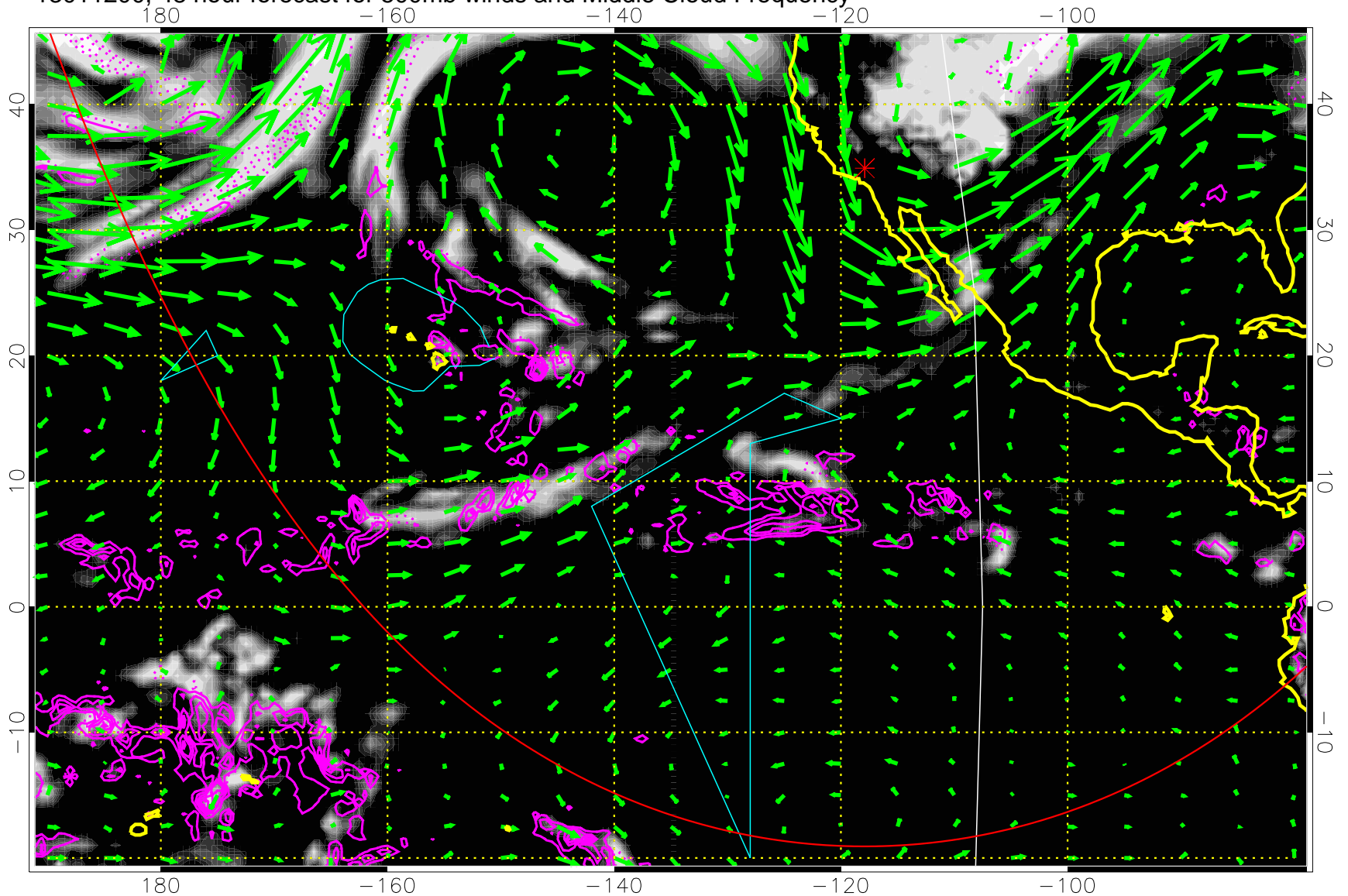


Precip (tot dot, conv sol) past 6 hrs 6 kg/m2 contours, min 4

→ 50 m/s

Range ring of 6000 km -- 19 hours GH round trip

13011200, 48 hour forecast for 500mb winds and Middle Cloud Frequency

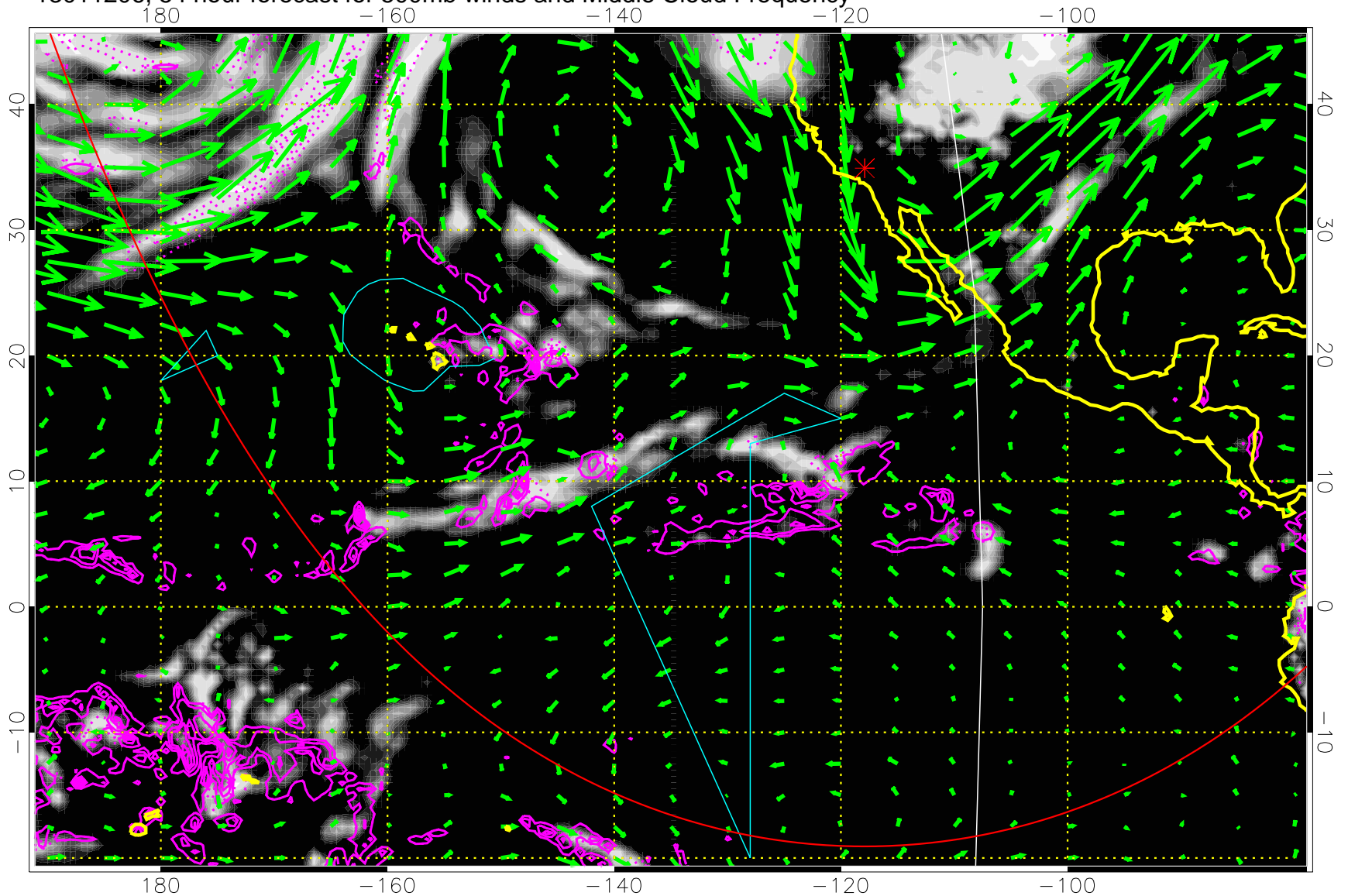


Precip (tot dot, conv sol) past 6 hrs 6 kg/m2 contours, min 4

→ 50 m/s

Range ring of 6000 km -- 19 hours GH round trip

13011206, 54 hour forecast for 500mb winds and Middle Cloud Frequency



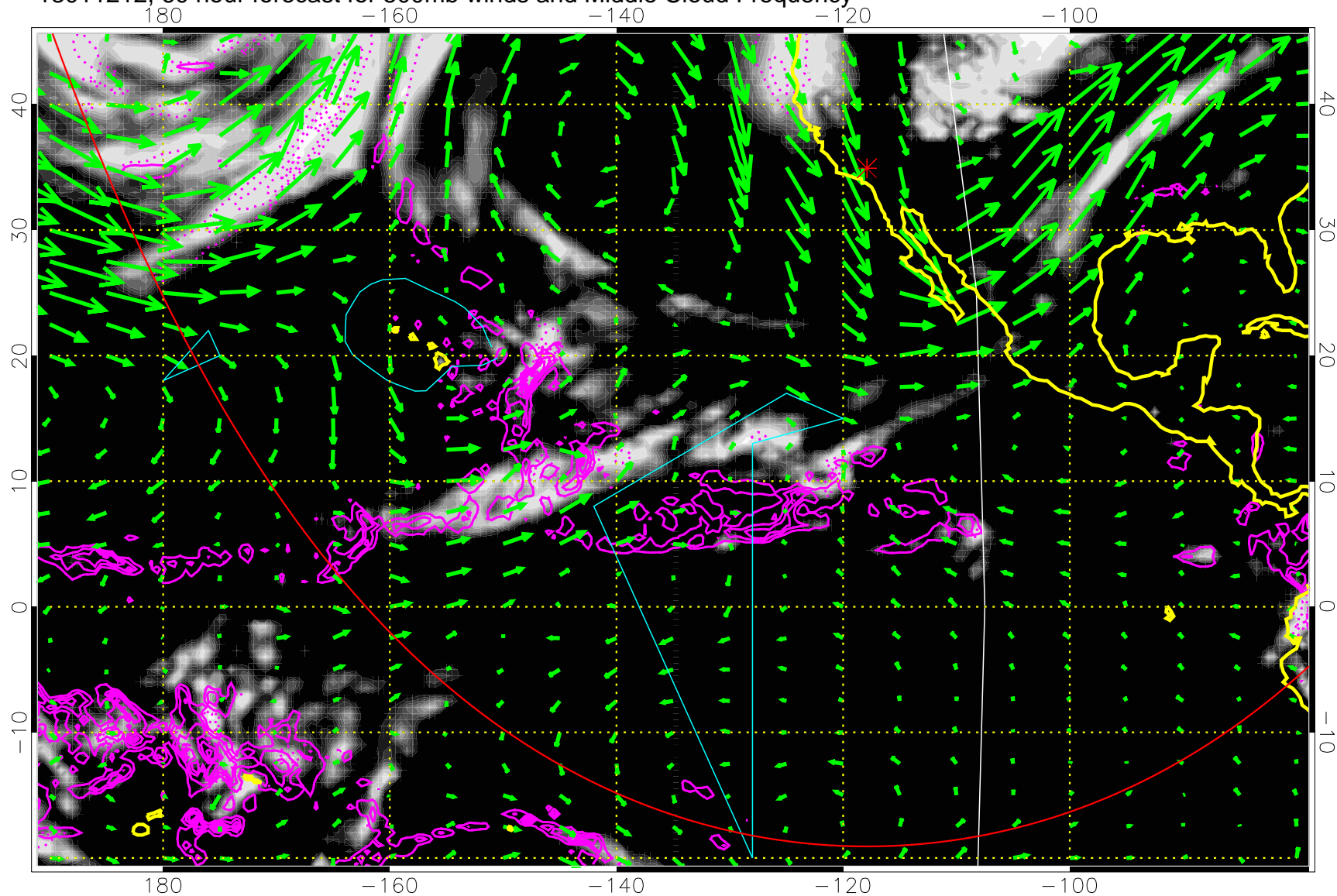
Precip (tot dot, conv sol) past 6 hrs 6 kg/m<sup>2</sup> contours, min 4

→ 50 m/s

Range ring of 6000 km -- 19 hours GH round trip



13011212, 60 hour forecast for 500mb winds and Middle Cloud Frequency

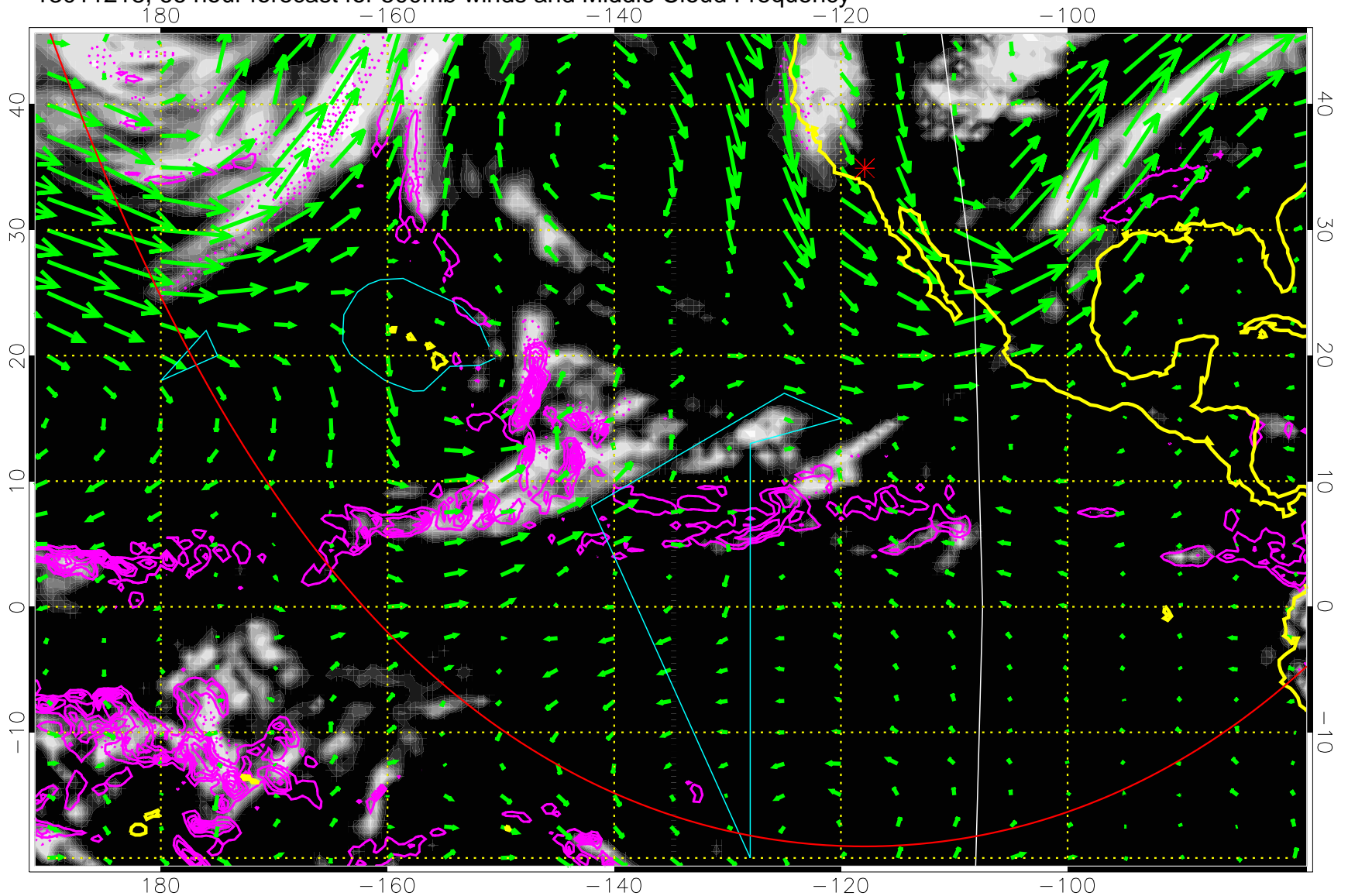


Precip (tot dot, conv sol) past 6 hrs 6 kg/m2 contours, min 4

→ 50 m/s

Range ring of 6000 km -- 19 hours GH round trip

13011218, 66 hour forecast for 500mb winds and Middle Cloud Frequency

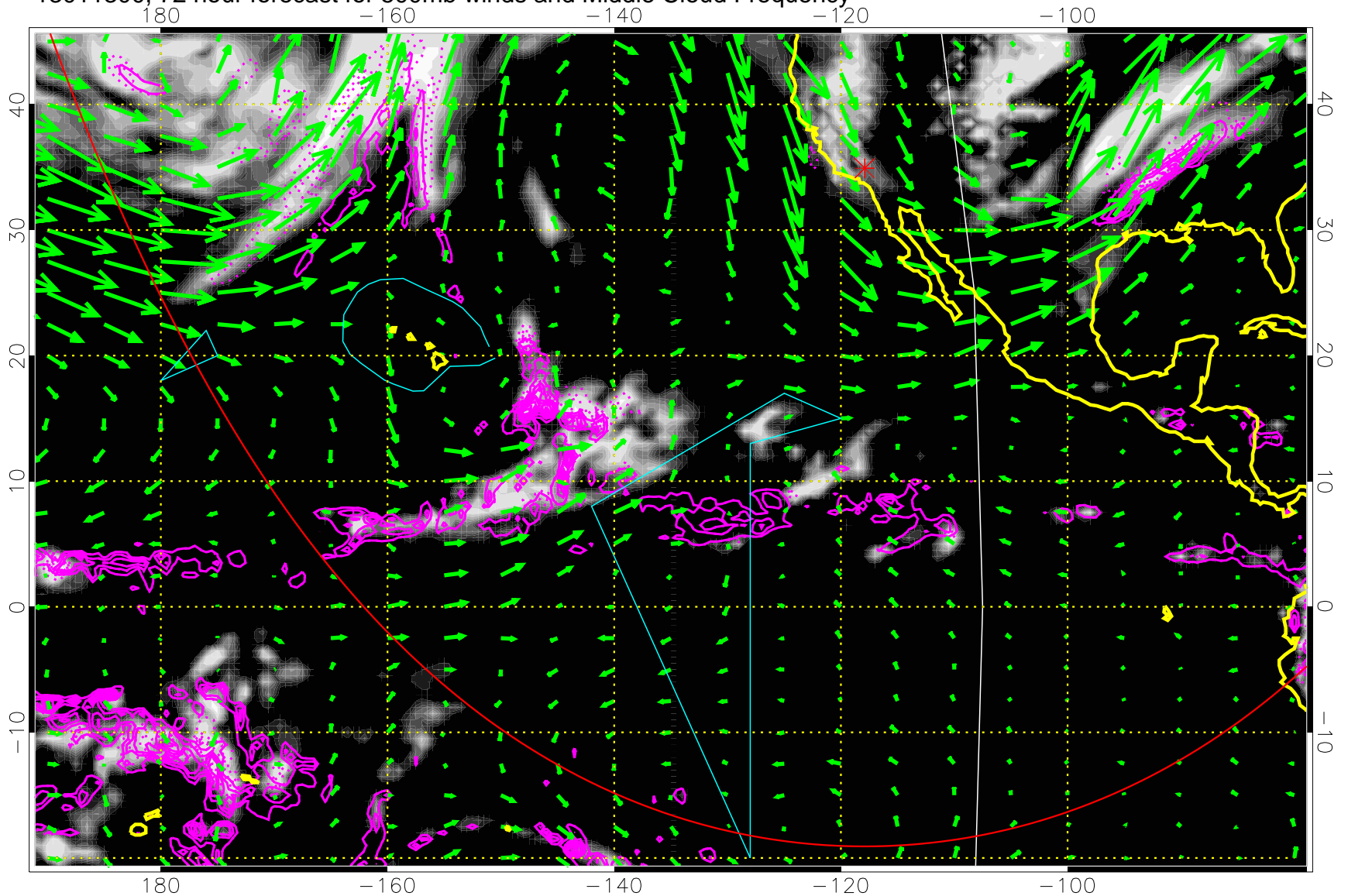


Precip (tot dot, conv sol) past 6 hrs 6 kg/m2 contours, min 4

→ 50 m/s

Range ring of 6000 km -- 19 hours GH round trip

13011300, 72 hour forecast for 500mb winds and Middle Cloud Frequency

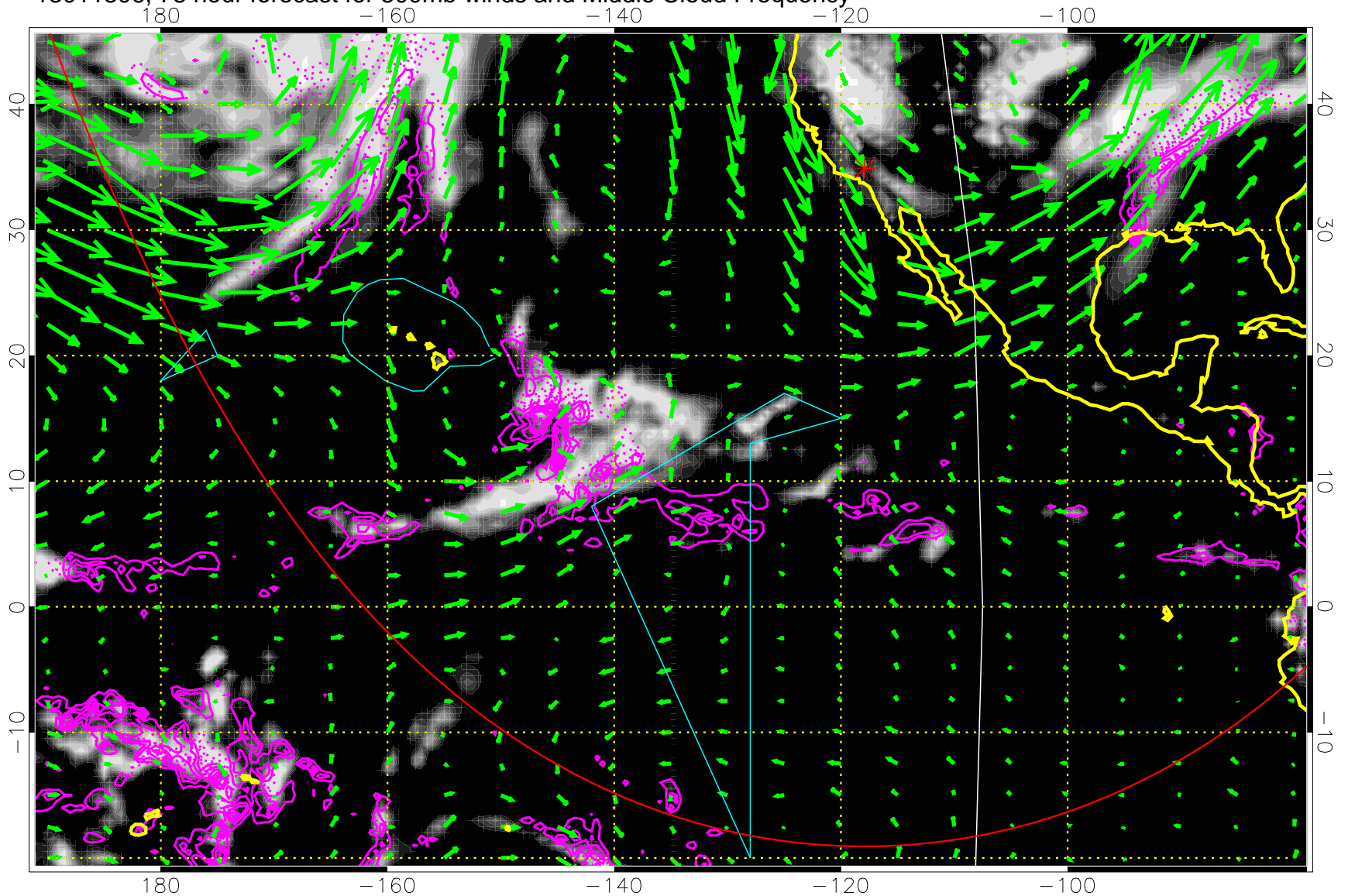


Precip (tot dot, conv sol) past 6 hrs 6 kg/m2 contours, min 4

→ 50 m/s

Range ring of 6000 km -- 19 hours GH round trip

13011306, 78 hour forecast for 500mb winds and Middle Cloud Frequency

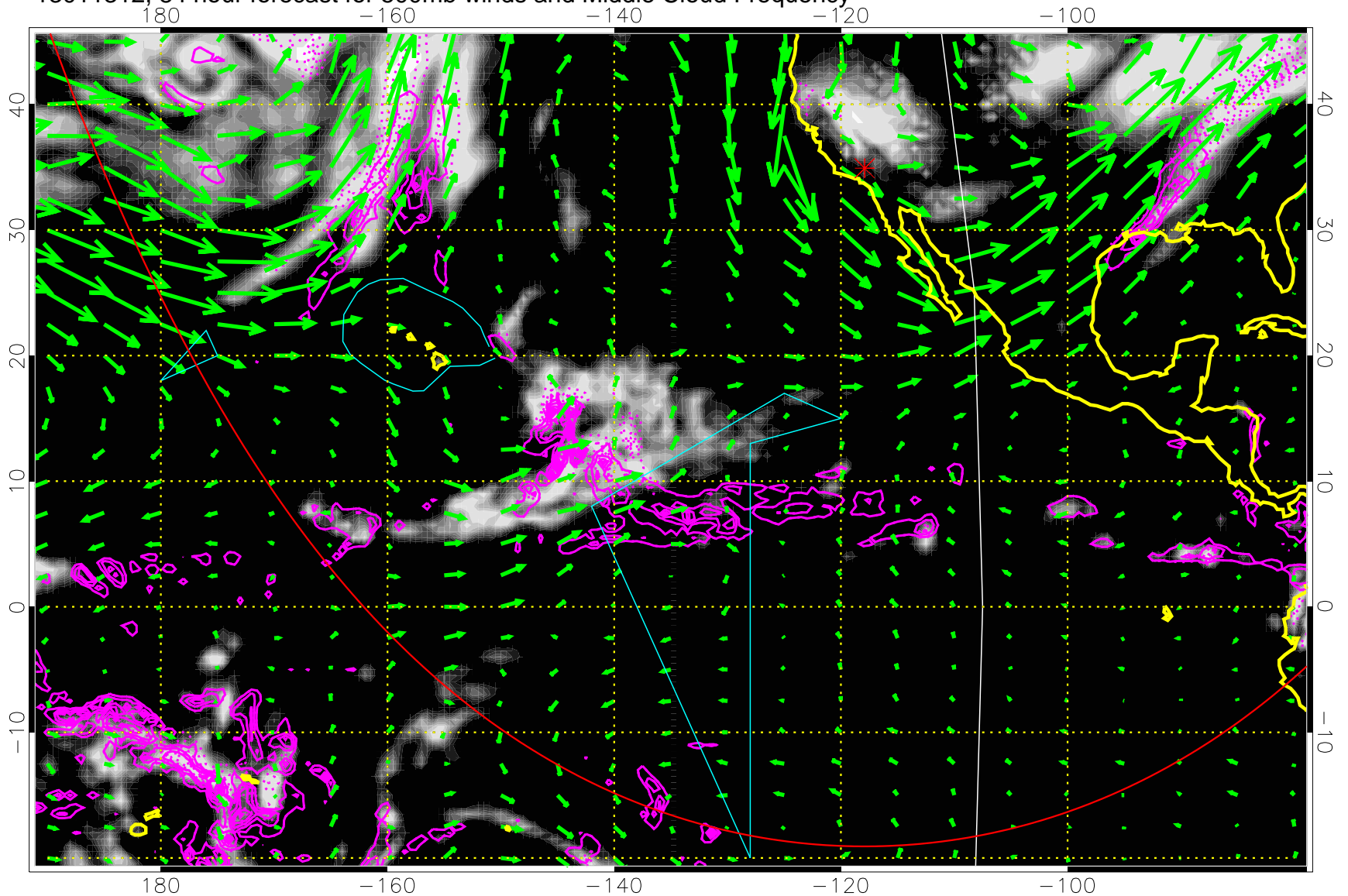


Precip (tot dot, conv sol) past 6 hrs 6 kg/m2 contours, min 4

→ 50 m/s

Range ring of 6000 km -- 19 hours GH round trip

13011312, 84 hour forecast for 500mb winds and Middle Cloud Frequency

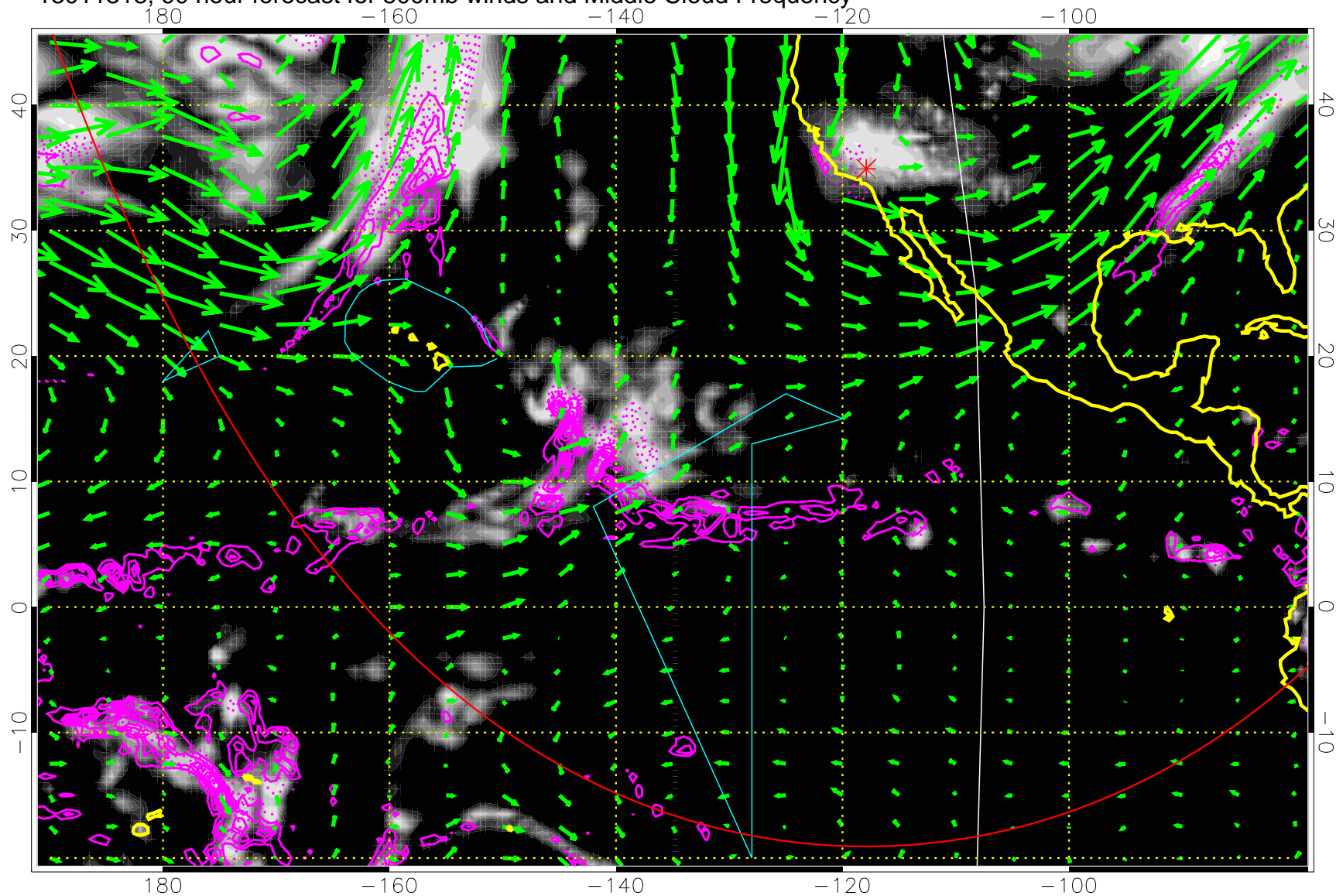


Precip (tot dot, conv sol) past 6 hrs 6 kg/m2 contours, min 4

50 m/s

Range ring of 6000 km -- 19 hours GH round trip

13011318, 90 hour forecast for 500mb winds and Middle Cloud Frequency



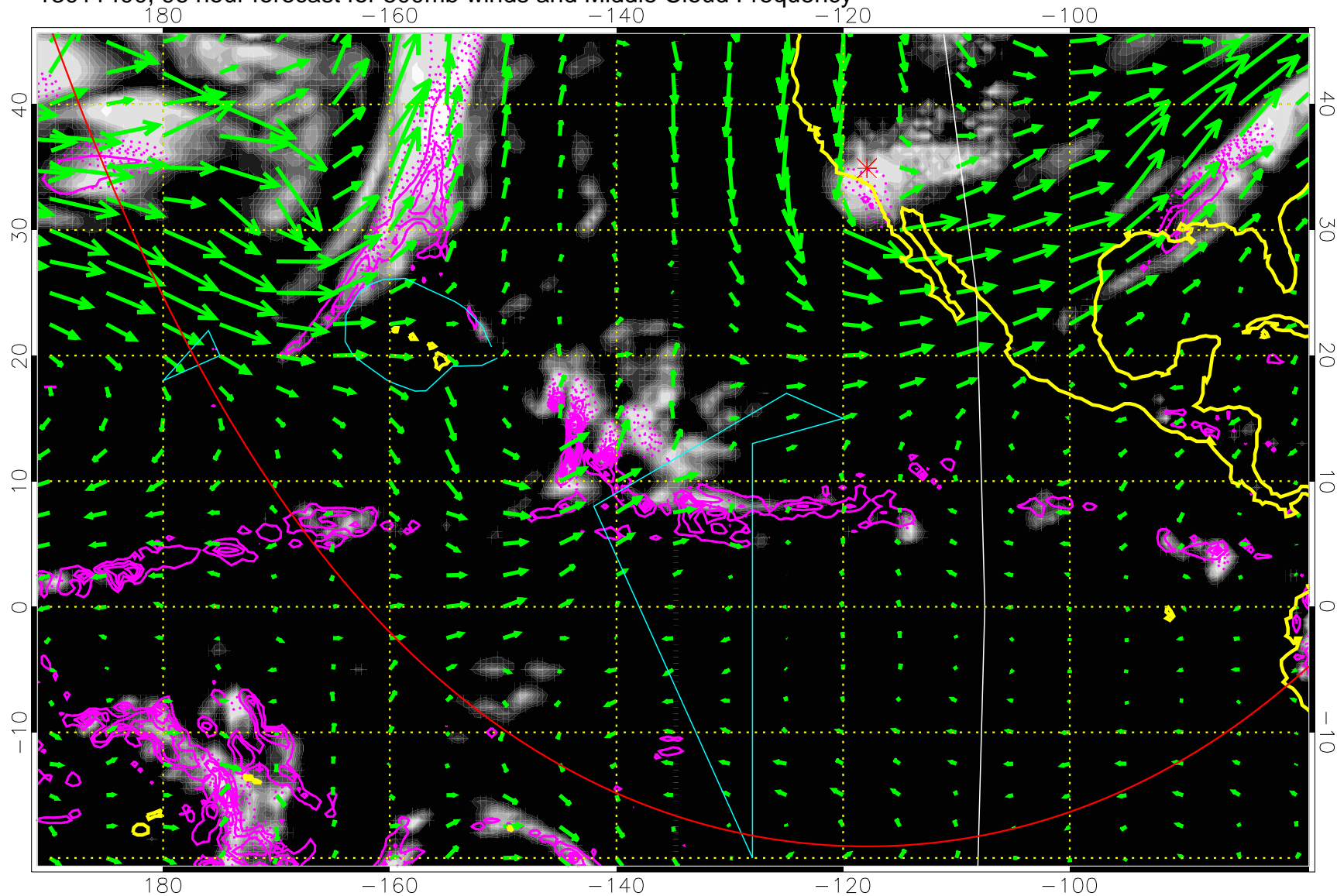
Precip (tot dot, conv sol) past 6 hrs 6 kg/m<sup>2</sup> contours, min 4

→ 50 m/s

Range ring of 6000 km -- 19 hours GH round trip



13011400, 96 hour forecast for 500mb winds and Middle Cloud Frequency

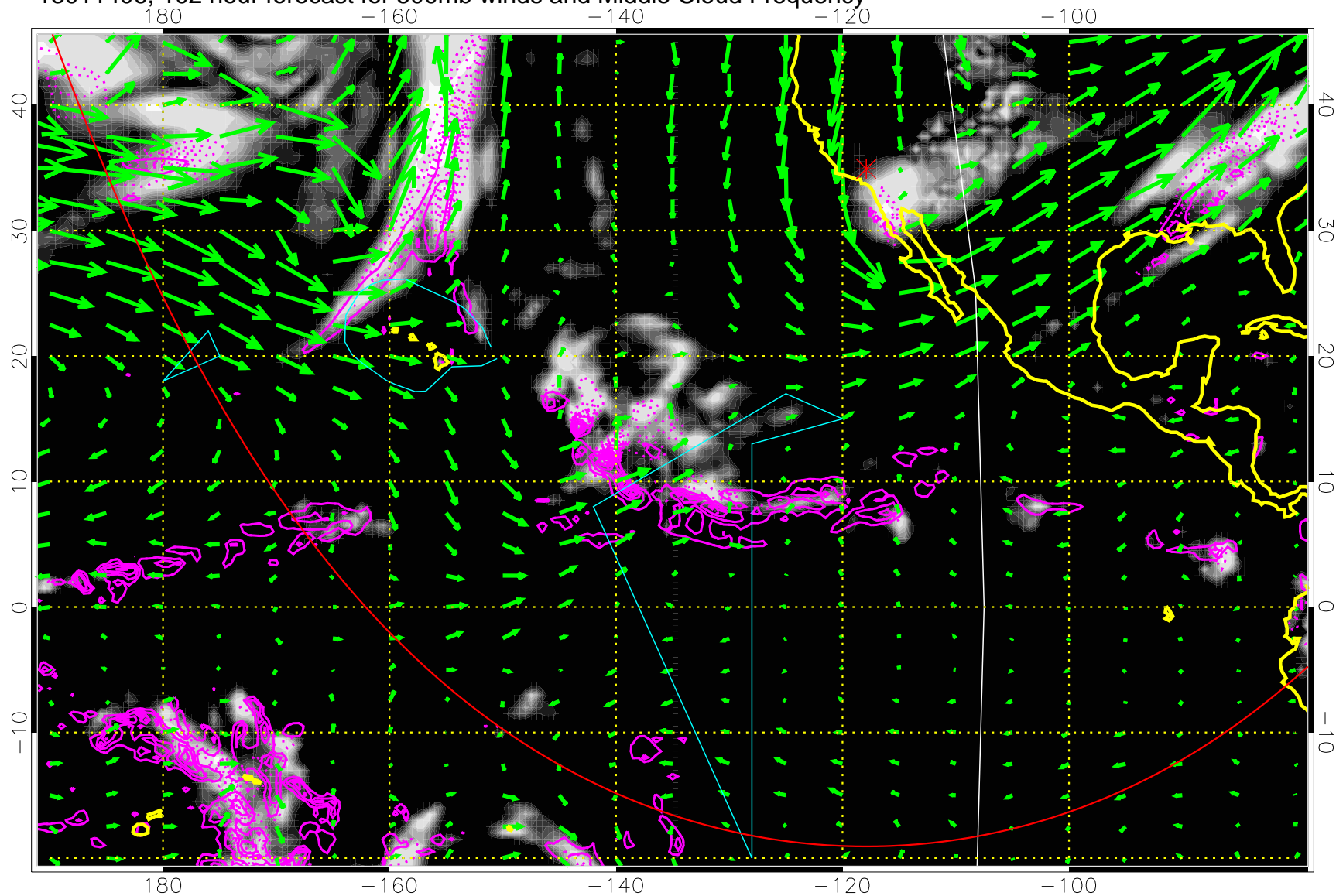


Precip (tot dot, conv sol) past 6 hrs 6 kg/m2 contours, min 4

50 m/s

Range ring of 6000 km -- 19 hours GH round trip

13011406, 102 hour forecast for 500mb winds and Middle Cloud Frequency



Middle Cloud Frequency

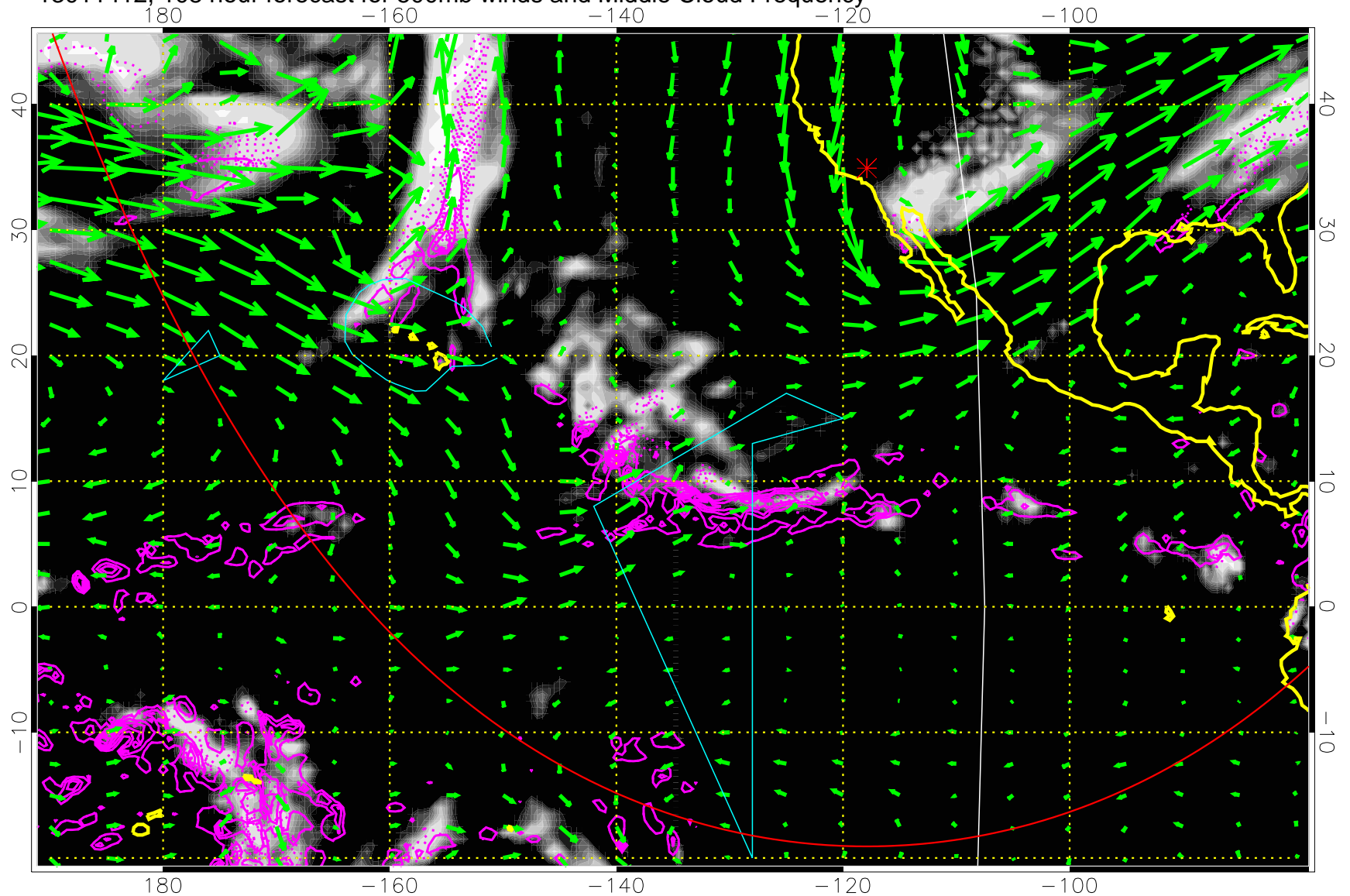
Precip (tot dot, conv sol) past 6 hrs 6 kg/m2 contours, min 4

→ 50 m/s

Range ring of 6000 km -- 19 hours GH round trip



13011412, 108 hour forecast for 500mb winds and Middle Cloud Frequency

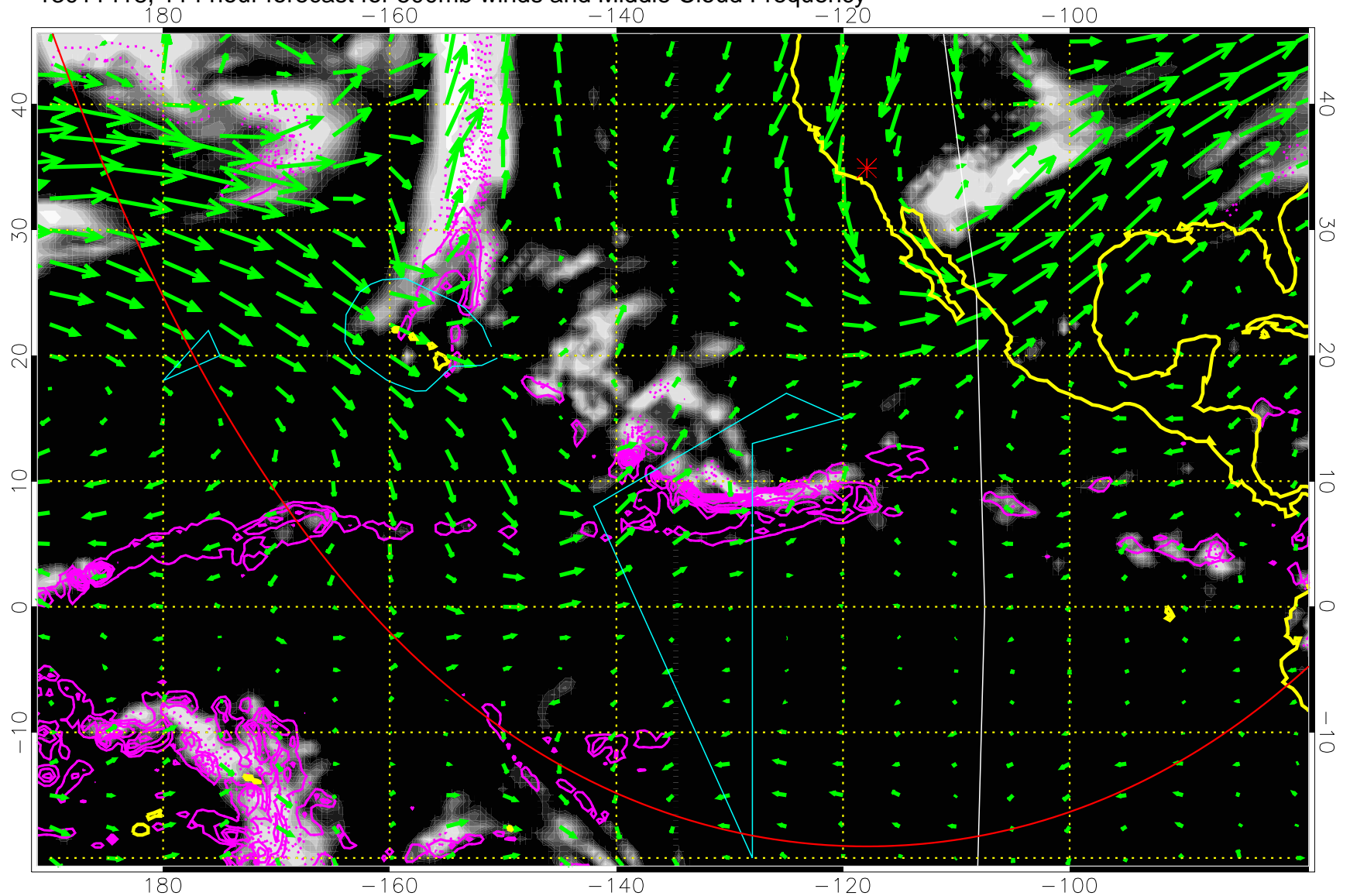


Precip (tot dot, conv sol) past 6 hrs 6 kg/m2 contours, min 4

→ 50 m/s

Range ring of 6000 km -- 19 hours GH round trip

13011418, 114 hour forecast for 500mb winds and Middle Cloud Frequency

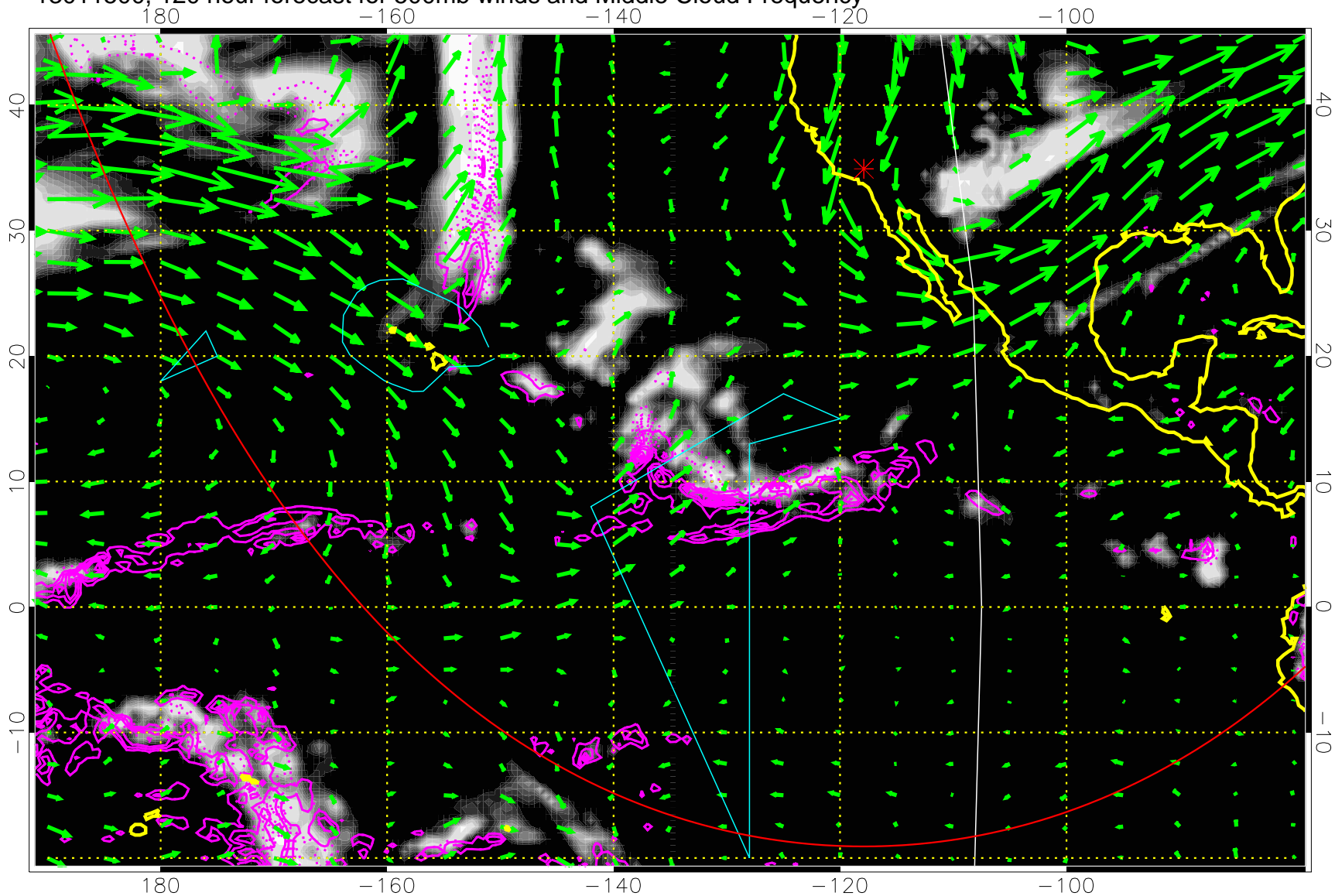


Precip (tot dot, conv sol) past 6 hrs 6 kg/m2 contours, min 4

→ 50 m/s

Range ring of 6000 km -- 19 hours GH round trip

13011500, 120 hour forecast for 500mb winds and Middle Cloud Frequency



Precip (tot dot, conv sol) past 6 hrs 6 kg/m2 contours, min 4

→ 50 m/s

Range ring of 6000 km -- 19 hours GH round trip