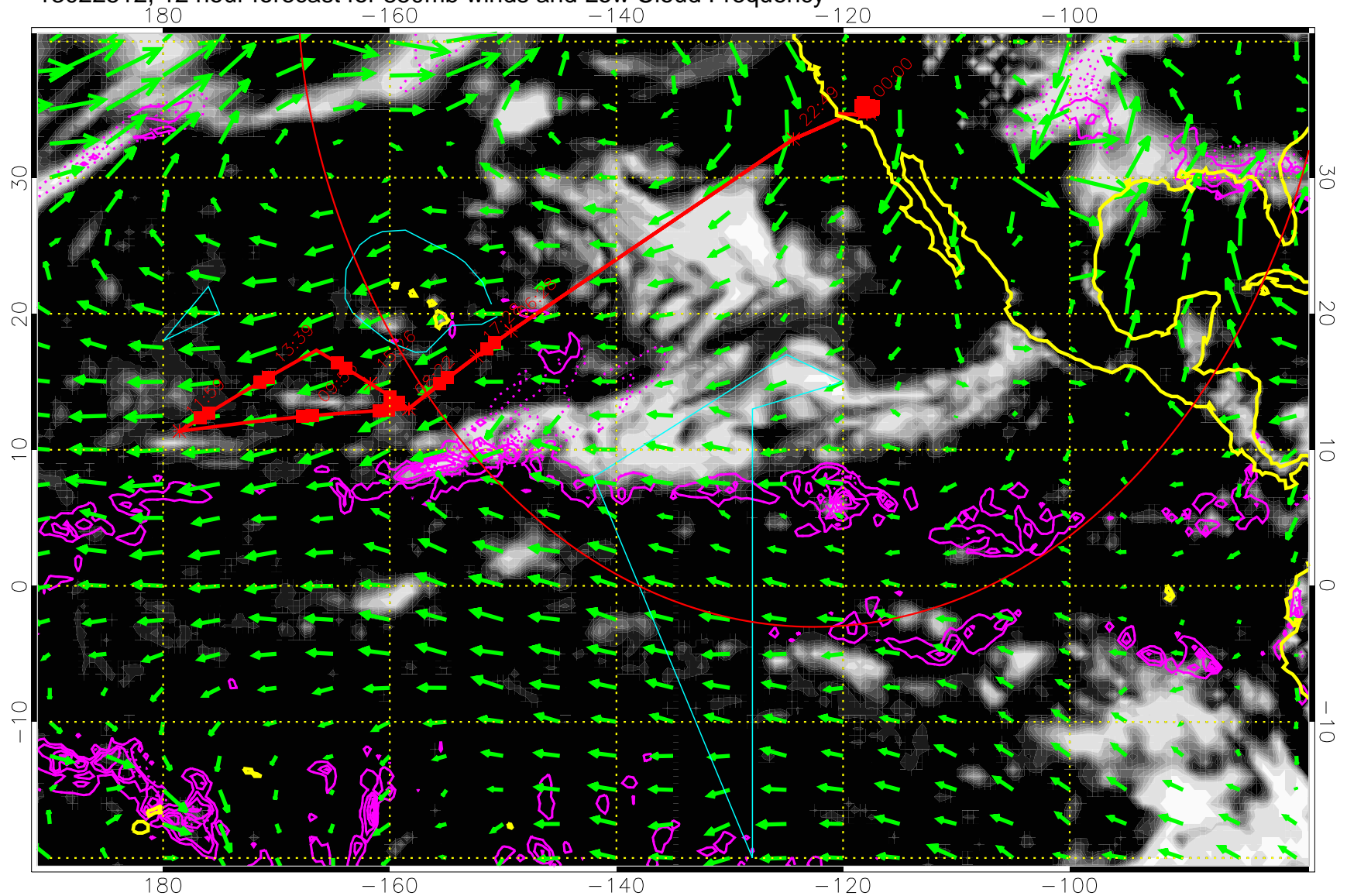


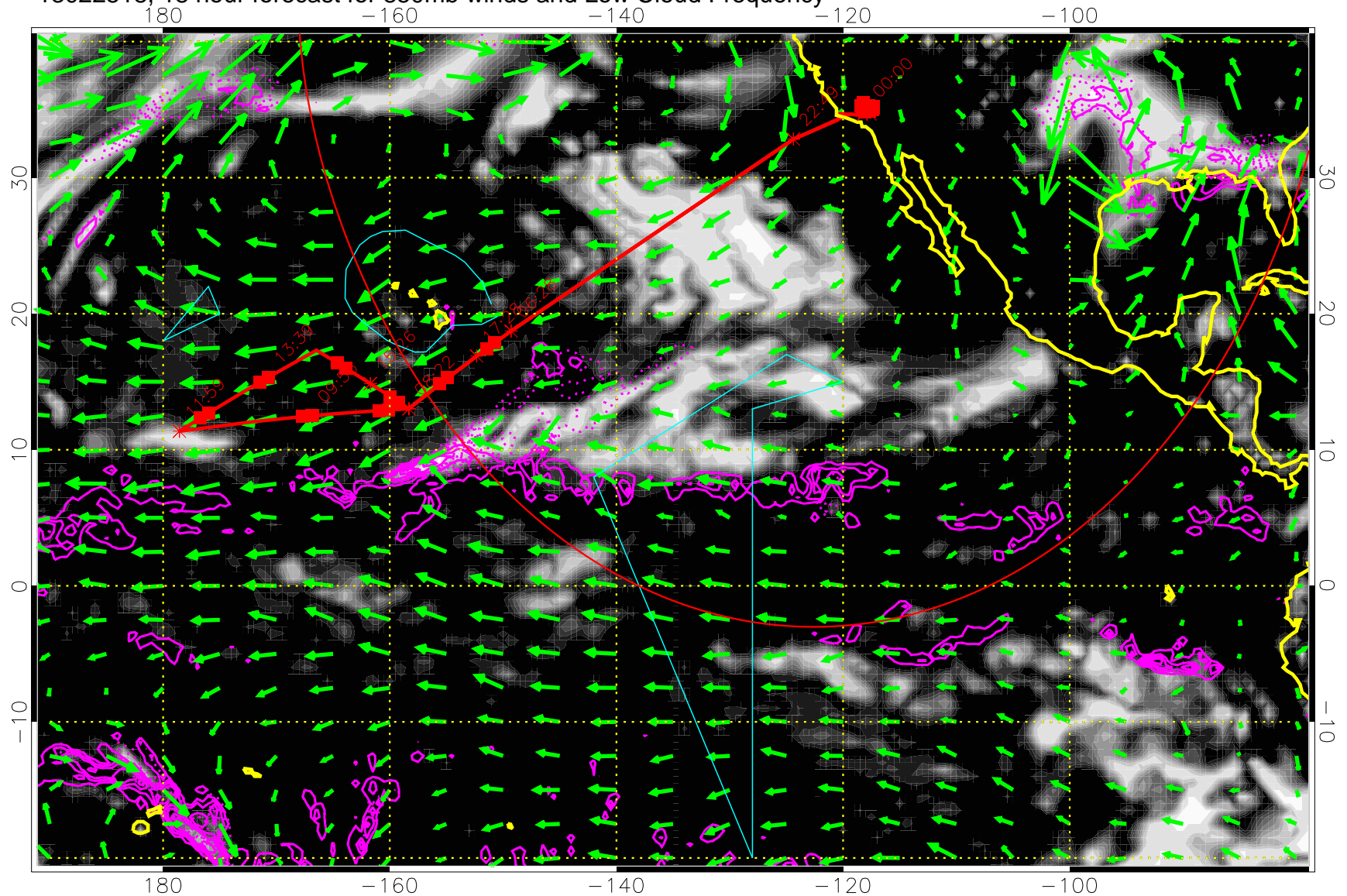
13022512, 12 hour forecast for 850mb winds and Low Cloud Frequency



Precip (tot dot, conv sol) past 6 hrs 6 kg/m2 contours, min 4

→ 30 m/s
Range ring of 4055 km -- 13 hours GH round trip

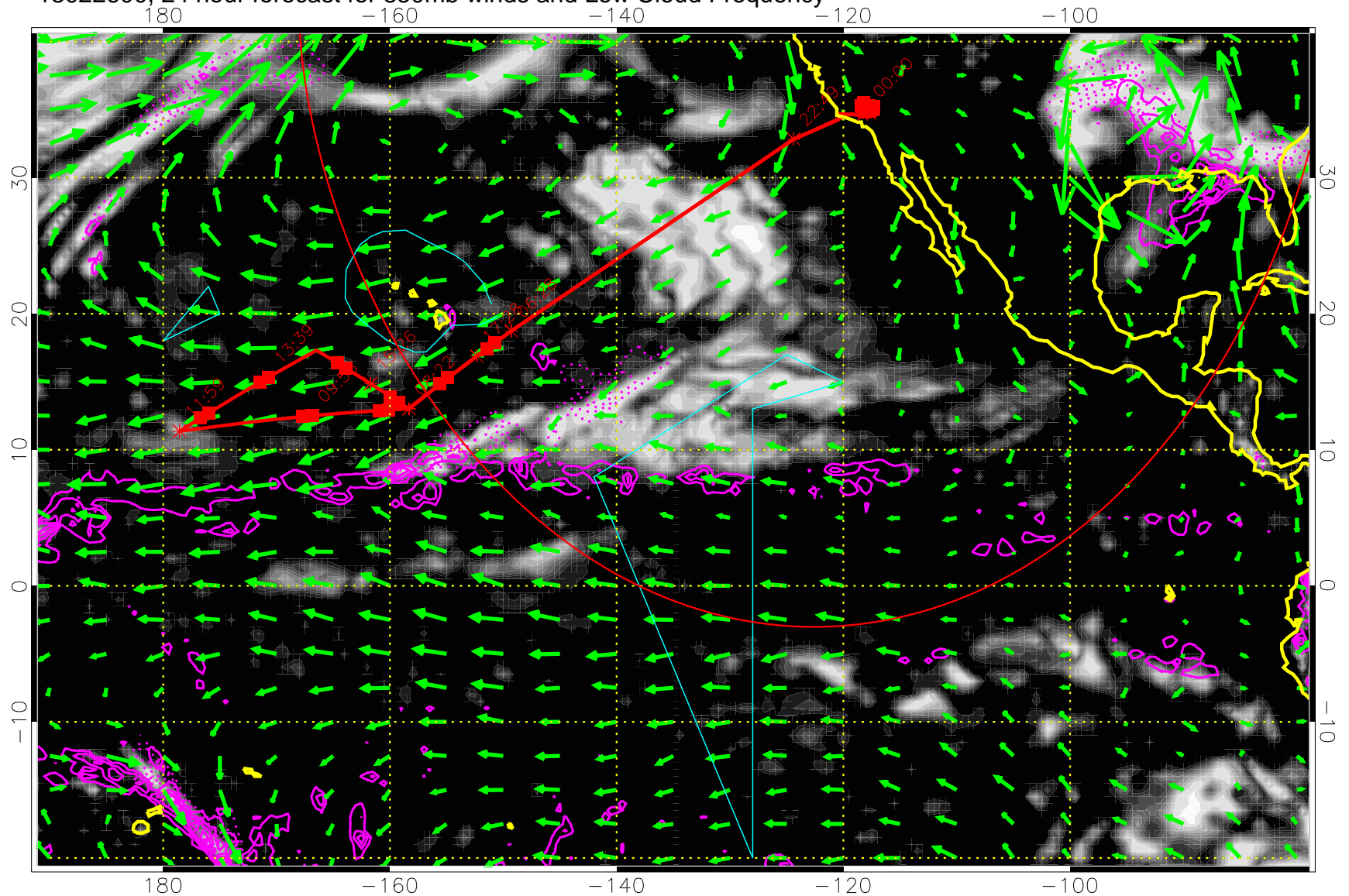
13022518, 18 hour forecast for 850mb winds and Low Cloud Frequency



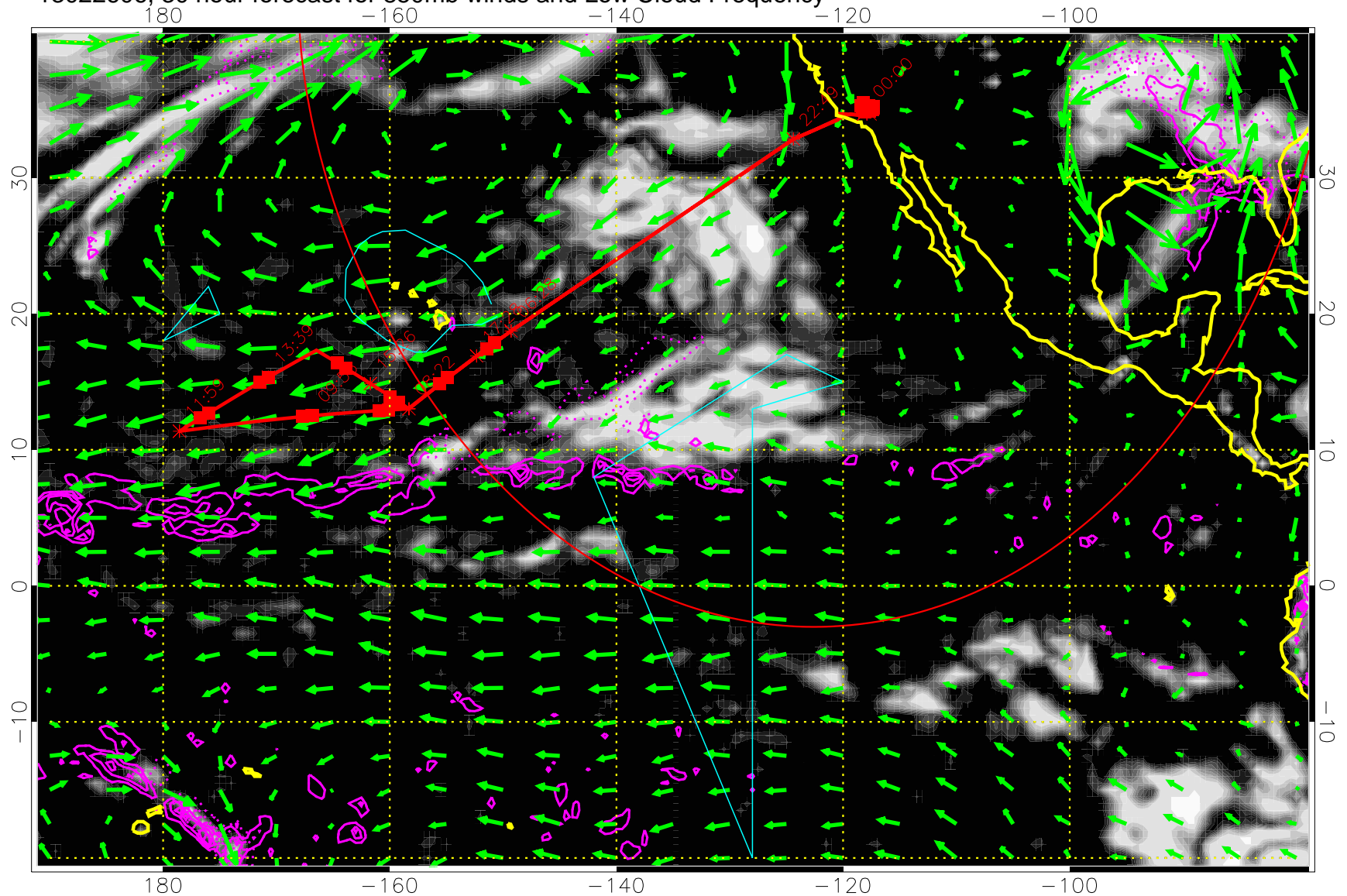
Precip (tot dot, conv sol) past 6 hrs 6 kg/m2 contours, min 4

→ 30 m/s
Range ring of 4055 km -- 13 hours GH round trip

13022600, 24 hour forecast for 850mb winds and Low Cloud Frequency



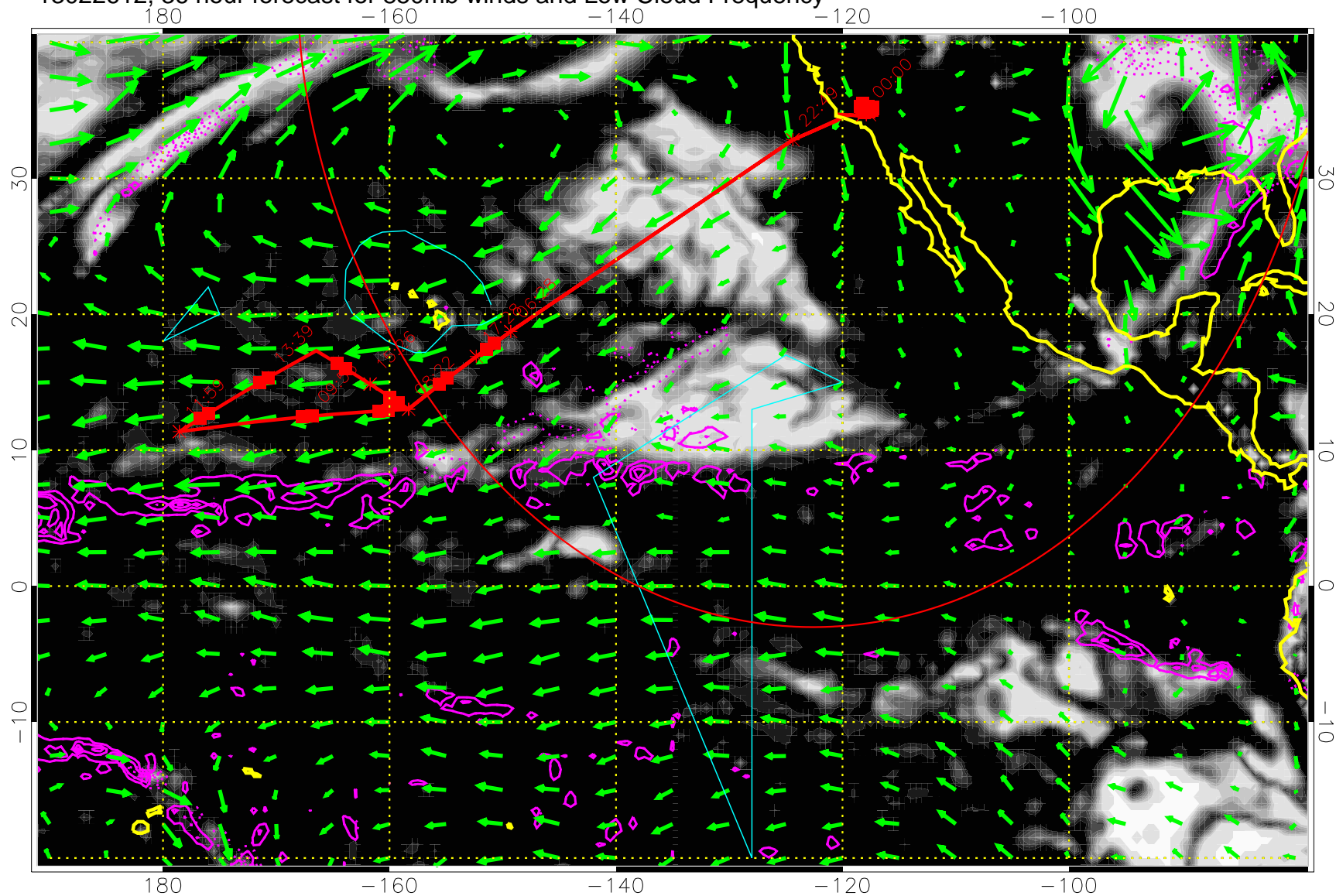
13022606, 30 hour forecast for 850mb winds and Low Cloud Frequency



Precip (tot dot, conv sol) past 6 hrs 6 kg/m2 contours, min 4

→ 30 m/s
Range ring of 4055 km -- 13 hours GH round trip

13022612, 36 hour forecast for 850mb winds and Low Cloud Frequency

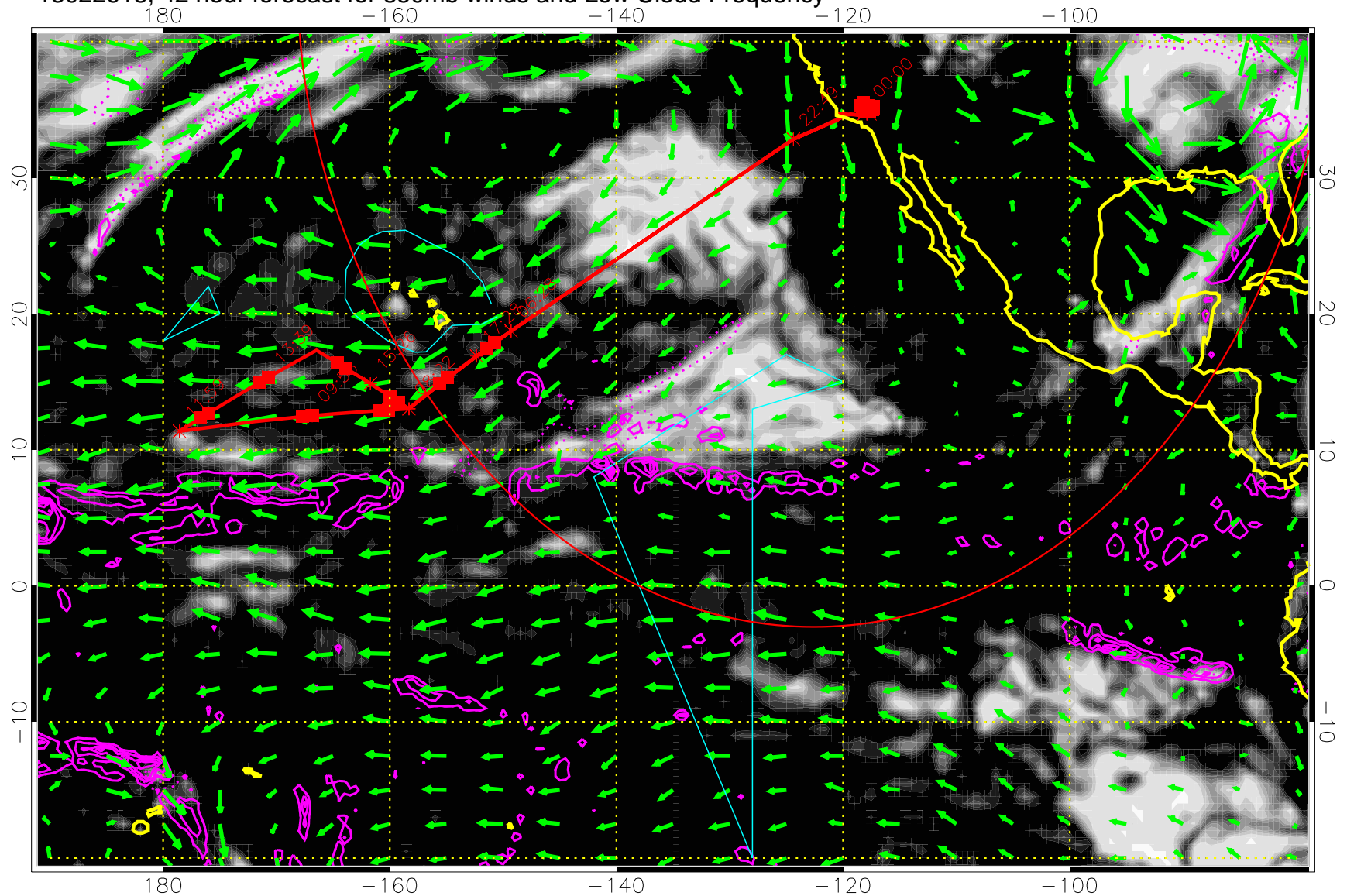


Precip (tot dot, conv sol) past 6 hrs 6 kg/m2 contours, min 4

→ 30 m/s

Range ring of 4055 km -- 13 hours GH round trip

13022618, 42 hour forecast for 850mb winds and Low Cloud Frequency

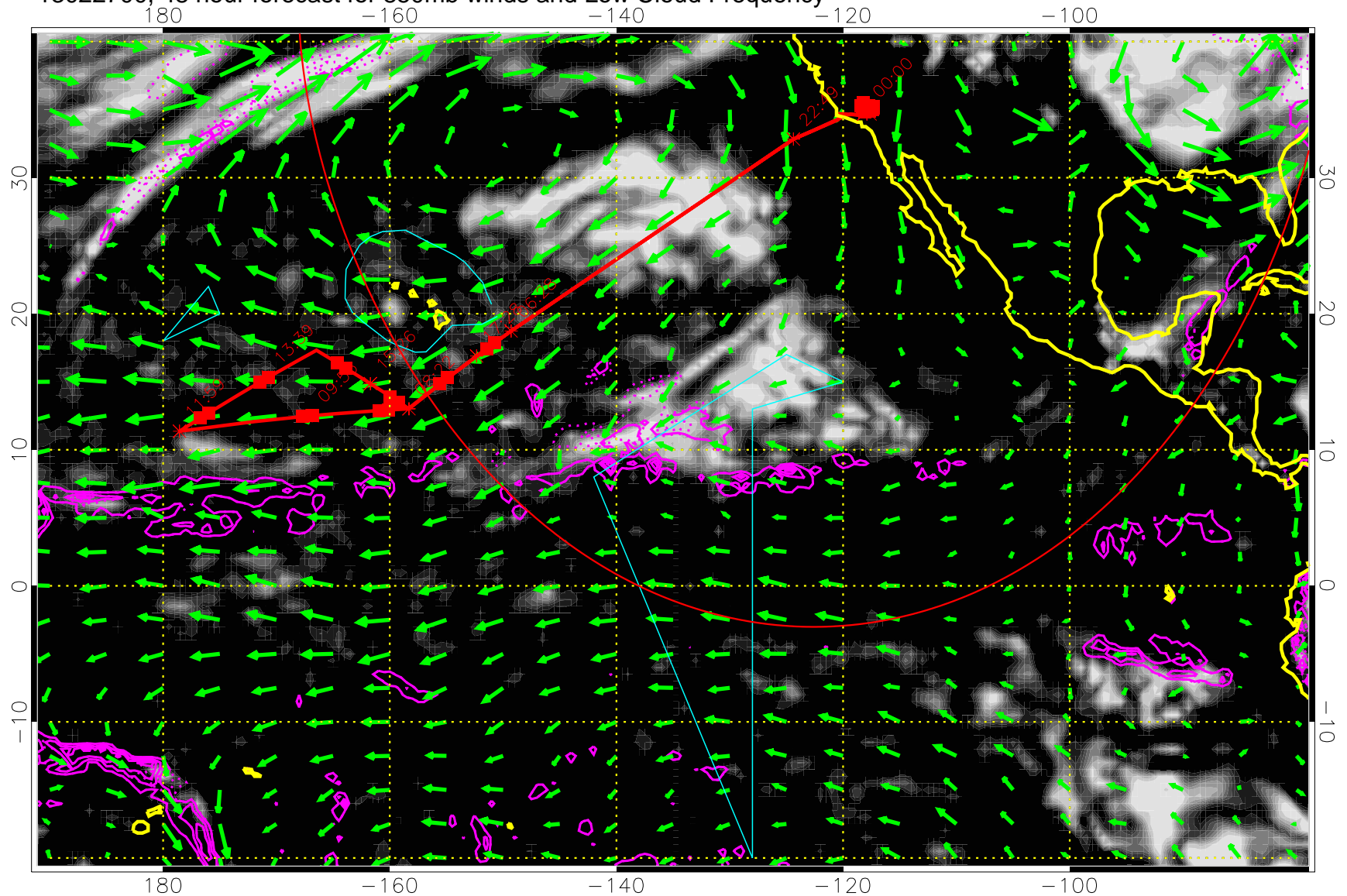


Precip (tot dot, conv sol) past 6 hrs 6 kg/m2 contours, min 4

→ 30 m/s

Range ring of 4055 km -- 13 hours GH round trip

13022700, 48 hour forecast for 850mb winds and Low Cloud Frequency

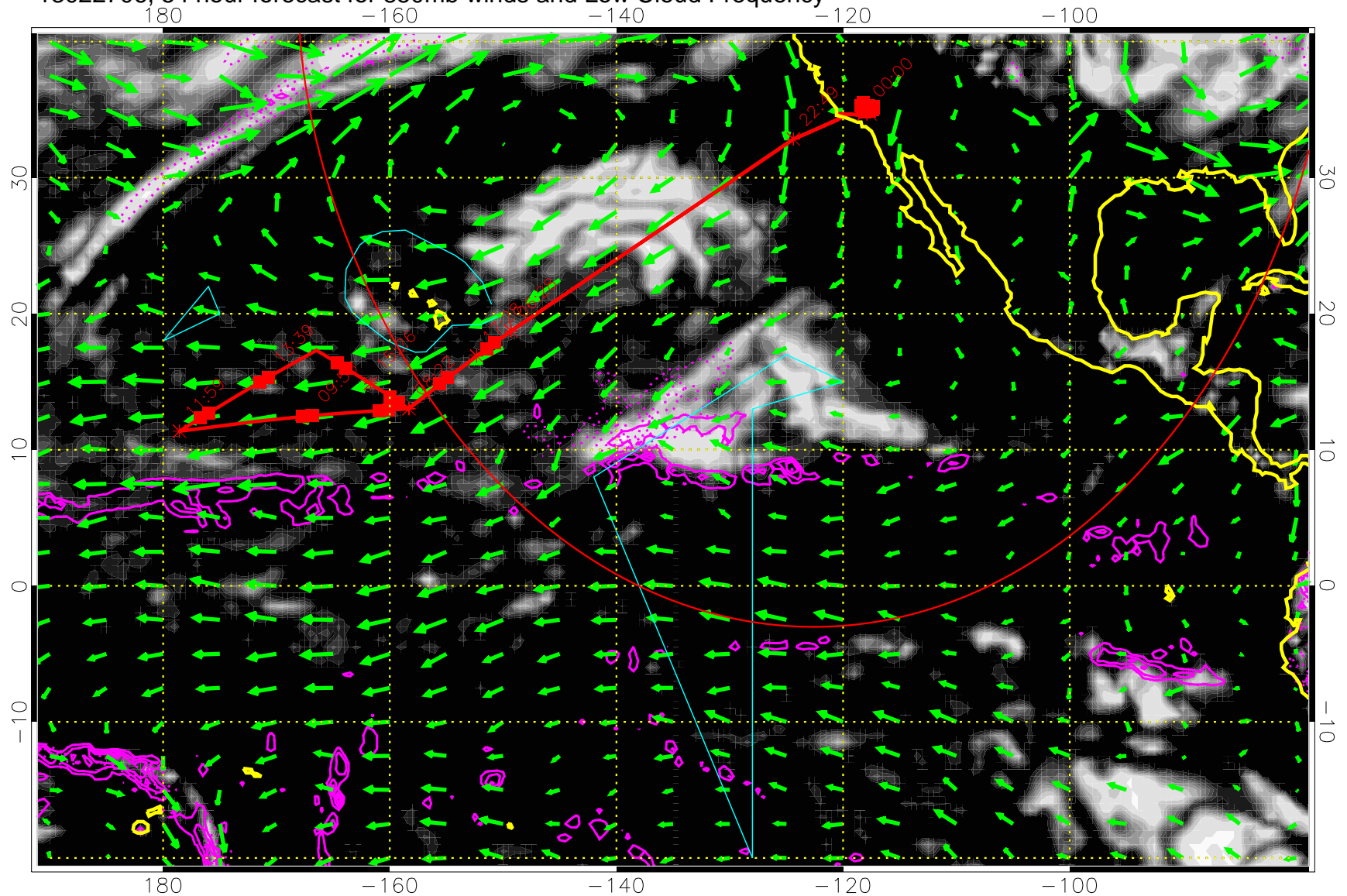


Precip (tot dot, conv sol) past 6 hrs 6 kg/m2 contours, min 4

→ 30 m/s

Range ring of 4055 km -- 13 hours GH round trip

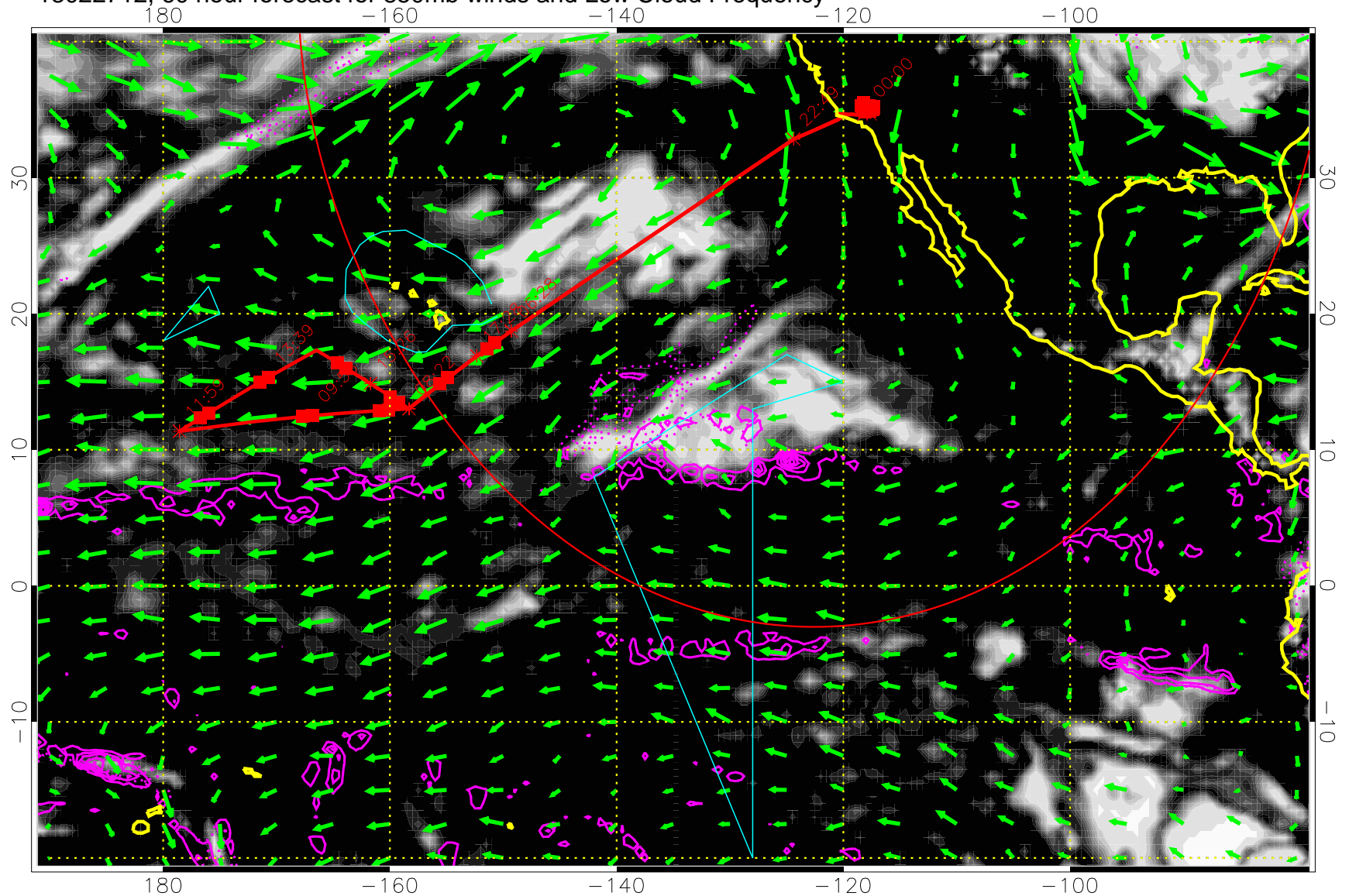
13022706, 54 hour forecast for 850mb winds and Low Cloud Frequency



Precip (tot dot, conv sol) past 6 hrs 6 kg/m2 contours, min 4

→ 30 m/s
Range ring of 4055 km -- 13 hours GH round trip

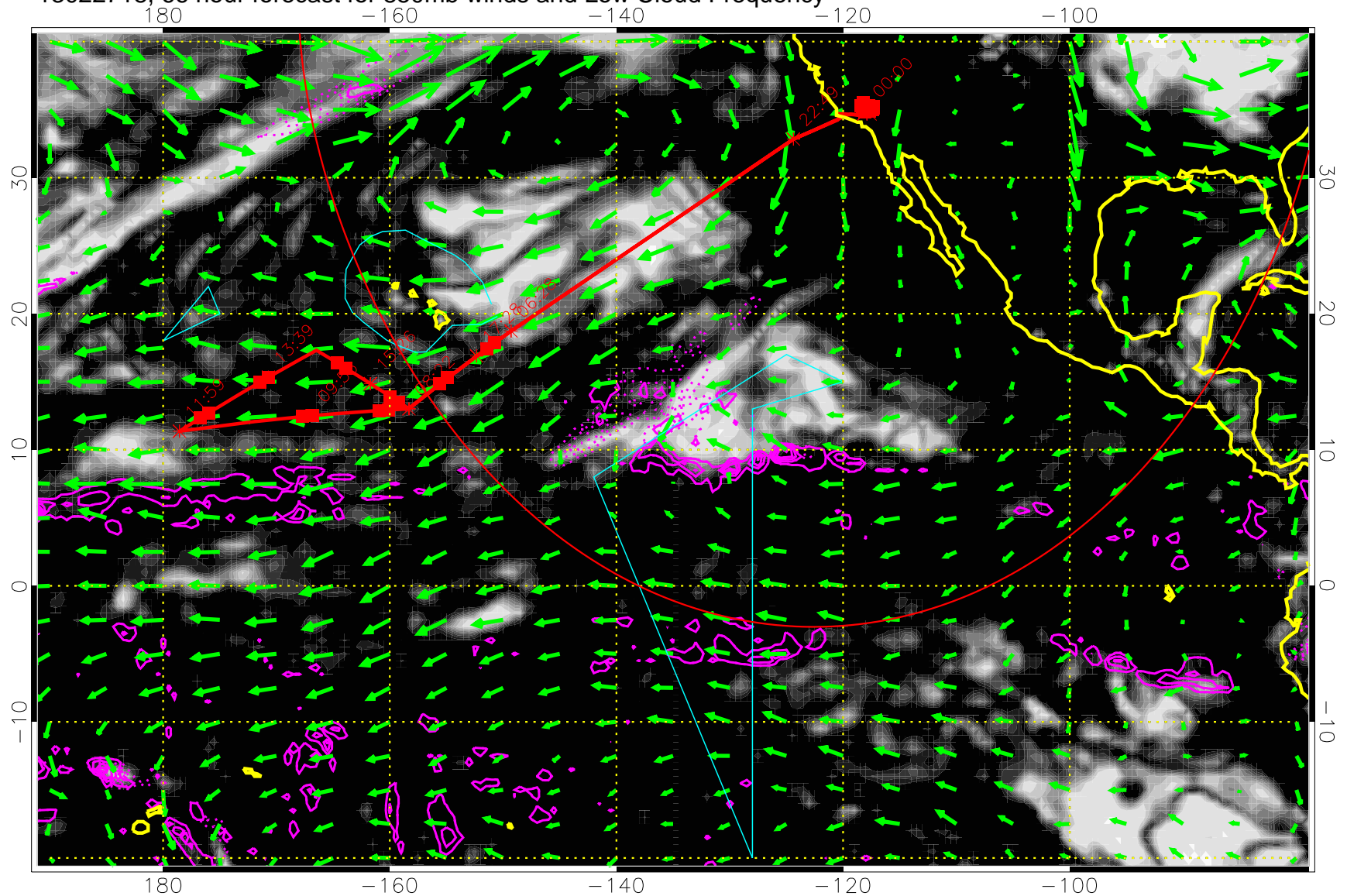
13022712, 60 hour forecast for 850mb winds and Low Cloud Frequency



Precip (tot dot, conv sol) past 6 hrs 6 kg/m2 contours, min 4

→ 30 m/s
Range ring of 4055 km -- 13 hours GH round trip

13022718, 66 hour forecast for 850mb winds and Low Cloud Frequency

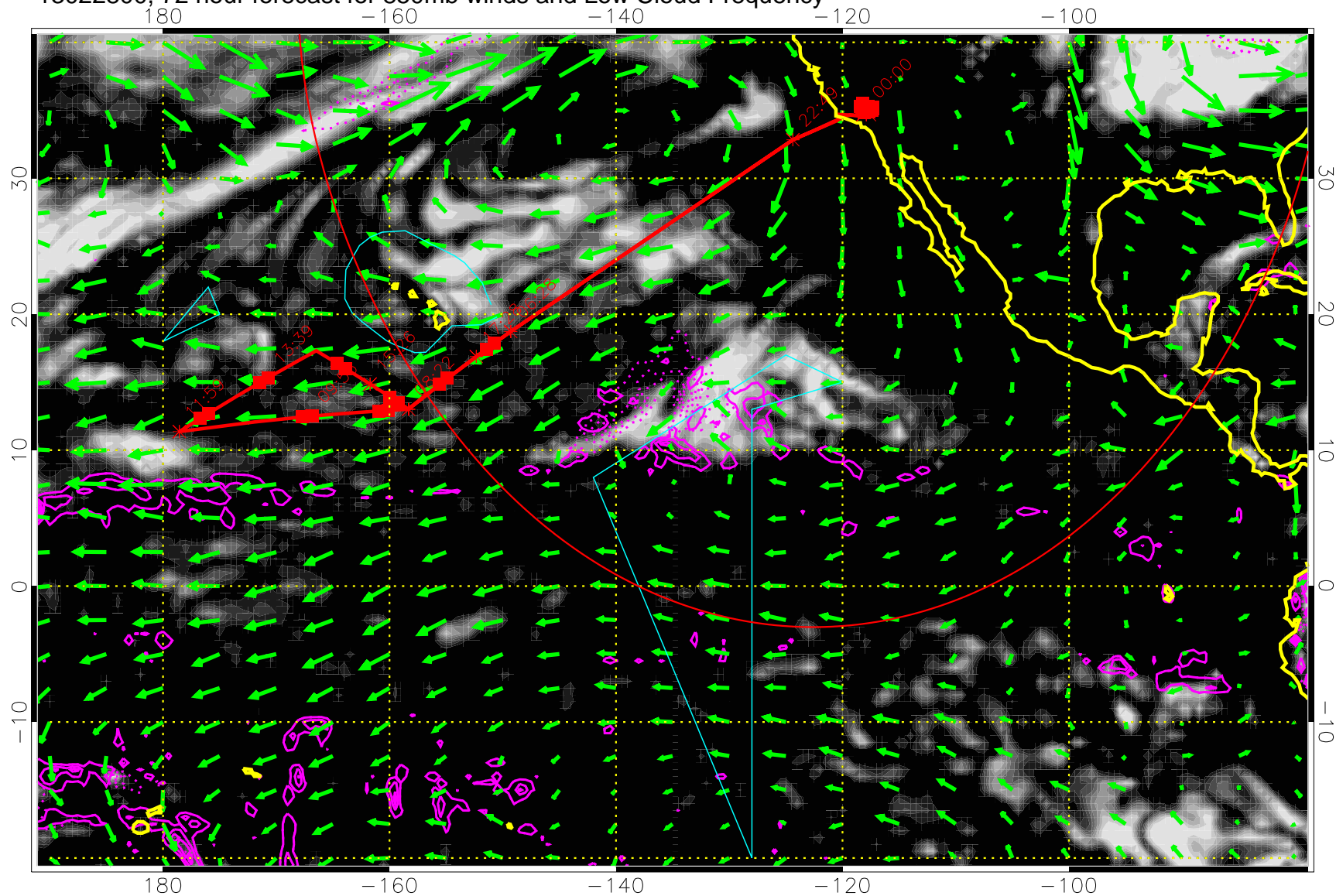


Precip (tot dot, conv sol) past 6 hrs 6 kg/m2 contours, min 4

→ 30 m/s

Range ring of 4055 km -- 13 hours GH round trip

13022800, 72 hour forecast for 850mb winds and Low Cloud Frequency

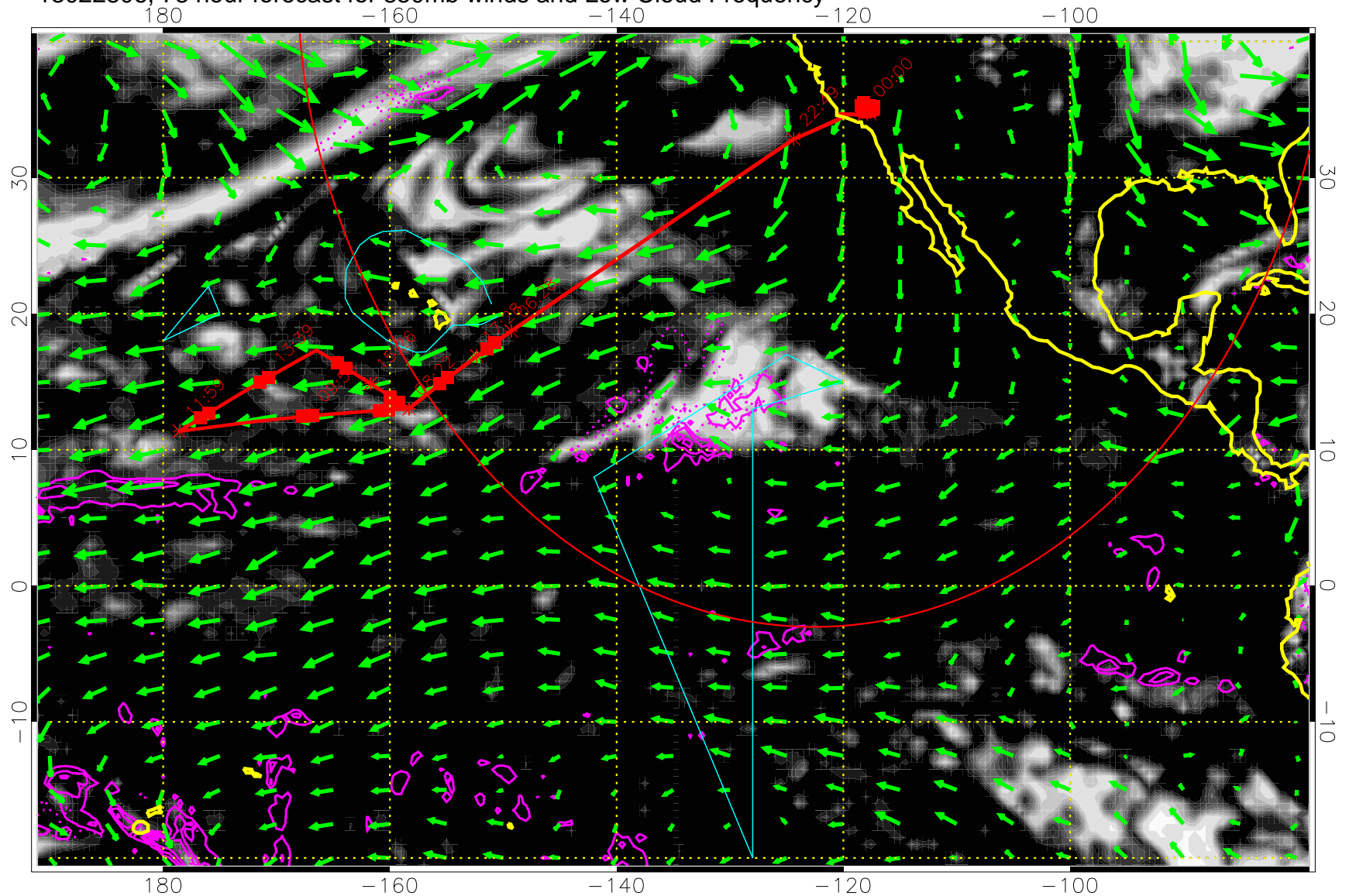


Precip (tot dot, conv sol) past 6 hrs 6 kg/m2 contours, min 4

→ 30 m/s

Range ring of 4055 km -- 13 hours GH round trip

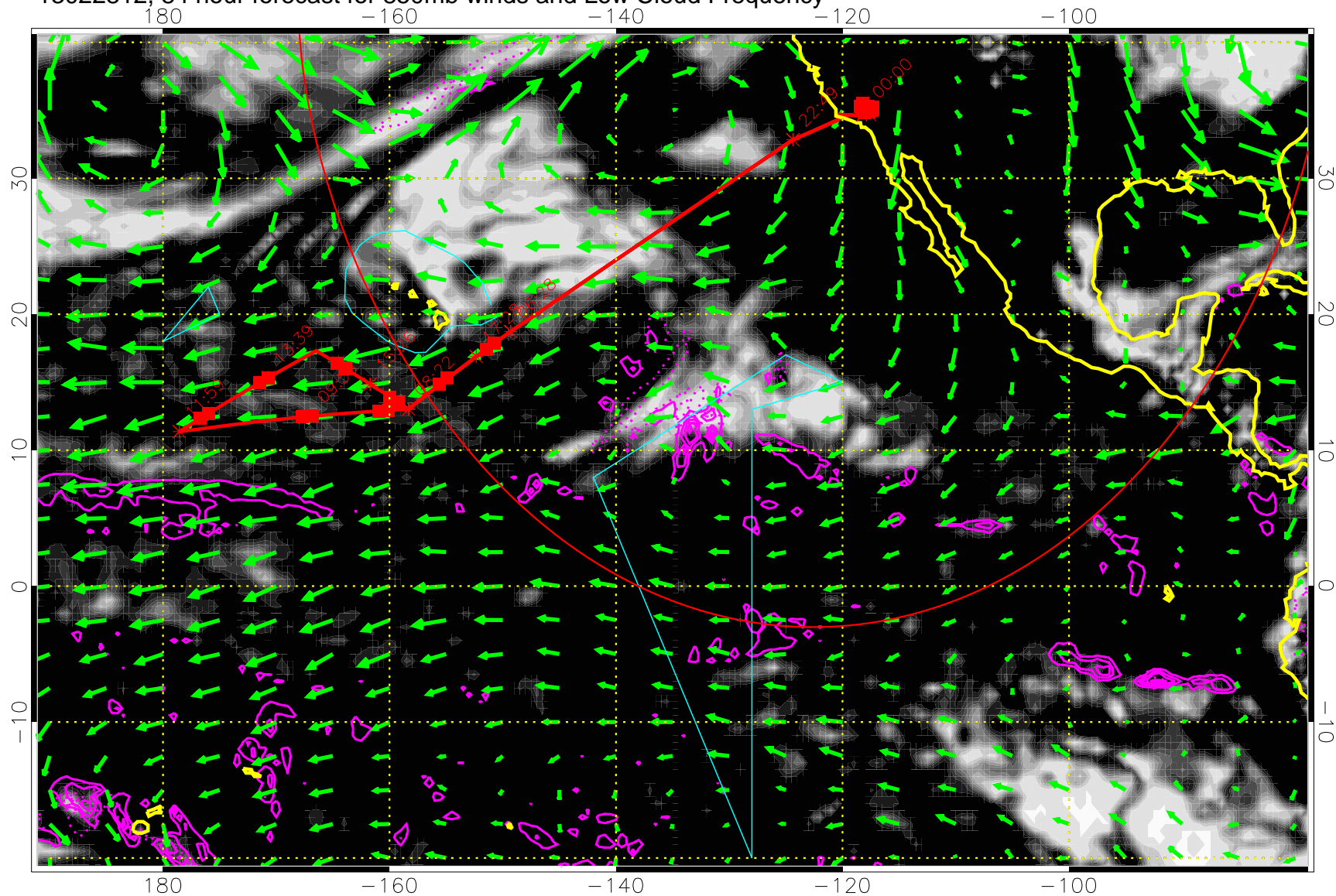
13022806, 78 hour forecast for 850mb winds and Low Cloud Frequency



Precip (tot dot, conv sol) past 6 hrs 6 kg/m2 contours, min 4

→ 30 m/s
Range ring of 4055 km -- 13 hours GH round trip

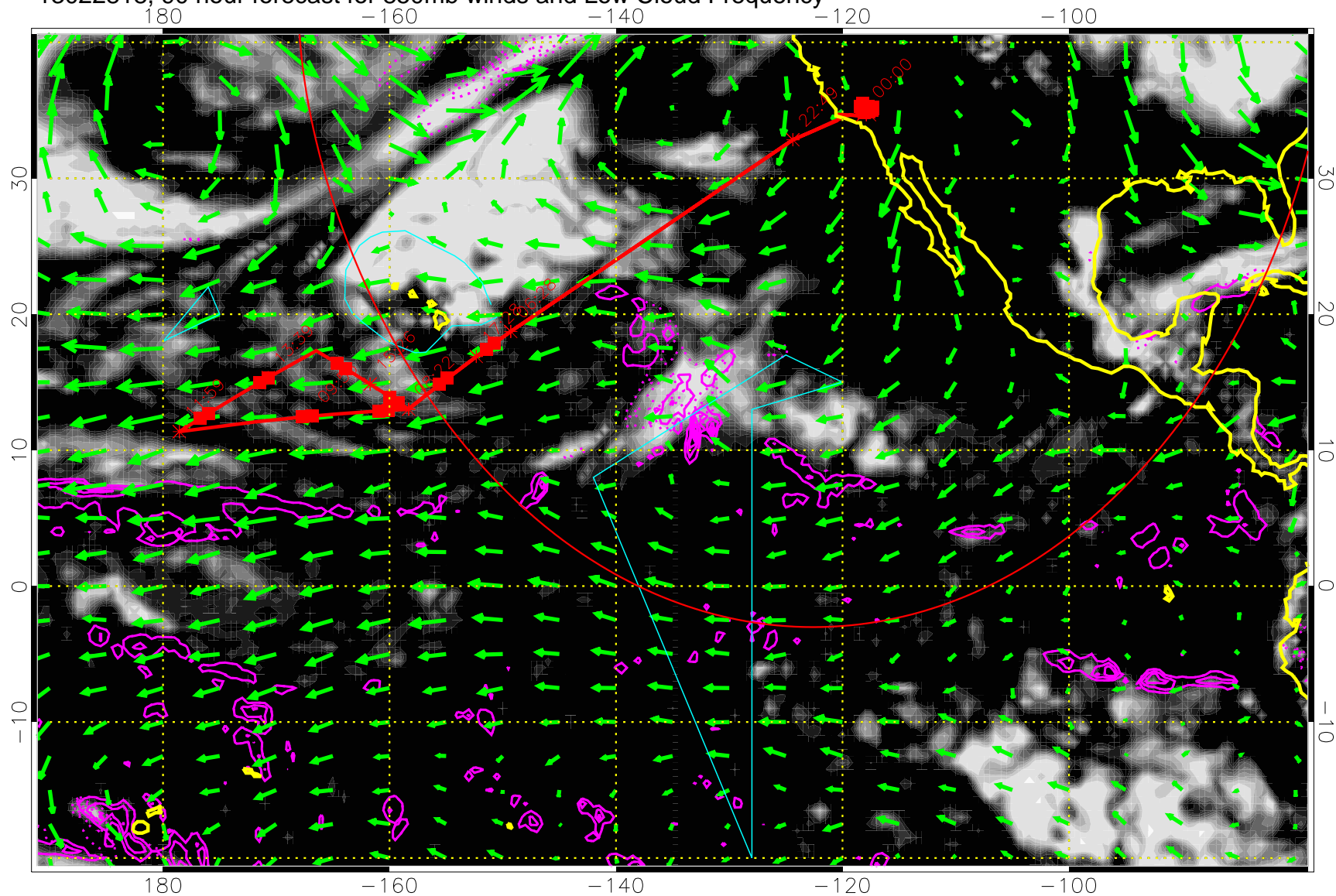
13022812, 84 hour forecast for 850mb winds and Low Cloud Frequency



Precip (tot dot, conv sol) past 6 hrs 6 kg/m2 contours, min 4

→ 30 m/s
Range ring of 4055 km -- 13 hours GH round trip

13022818, 90 hour forecast for 850mb winds and Low Cloud Frequency

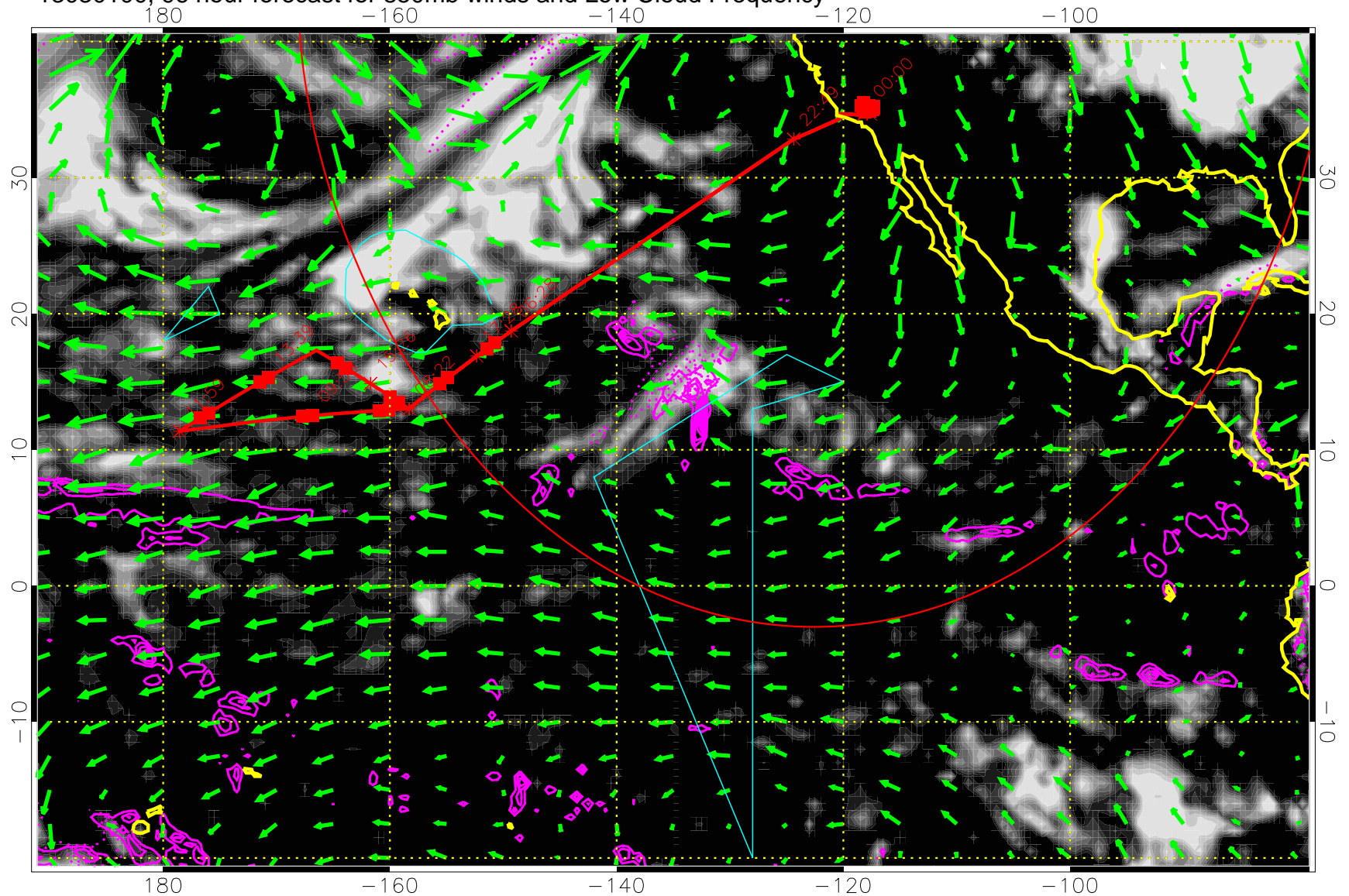


Precip (tot dot, conv sol) past 6 hrs 6 kg/m2 contours, min 4

→ 30 m/s

Range ring of 4055 km -- 13 hours GH round trip

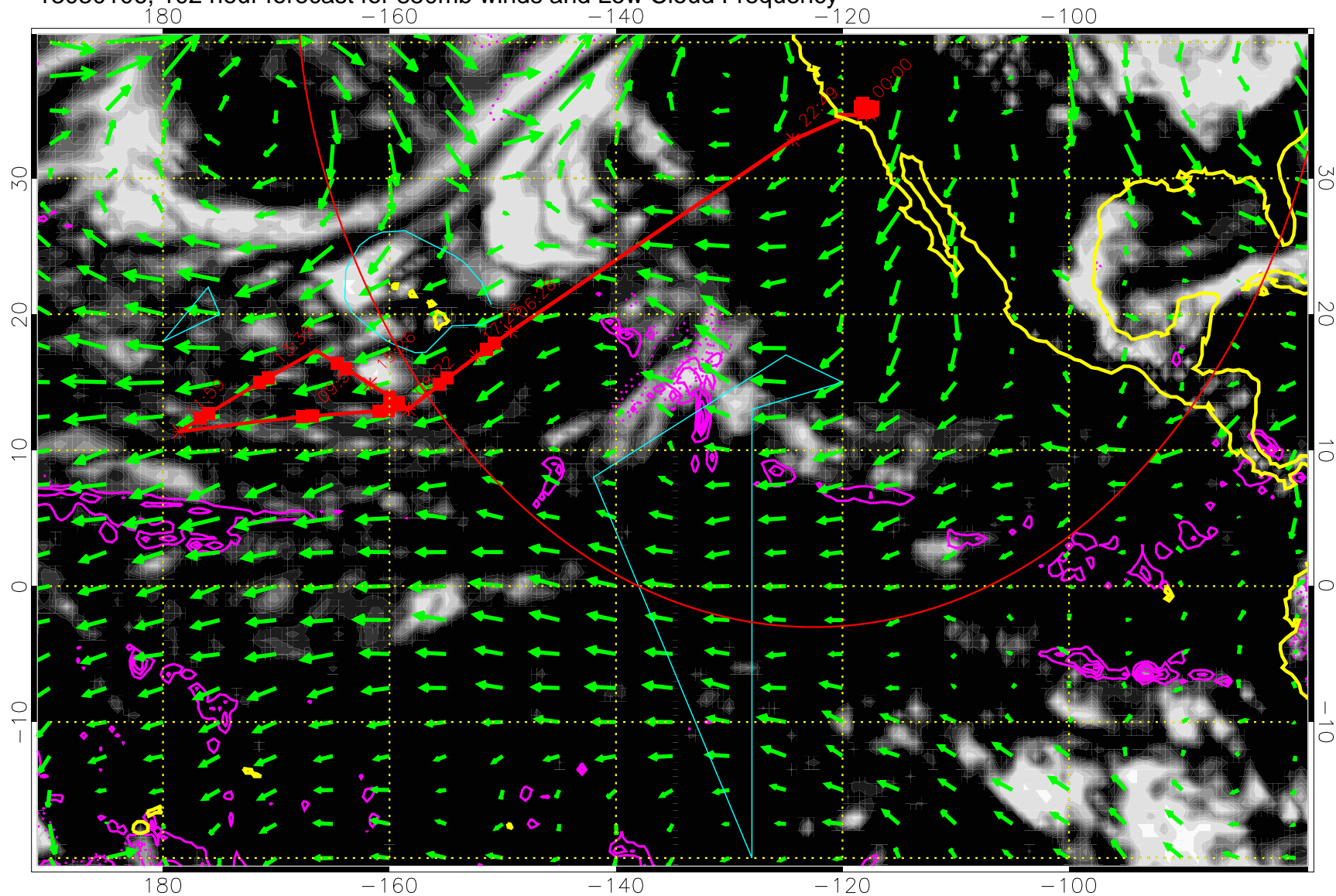
13030100, 96 hour forecast for 850mb winds and Low Cloud Frequency



Precip (tot dot, conv sol) past 6 hrs 6 kg/m2 contours, min 4

→ 30 m/s
Range ring of 4055 km -- 13 hours GH round trip

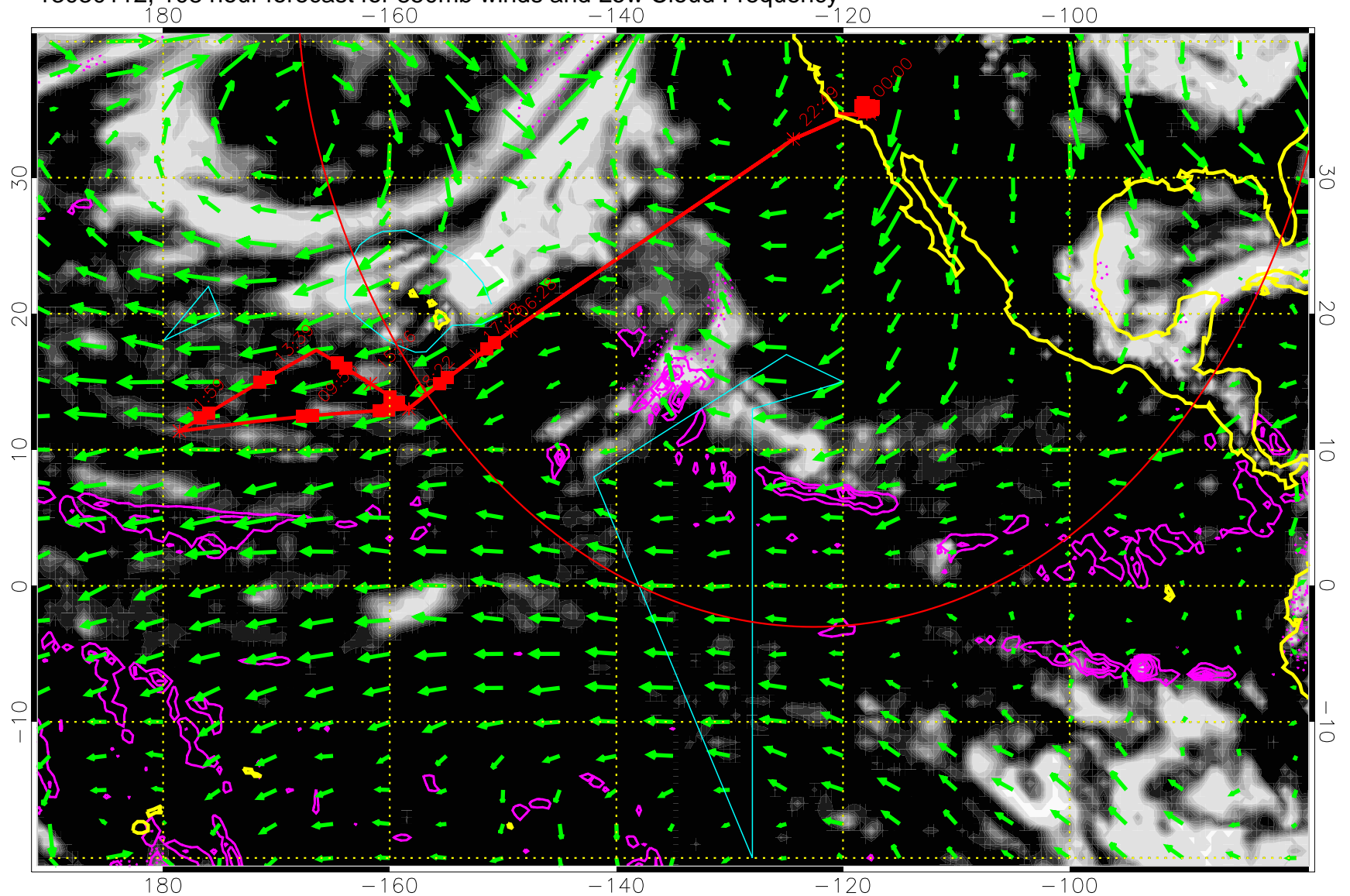
13030106, 102 hour forecast for 850mb winds and Low Cloud Frequency



Precip (tot dot, conv sol) past 6 hrs 6 kg/m2 contours, min 4

→ 30 m/s
Range ring of 4055 km -- 13 hours GH round trip

13030112, 108 hour forecast for 850mb winds and Low Cloud Frequency



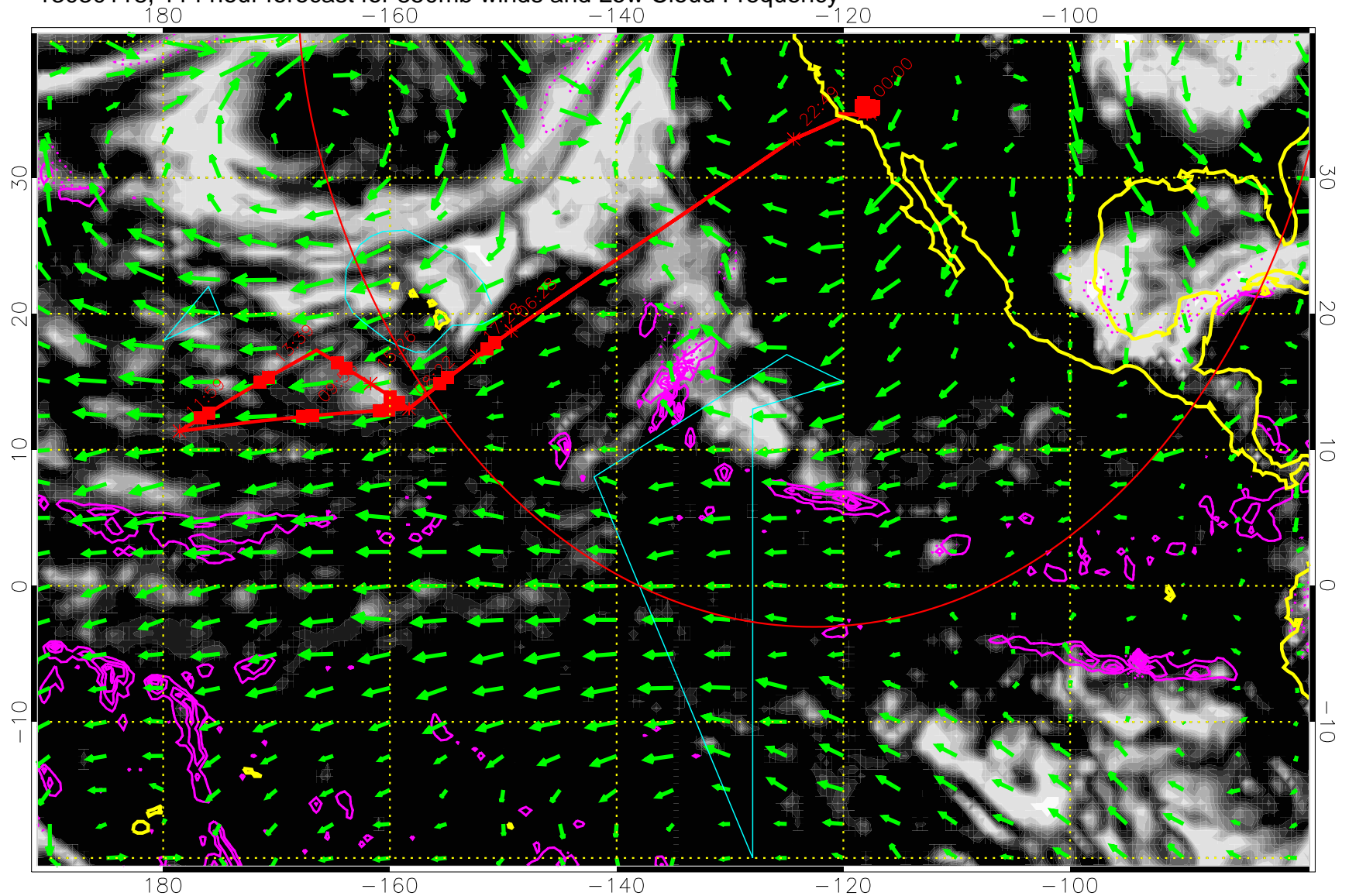
Precip (tot dot, conv sol) past 6 hrs 6 kg/m2 contours, min 4

0.0 0.2 0.4 0.6 0.8 1.0
Low Cloud Frequency

→ 30 m/s

Range ring of 4055 km -- 13 hours GH round trip

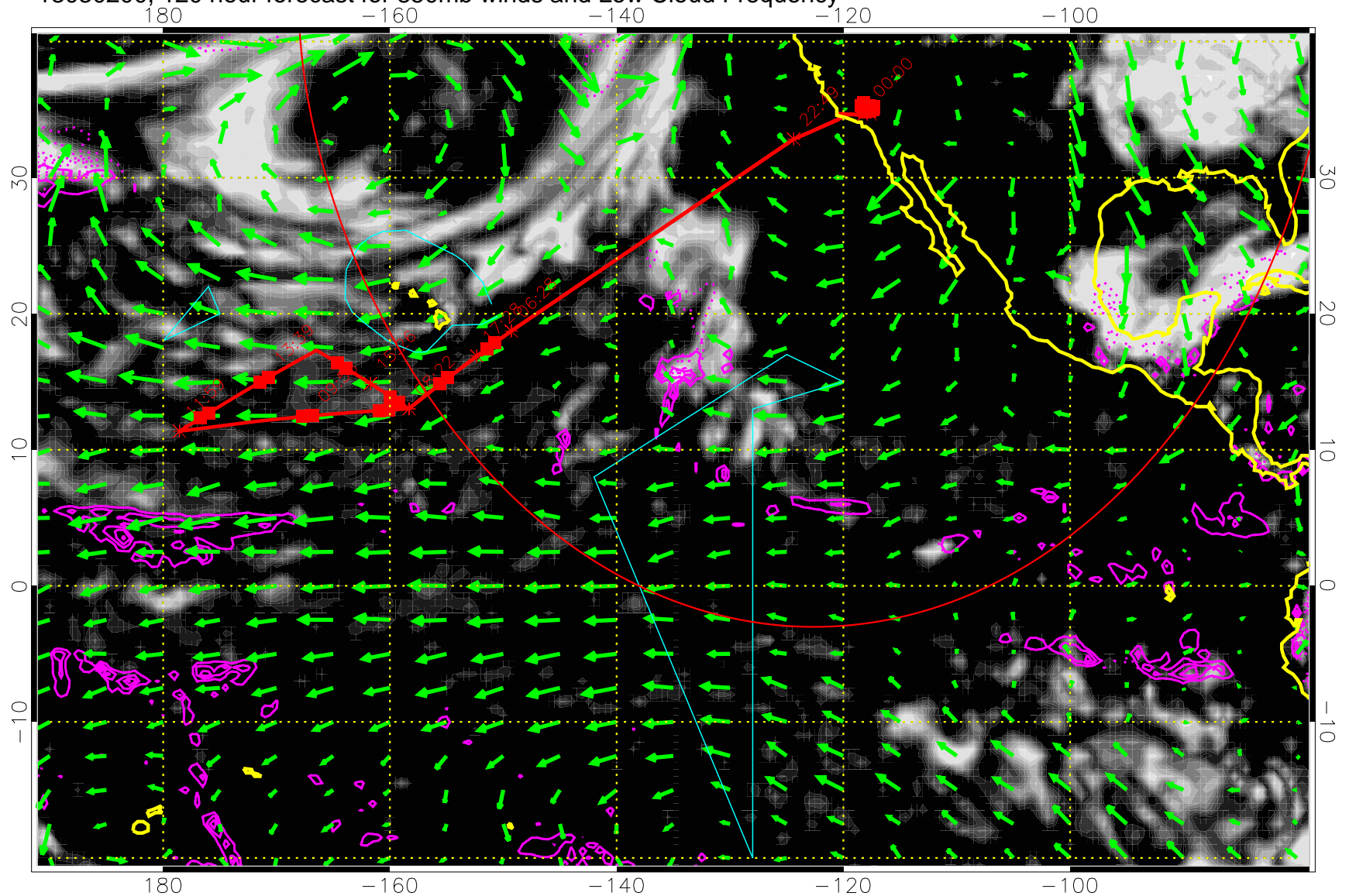
13030118, 114 hour forecast for 850mb winds and Low Cloud Frequency



Precip (tot dot, conv sol) past 6 hrs 6 kg/m2 contours, min 4

→ 30 m/s
Range ring of 4055 km -- 13 hours GH round trip

13030200, 120 hour forecast for 850mb winds and Low Cloud Frequency



Precip (tot dot, conv sol) past 6 hrs 6 kg/m2 contours, min 4

→ 30 m/s
Range ring of 4055 km -- 13 hours GH round trip